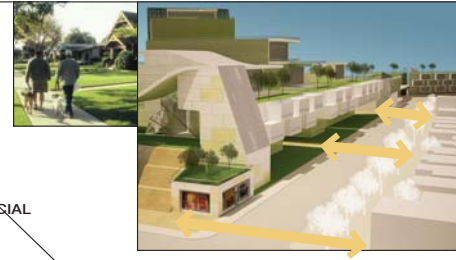


equity

Rights to Nature & Human Scale/Human Place

CROSS-POLLINATION EDUCATION -
CHILDREN'S DAY SCHOOL &
SENIOR CENTER

CONNECTING NEW & OLD NEIGHBORHOODS



ROOFTOP
SPORTS FIELD



RIGHTS TO NATURE

FRESH AIR

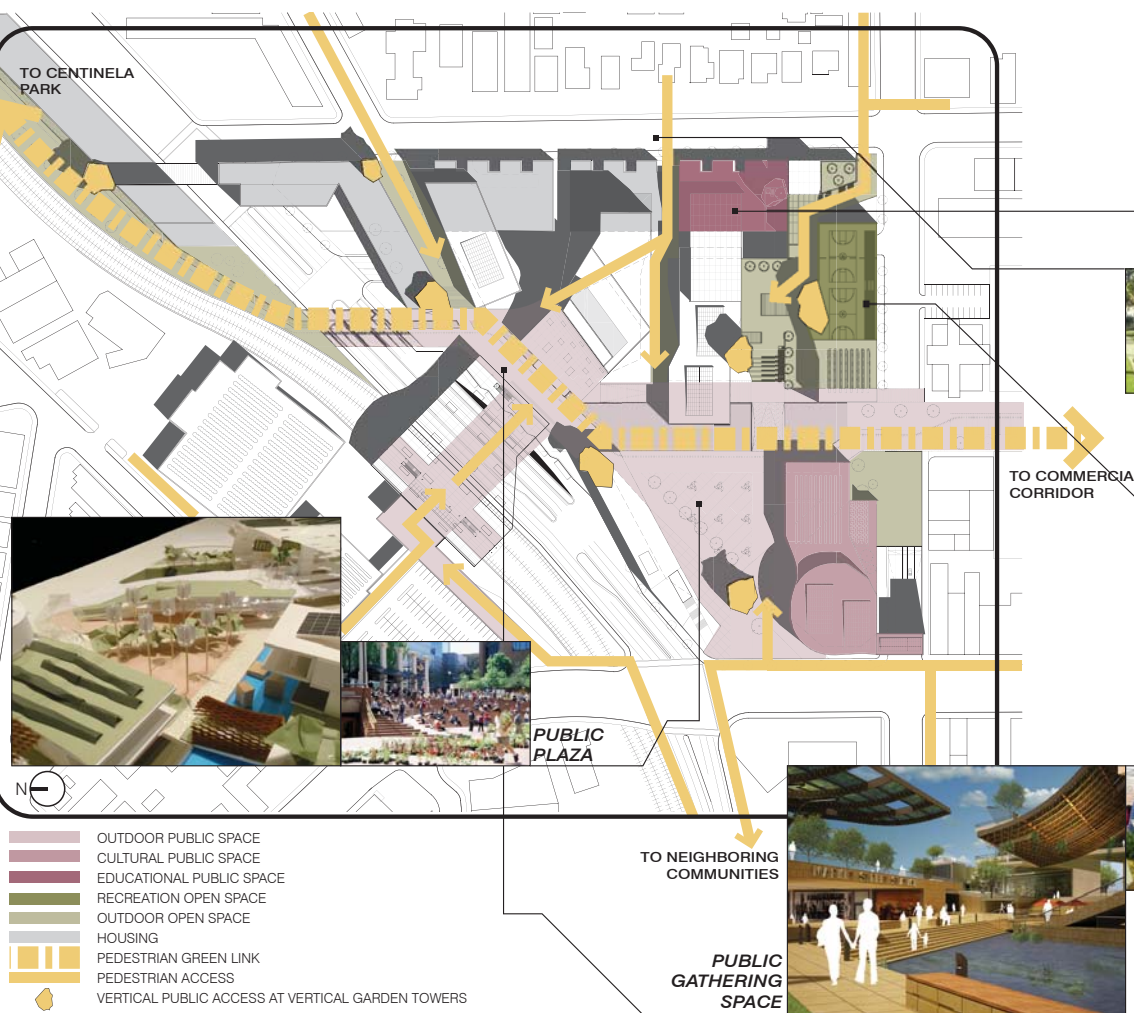
THE INGLEWOOD: A SPATIAL ECOLOGY DEVELOPMENT PROVIDES A VARIETY OF OUTDOOR SPACES FOR THE ENJOYMENT OF THE FRESH AIR BROUGHT IN BY THE OCEAN BREEZES. BUILDINGS ARE TO HAVE OPERABLE WINDOWS FOR NATURAL VENTILATION.

SUNLIGHT

THE PROJECT IS DEVELOPED SUCH THAT SHADING IS PROVIDED AT THE PUBLIC GATHERING SPACES TO ALLEVIATE THE HOT AFTERNOON CALIFORNIA SUN BUT NOT TO CAST SHADOWS ON THE ADJACENT EXISTING LOW RISE DEVELOPMENTS.

NATURAL WATERWAYS:

THE HISTORIC NATURAL SPRING WILL BE HIGHLIGHTED IN THE DEVELOPMENT AS A NATURAL FEATURE AND CONTINUE TO BE USED AS THE CITY'S WATER SOURCE.



HUMAN PLACE CROSS-POLLINATION

PRIVATE (HOUSING/COMMERCIAL)

GREEN/OPEN SPACES
PUBLIC SPACES

INFRASTRUCTURE/ENERGY

INGLEWOOD: A Spatial Ecology

www.ferstudio.com
© (fer) studio, LLP

ARCHITECT: (fer) studio