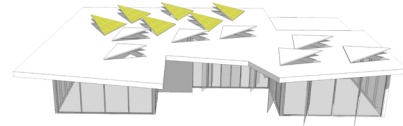


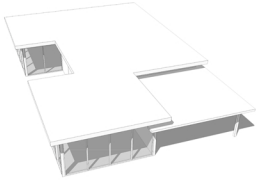
Typical Solar Panels

Large flat solar panels are functional, but give a negative afterthought aesthetic to homes.



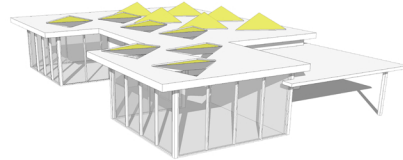
Smart Integrated Solar Panels

Incorporated solar panels with the louvered panel system are both aesthetically pleasing and give the home versatility for passive solar heating and cooling.



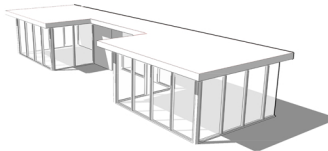
Typical Flat Roof

Large sealed flat roofs don't allow for passive ventilation.



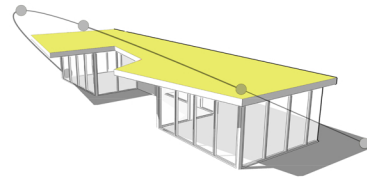
Smart Wind Scoop / Exhaust

Operable vents passively cool the home. The vents act as wind scoops in the NW and an exhaust on the SE.



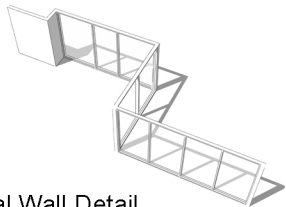
Typical Overhang

Most Mid-Century Modern overhangs are straight and do not follow the path of the sun.



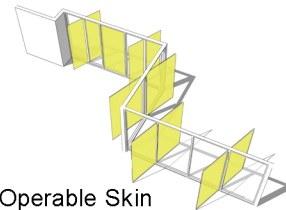
Smart Shading Overhang

The shape of this overhang system maximizes the use of solar radiation for passive heating and cooling.



Typical Wall Detail

Fixed glass from floor to ceiling traps in heat and does not breathe.



Smart Operable Skin

Operable windows extend living spaces and allow for passive ventilation while still maintaining views.

Mid-Century Modern Analysis / Modifications

Case Study Mid-Century Modern

