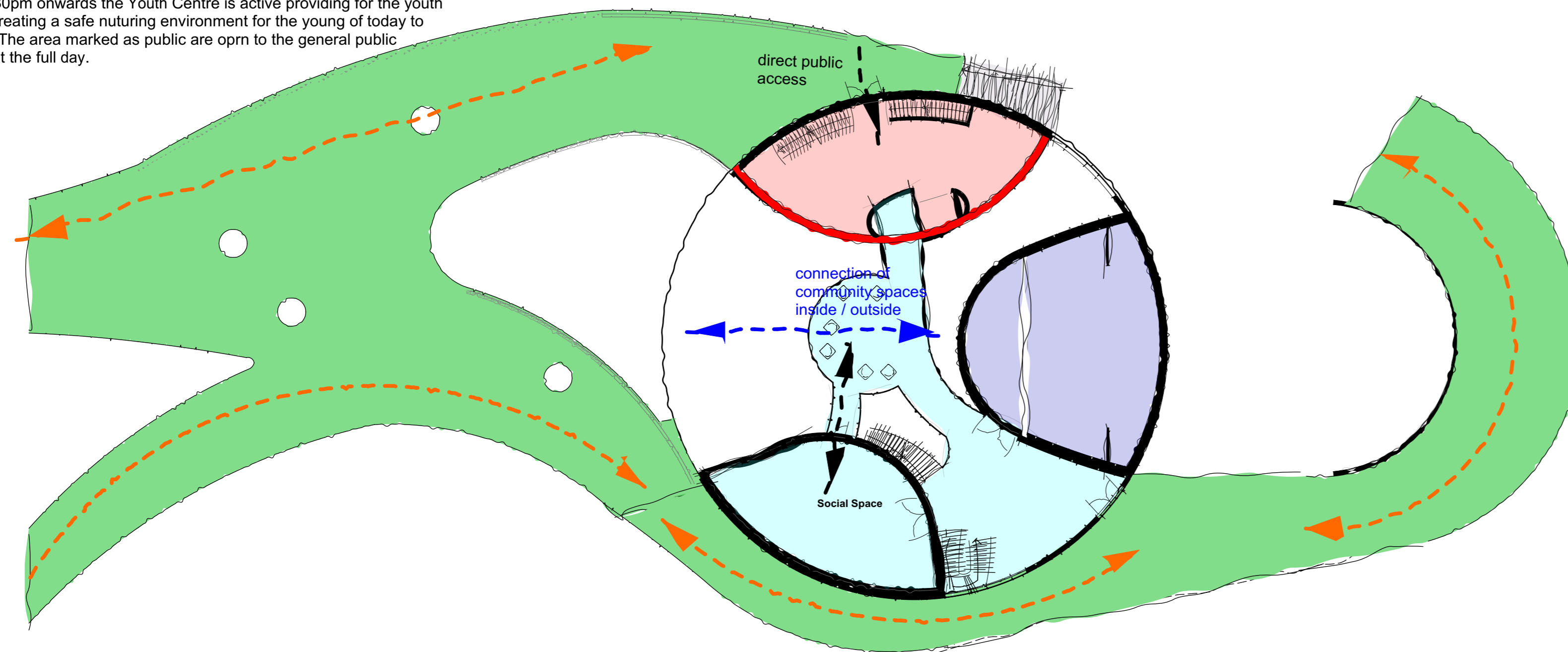
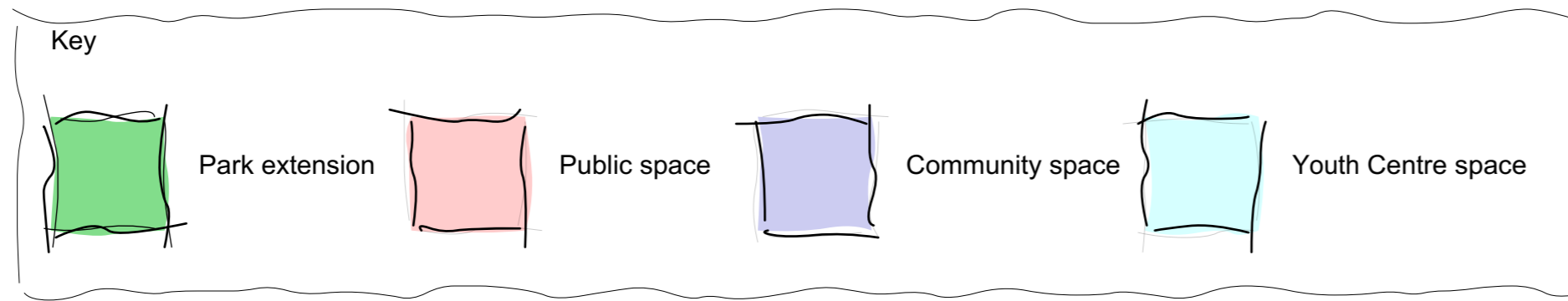


The Jersey Youth Holders opening times run from 9am to 10pm allowing for the building to benefit from its maximum use throughout the day.

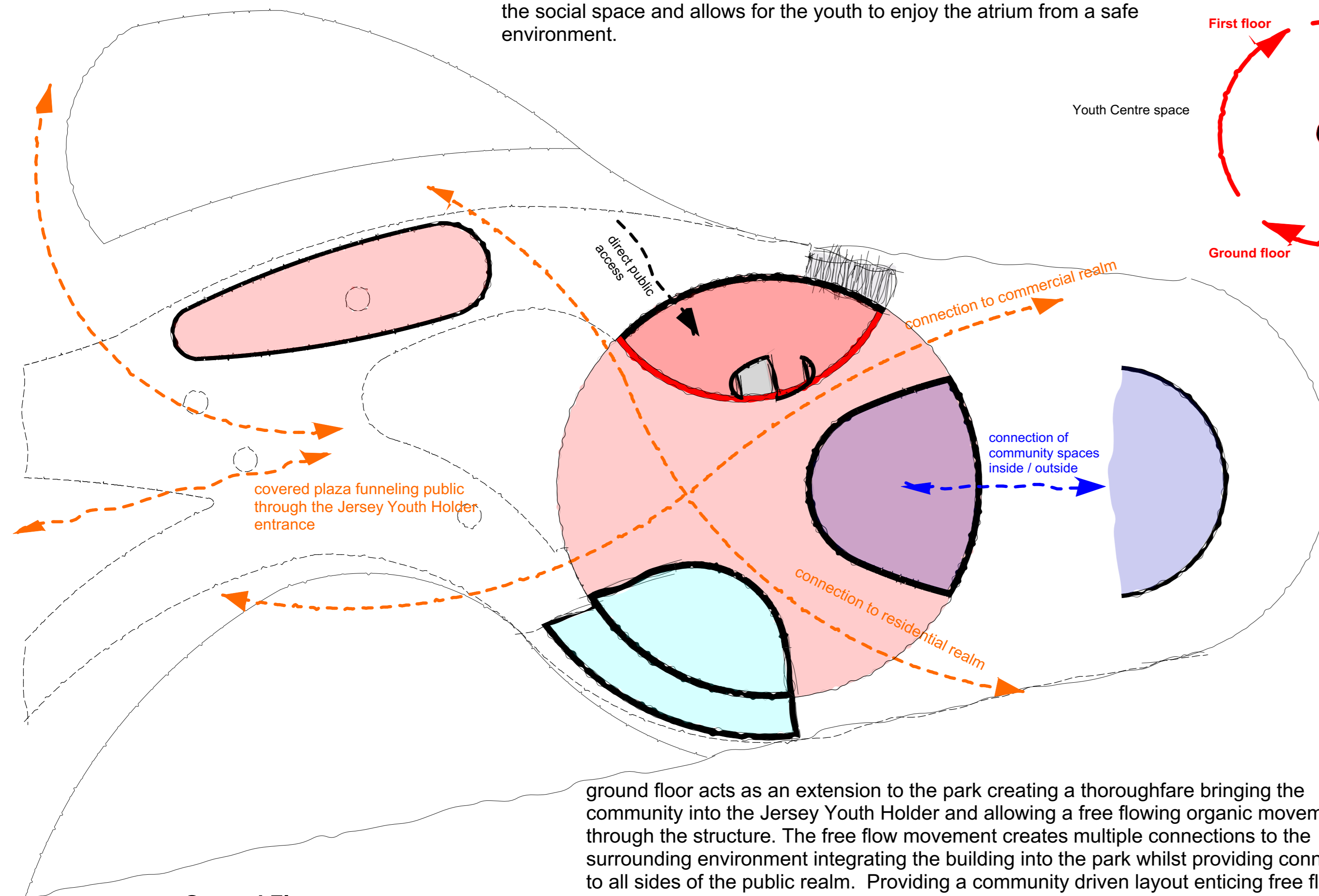
9am through to 3pm the building is open in its entirety to the general public providing further education, leisure facilities and health and recreation. These manifest themselves in such activities as yoga classes, art classes, language classes, back to work and further skill building exercises that better serve the local community. The function rooms and galleries are open 9am to 10pm for hire to generate revenue.

From 15.30pm onwards the Youth Centre is active providing for the youth of today creating a safe nurturing environment for the young of today to develop. The area marked as public are open to the general public throughout the full day.



First Floor

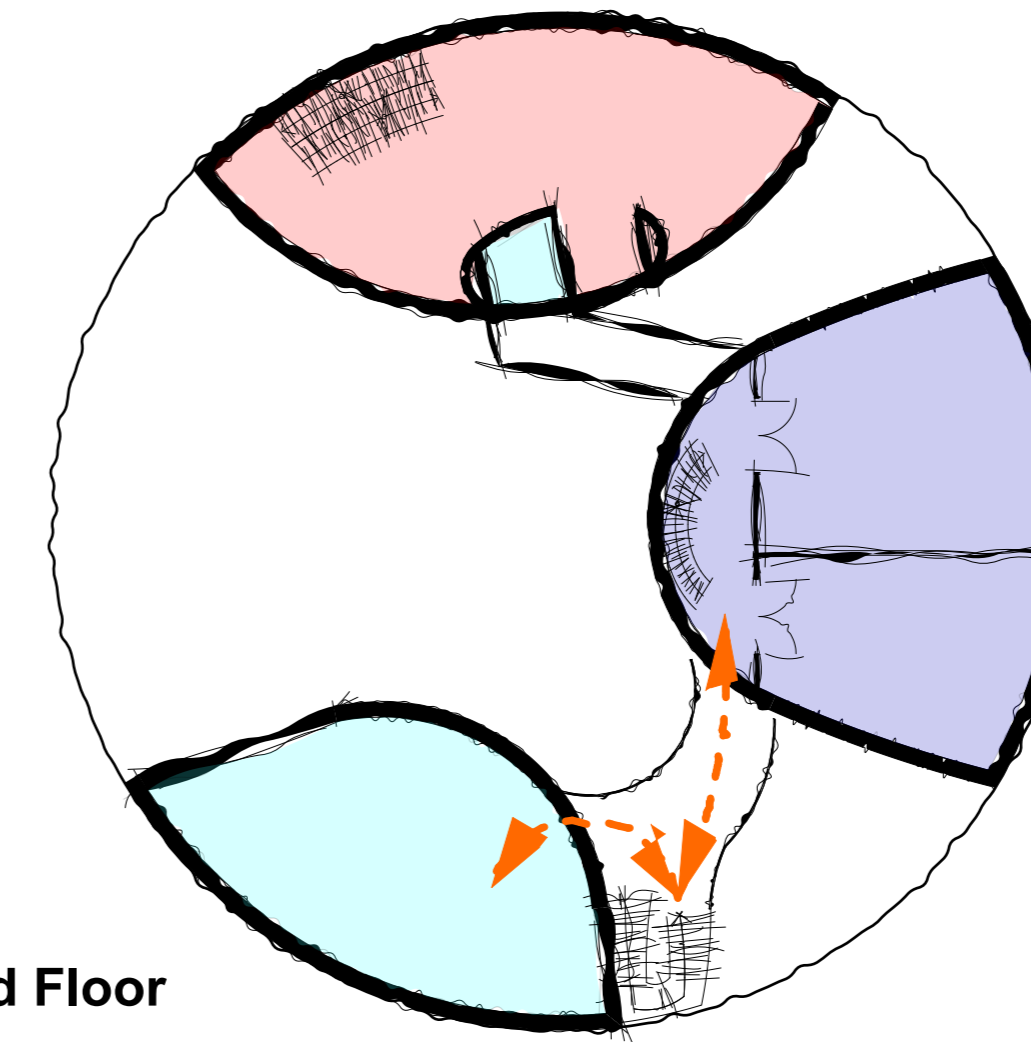
First floor garden roof deck extending from the park up and around the gas holder engulfing the gas holder and reconnecting it to the public realm. The tail to east connecting the garden deck back down to the surrounding context. The first floor youth space acts as a social hub used for social interaction and controlled community interaction creating a physical barrier from the entrance lobby whilst still being visually connected. It connects to the social space and allows for the youth to enjoy the atrium from a safe environment.



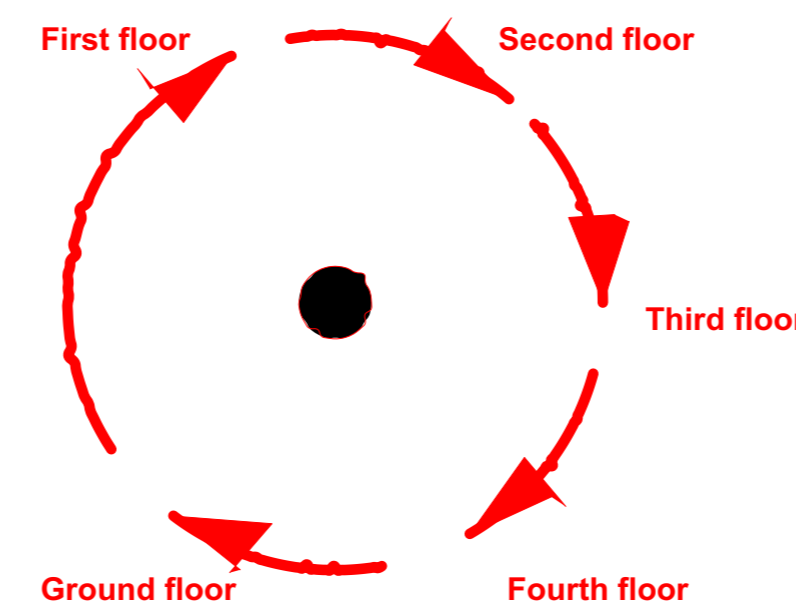
Ground Floor

ground floor acts as an extension to the park creating a thoroughfare bringing the community into the Jersey Youth Holder and allowing a free flowing organic movement through the structure. The free flow movement creates multiple connections to the surrounding environment integrating the building into the park whilst providing connections to all sides of the public realm. Providing a community driven layout enticing free flowing movement and through. The inward facing walls marked in red are to be used as a climbing wall by the general public.

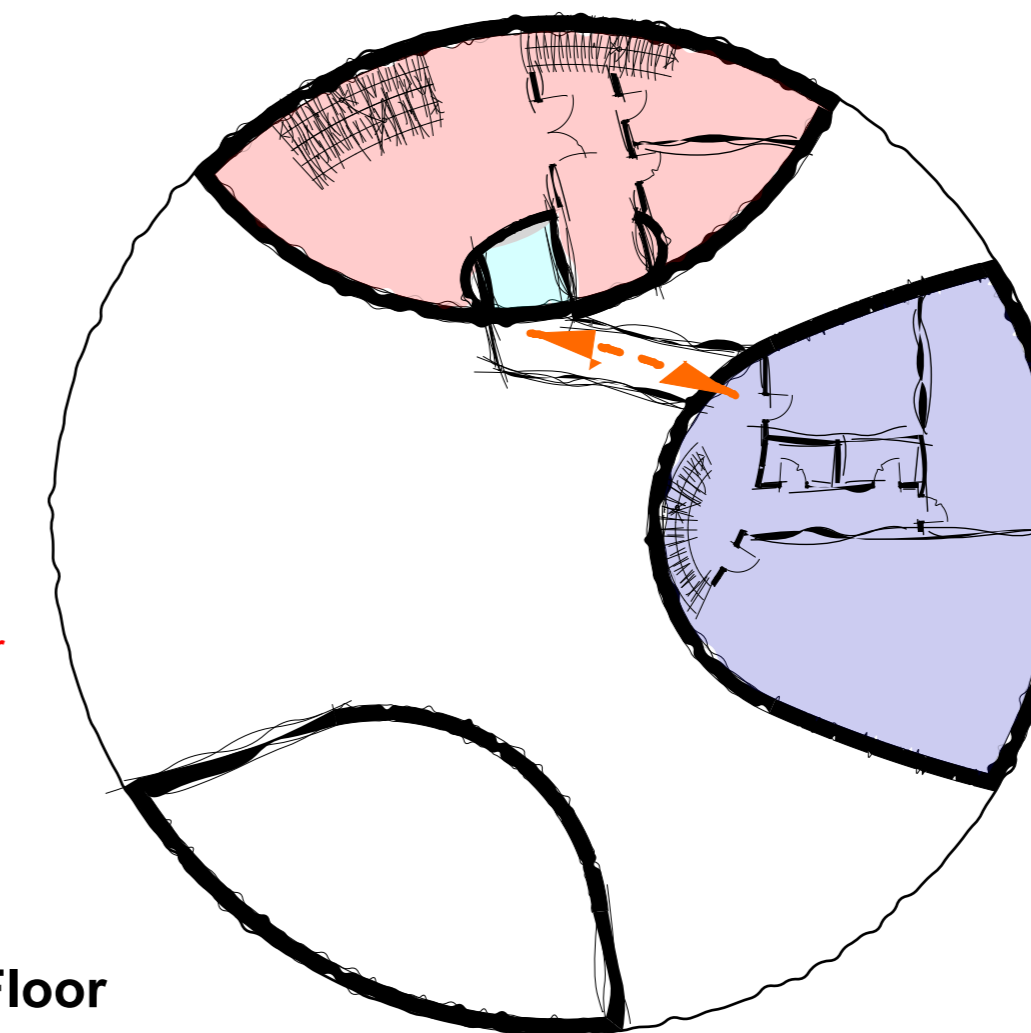
Second Floor



Second floor provides educational spaces linked to the youth centre and the community. The classrooms can be utilised throughout the day by the local community providing further educational classes for language, debate, work skills, arts and so on to further benefit the local community. The local community gains access between 9 am and 3pm during school hours with the youths having access from 3.30 pm to the 10 pm. This ensures the educational facilities benefit from all day use. Public space is made up a range of galleries and ancillary rooms providing insight to the general public on the youth centres works and aspirations and providing vertical circulation to top floor.

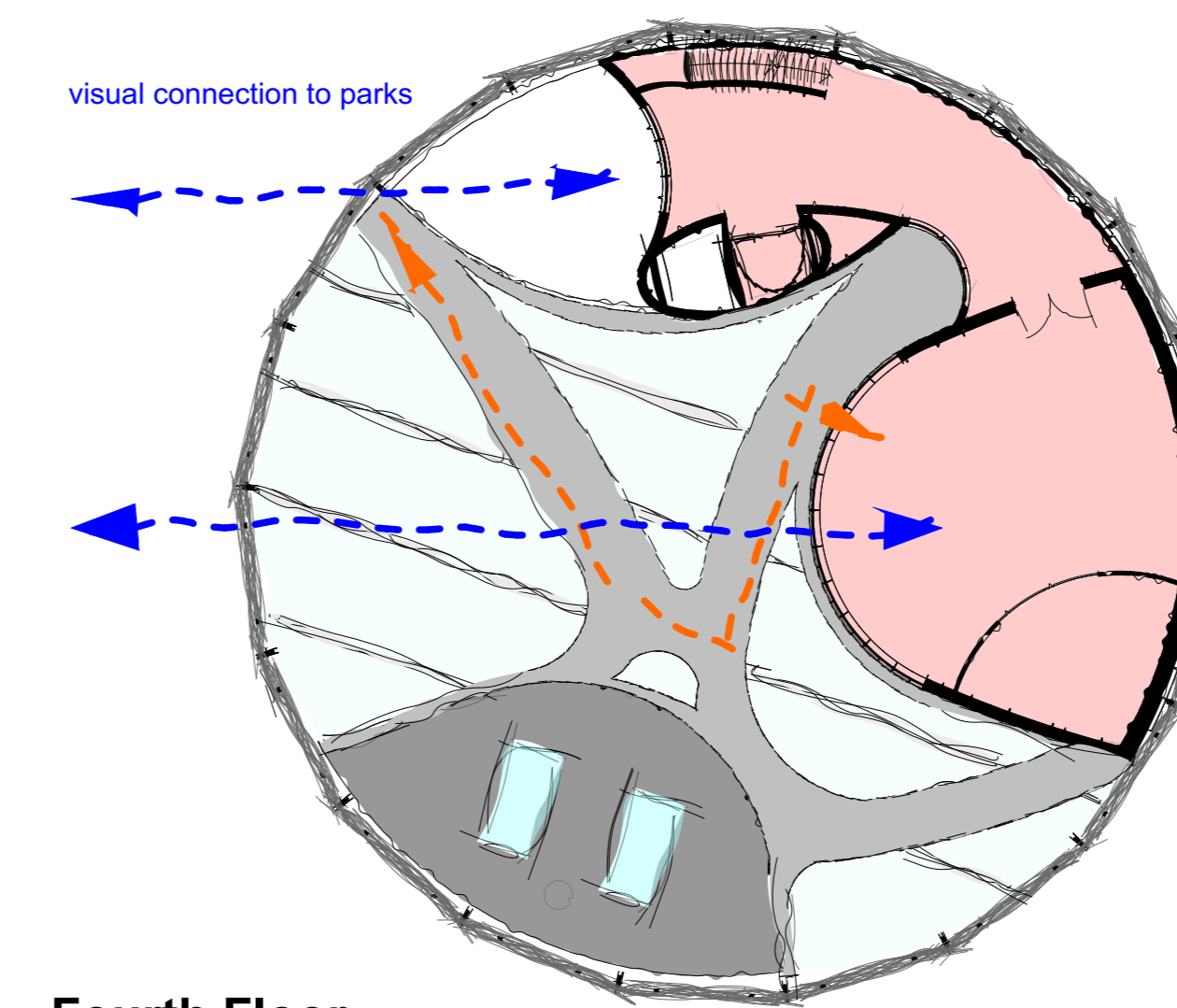


Third Floor



Third floor provides the arts facilities open to the local community up until 15.00pm. This provides the community times prior to 15.00pm for yoga / pilates classes, dance classes and private music lessons and so on to provide further activities. The public space allows connection to the atrium lobby through a semi transparent climbing wall creating a connection between public and youth with boundaries.

Fourth Floor



Fourth floor provides a public area consisting of function rooms and a roof terrace and a walkway travelling over the atrium providing views outwards to the surrounding community and views down into the atrium. This public floor provides facilities for functions and boardroom hire and so on providing further facilities that can be utilised all from 9am to 10 pm. It can only be accessed by the public realm separating it from the youth centre.