

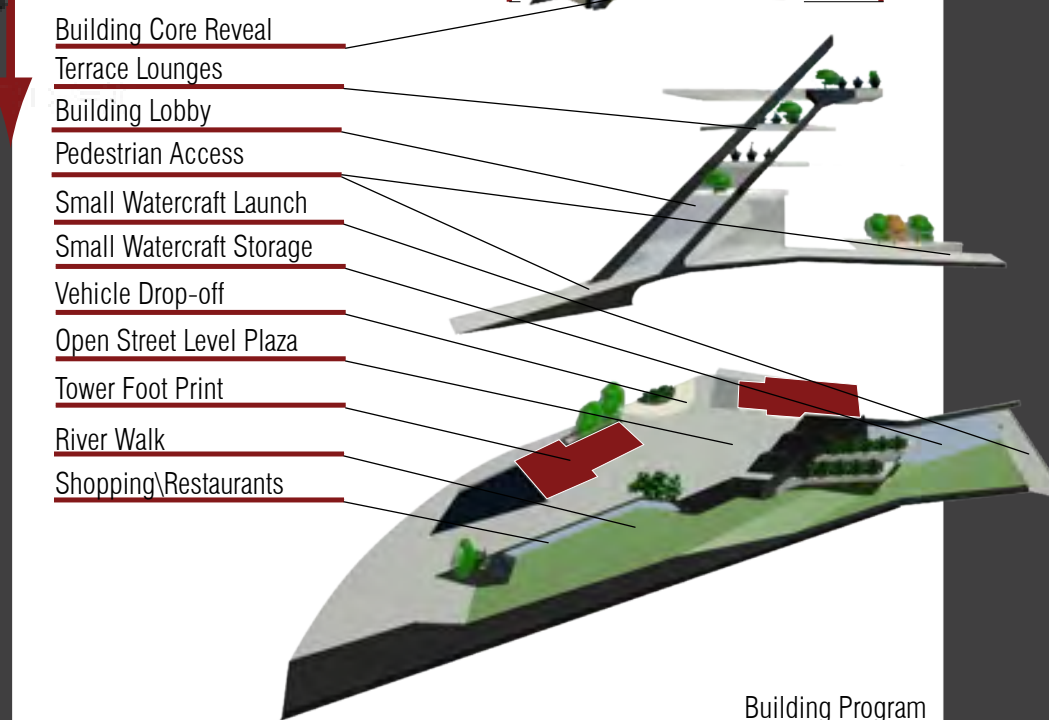
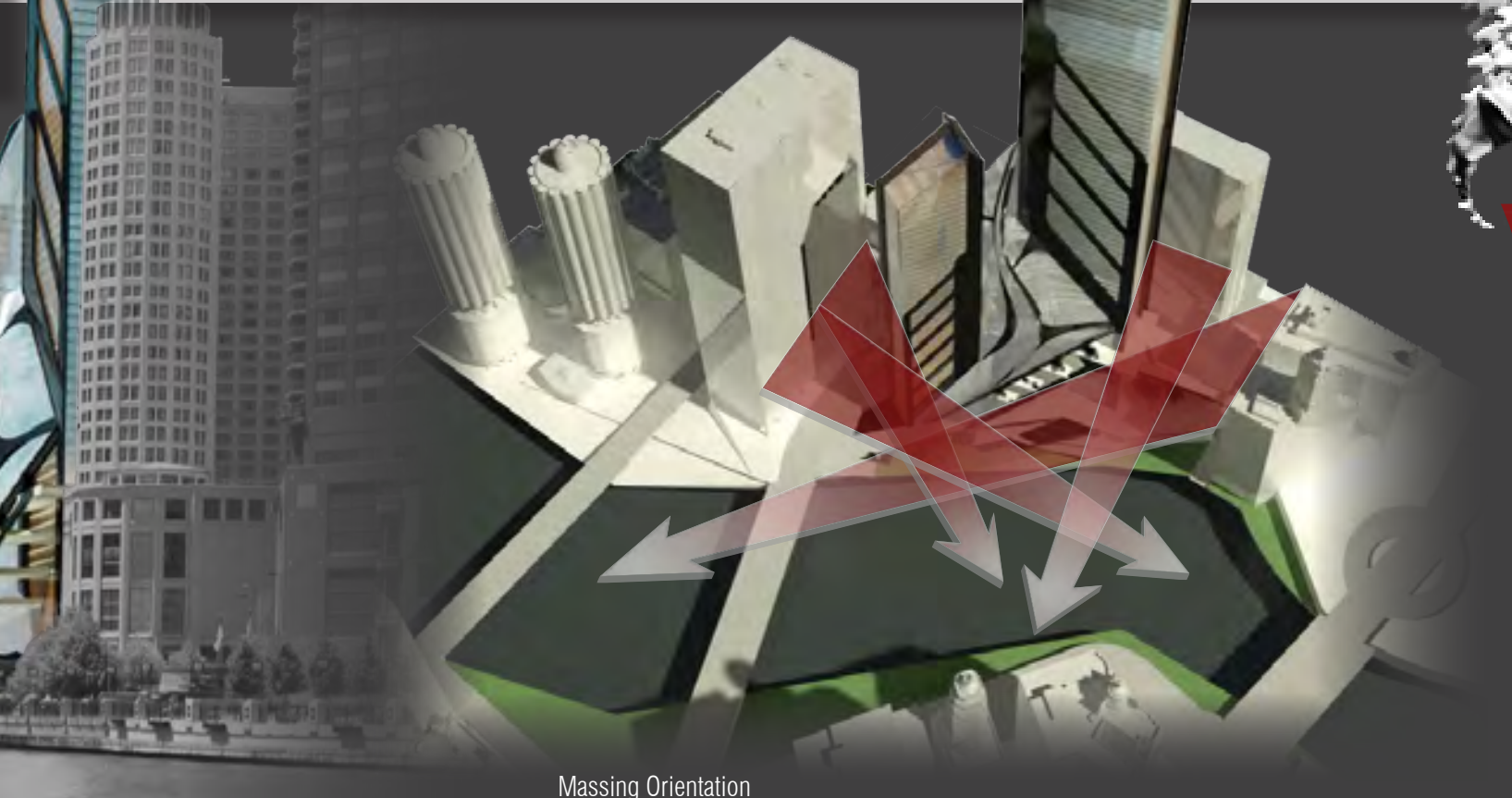
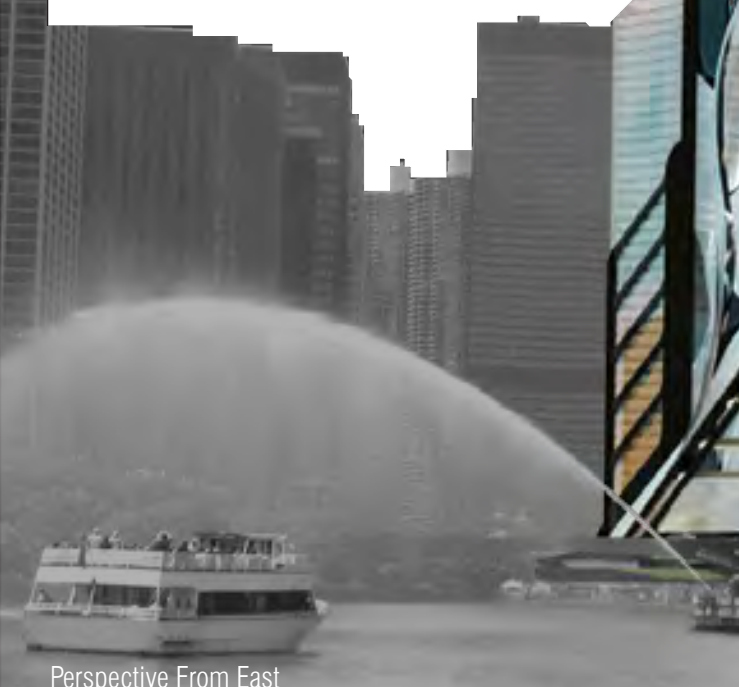
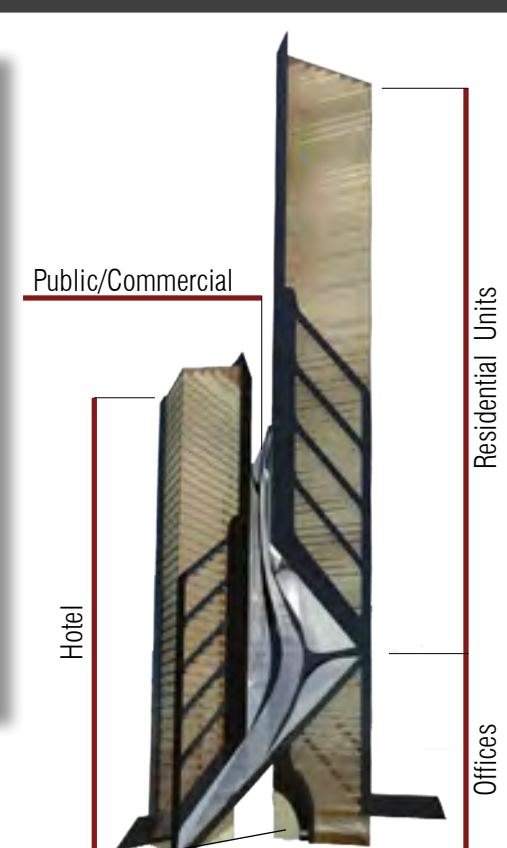
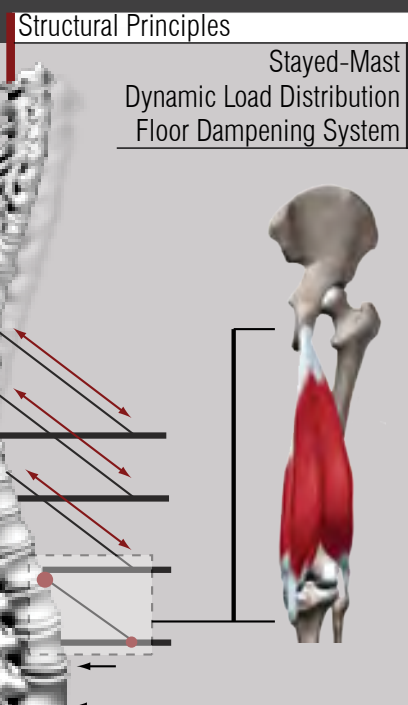
401 N. Wabash

Typology Study

5th Year : 5 Weeks

Problem:
Investigate the building typology of skyscrapers with intent to formally analyze the interjection of an iconic building into an urban context.

Solution:
Design a mixed-use tower that focuses on how the building connects with the people and urban fabric of Chicago. By meshing these social elements together in a manner that coincides with the building's structure and public spaces, one can increase the engagement of the inhabitant through the entirety of the building. Stretching the tower to visually and physically connect with the lower layers of the city creates a honest engagement between the building and its inhabitants. Creating this relationship, users interact with building in a less intimidating manner and are drawn up through the building's vertical axis to take advantage of the height and beautiful views that skyscrapers inherently possess.



Perspective From East

Massing Orientation

Building Program

Perspective From South