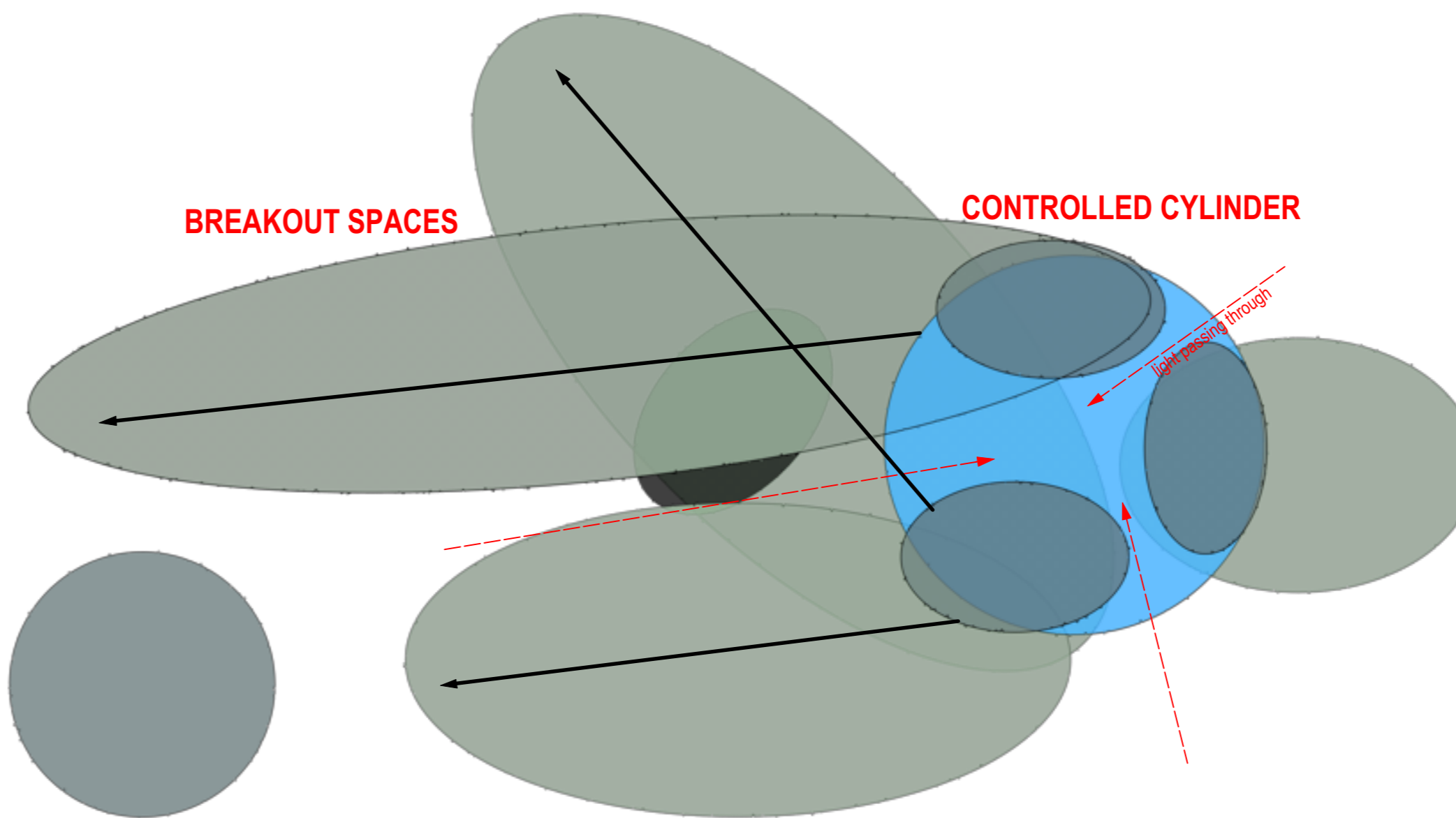


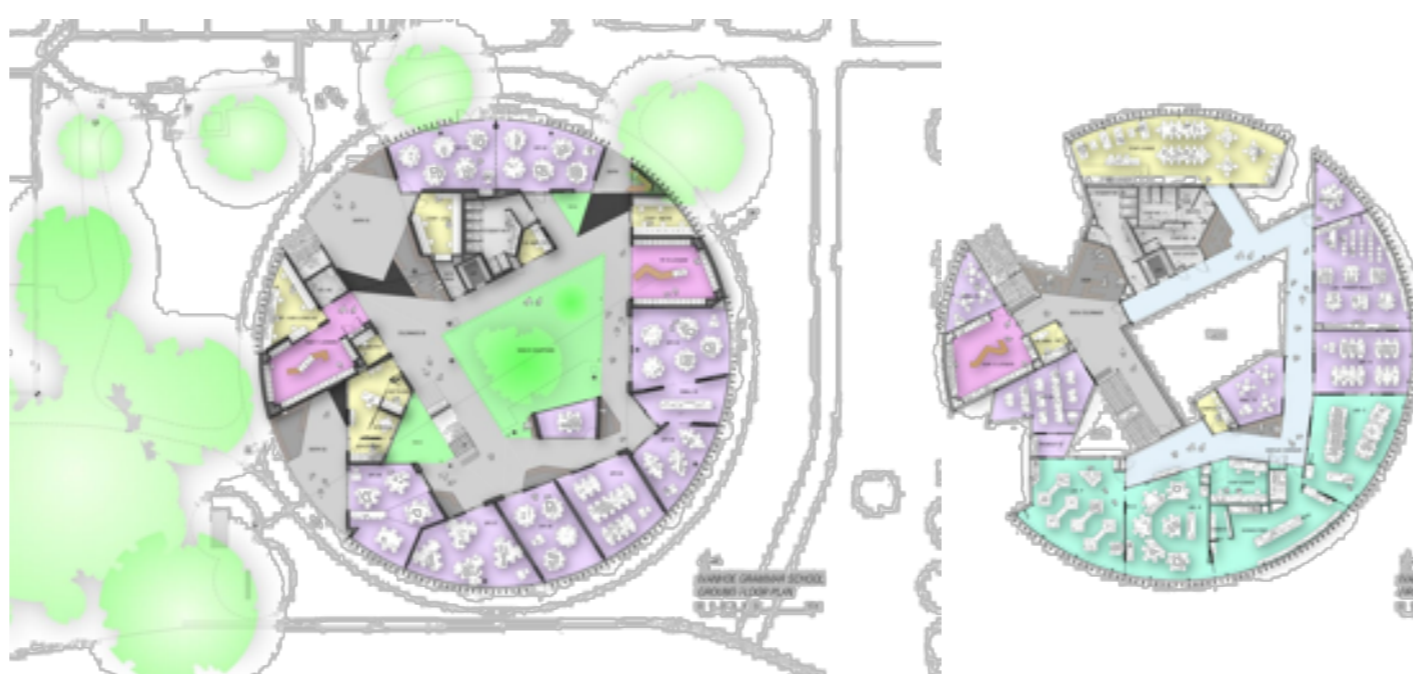
Existing massing sketch looks at the massing of the surrounding context and signifies the Gas Holders strong presence within this area of town.

Existing gas holder is defined as a circle that is always the same distance from the centre. The Gas holder located down the far western end of the site divorced from the public realm. Creating this connection to the public realm is signified with oval shapes pulling and pushing the circular shape to reach out. These can manifest themselves in gardens an external spaces enticing people to connect to the Jersey Youth Holder.

The grey oval pods represent the placement for the structures within the Gas Holder frame and breakout facilities outside of this structure.

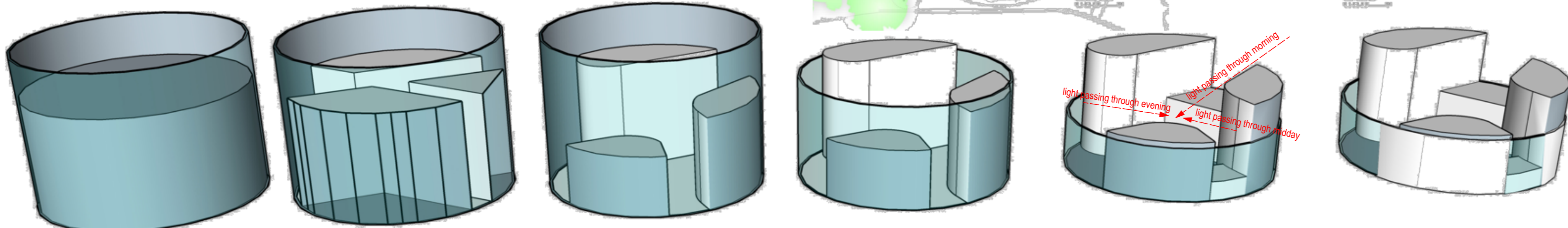


Precedent Images

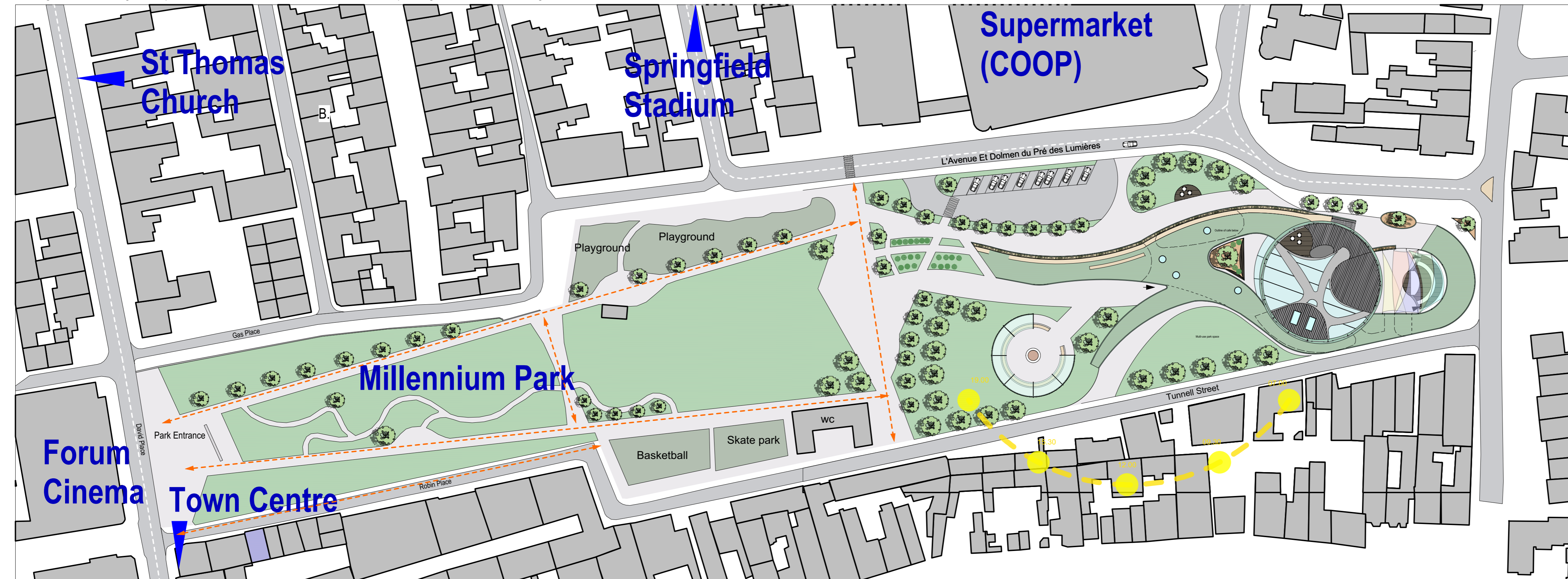


Ivanhoe Grammar School, Melbourne Australia
Whilst not a gas holder it has taken the form of a cylindrical building placing the facilities around the outer rim of the core creating a central atrium open to the elements. The classrooms and facilities are accessed via walkways following a linear layout within a circular structure.

Massing Models



Massing model indicating development of forms and how the internal forms develop taking into account natural light and views



Proposed Site Plan scale 1:750

Brief

The proposal for the "Jersey Youth Holder" building aims to provide a solution for an abandoned 1950's telescopic gas holder structure located in St. Helier Jersey, deemed no longer needed, with a solution that not only transcends the brief to deliver a youth service building but focuses on a blueprint for the future.

Locally youth services are seen as a type of creche, a place for supervision whilst parents work the proposal for the "Jersey Youth Holder" provides a social change aimed for youth empowerment and skills building. The introduction of a crosspollination of skills bases benefits the youth by sharing knowledge in an active and constructive environment.

The proposal takes components of the brief and understands the set parameters in which the Youth Service work and operates daily and aims to provide a public / private social building arrangement which works on multiple levels and looks to enable opportunities to create a self-sustaining building that connects to the public realm, through providing life skills and public facilities with a low cost commercial aspect to create a self-sufficient green building.

The proposal aims to provide a theoretical aspect of youth protection allowing for the building to provide a disconnection of youth and the general public but also connects through performance and leisure facilities and public space. The proposal connects with the adjacent public park acting as the book end to this public space by utilising rising gardens and opening up of the ground floor creating an inside / outside relationship.

Concept

The project starts from a critical review of the existing 1950's telescopic Gas Holder structure. Deciding to maintain the external structure steel lining and characteristic frame whilst trying to emphasize the volume and mass of the large steel drum. The existing structure is designed to lock gas inside and keep all else out. The telescopic gas holder is made up of three chambers rising up through the dodecagon external framework as gas is pumped in for storage. This gas is created during the day and distributed during the night time when gas supply was most needed to serve the local community.

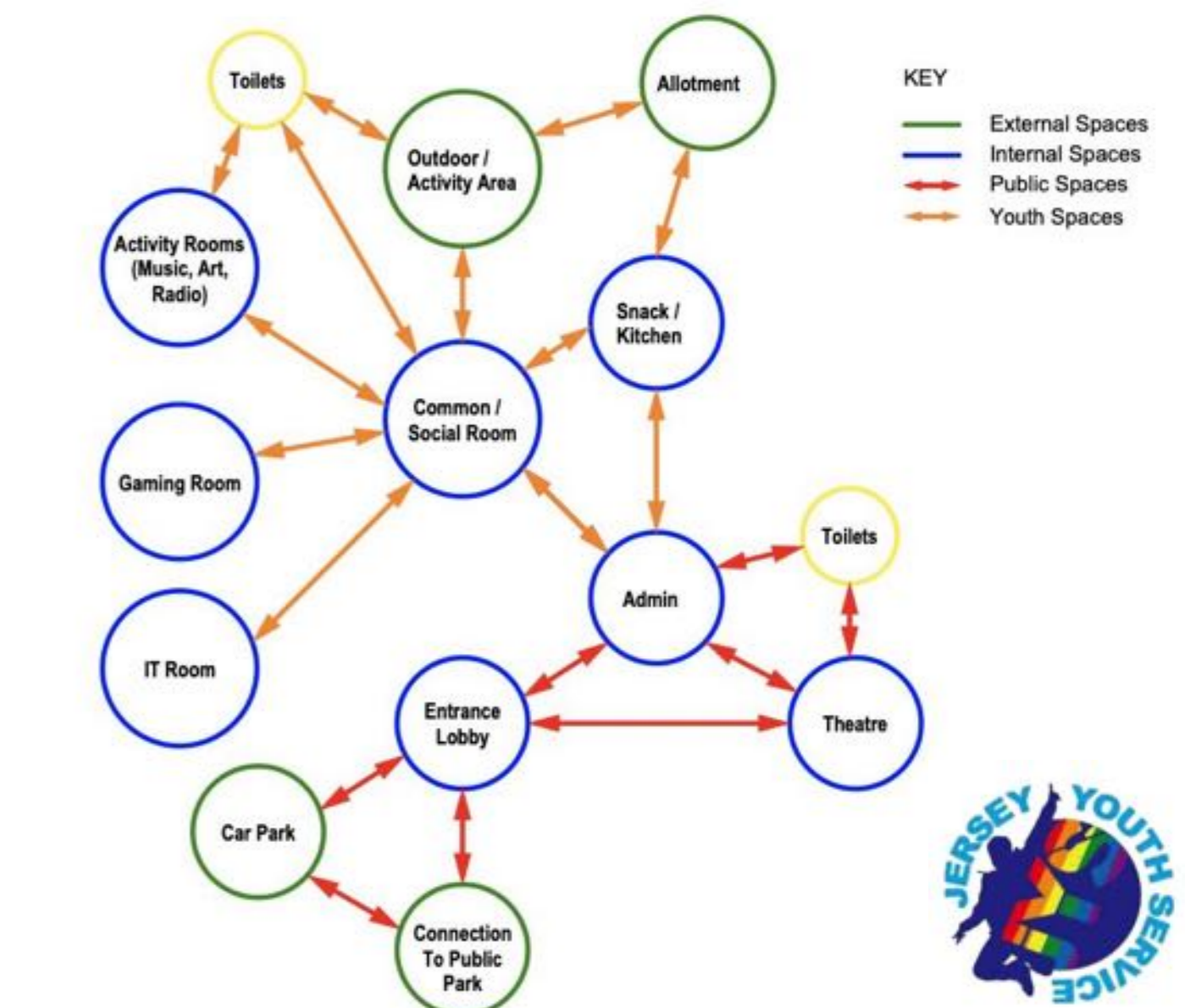
Bringing to fruition the metamorphosis of a cold rusted cylindrical structure to benefit the local inhabitants of the surrounding community. The existing containers form is designed to contain an unsustainable natural gas fuel. This is no longer suitable due to evolving fuel storage techniques and the decline in natural gas. The underlying theme provides an opportunity to generate a new, clean sustainable fuel source such as solar energy to energise the local community. The storage void within is to be reutilize as a container for the community.

This redundant static gas holder has no relevance of time, it's existing form void of life lies dormant and decaying. This design proposal seeks to transcend time by injecting a pulse of energy that not only generates power within the cold metal shell, but thrusts its very essence into the local community, instigating a ripple effect of life and creativity.

The existing Gas Holder provides a challenging structure originally designed as an inhospitable environment shut off from the public. Key in this realisation will be the transformation of the inhospitable cold metal shell into a warm nurturing educational and leisure facility. The cold steel holder structure designed to be air tight for the retention of natural gas. The shell structure stands at 21m high with a diameter of 35m providing a 6-storey void within the 9-storey metal framework envelope. The retention of the existing structure provides significant opportunity to create a multi layered Youth Centre that connects to the adjacent Public Park.

Challenges to overcome

- Retain and repair the existing structure
- Creating a welcoming environment designed to nurture, educate and evolve
- Introducing natural light into a structure designed to keep light out
- Removing the eye sore impact of the redundant
- Connecting this building to the public realm
- Creating a sustainable establishment



Room Connection Diagram based on Jersey Youth Service Discussions

