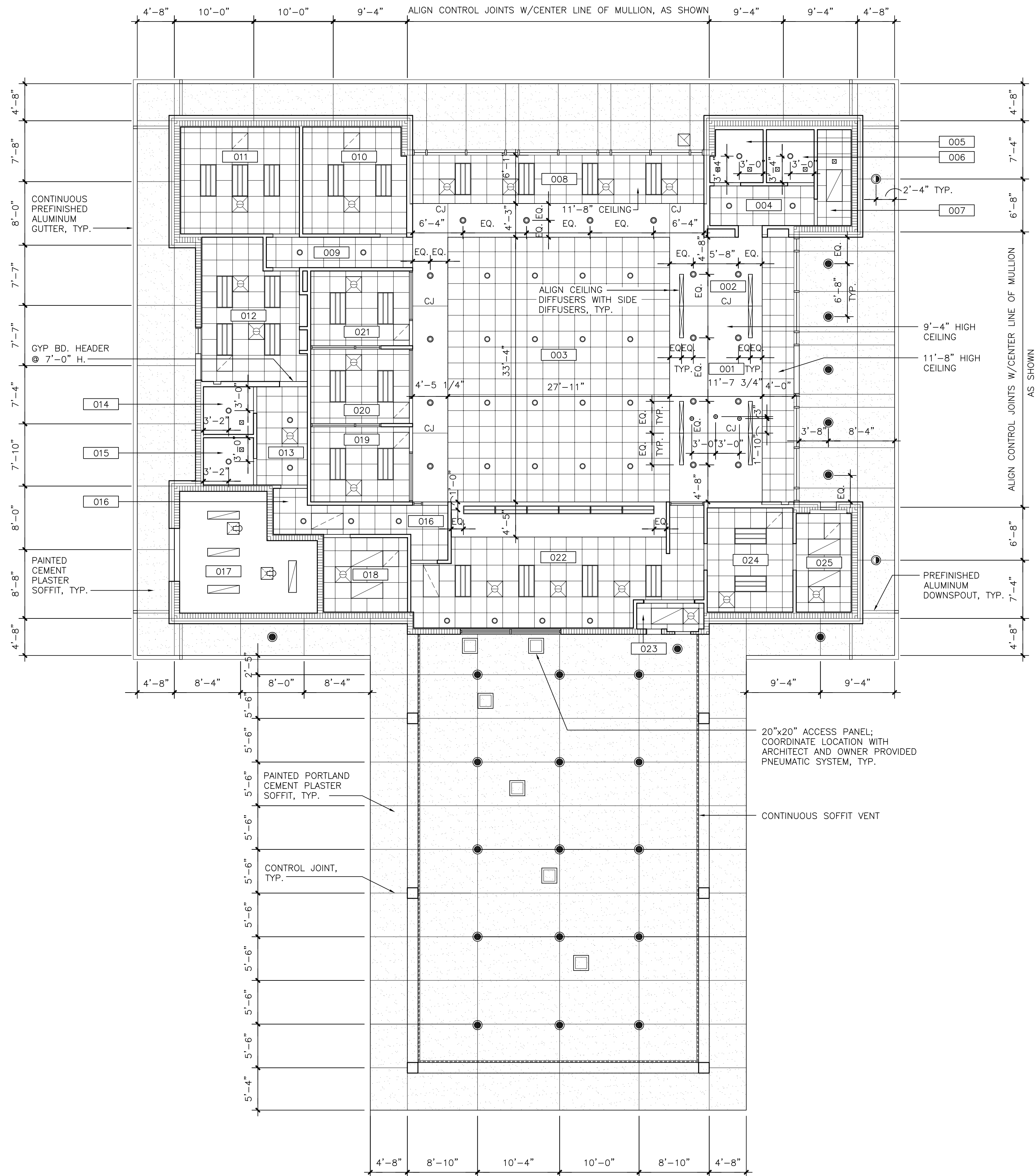


ROOM LEGEND

SPACE	SPACE NAME
001	LOBBY
002	WAITING AREA
003	TELLER LOBBY
004	ALCOVE
005	WOMEN'S TOILET
006	MEN'S TOILET
007	JANITOR
008	MEMBER SERVICES
009	CORRIDOR
010	WORK ROOM
011	CONFERENCE ROOM
012	BREAK ROOM
013	ALCOVE
014	WOMEN'S TOILET
015	MEN'S TOILET
016	CORRIDOR
017	MECH/ELEC
018	SUPPLY
019	OFFICE
020	OFFICE
021	OFFICE
022	TELLER AREA
023	ATM/DEPOSIT CLOSET
024	CASH ROOM
025	ATM/DATA

CEILING LEGEND

	LIGHTING FIXTURES
	SUSPENDED ACOUSTICAL CEILING
	CEMENT PLASTER CEILING
	AIR INTAKE OR OUTLET
	DUCT MOUNTED SMOKE DETECTOR



REFLECTED CEILING PLAN
SCALE: 1/8" = 1'-0"

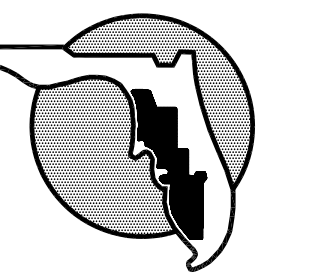
NOTES:
1. ALIGN CEMENT PLASTER CONTROL JOINTS WITH CENTER LINE OF CURTAIN WALL MULLIONS AT EAST AND NORTH SOFFITS.
2. HORIZONTAL CONTROL JOINTS (CJ) AT GWB SOFFITS TO BE CONTINUOUS UP TO THE VERTICAL FACE OF THE GWB SOFFIT.

ARCHITECT
HOLMES HEPPNER & ASSOCIATES ARCHITECTS
109 NORTH BRUSH STREET, SUITE 100
TAMPA, FLORIDA 33602
813-229-0814
REG. NO. AA 0002617

CIVIL ENGINEER AND LANDSCAPE
TOM CONSULTING, INC.
8695 COLLEGE PARKWAY, SUITE 106
FORT MYERS, FLORIDA 33919
239-433-4231
REG. NO. P03000072719

STRUCTURAL ENGINEER
CATALANO ENGINEERING, INC.
120 SOUTH EDSON AVE.
TAMPA, FLORIDA 33606
813-254-1255
REG. NO. 6828

MECHANICAL, ELECTRICAL, & PLUMBING ENGINEER
ANSTON-GREENLEES, INC.
1315 WEST FLETCHER AVE.
TAMPA, FLORIDA 33612
813-963-1919
REG. NO. 6993



SUNCOAST
SCHOOLS
FEDERAL
CREDIT UNION

CAPE CORAL
MEMBER SERVICE CENTER

PROJECT NO.	2856
DISTRIBUTION	DATE
CONSTRUCTION DOCUMENTS	07/11/2007

REFELCTED
CEILING PLAN

A2.4