

LAN

Presse release / *June 2011*



Student residence

The driving idea guiding our project stems from the challenge of responding to the necessity for urban integration and creating optimum comfort for the residence's occupants in a convivial and intimate environment.

The context

The project for a student residence was considered in the context of the urban fabric of the La Chapelle district in Paris and its role in its evolution. The plot is on the corner of rue Philippe de Girard and rue Pajol in the 18th arrondissement, close to the ZAC Pajol, an ambitious redevelopment of former railway yards, on which social, cultural and sports amenities are currently being created.

The district is a very heterogeneous mixture of Haussmannian residential buildings, factories and workshops, and therefore has a richness and wide diversity of situations unusual within Paris itself.

The street and the courtyard

The project is composed of several buildings, whose volumes and voids depend on the context. On the street, three six-storey volumes are separated by two rifts providing access to the residence and vertical circulation. The heights of the buildings at the

back of the plot vary according to neighbouring buildings. In the middle, a spacious courtyard is lit by a rift in the south building, an extension of an existing void.

The courtyard, the heart of the project, provides access to the various buildings and defines their interrelationship. A 15 x 15 metre square, it ensures sunlight for all the rooms and acts as a kind of green lung.

The materials

The strategy of creating a duality between street and courtyard was pursued in the choice of materials. The facades, instead of imposing a single image on the project, participate in creating the varying atmospheres of the spaces they envelop and delimit. The buildings on the street are clad in dark, slate-coloured brick, while the buildings around the courtyard are clad with larch planking with folding louvred shutters in front of the windows and balconies. The facade along the entry passage is also clad

Technical Informations:

Project: construction of a 143-room student residence
Project manager: RIVP
Location: 21 rue Pajol and 65 rue Philippe de Girard, Paris 18
Budget: 8M € HT
Project area: 3,950 m²
Delivery: February 2011
Team: LAN (architects), Franck Boutté (HEQ consultant), LGX Ingénierie (HVAC, main contractor)
Project leaders: Sebastian Niemann, Venezia Ferret

with larch and announces the feeling of the space within. All the ground and wall surfaces in the courtyard are clad with the same light-coloured, flexible material, normally used for sports areas and playgrounds.

The choice of materials was dictated by technical and architectural concerns. Our research was guided by a desire for durability and the sober, refined and classical nature of our project.

The circulations

Generally speaking, the empty spaces in the courtyard and circulations could be said to be 'junk space' in that they are by-products of the design of the buildings. The project's ambition was to give these spaces so much quality that they create a genuine 'plus' for residents. The exterior spaces, interacting with the communal spaces and acting as a buffer between private spaces, are not merely for circulation but provide the conviviality our project seeks to create. As these spaces were not part of the project specifications, their uses can be defined and developed by residents.

The specifications

The brief specified the construction of a student residence of around 150 rooms, communal spaces, administrative premises and a caretaker's apartment, with RIVP acting as project manager for the CROUS, which will run the residence.

As one enters the residence via the rift on the left, one successively discovers the reception spaces, the administrative premises (on the corner of the street and the passageway), the communal facilities and the study and leisure areas around the courtyard.

The 143 rooms have three different typologies. Students have furnished rooms with an average surface area of 18m², with a bathroom and a kitchen area. The view of the courtyard creates a calm atmosphere conducive to concentration and study. The desks are always located near an outside view in order to benefit from natural lighting. Ten rooms were specially designed for people with reduced mobility.

Energy performance

The project complies with the "Habitat and Environment" label's VHEP

specifications.

A combination of compactness, treatment of the envelope, and solar heat coupled with high-performance ventilation and heating (urban heating and solar panels) creates pleasant and comfortable accommodation. The concrete structure, insulated on the outside with 12 cm of mineral wool, brick or wood cladding and high-performance double-glazed fittings, provides efficient thermal insulation. In winter the buildings retain their interior heat, and in summer their exterior insulation reduces solar and internal overheating, while inertia enables the capture of daytime heat and its retention during the night.

For further information,
please contact:

LAN Architecture
Margherita Ratti
+33 1 43 70 83 32
mr@lan-paris.com

LAN (Local Architecture Network)

was created by Benoit Jallon and Umberto Napolitano in 2002, with the idea of exploring architecture as an area of activity at the intersection of several disciplines.

This attitude has developed into a methodology enabling LAN to explore new territories and forge a vision encompassing social, urban, functional and formal questions.

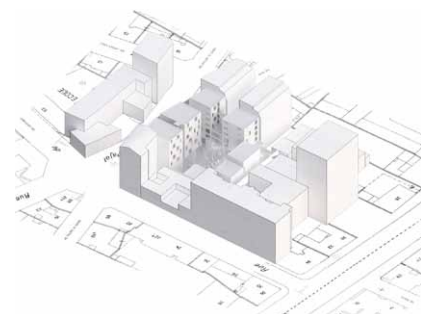
LAN's projects seek to find elegant, contemporary answers to creative and pragmatic concerns.

LAN has received several awards: the Nouveaux Albums de la Jeune Architecture (NAJA) prize awarded by the French Ministry of Culture and Communication (2004); the International Architecture Award from the Chicago Athenaeum and the European Urban Centre for Architecture, Art, Design and Urban Studies, the Archi-Bau Award, the Special Prize at the 12th World Triennale of Architecture, Sofia (2009); the AR Mipim Future Projects Award and the Europe 40 Under 40 Award (2010).



Urban Integration.

The site's strategic position at the junction of several streets in a bustling Paris district channelled our research towards a lively façade providing views into the heart of the block and encouraging appreciation of this inner space.



Axonometric view



The two vertical rifts and the ground-floor transparency created by the bicycle park draw attention inwards and define this project emulating traditional buildings in Paris's former inner suburbs.



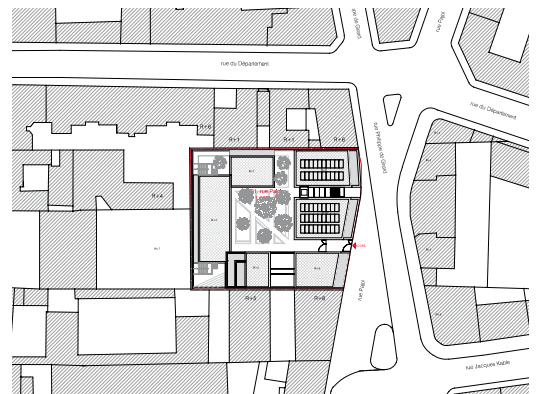
Building's facade



Continuity.

The project is developed in a double scale perspective: one is the street's scale and the other is the building courtyard's one, respectively in a vertical and in an horizontal volumetric system. The urban strategy focalize on contextualising the best the project into the existing landscape, extending the voids of the suburb's tissue in aim to

not make interfering the new construction on the habitual lightening of the neighbourhood.

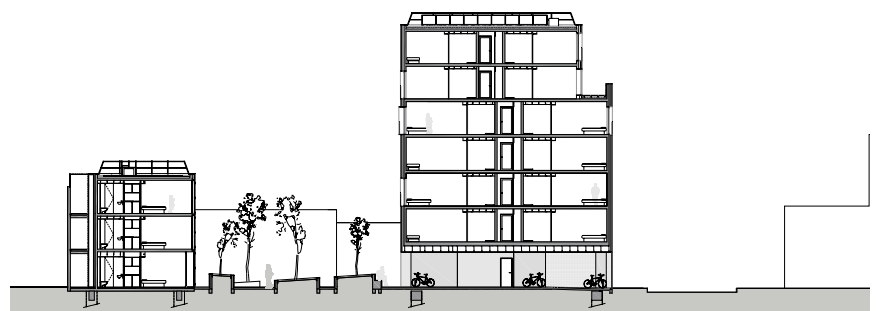


Site plan



Transparencies.

This communal space is related directly to the public space outside by the vertical rifts in the block on the street side. The transparency this creates strengthens the link between the plot's exterior and interior and attracts attention to the activity in the courtyard.

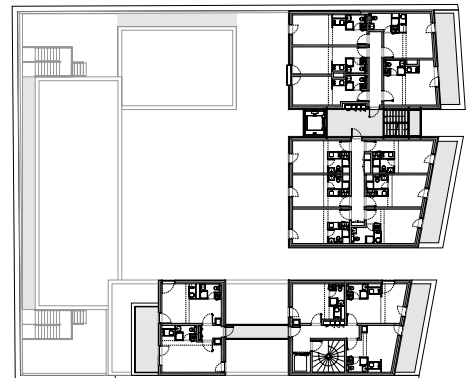


Section BB



Circulations.

The circulation system is very legible: the four vertical circulations are located at the plot's four corners. All circulations are lit naturally so that the landings can act as meeting places.

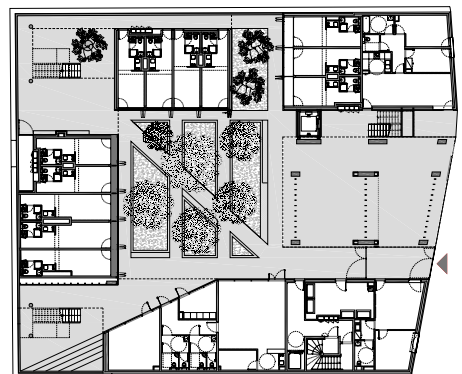


Fifth floor



Common spaces.

The exterior (common spaces) corridors retain an ambiguity with regards to their usage. They are in fact conceived not solely as distributors but rather as collective spaces where social gatherings could occur.

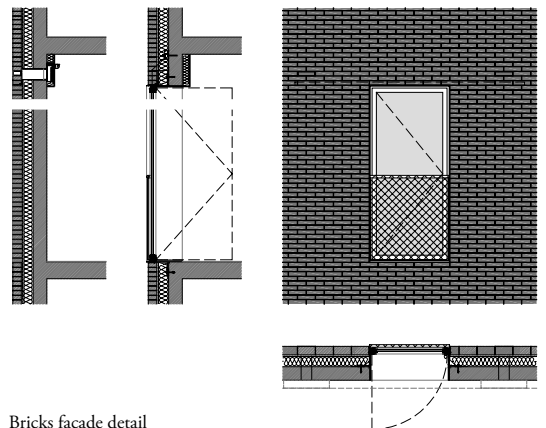


Ground floor



Bricks.

The elevation facing the street is clad with slate colored bricks. The nuance and the texture of the surface, as well as the façade's composition contribute to the over whole dynamic effect.

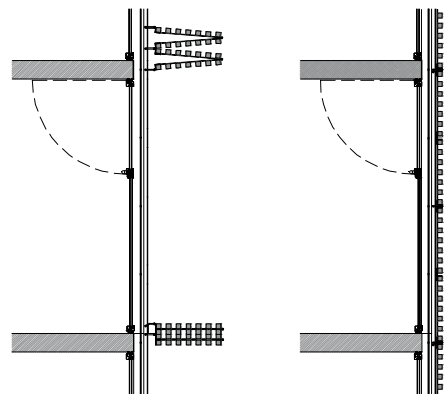


Bricks facade detail



Wood.

The elevations facing the interior courtyard are clad with thin vertical wood panels. Same facade treatment continues in front of the openings of the windows, where the grid becomes shutters. Which gives a strong unity to the whole courtyard elevations.

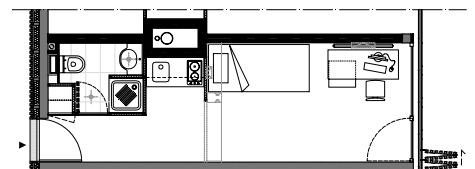
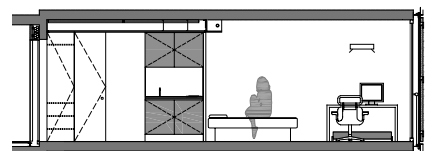


Wood facade detail

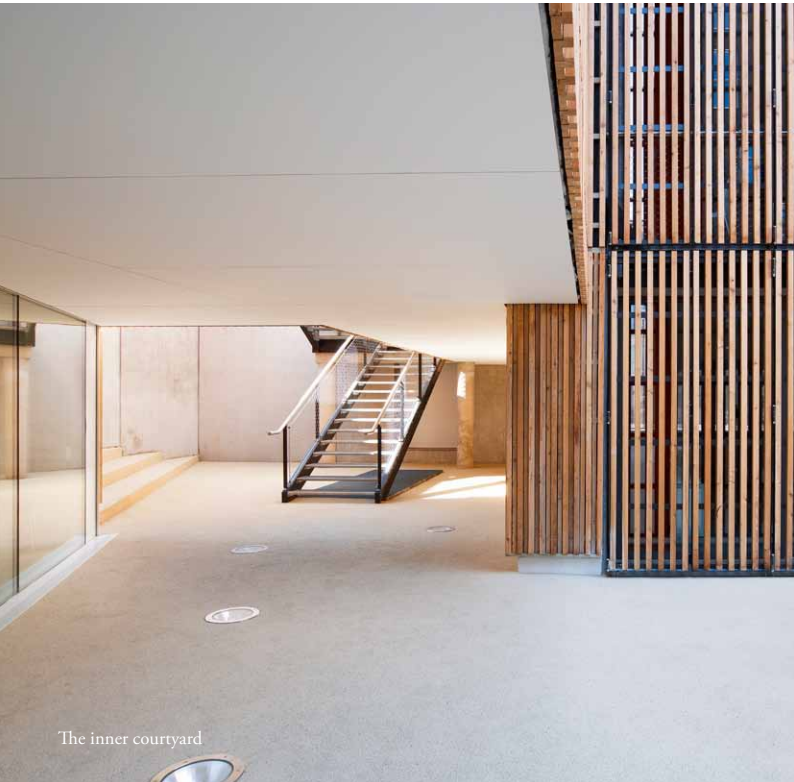


The rooms.

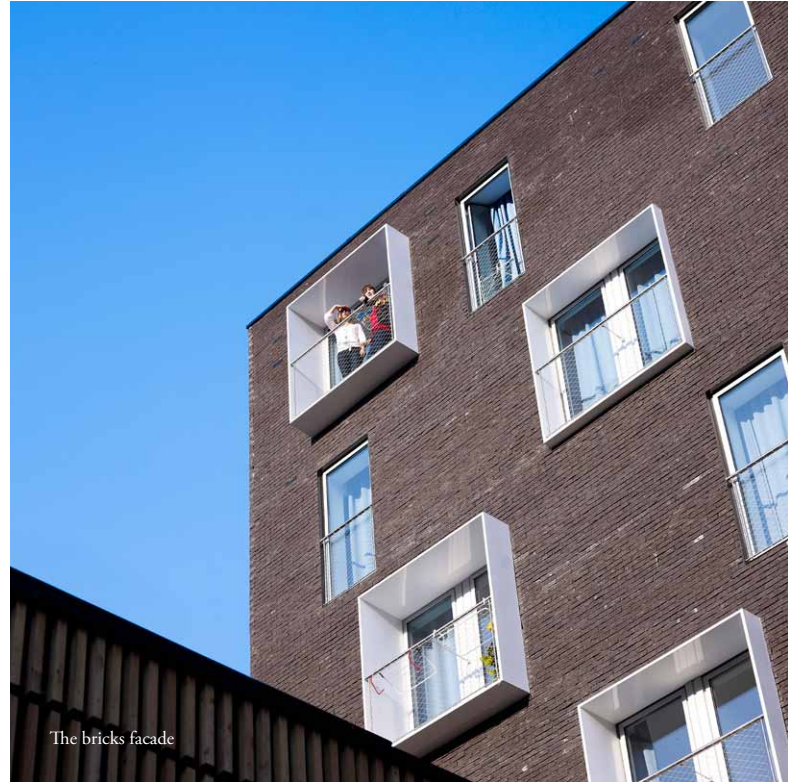
Our prime concern in the design of the students' rooms was to create sunny accommodation that is easy to live in and personalise.



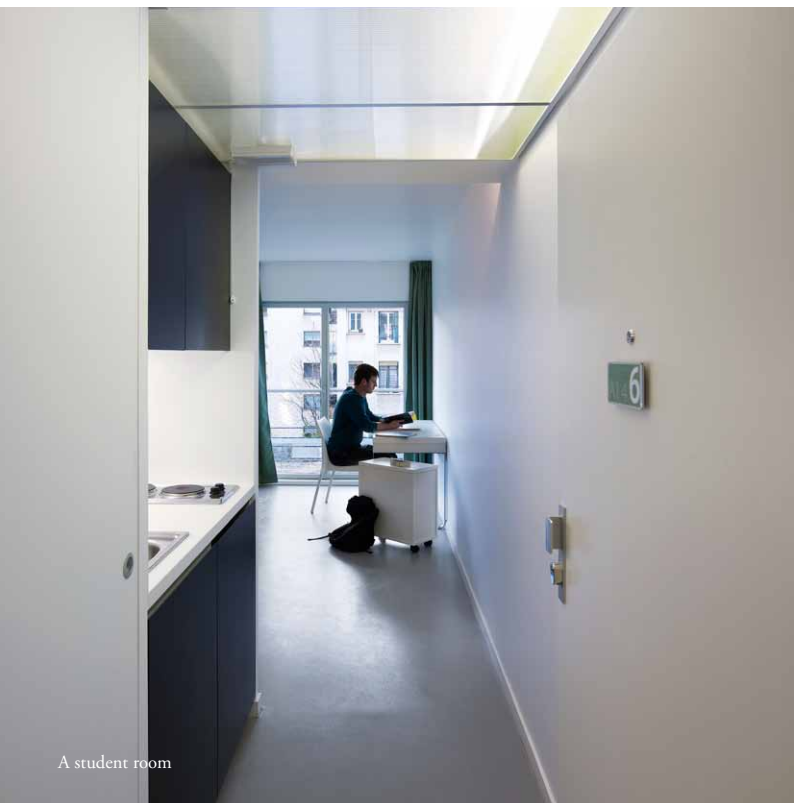
Section and plan of a type room



The inner courtyard



The bricks facade



A student room



View from the street

Photo shooting by
Julien Lanoo.

To obtain press images please contact:
Martina Margini
mma@lan-paris.com