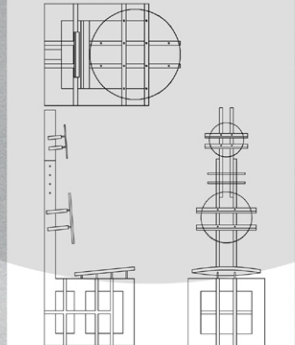


A CHAIR FOR

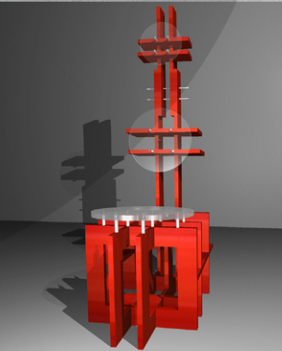
CHAIRS FOR CHAIRITY FOUNDATION



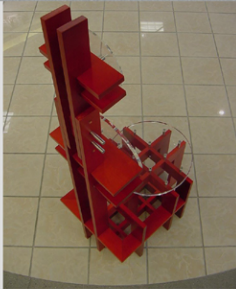
OUTDOOR



THE SPIRIT



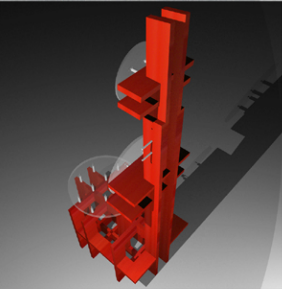
GOTTFRIED + GARCIA / ARCHITECTS / AIA, P.A.



ARTS FOUNDATION

The chair as designed by Gottfried + Garcia Architects, AIA and built by Matt Alexander of Aoman Designs represents a charitable act of love, mirroring the acts of kindness and giving provided by the "Make a Wish Foundation" and all of it's members. The clear Plexiglas circles off ascending sizes and thicknesses, floating above the structure of the chair represent the inspiring "SPIRITS" of the children granted wishes by the charitable "Make a Wish Foundation". The orthogonal structure of the chair and the numerous stainless steel supports represent the organization of the "Make a Wish Foundation" and all of the generous people who give of their time and money; without which, countless inspiring acts of kindness and moments of joy (granted wishes) for the children served by this wonderful organization could not be possible.

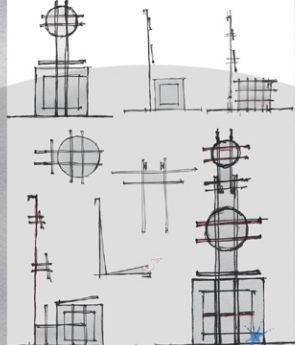
TITLED:



WISH



MAKE



ASCENSION

