

Materials

The existing steel facade is to be retained in as one of the main driving aspects of the scheme. The material palette chosen represents Jersey Industrial era with modern takes on hard wearing materials that represent the past but provide a range of contrasting colours and textures providing each pod with a different identity.

The retention of the steel facade transcends other gas holder renovations such as "Kings Cross, London" by retaining more than just the external framework. The jade coloured steel facade is to be repaired and refurbished to retain the historical fabric of the gas holder that provides the iconic form and appearance.

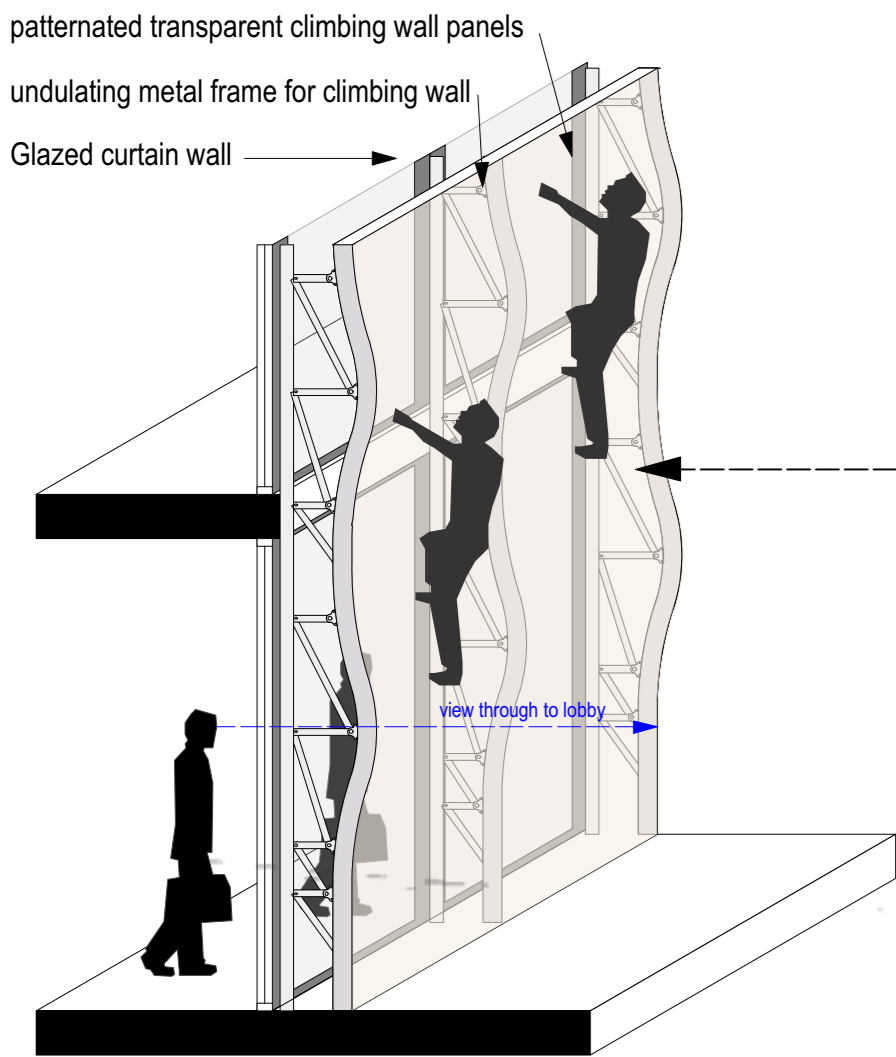
Introducing Standing Seam Vertical Zinc as an external finish to the elevated pods provides a modern lightweight approach contrasting to the strong Jade colour of the existing metal facade. Zinc provides a long lasting finish able to survive in harsh salt air climates such as Jersey. It is a very versatile material able to be laid to any pattern of shape required and can withstand high winds and heavy rain. Over the last 20 years in Jersey, Zinc has increased in popularity especially on buildings of historical relevance and modern developments.

The strong vertical lines of the zinc contrast with the existing steel skin which is laid out in an overlapping horizontal pattern.

These two external materials emphasis the old and the new with the pods breaking free of the glass roof beyond the steel skin highlighting the Jersey Youth Holder standing proud of the Gas Holder structure whilst also respecting its heritage.

The free flowing forms being introduced (structural rings, flowing roof garden deck and so on) outside of the gas holder is to be clad in an oxidised copper with its dark Jade tone paying homage to the existing steel facade whilst providing a more modern take on the steel facade.

Internally the three pods are provided with separate images providing contrasting materials creating three different internal finishes, textures and patterns designed to contrast whilst represent the industrial era of Jersey all within the steel shell.



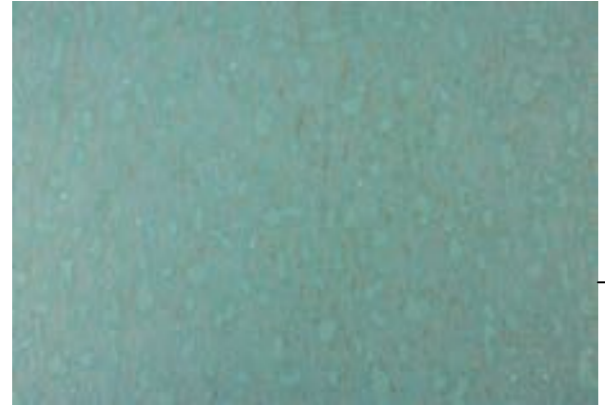
Climbing wall axonometric 1:50



Standing Seam Zinc



Jade Coloured Steel Facade



Oxidised Copper (Patina)



Vertical Cedar Cladding



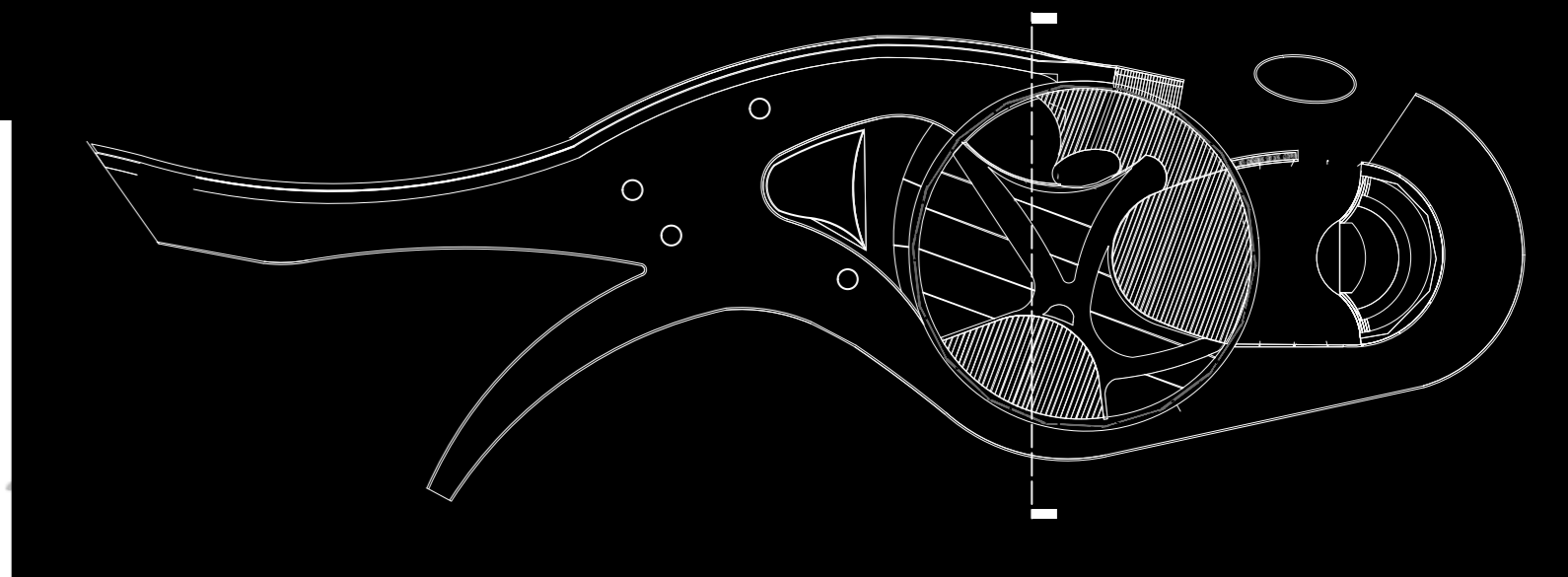
Obscured glass with climbing wall effect



Black and Red Aged Brickwork



Section



two way performance area

Section

