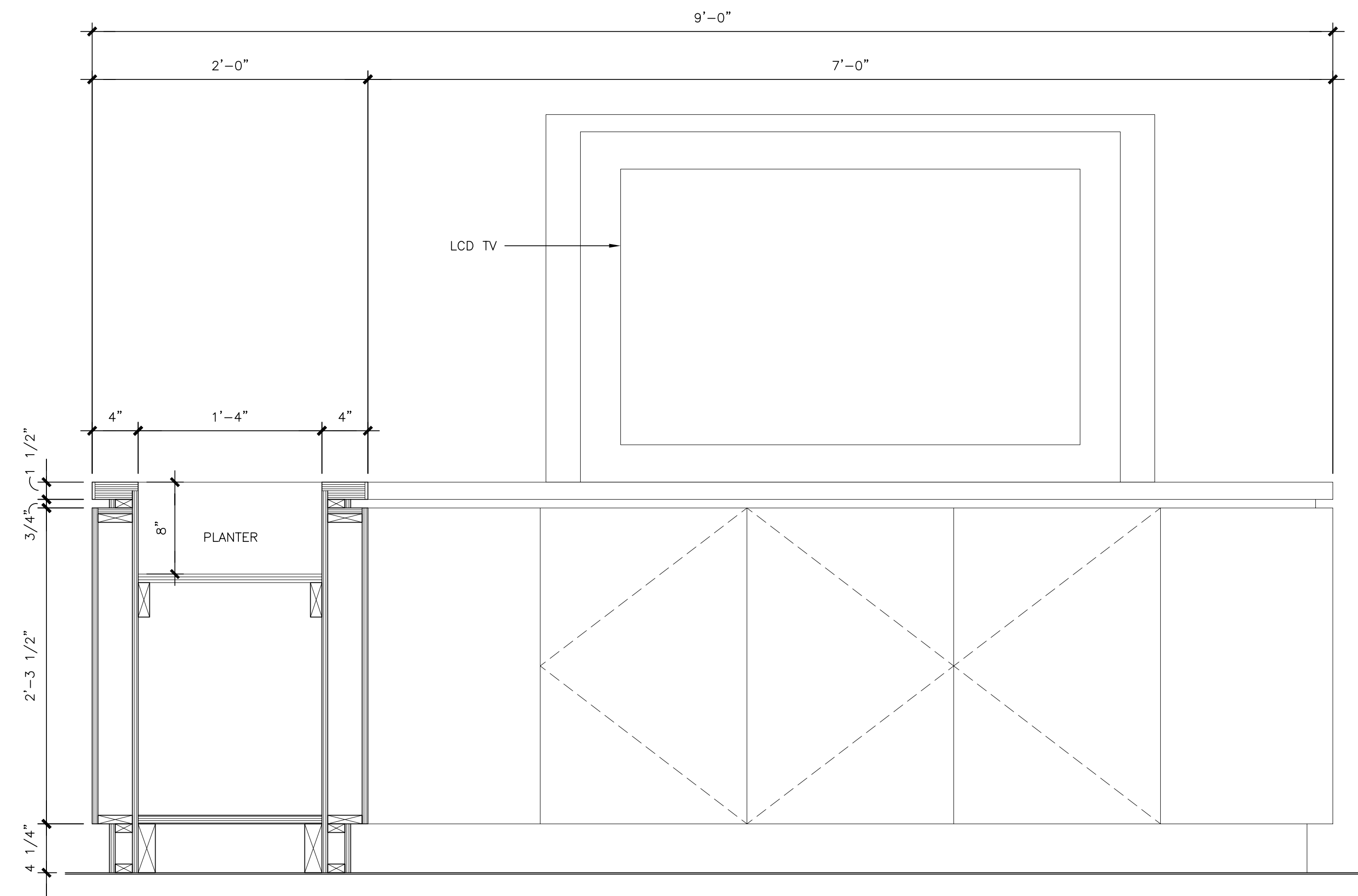
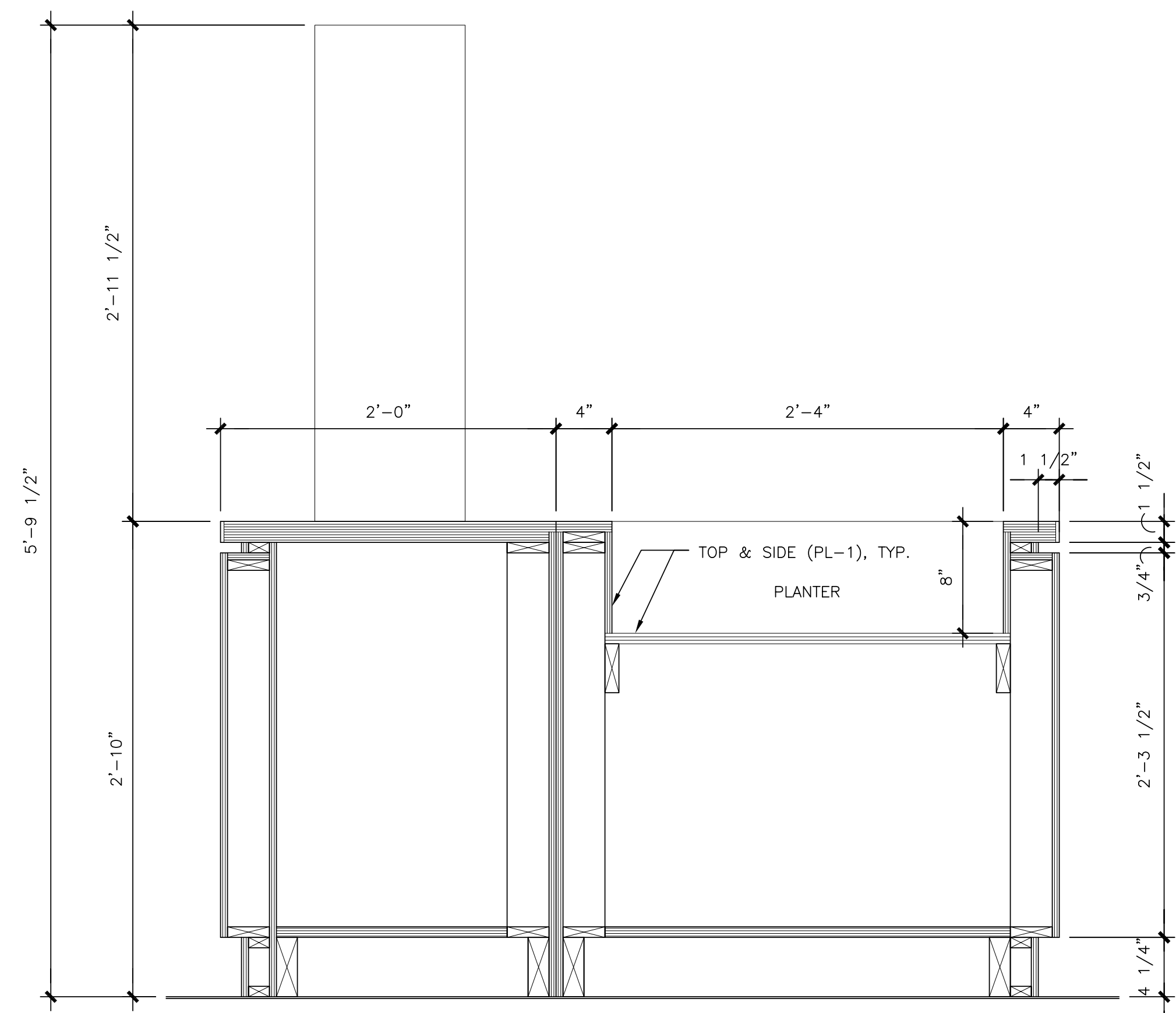


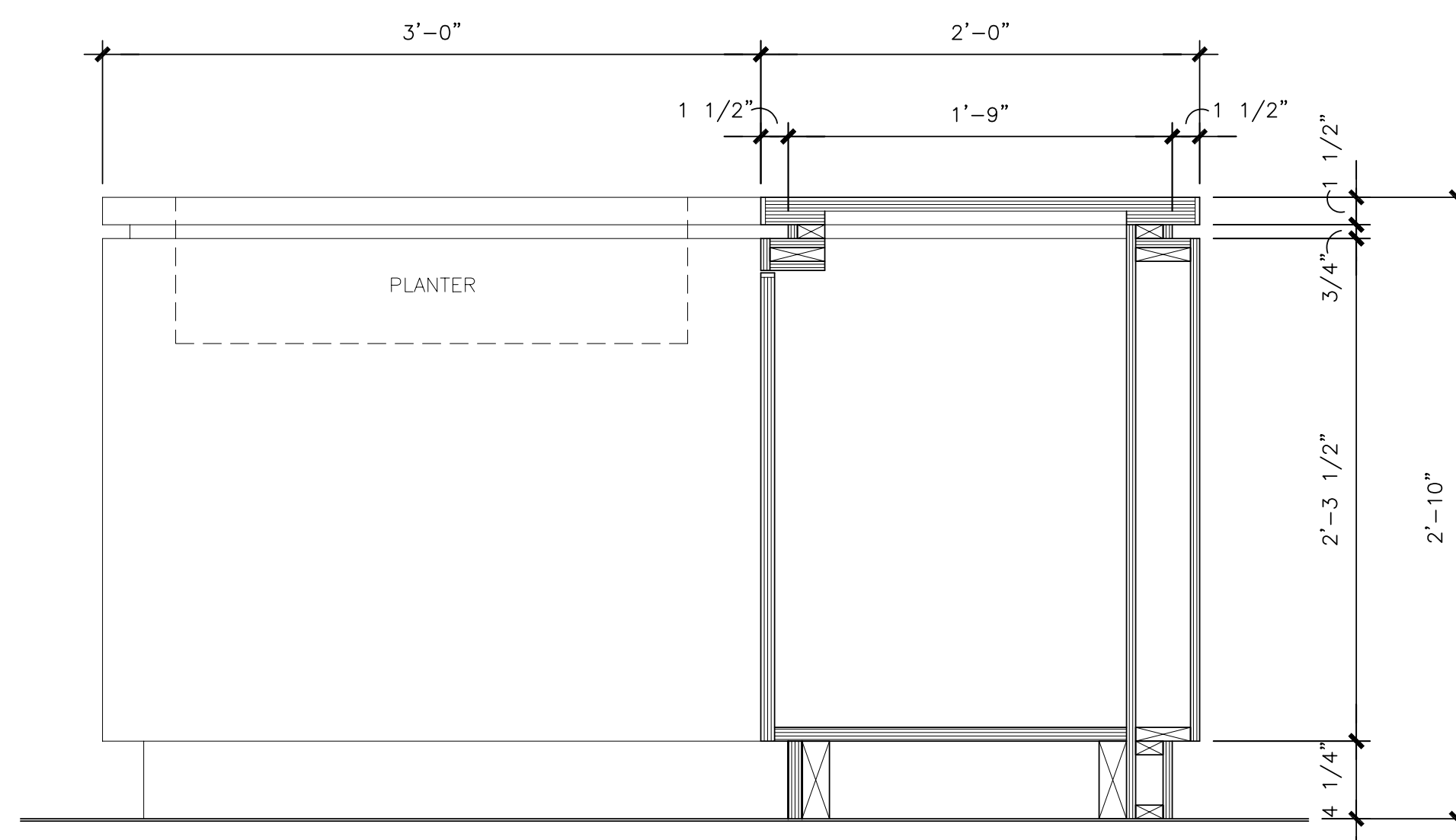
1 CABINET SECTION  
A8.4 SCALE: 1-1/2"=1'-0"



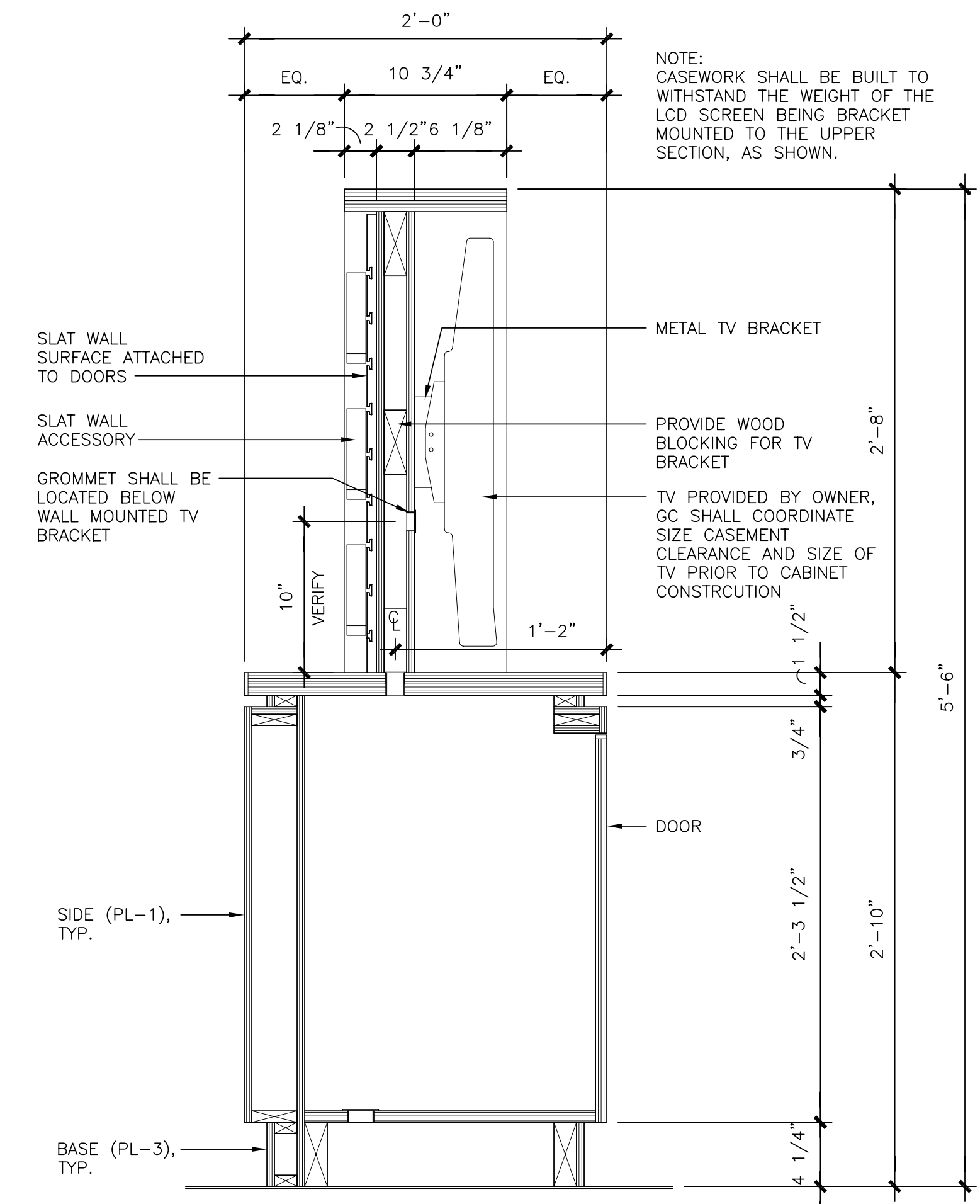
2 CABINET SECTION  
A8.4 SCALE: 1-1/2"=1'-0"



3 CABINET SECTION  
A8.4 SCALE: 1-1/2"=1'-0"



4 CABINET SECTION  
A8.4 SCALE: 1-1/2"=1'-0"



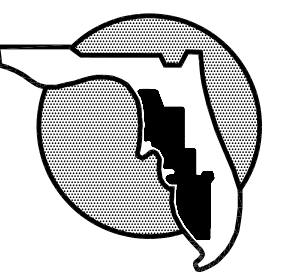
5 CABINET SECTION  
A8.4 SCALE: 1-1/2"=1'-0"

ARCHITECT  
HOLMES HEFNER & ASSOCIATES ARCHITECTS  
109 NORTH BRUSH STREET, SUITE 100  
TAMPA, FLORIDA 33602  
813-229-0814  
REG. NO. AA 0002617

CIVIL ENGINEER AND LANDSCAPE  
TDM CONSULTING, INC.  
8695 COLLEGE PARKWAY, SUITE 106  
FORT MYERS, FLORIDA 33919  
239-433-4231  
REG. NO. P03000072119

STRUCTURAL ENGINEER  
CATALANO ENGINEERING, INC.  
120 SOUTH EDSON AVE.  
TAMPA, FLORIDA 33606  
813-254-1255  
REG. NO. 6828

MECHANICAL, ELECTRICAL, & PLUMBING ENGINEER  
ANSTON-GREENLEES, INC.  
1315 WEST FLETCHER AVE.  
TAMPA, FLORIDA 33612  
813-963-1919  
REG. NO. 6993



SUNCOAST  
SCHOOLS  
FEDERAL  
CREDIT UNION

CAPE CORAL  
MEMBER SERVICE CENTER

PROJECT NO. 2856  
DISTRIBUTION DATE  
CONSTRUCTION DOCUMENTS 07/11/2007

CABINET  
SECTIONS AND  
DETAILS

A8.4