

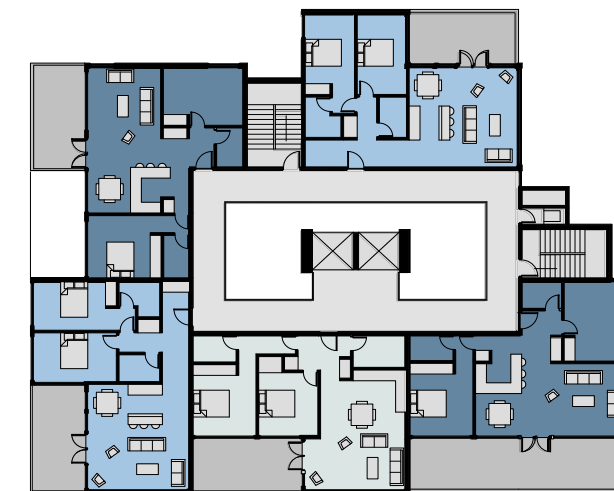
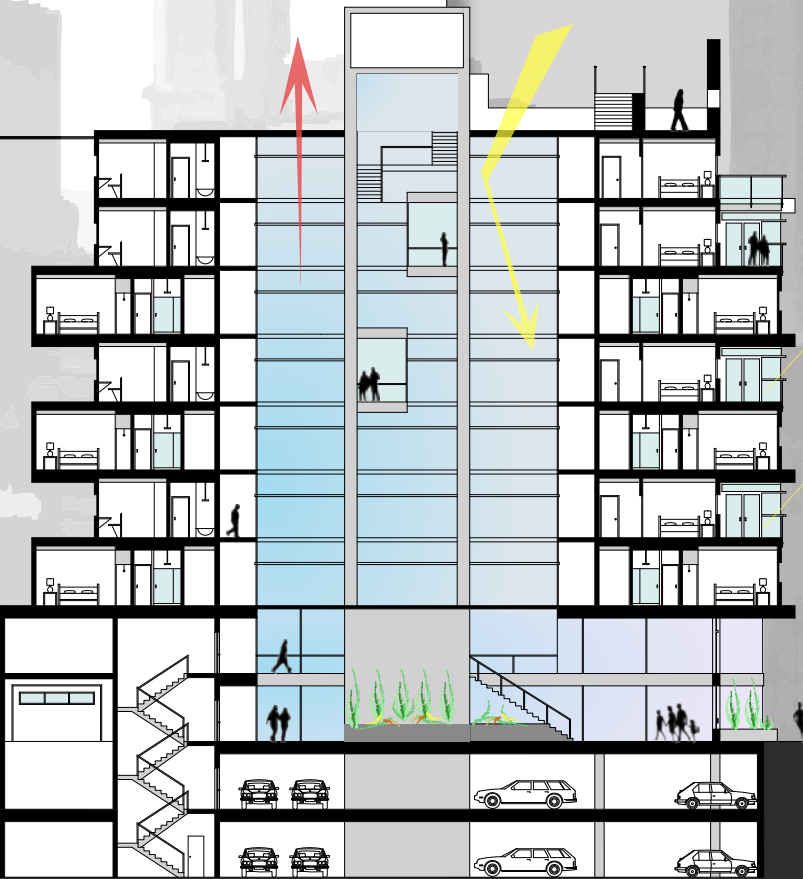
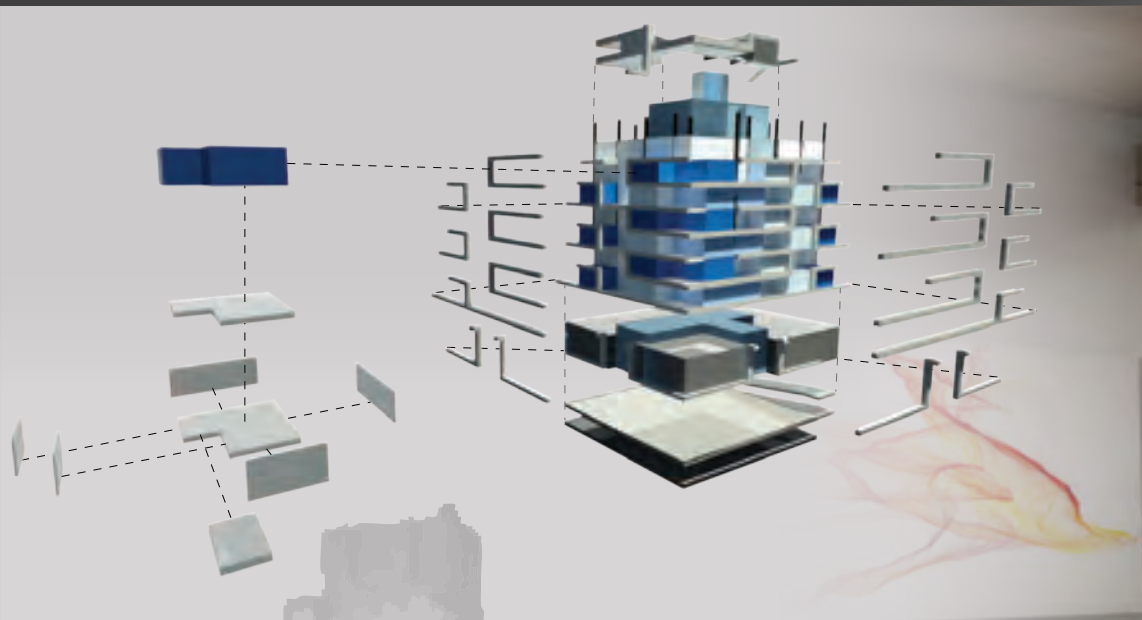
NYC Housing

Modular Construction

3rd Year : 6 weeks

Problem:
Design a mixed use development located in southern Manhattan. The building program requirements consist of forty residential units with parking, two floors of leasable commercial space, and a roof terrace.

Solution:
The design offers each resident a two bedroom loft with a private balcony that allows seclusion from neighbors, but engagement with the surrounding city. Each unit is entered off of an airy central atrium that stretches through the entirety of the building. The facade is derived from the articulation of window details and floor/unit delineations together crafting an appearance of building with human scale and character.



Unit Plans

