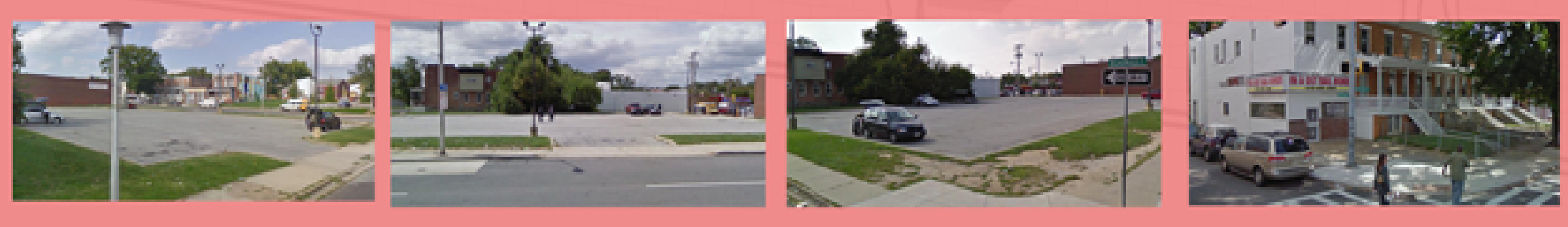


Park Heights Community Centre

Baltimore Maryland | Glenn Washington | Thesis Studio 502

The Park Heights Community is in an urban neighborhood in the heart of west Baltimore City. This community has been plagued with a drug problem for some time now. This area was once a close knit community but the drug problem, and the crime that came along with the drugs has changed that. I plan to offer a solution to this problem through architecture. Proposing a building that brings the community back together and offers help for those people who have been affected by the drug problem.



Research Imagery



The above image is a piece of travertine from the facade of the Staatsgalerie. This image was used to further understand the concept of layering, looking deeper into how different layering systems are created. The travertine is created over hundreds of years layer by layer until the finished product is the image above.



The above image is a rock formation found within a cave. The layers are clear to see, even as they spread apart in some areas and converge in others. There are also voids within the layers that have been filled over time. The layers form in the manner they do because of the pressure the void filling elements puts on the layering elements through compression.

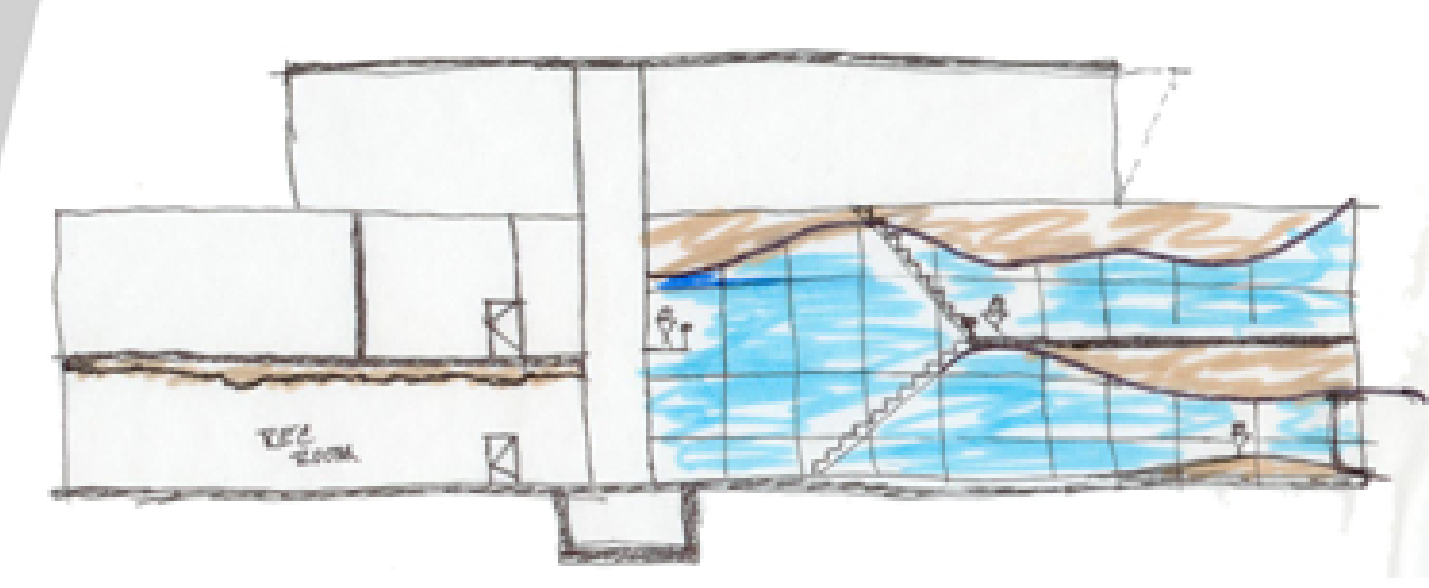
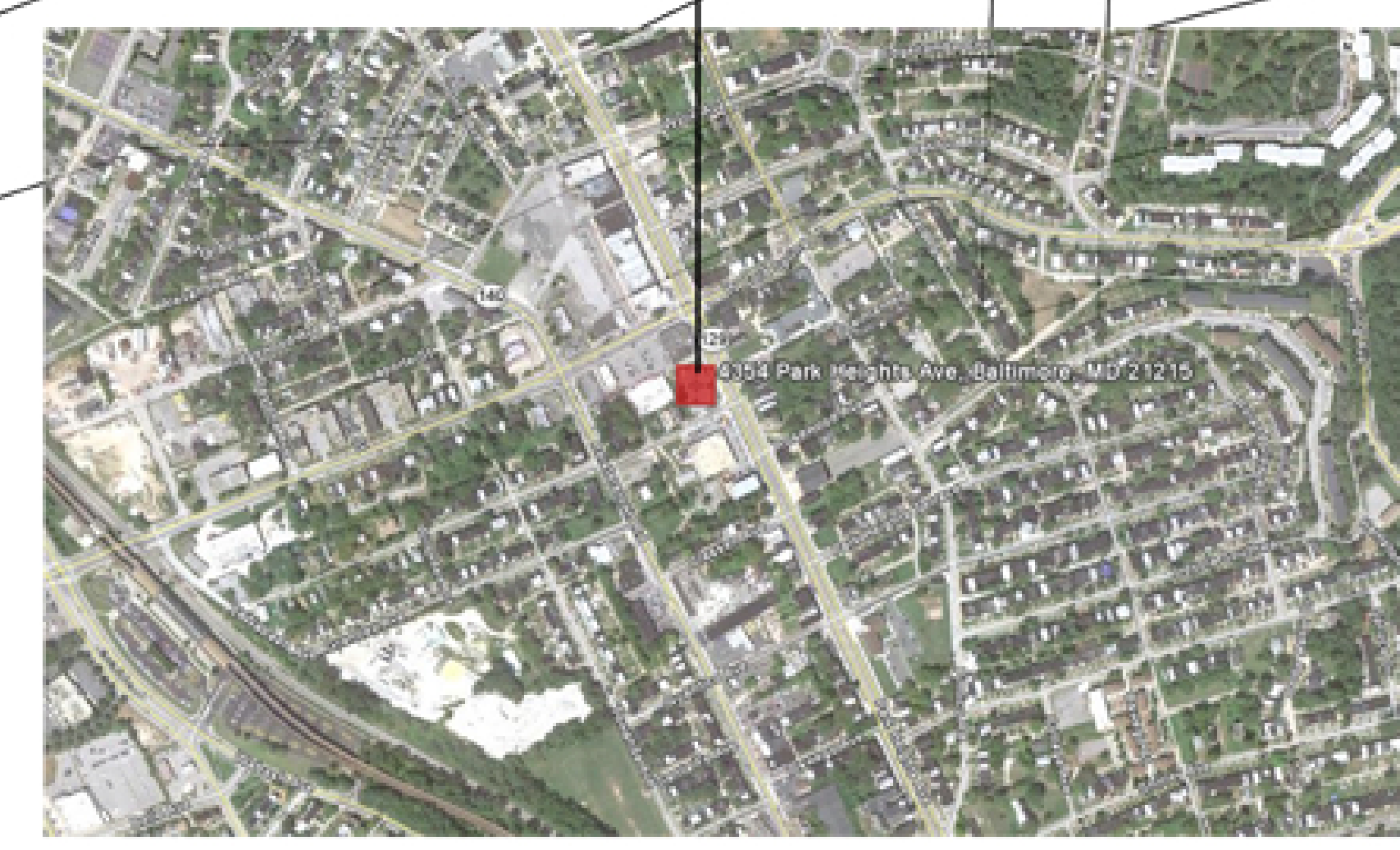
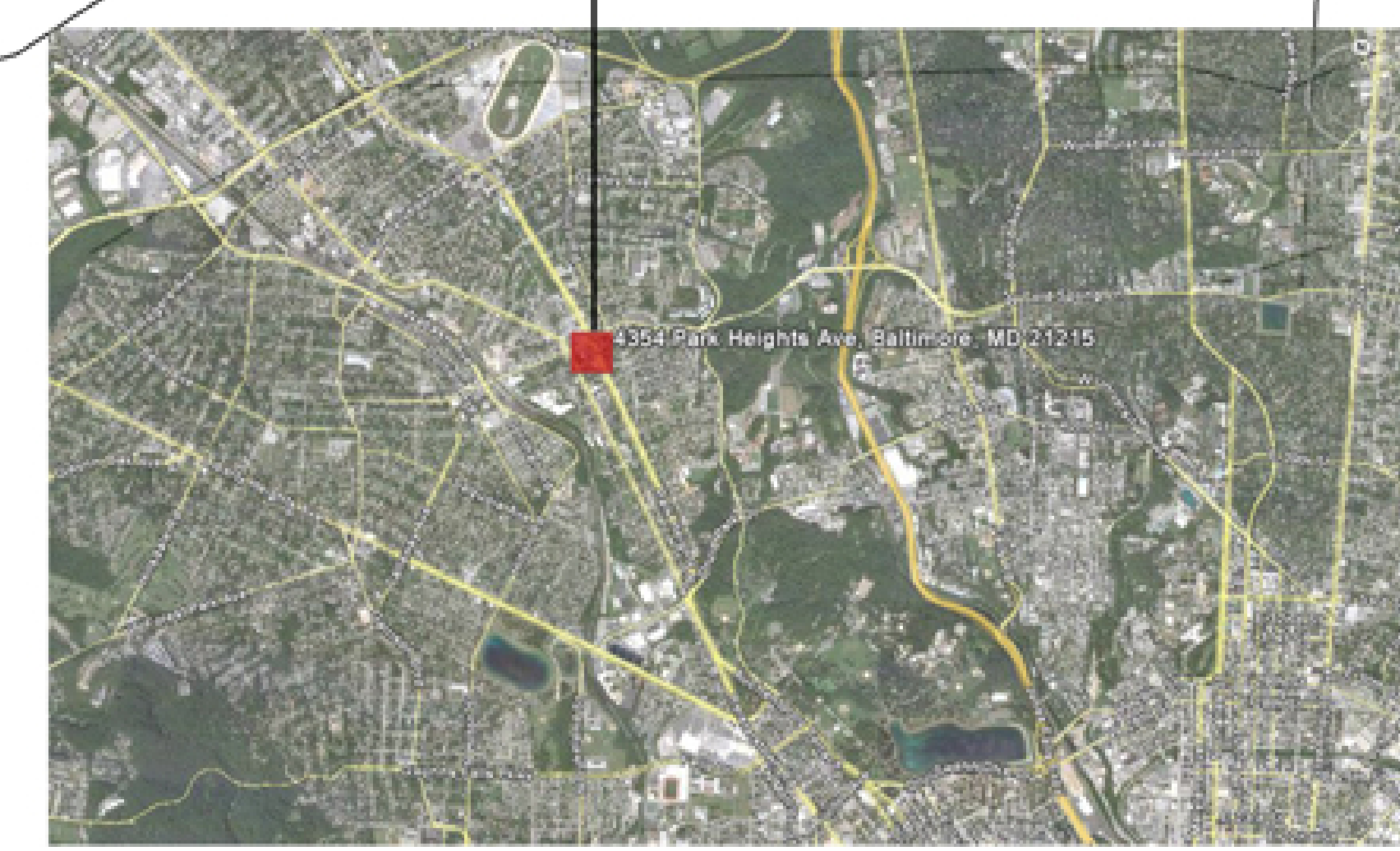
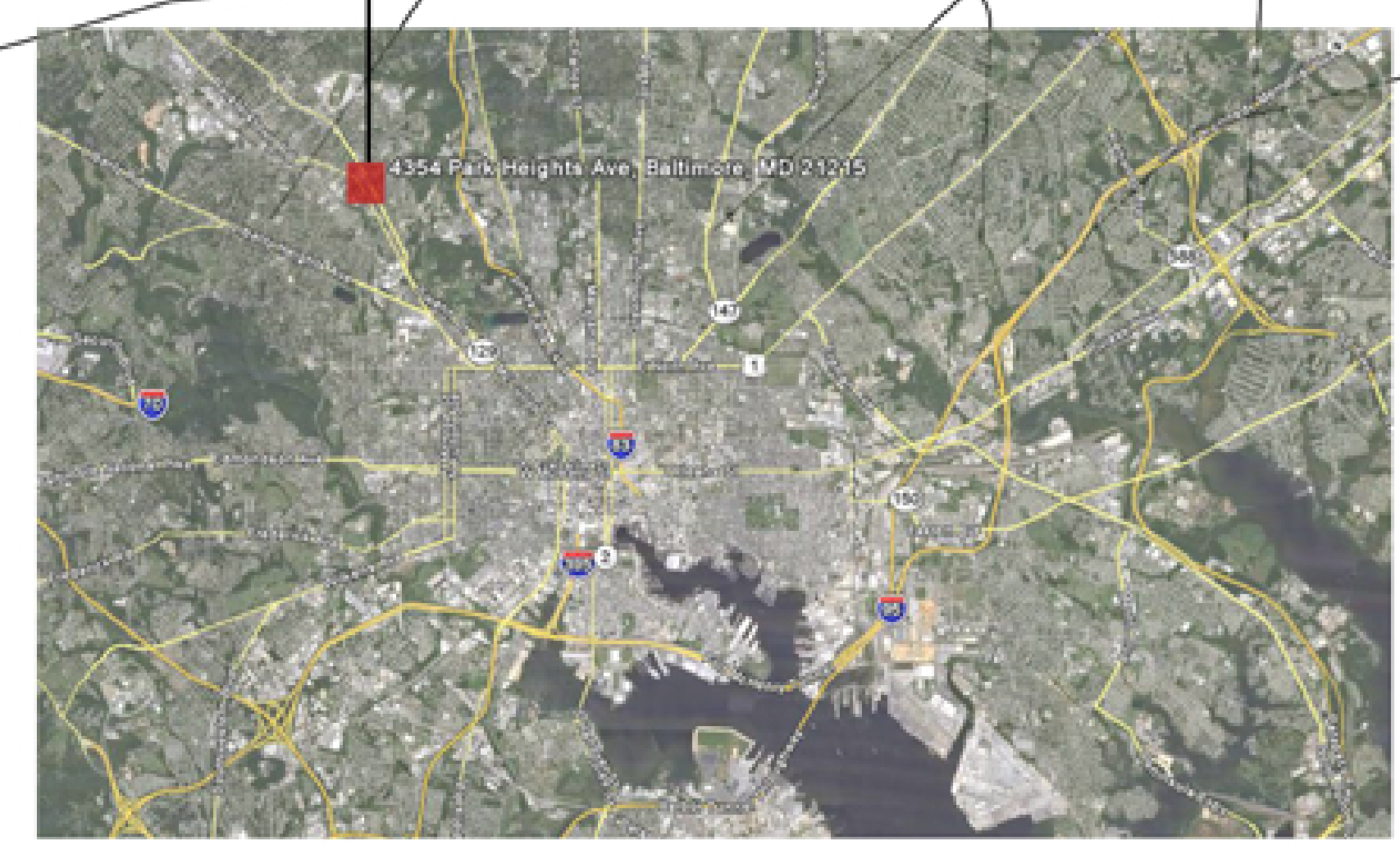


The above image is of pages in a book that have been purposefully formed in such a manner to create a piece of art. This form of layering was used to better understand that layered forms can be created with intent in mind. This method did not use time as the defining factor to create the form.

The Park Heights Community is a neighborhood rich in culture. Over time many different cultures have inhabited the community, ranging from Haitians, Blacks, Jamaicans, Jews, Trinidadians, Caribbean, and the Czechs. As these cultural groups move through this particular neighborhood they tend to bring along their own things which are pertinent to their culture. Then as one group migrates and another moves in some of those pertinent cultural things are left behind. This type of migration process then begins to create a layers. Not in a linear manner, but these layers tend to overlap one another which makes it difficult to see where one begins and another one ends. This is similar to the blending of two or three cultures within a community. At some points there are voids within the layers, similar to how there is a piece missing within the community.

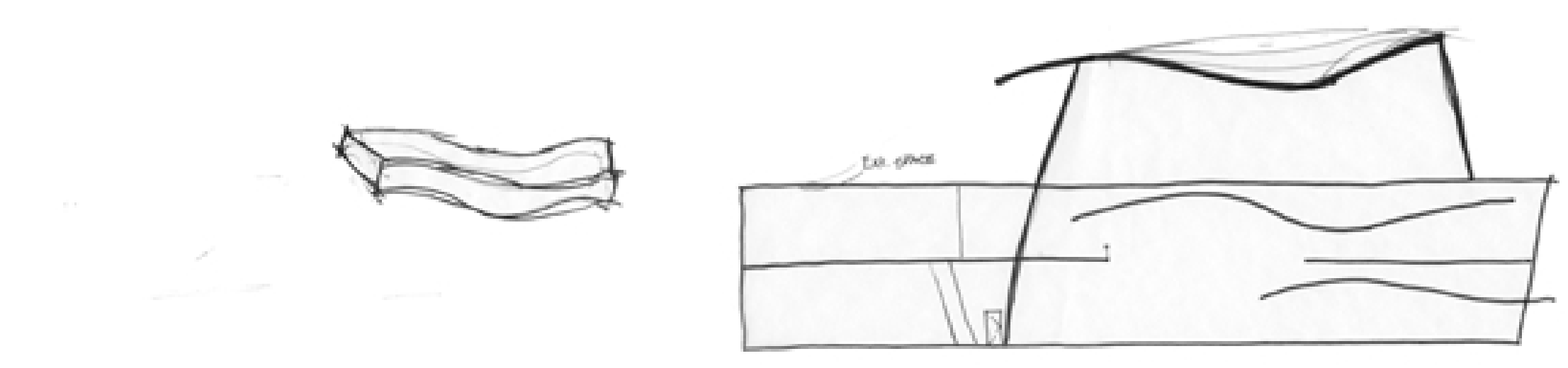
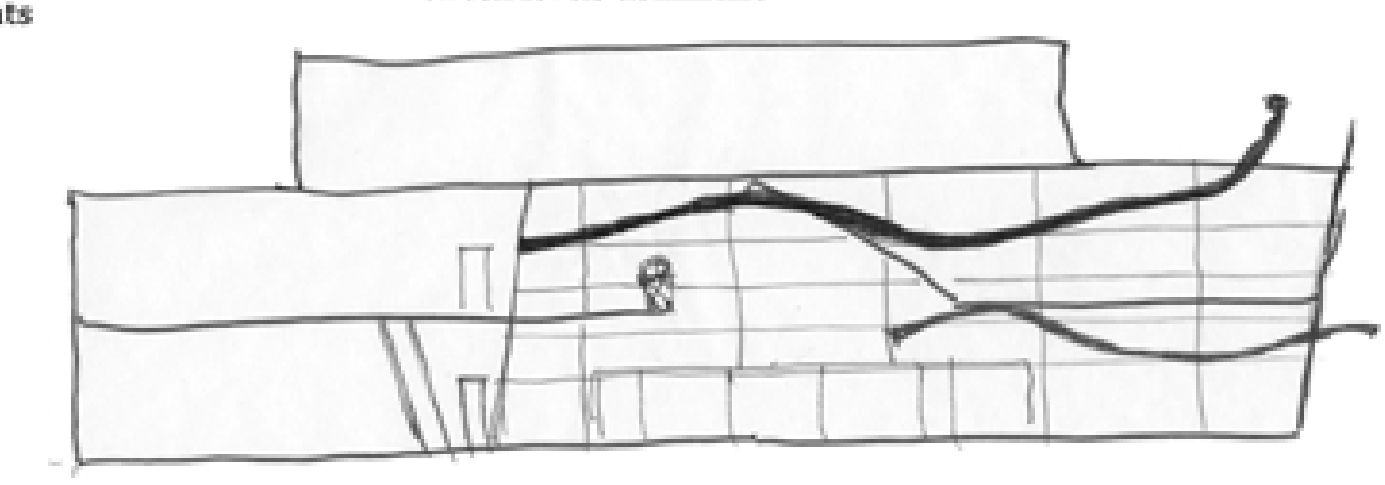
Site Plan

Scale: 1/32"=1'



When designing the community center close attention was paid to circulation space throughout the building. The idea of compression and expansion needed to come through in section. This type of design creates points of discovery within the building; transitioning from a compact space to an expansive one affects the occupants emotions as they travel from space to space.

Maintaining the integrity of the concept from level to level was imperative to the center's design. The ideas that seem concrete and thoroughly expressed in level one had to be just as expressive on the levels above. In order to achieve this I made an attempt to diminish the elements that act as a barrier between levels while making the elements that transition between levels dominant.



The roof was the final element that completed the building's form. It's an element that is consistent with the building's interior but is exclusively visible from the exterior.

Conceptual

Thinking