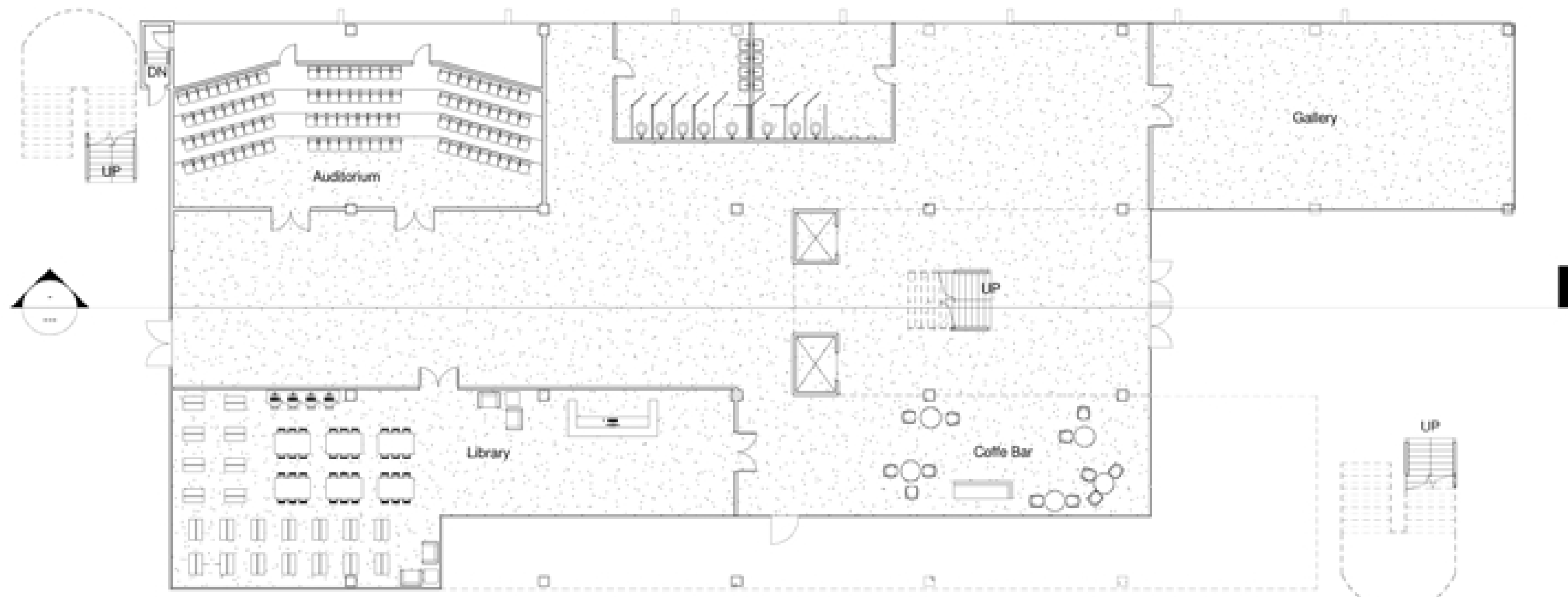
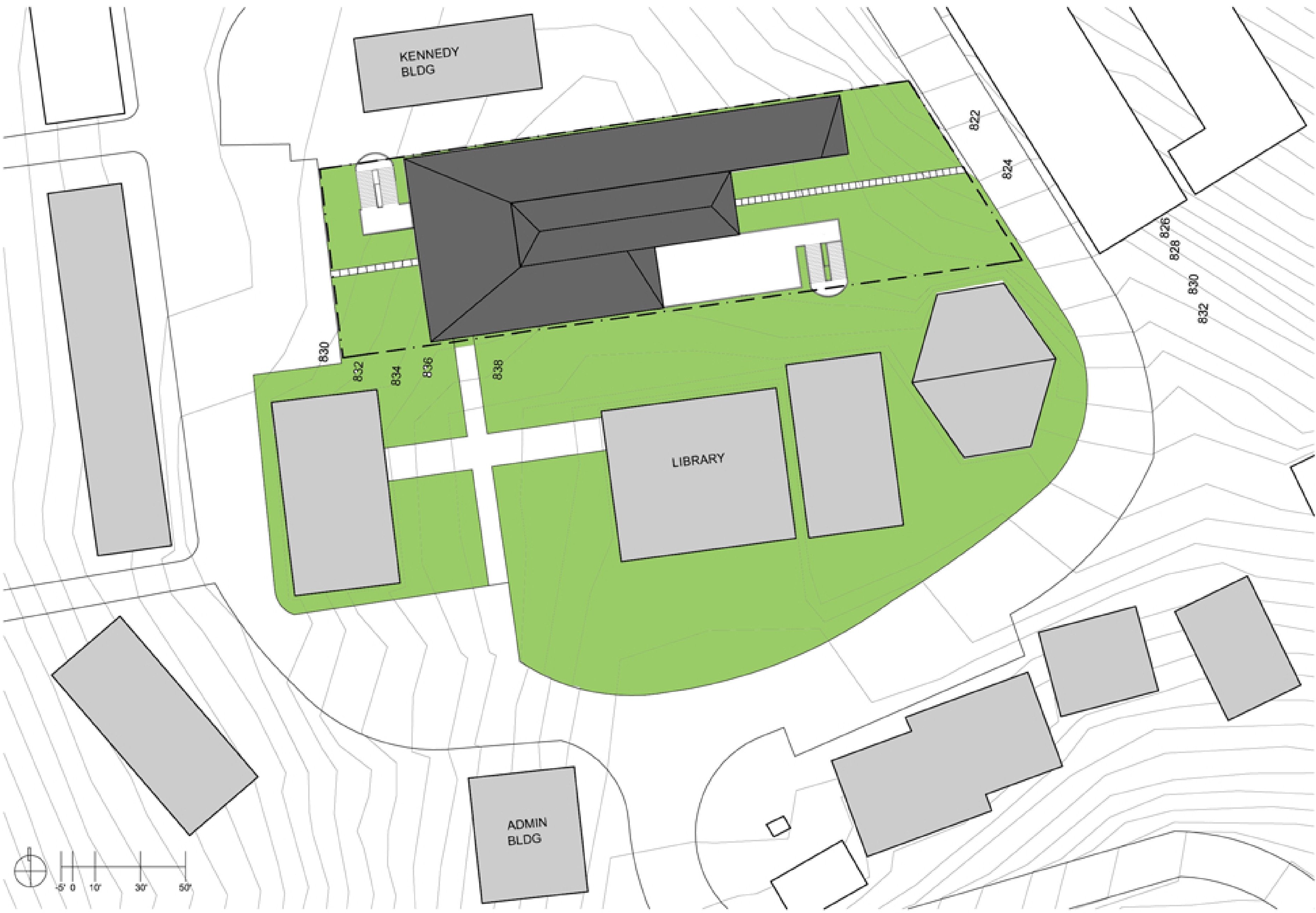


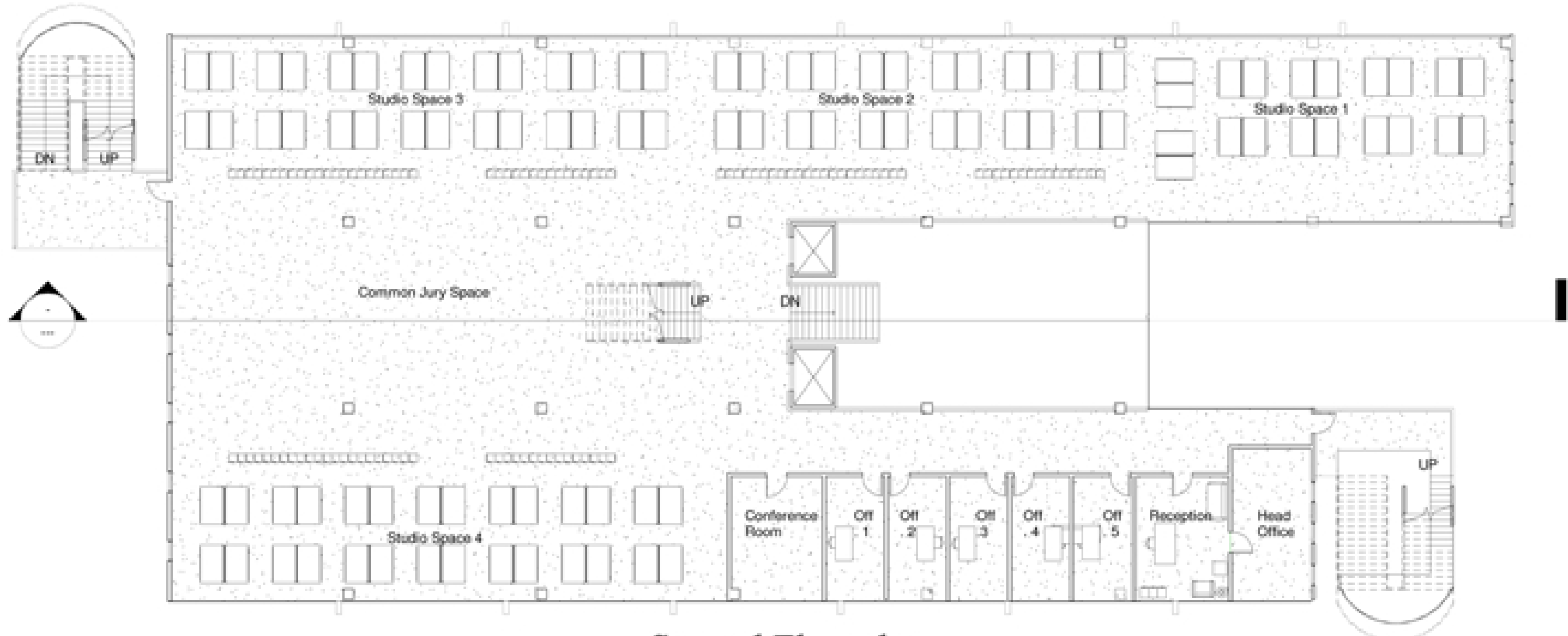
Fourah Bay College School of Architecture

Glenn Washington Arch 501 Spring 2010 Prof. Jack Ames

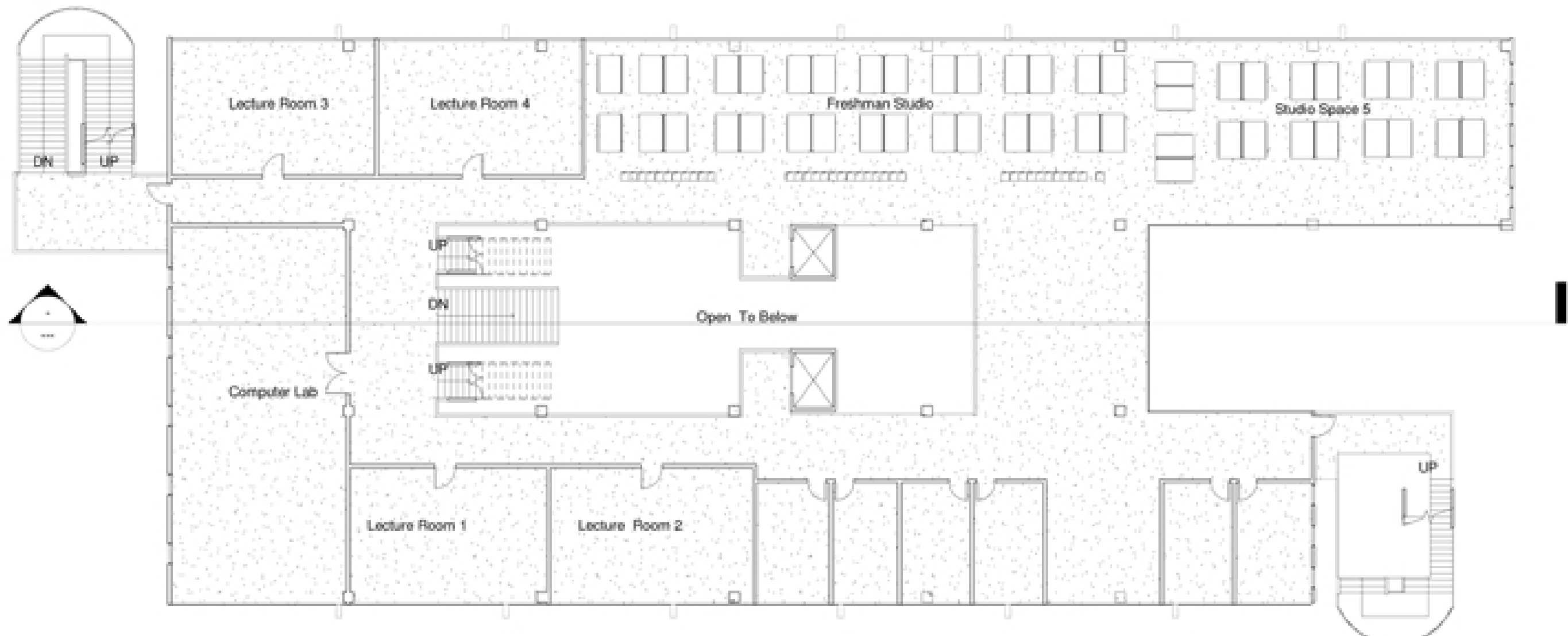
The Fourah Bay School of Architecture was designed with the theories of David Adjaye in mind. The architecture school was designed using the concept of informal meeting spaces as the key element driving the design. The buildings design is focused around a central atrium, which all the program spaces surround. The atrium, which functions as circulation, is an area in the building that serves as a meeting space for those traveling between the buildings four levels. Large open spaces were also instrumental in reaching the goal of the design. These type of spaces lend themselves better to collaboration between studios and created a balance between studio and jury space.



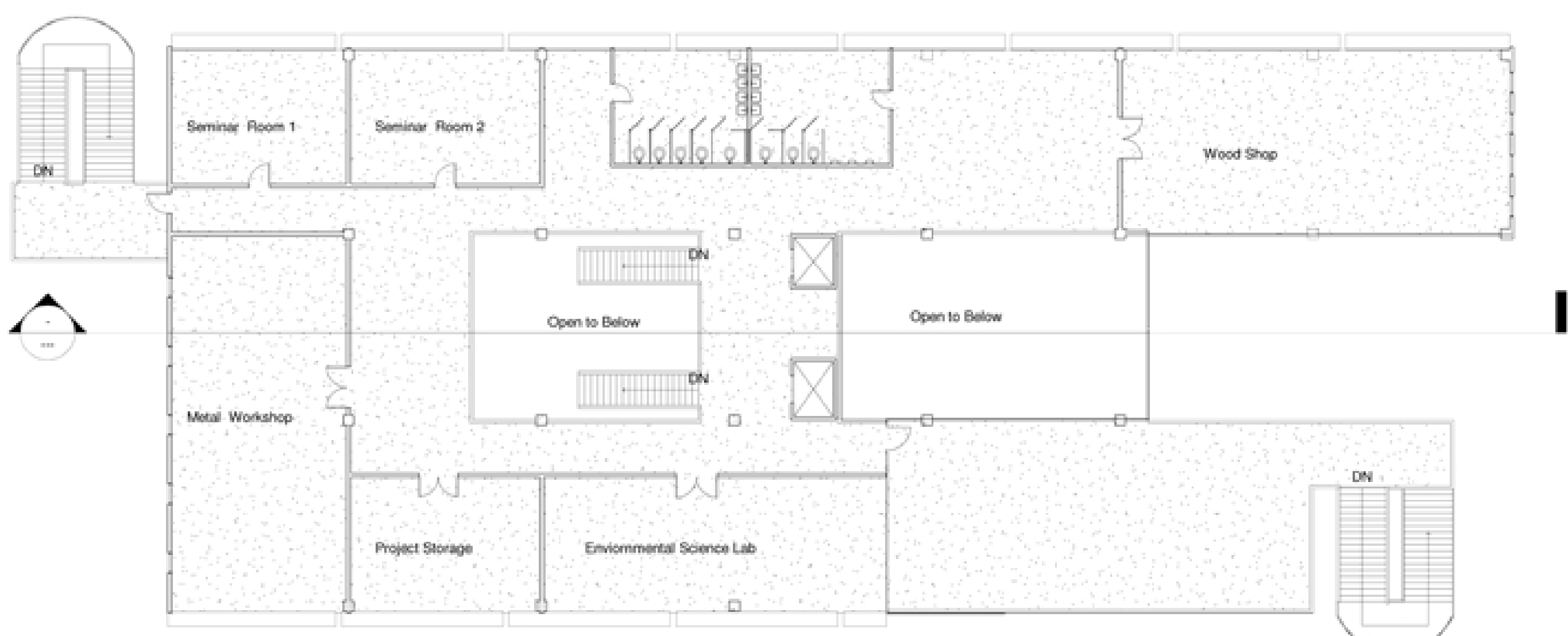
First Floorplan
Scale:1/16"=1'



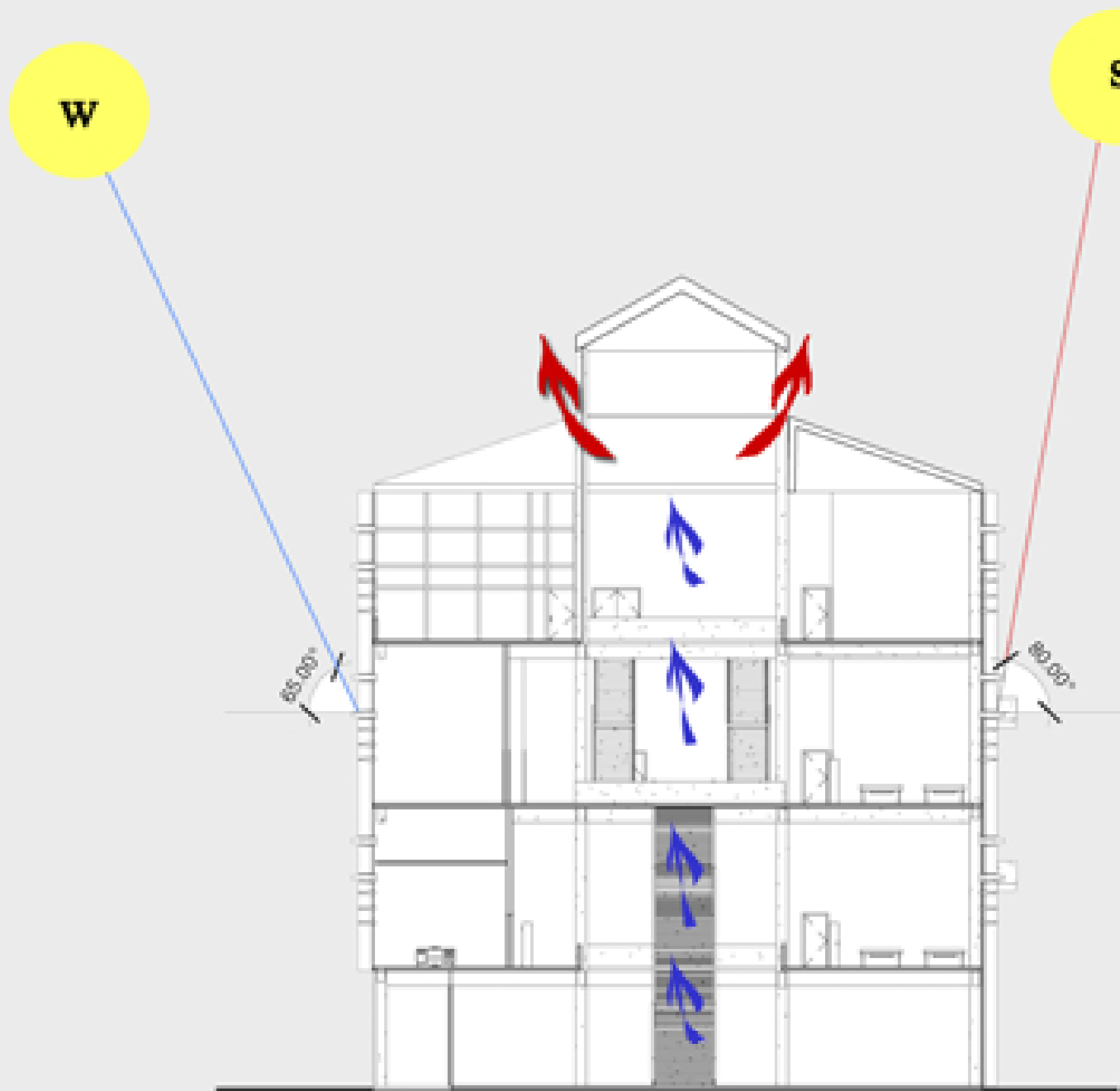
Second Floorplan
Scale:1/16"=1'



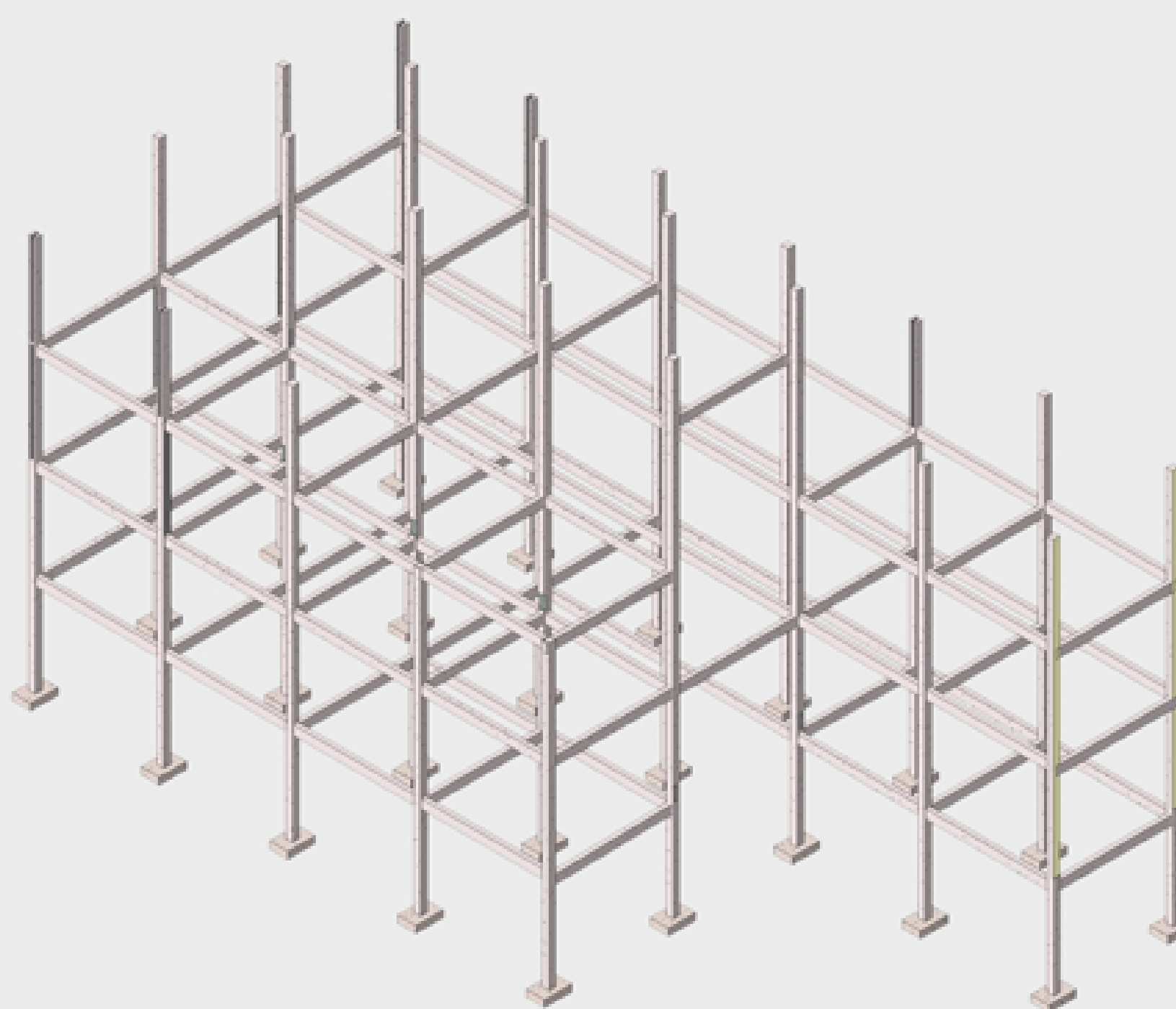
Third Floorplan
Scale:1/16"=1'



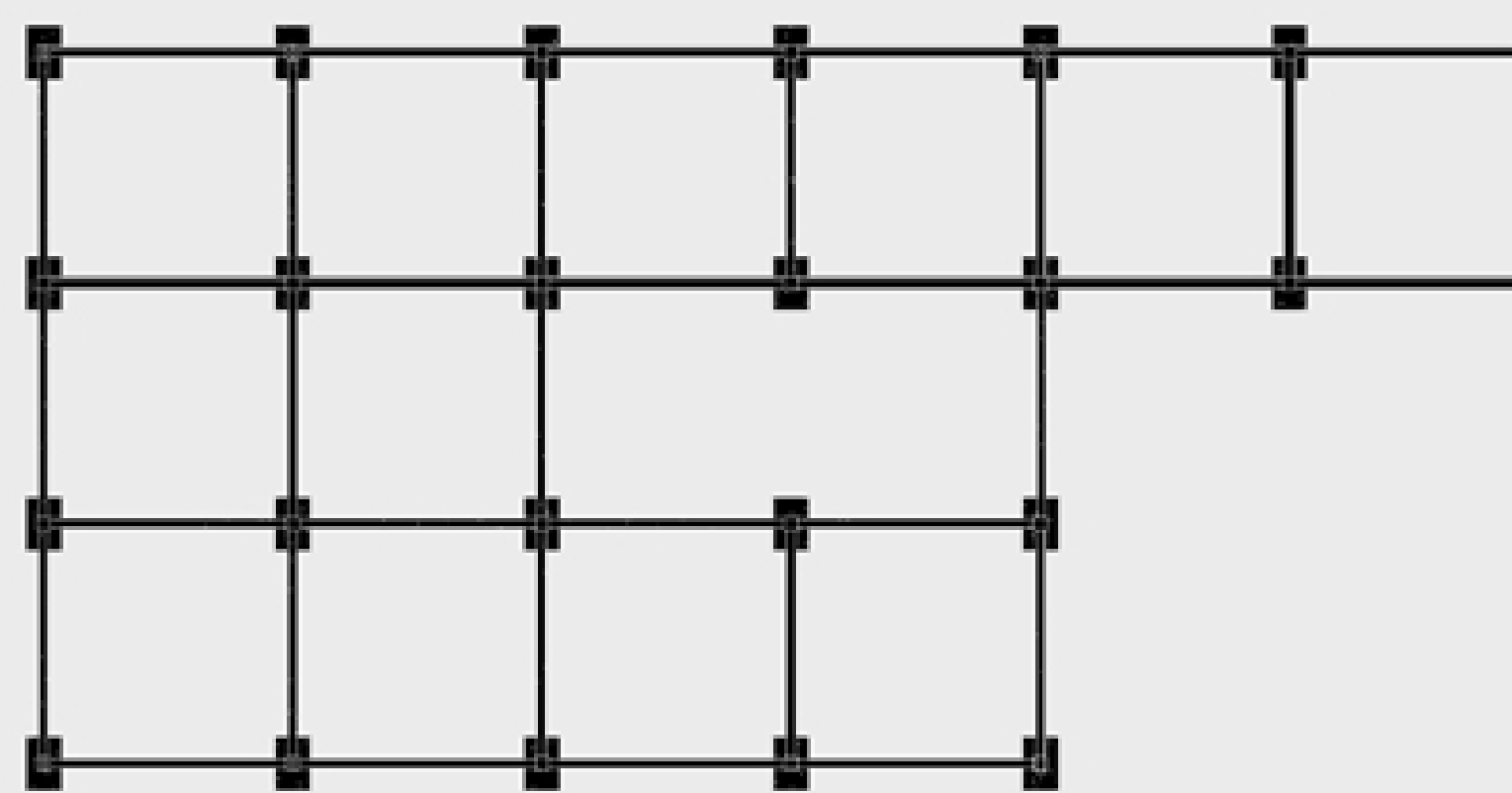
Fourth Floorplan
Scale:1/16"=1'



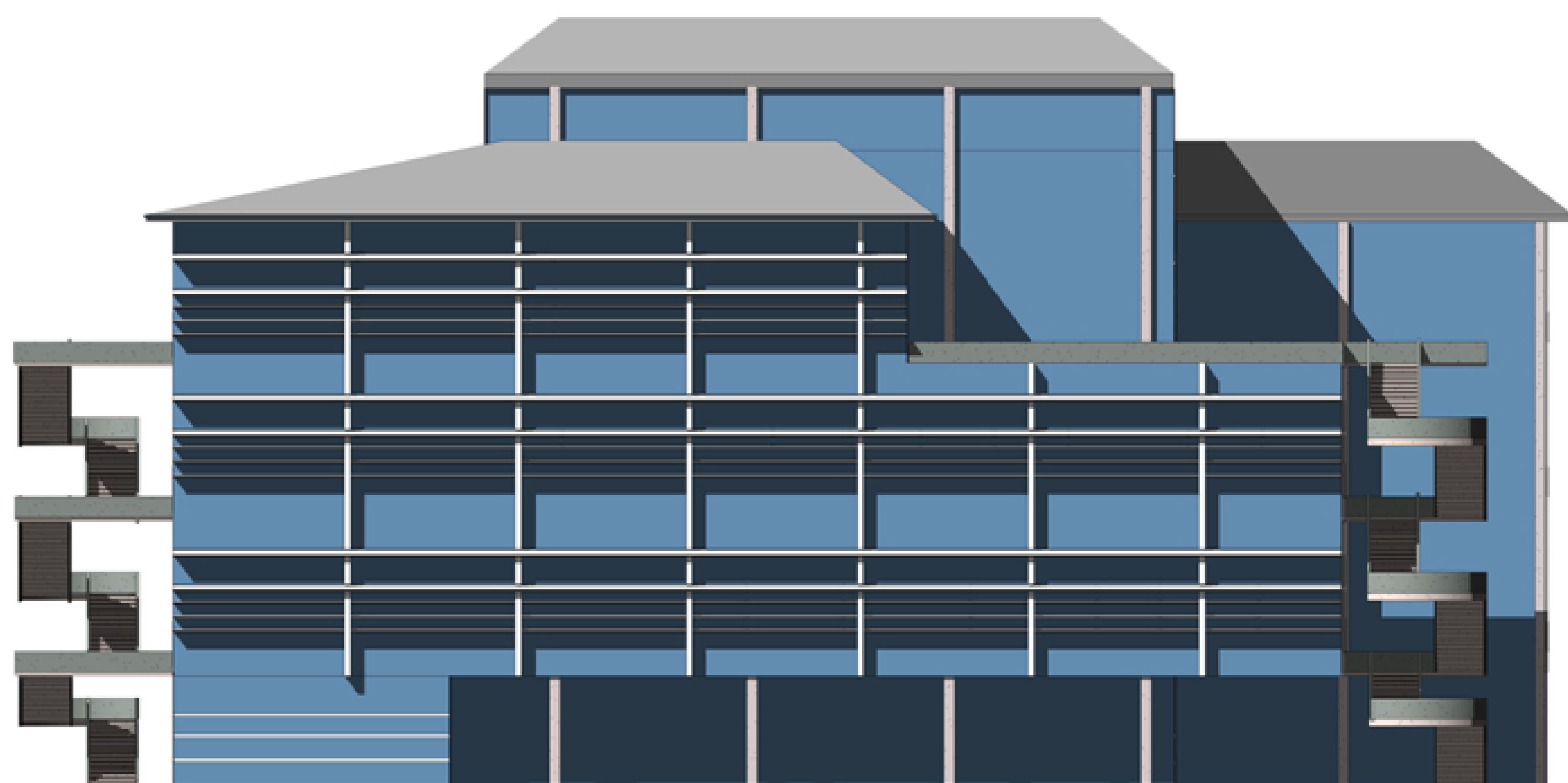
Environmental Diagram
Scale:3/64"=1'



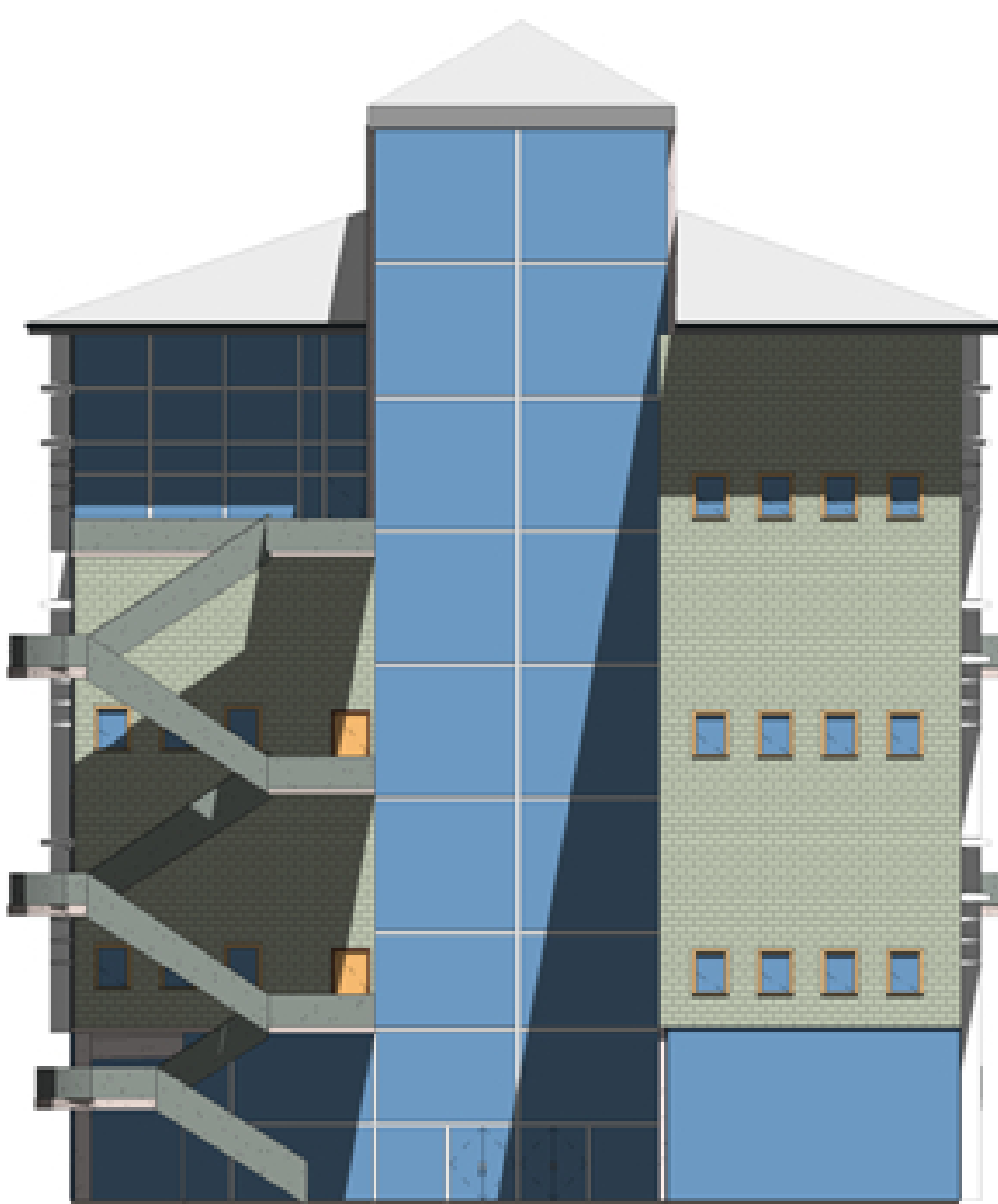
3D Structural Diagram
Scale: 3/64"=1'



Structural Framing Plan
Scale: 3/64"=1'



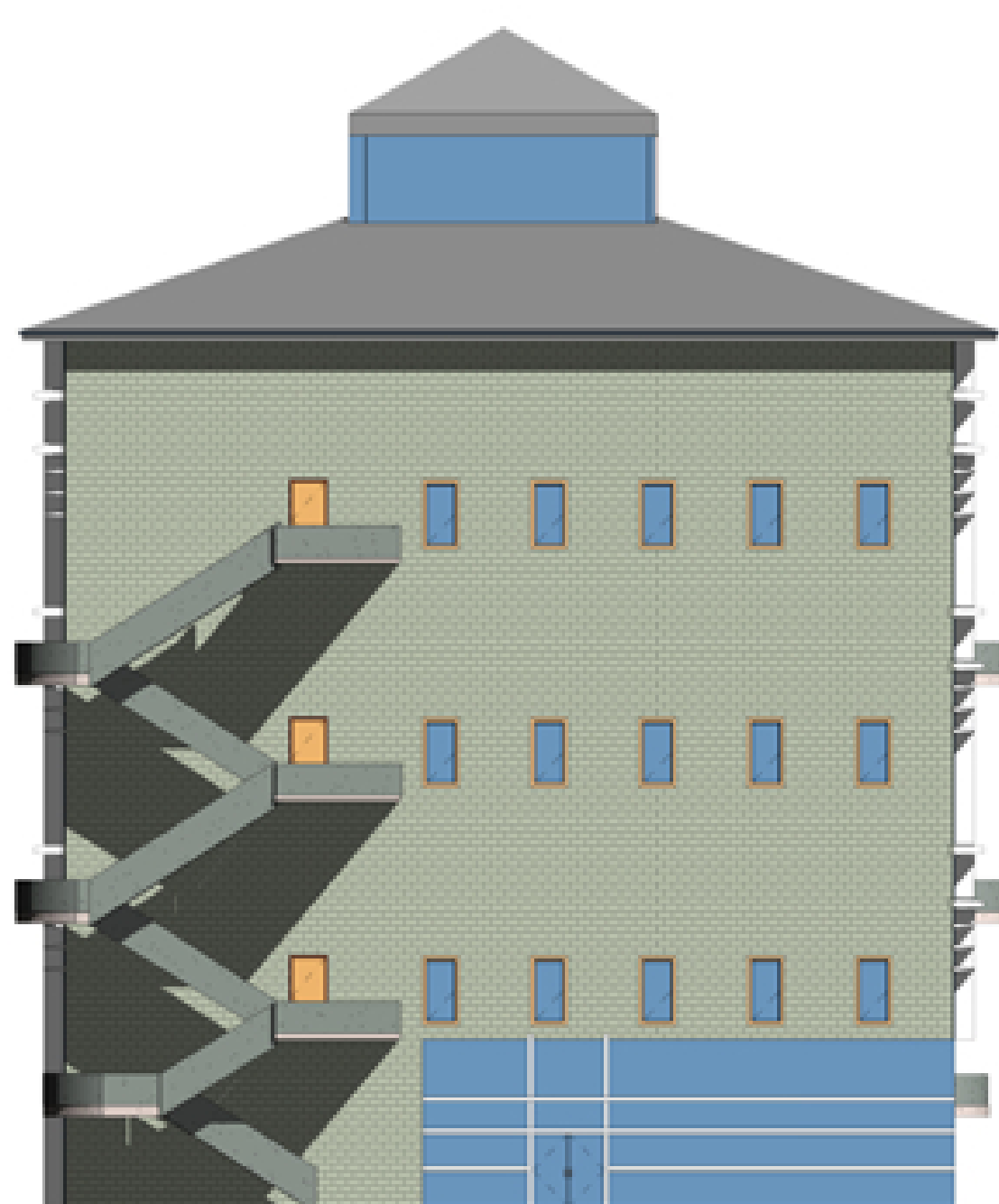
South Elevation
Scale: 1/16"=1'



East Elevation
Scale: 1/16"=1'



North Elevation
Scale: 1/16"=1'



West Elevation
Scale: 1/16"=1'