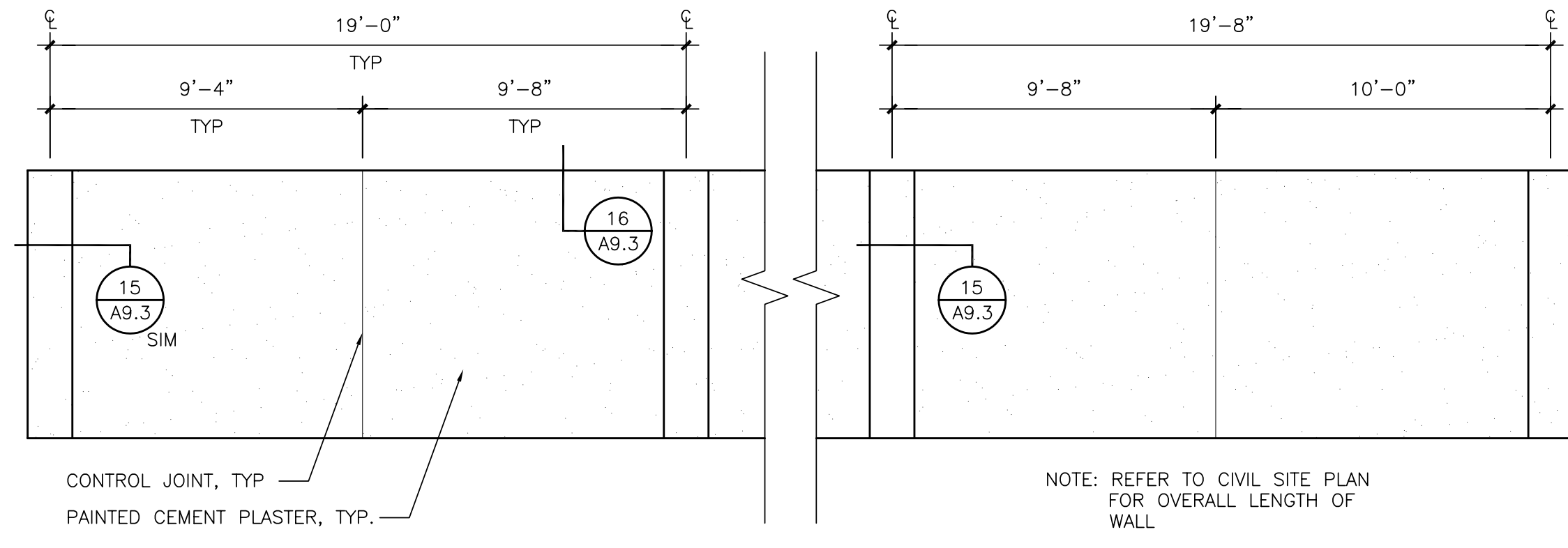
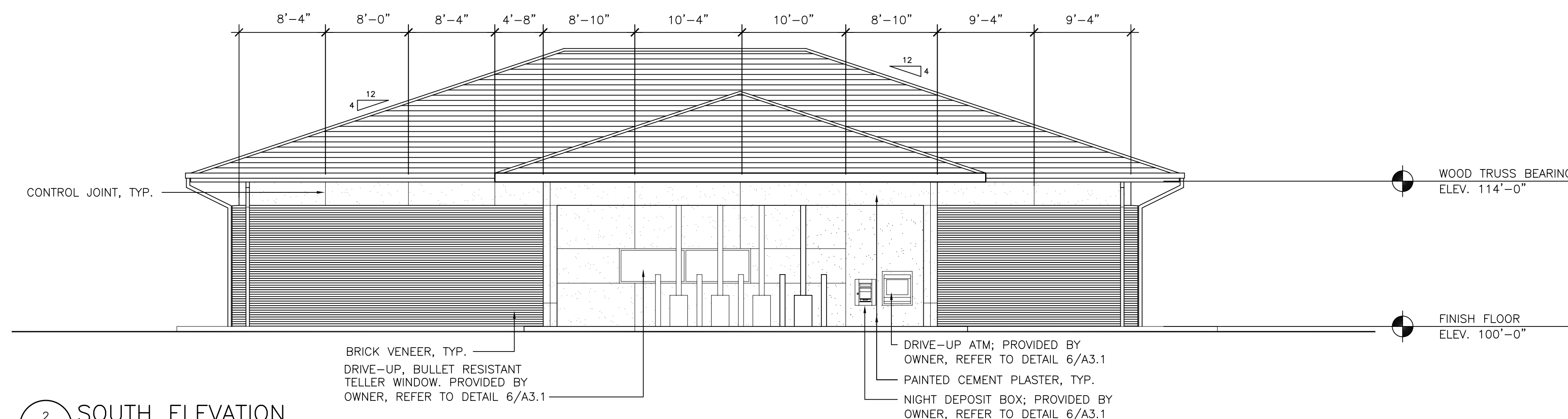


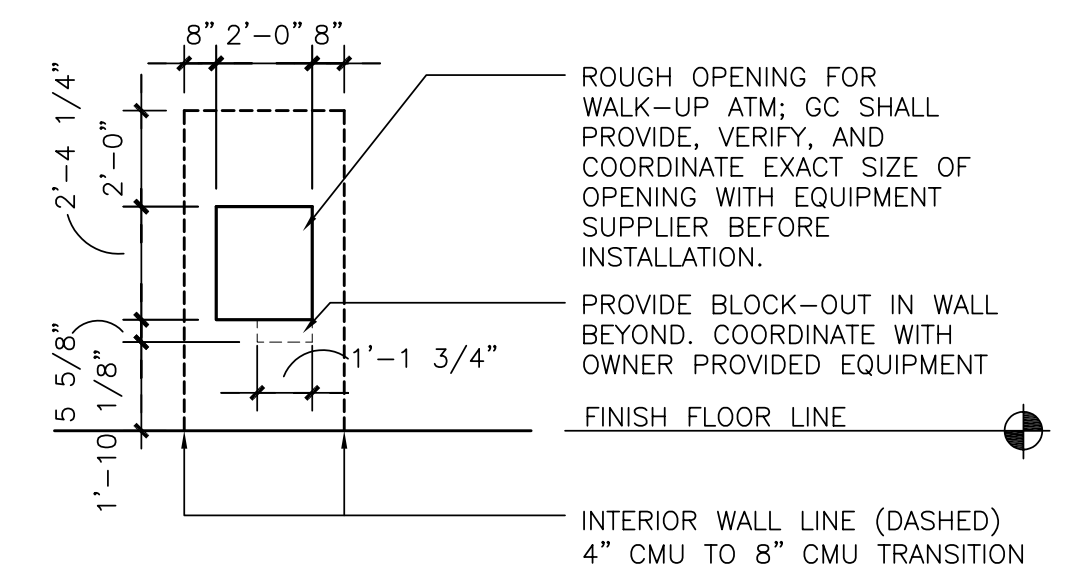
1 EAST ELEVATION  
A3.1 SCALE: 1/8" = 1'-0"



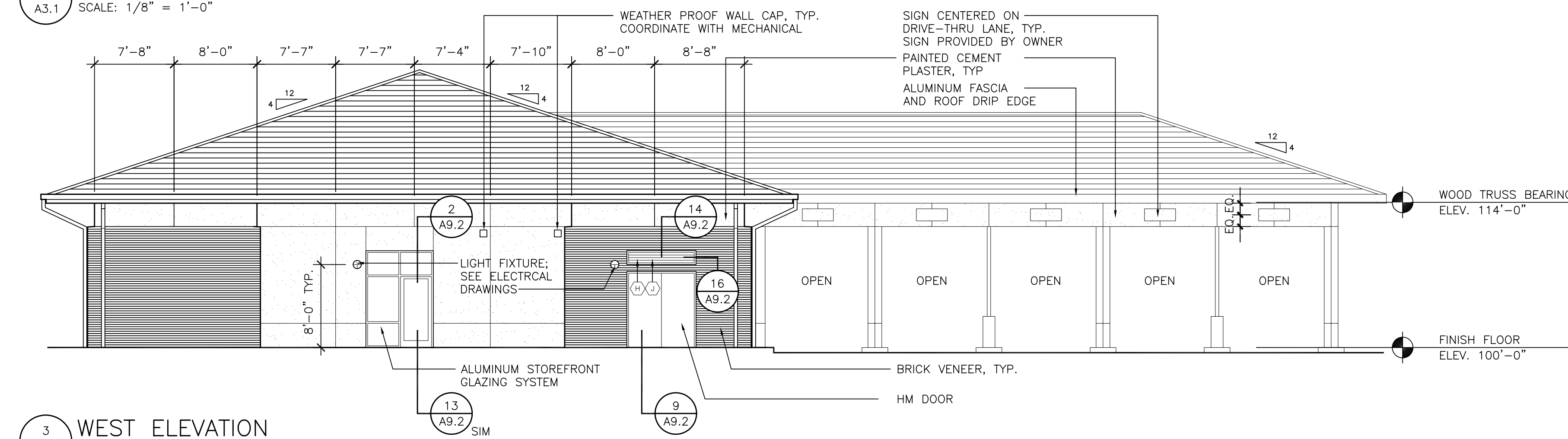
5 CONCRETE WALL SOUTH ELEVATION (ELEVATION FACES SSFCU BUILDING)  
A3.1 SCALE: 1/4" = 1'-0"



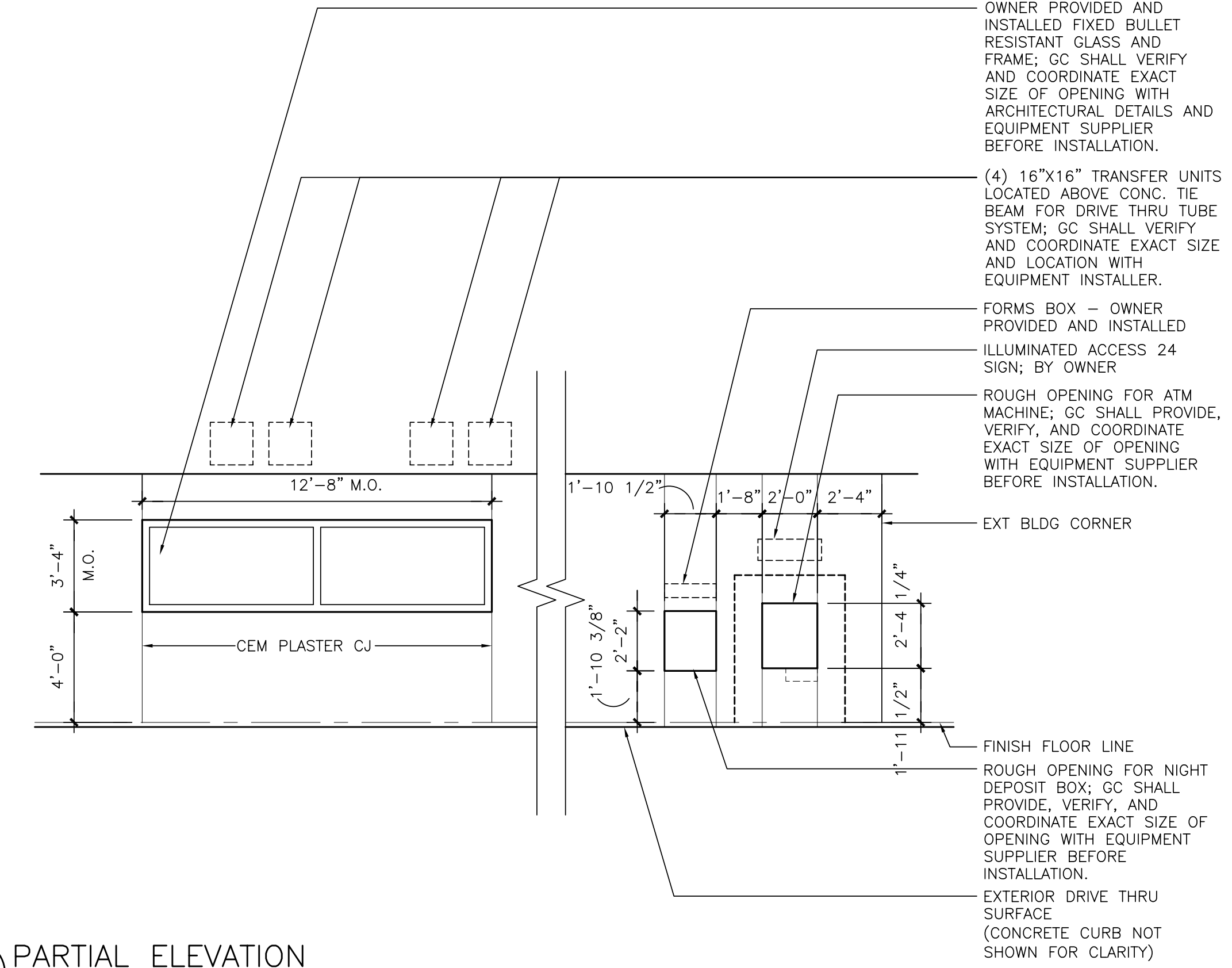
2 SOUTH ELEVATION  
A3.1 SCALE: 1/8" = 1'-0"



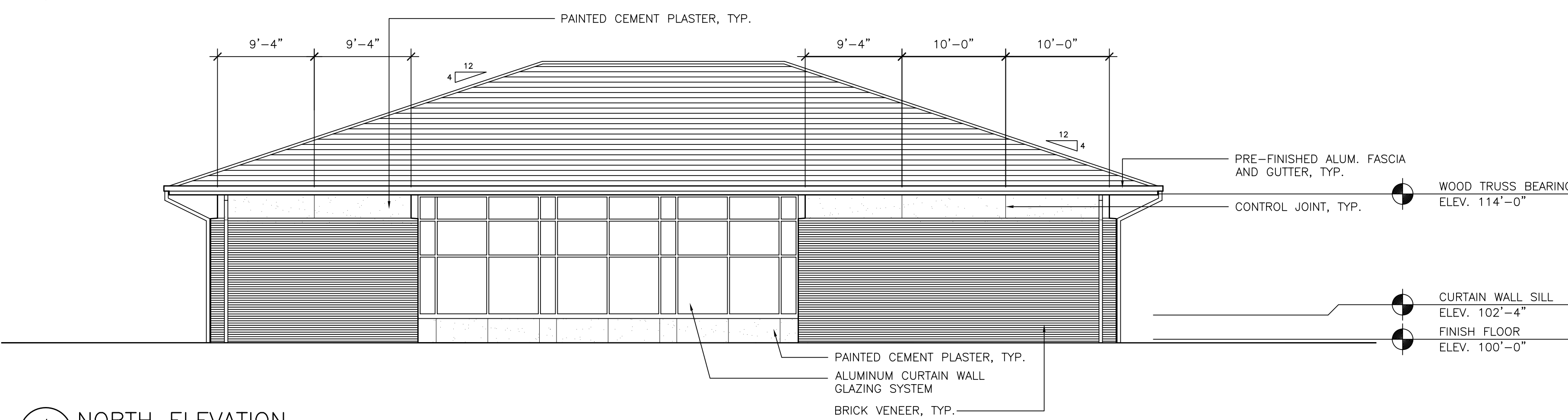
7 WALK-UP ATM ELEVATION  
A3.1 SCALE: 1/4" = 1'-0"



3 WEST ELEVATION  
A3.1 SCALE: 1/8" = 1'-0"



6 PARTIAL ELEVATION  
A3.1 SCALE: 1/4" = 1'-0"  
VIEW AT DRIVE UP WINDOW / ATM WALL



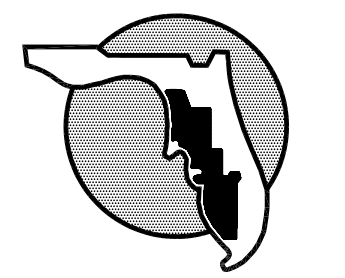
4 NORTH ELEVATION  
A3.1 SCALE: 1/8" = 1'-0"

ARCHITECT  
HOLMES HEPPNER & ASSOCIATES ARCHITECTS  
109 NORTH BRUSH STREET, SUITE 100  
TAMPA, FLORIDA 33602  
813-229-0814  
REG. NO. AA 0002617

CIVIL ENGINEER AND LANDSCAPE  
TOM CONSULTING, INC.  
8695 COLLEGE PARKWAY, SUITE 106  
FORT MYERS, FLORIDA 33919  
239-433-4231  
REG. NO. P03000072719

STRUCTURAL ENGINEER  
CATALANO ENGINEERING, INC.  
120 SOUTH EDSON AVE.  
TAMPA, FLORIDA 33606  
813-264-1285  
REG. NO. 6828

MECHANICAL, ELECTRICAL, & PLUMBING ENGINEER  
ANSTON-GREENLEES, INC.  
1315 WEST FLETCHER AVE.  
TAMPA, FLORIDA 33612  
813-963-1919  
REG. NO. 6993



**SUNCOAST  
SCHOOLS  
FEDERAL  
CREDIT UNION**

CAPE CORAL  
MEMBER SERVICE CENTER

PROJECT NO. 2856  
DISTRIBUTION DATE  
CONSTRUCTION DOCUMENTS 07/11/2007

EXTERIOR  
ELEVATIONS

A3.1