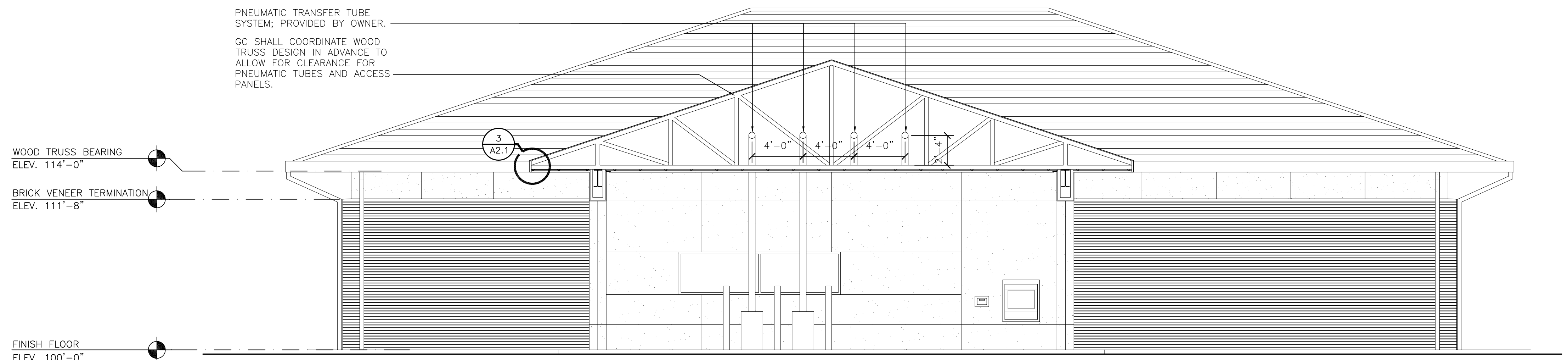
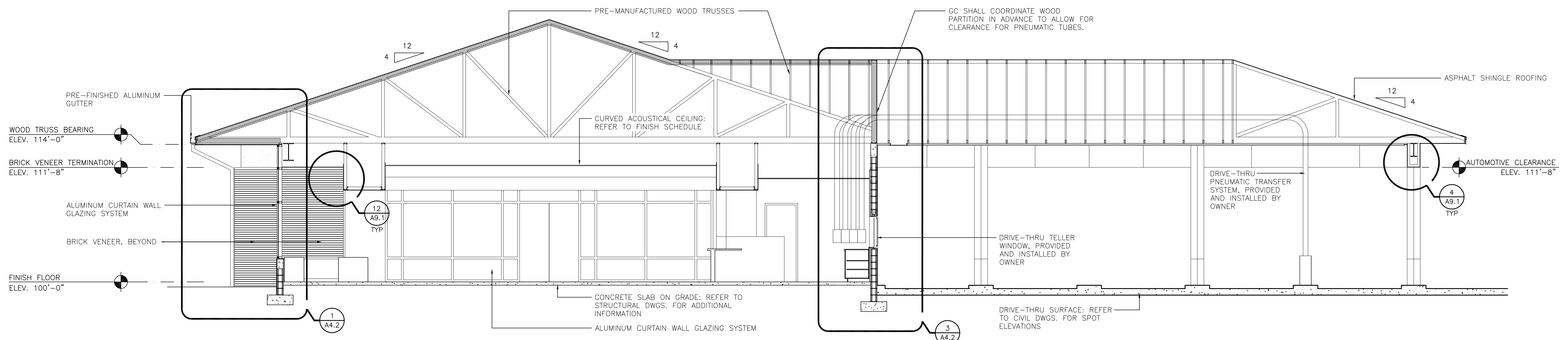


1 BUILDING SECTION  
A4.1 SCALE: 3/16" = 1'-0"



2 BUILDING SECTION  
A4.1 SCALE: 3/16" = 1'-0"



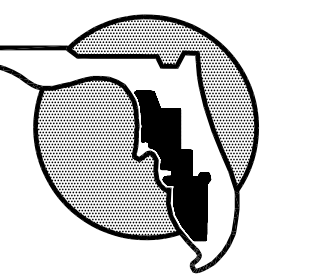
3 BUILDING SECTION  
A4.1 SCALE: 3/16" = 1'-0"

ARCHITECT  
HOLMES HEPPNER & ASSOCIATES ARCHITECTS  
109 NORTH BRUSH STREET, SUITE 100  
TAMPA, FLORIDA 33602  
813-229-0614  
REG. NO. AA 0002617

CIVIL ENGINEER AND LANDSCAPE  
TDM CONSULTING, INC.  
8695 COLLEGE PARKWAY, SUITE 106  
FORT MEYERS, FLORIDA 33919  
239-433-4231  
REG. NO. P0300072719

STRUCTURAL ENGINEER  
CATALANO ENGINEERING, INC.  
120 SOUTH EDISON AVE.  
TAMPA, FLORIDA 33606  
813-254-1265  
REG. NO. 6828

MECHANICAL, ELECTRICAL & PLUMBING ENGINEER  
ANISTON-GREENLEES, INC.  
1315 WEST FLETCHER AVE.  
TAMPA, FLORIDA 33612  
813-863-1919  
REG. NO. 6093



SUNCOAST  
SCHOOLS  
FEDERAL  
CREDIT UNION

CAPE CORAL  
MEMBER SERVICE CENTER

PROJECT NO.	2856
DISTRIBUTION DATE	
CONSTRUCTION DOCUMENTS	07/11/2007

BUILDING  
SECTIONS

A4.1