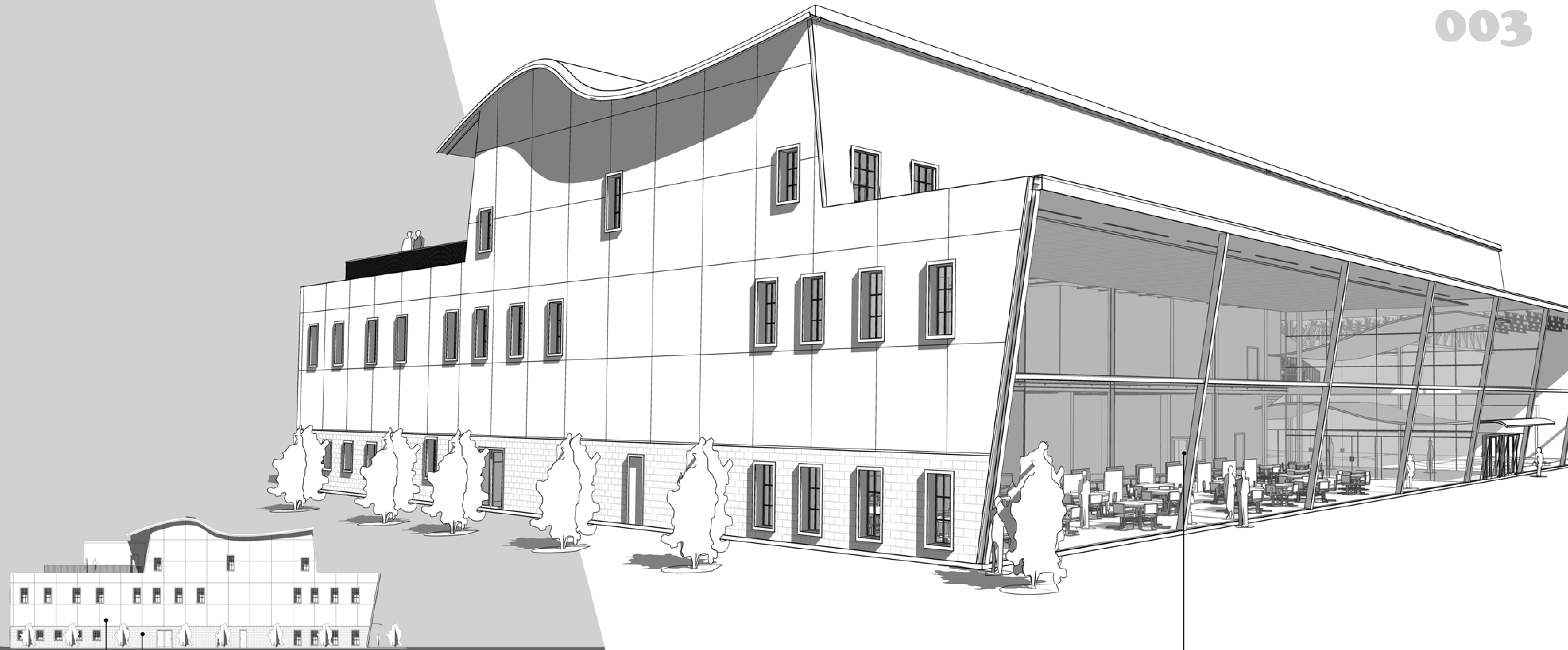


Building

Enclosure



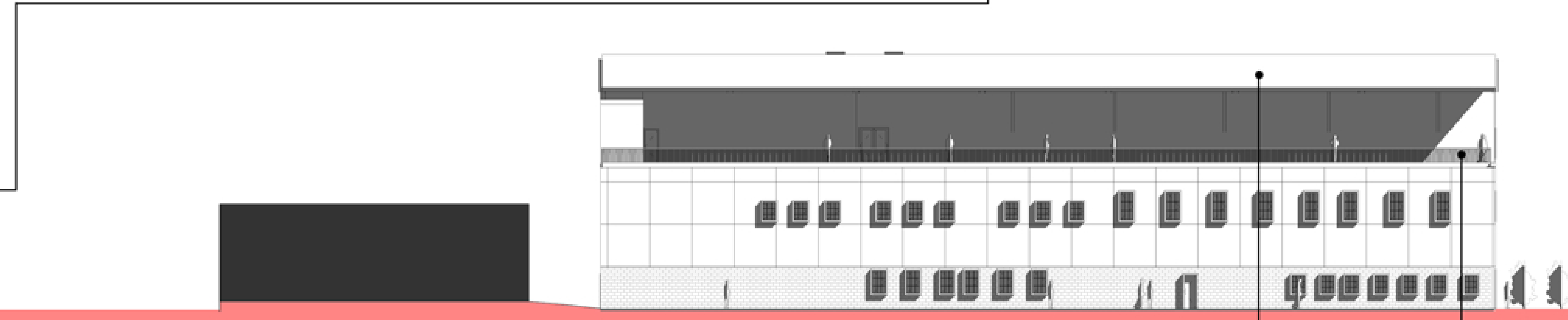
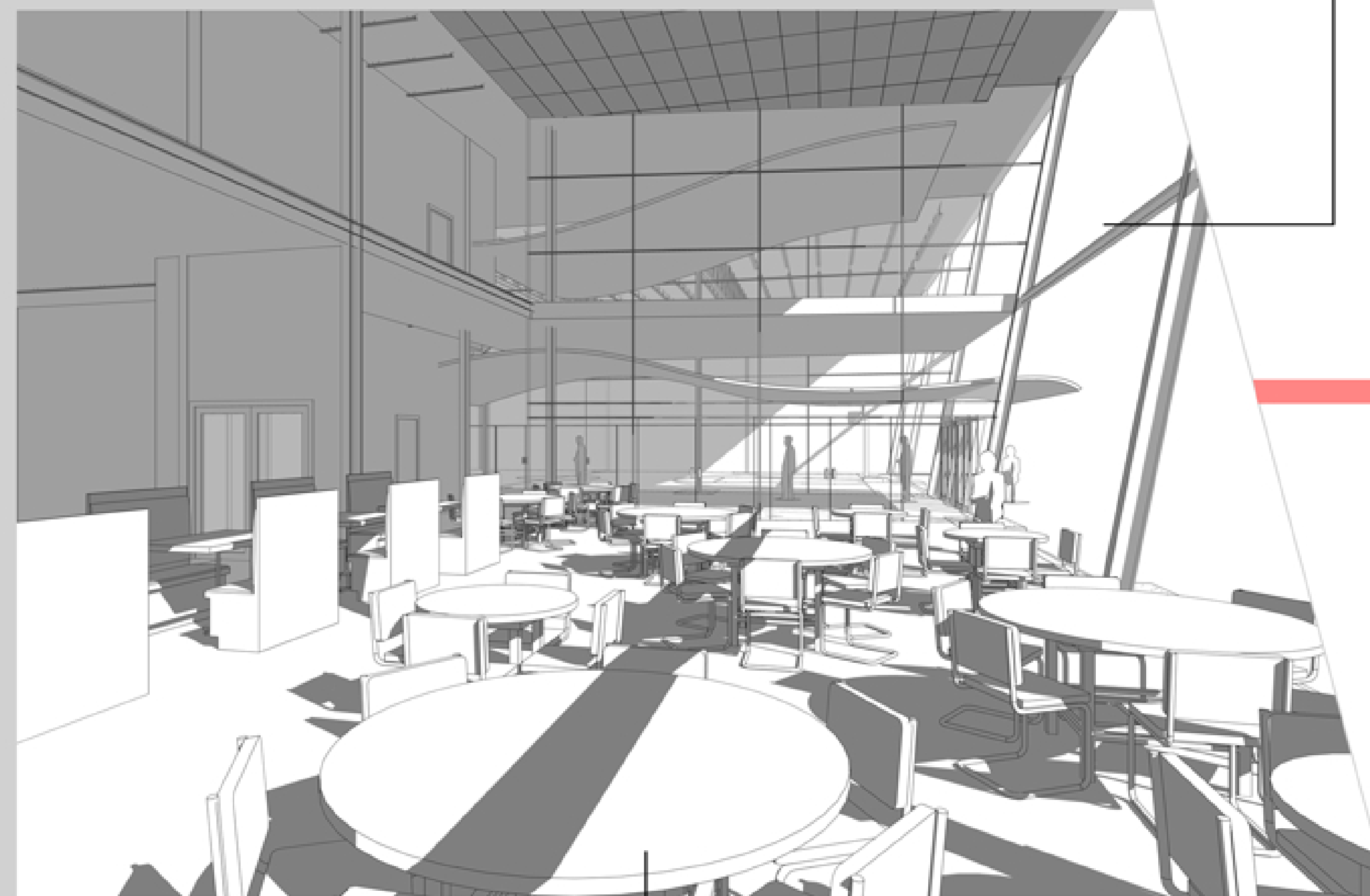
East Elevation
Scale: 1/16"=1'



The building's primary exterior wall finish is comprised of a travertine cladding system. The travertine panels measure 8'x8'. This specific stone is a sand-blasted panel quarried from the springs in Italy.



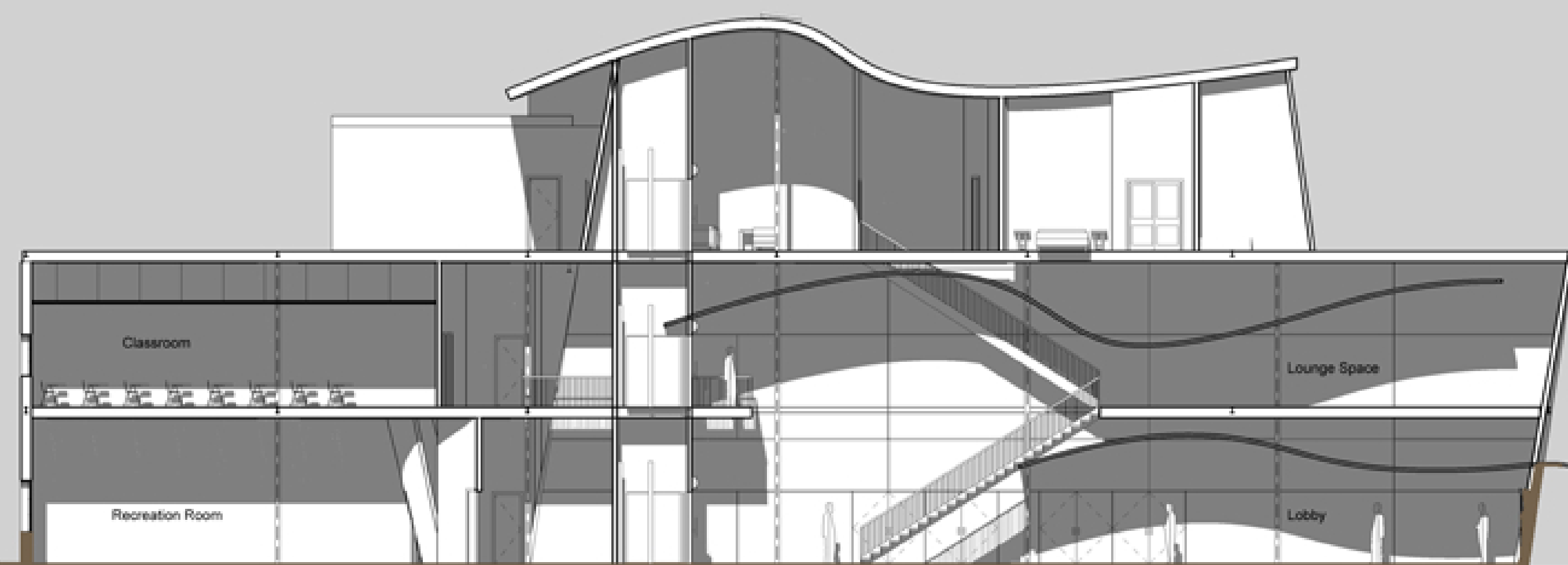
The secondary exterior wall finish consists of a masonry running wall sweep. It is a masonry ashlar sweep that extends eight feet above the floor's base. The pattern used is a broken-coursed pattern.



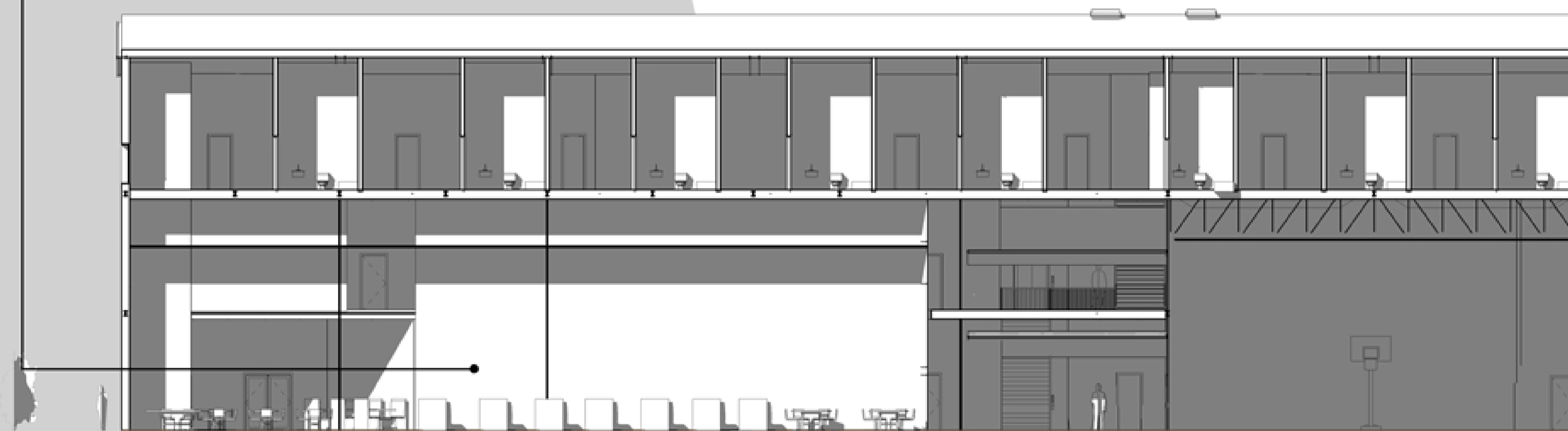
South Elevation
Scale: 1/16"=1'

Anodized aluminum standing seam roofing system. Metal roof panels span a distance of ten feet. Roofing spans the entire distance of the residential third-story third story.

Inhabitable roof space used for residential recreation. Space is only accessible from the residential level.



Section A-A
Scale: 3/32"=1'



Section B-B
Scale: 3/32"=1'