

“Really strong project.” Aaron Betsky



Proposal:

The whole arsenale becomes the proposed installation, broken up into 4 stages.

Concept:

We are submerged in and distracted by media culture. Despite our best intentions, our eyes flick back and forth between the tv behind the bar and our dinner comapnions' faces. We find ourselves at a live entertainment event watching the action on the 'jumbotron'. We are nearly completely removed from reality and its experience. It seems that we have become collectively enslaved by The Screen and are only able to particiapte in the role of Viewer.



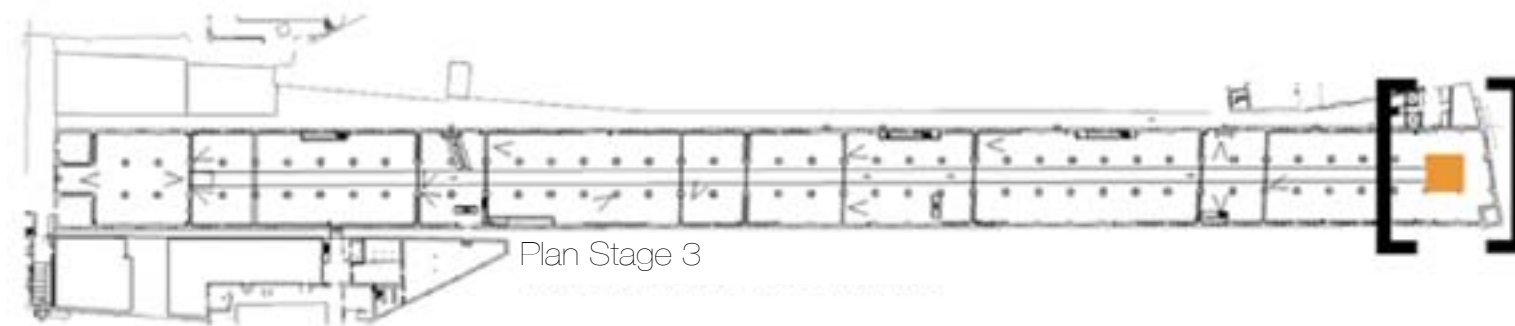
Stage 1:

The hall is lined with a scrim, onto which each exhibit is projected. One would hear and smell activity behind the scrim, but not have direct access to it. Aaron Betsky commented that this was especially appropriate and likely to provoke people, as the last Biennale was dominated by video projections.



Stage 2:

At the end of the hall, the 'final' exhibit is projected onto a wall of monofilament - physically permeable to those who choose to see it as such. Those not inclined might turn around and leave the building without ever seeing what's behind the curtain - thinking that the projections were the whole of the exhibit.



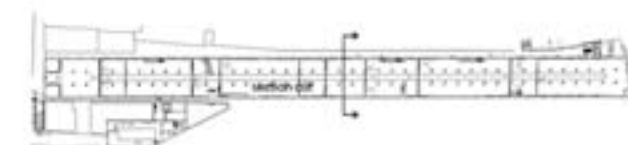
Stage 3:

Beyond the curtain, lies the most beautifully lit, murano glass box full of water from the canals of Venice. Displayed at eye level in an open container, the unfiltered, unadulterated canal water (its effluvium and detrius) is fully engageable through site, smell, and touch. It stands as a tangible synthesis of the myriad forces of Venice - representing its past, present, and future simultaneously and simply.



Stage 4:

The outer edges of the arsenal contain the other live installations, but from this side of the scrim one can see through the screen and view the crowds viewing the projections - the process of viewing becomes part of the exhibit. One can enjoy one's cup of canal water coffee from Diller Scofidio + Renfro's installation and have a full sensory experience of the installations as well as one's own part in the larger exhibit.



Section diagram of the arsenal:

The center hallway of the arsenal is lined completely with screening material and the other physical installations occur in the flanking spaces.