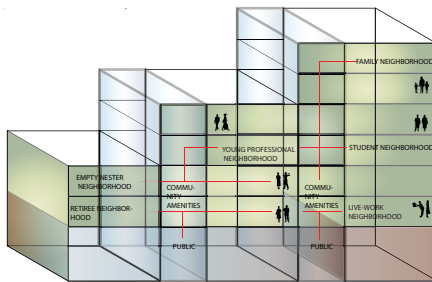
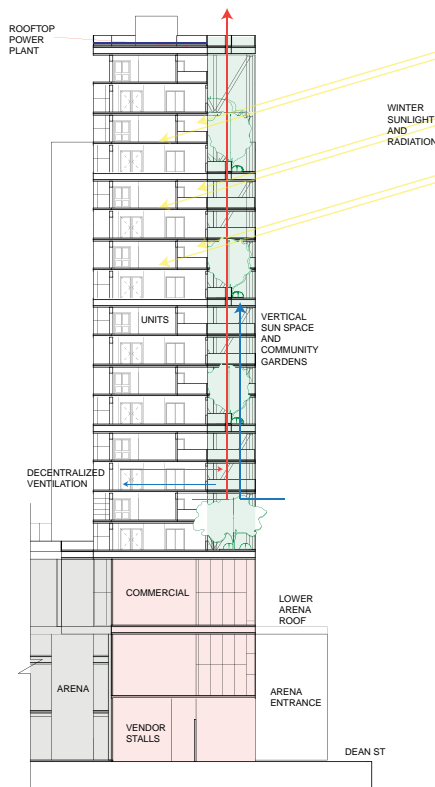


BROOKLYN, NY
Vertical Option II Studio
James Garrison
Spring 2011

A mixed use development in Brooklyn, NY. The mixed use structure consists of modular, prefabricated units and an inventive structural system. Environmental systems were integrated to reduce energy use and provide a comfortable living environment. Sky Society uses social and environmental starting points to create a new paradigm of mass housing; one that takes the horizontal sprawl of society and extrudes it upward to create a vibrant community that accommodates all abilities, ages, and living needs.



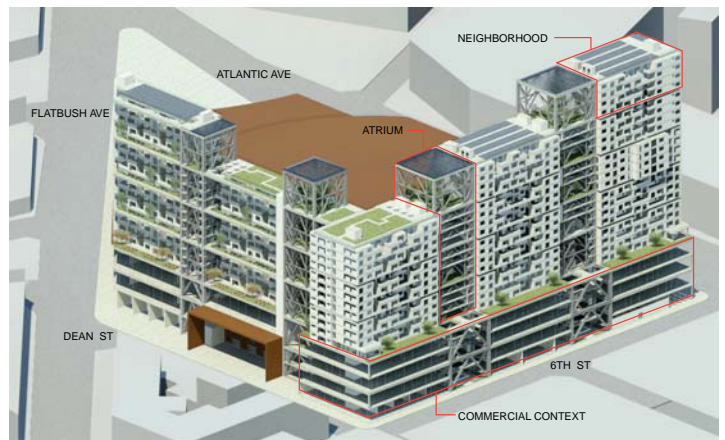
social diagram



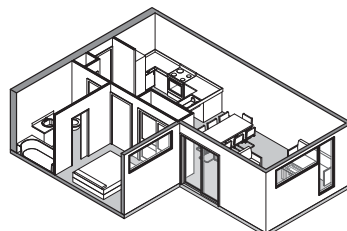
environmental diagram - cross section

SMART GROWTH AND
SOCIAL /
ENVIRONMENTAL
PURPOSE:

- ACHIEVE A UNIQUE SENSE OF COMMUNITY AND PLACE
- EXTEND THE RANGE OF HOUSING CHOICES, EMPLOYMENT, AND TRANSPORTATION
- EQUITABLY DISTRIBUTE THE COSTS AND BENEFITS OF DEVELOPMENT
- PRESERVE AND ENHANCE NATURAL AND CULTURAL RESOURCES
- PROMOTE PUBLIC HEALTH



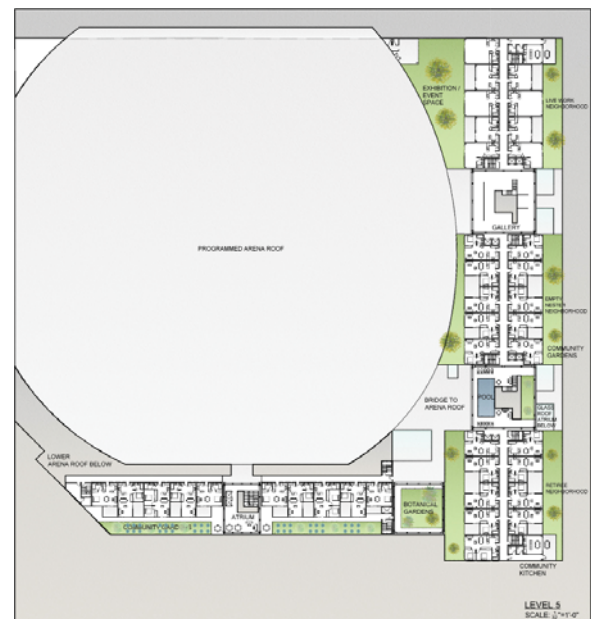
aerial view - southeast corner



one bedroom apartment



atrium section



level 5 floor plan