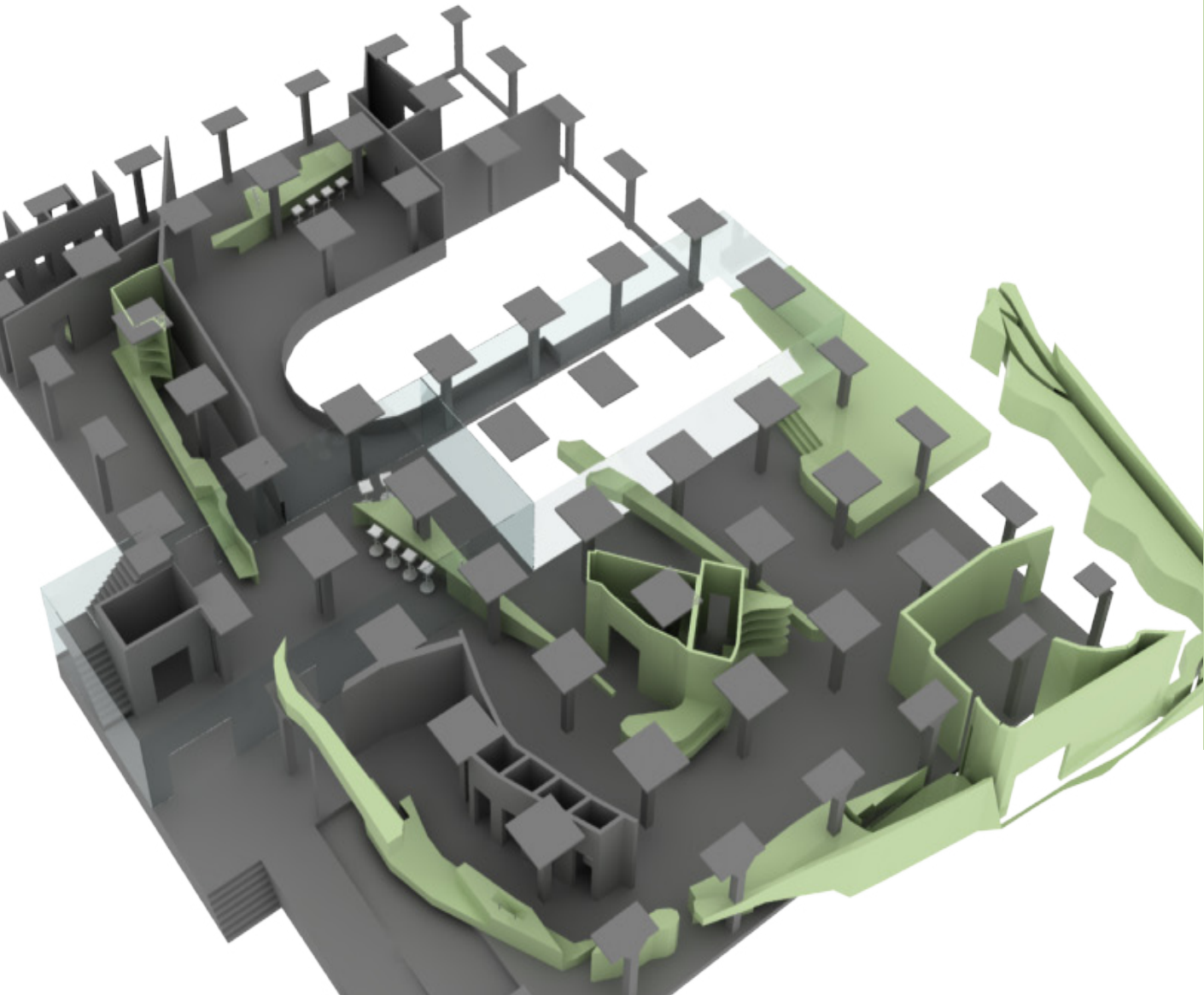


a Dichotomy

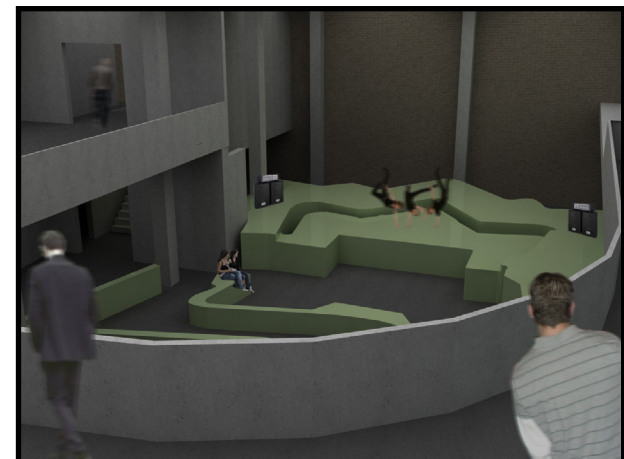
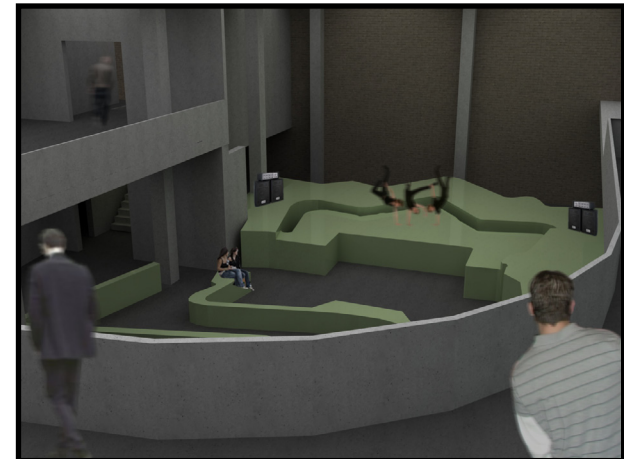
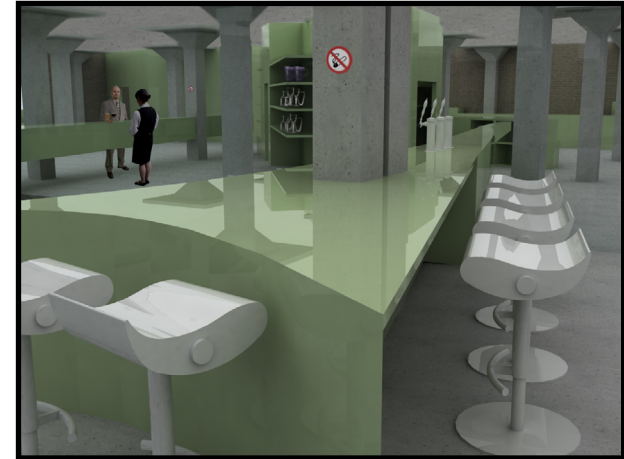


An **expansion joint** IS CONSTANTLY PRESENT IN THE BUILDING, MOSTLY NOT TANGIBLE OR IN GREAT SHAPES.

IT WILL HAVE BIG **dimensions** SO IT CAN BE USED AS A CENTRAL PLACE FROM WHICH THE **various functions** WILL SPROUT. THIS PLACE IS CHARACTERIZED BY A LARGE CENTRAL ATRIUM AND REPRESENTS THE **scar**. IT **separates** THE WAREHOUSE **into two major parts**, THE CASTOR AND POLLUX SECTION.

'It seems that the Warehouse was once sawn into two pieces and is now attached back together. It looks like a scar or dichotomy that can never be healed again.'

Functional elements NEEDED FOR THE WAREHOUSE TO WORK ARE FULLY, PARTLY OR NOT AT ALL ATTACHED TO THIS PLACE. THE **forms** OF THESE ELEMENTS ARE **originated from topographic maps** OF BRUGES, WHERE THEY HAVE THE PRIMARILY FUNCTION AS **parks**. THE COLOR AND SHAPE OF THESE PARKS REMAIN THE SAME, BUT I ADDED SPATIALITY AND FUNCTIONALITY.



The concept of the warehouse is based on the twins 'Castor & Pollux' from Greek and Roman mythology and collectively known as the Dioskouroi.

