

WORK

SAMPLES
2015 - 2018

GABRIEL FISCHLER
UNIVERSITY OF MIAMI



1.1 DESIGN

SUNSET PARK INTERMODAL TRANSIT CENTER SPRING 2018 MIAMI, USA

The theme that drives the ideas elaborated on in our design is that of transportation, parks and circulation meeting at a single point, our building.

In collaboration with FIU's landscape architecture students, we have developed a building at the top corner of a site which is slated to be part of a much larger linear park.

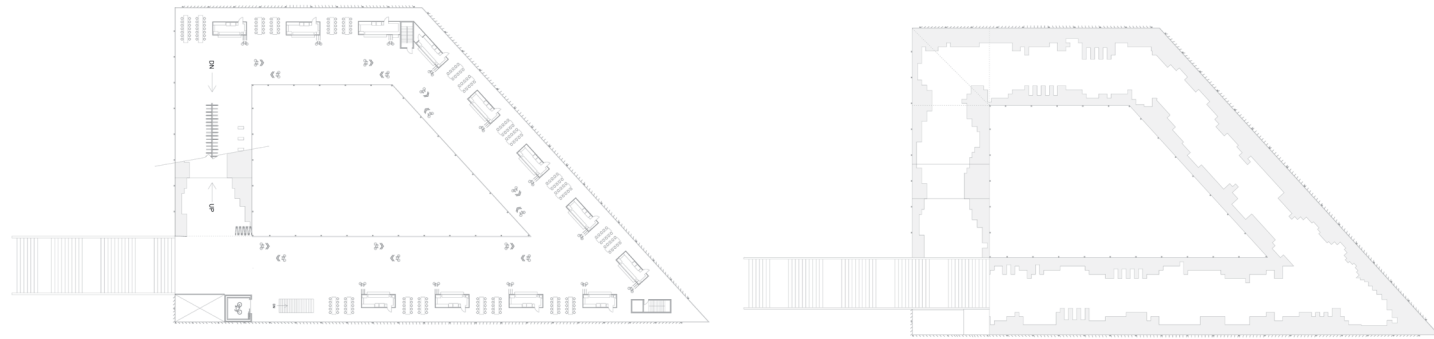
By keeping the programmatic aspects of the ground level to a minimum, we encourage the circulation of the pedestrian and the bike-rider through the building and site. The majority of the program lies on the second floor, which is almost completely shaded by wooden louvers. Additional program is situated on the roof, where you can find additional bicycle and walking paths, as well as plantable roof gardens and beautiful viewing points.

Bicycle use is highly stressed in our design. The dynamic 'ramped' arm allows for easy pedestrian and bicycle access to both the market floor and roof. Additionally, the building features large bicycle elevators, multiple bike paths, bicycle repair stations and a bicycle retail center.



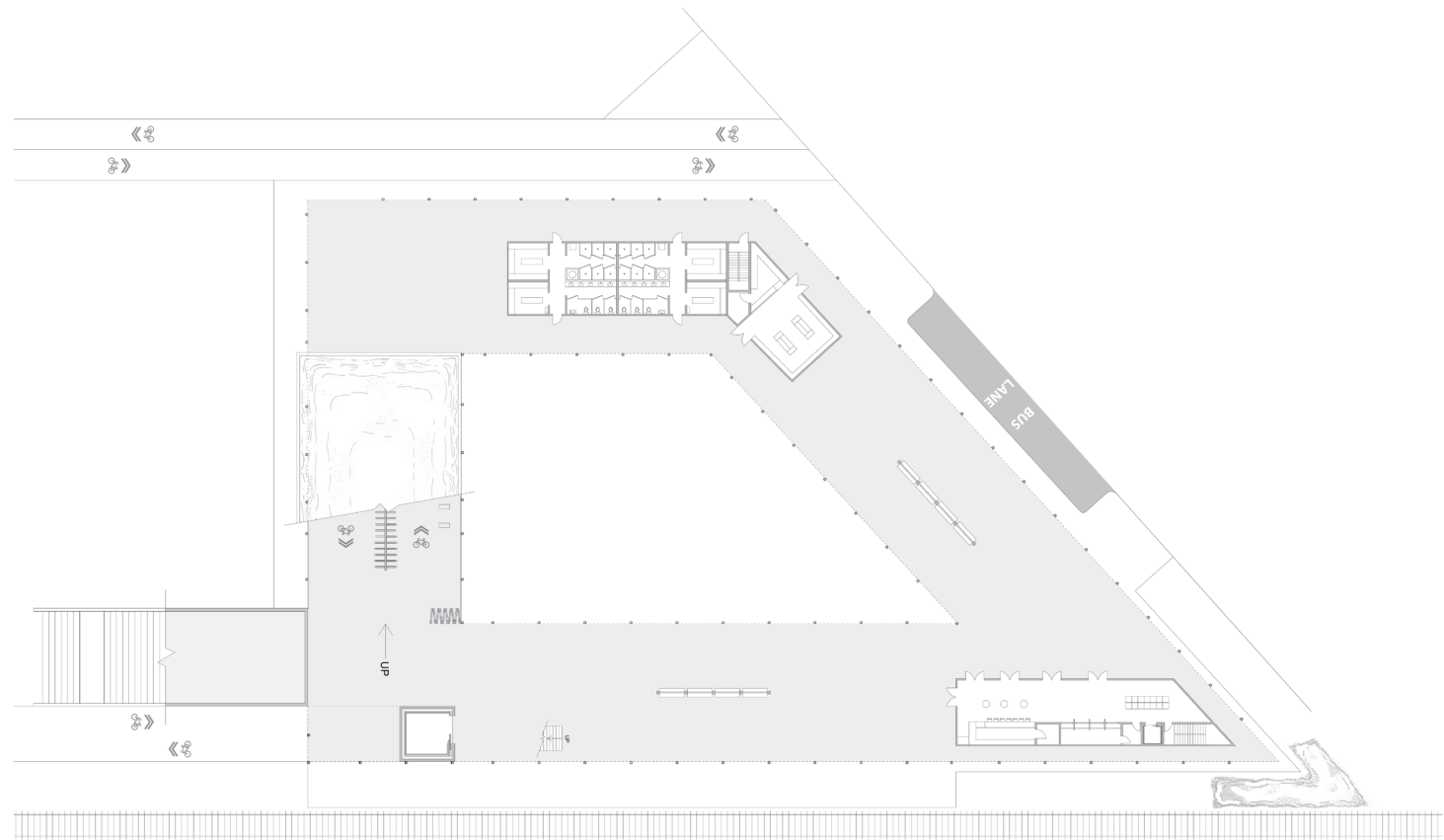


SECTION PERSPECTIVE

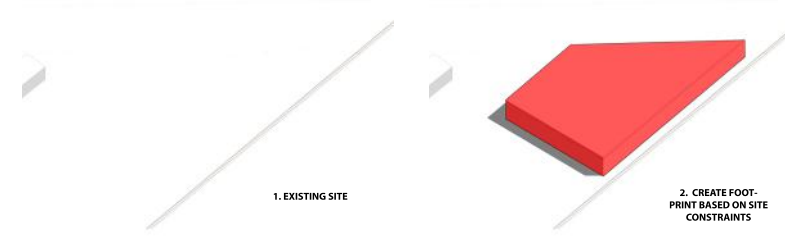


MARKET FLOOR PLAN

ROOF PLAN

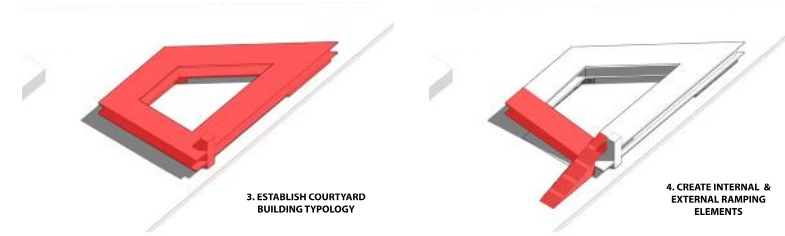


GROUND FLOOR PLAN



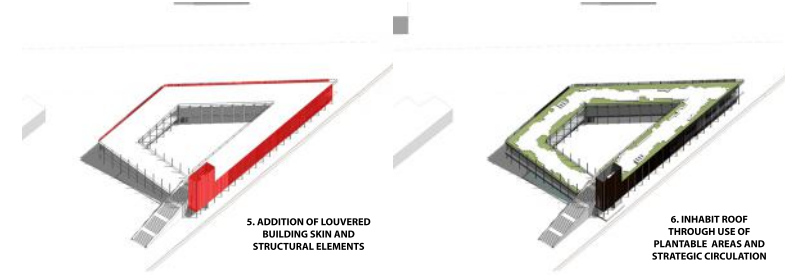
1. EXISTING SITE

2. CREATE FOOT-PRINT BASED ON SITE CONSTRAINTS



3. ESTABLISH COURTYARD BUILDING TYPOLOGY

4. CREATE INTERNAL & EXTERNAL RAMPING ELEMENTS



5. ADDITION OF LOUVERED BUILDING SKIN AND STRUCTURAL ELEMENTS

6. INHABIT ROOF THROUGH USE OF PLANTABLE AREAS AND STRATEGIC CIRCULATION



MARKET RENDERING



STREET RENDERING



ROOF RENDERING



1.2

SoHo LOFT TOWER
SPRING 2018
MANHATTAN, NEW YORK, USA

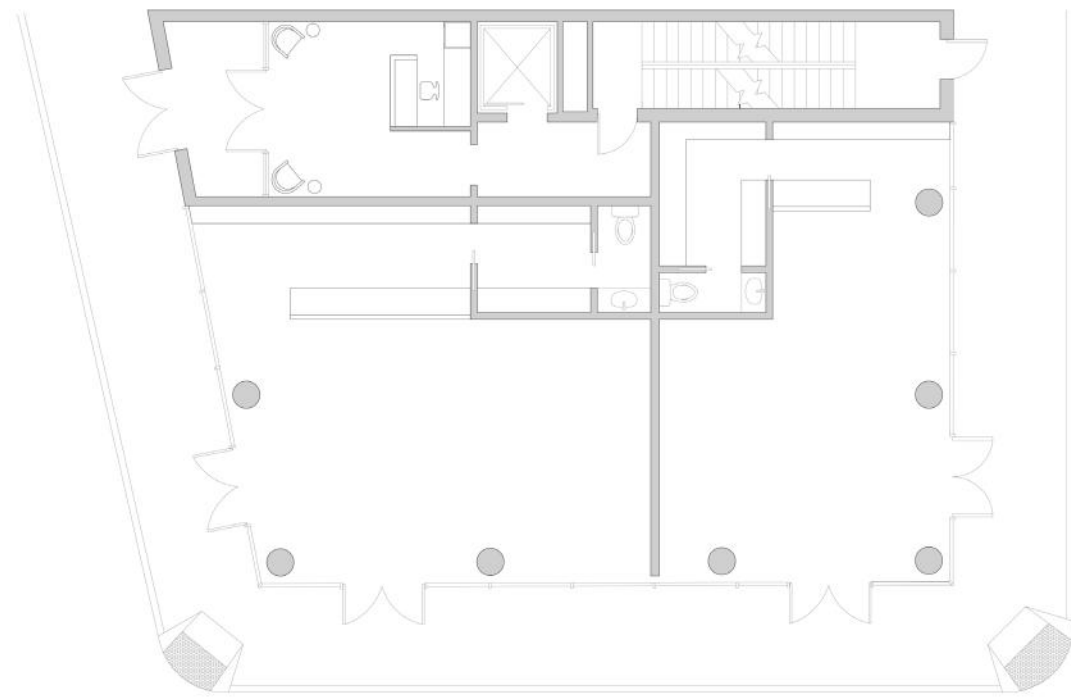
This project, located at 26 Watts st. can be seen as a modern take on the typical SoHo 'loft-style' building.

Our goal during this seven week exercise was to incorporate modern materials and building practices with the architectural typologies already in place in this historical district of New York City.

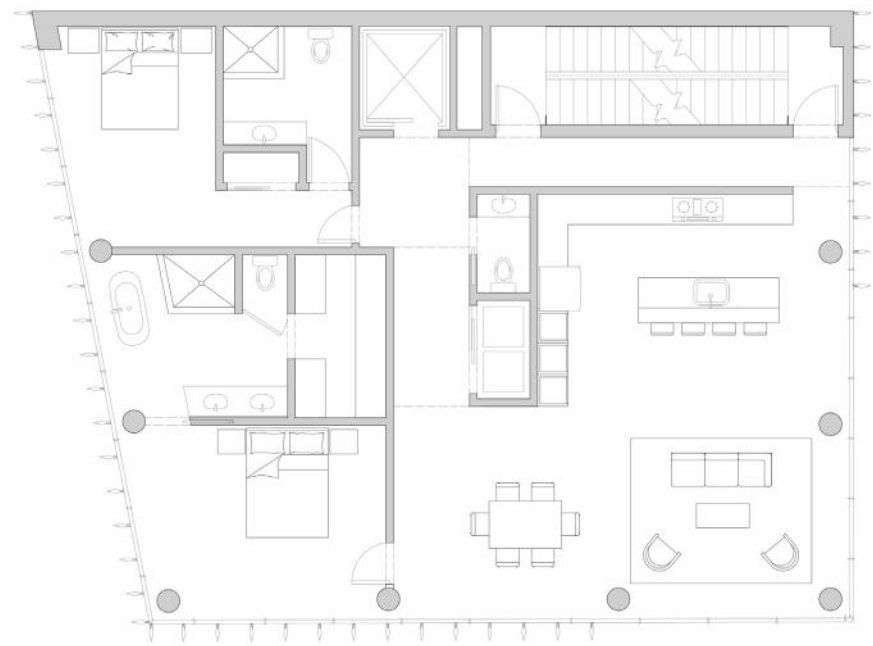
By using light materials such as glass and aluminum in a vertical manor to face the building, we introduce not only newer building styles, but also important architectural elements that helps our building to appear correct in the context in which it lies.

While we provide a typical residential loft floor plan, every loft is completely adaptable to the needs of its occupants, allowing the building to function in an almost identical manor to that of the popular 'loft-style' building.





GROUND FLOOR PLAN



TYPICAL LOFT PLAN



LOBBY RENDERING



LIVING AREA RENDERING



MASTER BATH RENDERING

1.3

COCONUT GROVE MICRO HOUSING
FALL 2015
COCONUT GROVE, MIAMI, USA

The goal of this project was to incorporate the new idea of Micro-Housing into the developing neighborhood of Coconut Grove.

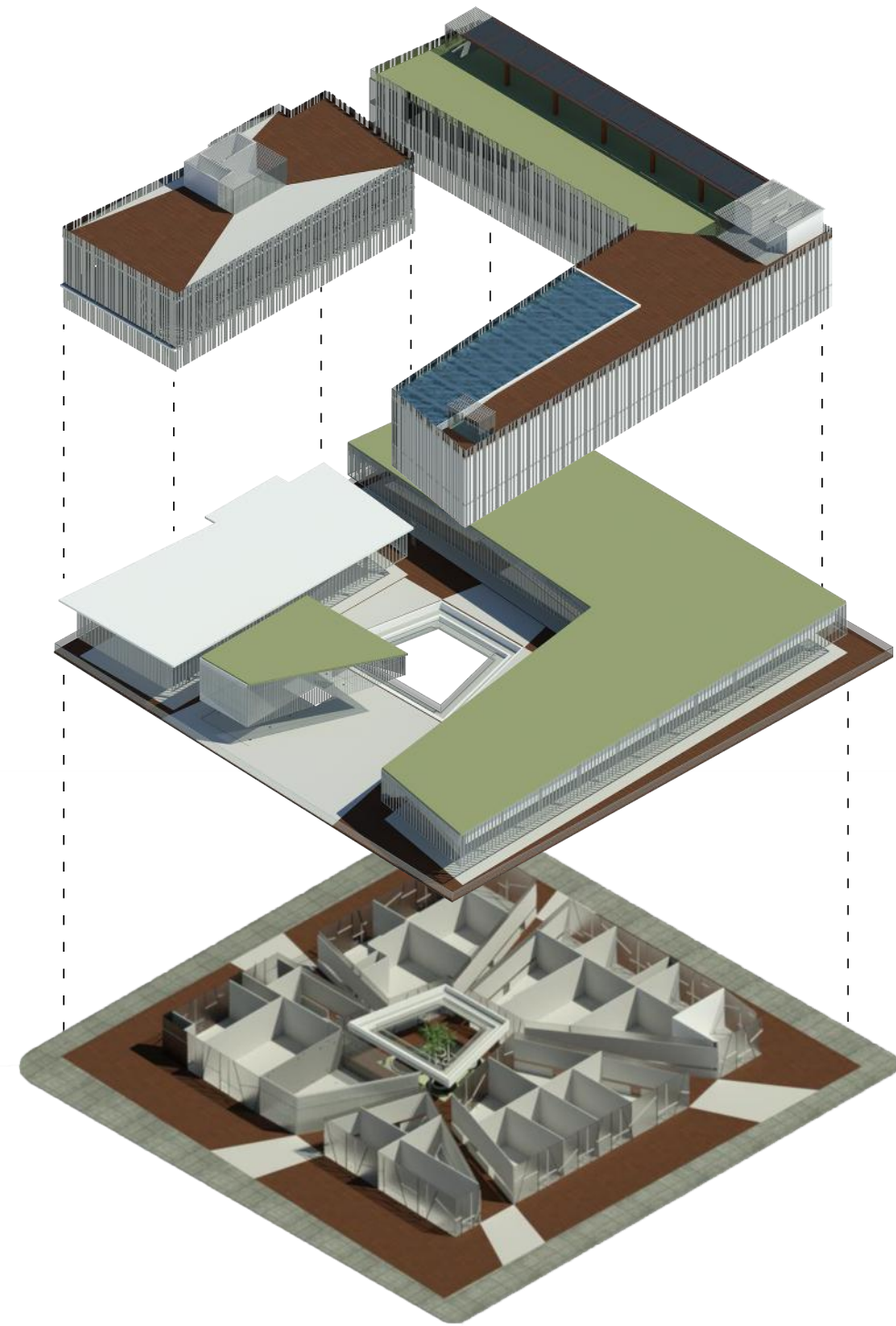
The separation of the program of this mixed-use building into different architectural elements helps this building stand out from its surroundings.

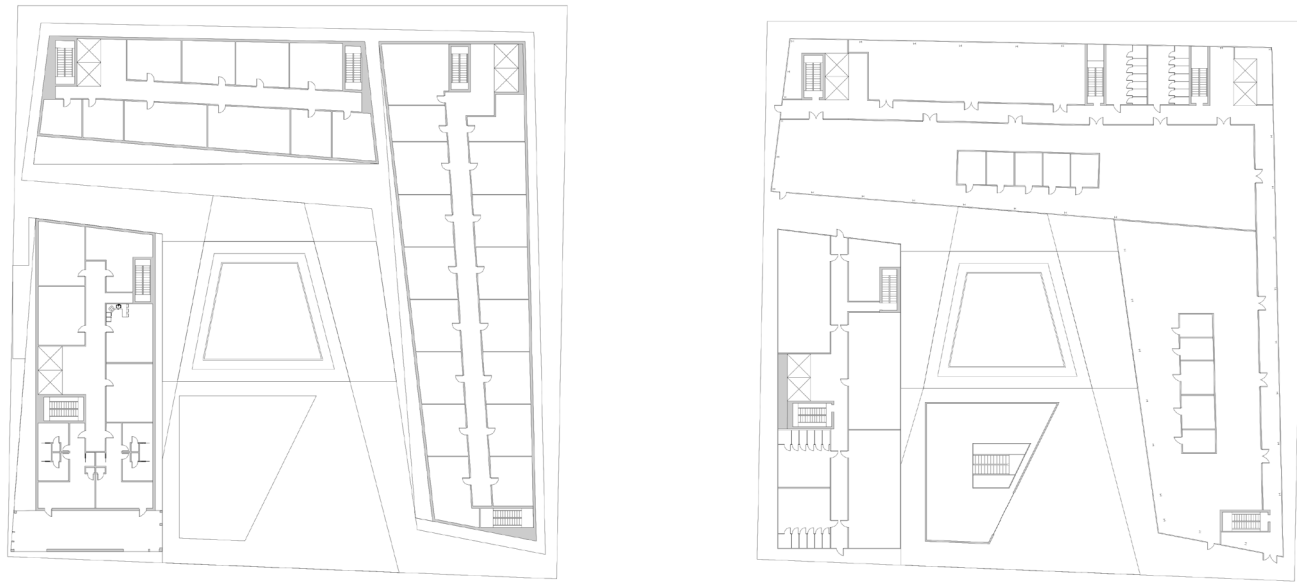
Retail areas on the ground floor are accessible from every side of the block and are all connected by an interior communal courtyard.

Communal spaces are highly stressed and help connect the separated residential towers to the rest of the building, including the various office spaces, in multiple locations.

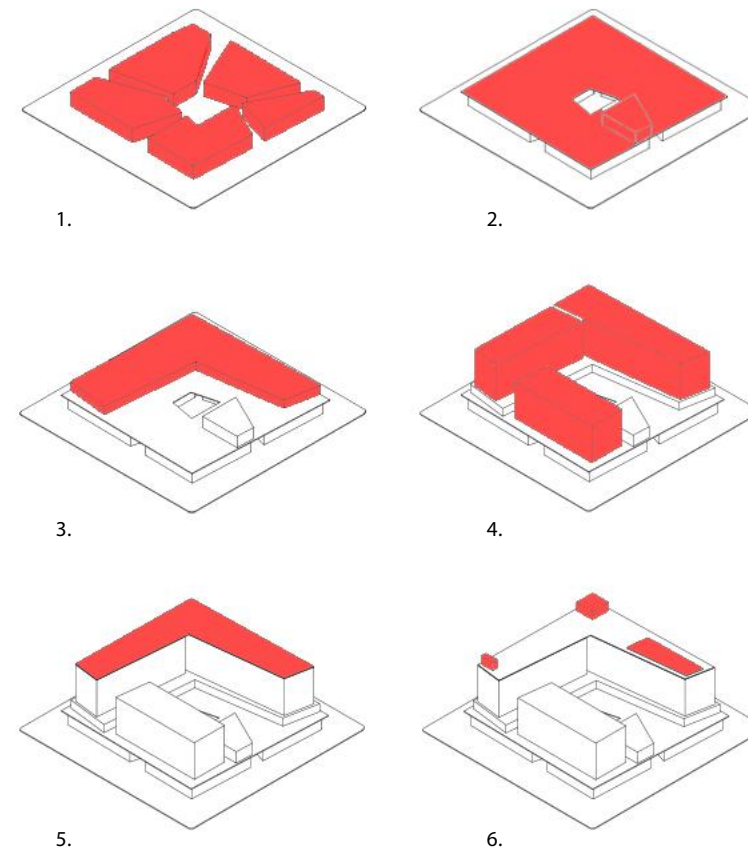
Lastly, the orientation of the building along with its strategically louvered facade allows for it to rest perfectly in its South Florida location.

*Voted "Best in Studio"





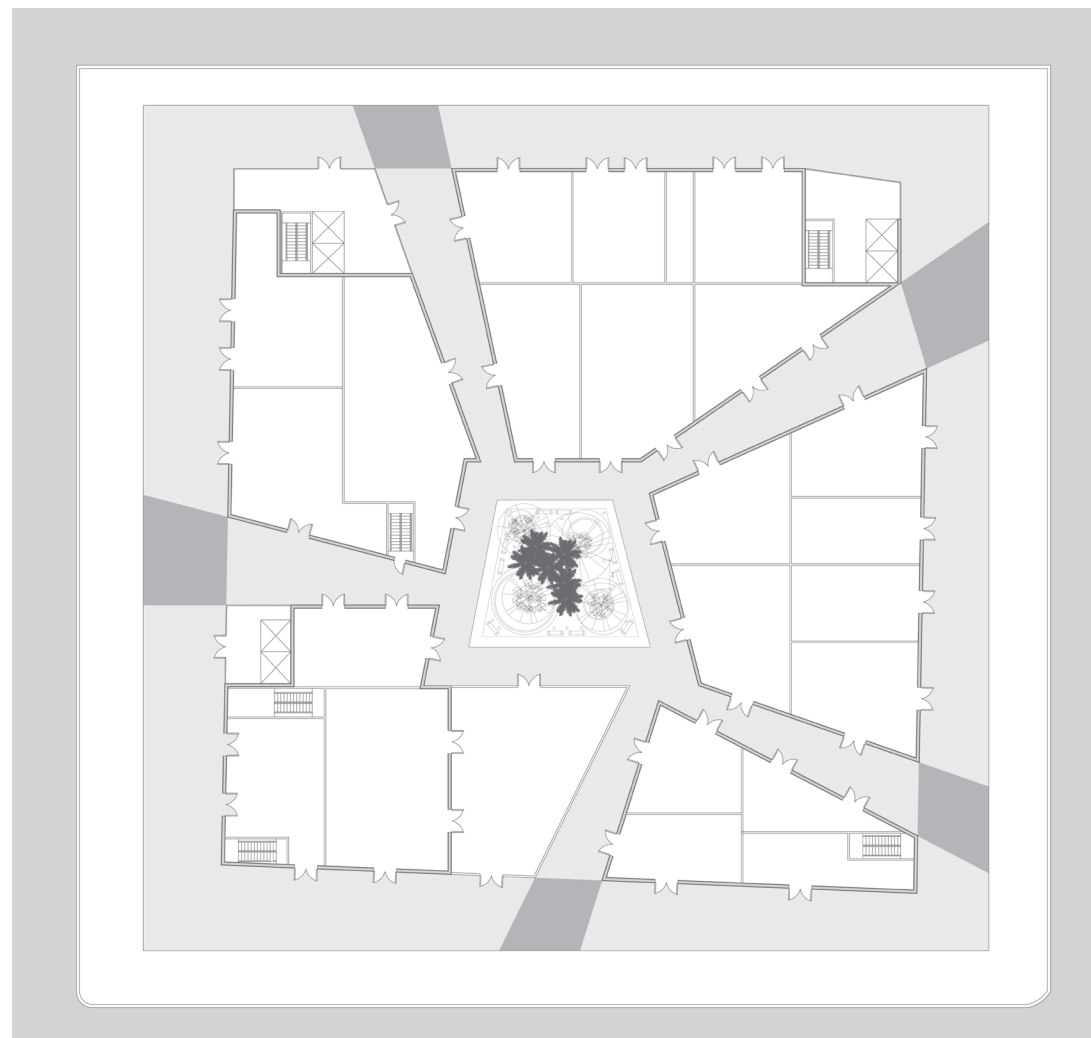
UPPER LEVEL FLOOR PLANS



MICRO UNIT



APARTMENT



GROUND FLOOR PLAN

CENTRAL RETAIL COURTYARD SPACE



1.4

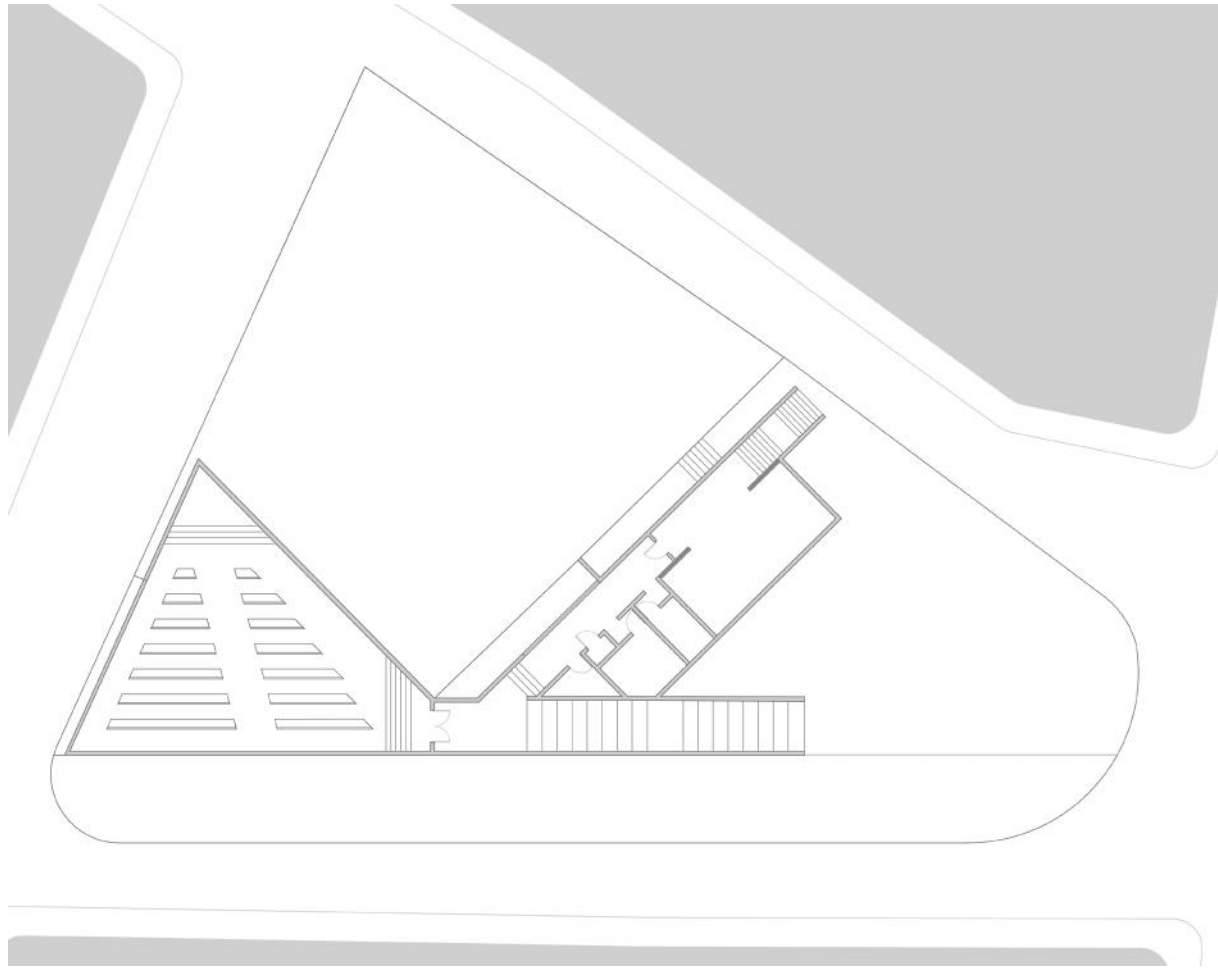
RIONE PONTE CHAPEL
FALL 2017
ROME, ITALY

The goal of the project is to create a special place for the program requirements while activating the surrounding public space- like all great modern projects in Rome seem to do.

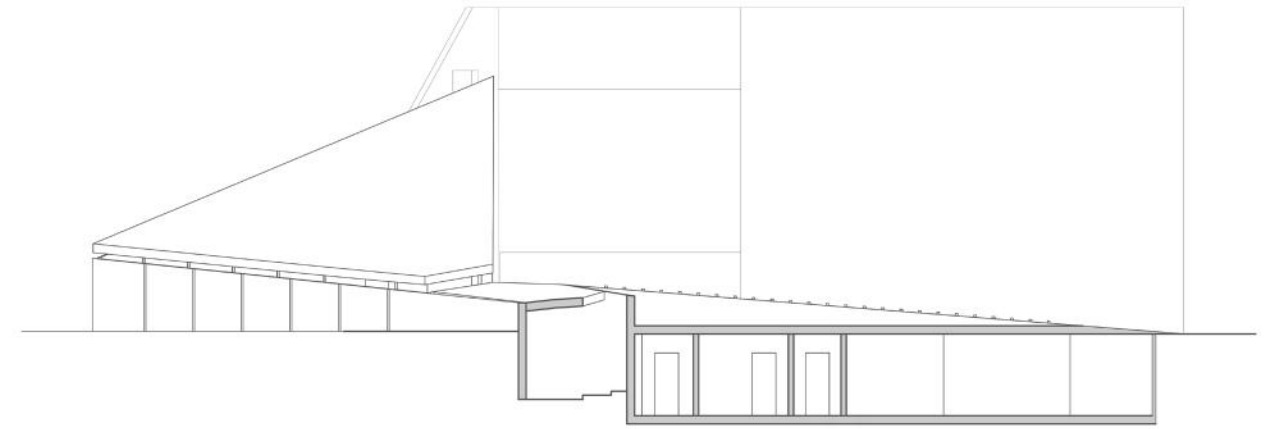
We are incorporating the existing wall on site into the chapel in order to maintain the character of the site and provide a unique restoration feature to the project. This will be a way to add the new, while maintaining the character of the old.

Placing the remaining program below ground will provide the opportunity to activate the ground level to be a public piazza. This spurs from the idea of descending downward into the sacred spaces of the project in order to create an uplifting and enlightening experience when entering the chapel proper. The proposal aims to build into the existing site opposed to building over it, while activating the open space on and around the ground level for public use. The use of locally sourced travertine can be seen as a way to incorporate the building even further into the site, while maintaining the unique characteristics of Roman building styles.



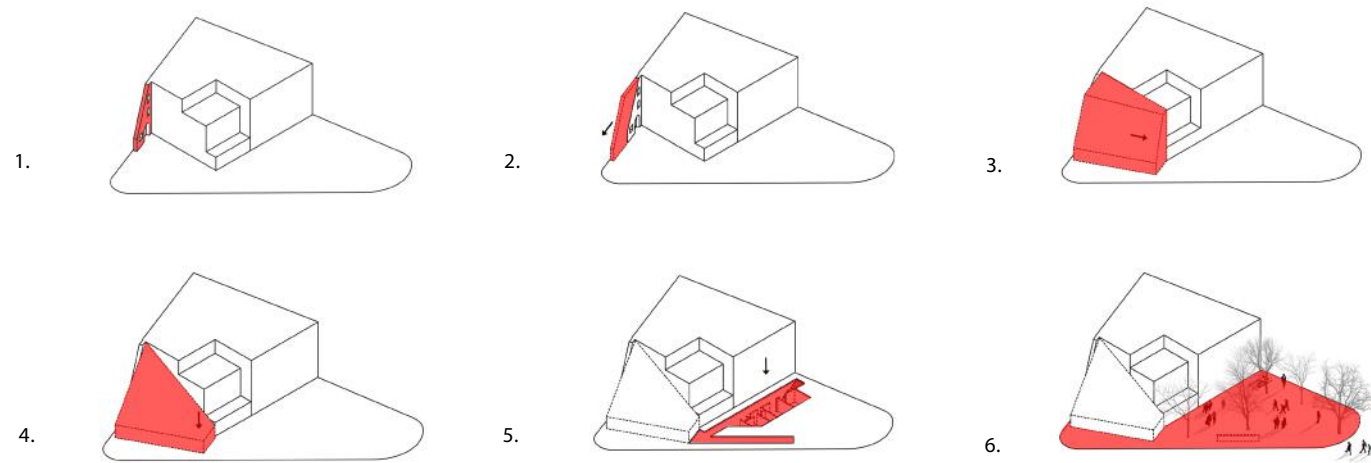


PLAN



SECTION

INTERIOR RENDERING



PROCESS DIAGRAM



2.1

FABRICATION

PARKING DAY MIAMI COMPETITION
FALL 2016
WYNWOOD, MIAMI, USA

Parking-Day Miami is a public contest in which participants are tasked is to use roughly 165SQF to create a 'parklet', utilizing the space in one on-street parking space in the Wynwood of Miami.

The theme of Parking day 2016 was: "Urban Agriculture".

Our team's idea was to emulate the standard building typology in Wynwood by creating a large white box. Similar to many warehouse buildings in the neighborhood, the program will be placed almost entirely within said box.

In collaboration with the people at local art gallery "Plant the future", we arrived at a solution.

We filled our elevated box with various tropical plants and a variety of art pieces done by the gallery. While these features are all hidden within the box, as one walks around the parking spot, a series of strategically placed mirrors expose the inner beauty of the installation.





PLYMOUTH EDUCATION

2519

2511

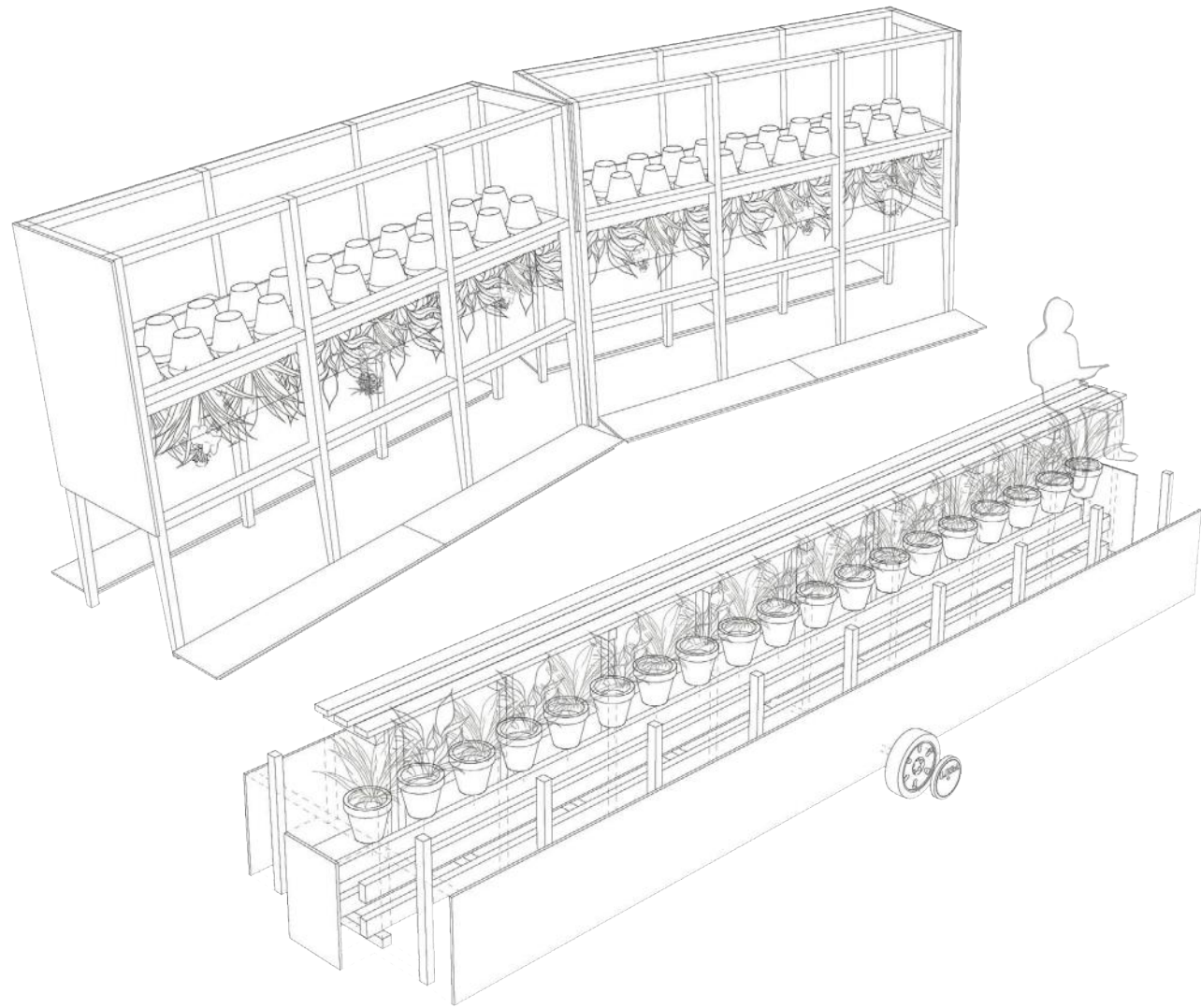
2511

Handwritten graffiti: "SANTO WEST CO."



ps





PROJECT AXONOMETRIC



PRODUCT SAMPLES



INSTALLATION PHOTOGRAPHS

3.1 RESEARCH

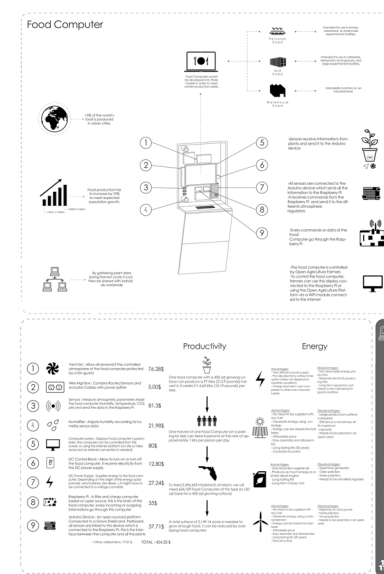
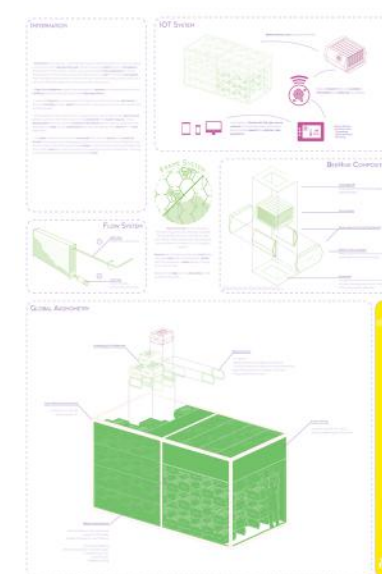
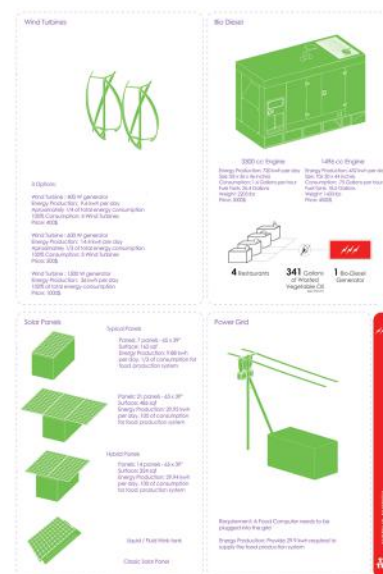
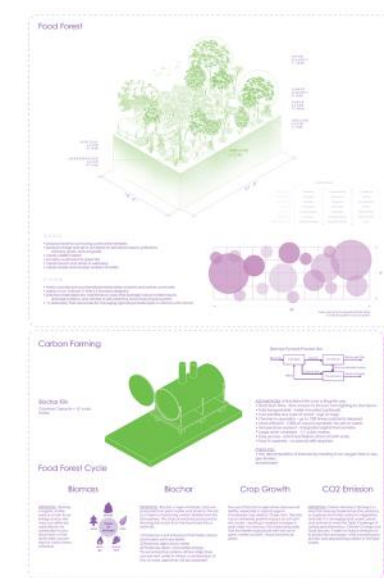
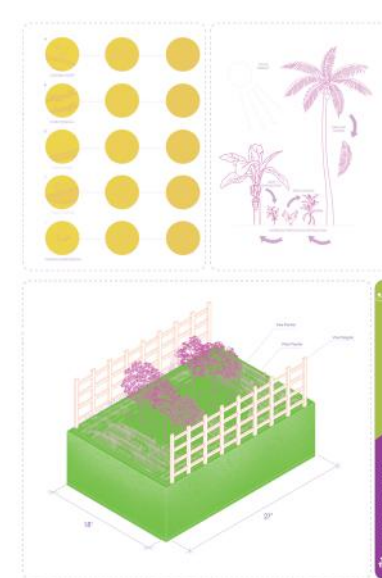
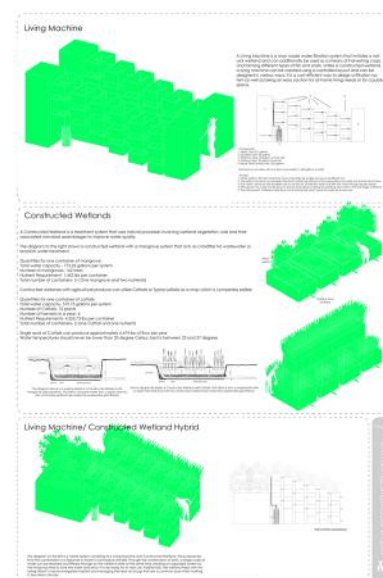
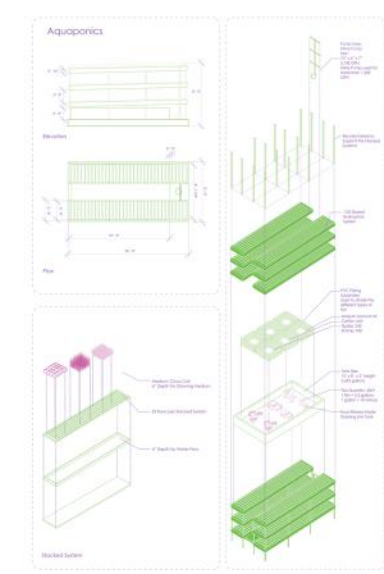
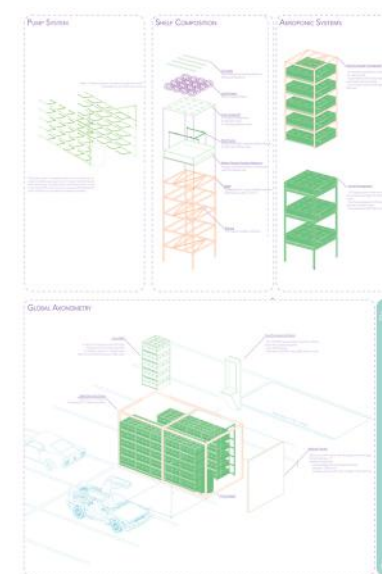
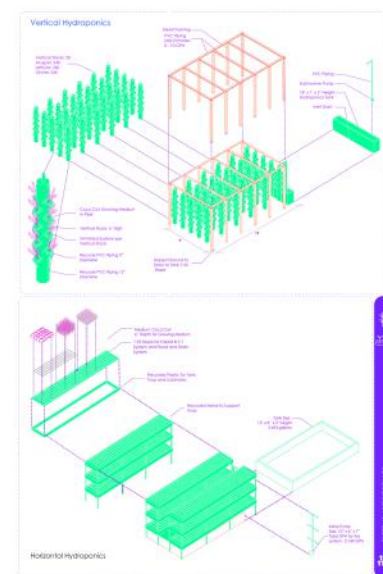
MIAMI FOOD PRODUCTION EXHIBITION

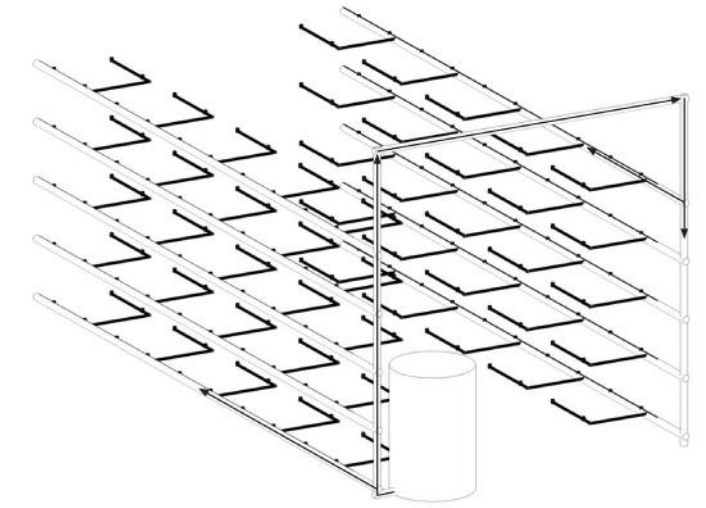
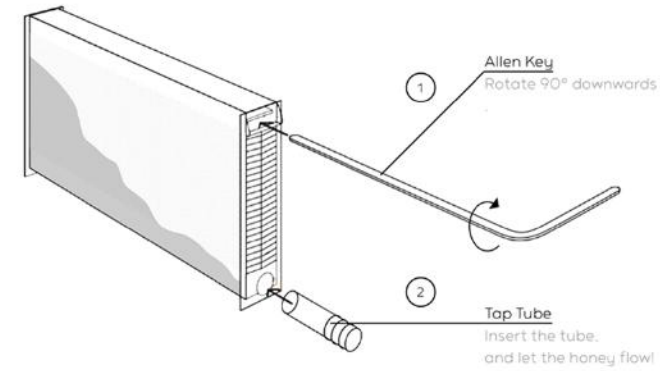
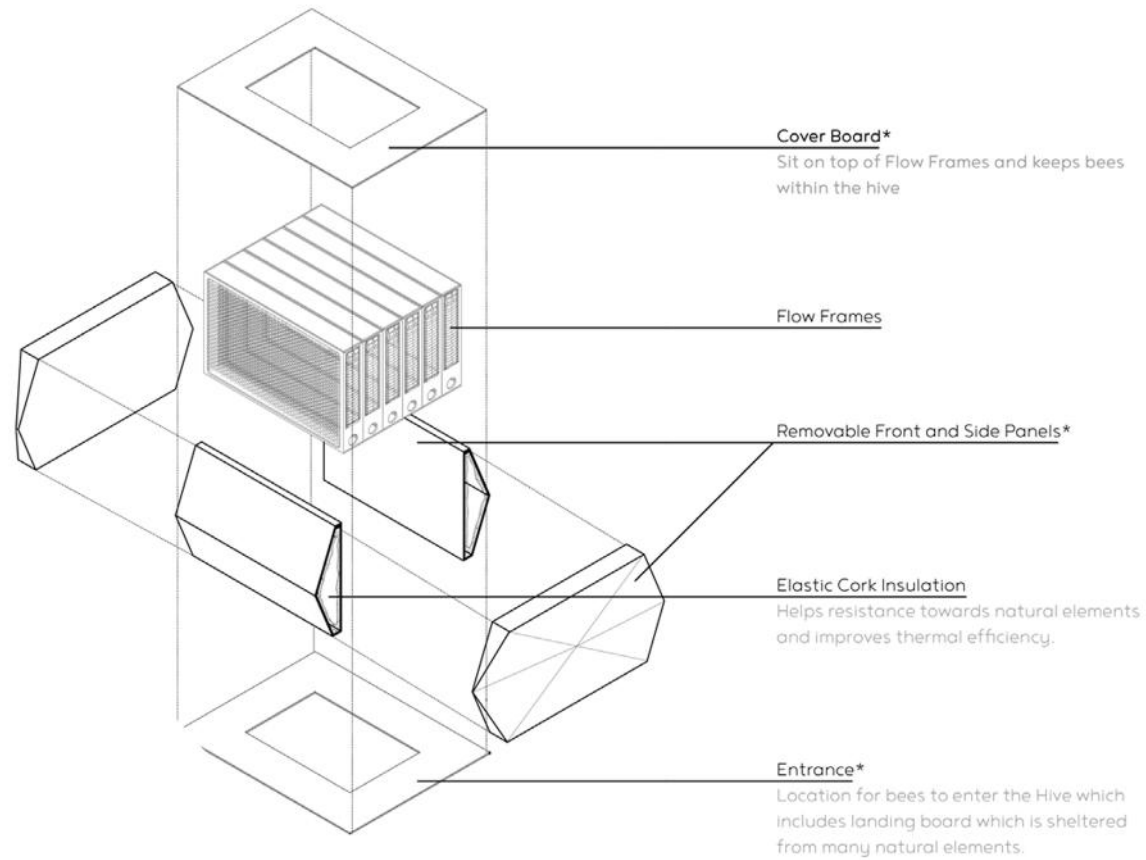
In this experimental, re-search-based, design studio, different groups were tasked with the research of different aspects of modern food production methods.

After having done this research, teams were assigned to create modular food production units the size of a parking space, which utilized the methods each team had researched.

Ultimately, these systems were implemented into various 'doomsday' food production simulations by other students in the studio.

Myself and one other were in charge of organizing all of the studio's research into an exhibition to be displayed, along with the rest of the studio's work, at the Faena Hotel gallery space in Miami Beach.





SYSTEM DETAILS

