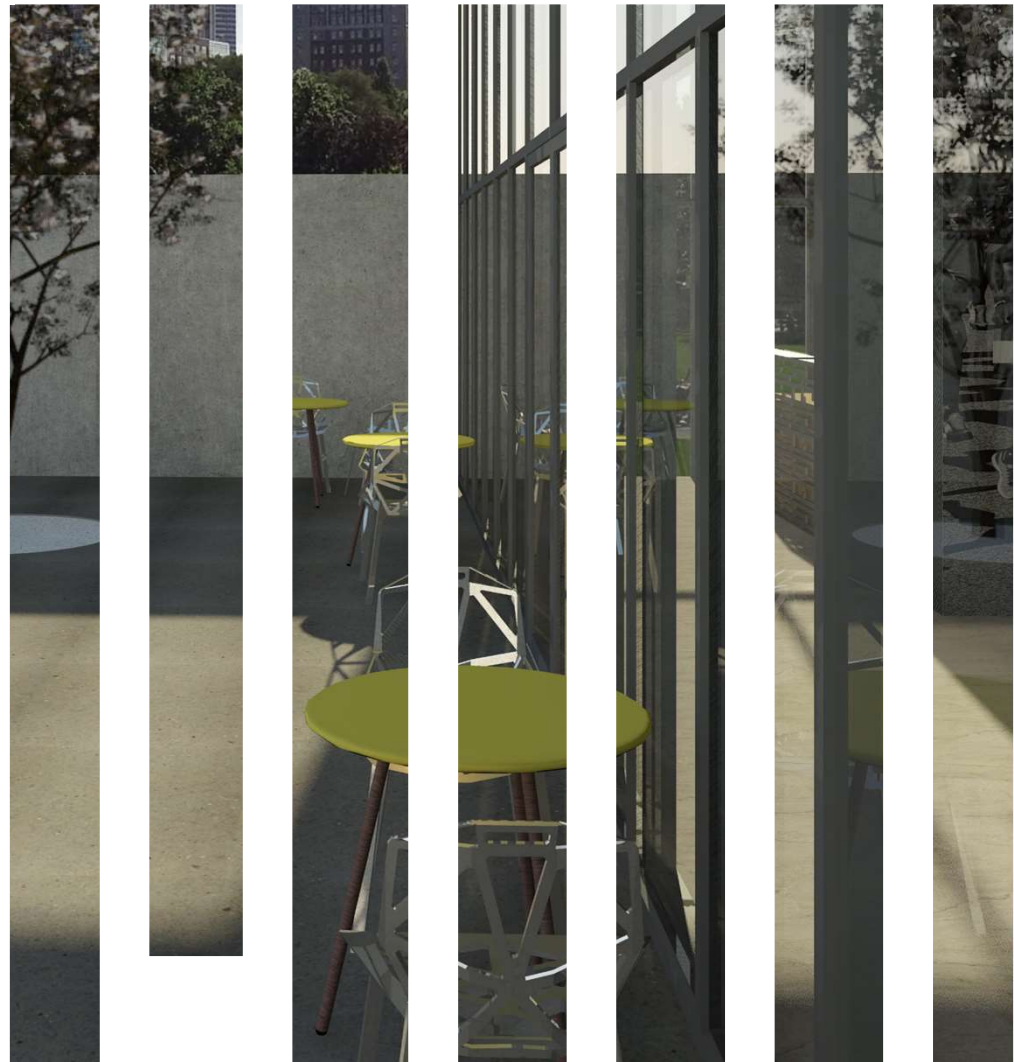


AUDREY DITTMAR P O R T F O L I O



---

# CONTENTS

---

COUNTRY CLUB

INTERIOR / EXTERIOR

RESTAURANT

INTERIOR

MEMORIAL MUSEUM

INTERIOR

ARTWORK

# COUNTRY CLUB

## INTERIOR / EXTERIOR

### Description:

The Riverbend Estates Country Club serves as a private center in a neighborhood for 55+ active adults. The Country Club is designed to reflect the simplistic beauty and highly valued precious stone, the diamond. It serves as a constant reminder to its residents the worth of their lives. This was a project designed with two other designers in a collaboration studio. The imagery and work shown was designed and rendered by Audrey Dittmar.

---

### DESIGN CONCEPT:

Diamond

### PROGRAM:

Revit

---







---

The interior Entry gives residents and guests the opportunity to relax while waiting for their car from valet or a place to engage in conversation. It is a bright and open space with the flexibility to alter the lighting levels in conjunction with daylight flooding into the space. The entrances to the restrooms are on the west and east ends of the space.







---

The Reception follows the Entry Area and provides guests with assistance and instruction. Behind the Reception is the Elevator Lobby with two elevators leading up to the second level. In addition, there are two storage closets behind both of the elevator shafts.



---

North of the Elevator Lobby and Reception is a lounge for residents and guests. The space serves a wide variety of functions, with the flexibility to move chairs for collaborating or utilizing the space to relax with a view of the pool. The large vertical green wall is self-sufficient with an automatic watering system. The second level overlooks the first level to create a more open plan.





---

The Library offers a quiet space for residents to read or meet for small group meetings. The division wall allows for a more private open space that feels comfortable and welcoming. The space is flooded with natural light through glare-resistant glass. The wood ceiling absorbs sounds throughout the second level to ensure a quiet place for residents. The entrances to the second level restrooms are on the west and east sides of the Library.





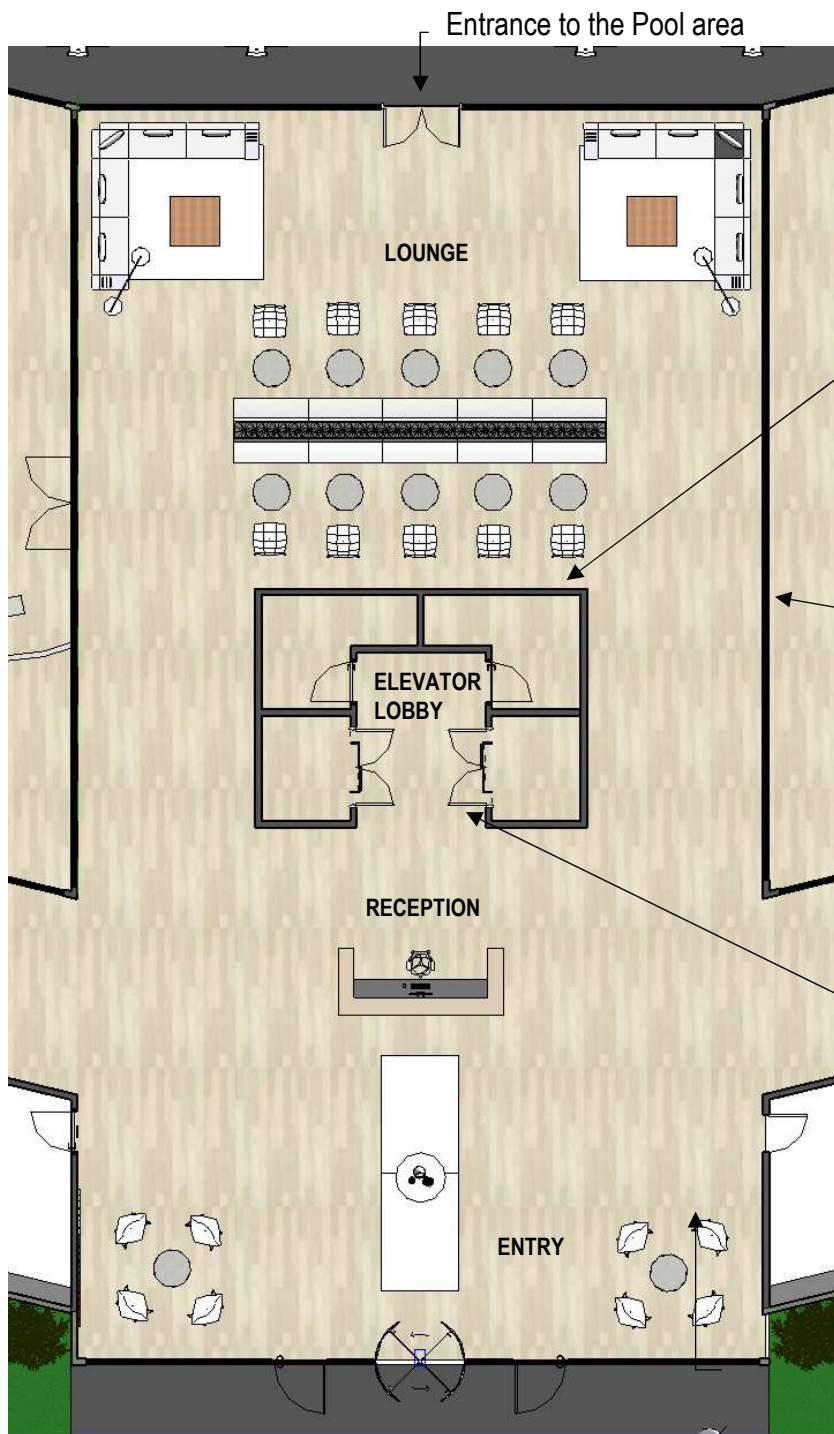
---

The swim-up bar provides residents and guests with beverages and appetizers at the pool. There are two entries to the bar accessible for staff that lead out to the pool area. A large room for food and drink storage is located behind the bar, as well as an additional bar on the north side that serves as a supplementary space for those not using the pool.



---

The Pool area offers a variety of seating for residents and guests. With spaces for dining, relaxation, and pool-side seating, there is a wide range of versatility for any occasion in the space. The entrance of the pool can be accessed either by pool ladders or two large ramps on the west and east sides of the pool. In addition, a swim-up bar with seating in the pool is offered for those using the space.



Level One Floor Plan

\*Ceiling in Entry/Lounge 14' AFF

\*Additional first level done by others



Overlook to the first level

Electrical/Storage closets

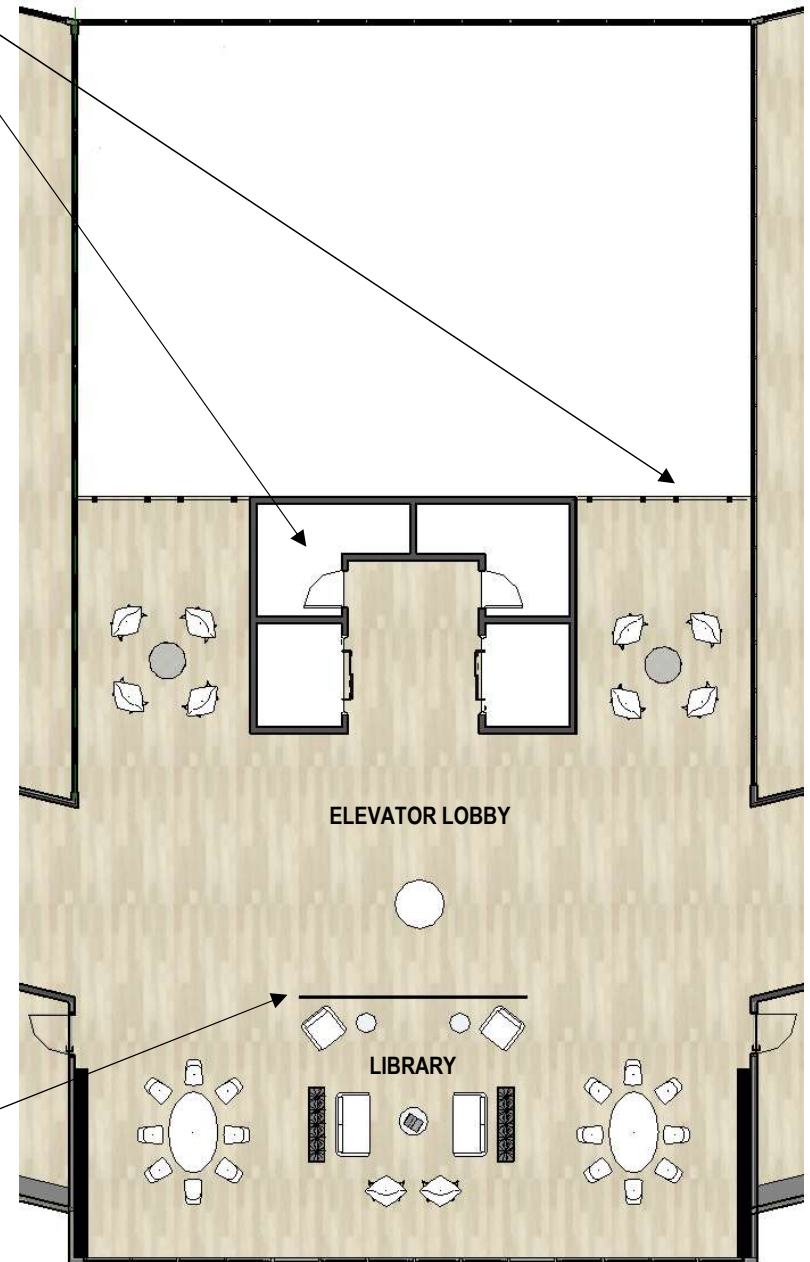
Self-sufficient vertical green living wall

Metal slats on curtain walls allow for privacy for a restaurant and we-works office spaces

Fire doors that close of the elevator doors in the case of a fire

Divider screen that can be easily moved

Full curtain wall



Level Two Floor Plan

\*Ceiling in Library 14' AFF

\*Additional second level done by others





KNOLL BERTOIA DIAMOND CHAIRS



KNOLL JEHS + LAUB LOUNGE CHAIR



KNOLL TULIP DINING CHAIR



KNOLL SAARINEN COFFEE TABLE



HIGHTOWER ARLO HIGHBACK CHAIR



KNOLL SAARINEN DINING TABLE



LE MUR SOFA



HIGHTOWER ARLO LOWBACK SOFA



HIGHTOWER MONOLAG MODULAR SEATING



HIGHTOWER BRECK SIDE TABLE



EUREKA RING PENDANT LIGHT



GLOBAL LIGHTING TRIANGLE PENDANT

---

**DESIGN CONCEPT:**

Palo Duro Canyon

**PROGRAM:**

Revit

---

# RESTAURANT

## INTERIOR

### Description:

Skyviews Restaurant and Bar is run by the Restaurant and Hotel Management Students at Texas Tech, who requested a new design for the interior buildout of the space. The entirety of the restaurant is conceptualized by the landscape of Palo Duro Canyon, located on the outskirts of Lubbock, Texas. The natural ruggedness of the landscape is emphasized in the colors and textures of the restaurant, as well as the geometry of the furniture.











---

The Entrance to the Restaurant is accompanied by a waiting area near the Bar Lounge. With a Hostess stand right at the Entry door that has lighting surrounding the signage, it is easy to distinguish wayfinding within this space.





---

The Bar area seats 12 and serves as a waiting area or an additional area to order food and drink. The entrance to the fire stairs is located through the walkway in the center of the bar and is indicated with an exit sign. There is an additional entrance to the kitchen through the walkway as well.



The Bar Lounge seats 18 and serves as an additional seating area for the bar or as a waiting area for the dining room. The lighting can be dimmed per occasion.





---

The smaller Conference and Private Dining Room seats 10 and is served by a private catering kitchen next to the Wine Tasting room. An additional entrance to the Office is located on the east side of the room.



---

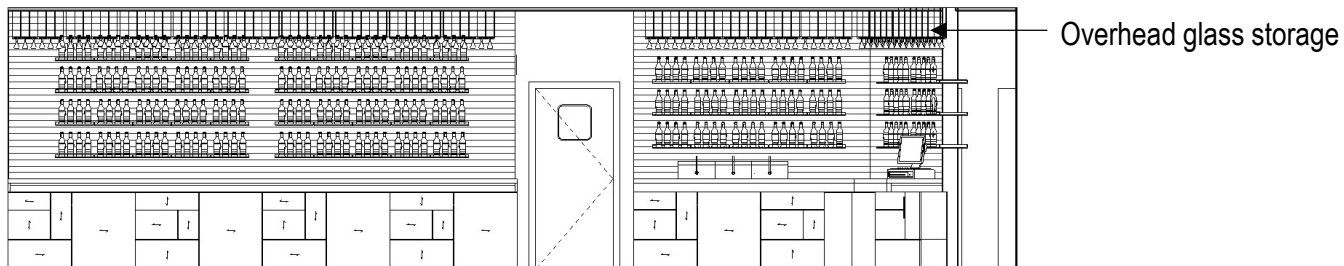
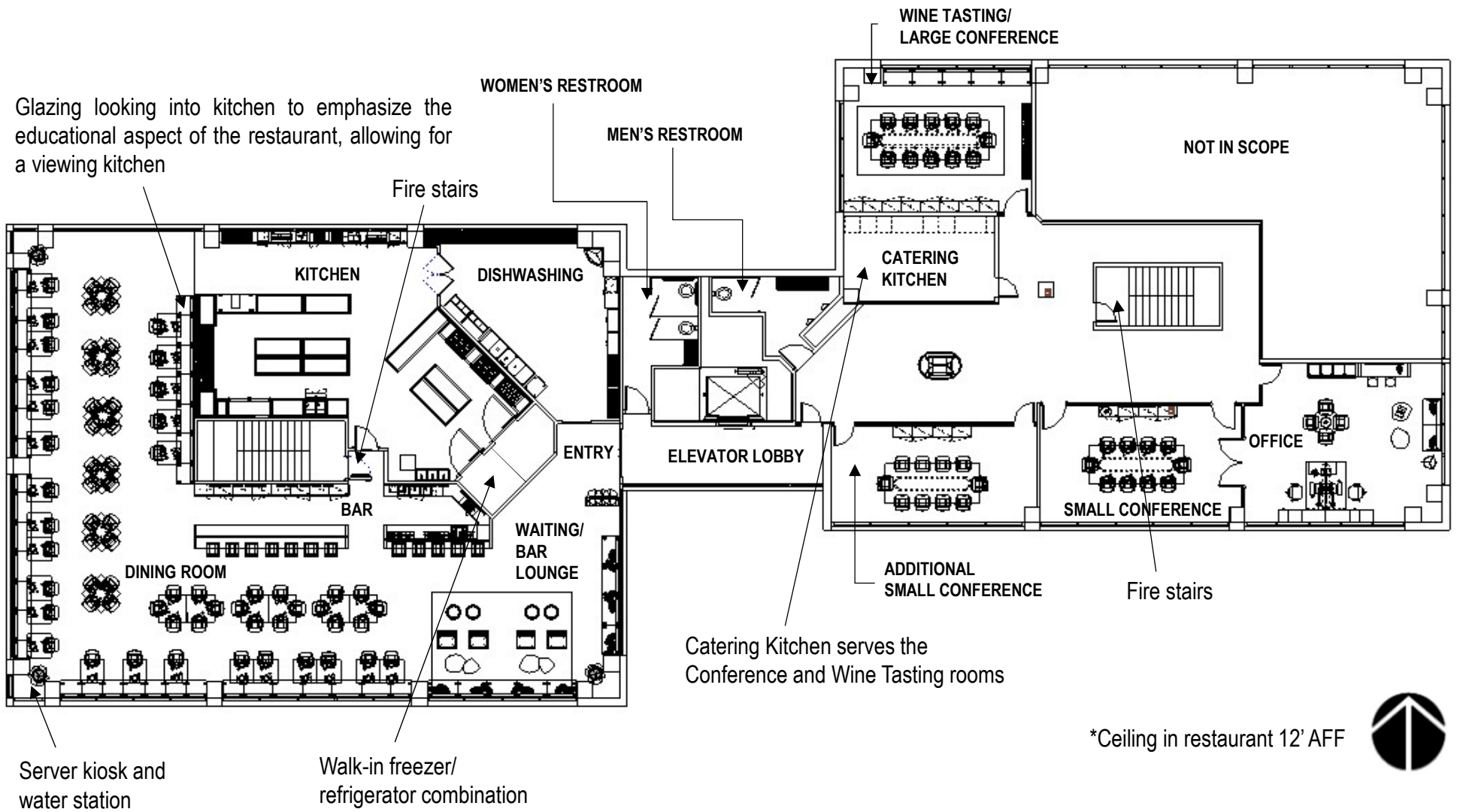
The larger Private Dining and Wine Tasting Room seats 12 with additional banquette seating underneath the curtain wall. The table can be broken up into four to make wine tastings flexible for different parties. The wall covering is made of cork to emphasize the purpose of the room. This room is served by a private catering kitchen.

---

The Office consists of two workstations for management. There are two meeting areas, one formal and the other informal, with a television for scheduling and presentations when necessary.







Bar Area – North

BERNHARDT DINING CHAIR



BERNHARDT ROUND DINING TABLE



BERNHARDT BAR STOOL



SHELBY WILLIAMS BANQUETTE SEAT



BERNHARDT SQUARE DINING TABLE



BERNHARDT FABION BARON CHAIR

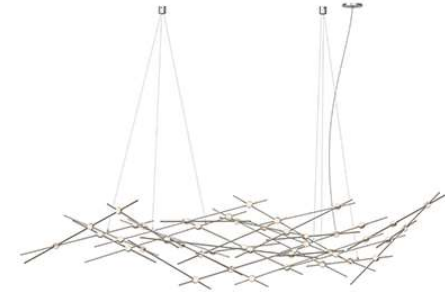
BERNHARDT COFFEE TABLE



BERNHARDT DINING TABLE



SONNEMAN PENDANT



ACTIU DESKING SYSTEM



BERNHARDT CONFERENCE TABLE



EUREKA PENDANT

# MEMORIAL MUSEUM

## INTERIOR

### Description:

This museum is devoted to memorializing the Boston Marathon Bombing. This space is conceptualized with the intention of restoring existence among those closely affected by the tragedy of the Boston Marathon Bombing. The design will theorize gestalt for coherence, as well as emotive and associative romanticism through the application of sustainable design. By utilizing the theory of gestalt, the viewer will feel at ease with positive emotions as they travel through the space. The design will bring a sense of closure and simplicity by filling a void of sadness, as well as taking an event that is so chaotic and turning it into something simpler and easier to understand. The design will focus on the rehabilitation of an individual affected by the Boston Marathon Bombing in any way.

---

### DESIGN CONCEPT:

Gestalt

### PROGRAM:

Revit

---







---

The Reception of the Museum is accompanied by a storage closet. The lighting above the desk is made to look like the bottom of running shoes, chosen to emphasize those who lost their lives during this tragedy. In addition, the blue granite shown behind the reception reflects native materials used in the city of Boston.





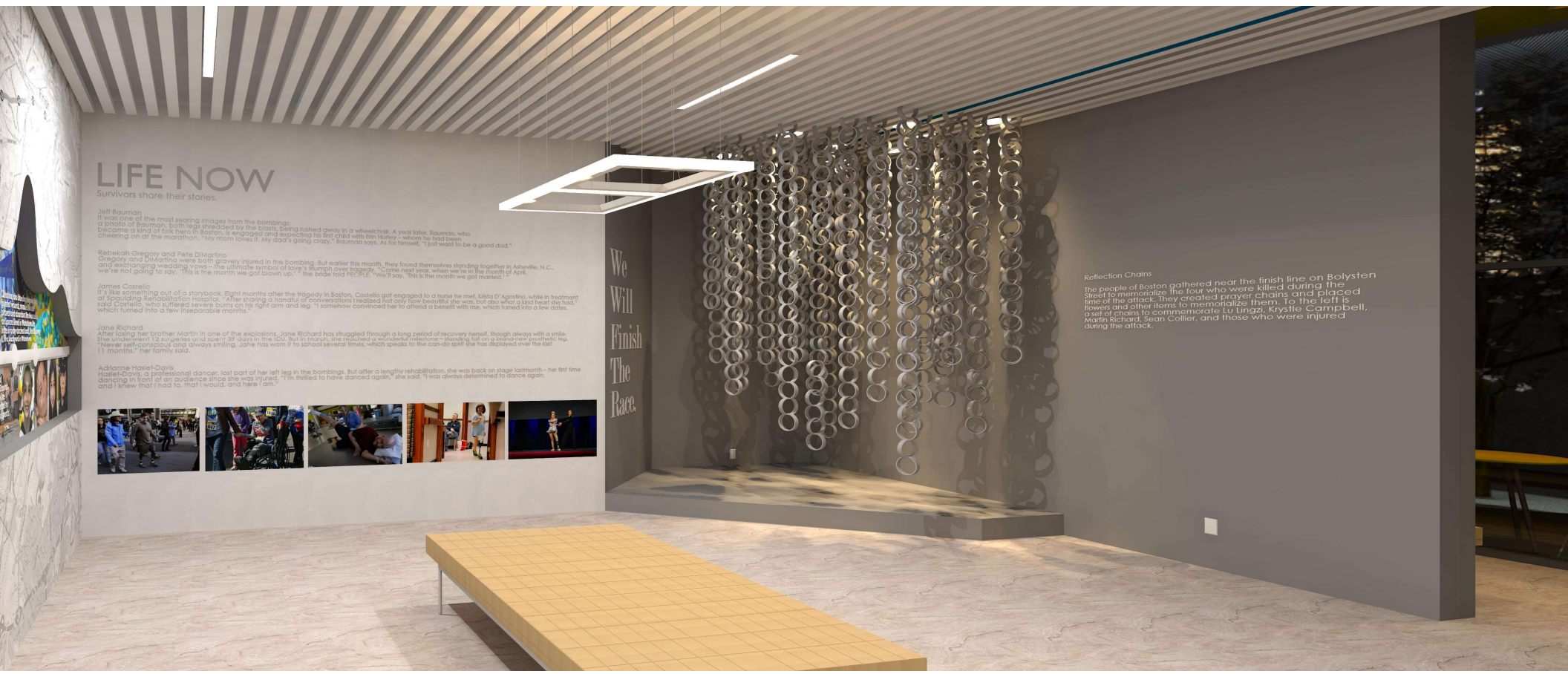
A large LED screen on the back wall of the space portrays a timeline of events leading up to the attack and the aftermath. The wall is covered in imagery of a map of Boston and the shape of the LED screen depicting the elevation of the marathon course.



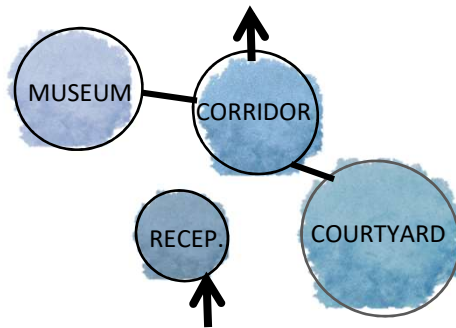
When entering the space, the first thing you see is a history of the marathon, as the museum serves not only as a memorial, but also an educational tool for students and families.



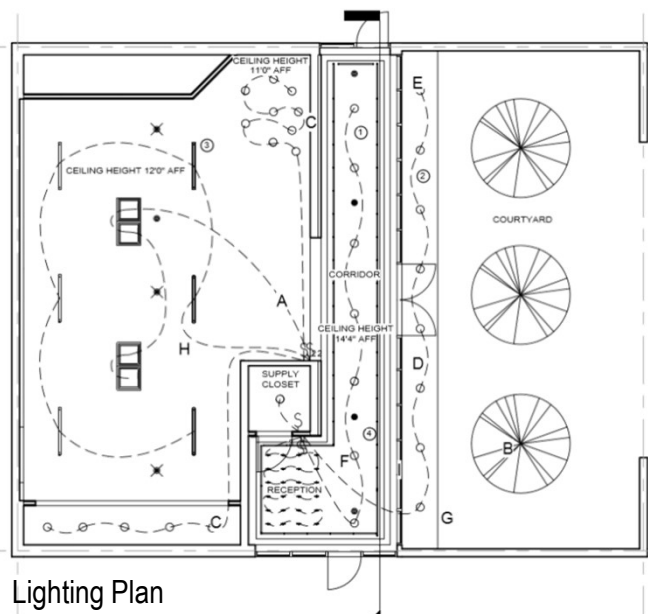
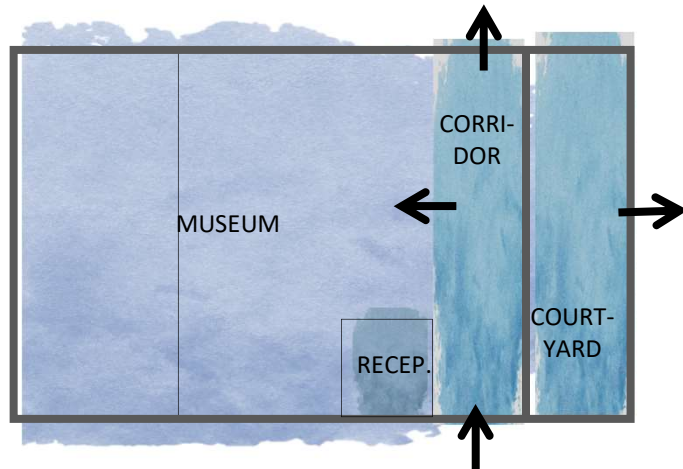
The north wall of the space portrays quotes and stories from individuals who survived or lost a loved one during the bombing. In addition, chains hang from the ceiling as an interactive way to involve visitors, who can write prayers, quotes, or notes on a strip of paper and chain it to the others. This idea was originally implemented by the citizens of Boston who chained prayers to the marathon security gates during the days following the attacks as a symbol of peace and love within the city of Boston and the rest of our country.



FINAL BUBBLE DIAGRAM



FINAL BLOCKING DIAGRAM



Lighting Plan

	DOUBLE SWITCH
	SINGLE SWITCH
	THREE-WAY SWITCH
	EXIT SIGN
	FULLY RECESSED SPRINKLER HEAD
	SMOKE DETECTOR
	LED PENDANT
	RECESSED CAN
	RECESSED CAN 45MM
	PENDANT STRIP LIGHT
	SWITCH LEGS

SYMBOLS LEGEND  
1/4" = 1'-0"

Used for electrical purposes.  
Diagonal wall opens for access.

Full curtain wall with glare-resistant glass to reduce glare correlating with the LED Screen in the Exhibit



LED screen of a timeline of events, outlined by the shape of the marathon's elevation

Full granite wall to incorporate Boston architecture into the space; the blue and yellow coloring symbolizes the marathon.

Cherry blossom trees symbolize the beauty that remained in Boston during the spring, the same time of the attacks.



\*Ceiling in Exhibit 12' AFF

\*Ceiling in Corridor 14'6" AFF



HERMAN MILLER EMBODY TASK CHAIR



HERMAN MILLER TUXEDO BENCH



BLA STATION KAFFE TABLE



HHERMAN MILLER MAGIS CHAIR



HERMAN MILLER NELSON BENCH



SONNEMAN SQUARE PENDANT

---

**STYLE:**

Hand Sketch

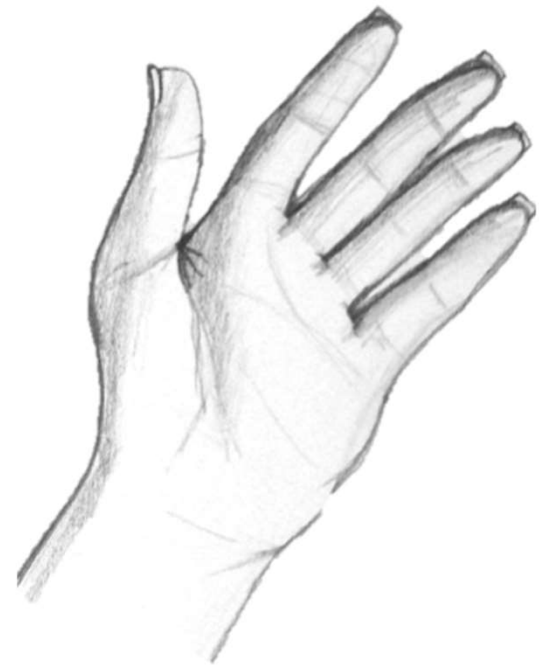
**MEDIUM:**

Graphite, Watercolor, Marker,  
Colored pencil

---

**Description:**

The artwork shown was from my freshman through senior year at Texas Tech. The Tiffany lamp on the top left was created using colored pencils and water color. The bottom left sketch depicts my own hand and was drawn using graphite. On the next page, a park bench made of watercolor and permanent marker is shown, in addition to a hand sketched drawing of inanimate lizards created using colored pencils.



# ARTWORK

---





# PORTFOLIO AUDREY DITTMAR

[audreyhdittmar@gmail.com](mailto:audreyhdittmar@gmail.com)

P: 469-585-7005

<https://www.linkedin.com/in/audrey-dittmar-dfw/>

