

The background of the entire image is a piece of marbled paper with a complex, organic pattern of swirling, vein-like shapes in shades of grey, blue, and white. The pattern is dense and fills the entire frame.

angela carbone

design oddities and curiosities

PLATE

Nº



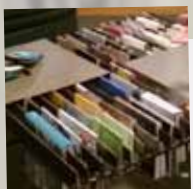
methods into madness: the un restroom 4



Enjoy! Cowhouse 16



Village Chapel NYC 24



Objects 30



Macellaio Seipp Prize 38



Ebb and Flow: Roma 42



Adoramus te: Laxe 48



thank you very much 52

METHODS INTO MADNESS: THE UNRESTROOM



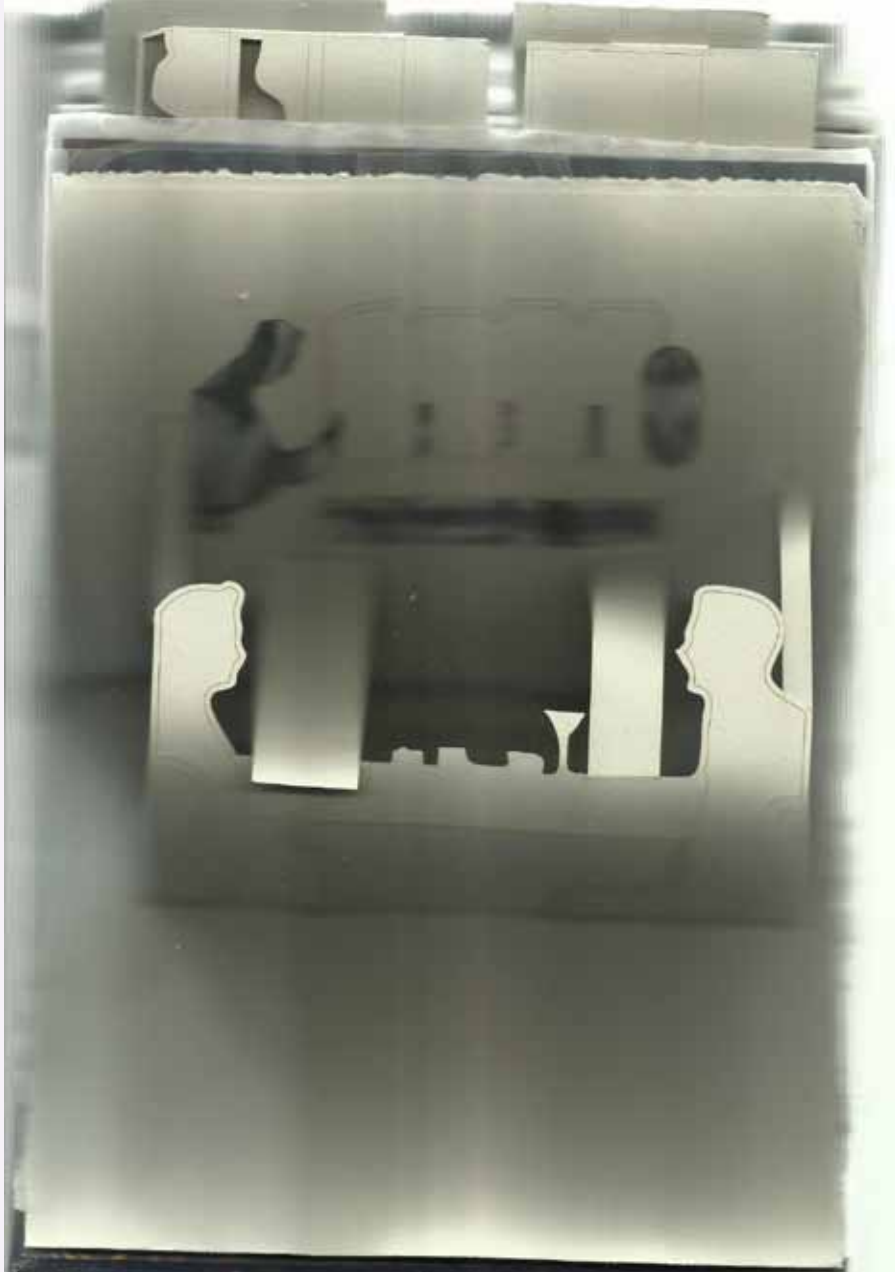
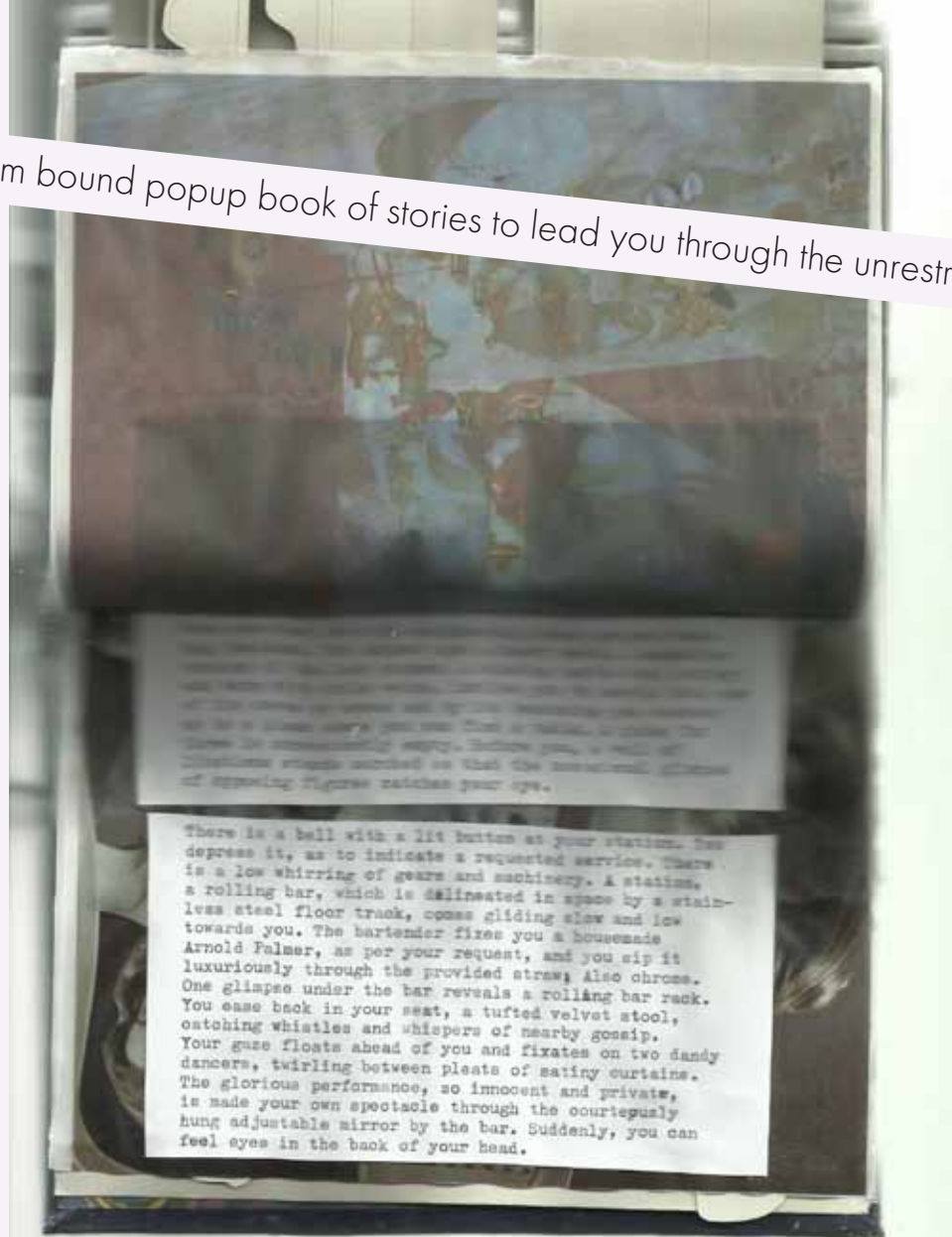
In built form and ambition the Metropolis has become larger than life so that it could contain Man's fantasies. Modernity has created a fixation upon the cognitively complex, an anxiety to realize designs which ooze desires.

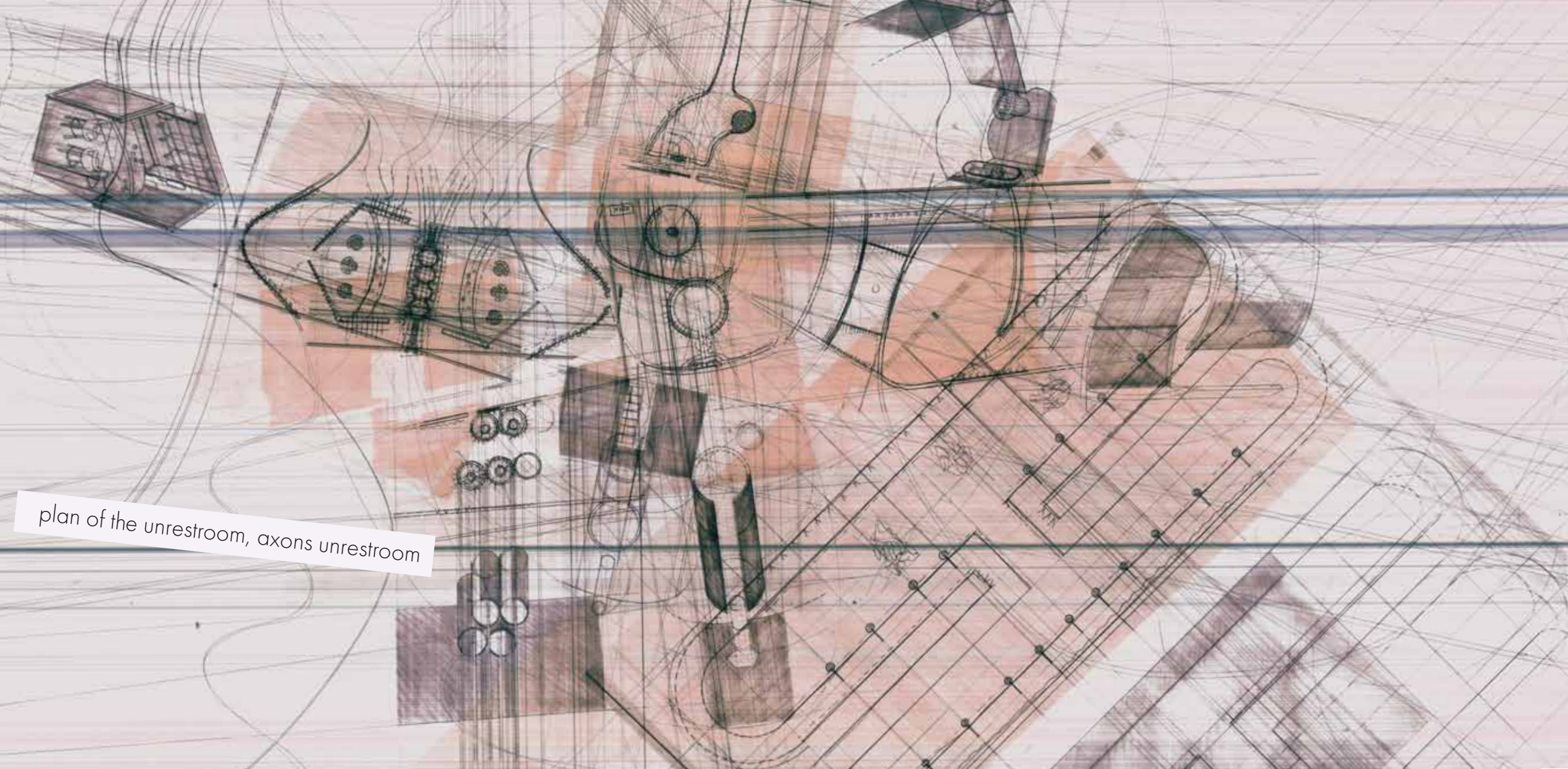
The psychological architecture of cities has become an accomplice to the behavior of its subjects—a kaleidoscope of 21st century schizoids, savants, and further permutations of the metropolitan denizen—all voluntary subjects of urbanity.

Their architectural fantasy? To soar above the basic needs of man and build self-actualization. This thesis imparts cues and curiosities from societal seats of anxiety, our restrooms, to explore the potential of architecture's abilities of entrainment, elevation, and extrication of the human condition.

This thesis used narrative and speculative collages to create and elucidate a particular fantasy engineered by **the unrestroom**. A multimedia presentation can be seen on the website: angelaccarbonate.com/theunrestroom

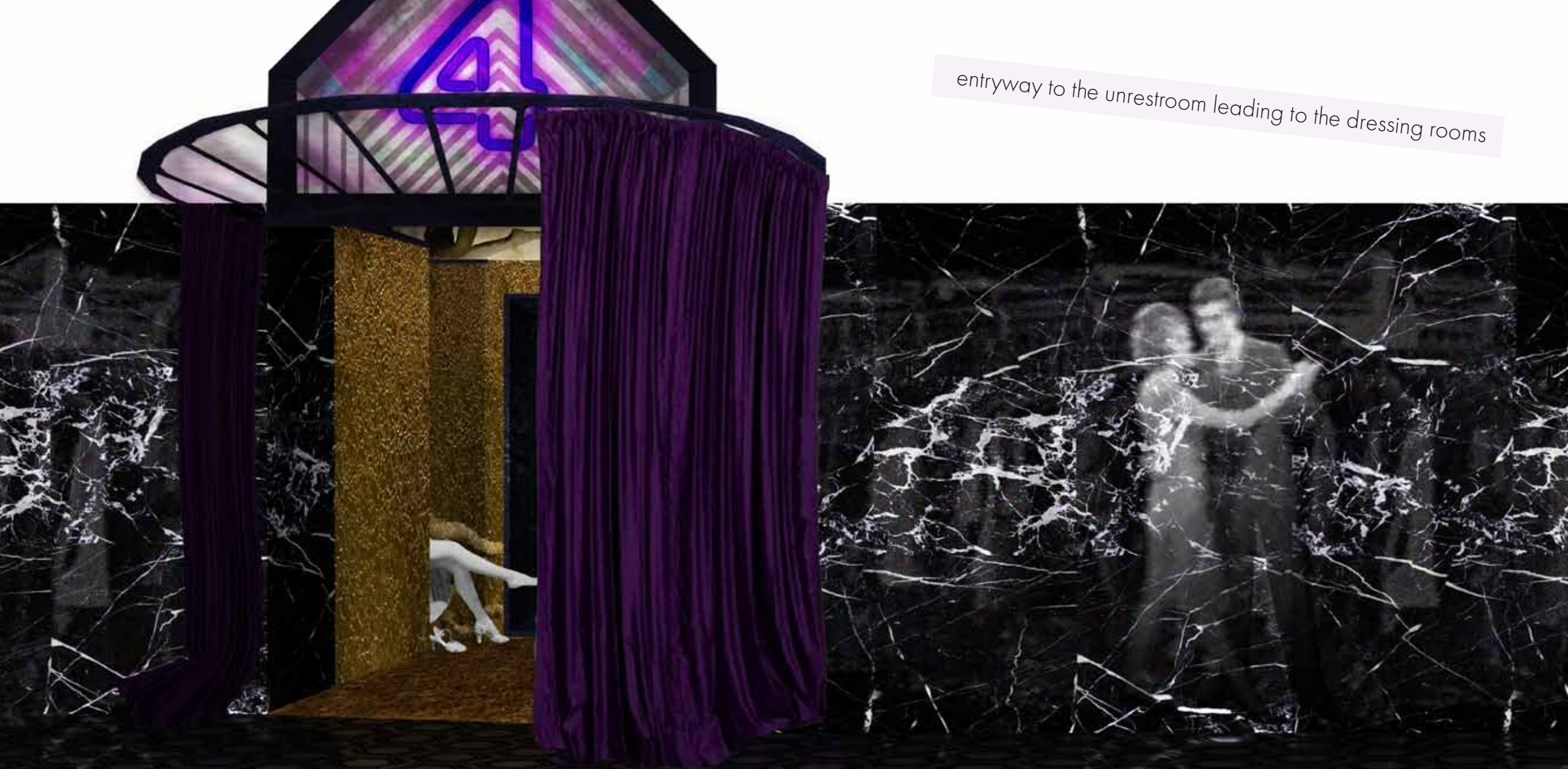
custom bound popup book of stories to lead you through the un restroom





plan of the unrestroom, axons unrestroom

entryway to the un restroom leading to the dressing rooms





a voyeur stumbles upon the audience who beholds the Bathing Beauty



patrons enjoy peeping through glassy liquor bottles and backwards mirrors



Welcome to
Cowhouse!

— Queens, New York —

birds eye collage

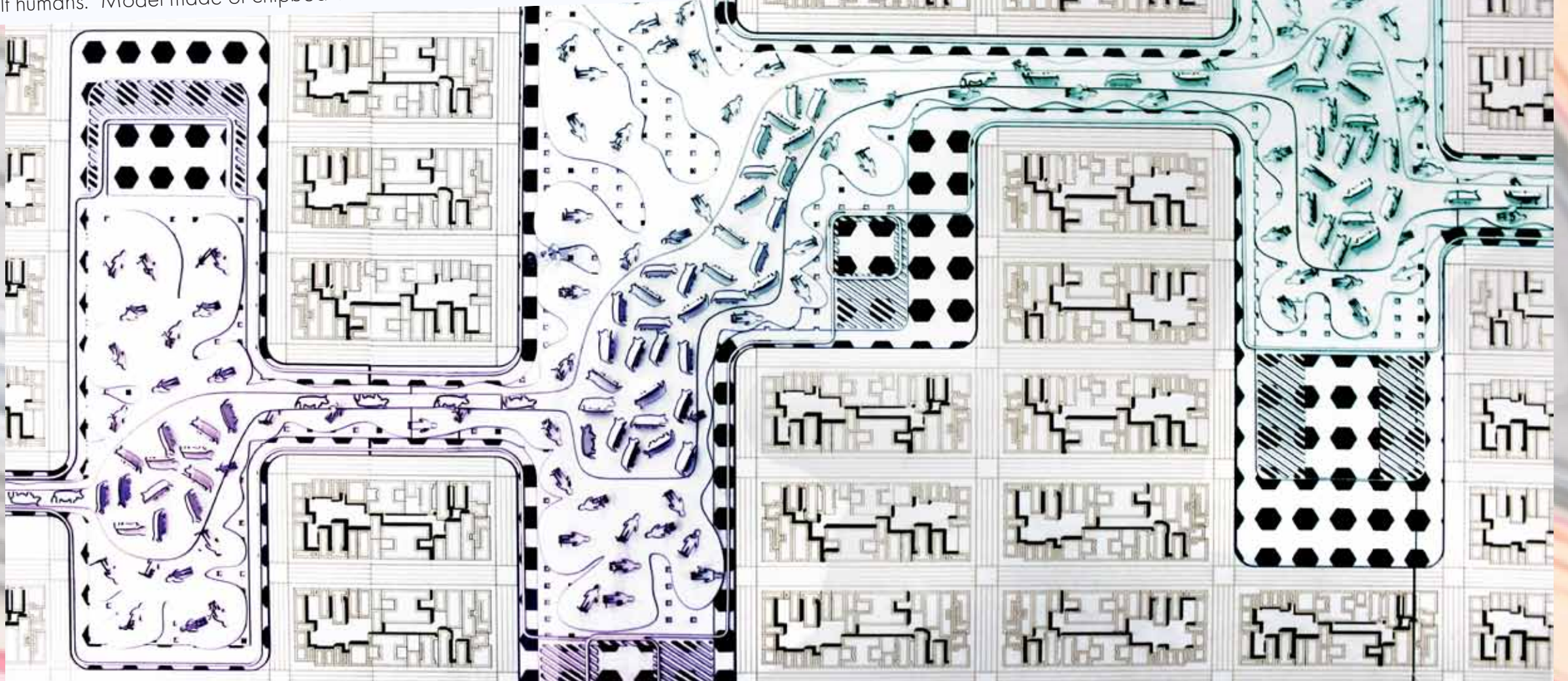
A foodshed describes the socio-geographic space of food flow from the point of production to the point of consumption. The present foodshed of New York is an example of how practices of 'householding' has exceeded the single household and has blown up beyond proportions to incite a global network of trade.

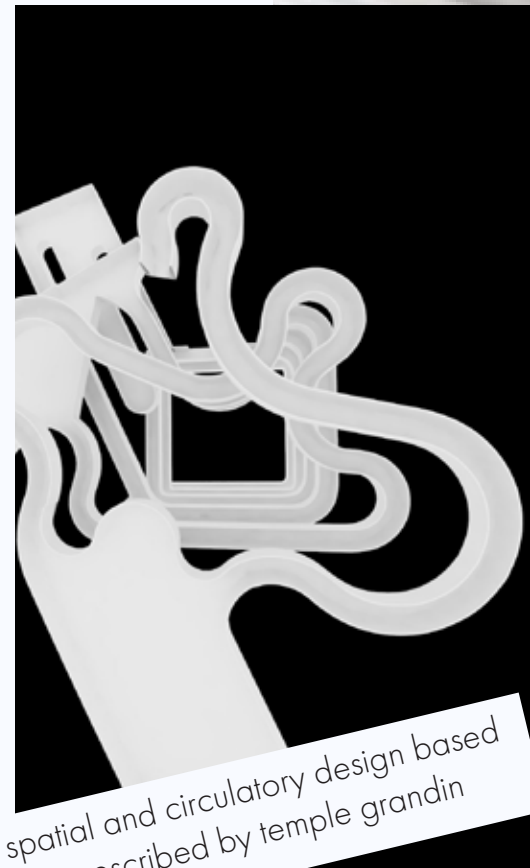
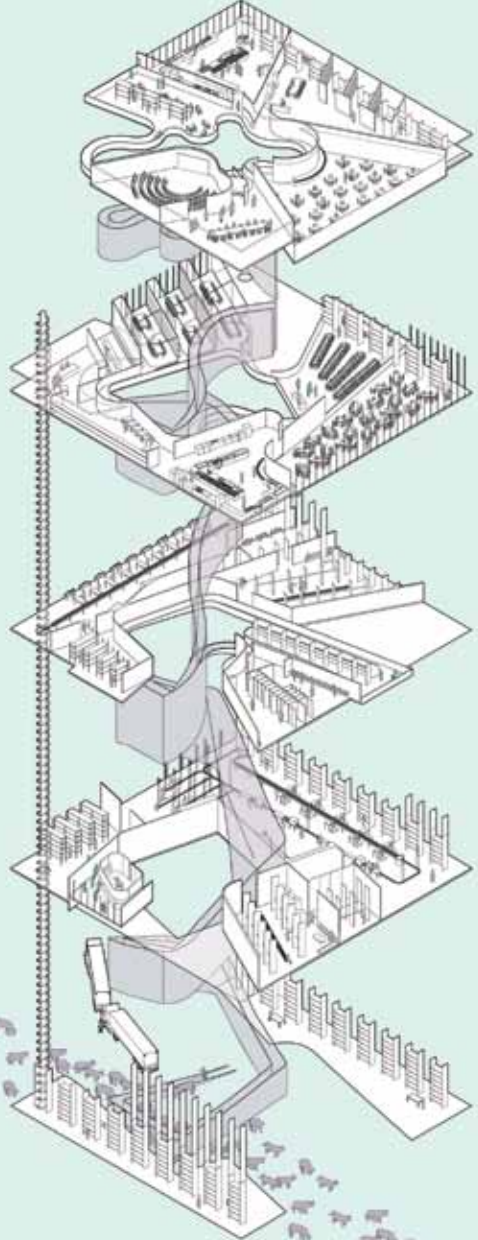
This excess and inefficiency was the genesis of **Cowhouse**, an architectural intervention aimed at re-structuring the corporately subsidized and hugely indulgent scale of production of US Beef. Cowhouse was designed to facilitate the retail operations of a 'steak house' while also utilizing green spaces in the surrounding area in order to both bring awareness to beef production in society (a cultural proximity which was ended after cattle houses were banished from urban coexistence in lower Manhattan) and to offset the huge environmental burden of beef consumption. It is a machine for enjoyment of beef, education about beef, proper apportionment of beef, but overall a vehicle for a beef revolution.

to read the complete manifesto and design principles, please visit:
angelacarbon.com/cowhouse

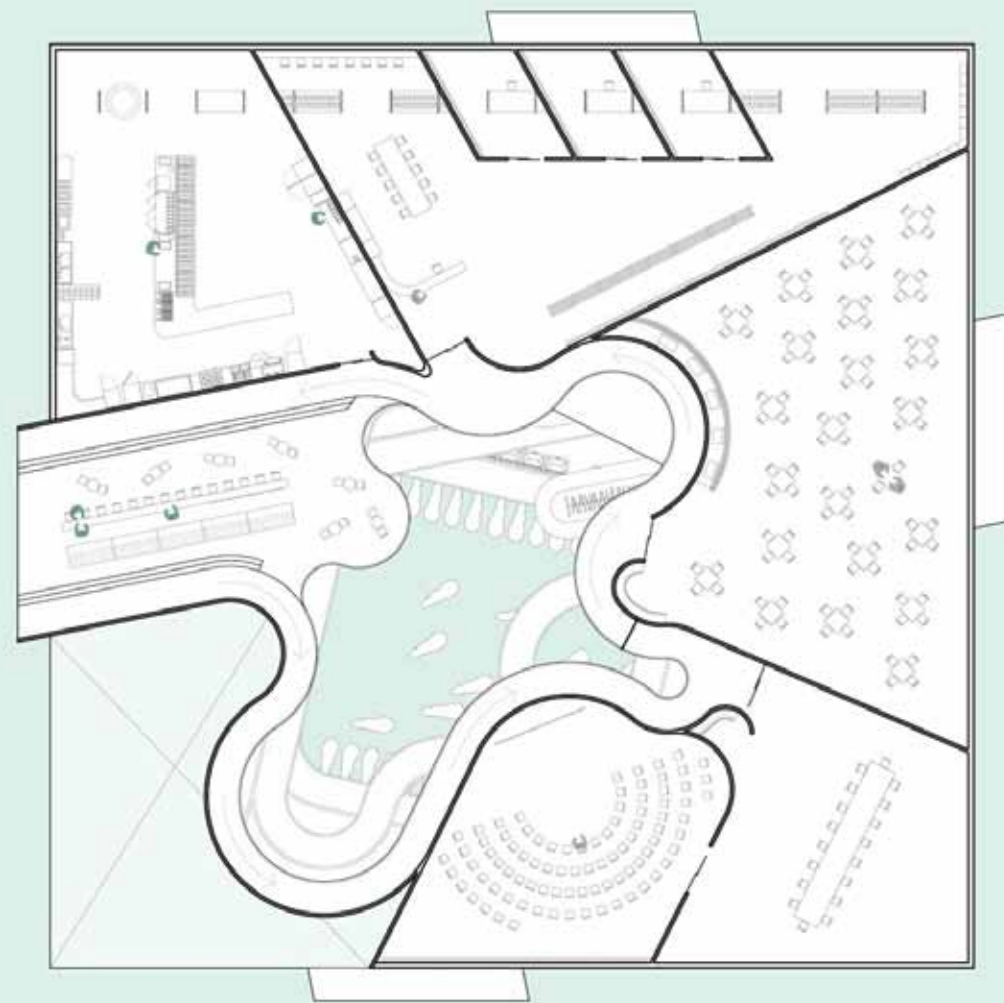
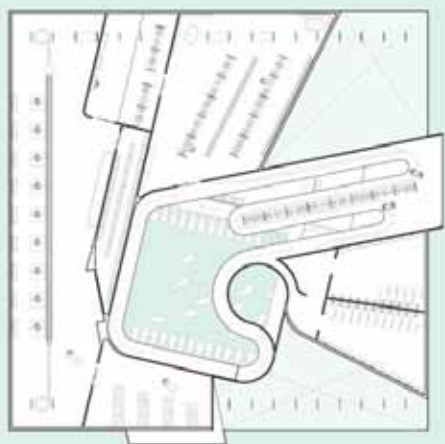
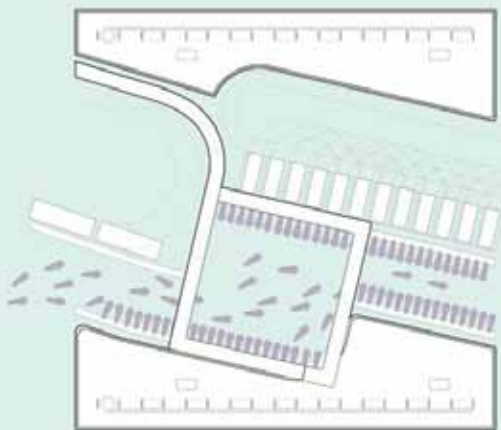
winner, honorable mention
nonarchitecture competition, MAKING

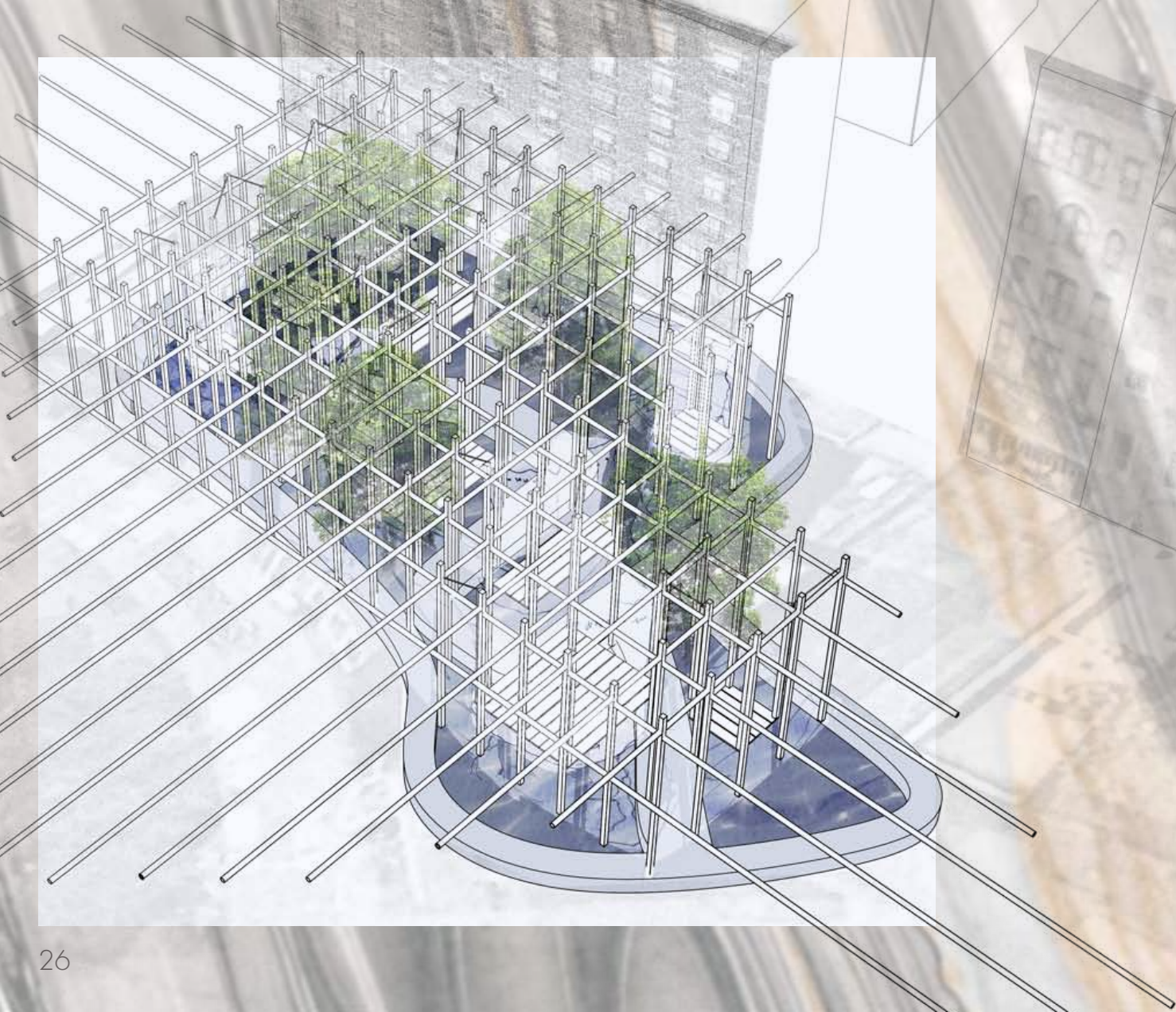
Green fingers penetrate the city grid, creating pockets of parkscape for man and beast to coexist and learn about each other. Proportions of green space are based on feed necessary for ideal daily proportions of beef consumption for adult humans. Model made of chipboard.





diagrammatic explanation of spatial and circulatory design based on 'comfortable' cow movement prescribed by temple grandin



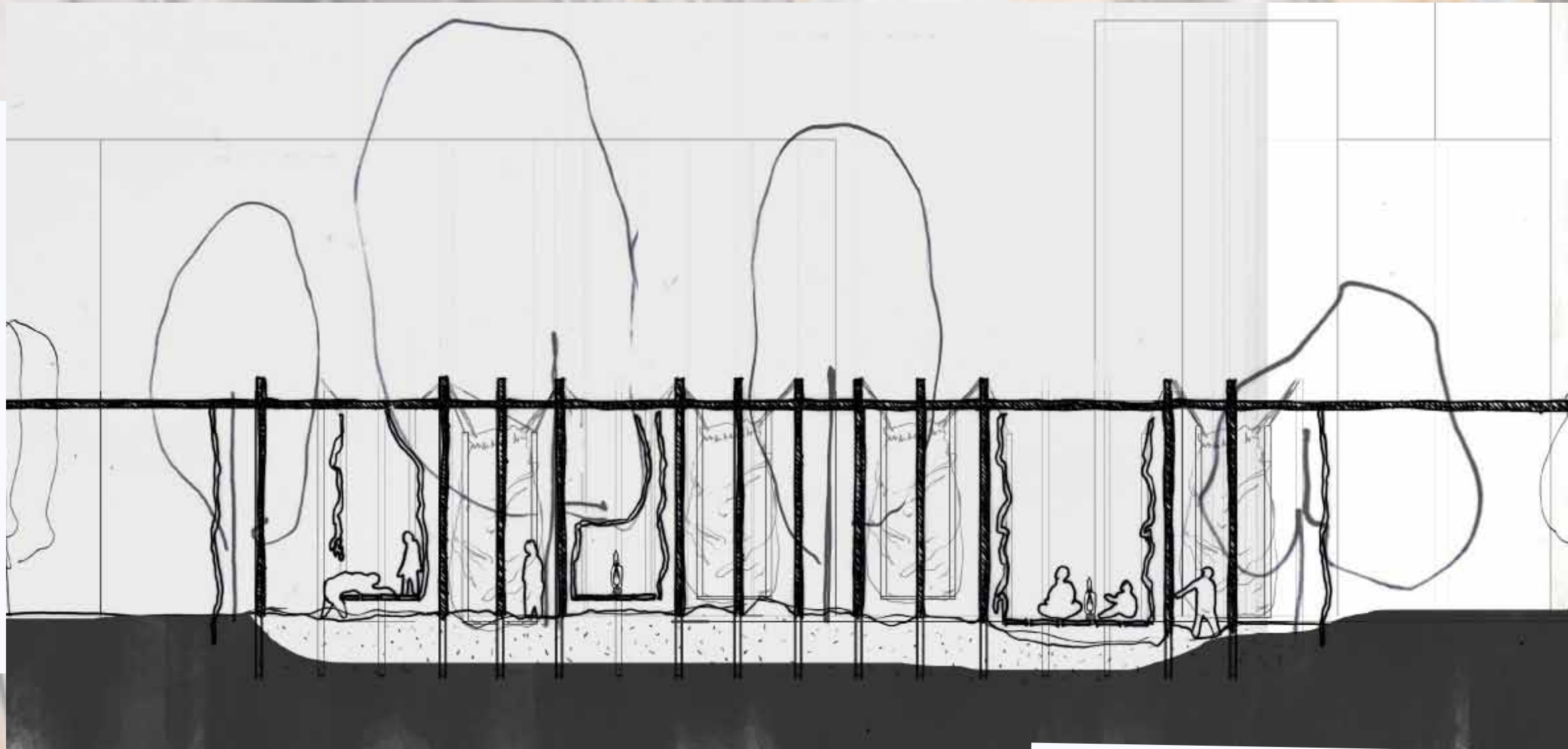


Perched upon this forgotten city fragment is both a voyeuristic spectator and maternal guardian to its surroundings. Reconciling the tensions between adult and child worlds, the resolution must be soft, protective, and evocative of youthful serendipity.

This is the **village chapel**. Taking cues from forts of yesteryear, the drapery, translucency, structure, and easiness become inherent in its form. It is deployed through simple means and years to embrace its surroundings. It cradles and isolates patrons. It longs to provide a comfort; the coo filtered indistinct whispers of city life in a delirious metropolis.

In its construction, it provides a brief veil of privacy within the greater urban context of Manhattan, while acknowledging neighboring sights, sounds, and sensations. Complete aloneness, blissful innocence, is impossible in a metropolis; but the message of comfort and meditation as a result of being a participant in the common collective, sharing in humanity.

angelaccarbone.com/hudsonandbleecker





early prototyping of individual cocoon



perspective shots of sanctuary interior and exterior

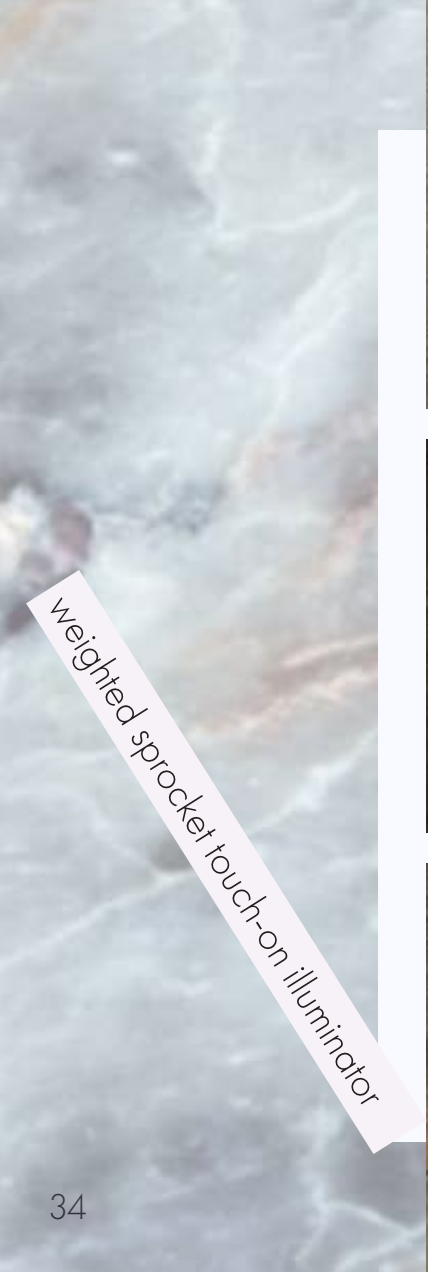


model, vampyroteuthis infernalis action

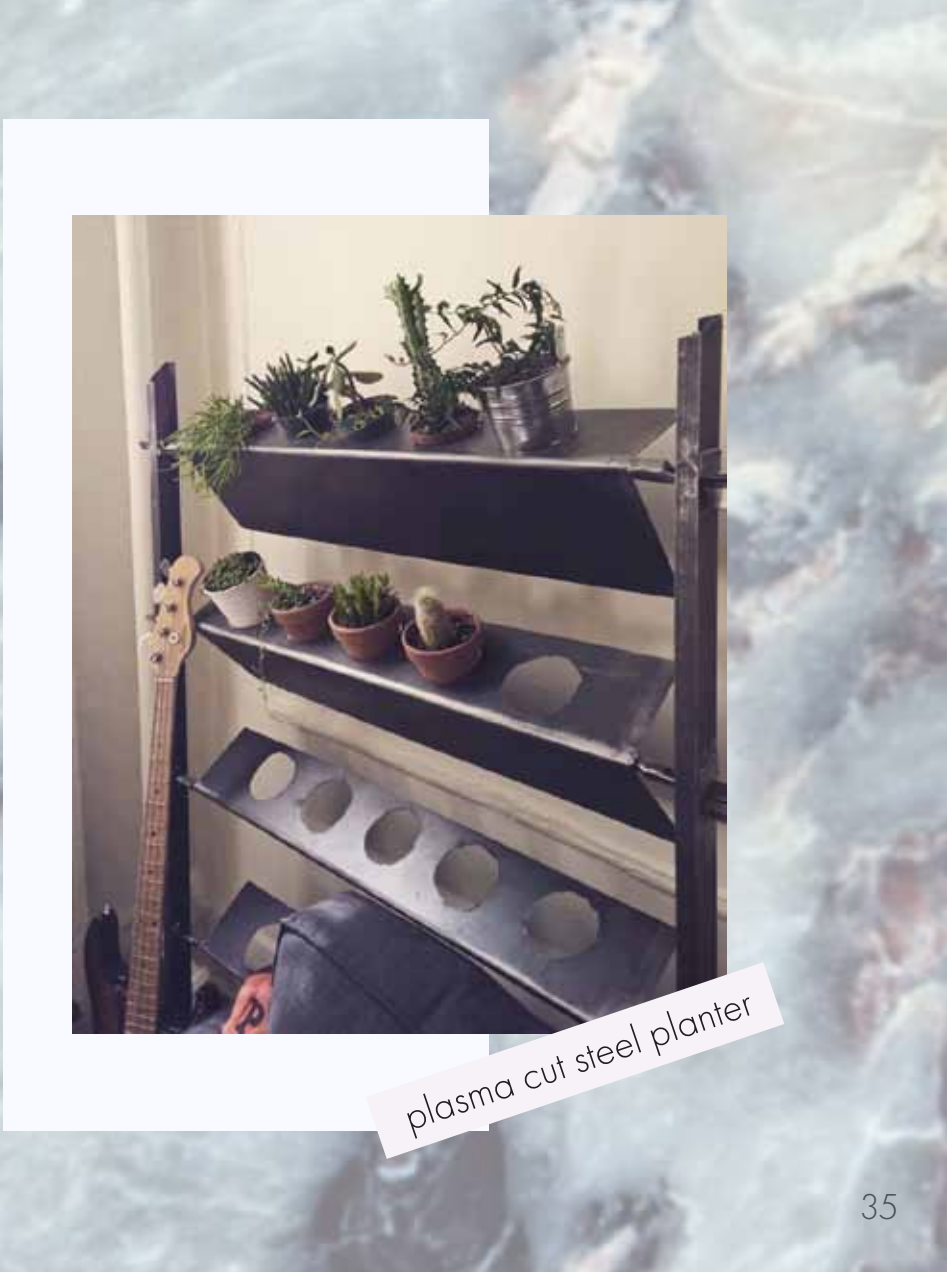
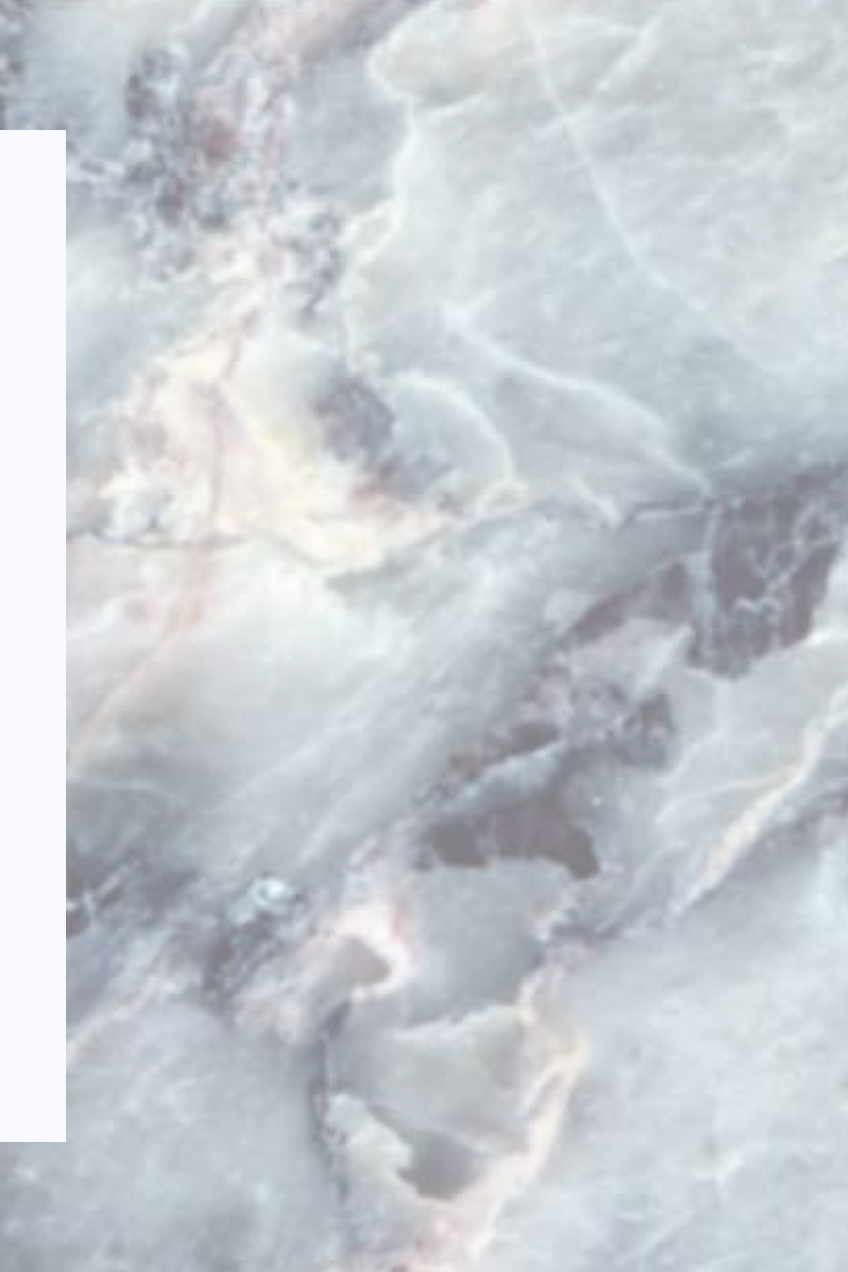


I have an endless fascination with metal objects. Hinges, pulls, turns, slides, chains. Some of my metal animals, furnishings, and oddities are pictured here. A full selection of such metal rarities are on my website.

angelaccarbonate.com/peruse



weighted sprocket touch-on illuminator



plasma cut steel planter



impaled book ends seated in snow



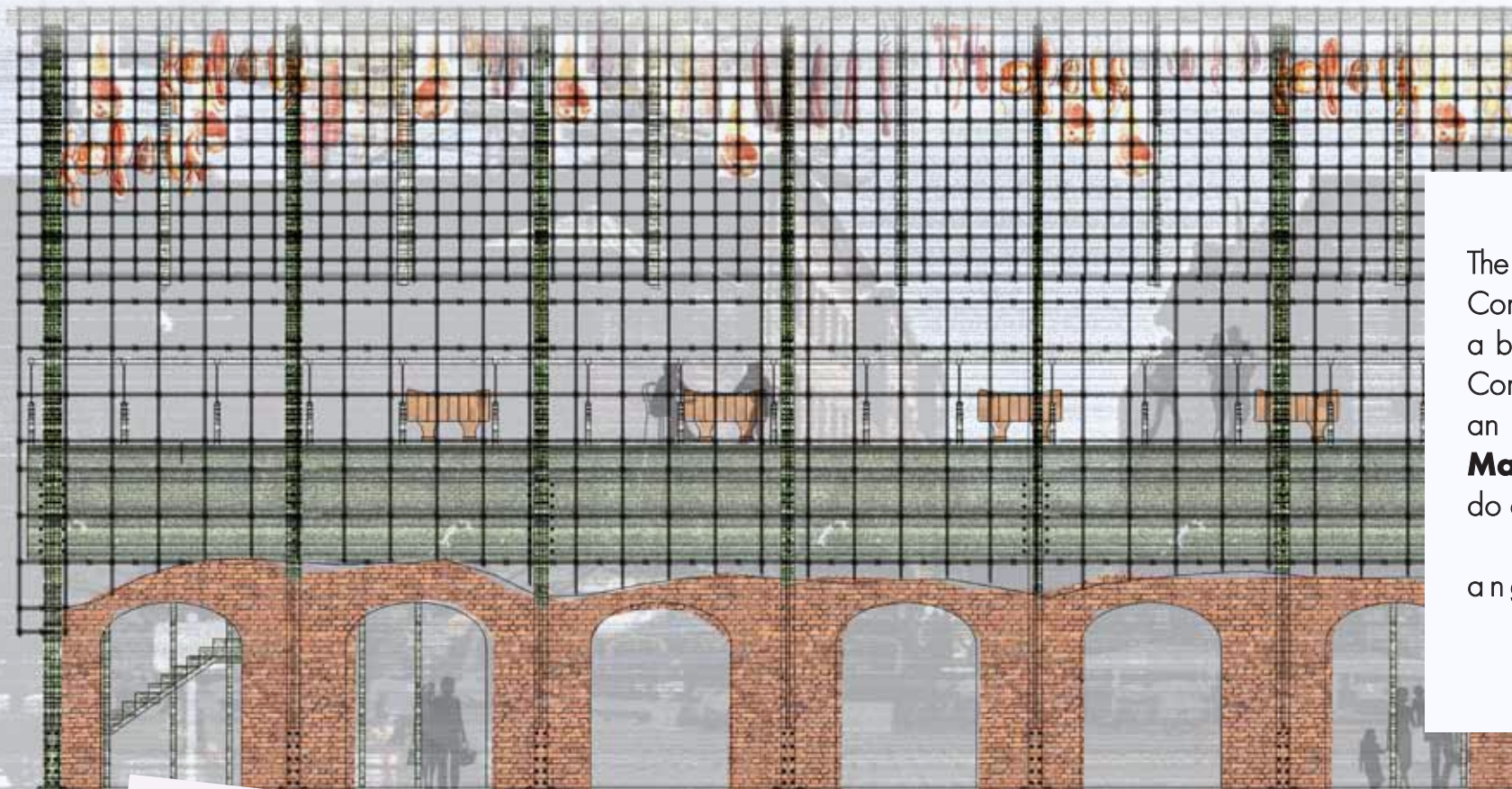
dynamic vanity shelf, hooked to wall



bookshelf with sliding surfaces



custom rusted speaker stands, solid core



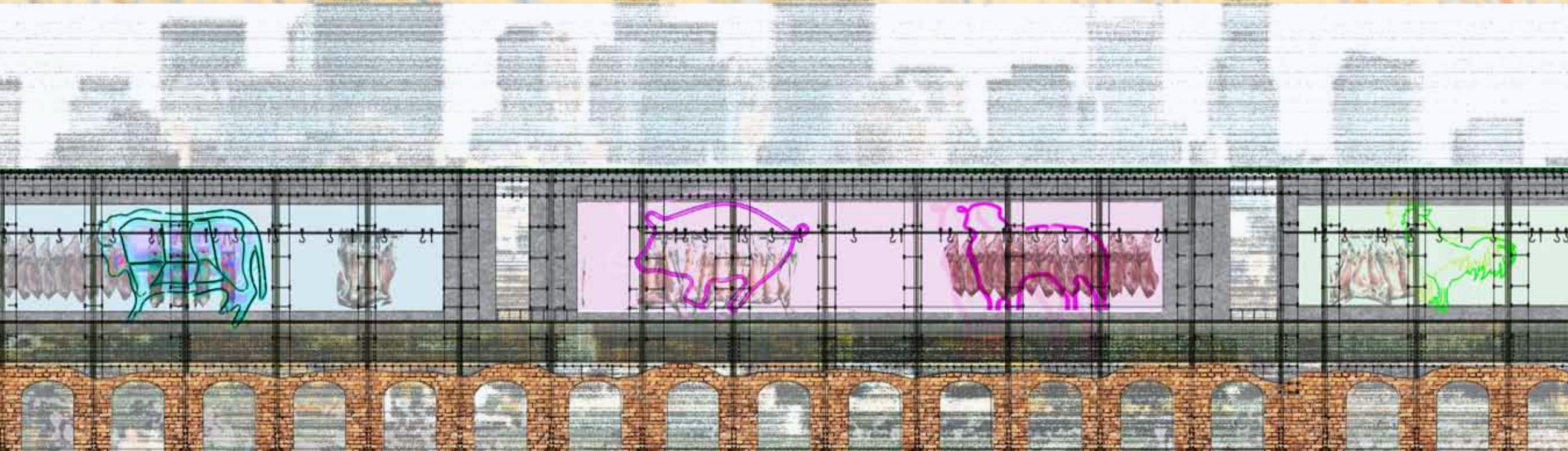
macellaio's dining hall butchery facilities

The Seipp Prize One Week Design Competition, 2nd Prize. A proposal for a butchery in the west end of Boston. Complete with walkthrough freezers, an eatery and a butcher room floor, **Macellaio** puts the gusto and brava-do of small business back into Boston.

angelaccarbone.com/seipp

winner, second prize
Cornell Seipp competition 2013

elevation detail of the refrigerator rooms





perspective of carlo mollino enjoying the marsh

When the walls on the Tevere were erected, the city of Rome was cut off from its long history and ritual of being a flooding city.

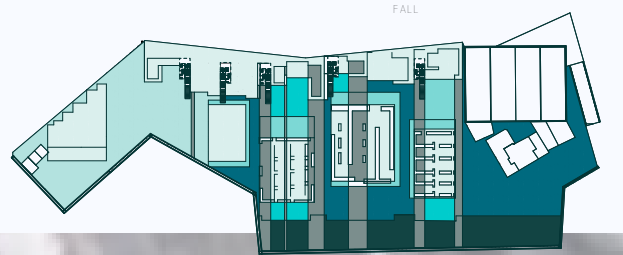
Ebb and Flow is a proposal for rejuvenation of the city and its periodic floods, reanimating and reinspiring the city's market arts district, Porta Portese.

An artificially flooded marshland of memory with seasonal ponds which reflect light, house plants, heat and cool, and facilitate program based on their periodic changes in water levels. It is not only a driver of movement but also a sensory stimulus. Thick habitable walls house galleries, exhibition and retail, while out-stretched staircases slice through the striated site and bring designers to the fablabs and offices which govern from above and allow goods to flow down to the people below.

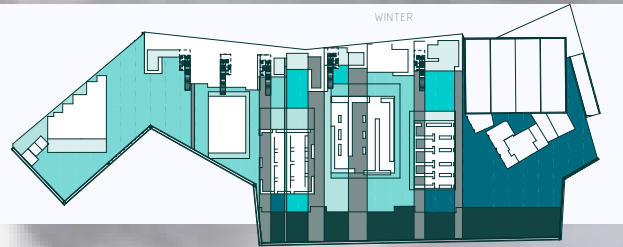
angelaccarbone.com/rome



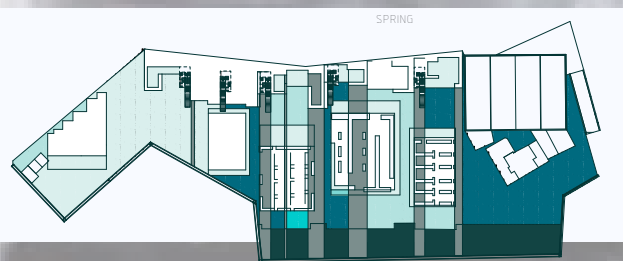
elevation of studios and galleries



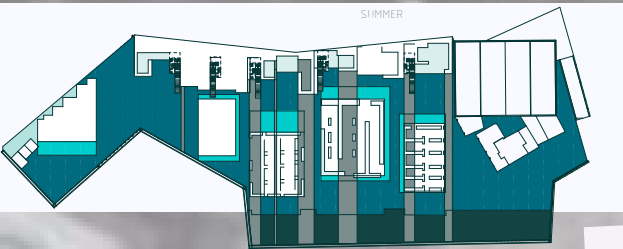
FALL









WINTER



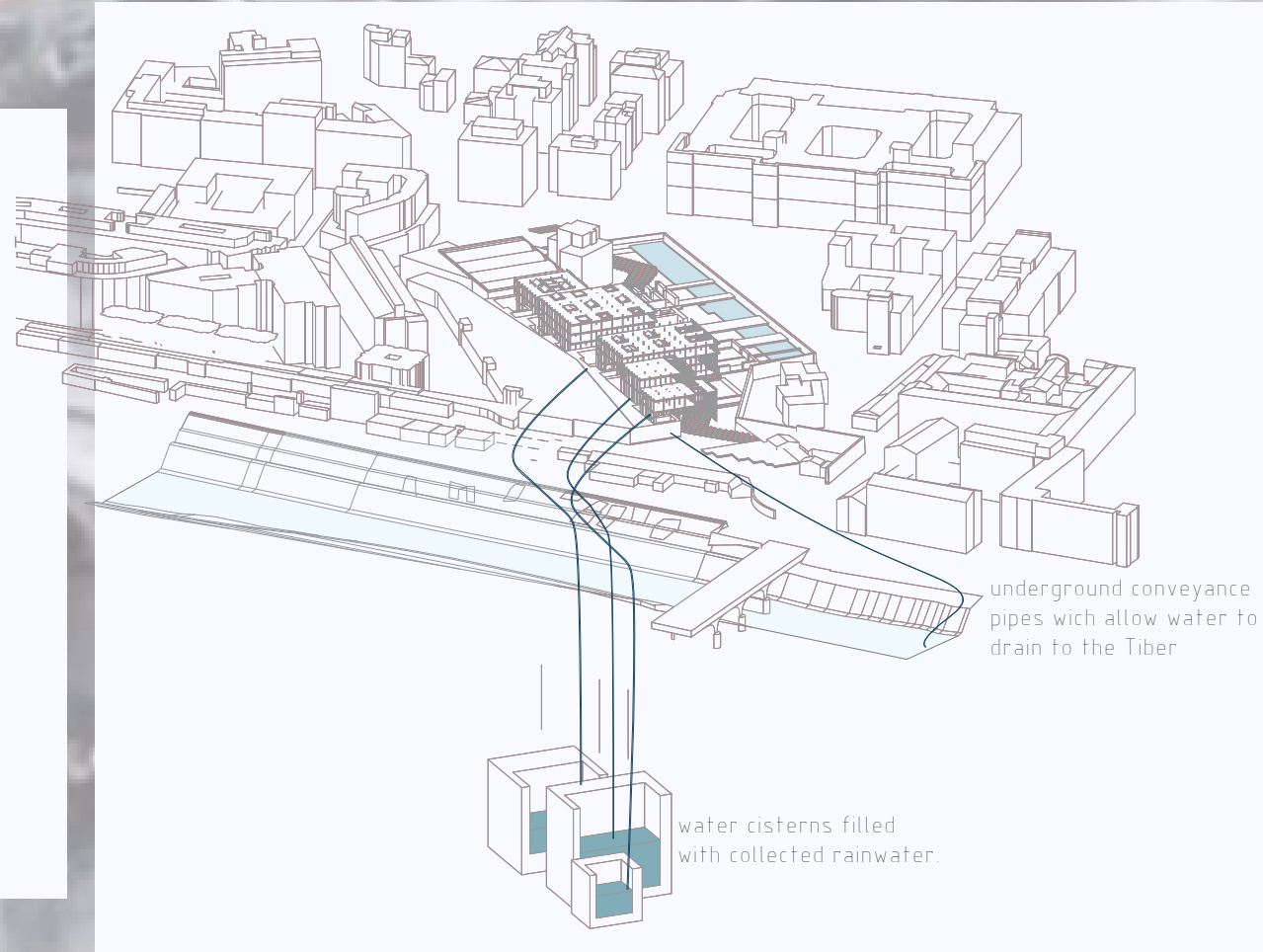
SPRING

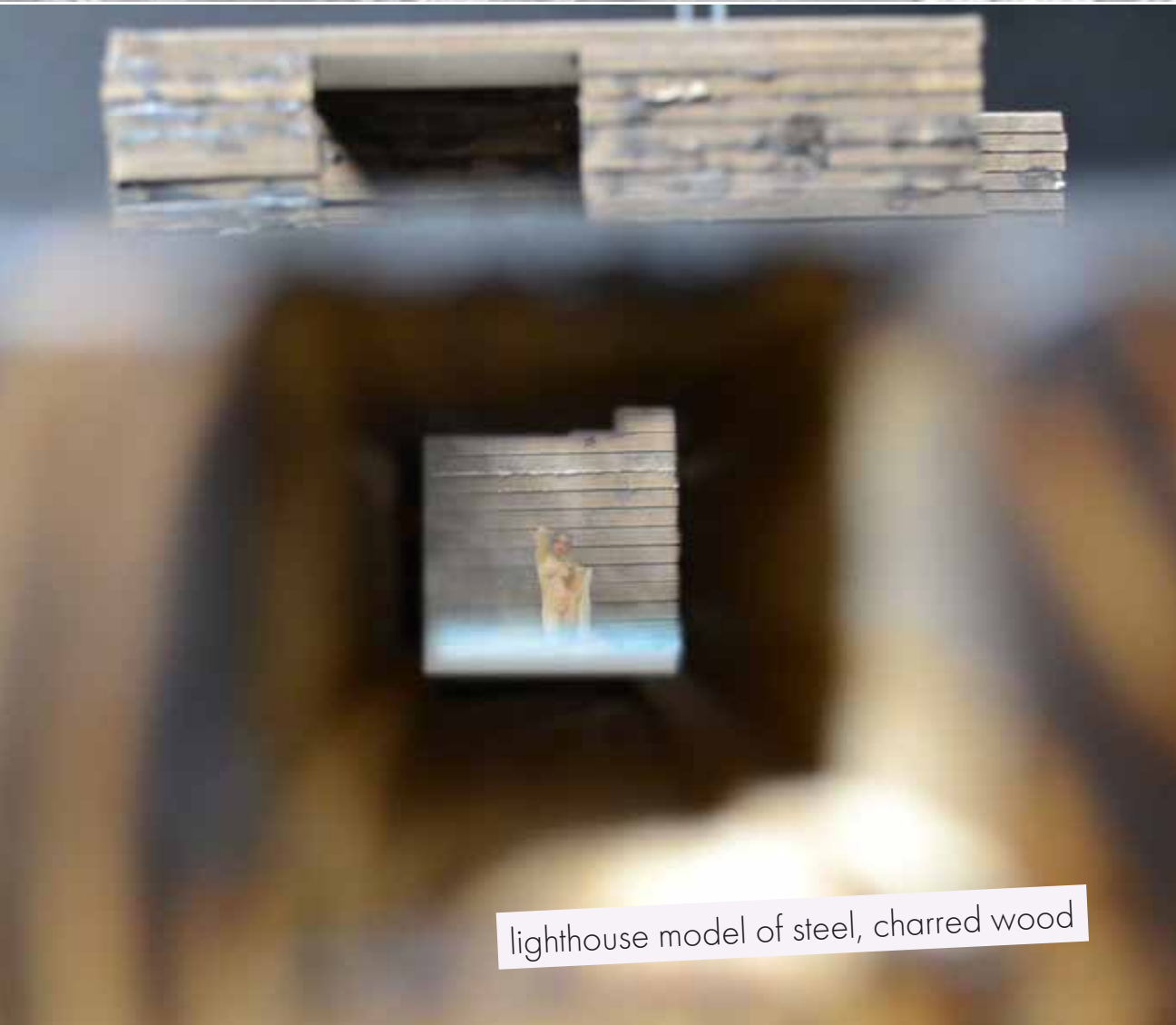


SUMMER

-  paved surface above marsh
-  4 centimeters
-  2 centimeters
-  6 millimeters
-  1 millimeter
-  less than 1 millimeter

GEOHERMAL SYSTEM



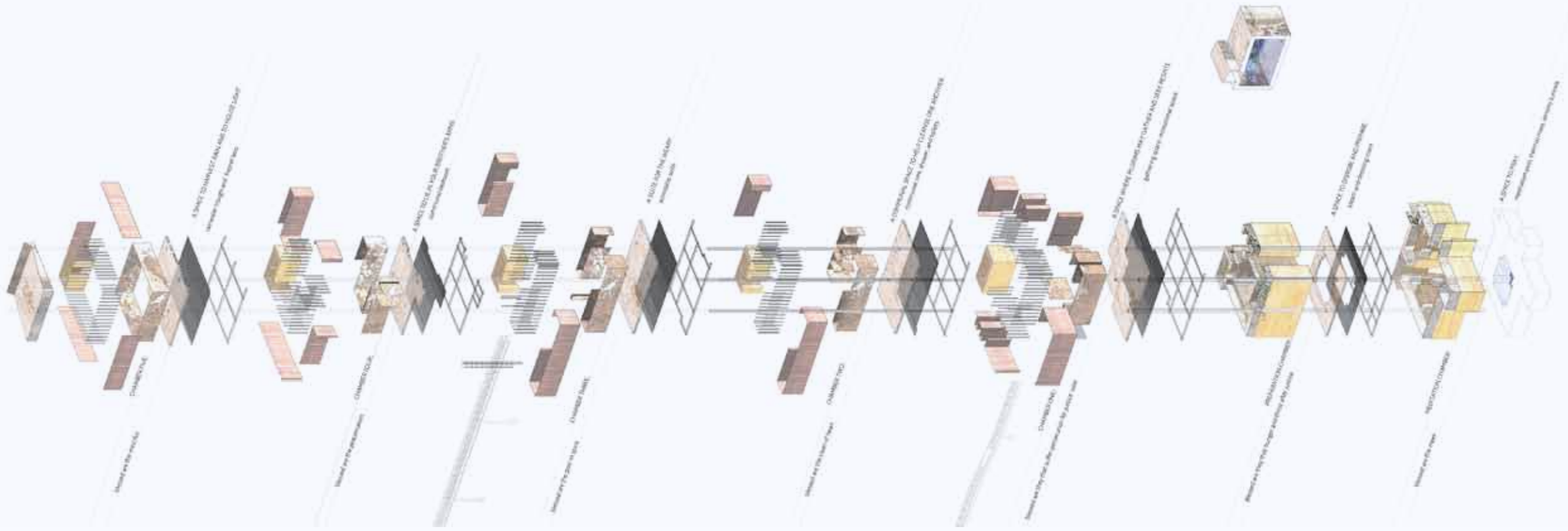


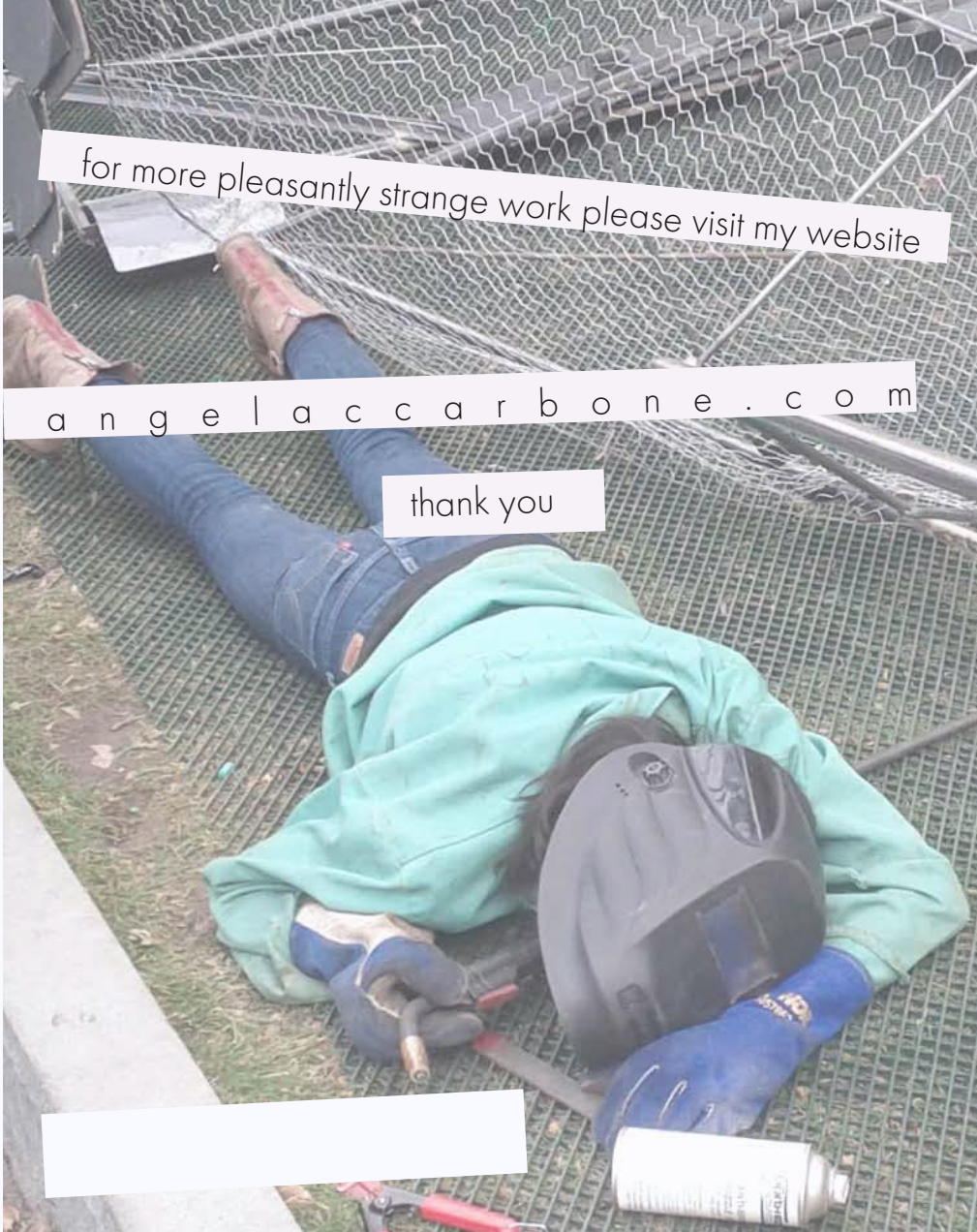
lighthouse model of steel, charred wood

A **Lighthouse** which sits on the coast of Spain in Laxe, a site traditionally visited by religious pilgrims. As an ode to visitors past, The Lighthouse is a hospitality center which doubles as a spiritual meditation chamber where both visitors past and present can find solace in the sights, sounds and atmosphere of the coast of the dead.

angelaccarbone.com/laxe

exploded axon explaining construction





for more pleasantly strange work please visit my website

a n g e l a c c a r b o n e . c o m

thank you

[Redacted]



angelaccarbonate.com/peruse
5 1 6 . 5 5 1 . 0 2 4 8

