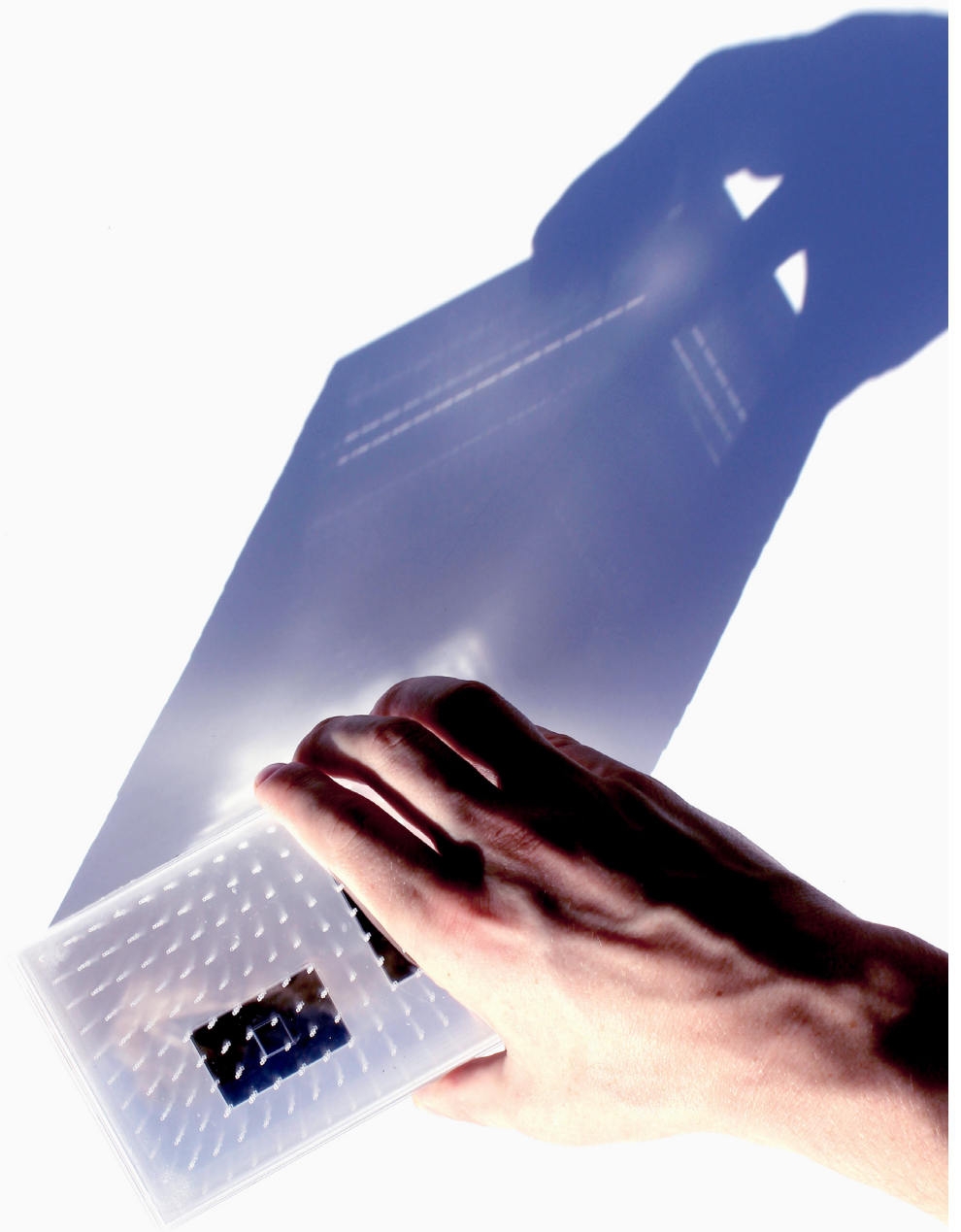


Conor Barry | Design Portfolio

Contents

- 2 Geogje Pier
- 7 Brooklyn Library
- 11 Roccascalegna Observatory
- 15 Newtown Creek
- 19 Bronx Housing



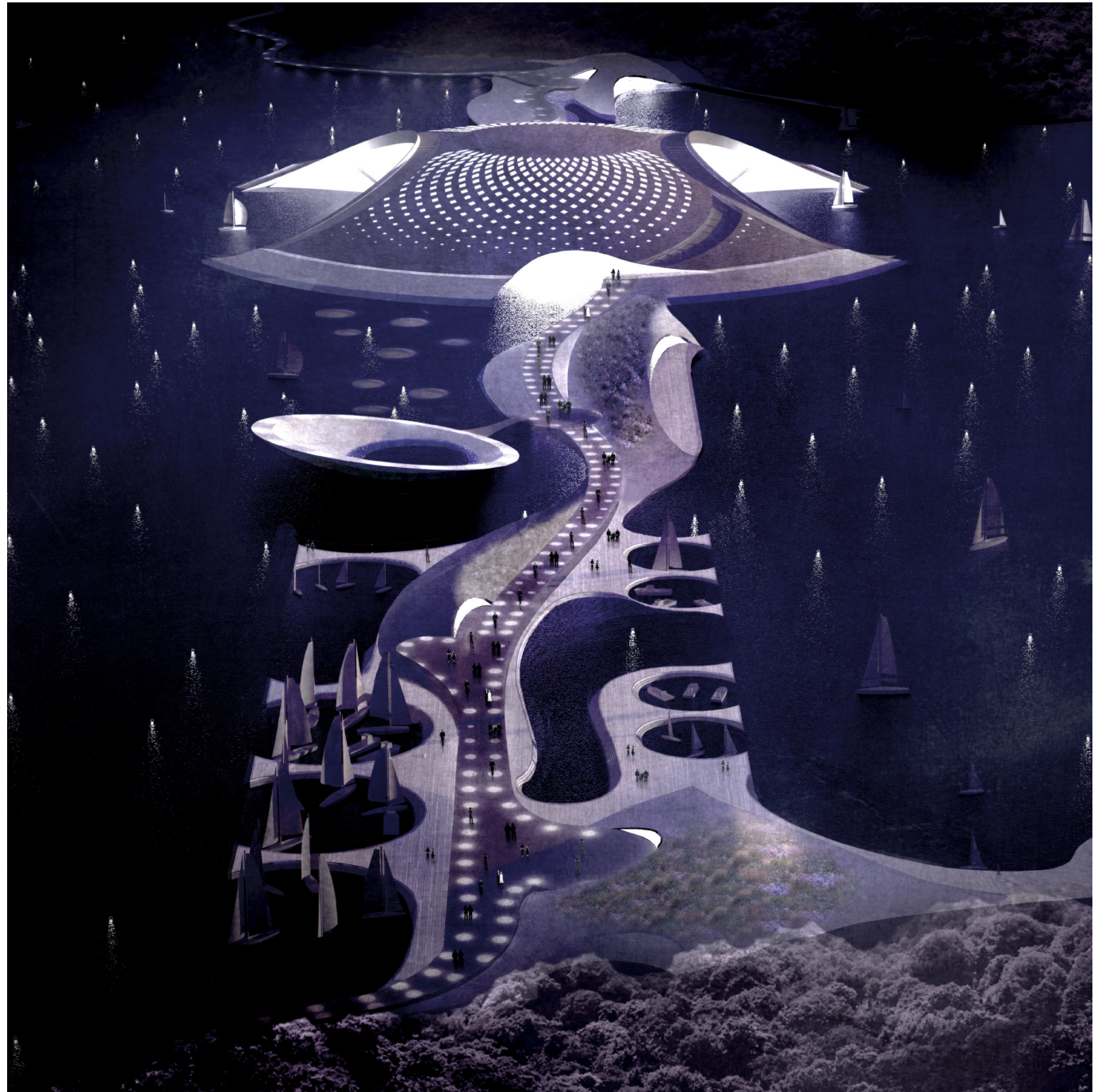
Geoje Pier

The proposal is a new pier typology that aims to reduce the underused space of a traditional pier by incorporating a wider variety of programs for longer periods throughout the year. The scheme was designed with three primary functions in mind: Competitive Sailing Venue, Center for the Performing Arts and Public Amenity for the People of Geoje.

The goal is to embed the architecture into the marine environment. The pier acts as a bridge over the Chilcheon-do Strait and lives in the space between the tides. It connects two unused peninsulas on either side of the scenic channel to create a publicly accessible crossing that connects two urban centers. Tidal flux continuously molds the spaces on the pier's surface and influences the activities that can take place, establishing an ever-changing network of programmatic density.

Large open spaces are provided to accommodate the temporary structures of international sailing events, which then provide a vibrant public amenity for the people of Geoje during quieter periods. The interior spaces beneath the pier include a dance studio, auditorium, visitor's center, yacht club, cruise terminal and a marine equipment facility. A domed forum anchors the scheme and provides a multi-function community space to rejuvenate the rich maritime identity of the area.

Professor | Jinhee Park
Location | Geoje, South Korea
Date | Fall 2018

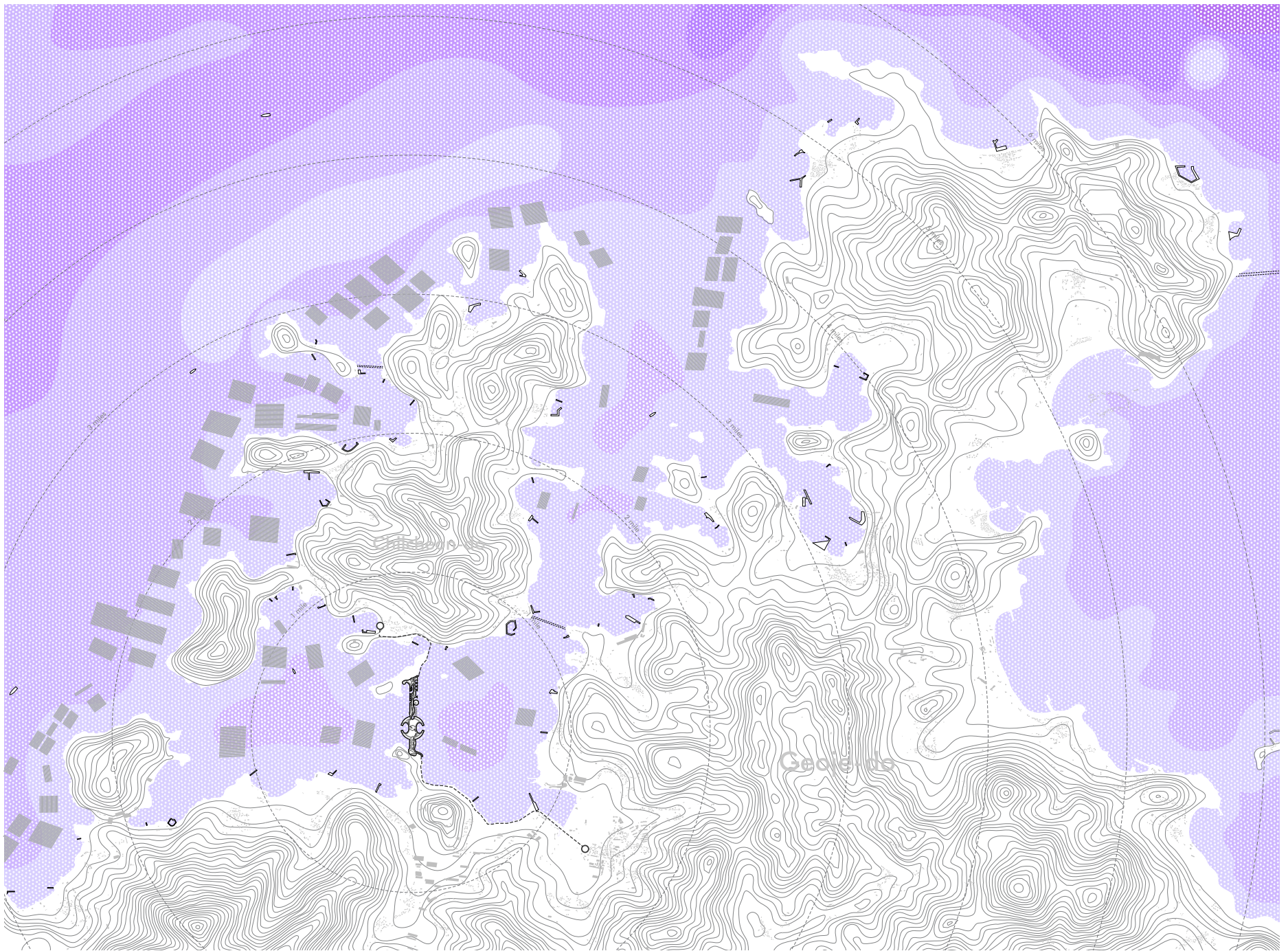


GEOJE PIER

GEOJE PIER

GEOJE PIER

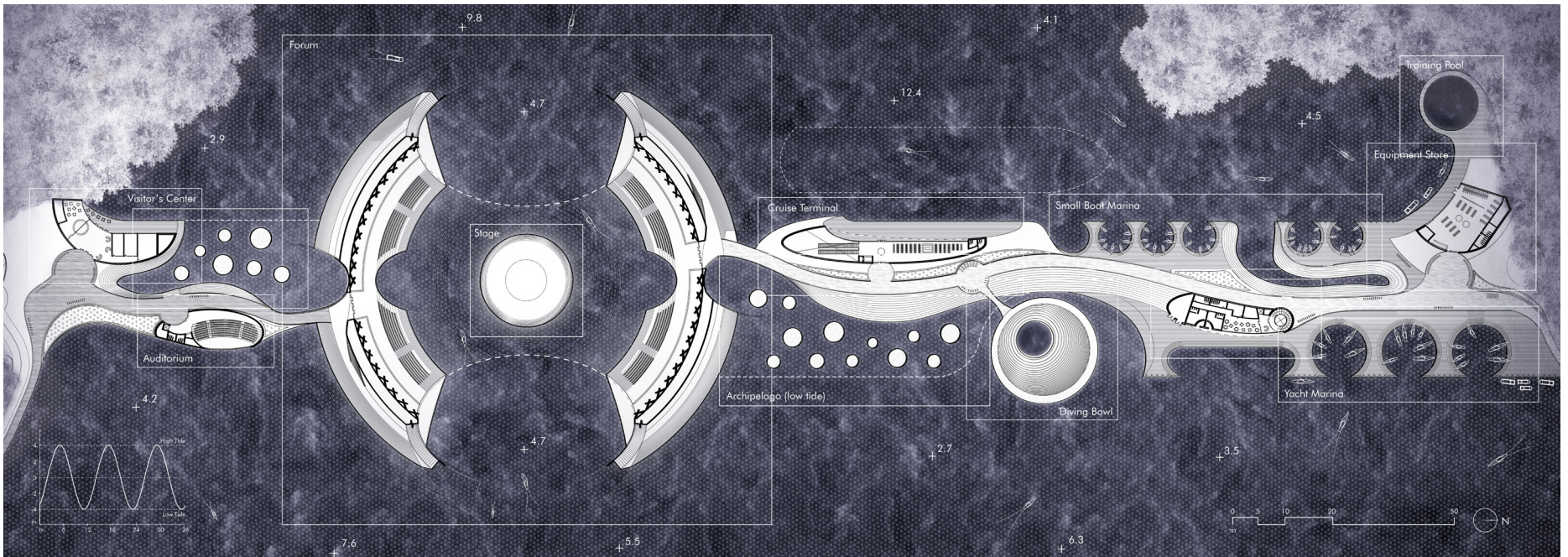
GEOJE PIER



GEOJE PIER

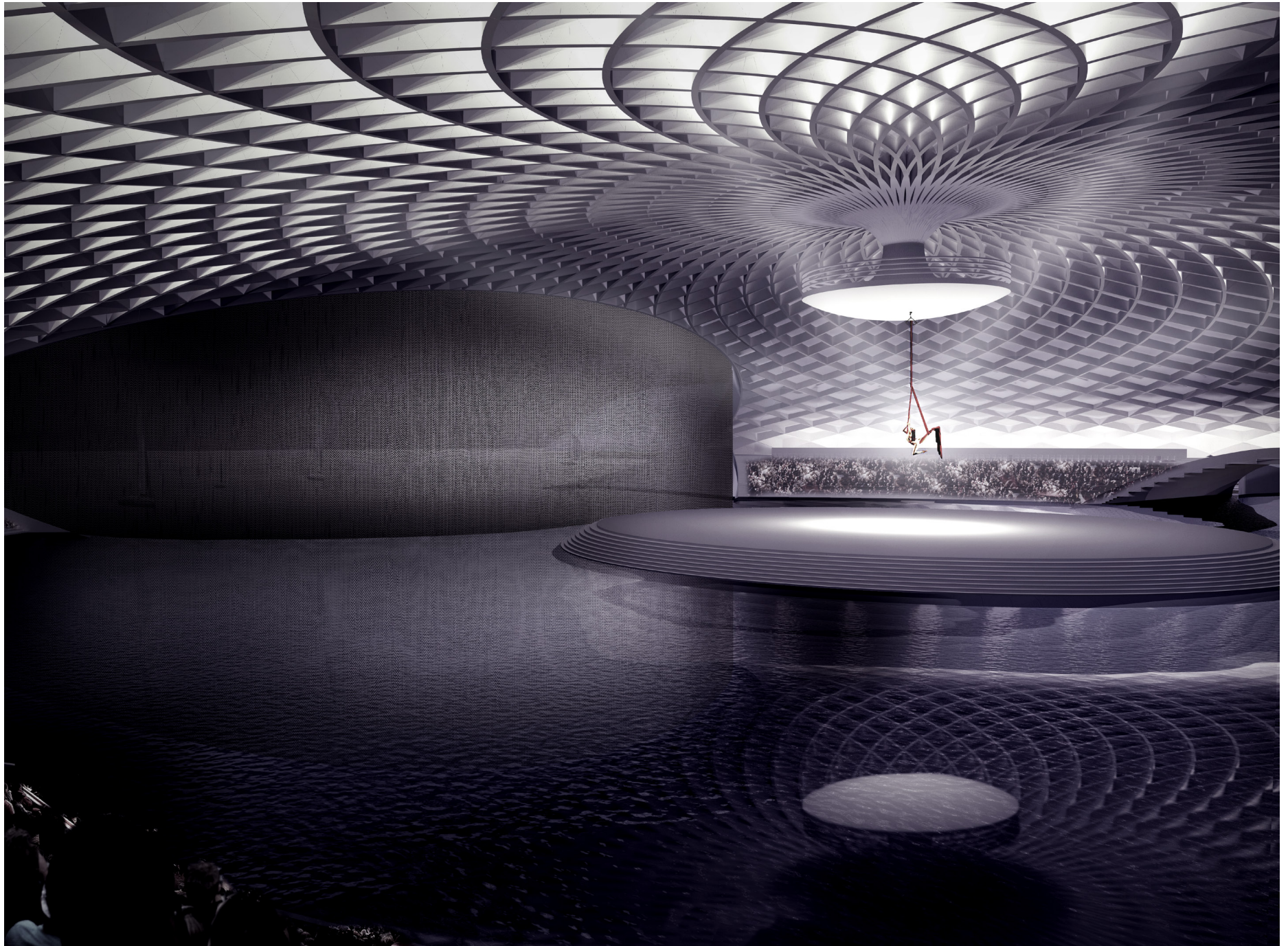


GEOJE PIER



View from Water | West View
(above)

Floor Plan | First Floor
(below)



GEOJE PIER

GEOJE PIER



GEOJE PIER

GEOJE PIER

View from Water | Close Up

GEOJE PIER

GEOJE PIER

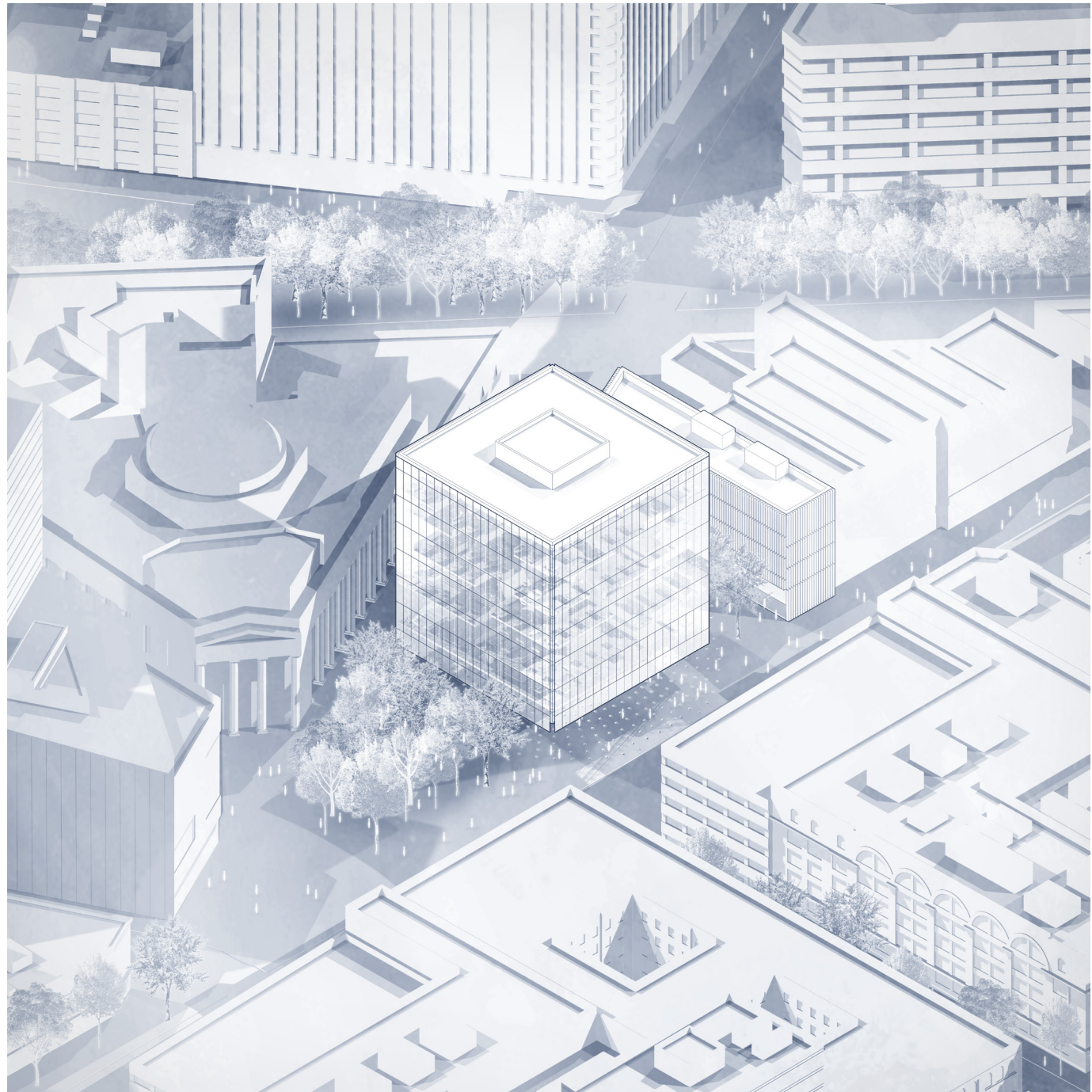
Brooklyn Library

This project re-imagines the role of the public library in contemporary urban life. At a moment when libraries are perceived to be under threat from a shrinking public realm on one side and digitization on the other, this proposal creates a civic space for the circulation of knowledge in all media.

All public program, including a lounge, computer labs, maker space and workspace is housed in a glass cube that appears to hover above the public plaza adjacent to Fulton Street. This volume is separated from the existing city block and placed in the center of the plaza at the intersection of three major thoroughfares. Visitors can approach from all sides and ascend into the cube from below - an entry strategy designed to convey the openness and transparency of the project as well as the importance of the library's role as a place of higher learning in modern society. All other program such as office space, administration and meeting rooms are located in a second building that knits into the existing urban fabric and is connected to the main library on an underground level.

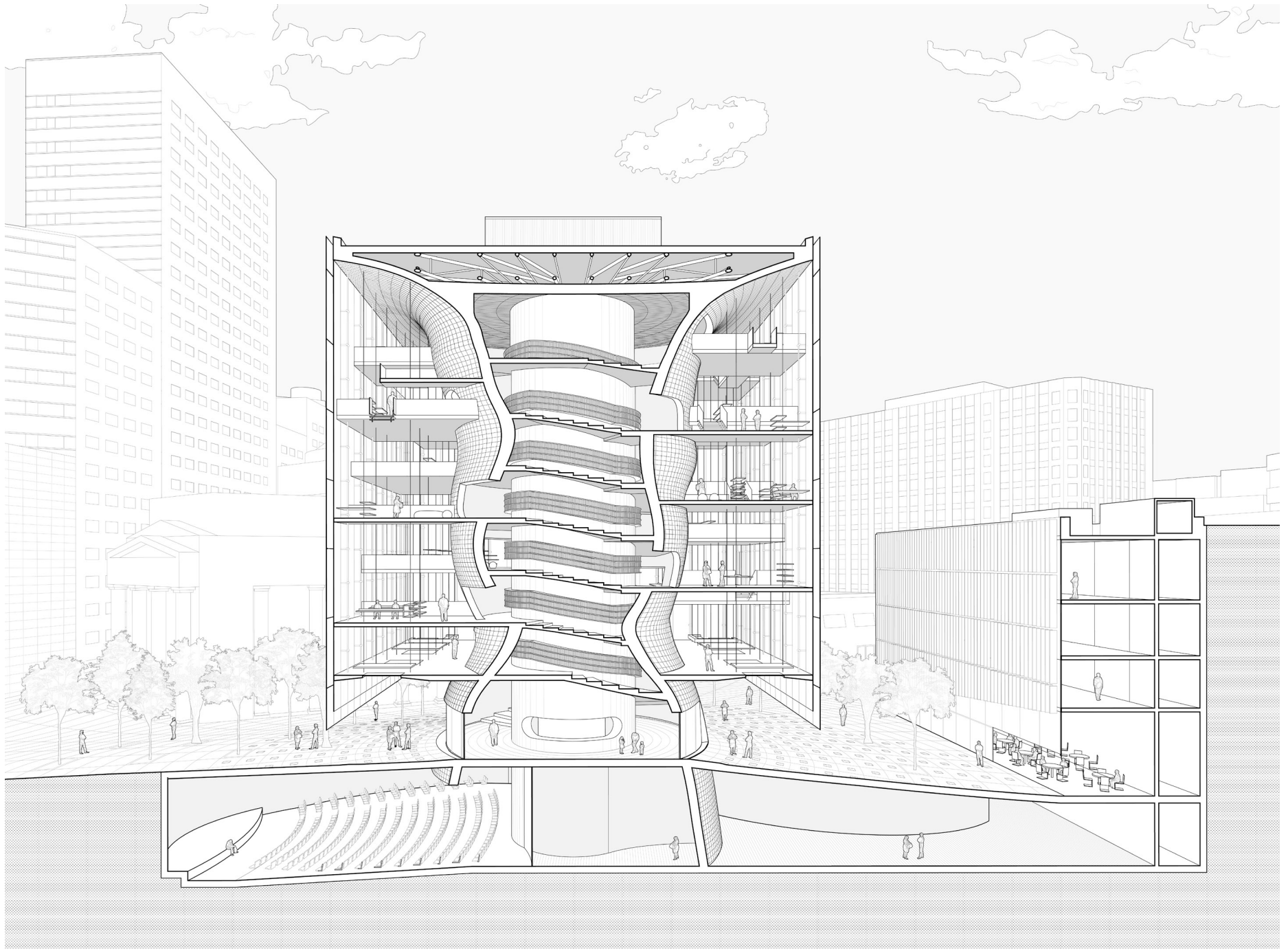
The cube is supported by a sculptural core that provides access to each level. Every floor plate is hung from a system of steel trusses above, eliminating the need for columns at the ground floor. Tables and book shelves are also hung so that no furniture touches the ground - reinforcing the concept of floating throughout the building.

Professor | Gordon Kipping
Location | Brooklyn, New York
Date | Spring 2017



BROOKLYN LIBRARY

BROOKLYN LIBRARY



BROOKLYN LIBRARY

BROOKLYN LIBRARY





Roccascalegna Observatory

This project proposes to integrate an observatory resort into the existing fabric of a medieval castle while creating a spectacular visual display in conversation with the stars overhead.

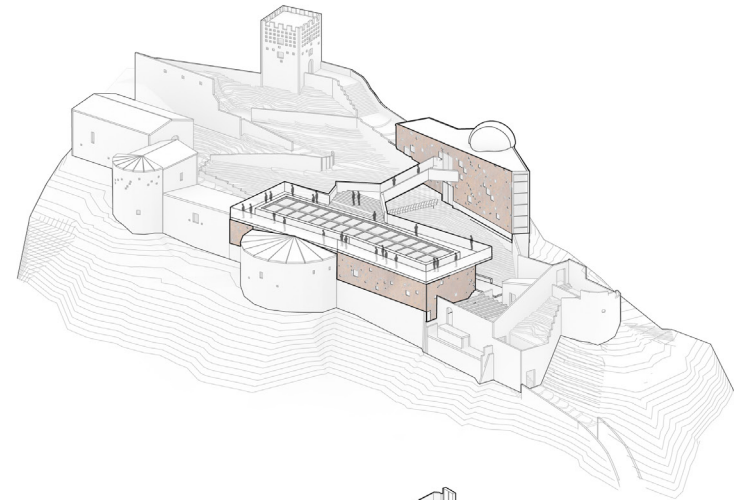
The entire site is transformed into a hillside constellation. A flood of stars spills down the hill from the fortress above. To create this effect small perforations are cut into the corten steel cladding that surrounds each proposed structure. Light from inside the cabins is projected into the night, creating a stunning display visible from miles around. This earthbound constellation establishes a symbolic dialogue between the resort and the stars above.

To ensure minimal disturbance of the site both the lodgings and the pathways are nestled into the existing shape of the hill. Small strip foundations and raised pathways also reduce the building's contact with the ground and minimize the need for excavation. Star-gazing visitors are invited to ascend to the didactic observatory and restaurant, which are carefully knitted into the existing fabric of the fortress. An outdoor sky-walk on the roof of the restaurant also provides visitors with the opportunity to experience breathtaking views of the Italian mountains by day and the glistening heavens by night.

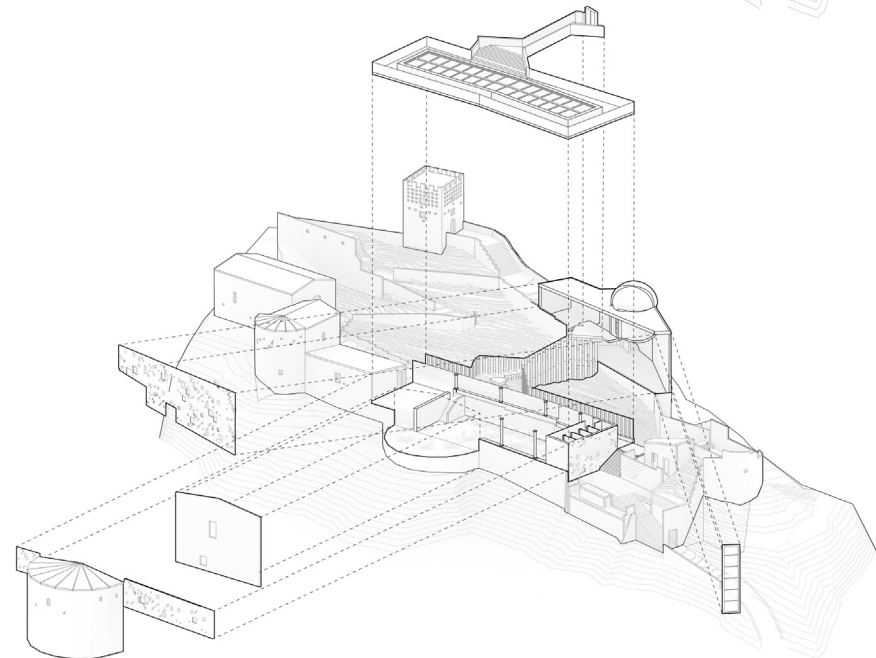
Project Type | Competition
Location | Roccascalegna, Italy
Date | Summer 2017



ROCCASCALEGNA OBSERVATORY

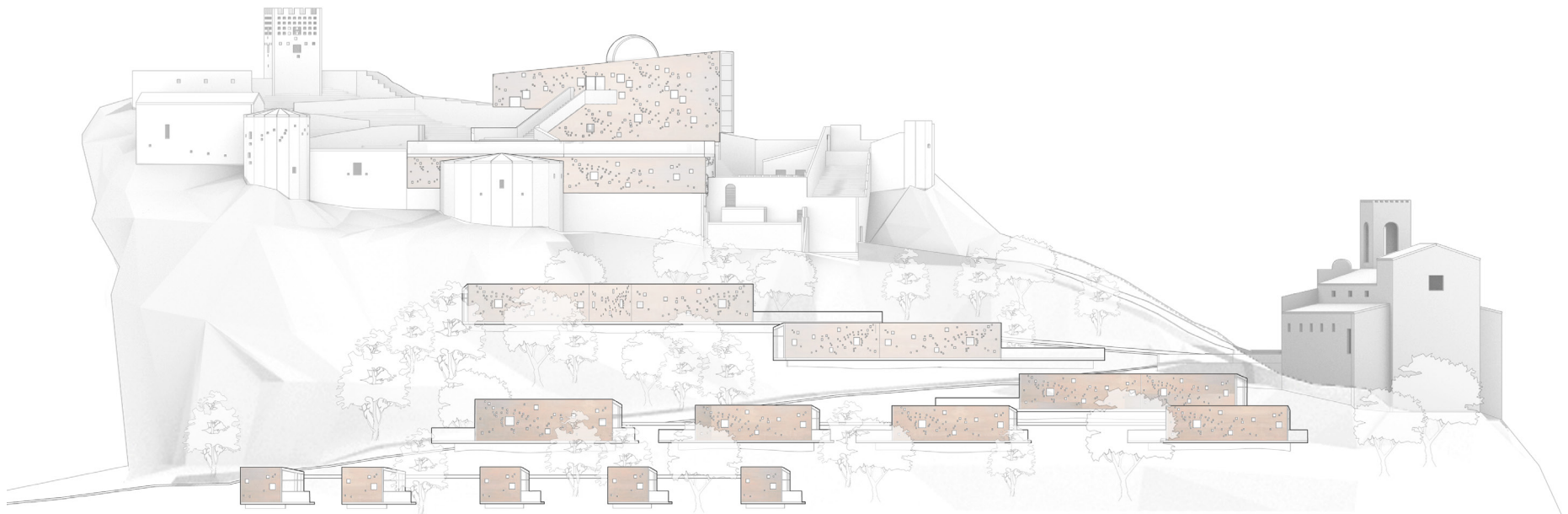
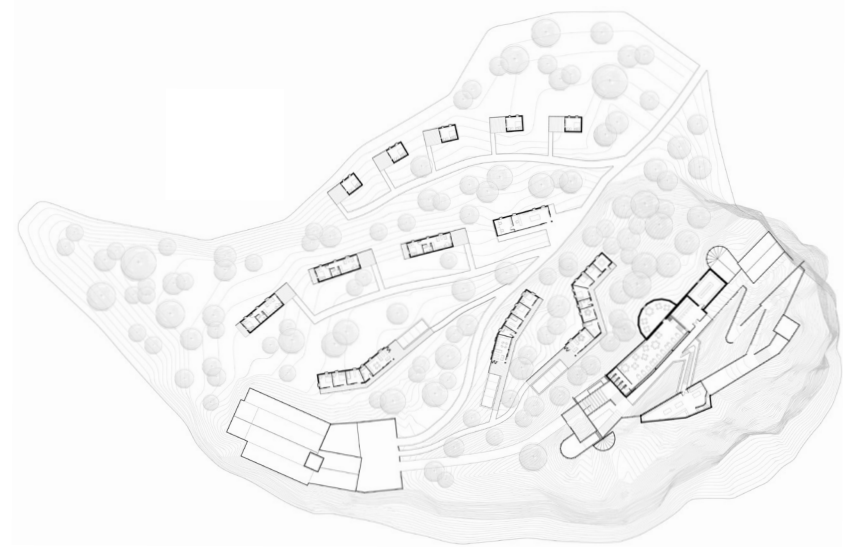


ROCCASCALEGNA OBSERVATORY



ROCCASCALEGNA OBSERVATORY

ROCCASCALEGNA OBSERVATORY



Site Elevation | Accommodation + Observatory
(below)

Site Plan | Accommodation + Observatory
(above)

ROCCASCALEGNA OBSERVATORY



ROCCASCALEGNA OBSERVATORY

Newtown Creek

This project aims to introduce a new type of urban infrastructure that re-imagines the city's relationship with its environment, particularly with rain and water.

We were interested in creating a soft infrastructure that acts more like an ecology, one that proposed a more innovative approach to urban resiliency. Our intervention is a research and development center for this new type of urban infrastructure, which also acts as a publicly accessible educational platform for demonstrating the more harmonious and receptive attitude towards rain, water and temperature that it aims to proliferate.

This system acts as a machine that comes alive and transforms under heavy rainfall, creating one of the few places in the city that becomes more enjoyable when it rains. Establishing a single circulation system for the water it collects, the system reduces CSO pollution in Newtown creek by absorbing and redistributing water before it enters the sewer system.

Adapting cities to increasingly volatile weather conditions is not only a technical problem to be solved, but also a cultural barrier to be overcome. Our proposal addresses this issue by providing a dedicated center to both develop and disseminate the new technologies and, more importantly, the new attitudes towards weather and environment necessary for cities to adapt to an ever-changing world.

Professor | Tei Carpenter
Partner | Zeynep Ugur
Location | Newtown Creek, BK
Date | Spring 2018

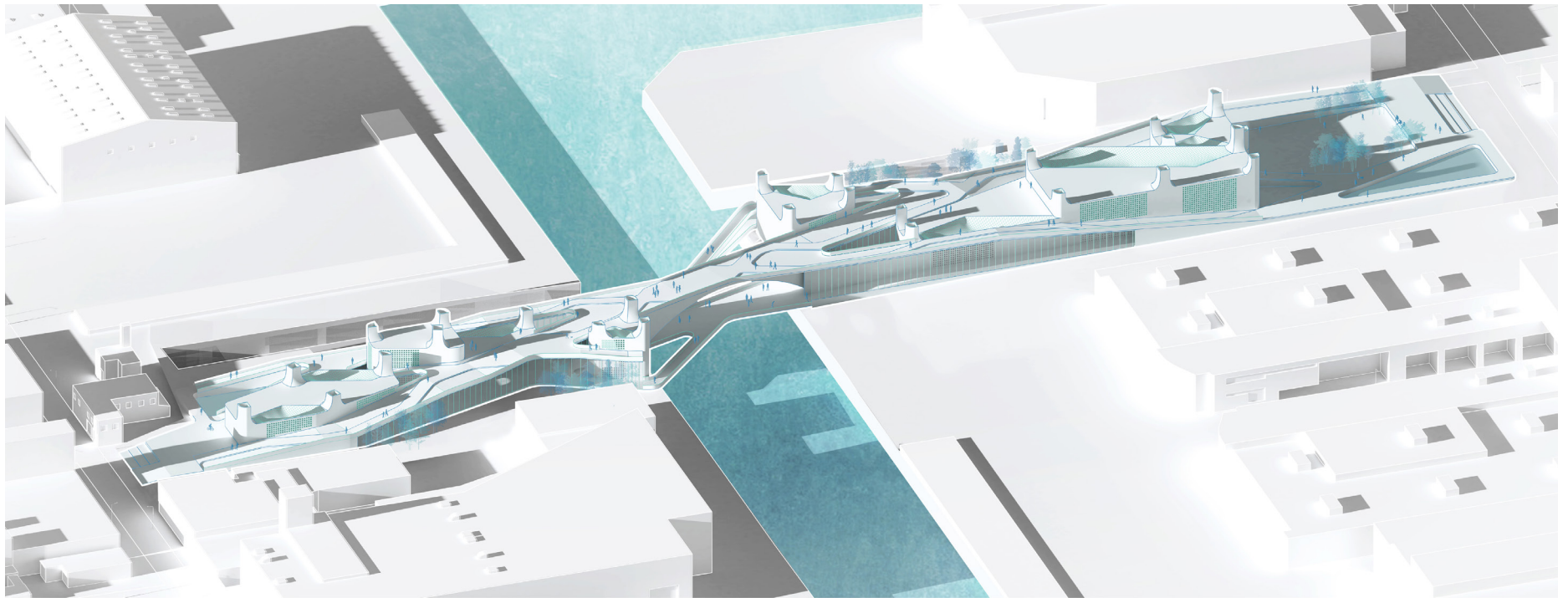
*all drawings shown were completed by me



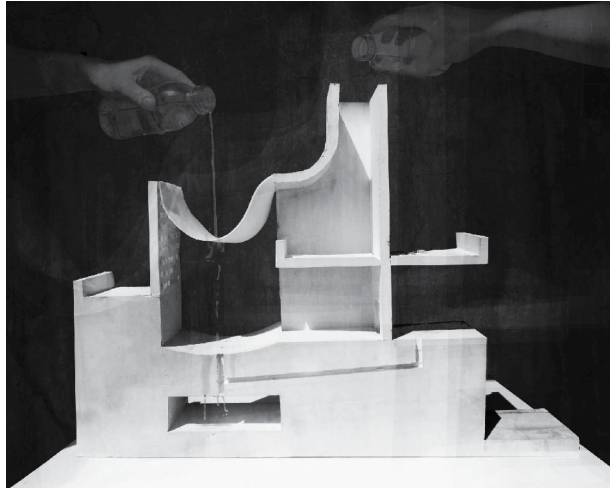
NEWTOWN CREEK

NEWTOWN CREEK

NEWTOWN CREEK

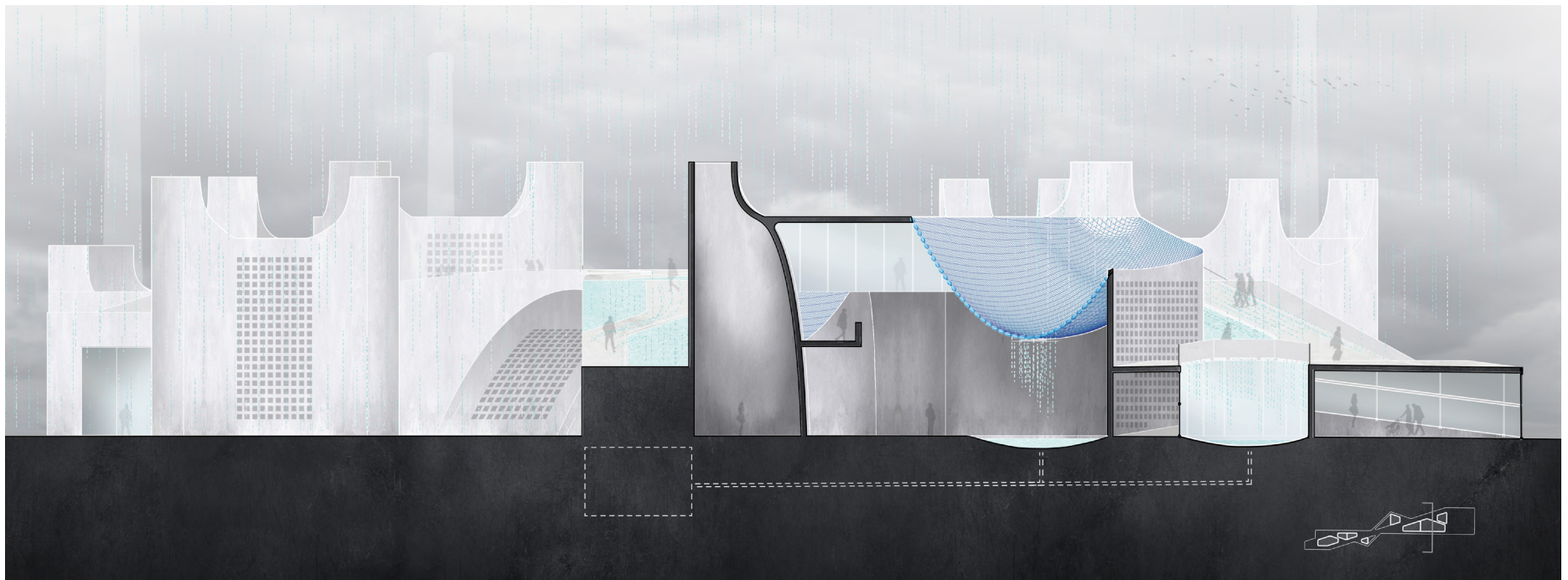


NEWTOWN CREEK



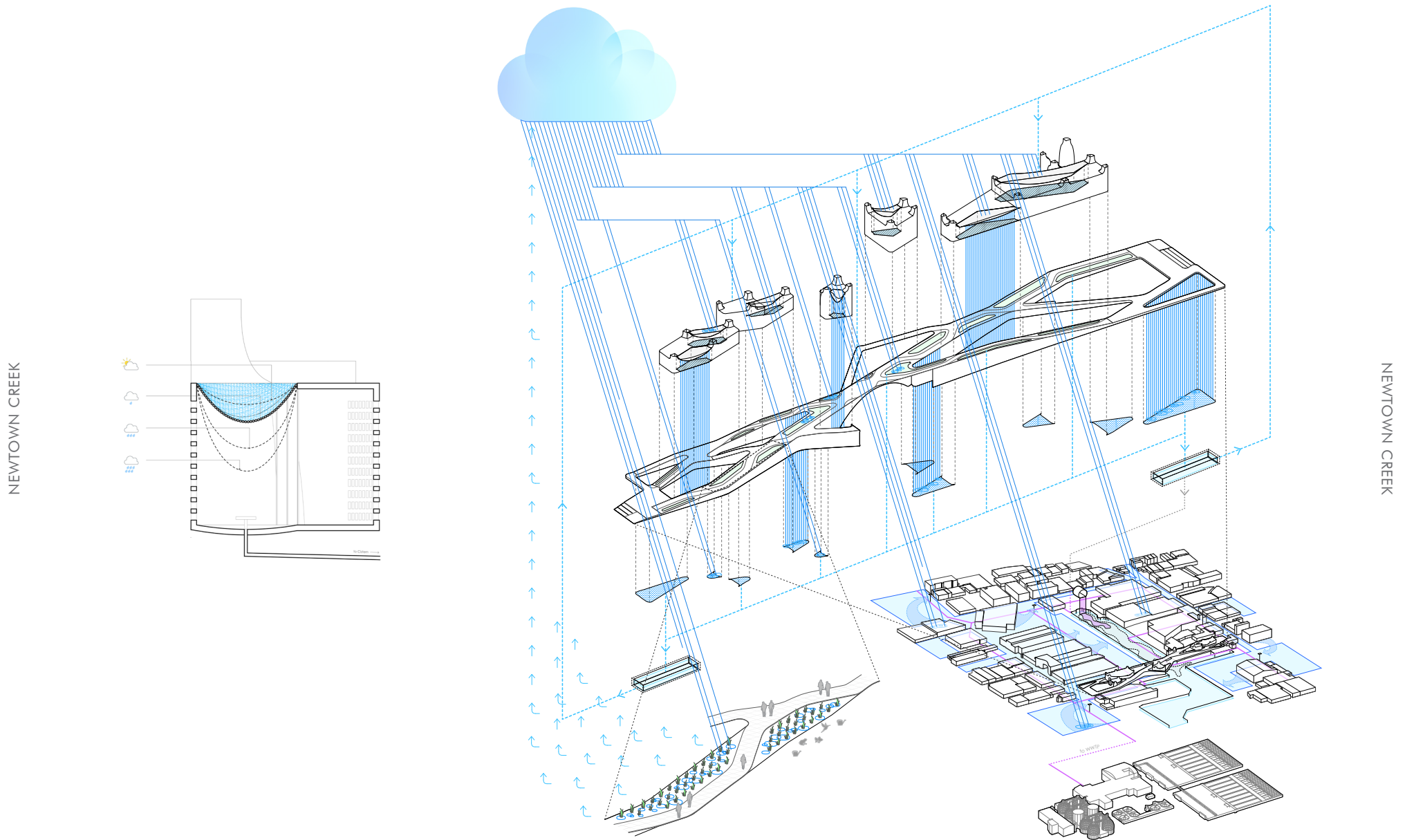
NEWTOWN CREEK

NEWTOWN CREEK



Cross Section | Water Circulation System
(below)

Demonstration Model | Water Circulation System
(above)



Bronx Housing

Our housing project aims to respond to the profound changes that technology and modern day machines have imposed on the contemporary way of life. This shift has undoubtedly led to a marked improvement in quality of life across all classes but in doing so it has left an architectural vacuum in its wake. Architecture has yet to respond to the changes it has imposed. The vast majority of housing initiatives today could have existed ten or twenty years ago but if the way we live has made such a dramatic shift then the way we design for living should make a similar leap forward.

Our proposal consists of a raised perimeter block lined with duplex units. An elevated walkway hugs the main residential area and provides shared breakout space for the residents. The scheme aims to integrate emerging technologies into its design at three different scales: the micro the meso and the macro.

At the macro scale the project sacrifices all parking space for a driverless car and ride-sharing pickup area. The meso scale incorporates private data storage servers that provide heating to the interior spaces. At the micro scale each unit is equipped with sliding 'smart-glass' panels that act as interactive screens and space dividers. Every unit also has its own drone delivery port that allows packages to be delivered when no one is home. This port doubles as extra kitchen counter space when not in use.

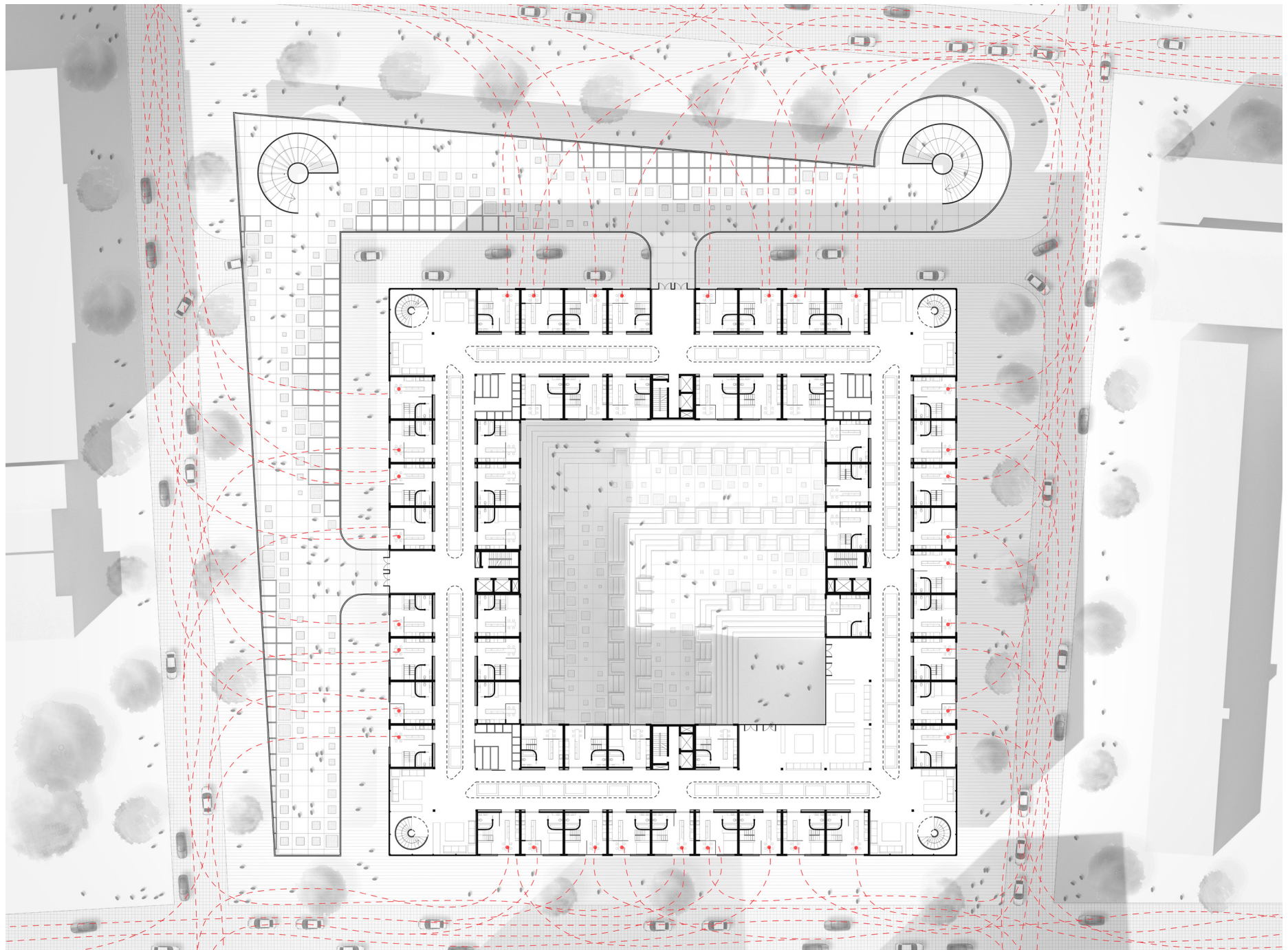
Professor | Mario Gooden
Location | Bronx, New York
Date | Fall 2017
Partner | Stephanie Bigelow

*all drawings shown were completed by me



BRONX HOUSING

BRONX HOUSING



BRONX HOUSING

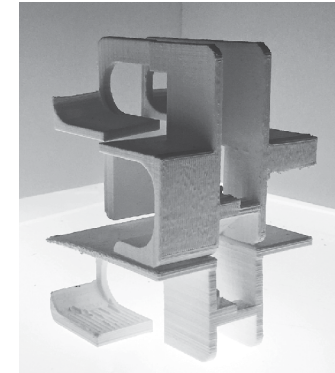
BRONX HOUSING

BRONX HOUSING

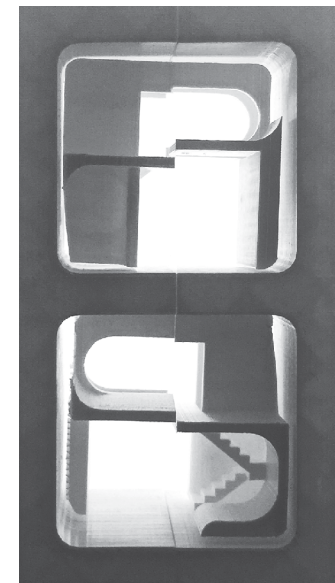


BRONX HOUSING

BRONX HOUSING



BRONX HOUSING



Thank you for your consideration

Carly