



SARAH CASTRO

ARCHITECTURE PORTFOLIO
SELECTED WORKS 2016 - 2018

SARAH CASTRO



PERSONAL INFORMATION

1129 W 27th St. Los Angeles, CA 90007
Cell. (908) 514-9253
Email: sarahcas@usc.edu

SKILLS

Advance: Revit, Rhino, Vray for Rhino, T-Splines for Rhino, AutoCAD, Premiere Pro, Photoshop, Illustrator, In Design, Lightroom, Microsoft Office (Word, Powerpoint, Excel), Spanish.

Intermediate: AGI32, After Effects, 3ds Max, Adobe Fuse, Mixamo.

PROFILE

- Highly developed verbal and written communication skills.
- Ability to work effectively in a team, both as a leader and a team member.

EDUCATION

University of Southern California, Los Angeles, CA
Bachelor's Degree.
Graduation May, 2019

HONORS

USC Latino Alumni Association
Scholar

- Requires a 3.0 GPA minimum per semester
- Fall 2015 - Present

Phi Theta Kappa, Iota Xi Chapter
Scholar

- Requires a 3.0 overall GPA
- Fall 2012 - Present

WORK EXPERIENCE

Schlemmer Algaze Associates | Architects and Interior Designers June 2018 - May 2019
Production intern
Duties: modeling of as built projects and detail drawings in Autodesk Revit.

SINCOX | La Luna Architecture + Planning June 2016 - August 2016
Architectural intern
Duties: Assisted in surveying sites, production of as-built drawings in AutoCAD.

PUBLICATIONS

Mirrors and Mass: Wayne Thom's Southern California.

- Shot and edited original interview videos with the artists for a student-design online exhibit.
- Spring 2018

USC Viterbi Department of Electrical Engineering January 2015 - December 2015
Receptionist
Duties: Front desk duties.

USC School of Social Work August 2014 - December 2014
Student Services assistant
Duties: Student scores data analysis.

CONTENT

01.

MOCA REIMAGINED

02.

THE MERGE

03.

OPTIMAL OFFICE

01

MOCA REIMAGINED

PROJECT DESCRIPTION

Some of the existing issues with MOCA were identified: lack of shade on plaza, isolated handicap elevator, need of stronger presence on Grand Avenue, confusing ticketing procedure, and confusing wayfinding.

The team was made of students of the University of Southern California in collaboration with student of Art Center College of Design.

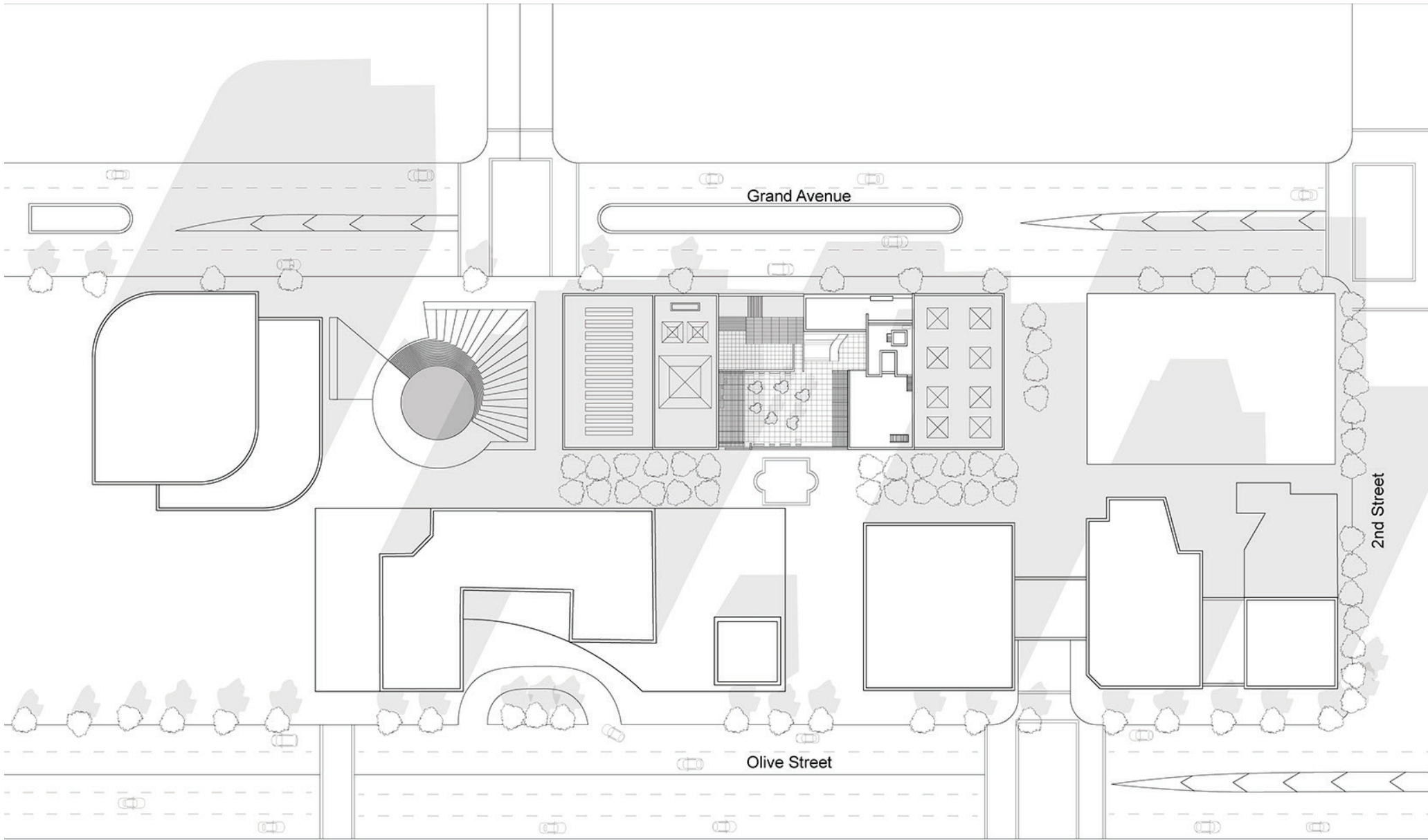
The design proposed to: incorporate greenery to the plaza and throughout MOCA as a visual relief, movable seating in the plaza will add flexibility for MOCA events, add canopies to plaza with greenery for shade and comfort, a new glass box containing ticketing, a new elevator for a more inclusive experience for everyone, change location of bookstore and cafe; and remove existing canopy.

CONCEPT DESCRIPTION

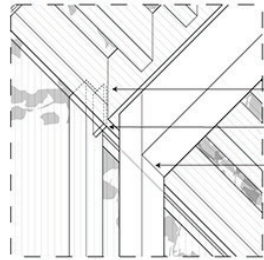
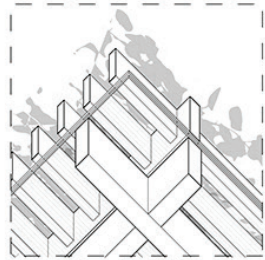
Provide comfortable spaces for people to gather in, to activate the plaza and courtyard, and attract visitors by providing a more engaging and inclusive experience.



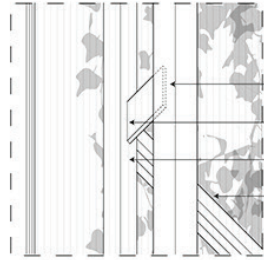
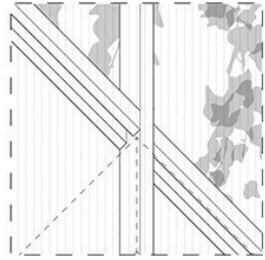




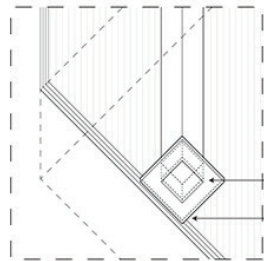
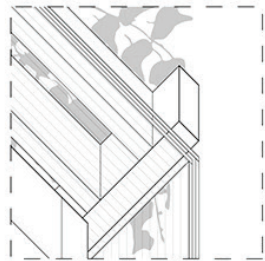
SITEPLAN



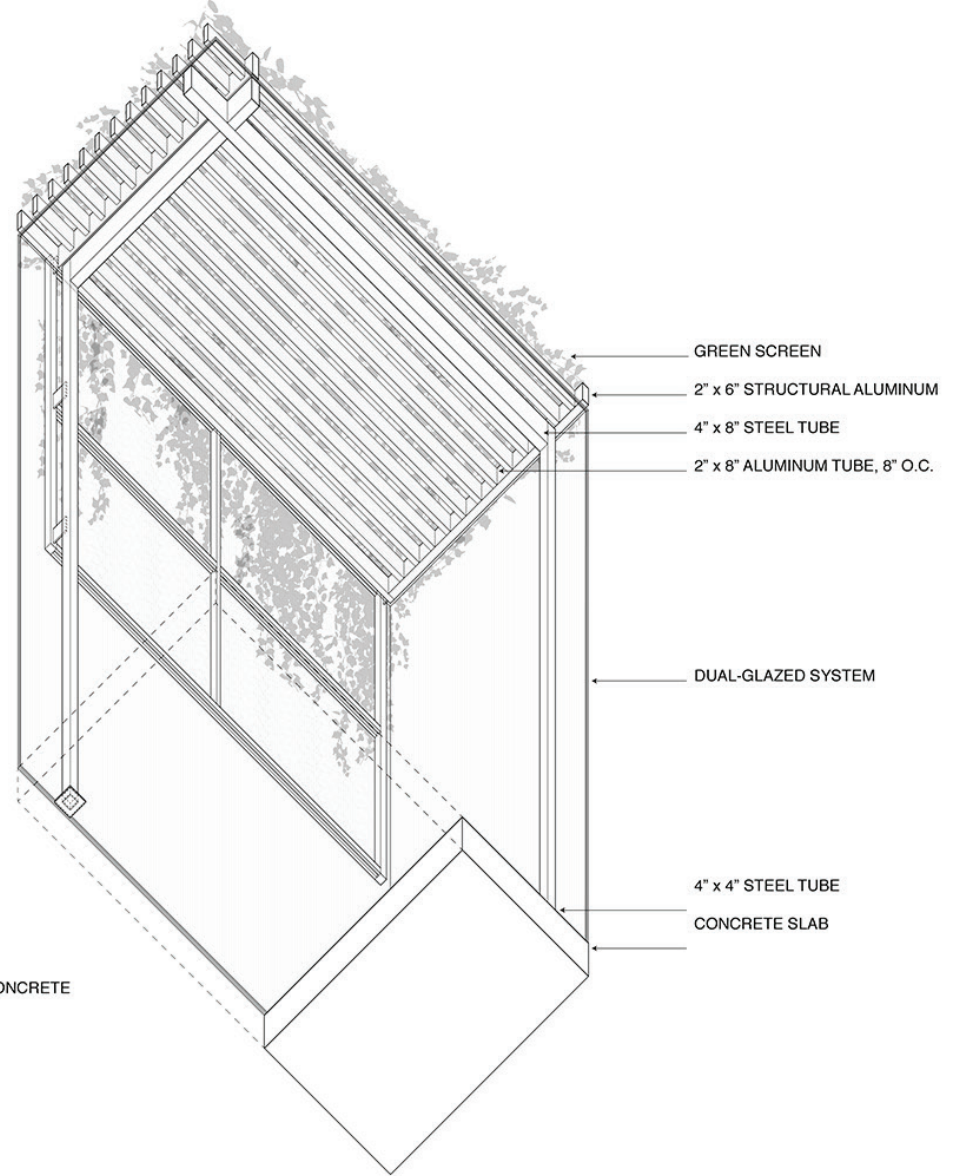
WELDED CONNECTION
STEEL PLATE
BOLT CONNECTION

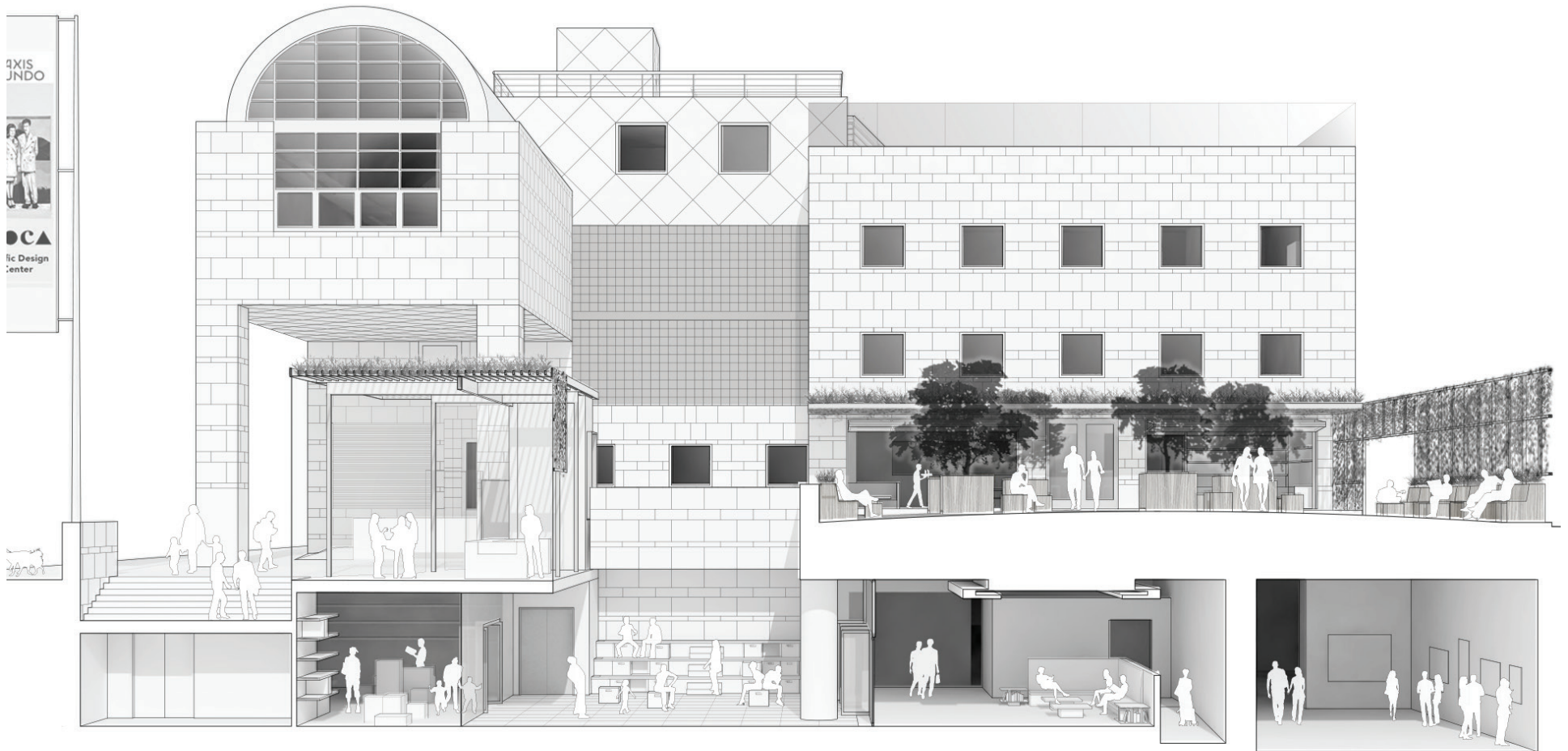


STEEL PLATE
WELD CONNECTION
3" x 3" ALUMINUM TUBE
1" x 2" ALUMINUM TUBE

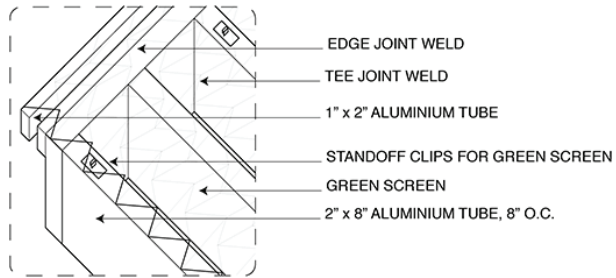


WELDED CONNECTION
STEEL PLATE ANCHORED TO CONCRETE

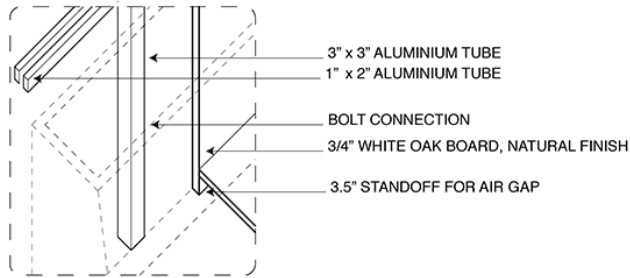




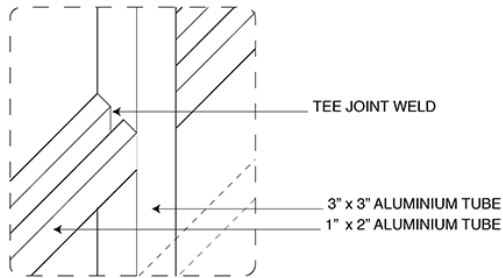
SECTION PERSPECTIVE



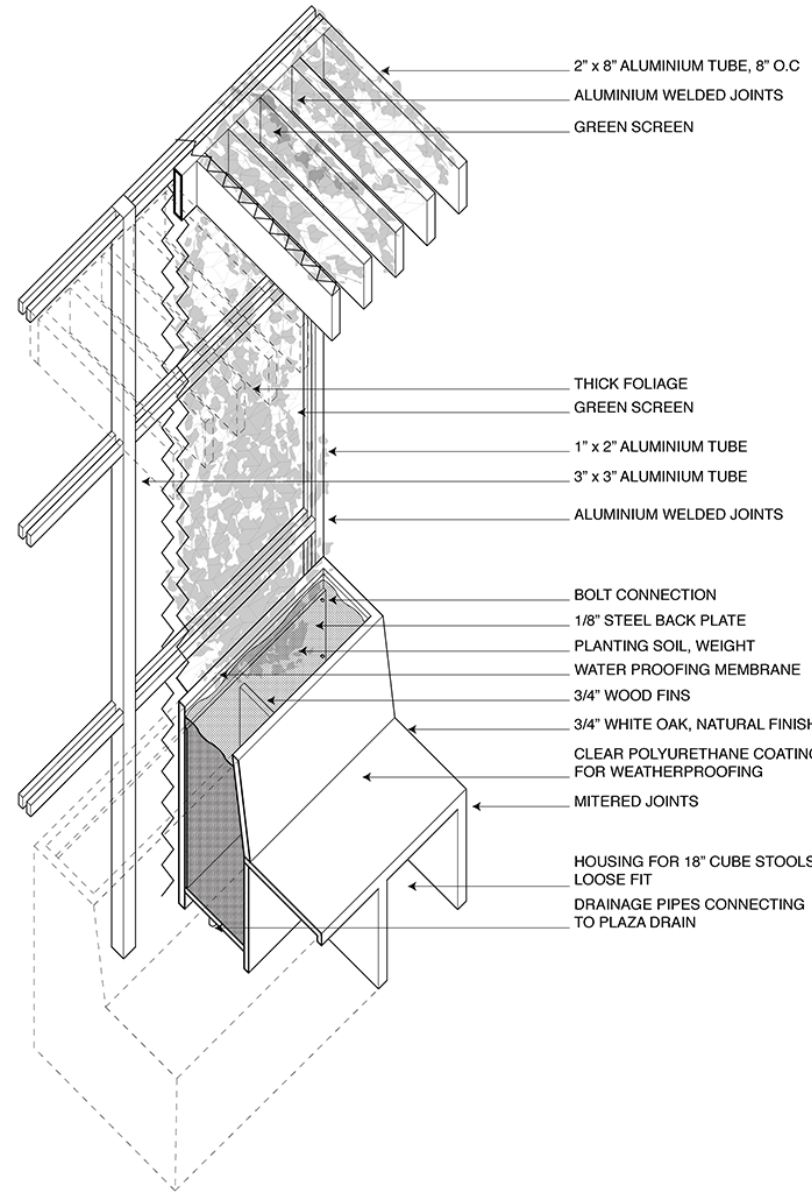
- EDGE JOINT WELD
- TEE JOINT WELD
- 1" x 2" ALUMINIUM TUBE
- STANDOFF CLIPS FOR GREEN SCREEN
- GREEN SCREEN
- 2" x 8" ALUMINIUM TUBE, 8" O.C.



- 3" x 3" ALUMINIUM TUBE
- 1" x 2" ALUMINIUM TUBE
- BOLT CONNECTION
- 3/4" WHITE OAK BOARD, NATURAL FINISH
- 3.5" STANDOFF FOR AIR GAP



- TEE JOINT WELD
- 3" x 3" ALUMINIUM TUBE
- 1" x 2" ALUMINIUM TUBE



- 2" x 8" ALUMINIUM TUBE, 8" O.C
- ALUMINIUM WELDED JOINTS
- GREEN SCREEN

- THICK FOLIAGE
- GREEN SCREEN
- 1" x 2" ALUMINIUM TUBE
- 3" x 3" ALUMINIUM TUBE
- ALUMINIUM WELDED JOINTS

- BOLT CONNECTION
- 1/8" STEEL BACK PLATE
- PLANTING SOIL, WEIGHT
- WATER PROOFING MEMBRANE
- 3/4" WOOD FINIS
- 3/4" WHITE OAK, NATURAL FINISH
- CLEAR POLYURETHANE COATING FOR WEATHERPROOFING
- MITERED JOINTS

- HOUSING FOR 18" CUBE STOOLS LOOSE FIT
- DRAINAGE PIPES CONNECTING TO PLAZA DRAIN

02

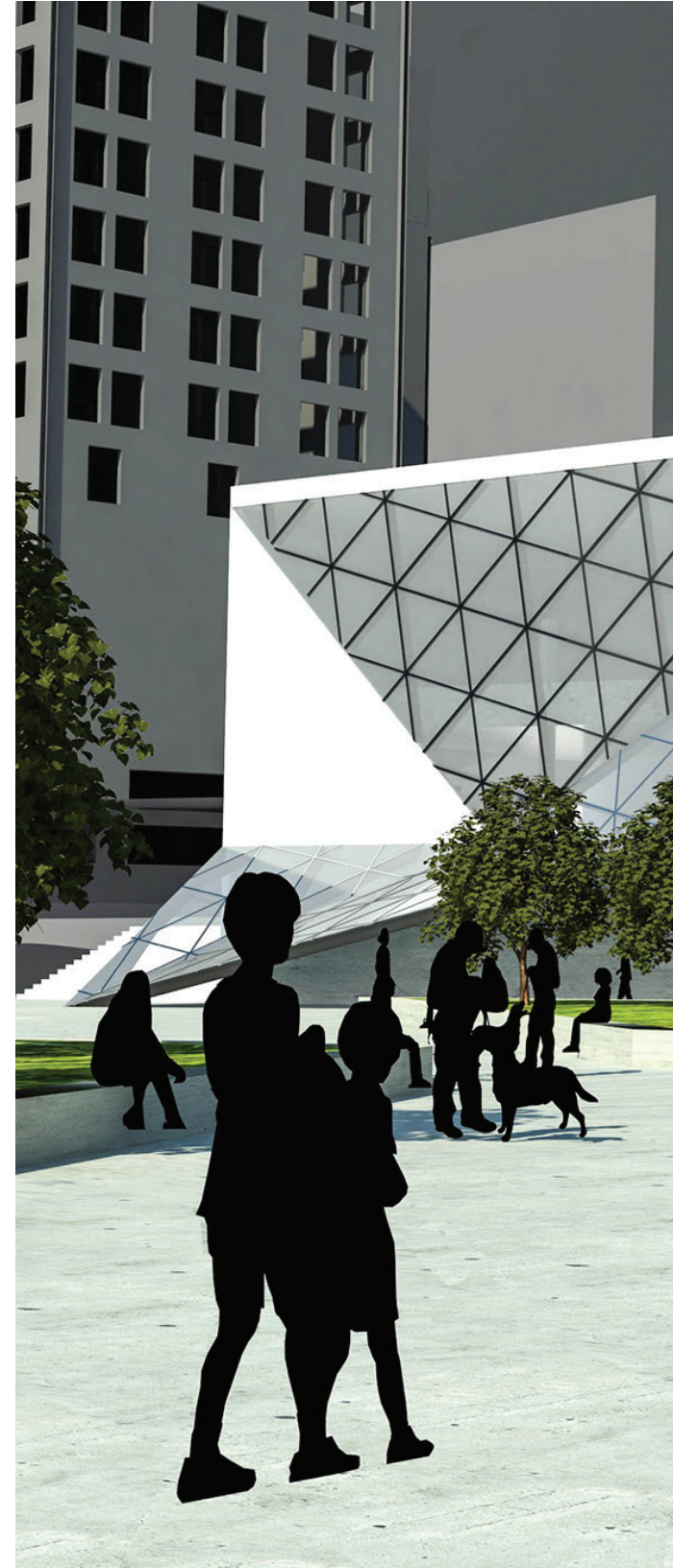
THE MERGE

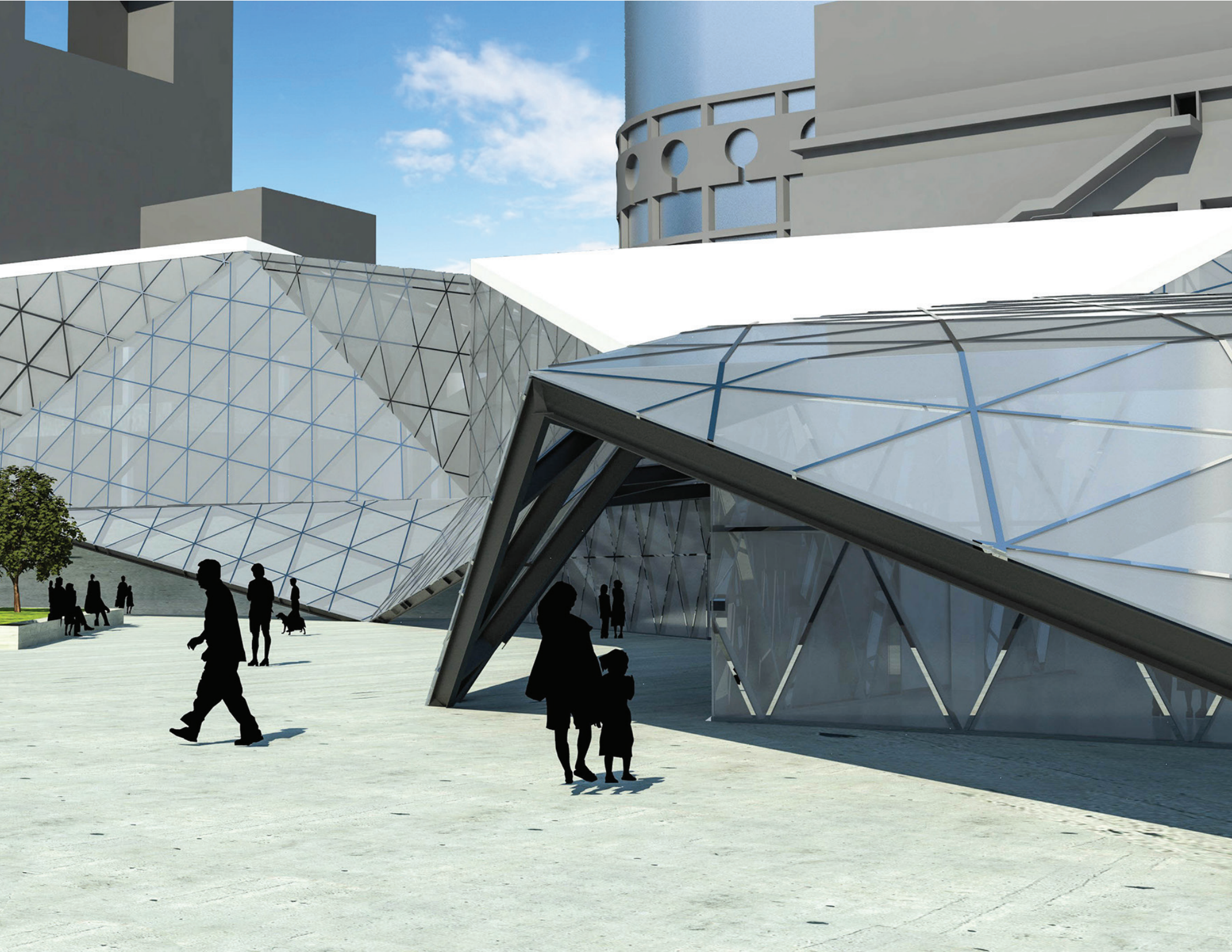
PROJECT DESCRIPTION

The project consisted on proposing a design for the Center for Architecture and Design Los Angeles with the following program: gallery space, library, auditorium, giftshop, offices, lobby, bathrooms, emergency exit and evacuation routes as well as include a comprehensive structural system.

CONCEPT DESCRIPTION

The site exists within a contrasting architectural environment: a rich historic context to the south and a modernist architectural approach to the north. The museum should acknowledge the duality of the site and serve as a clear formal separator so that, through the creation of framed views and transparent materiality, its interior serves as a connection.



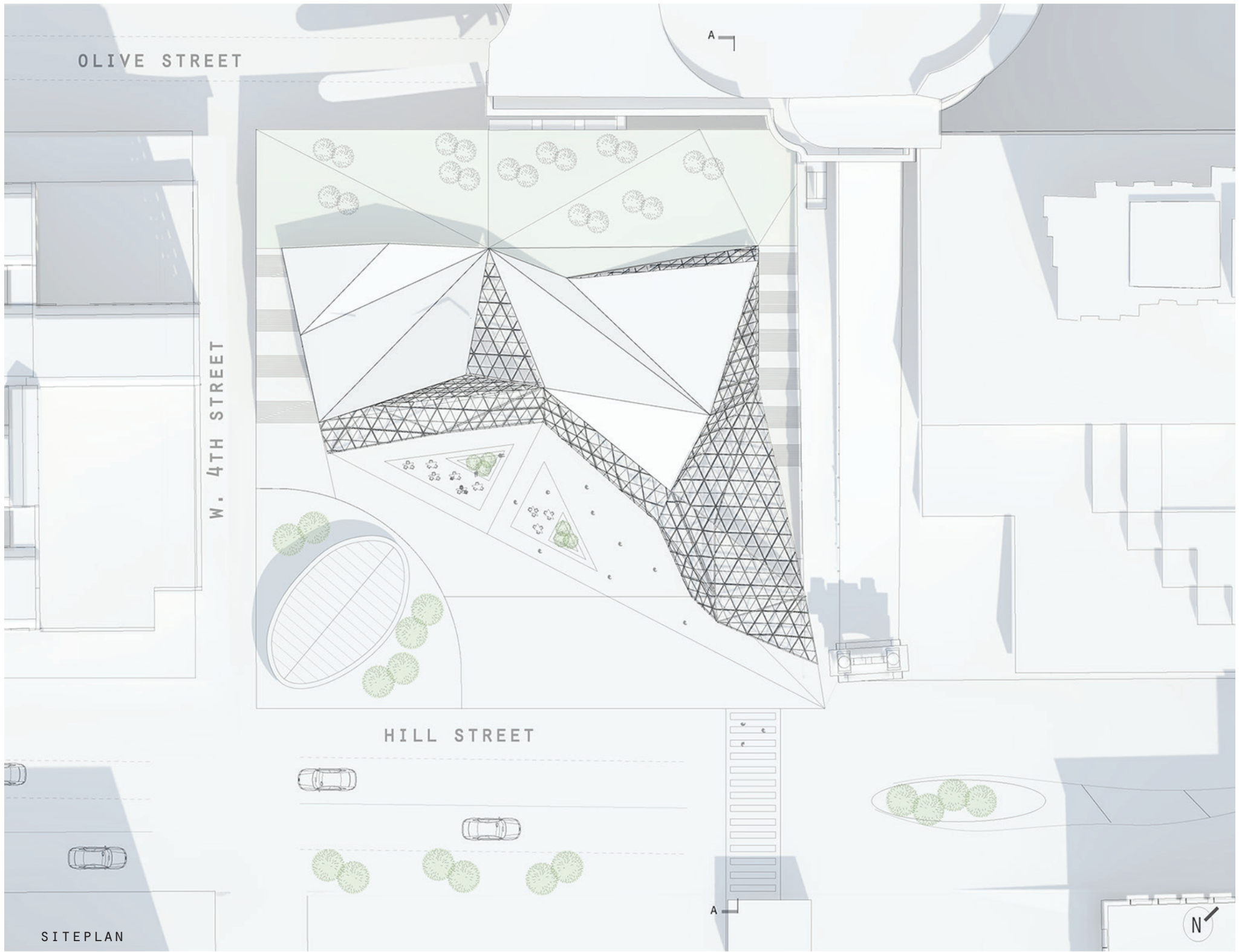


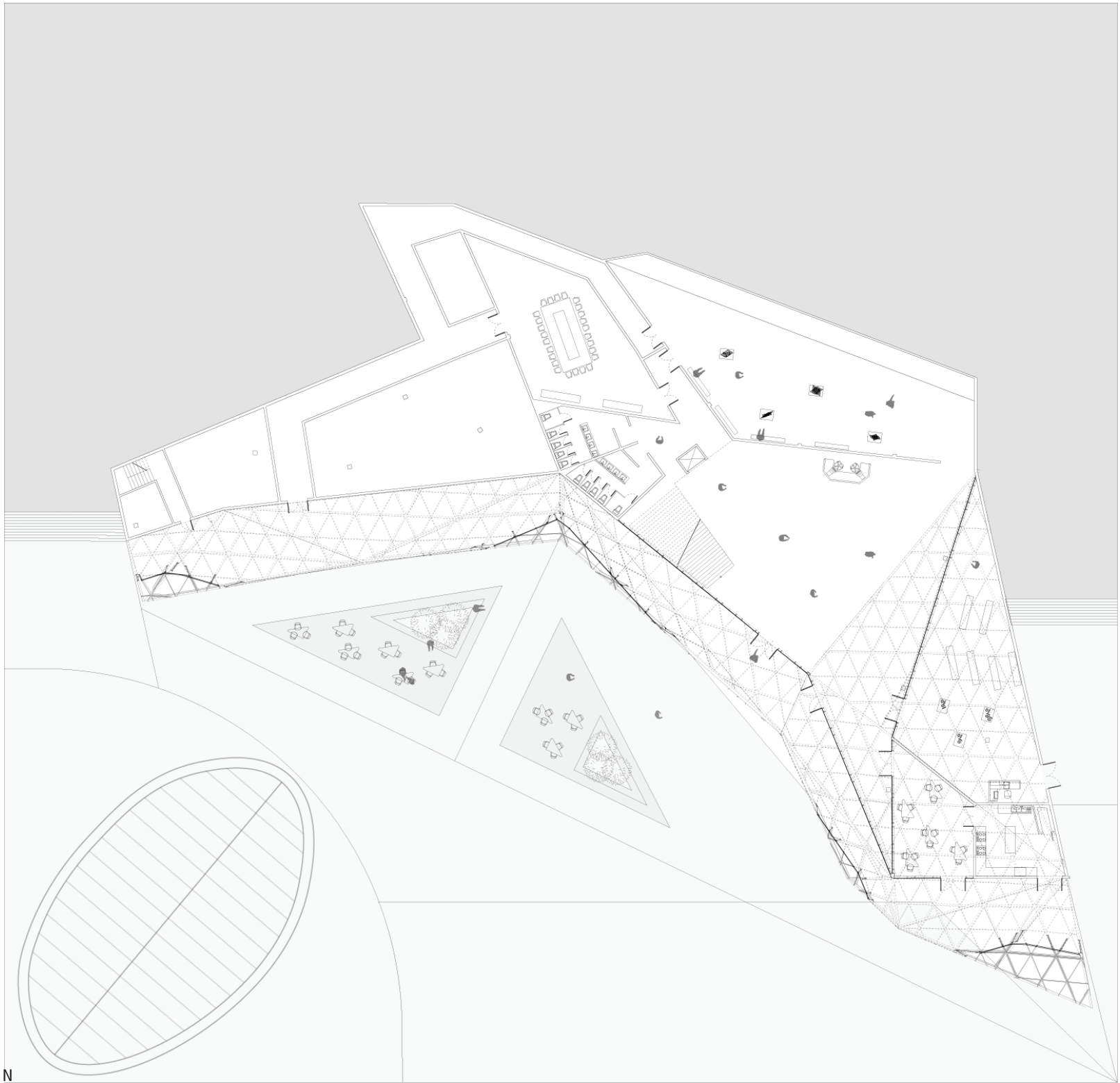
OLIVE STREET

W. 4TH STREET

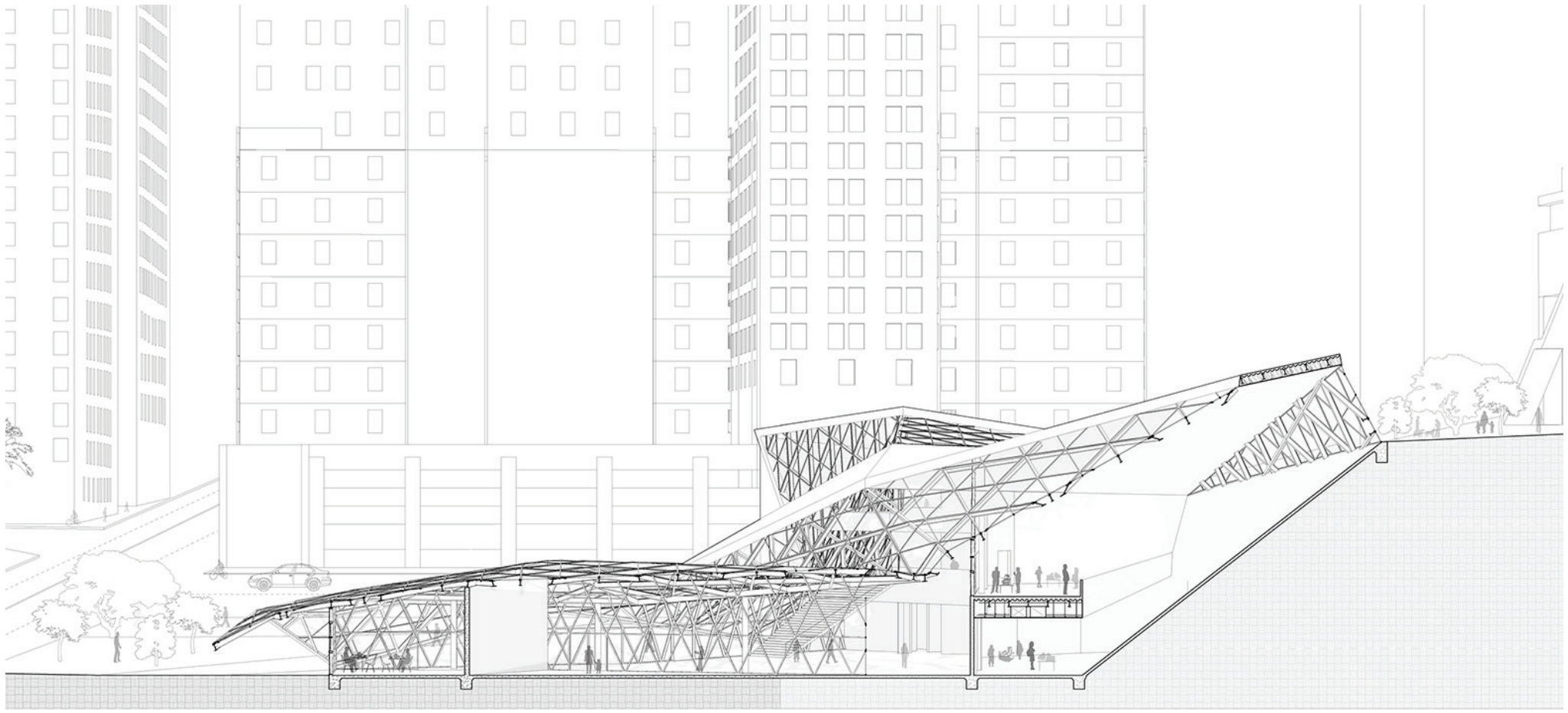
HILL STREET

SITEPLAN





FLOORPLAN



SECTION PERSPECTIVE

CONTROL JOINTS
6" CONCRETE FILLED METAL
DECK

STRUCTURAL STEEL
SUSPENDED CEILING
24" C-TO-C
5/8" GYPSUM BOARD

ALUMINUM MULLION
(INTERIOR) 1" LAMINATED
GLASS

POLISHED EXPOSED CONCRETE

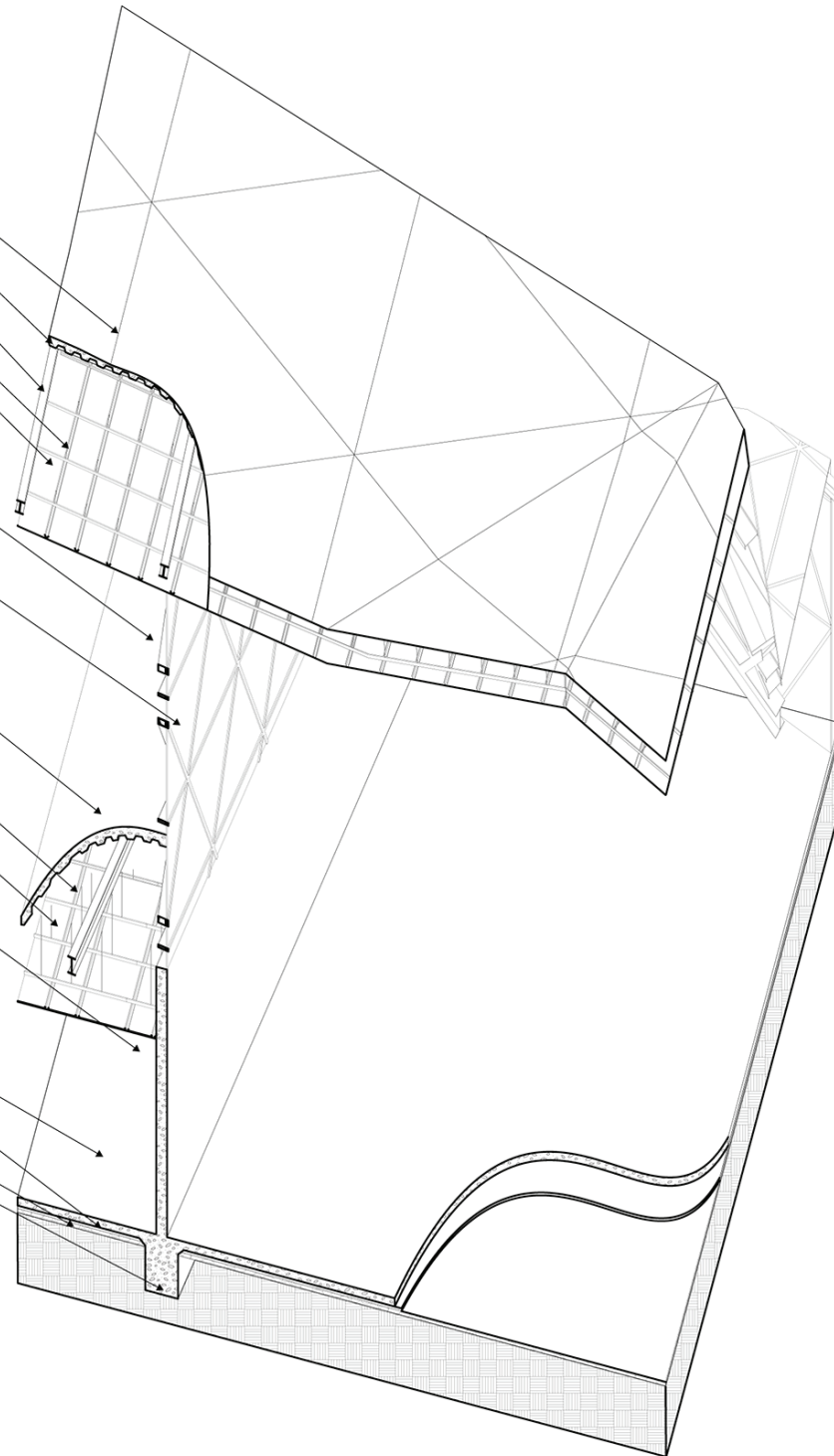
SUSPENDED CEILING
5/8" GYPSUM BOARD

8" EXPOSED POUR-IN-PLACE
REINFORCED CONCRETE WALL

6" SLAB ON GRADE

VAPOR BARRIER

GRAVEL
WALL FOOTING



03

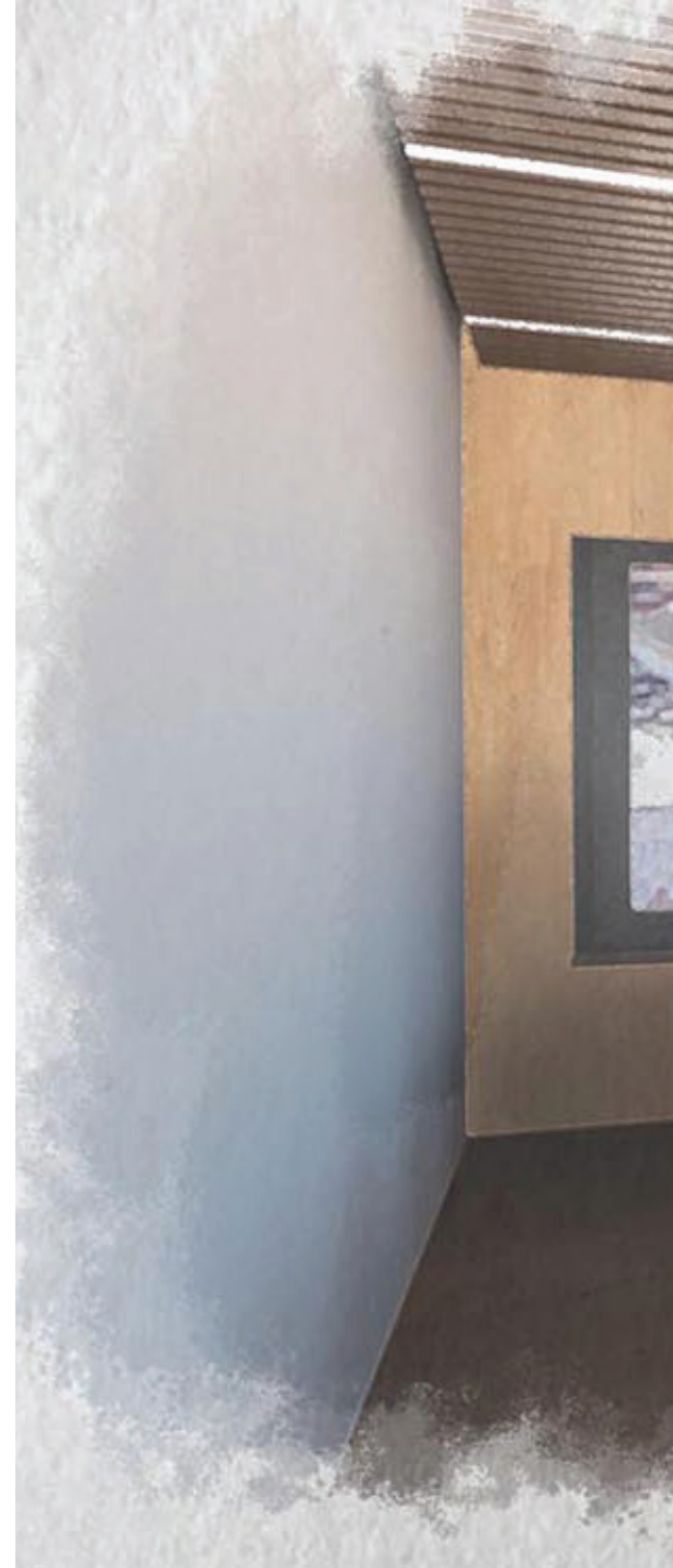
OPTIMAL OFFICE

PROJECT DESCRIPTION

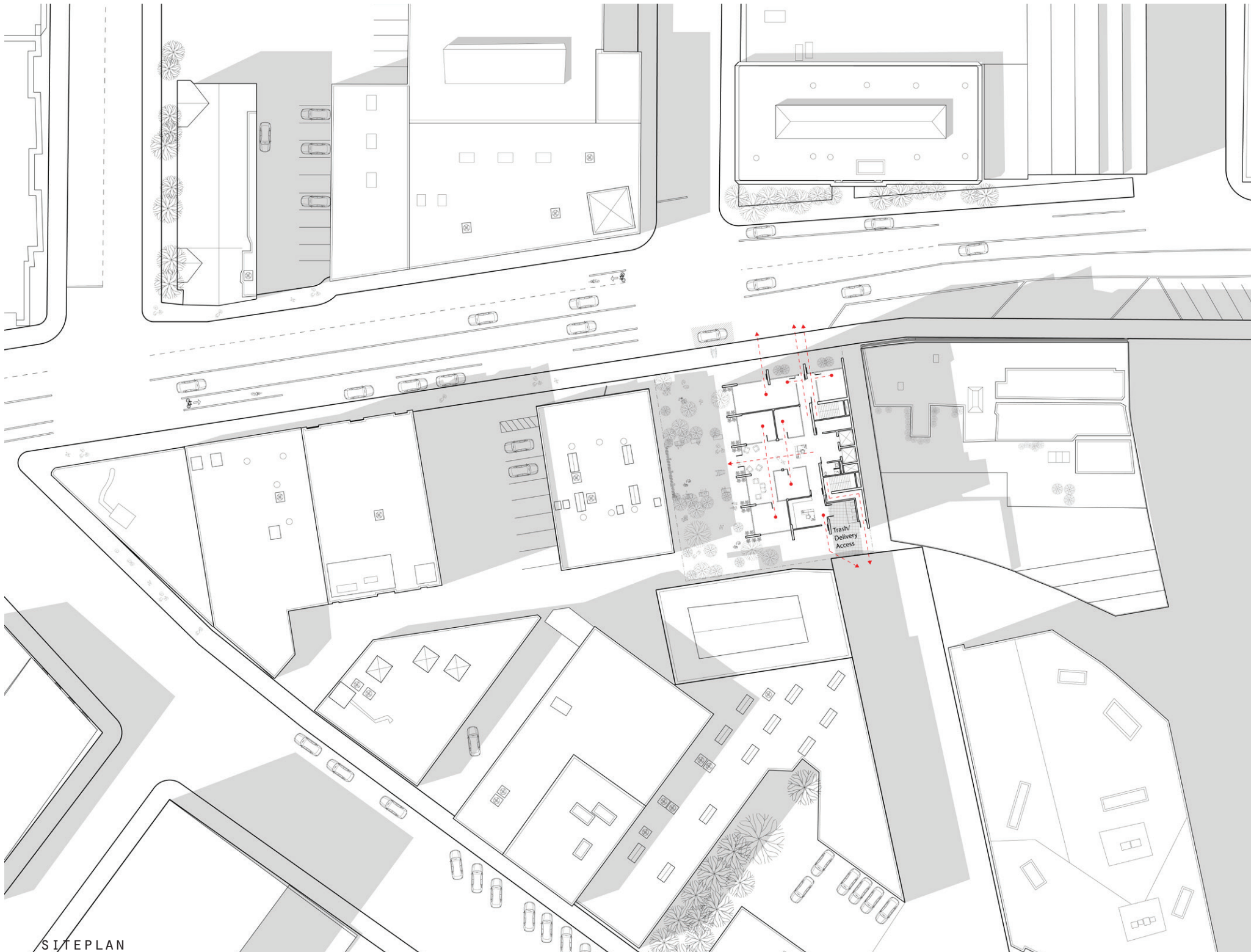
Design a 36000sqft flexible office space with a maximum of 4500sqft at ground level in the Arts District in Downtown Los Angeles. The proposal must have a CLT structure, be ADA compliant and provide sufficient exit routes for the size of the building.

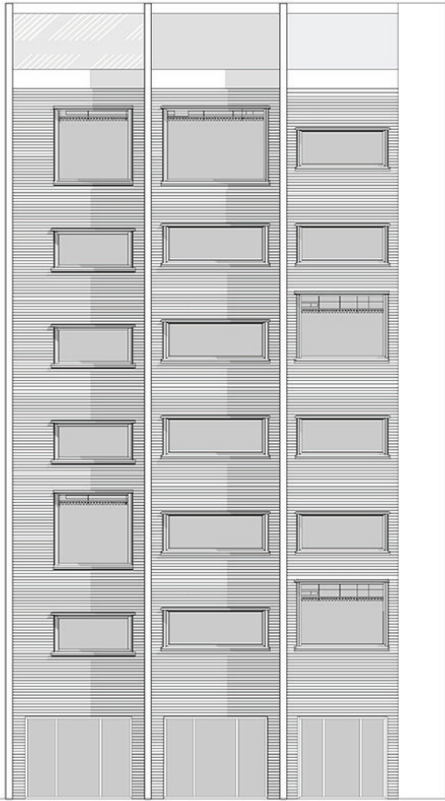
CONCEPT DESCRIPTION

The main goal of the design was to maximize rentable space by moving the building to the property line on the East elevation and pushing the core to the side, and a column grid that allows for maximum uninterrupted space in the interior. The design also focuses on being sun responsive and provides different facade conditions on each elevation that address sun orientation: South (horizontal louvers); West (vertical louvers); North (exposed Shear walls that follow interior grid); and East (fire-rated wall because is on the property line).

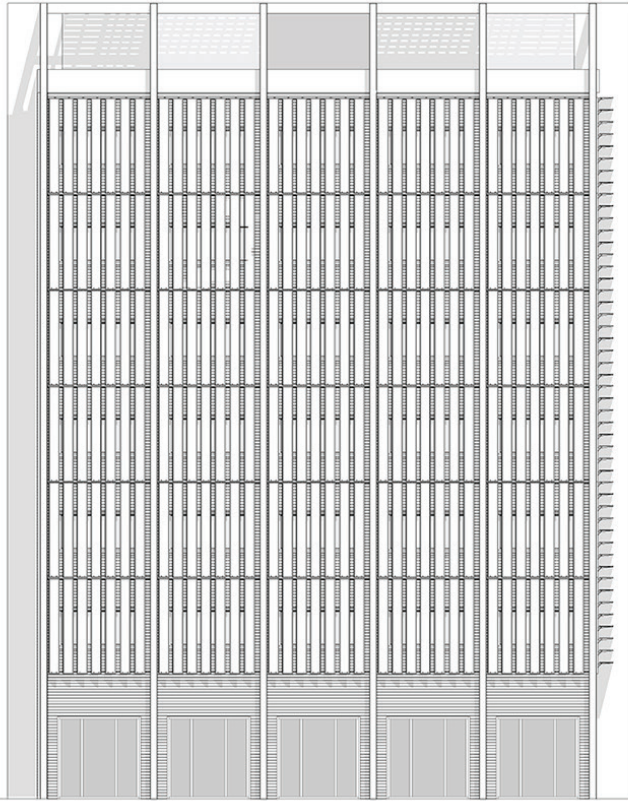




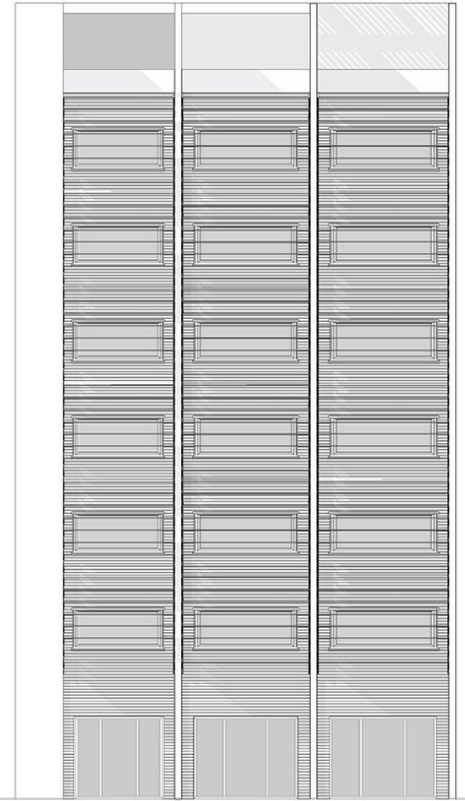




NORTHWEST



SOUTHWEST



SOUTHEAST



SECTION PERSPECTIVE

