

HANS VILJOEN

HANS VILJOEN

hv@hansviljoen.com
www.hansviljoen.com

1989 . born in South Africa
2008 — 2013 . study Masters in Architecture at University of Pretoria
2013 — 2015 . candidate architect at ST&AR Architects, Cape Town
2015 — 2017 . professional architect at Revel Fox & Partners, Cape Town
2017 — 2018 . study Masters in Urbanism Studies at KTH, Stockholm
2018 . senior architect at Inros Lackner Vietnam, Hanoi

CONTENTS

04	Public
116	Housing
132	Residential

Inros Lackner Vietnam

06 World Under your Feet

MSc Urbanism Studies

KTH Royal Institute of Technology, Stockholm, 2018

12 Medborgarplatsen

20 Bundesallee

Revel Fox & Partners Architects and Planners

32 UCT Graduate School of Business

42 The Vineyard Hotel
_Manor House Conference Centre

M(prof) Architecture

University of Pretoria, 2013

56 31 Bourke Street -
an address for a new subjectivity

BHons Architecture

University of Pretoria, 2011

78 Zwartkoppies Experimental
Kitchen & Restaurant

94 Ernest Cole Intersection

BSc Architecture

University of Pretoria, 2010

104 Textile Plant

110 Burlington Arcade Jazz Club



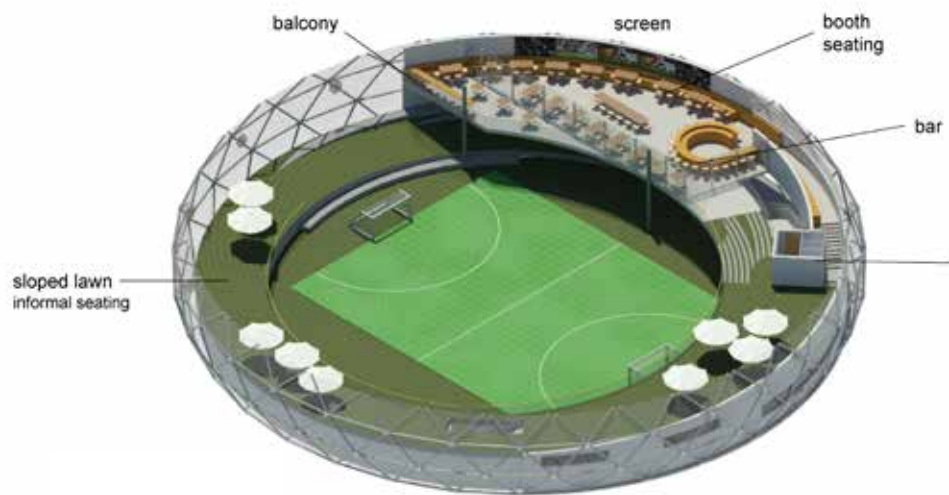
2018
World Under Your Feet
Various cities in India

A 'mini stadium' with small football field and restaurant is designed as a temporary structure that can be assembled and disassembled at different locations.

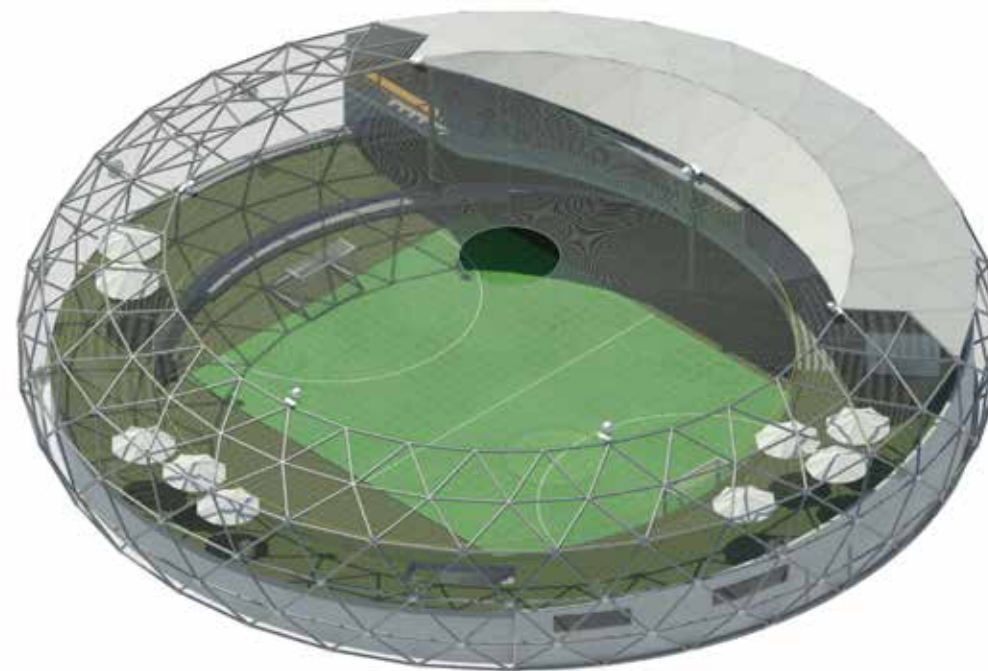
sketch , concept & design



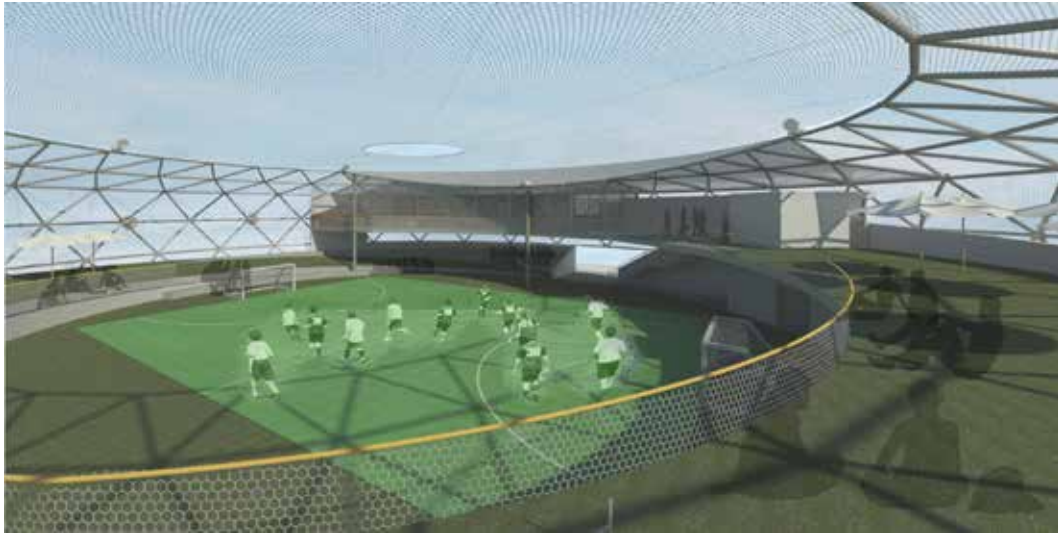
ground floor isometric



first floor isometric

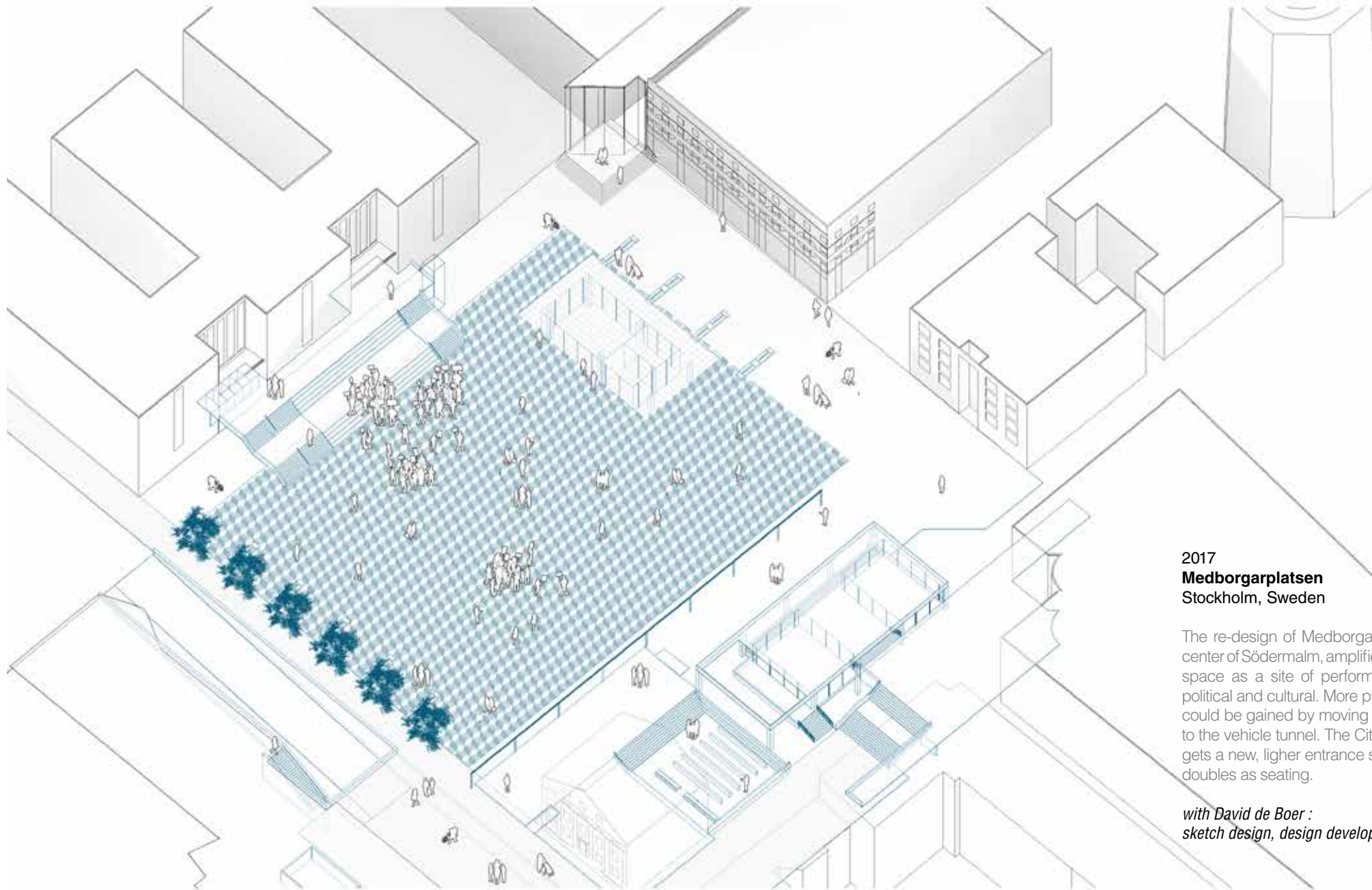


isometric



exterior perspectives

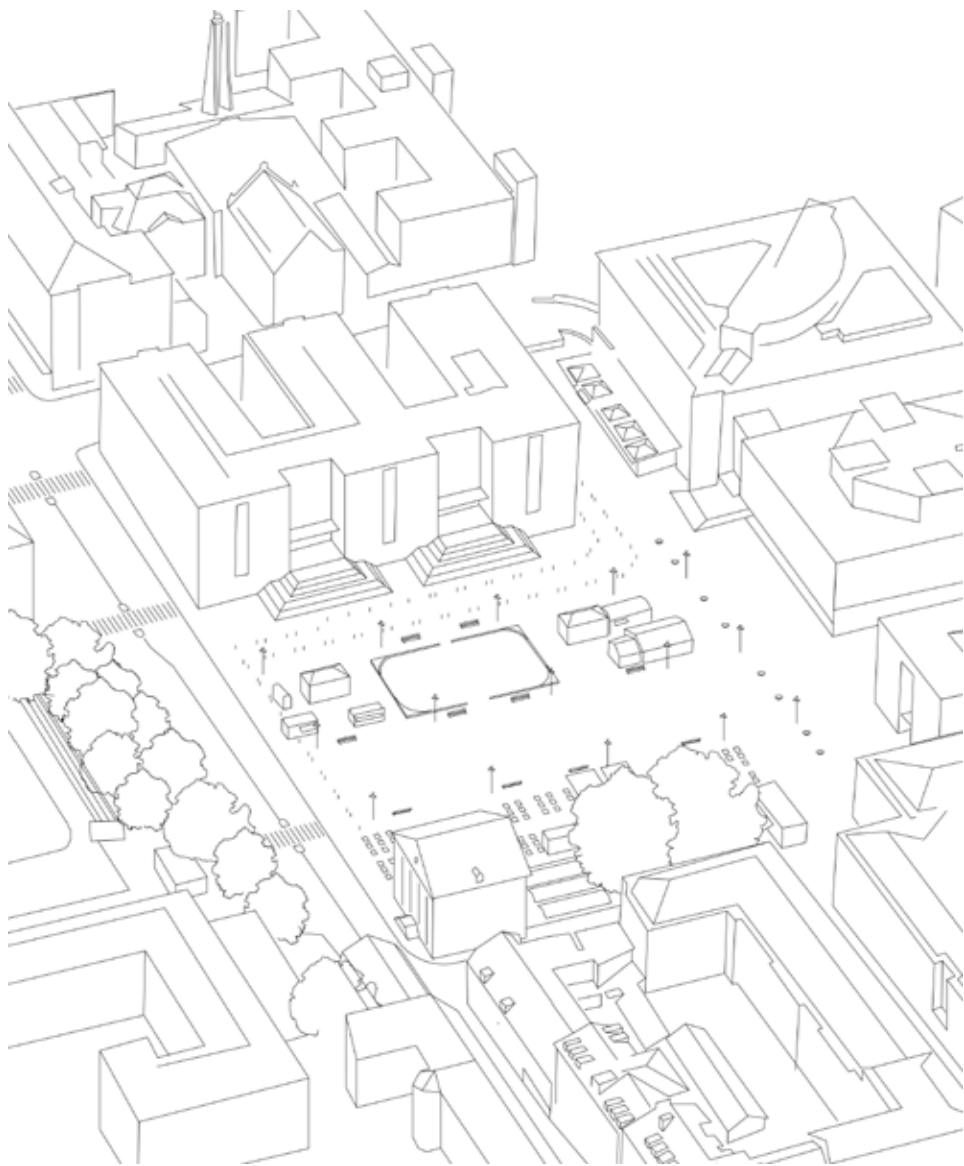
restaurant interior perspectives



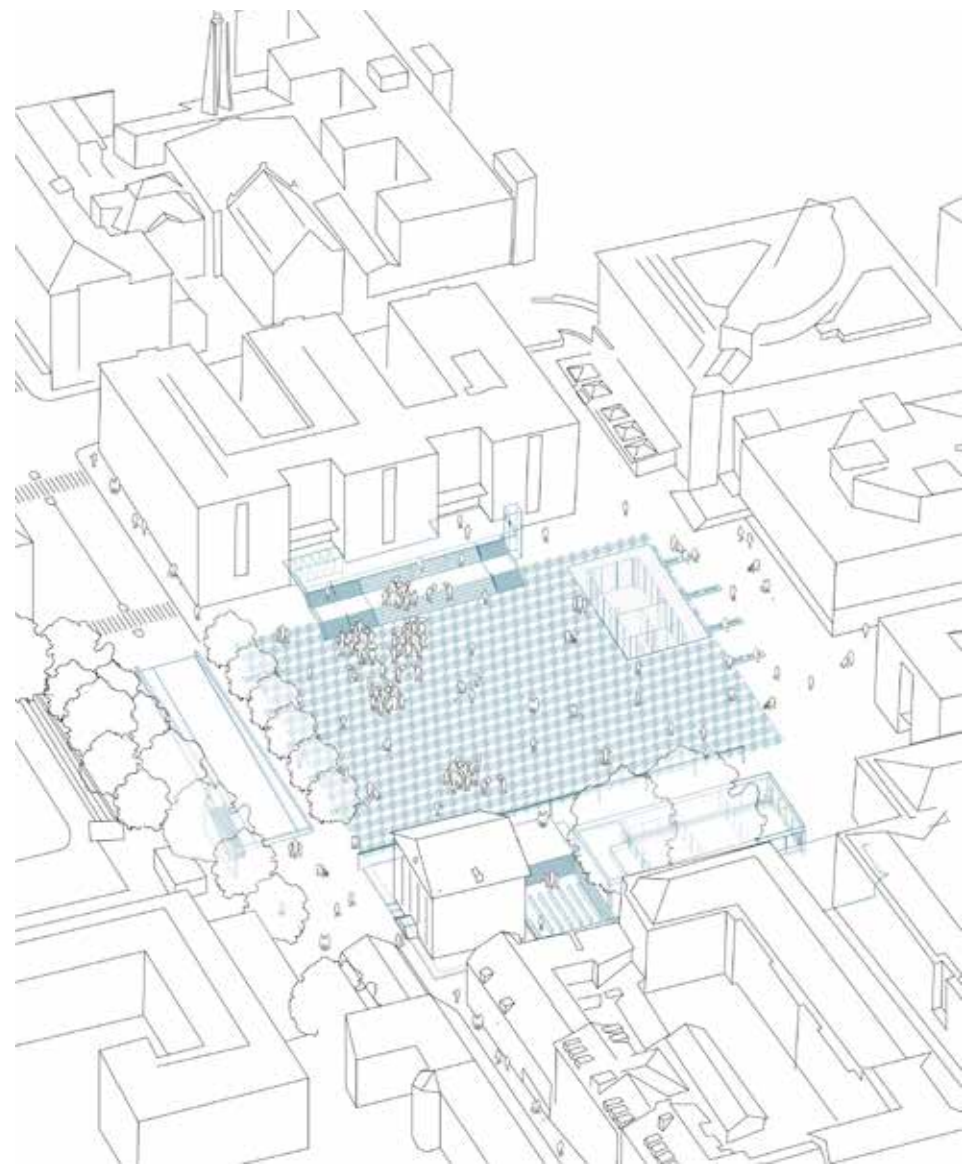
2017
Medborgarplatsen
Stockholm, Sweden

The re-design of Medborgarplatsen, the center of Södermalm, amplifies this public space as a site of performance - both political and cultural. More public surface could be gained by moving the entrance to the vehicle tunnel. The Citizen's House gets a new, higher entrance staircase that doubles as seating.

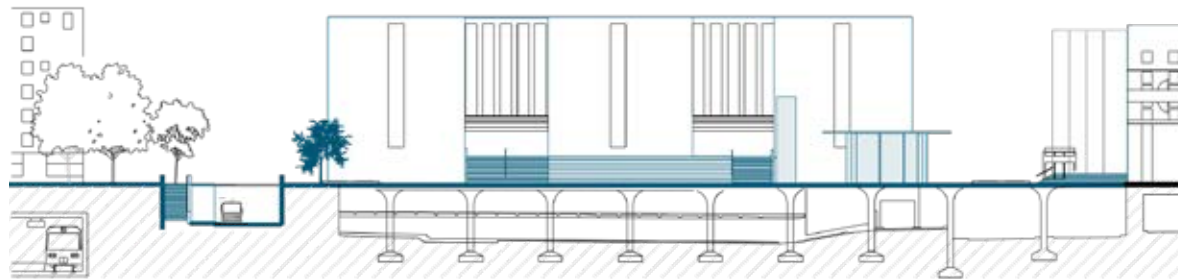
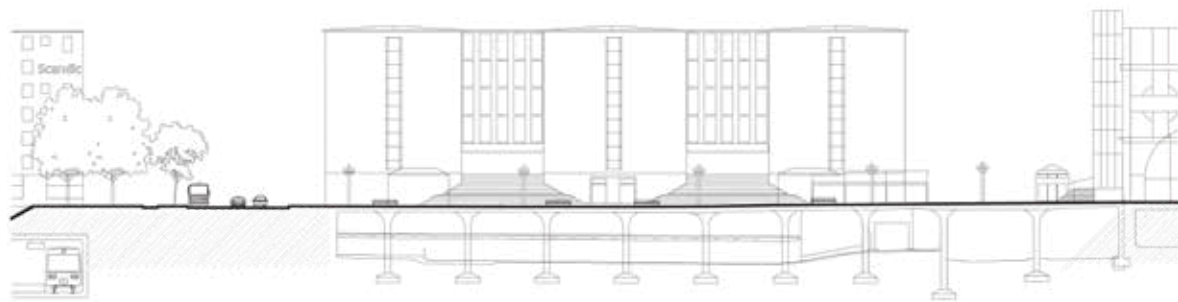
*with David de Boer :
sketch design, design development*



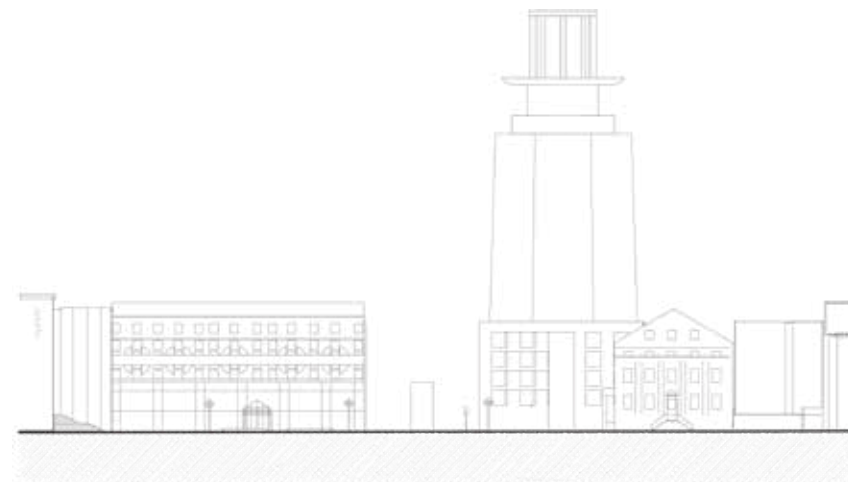
existing square



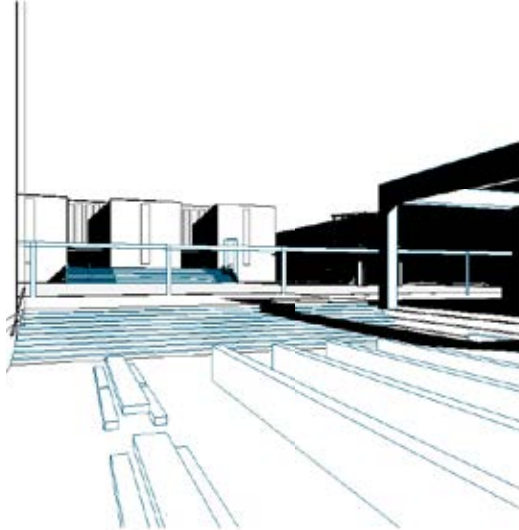
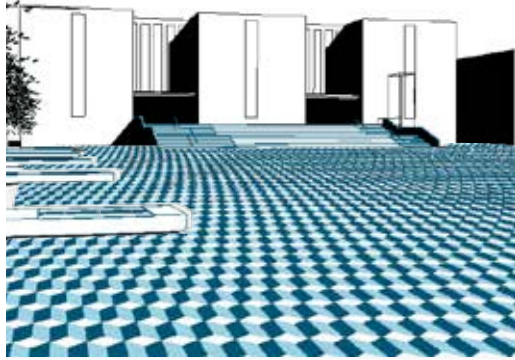
proposed square



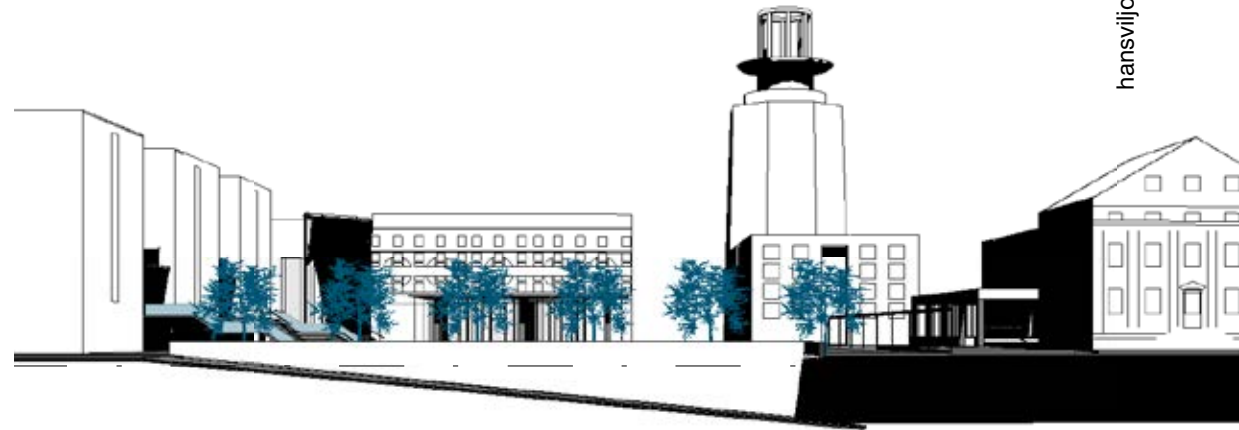
section EE . existing and new



section DD . existing and new



perpsectives



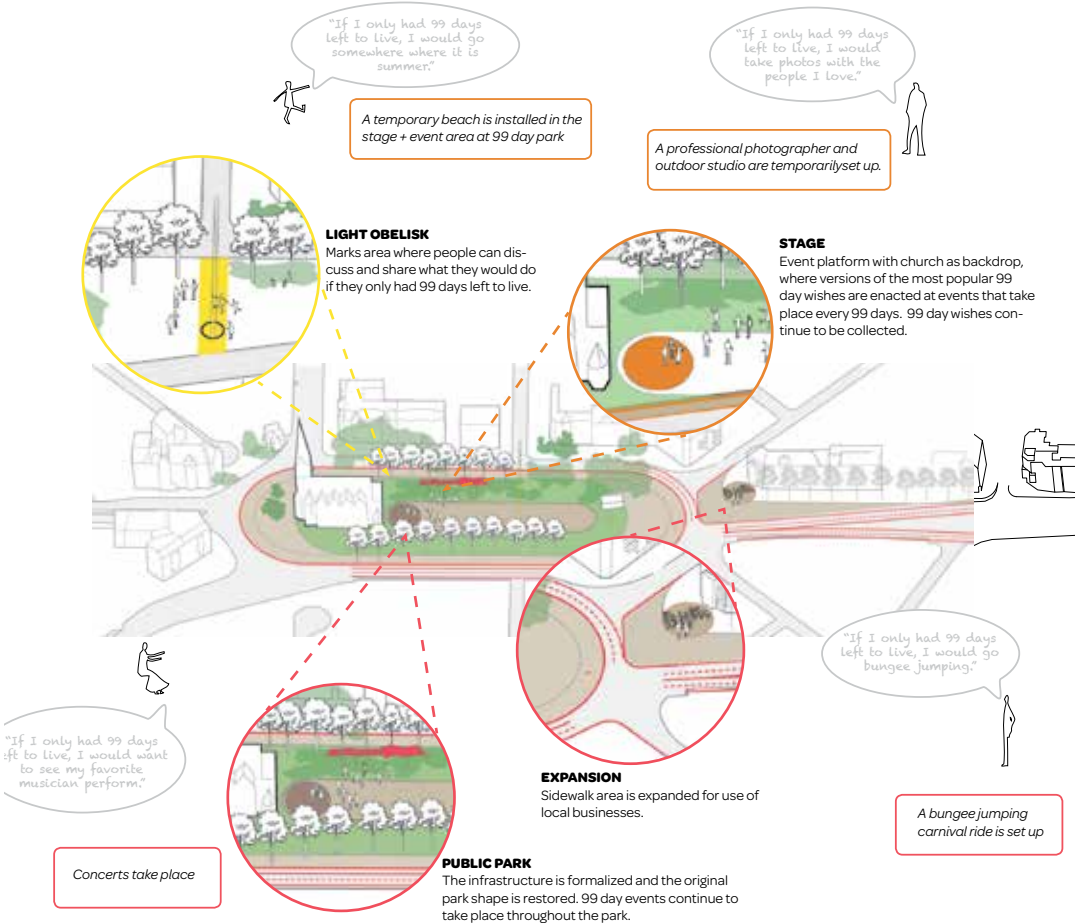
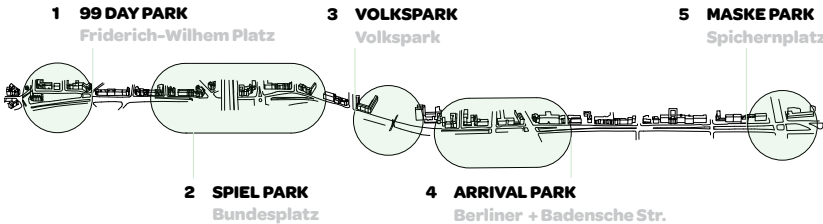
perpsectives

2017
Bundesallee
Berlin, Germany

Bundesallee is a busy street dominated by vehicle use. Phased interventions in five parks along the route, together with lane reductions extend sidewalks, greenspace and the re-orient the street to other-than-car-uses.

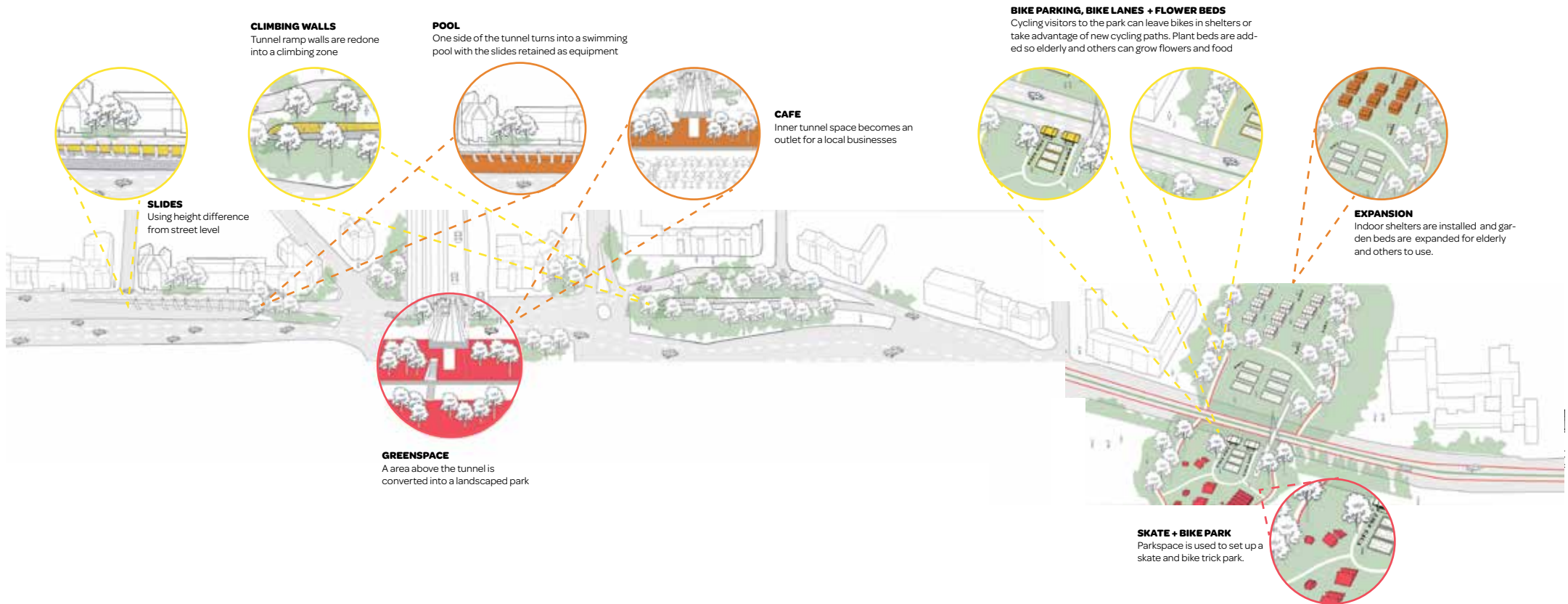
*KTH Urbanism Studies: w/Julia Bürgi
and Hanyao Chen: sketch design*

FIVE INTERVENTION AREAS



1 99 DAY PARK Friderich-Wilhelm Platz

In spirit of the park's namesake, Kaiser Friederich Wilhelm, who held the throne for only 99 days before dying, we propose a park that invokes the space's original layout and solicits the participation of locals based on what they would do with 99 days left to live.

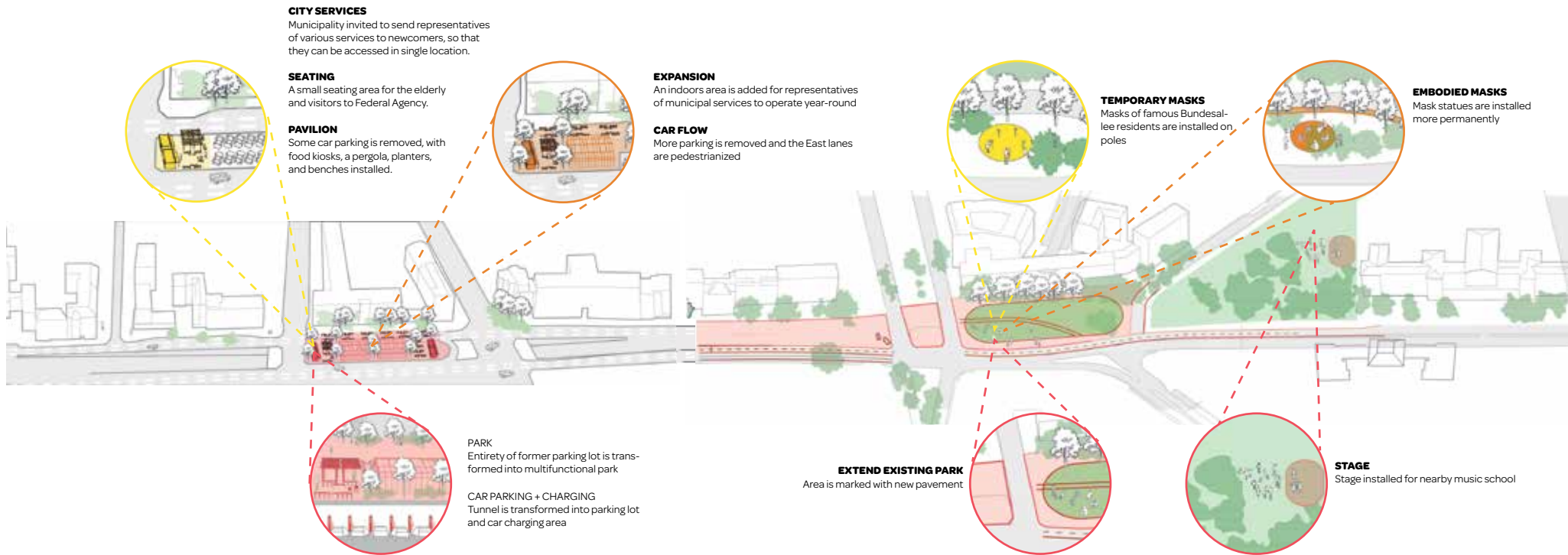


2 SPIEL PARK Bundesplatz

Spiel park (meaning “play park”) asks for the participation of children and their parents in order to reclaim the tunnel and its ramps. Starting in phase 1 with temporary installations on each ramp and in the tunnel itself and continuing in phase 2 with the green-ification of the area above the tunnel and below the train tracks and highway, the ultimate goal is to create an amusement park.

3 VOLKSPARK volkspark

Acknowledging the needs of typical park users, the elderly living in nearby facilities, and cyclists, the renovation of Volkspark includes interventions specifically focused on each of these groups. Over the course of the phases, a cycle track, elderly-friendly exercise and gardening areas, and a children’s playground will be installed.



4 ARRIVAL PARK Berliner + Badensche Str.

What are the needs of newcomers in Berlin and how can the city help them? In order to facilitate the transition of moving to a new country, we offer a space where people going to and working in the Federal Migration and Refugee Agency office can learn about municipal services in a consolidated way and perhaps even relax a bit.

5 MASKE PARK Spichernplatz

Bundesallee and its surroundings have been home to many influential characters, the most prominent of whom are to be honored as statues in mask form, allowing visitors to interact with these historical figures. By simplifying traffic and adding green space in this area, the nearby cultural institutions can have a new space to hold events for the public.



2015-2016
UCT Graduate School of Business
V&A Waterfront, Cape Town, SA

New academic conference centre in historical context, at the old Breakwater Prison, which RF&P adapted to the Graduate School of Business in 1992.

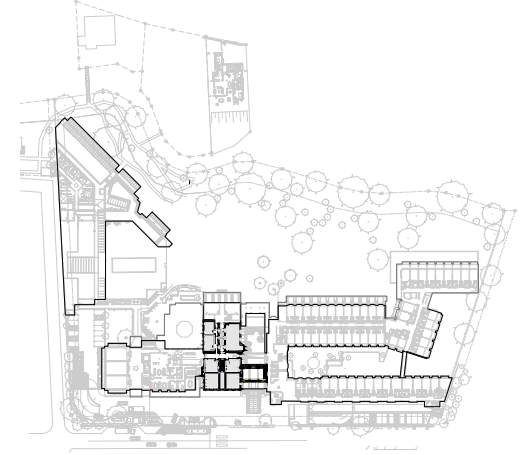
sketch design, design development











2016

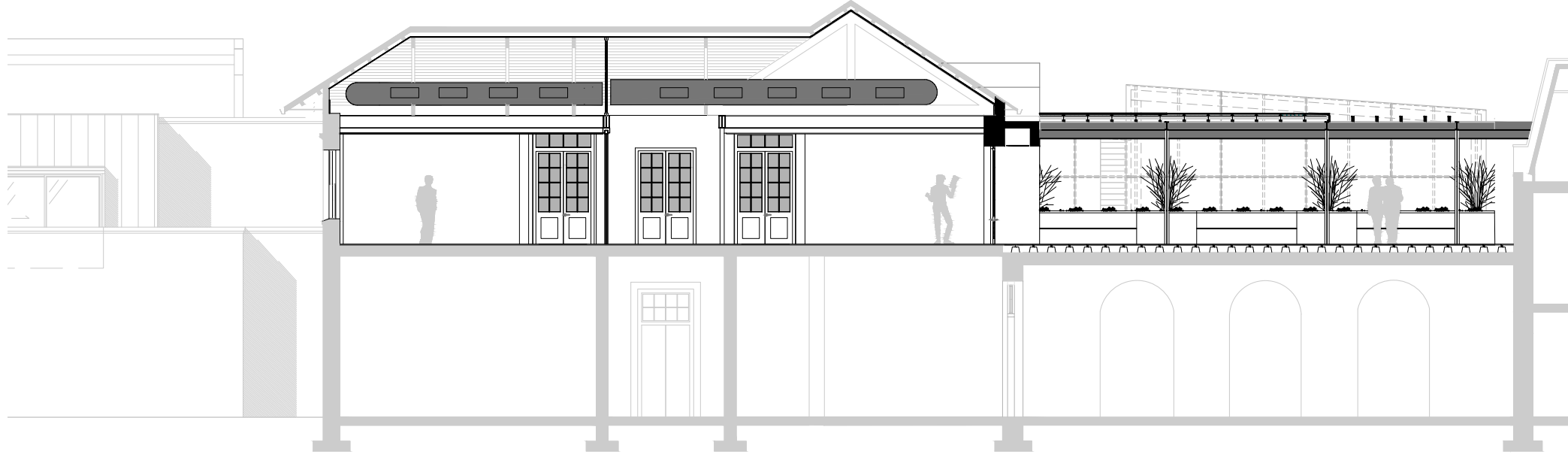
The Vineyard Hotel

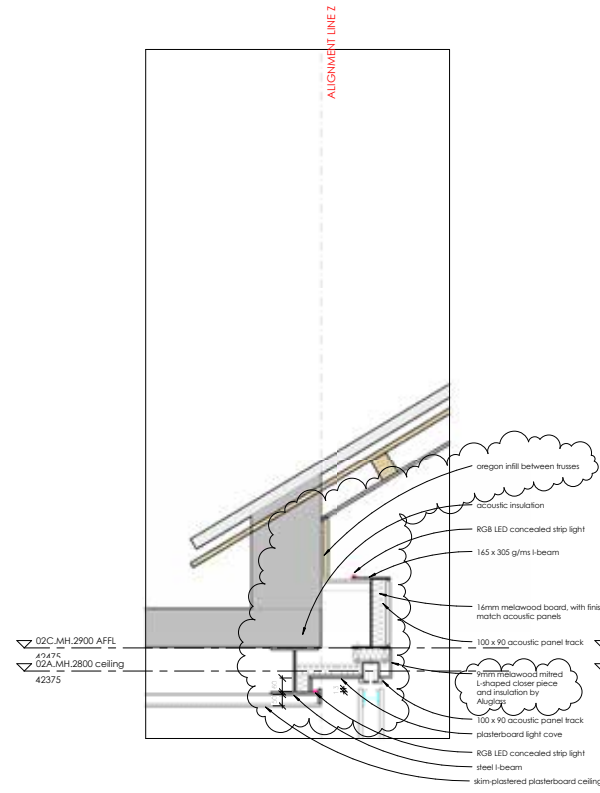
Claremont, Cape Town, SA

Lady Anne Barnard's historical Manor House was adapted to a range of conference facilities. The centuries old oak roof structure were exposed, and in the process the new services and structure too.

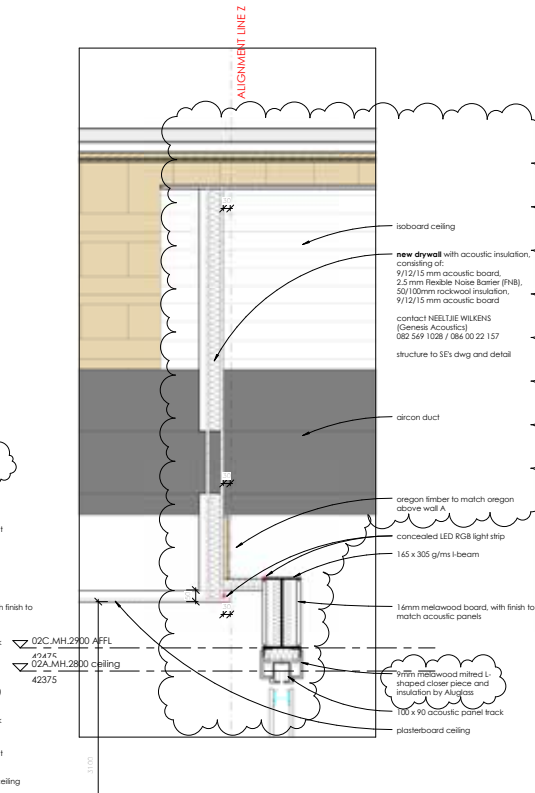
*design development, construction
drawings & construction*



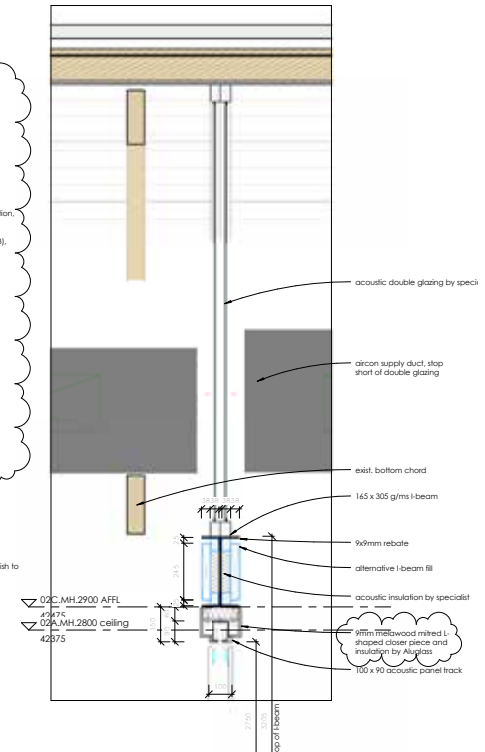




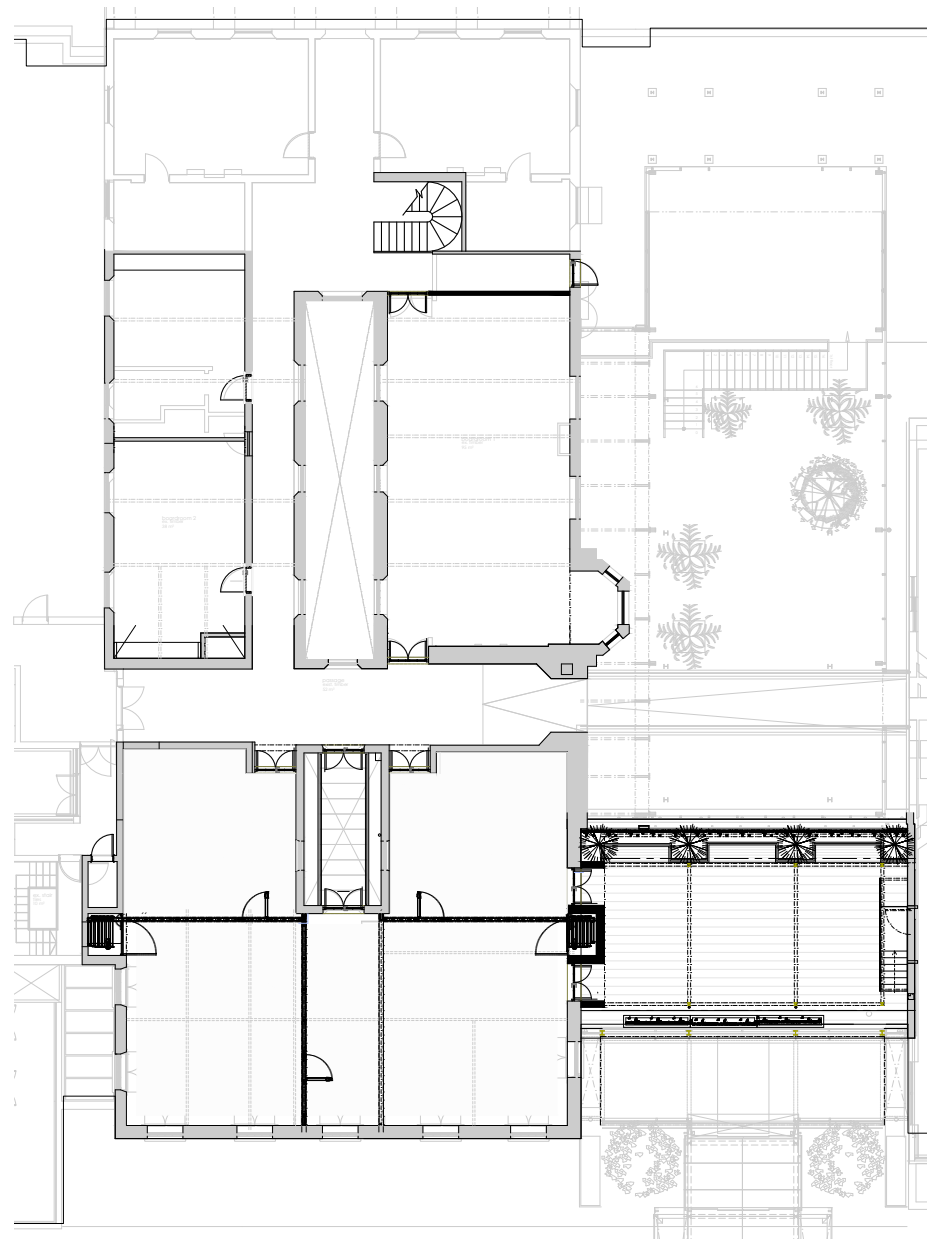
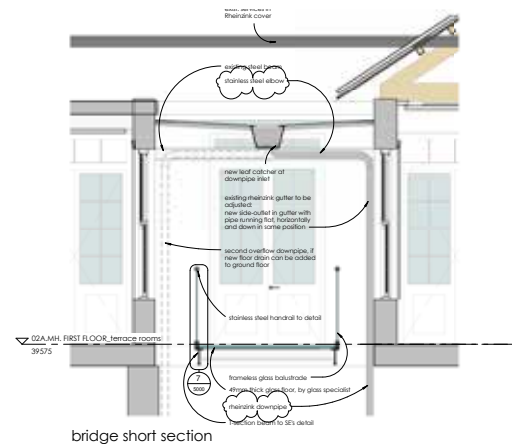
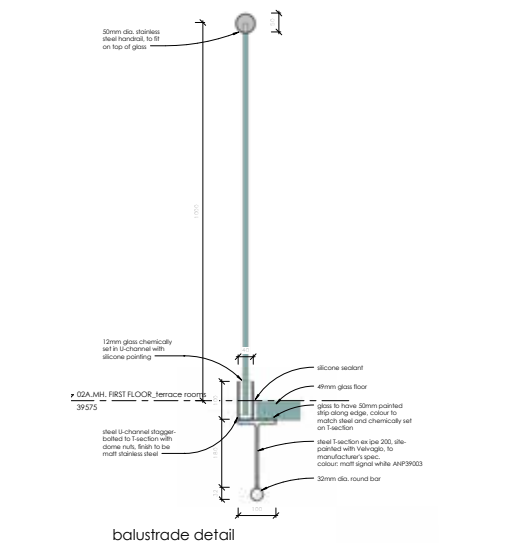
section through wall A
1 : 10



section through wall B
1 : 10



section through wall C
1 : 10



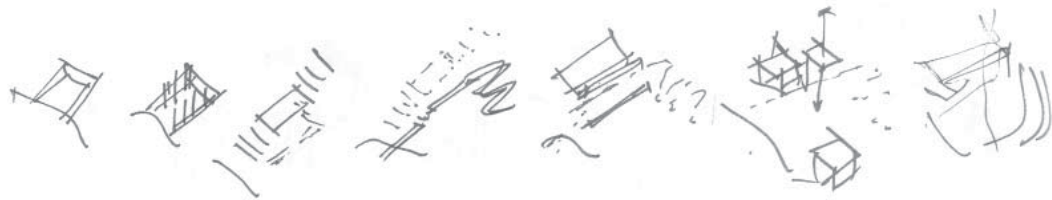


Fig. 1.03. The design components as a sequence of construction events.

2012 - 2013

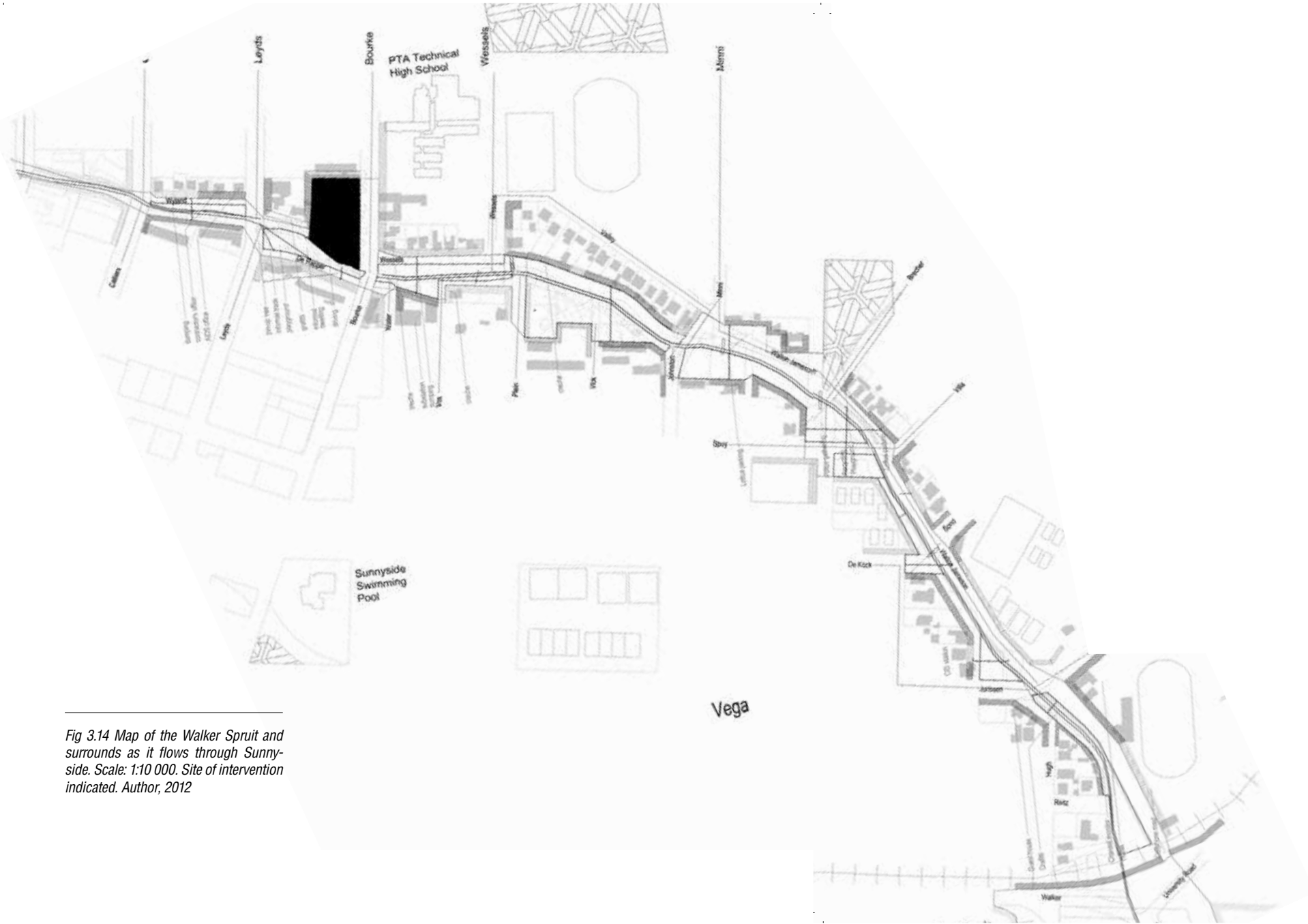
**31 Bourke Street -
an address for a new subjectivity**
Walkerspruit, Sunnyside, Pretoria, SA

Architecture is explored here as a series of effects that influence the experience of living on earth. This park/restaurant/theatre becomes a kind of terminal-of-effects and experience-making-machine that places those who encounter it in various relations with each other and their surroundings.

Master's Dissertation



Fig 3.14 Map of the Walker Spruit and surrounds as it flows through Sunnyside. Scale: 1:10 000. Site of intervention indicated. Author, 2012



territories
birdsongs

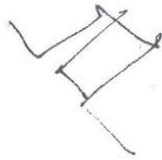


Fig. 3.02. Design component carve-out. Author, 2013

geologies
the song of the earth

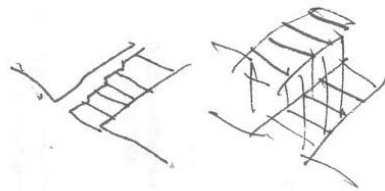


Fig. 4.02. Design component carve-out and lifted soil. Author, 2013

effects
the sound of the rain

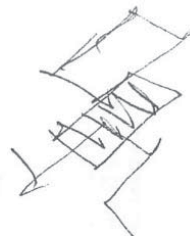


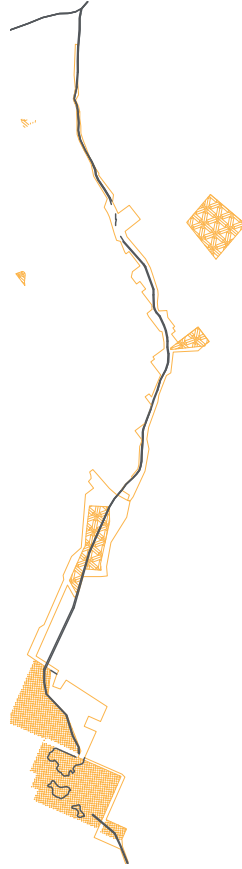
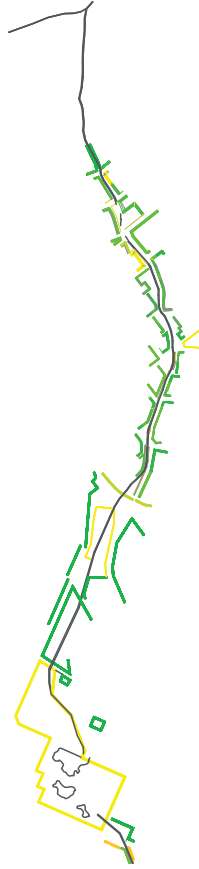
Fig. 5.02. Design component roof-wall-canal effects mechanism. Author, 2013

*white walls &
black holes*



Fig. 6.02. Design component curtains. Author, 2013

territories
birdsongs



geologies
the song of the earth



effects
the sound of the rain

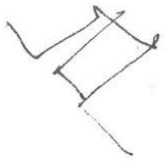


*white walls &
black holes*



design components

a schizo-analytical reading

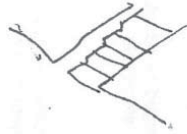


A

a carving out

Making a territory

A square bordering the Walker Spruit is carved out as terraces. The floodplain is altered in this way to intensify the effect of flooding, while the ground plane is terraced in order to retreat from water during a flood. This carved-out floodplain is programmed as an outdoor foyer, immanent with a flood. - awaiting a flood. In this way a territory is made with only a subtraction – the power of water to erode. At this stage no materials have been added. Only the sedimentation of compacting the soil terraces. An architecture of soil. By simply subtracting

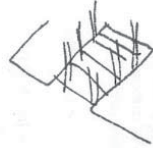


B

terraces intensifying the valley

First articulation of sedimentation

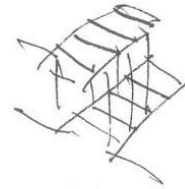
from the ground it is already possible to make architecture. The terraced soil is usable in this phase of the construction process, possibly not very practical, but usable. A whole range of events can already occur in this theatre-like space. This is the first articulation of stratification. However, a destratification is ensured by means of the floodplain. The first few steps will always be open to the possibility of flooding. It remains a plane of possibility. Getting wet when it rains is also a possibility – we can stay here as long as it doesn't rain. A second articulation of stratification is necessary.



C

totemic capitals & anti-gravity machines Refrains

A place is marked with the repetitive verticality of a grid of columns. Like the pegs in staking out a property during surveying, the columns reterritorialize the first strata. Each column is capped with a 'totemic capital' as a refrain element. The capitals also function as support for the second level's coffer slabs. A steel capital is fitted over a narrowing of each of the columns.



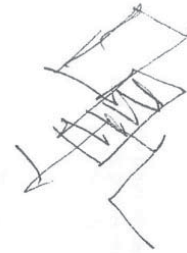
D

'soil lifted', a second level

Second articulation of sedimentation

Like a piece of cake, cut and lifted on its way to a plate, the building is a cutting-into and lifting-out of the ground. This opens up a space between strata to accommodate the program.

The terraced soil becomes the shuttering for the second process of stratification. A stepped re-inforced concrete coffer slab is cast in segments or modules to be crane-lifted into place on the next level. This creates a shelter against rain for the terraced theatre below as well as another programmable surface. The effect it releases is that of lifted soil (with all kinds of things cast in the soffits of this surface – to become a kind of banal archaeology).



E

a roof for the sound of rain

An effects mechanism

How to destratify this second articulation? Again with water and by creating more surfaces of possibility. The stage which moves between the two strata and the water-harvesting roof-wall-pond effects mechanism.

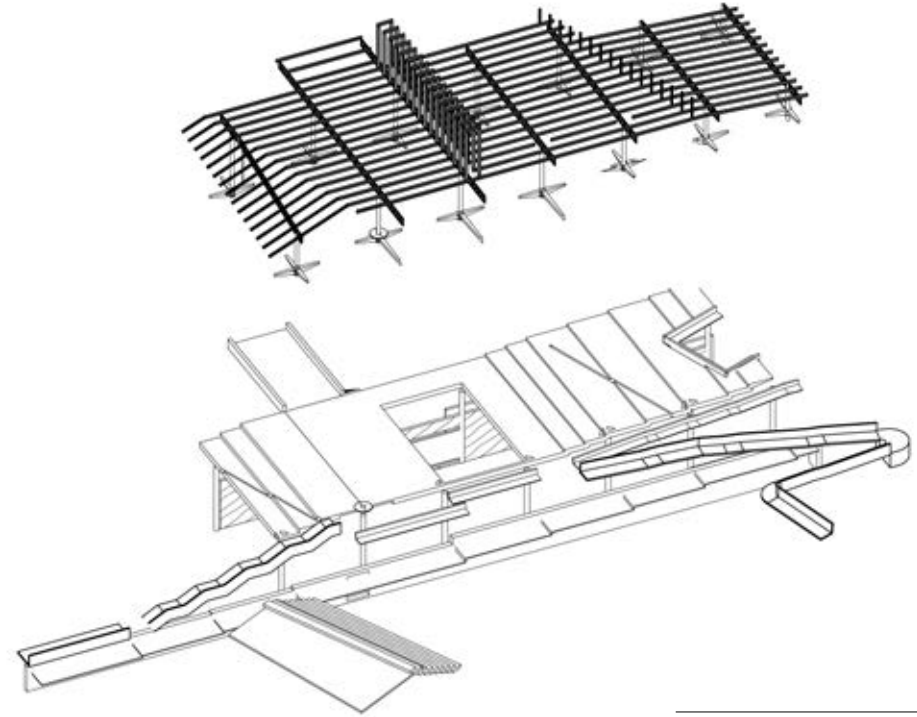
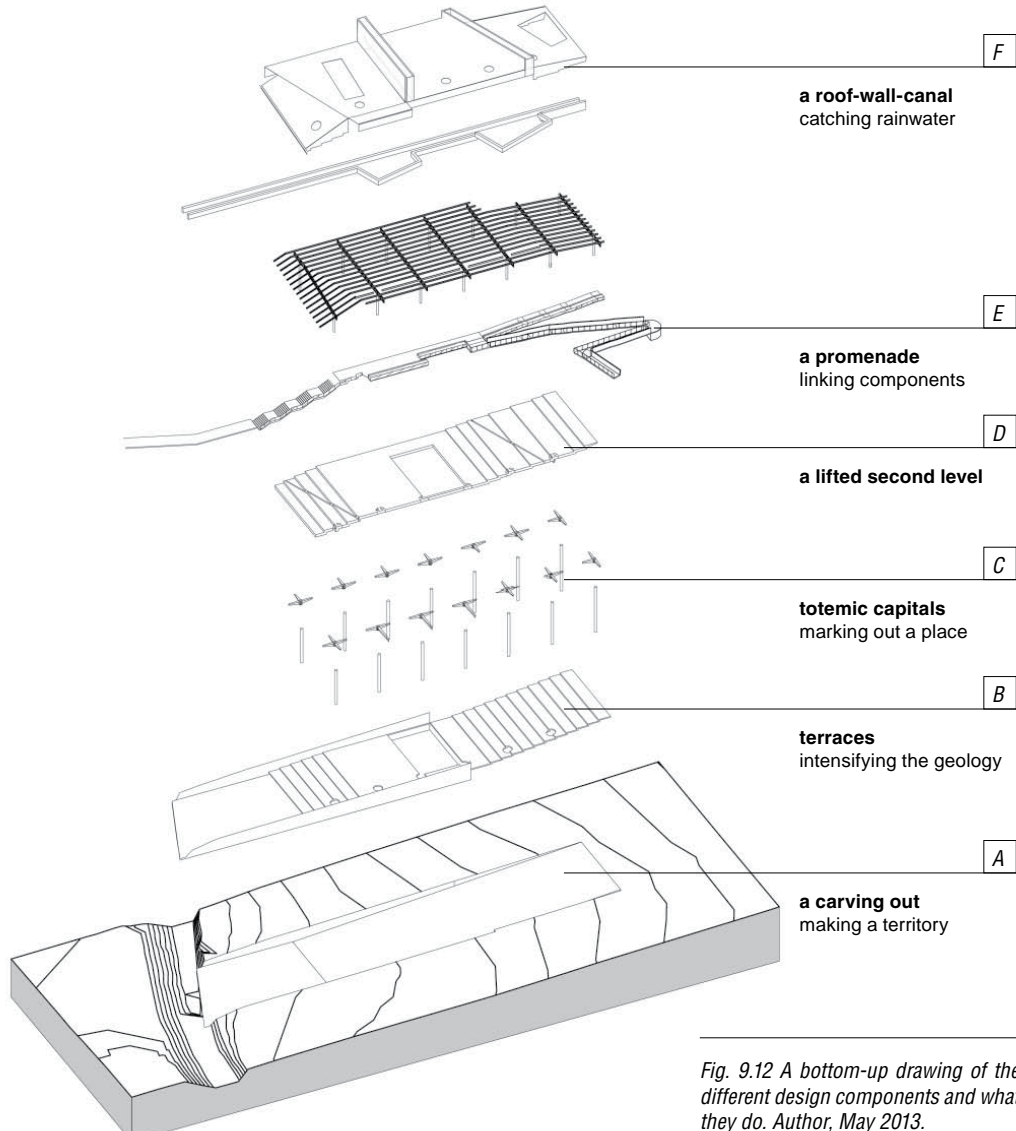


F

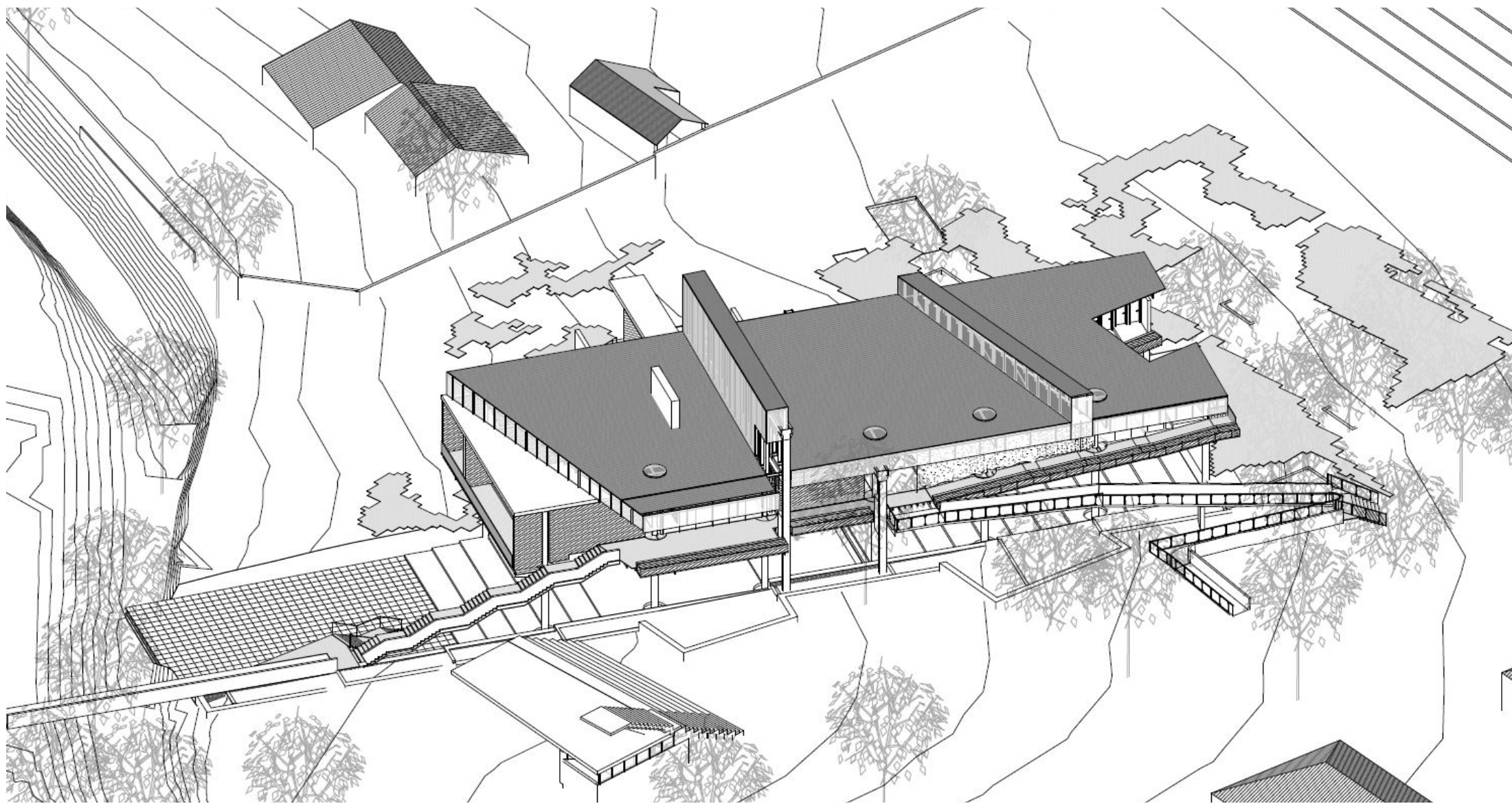
a promenade

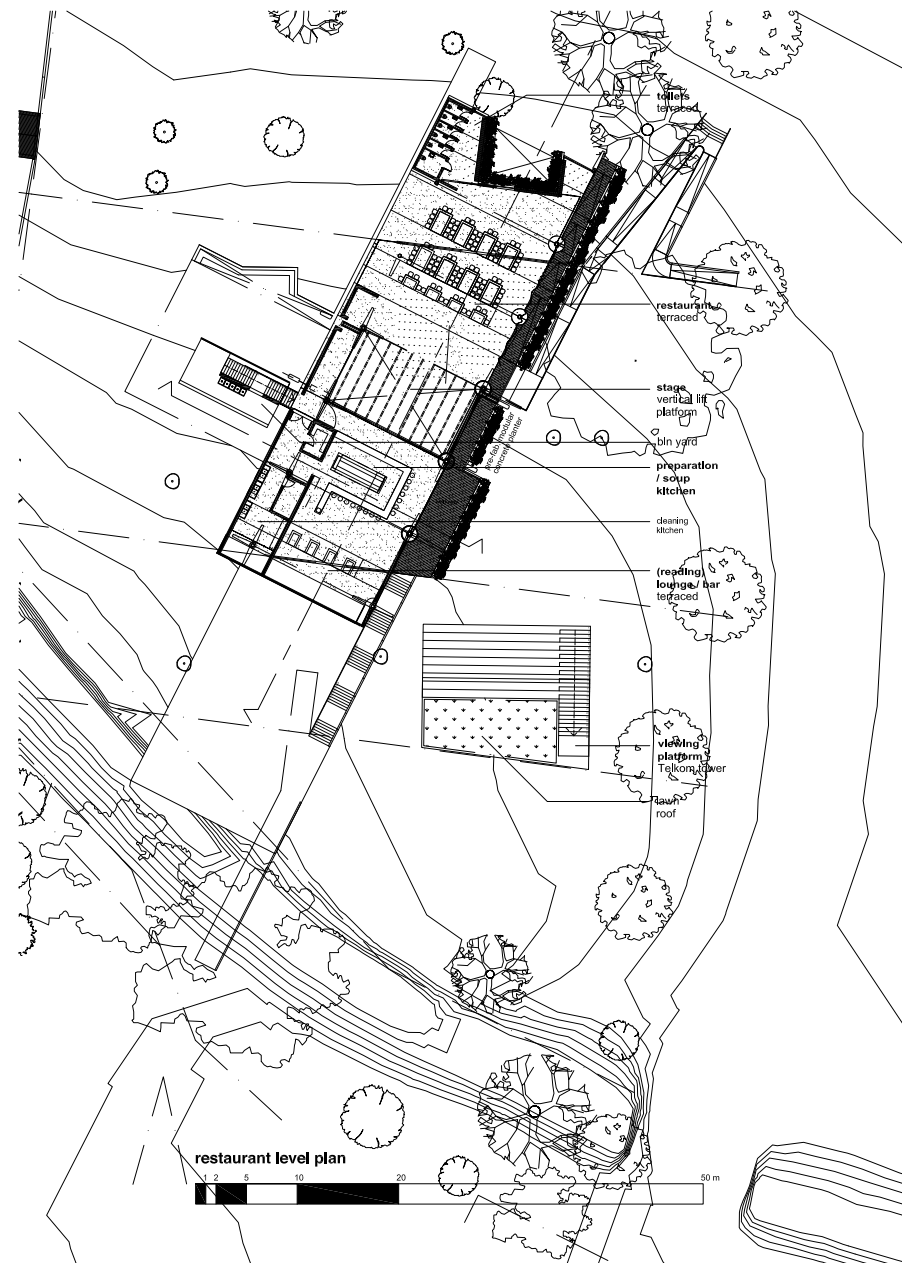
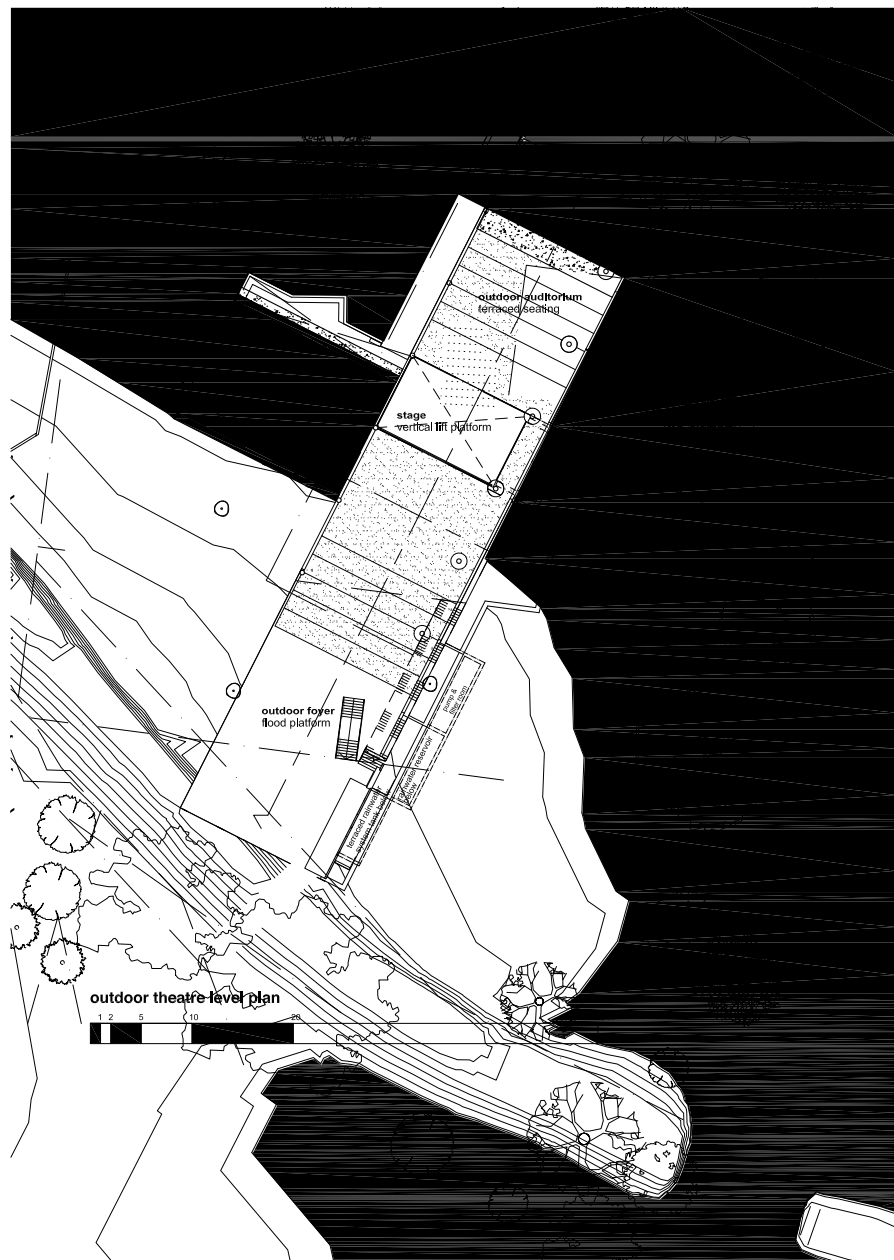
Catalyst for different effects

How to make these different stratifications, destratifications, territorializations and deterritorializations cohere? With the promenade as catalyst. The bridge-stair-stoep-ramp mechanism allows movement between different strata and effects – it creates a route.



*Fig. 10.09 Phase 1 structure (above),
phase 2 structure (below)*







2011
**Zwartkoppies Experimental
 Kitchen & Restaurant**
 Pretoria East, SA

Zwartkoppies is the historical farmstead of Sammy Marks (colonial industrialist). The manor house is currently operated as a museum, but the farm buildings left derelict. A strategy for these farm buildings was devised in a group. The farm manager's house, one of the farm buildings, was envisioned as a restaurant and cooking school. Here the traditional role of restaurant patron and kitchen staff is reversed and amplified. The patrons are placed on 'peanut galleries' as observers looking down on the kitchen staff operating in a stage-like setting.

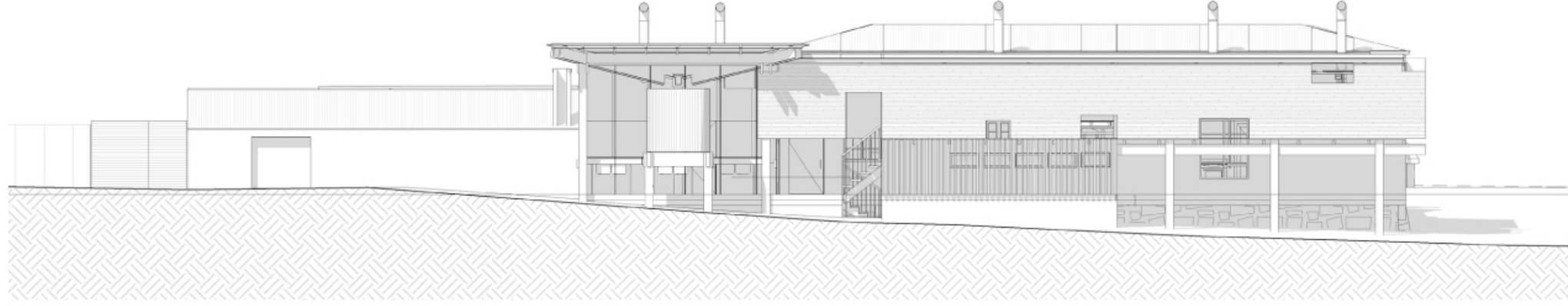
*Honours project - Research Field:
 Heritage and Cultural Landscapes*

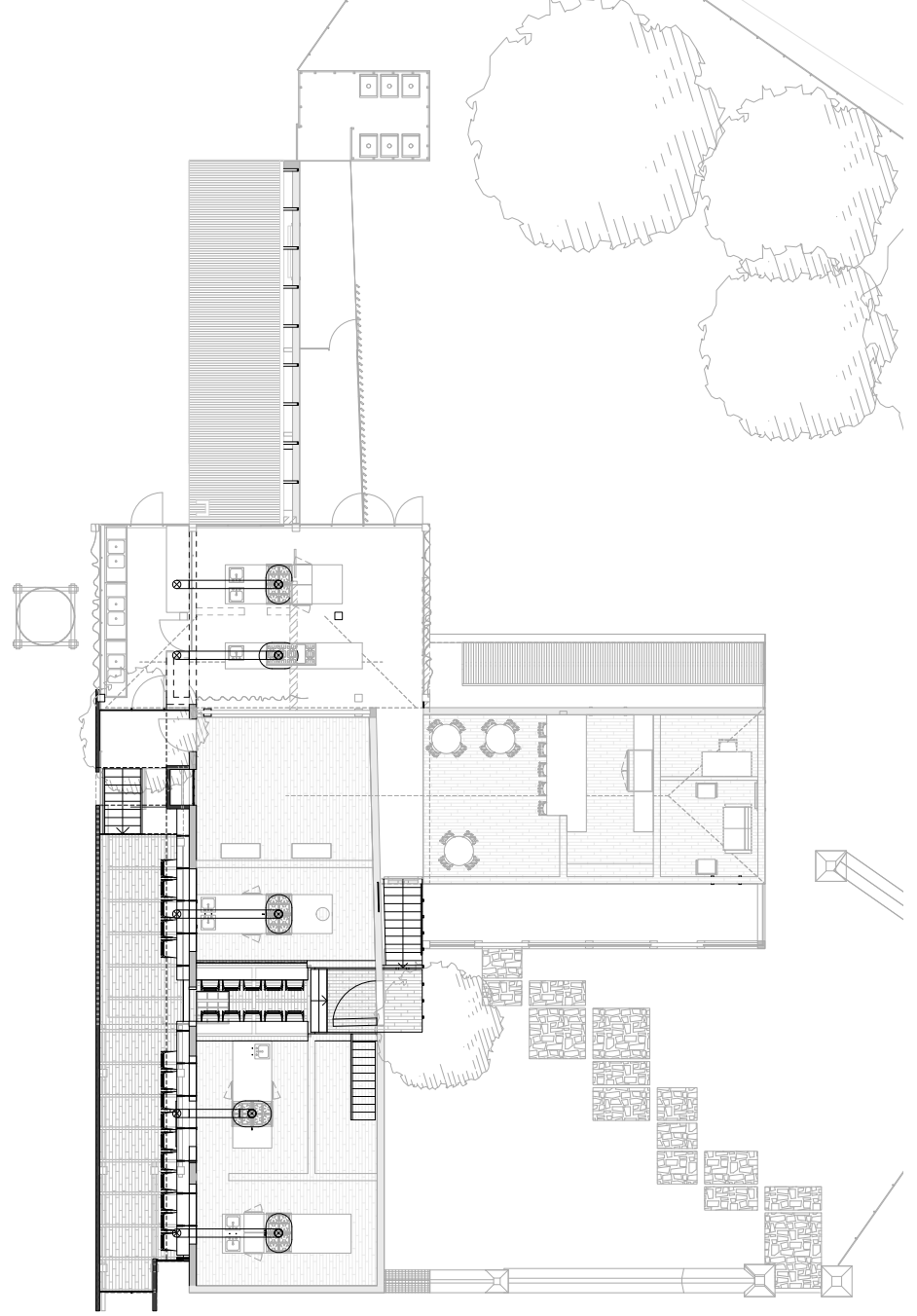
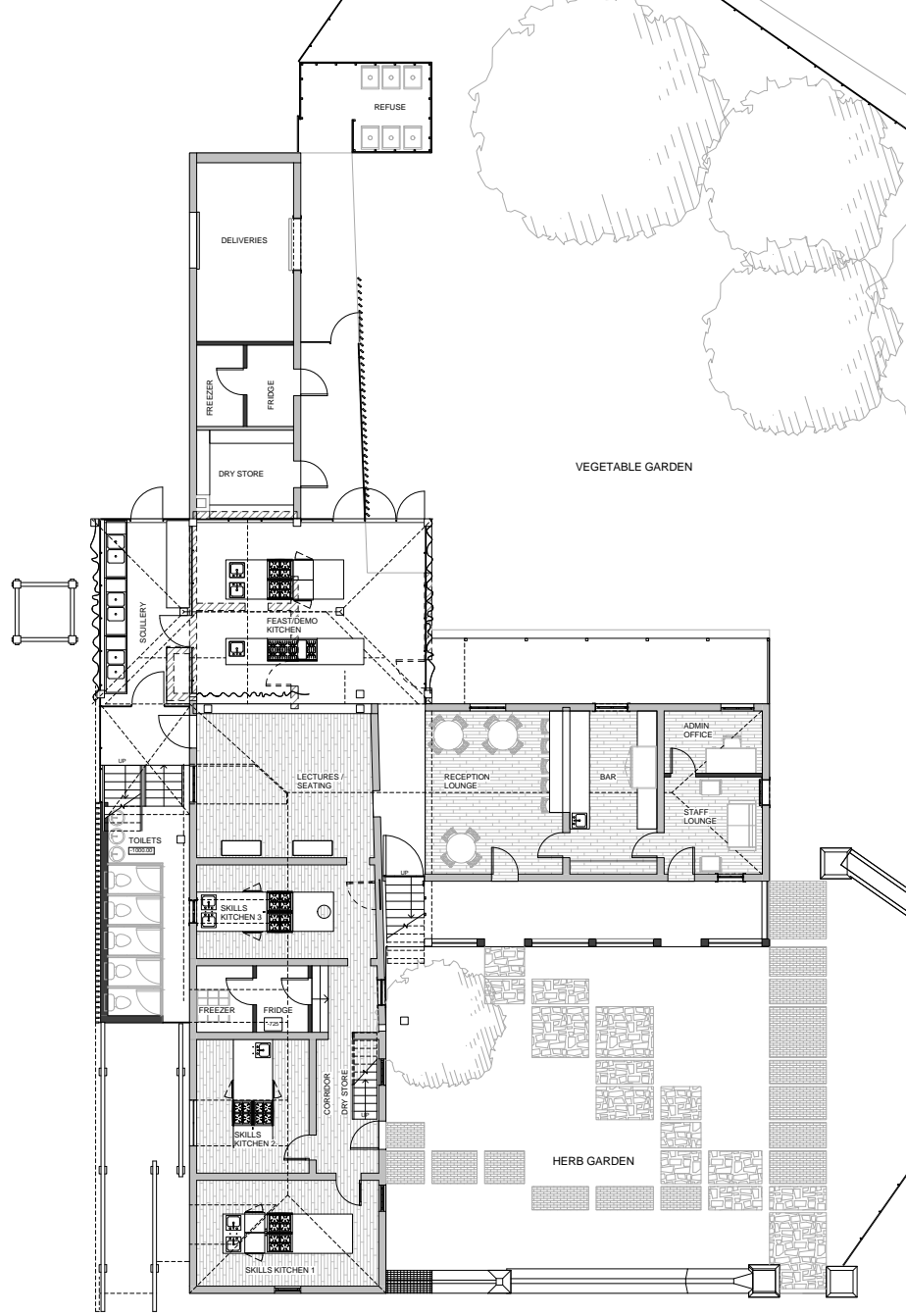


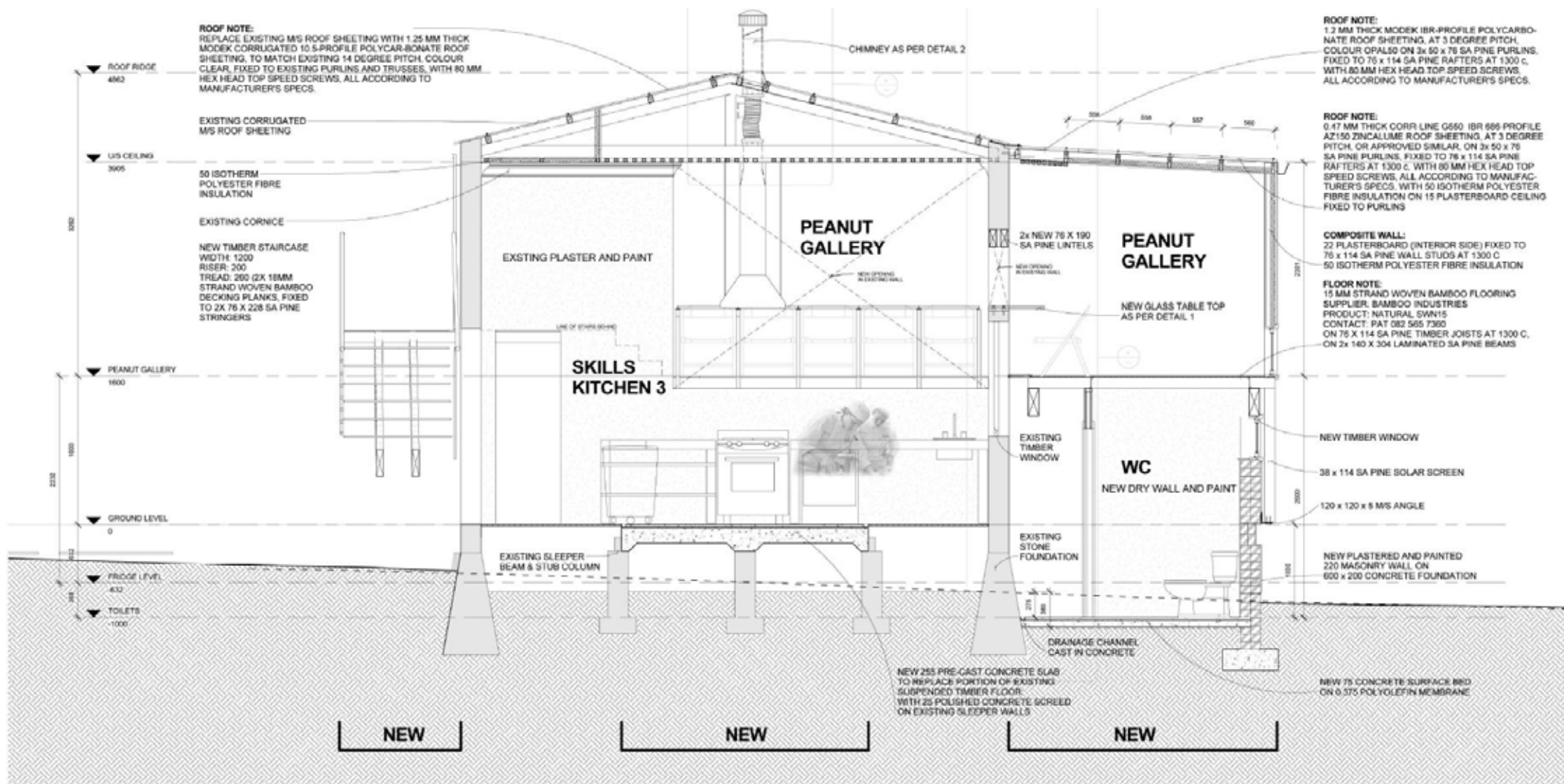










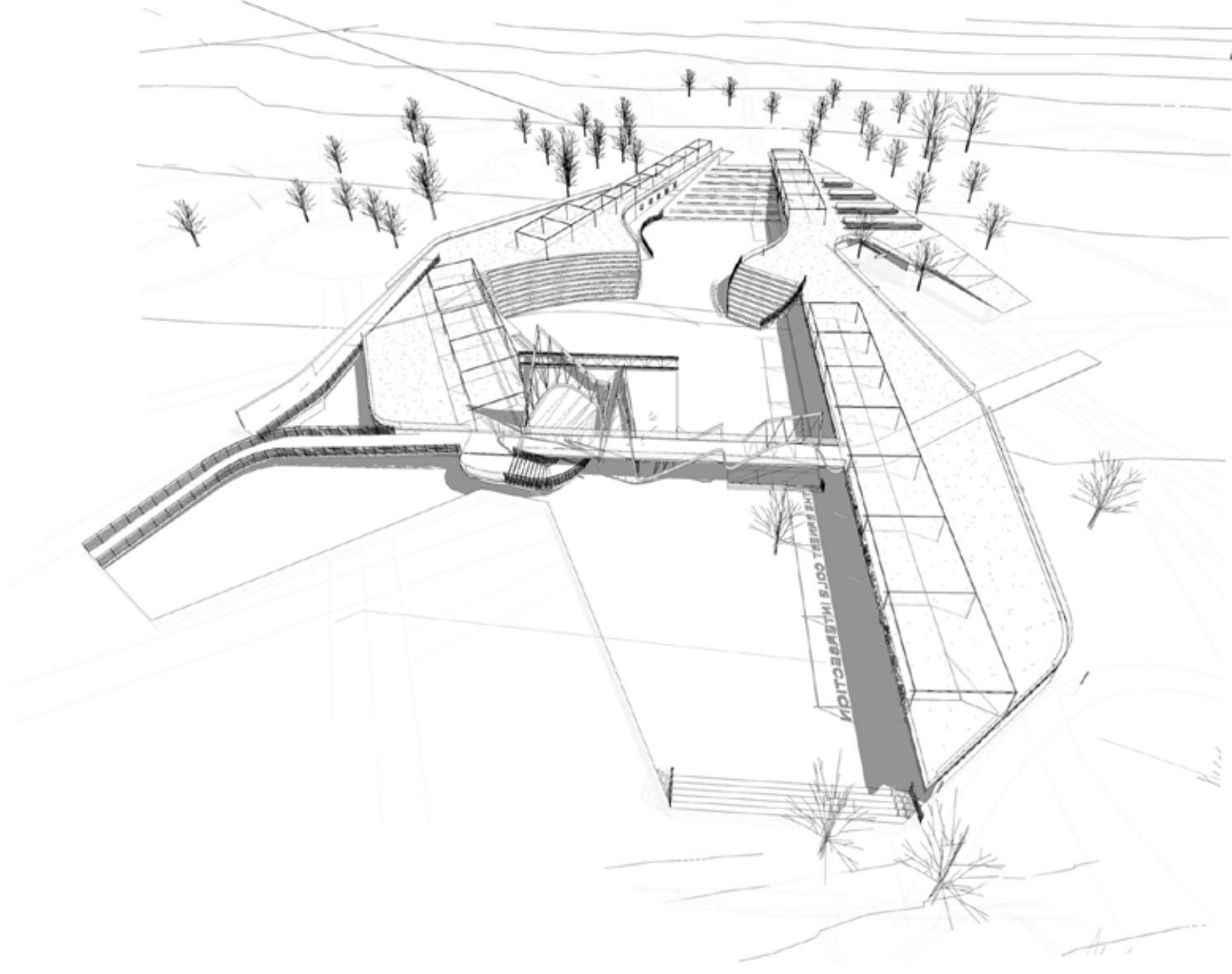
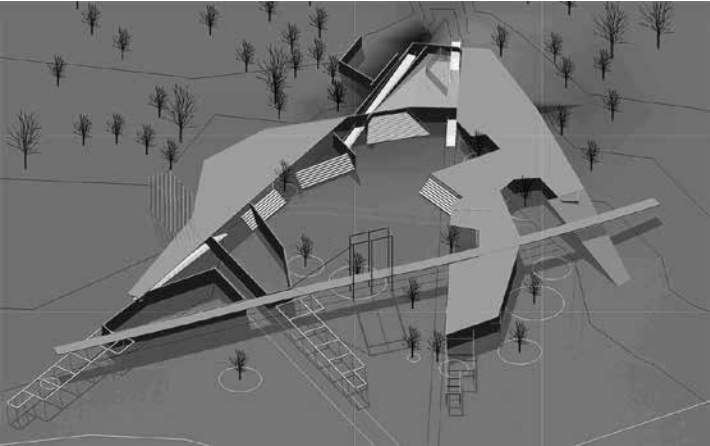
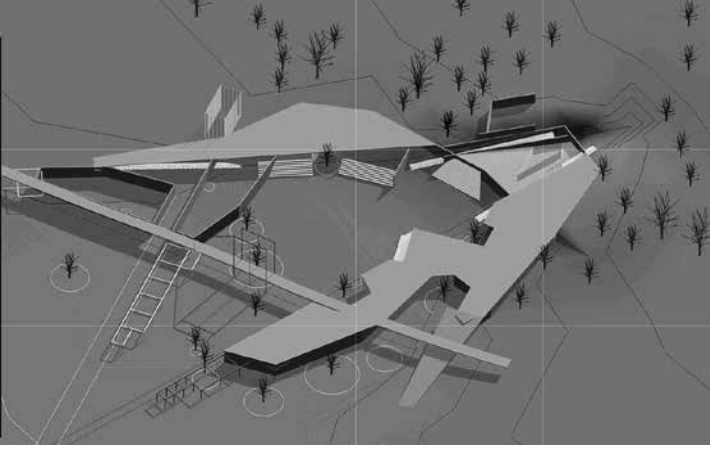
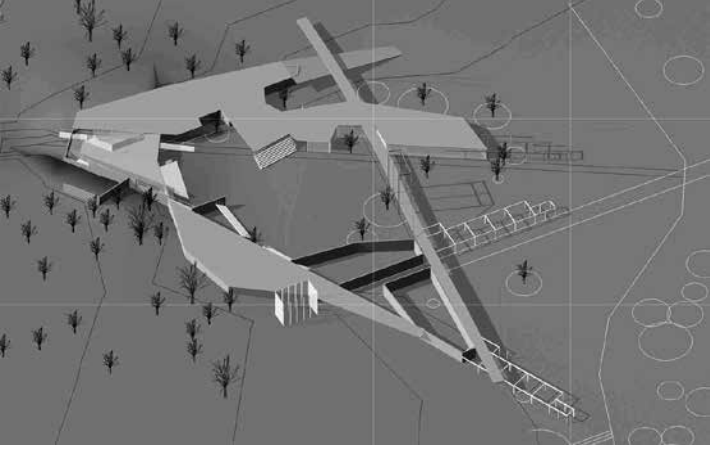


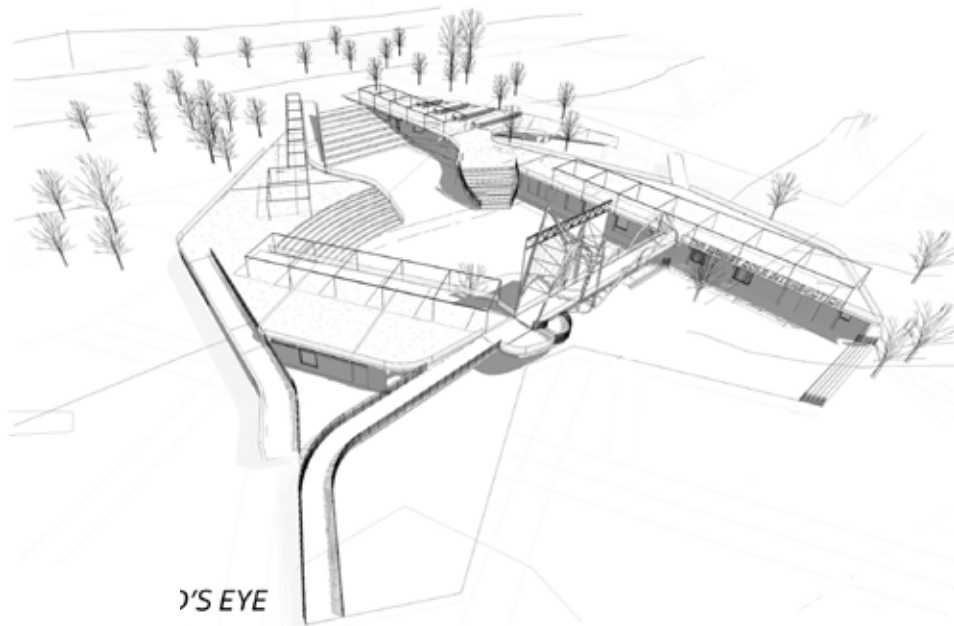


2011
Ernest Cole Intersection
 Eersterust, Pretoria, SA

The project engages with the problem of public space in contemporary SA by providing an activity park. Various skill-building workshops (cooking, dancing, singing, making) are housed in a 'buried' building, continuous with the landscape. Seven different routes meander through the park, each associated with a different kind of activity. The park commemorates Ernest Cole, who was born in Eersterust in 1940. He became one of the first photographers to publish the harsh realities of life under the apartheid regime to an international audience.

*BHons Arch. - Research Field:
 Urban and human settlement.*





west bird's eye view



north bird's eye view



2010

Production house

Textile plant

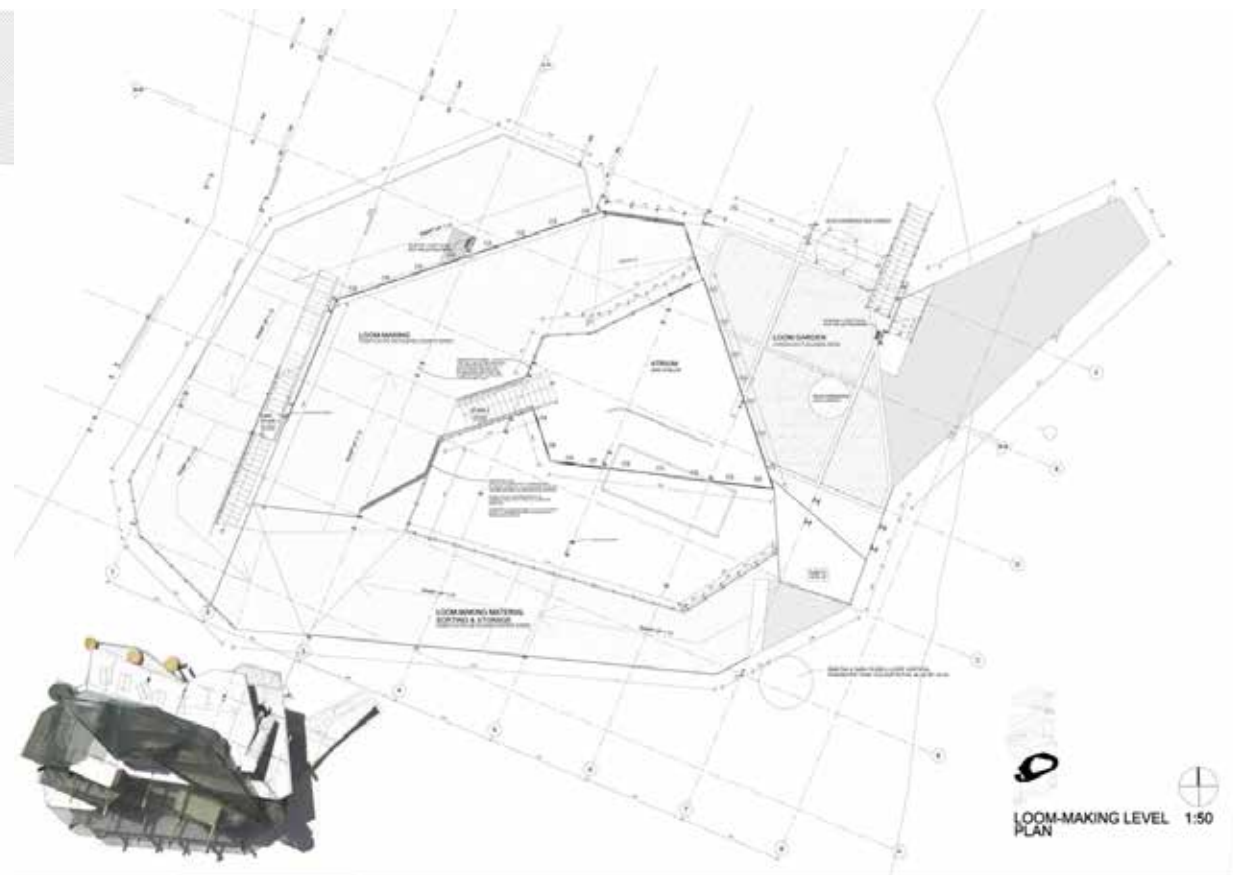
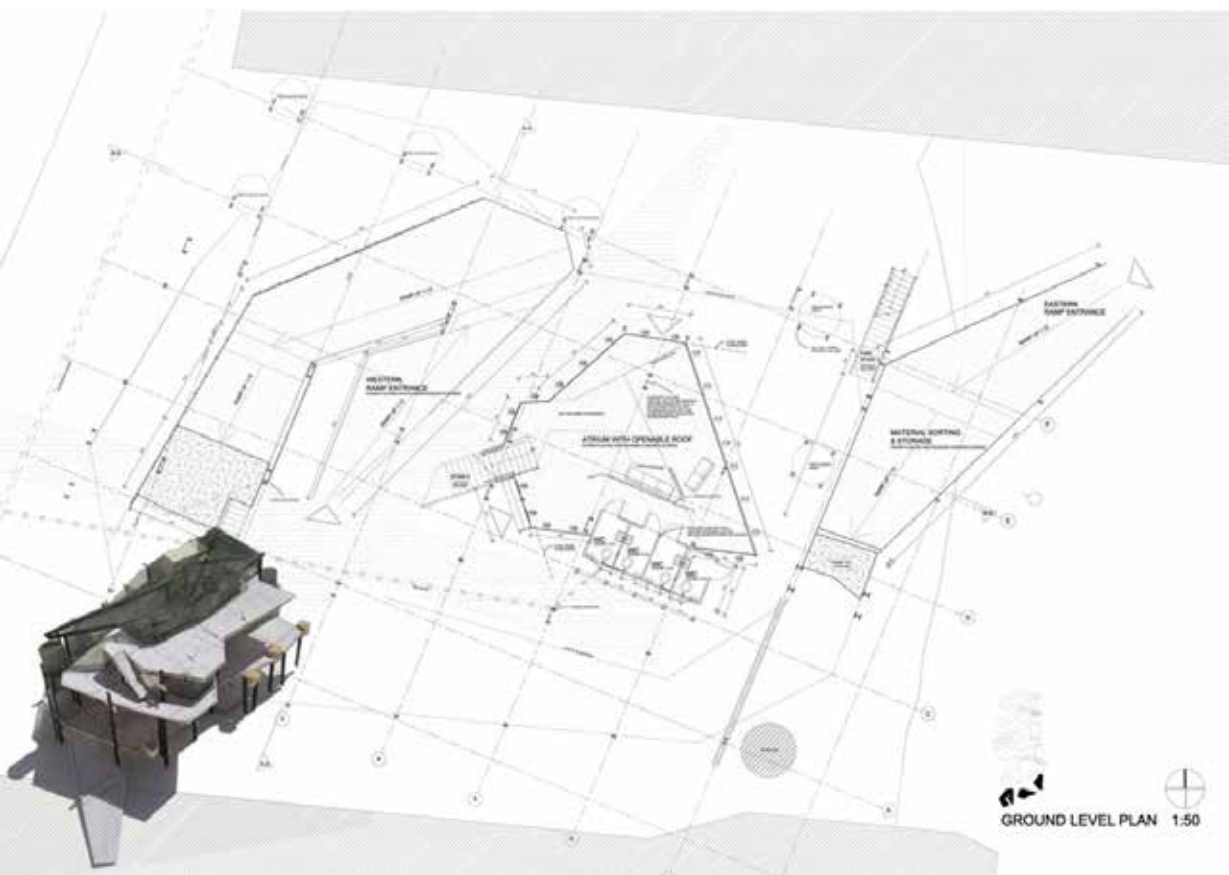
Recycling and weaving facility

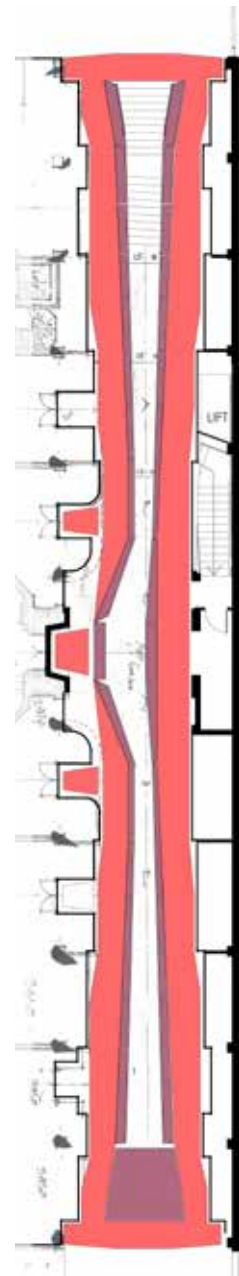
Nelson Mandela Rd, Pretoria, SA

The Textile Plant can be seen as a culmination of the three preceding third year projects. It draws from: the subject/body split explored with the Mudbath; situation-as-programming and the continuation of an infrastructural urban surface from the Feeding Cage and the informal use of space from the Container Housing. The building houses the making of looms and the subsequent weaving of recycled materials. A continuous ramp acts as extension of the sidewalk, where the trolleys/carts of informal recyclers are pushed or pulled up into the building. By providing employment, the building then metaphorically aids in the weaving of an urban fabric. Diagrams of exteriority (from Peter Eisenman) were used for figuration of the ramp, to create a certain distance between the author and his work.

BSc. Arch. - Third year project





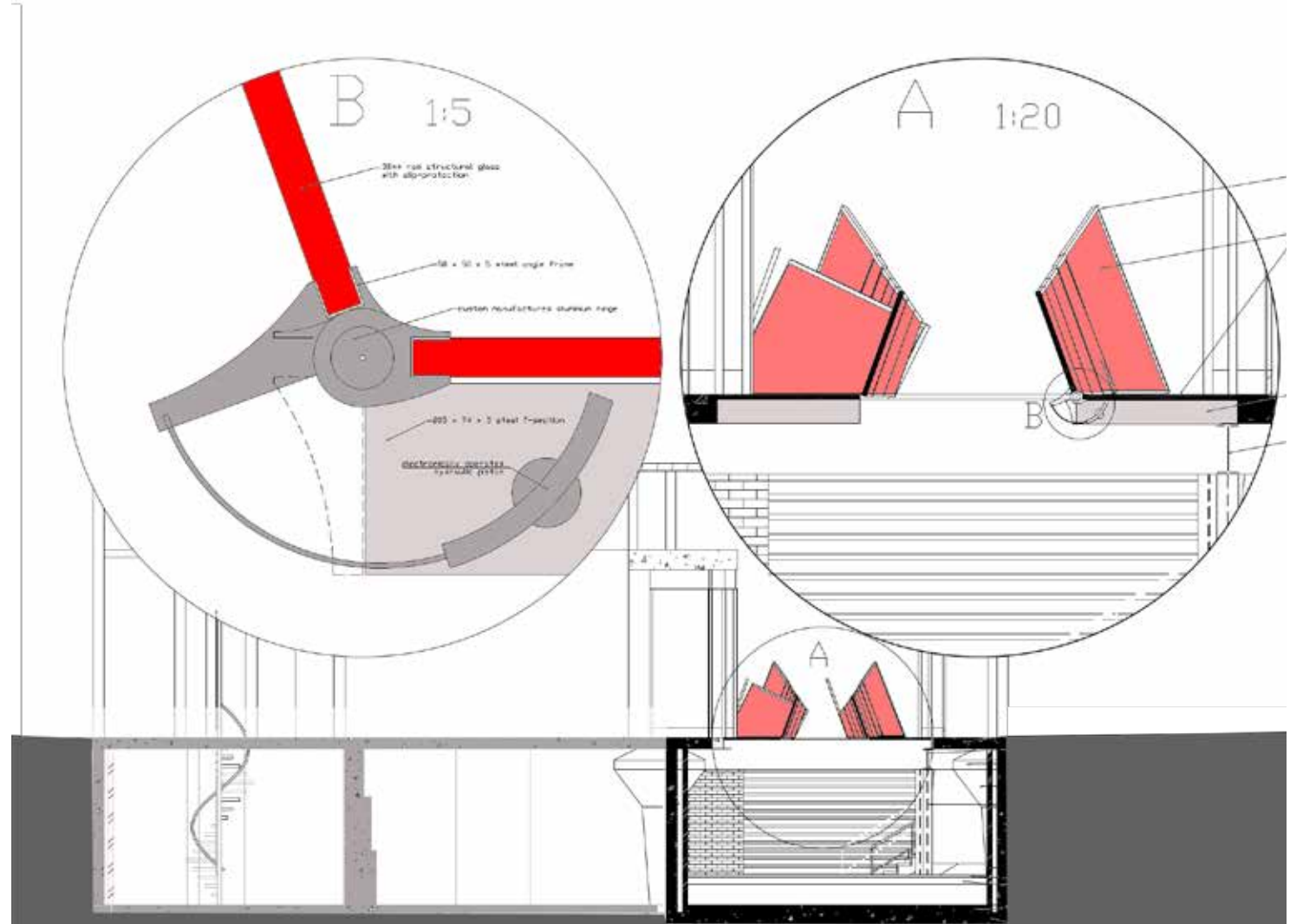


2009
Burlington Arcade Jazz Club
 CBD, Pretoria, SA

Burlington Arcade is transformed into a strip of light, close to the heart of inner-city Pretoria, Church Square. The existing pavement of the arcade (not original), is replaced with an openable glass floor to provide access and light to the enlarged basement. The symmetrical figuration of the glass floor surface is derived from the art deco treatment of shop entrances. The floor is opened after business hours, when the arcade is changed from a pass-through-place to a destination – a jazz club. Accommodation for musicians and a practice room is added in the service passage at the Western side of Burlington House.

BSc Arch. - 2nd year studio





BSc Architecture

University of Pretoria, 2010

122 Container Housing



2011

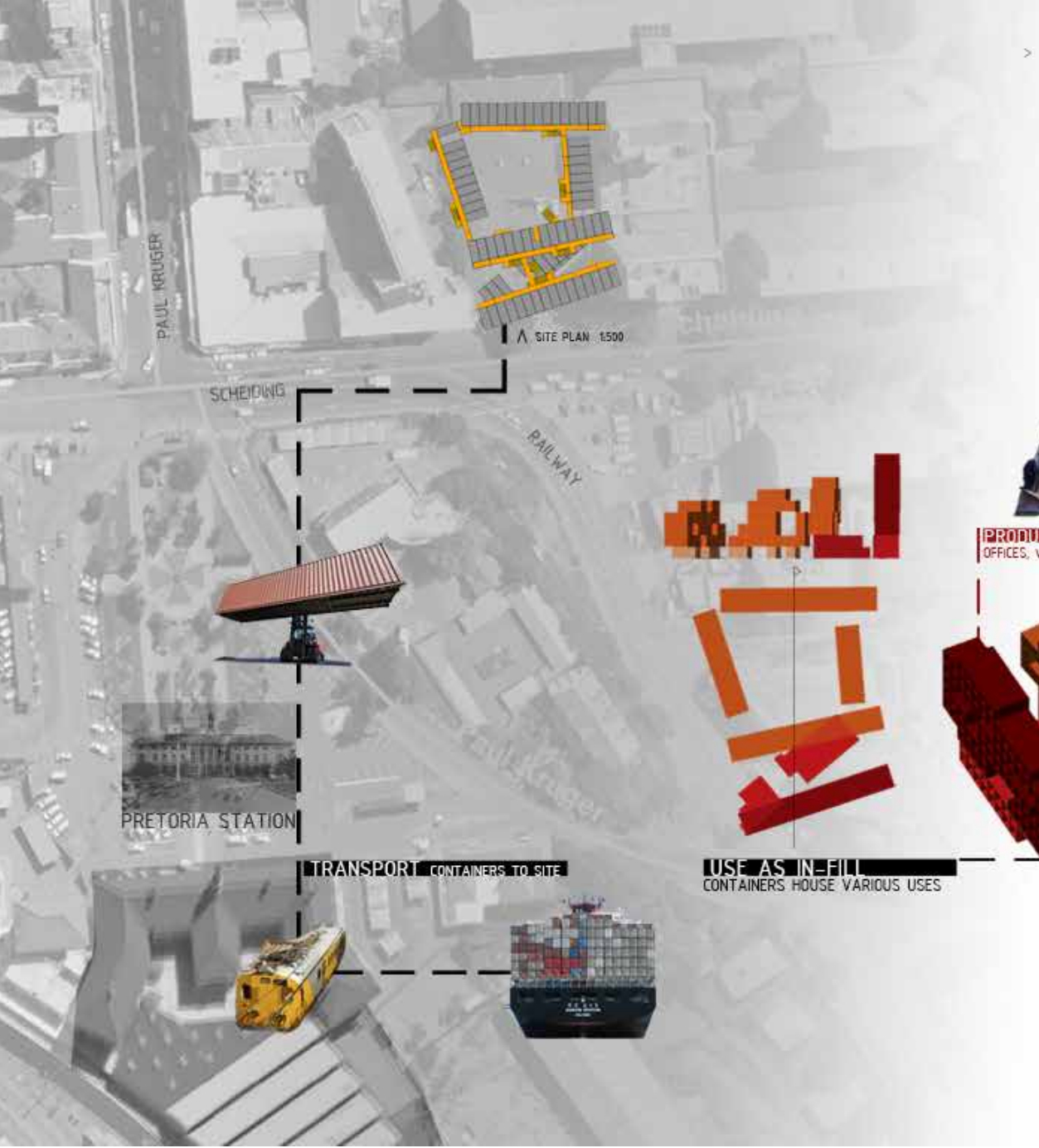
SHIFT Housing project

Container housing

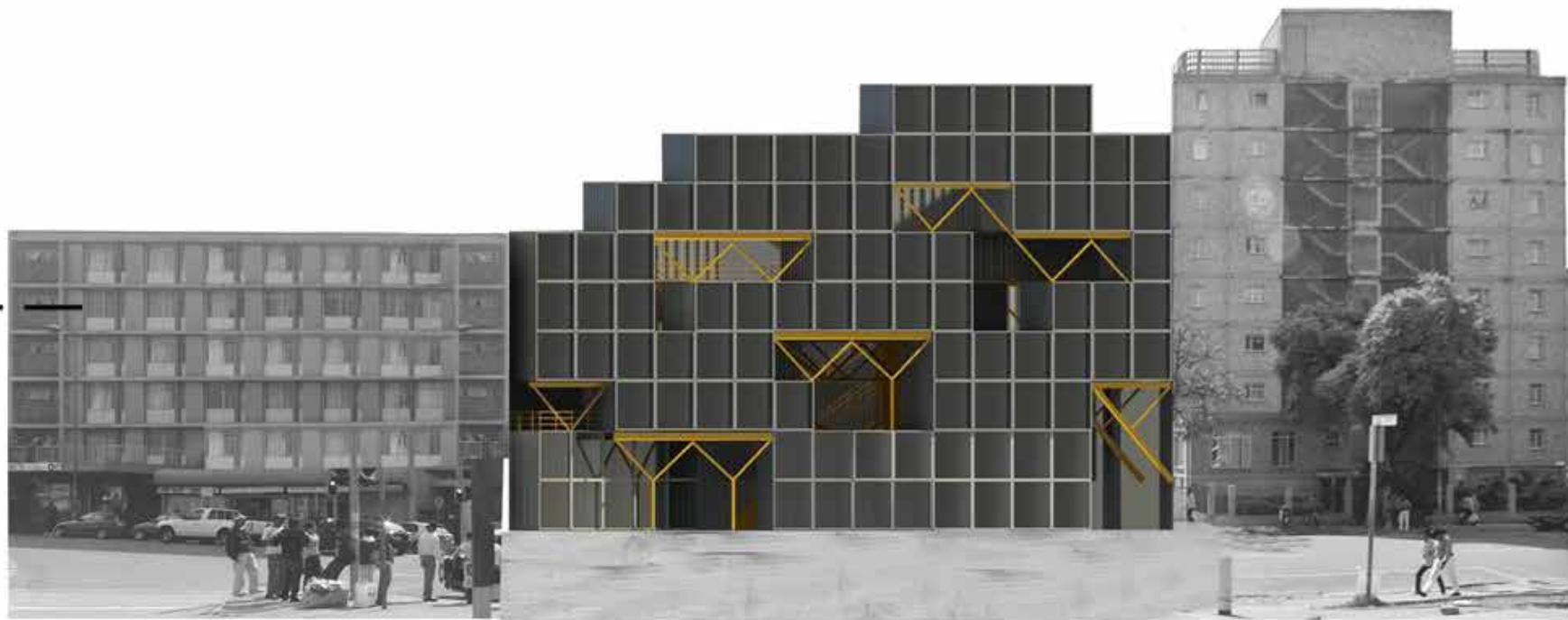
Station Precinct, Pretoria, SA

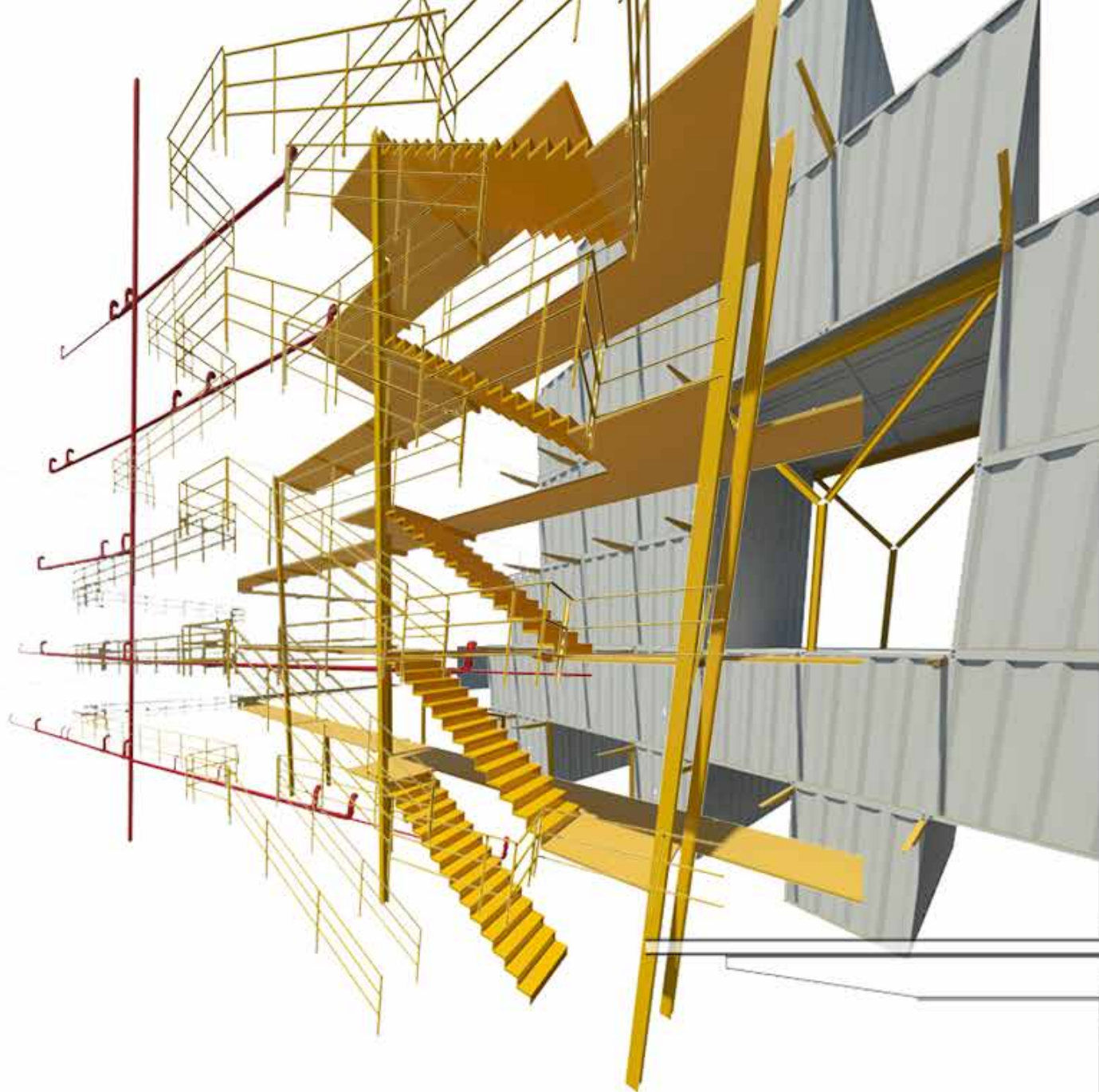
Tshwane/Pretoria as a post-apartheid city is characterized by great distances between rich and poor and subsequent urban sprawl. The modern form of the inner-city is often filled-in with more informal situations. Many of its residents ensure their economical survival by means of informal trade and services. The notion of in-fill was applied on three scales to conceptualize sustainable social housing: Scale one or urban form as in-fill, where the city is densified (and commuting distances shortened) by building inbetween existing buildings; Scale two, or shipping containers as infill, where salvaged containers fill-in a serviced structure; scale three, or use as in-fill, where users appropriate these containers with production, trade, social and dwelling activities.

BSc. Arch. - Third year project

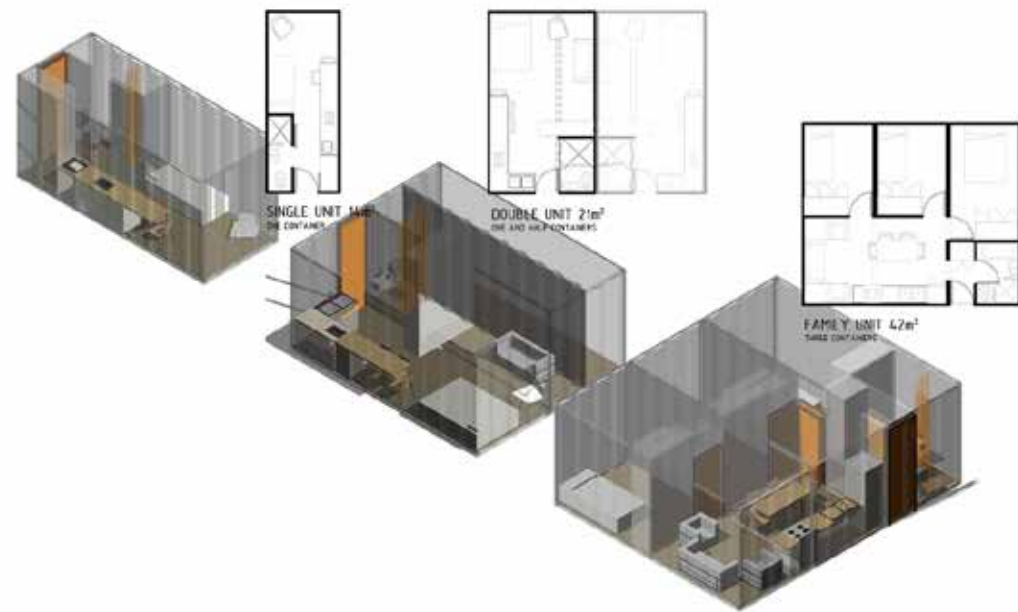


FORM AS URBAN INFILL
STREET EDGE DEFINED BETWEEN
EXISTING BUILDINGS





DETAIL SECTION 1:20
CONTAINERS AS IN-FILL



RESIDENTIAL

Hans Viljoen Architect

- 134 House Viljoen
- 142 Apartment Achmat

ST&AR Stuart Thompson & Andre Rademeyer Architects

- 156 House Hetherington
- 162 House Espitalier

BSc Architecture

University of Pretoria, 2010

- 170 House for a blind writer

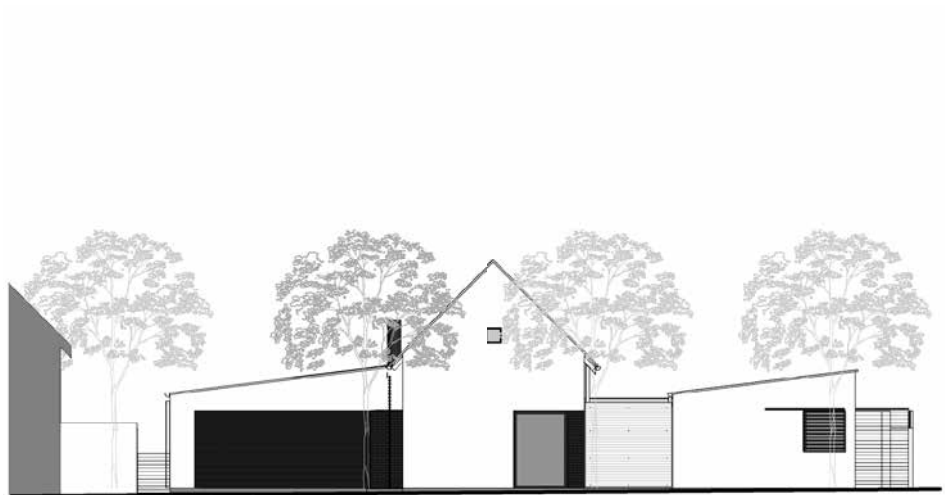


2018
House Viljoen
Potchefstroom, North-West, SA

A new 220m² house was designed in response to the 'Transvaal' tradition of simple pitched roofs - an exercise in restraint and minimal design.

concept to construction

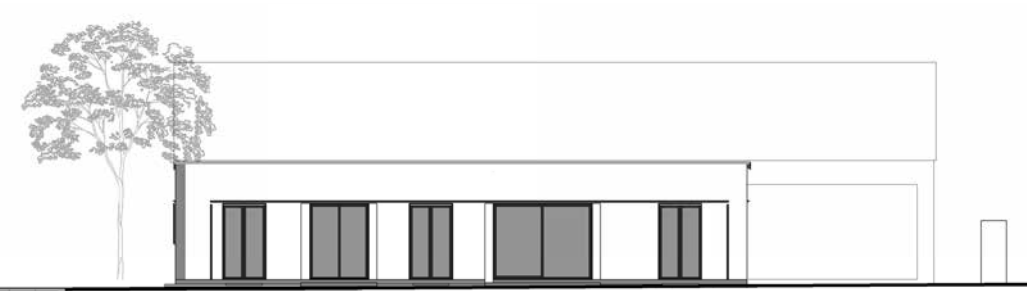




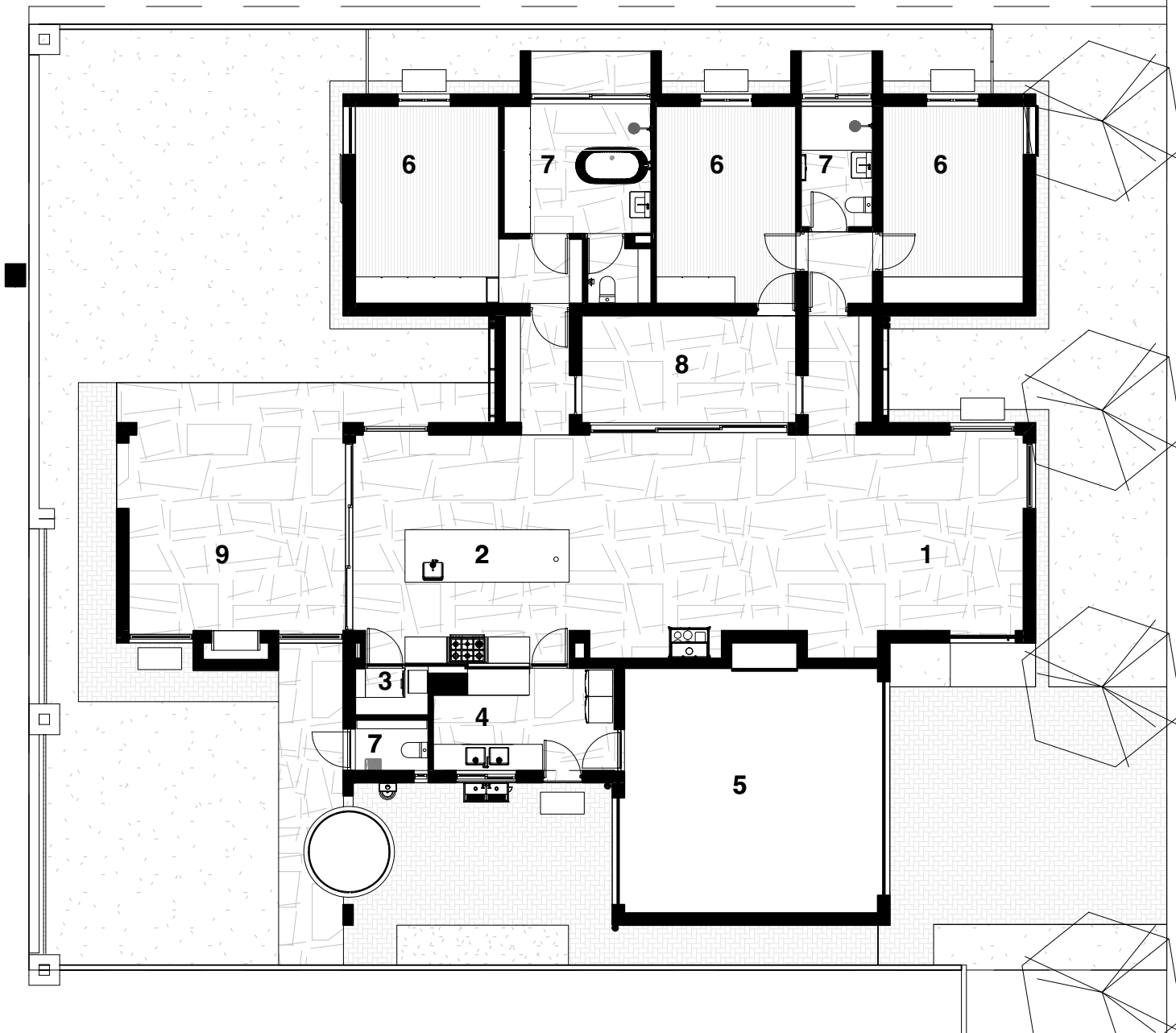
east elevation



north elevation_living

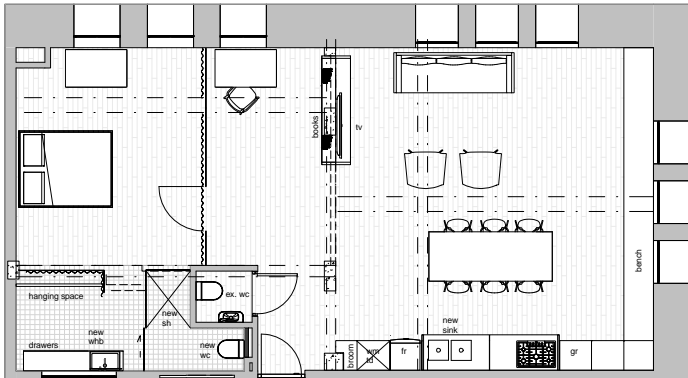


north elevation_bedrooms



ground floor plan

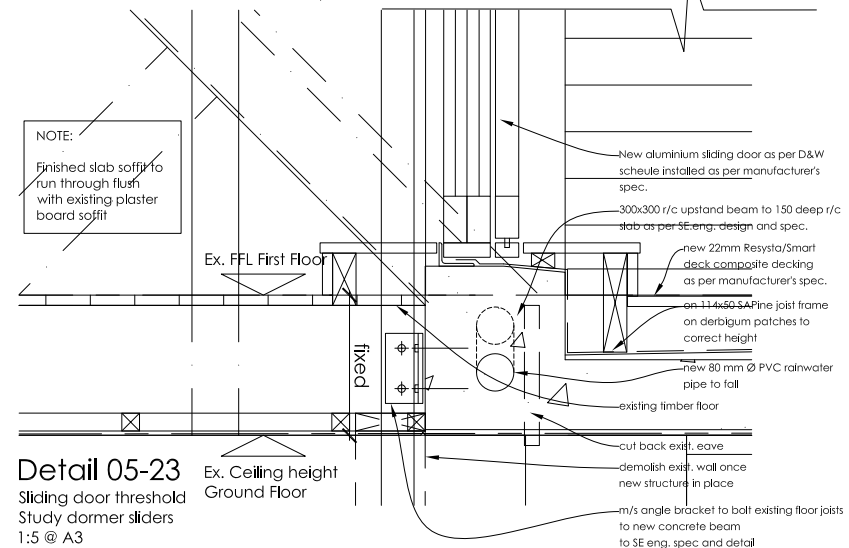
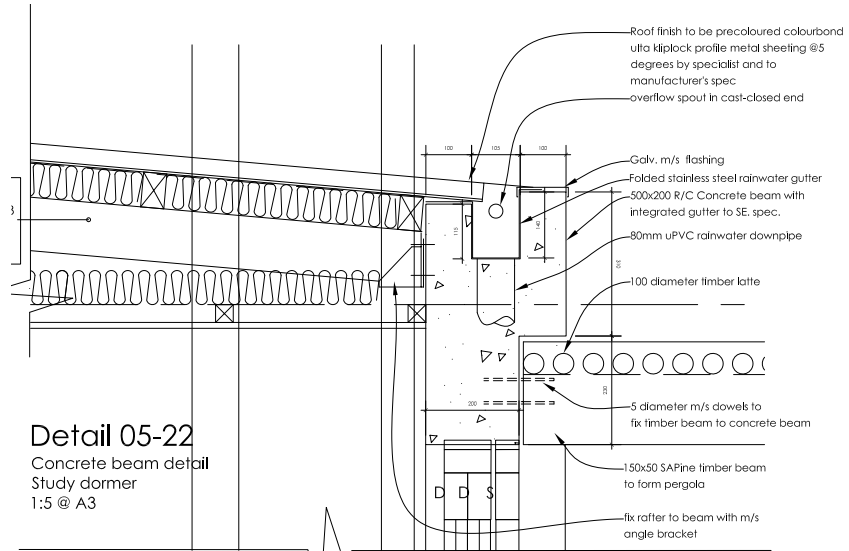
- 1 Living / Dining Room
- 2 Kitchen
- 3 Pantry
- 4 Scullery
- 5 Garage
- 6 Bedroom
- 7 Bathroom
- 8 Courtyard
- 9 Covered Porch



2017
Apartment Achmat
 Cape Town CBD, SA.

To the client's request, this existing 100m² apartment across Cape Town Railway Station is renovated to minimalism. A simple new kitchen and bathroom forms the major part of the renovation. Existing partitions are removed and replaced with glass partitions and curtains for privacy.

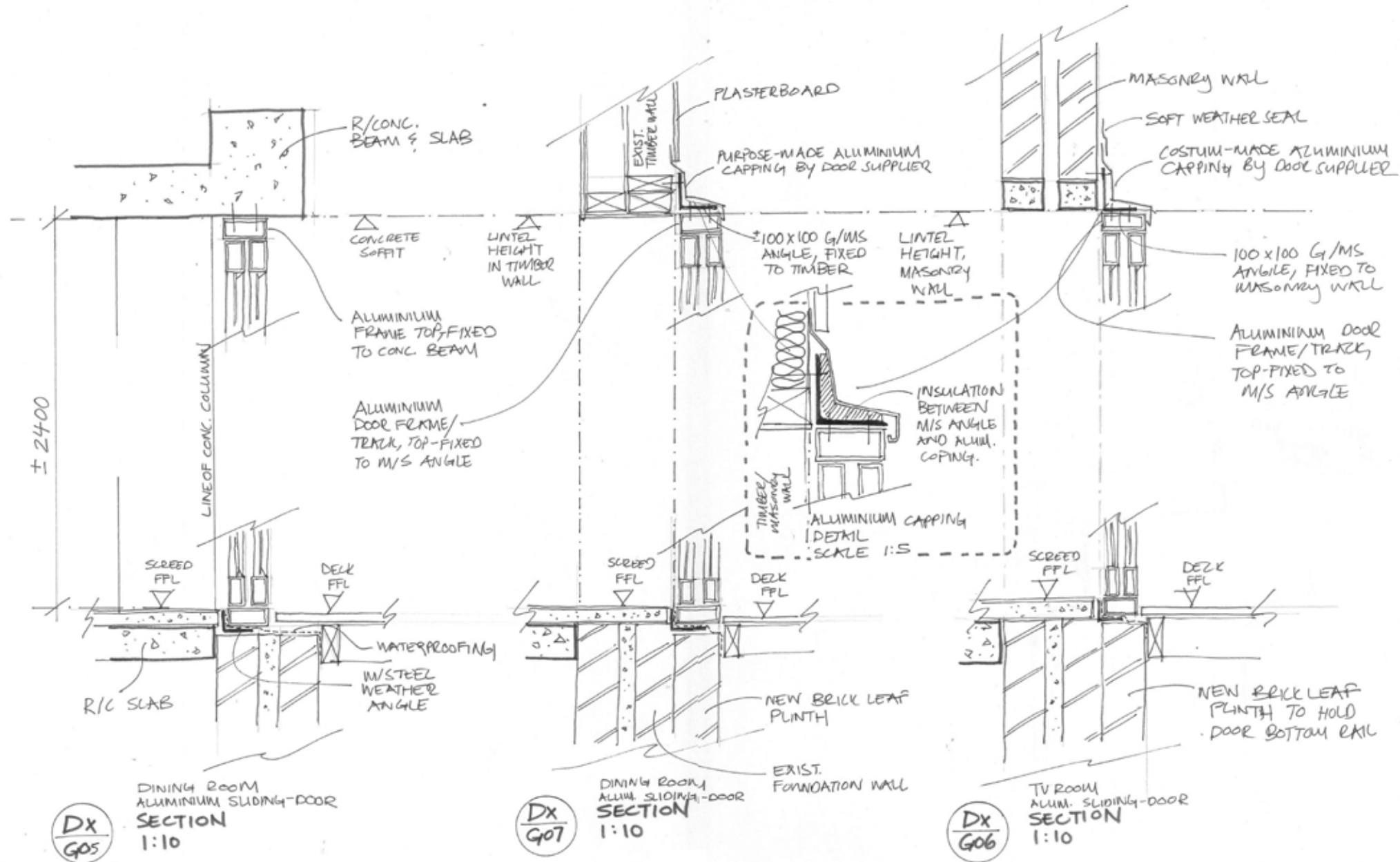
concept, design development, council approval, construction



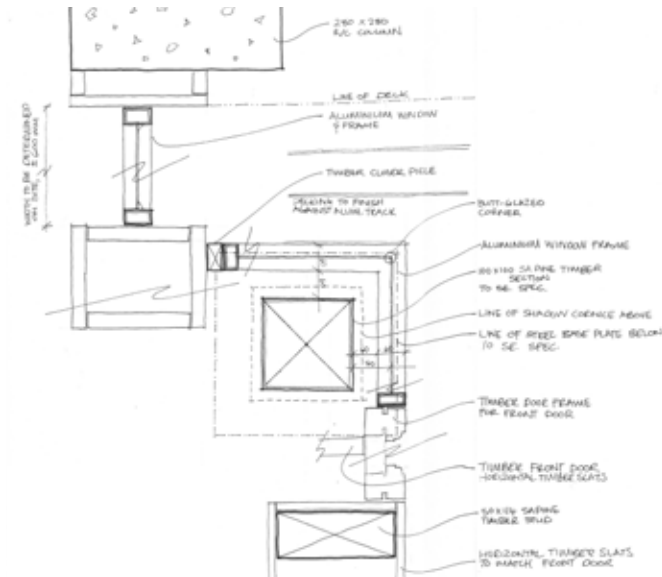
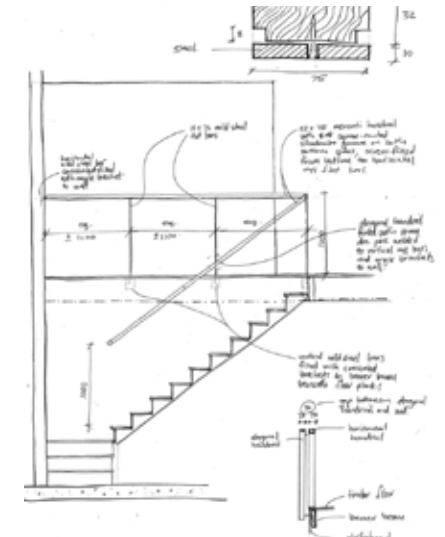
2014
House Hetherington
 Noordhoek, Cape Town, SA

Complete internal refurbishment and addition of family room and main suite to this house amongst Milkwood trees. A theme of opening corners ensured a good connection with the garden.

tender documentation, construction detailing, assisting site supervision

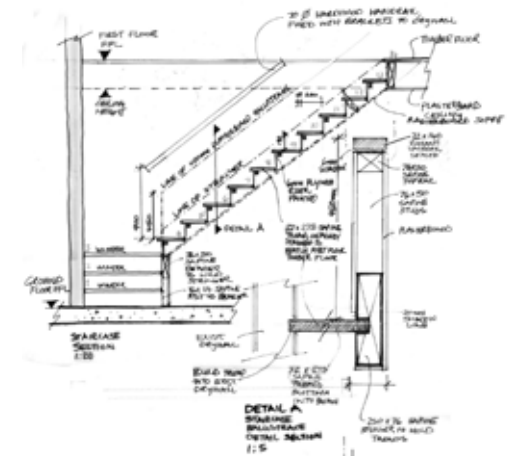


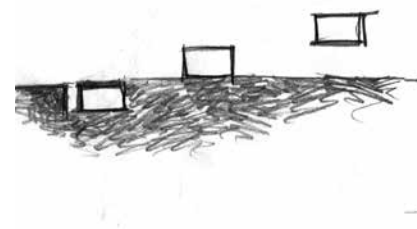
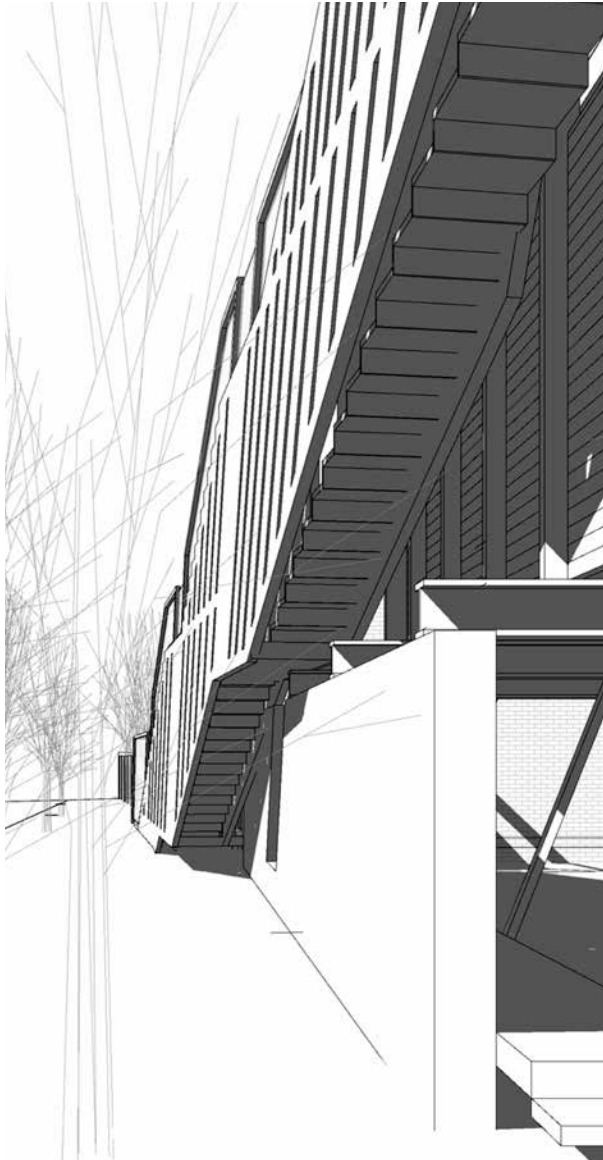
aluminium sliding door details



corner detail

staircase details



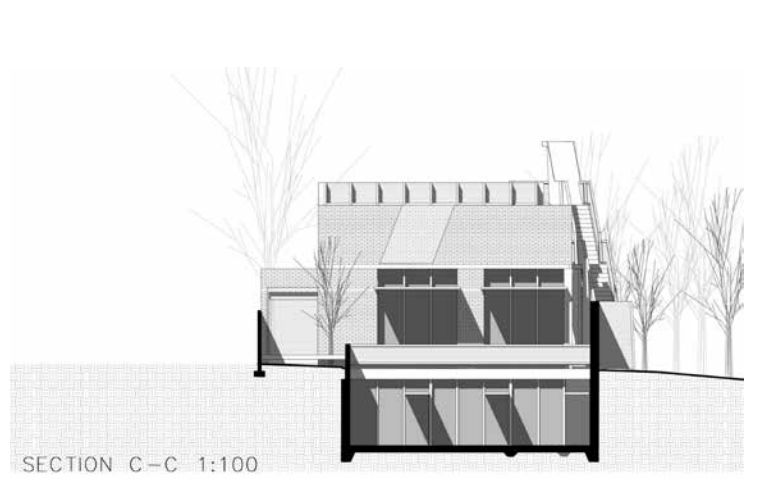
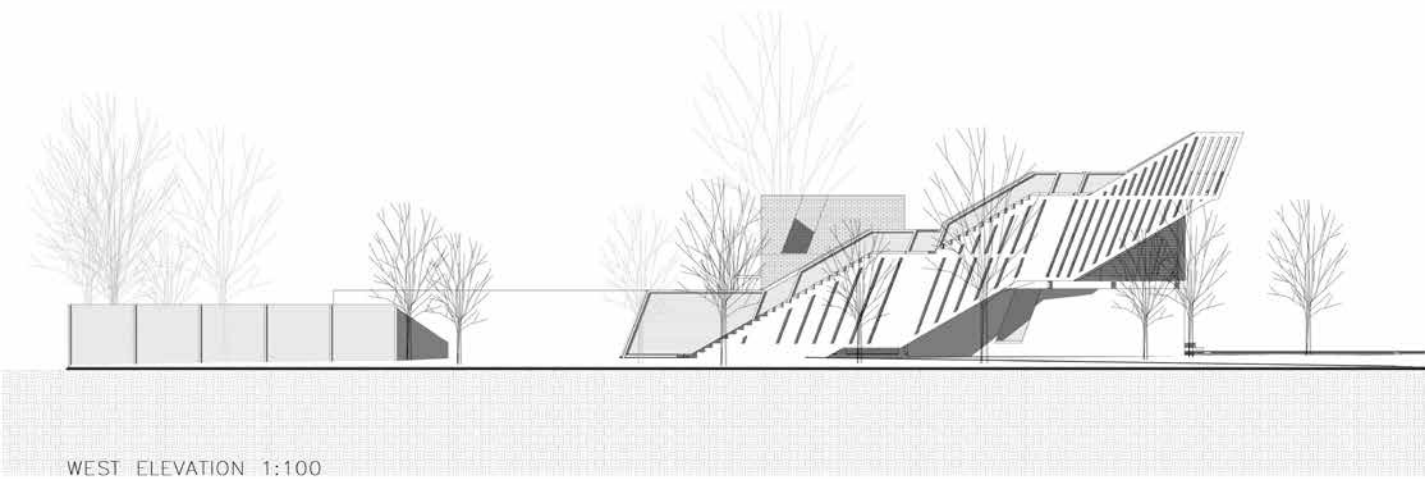
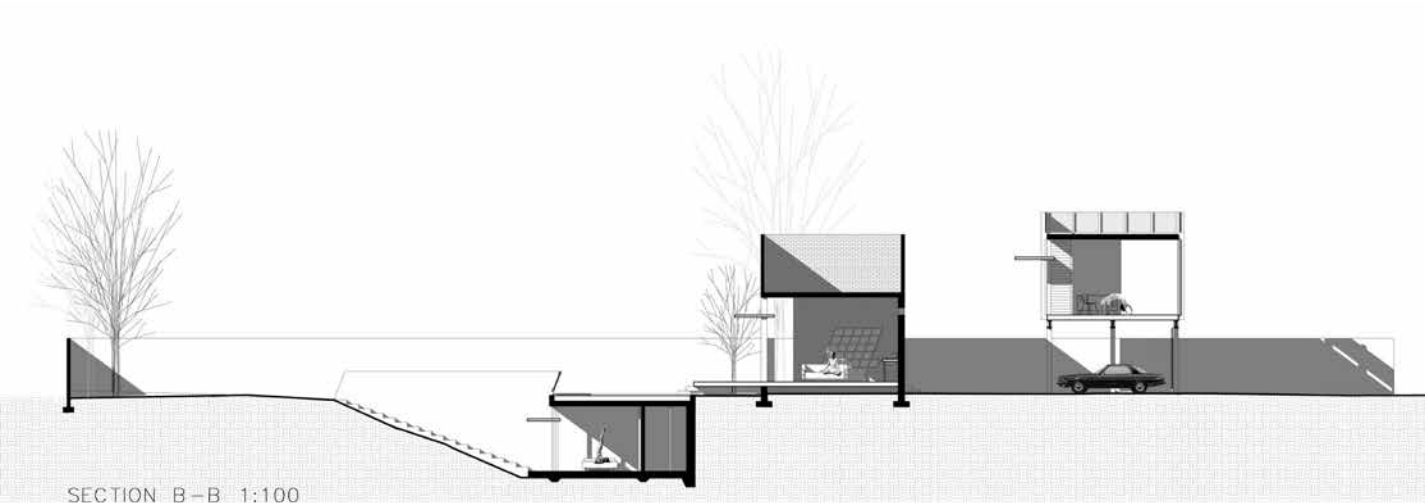


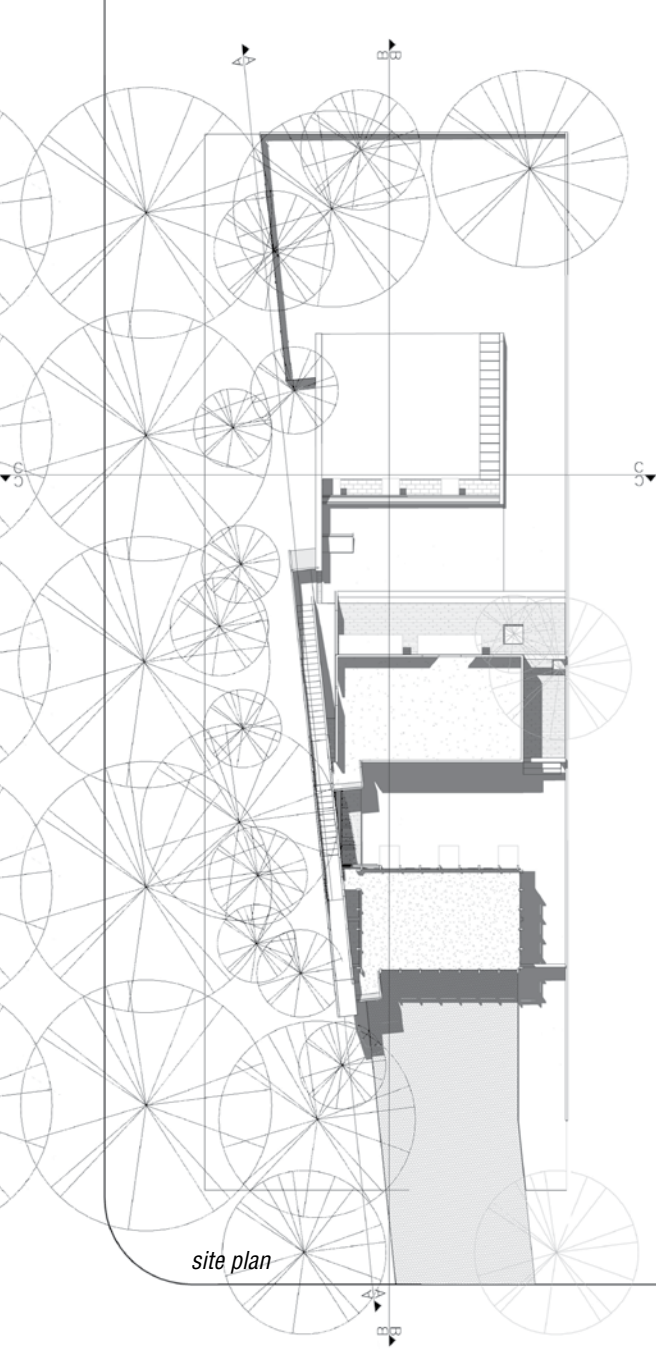
2009
House for a blind writer
 Muckleneuk, Pretoria, SA

Designing for a blind person prompted issues of marginality – living on the threshold. It is maybe in this liminal state that we can be true to ourselves, our being. La Shure said that in this threshold, “...human beings are stripped of anything that might differentiate them from their fellow human beings – they are in between the social structure, temporarily fallen through the cracks... and it is in these cracks, in the interstices of social structure, that they are most aware of themselves.” This dwelling provides its dweller with opportunities to experience a range of liminal phenomena, of which the stair channel is the most impressive. It consists of two

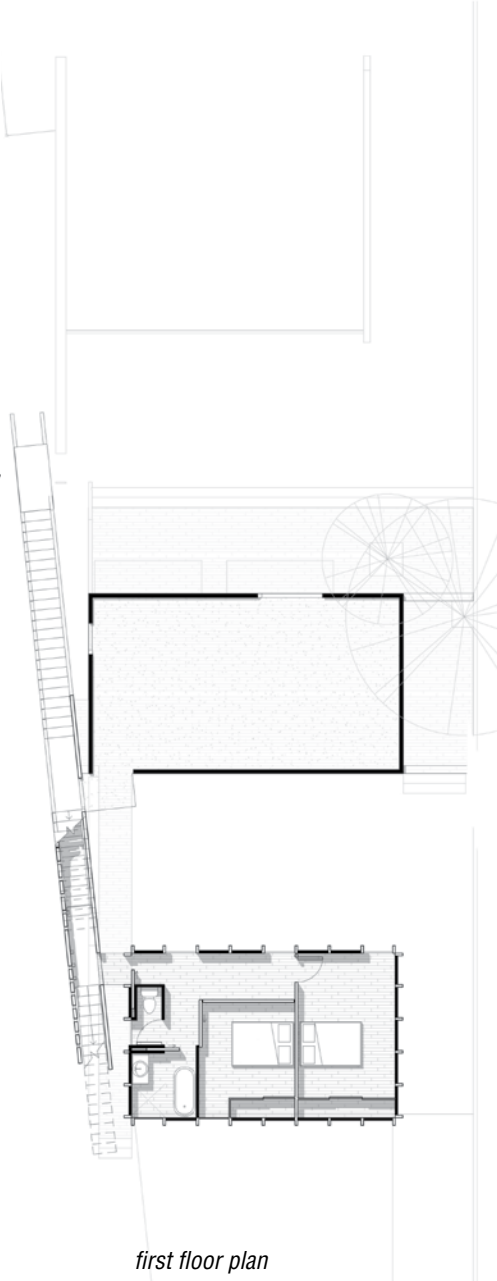
levels of stairs, the top one forming a U-shaped concrete channel and connecting the two roof gardens. The bottom stairs are of steel to amplify the noise of ascending and descending in the house. The concrete is cut with slits, admitting late afternoon sun and air to confuse inside with outside, enclosure with exposure. The perforations intensify to the top, where the channel opens to a landing suspended between the earth and the sky – stairs leading to nowhere. It becomes a dynamic diagonal sculpture of massive concrete to control traffic noise.

BSc Arch. - 2nd year studio

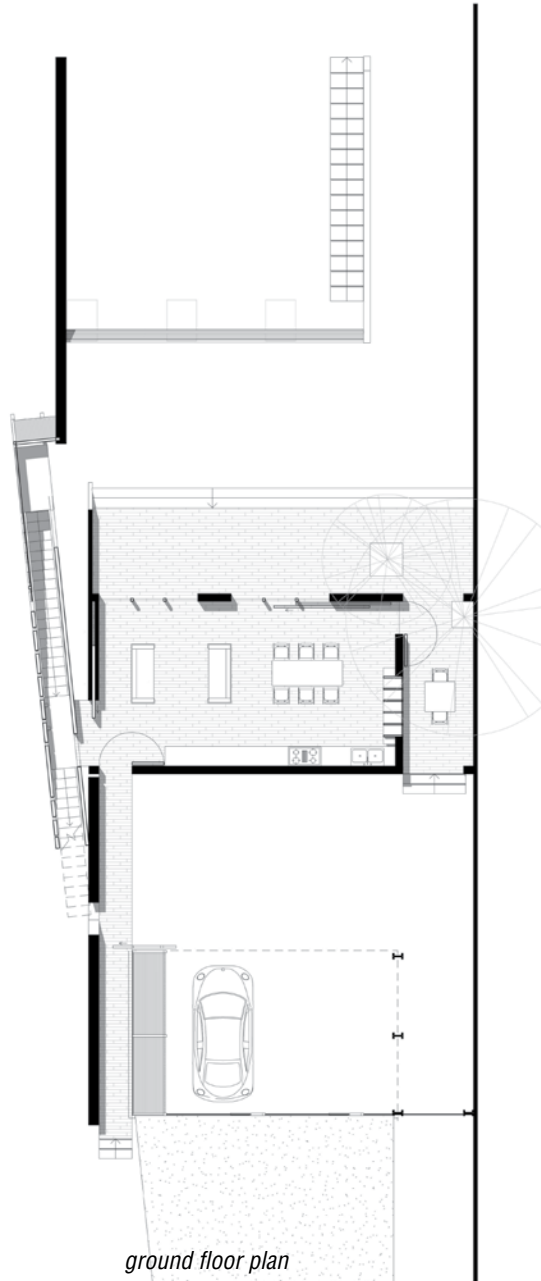




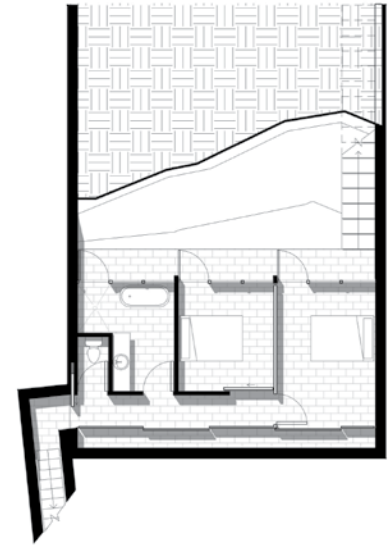
site plan



first floor plan



ground floor plan



basement plan

