

ARCHITECTURAL DESIGNER
2020 PORTFOLIO

HOLLY ANN HORTON

TABLE OF CONTENTS



ANIMAL SHELTER

June 2020
Santee, CA



COMMUNITY CENTER

December 2020
San Diego, CA



GARDEN PLAZA

March 2019
Seattle, WA



DIAGRAMS & STRUCTURES

March 2018



FIRE STATION & DISPATCH

June 2017
Los Angeles, CA



ART

Various projects



OUTSIDE-IN HOME

June 2019
San Diego, CA

ANIMAL SHELTER

- Santee, CA
- Thesis

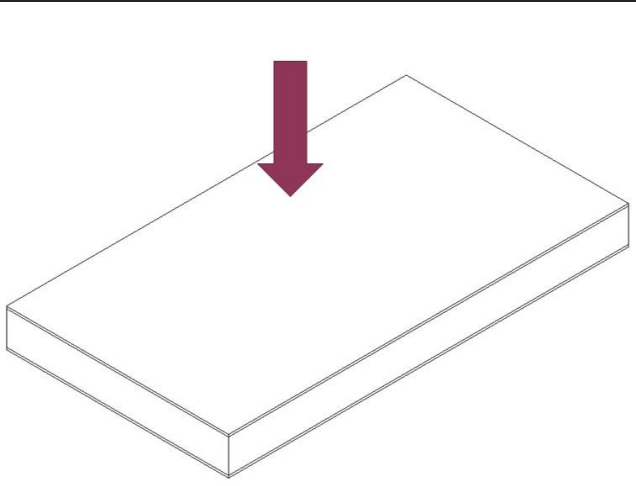


PROJECT INTRODUCTION

In response to **overflowing animal shelters** caused by the number of dogs and cats entering these shelters being double the number of pets being adopted, a prototypical design thesis was created to provide improved **integration, exposure, and subsequent adoption** statistics of dogs and cats in the United States.

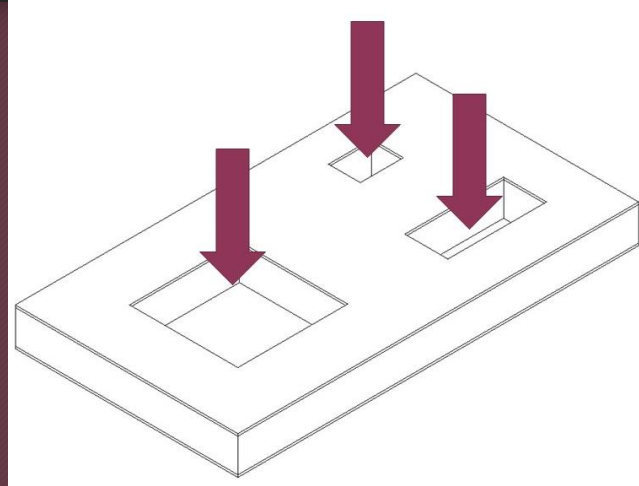
My solution to this problem will be to provide ample **outdoor spaces** inside the building, so people can play with the dogs and cats and find the animals that best fit their lifestyles and personalities. Providing **animal residencies** that have more room than typical kennels or runs will give dogs and cats more than enough space to show off their happiness and comfort. Finally, Utilizing **glass and courtyards** to create a transparency will allow people and animals to feel connected and more visible.

SPACE CONCEPTS



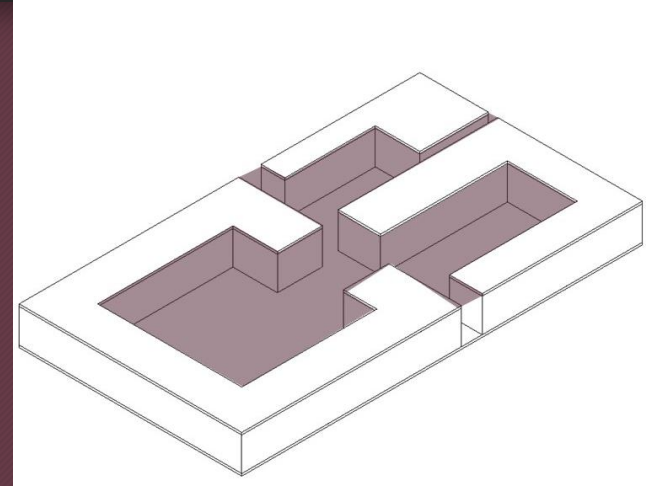
HORIZONTALITY

Enhance the focus on the animals



VOIDS

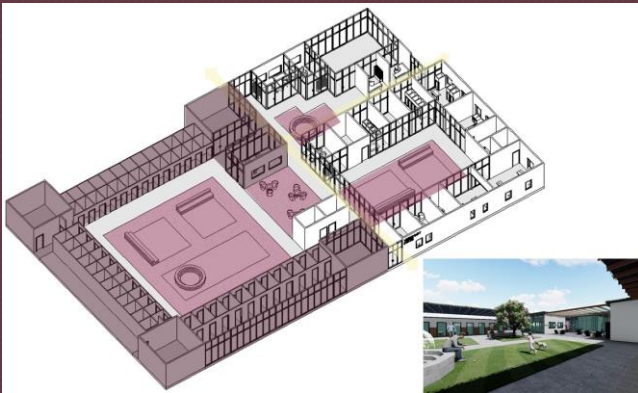
Provide places for nature and atmosphere, as well as community



CIRCULATION

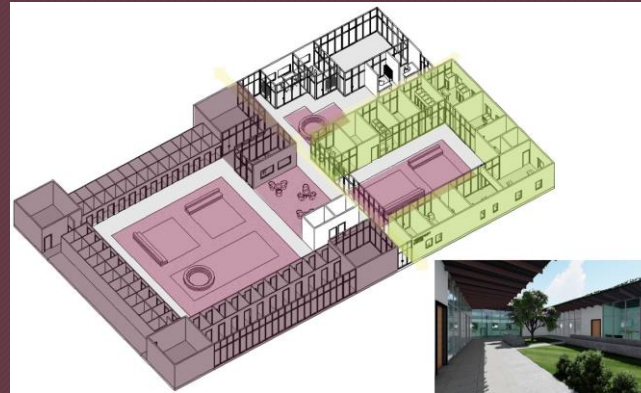
Create places of integration throughout the building

PROGRAM



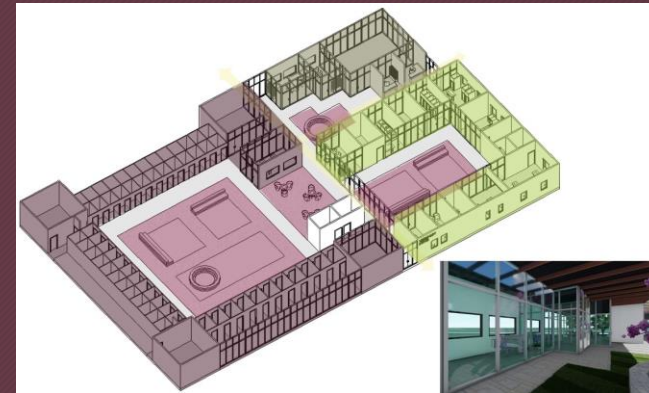
SHELTER

Contains rooms, not kennels or runs, for 25-50 dogs, and 50-70 cats. There is enough space for isolation if necessary, and it is separated from the courtyard by circulation, which enhances visibility and walkability.



VET CENTER

A glass interior façade for most of the rooms. These facilities are for spay/neuter and microchipping, intake services, and minor emergency treatments. The vet center is also separated from the courtyard by circulation, to improve mobility and atmosphere.



INTRODUCTION

Where the interior pet display playroom, the front desk clerks, and the staff offices live. There is a courtyard in the entrance hallway to greet future adopters, and improve atmosphere.



ABSTRACT

A system of stories, where the pets are the main characters.

The Recovery/Holding Quarters, where all pets that come through intake stay before joining the other animals.
Mock Living Rooms, where dogs and cats may be presented in a household environment, so a person can see a pet exactly how they would be interacting in their own home.



ABSTRACT

A system of stories, where the pets are the main characters.

The Lounge, where people can sit and enjoy a refreshment, while watching the dogs and cats play in the courtyard, before they decide which pet they want to play with.
Main Courtyard, where animals can play together and with future adopters. Future adopters will see this space as an invitation to meet the pet of their dreams.

SHERMAN HEIGHTS COMMUNITY CENTER

- Sherman Heights, San Diego, CA
- December 2019



PROJECT INTRODUCTION

ZOOM-OUT

The project is to analyze Sherman Heights and understand the density, mobility, heights, and land uses of the neighborhood. The question was presented to the studio to revitalize the neighborhood and implement more efficient safety precautions.

ZOOM-IN

Each student then chose one lot in the neighborhood to design a small scale program that improved and revitalized the community. The students also used the philosophy from a major brand to sponsor the core values of the design ideas, as well as the construction and maintenance of the project.

ZOOM OUT

NEIGHBORHOOD ANALYSIS

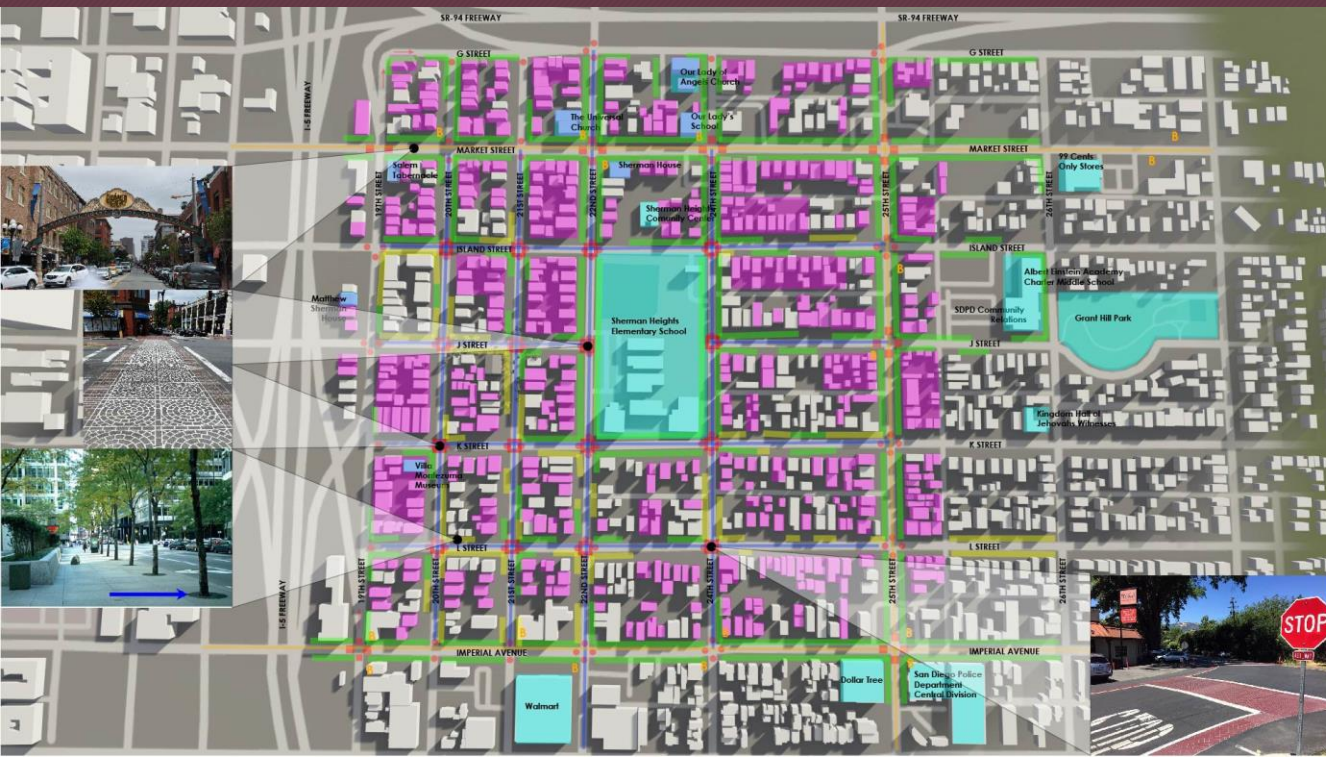
STRENGTHS	WEAKNESSES
Victorian Architecture	Pedestrian safety
Proximity to Downtown & Freeways	School Zone
Families: 3-person household	Lack of Walkability
Strong Catholic culture	Neighborhood income: \$44,801
	Immigrant population: 21.53%
OPPORTUNITIES	THREATS
Historic Neighborhood	Funding implementations
Landscaping framework	Uneducated community
Tourist attraction	Necessity of modifications to neighborhood
Similar to Old Town	
Citizenship	
Safer Community	

RESPONSE

I found the most important things to focus on to be the historic homes and pedestrian scale. I will use the landscaping as a “picture frame” to highlight the heavy density of historic homes. The existing 30’-0” height limit of the neighborhood is acceptable because of the views to downtown and the bay, and if this was increased, the neighborhood would lose all sense of human scale. Regarding mobility, the streets need enhanced crosswalks in the form of material differentiation. This makes the crosswalks safer for the families in the neighborhood. Finally, there is not enough recreation available, so a community center must be provided near the center of the neighborhood. Iconic signs will also be included on the main streets to distinguish the neighborhood from downtown, Grant Hill, and the other surrounding areas.

PROPOSALS

PROPOSED IMPROVEMENTS

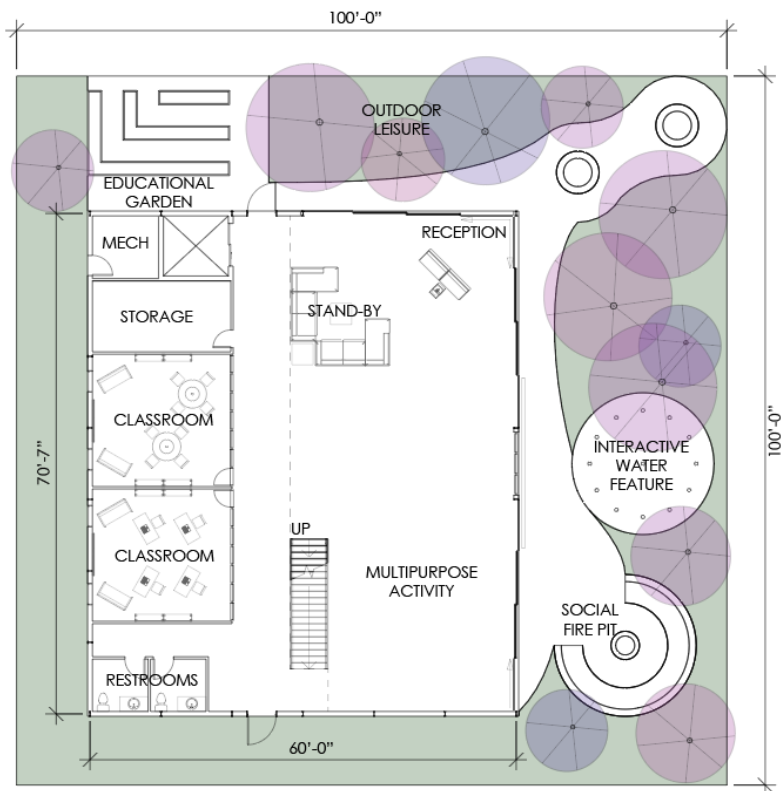


SITE CHOICE

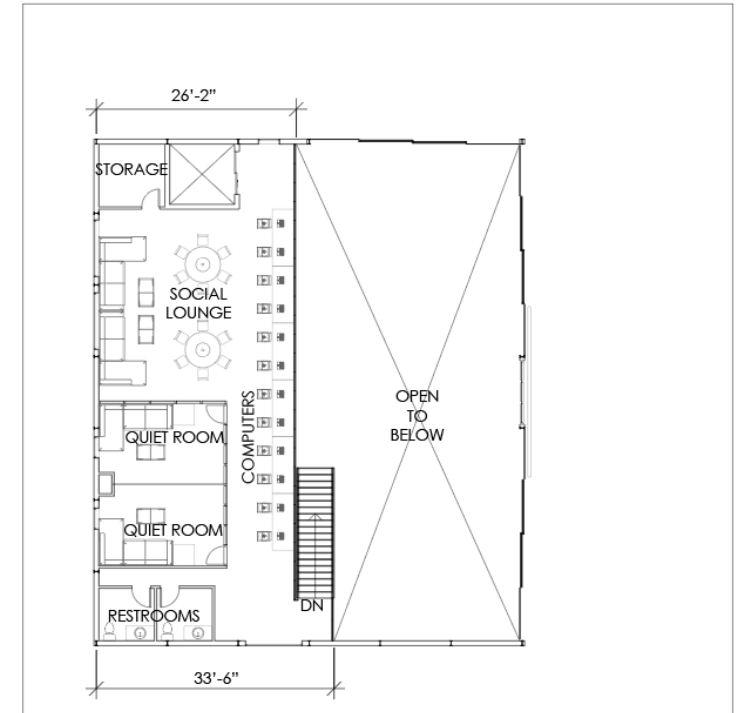


I chose the corner of J St + 21st St. The corner lot has increased visibility, favorable accessibility, and multiple entrance points. My lot is close in proximity to Sherman Heights Elementary, the Villa Montezuma Museum, and downtown San Diego.

ZOOM IN – Community Center

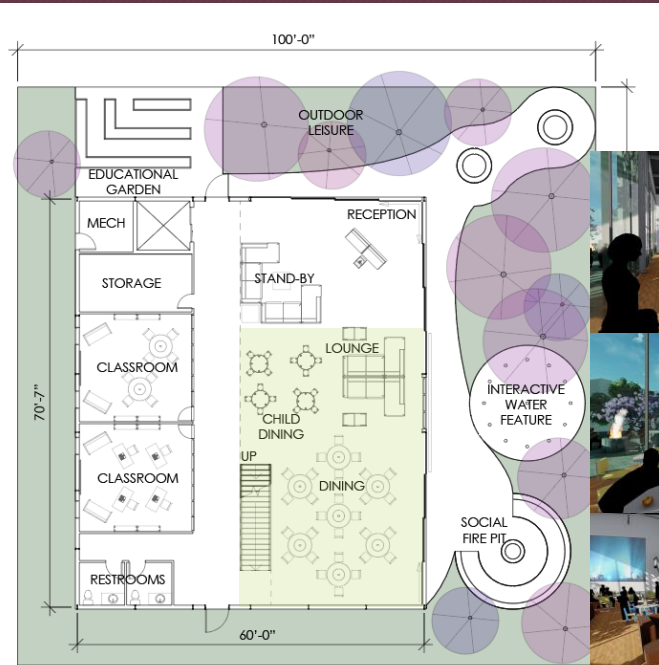
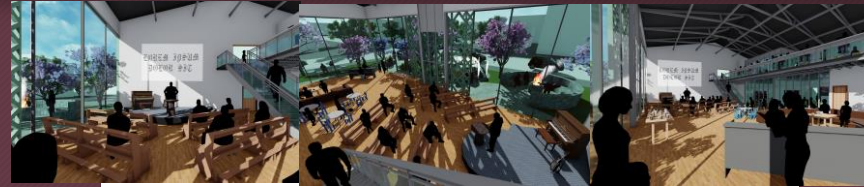


GROUND FLOOR

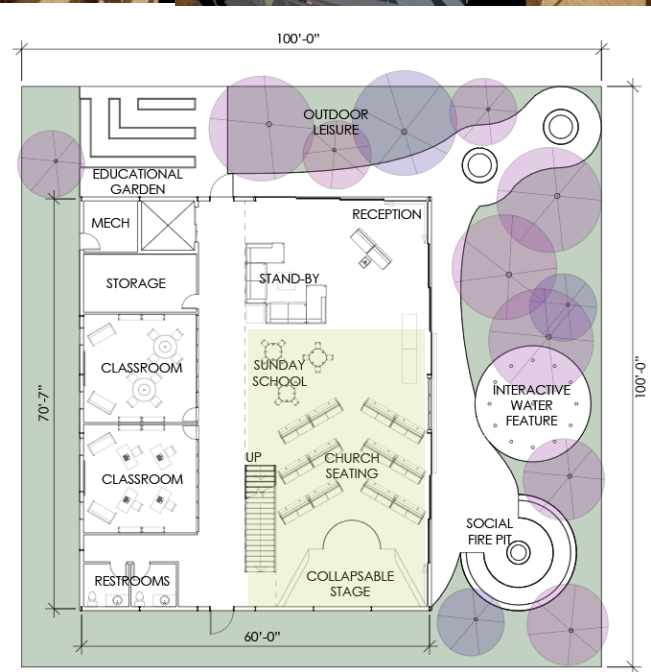


MEZANNINE

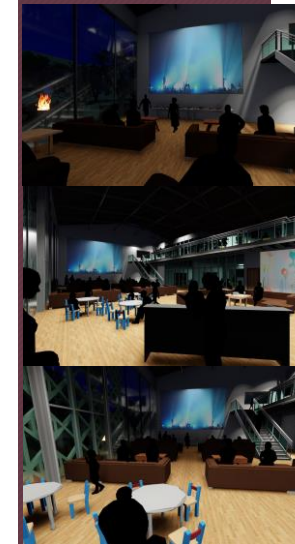
MULTIPURPOSE SPACE OPTIONS



"Dining Hall"



"Church Service"

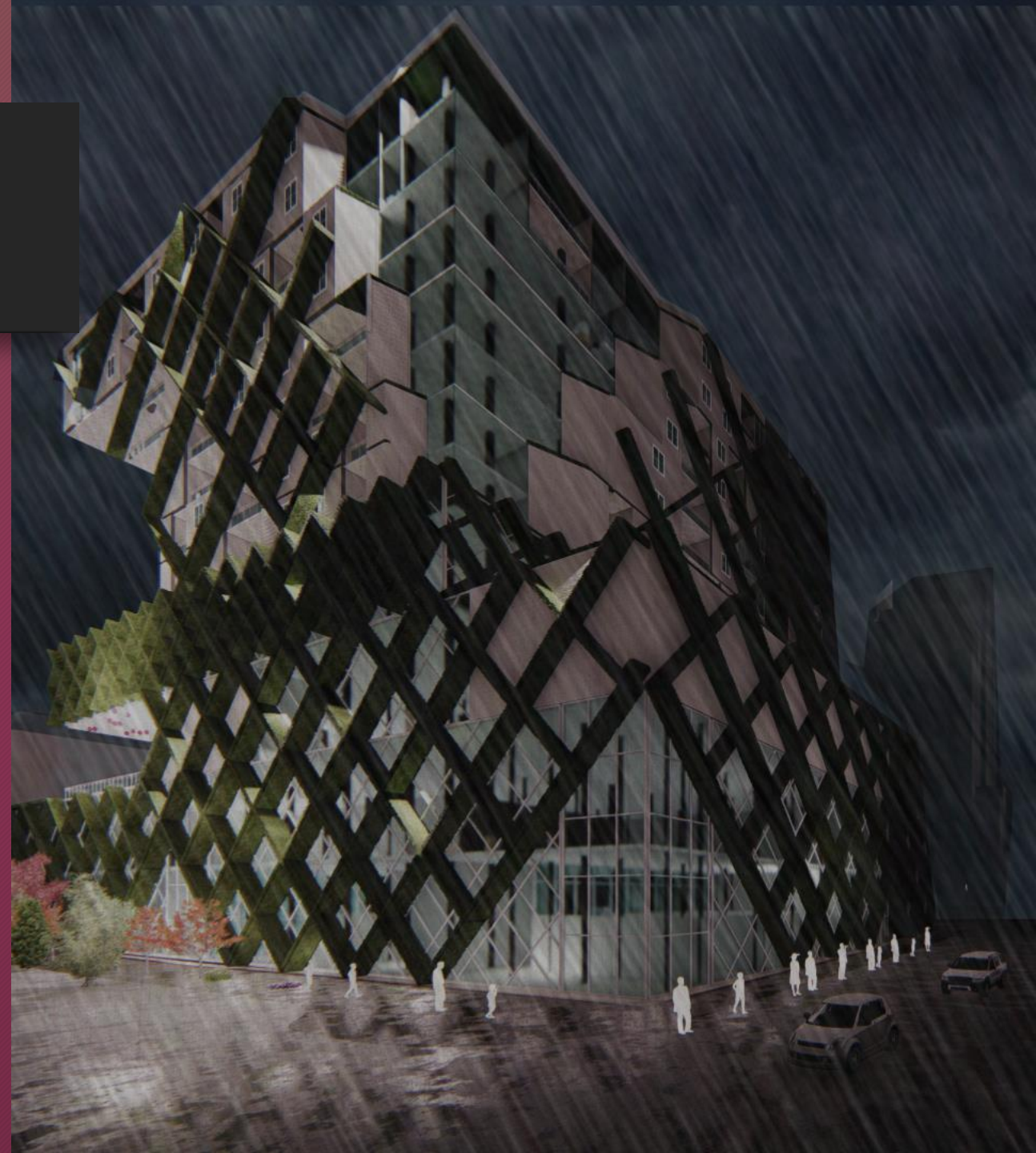


"Viewing Party"

GARDEN PLAZA

In collaboration with Abeeha Awan

- Seattle, WA
- March 2019

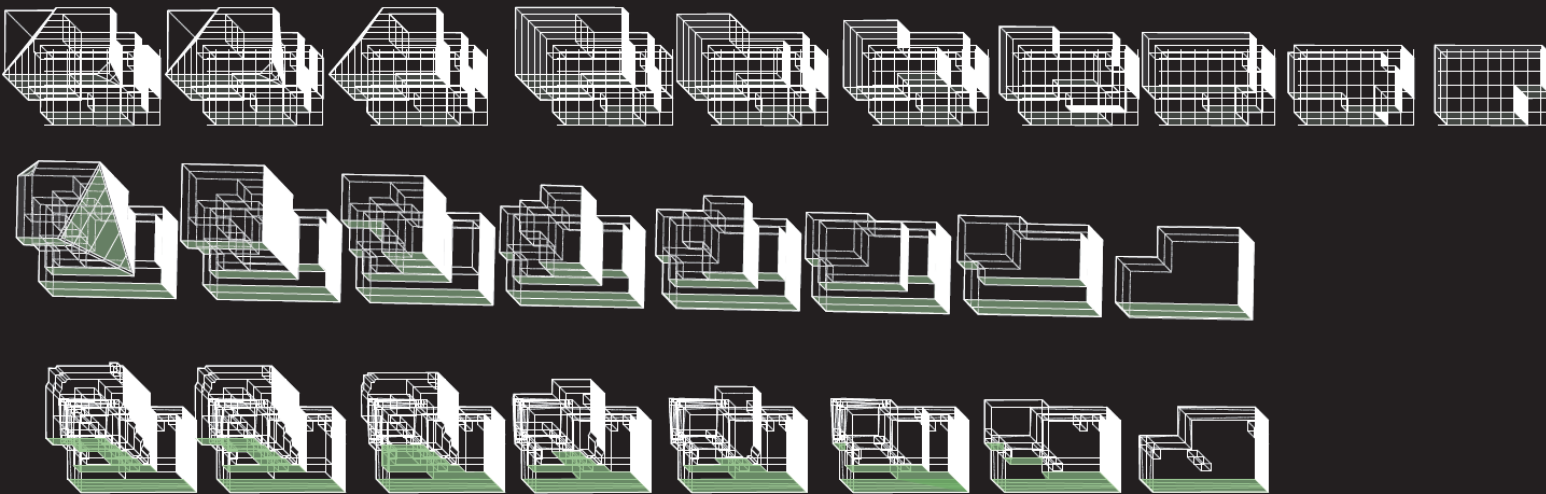


PROJECT INTRODUCTION

The Project is based in a bustling part of downtown Seattle. The aim of the project is to get to know your Neighbors. Due to busy lives, people rarely converse with their neighbors. We hope to rectify this phenomenon. A general consensus has proven that more Americans die from **LONELINESS** than anything else. In addition, we hope to add a multitude of green spaces to connect people to **GREEN SPACE**.

FORM GENERATION

PHYSICAL & COMPUTER MODEL BY HOLLY HORTON, GRAPHICS & RENDERS BY ABEEHA AWAN



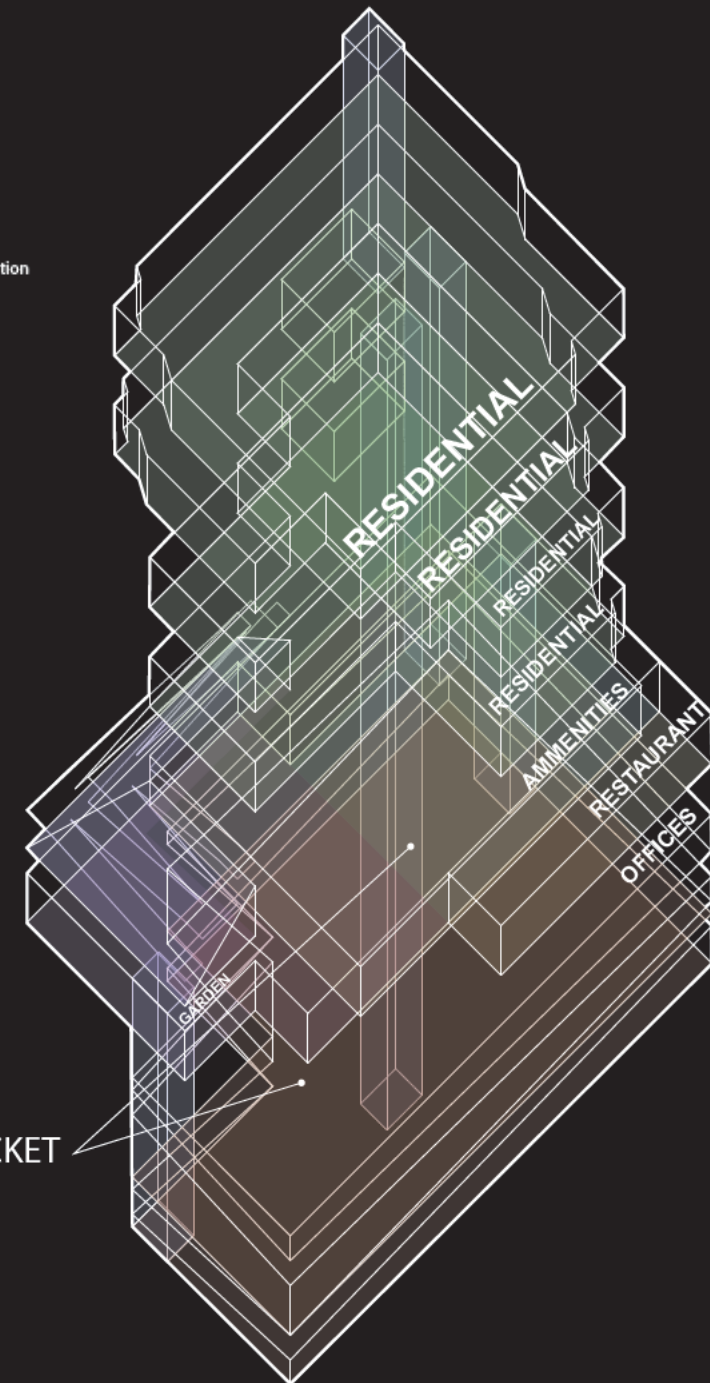
- Residential
- Ammenities
- Garden
- Vertical circulation
- Retail/Offices
- Restaurant

01

02

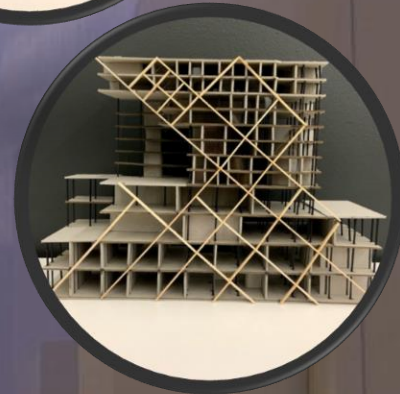
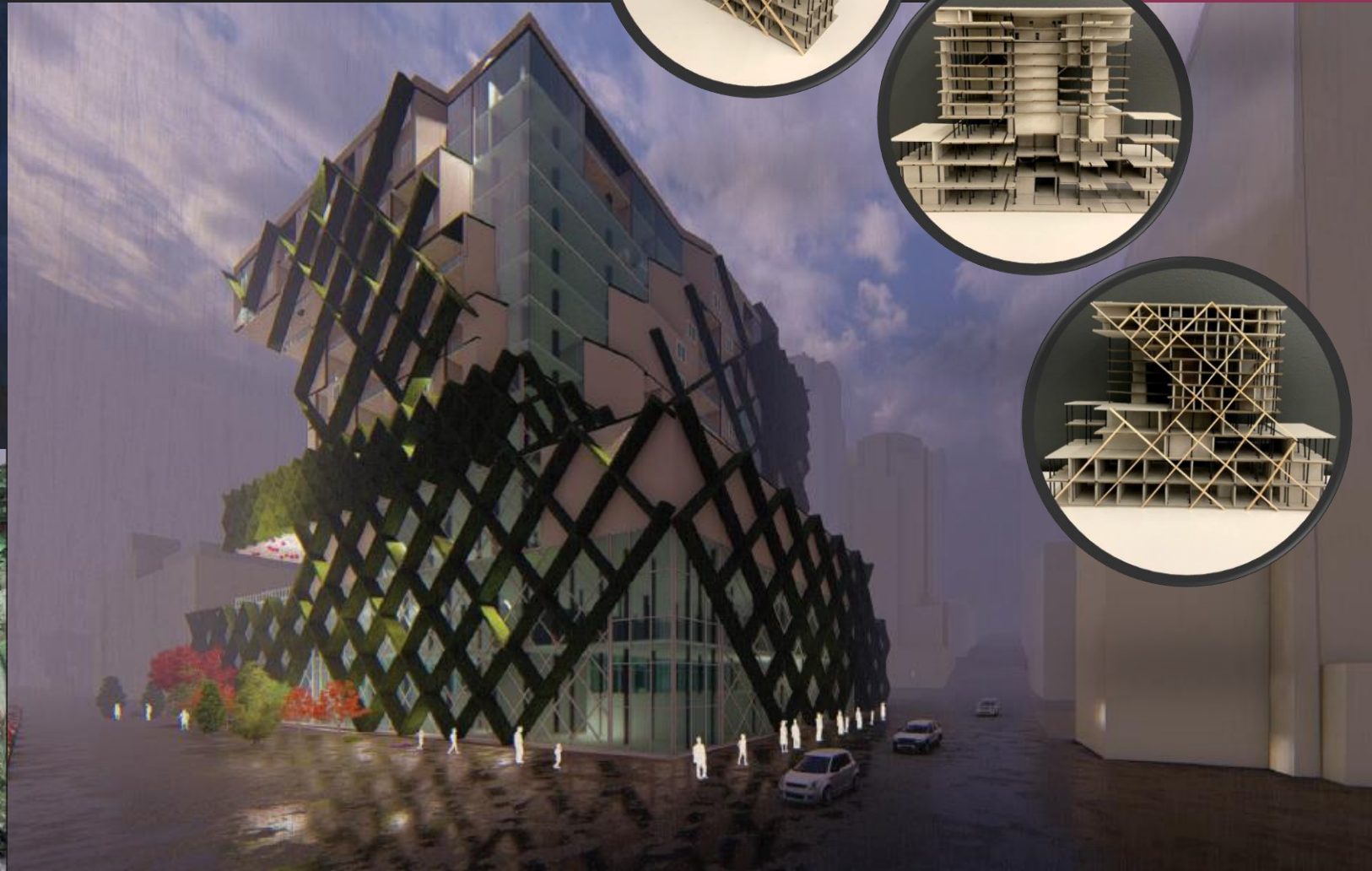
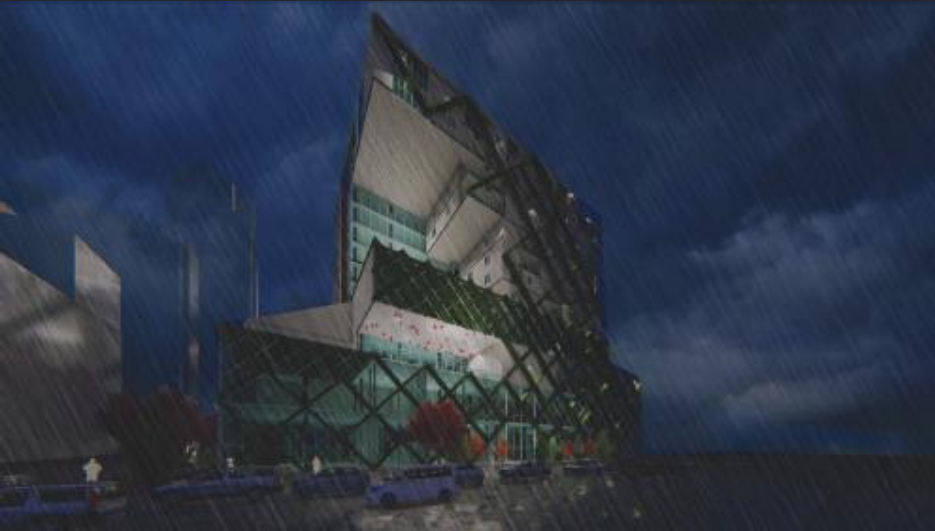
03

VENTILATION POCKET



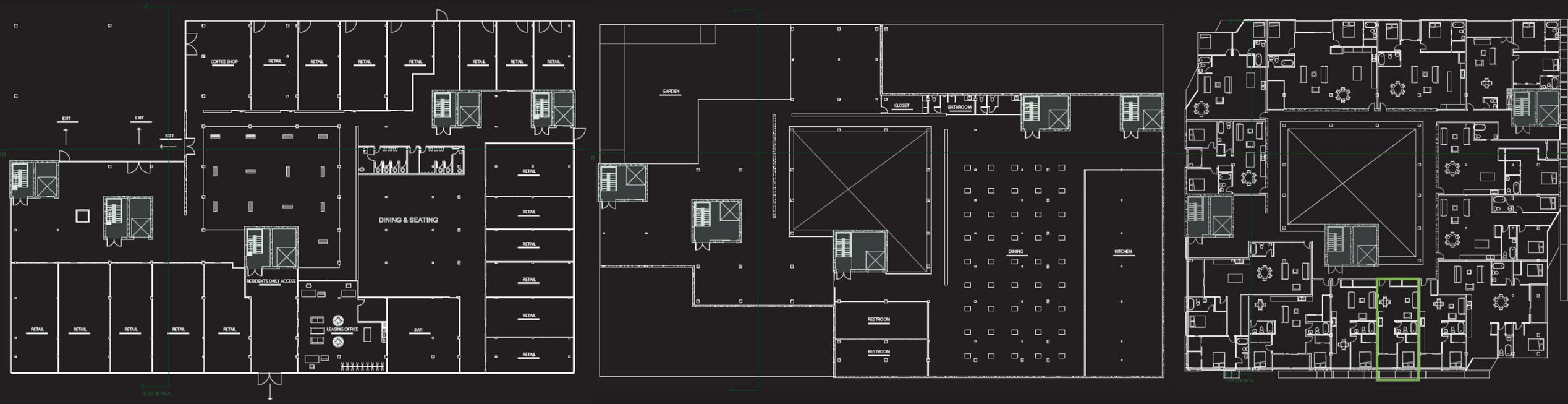
RENDERS & MODELS

PHYSICAL & COMPUTER MODEL BY HOLLY HORTON, GRAPHICS & RENDERS BY ABEEHA AWAN



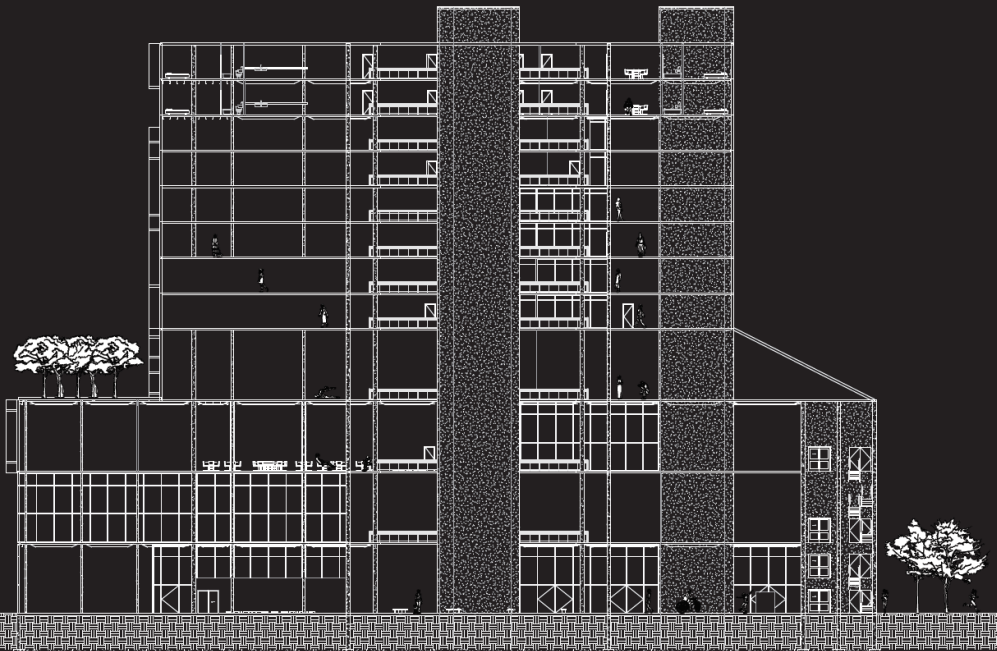
PLANS

PHYSICAL & COMPUTER MODEL BY HOLLY HORTON, GRAPHICS & RENDERS BY ABEHA AWAN

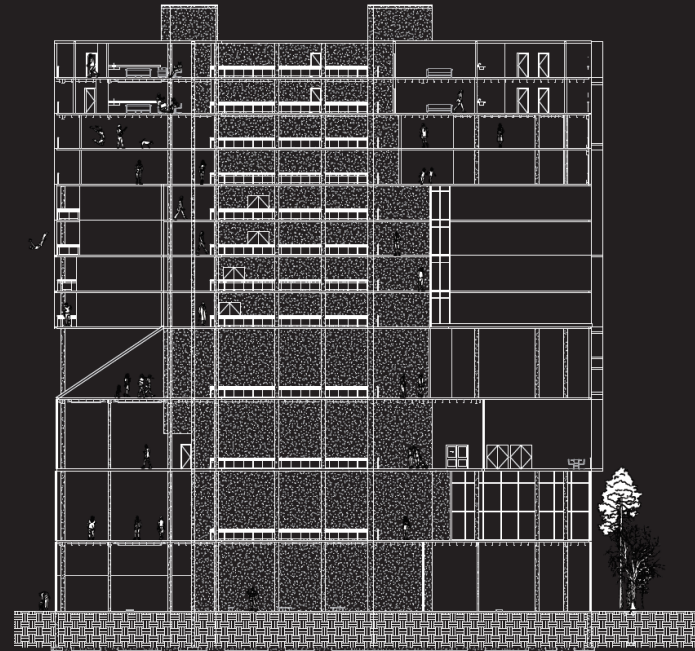


SECTIONS

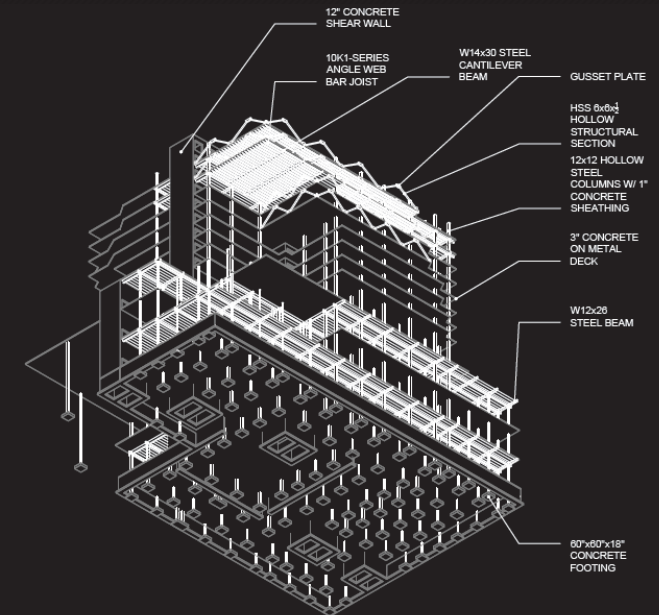
PHYSICAL & COMPUTER MODEL BY HOLLY HORTON, GRAPHICS & RENDERS BY ABEEHA AWAN



SECTION A



SECTION B

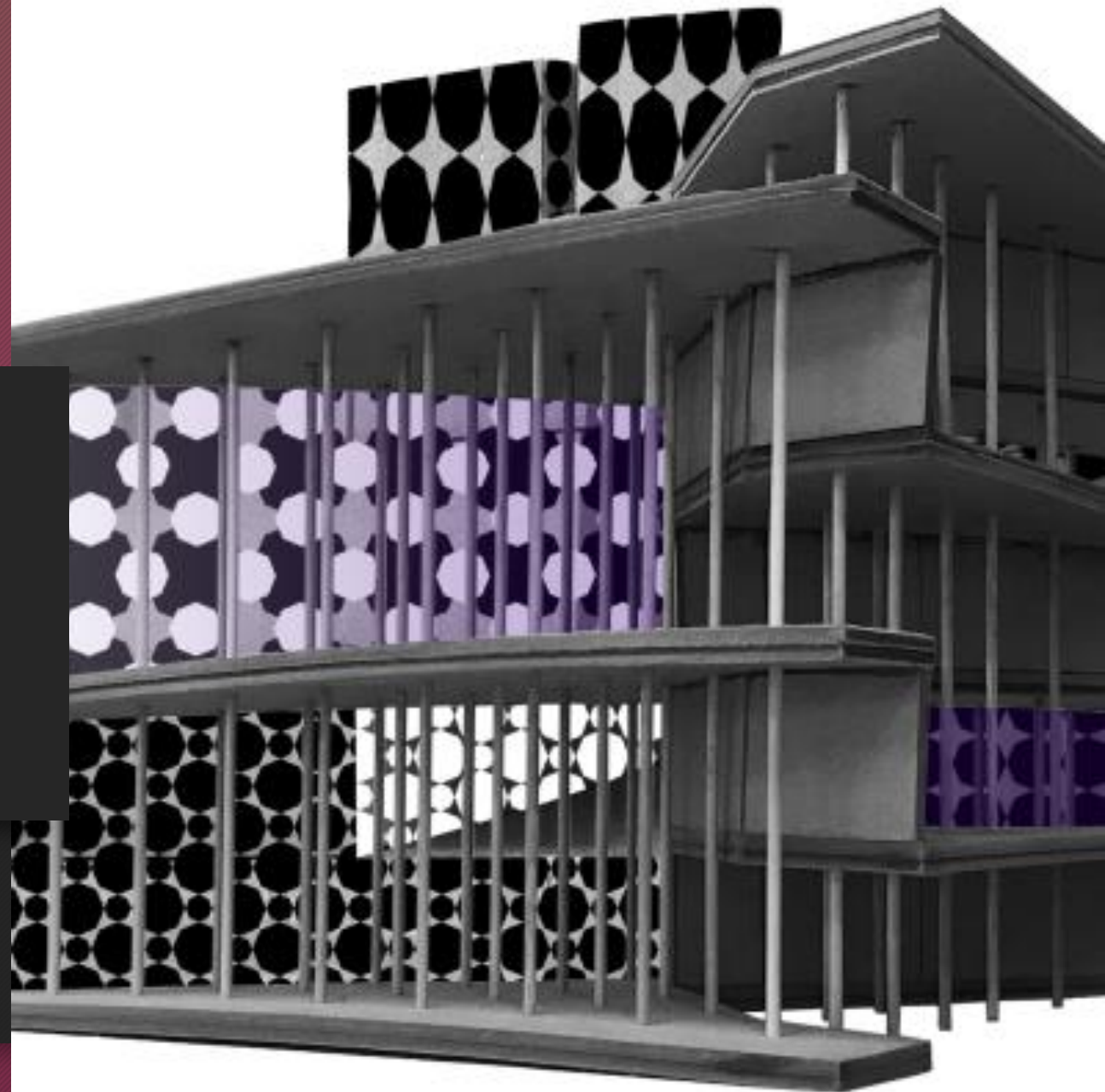


STRUCTURAL DIAGRAM
SCALE: $\frac{1}{8}'' = 1'-0''$

STRUCTURAL AXONOMETRIC

DIAGRAMS & STRUCTURES

March 2018



PROJECT INTRODUCTION

This multi-faceted project tested the studio's skills in drafting and diagramming.

First, the studio was given "scenarios" in which we had to make drafts of all the furniture that would be required in these scenarios. This does help us understand the scale required for these rooms.

Next, we were given an obscure shape and told to divide it 5 different times, with each time being a different parameter:

1. 3 Divisions, max 2 touches per piece, 1 void
2. 7 Divisions, max 3 touches per piece, 4 voids
3. 10 Divisions, max 3 touches per piece, 7 voids
4. 17 Divisions, max 3 touches per piece, 11 voids
5. 27 Divisions, max 3 touches per piece, 23 voids

We then had to take this system of solids and voids and plug in the previous scenarios in the form of abstract render collages.

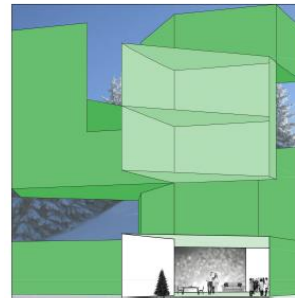
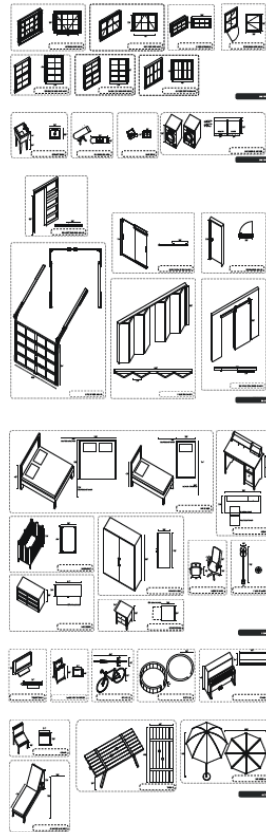
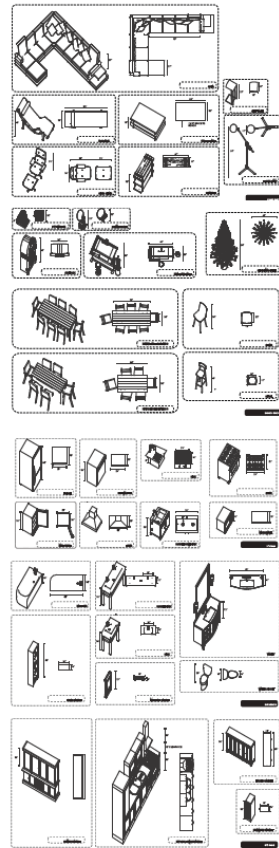
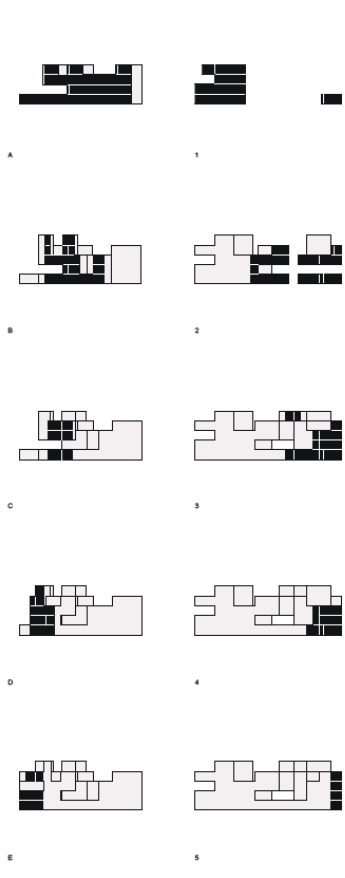
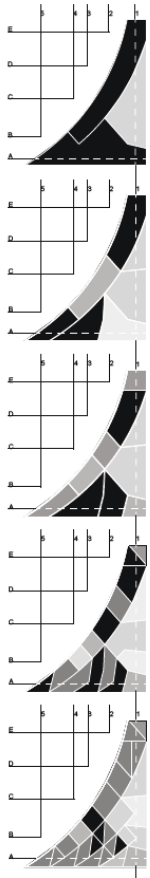
These collages defined which "figures" would be created in regards to our structural system: columns, plates, and figures.

Finally, a physical model is created of this structure.

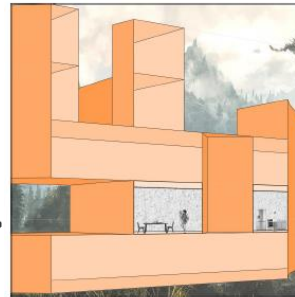
DIAGRAMS

PLANS

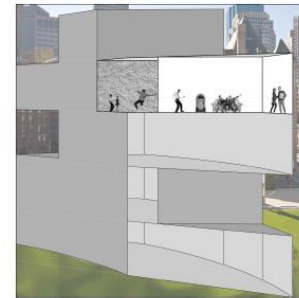
SECTIONS



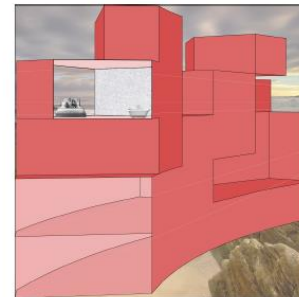
Scenario 1: "The Last Supper"
A massive midday dinner is about to take place. There are 10-20 people expected to gather. The dinner will be a four-course meal and will take hours to get through. It is likely, guests will take breaks from the table to socialize and watch the big game. The dining area is directly adjacent to a living area. The guest list is diverse in age from seniors to infants. Create a space plan for this event detailing dining accommodations with an adjacent living space for relaxing & watching.



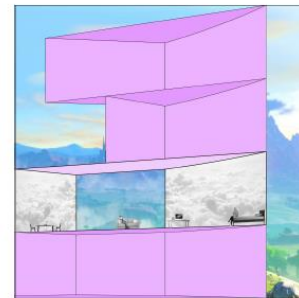
Scenario 4: "Chef's Kitchen"
A self-proclaimed culinary wizard needs assistance with her new kitchen layout. Her loft has a space approx. 10' x 14' in which a new kitchen could fit. She isn't concerned with budget as this is her passion and will spend whatever it takes to get the dream kitchen she wants. She is married with two small children. Design a kitchen layout suitable for this chef and her family. A small informal dining area will be adjacent to the kitchen and will need to accommodate 4-6 people. The dining area can be outside of the 10' x 14' kitchen zone.



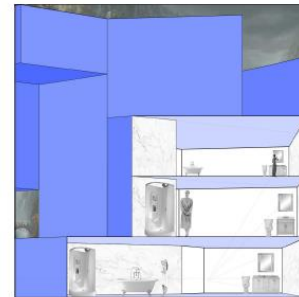
Scenario 2: "Party like it's 1999"
Several close childhood friends show up for the weekend after a few hours of getting caught up a few miles from the inner circle arrive. The height and music conversation, a spontaneous dance party seems to unfold. Luckily the space has a private courtyard, as the party begins to spill outside. A pool table, BBQ, DJ equipment, seem to be entertaining this rowdy crowd. Create an entertainment space(s) connecting an interior living space with an exterior courtyard.



Scenario 5: "The Respite"
You're looking for an Airbnb for a staycation in San Diego. You and your significant other want to experience another neighborhood, perhaps a beach, perhaps somewhere local. Ultimately, you want something exceptionally peaceful so you and yours can completely partner yourself with rest and relaxation. The bathroom will be the deciding factor in your decision. You want luxury, you want a bathroom seamlessly connected for a spa like experience. A fireplace a bonus, as you soak in a jetted tub. Design a bedroom space with connecting master suite to suit for people looking to recharge.

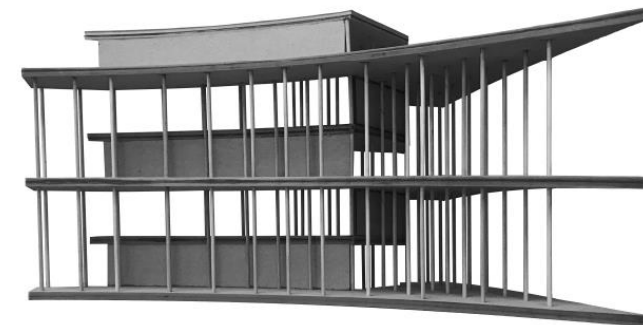
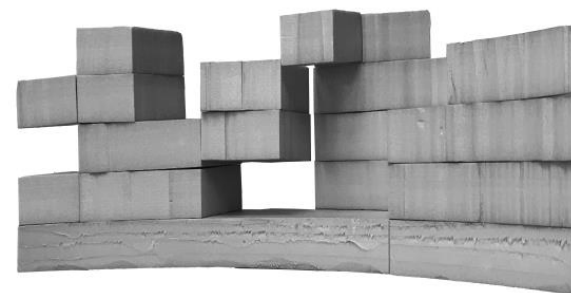
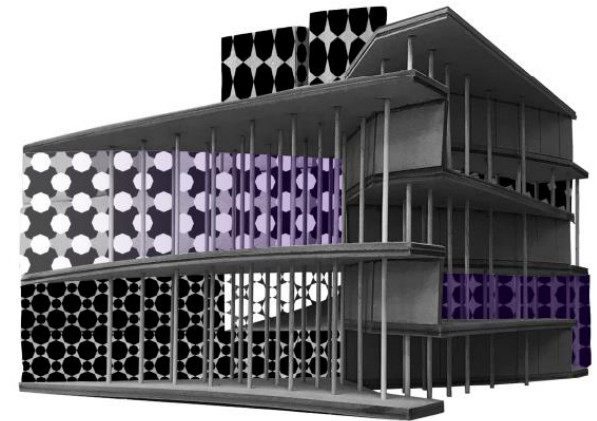
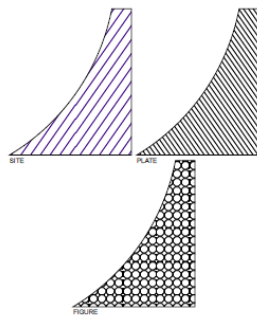
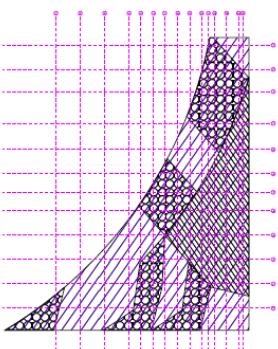
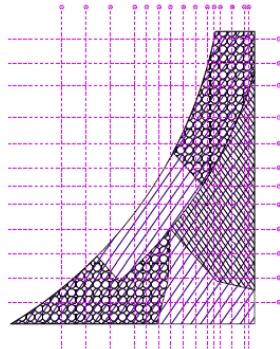
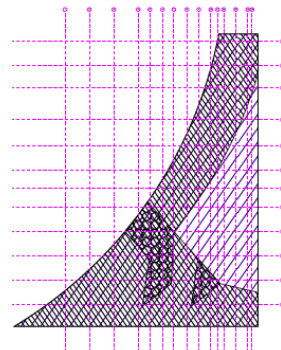
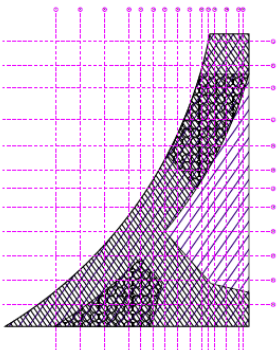
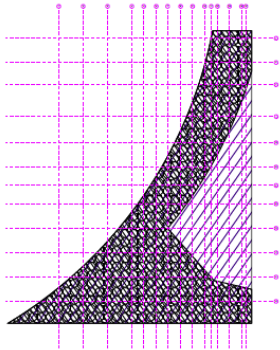


Scenario 3: "Micro Living"
First year living independent with a tight budget, likely a student. Everything this person needs must fit into an area no larger than 300 sf. This includes bed, seating, dining, studying, meal prep (kitchenette), free standing closet or armoire, etc. Create a space plan for this young and space limited user. Bathing facilities are part of a common area and will not need to be provided in this plan.



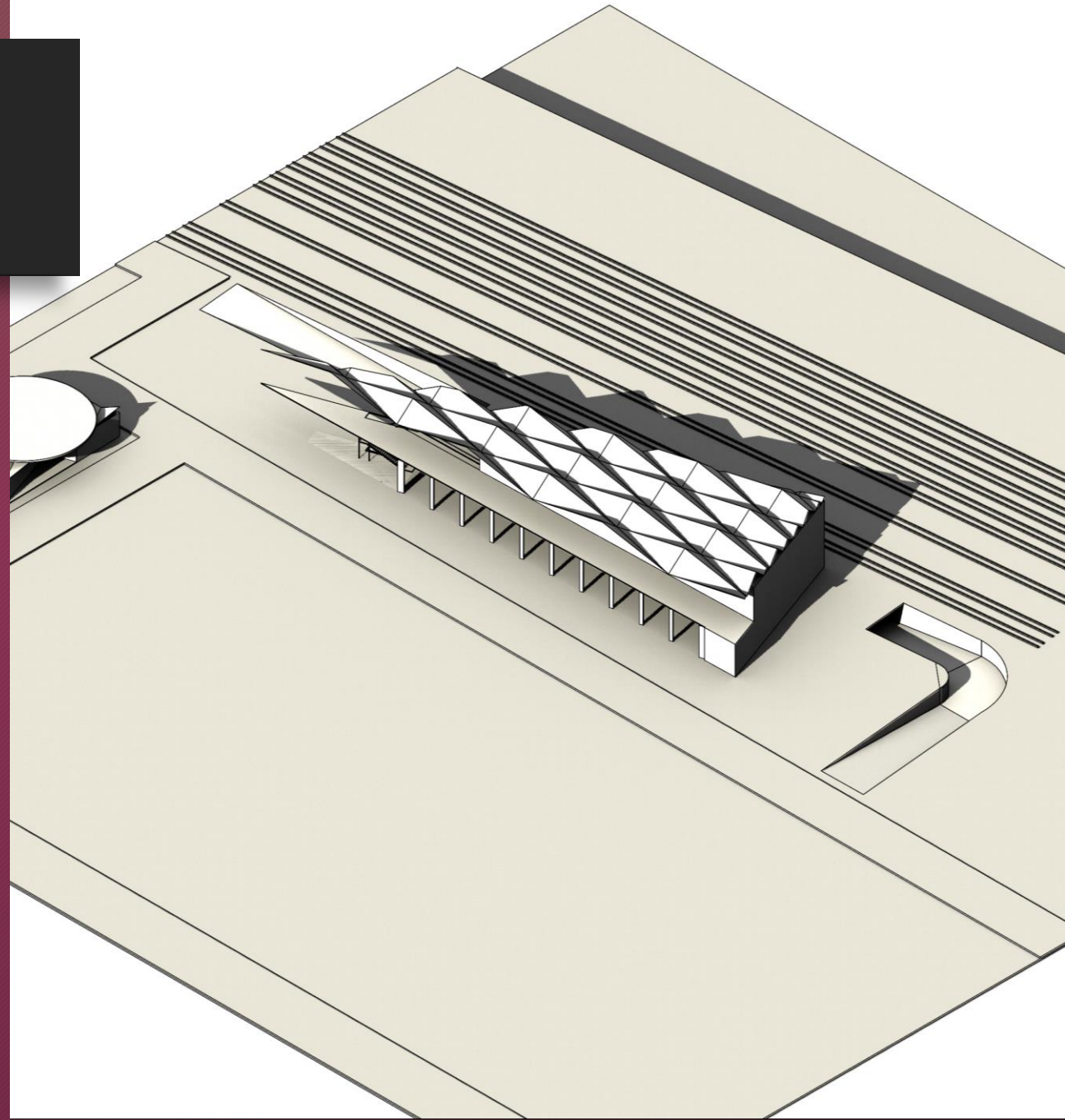
Scenario 6: "Hygiene - G.M.L."
You are an architect that just received the go ahead to start schematic design work on a multi-story project. There will be a balanced mix of apartment types, shapes & sizes. You don't have a lot of experience but you know you will need to consider many of its details. Your first focus is bathrooms. The client would like to see a typical configuration of the following bathroom types:
A. Small bathroom. Small compact shower, single basin vanity sink, water closet, towel rack, medicine cabinet.
B. Medium bathroom. Walk-in shower, double vanity sink, water closet, towel rack, medicine cabinet, linen closet.
C. Large bathroom. Separate tub & shower, double vanity sink, enclosed water closet, medicine cabinet, laundry closet/linen closet.
*Medium and Large bathrooms to be accessible

STRUCTURES



FIRE STATION & DISPATCH

- Los Angeles, CA
- June 2017

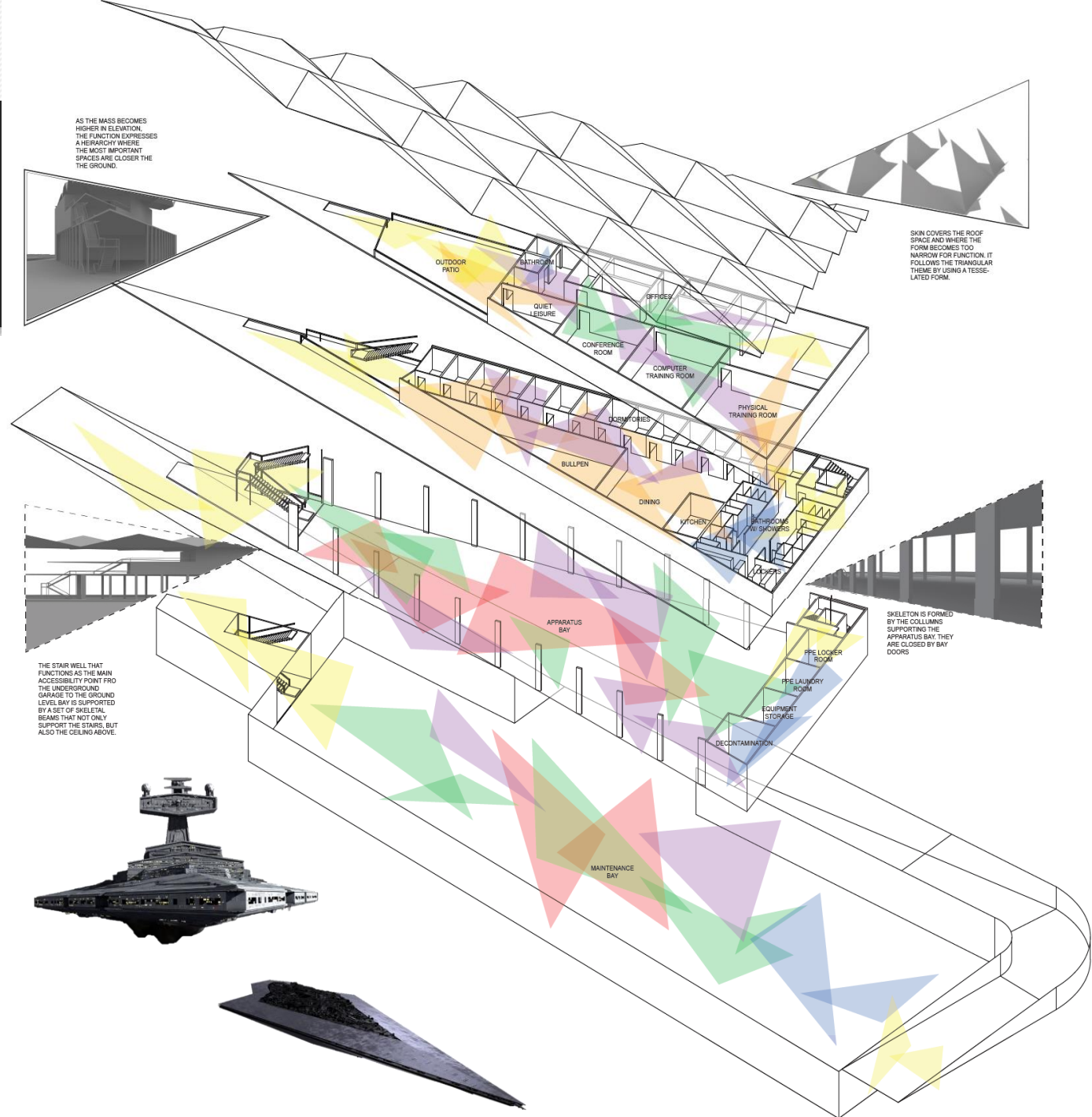
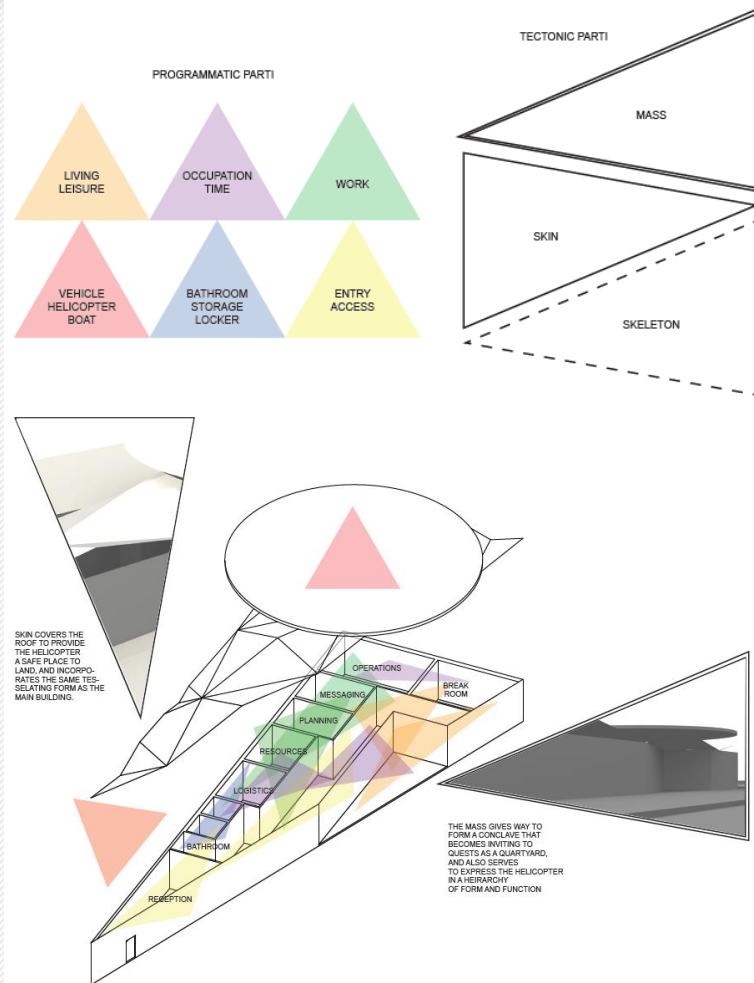


PROJECT INTRODUCTION

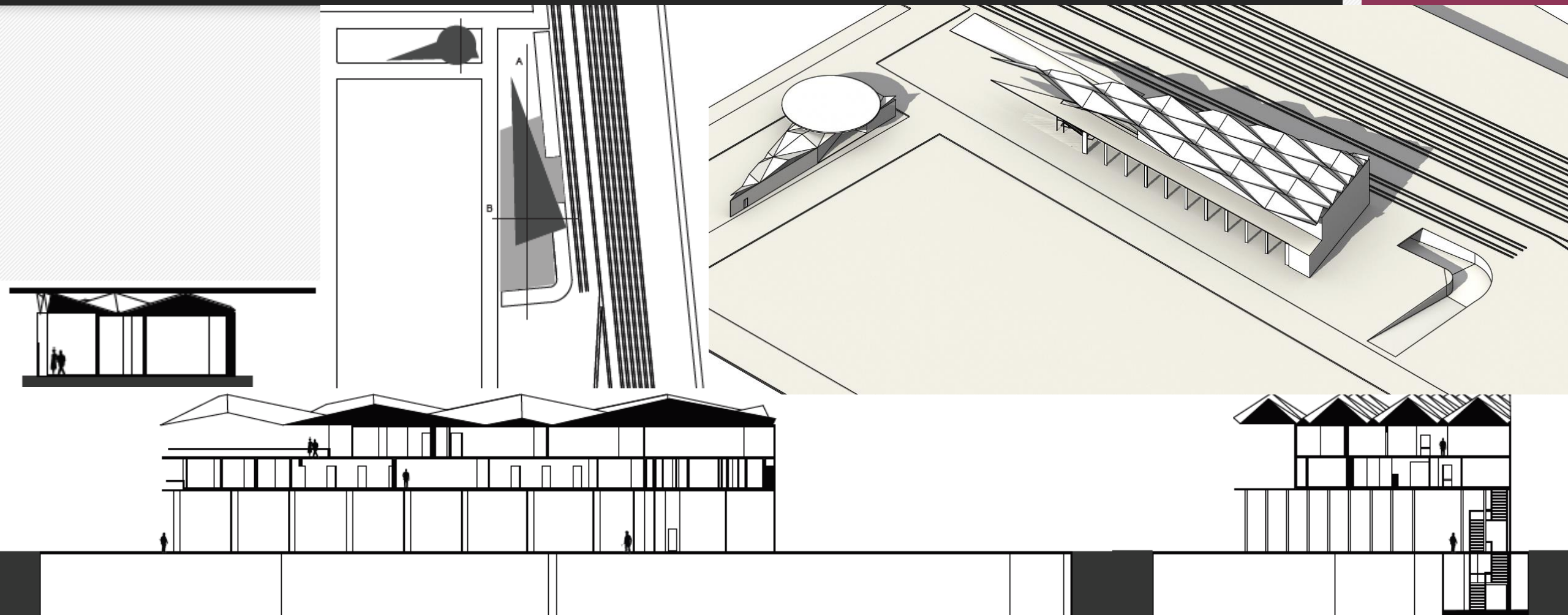
This project's prompt was to design a large scale fire station and dispatch center for the Los Angeles Fire Department. The studio was given a triangular site along the Los Angeles River and given the following deliverables to research and solve architecturally:

1. An apparatus bay with space for 4 trucks, 4 rigs, and 2 ambulances, as well as a maintenance bay to care for the vehicles and equipment.
2. Sleeping quarters for up to 30 firefighters, as well as a bullpen, kitchen and dining facilities, showers, physical exercise space, and a quiet space for relaxation.
3. Offices for the department leaders and chiefs, a conference room, and a computer training room.
4. A dispatch center with offices for logistics, resources, planning, messaging, and operations, as well as a reception area and a break room.

AXONOMETRIC



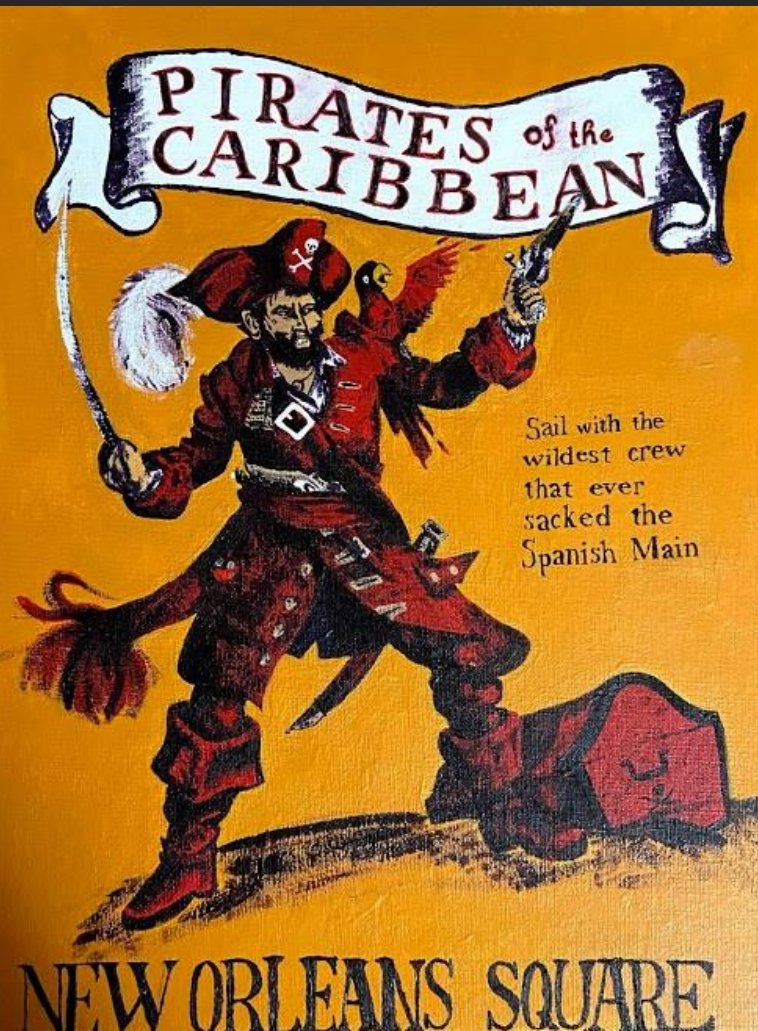
SECTIONS & RENDERS



ART

Various projects

PERSONAL WORK



OUTSIDE-IN HOME

- San Diego, CA
- June 2019



PROJECT INTRODUCTION

The Outside-In home encourages the intermingling of nature and the outdoors with the interior spaces of a home and its inhabitants. By allowing green spaces – in the form of gardens and live walls – to appear both outside and inside the home, the inhabitants are welcomed into an atmosphere of relaxation and comfort.

The green spaces provide fresh, clean air, which is vital in a home so close to a busy freeway. Not only do the gardens and live walls add to an already beautiful view of the San Diego Bay, but they also help reduce noise pollution from the cars, trains, and trolleys.

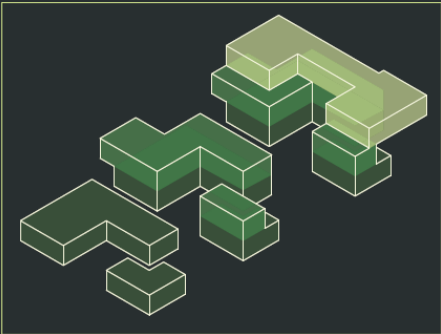
The key concept behind allowing green spaces to enter in the home is to provide a juxtaposition for the senses of the smell and taste. The kitchen and garden will be centerpieces from which the senses of smell and taste will radiate. The kitchen will be used as an activity space to create a more comfortable living environment, and the garden will broadcast a sense of community and tranquility throughout the home.

RESEARCH & CONCLUSIONS

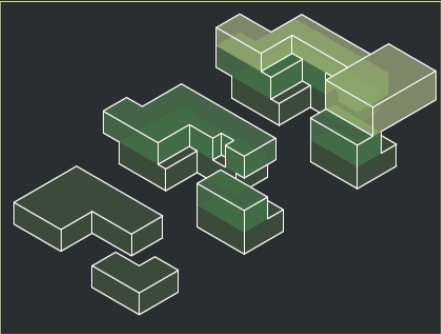
The home will be used by a family with a man, a woman, and at least one child. The child will be enrolled in the nearby Bay Park Elementary School. The woman will grow herbs, fruits, and vegetables in the garden as her main hobby, while the man will use the woman's home-grown foods to cook meals for his family and the surrounding community. There will be an extra "granny-flat" where guests can stay and enjoy a home-grown, home-cooked meal with the family. The family is also very friendly with their neighbors, who also get invited to enjoy meals with the family.

FORM:

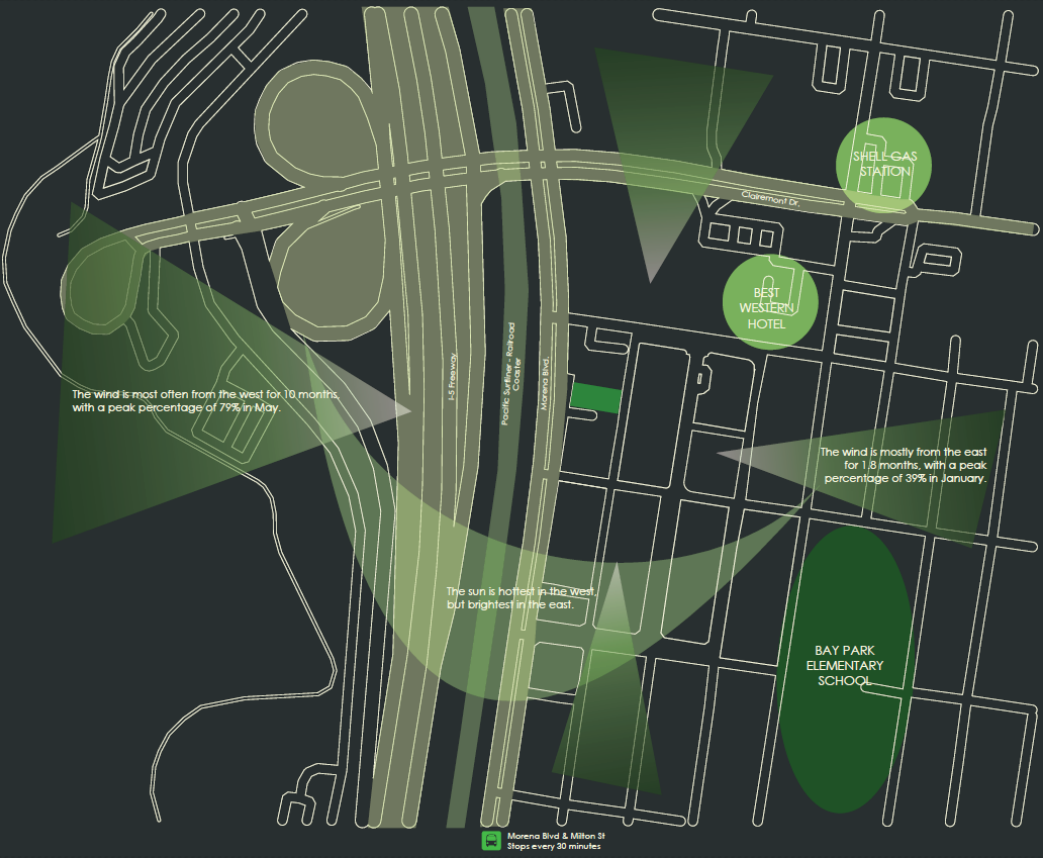
VERSION 1:
MIDTERM



VERSION 2:
FINAL



SPACES	ORIENTATION								INSIDE - OUTSIDE	PRIVATE - PUBLIC	STATIC - DYNAMIC	CONCIOUS - SUB	LIGHT - DARK	LOUD - QUIET
	N	S	E	W	NE	NW	SE	SW						
MASTER BEDROOM														
MASTER BATHROOM														
KITCHEN														
DINING														
LIVING														
GARDEN														
EXERCISE														
WORK														
KIDS BEDROOM														
BATHROOM														
PATIO														
GUEST BEDROOM														
GUEST BATHROOM														
STORAGE														
MECH/ELECTRICAL														



PLANS & SECTIONS



SCENARIOS



The Kitchen

The Kitchen is one of the key focal points in the design of the house. In the kitchen, the man of the house enjoys his hobby of cooking. His wife and son participate while he takes a break to sit down. The family has a guest over, who sits at the island to converse with the wife. The son's Labrador retriever sweetly begs for scraps at the end of the countertop.

This kitchen is a hub of smells, and these smells provide a welcoming and encouraging atmosphere for anybody who comes into the house. The family working together to provide a delicious meal for their guest adds to this feeling of home, comfort, and collaboration.



The Lounge

The lounge becomes a gateway to the garden, the kitchen, and the rest of the home. This pivotal space in the home is another area where the owners of the house can spoil their guests by making them a drink, or by opening the large sliding doors to let in the San Diego breeze. This space makes larger groups much easier to take care of, as well. By opening the doors, the garden opens up into the lounge and creates a place for socialization, cocktails, and enjoyment.



The Garden

Second only to the kitchen, the garden is one of the most influential areas of this house. Not only do smells of the herbs, flowers, and vines attribute to the smells that waft through and around the house, but the fire pits and the barbecues also add a rustic addition to the senses of smell.

Fire is a naturally calming smell, which means it is necessary to make as much use of this as possible. The family has two fire pits installed, each with a different type of atmosphere surrounding them. The large barbecue area and bar top add to an already sociable space, and the shape of the granny flat promotes inclusion and interest in the get-togethers that occur in this space.

SECTIONS



Granny Flat

The granny flat is an extra building on the property which has one bathroom, a living room, a patio, a kitchenette and spacious dining area, and two bedrooms. This guest house serves as a place where the owners of the property can either invite the in-laws or out-of-town family members to come and stay for a few days, or the son can move into the house once he becomes old enough, or the family can rent it out as an Airbnb. If they rent out the house, the family may charge a little extra to include the tenants in their family dinner events that happen almost every night.



Bar & Stair

The staircase is a focal point of circulation of a house. In this house, the staircase is in plain view of the garden, however, it is not necessary for guests to venture into the private spaces of the home, because the public spaces create an invisible divide between this circulatory area.



West End

This section shows the kitchen and dining room, the street-entry foyer, one bedroom, a living room, the exercise room, a second bedroom, a bathroom, and a couple of patios.