



INTERIOR DESIGNER

FANG HO
S A B R I N A

FANG HO

SABRINA

Interior Designer / LEED Green Associate

Visa Status: Permanent Resident
+1 929-234-9022
sabrinafho@gmail.com
San Francisco, CA 94131

Professional Experience

Project Designer

Smart Space LLC, NYC (Sep/2017 - Present)

Oskar (Luxury Apartment) / Completed 2019
Scope includes millwork, glass front, glass works and metal works throughout whole amenity & reception area
Prepared/reviewed all project documentation including quote, change order, schedule, shop drawings, etc
Assisted Director to oversee project teams' performance and quality to ensure material procurement and on-site delivery deadline were met.
Cooperated/ communicated with manufactures/fabricators/engineer to design and finish final products (Utilized 3D/2D tools & hand sketches)
Cooperated/ communicated with Tishman (General Contractor) & CetraRuddy Architects & Moinian Group (Ownership)
Materials and fabrication methods research

PLG (Luxury Apartment) / Completed 2020
Scope includes glass front, glass works and metal works throughout whole amenity & reception area
Prepared/reviewed all project documentation including quote, change order, schedule, shop drawings, etc.
Assisted Company partner to oversee project teams' performance and quality to ensure material procurement and on-site delivery deadline were met.
Cooperated/ communicated with field operations & Whitehall interiors (Construction meeting and design meeting)
Cooperated/ communicated with manufactures/fabricators to design and finish final products (Utilized 3D/2D tools & hand sketches)

Kea Engineers Office (Cooperate Office) / Completed 2018
Assisted Project Manager on office furniture selection & office furniture layout
Assisted Project manager to oversee installation teams' performance and quality to ensure material procurement and on-site delivery deadline were met.
Prepared/reviewed project documentation including quote, change order, layout, etc.
Cooperated/ communicated with Architect to finish final design (Utilized 3D/2D tools)

Shinhan Bank Reception & Office (Cooperate Office) / Under construction
Scope includes millwork, glass works and metal works throughout whole reception area
Prepared/ reviewed full set of shop drawings
Provided professional design & budget suggestion
Attended designer/ ownership meetings

2 Washington St. (Luxury Residence/ Long-term Leasing Hotel) / Under Construction
Scope includes glass works throughout whole amenity area and railing at roof top
Prepared/reviewed all project documentation including quote, change order, schedule, shop drawings, etc.
Cooperated/ communicated with manufactures/fabricators/engineer to design and finish final products (Utilized 2D tools & hand sketches)
Assisted Company partner to oversee project teams' performance and quality to ensure material procurement and on-site delivery deadline were met.
Cooperated/ communicated with CCM Construction (General Contractor) & Moinian Group (Ownership) to finish installation and final design
Materials and fabrication methods research

Other project:
HardRock Hotel (Themed Hotel) / Under Construction
RSM (Coorporate Office) / Completed 2019

Interior Intern

Steffian Bradley Architecture, Boston (June/2016 - August/2016)
Participated process of developing conceptual designs
Assisted project designers on healthcare and office projects (Included materials selecting and products searching; utilized 2D tools & 3D tools to create architectural diagrams and drawings)
Communicated between designers and material companies / Managed and organized material library

Education

Rhode Island Schoold of Design 2015-2017 (Master of Designe / Interior Architecture)
Brown University 2017-2017 (Class in Urban Study / Architects and Planners as Transnational Experts)
Shih Chien University 2014-2014
(Continued Education / Drafting of Architectrual Drawing & Constuction Drawing; Material Knowledge and Investigation)
Chang Gung University 2010-2013 (Bachelor of Science / Occupational Therapy)

Skill

Rhino / AutoCAD / Sketchup / Revit / Adobe Suite / Microsoft Office

Contents

| | |
|----------------|----|
| Oscar | 6 |
| PLG | 22 |
| KEA | 38 |
| Two Washington | 48 |
| Other Drawings | 54 |

OSCAR

NEW YORK, NY 10036

Luxury Apartment

Completed 2019

Owner: Moinian Group

Architect/Designer: CetraRuddy Architects



Scope includes millwork, glass front, glass works and metal works throughout whole amenity & reception area.

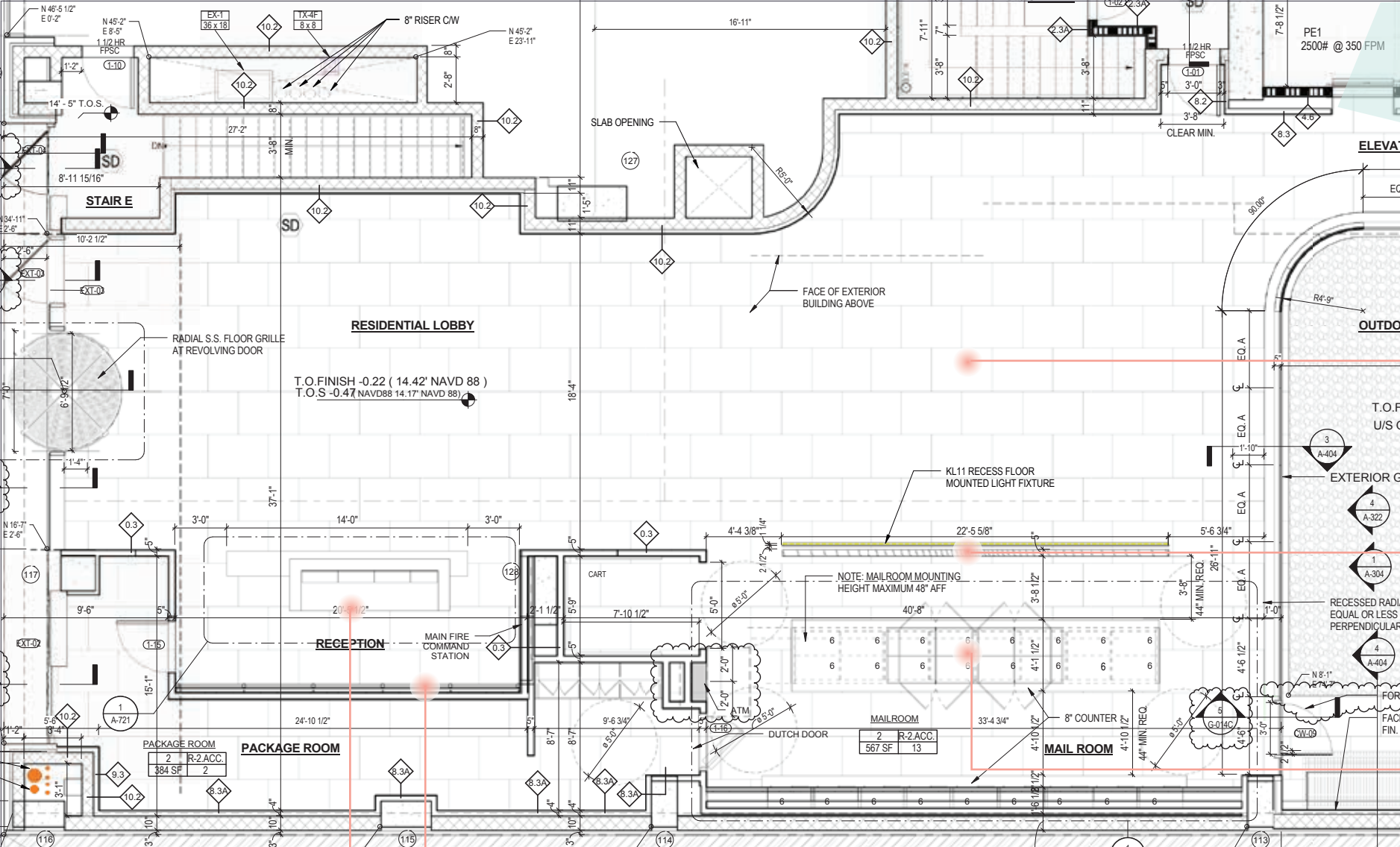
Prepared/reviewed all project documentation including quote, change order, schedule, shop drawings, etc.

Assisted Director to oversee project teams' performance and quality to ensure material procurement and on-site delivery deadline were met.

Cooperated/ communicated with manufactures/fabricators/engineer to design and finish final products. (Utilized 3D/2D tools & hand sketches)

Cooperated/ communicated with Tishman (field operation), CetraRuddy Architects and Moinian Group (Ownership)

Materials and fabrication methods research.



GROUND FLOOR

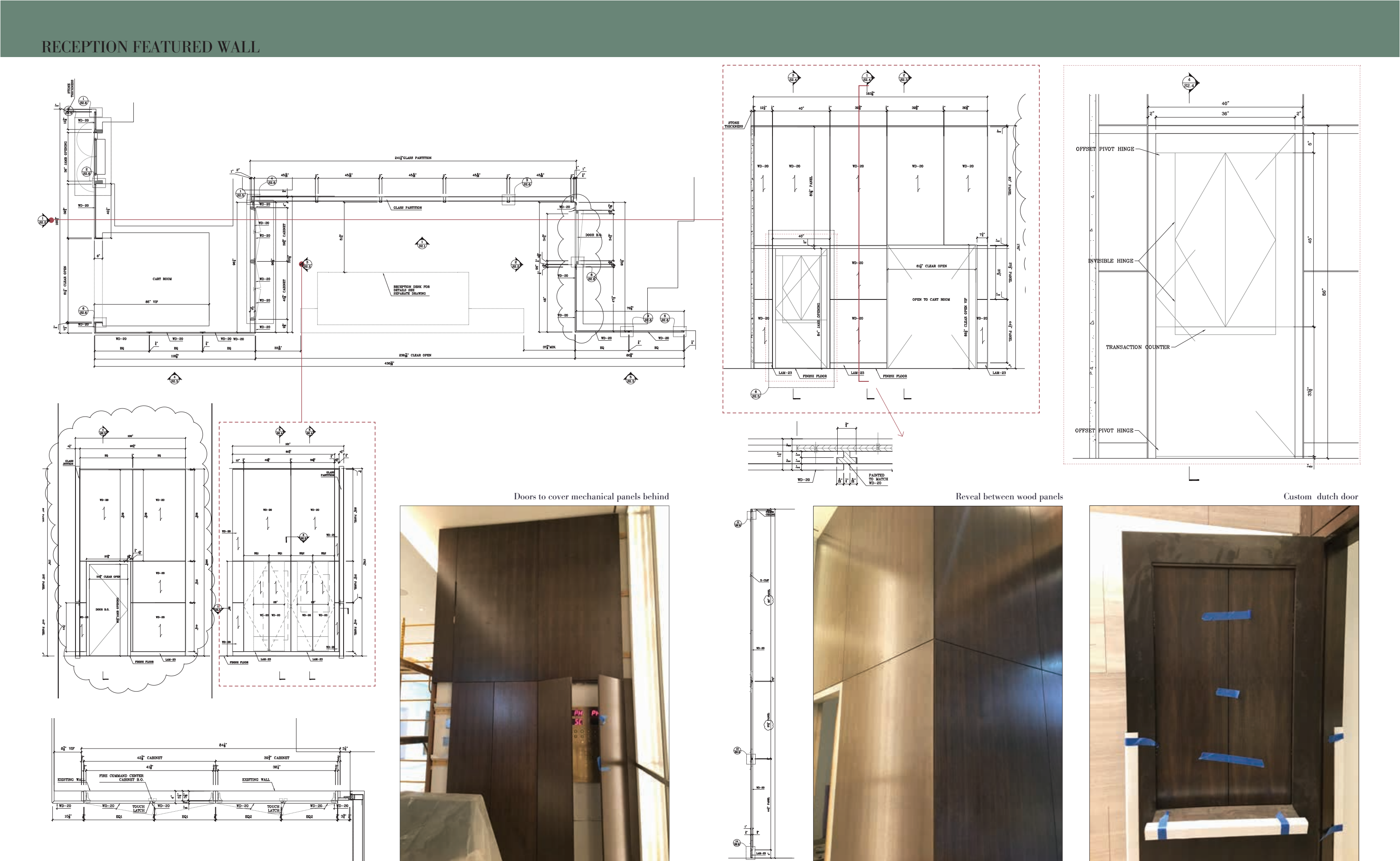
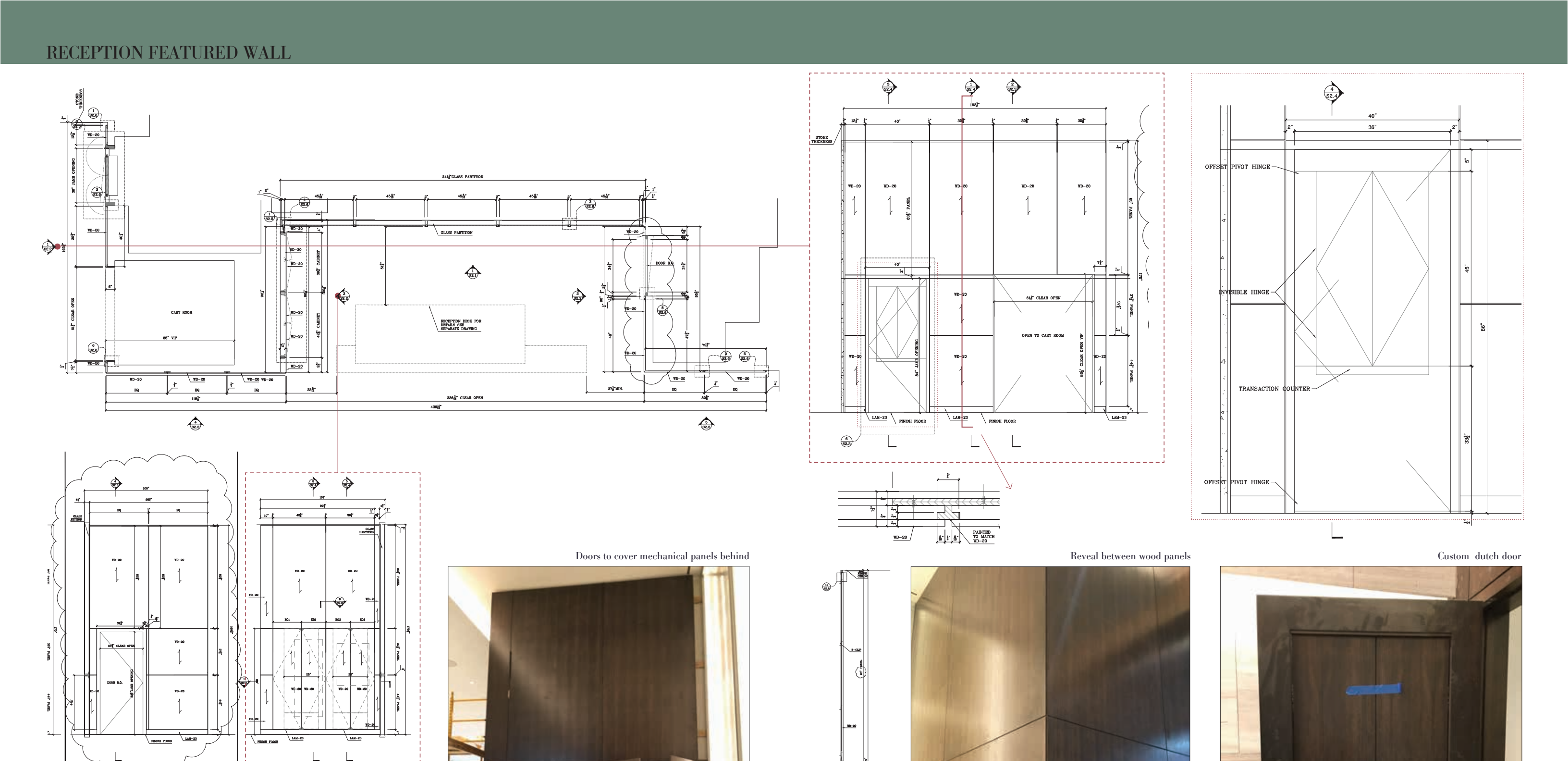
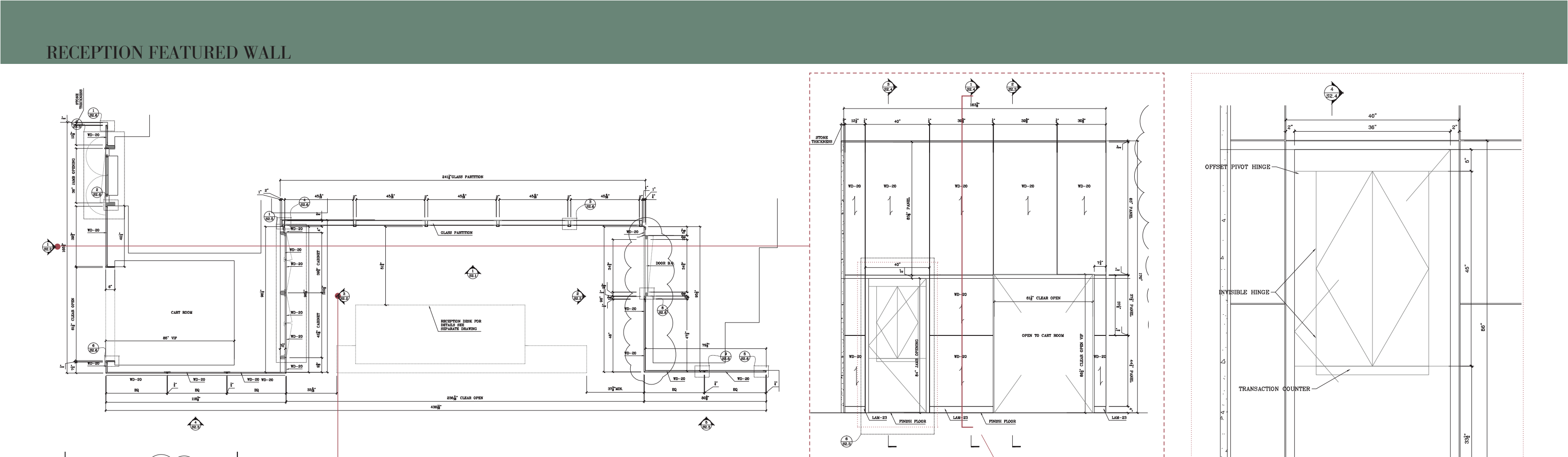


Curved Ceiling Panel

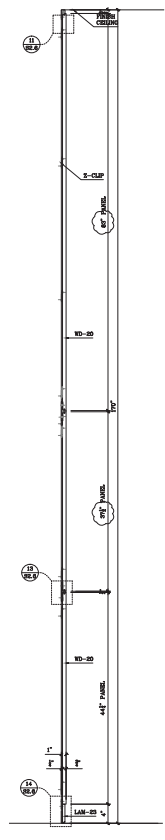
Mailroom Fin Wall
Mailbox

Reception Desk
Reception Featured Wall



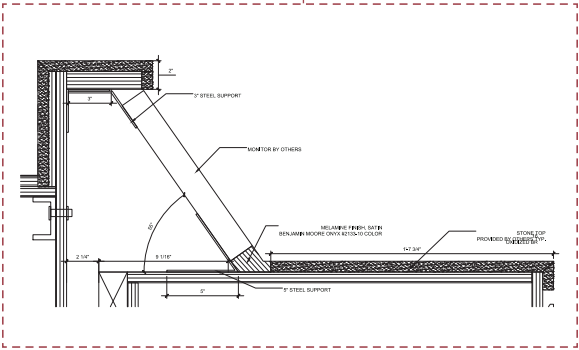
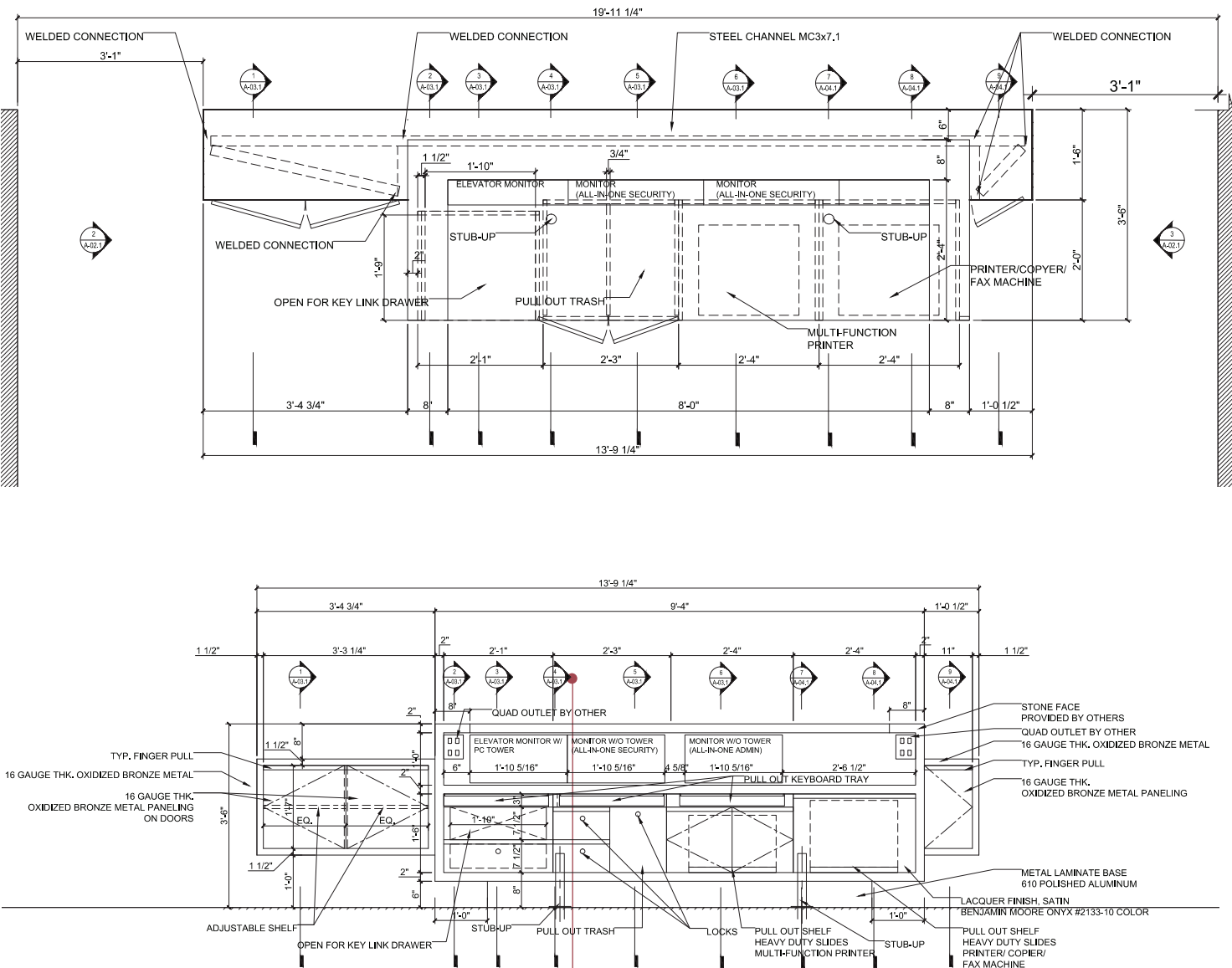


A photograph of a dark wooden cabinet or wardrobe. The cabinet has two doors, one of which is slightly ajar, revealing a digital display inside. The display shows 'PM 3:14' and 'P1' in red. Below the display, there are several small, square buttons or indicators. The cabinet is set against a light-colored wall, and a window with vertical blinds is visible on the right side. A white object, possibly a bag or a piece of clothing, is visible in the bottom left corner.

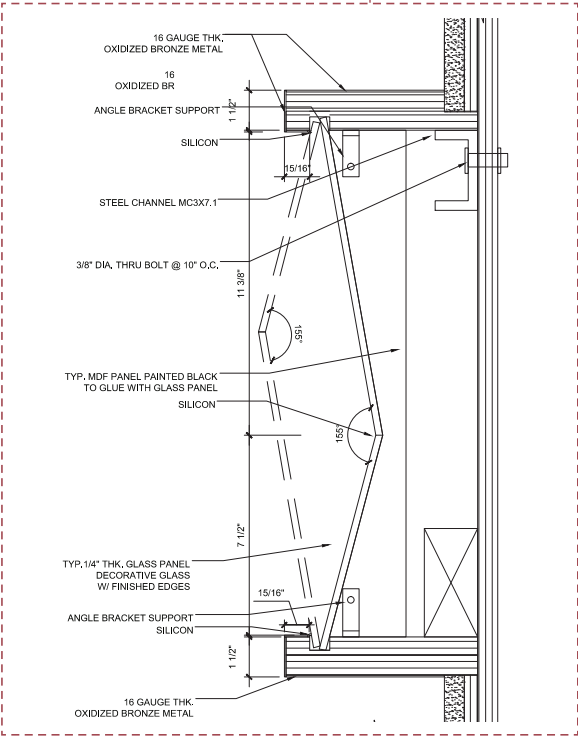
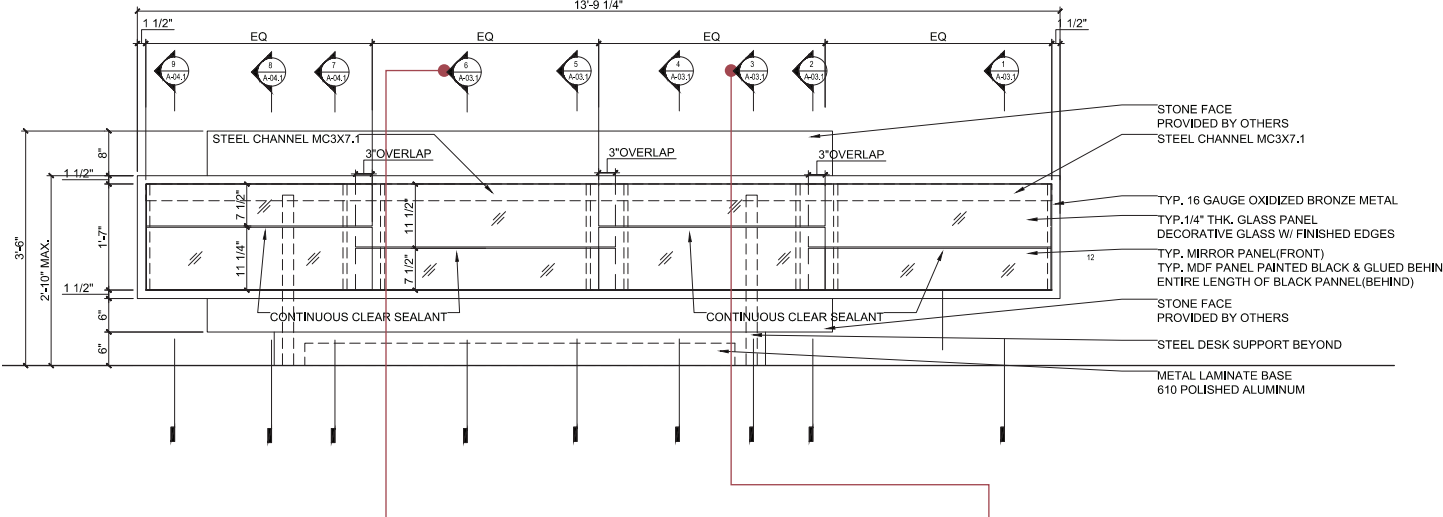
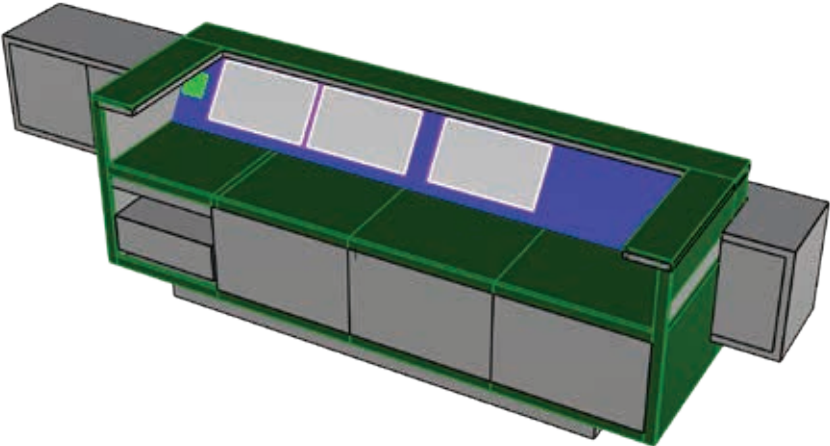


A photograph of a dark wooden cabinet with a white shelf. The cabinet is secured with blue tape. The tape is applied to the top, bottom, and sides of the cabinet, as well as to the shelf. The background is a light-colored wall.

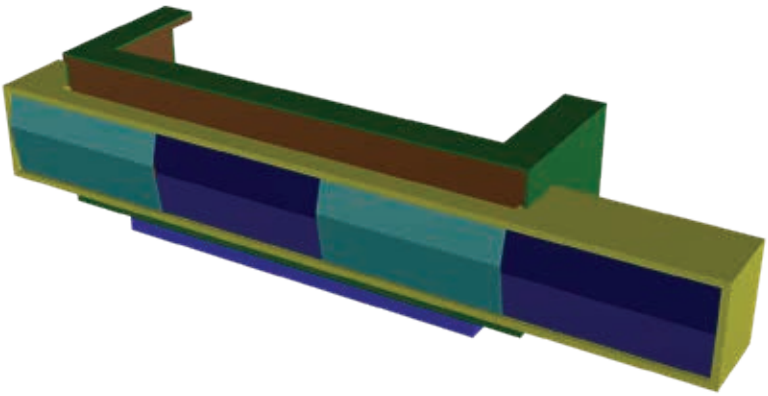
RECEPTION DESK



Monitor support detail

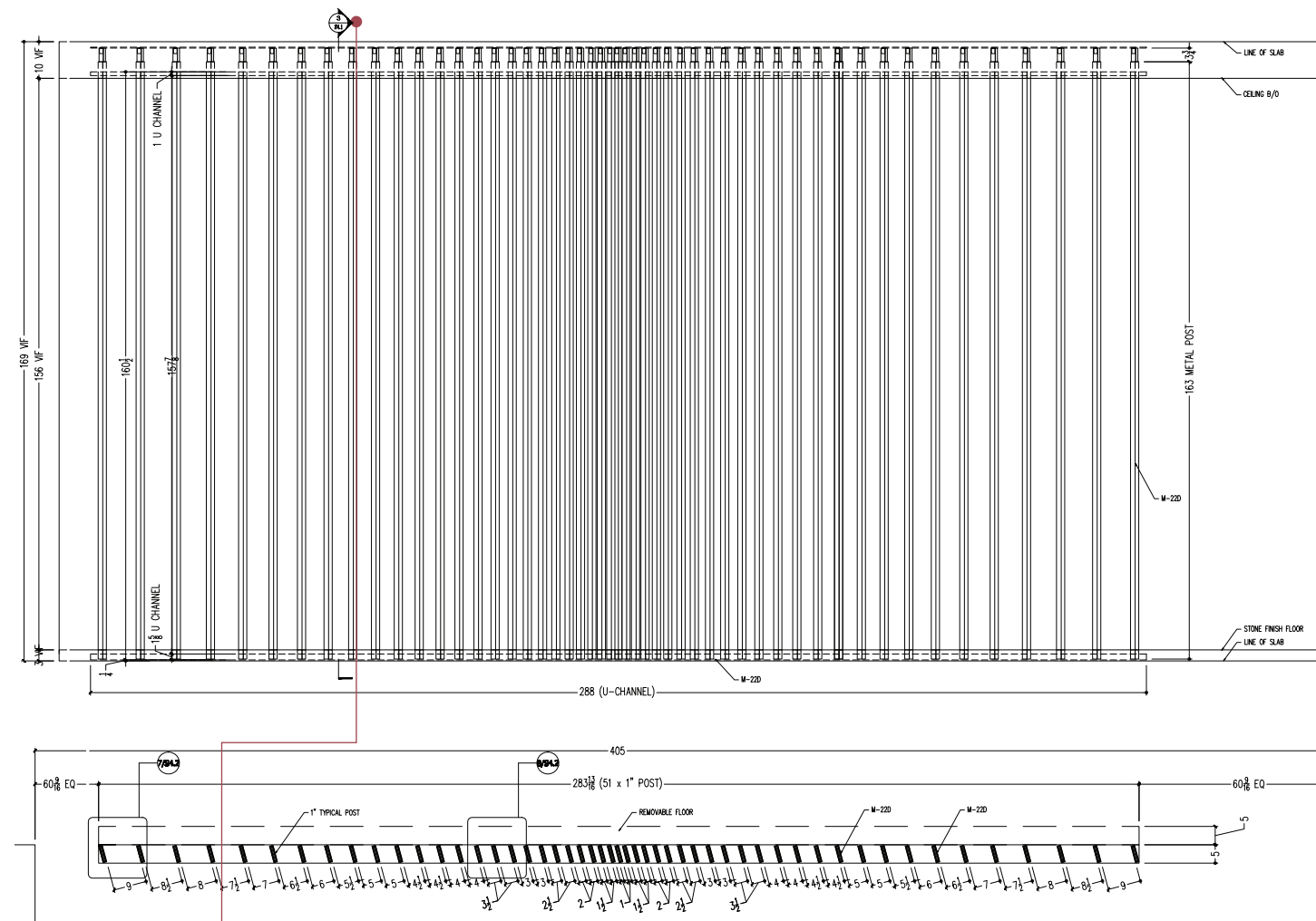


Decorative glass detail

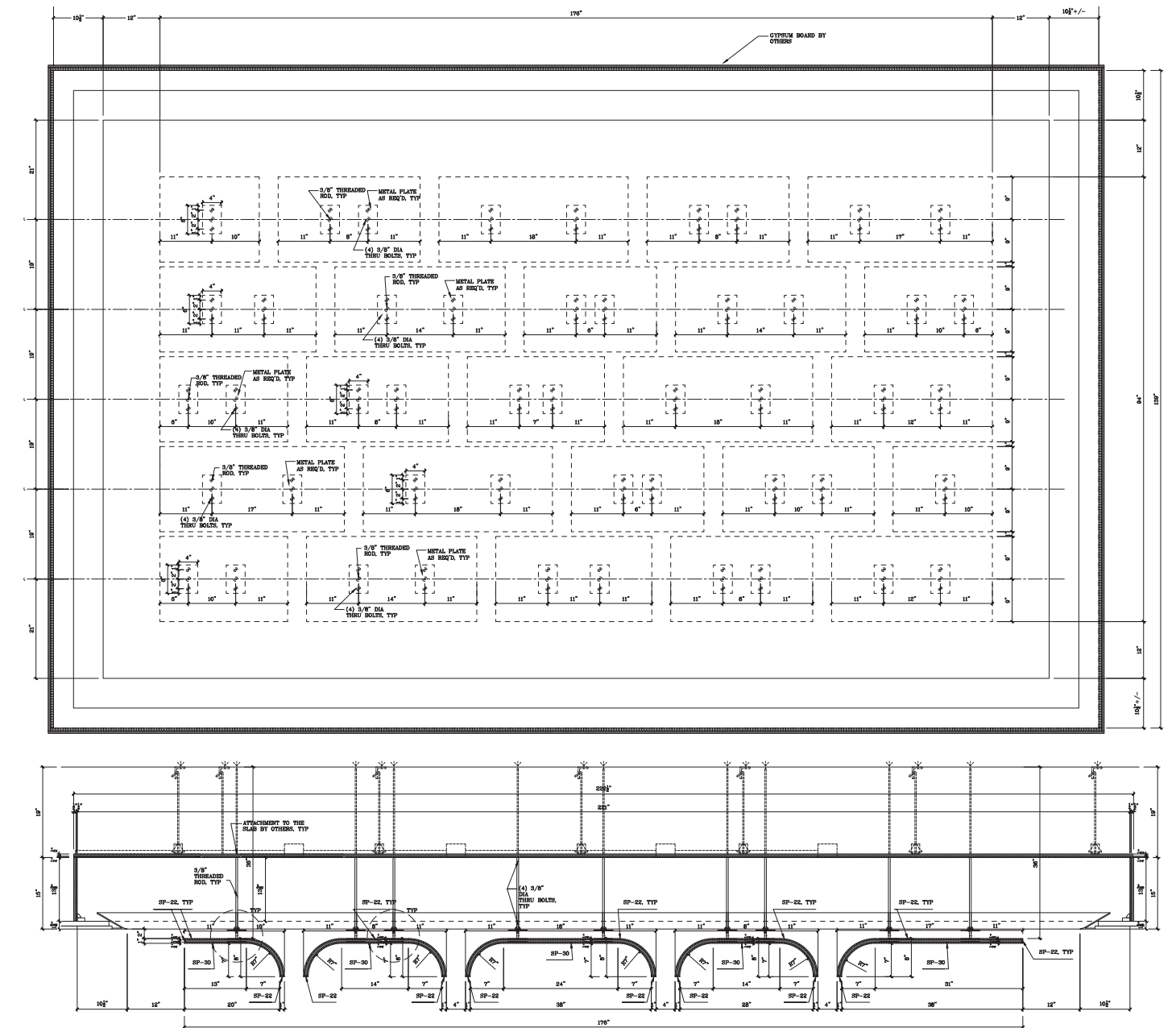
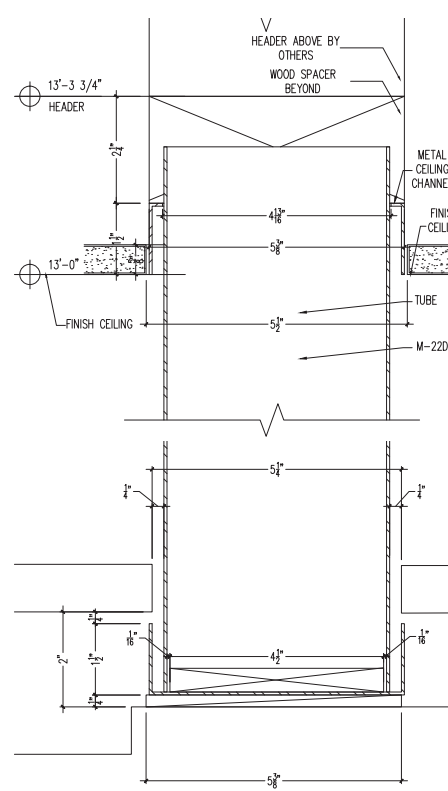
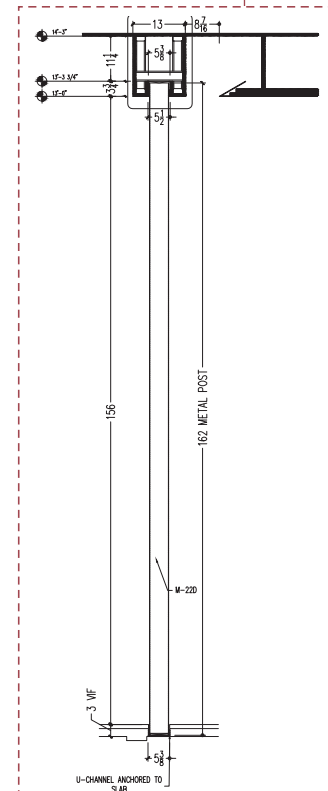


FIN WALL

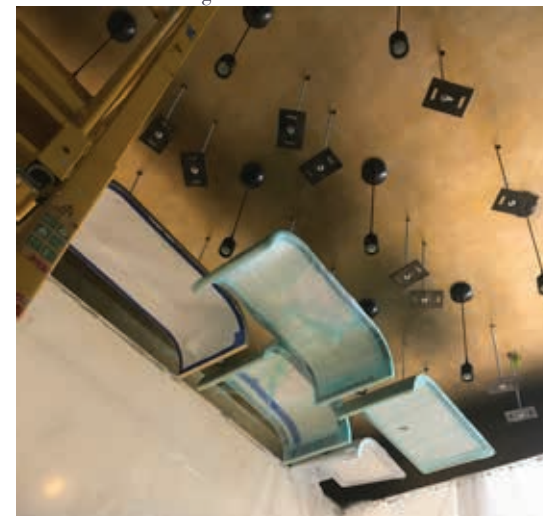
LOBBY CEILING PANEL



Structure Detail



Golden Leaves Ceiling Finish



Lacquer Ceiling Panel

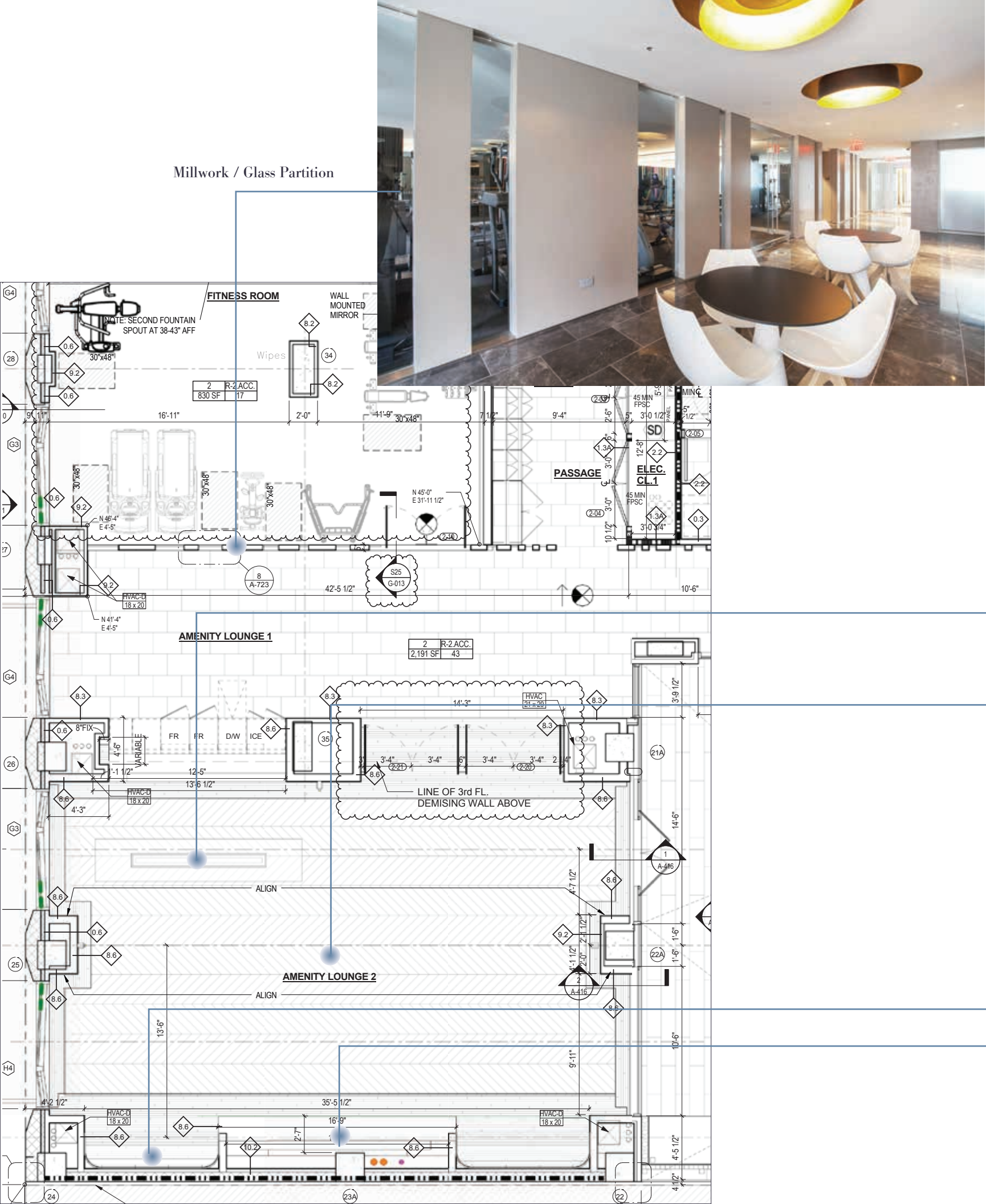


SECOND FLOOR

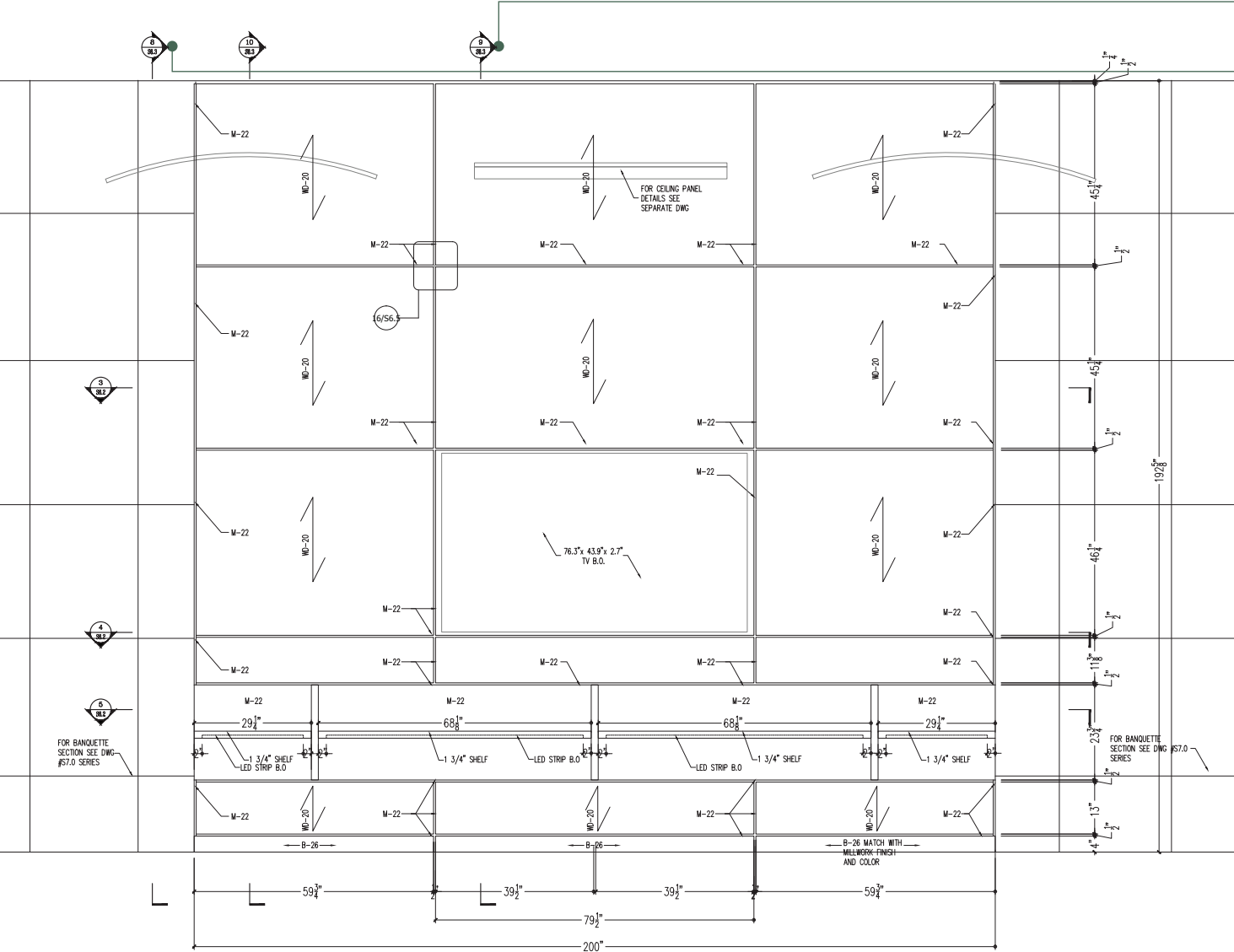
Hanging Ceiling
Bar Table



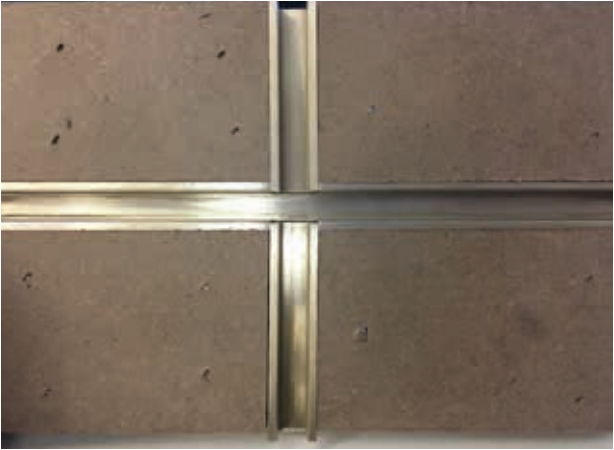
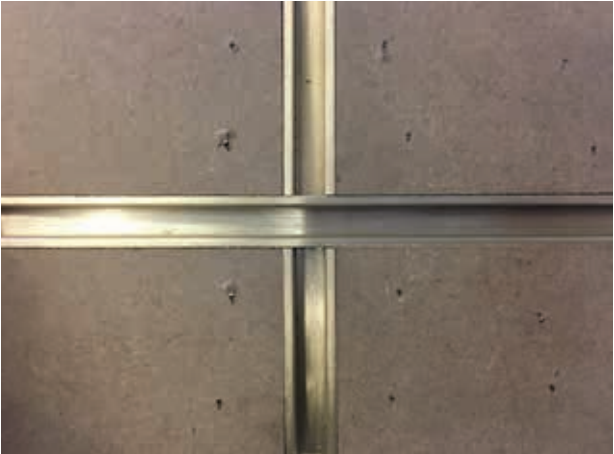
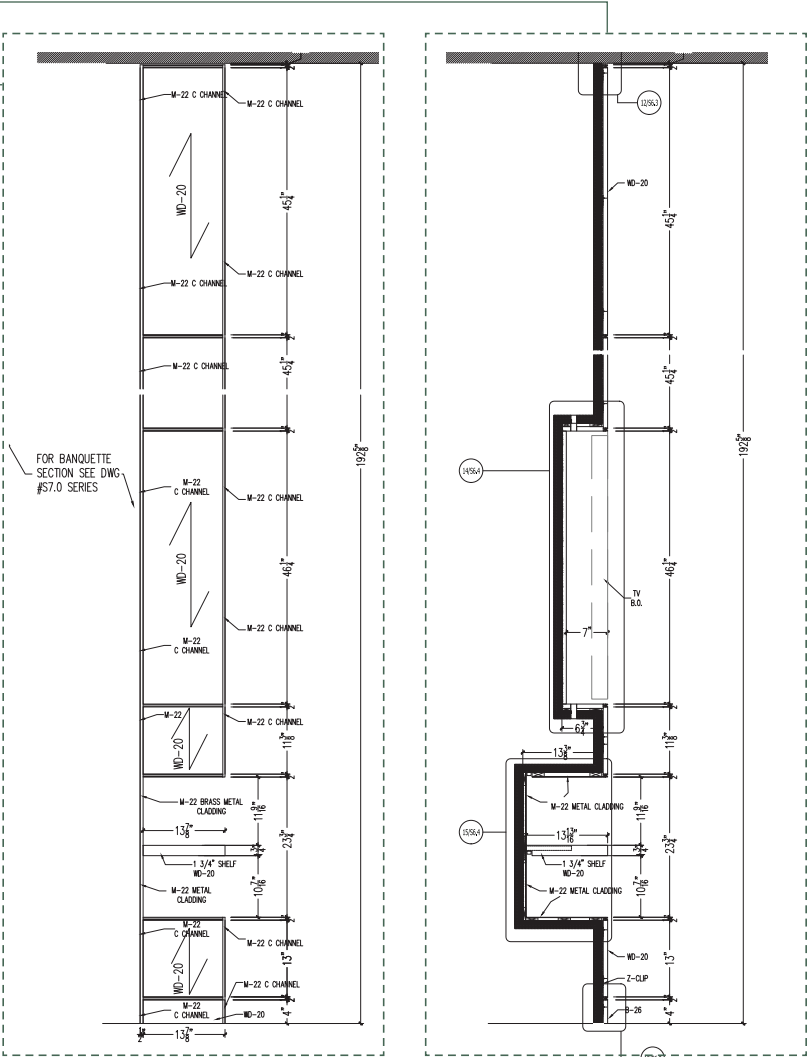
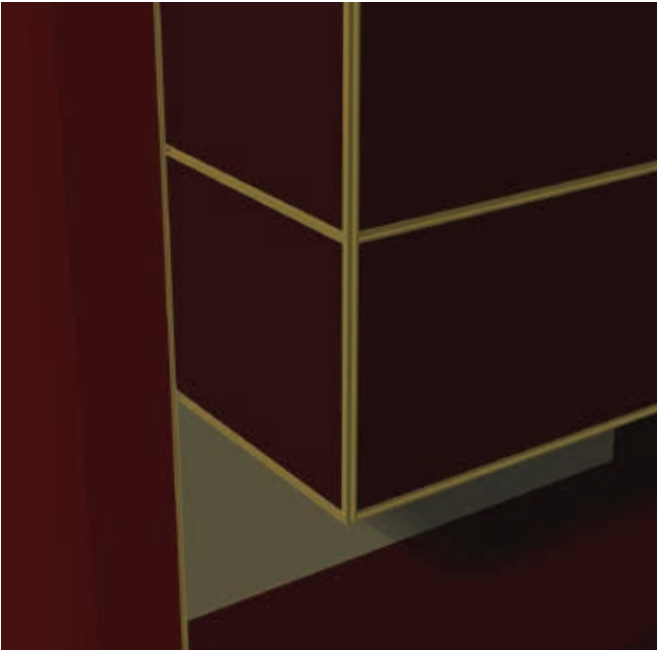
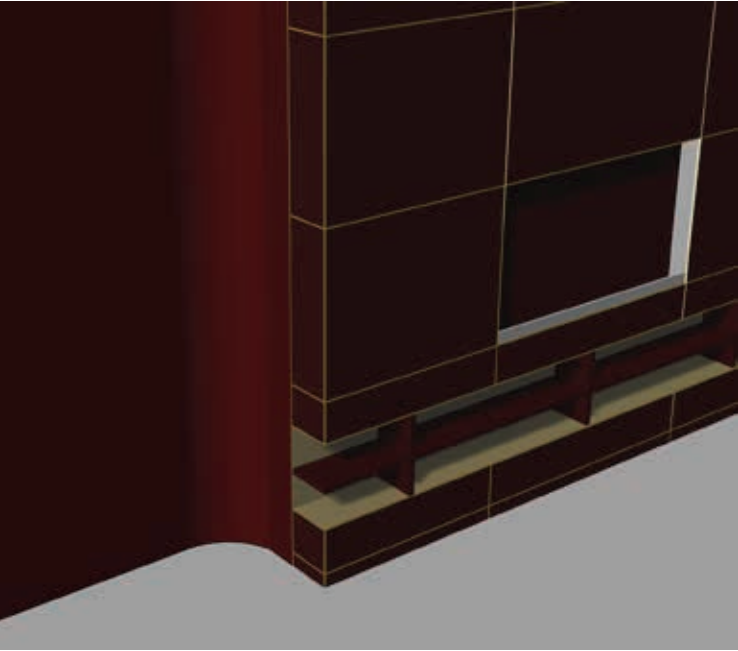
Upholstery Banquette
Featured Wall w/ Book Shelves



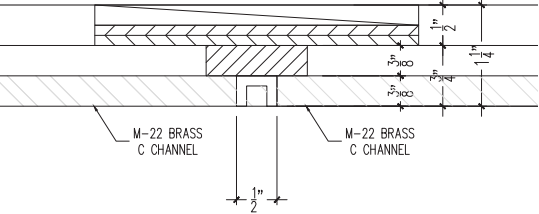
BOOKSHELVES



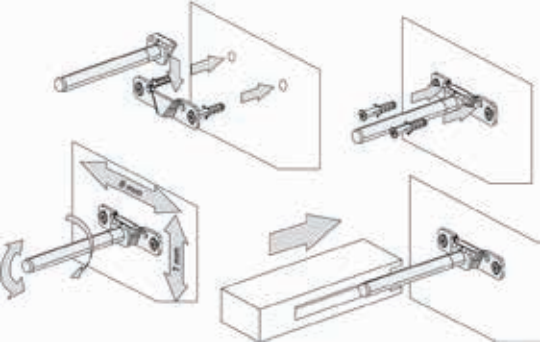
Metal Reveal Details



Metal Reveal Details

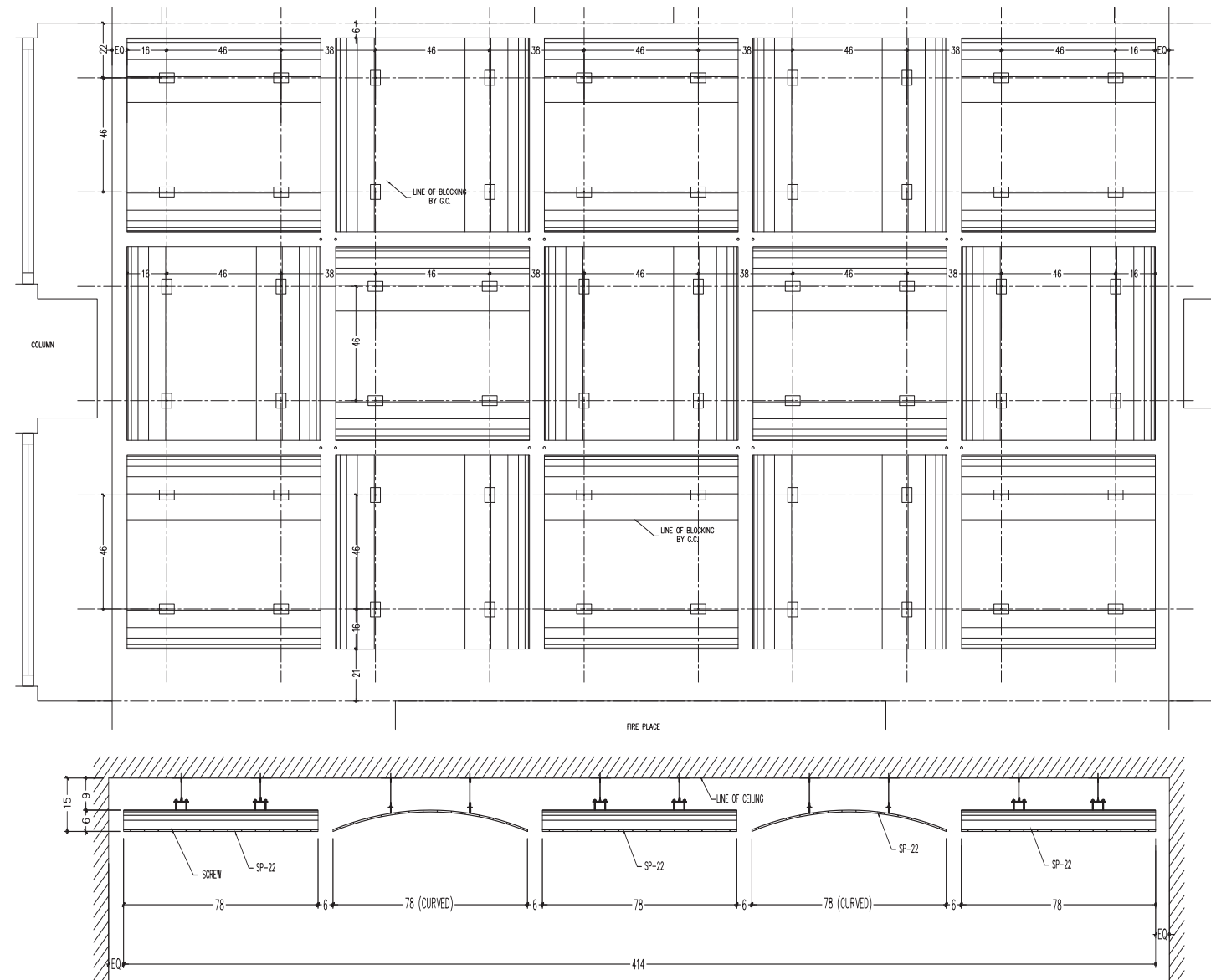


Hardware for Bookshelves

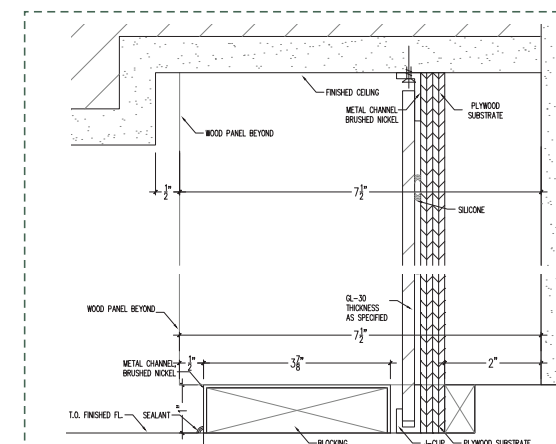
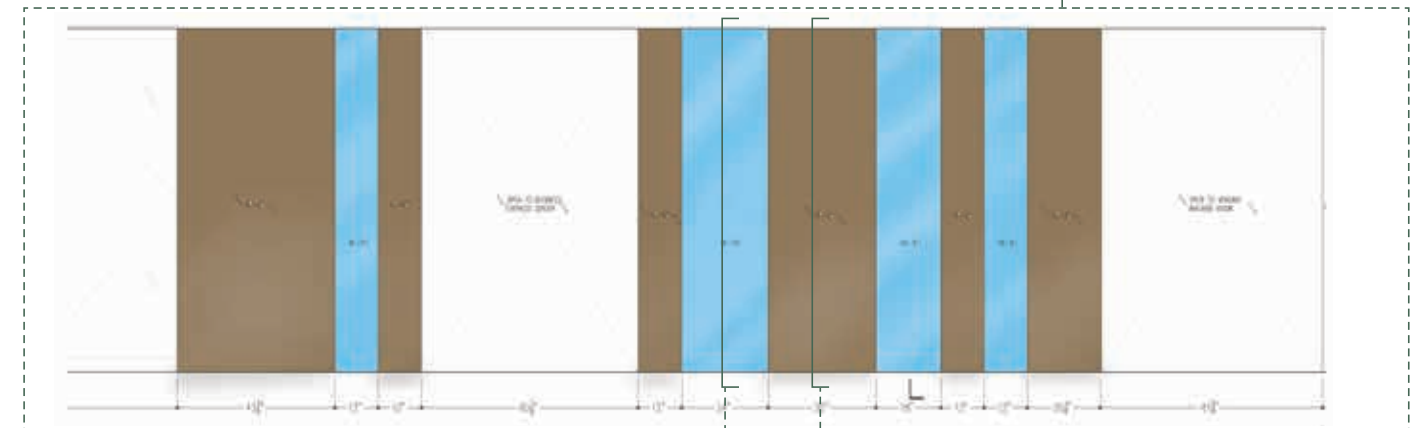
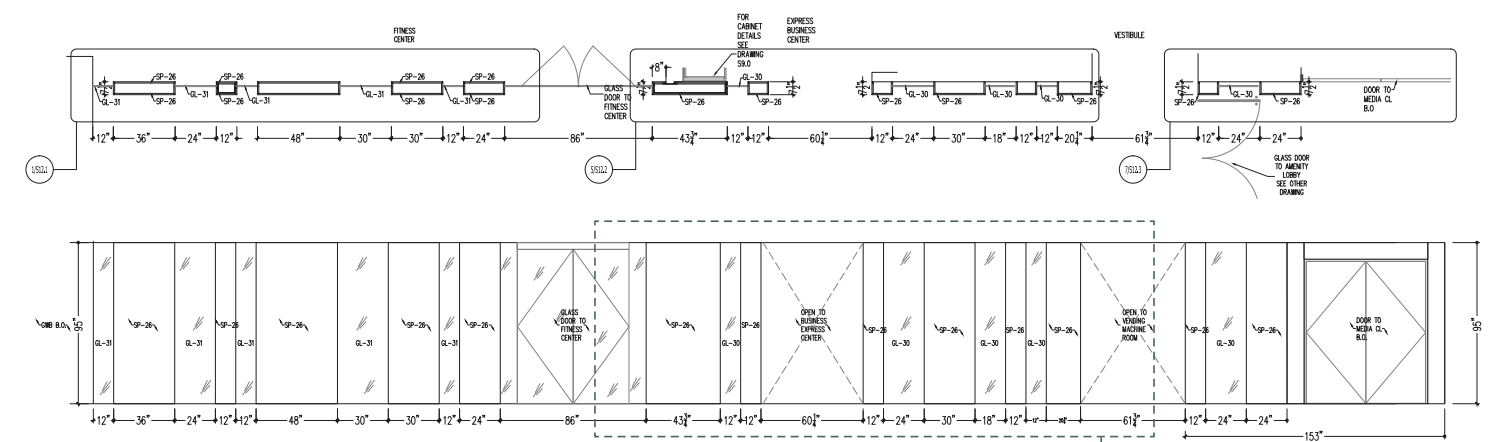
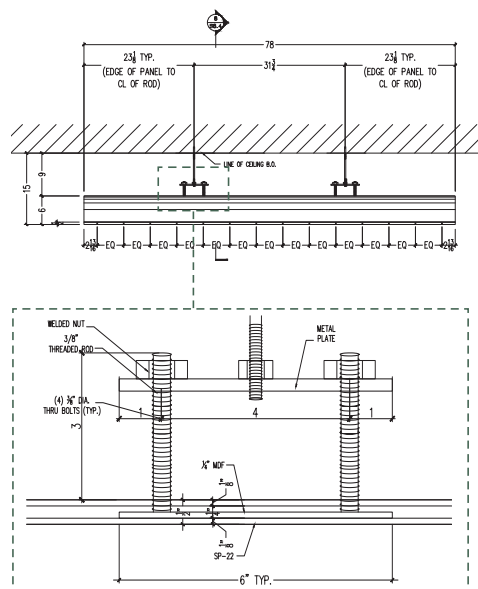


CURVED CEILING PANELS

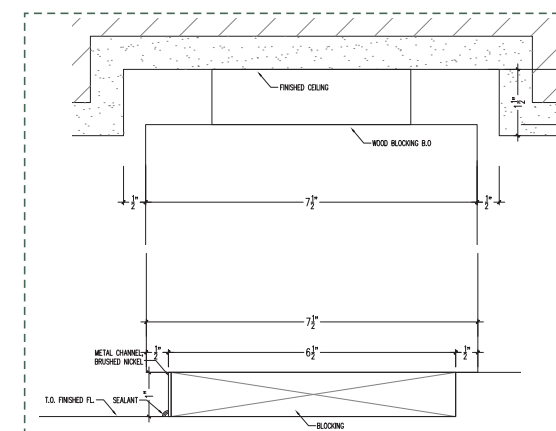
MILLWORK & GLASS PARTITION



Ceiling Panel Suspension Detail



3.3 Mirror Panel Detail



Millwork Panel Detail



PLG

BROOKLYN, NY 11226

Luxury Apartments

Under Construction

Owner: Moinian Group

Architect/Designer: Hill West Architects/Whitehall



Scope includes glass front, glass works and metal works throughout whole amenity & reception area.

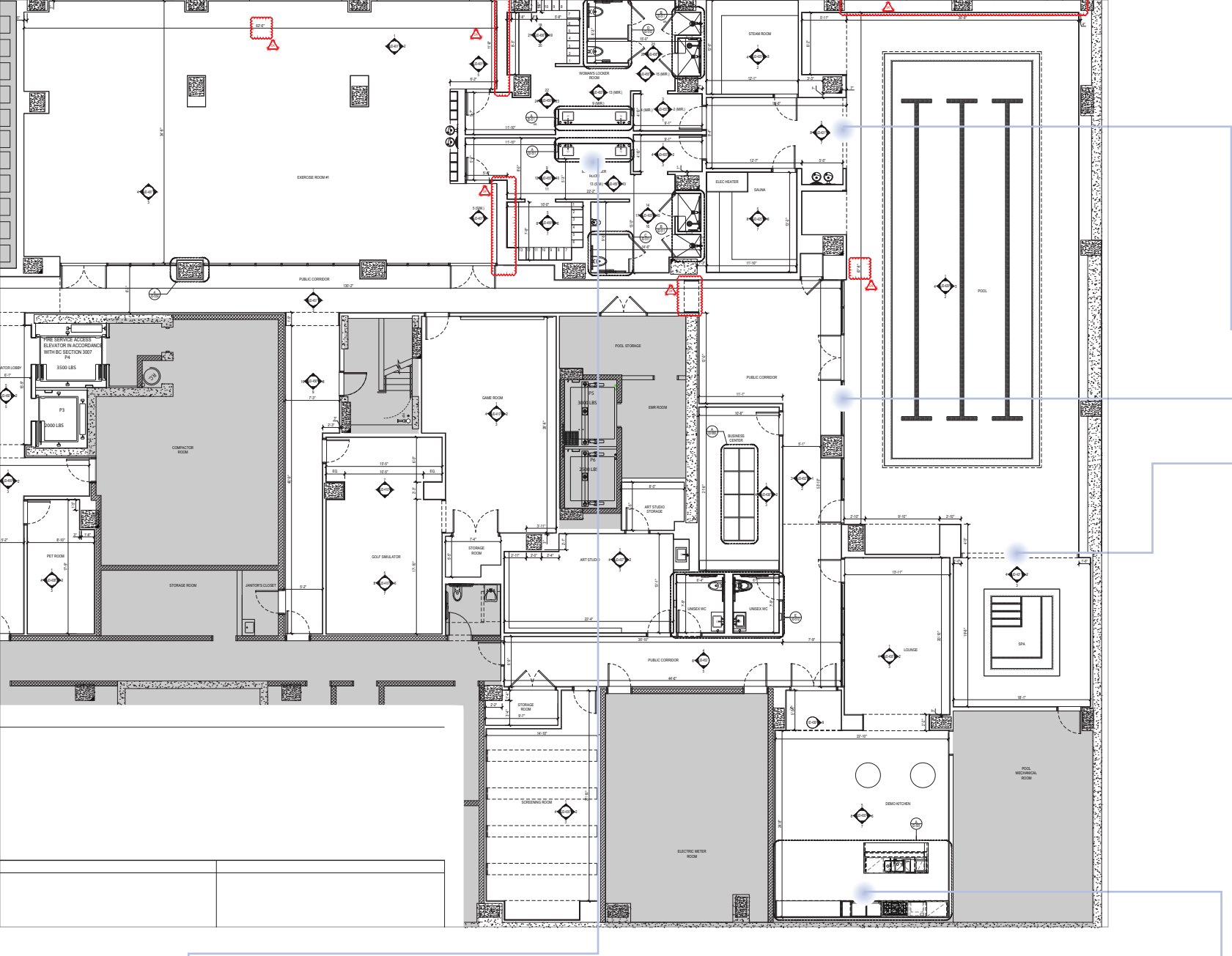
Prepared and reviewed all project documentation including quote, change order, schedule, shop drawings, etc.

Assisted Company partner to oversee project teams' performance and quality to ensure material procurement and on-site delivery deadline were met.

Cooperated and communicated with field operations & Whitehall interiors. (Construction meeting and design meeting)

Cooperated and communicated with manufactures and fabricators to design and finish final products. (Utilized 3D/2D tools and hand sketches)

CELLAR FLOOR



Decorative Transom / Glass Front

Kitchen Metal Cabinets / Glass Decoration



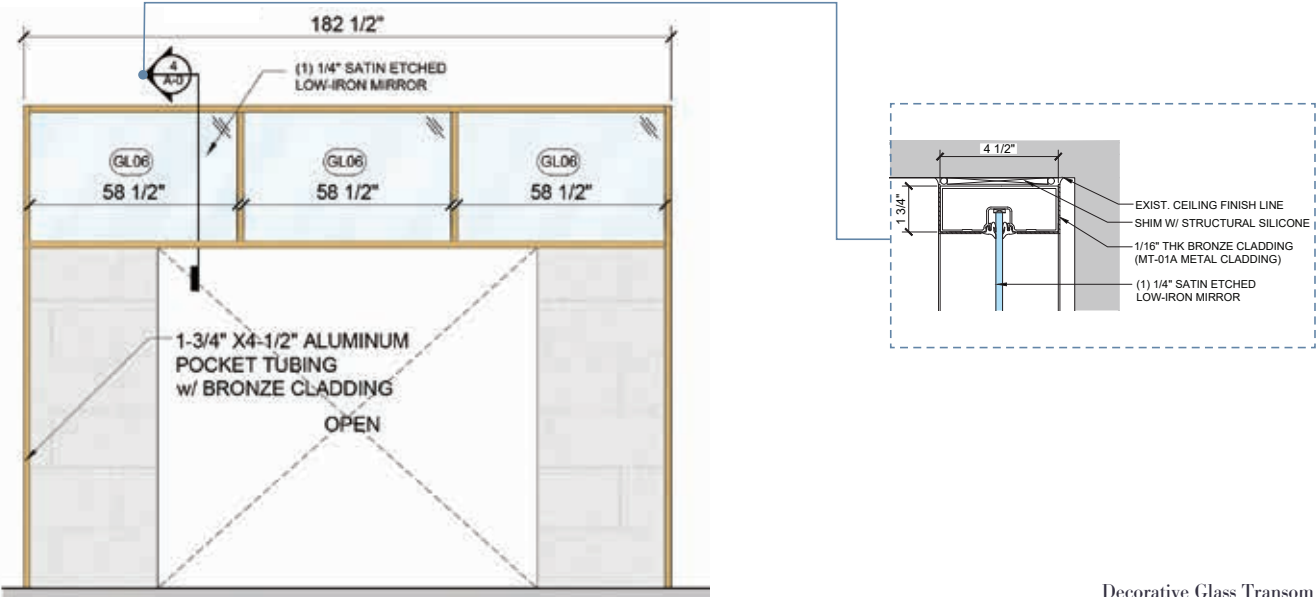
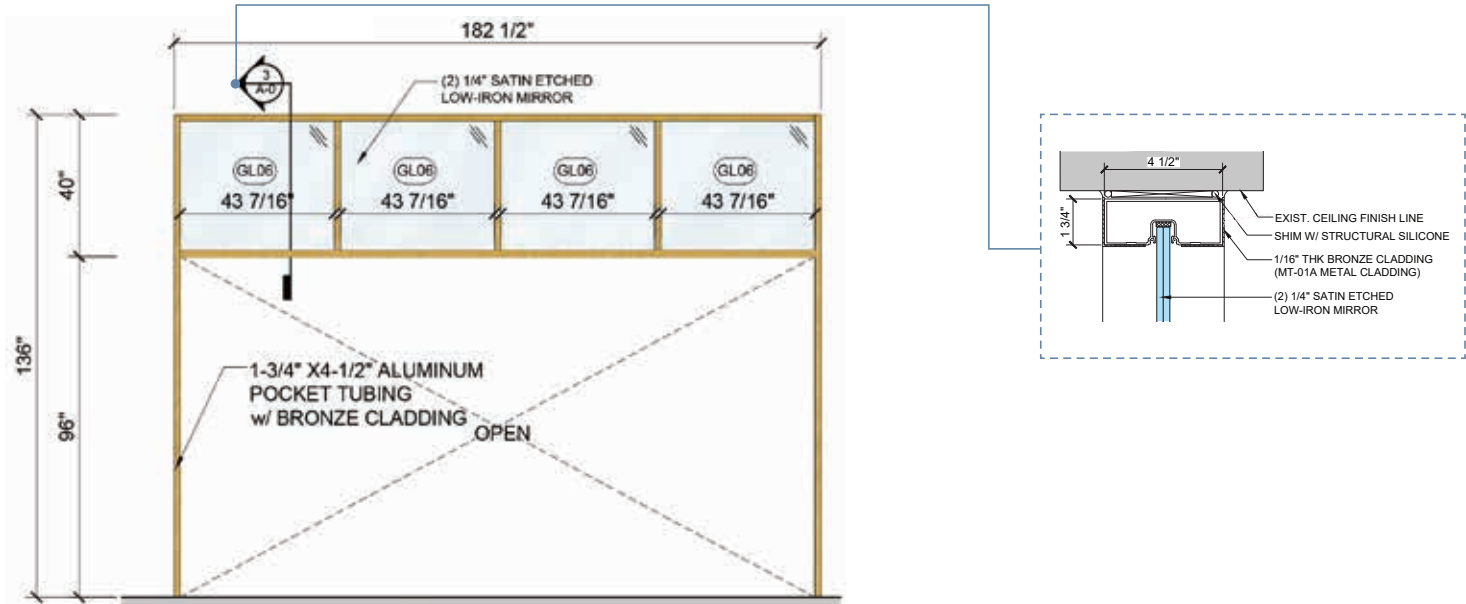
Custom Mirrors



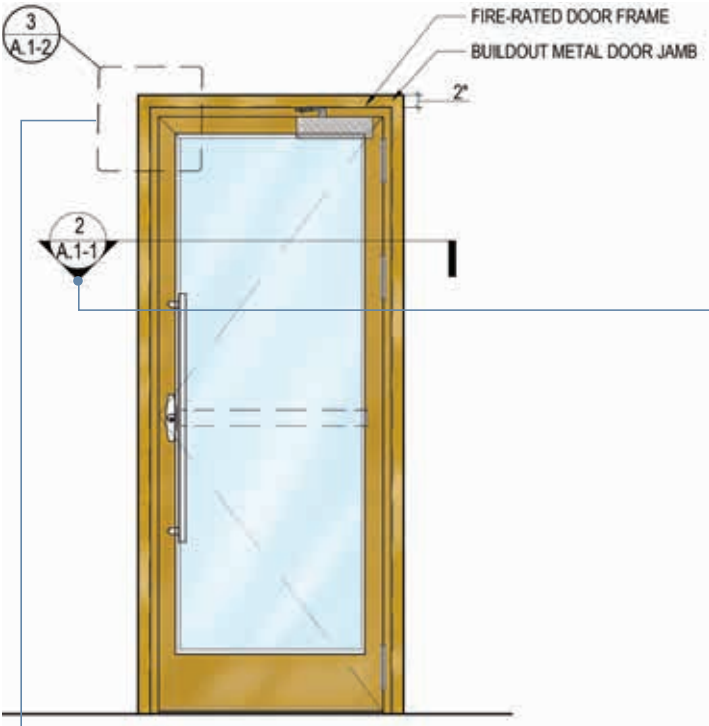


Metal Glass Cabinets Mock-up

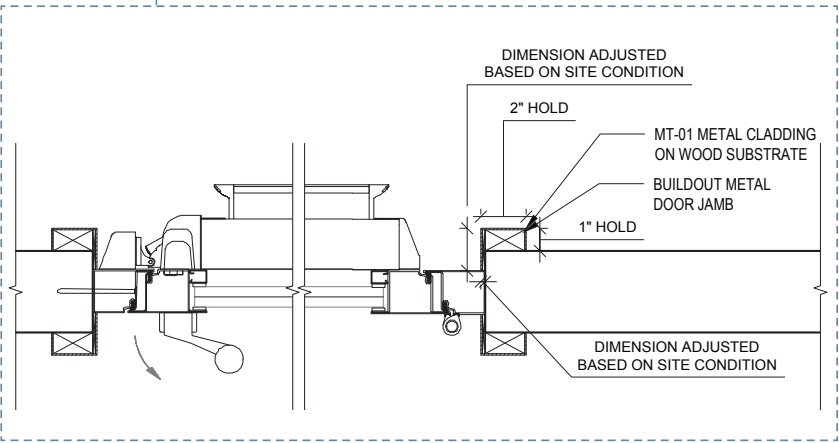
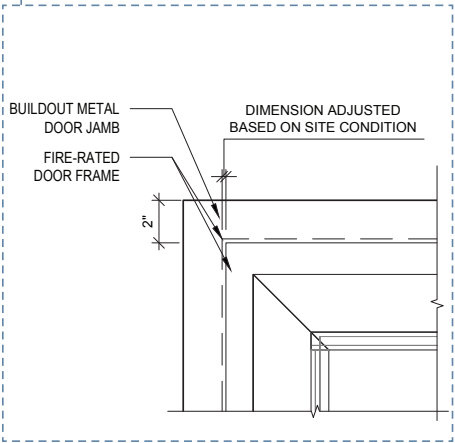




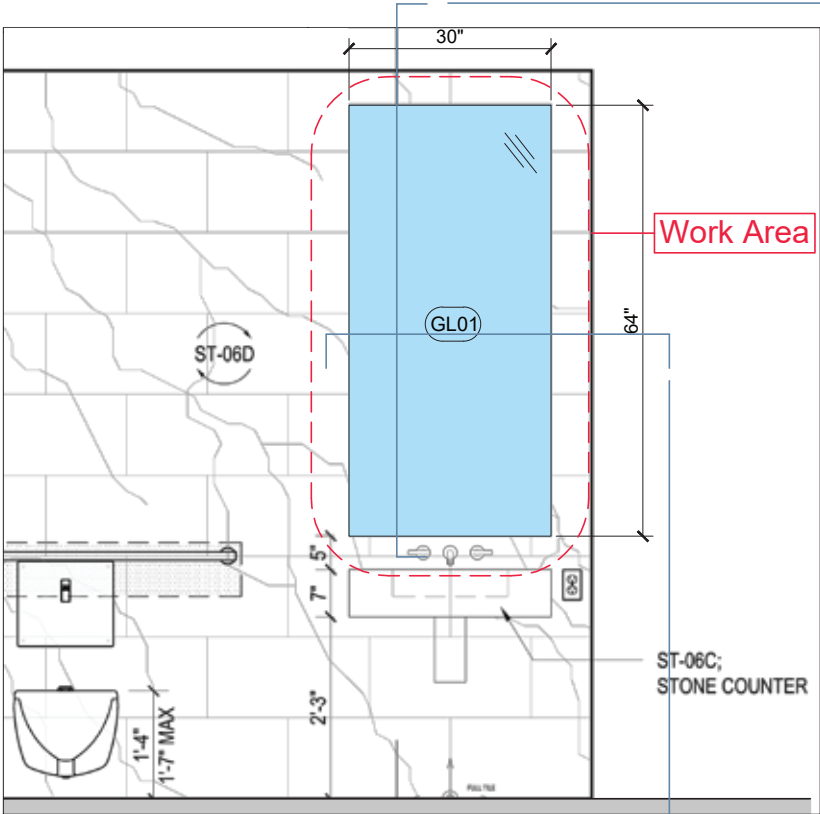
Decorative Glass Transom



Fire-rated Door & Built-out Door Frame



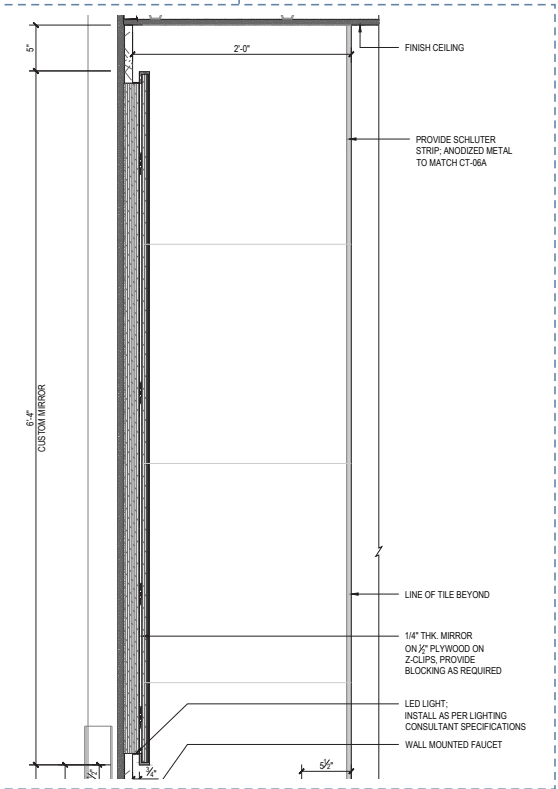
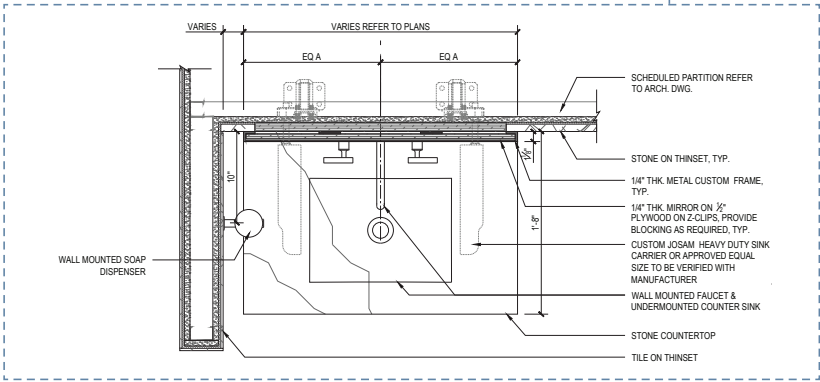
LOCKER ROOM & UNISEX RESTROOM

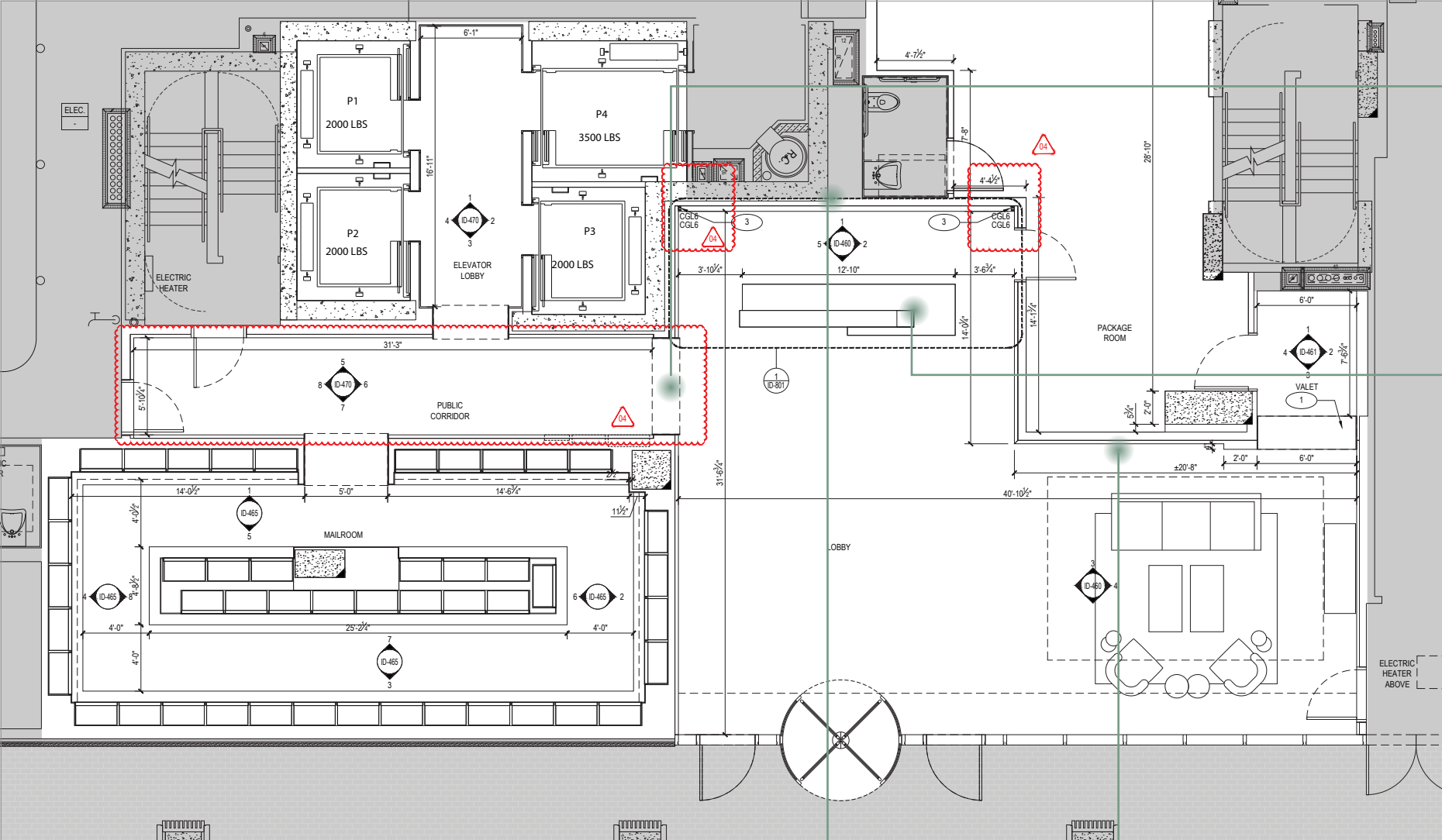


Custom Mirror with LED Lighting Details



Fabrication Process



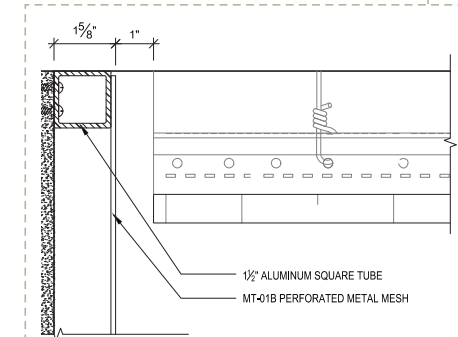
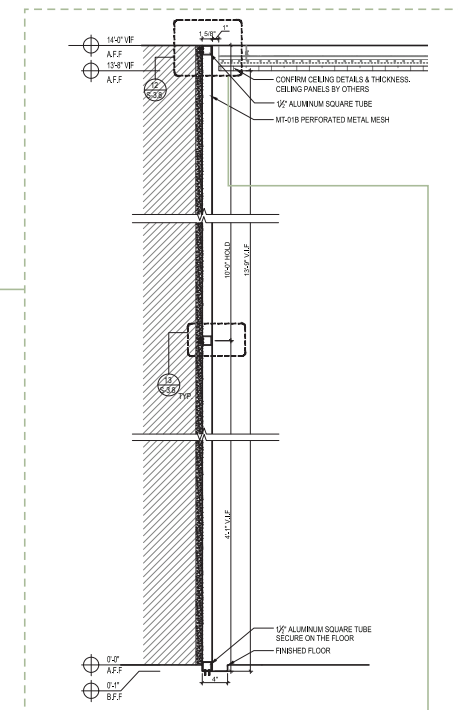
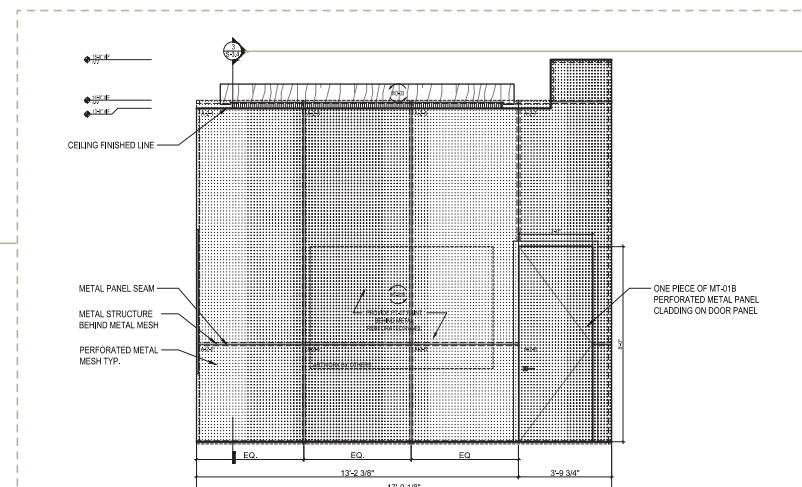
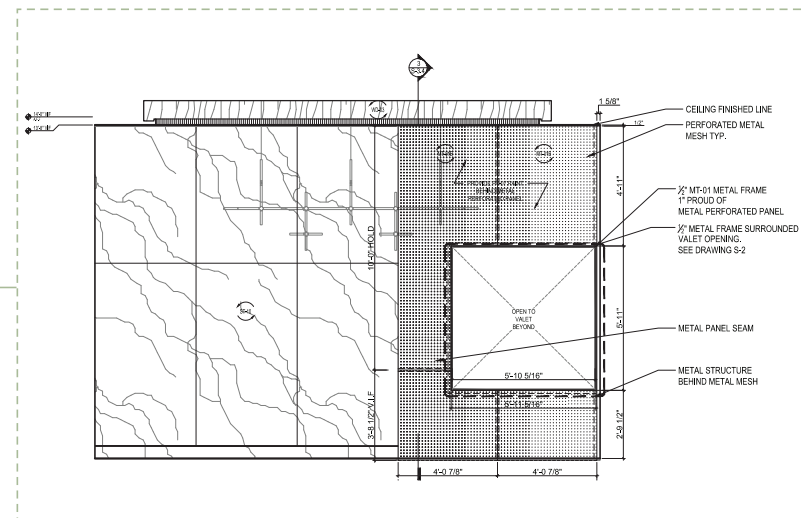
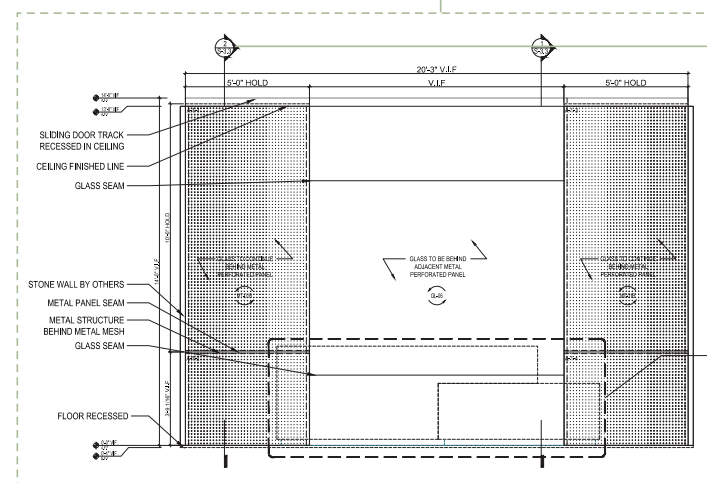
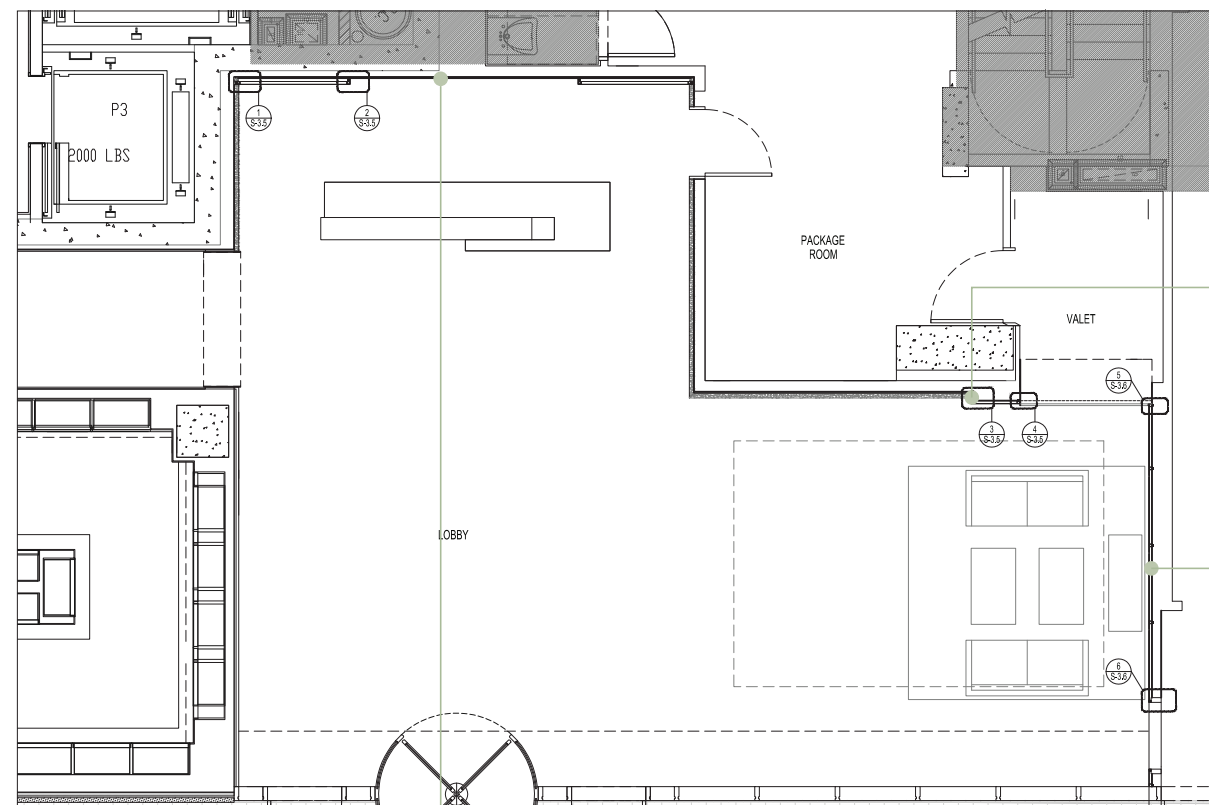


Metal Portal
Reception Desk

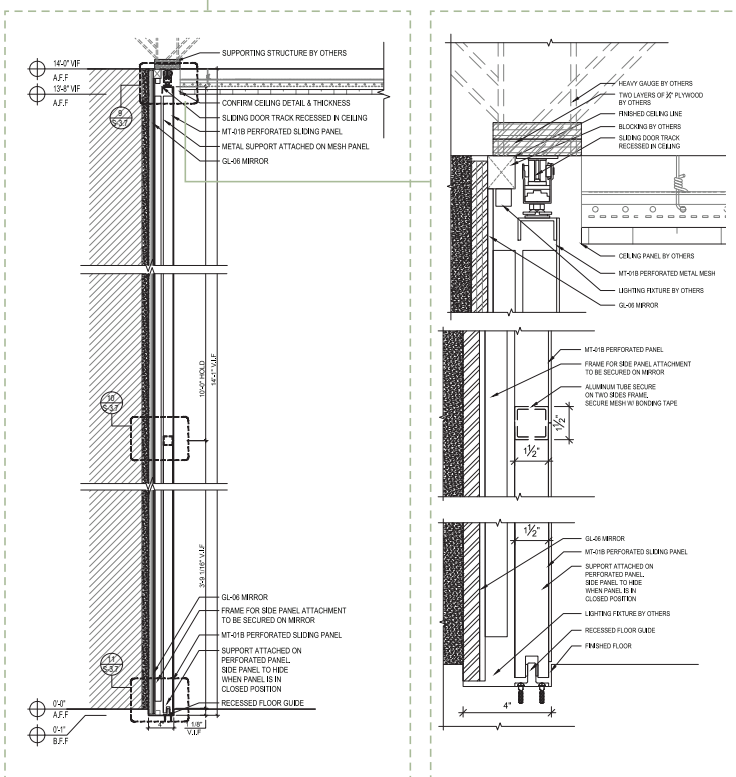


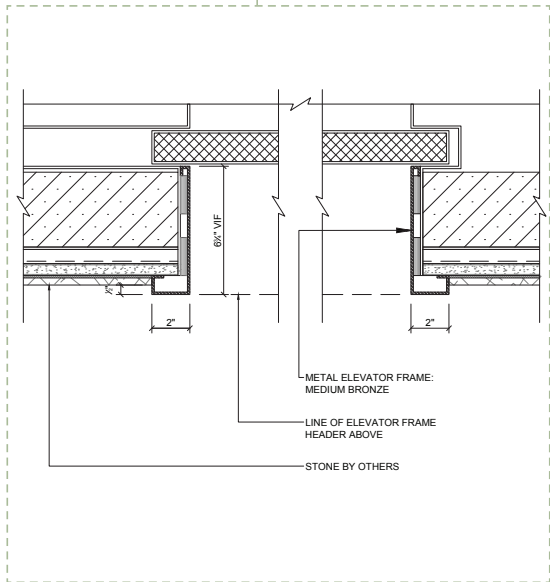
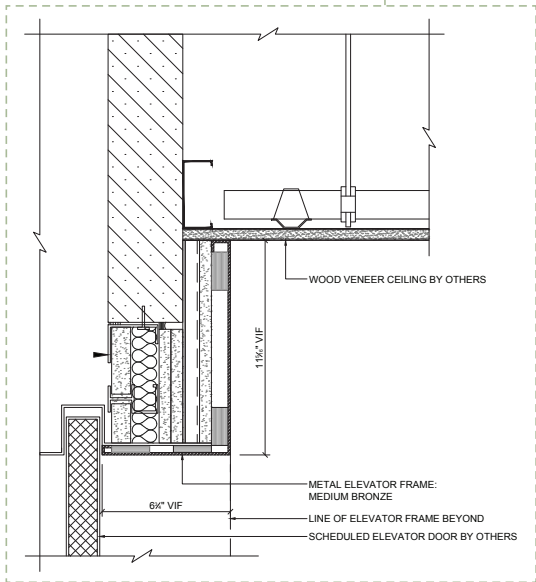
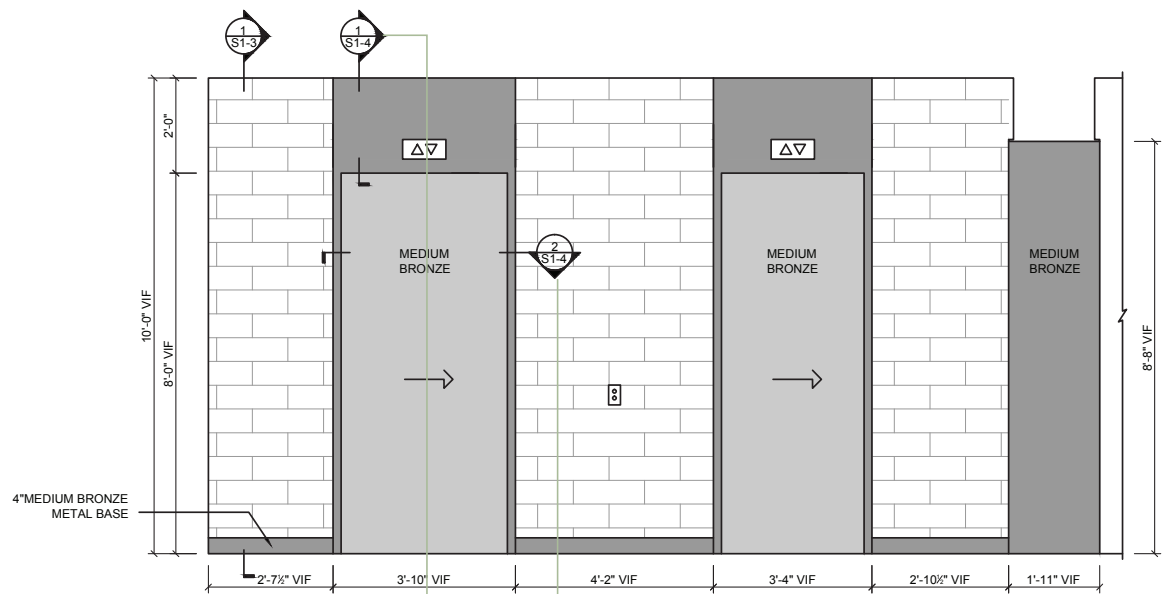
Reception
Decorative Wall

RECEPTION WALL

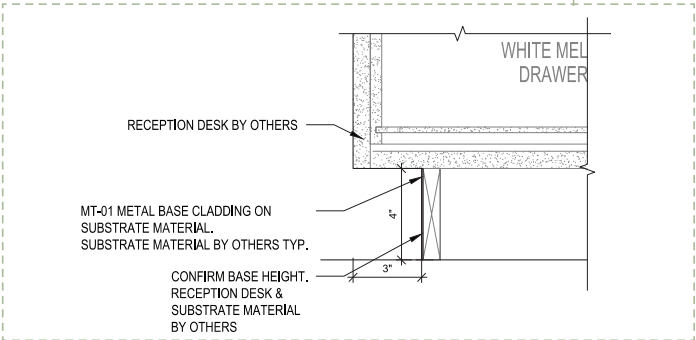
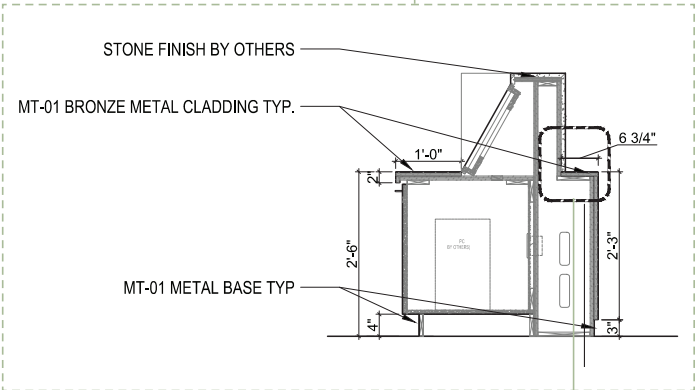
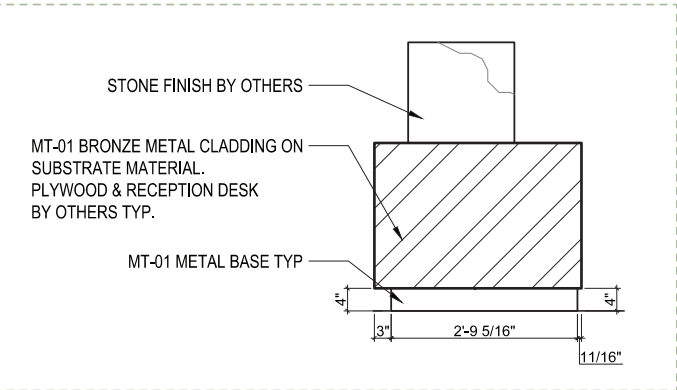
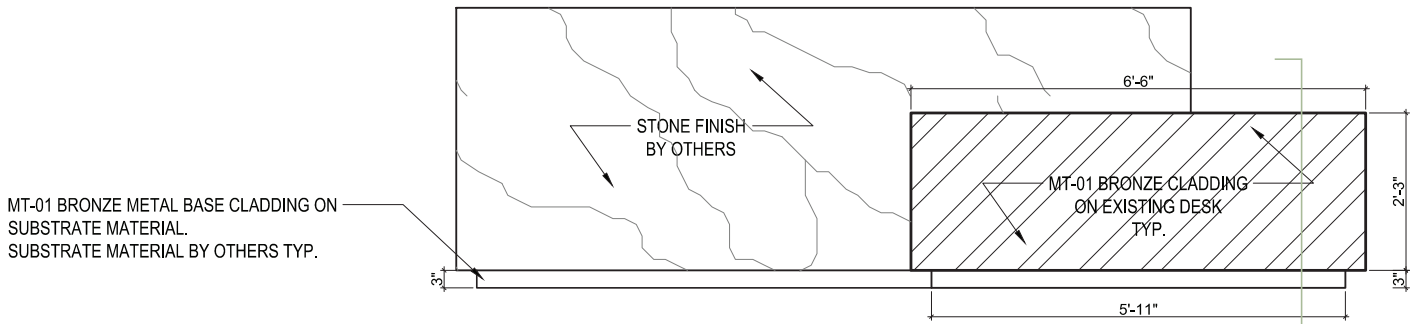


Metal & Glass Reception Wall Details





Metal Portal & Details
Around Elevator



Reception Metal Cladding &
Details

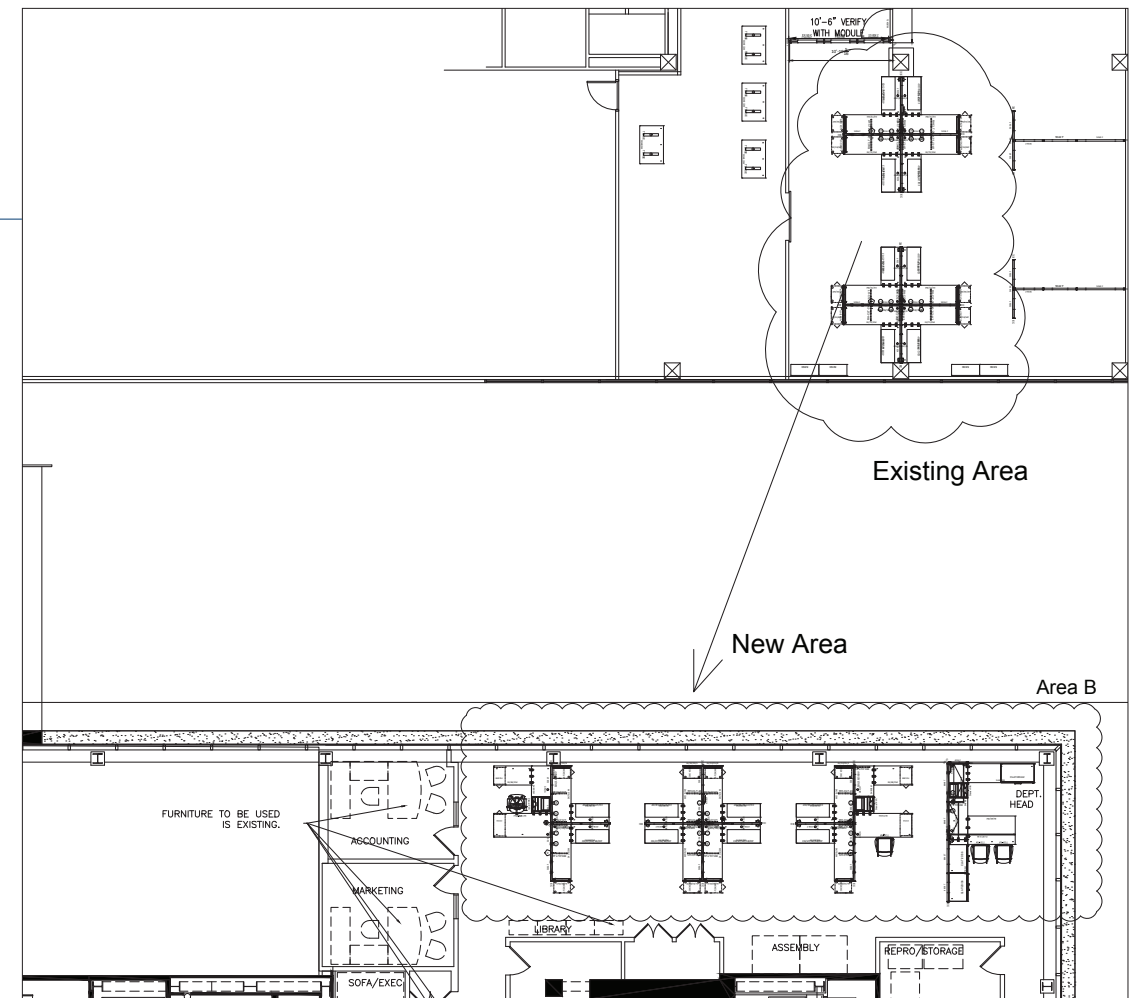
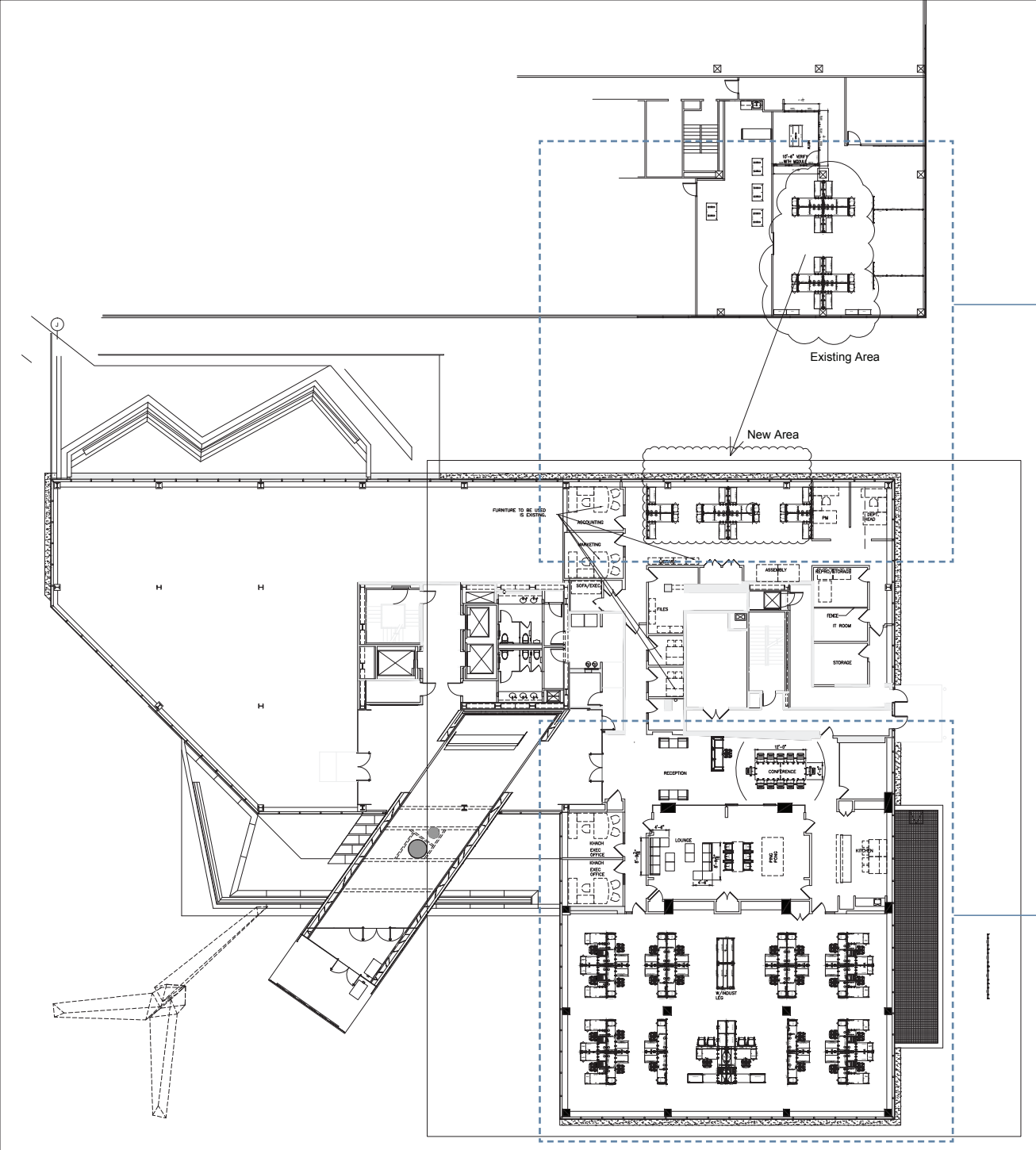


KEA

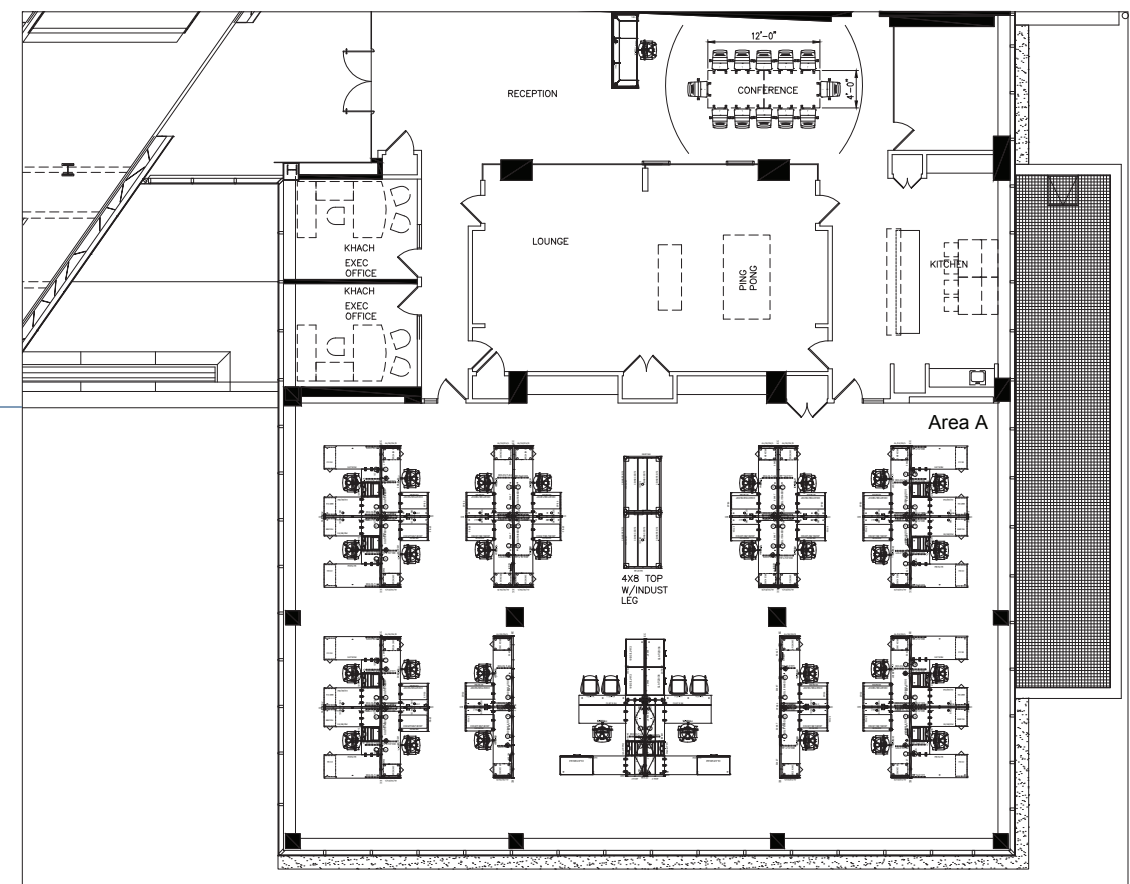
ISELIN, NJ 08830
Corporate Office
Completed 2018
Owner: KEA Engineers
Architect/Designer: Erika Tufaro



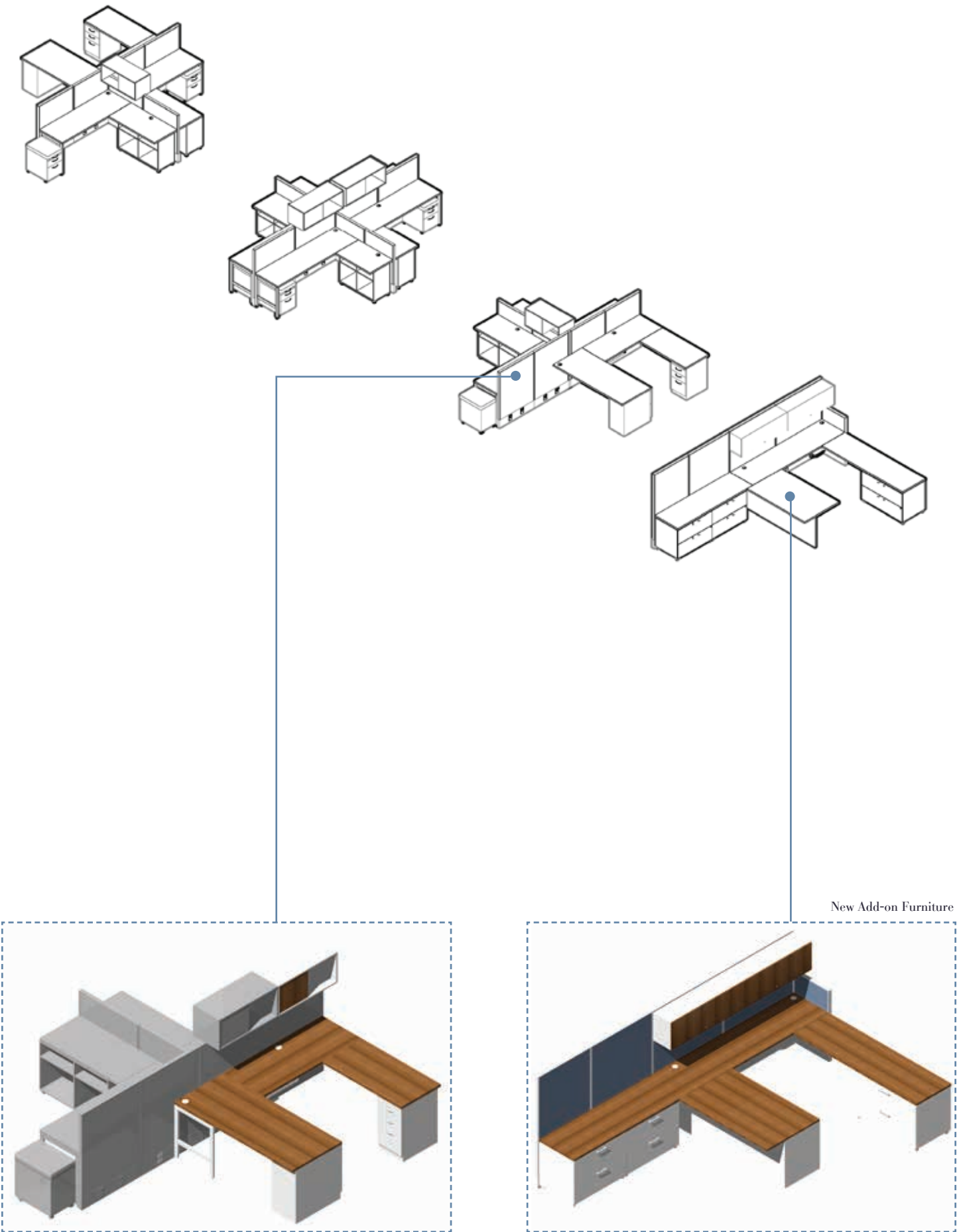
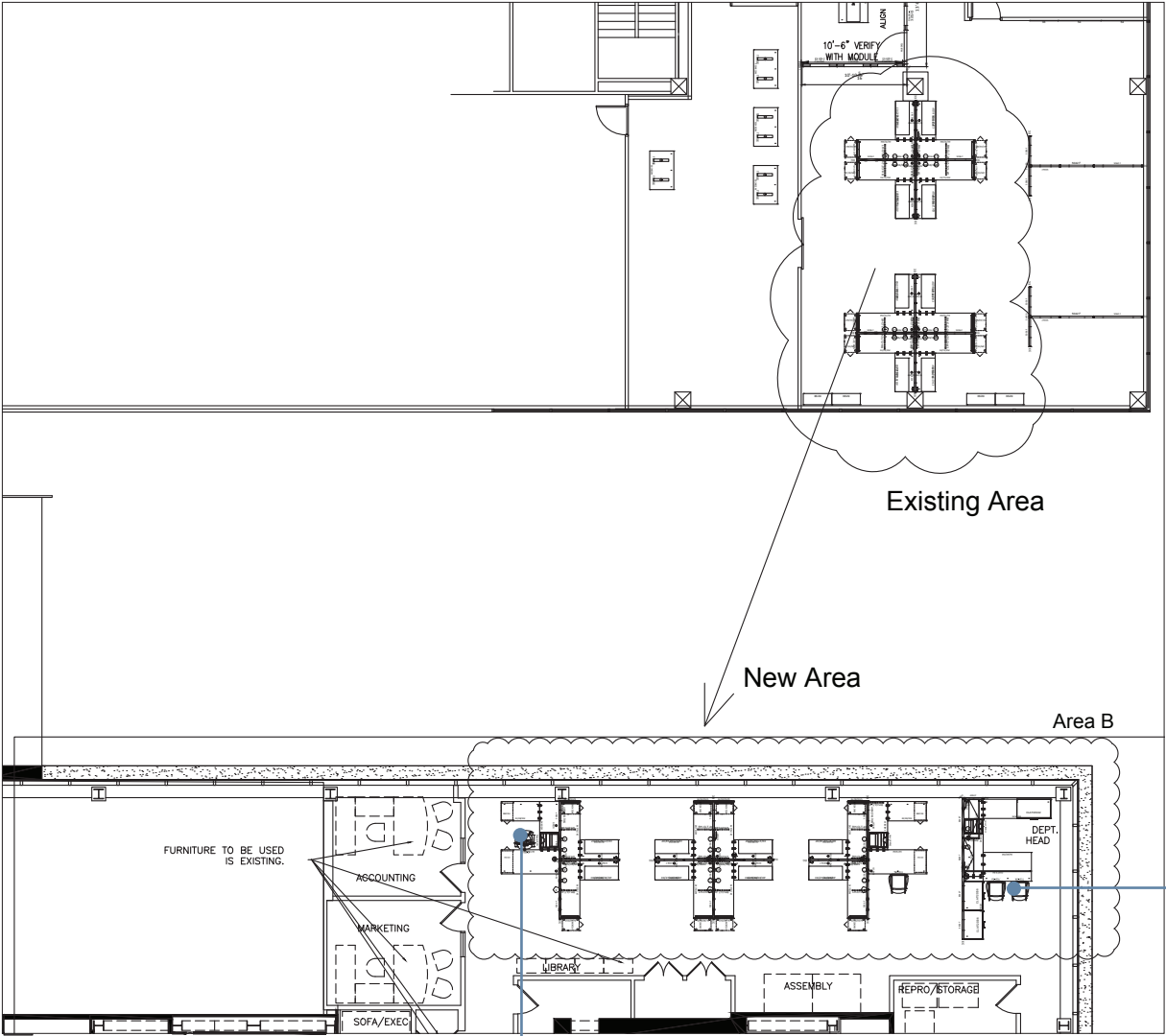
Assisted Project Manager on office furniture selection and office furniture layout
Assisted Project manager to oversee installation teams' performance and quality to ensure material procurement and on-site delivery deadline were met.
Prepared and reviewed project documentation including quote, change order, layout, etc.
Cooperated and communicated with Architect to finish final design. (Utilized 3D/2D tools)

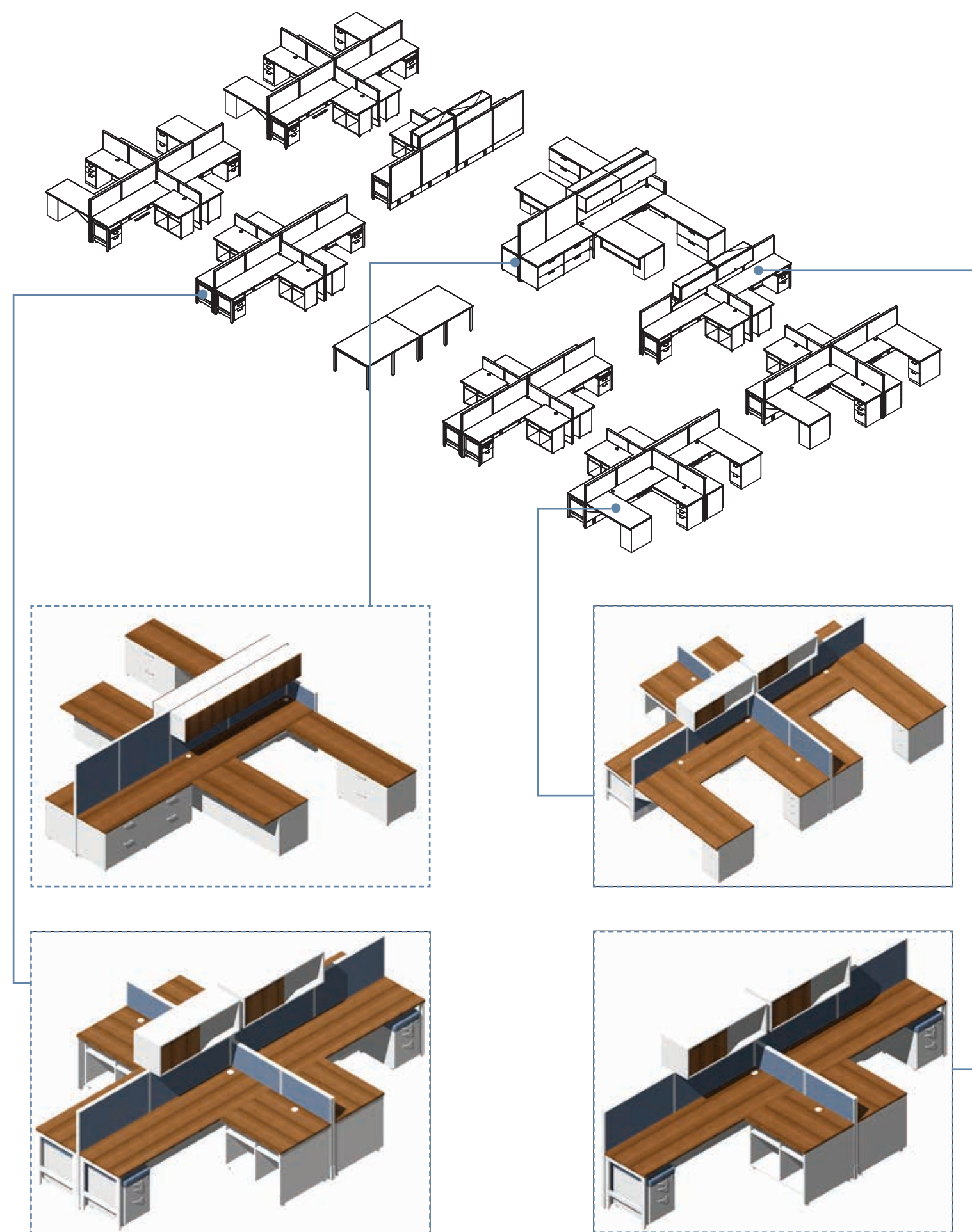
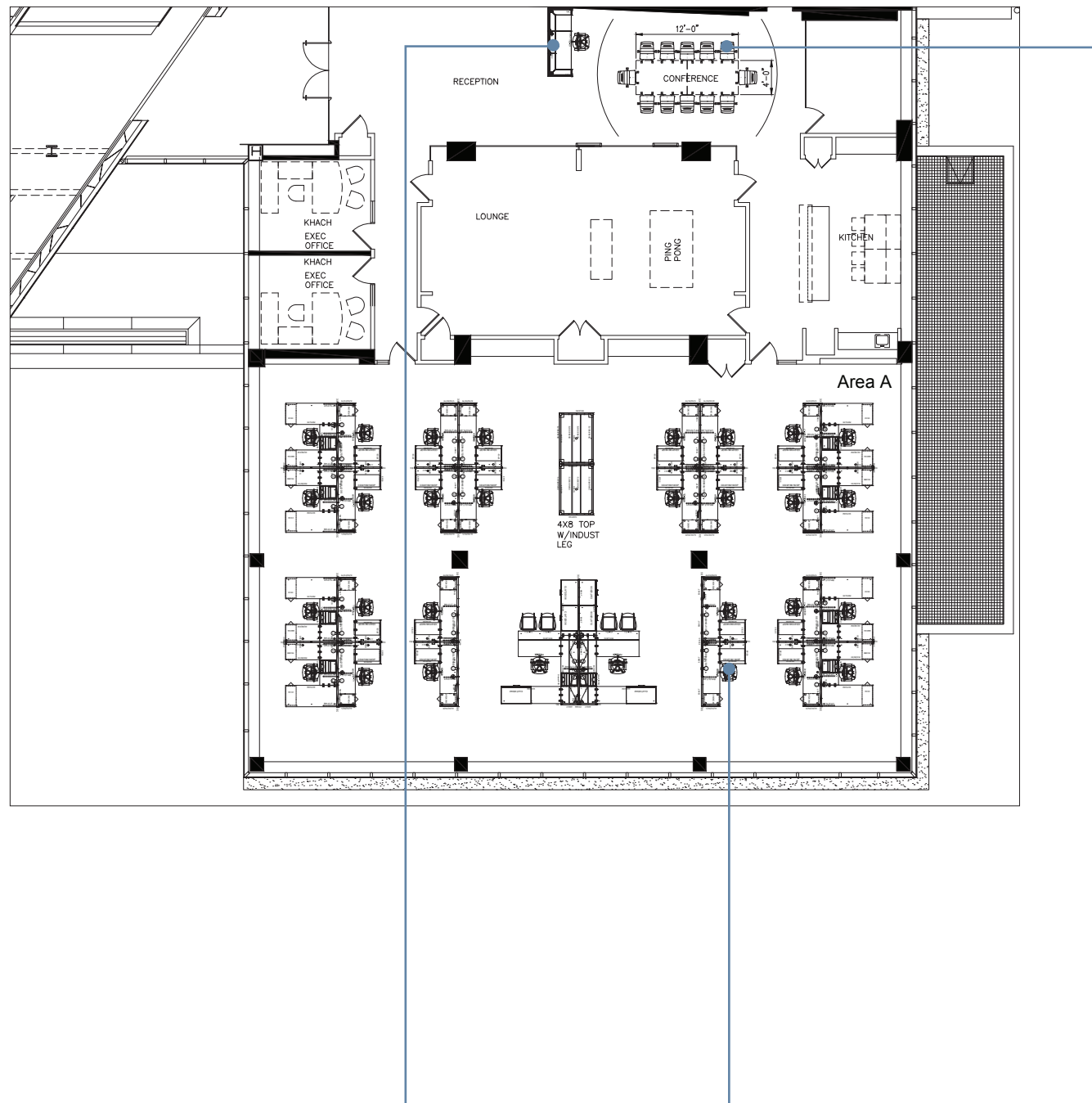


Reused & Reinstalled
Existing Furniture in
New Office

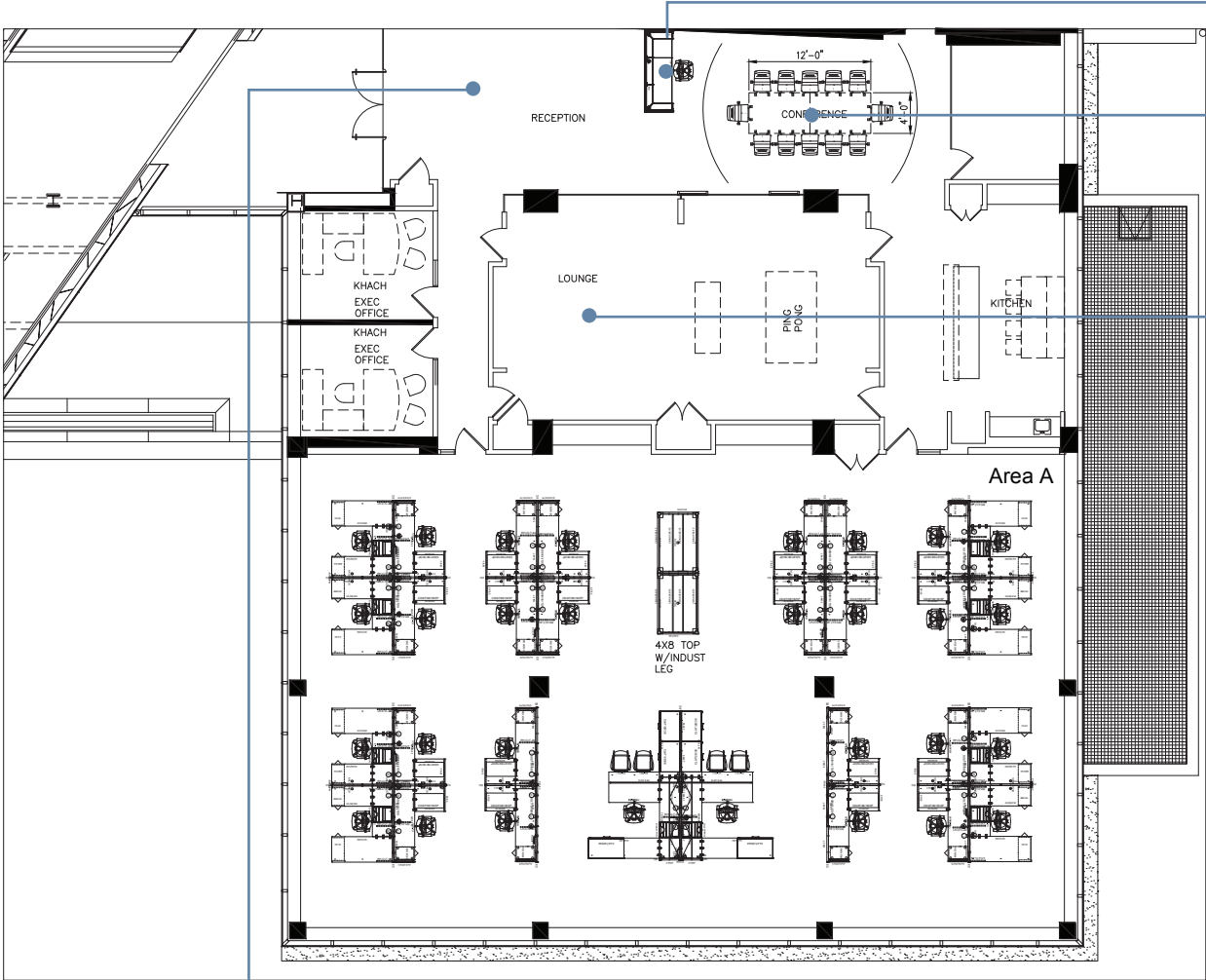


Proposed New Layout &
Furniture





OTHER FURNITURE PROPOSALS



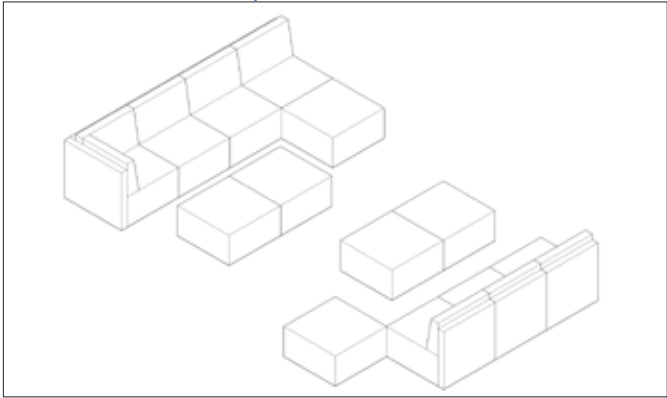
Reception Desk



Meeting Room



Reception Area

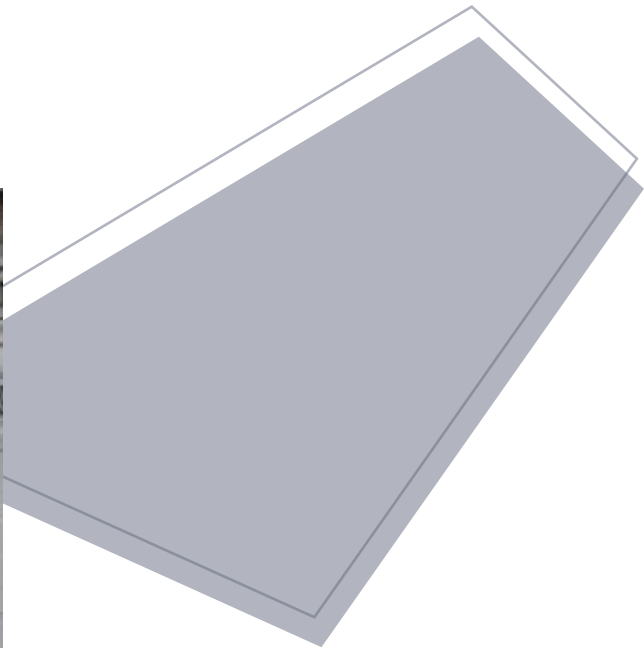


Lounge High Table & Stools

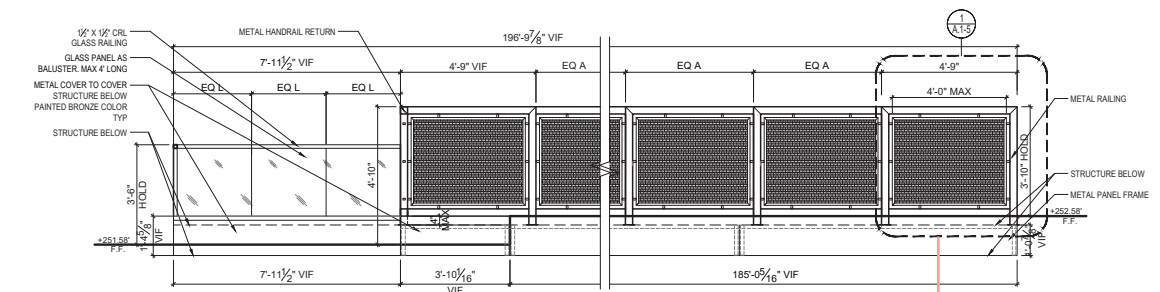
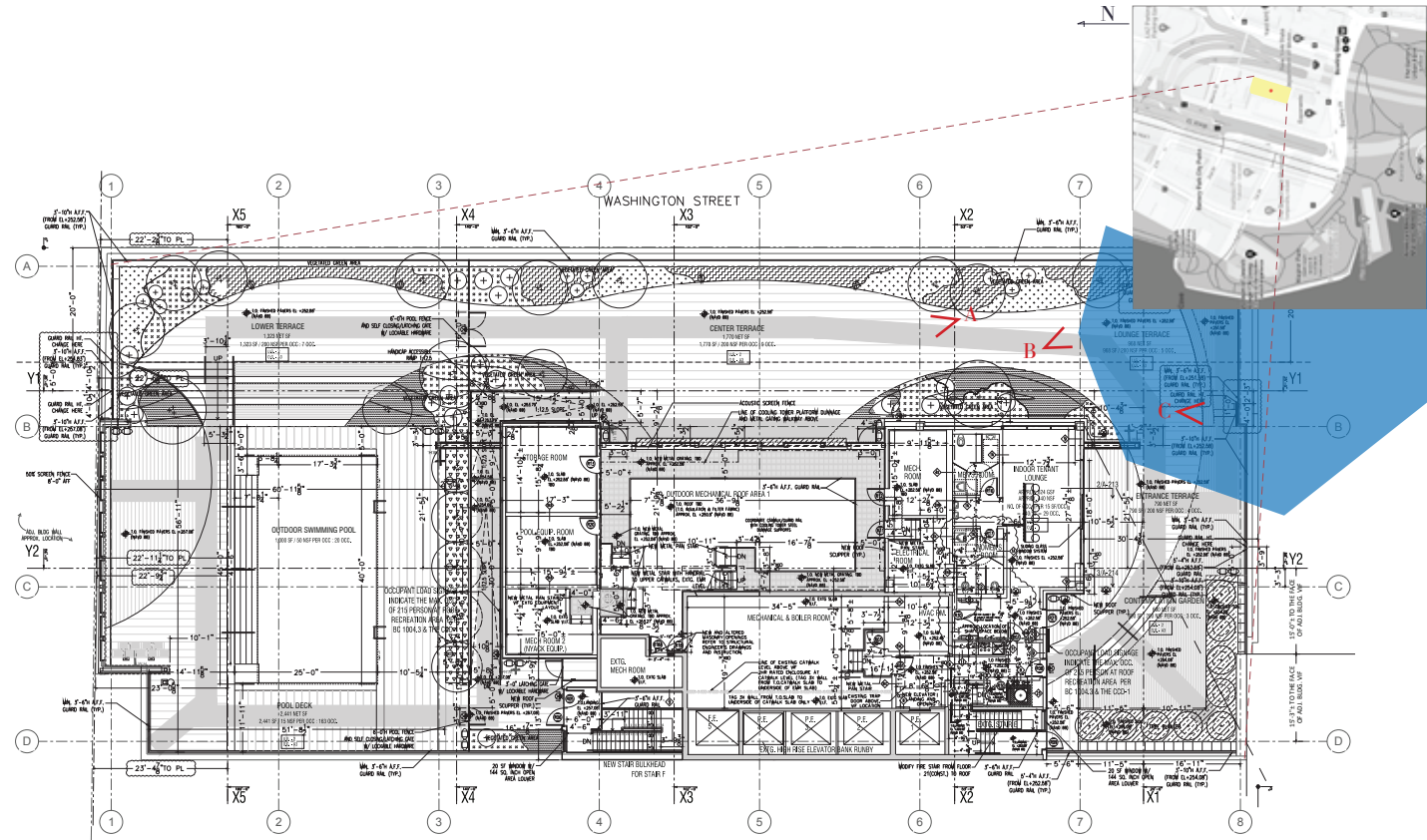


TWO WASHINGTON

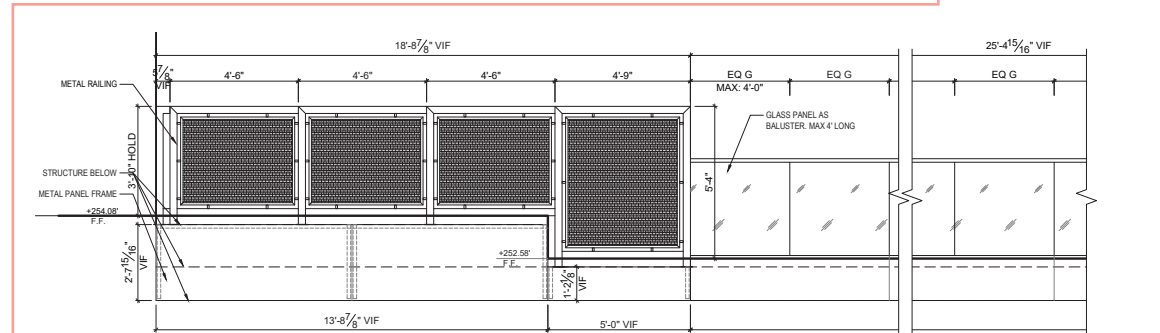
NEW YORK, NY 10004
Luxury Apartment / Long term lease hotel
Under Construction
Owner: Moinian Group
Architect/Designer: AKM Architects/CetraRuddy Architects



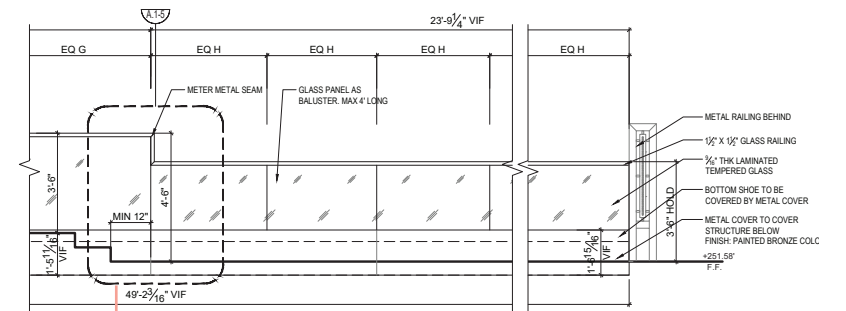
Scope includes glass works throughout whole amenity area and railing at roof top.
Prepared and reviewed all project documentation including quote, change order, schedule, shop drawings, etc.
Cooperated and communicated with manufactures, fabricators and engineer to design and finish final products. (Utilized 2D tools and hand sketches)
Assisted Company partner to oversee project teams’ performance and quality to ensure material procurement and on-site delivery deadline were met.
Cooperated and communicated with CCM Construction (General Contractor) and Moinian Group (Ownership) to finish installation and final design.
Materials and fabrication methods research.



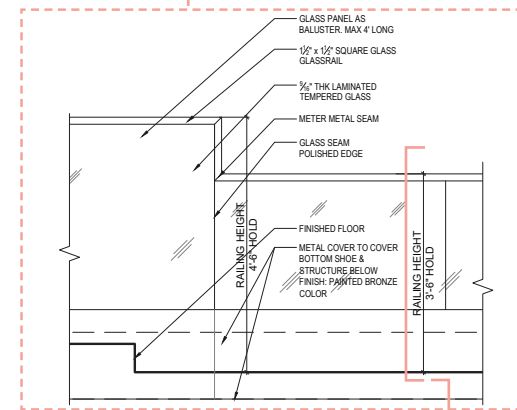
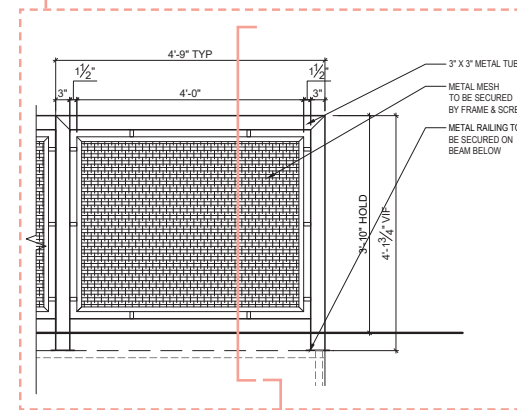
East Side Elevation



South Side Elevation

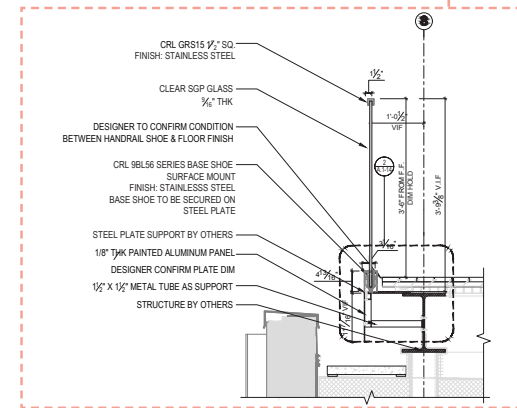
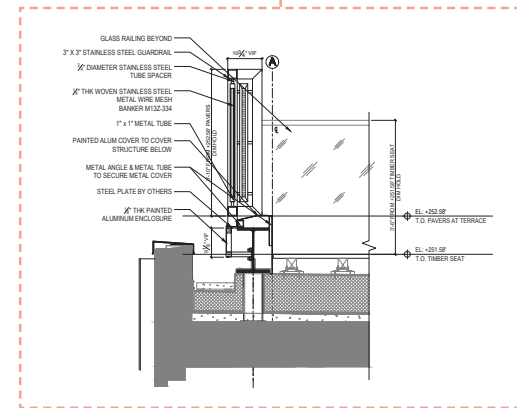


Expand possibility to preserve river view.



Metal Mesh

Glass Railing Shoe



GLASS INSTALLATION IN AMENITY AREAS



Color Glass on
3rd Floor Laundry Room



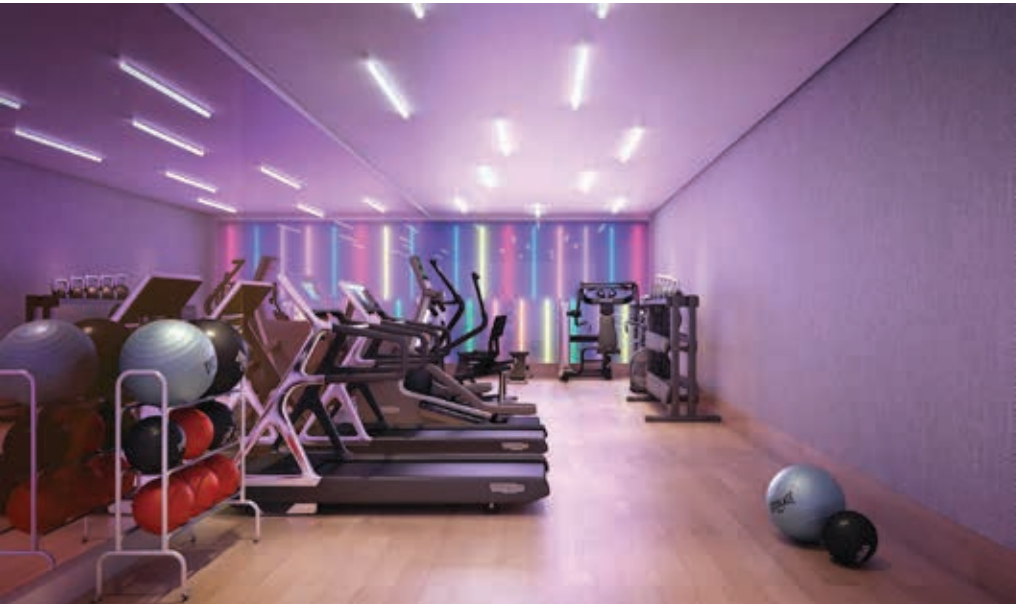
Blue Glass on
4th Floor Music Room



Green Glass on
5th Floor Sports Lounge



Red Glass on
6th Floor Co-working Lounge



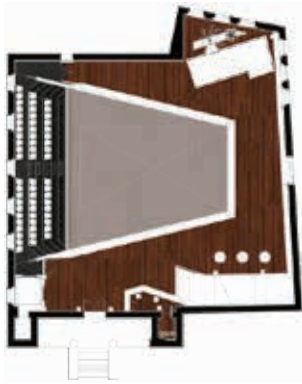
Purple Glass on
8th Floor Fitness Room



Brown Glass on
9th Floor Lounge



Basement



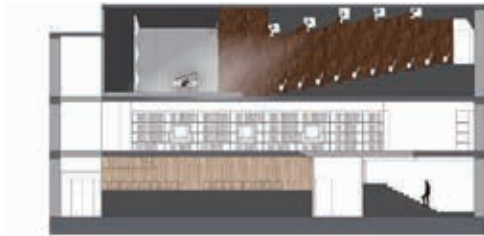
First Floor



Second Floor



Floor Finished Plan



Section Finished Plan



Rendering view from the South Storefront

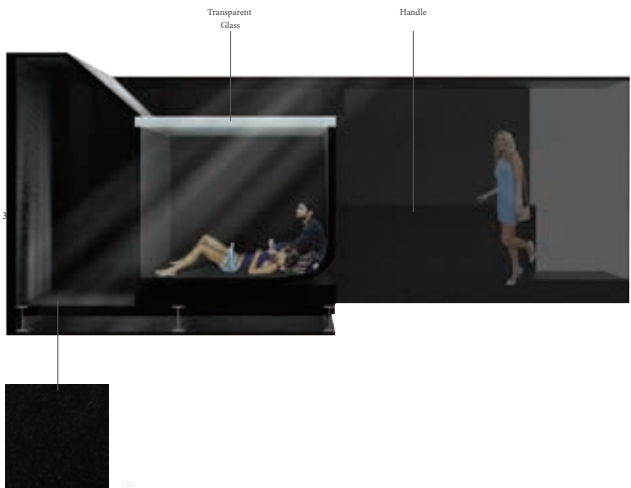
Rendering view from the East Storefront



**MORE
THAN WORDS**



Transparent Glass
Frosted Glass
Frosted Glass
Transparent Glass
Drywall



Transparent Glass
Handle



Tile



