

The background of the entire page is filled with a dense, light gray pattern of architectural sketches and drawings. These include various building elevations, floor plans, sections, and details, rendered in a clean, minimalist style. The sketches are scattered across the page, creating a textured, intellectual backdrop for the text.

# MICHAEL LOCO NTE

Portfolio of Work

The background of the entire page is a dense, light gray collage of various architectural drawings and 3D models. These include floor plans, elevations, sections, and isometric views of buildings, bridges, and urban structures. The drawings are scattered across the page, creating a textured, professional backdrop for the text.

# MICHAEL TOCOT NTF

Portfolio of Work

# TABLE OF CONTENTS

Fitness Center, Paris, <i>House of Jealous Lovers</i> .....	4
Professional Work, <i>W/M Architects, TVK</i> .....	14
Mixed Use Building, Houston, <i>Free Form</i> .....	28
Urban Development, Lima, <i>Cliff Face</i> .....	36
Profile and CV .....	44

# HOUSE OF JEALOUS LOVERS

**Location:** Paris, France

**Site:** Hôpital Saint-Vincent-de-Paul

**Program:** Fitness Center/ School

**Area:** 108,000 sq.ft / 10,000m<sup>2</sup>

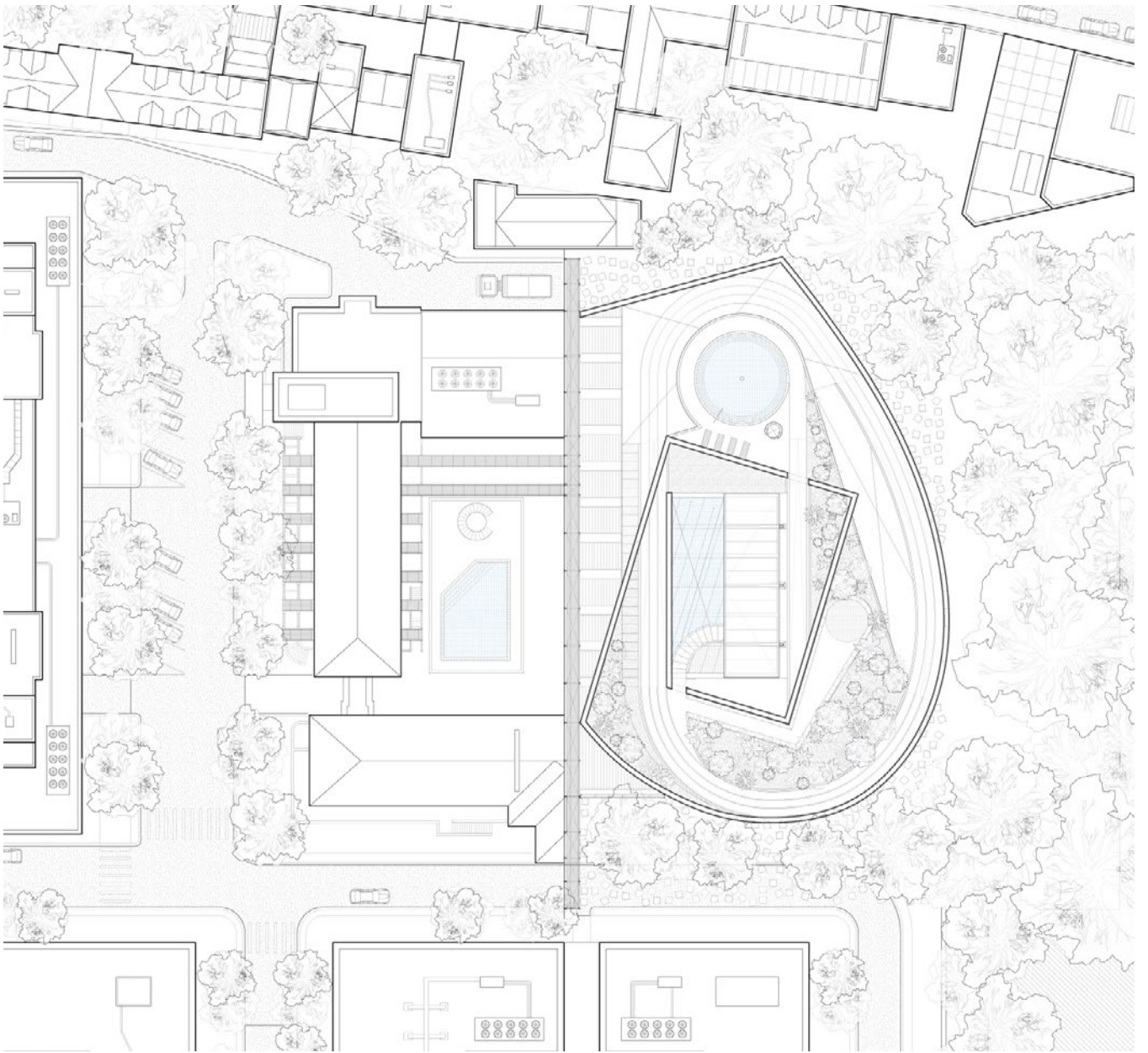
**Task:** Develop a totalized building considering all necessary life-safety, egress, material and structural considerations, using natural ventilation strategies as a primary design device.

With *House of Jealous Lovers*, the “body” is at the root of all design decisions, across all scales. Through the strategic sequence of environments and spaces—the body moves through different moments of body/subject reconciliation and estrangement—leaving the subject not questioning the architecture for its meaning or reasons, but instead himself.

The architecture focuses on these moments of reconciliation and estrangement, moving through a difficult whole in which the fragments of the building are always completely manifested. But the boundary and influence of any given one is affected by another — blurring inside and outside, before and after, and conflict and resolution.

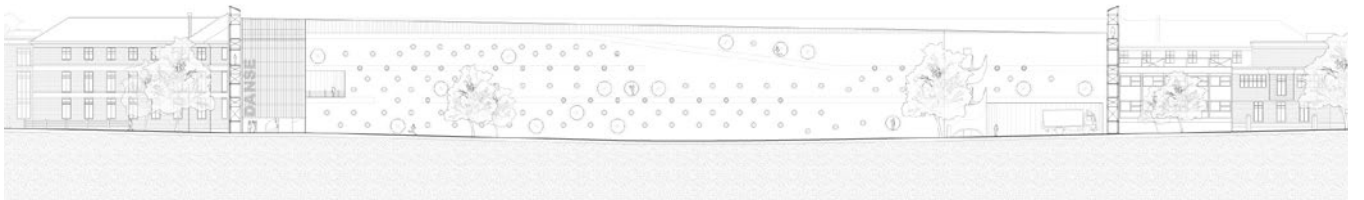




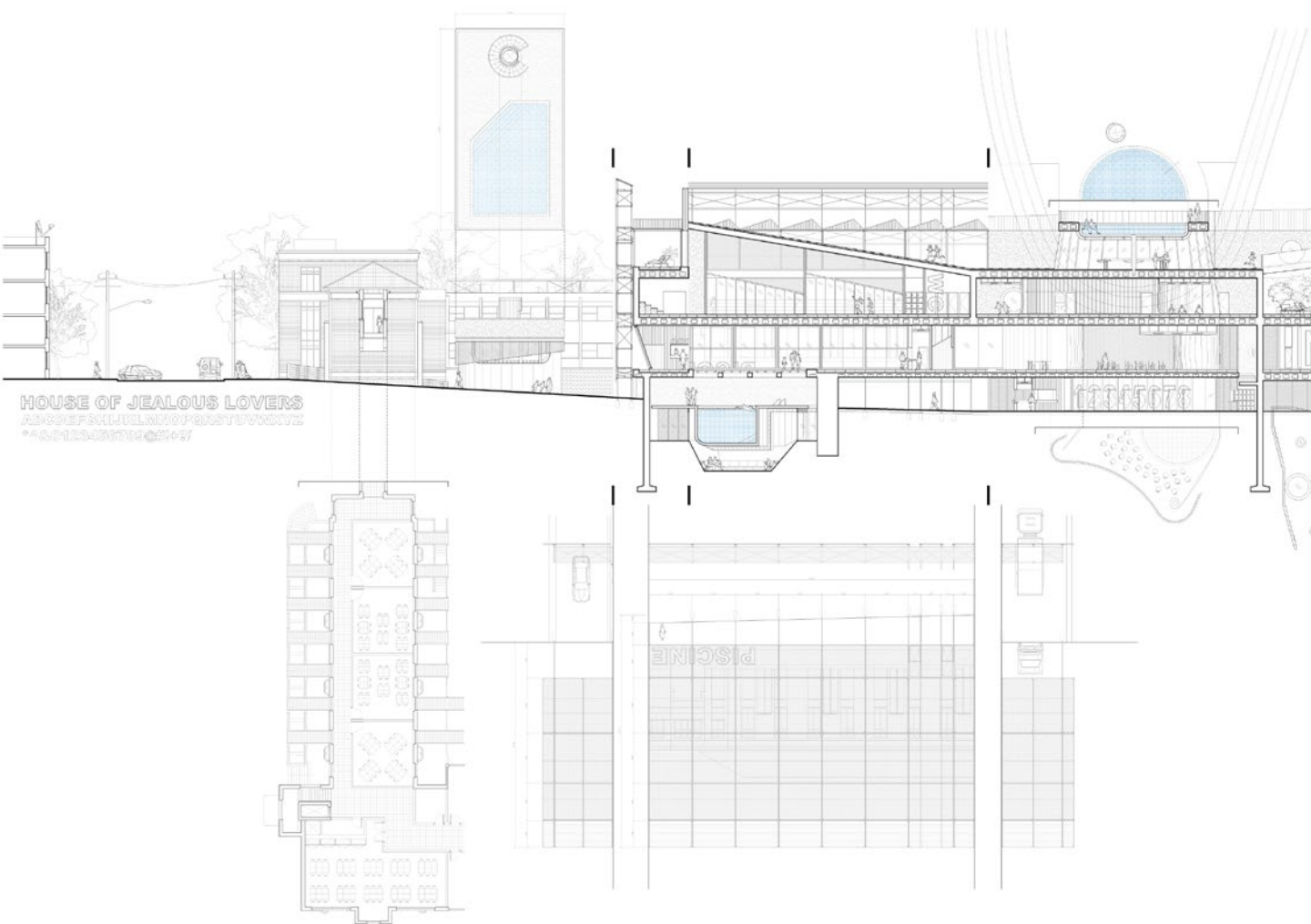


SITE ROOF PLAN

UNROLLED ELEVATION



# UNROLLED MASTER SECTION



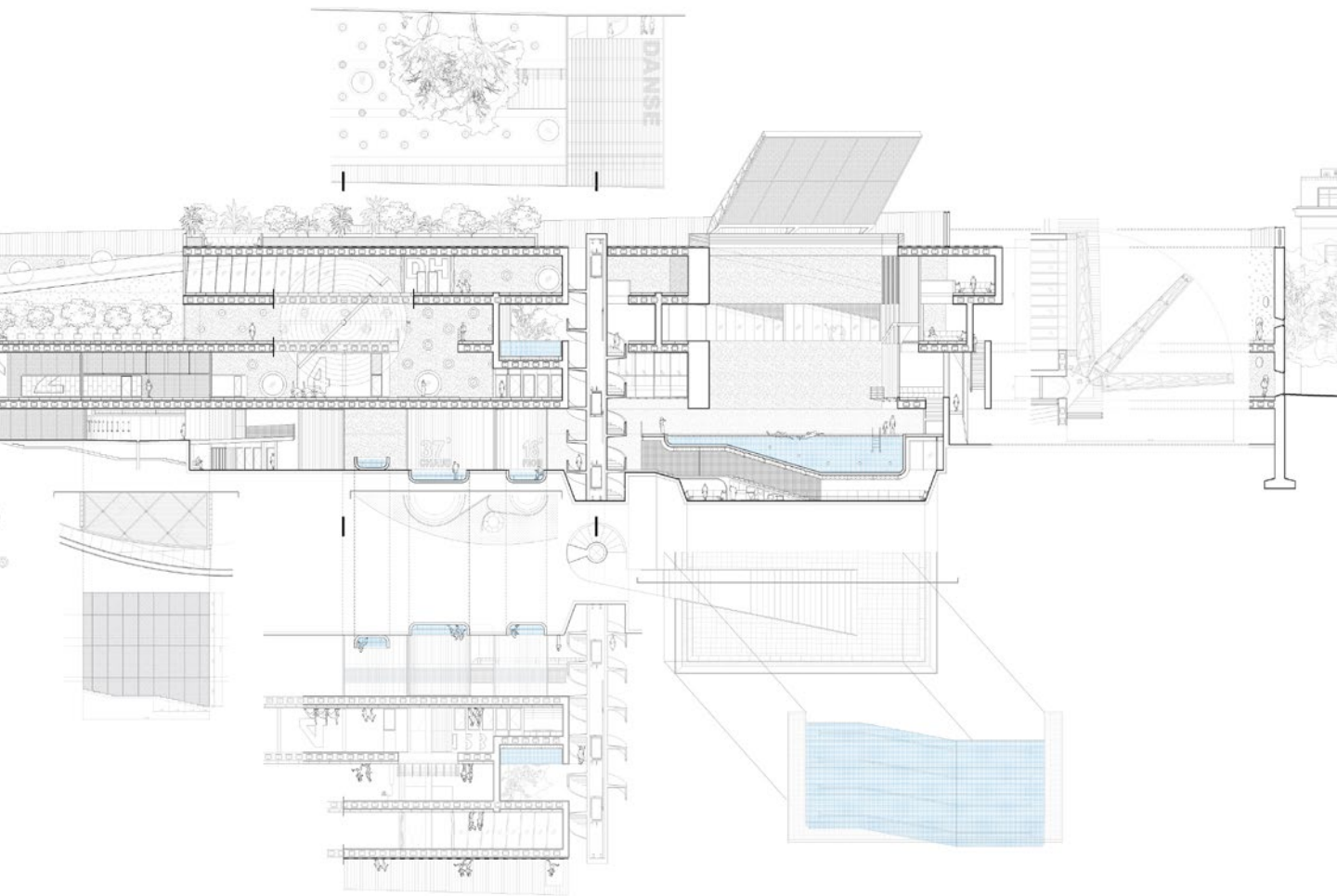
## ***Finding Time***

I seek to dismiss contemporary trends defined by ironic interventions, technological solutions for technological problems, and image simulation. These interventions focus attention towards faceless interactions and hollow representations of sociality.

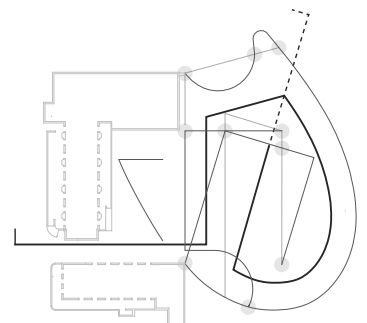
This project looks to refocus the attention of contemporary architecture on its material relationship between the subject and the body.

## ***Precarious Contextualism***

By turning the conceptual drive of architecture away from distant social or cultural theories and ideals, this work looks to forefront issues which must be played out through the primary matter of building — tectonics. The bath house is composed of formal fragments, each defined by one of three tensioned relationships — *Body/ Context, Body/Structure, and Body/Body.*



Unrolled Master Section Key

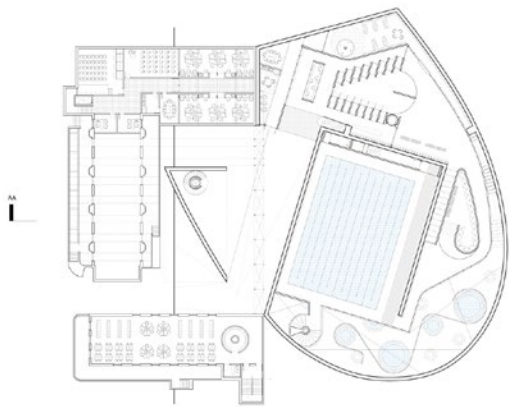




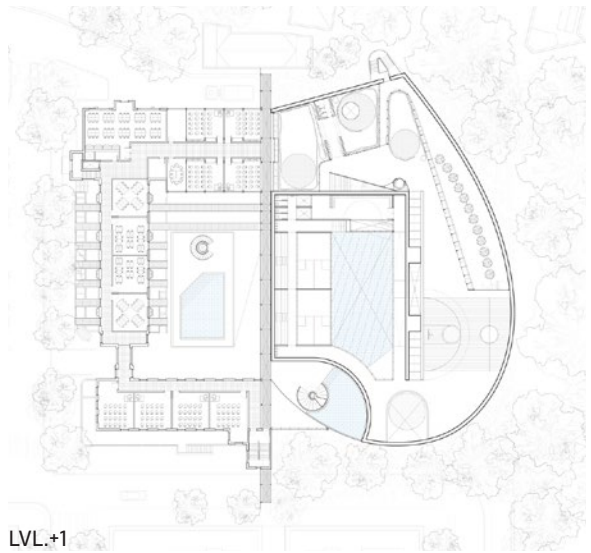


### **Body Movement**

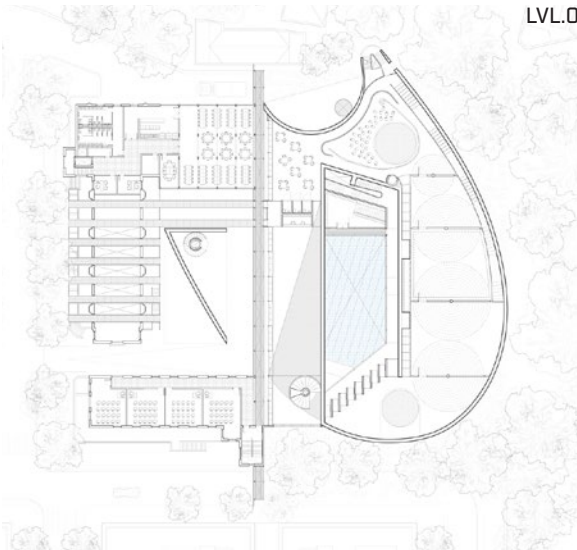
The primary move of splitting the existing building in half, and demolishing the northern side for the bath house, de-stabilizes the symmetry of the project. In the existing structure, a school inhabits the former 1930's hospital. The Pool House is accessed from two major points, one formal and one informal. From here the circulation paths begin to separate away from one another based on the three program trajectories - *Pool, Dance, and Fitness*



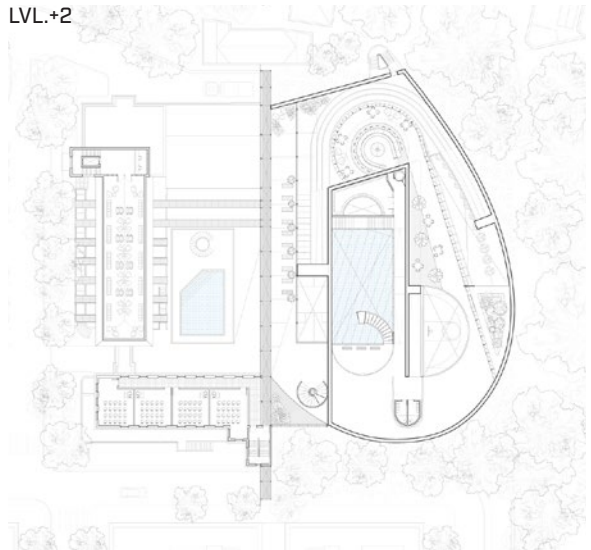
LVL.-1



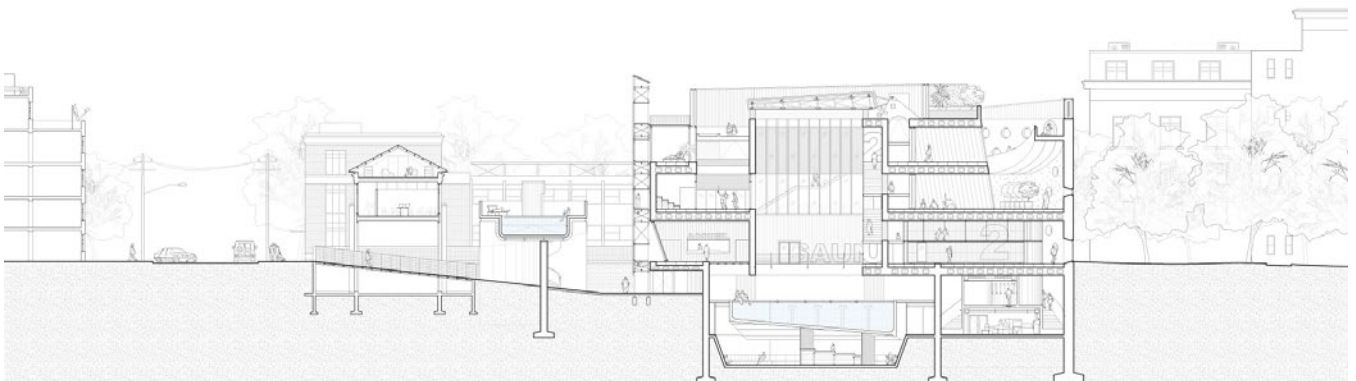
LVL.+1



LVL.0



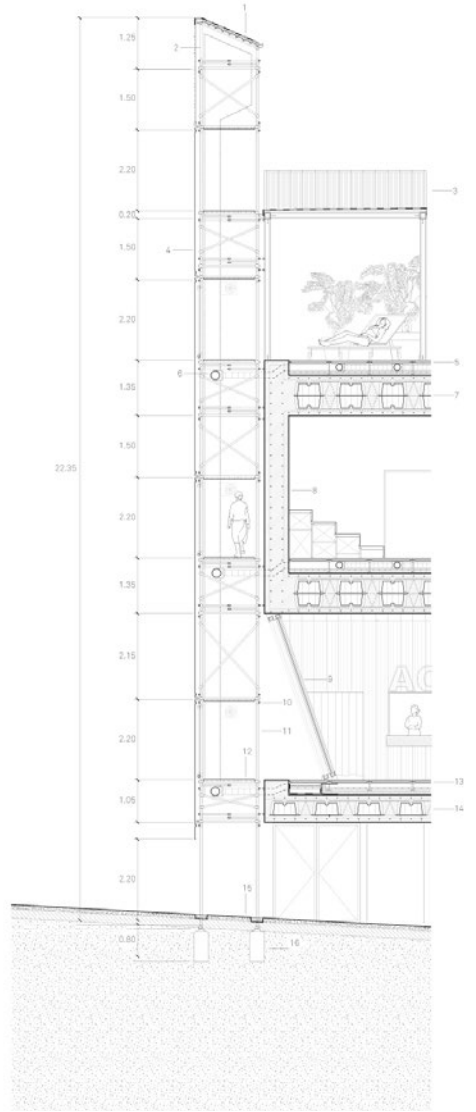
LVL.+2



TRANSVERSE SECTION AA



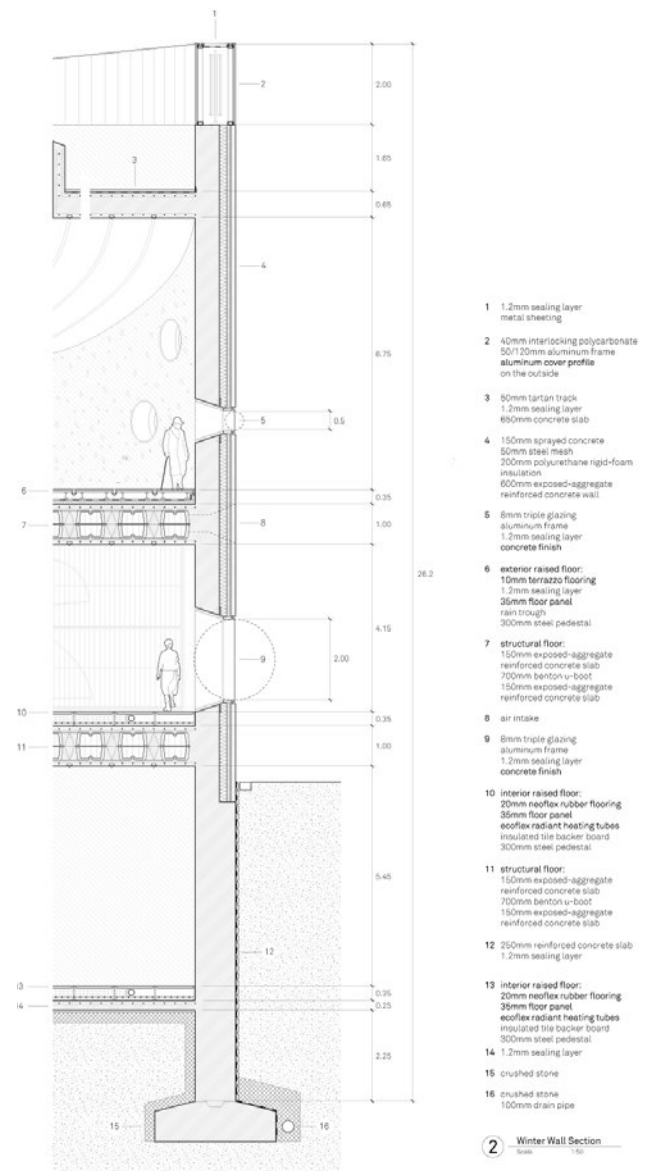
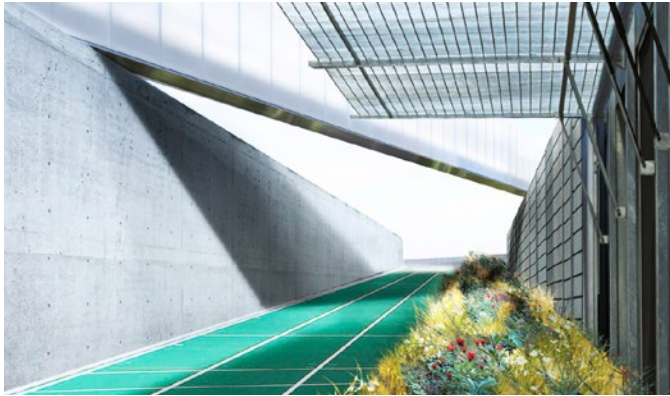
- 1 1.2mm sealing layer  
corrugated metal sheeting
  - 2 50cm round external air diffuser  
and damper
  - 3 40cm polycarbonate panel roof
  - 4 exterior facade treatment:  
20mm 30% tint mirror glass panel  
4-way spider fitting with fin holder  
fitted to steel tube frame  
vertical jointed support
  - 5 interior raised floor:  
20mm neoflex rubber flooring  
25mm floor panel  
ecoflex radiant heating tubes  
insulated tile backer board  
300mm steel pedestal
  - 6 75cm galvanized steel  
air diffusing pipe w/ interior  
aluminum tubing
  - 7 structural floor:  
150mm exposed-aggregate  
reinforced concrete slab  
700mm benton u-boot  
150mm exposed-aggregate  
reinforced concrete slab
  - 8 600mm exposed aggregate  
reinforced concrete slab
  - 9 8mm triple glazing  
aluminum frame  
1.2mm sealing layer
  - 10 4-bolts right-angle coupler,  
tropicalized
  - 11 electro-galvanized 50mm steel  
tube
  - 12 1250mm x 2500mm  
galvanized steel grated flooring  
panel
  - 13 interior raised floor:  
20mm neoflex rubber flooring  
35mm floor panel  
ecoflex radiant heating tubes  
insulated tile backer board  
100mm rigid foam insulation  
1.2 mm sealing layer on external face
  - 14 structural floor:  
150mm exposed-aggregate  
reinforced concrete slab  
500mm benton u-boot  
150mm exposed-aggregate  
reinforced concrete slab
  - 15 100mm stabilized decomposed  
granite
  - 16 800mm reinforced  
concrete pylon
- ① — Summer Wall Section —  
Scale 1:50



SUMMER WALL DETAIL  
AERIAL MODEL VIEW  
JOGGING TRACK VIEW  
WINTER WALL DETAIL

(Left)  
(Middle Top)  
(Middle Bottom)  
(Right)

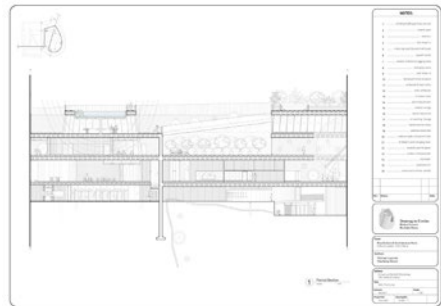
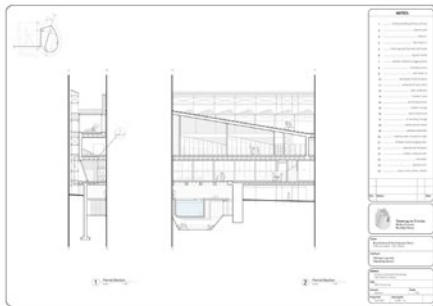
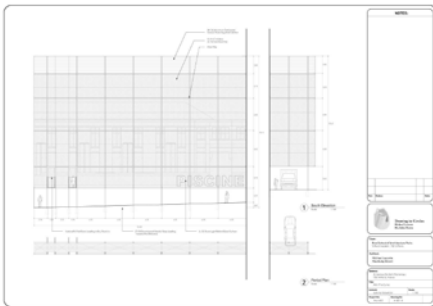
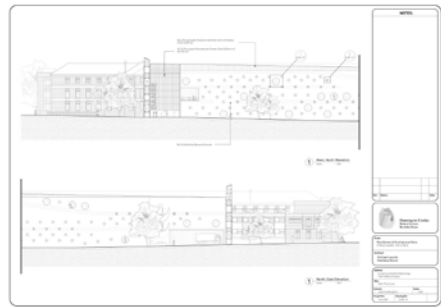
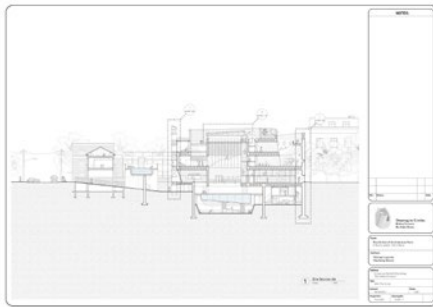
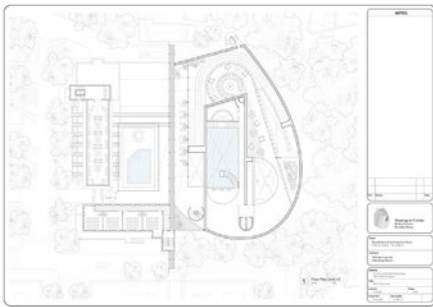
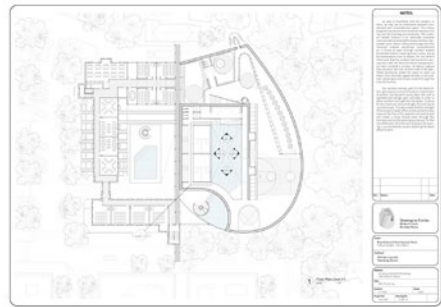
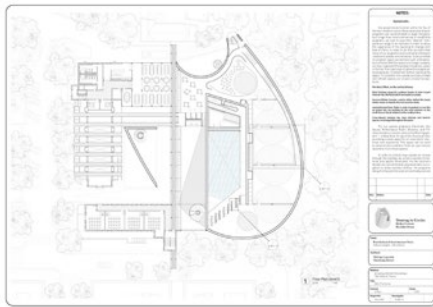
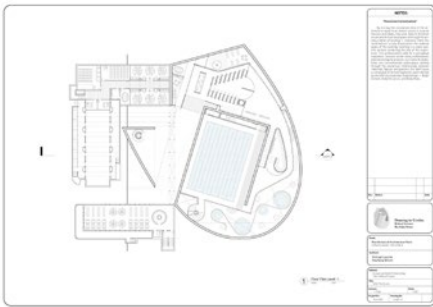
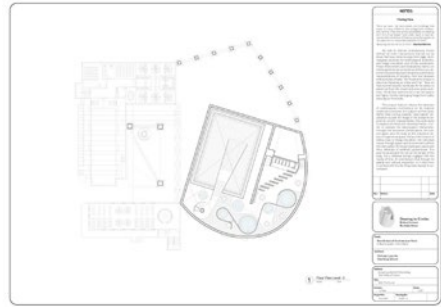


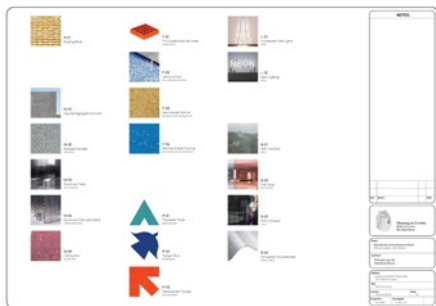
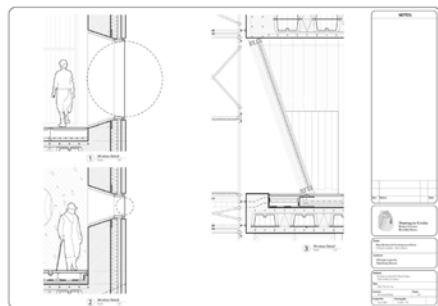
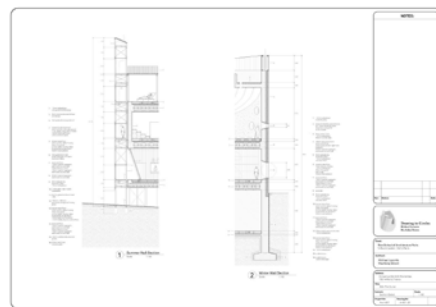
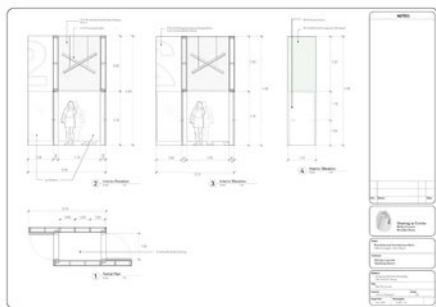
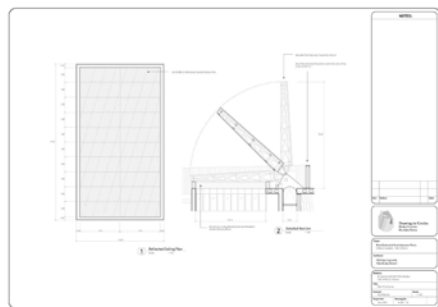
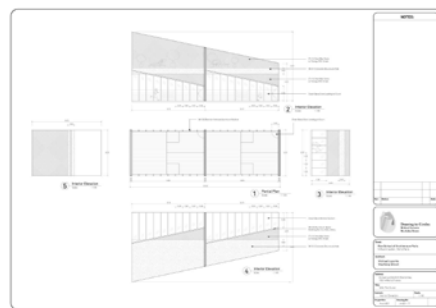
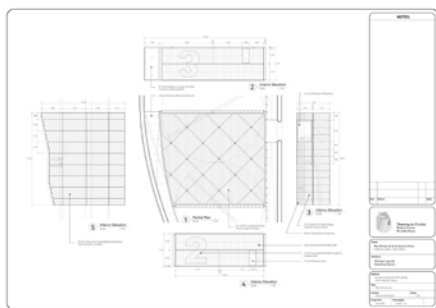
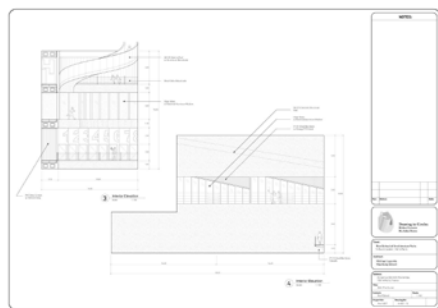
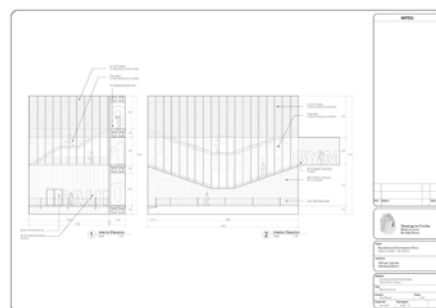
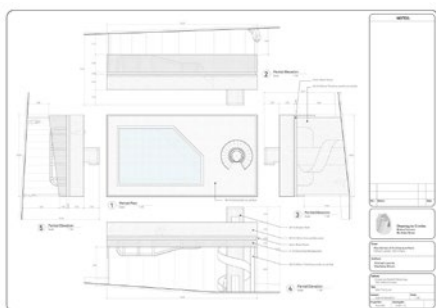
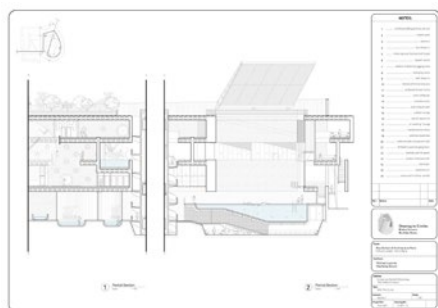


## Systems Etc.

This project looks function within the flux of Parisian weather cycles. Because pool and sport programs can accommodate a larger temperature range than most commercial or residential programs, the “desired” temperature range is pushed to an extreme in order to allow the experience of the building to change with that of Paris.

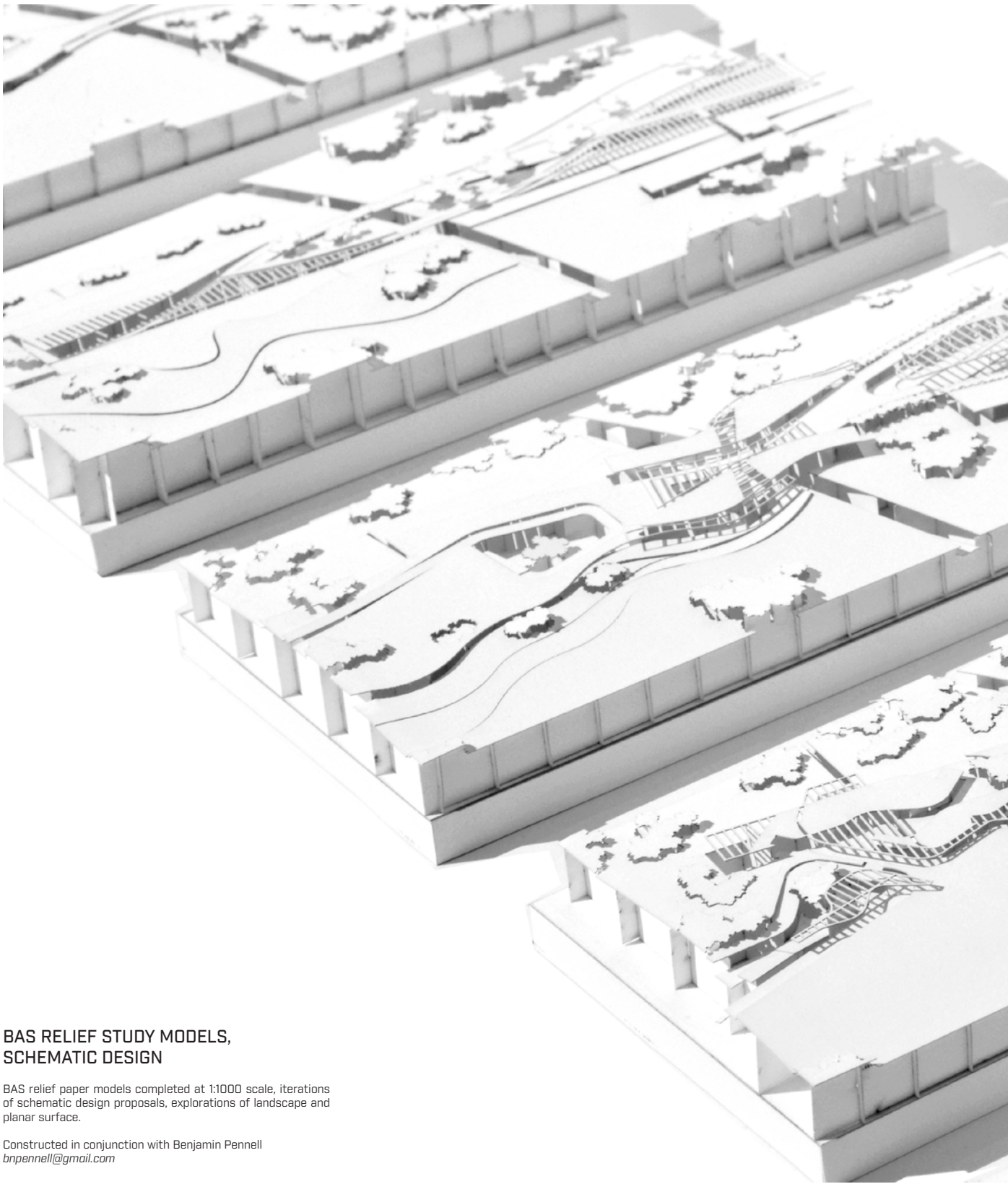
Program is layered in locations closer to or further from openings to allow the outside air to properly be “conditioned” before reaching the space. In order to control how outside air moves through the building, it utilizes a variety of material and spatial thresholds to isolate public space from the “extremes” of outdoor conditions.





The 23-page "Schematic Design" drawing set produced for *The House of Jealous Lovers*, including material call-outs, metric dimensions, and structural definitions.

Project completed in conjunction with Macaulay Brown // [macaulay1994@gmail.com](mailto:macaulay1994@gmail.com)



**BAS RELIEF STUDY MODELS,  
SCHEMATIC DESIGN**

BAS relief paper models completed at 1:1000 scale, iterations of schematic design proposals, explorations of landscape and planar surface.

Constructed in conjunction with Benjamin Pennell  
[bnpennell@gmail.com](mailto:bnpennell@gmail.com)



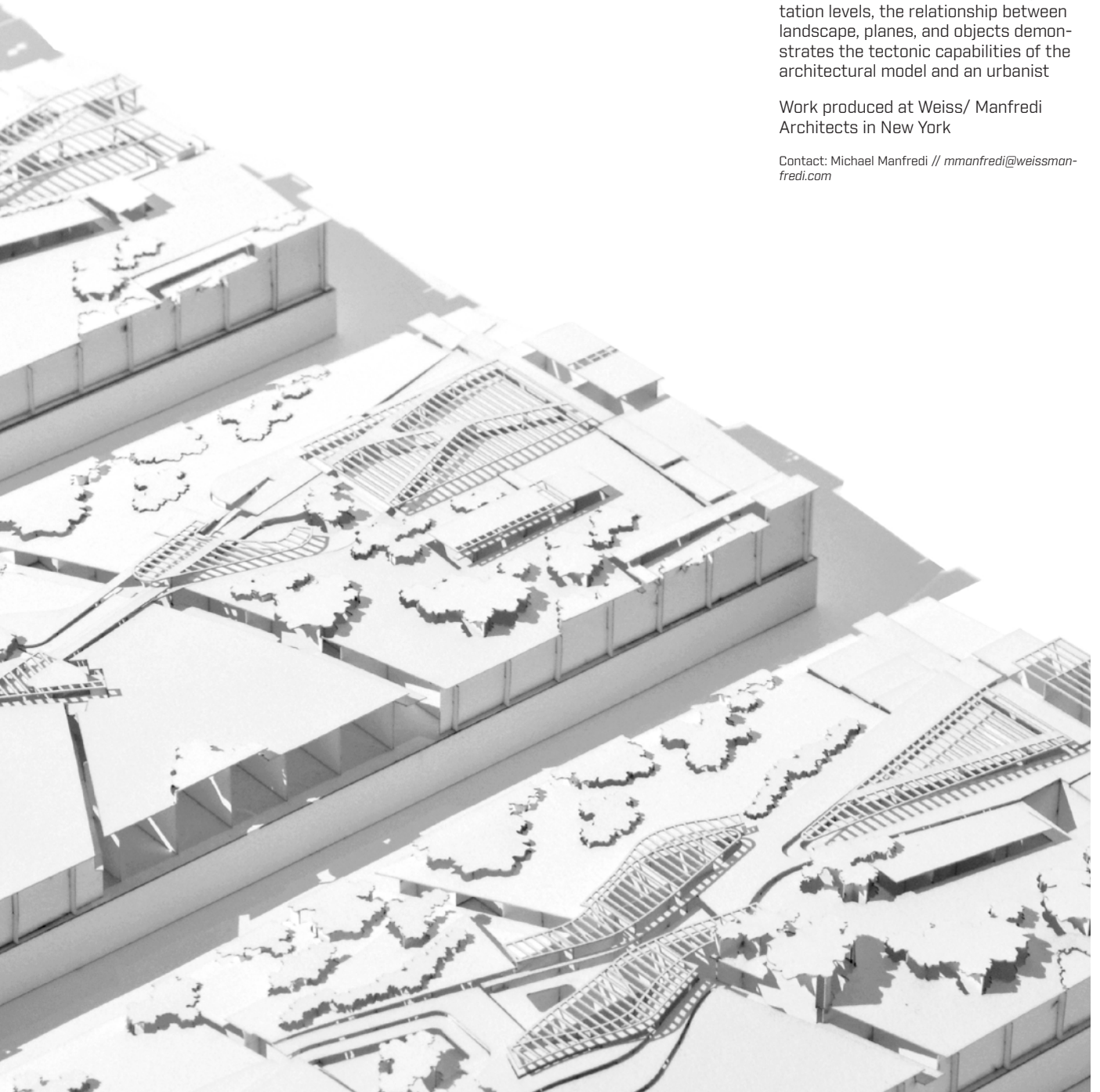
# PROCESS IN RELIEF

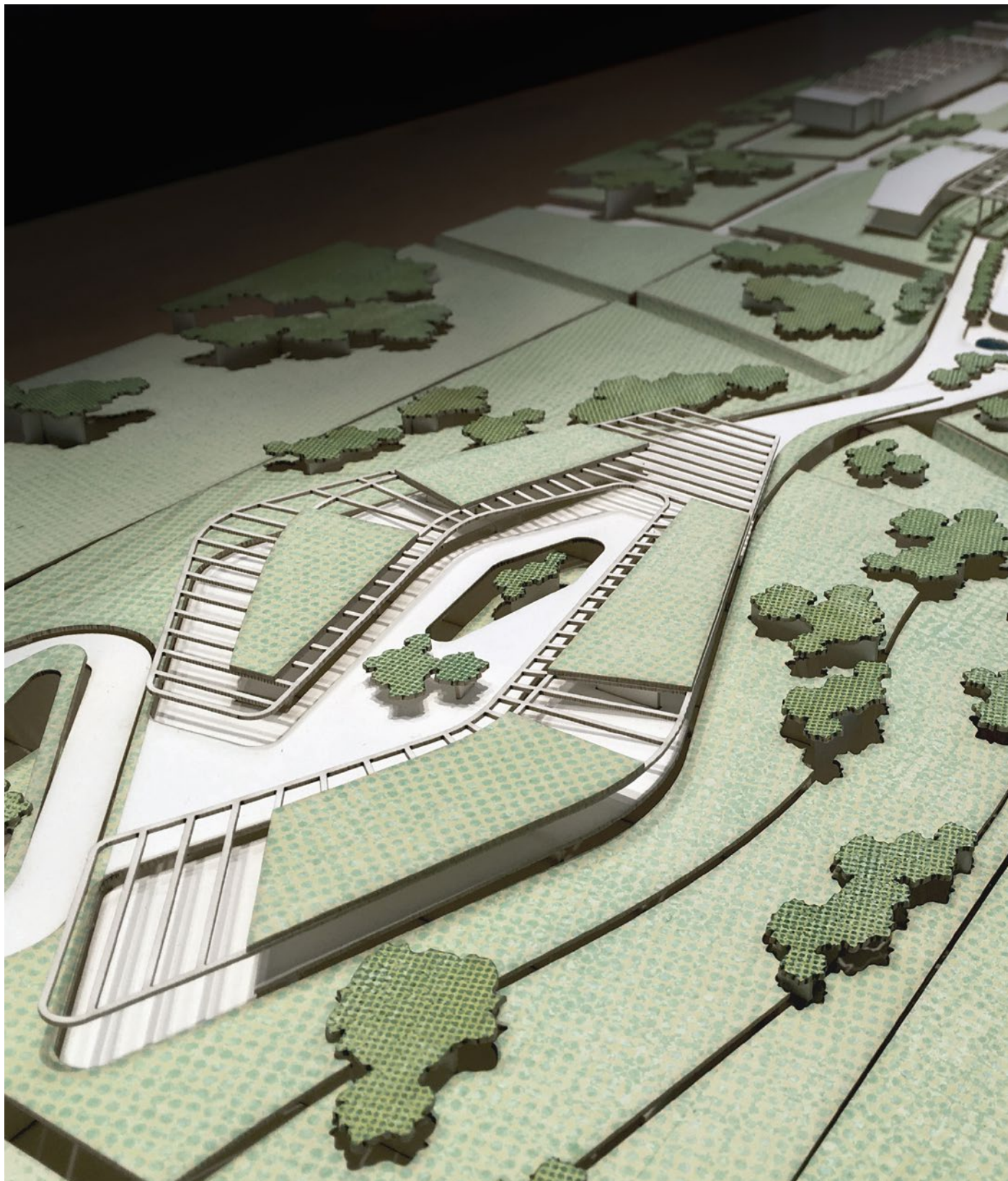
My professional work involves the translation of both conceptual and fully developed architectural projects into a language that is both communicable to clients and the public.

Working primarily in the production of physical models of all scales and presentation levels, the relationship between landscape, planes, and objects demonstrates the tectonic capabilities of the architectural model and an urbanist

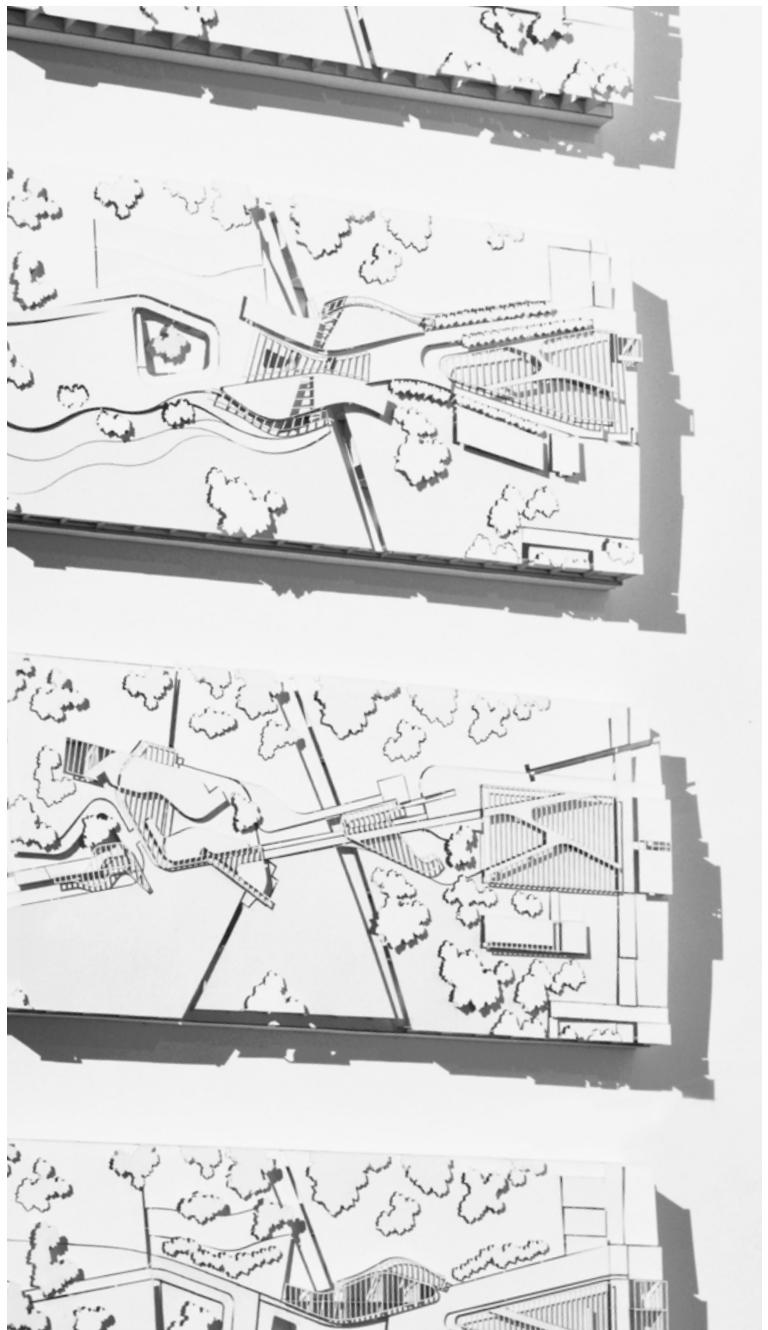
Work produced at Weiss/ Manfredi Architects in New York

Contact: Michael Manfredi // [mmanfredi@weissmanfredi.com](mailto:mmanfredi@weissmanfredi.com)





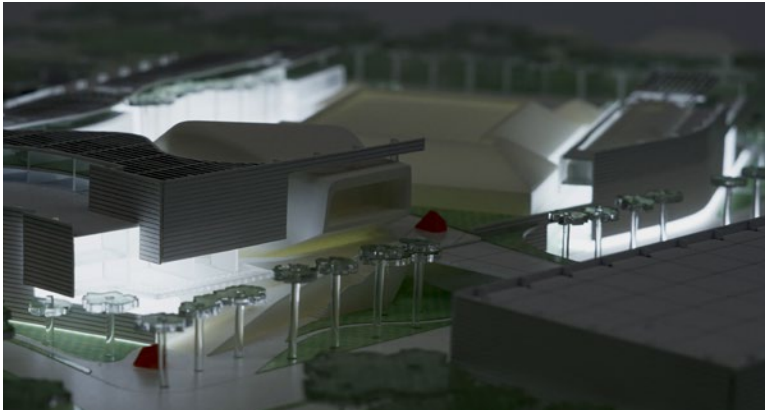
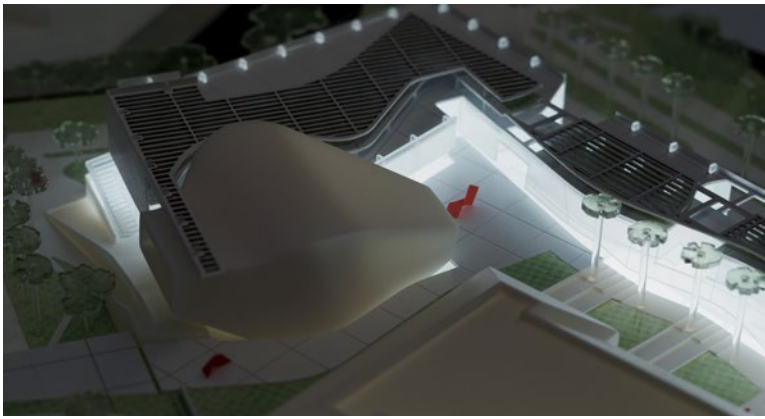




## SCHEMATIC DEVELOPMENT, CLIENT PRESENTATION MODEL

An internally illuminated acrylic and resin-printed client presentation model, meant to highlight conceptual relationship between existing buildings, landscape, and the extension of a contextual urbanist gesture.

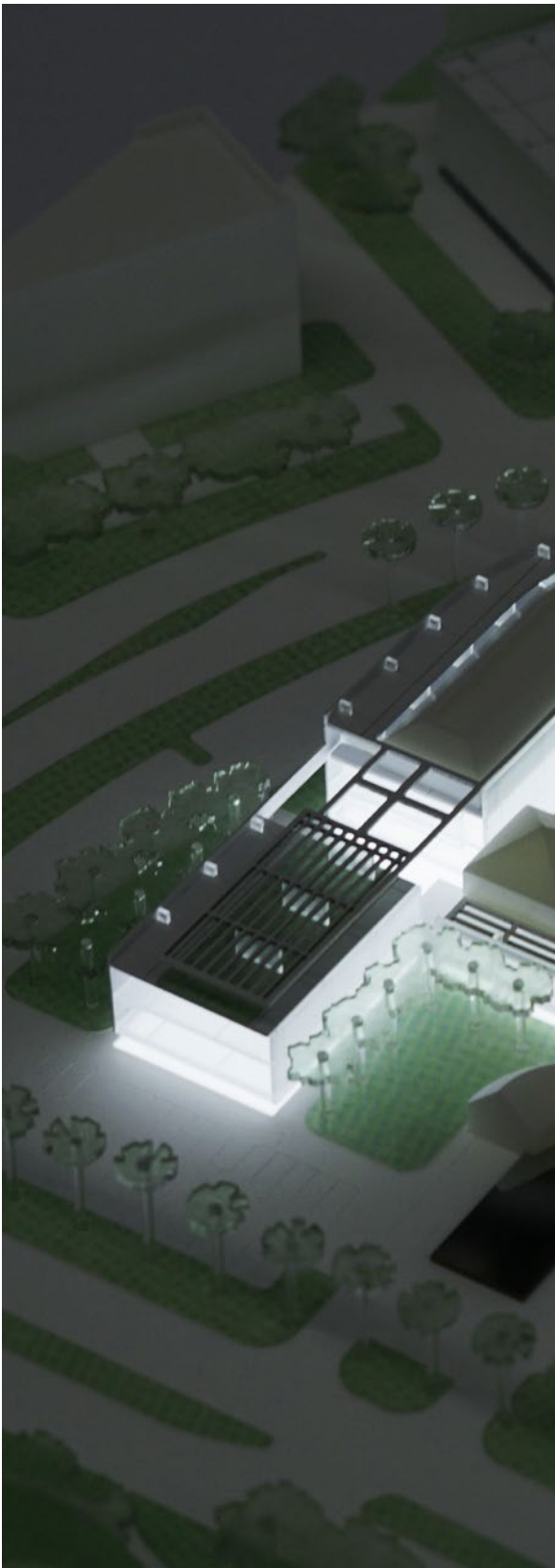
[Completed in house at W/M Architecture/ Landscape/ Urbanism.  
Constructed in conjunction with Benjamin Pennell // [bnpennell@gmail.com](mailto:bnpennell@gmail.com)



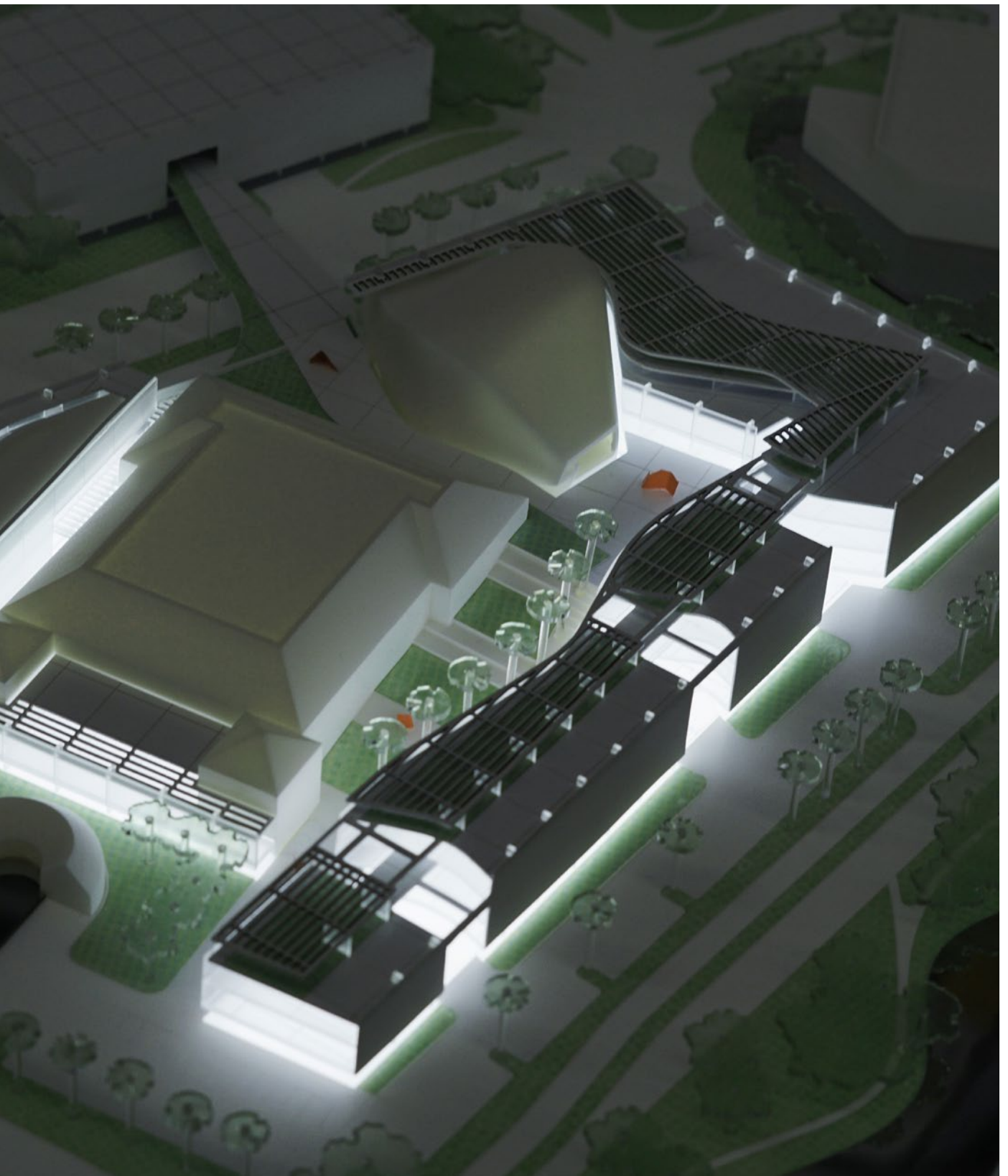
# CONCEPT DESIGN, FINAL PRESENTATION MODEL

An internally illuminated acrylic and resin-printed client presentation model, meant to highlight conceptual relationship between existing buildings, landscape, and the extension of a contextual urbanist gesture. Project scope included 3D Rhino Model development, laser cutting and 3D resin printing, powder painting, fabrication and assembly.

[Completed in house at W/M Architecture/ Landscape/ Urbanism.  
Constructed in conjunction with Benjamin Pennell // [bnpennell@gmail.com](mailto:bnpennell@gmail.com)





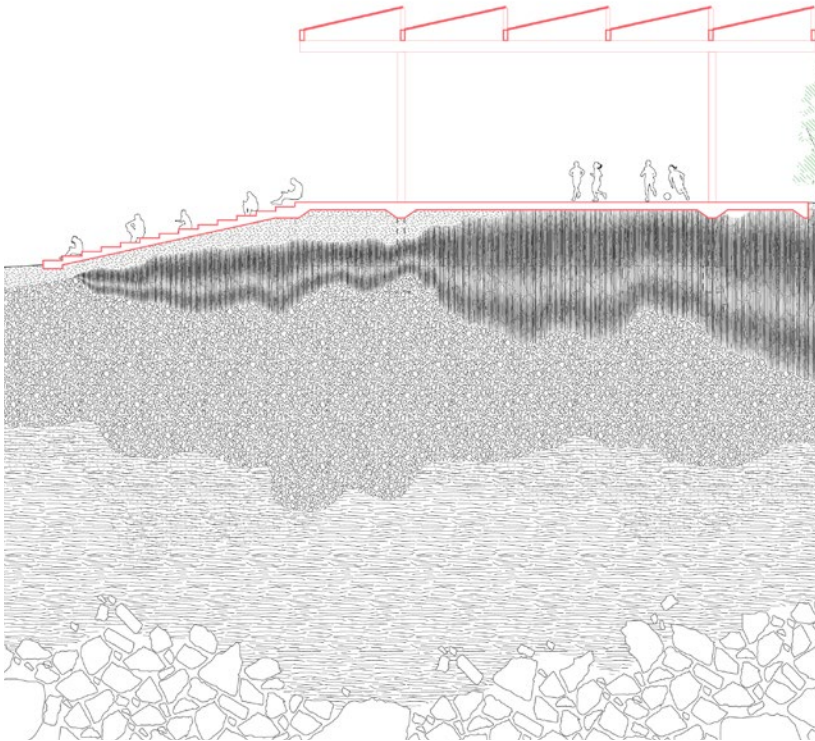


# ARCHITECTURE OF THE GROUND

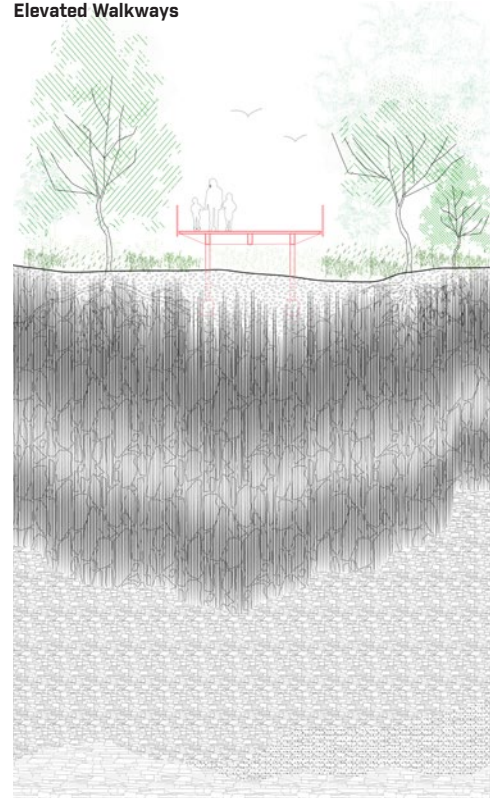
Work produced at TVK Architects in Paris, FR  
Contact: Pierre Alain Trévelo, trevelo@tvk.fr



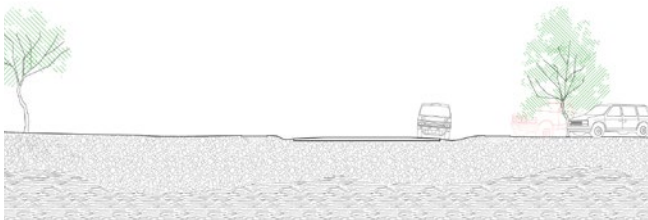
**Covered Athletic Spaces**



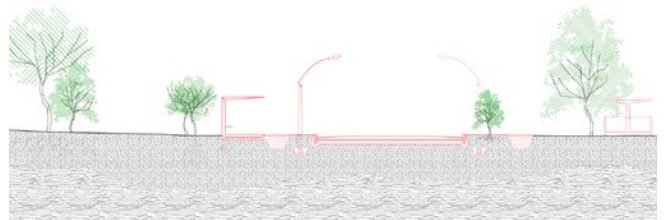
**Elevated Walkways**



**Site Perimeter, Season 1**



**Site Perimeter, Season 2**



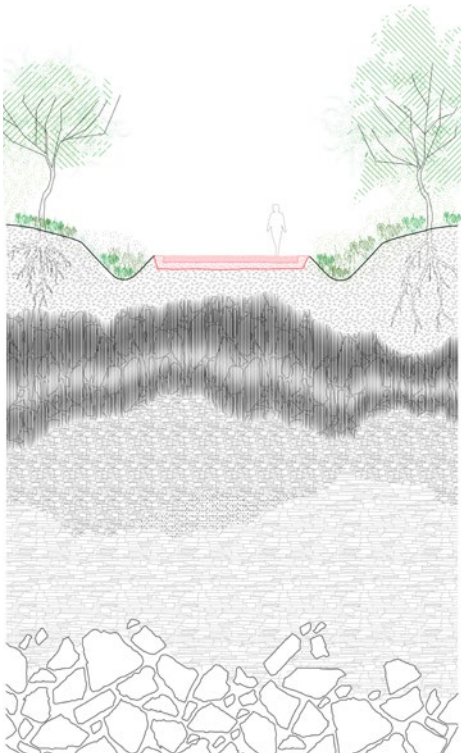




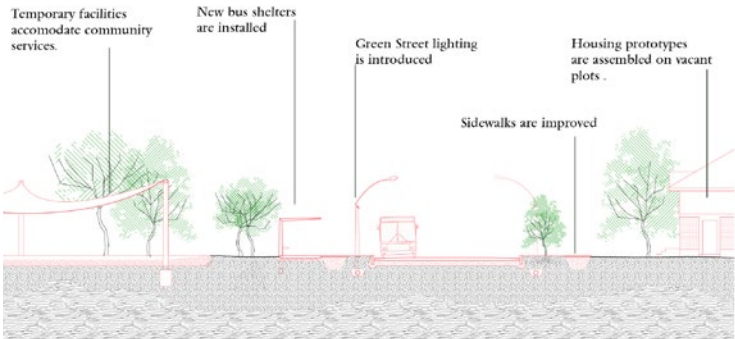
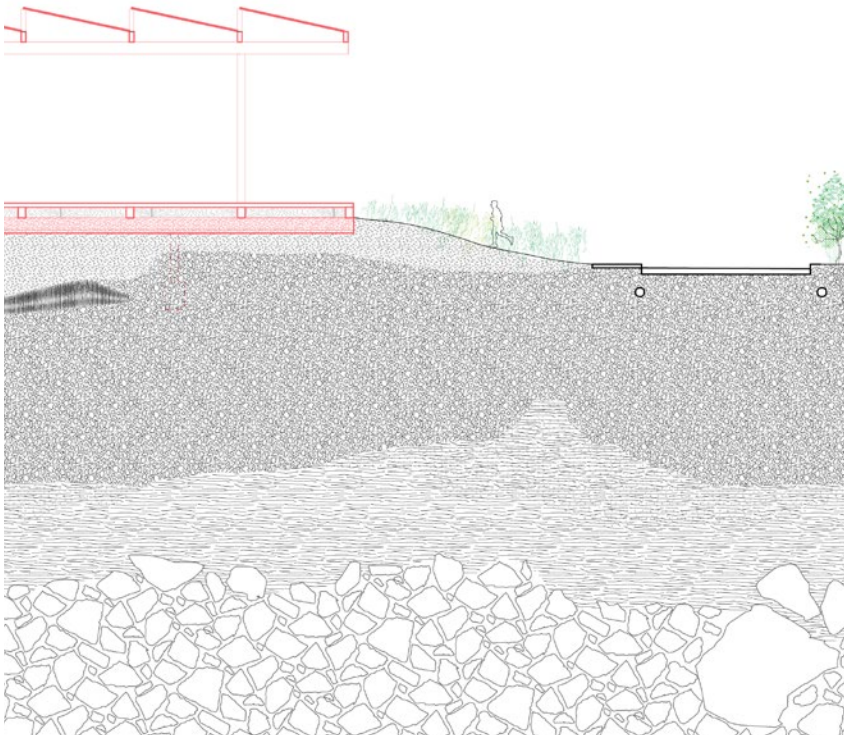
## Sunnyside Landfill Redevelopment

A three “season” approach to the redevelopment of a former landfill in the Sunnyside neighborhood of Houston, Texas. The project centers around the renewal of a highly contaminated soil, to transform a derelict and toxic parcel of land into a functional, informative and energy-innovative contribution to the community.

### Landform Soil Mitigation



### Site Perimeter Improvements



### Site Perimeter, Season 3

#### A Ground-Oriented Approach

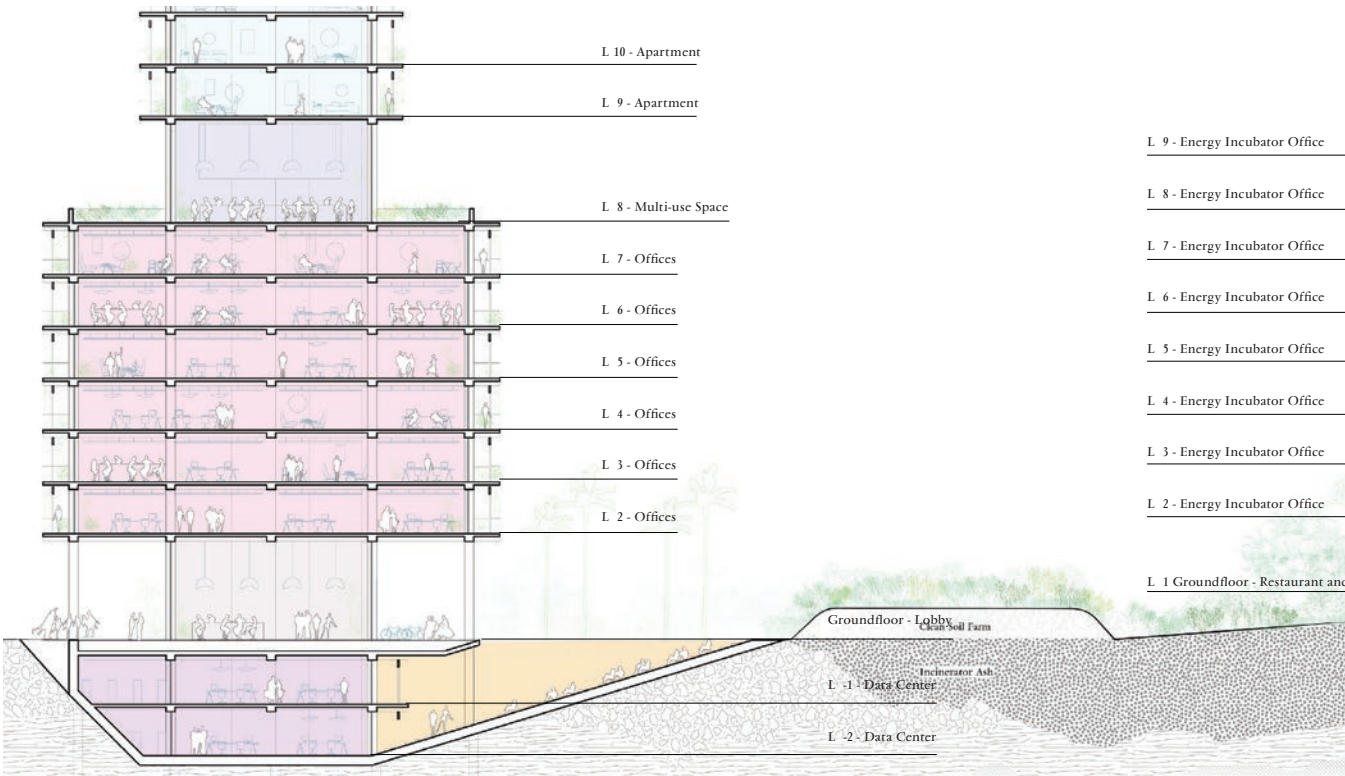
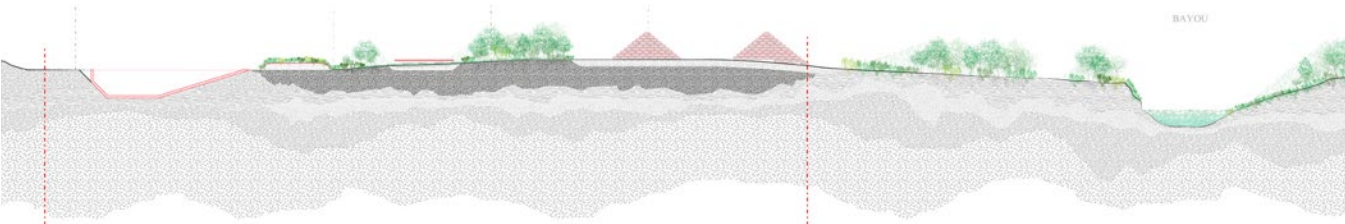
Tethered to the ground, our project generates a “productive” soil out of a formerly toxic wilderness. Rich, habitable forest and active, social spaces emerge in a strategy targeting the ground plane. Social services and infra-structural improvements radiate outwards from the site’s perimeter.

**Velasco Incinerator  
Redevelopment**

A three “season” approach to the redevelopment of a former waste incinerator in Houston, Texas, adjacent to the Buffalo Bayou. Taking the form of a mid-rise “Energy Incubator” and research building, high-rise timber office and housing, and a performative earthen mound meant to socialize and celebrate the renewal of the ground.



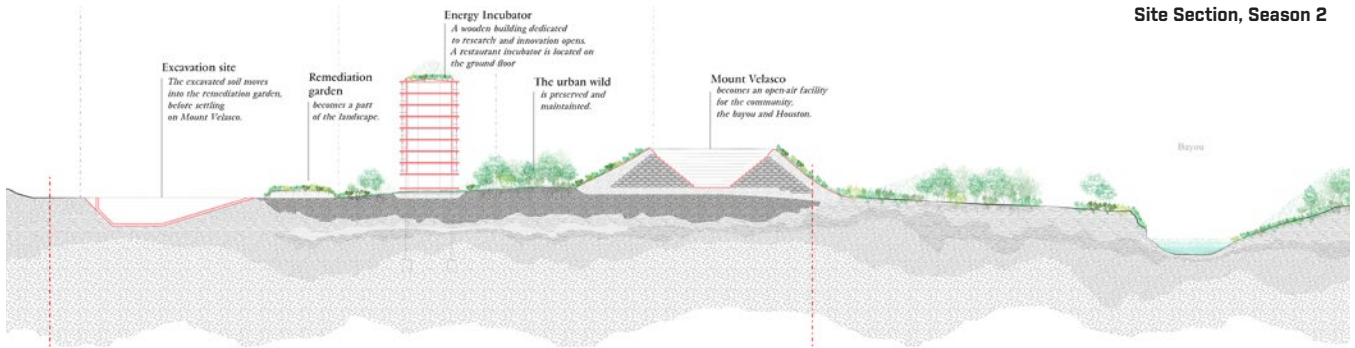
Site Section, Season 1



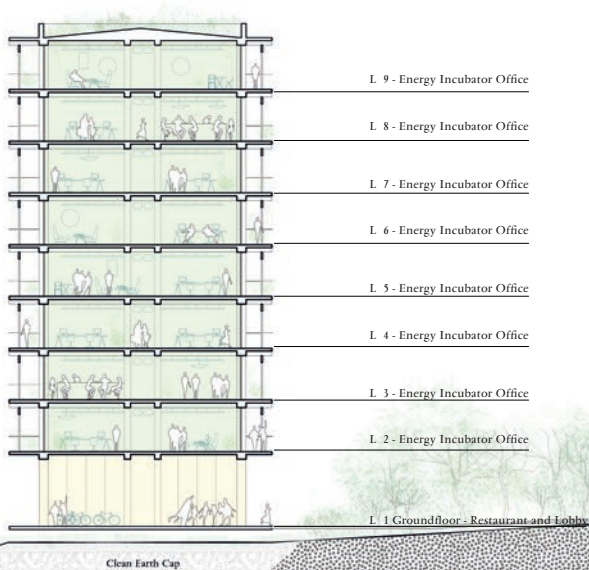




**Site Phasing,  
Season 1-3**

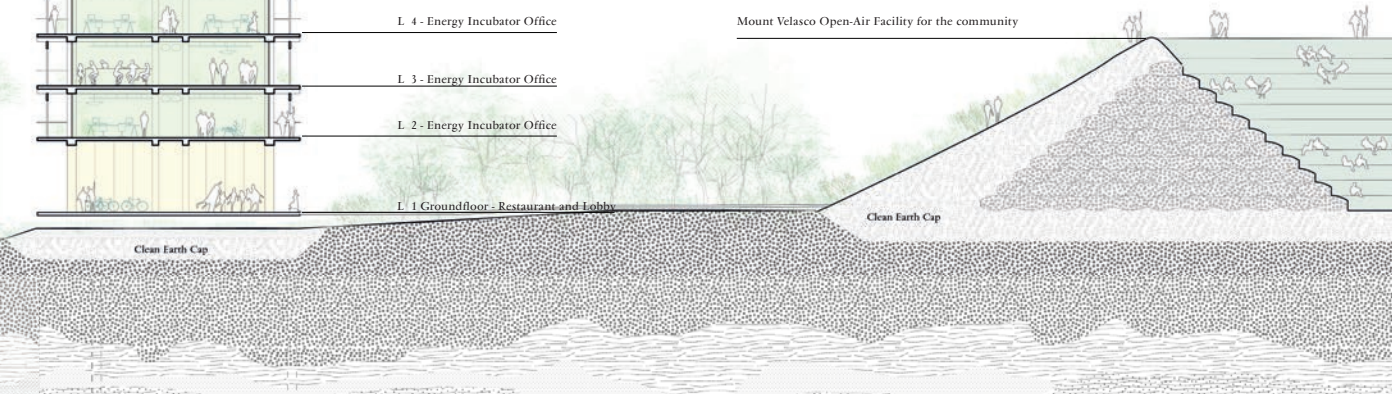


**Site Section, Season 2**



**Schematic Design, Season 3**

Developed Schematic Design illustrating allocation of program, timber-frame structural considerations and advancement of social and ecological considerations





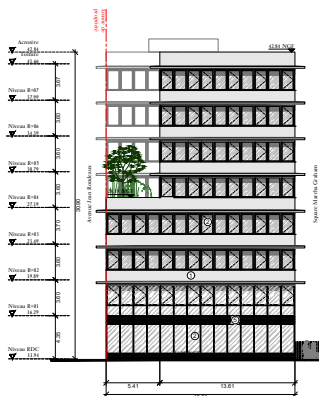
# A MODEL BUILDING

Work produced at TVK Architects in Paris, FR  
Contact: Pierre Alain Trévelo, [trevelo@tvk.fr](mailto:trevelo@tvk.fr)

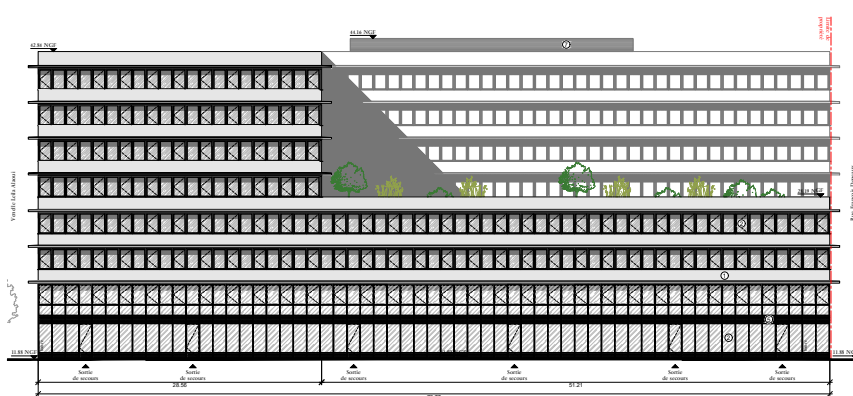


## CLIENT MODEL, Rouen Ecoquartier Flaubert

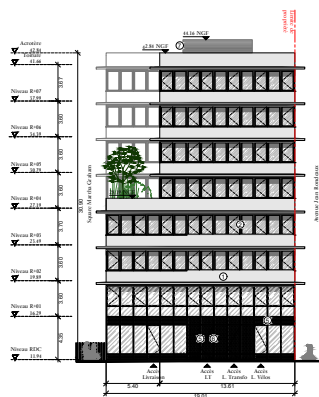
A plaster cast facade and interior study meant to highlight tactile, and light-catching qualities of concrete construction, as well as demonstrate human scale relative to window framing module. Project scope included 3D Model development, laser cutting and plaster casting, fabrication and assembly.



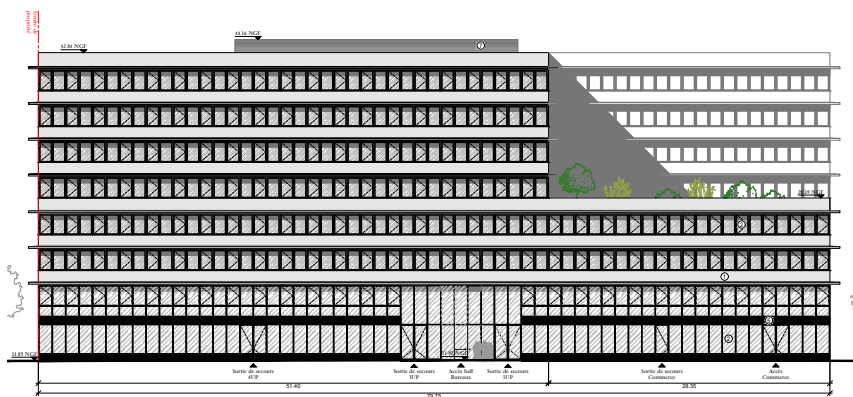
ELEVATION  
VENELLE LEILA ALAOI



ELEVATION  
SQUARE MARTHA GRAHAM



ELEVATION  
RUE FRANCOIS DEPEAUX



ELEVATION  
AVENUE JEAN RONDEAUX





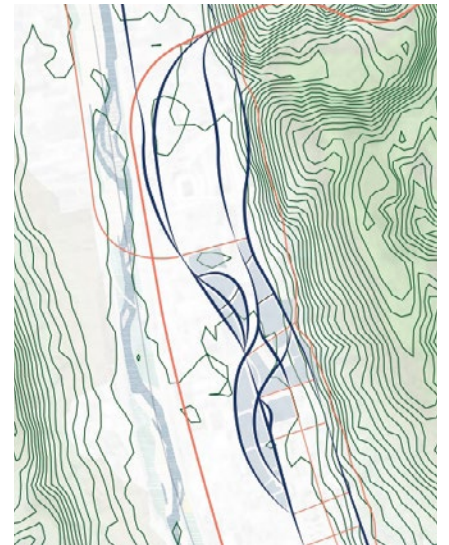


# AN URBAN ECOQUARTER

Work produced at TVK Architects in Paris, FR

Contact: Pierre Alain Trévelo, trevelo@tvk.fr

The development of a new Eco-quarter in this French city, focused around a river invited us to build an urban space compatible with the local ecology. The history of the plain highlights an ongoing dialogue between humanity and the river, to control hazards and set up human activities. The controlled urbanization of valley must register in this historical interaction between the man and nature. Our approach, necessarily territorial, preserves and amplifies an exceptional site while deploying new qualities in the valley and the surrounding metropolis.



RIVER & URBAN FLOW IN SYNC





## URBAN STRATEGY, Phasing, Massing & Green Space











# FREE FORM

**Location:** Houston, TX, USA

**Site:** Midtown District

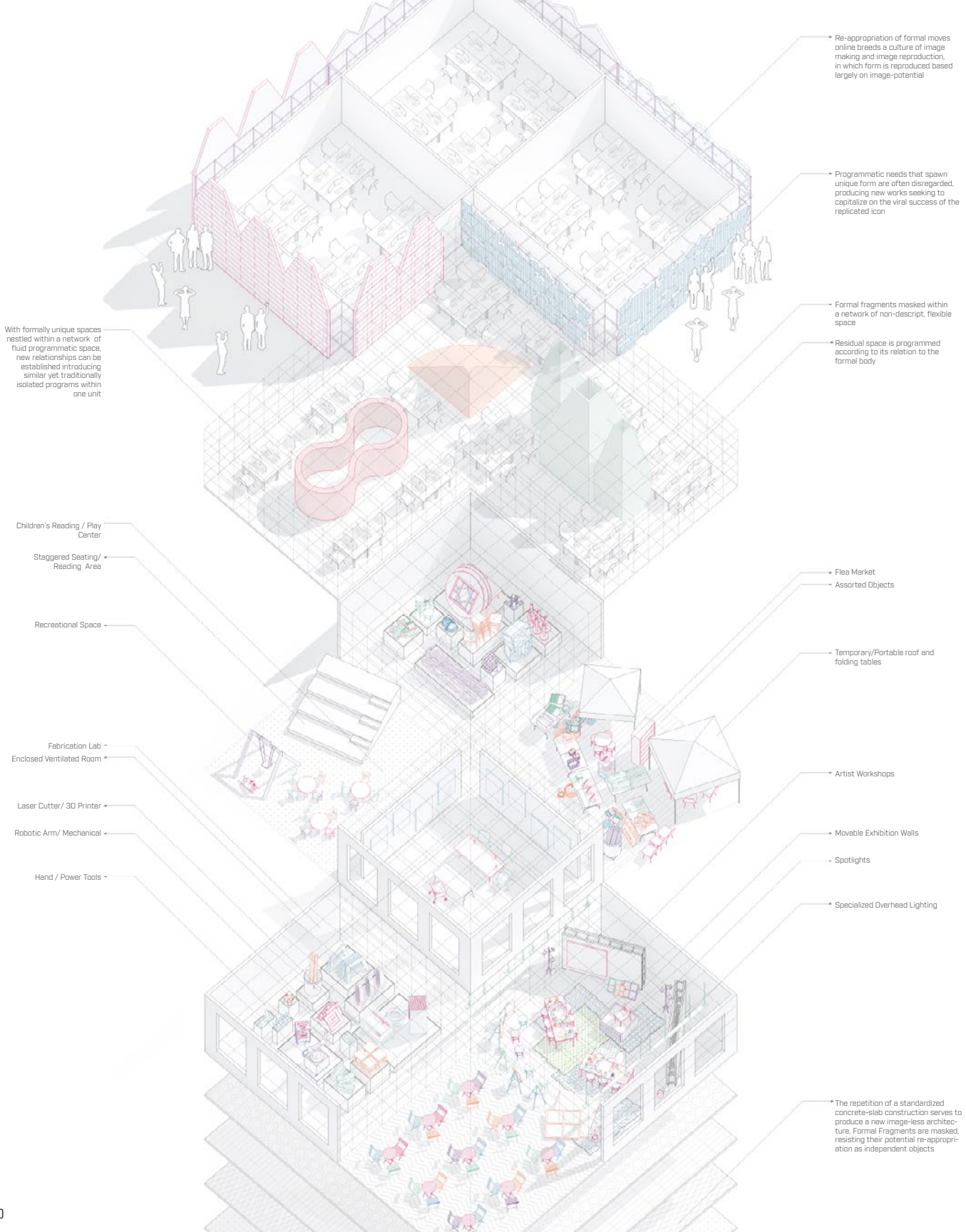
**Program:** Community Center/  
Office

**Area:** 161,000 sq.ft/ 15,000m<sup>2</sup>

**Task:** Utilize building fragments, details, and formal gestures in plan and section from precedent studies to construct a functional mixed-use building with hybrid programmatic relationships

The intention of this project is to counter the nature of lost specificity in re-appropriated form, by proposing a system in which building profiles are generated and hidden to avoid re-branding as an image to be disseminated on the virtual marketplace. By utilizing a standardized system of concrete slab construction, one of the “typical” construction practices in the global city, the formal gestures and internal specificities nestled within the system are shielded from a superficial level of formal re-appropriation.

Operating around these spaces are uses not beholden to a specific architectural or spatial system, programs in which the “generic” system is in fact the best template. Within these forms, specific programmatic areas are created that are inherently operating under the architectural bounds in which they exist. The intention is to create a combination of cultures, the operation of the specific and the flexible, the generic and the hyper formal within one building.



With formally unique spaces nestled within a network of fluid programmatic space, new relationships can be established introducing similar yet traditionally isolated programs within one unit

Children's Reading / Play Center

Staggered Seating / Reading Area

Recreational Space

Fabrication Lab  
Enclosed Ventilated Room

Laser Cutter/ 3D Printer

Robotic Arm/ Mechanical

Hand / Power Tools

Re-appropriation of formal moves online breeds a culture of image making and image reproduction, in which form is reproduced based largely on image-potential

Programmatic needs that spawn unique form are often disregarded, producing new works seeking to capitalize on the viral success of the replicated icon

Formal fragments masked within a network of non-descript, flexible space

Residual space is programmed according to its relation to the formal body

Flea Market  
Assorted Objects

Temporary/Portable roof and folding tables

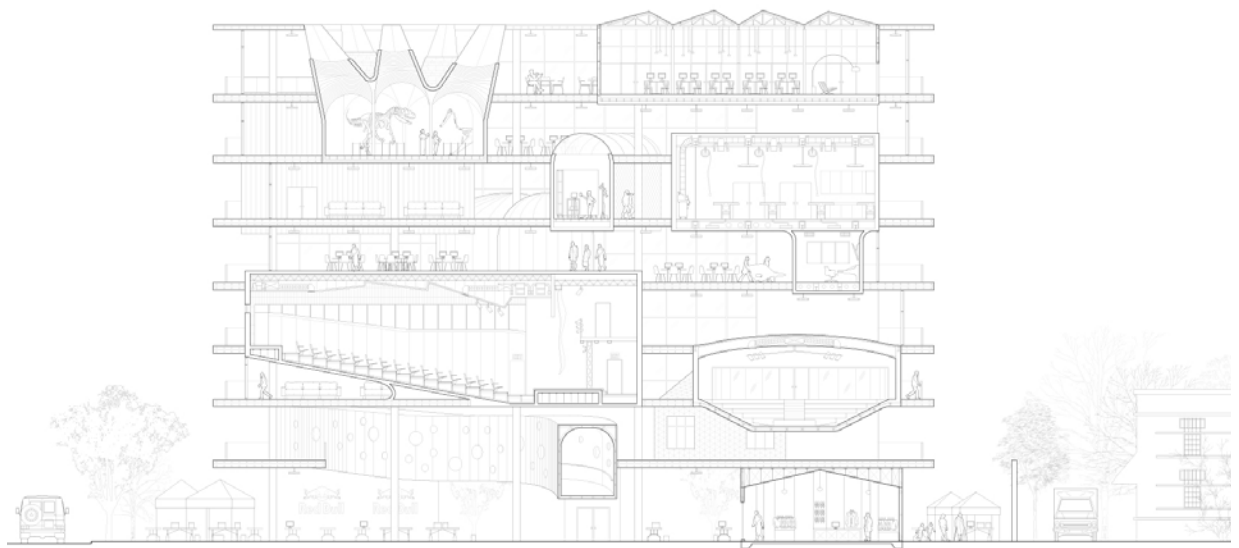
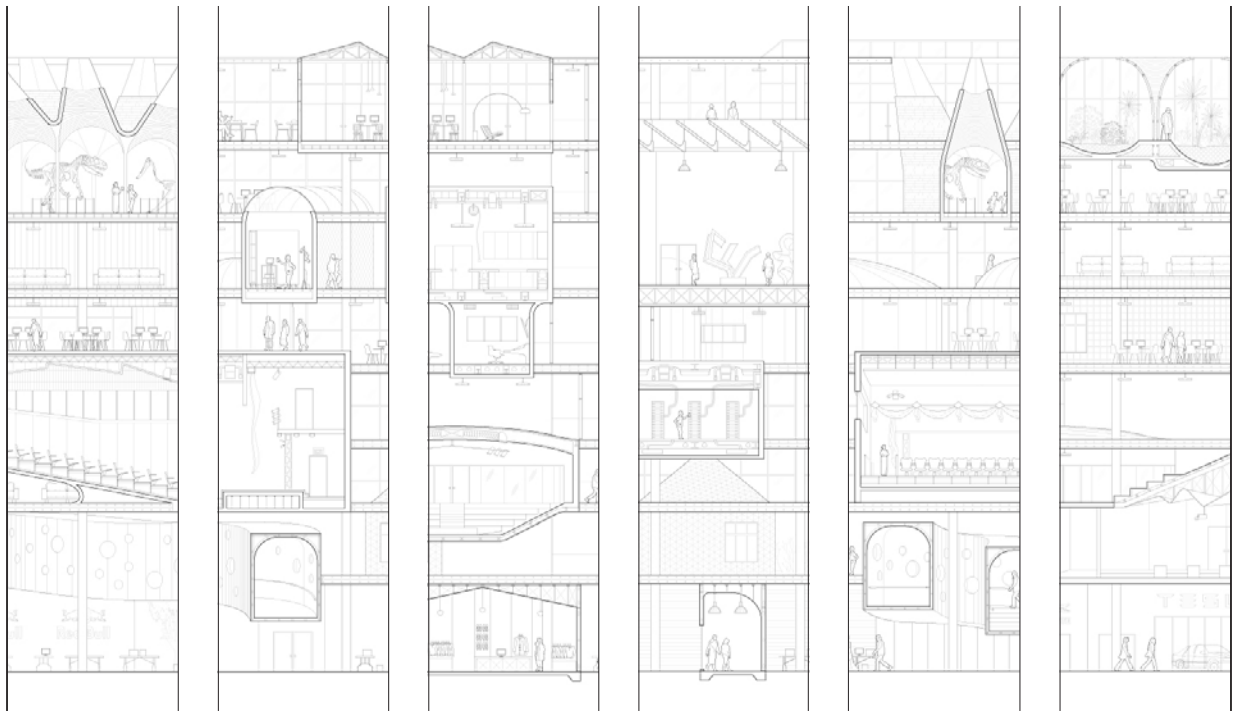
Artist Workshops

Movable Exhibition Walls

Spotlights

Specialized Overhead Lighting

The repetition of a standardized concrete-slab construction serves to produce a new image-less architecture. Formal Fragments are masked, resisting their potential re-appropriation as independent objects

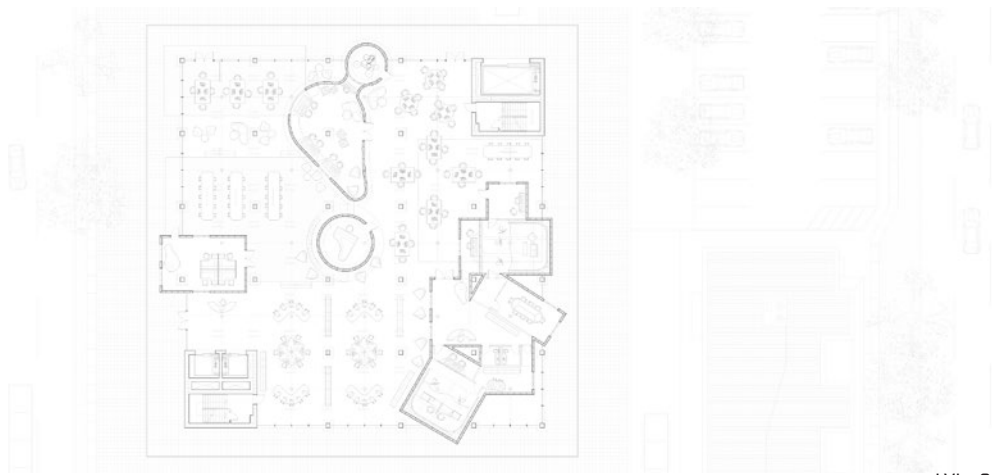


TRANSVERSE SECTION AA

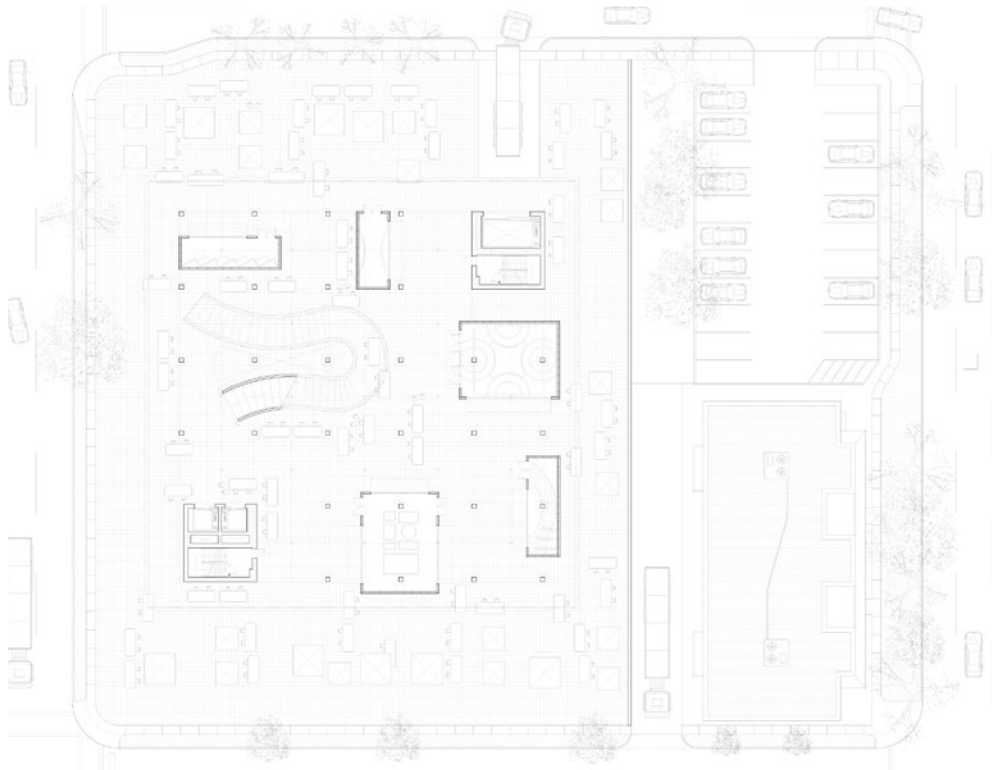
In section, formally distinct fragment spaces are cast within the 8 story vertical array of concrete slabs, simultaneously sheltering them from direct street-side view but also providing the opportunity to float these volumes within the system, irrespective of the

standardization provided by the slabs. Here, plateaus and double height spaces, balconies and lowered ceiling heights serve to provide a these object's functions, even from the outside of their programmed space.





LVL.+6

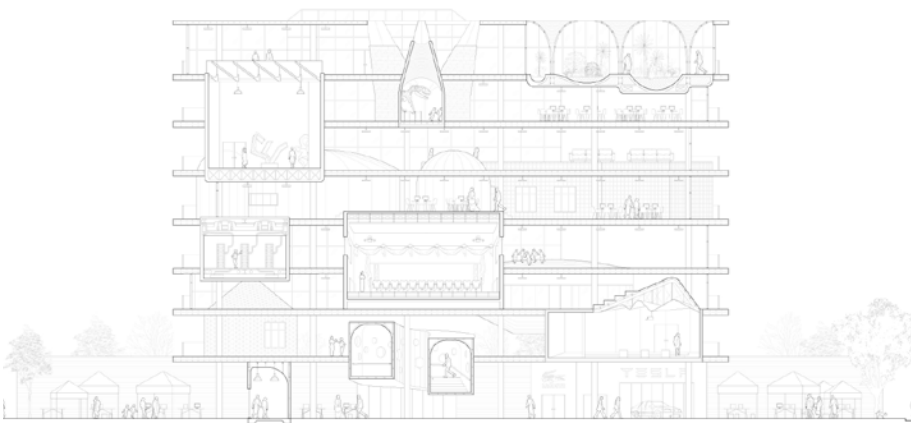


LVL.0



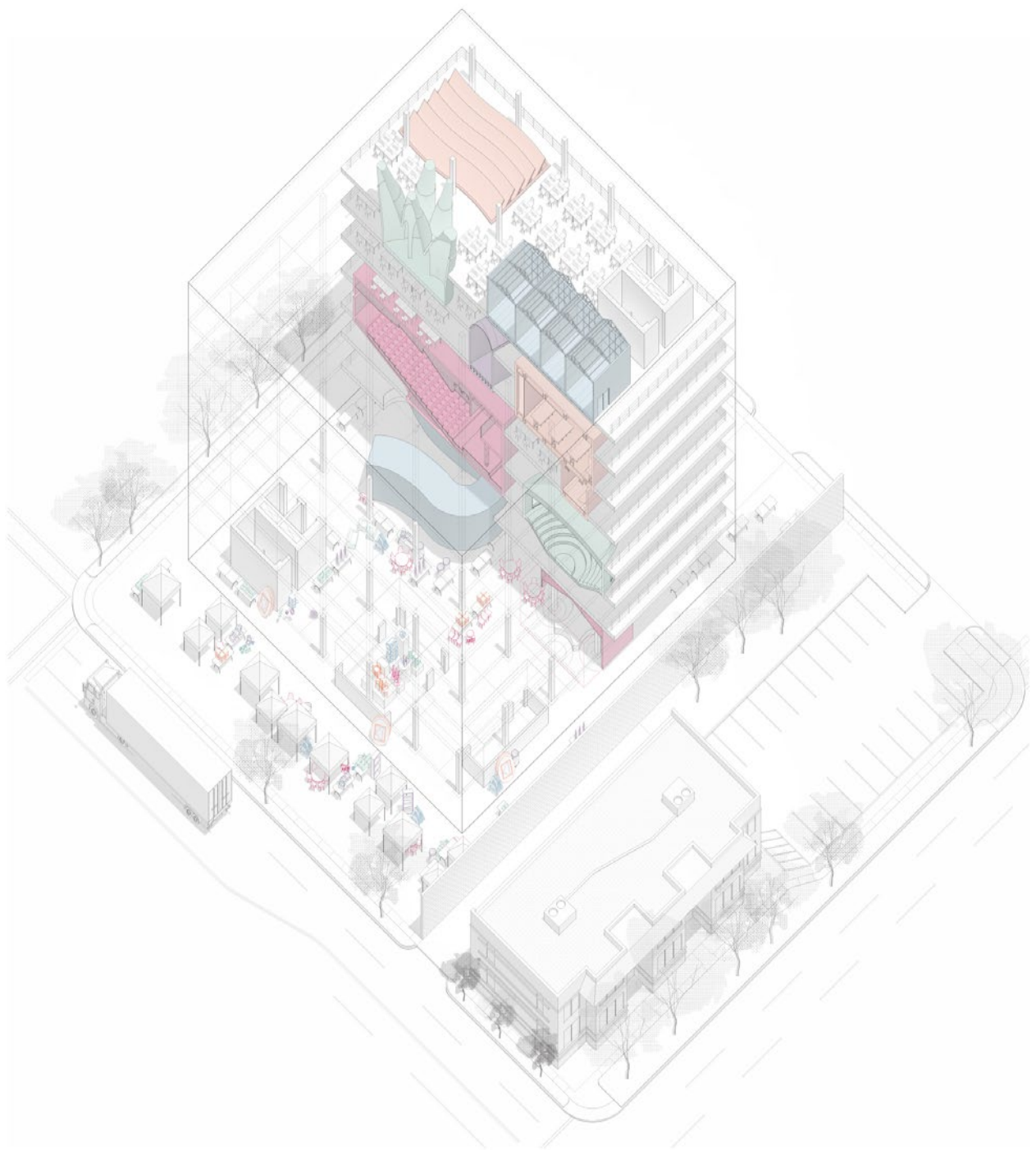
**Field Condition**

In plan, the project inserts formally unique objects in such a manner as to introduce variety to a system of unprogrammed exterior space. These objects, including circulation cores, stairways, and specially programmed volumes generate variety which diversifies a conventionally repeating floor plan of the repeated concrete slab, allowing for moments of discovery and unanticipated interaction of programs and user types.



TRANSVERSE SECTION BB









# CLIFF FACE

**Location:** Lima, Peru

**Site:** Antonio Raimondi Park, Miraflores

**Program:** Centre for Andean Tourism

**Area:** 86,000 sq.ft/ 8,000m<sup>2</sup>

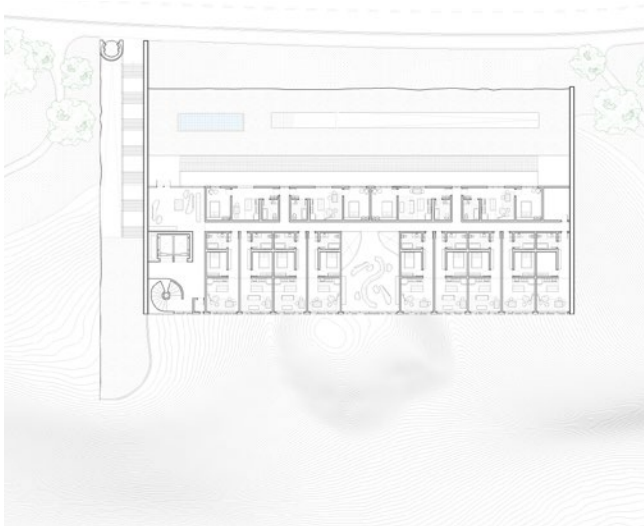
**Task:** Respond to a highly specific and delicate context, establishing a museum as both a response to, and a celebration of, the geologic and cultural legacy of the Andes Mountains.



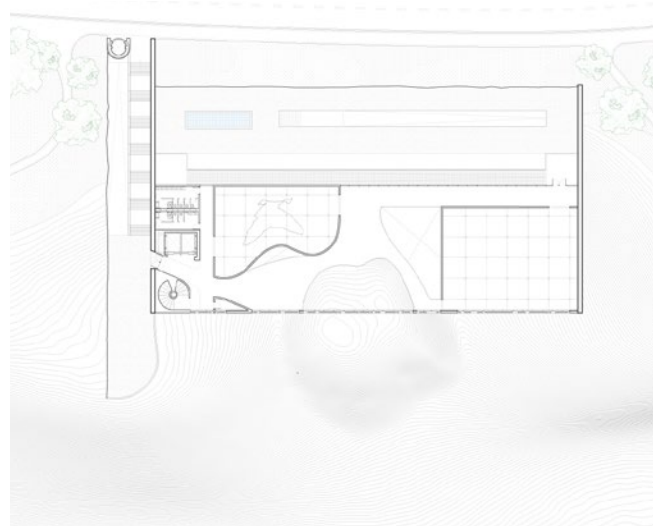
The primary mission for this project is to generate a building which can illicit, through the sheer experience of an individual being within it, a physiological connection to the Earth. More specifically, this project maximizes the potentials of its location not through exploitation of awe inspiring waterfront views, but for the power generated by the opposite gesture - a retraction inwards, an excavation into the very bedrock of the cliffs.

A building which strives to be a centre of regional art, food, and culture in a global city, CLIFF FACE embeds itself into the geological footprint of Latin America, turning its visitors away from the cacophonous global nature of the Lima megalopolis, and allows for a more subtle, subdued appreciation for the histories - both geological and cultural, which this centre seeks to preserve and celebrate.

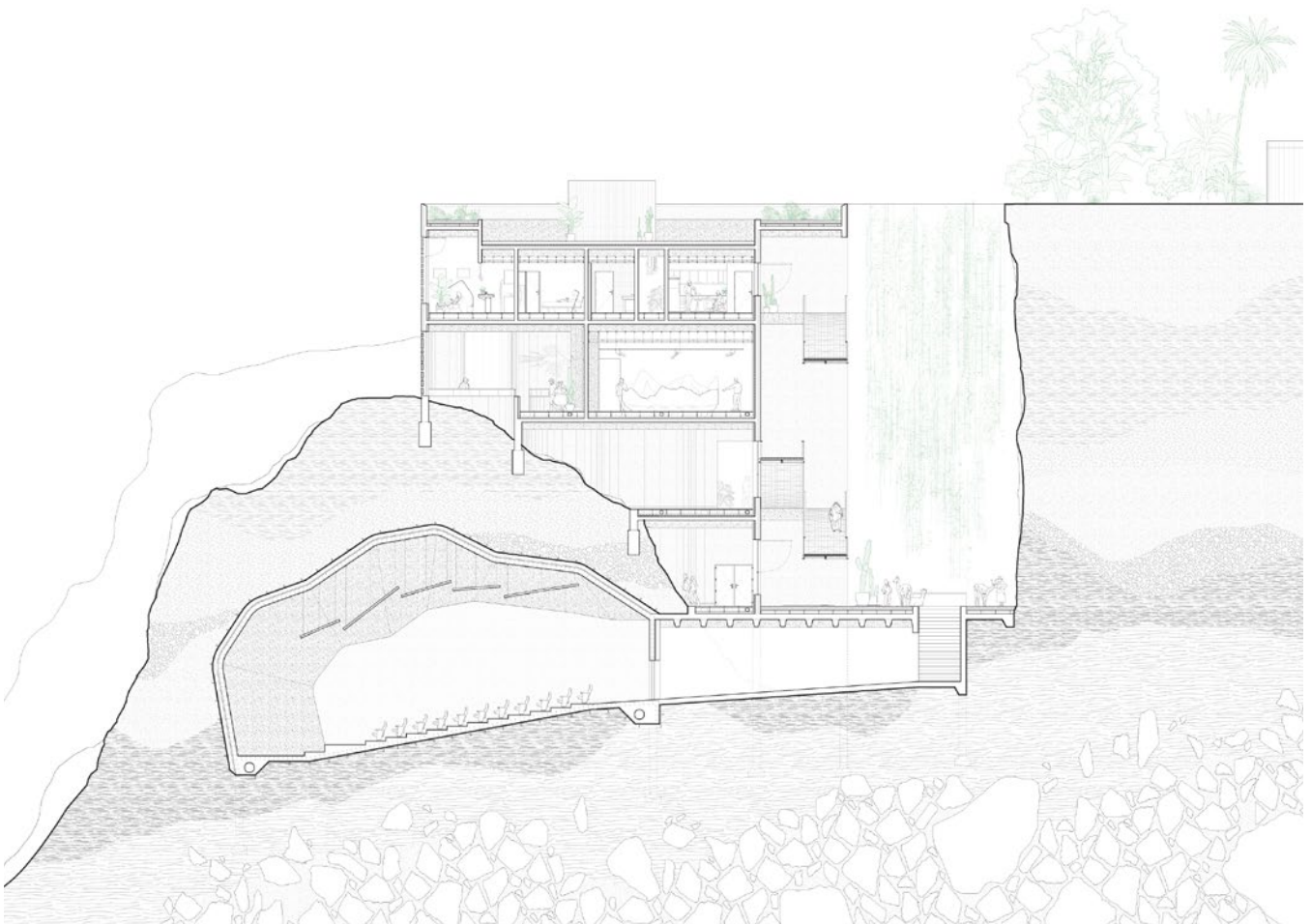




LVL.+3



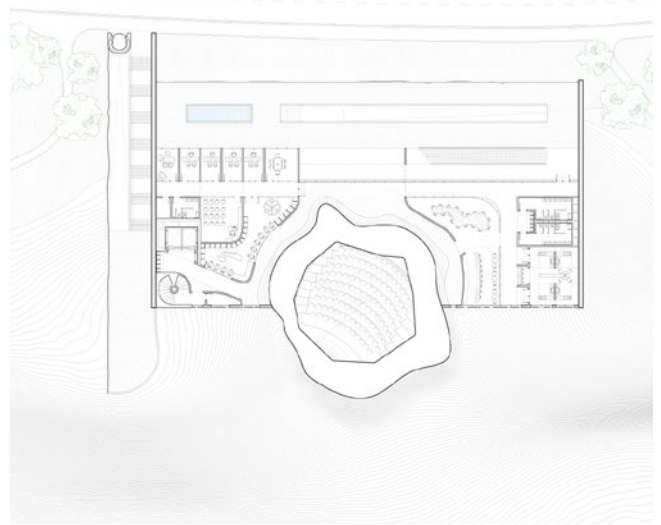
LVL.+2



CLIFFSIDE CROSS SECTION



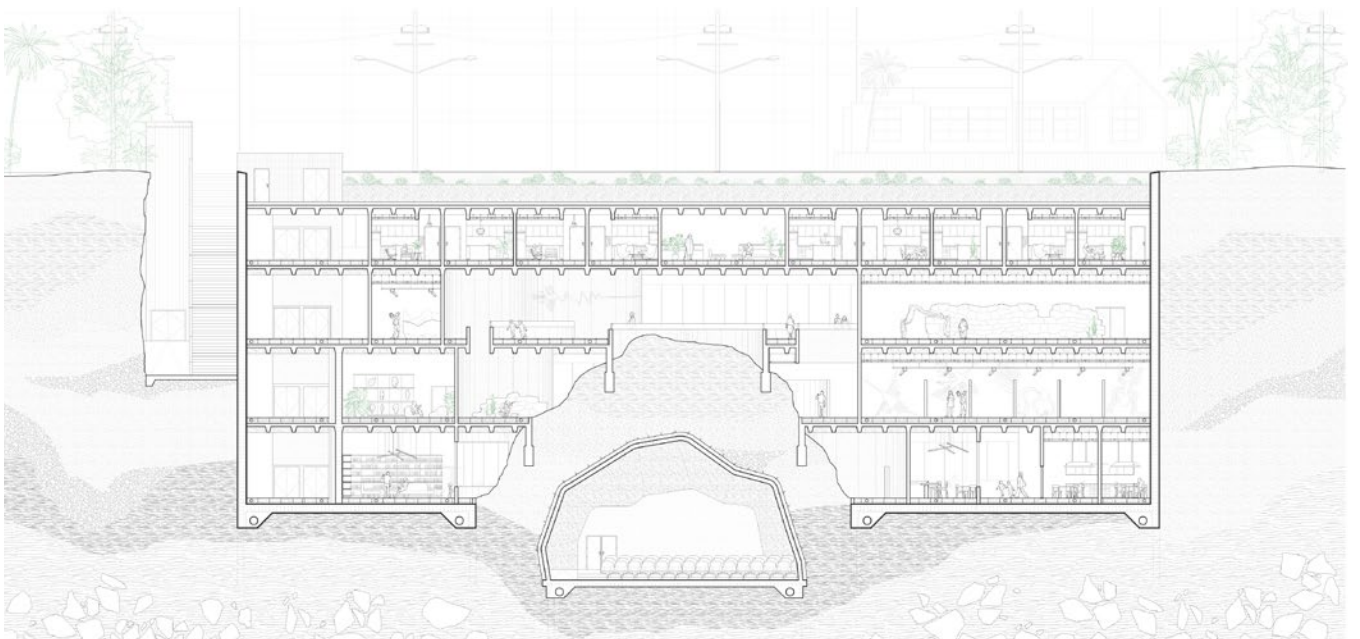
LVL.+1



LVL.0



SITE PLAN, MIRAFLORES DISTRICT



LONGITUDINAL SECTION



