

kbeckman.wix.com/beckmandesigns

kelly.c.beckman@gmail.com  
936.499.1260

PROFESSIONAL WORK

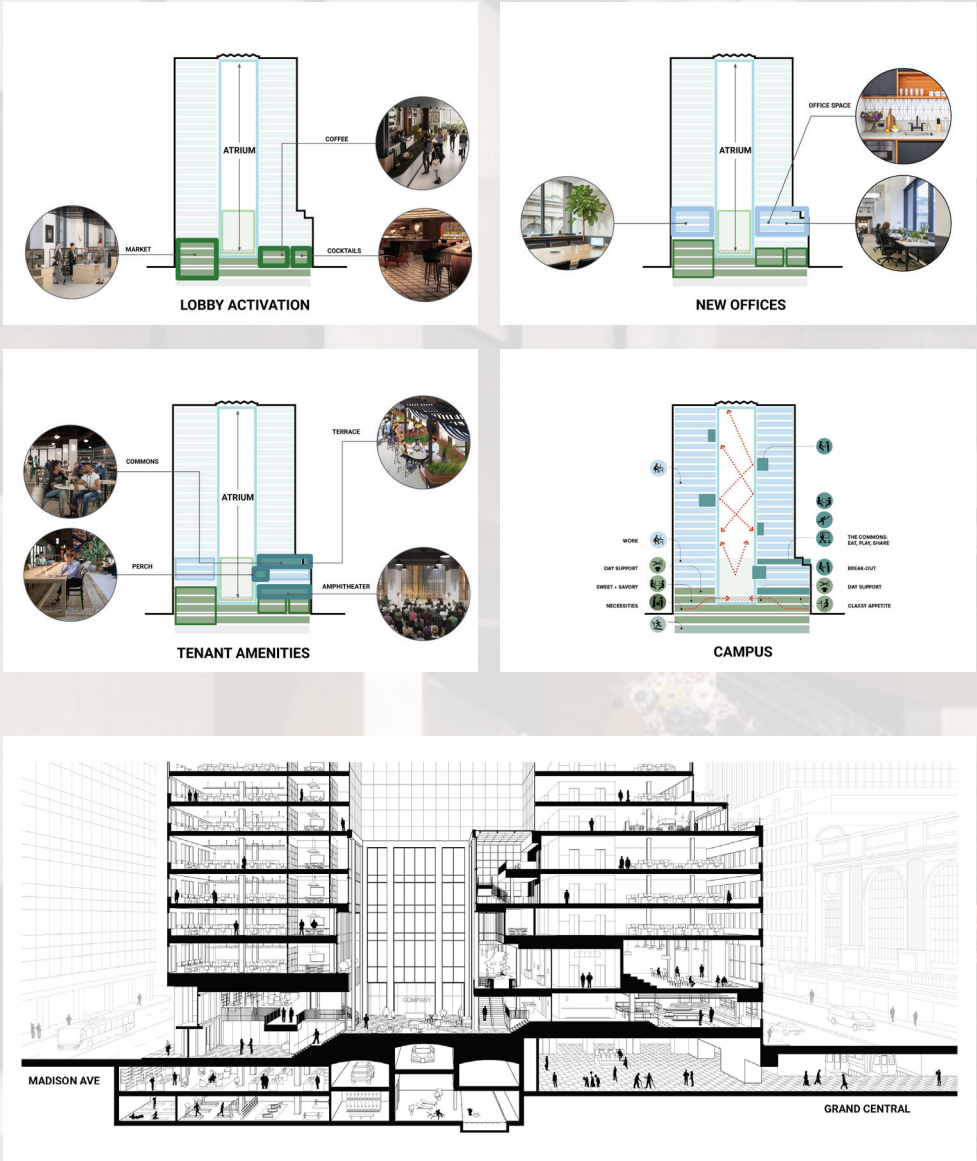
COMPANY AT 335 MADISON	SHOP ARCHITECTS 2016 - 2020	2 - 4
9 DEKALB CONDOMINIUMS		5 - 6
US EMBASSY - BANGKOK		7
MIDTOWN INNOVATION HUB		8
DOHA BANK HEADQUARTERS	PEI COBB FREED 2014 - 2015	9
SPECTRUM CENTER		10
BOY SCOUTS OF AMERICA MASTER PLAN	GENSLER 2014	11

PERSONAL PROJECTS

HYDROTHERAPY CLINIC AND SPA   HOT : COLD	FALL 2015	12 - 13
LINEAR DENSITIES   PARIS, FRANCE	SPRING 2016	14
RICE BUILDING WORKSHOP PROJECTS	2012 - 2015	15

As part of the team at SHoP, we transformed this uninviting symbol of 80s corporate architecture into a fresh welcoming space that blends hospitality, technology, and design. At the core of our concept, is the idea of referencing the history of the building - rooted in old New York Grandeur with a sense of grand scale, timeless materials, and beautiful details - while also adding a layer of hospitality and contemporary office features. We aimed to internalize the buzzing neighborhood of NYC within the building to create a vertical innovation campus. Undertaking a complete renovation of the existing atrium lobby, multiple office floors, and adding amenity spaces, the team at SHoP transformed the building, adding a bar, event venues, a two-story library, wellness center & gym, retail spaces, multiple dining vendors, and a terrace overlooking Grand Central.

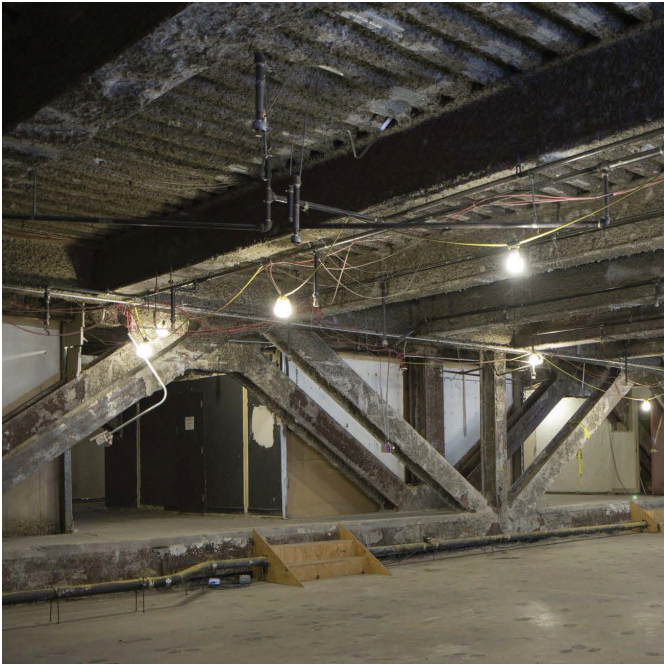
I worked on this project from concept through construction and aided in creating concept images & presentations, mood boards & collages, millwork & facade system details, selecting materials & products, and helping to manage the project through construction administration and completion. Through phases of office renovation, lobby and atrium rejuvenation, inserting community gathering spaces, and adding a layer of retail/food & drink programs, the team at SHoP was able to redefine and revitalize this unique space.



BAR

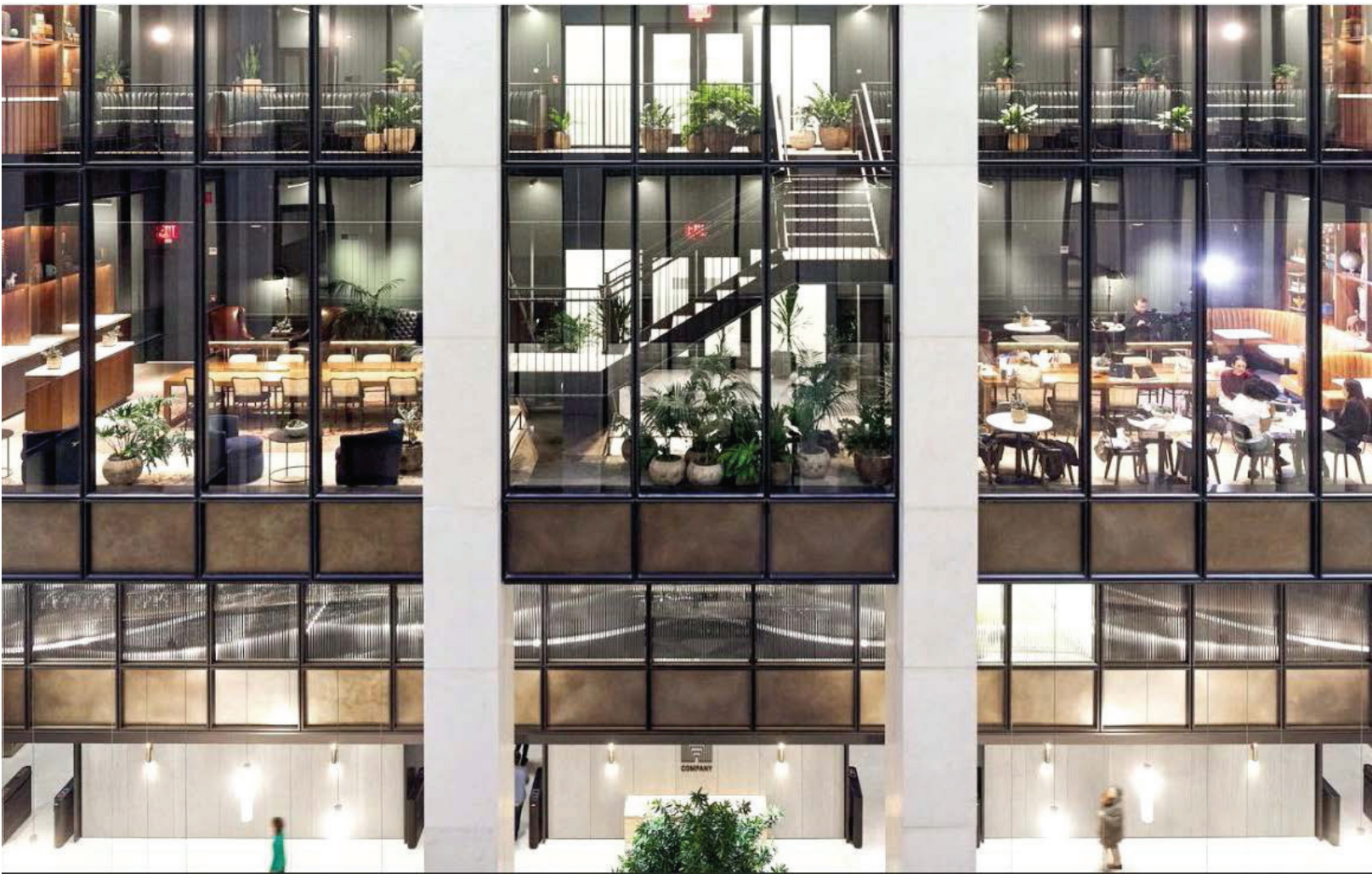
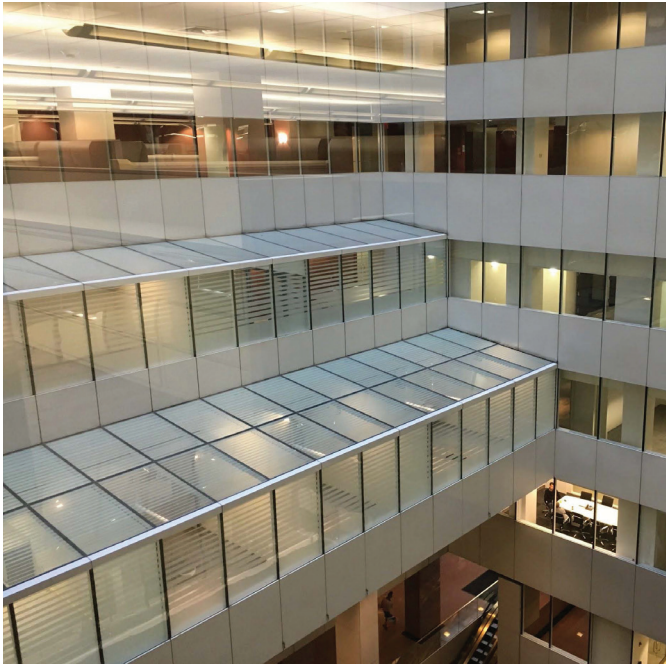
The bar, Bergamo's, is a 8,530 sqft lounge directly accessible from the lobby and Vanderbilt Avenue. The existing space had large steel trusses, which the team chose to expose and then layer in multiple levels of texture. This existing aspect drove much of the concept - to make the space feel historic by subtly referencing the building's original form (the Biltmore Hotel) and the nearby Grand Central Terminal.

The design is inspired by old New York glamour and borrows textures and character of the gilded age, using rich velvets, leathers, a vaulted tile ceiling, stone mosaic floor patterns, 90 foot long custom millwork bar, and scattered moments of lighting that bring an intimacy to the space while speaking subtly to the idea of historic grandeur. Rich details and architectural finishes as well as extensively sourced, vintage furniture pieces, have made this new bar a instant success and neighborhood hot spot.



PERCH

This space is a 2-story private amenity library / lounge with mezzanine, on the 5th and 6th office floor, overlooking the atrium lobby. Demoing the previous stepped conference rooms and replacing them with 26 foot high glass facade cladding, 40 over-sized walnut coffers at the ceiling, and two floor to ceiling bookshelves at either end. We turned this floating glass box into a place of inspiration for thinkers; the playful use of material & plants and the curation of both vintage & new objects / art prices creates a dreamy, yet function atmosphere to work or lounge in.



COMMONS

The largest tenant amenity space, which also has a unique condition of a terrace overlooking Grand Central, was programmed to be a s cafe/cafeteria/eatery space, that can also be rented as an event space, which we call "The Commons". The raw space was previously used an office and brought a number of construction challenges. We aimed to create a functional space for high traffic, without turning this great space into another corporate cafeteria.

The materials and furniture are reminiscent of french bistro meets tech office which we translated to a number of details in the space - with antiqued mirrors, ribbed millwork paneling, modern lighting, and a funky underlying tile pattern.



TERRACE

The terrace was previously inaccessible, used only as a maintenance terrace, even though it has an amazing view of Grand Central and great light. Though the terrace is a narrow space, its direct and visual connection to the indoor eatery and Commons gives it a more spacious feel as an extension to a larger space with unparalleled views of Grand Central. By replacing pieces of the facade, extensively coordinating new landscape, repaving and furnishing the space to feel like a bistro set above the city, and by strategically placing entry points from multiple high traffic amenity spaces, the terrace has been given new life as an integral part to the larger campus that celebrates NYC.



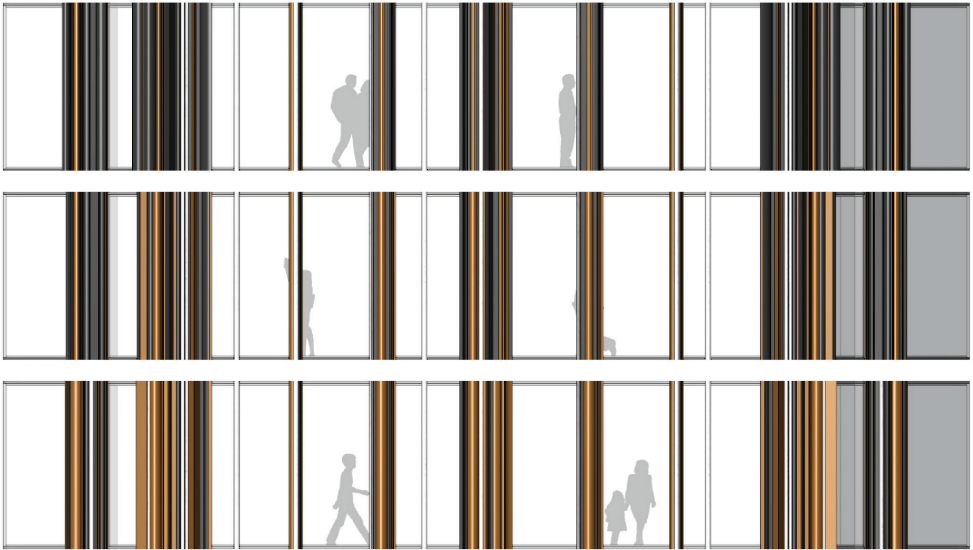
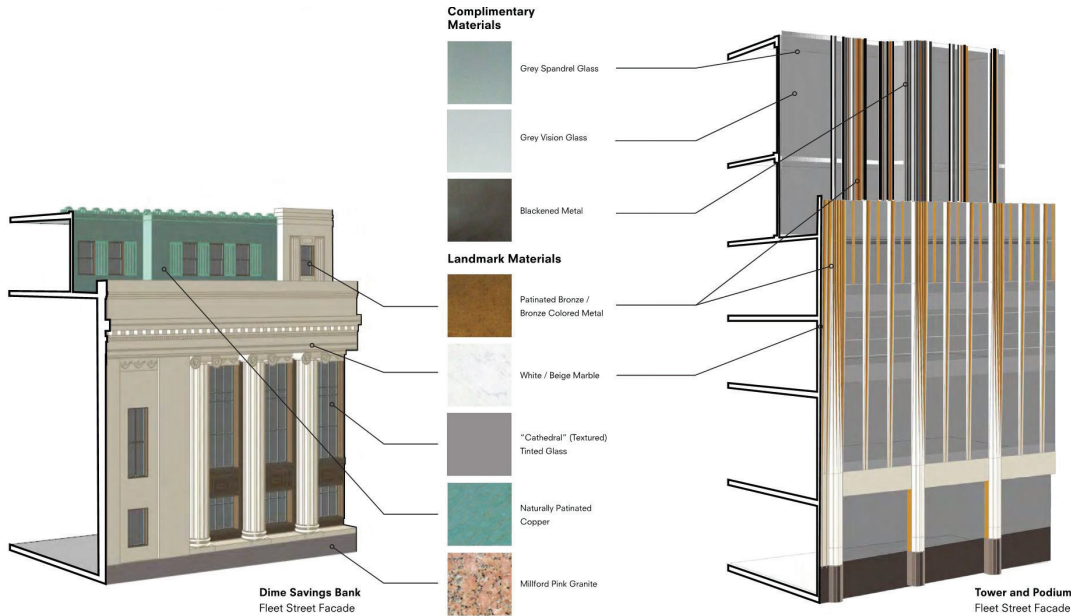
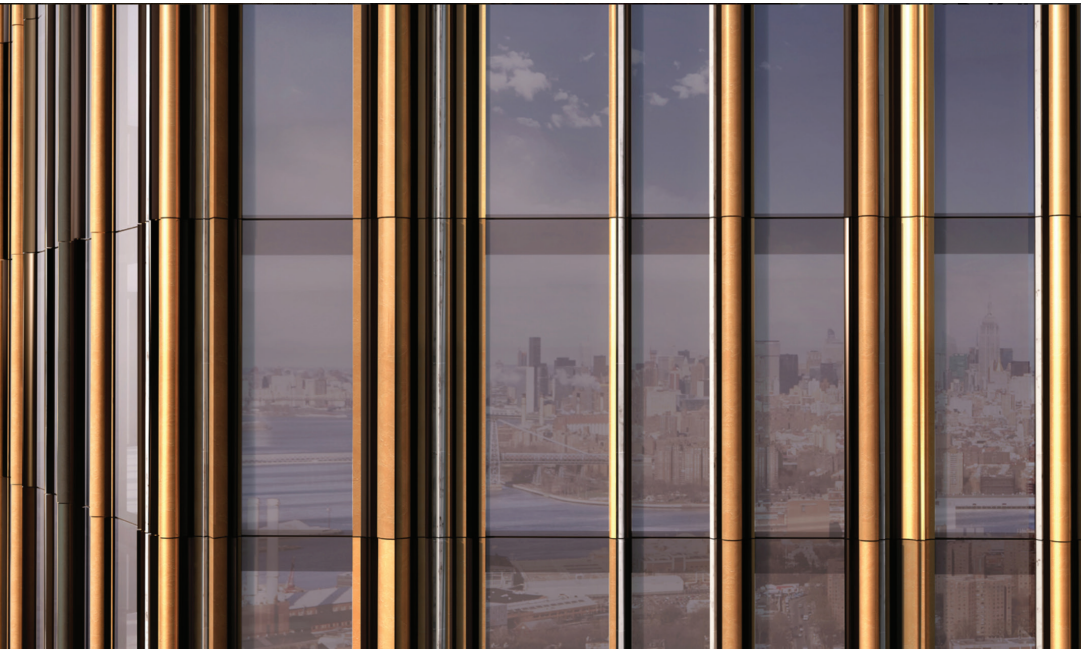
At 1,066 feet tall and 735,000 square feet, the apartment building at 9 Dekalb Avenue is set to be the tallest tower in Brooklyn. At the base, the historic Brooklyn Dime Savings Bank will be restored and repurposed for commercial use, and serve as a connection to the new ground-up residential tower at the north end of the site. The residential tower, complete with incredible amenities and extensive retail at the ground floor, will define the Brooklyn skyline, rivaling the height and character of Manhattan towers across the river.

Taking indication from context of it's downtown Brooklyn lot, the team at SHoP designed the unique tower into a hexagon, with setbacks rotating up the tower to both allow for views and to emphasize the amazing verticality. The rich material palette, ranging from bronze to marble, both references the historical bank and evokes a sense of timelessness. The over 500 rental and condo units in the building, were meticulously laid out to work with this hexagonal shape and capitalize on views out in every direction.

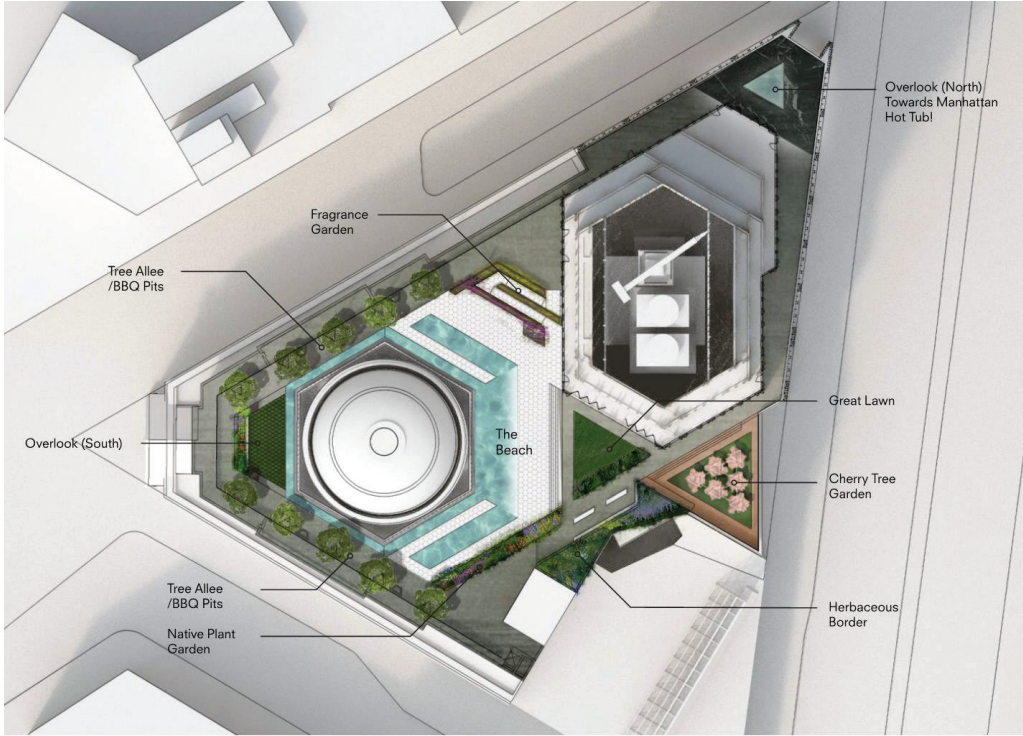
As part of this project team, I helped complete construction documentation-mitigating new residential and commercial design with preservation of existing landmarked structures to create a cohesive, modern design for the tallest building in Brooklyn.



**FACADE SYSTEM** - The facade will be clad in dark glass and shaped bronze flutes, a nod to the historic nature of the site. The materials of the new tower facade compliment the landmark Dime Savings Bank at the base, evoking a sense of timelessness throughout. The varied flute shapes bring life and texture to the facade while the darkening of the material helps to emphasize the verticality of the tower.



**MODERN MEETS LANDMARK** - The Dime Savings Bank, a New York Landmarked building on the interior and exterior, helped inform the design of the new tower without constraining it. The bank is celebrated throughout the new construction, informing the complimentary materials, interlocking with the unique hexagonal shape, and even encircled by a roof top pool around the main dome. While merging the old with new presented many design and construction challenges, the impact of this unique and historic site is captured and expanded in the new residential tower.



SHoP designed the New Office Annex (NOX) for the United States Embassy in Bangkok, Thailand as part of a multi-phase rejuvenation of an existing 11-acre site and replacement of an old office building. The irregularly stacked office building, blends the rich context of the city with a modern, functional design.

As well as responding to cultural influences, the building design responds to the environment, creating a lush site filled with trees and storm-water ponds while elevating the main building 3 feet above ground due to the areas tendency to flood. The tiered glass volumes of the building massing are covered with slats, to help shade the building and mitigate the hot and humid climate of Bangkok. The protruding volumes at the lower levels of the building shift outward, providing coverage at the ground floor, and lush garden terraces at the upper floors. Common areas are distributed throughout the lower level of the building, reflecting the community nature of neighborhoods in Thailand and offering views out to the landscaped site and surrounding tree canopies, while the upper levels house efficient office floors with unparalleled views of the city.

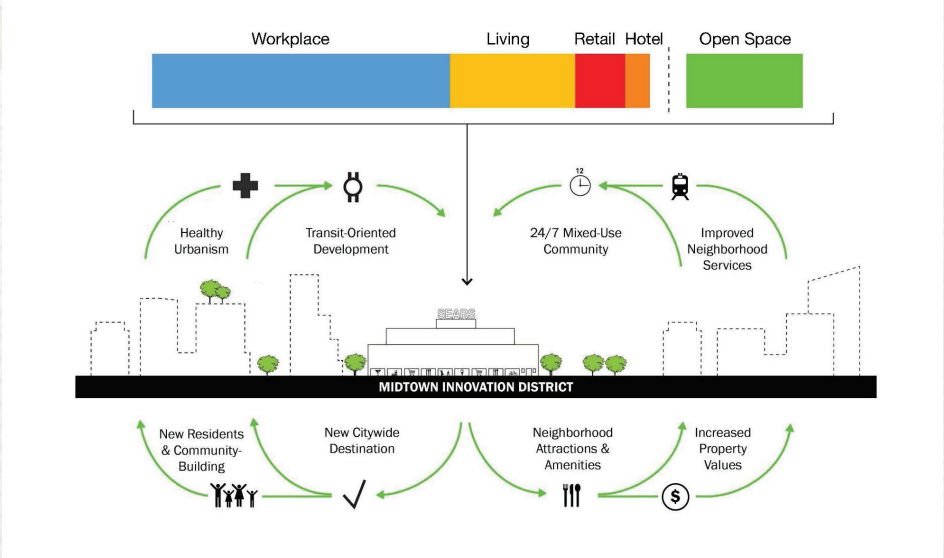
As part of the design team at SHoP, I created concept presentations, 3D imagery, millwork details, and detail documentation for the new office building, establishing modern design rooted in the complex culture and context of Bangkok. The team navigated complicated government requirements and confidentiality without compromising the design integrity or goals of the project.



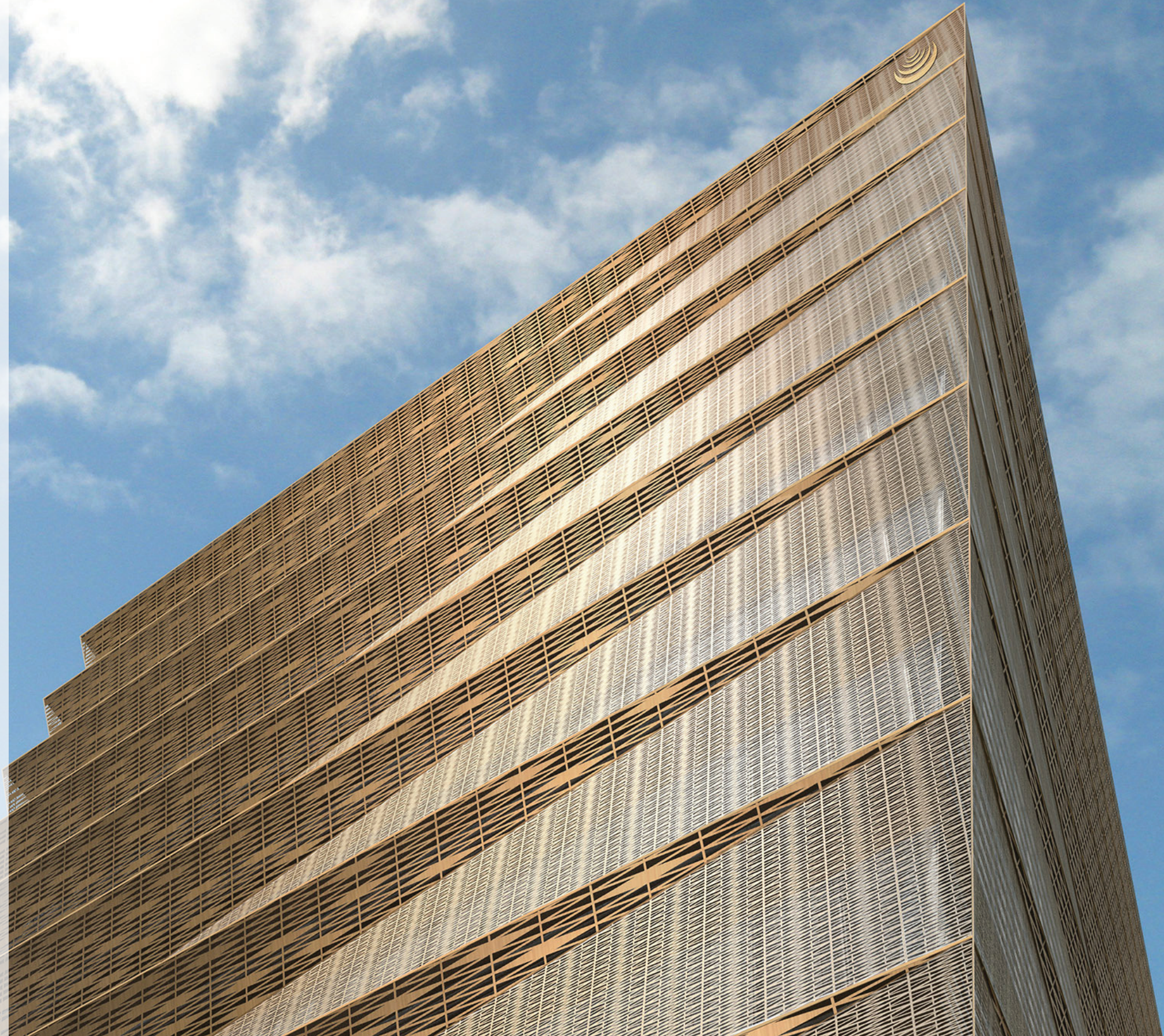
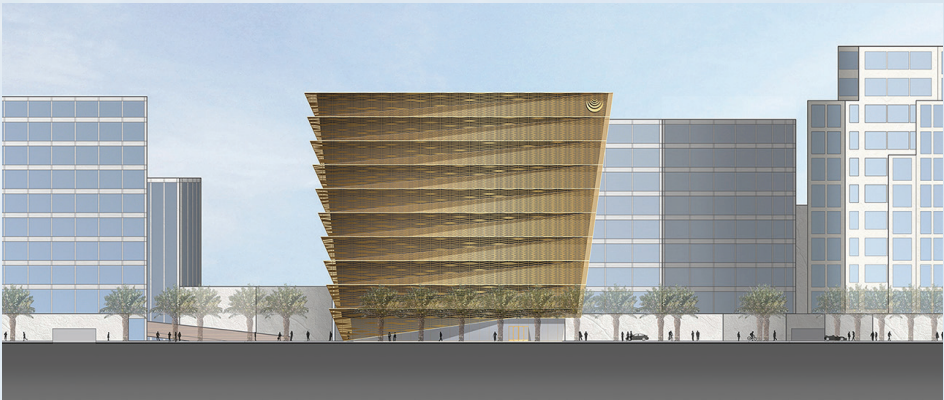
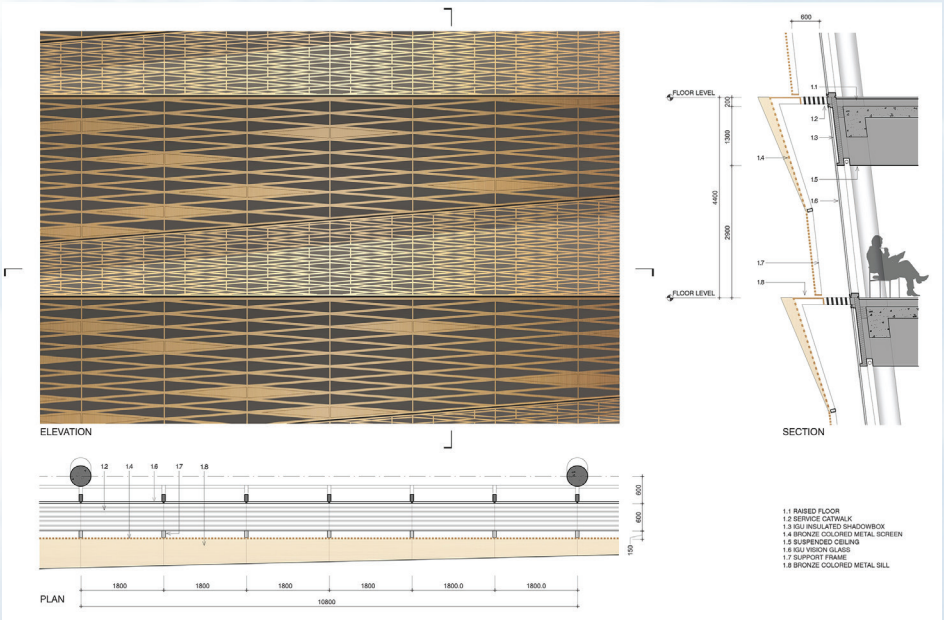
In collaboration with the Rice Management Company, SHoP has designed a masterplan and flagship building for a new center of technology and business in the Midtown District of Houston. The Midtown Innovation Hub, to be housed in the old Sears building, capitalizes on the buildings historical significance while connecting technology, business, and communities through design.

Upon completion, this building (phase one of a larger master plan) will be 270,000 square feet with a supporting 21,000 square foot landscaped plaza between the building and parking garage. Focusing on the surrounding neighborhoods, the building reflects a human scale of design through physical transparency and openness as well as collaboration with the community.

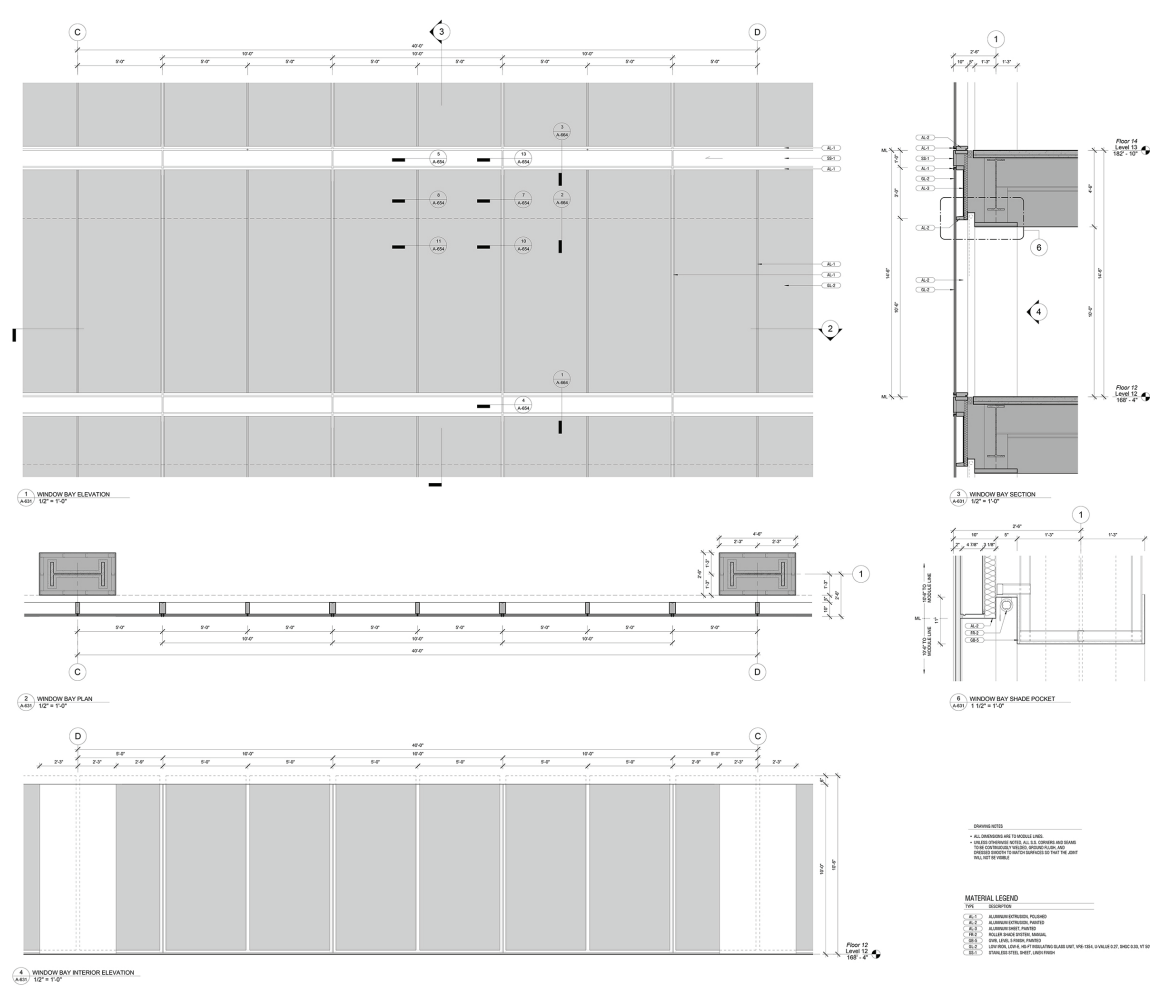
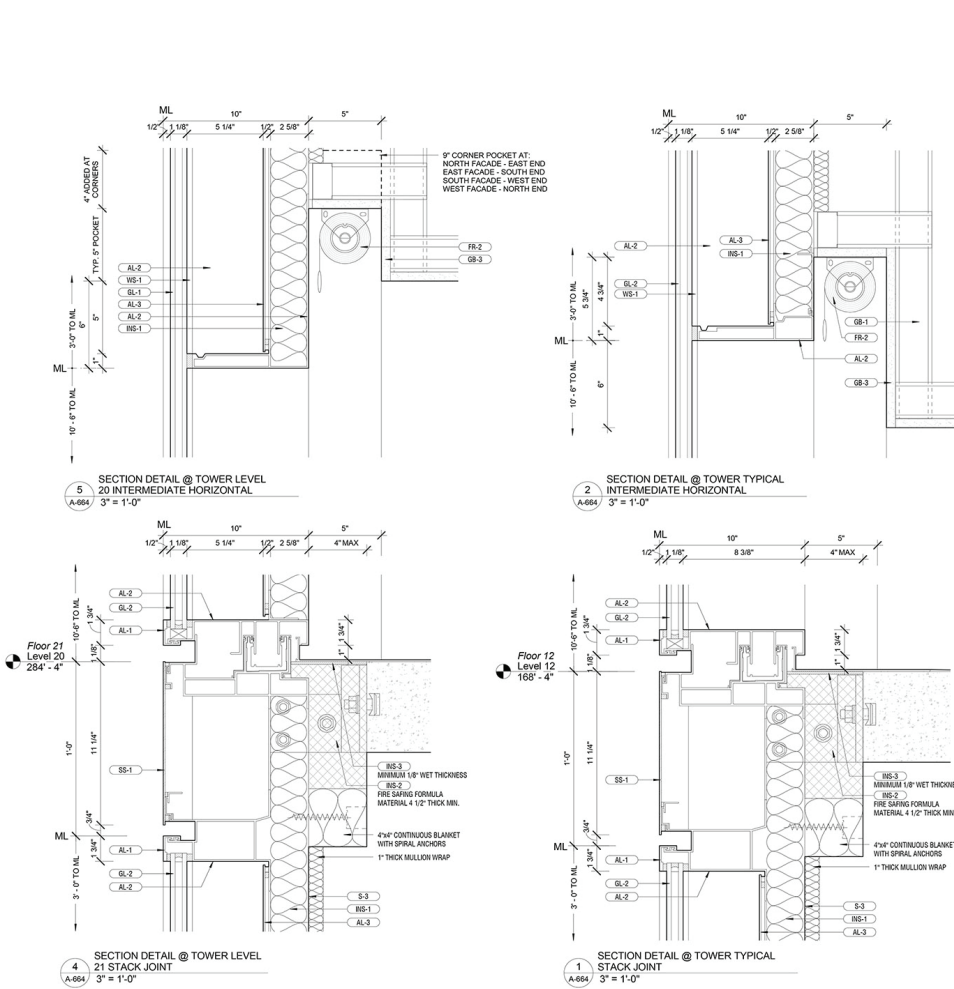
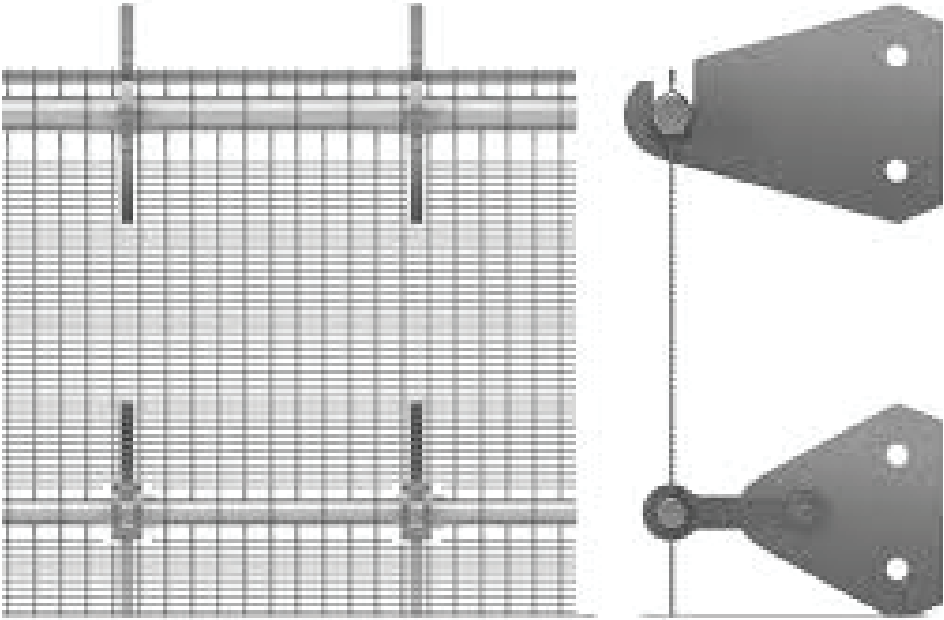
A lightwell stretching from the top floor down to the basement level, will serve not only to bring natural light into the building, but create a iconic, central feature that fosters community and collaboration within the building for some of the brightest minds and innovative companies in technology. This light is a driving force in the project and aims to be a catalyst of transformation for the entire district.



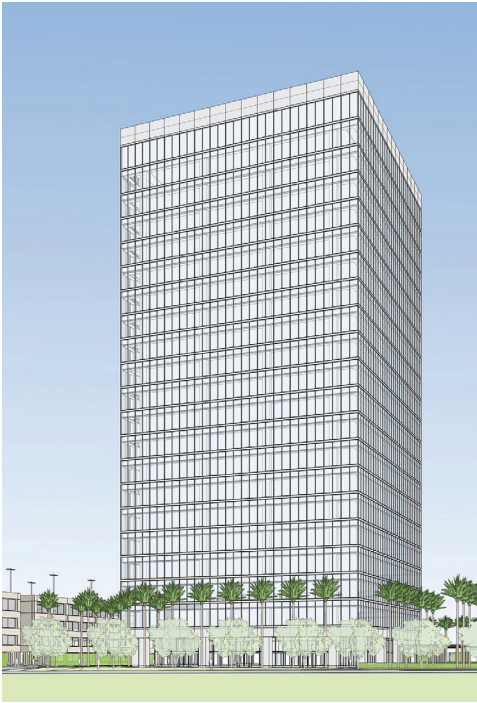
Pei Cobb Freed and Partners competed for the design of a bank headquarters in Qatar. The goal of this project was to create an efficient, sustainable, and iconic form to expand with the client's quickly growing employee and customer base. It takes on a form that incorporates traditional Islamic art and architecture while remaining progressively bold, a jewel in this new desert development. The proposed structure is a series of nested volumes with faces angling outwards, sheathed in a bronze-colored perforated metal screen. This nine-story array of interlocking triangular surfaces forms a dynamic facade that displays carefully integrated Islamic patterned screens, shielding the sloped glass curtain wall from Doha's intense sun and heat while still allowing daylight into workspaces. My main responsibility in the project involved designing and detailing the building envelope and screen.



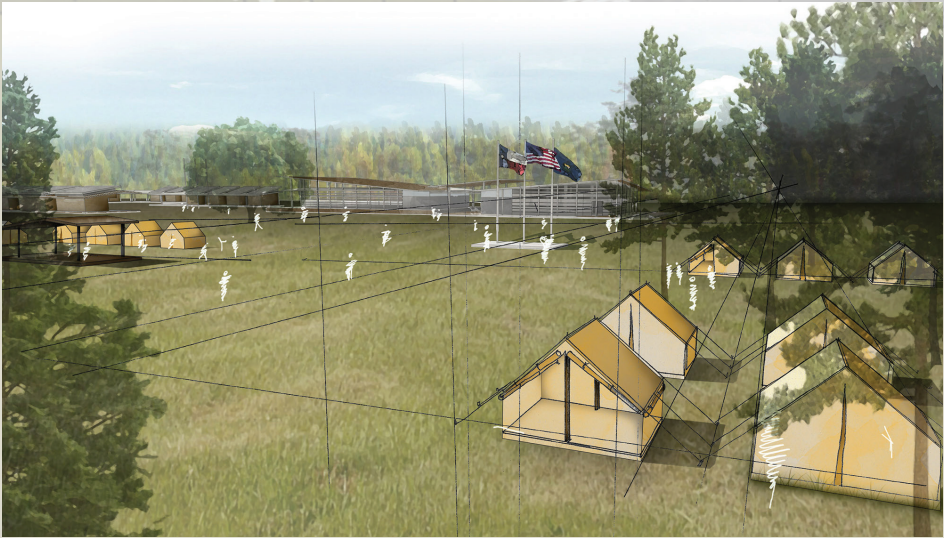
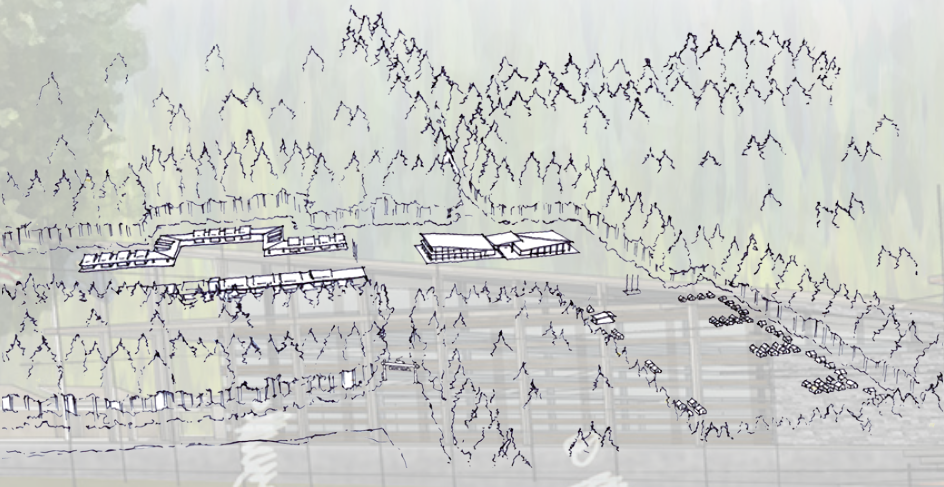
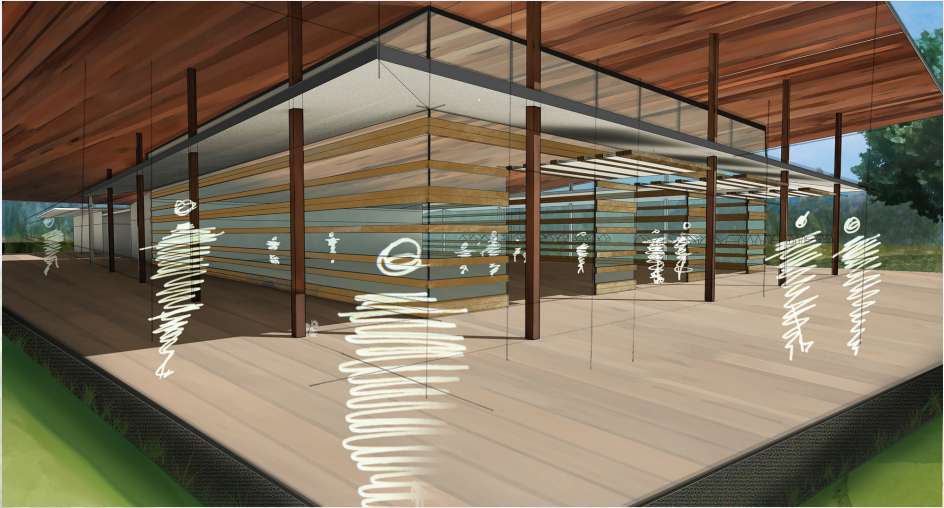
Pei Cobb Freed and Partners became involved with The Irvine Company almost 8 years ago, after winning a competition held by the developer in San Diego. Since then, the firm has maintained this relationship and completed a number of successful projects with them. The latest Irvine Company project is Spectrum Center, an office and retail development in Orange County, California. The firm's scope in the project includes two office buildings, 200 and 400 Spectrum Center Drive, and their coordinating parking structures. My involvement, mainly in 200 and 400 Spectrum Center, followed the projects from concept through construction administration and completion.



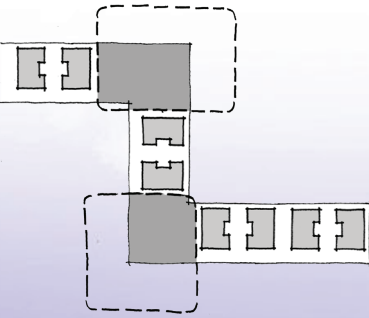
CONCEPT »» CONSTRUCTION



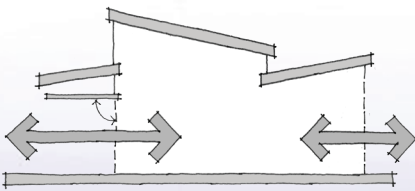
During this summer internship, I was not only fully integrated in the firm's studios working on various Houston-based projects, but I also worked with a small team on an 8-week concept and schematic design charrette for pro-bono client. We developed a full master plan and building design for a new campus for the Boy Scouts of America based in the Houston area. During this time, we were responsible for project design as well as compiling information, client meetings, and presentation of the project at various stages. Our final design emphasizes some of the core values of the client as well as a few bold architectural moves: sustainability, connecting with people, connecting with nature, and framing views.



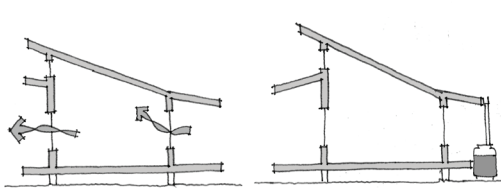
CONNECTING WITH PEOPLE



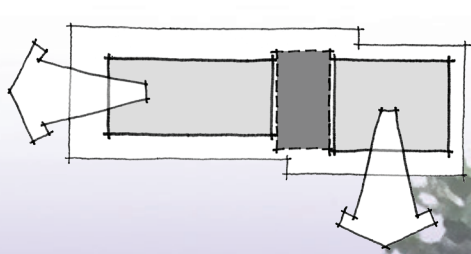
CONNECTING WITH NATURE



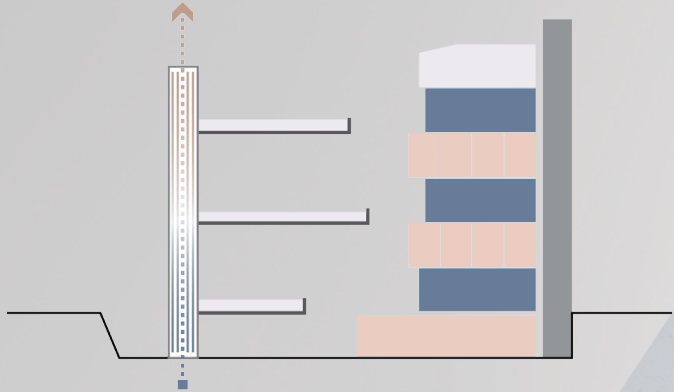
SUSTAINABILITY



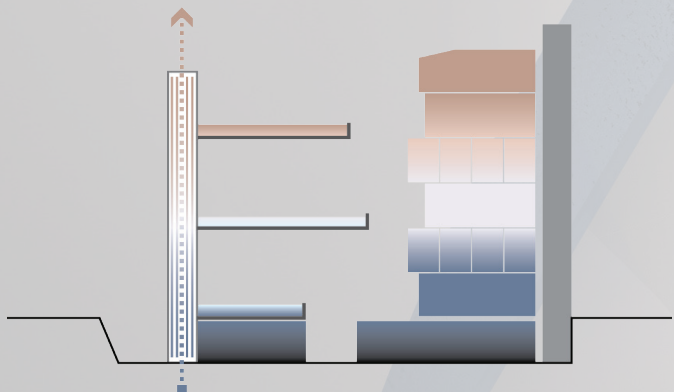
FRAMING VIEWS



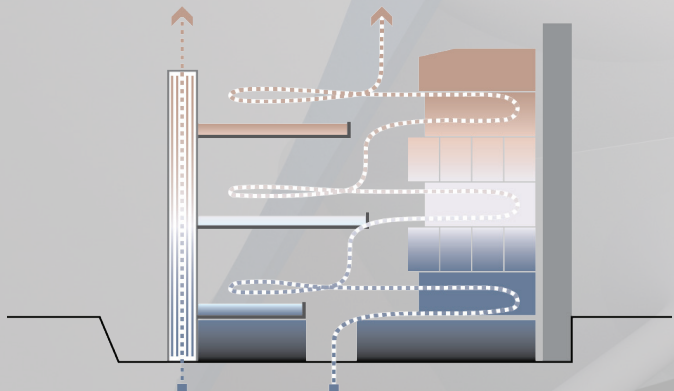
In this partner project to create a hydrotherapy treatment center and spa, we created space of escape and program variation while also capitalizing on energy efficiency. The fluid curves are evocative of the program type, the atrium design is referential of communal appeal of historical baths, the simplistic material palette reflects a sense of purity and serenity that resonates through the building, and the taught object creates a presence in the urban fabric of New York City. In creating a hydrotherapy treatment center and spa, we created space of escape and program variation while also capitalizing energy efficiency. Organizing the diverse set of programs and room types into a matrix of wet vs. dry and relative size, showed three distinct types: wet large open space, dry medium flexible space, and dry small compartmentalized space. Then organizing the program in section to interact vertically, created both a programmatic and spatial mix. To create energy efficiency, mixing of program types, and an accelerated solar chimney, the program was organized from cold to hot, both for the wet and dry programs. By mixing program and types, users experience new parts of the building each time.



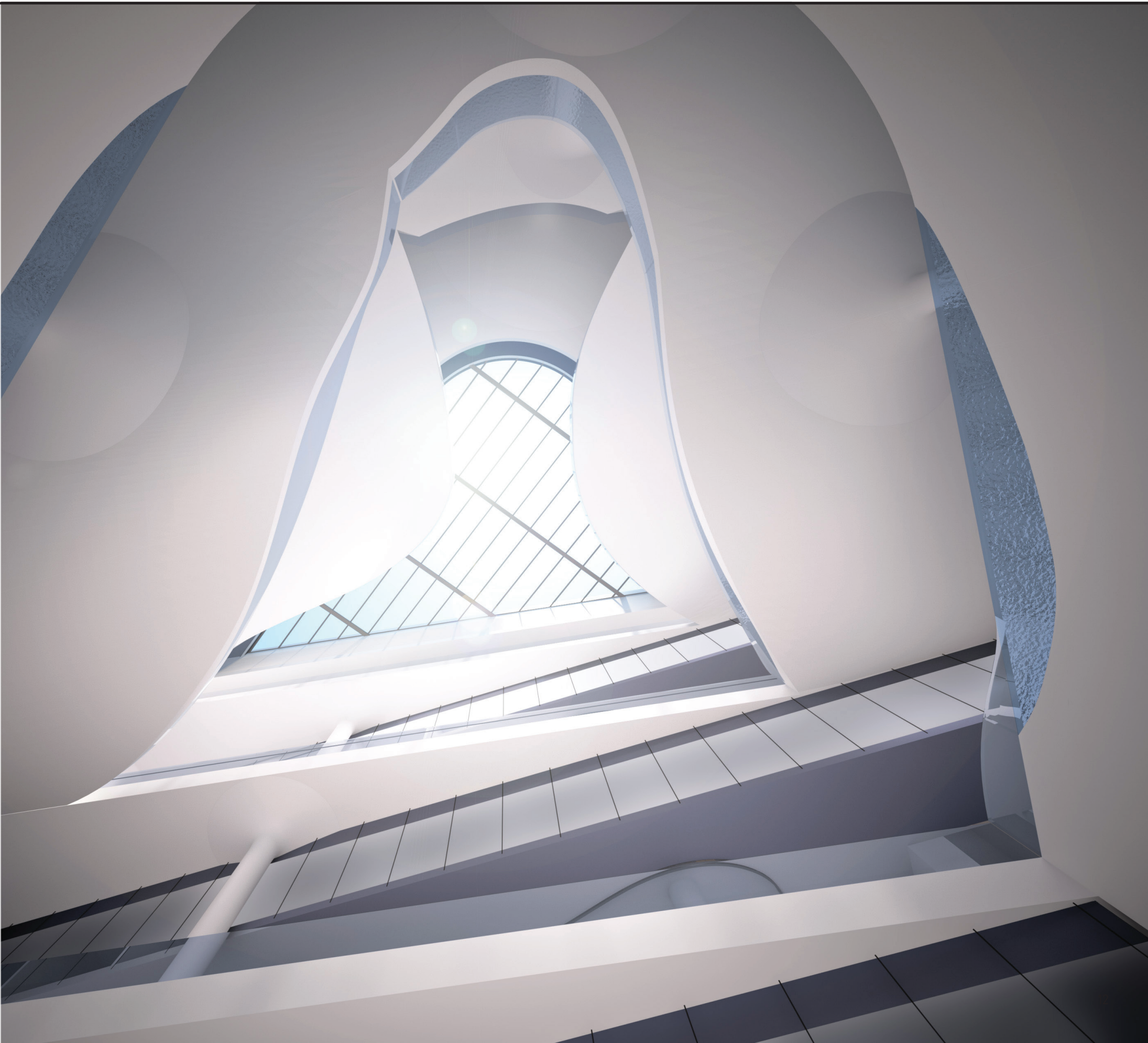
Organize programs based on wet, dry, and relative size

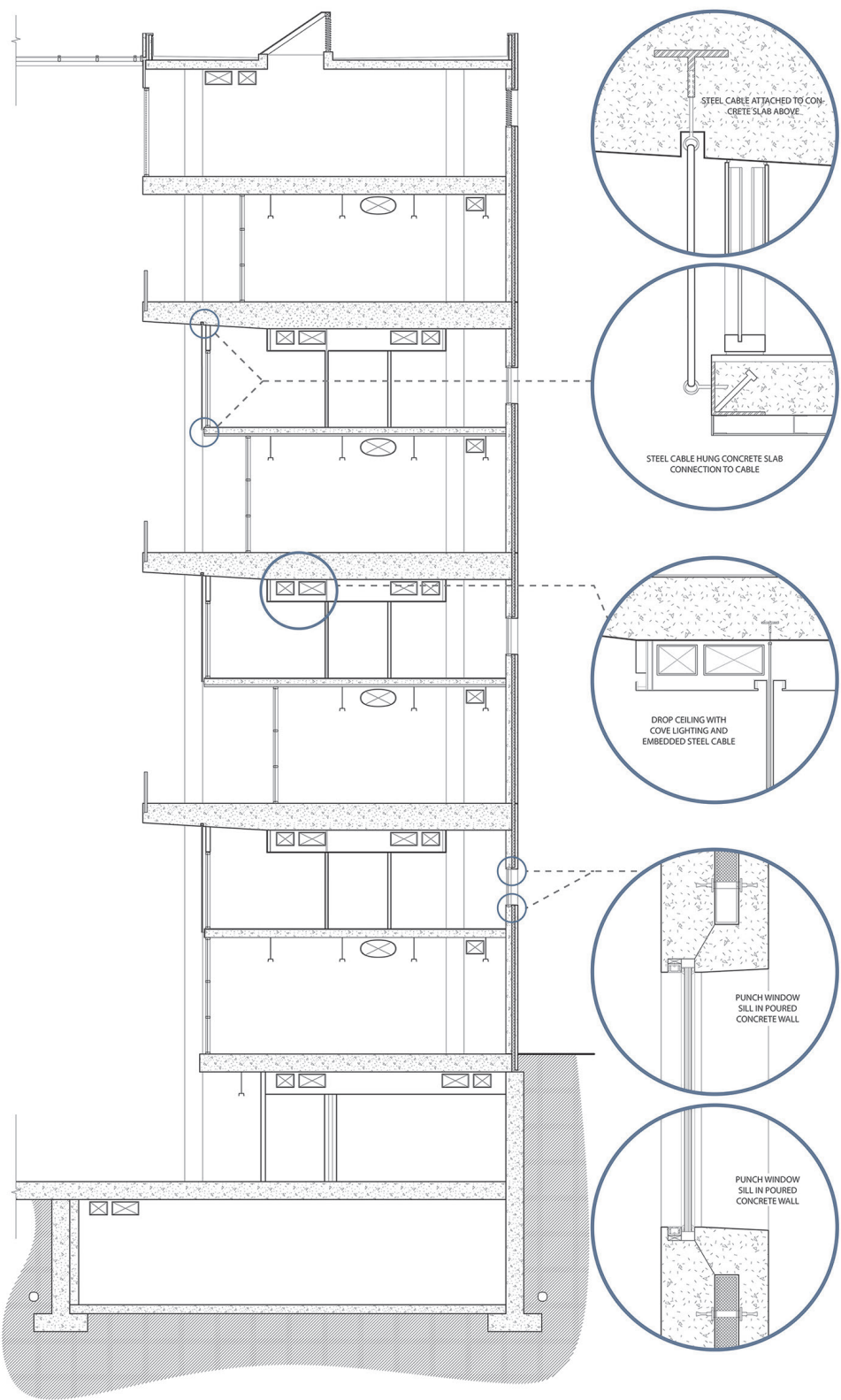
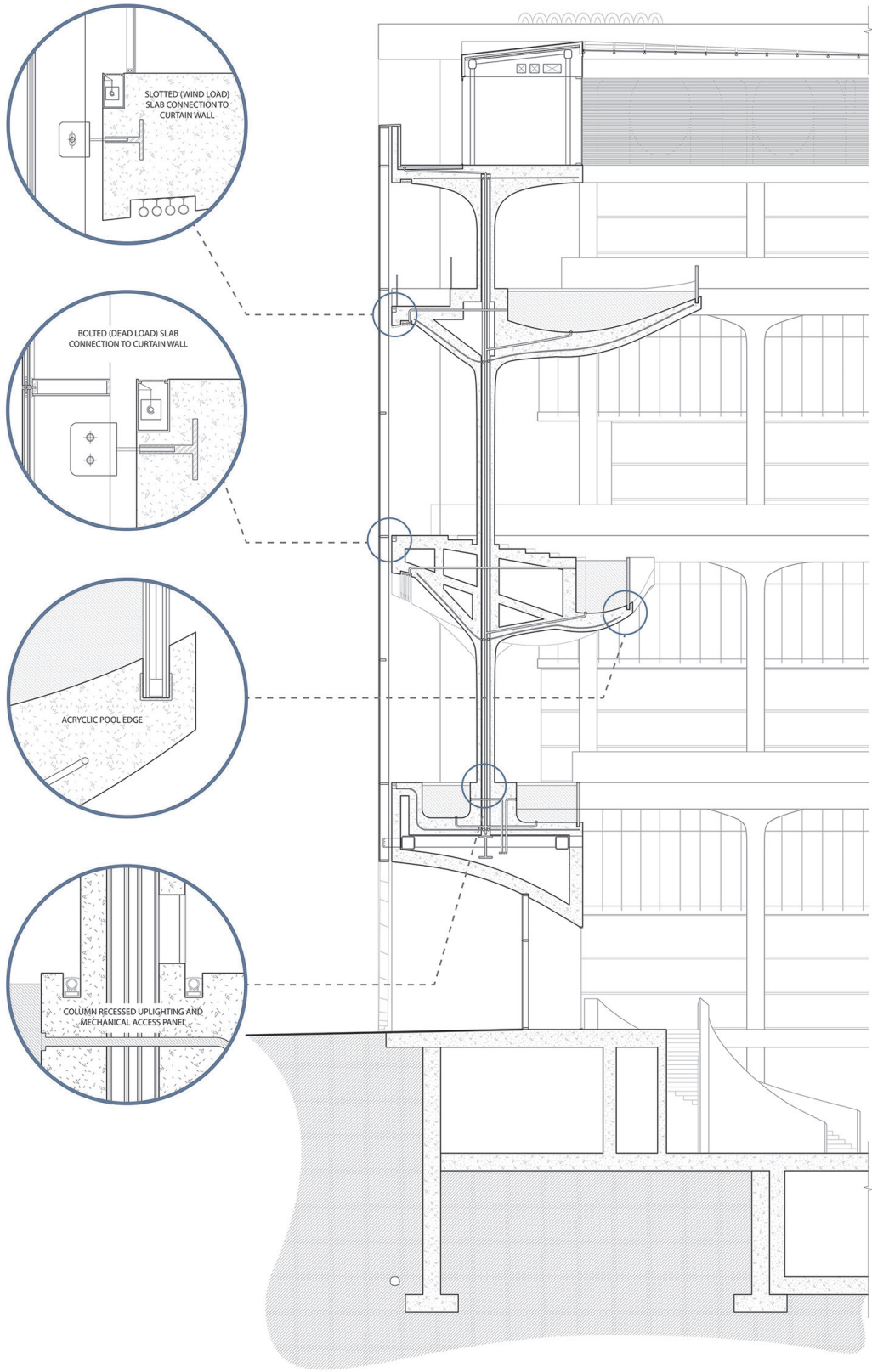


Arrange pools and programs from cold to hot to create HVAC efficiency

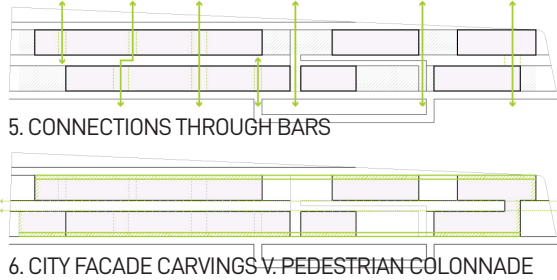
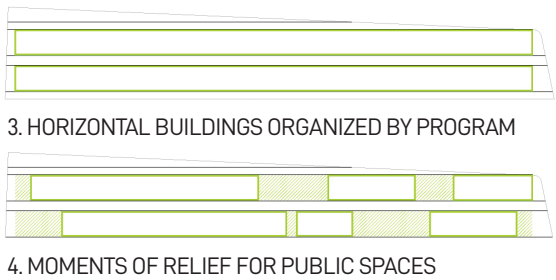
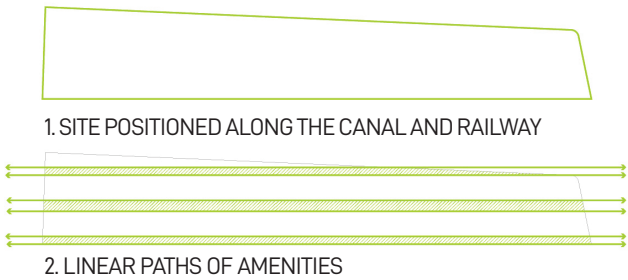


Use organization to create accelerated solar chimney and programmatic relationships



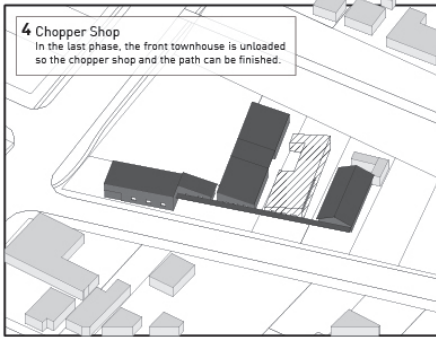
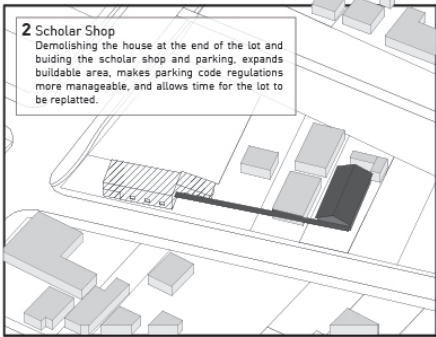
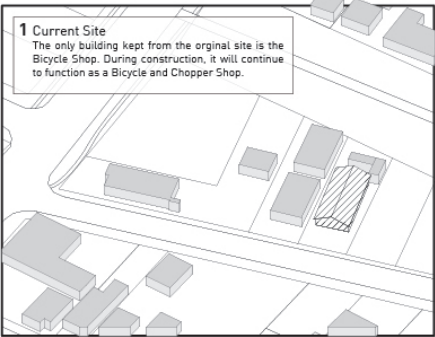


Paris' larger frame of historical context implies that infrastructure gets pushed further and further from the city center to be replaced by cultural and housing facilities that bring surrounding suburbs into the fabric of Paris. This project aims to set up a framework of development on the site, as well as an anchor for future development, through a system of linear density using natural amenities as a tool to revitalize and organize emerging neighborhoods, expanding the cross section of the site further from the canal and into new land on the precipice of change.



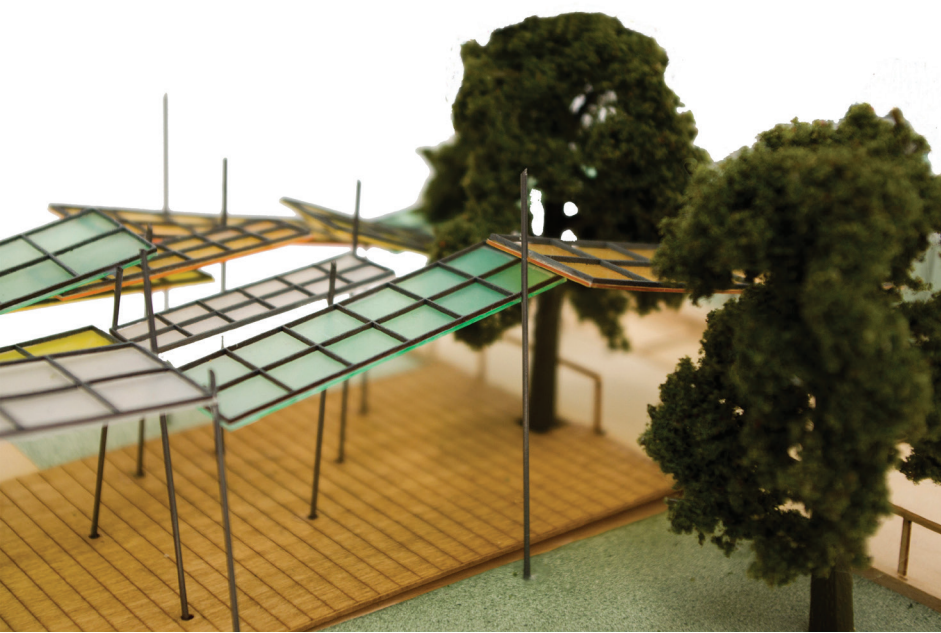
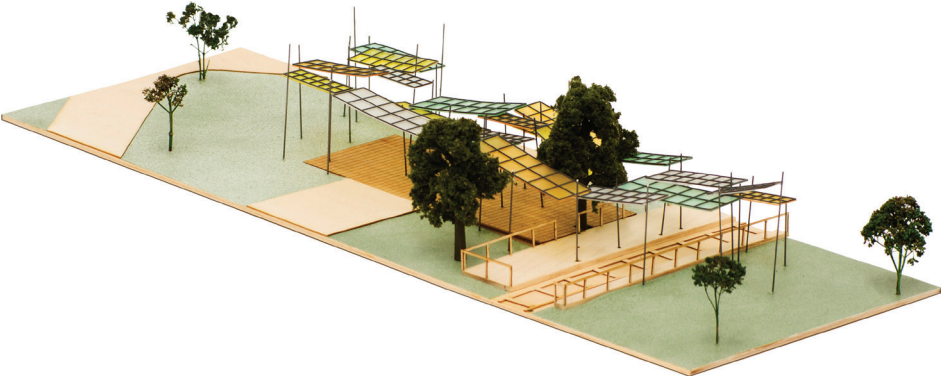
WORKSHOP HOUSTON // FALL 2012

Through the Rice Building Workshop, I worked with a team on a new design for Workshop Houston, a volunteer based after-school activity campus for 3rd ward children in Houston. The final design uses chasing phased schemes, efficient uses of space, and a campus-like atmosphere and presence. The design separates activity spaces, but then features a central boulevard that connects to a surrounding bike path to showcase the main activity- the bike shop. The main access buildings and administrative offices line the front of the campus, creating a presence on the busy road while also providing safe interior circulation for the children.



HERMANN PARK CENTENNIAL PAVILION // FALL 2013

In 2013, Rice Building Workshop was chosen among a handful of other schools to design a pavilion in Hermann Park for their Centennial Celebration. The design my team and I created emulates the ephemeral canopy of Hermann Park and Rice University through a series of translucent panels referencing leaf patterning. The interplay between panels, column structure, and light creates a dappling effect that transitions throughout the day as the sun moves. Additionally, the site I chose allows the canopy to interact with the park path, zoo train station, and park train, creating an interactive pavilion that can be experienced by diverse groups of people within the park.



RICE POP-UP GALLERIES // FALL 2015

Rice Building Workshop collaborated with the Rice Center for Energy and Environmental Research in the Human Sciences (CENHS) to provide a temporary 'pop-up' venue with commissioned installations for Houston FotoFest 2016 'Art and Energy'. Using three donated container boxes complete with off-grid photo-voltaic systems, my team designed, permitted, and began installation and implementation of three galleries at a prominent location on the Rice campus. During this time, I was responsible for the city permitting set, producing the construction documents for existing features as well as newly designed installation additions.

