

# DANYALI

<https://danyali.com/>  
info@danyali.com  
+1 (978) 884-1932

## EDUCATION SYRACUSE UNIVERSITY | School of Architecture

2019 Bachelor of Architecture - Dean's List - Cum Laude  
International Study: Switzerland, France, Italy, Germany | Spring 2017 London, England | Fall 2017 - Florence, Italy

2018 SUNY - College of Environmental Science & Forestry | Sustainable Construction  
Minor in Sustainable Construction Management with a focus in Sustainable Energy Systems and Materials

2013/2011 CORNELL UNIVERSITY & ROGER WILLIAMS UNIVERSITY | Summer College in Architecture  
Accredited Architectural Summer College

## EXPERIENCE DESIGNER | Self-Employed

*Current* Design covering a wide range of projects including set design and photography. Clients include: Brooklinen, Coming Soon NY, and Cold Picnic.

*2019-Current* EDITORIAL CONSULTANT | Syracuse University School of Architecture  
Consultant for the School of Architecture, tasks include managing, composing, and organizing the annual Thesis Publication. Additionally, offered critiques, edits, and feedback to thesis students to produce a book representing the graduating class.

2018 ARCHITECTURAL INTERN | Woods Bagot Architects | New York City, NY  
Worked directly for Principal David Brown and Designer Kathleen Cayetano on the Competition Team  
Revised drawings, assembled models, and developed designs for over 12 projects both domestic and international

2019 SHADOWSHIP PARTICIPANT | Skidmore, Owings, and Merrill Architects | San Francisco, CA  
Selected participant for a week-long shadowship at SOM - San Francisco.

2019 UNDERGRADUATE TEACHING ASSISTANT | Professor Ted Brown | Syracuse University  
Selected Undergraduate TA for ARC 181 - Representation, a core first-year class demonstrating fundamental drawing skills

2015 SOCIAL MEDIA MANAGER | Syracuse University School of Architecture  
Developed aesthetics, coordinated, and produced content for the SoA's social media platforms: @syr\_arch

2014-15 DESIGN & CONSTRUCTION TEAM | CEMEX Concrete + APTUM Architecture  
POP-UP Bench - Winner in Biel/Bienne Switzerland for the design of a park bench at CEMEX Headquarters  
Thinness Pavilion - Constructed concrete pavilion for exhibition  
Tower of Tiles - Created rubber urethane molds, poured concrete tiles, and assembled tower for exhibition

## AFFILIATIONS NCARB - AXP Enrolled

## HONORS THESIS PRIZE JURY 2019

Nomintated to present in the 2019 Thesis Prize Jury, an event showcasing the top thesis projects of the graduating class

## BOSTON GLOBE AWARD

4 Silver Key Awards (Drawing, Painting, Photography), 4 Honorable Mention Awards (Painting, Sculpture)

## SKILLS DIGITAL

Rhinoceros (V-ray, Grasshopper, DIVA) Adobe CC (Photoshop, Illustrator, InDesign), AutoCAD, Revit, SketchUp, Photography

## ANALOGUE + FABRICATION

Precision Model Building, Hand Drafting, Laser Cutter, 3D Printing, Woodshop, Vacuum Former, Concrete, Wood, Foam, HIPs

## LANGUAGES ENGLISH (Primary), MANDARIN-CHINESE (Secondary)

# DANYALI

<https://danyali.com/>  
info@danyali.com  
+1 (978) 884 - 1932

## REFERENCES

### **Michael Speaks**

Dean - SU School of Architecture  
maspeaks@syr.edu | +1 (315) 443-0790

### **Mark Linder**

Employer & Professor – Syracuse University  
mdlinder@syr.edu | +1 (315) 443-5097

### **David Brown**

Principal – Woods Bagot Architects  
David.Brown@woodsbagot.com | +1 (646) 756-3316

**D A N Y A   L I**

*info@danyali.com*

*+1 (978) 884-1932*

*www.danyali.com*

The following selected works reflect my current interests in spatial design and object analysis. The projects are organized according to scale, varying from physical space to conceptual drawings. I have a strong focus on the conversation between projects and people through different mediums and narratives.

*Enjoy!*



## CONTENTS

Undergraduate Thesis	1
Firehouse	13
Fashion Studio	19
Brooklinen	25
Cold Picnic Dioramas	31
Miscellaneous	37



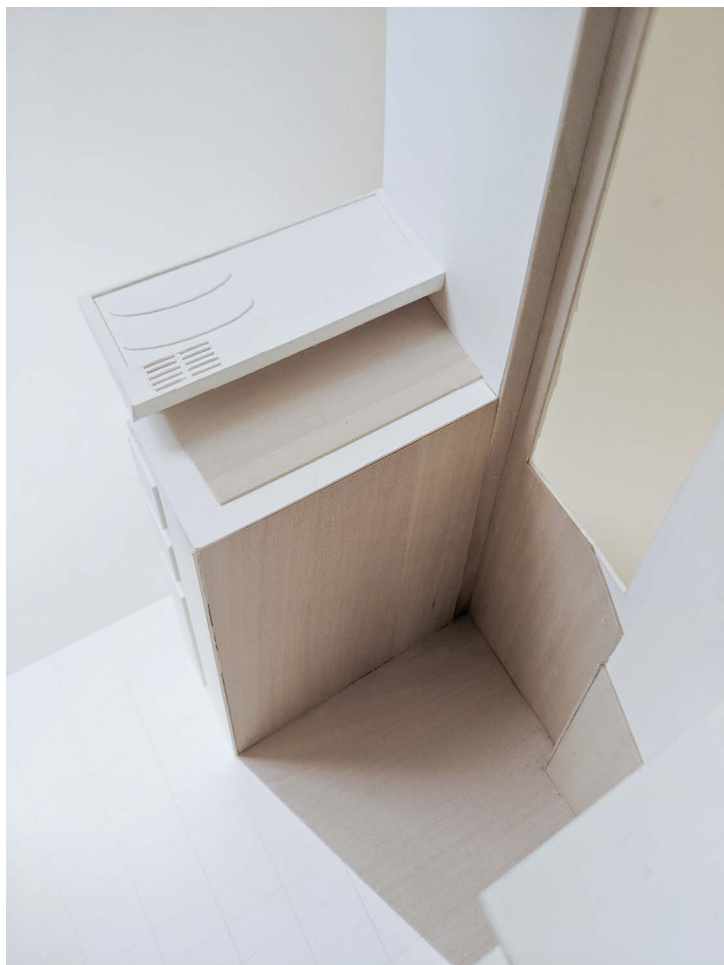


## THE DENUDED IMAGE

*Replica and Representation*

This project aims to create a conversation between a photograph and its viewer through adding back the third dimension. It is not a proposal on how architects should design space, but a model for observation and study on how to create new ways of seeing.

The Denuded Image aims to transmit information crucial to individuals beyond the photograph. It is a study of space, perspective, and human perception. The photograph exposes the tension between the diorama and the viewer, creating a new way of understanding and visualizing a photograph.



*Scale 1:4*





Scale





Scale



# DIORAMA INSTRUCTION MANUAL

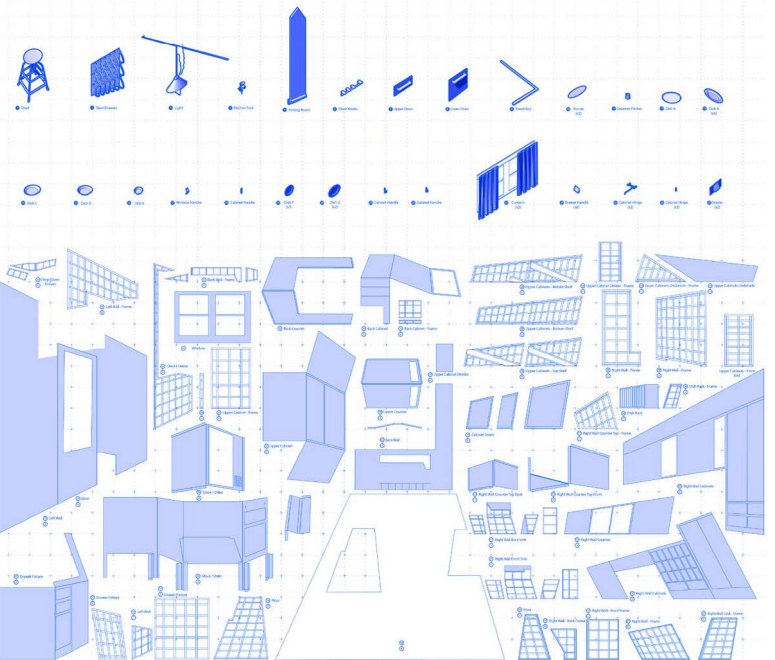
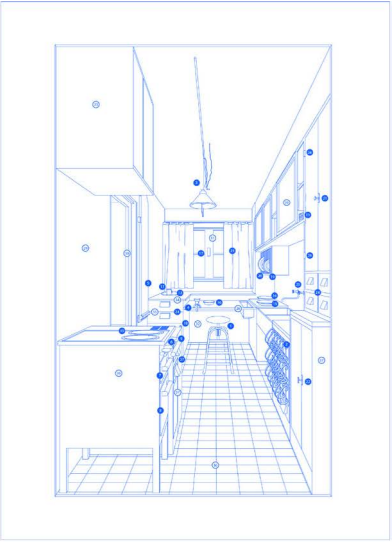
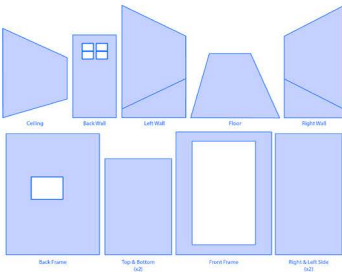
The following pieces were made in order to create the 1:2 diorama. The floor, ceiling, walls, and outer box were all CNC Milled to match the complex angles. All blue labeled numbers are 3D white resin prints, and white labeled numbers are made of museum board (image) and basswood (the in-visible). The model took about one month to make.

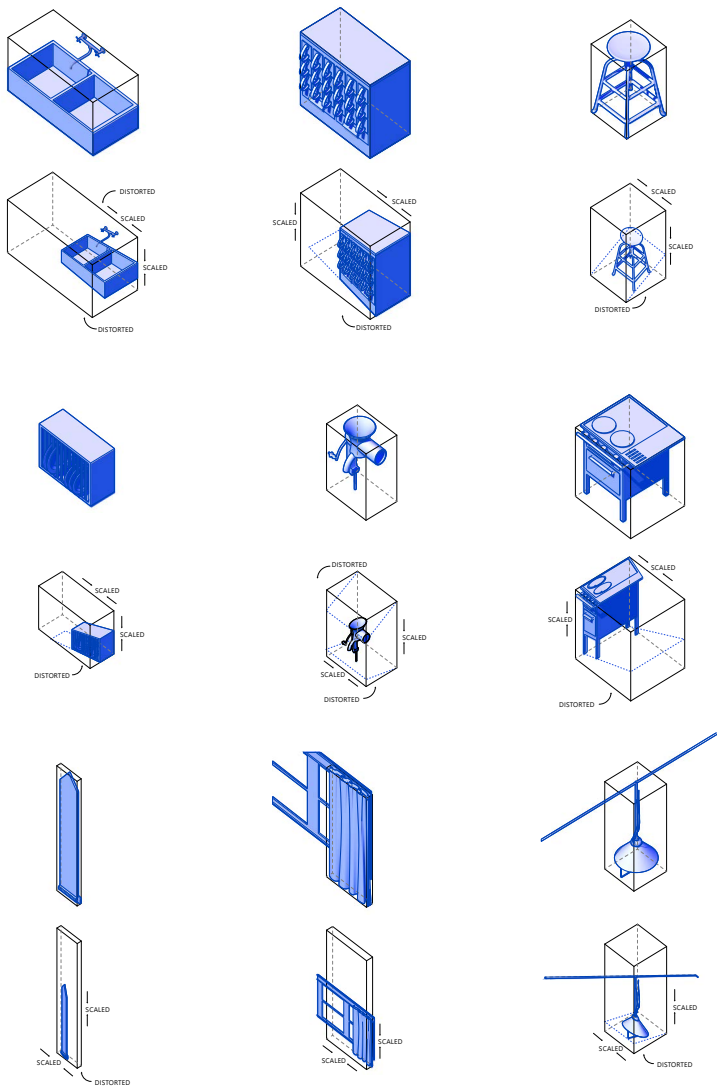
Materials used:  
 (54) 1/4"x1/4"x24" Basswood  
 (72) 3/16"x1/16"x24" Basswood  
 (35) 1/8"x1/8"x24" Basswood  
 (5) Sheets of 32"x40" MB 4-Ply  
 (21) Sheets of 32"x48" MB 1-Ply  
 and 3D printed furniture.

Tools used:  
 -Olla Knife 9mm and 18mm Extra Strength Blades  
 -Easy Cutter Ultimate  
 -Measuring Tape  
 -Masking Tape  
 -Superglue  
 -Spray Adhesive

Be sure to take a picture of The After Image and tag @thedenudedimage.

- 3D print
- Basswood
- Museum Board
- MB / Basswood Piece





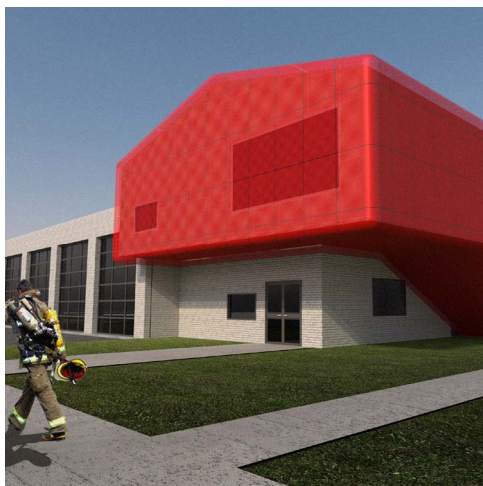
NOTE: The furniture items are not relative in scale in this drawing - this drawing highlights the scale, rotation, and distortion each object experienced in order to create its diorama version. Diorama pieces are relative to its original.



*Scale 1:2*







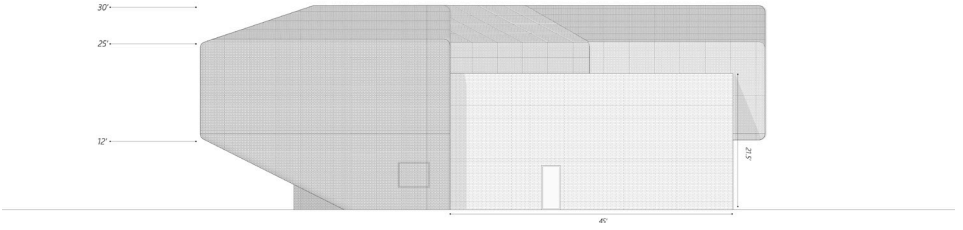
## FIREHOUSE 99

*Syracuse, NY 13210*

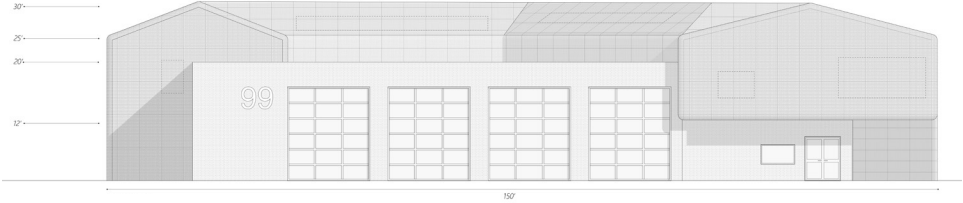
This firehouse aims to bring together old and new - using a traditional brick for the Work (Apparatus Bay + Support) and red, perforated metal panels for the Living (private facilities for fire fighters), this modern fire station aims to create a comfortable second home for the Syracuse fire fighters.

The work and live are separated for the benefit of the fire fighters, connected with three conventional fire poles for direct accessibility to the apparatus bay. The project prioritizes efficient circulation between the living areas and fire fighter support areas, creating a fluid relationship between the first and second floors. With two sets of stairs at both ends, fire fighters are able to ascend to the living quarters easily, both to the dormitories and lounge.

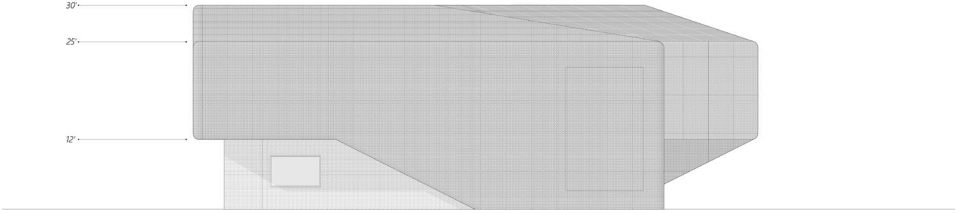
Design collaboration with Anita Karimu



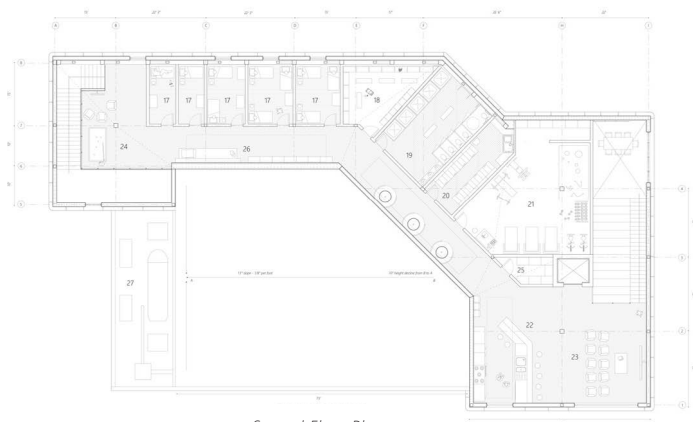
West Elevation



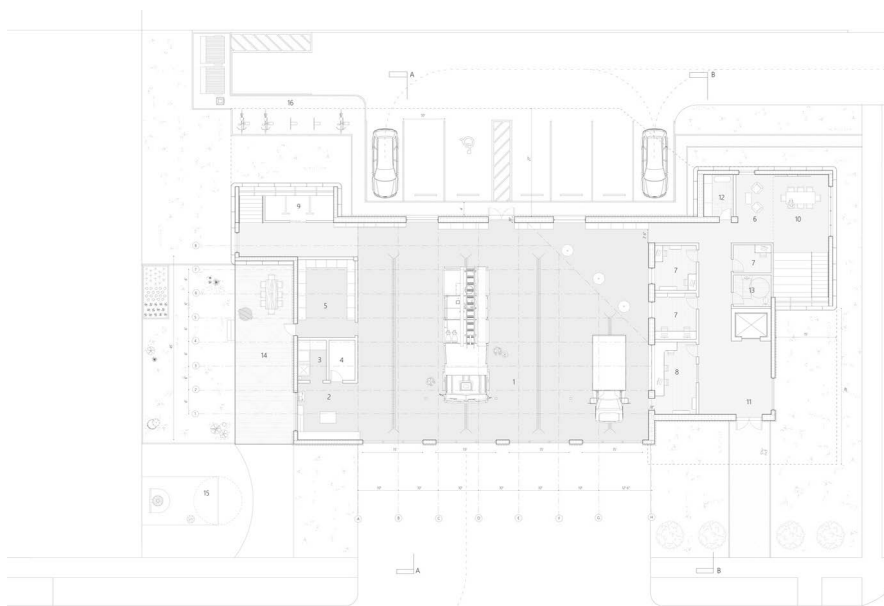
South Elevation



East Elevation



Second Floor Plan



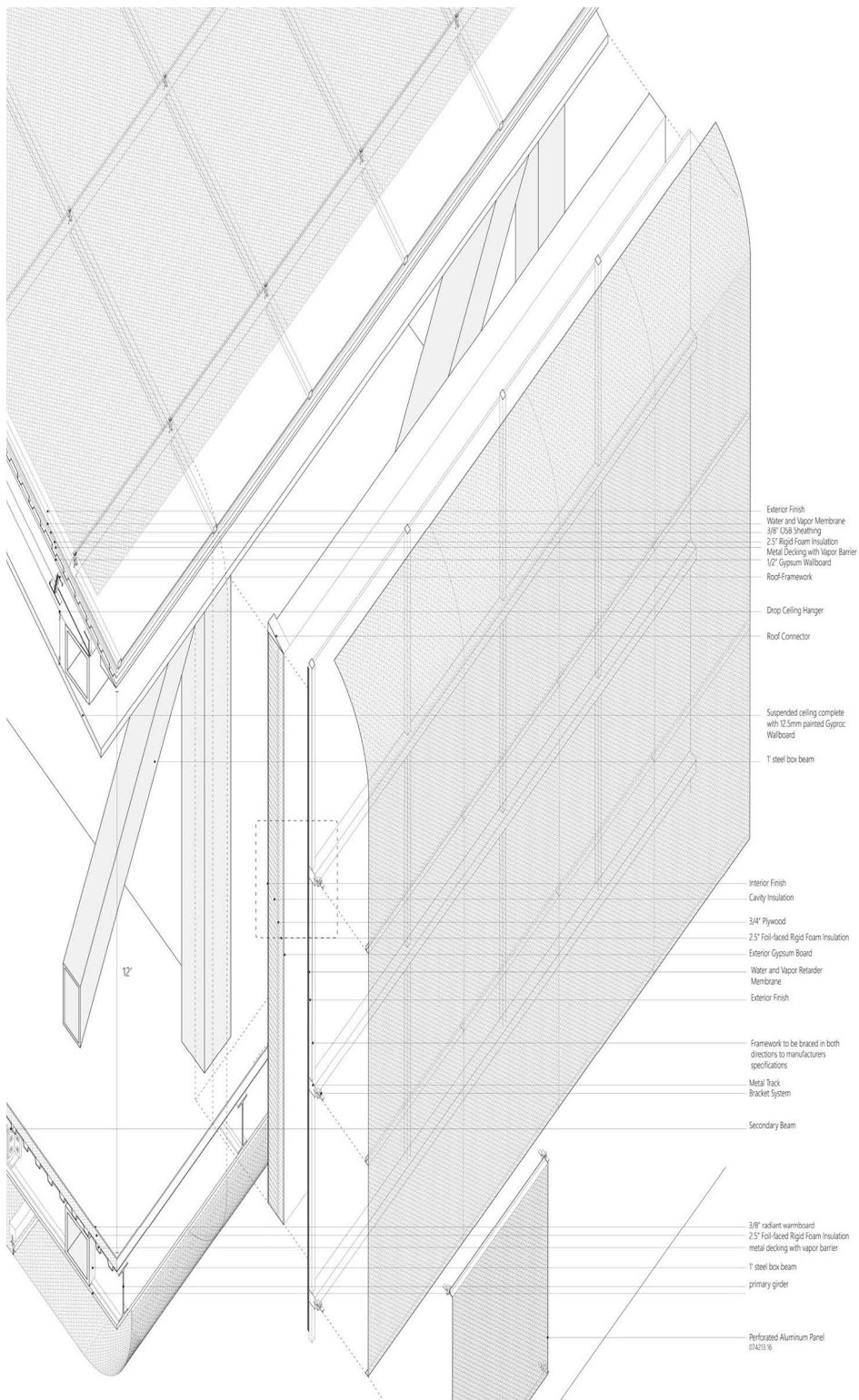
Ground Floor Plan

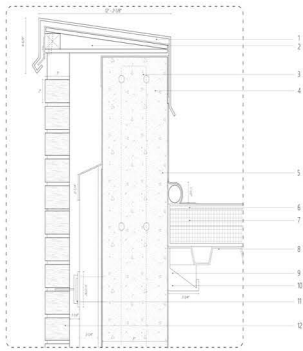
ROOM

1. Apparatus
2. Repair Shop
3. Decontamination
4. Storage
5. Personal Protection / Equipment Storage
6. Meeting Room
7. Admin
8. Command Center
9. Drying

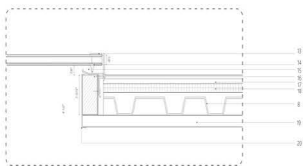
10. Training
11. Entrance
12. Mechanical / Electrical Systems
13. Restroom
14. Patio
15. Recreational Space
16. Bike Racks
17. Dorms
18. Locker Room
19. Bathroom

20. Laundry
21. Gym
22. Kitchen
23. Day Room
24. Recreational Space
25. Storage
26. Library / Maps
27. Mechanical Systems

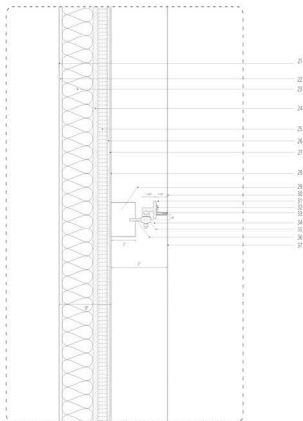




APPARATUS - PARAPET



SKYLIGHT

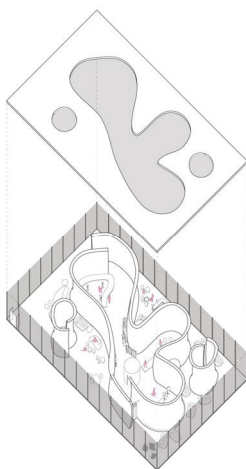


ENVELOPE SYSTEM

- |  |   |
|--|---|
| 1. Parapet Flashing  | 21. Interior Finish                       |
| 2. Tapered Rigid Insulation  | 22. 1/2" Gypsum Wallboard                 |
| 3. 8" Reinforced Concrete Wall   | 23. Cavity Insulation                     |
| 4. Fully Adhered Water Control Membrane  | 24. 3/4" plywood                          |
| 5. Backer Rod  | 25. 2.5" Foil-faced Rigid Foam Insulation |
| 6. Fully Adhered Roof Membrane   | 26. Exterior Gypsum Board                 |
| 7. (2) 1.5" Layers of Rigid Insulation   | 27. Water / Vapor Retarder Membrane       |
| 8. Metal Deck  | 28. Exterior Finish                       |
| 9. Bridging Truss  | 29. Metal Framework                       |
| 10. Metal Truss Hanger   | 30. Aluminum Perforated Panel 074213.16"  |
| 11. Dovetail Jointed Hanger  | (top)                                     |
| 12. Brick Veneer   | 31. Bracket                               |
| 13. Exterior Aluminum Retaining Angle  | 32. Fastener                              |
| 14. Insulated Tempered Glass   | 34. 7/16" S.S. Bolt + Nut                 |
| 15. Santoprene Gasket  | 35. 1-1/4" Bronze Belleville Washer       |
| 16. Bracket with Rubber Draft Seal, Condensation Weep Hole and Rigid Vinyl Thermal Break | 36. 1/4" Shaped Painted Steel Tab         |
| 17. Roof Membrane  | 37. Aluminum Perforated Panel 074213.16"  |
| 18. 2.5" Rigid Insulation  | (bottom)                                  |
| 19. Roof Support Track   |   |
| 20. Curb and Flashing  |   |

*Exploded Axonometric & Detailed Wall Sections*  
*These drawings were 3D modeled and drawn manually in Rhino.*





## FASHION STUDIO

*Hyde Park - London, England*

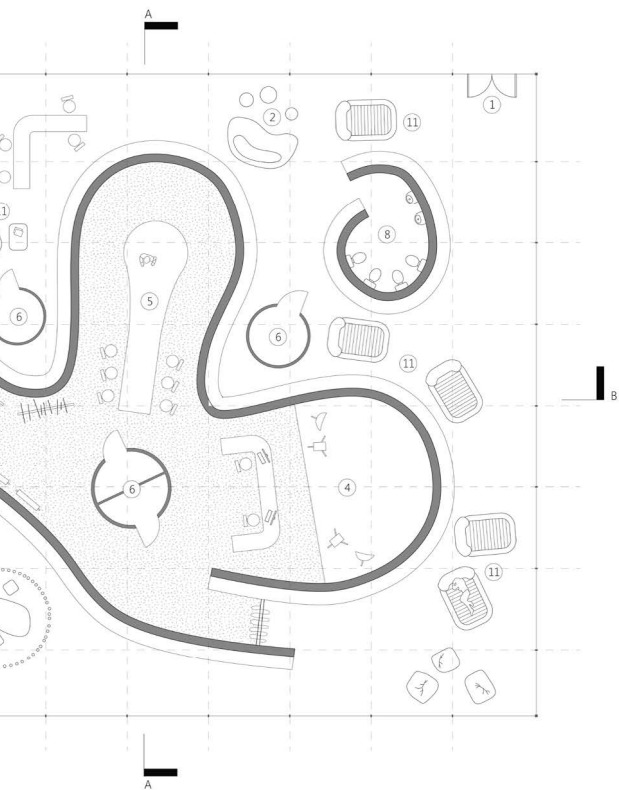
This fashion studio provides a work-live environment for fashion designers, models, photographers, and modistes seeking a space that will offer a collaborative atmosphere with various workshops geared toward their specific media of art. This studio redefines private space, by enclosing the work areas to give priority to the work space. The open living space and flexibility of furniture gives the users the freedom to live with way they choose by being able to manipulate their own living areas within the larger open space.

The contrasting interior and exterior relationship between the main, concrete form and the interstitial fluid space around it highlights the immiscible relationship between work and live.

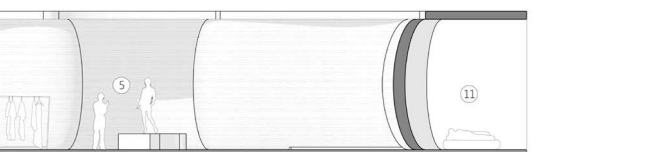
Design collaboration with Brandon Zirzow + John Carino



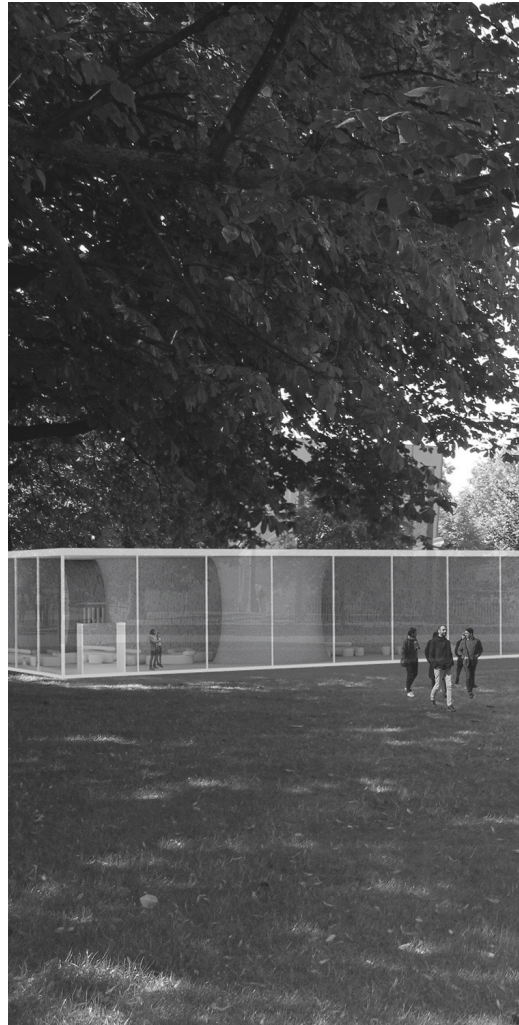
- 
- A diagram of a large hall. On the left, a large, curved structure is labeled with a circled '2'. In the center, a stage area is labeled with a circled '3'. The stage features a large screen, a podium, and several chairs. An audience of stylized figures is seated in the foreground, facing the stage.



GROUND FLOOR PLAN

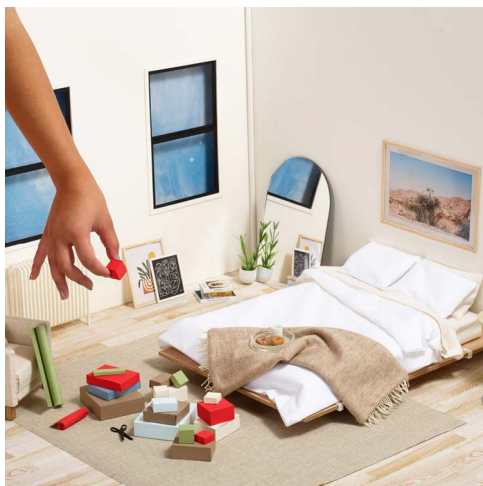


SECTION BB









## BROOKLINEN

*2020 Holiday Campaign*

Diorama models done for Brooklinen's 2020 Holiday collection - work includes overall design, construction, and hand modeling.

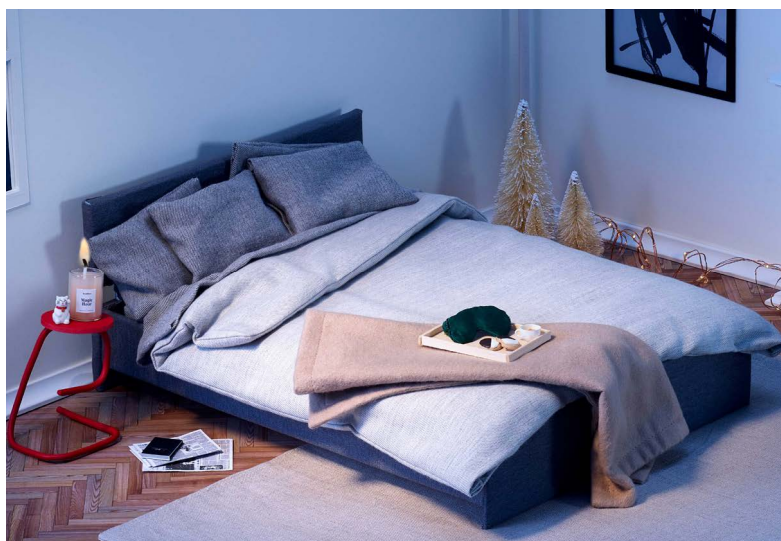
Four spaces were produced for this diorama series: two bedrooms and two bathrooms, each featuring Brooklinen's products for the 2020 Holiday season. Each model was designed in collaboration with Brooklinen's Creative Director. The primary deliverables for this project were the long ads on the NYC Subway, but were also featured street level on digital boards and bus stops.

Scale: 1:12

Photographed by Gregroy Reid













## COLD PICNIC

*Life at the Bottom of the World*

Diorama models done for Cold Picnic's Life at the Bottom of the World Collection - work includes fabrication of the primary room elements, decorated with sourced, found or crafted objects by Cold Picnic.

Five domestic spaces were produced for this diorama series: kitchen, living room, bathroom, bedroom, and study. Each diorama was placed into a smaller, closed space within the respective rooms. The kitchen in a cabinet, the living room on the bookshelf, the bathroom under the sink, the bedroom in a dresser drawer, and the study in an antique wooden desk. Some of the furniture pieces were custom made by myself for these spaces (grid kitchen, couches, bookshelves, etc.) while other pieces were sourced online.

Scale 1:24

Photographed by Jonathan Hokklo

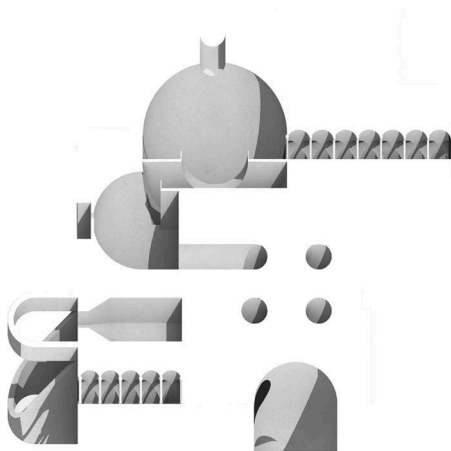










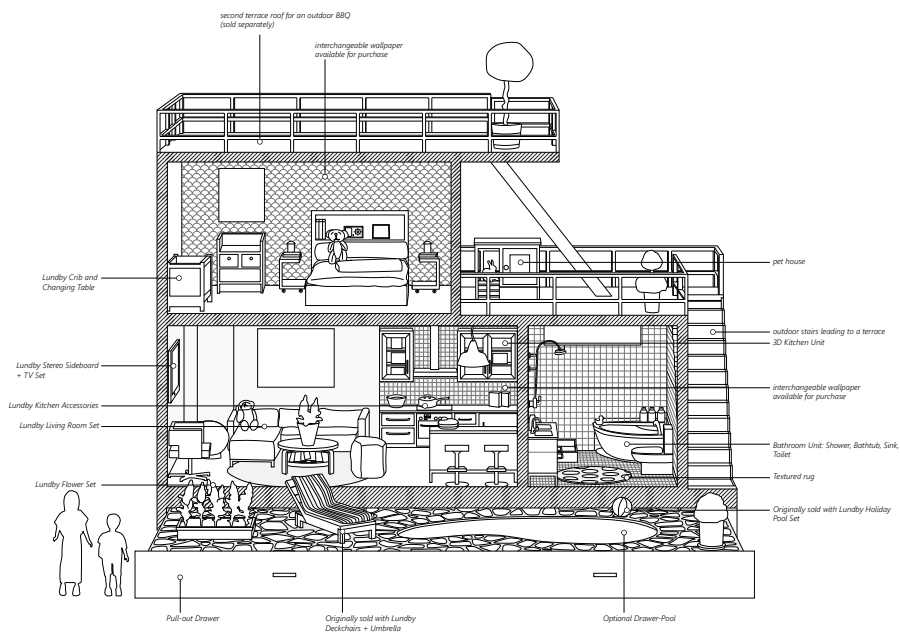


## MISCELLANEOUS

*A collection of models, images, and other things*

The following work includes academic work done with peers, professional work done for Woods Bagot, and personal work done for fun.

The works include installations, conceptual imagery, and creative representation. In addition to construction, I have a strong interest in photography - the work can be found at the website at the end of this book.

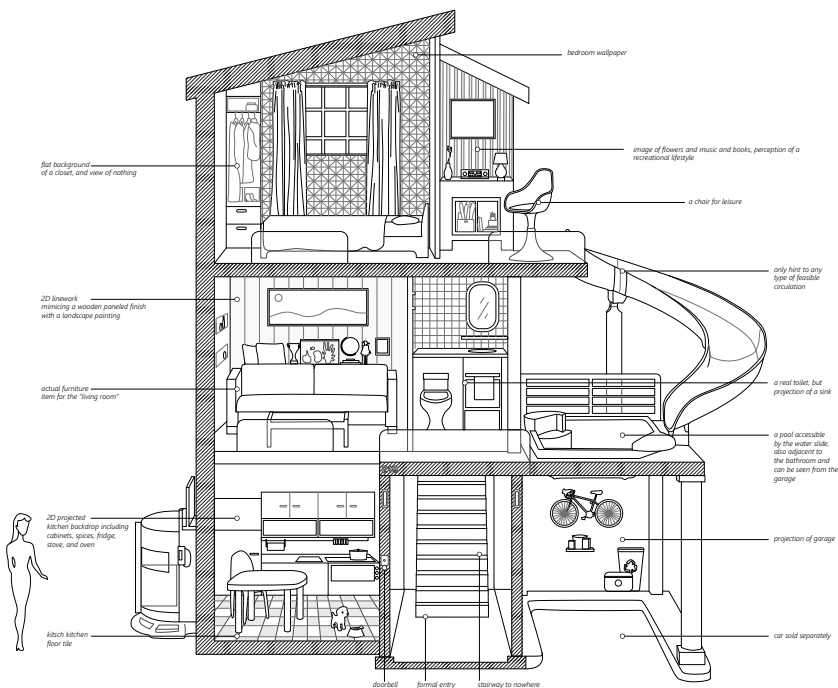


## HOLIDAY HOUSE

Real Scale - 1:18

"If you love the summer and sunshine, Lundby Holiday is the perfect doll's house for you! There's a large roof terrace here for wonderful barbecue evenings and a pull-out drawer with a mosaic-patterned pool for lazy days in the sunshine. A real summerhouse! This house comes with an open plan layout and plenty of space for play. All rooms are prewired for lighting and can be powered by the Lundby power supply. There are several accessories providing light in this doll's house - putting the lights on for the dolls in their little house is a very special feeling."

Dolls and accessories not included.



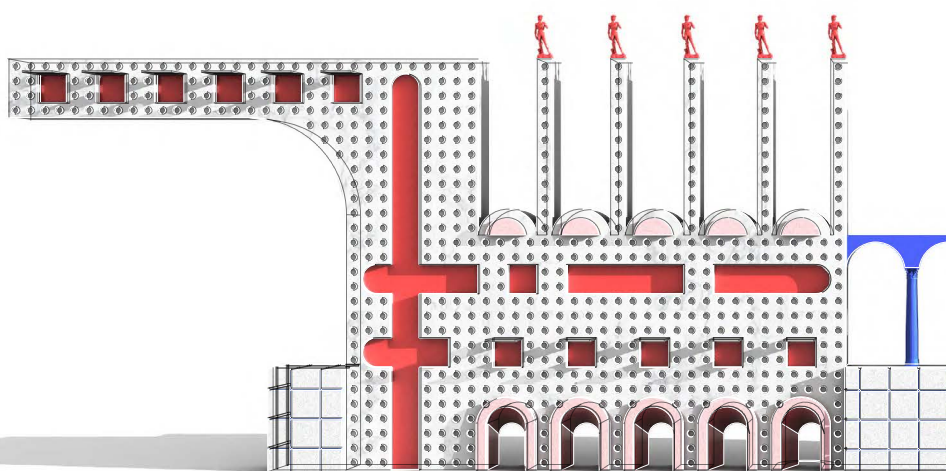
### BARBIE DREAM HOUSE PLAYSET (TODAY)

8.5 inches (H) x 30 inches (W) x 30 inches (L)

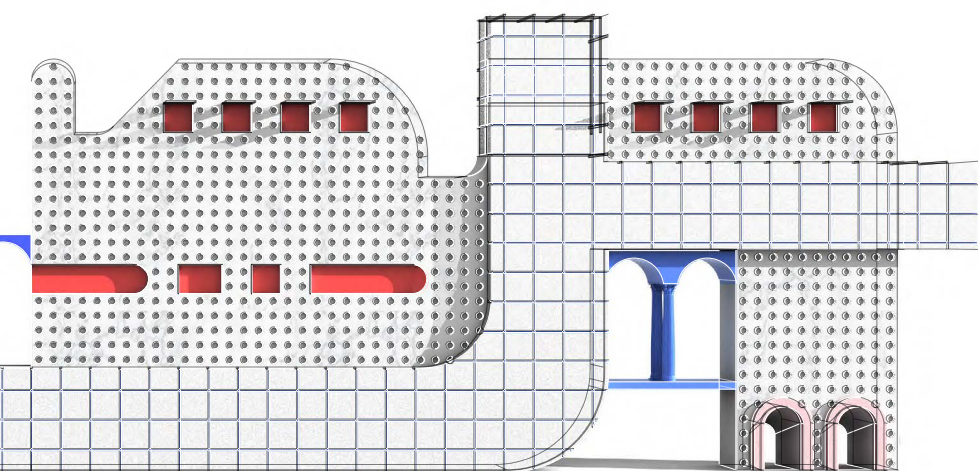
"Barbie Dreamhouse has so many amazing features - three stories, eight rooms that include a carport (car not included) and a home office, a working elevator that fits four dolls, a pool that has a slide descending from the story above, five pieces of transforming furniture, lights, sounds and more than 60 additional accessories, including an adorable puppy, that can all be used to decorate, set the scene and play out so many stories...Colors and decorations may vary."

\$179.99

Doll and clothing not included.

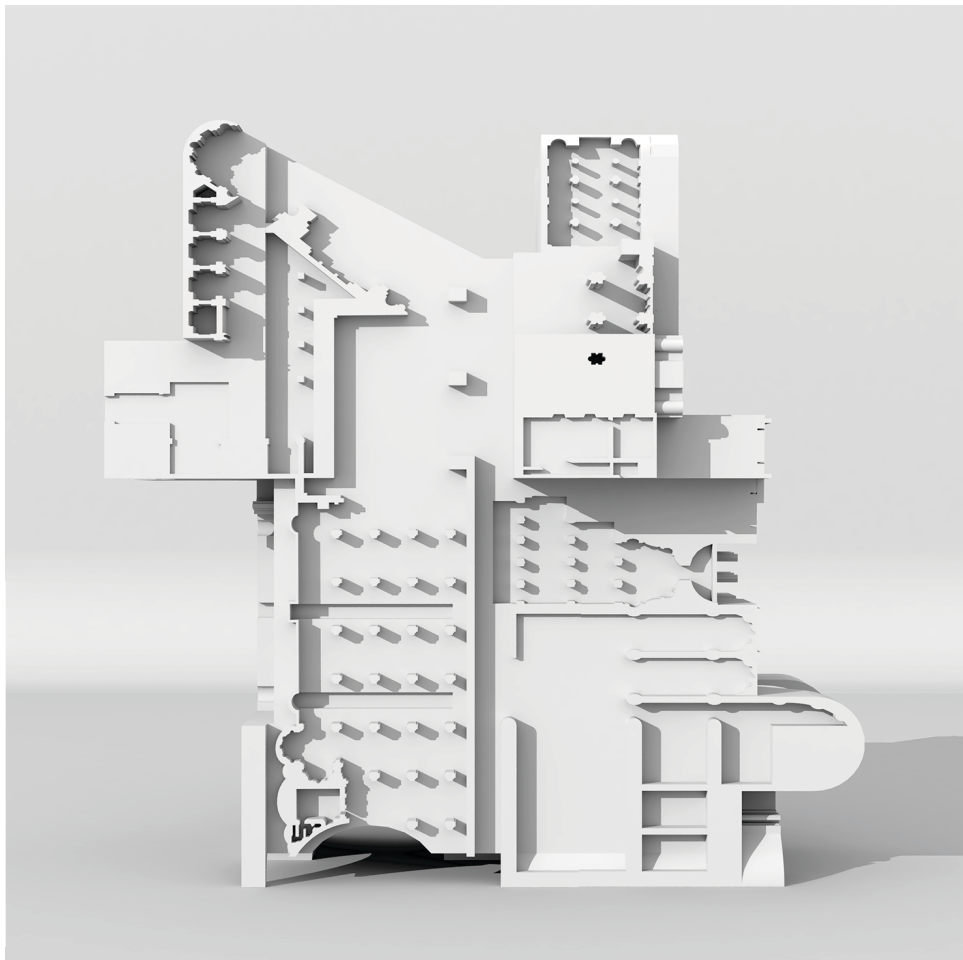


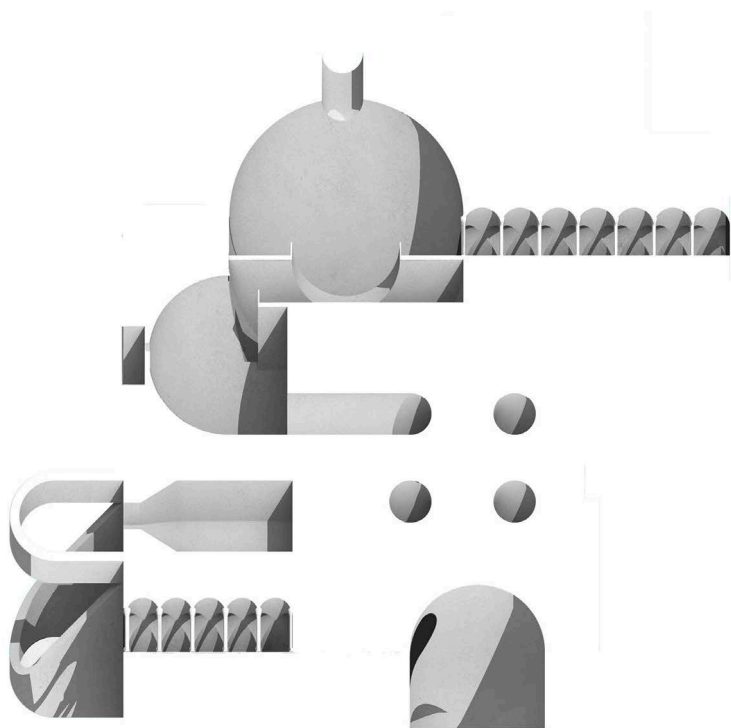
*Surface as*  
*produced in collaboration with Sara*



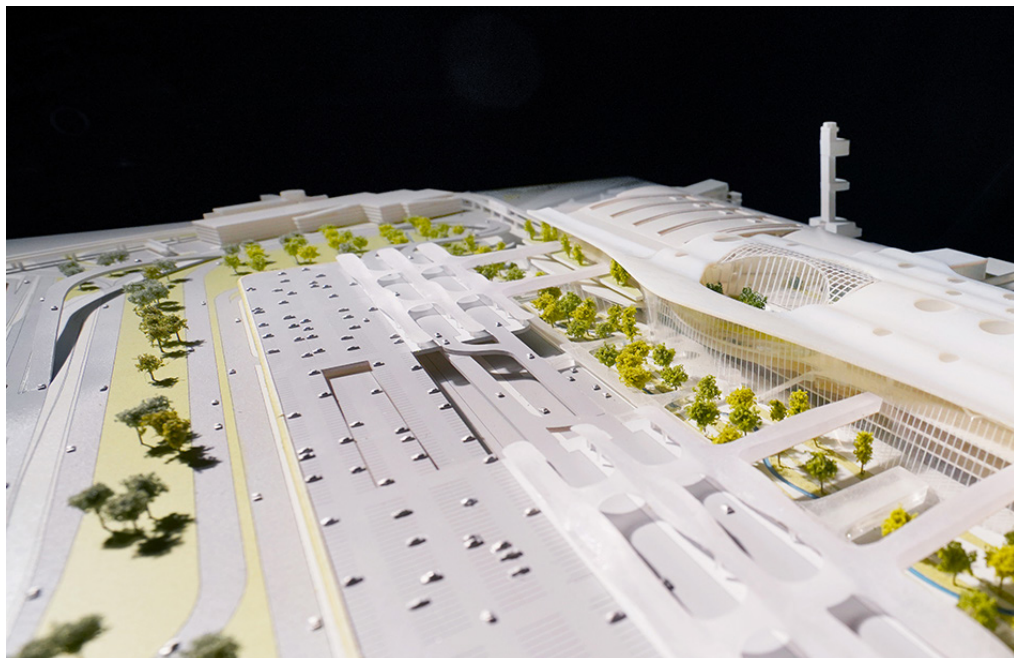
*Generator*  
*by Shih Beaudoin and Aaron Guttenplan*

*Plan as Generator*  
*produced in collaboration with Sarah Beaudoin and Aaron Guttenplan*



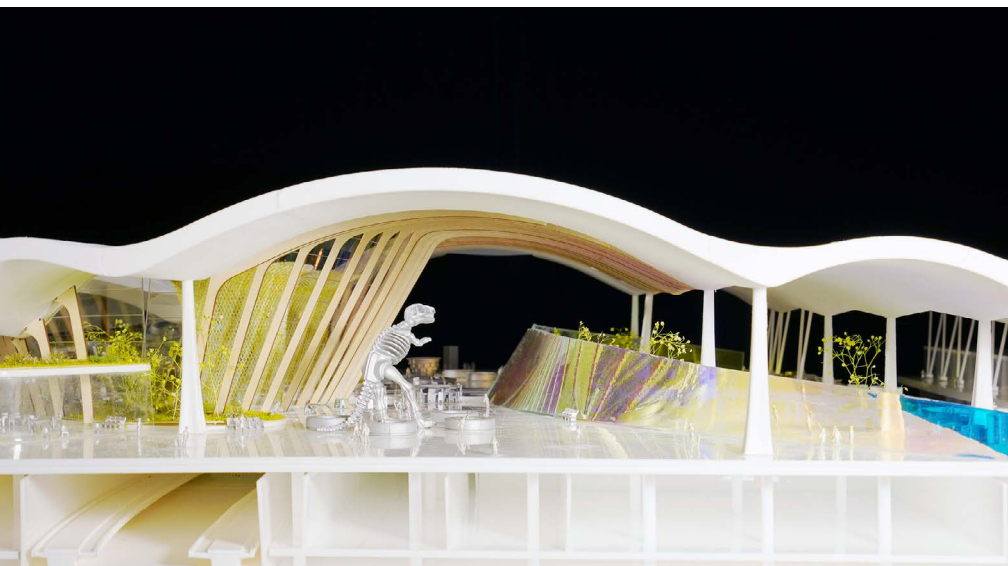
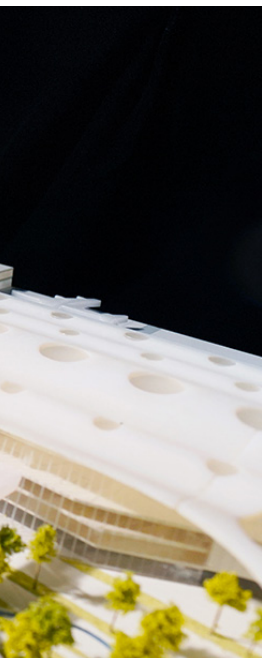


*Volume as Generator*  
*produced in collaboration with Sarah Beaudoin and Aaron Guttenplan*



*Site Model*  
*Woods Bagot - NYC*





*Sectional Model*  
*Woods Bagot - NYC*

Thank you for taking time to view these works.  
Additional content can be found at <https://danyali.com>