

andrea porras  
portfolio

Rhode Island School of Design

Her natural sense of curiosity  
Led her to ask more questions.  
So she asked,  
She wondered,  
She saw.

And so,  
She understood.

Andrea Porras

BFA Interior Architecture  
Rhode Island School of Design  
aporras@alumni.risd.edu

My journey as an artist began with an urge to make sense of the world around me. Design, as a field that constantly challenges my perception, has allowed me to explore ideas as abstract as movement and senses to our changing relationship to the built environment. I am passionate about work that transcends into multiple fields of design and aim to use art as a tool to redefine the world of architecture and spatial perception.

# chapters

## <sup>1</sup> dialogues between temporalities

What does it mean to occupy and transform an existing structure? What architectural systems can carry over from the past into a building's future?

**recreate**; from library to artist in residency program  
**ma**; from an 1800s pharmacy to a contemporary cannabis dispensary

## <sup>2</sup> designing for the human form

How has the study of ergonomics changed the fields of architecture and design? Can anthropometric ideas be implemented into the construction and design of an object?

**bend**; capturing movement through design  
**wire chair**; challenging the look of comfort

## <sup>3</sup> adaptability and resilience

How can fading art and architecture reclaim their meaning in a changing world? Does resilience come merely from transformation?

**gradient**; modernizing the traditional tile  
**the batch**; adapting an industrial structure

# <sup>1</sup> dialogues between temporalities

Today, existing buildings serve as host structures to architectural interventions that ultimately redefine how spaces are occupied and used. Adaptive reuse does not only allow us to extend the lives of buildings; it also serves as a platform to discuss how the passage of time can manifest itself through our built environment and its architectural systems.

**project 1:** Recreate; from library to artist-in-residency program

**project 2:** Ma; from an 1800s pharmacy to a medical cannabis dispensary



# re create

## from library to artist- in-residence program

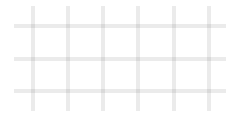
Recreate is a project that commemorates the distinct architecture of a brutalist library in Harvard University through a contemporary renovation that transforms the space into a biophillic, live-work hub for artists, writers and designers.



RECESSED WINDOWS



CENTRAL COURTYARD



RIGID STRUCTURE



POURED CONCRETE



1 The brutalist structure, originally designed by Max Abramovitz, is characterised by its rigid geometric structure, poured concrete, and massive courtyard. Along these features, its modularity and volumetric grid of solids and voids is ultimately what inspired the language of the new design.



2 What architectural systems can carry over from the past into a building's future?

This concept model captures the relationship between solid and void. It takes the building's existing features into a contemporary intervention of volumetric additions and openings that help the new program come to life.

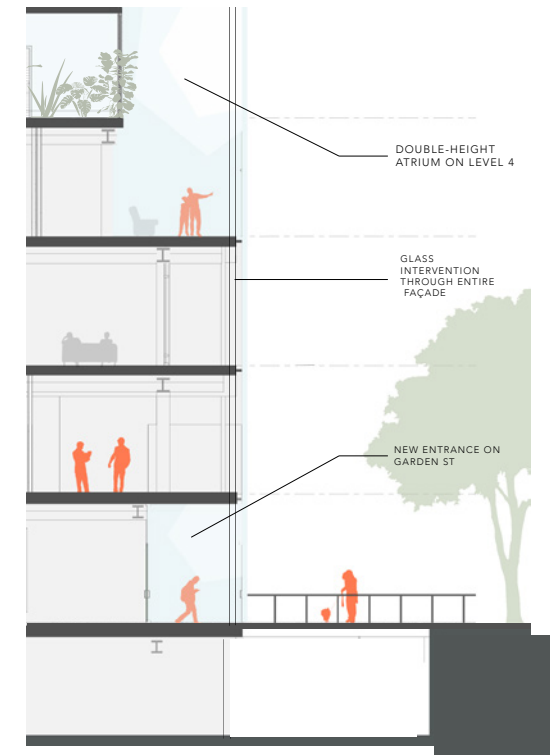
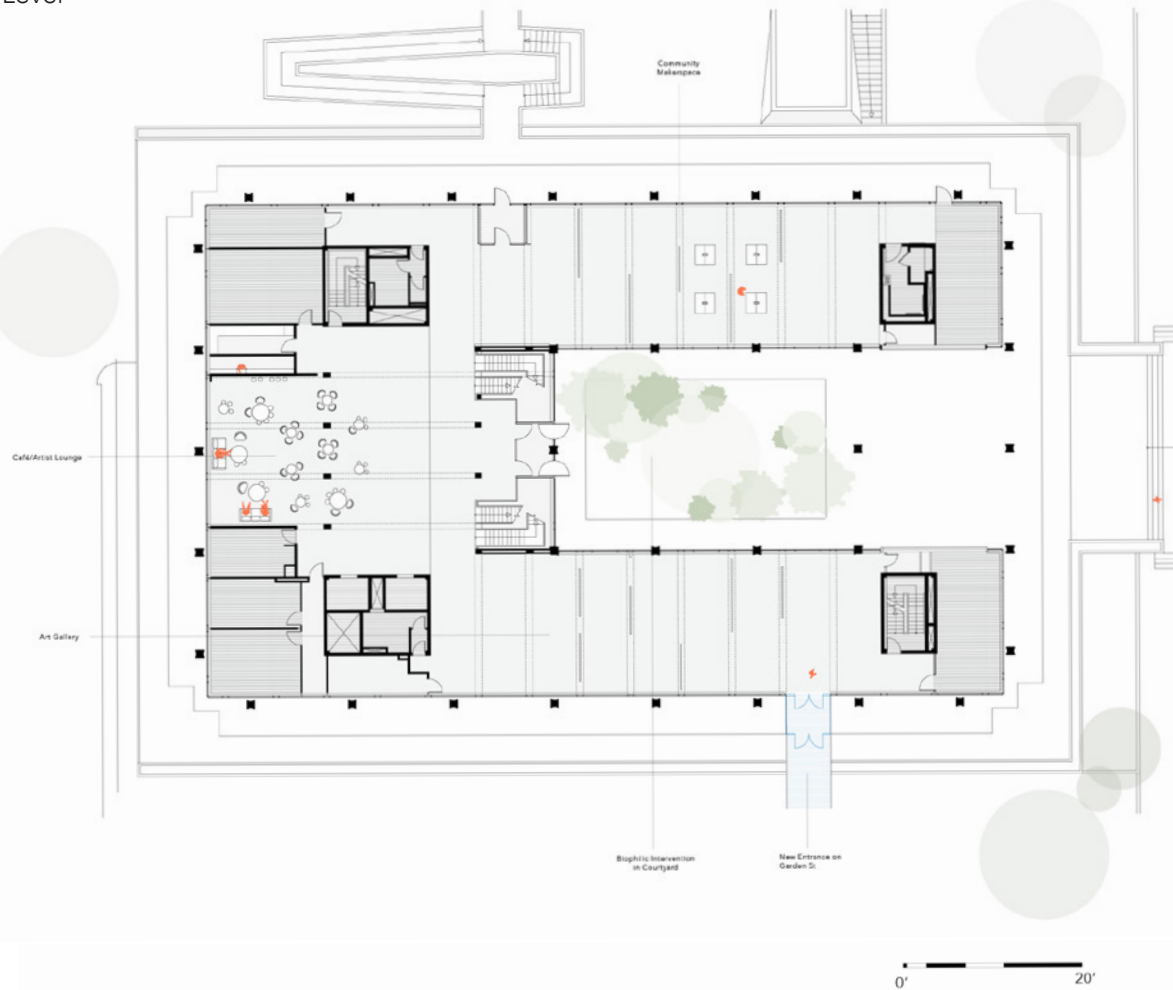


- 3 The goal was to create a biophilic live-work hub where artists and creatives could enjoy workshops, art galleries and private studios while having access to nature.

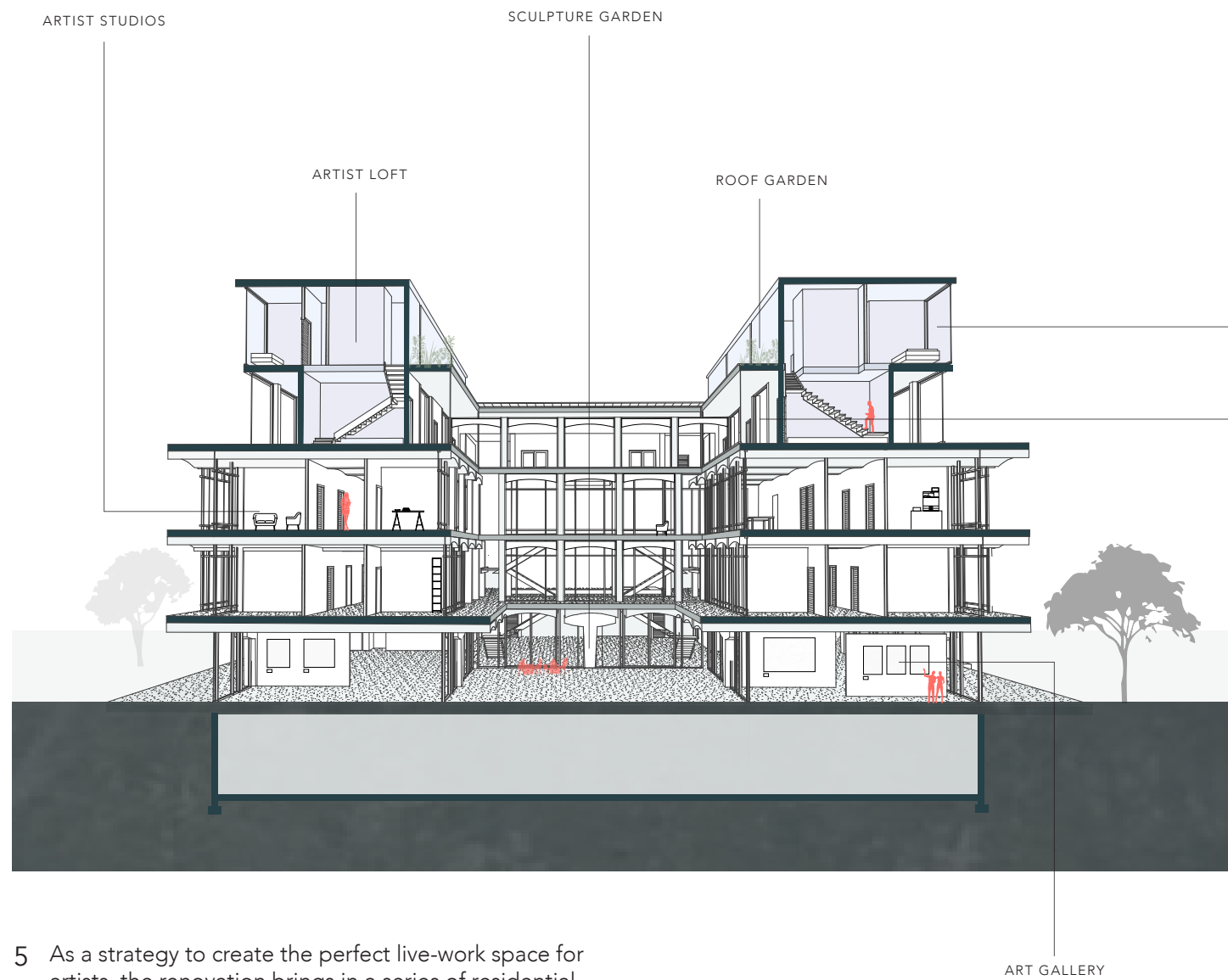
Second Level



Ground Level



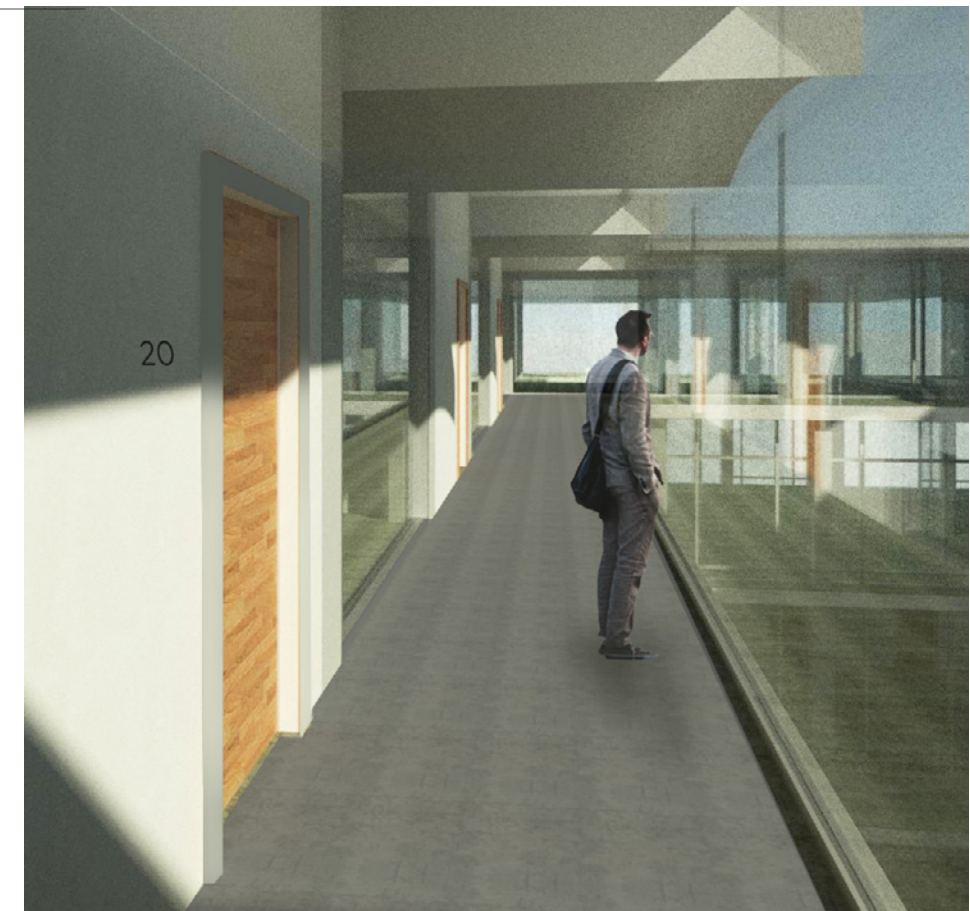
- 4 The unique courtyard becomes a sculpture garden that welcomes the community into a creatively reclaimed space while the ground level introduces a series of flexible art galleries that can be easily enclosed or opened through movable panels that come down from the existing ceiling beams.



5 As a strategy to create the perfect live-work space for artists, the renovation brings in a series of residential micro-lofts that are nested on the fourth floor and peak out into a biophilic roof. Not only does this give residents more privacy, it also enhances their overall experience by allowing them to reconnect with nature; a feature often sought by creatives when it comes to choosing the right residence program.



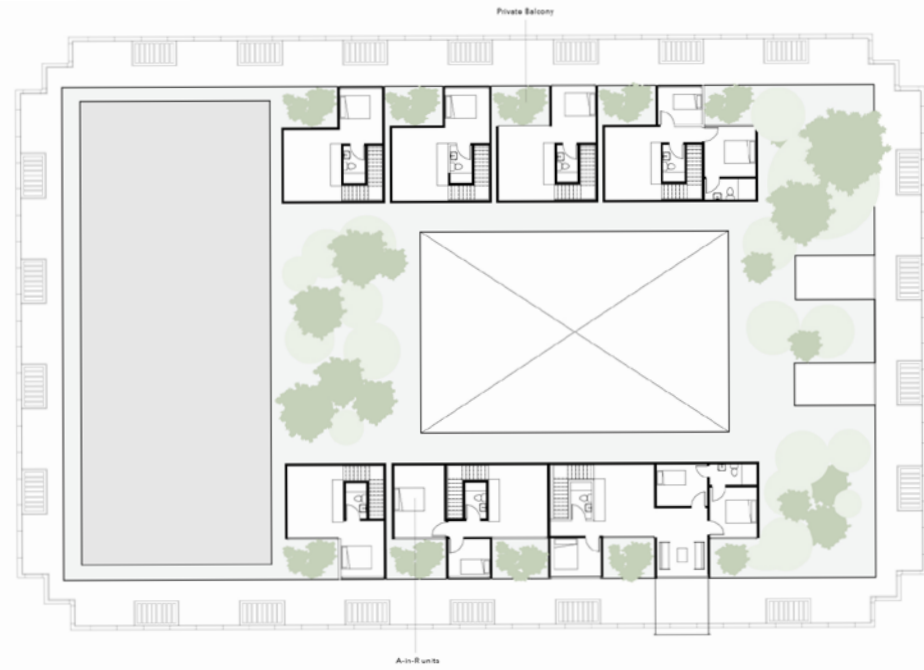
View of roof garden from artist loft



Key access hallway to resident lofts

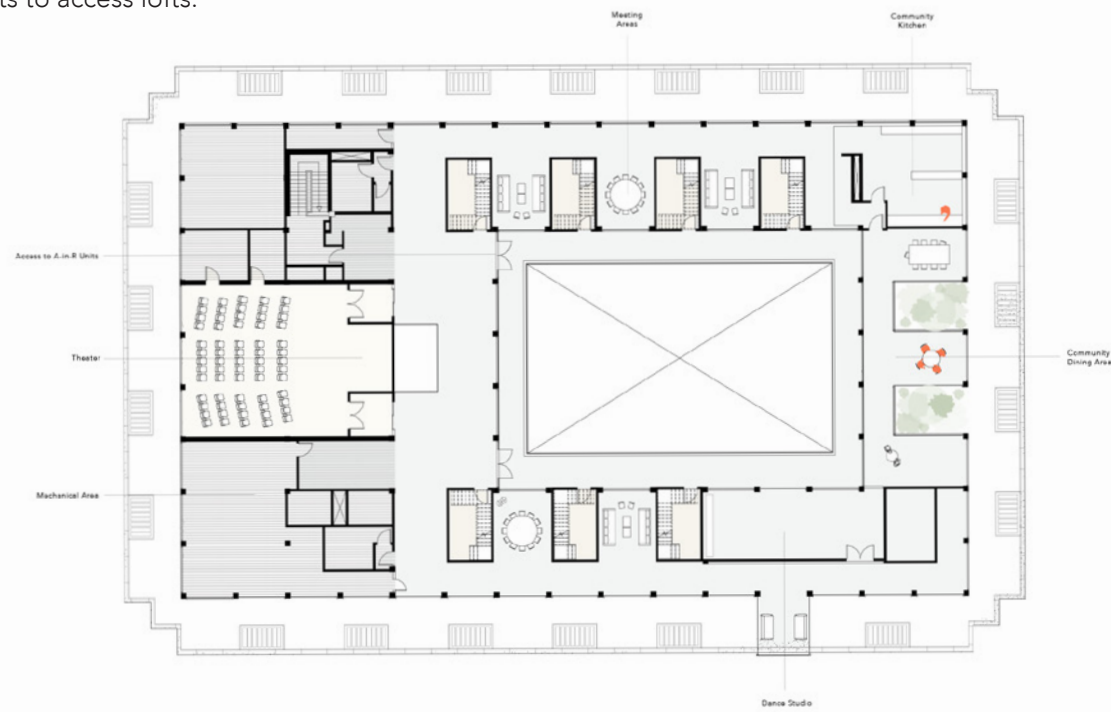
## 6 Biophilic Roof

Features comfortable live-work spaces and private balconies that celebrate the existing geometry.

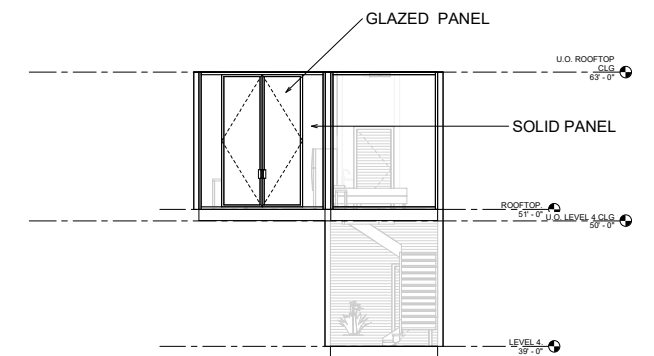
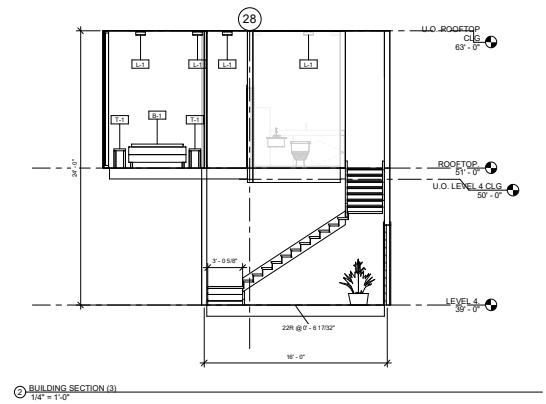
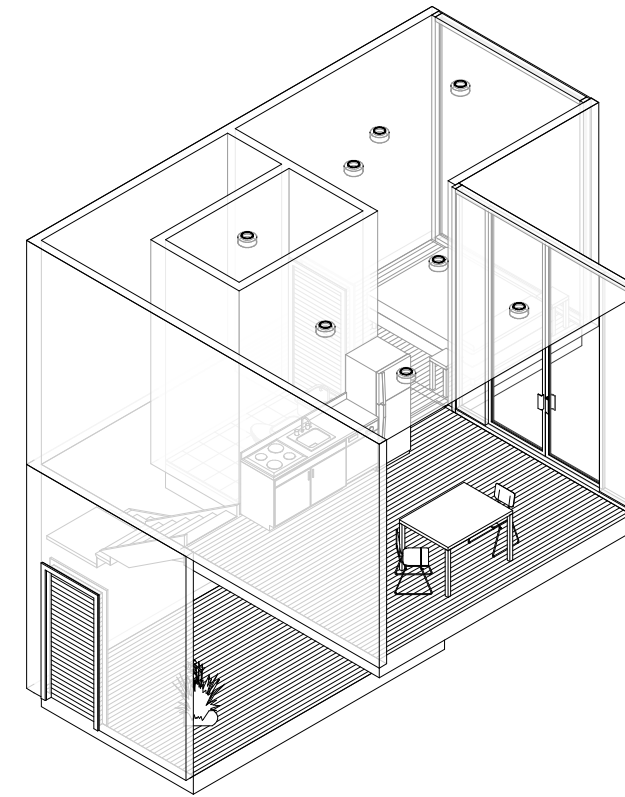


## 7 Level 4

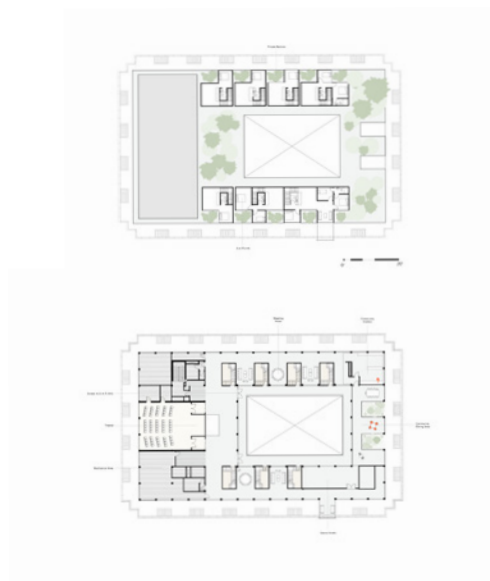
Designed as a more private floor for residents to enjoy a series of work lounges and relaxation spaces along a theater for lectures and gatherings. The intervention also introduces a private hallway for residents to access lofts.



0' 20'



## 8 Typical artist loft



9 Model: Typical Artist Loft  
Poured concrete with steel frames  
that are nested within the building's  
existing structure



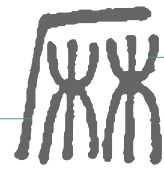
10 The materials chosen for the intervention include double-glazed glass, soft woods, ceramic tiles and site cast concrete; a reinterpretation of the original material palette.



ma

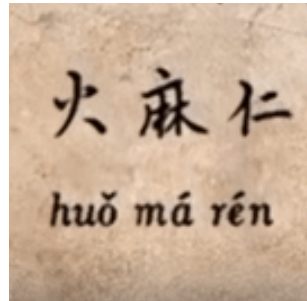
## from an 1800s pharmacy to a contemporary cannabis dispensary

The project explores how the interior architecture of a two-story building in downtown Providence could be reimagined to serve as a contemporary, medical cannabis dispensary. The design plays with 2- and 3- dimensional graphic elements that help create a brand with a strong presence in a retail environment.



the horizontal and vertical lines represent the **home** in which they were drying.

the part beneath and to the right of the straight lines represent the **hemp fibers** dangling from a rack



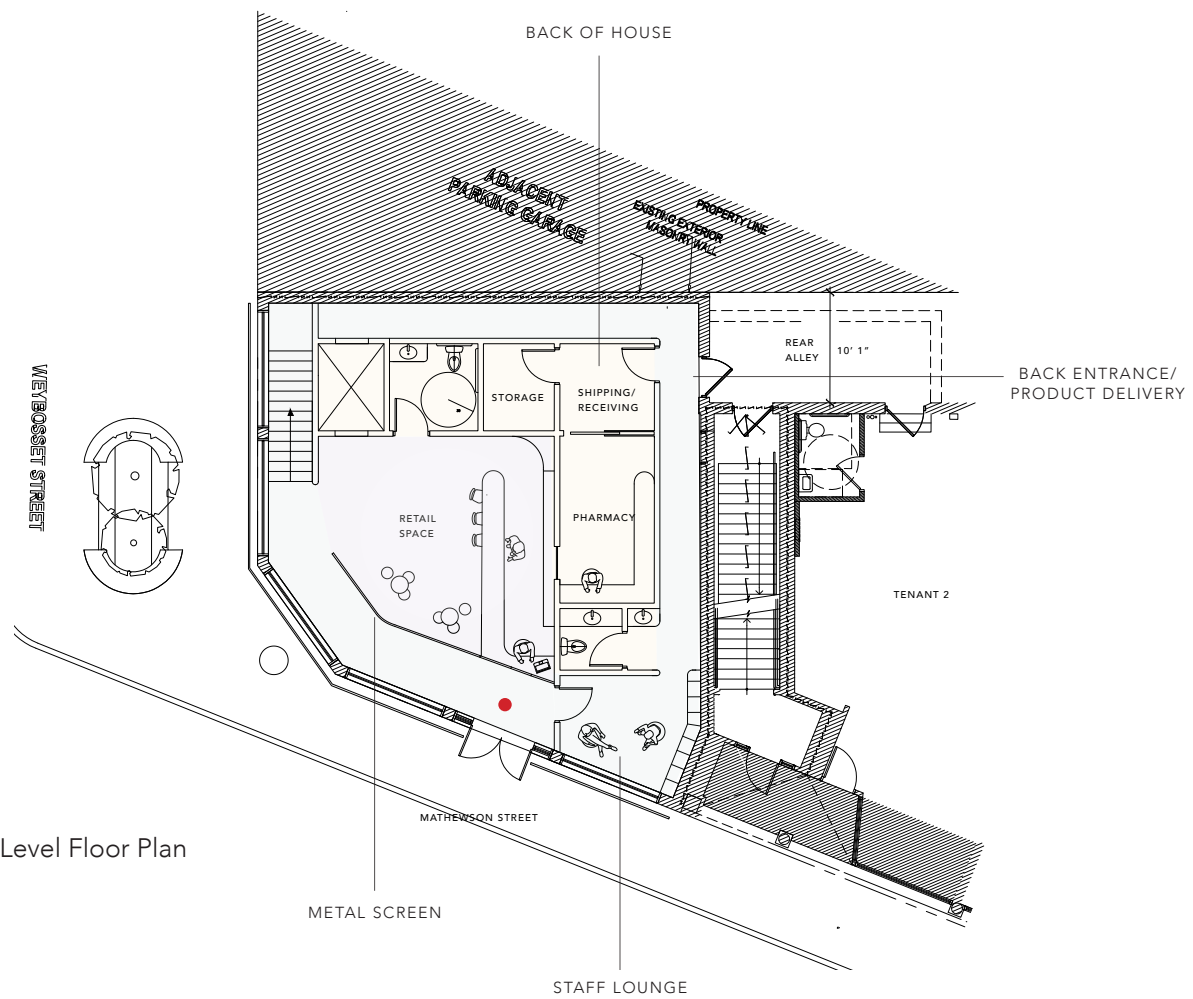
1 Ma takes inspiration from Ancient Chinese medicine books which hold the first evidence of the use of cannabis as a medical remedy.

## 2 Graphic Line

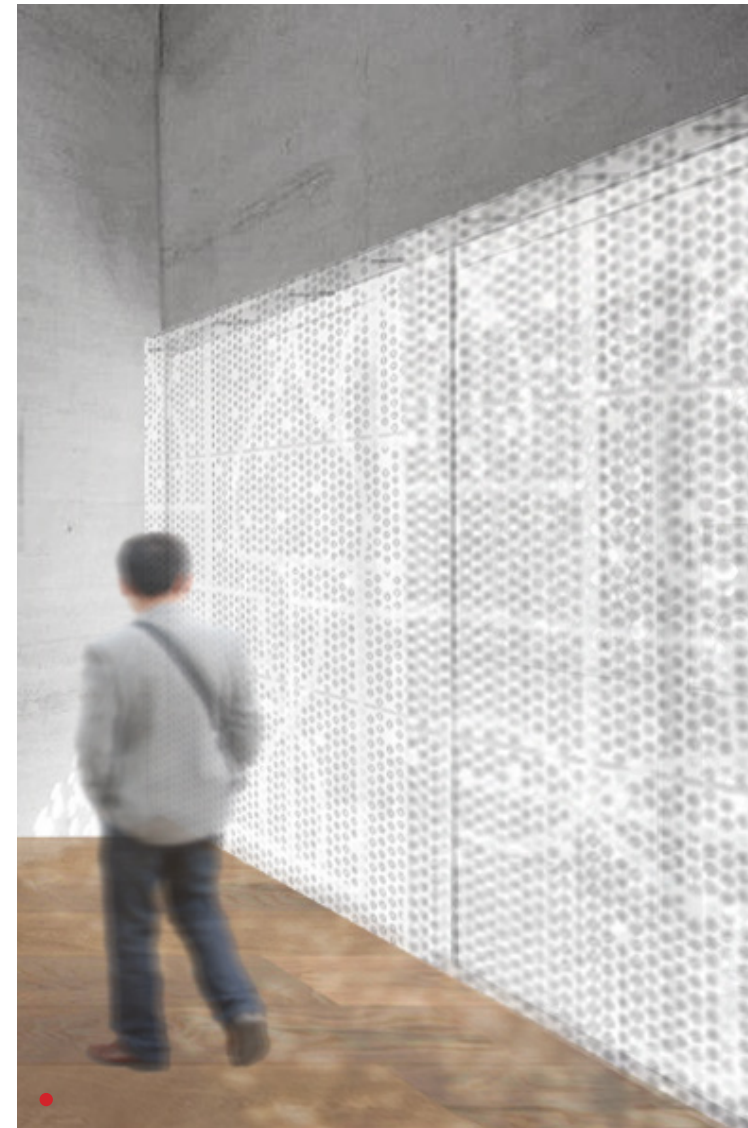


ma

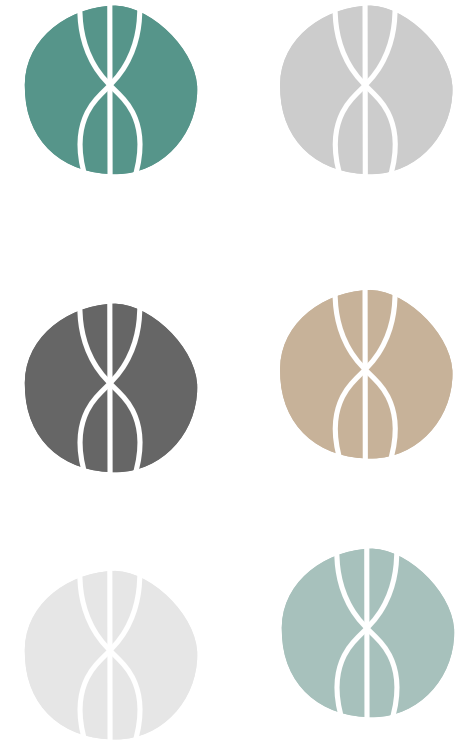




3 Ground Level Floor Plan

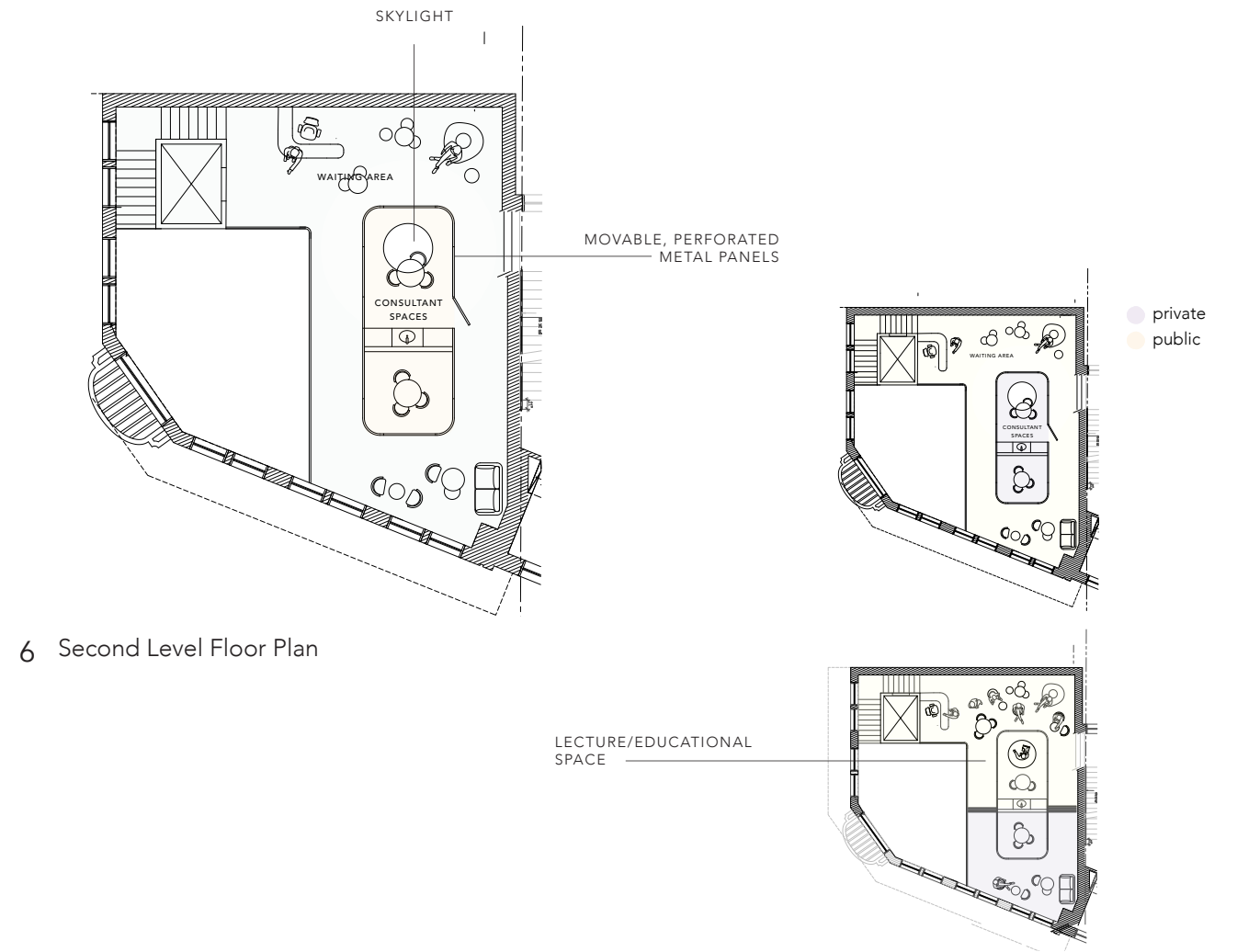


4 The intervention consists of a series of perforated metal panels that help create a more private retail space for a product that is still highly stigmatized. The panels also carry over the bbrand's graphics in a subtle, yet powerful, way.





5 In the second level, the perforated metal panels enclose private consultation spaces for doctors and clients.



## <sup>2</sup> designing for the human form

The human body has always been a protagonist in the world of design and architecture. Objects are constantly re-designed to better accommodate the human form. This chapter explores our relationship to architecture when studied in a more intimate scale.

**project 1:** bend; capturing movement through design

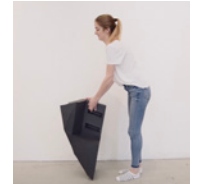
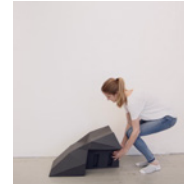
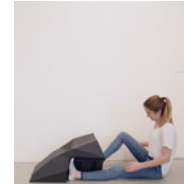
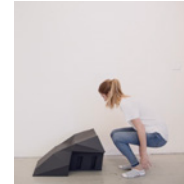
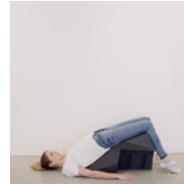
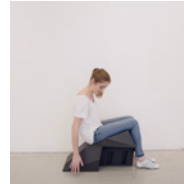
**project 2:** wire chair; challenging the look of comfort

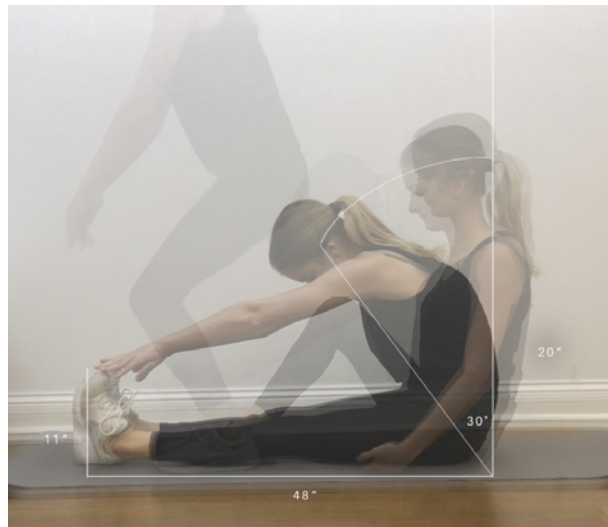


## capturing movement through design

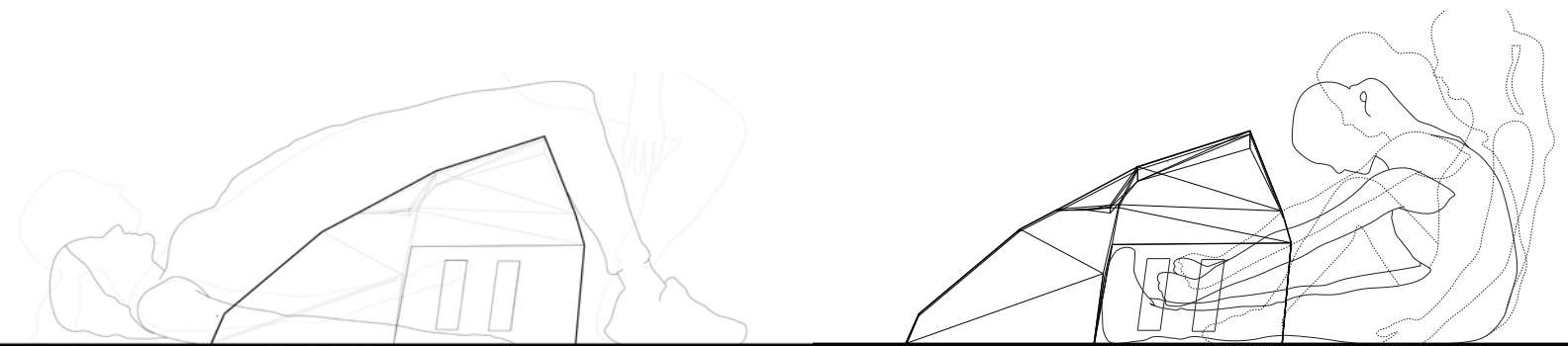
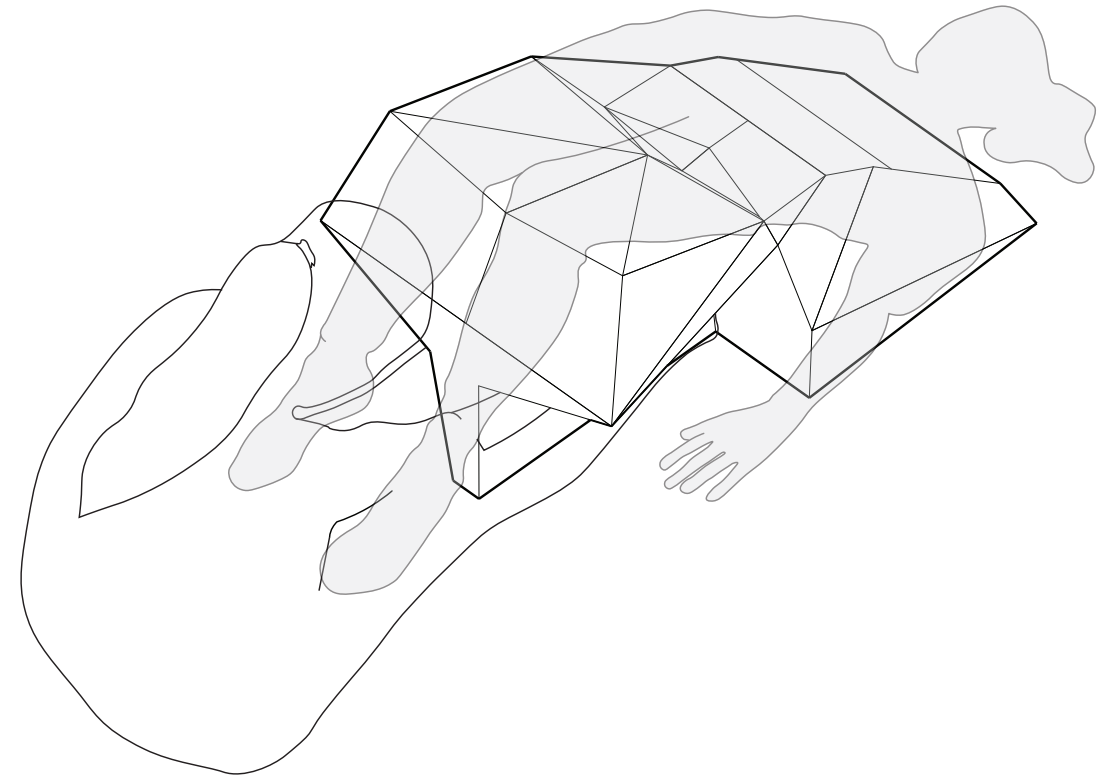
Bend is a dual-purpose artifact that accomodates the human body as it moves through two optimal yoga poses that target back pain. Bend optimizes the outcome of the two stretching positions as it provides essential support through comfortable angles.

bend





1 Ergonomic Research

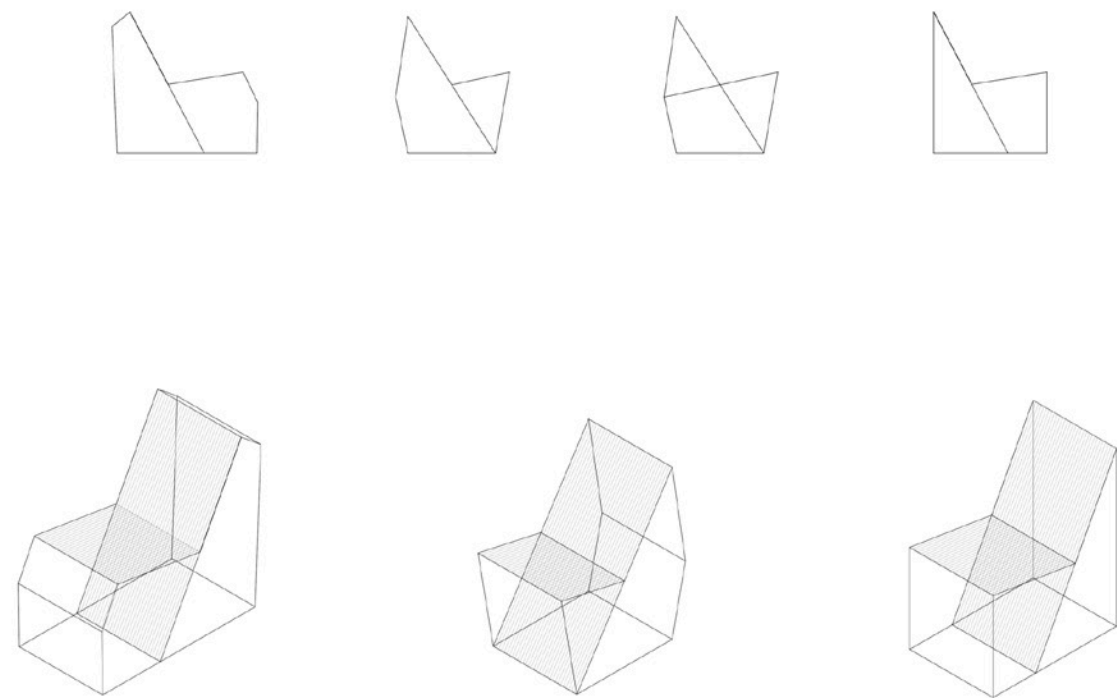




## challenging the look of comfort

The design aims to juxtapose two materials that look similar, but function in almost opposite ways; metal and polypropylene rope. Metal as a rigid structural frame and rope as a softer medium that adjusts to the human body.

# wire chair



1 Materials used in final piece:  
Stained Metal and 140m of  
Polypropylene Rope

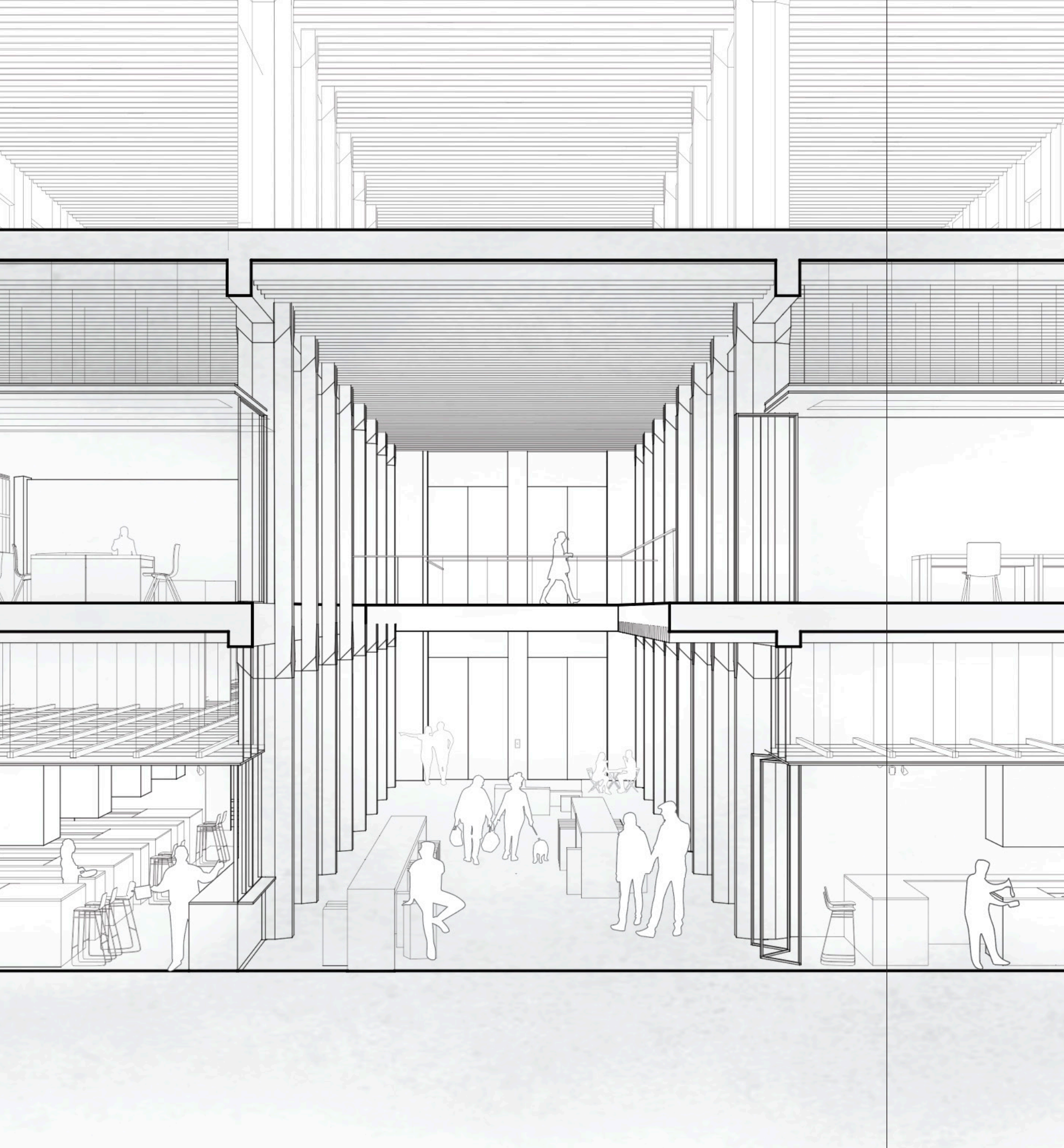


### <sup>3</sup> adaptability and resilience

Resilience, as the ability of something to come back into shape and claim a new place, has become one of the major protagonists in the world of architecture and adaptive reuse. This chapter explores ways in which design has allowed for places and ideas to return in a new, revitalized form.

**project 1:** the batch; adapting industrial structures

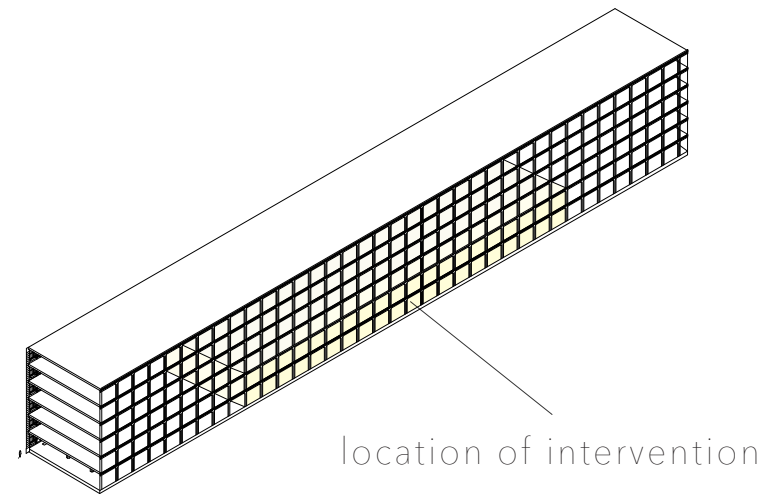
**project 2:** gradient; modernizing the traditional tile



# the batch

## adapting industrial structures

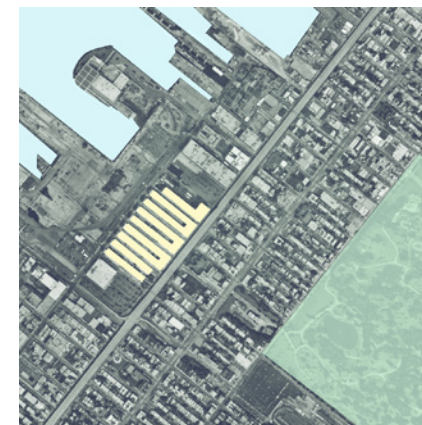
Following the global trends of future work environments, the design studio explored strategies to convert an industrial warehouse in Brooklyn, NY, into a coworking space. Due to the site's location and high pedestrian traffic, turning the warehouse into a culinary incubator became the perfect adaptive reuse strategy.



1 Industry City, known as the heart of a vibrant and creative community in Brooklyn, served as the perfect platform to host a culinary work hub. It's open floor plan with a grid-like column structure also allowed a lot of flexibility in the design.



southwest elevation



natural systems

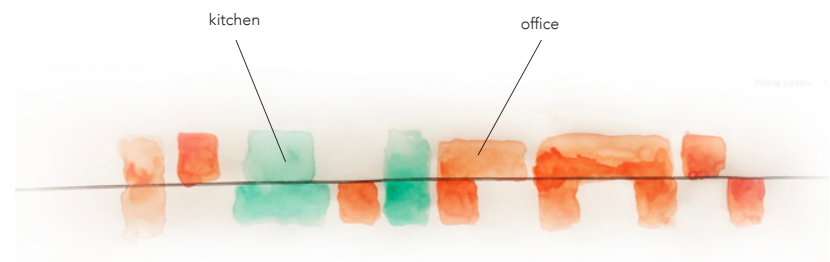


food venues



accessible streets

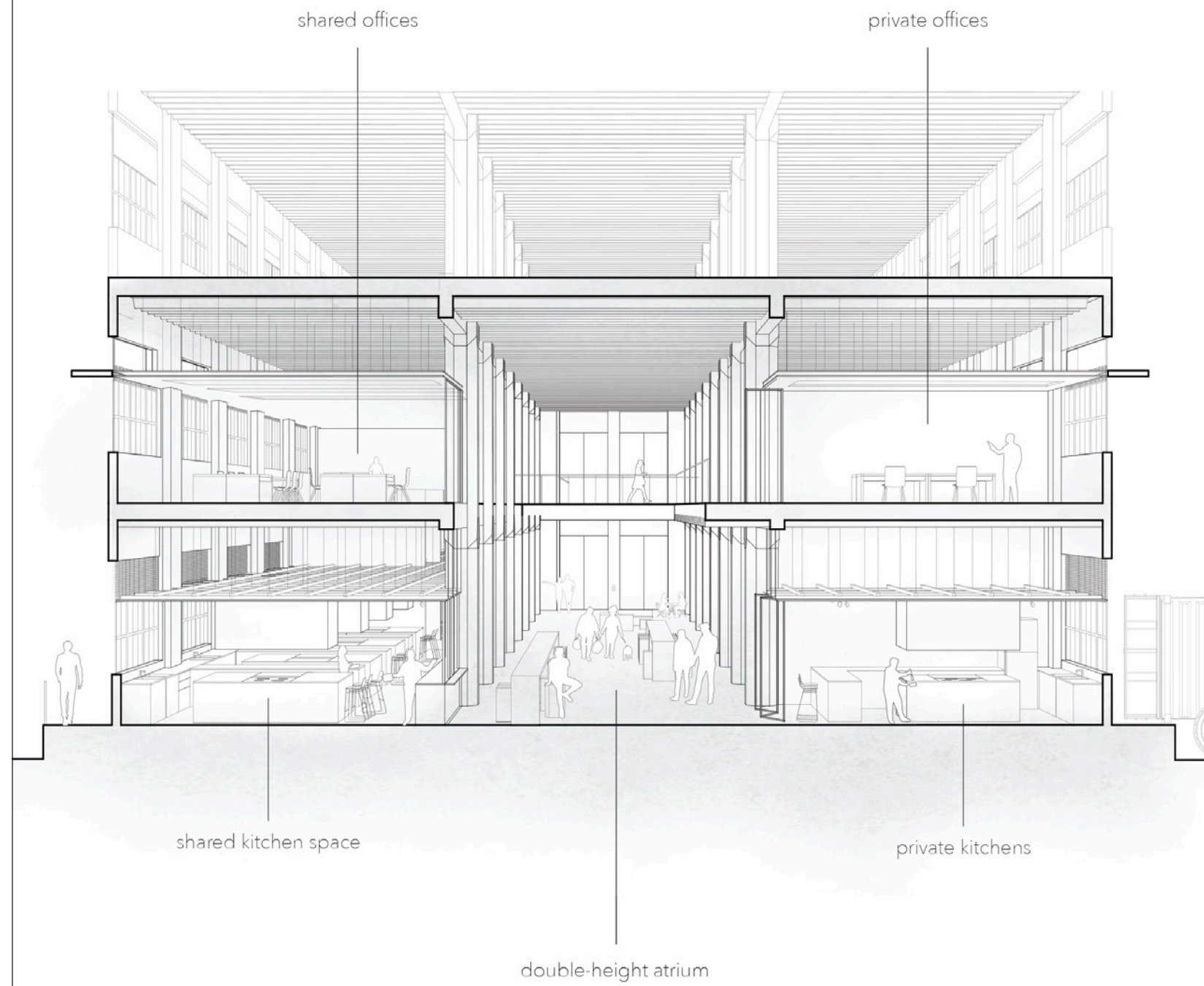
220 36th Street Suite #2-A, Brooklyn, NY 11232



elevation

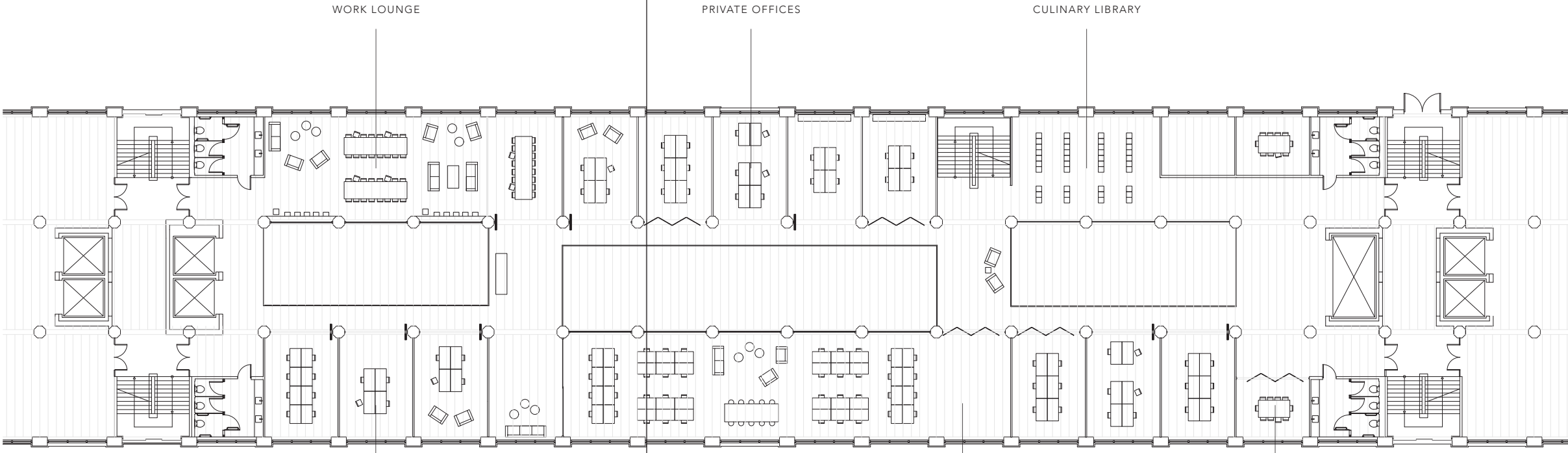


plan



2 The intervention offers a unique combination of amenities for food entrepreneurs including, individual and shared office spaces, private and shared kitchens, and a "market-like" atrium that invites the Brooklyn community to engage in a culinary experience while supporting local businesses.

level 2



WORK LOUNGE

PRIVATE OFFICES

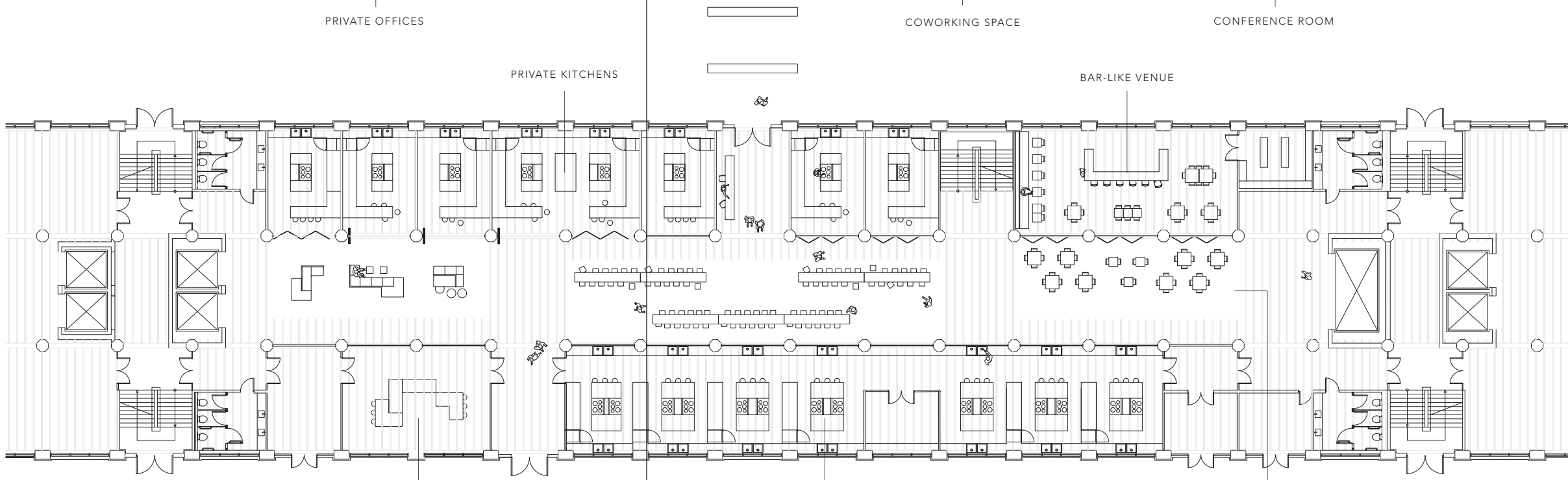
CULINARY LIBRARY

PRIVATE OFFICES

COWORKING SPACE

CONFERENCE ROOM

ground level



PRIVATE KITCHENS

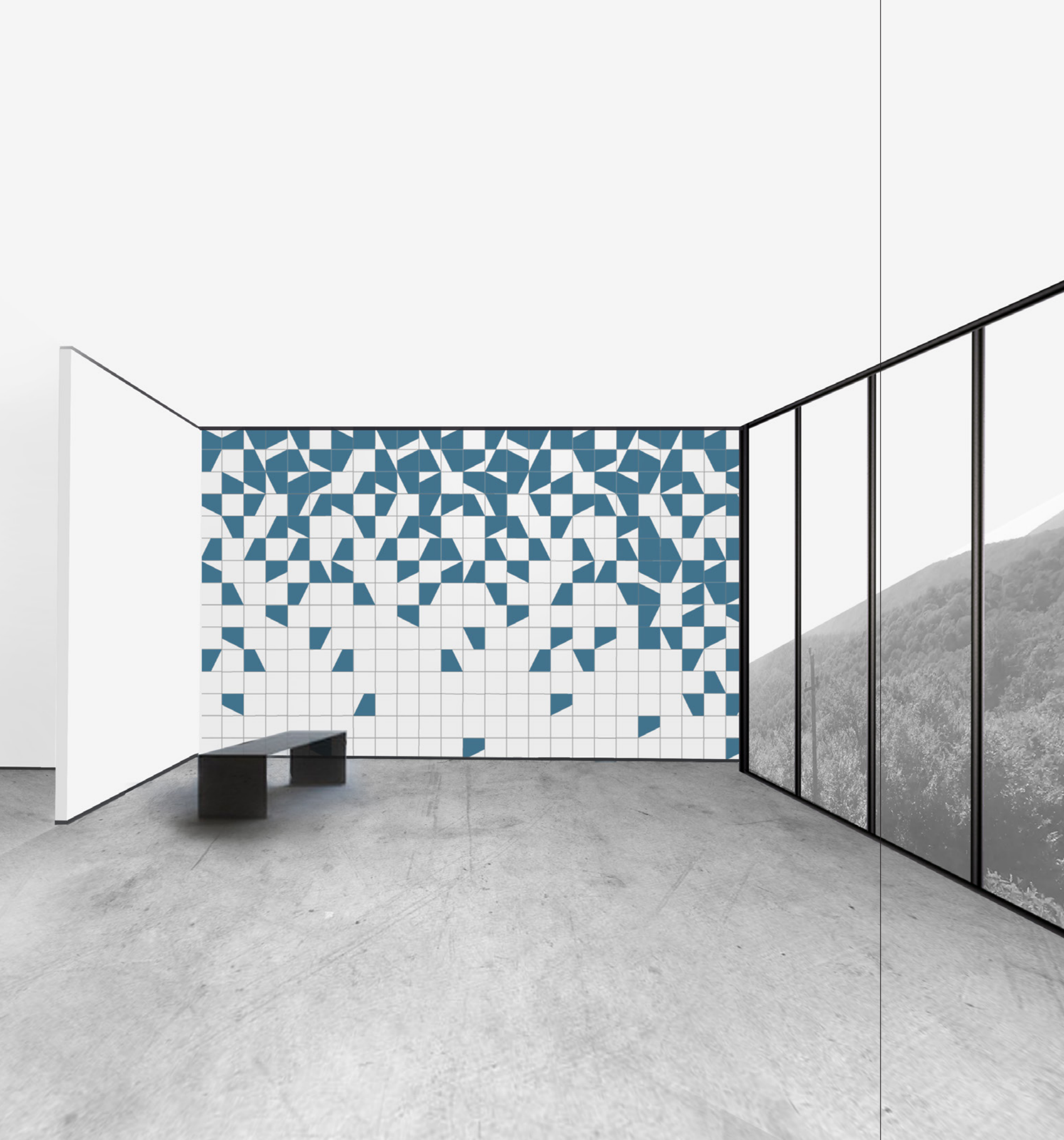
BAR-LIKE VENUE

PUBLIC DINING AREA

SHARED KITCHENS

MARKET ATRIUM





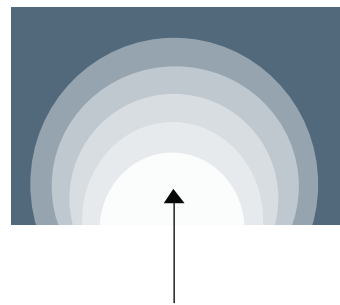
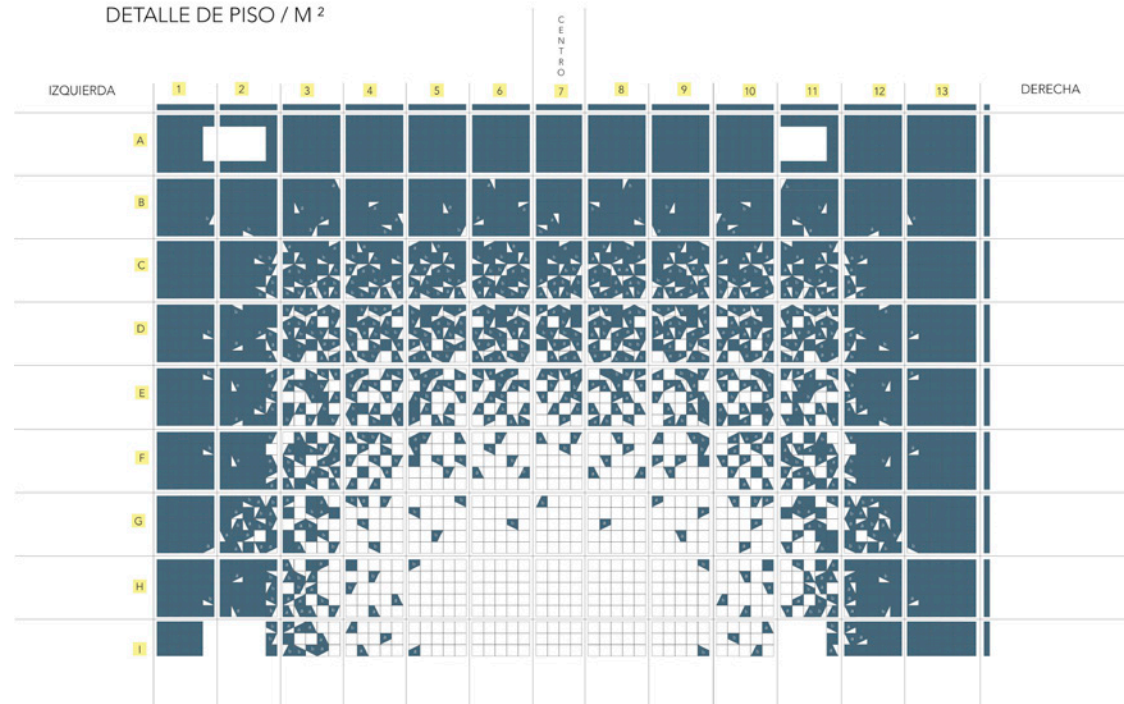
## modernizing the traditional tile

Inspired by the ornamental cement tiles that once adorned Guatemalan homes, the installation aims to capture Guatemala's architectural heritage by revitalizing one of its iconic elements.

\*The installation was designed for the architecture firm SUR Desarrollos in Guatemala City.

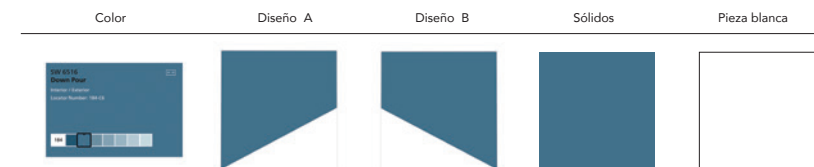
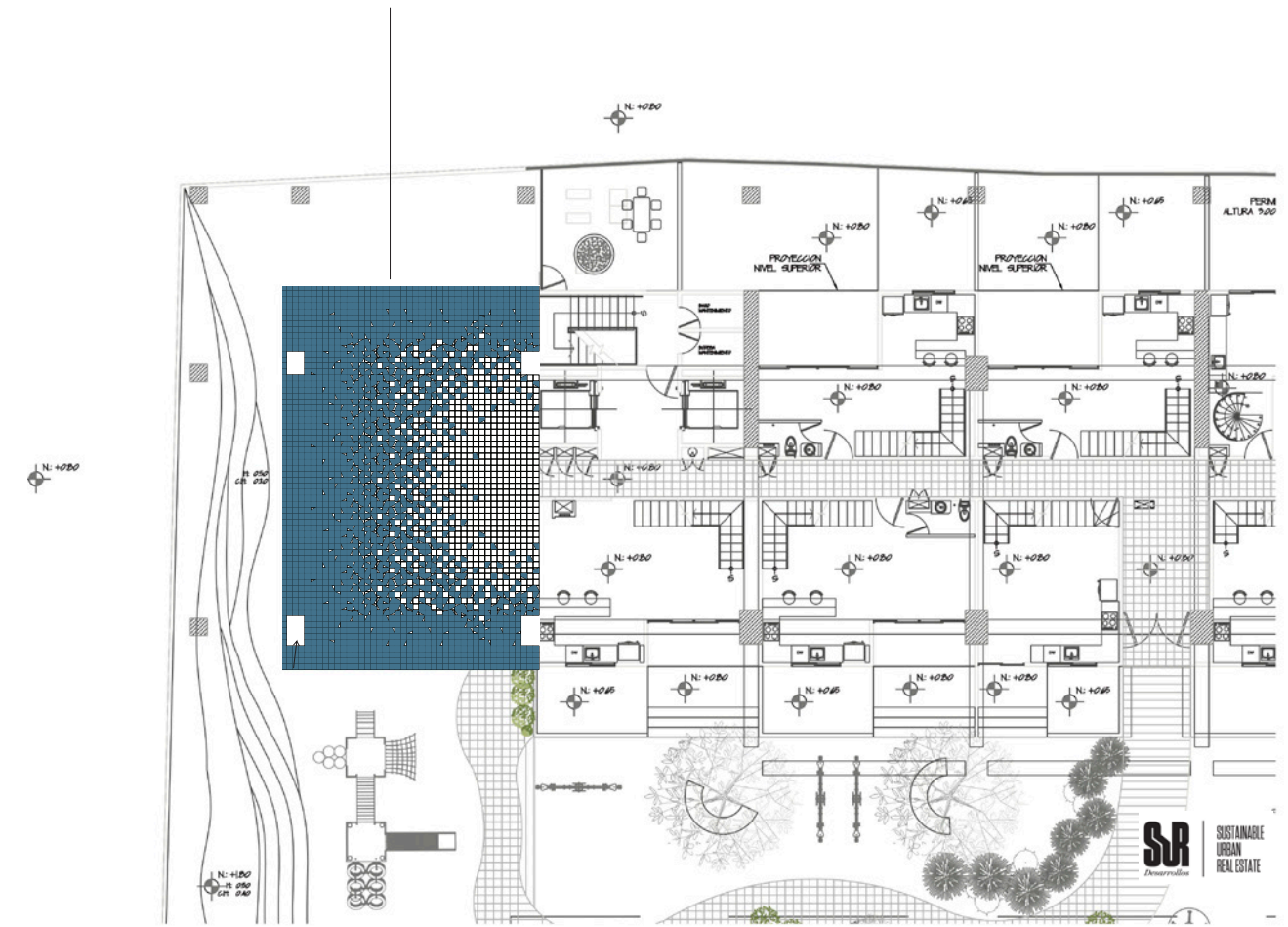
# gradient

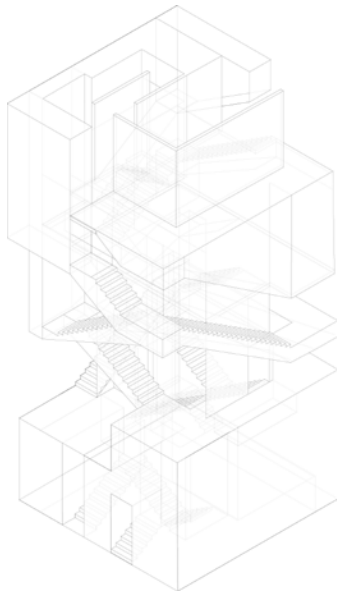
DETALLE DE PISO / M<sup>2</sup>



On the primary location of the intervention, the design intent was to create a gradient effect as one entered the space, simply through the arrangement of the tiles.

Location of Intervention





Andrea Porras