

SELECTED WORKS

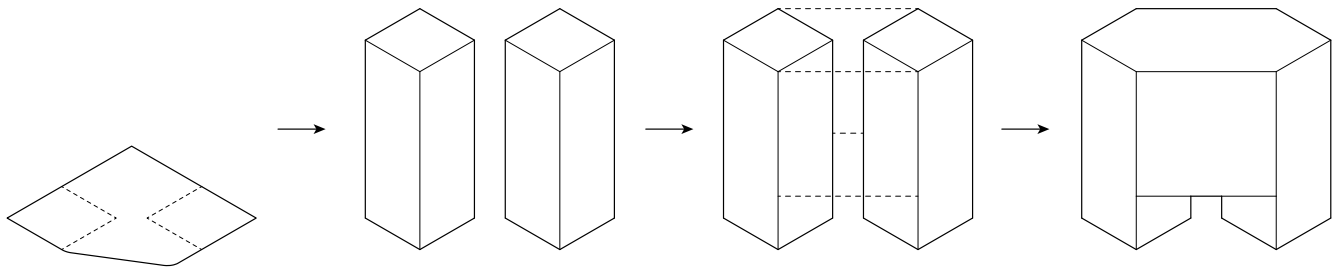
ALLEN WANG

INDEX

<i>Skid Row Public Library</i>	<i>4-17</i>
<i>Mt. Wilson Scientist's Retreat</i>	<i>18-25</i>
<i>Co-Housing På Nørrebro</i>	<i>26-33</i>
<i>West Hollywood Mixed-Use Housing</i>	<i>34-41</i>

The Tower Library

SKID ROW

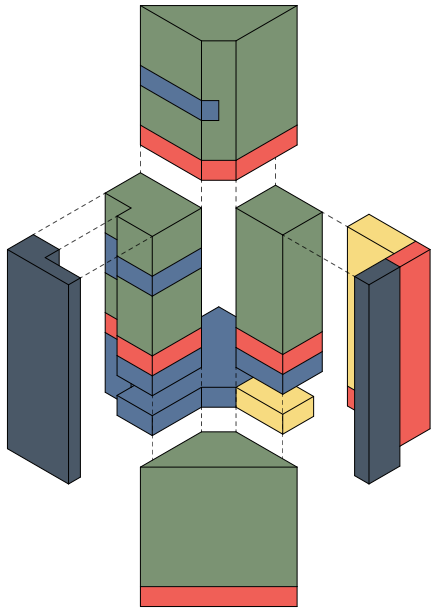


This project aims to create a hub for the Skid Row community to allow everyone to have a meaningful space to gather, learn, and make. The library, which houses more of the individual spaces such as reading rooms and collections, is used to learn and acquire new knowledge through physical and digital mediums. The community rooms, which houses more of the interactive spaces such as multi-purpose rooms and maker spaces, is used to create connections between each other while also allowing for users to learn and work together in collective groups. This allows for users to bounce back and forth between individual and interactive spaces to fit their needs while also creating inclusivity within the surrounding communities.

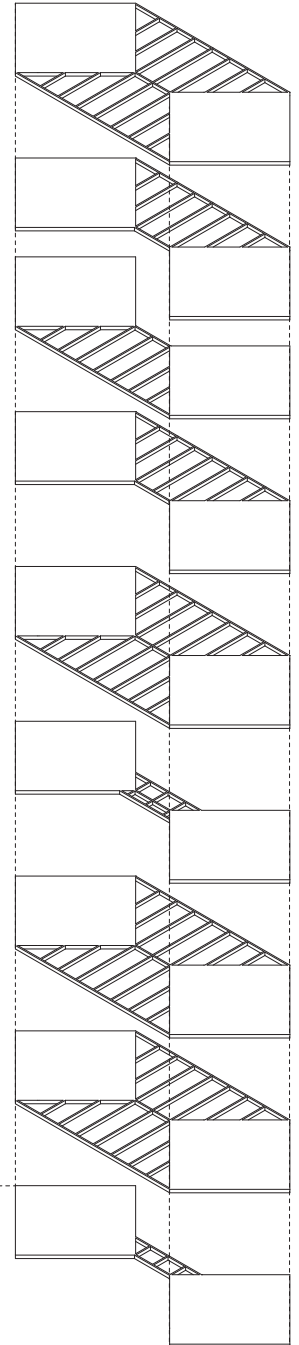
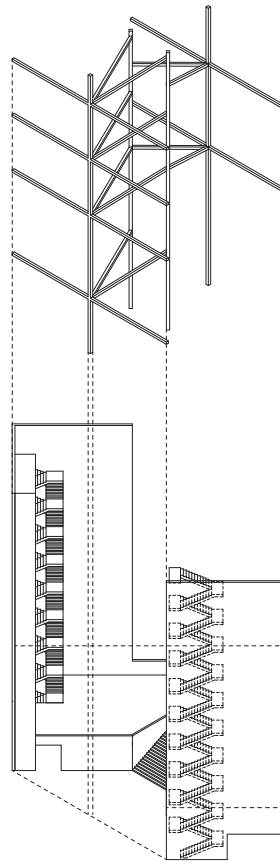
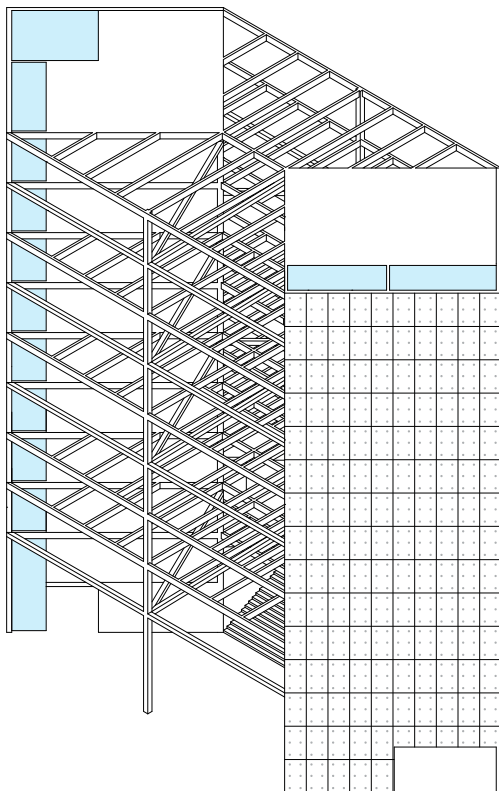
The conceptual basis for the design of this project is these two towers that shifted to separate corners with a bridge that spans from corner to corner. When the two towers are at opposite corners with the space being 45 degrees in the middle, the resulting figure

is a crystal gem. The two towers house circulation and mechanical cores while the inner portion, which resemble a bowtie, is used to house the majority of the program. Due to the structural design of the project, all of the floor plates can be separated into 4 areas: two squares and two trapezoids. This separation allows for double height spaces to be utilized as sections of the floor plate are being deleted.

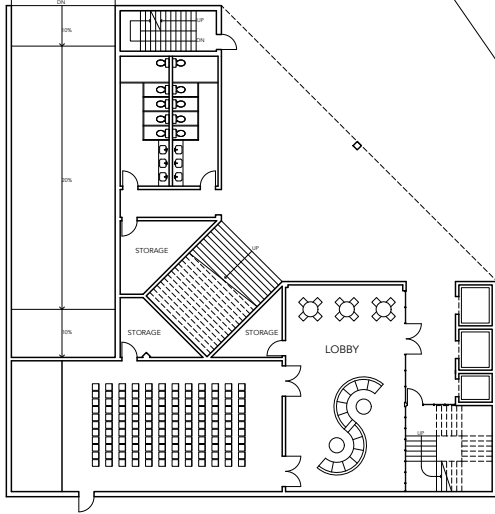
The project consists of two monolithic towers that are connected by a glass volume. The glass volume provides open and light filled spaces, while the towers provide more closed and intimate spaces. A tree like structural system reaches through the open spaces and creates connections and openings between floors levels. Terracotta rods span across the façade of the glass volume to provide a sense of horizontality that contrasts the verticality of the towers. The rods also provide sun shading the glass volume.



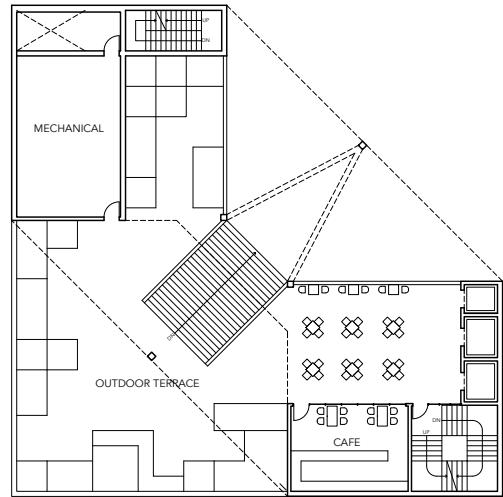
<ul style="list-style-type: none"> LIBRARY (STACKS, READING / STUDY SPACES) COMMUNITY SPACE (MULTI-PURPOSE ROOM, MAKER SPACES, CAFE) RESTROOMS (PUBLIC AND STAFF) BACK OF HOUSE (OFFICES, MEETING ROOM, MEP) VERTICAL CIRCULATION 	<p>28,000 SF</p> <p>10,000 SF</p> <p>2,000 SF</p> <p>9,000 F</p>
--	--



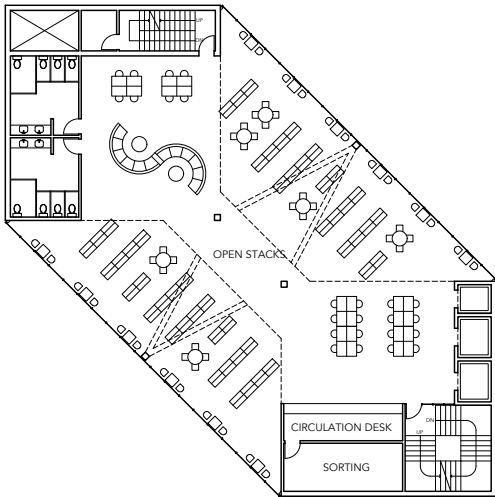
STRUCTURAL FRAMING DIAGRAM



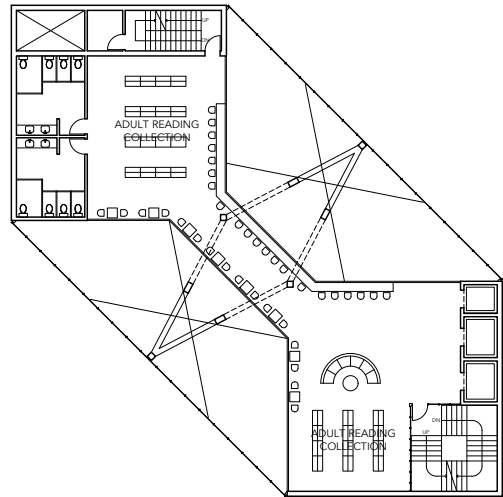
GROUND FLOOR



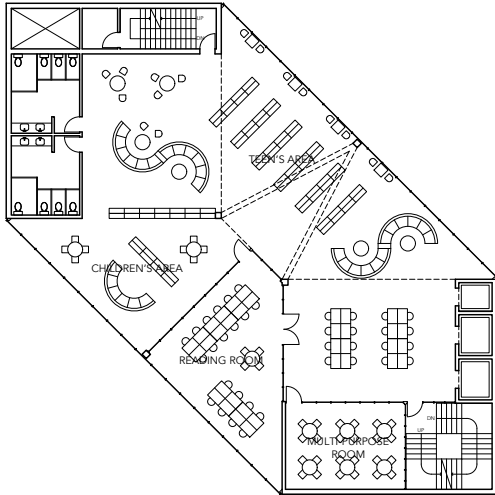
2ND FLOOR



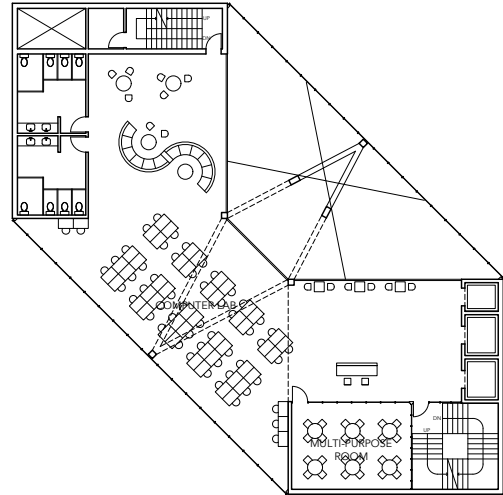
5TH FLOOR



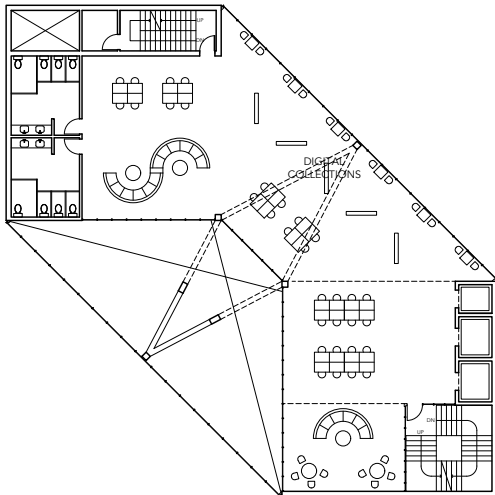
6TH FLOOR



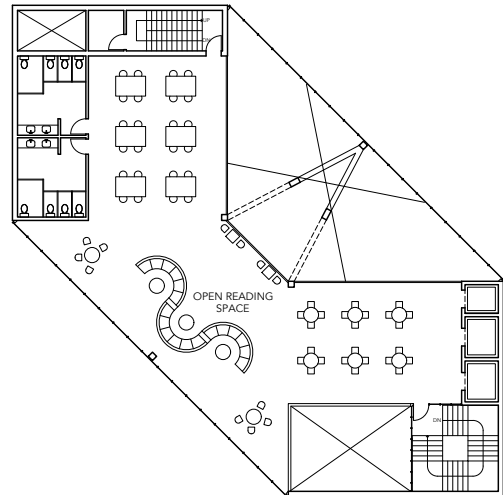
7TH FLOOR



8TH FLOOR



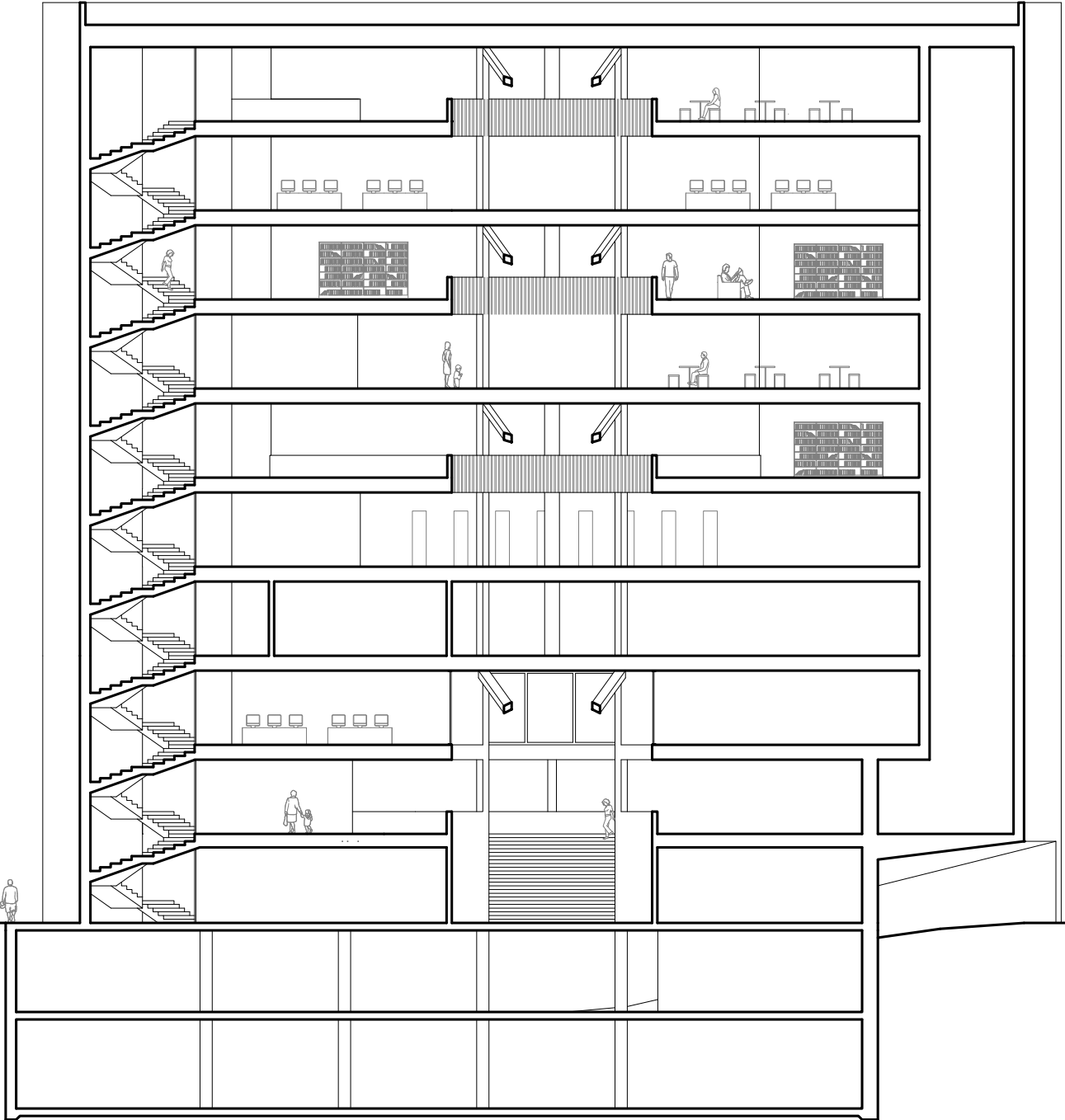
9TH FLOOR



10TH FLOOR



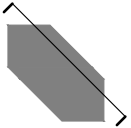


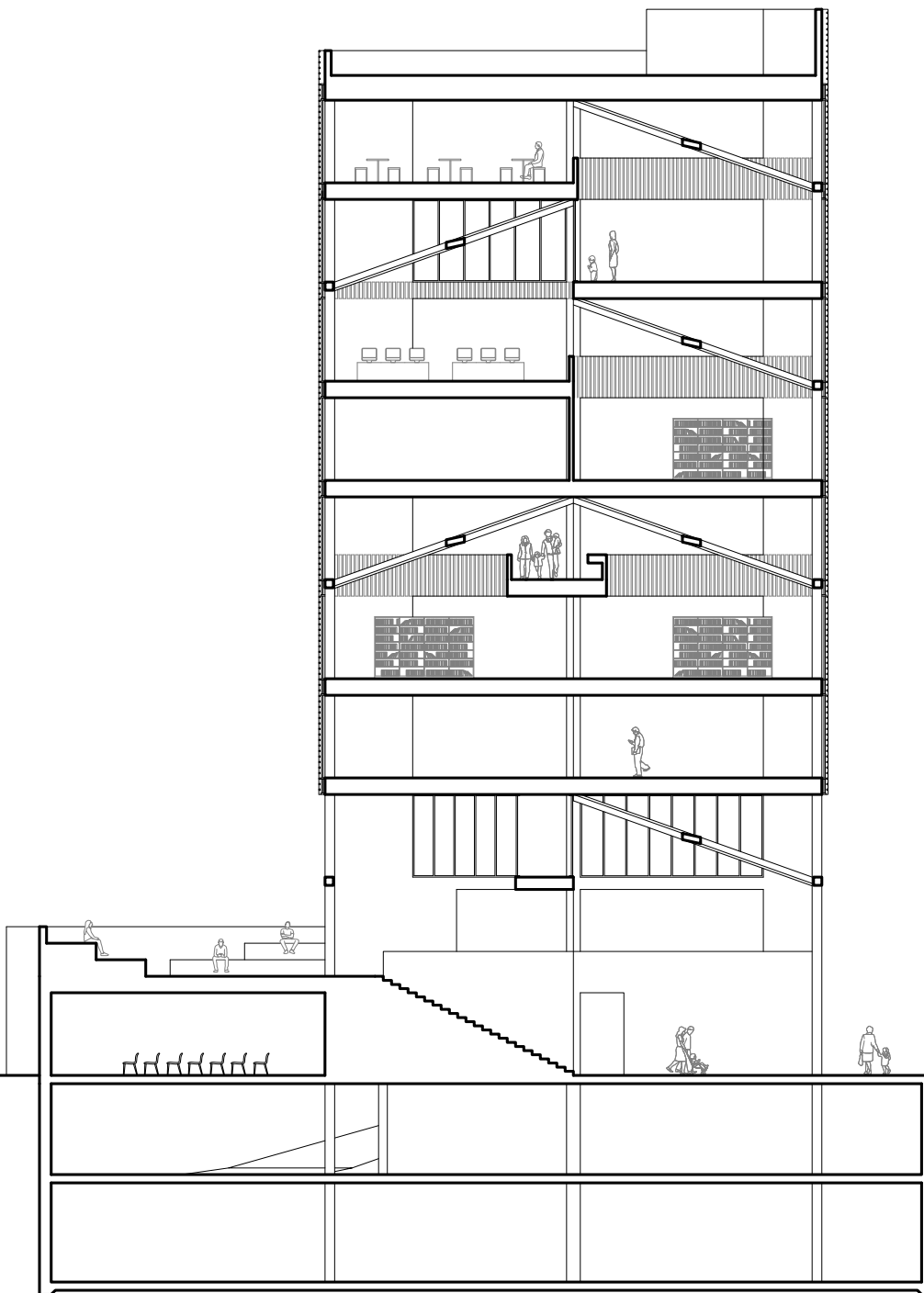


SECTION AA

SCALE: 3/64" = 1'

0' 10' 20' 40' 60'

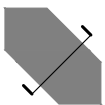




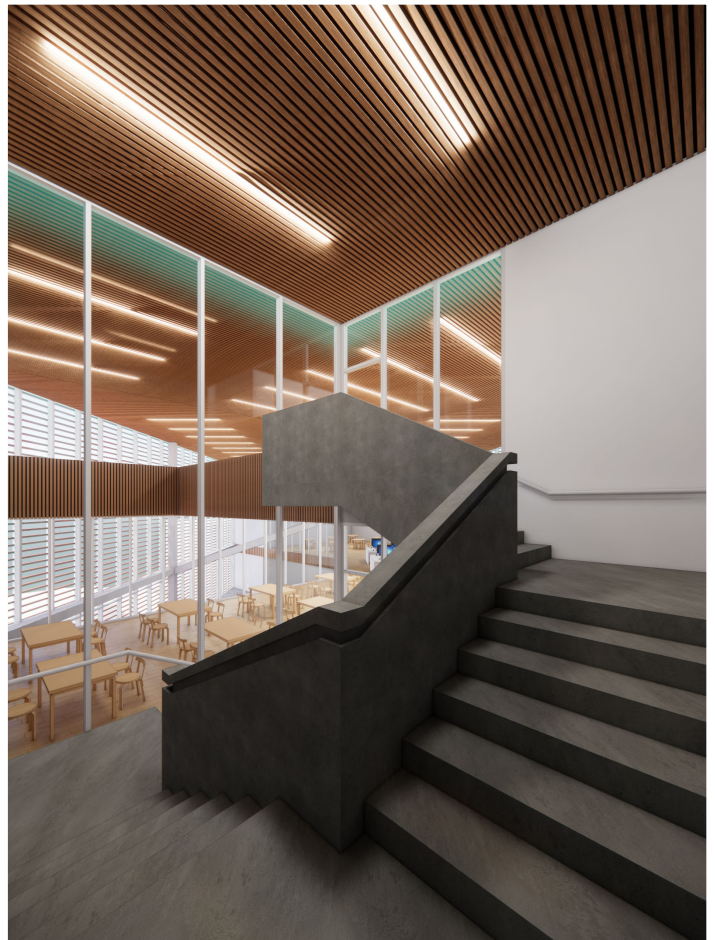
SECTION BB

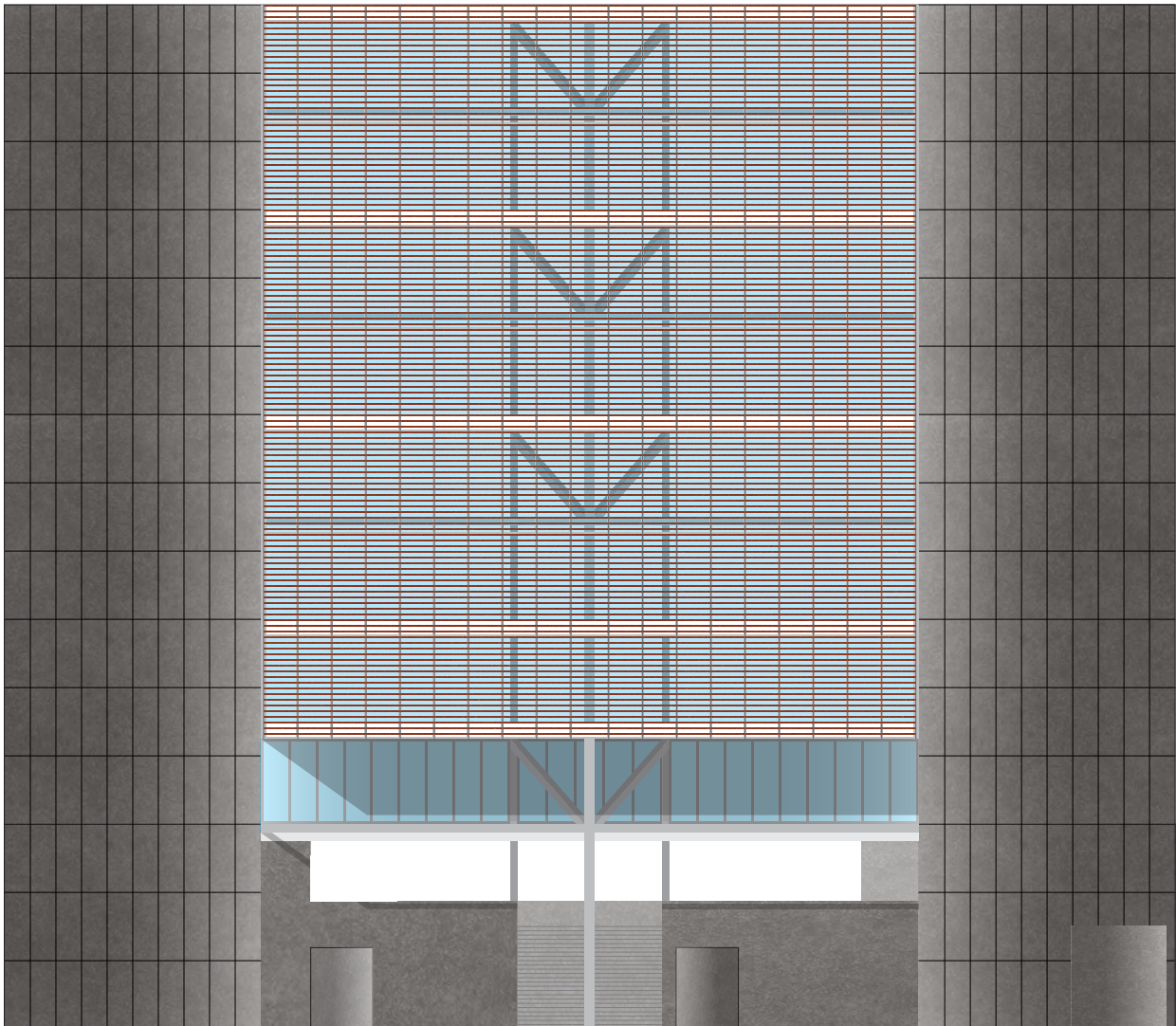
SCALE: 3/64" = 1'

0' 10' 20' 40' 60'









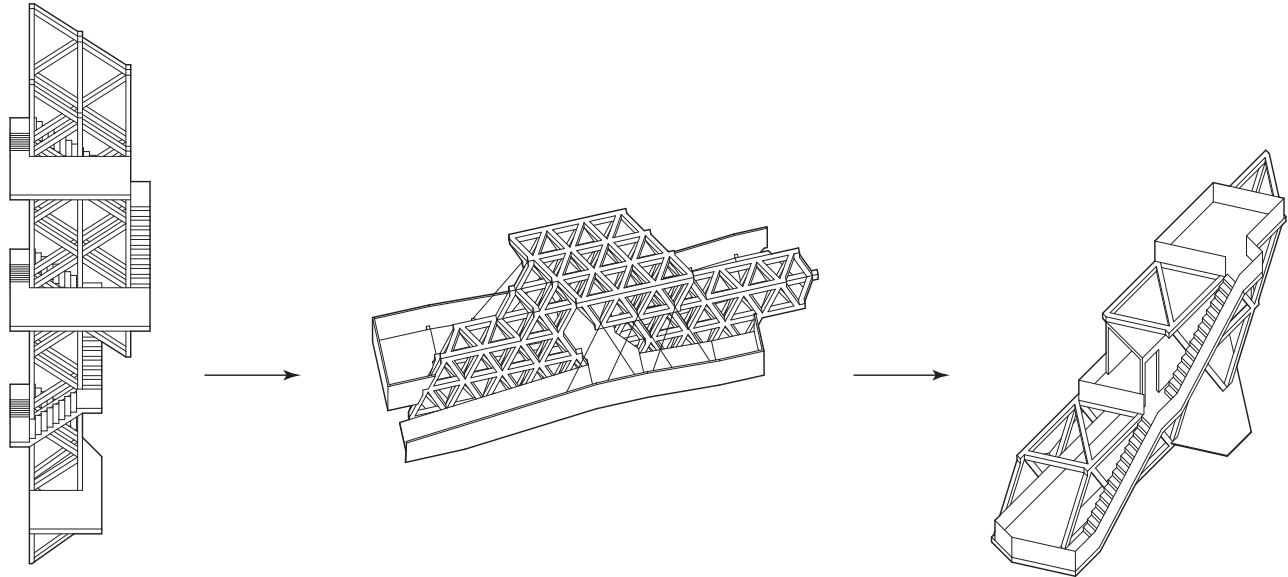






Scientist's Retreat

MT. WILSON

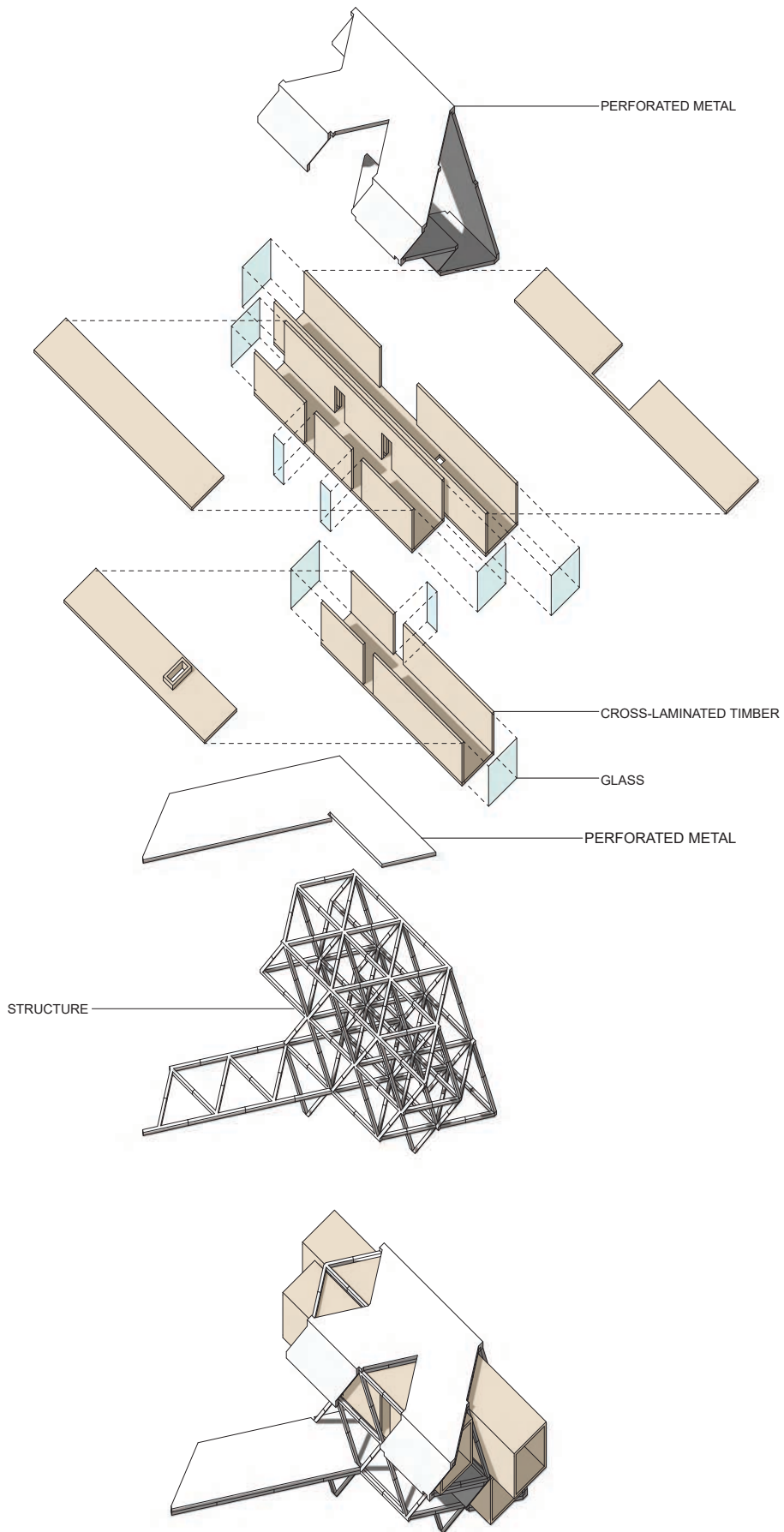


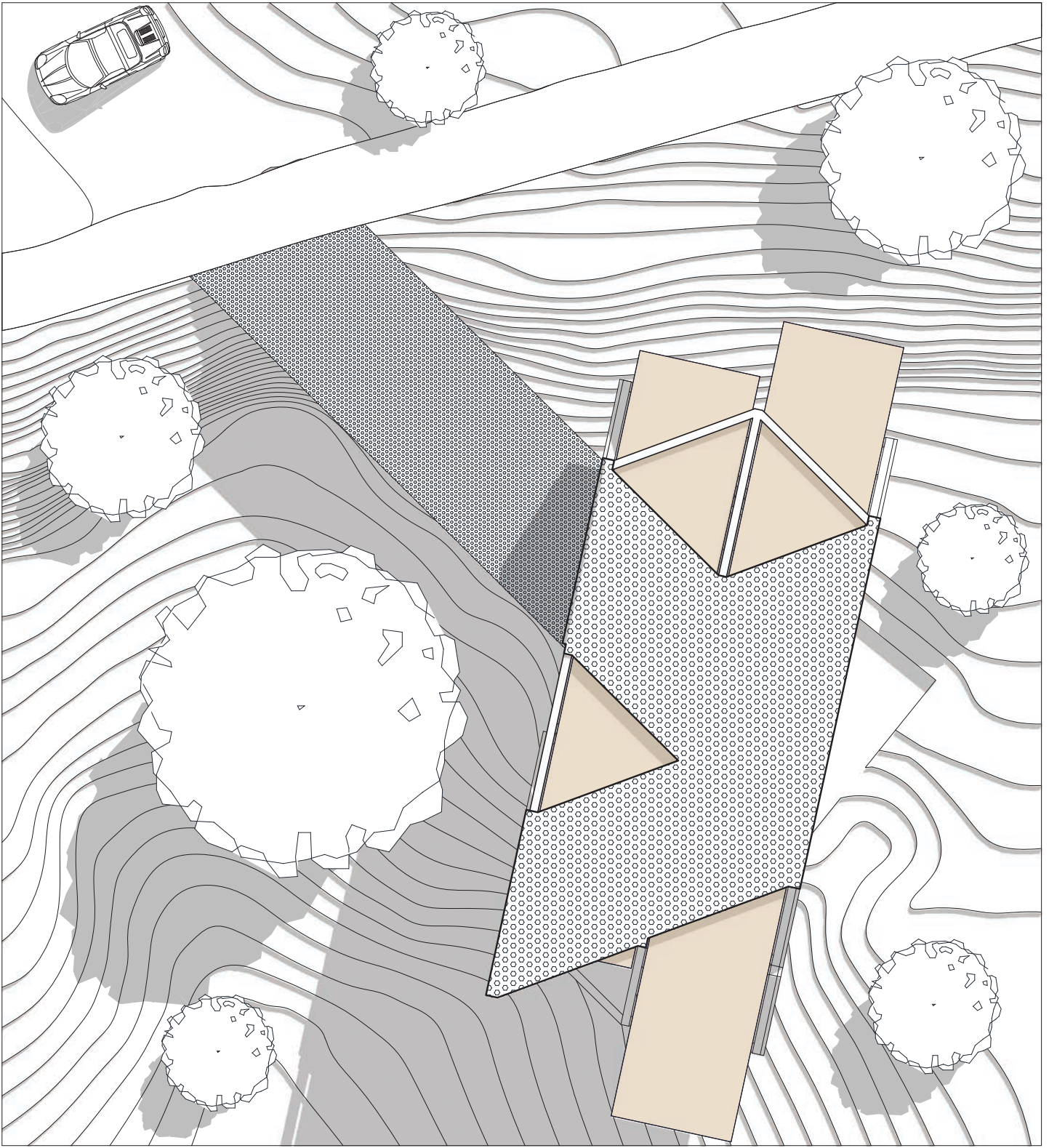
From previous exercises, the truss system was developed through a tower, bridge, and cantilever to create the over-all structure for the project. With the previous exercises, the truss system dictated the form of the project whereas the truss system is used as a structural rack for the cross-laminated timber tubes to be slid into place. The tubes in turn determine the form of the project.

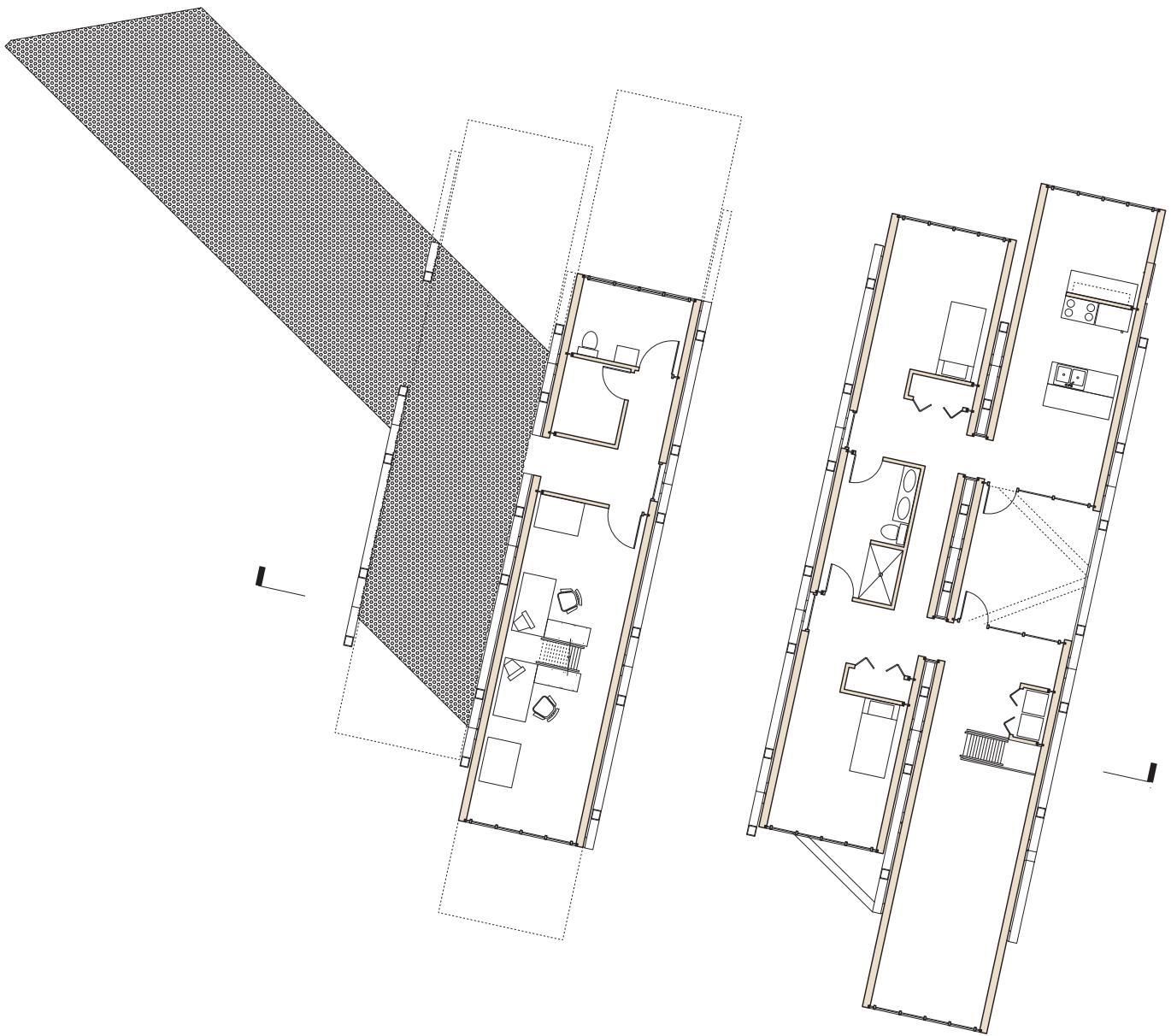
The project addresses the site by avoiding the trees when bridging over from the road to the structure. The CLT tubes address the site by connecting the project with nature.

The program is divided up into three tubes consisting of one public tube and two private tubes. The first floor consists of an outdoor public gathering space as well as the tube which houses the office and public bathroom. The second floor is entirely private with one tube housing the living spaces while the other tube houses the bedrooms and bathrooms. The living spaces are divided up by a courtyard forcing people to travel between the two tubes to access the other areas.

The main materials used are steel and wood. Steel is used as the main structure and the skin while the wood is used for the tubes

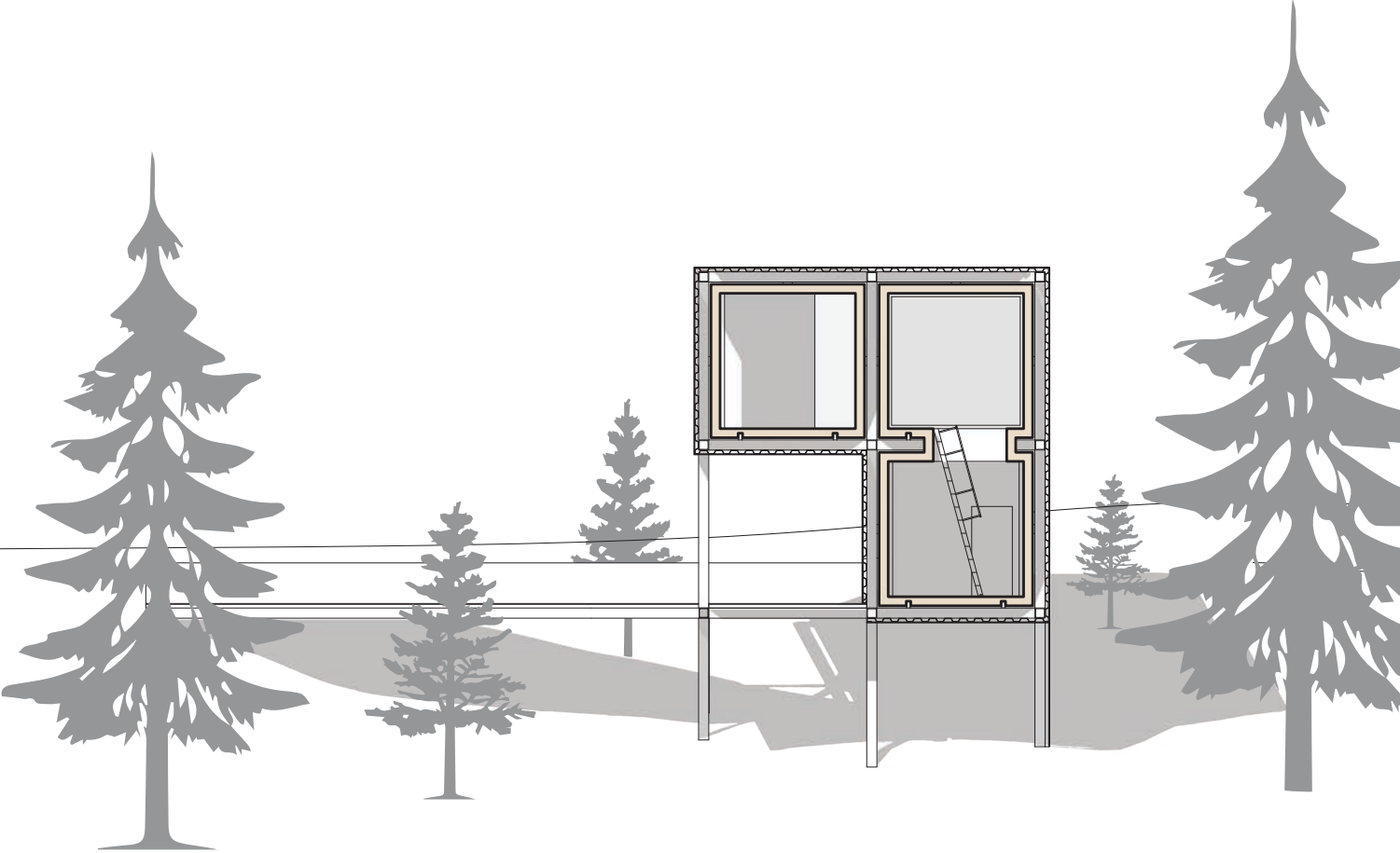


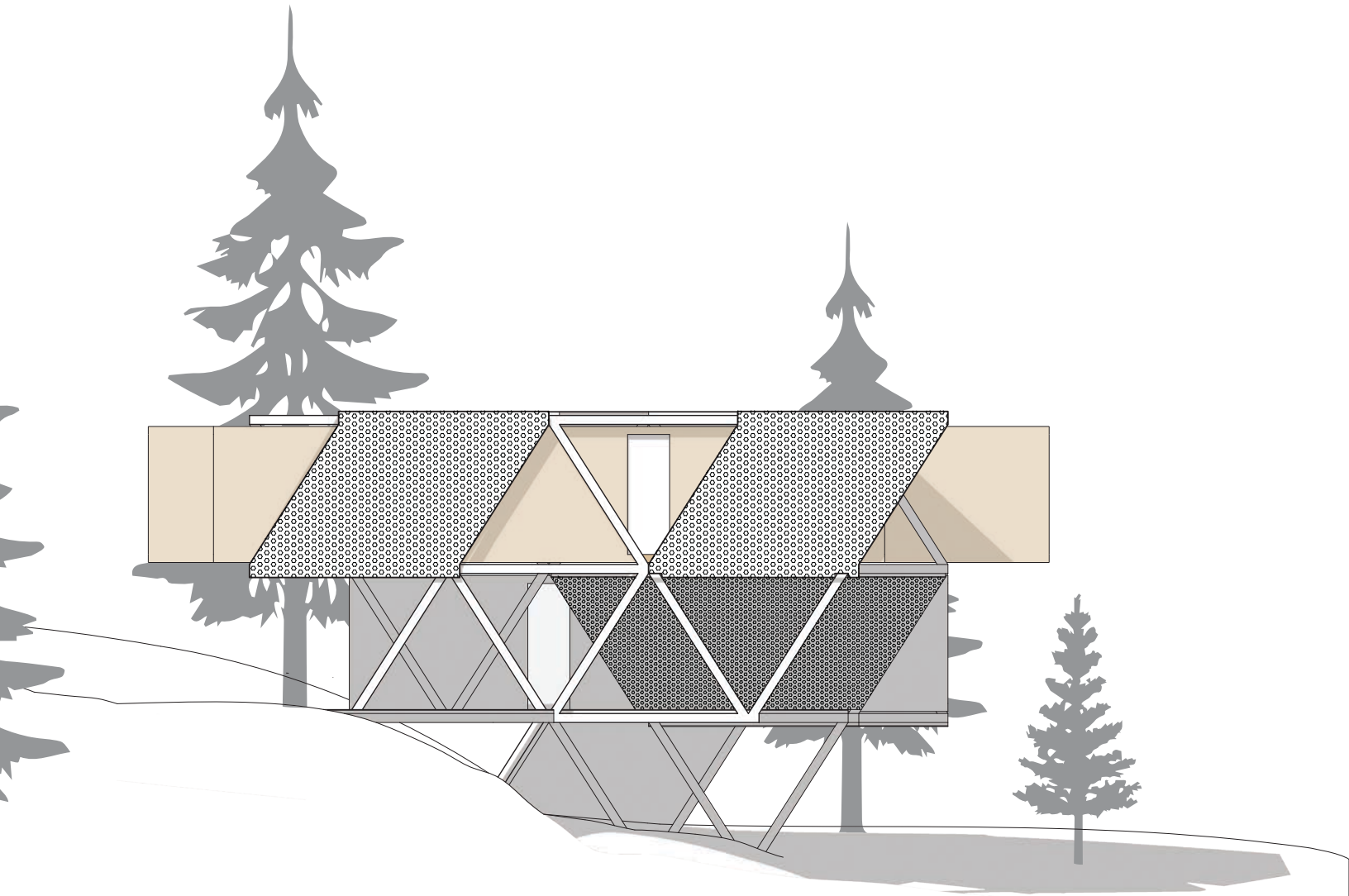


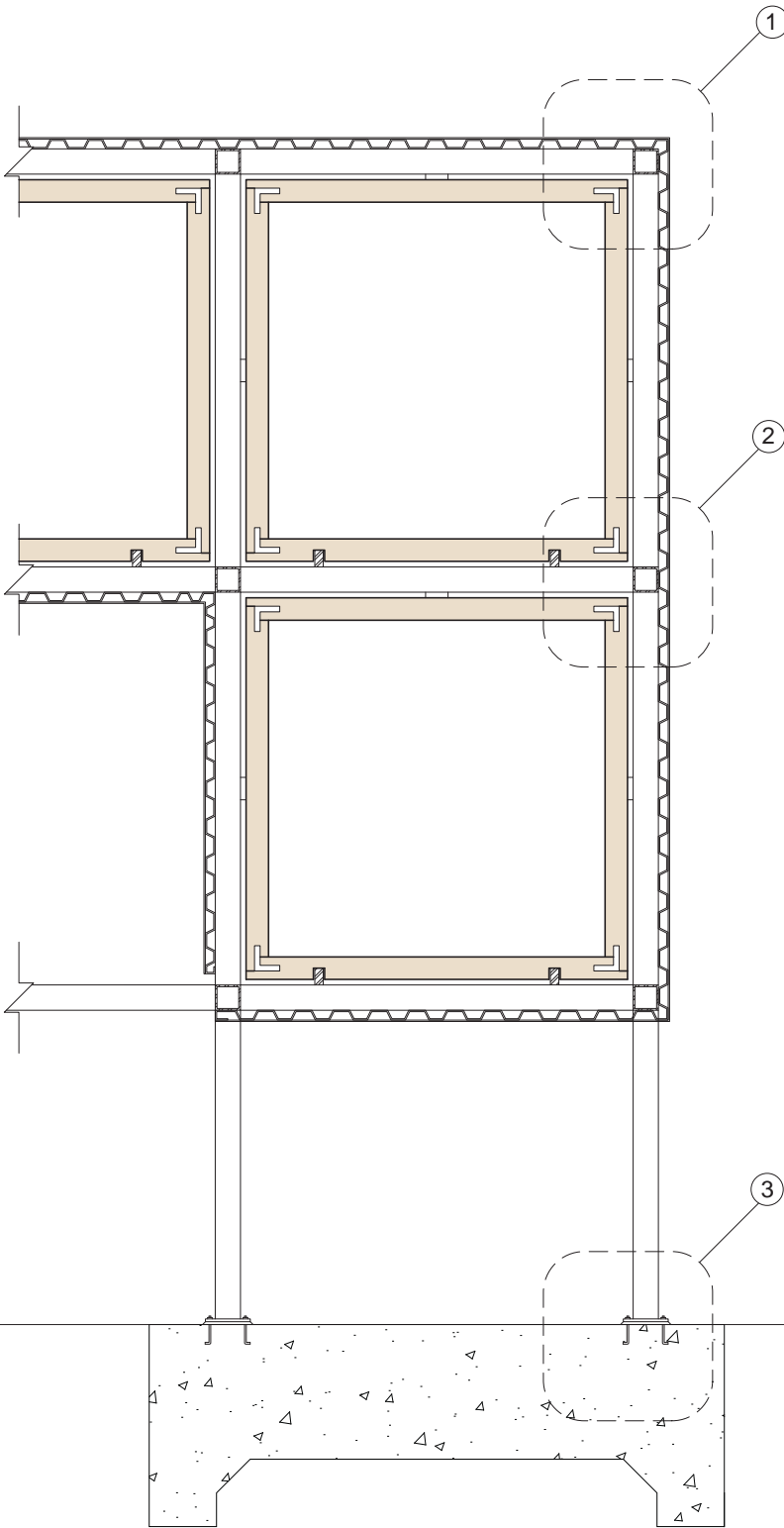


FIRST FLOOR

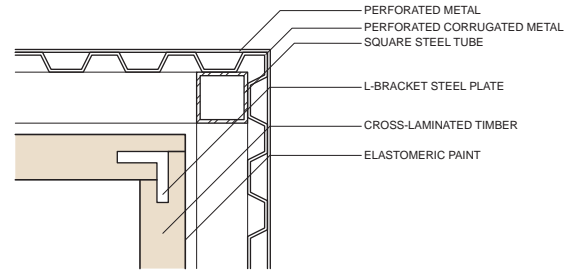
SECOND FLOOR



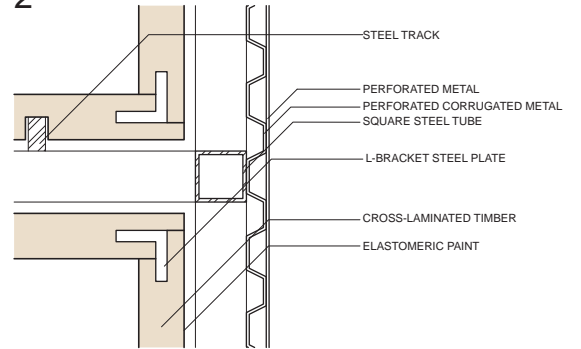




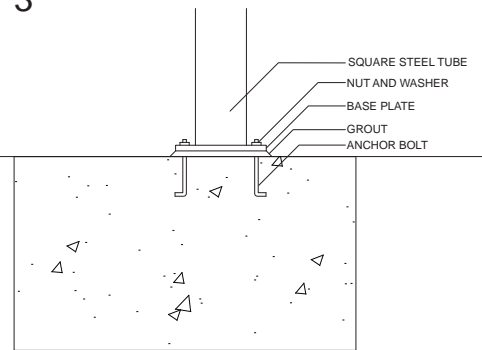
1



2



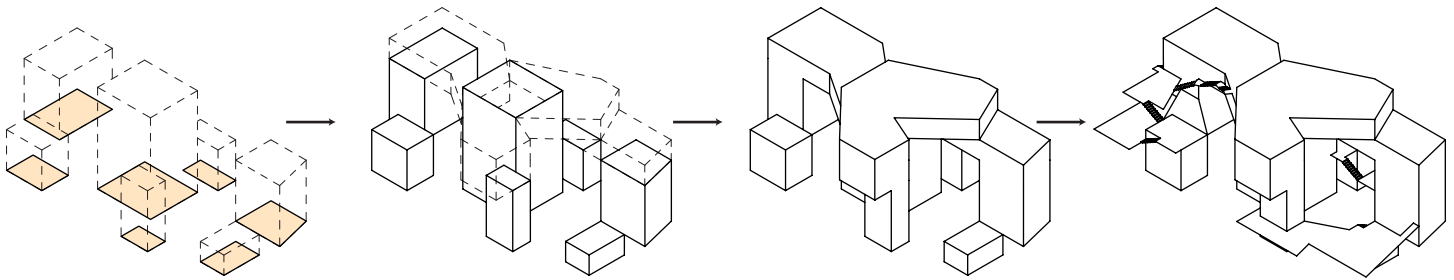
3



DETAILS

The Urban Forest

NØRREBRO, KØBENHAVN

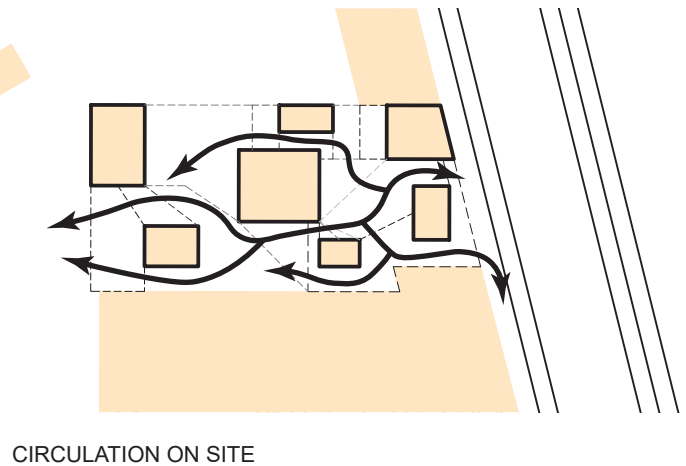
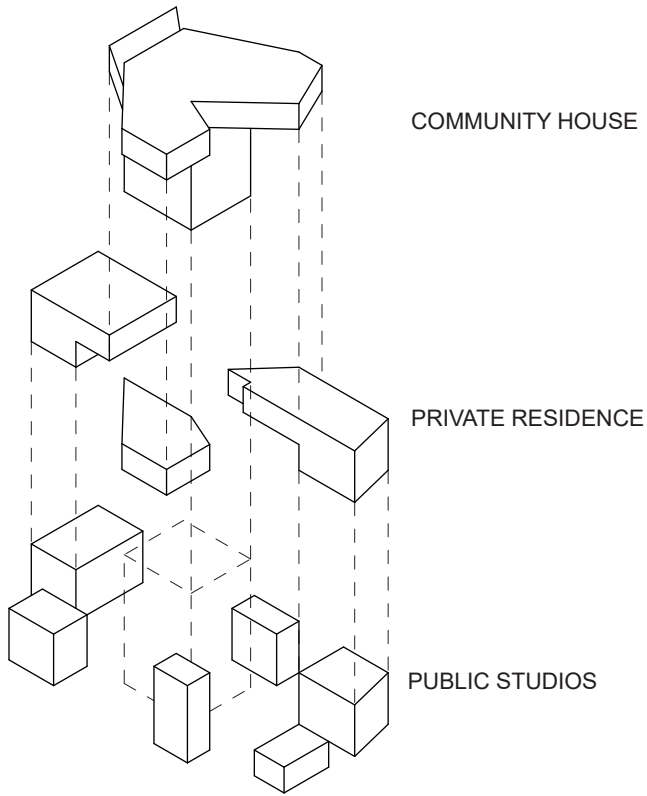


The main idea behind this co-housing project is the idea of a tree. The concept is that each building on the site acts as a tree and the entire project acts as an urban forest. The idea of creating separate buildings but scattering them along the site is inspired by the Moriama House. From there, a blanket or “canopy” was laid over the buildings to physically connect them from above.

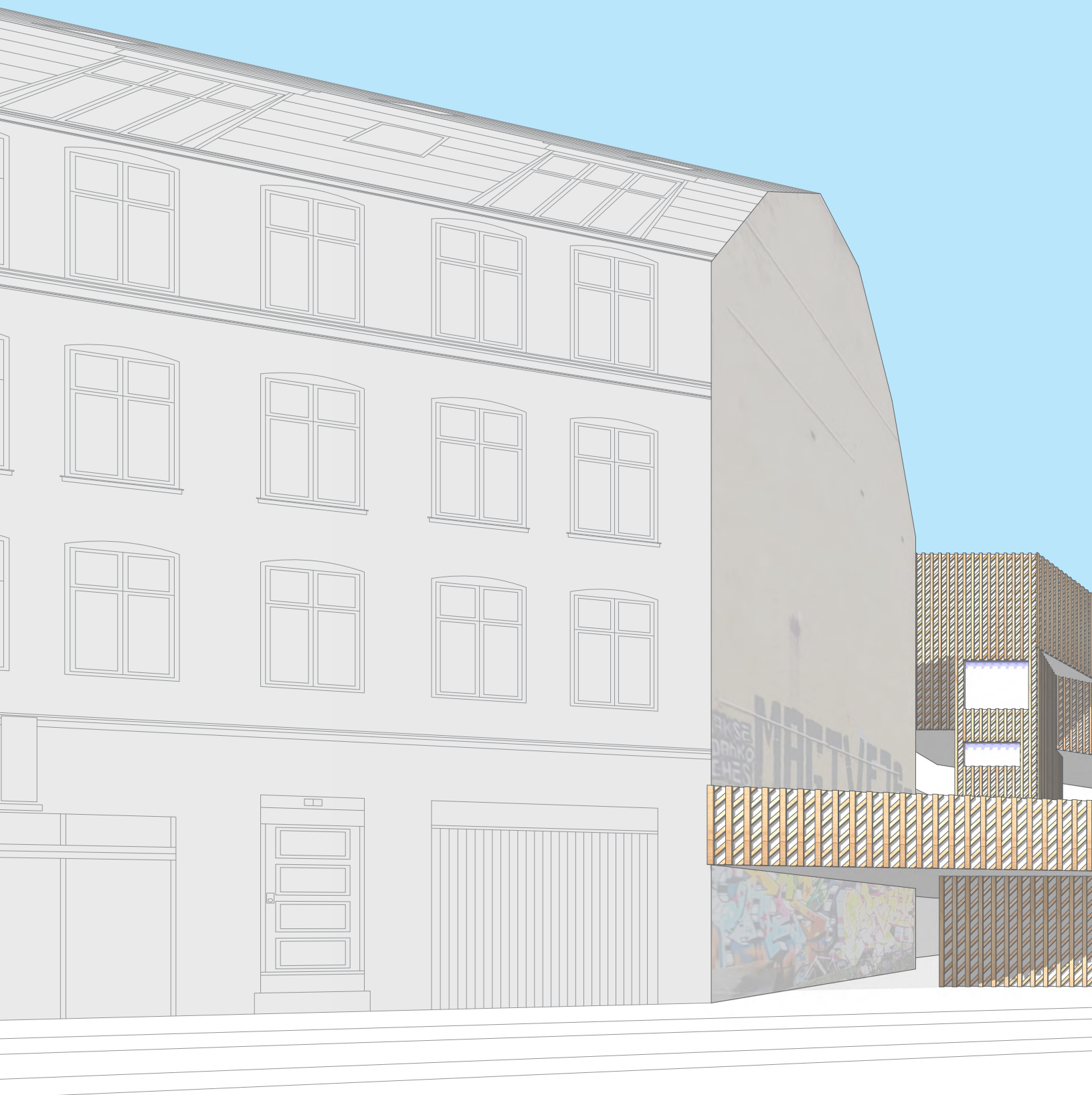
By scattering the buildings, the ground floor becomes open and allows for free circulation in and throughout the site. This allows for most of the ground to be untouched while allowing people who are biking or walking to freely pass through. All of the public studios are located on the ground floor with the community house and restaurant being located in the middle.

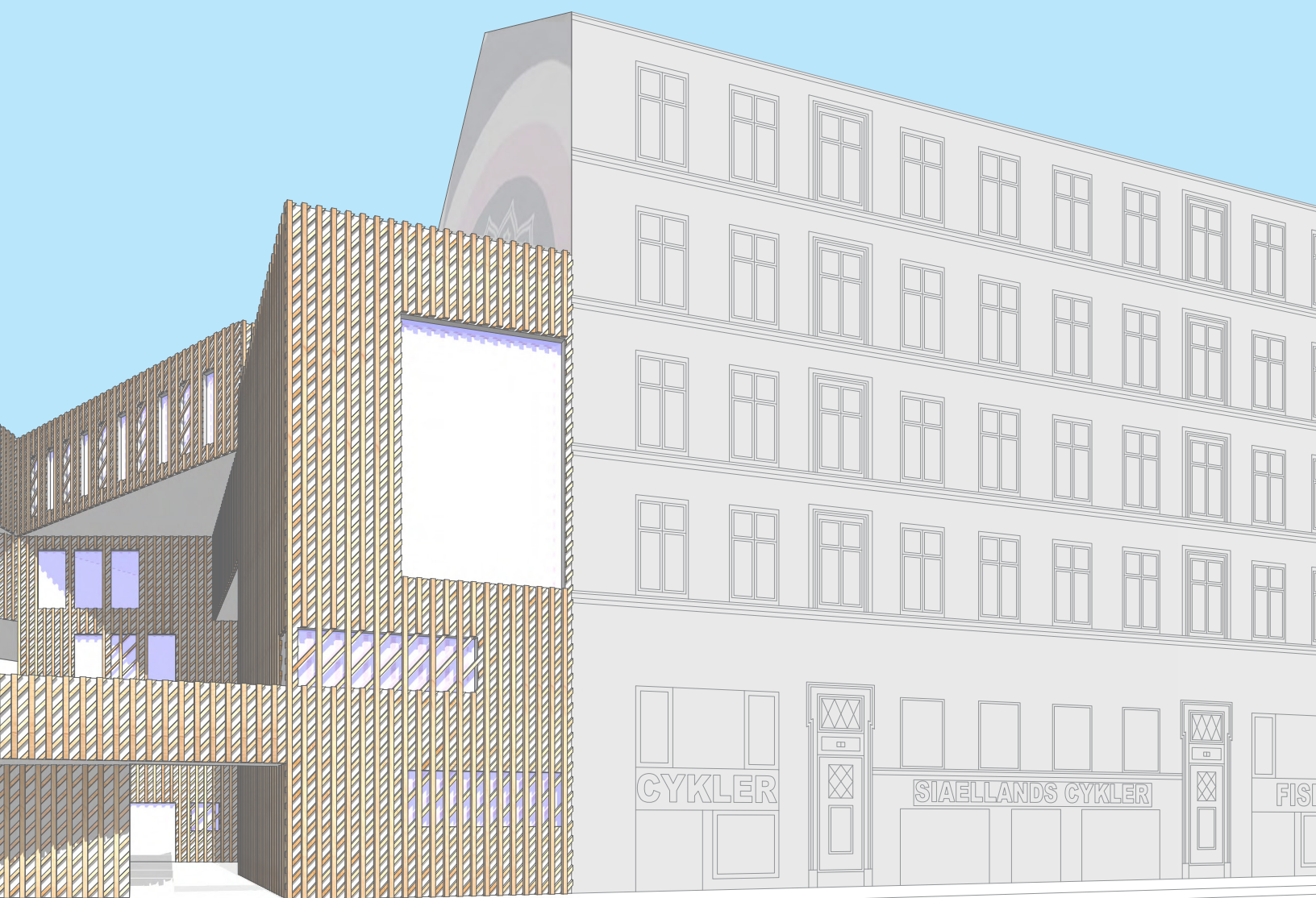
This creates the aspect of having the community be the center of the project and connecting the entire site together.

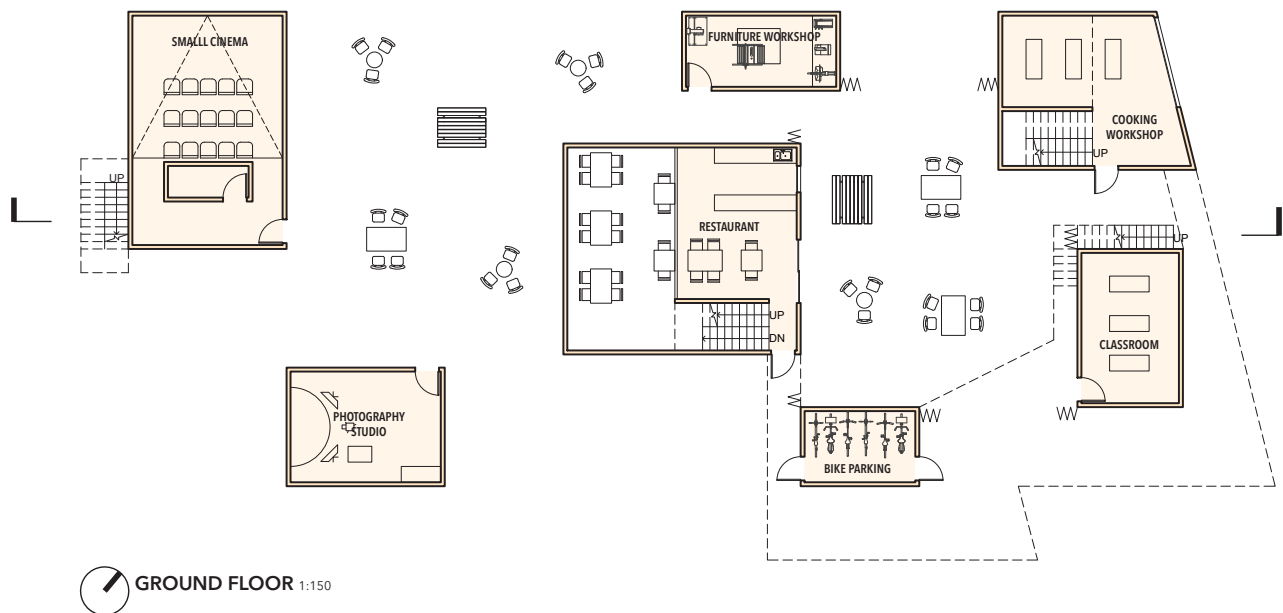
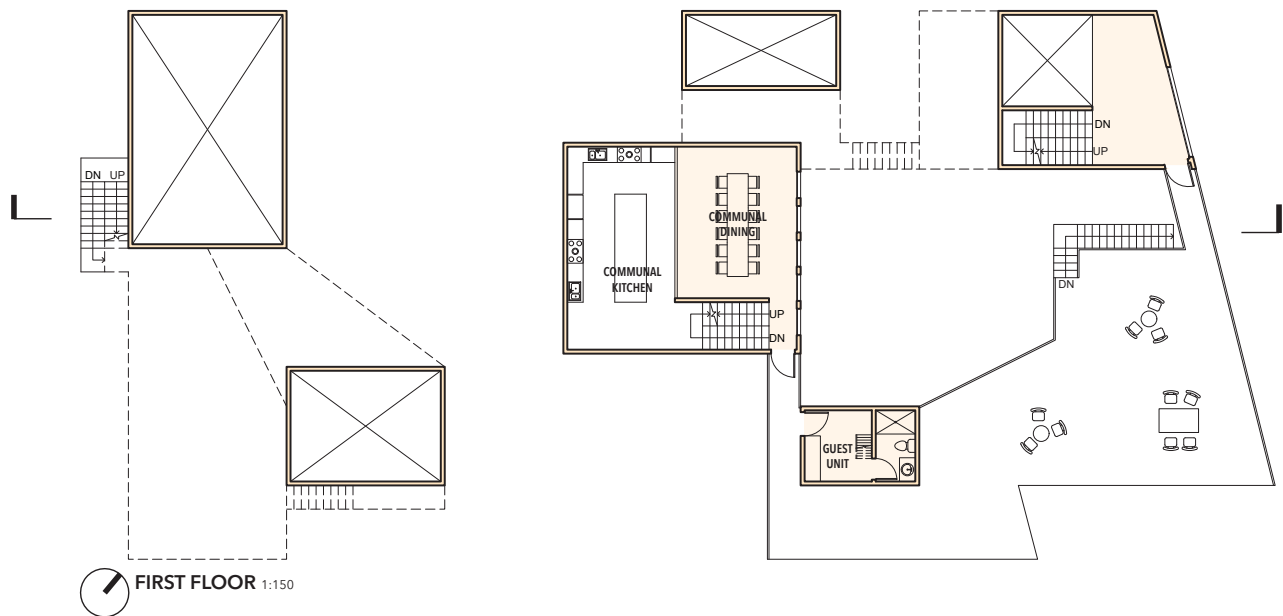
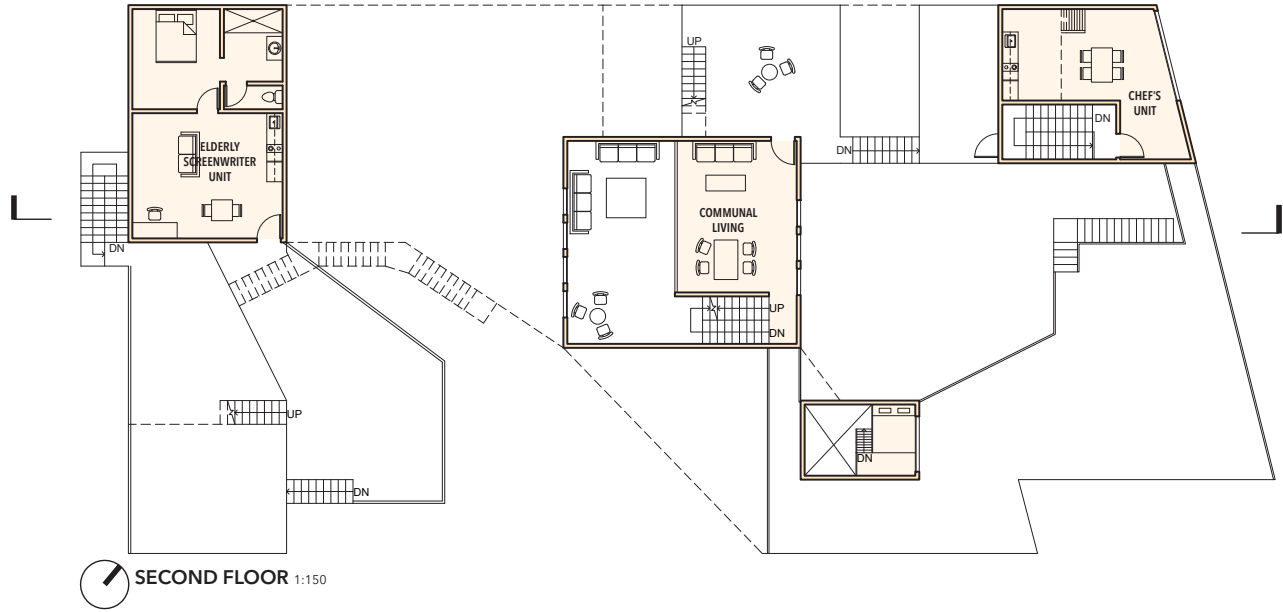
The community house consists of half levels to create thresholds and the ability to look down or up at the other people of the community. This creates opportunities for people to converse. The residential units are located in the canopy and this allows a sense of privacy from the outside by having them be elevated high off the ground. This also allows the residents to be able to move through the building to get to certain spaces without having to touch the ground floor. The exterior façade is created by using two layers of wooden slates, one slanted at 45 degrees and another that is straight.

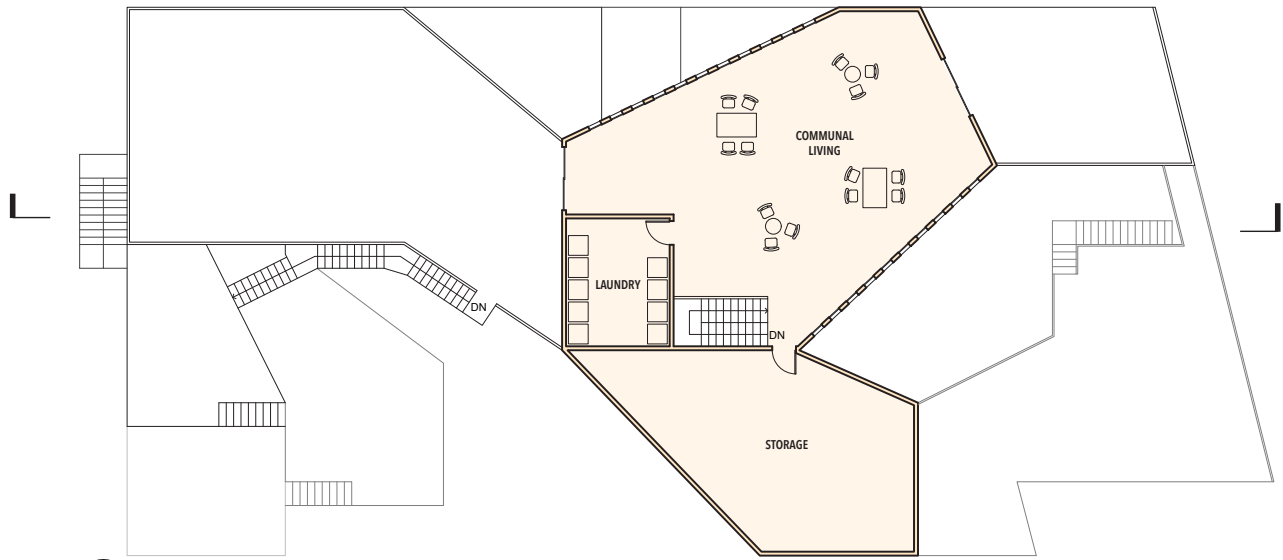


SITE PLAN 

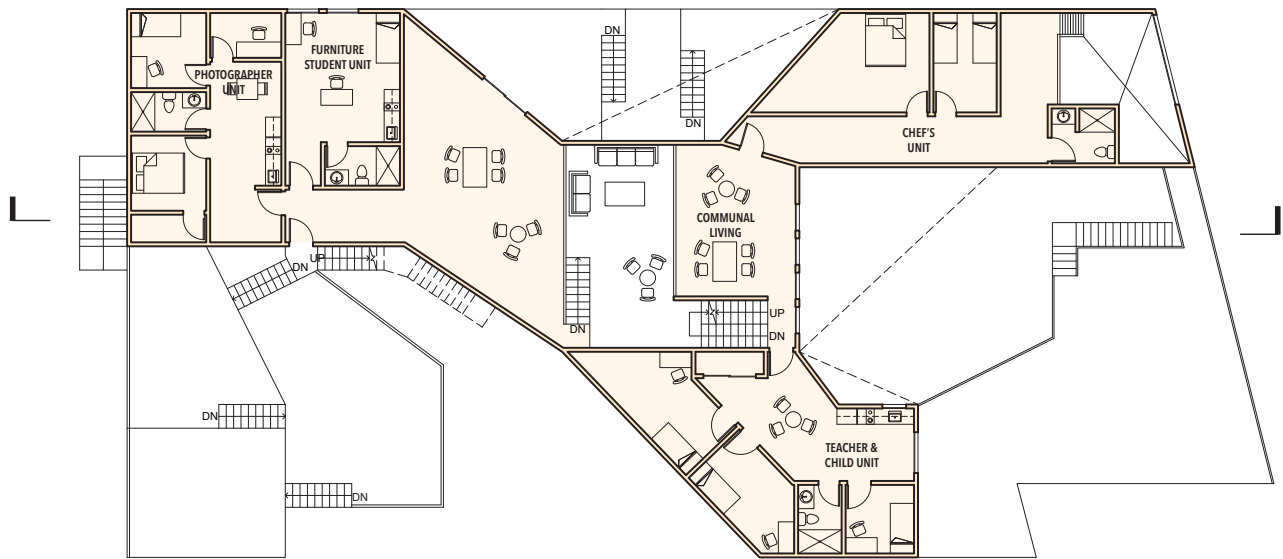




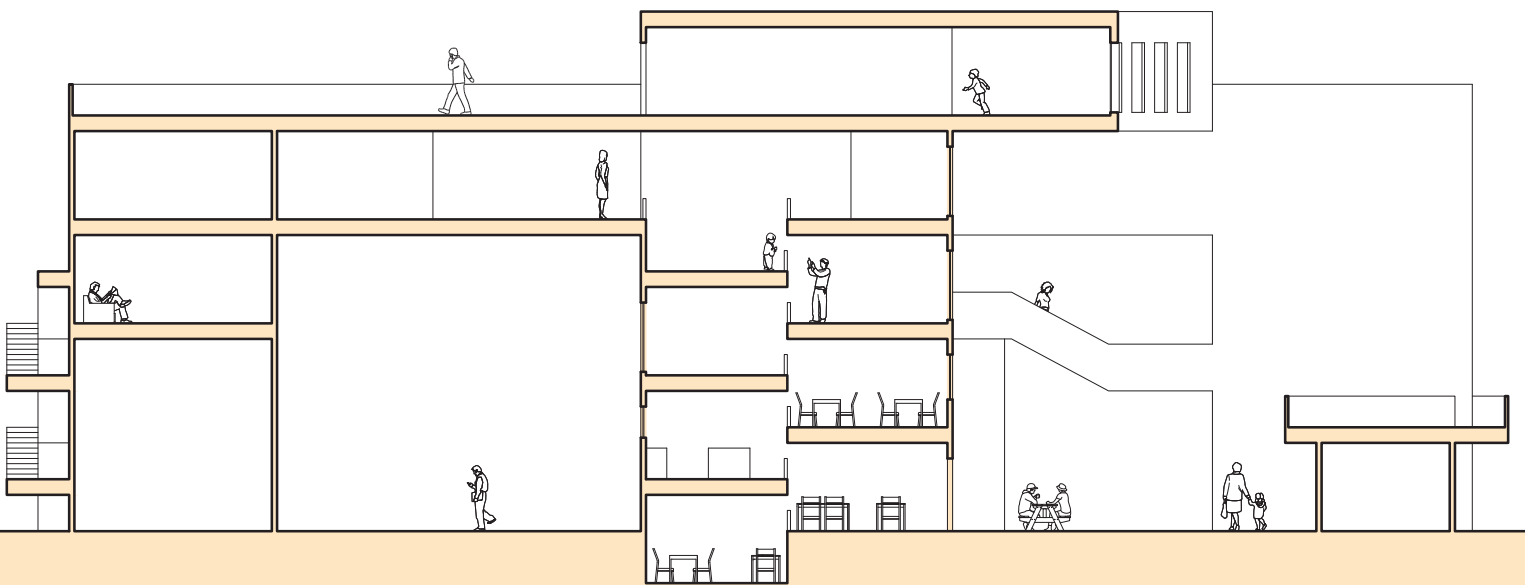




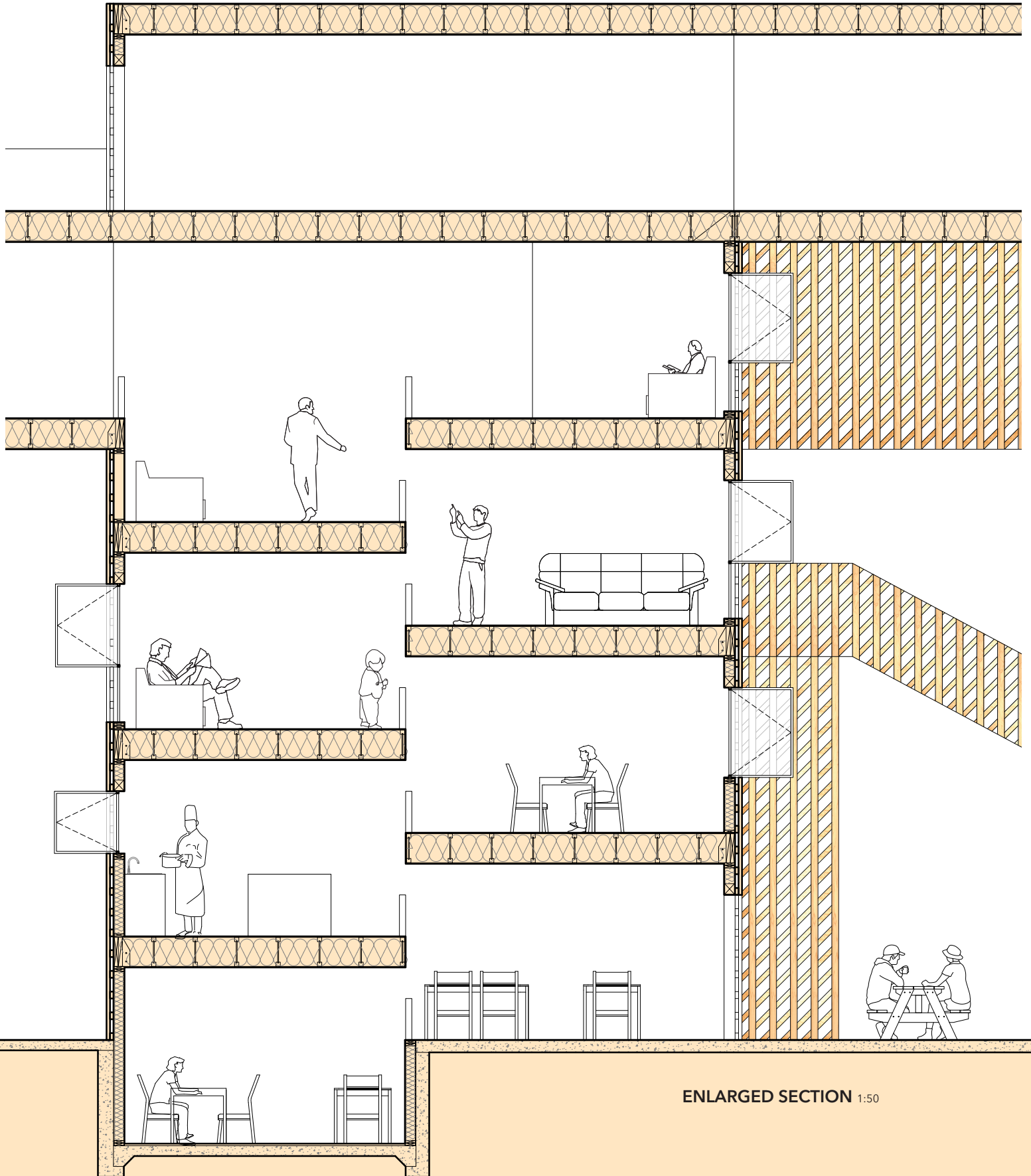
ROOF / ATTIC 1:150



THIRD FLOOR 1:150



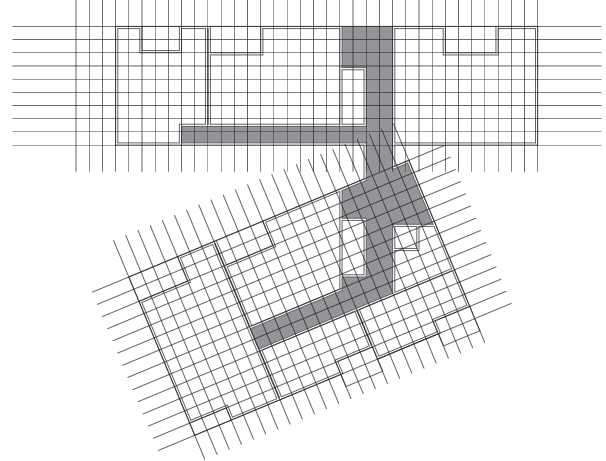
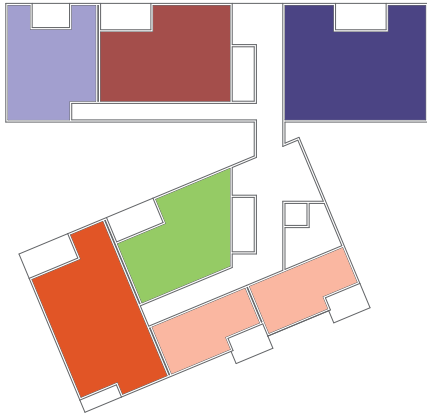
LONGITUDINAL SECTION 1:150



ENLARGED SECTION 1:50

Mixed-Use Housing Project

WEST HOLLYWOOD

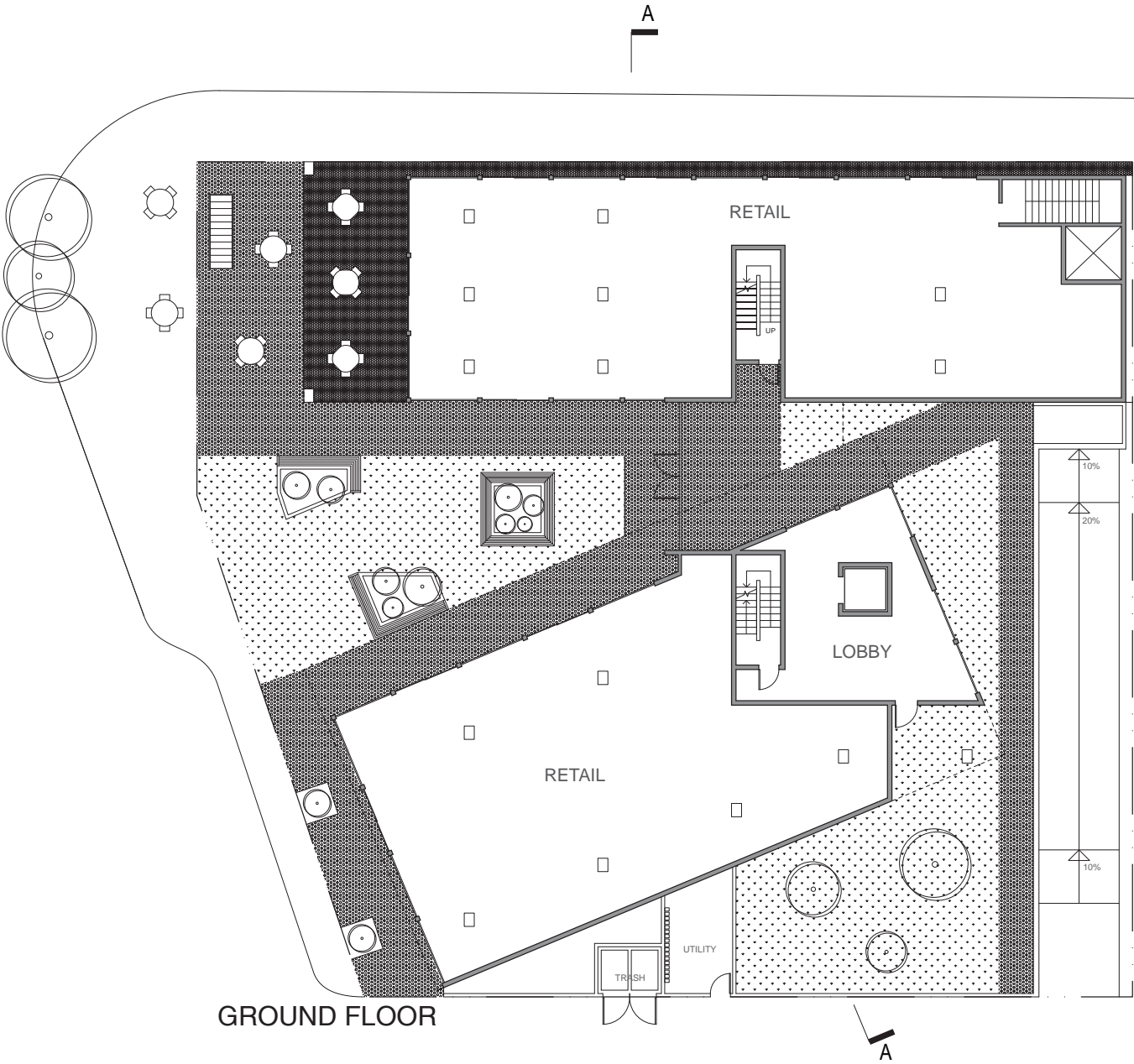


UNIT TYPES	# OF UNITS	# OF BEDROOMS	# OF BATHS	INT SQFT	EXT SQFT
STUDIO A	6	1	1	423.61	96
STUDIO B	4	1	1	646.83	128
1 BED A	3	1	1	818.7	128
1 BED B	4	1	1	1010.92	128
2 BED A	3	2	2	1173.53	176
2 BED B	4	2	2	1345.78	128

The project consists of two slabs that sit on top of podiums that are used for commercial spaces. The south slab is rotated to allow for a courtyard in between the two buildings with a bottle-neck that separates the public spaces from the private spaces of the residential units. The entire project is dictated by a 4 by 4 grid. The two slabs are connected by a bridge.

The facades are lined with cement fiber boards to emphasize the length of the slabs. The cement fiber boards are laid out in different sizes to create a breathing effect on the facade. The windows and balconies were laid out in a way so that there would be different “holes” of different proportions.

The project has 24 units that consist of studios, one-bedrooms, and two-bedroom units. There are 2 different units for each housing type. Each unit is outlined in the above diagram. The north slab houses the bigger units as it is directly on Santa Monica Blvd. The south slab houses the smaller units but has more due to the circulation mainly being in that building.





SECOND FLOOR



FIFTH FLOOR

West Hollywood Mixed-Use Housing

