


STEPHANIE DELGADO

2010 - 2022



a

INTERNATIONAL ARCHITECTURE PROJECTS

- ATRIA VILLAS
- KSAMIL VILLAS
- LANDMARK NICOSIA
- ZED EAST
- ZED WEST - PHASE 4
- SAINT GEORGE

b

ARCHITECTURE PROJECTS PERU

- COURTYARD HOUSE III
- HILLSIDE HOUSE II
- BELMOND RIO SAGRADO HOTEL
- BELMOND ZAFIRO AMAZON CRUISE
- HYATT HOTEL AND OFFICE
- TEACHER HOUSING PROTOTYPES

c

RESEARCH PROJECTS

- JOSE GARCIA BRYCE
- DO-GOOD ARCHITECTURE
- NEW PERUVIAN ARCHITECTURE ARCHIVE
- TEACHER HOUSING GUIDELINES

a



ATRIA VILLAS
MASTERPLAN AND ARCHITECTURE

Role:	DESIGNER
Design by:	WATG
Typology:	Residential + Amenities
Location:	Ain Sokhna, Egypt
Year:	2021
In charge of:	Masterplan Design Villas Design
Project Size:	BUA 70,000 sqm 113 units.
Project Status:	Concept Masterplan and Concept Architecture finished Architecture Schematic ongoing



The Atria Masterplan consists of 113 Luxury Villas facing the Red sea on the East Coast of Cairo. As part of a bigger compound, this group of Villas represent the most luxurious area of the development with 5 Villa typologies that vary in height and also in it's distance from the shoreline.

The main trigger for the Masterplan was to provide an area with the least vehicular roads between the units in order to provide a majority of green areas and gardens that can connect directly to the beach through a pedestrian and cycling route. The connection to a green central spine where the Clubhouse is also allocated prioritises the wellbeing of the community whilst giving a striking view from the Masterplan entrance.

The Architecture for the Villas, that have access from the unit's front or back depending on their position on the Masterplan, focused on achieving a clear sea view from the social spaces of the house along the five rows of units. The site levels were accommodated to achieve this and the social areas were located on the upper levels. The pools were also raised to ensure the entertainment of the villas and a striking sea view.

Both Masterplan and Villas followed sustainability goals that were introduced since the very beginning of the project. The study of vernacular examples as well as the use of measurement tools to understand the wind and temperature impact on our design early stages, influenced the use of sunken patios and cross ventilation systems that became an essential part of the design.



TOP: Atria Masterplan

RIGHT: Villa Type B Plans

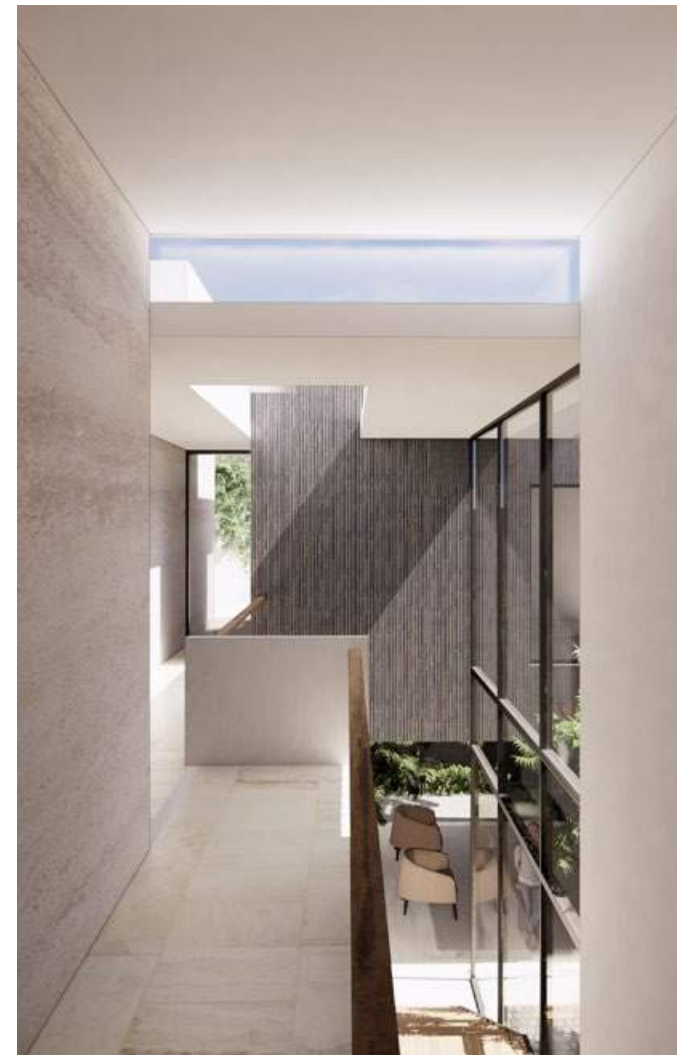
BOTTOM: Living and Dining
Internal views with ceiling
and cross ventilation detail.



TOP: Street view giving privacy to the upper garden and side entrance.

BOTTOM: Upper garden and Terrace.

NEXT PAGE: Villa corridor views and courtyard views prioritizing natural light and ventilation.





KSAMIL VILLAS
MASTERPLAN AND ARCHITECTURE

Role:	DESIGNER
Design by:	WATG
Typology:	Residential + Amenities
Location:	Ksamil, Albania
Year:	2021
In charge of:	Masterplan + Clubhouses Design
Project Size:	BUA 92,400, Land Area 26 Ha
Project Status:	Concept Masterplan and Concept Architecture finished Architecture Schematic ongoing



The Ksamil Village site is located very close to the centre of Ksamil, in the southern Riviera of Albania. With an extensive waterfront and a rockier sloped terrain, the site extends on a peninsula that offers 180 degrees panoramic views out over the Ionian Sea.

Such a stunning location gave the project a strong sense of identity. The use of local materials with clean simple geometries and an emphasis on large terraces laying on top of this topography, resulted in a Masterplan with a variety of villas and apartments designed in clusters with their own specific amenities. The two clubhouses and retail areas become the heart of these communities and the design language goes according to the same principles.

The masterplan also included an international hotel with 120 keys. This building was located in the lower part of the peninsula with access to the beach providing all guest rooms with a sea view and balcony. The massing of the hotel is carefully placed so it won't block the views from the surrounding villas and emphasises the coast line shape with a pier at the end.



TOP: Ksamil Masterplan

RIGHT: Views of Clubhouse entrance, Hotel pier and Residential Villa.



TOP: East clubhouse plan with Restaurant view and terraces with sea front views and access to the beach.

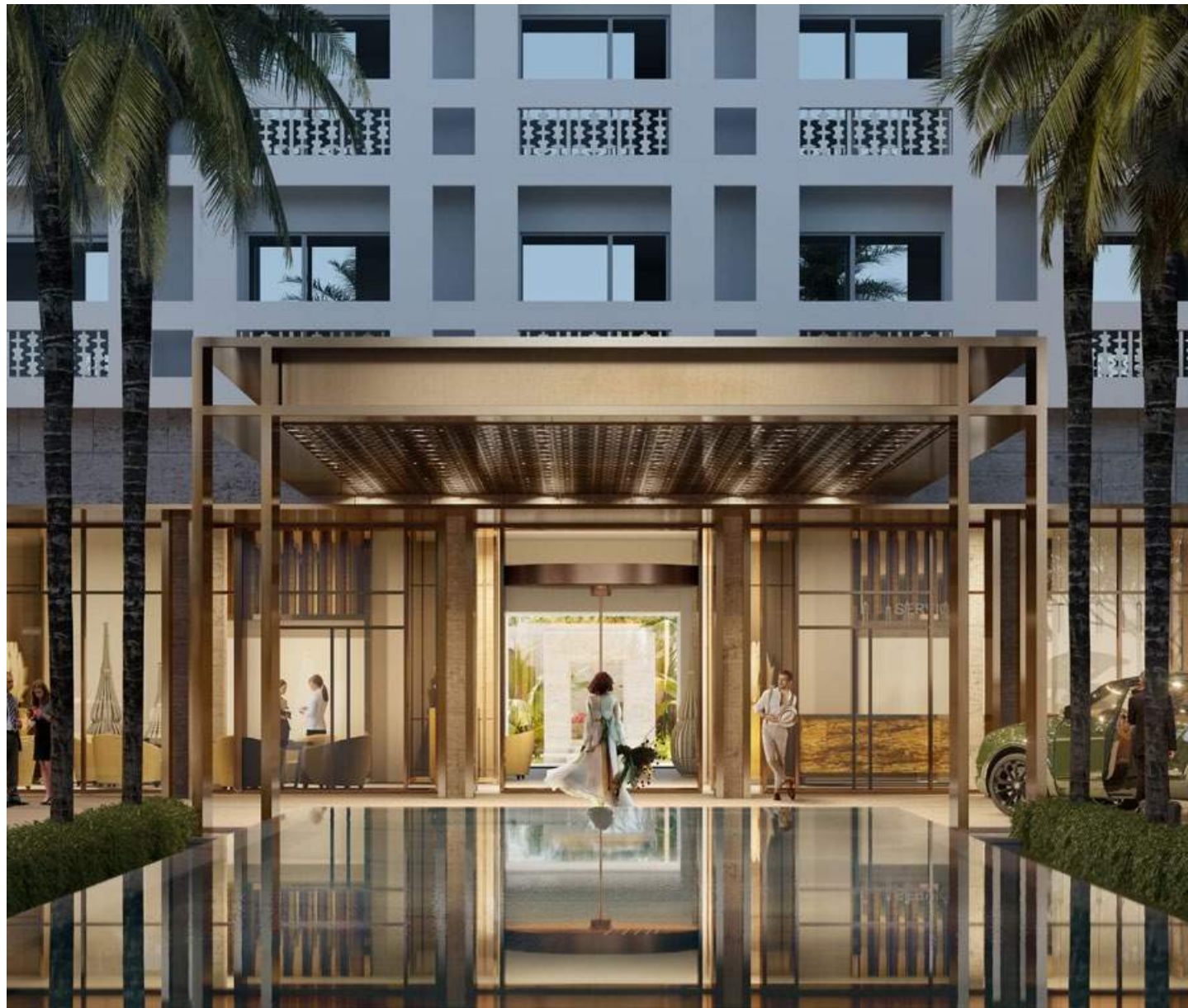
BOTTOM: West clubhouse with rooftop bar (left) and restaurants (right).





LANDMARK NICOSIA HOTEL REFURBISHMENT

Role:	DESIGNER
Design by:	WATG
Typology:	Hospitality
Location:	Nicosia, Cyprus
Year:	2020
In charge of:	Hotel Renovation and Enlargement Design
Renovation Area:	1,900 sqm, Hotel 296 keys
Project Status:	Concept Architecture finished Architecture Schematic finished



The Landmark hotel in Nicosia has a particular symbolism and significance in Cyprus. This 5-star Hotel has played an important role in the country's international image since 1967 and the existing building is a strong part of its identity.

The scope of work included the refurbishment/modernization of the historic hotel, mainly of its Front of House and public areas such as: Lobby, Ballroom, Meeting Rooms, Gym and Spa, as well as the open areas such as the main terrace and the existing gardens and new Pool. The works were to be carried mainly on the GF, Basement and Mezzanine Levels, and the new design needed to be projected in a phased manner, so that the hotel remains operational during the refurbishment works. The development also included the construction of two new towers in an adjacent plot. One of the buildings was a Residential Tower and the other was an Office Tower.

We wanted to enhance the arrival experience and have the Ballroom, the drop-off and the new F&B Units as an active and open space towards the city front that was supposed to become the central space of the whole development. The decision to add new F&B units towards the existing drop-off area was a way to activate the front that currently has only parking spaces.

With the masterplan defined and the internal layout changes the client wanted a proposal that kept the Landmark distinctive facade as a focus point. For this, the design took the language of the existing facade, a waffle like grid, and reinterpreted it with the use of different materials such as metal, understanding the new components as an extension of the existent.

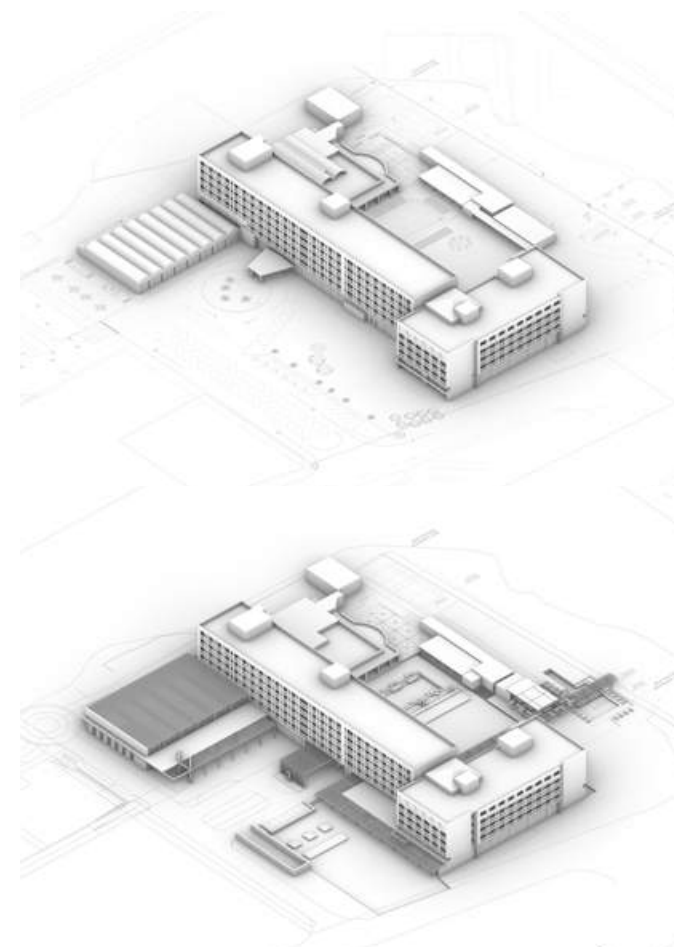


LEFT: New drop-off and lobby entrance.

TOP: New Groundfloor Plan for Hotel + Landscape strategy and new buildings.

BOTTOM LEFT: Renovation before and after diagrams.

BOTTOM RIGHT: New Office and Residential Towers.





TOP LEFT: New Ballroom View



TOP RIGHT: New F&B Units view with open square in front.

BOTTOM: Longitudinal Section showing main elevation and two new parking underground levels.





ZED EAST

MASTERPLAN AND ARCHITECTURE

Role:	DESIGNER
Design by:	WATG
Typology:	Residential + Sports Club + Offices + Commercial
Location:	East Cairo, Egypt
Year:	2019-ongoing
In charge of:	Masterplan Design, Apartments Design, Villas Design, Club Design, Commercial Design
Project Size:	Land Area: 400 Fedans, Residential BUA: 2,091,550, Number of Units: 1,953
Project Status:	Schematic Design Masterplan - Architecture finished Commercial Concept revision ongoing

Ora Developers is a leading company in Egypt who is recognized by developing luxury lifestyle destinations with unique locations and large development areas.

The triangular site for this project is located along the East Ring Road in east New Cairo very close to the New Capital. It comprises 400 feddans (161 Ha) and the target is to have 50% of the site as green open area. Uses include retail, offices and sports facilities in the core of a residential community.

The development encourages cyclists and walking circuits to run through the landscape of streets and large open courtyards. The sports club is meant to be the heart of the development as the largest in New Cairo with a variety of sports infrastructure and open air sports fields.

A commercial Area is also designated in the overall Masterplan to serve the community and also attract external visitors.

TOP: G+8 Residential Buildings Floor-plan and park views.

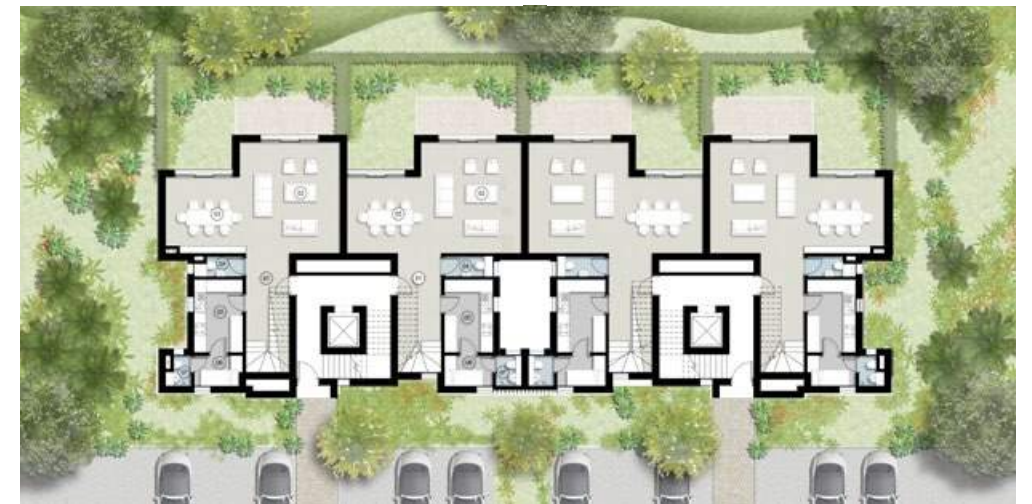
BOTTOM LEFT: Sports Club Center with Football Stadium Proposal.
BOTTOM RIGHT: Commercial Hub with shops and F&B units.





TOP: Twin Villa and
Townhouse Villa Typol-
ogies.

BOTTOM : G+3 Typolo-
gy Street and Park View.





ZED WEST - PHASE 4
MASTERPLAN AND ARCHITECTURE

Role:	DESIGNER
Design by:	WATG
Typology:	Offices + Retail
Location:	West Cairo, Egypt
Year:	2020
In charge of:	Masterplan Design for Phase 4, within ZED MP. Offices + Retail Design
Project Area:	Commercial BUA 75,000 sqm
Project Status:	Concept Architecture delivered Architecture Schematic delivered



The site is in the Sheikh Zayed City neighbourhood in West Cairo and is another project developed with Ora. The intention is to create an urban mixed-use development which will contain residential apartments, street front retail and commercial offices. The mixed use presents the project as an urban quarter more than solely a residential suburb.

In this stage of the project, Phase 4, we were requested to design the Offices Buildings with a total BUA of 56,000 m². A retail street mall in the lower floor of every building brings activity to the perimeter of the site and in addition the development includes a cinema, a clinic, F&B, children's entertainment areas as well as

The design of these office buildings took in consideration a restricted use of glass, local stone on the facade and encourage an active road with shops and restaurants on the Ground floor.





SAINT GEORGE MASTERPLAN

Role:	DESIGNER
Design by:	WATG
Typology:	Residential + Hotel + Offices
Location:	Malta
Year:	2019
In charge of:	Masterplan Design Residential Towers + Offices and Hotel
Project Status:	Concept Masterplan and Architecture delivered



The Corinthia Group owns the headland to the north of St Georges Bay which currently contains the Corinthia Marina Hotel, Corinthia Saint George Hotel and the Radisson Blu St Julians. This benchmark in the Maltese market reflects the international standards of the Corinthia brand and the new development is looking to introduce two Residential, one Office building and a new Hotel in place of the existing Marina one.

One of the main triggers in the early masterplan stages was to allow public pedestrian access all along the coast, in the bay area as well as the north side. For this all buildings allow for a colonnade on the lower floors that would be accompanied by retail and F&B outlets to activate the area and connect a series of open spaces considered in between the buildings.

This plot of land had no planning restrictions on height, however, the proposal wishes to respect the scale of the bay and the city and use an Architecture language according to the area. The use of local stone in the framing elements of every building gives a coherence with the existing hotel as well as a unity for all the development.



b



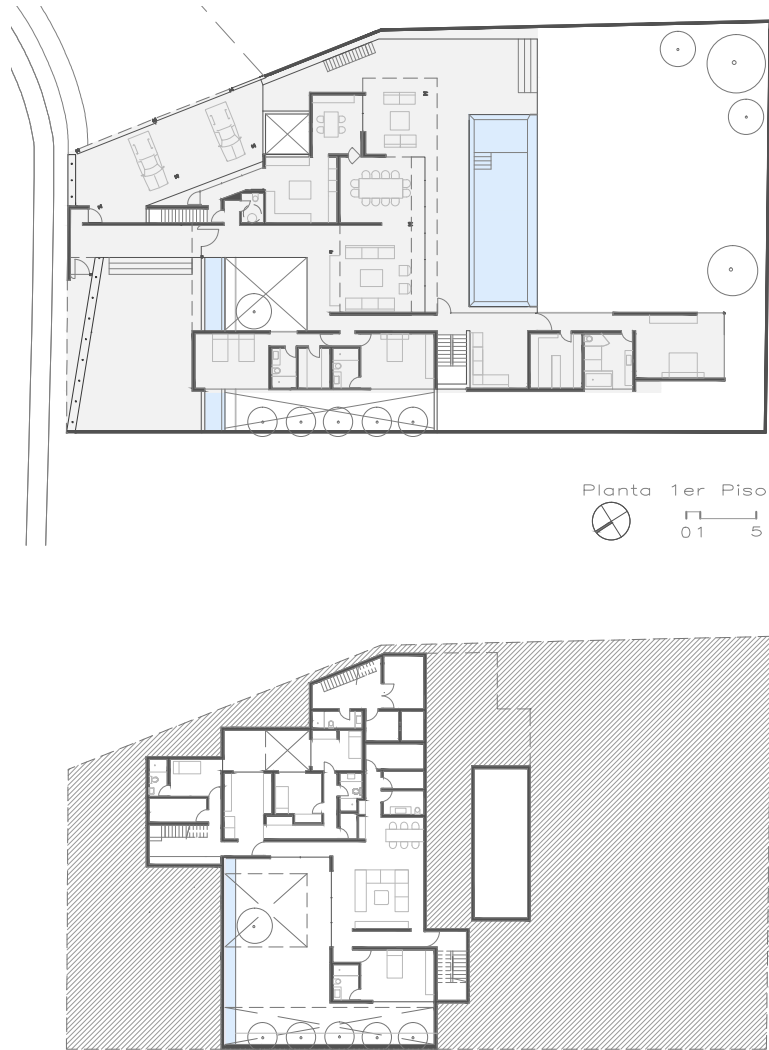
COURTYARD HOUSE III

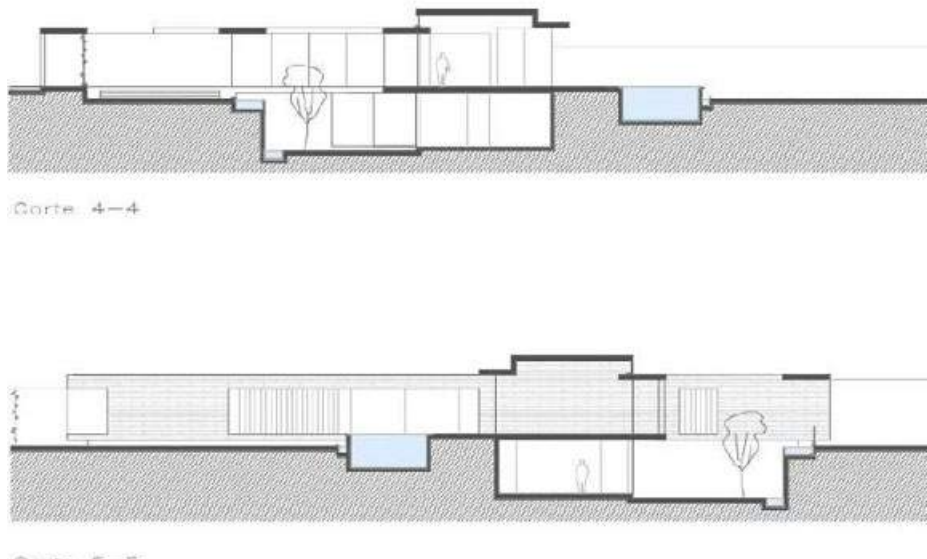
PRIVATE RESIDENCE

Role:	PROJECT ARCHITECT
Design by:	Benavides & Watmough
Typology:	Residential
Location:	Lima-Peru
Area:	600 sqm
Year:	2015
In charge of:	Architecture drawings, construction drawings, MEP coordination, on-site supervision.
Project Status:	Built

The client for this private residence requested to have the majority of bedrooms and shared spaces in a single floor whilst providing a large area for a generous garden and a swimming pool. The bedrooms were located on a straight volume on one of the flanking sides of the plot, while the living and dining room were placed perpendicularly facing the large pool and terrace.

The decision to locate a guest room for the family nephews and a large tv-room and music studio on a lower level, resulted in the opening up of a series of patios that could bring natural light and ventilation to this more intimate atmosphere. The patio ended up creating a unique entrance to the house which accentuates the transparency and openness to the green areas and the sky. The composition of the volumes and concrete finished walls generates rich spaces and works as a link between exterior and interior.







HILLSIDE HOUSE II

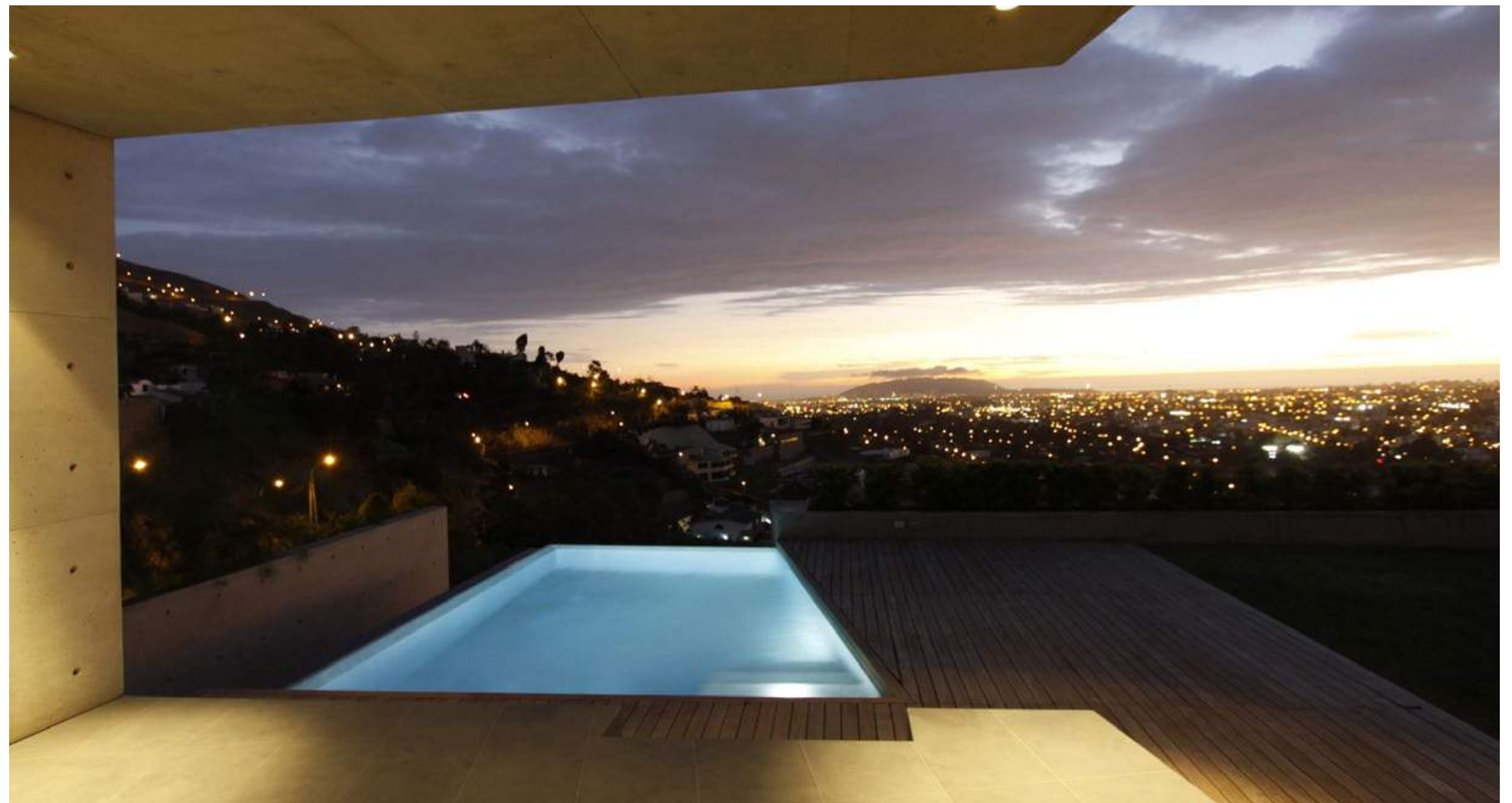
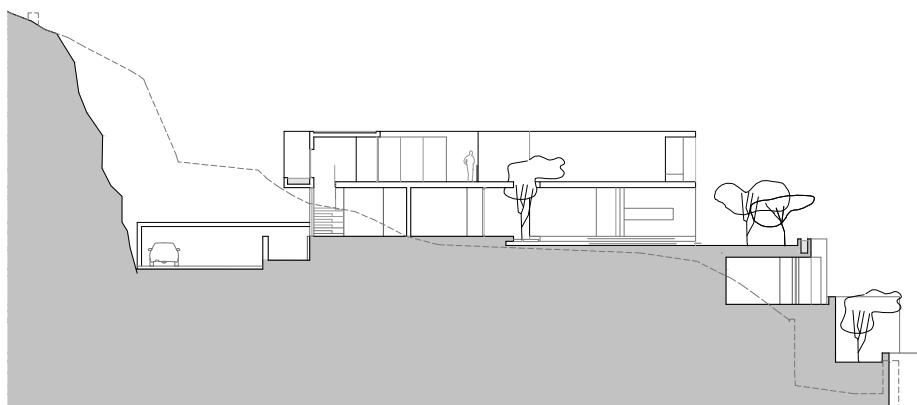
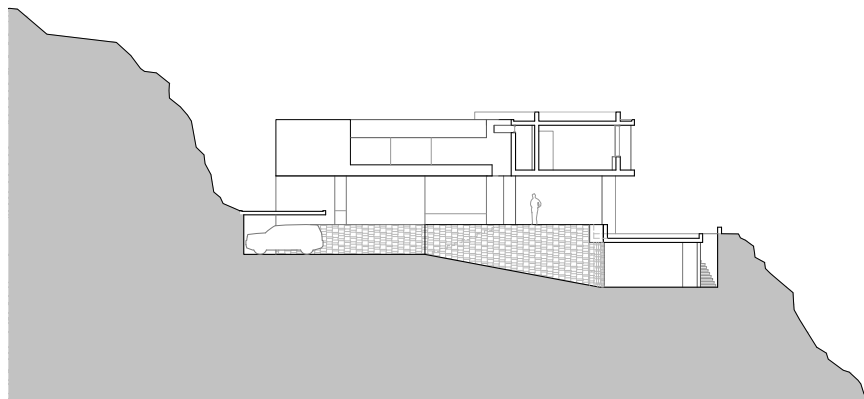
PRIVATE RESIDENCE

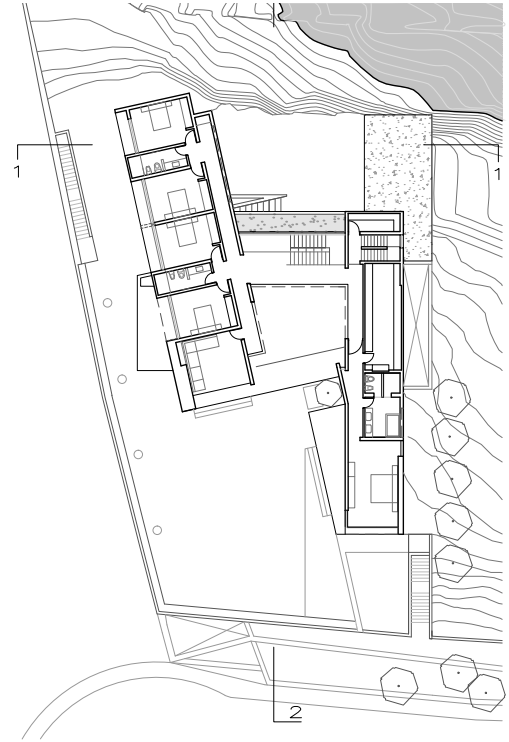
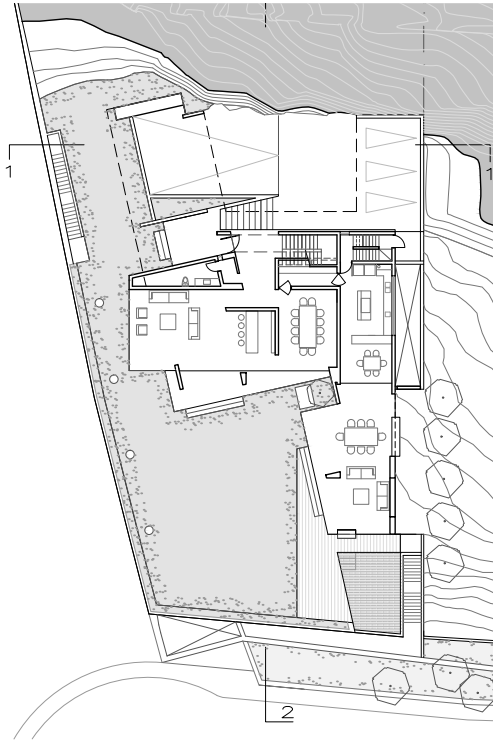
Role:	PROJECT ARCHITECT
Design by:	Benavides & Watmough
Typology:	Residential
Area:	700 sqm
Location:	Lima - Peru
Year:	2021
In charge of:	Architecture drawings, construction drawings, MEP coordination, on-site supervision.
Project Status:	Built

The plot assigned has a privileged panoramic view over Lima since it is located in one of the few hillsides of the city consisting mainly of steep slopes and rocky surfaces.

The objective was to face the house to this panoramic view but also relate it to the hill on the back facade. A large platform was created ten metres over the plot entrance level defining the highest point of the plot, holding the house and providing an unobstructed panoramic scene. This also enabled the creation of a large front garden, built on top of the car access ramp and establishing a horizontal line that frames the view of the city.

Both wings of the house are connected on the first floor through a transparent corridor that faces both the hill and the view and links to an exterior platform that the client uses as a star observatory. The uneven rocky surface of the hill becomes part of the interior, contrasting with the plain exposed concrete walls used internally and externally.







BELMOND RIO SAGRADO HOTEL
RENOVATION AND ENLARGEMENT PROJECT

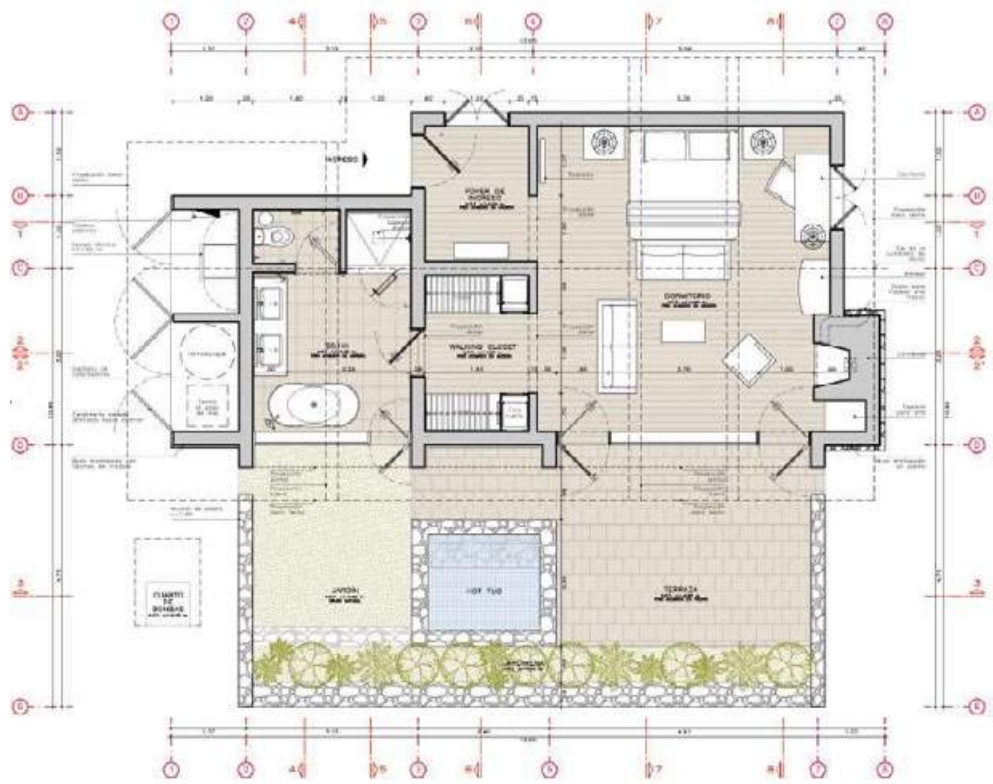
Role:	PROJECT ARCHITECT
Design by:	Palacio Architects
Typology:	Hotel, 30 new keys
Location:	Sacred Valley, Cusco, Peru
Year:	2016-17
In charge of:	Architectural Drawings, MEP file coordination, on-site su- pervision, authority building permits approval.
Project Status:	Building Permits Approved

BELMOND RIO SAGRADO HOTEL
RENOVATION AND ENLARGEMENT PROJECT



TOP: NEW ENLARGEMENT SUITES AND TERRACES

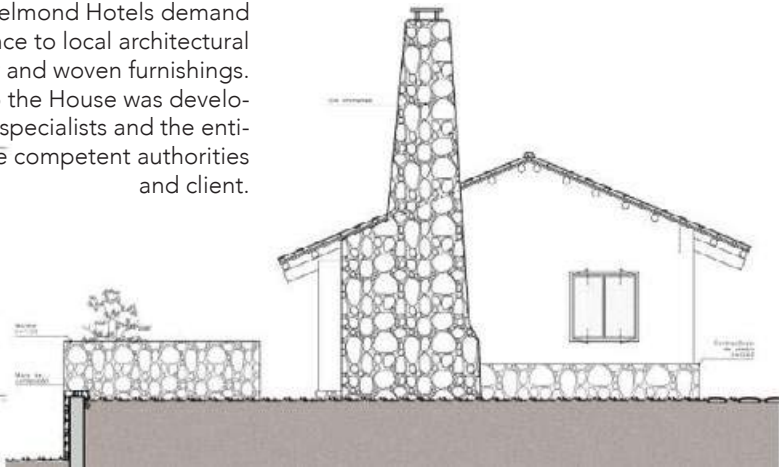
Role: PROJECT ARCHITECT
Design by: Palacio Architects
Typology: Hotel, 30 new keys
Location: Cusco - Peru
Year: 2016-17
In charge of: Architectural drawings, MEP file coordination, on-site supervision, authority building permits approval.
Project Status: Investment Project and Building Permits approved.

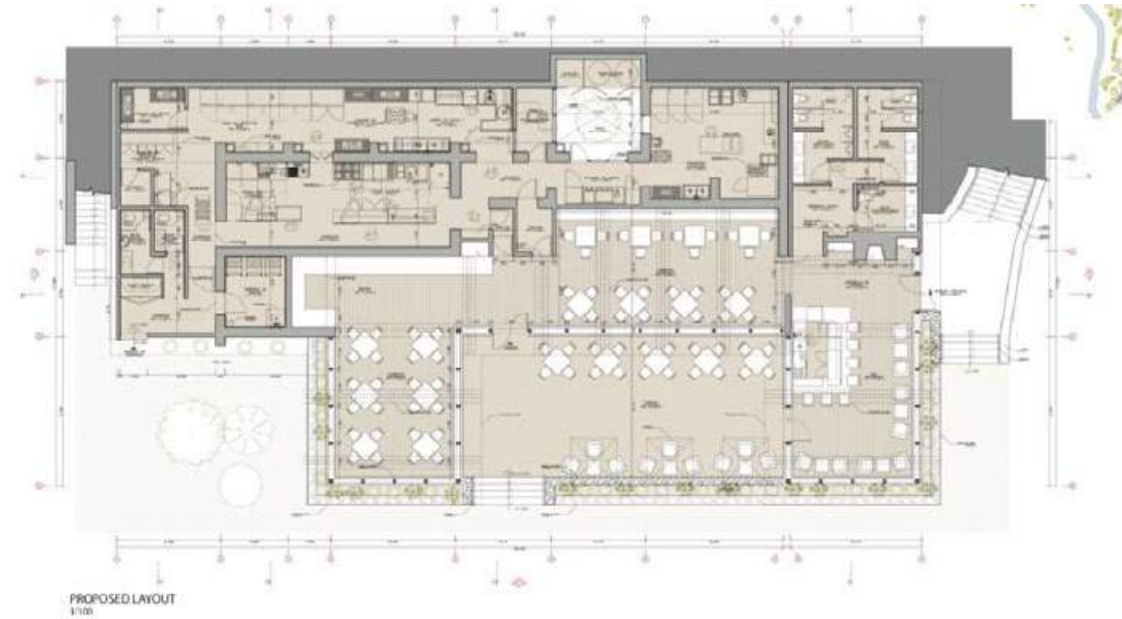


TOP: SUITE TYPE A - PLAN
BOTTOM: SUITE TYPE A - ELEVATION

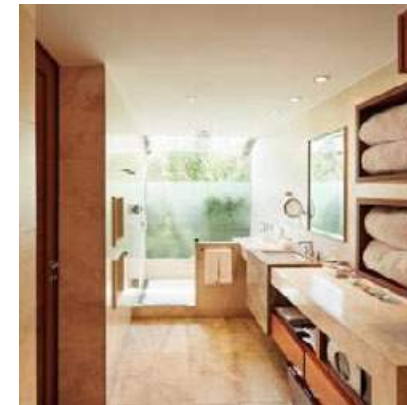
The Belmond Rio Sagrado Hotel has a privileged location in the heart of the Sacred Valley, near Machu Pichu, in Cusco-Peru. The architecture and masterplan of the hotel attempt to resemble a little Peruvian village, having the suites distributed in different small buildings and the hotel's entire circulation outdoors thanks to the privileged weather of the area. The Renovation and Enlargement project for Belmond Rio Sagrado Hotel included the construction of 30 new suites on the Hotel's new property, as well as the renovation of the existing Restaurant, Lobby and a new Back of the House building.

The enlargement of the property had as primary objective to maintain the existing configuration of the hotel and its gentle relationship with the landscape. The new suites are placed facing the river with exterior terraces and have all the appliances that the Belmond Hotels demand on its properties maintaining the resemblance to local architectural traditions, as well as the local wooden decor and woven furnishings. The complexity of installations of the Back to the House was developed and coordinated with kitchen and laundry specialists and the entire MEP file was submitted and approved by the competent authorities and client.





TOP: RESTAURANT ENLARGEMENT PLAN
RIGHT: SUITE TYPE B SECTIONS WITH
THE HIGHER FLOOR RETREATED INTO
TERRACES.



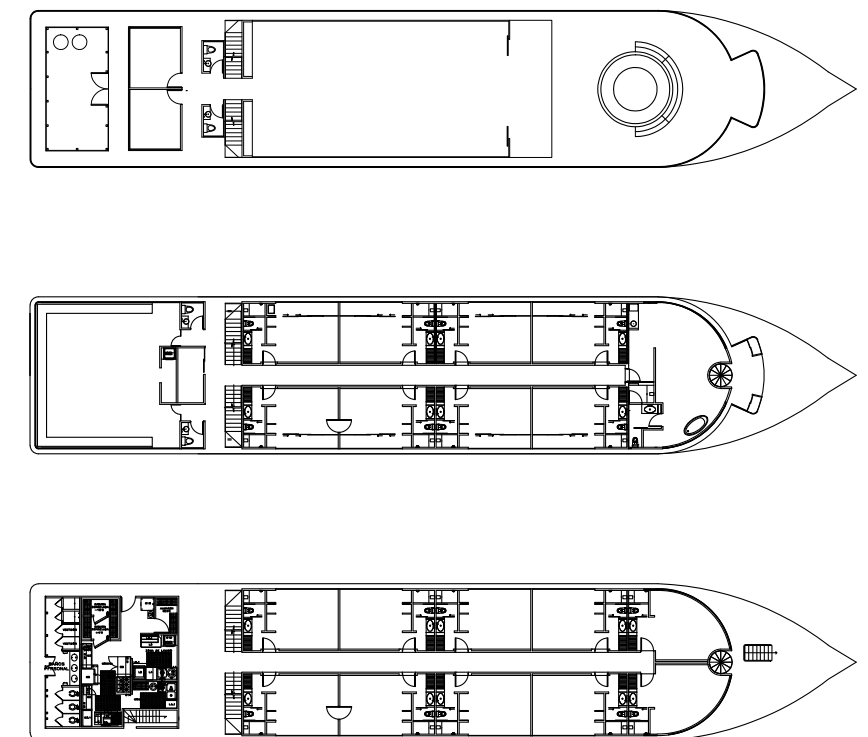
LEFT: ROOM INTERIOR AND BATHROOM PHOTOS
RIGHT: MASTERPLAN FOR ENLARGEMENT - RENDERING
BOTTOM: SUITES DISTRIBUTION ON LANDSCAPE





BELMOND ZAFIRO AMAZON CRUISE RENOVATION PROJECT

Role:	PROJECT ARCHITECT
Design by:	Palacio Architects + Janna Rapaport
Typology:	Residential + Hotel + Offices
Location:	Iquitos, Peru
Year:	2017
In charge of:	Architectural Drawings, MEP coordination, on-site super- vision
Project Status:	Investment Project Approved



Sailing aboard the Zafiro allows appreciating the immensity of the Peruvian Amazon from the intimacy and exclusive setting of a panoramic suite of a cruise. The Zafiro journey includes the navigation of the Amazon river as well as enjoy expeditions and visits to the local communities. This privileged experience made Belmond Hotels interested in the renewal and improvement of the ship according to its guest's accommodation standards.

The primary challenge of the project was to understand the necessary mechanical improvements of the boat. Numerous visits on site for recognition of the ship were made with navy experts to determine the technical and security improvements, as well as the selection of the port where the building works would be done. The whole boat structure was studied, as well as the electric, mechanical and plumbing installations for renewal.

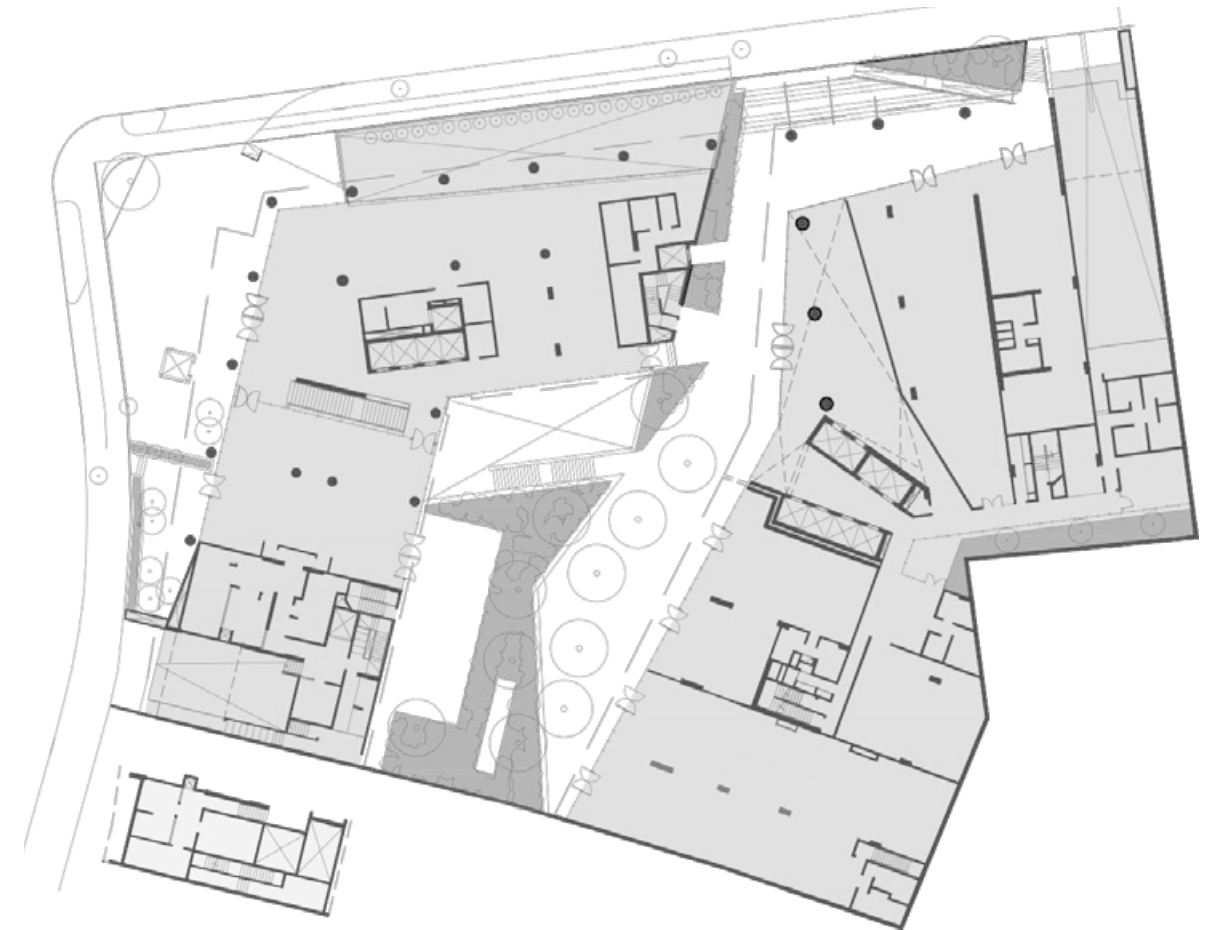
The Renovation included 19 suites, Restaurant, Lounge and Terrace, which interior and exterior spaces demanded materials and finishes accordingly to the functionality and weather conditions of the Amazon. The design was developed with interior designer Janna Rapaport, and seek to have the uniqueness of the Amazon scene as the protagonist, having plain and natural materials with a soft colour palette. Quotation of building works and FF&E improvements were developed for the final investment pack.





HYATT HOTEL AND OFFICE TOWER ARCHITECTURE

Role:	PROJECT ARCHITECT
Design by:	Benavides & Watmough
Typology:	Business hotel, 250 keys + Office Tower
Location:	Lima, Peru
Year:	2013-15
In charge of:	Architectural Drawings, MEP coordination, authority planning permit approval, on-site supervision
Project Status:	Built 2017-18



TOP: HOTEL AND OFFICE TOWER PLAN
BOTTOM: DETAIL ON CORNER - HOTEL

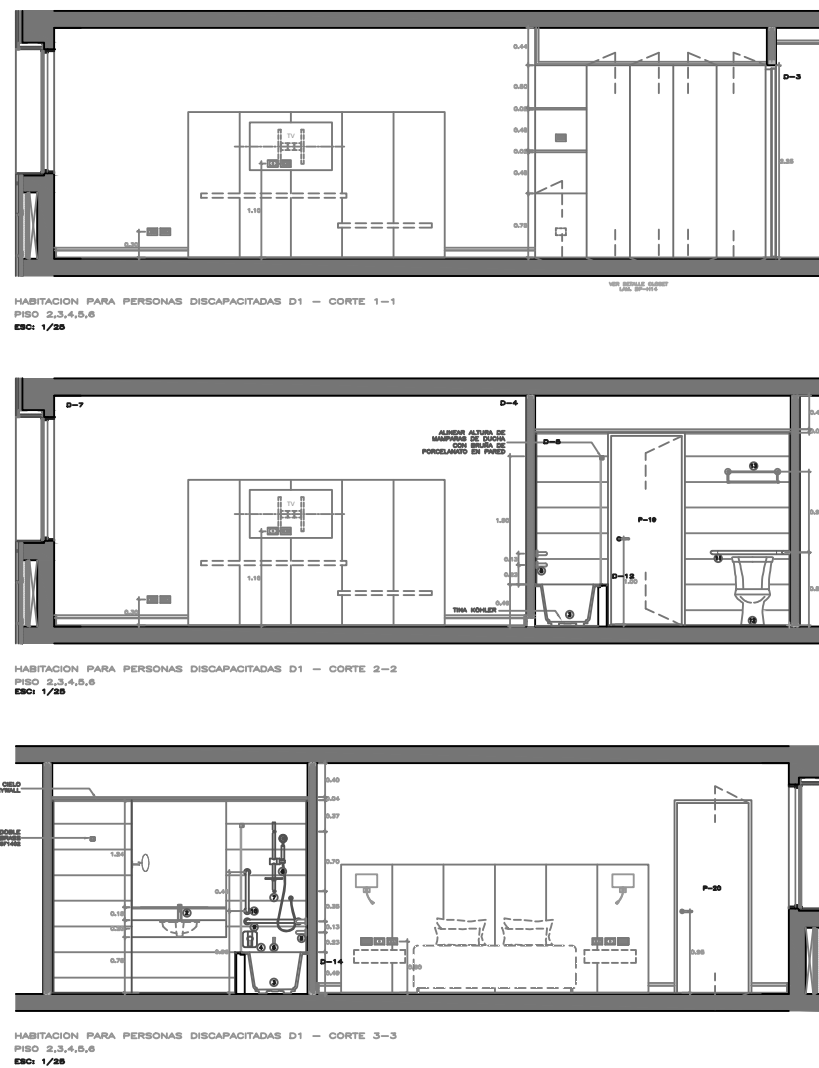
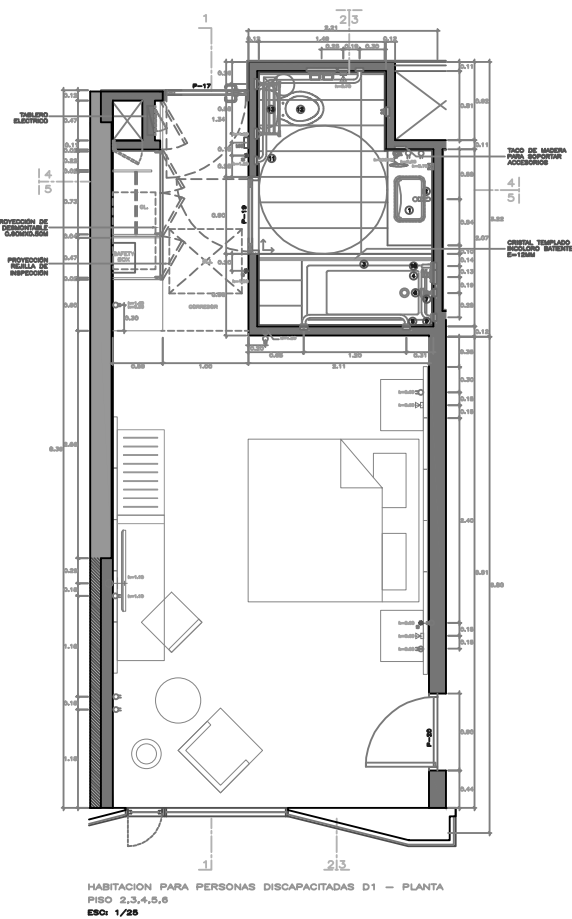
The project of Talbot Hotel and Tower offices was the result of a competition in which the studio was awarded the first prize. The primary strategy was to locate the hotel in the corner of the property as an L shape, facing an important avenue and opening up a free space towards the smaller street, generating the entrance with free circulation and drop off for guests, while producing a distance between the rooms and the existing houses.

The central void is the focal point of the project. The creation of an open space in the middle of the plot, between the hotel and office tower, allows the generation of a public space with restaurants and terraces with free access from the main avenue. This also establishes a distance between offices and rooms guaranteeing their privacy. Both buildings, work independently but are understood as a unit, thanks to the selection of materials and design of their facades.

The hotel includes 250 keys, Spa - Pool and Gym on the 10th floor and a convention centre on the basement. The office tower required LEED standards, which were developed among the whole design process.

The complete project was developed and coordinated with client hospitality experts, interior designer, kitchen and laundry specialists, and the entire MEP file was submitted and approved by the competent authorities and client. The project is currently built and operating.

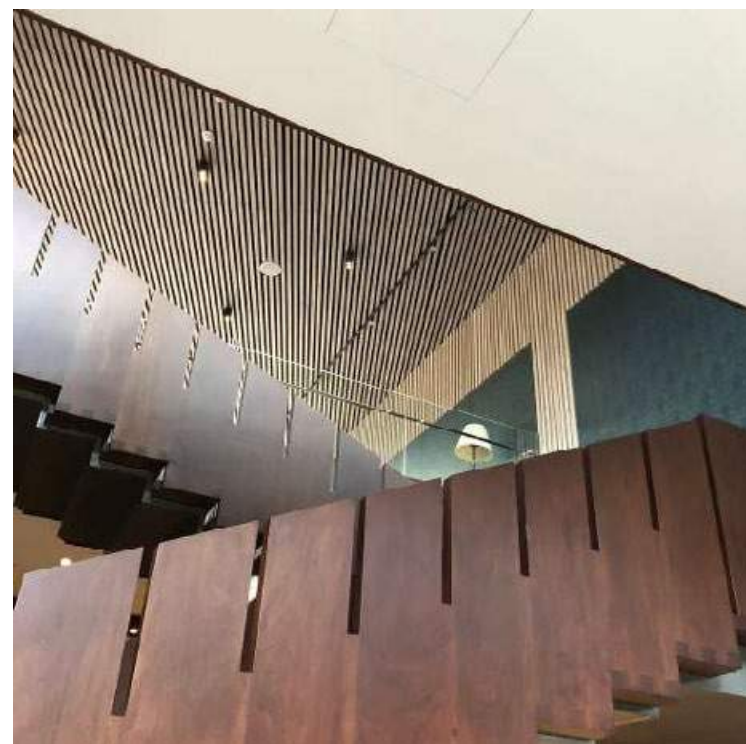
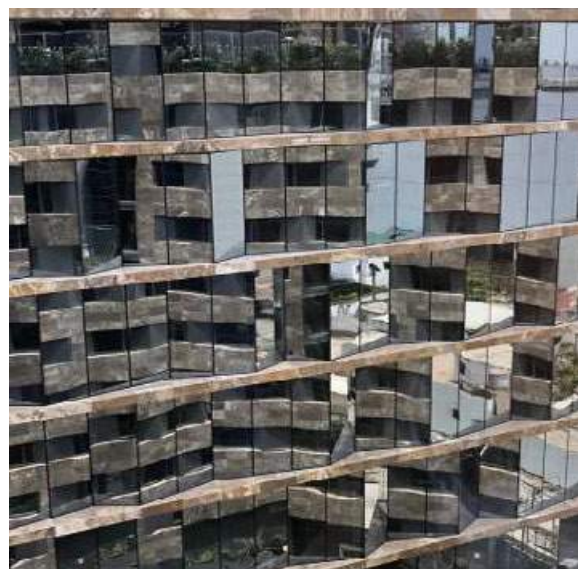




LEFT: ENTRANCE TO PLAZA FROM AVENUE BETWEEN
HOTEL AND OFFICES
RIGHT: VIEW FROM OFFICES TO THE MAIN PLAZA
BOTTOM: HOTEL FACADE



TOP: BEDROOM DETAIL PLAN
BOTTOM LEFT: DETAIL OF OFFICE TOWER FACADE
RIGHT: DETAIL OF STAIRS IN HOTEL LOBBY



TEACHER HOUSING PROTOTYPES FOR RURAL CONTEXTS
EDUCATION MINISTRY OF PERU



Role: PROJECT ARCHITECT
Design by: Stephanie Delgado-
Typology: Rural Housing
Location: Coast, Mountain and Amazon - Peru
Year: 2015
In charge of: Design, Architectural drawings and budget.

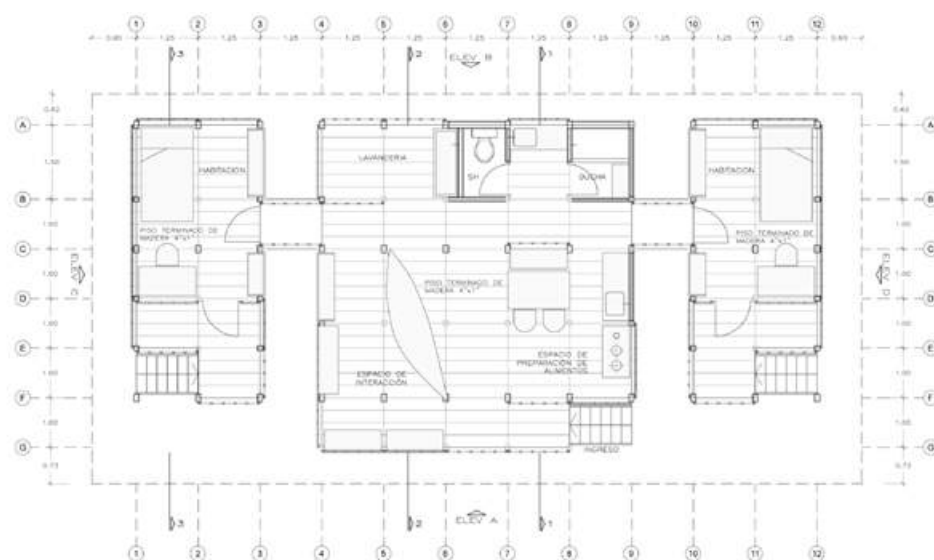
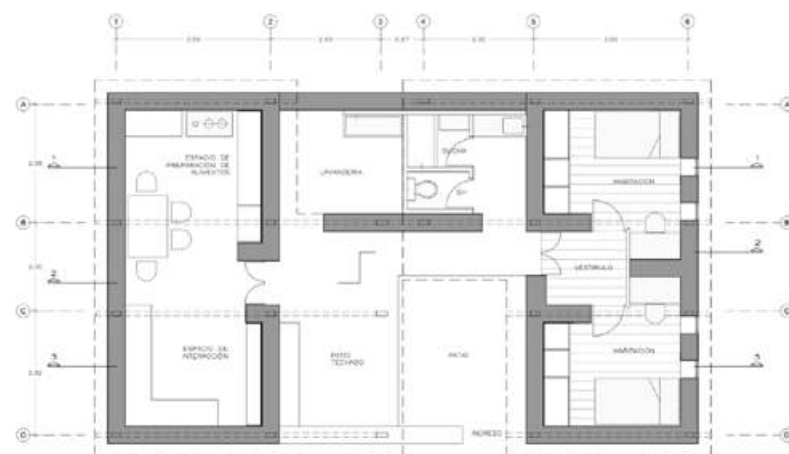
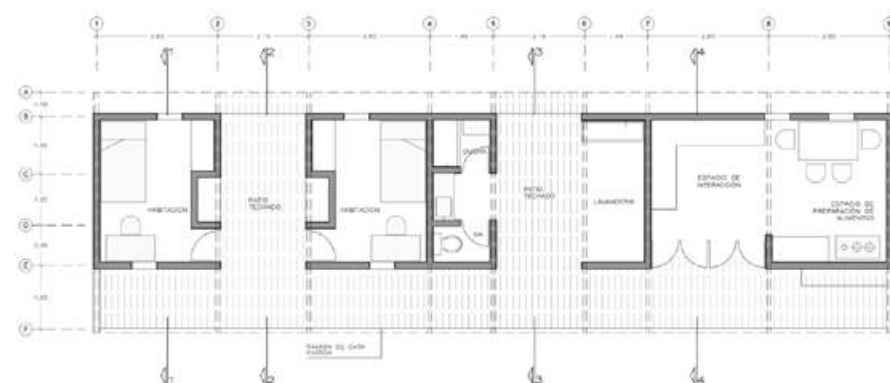


FROM TOP TO BOTTOM: PROTOTYPE SECTIONS
COAST PROPOSAL
MOUNTAIN PROPOSAL
AMAZON PROPOSAL

The Teacher Housing Project in Rural Contexts of Peru demanded three preliminary proposals for housing units as part of a document with architectural guidelines for future projects including an idea of the investments costs.

The three extreme rural areas in the coast, mountain and Amazon of Peru, defined different configurations and criteria for what constitutes the small programme of a house. Materiality, construction processes, weather, culture and proximity to the community and the school, were factors that affected the design for each of the proposals.

Although the design demanded the minimum use of resources and basic conditions, it was essential to have the architectural guidelines and image of the configuration of the house, considering that the document is not addressed to architects.

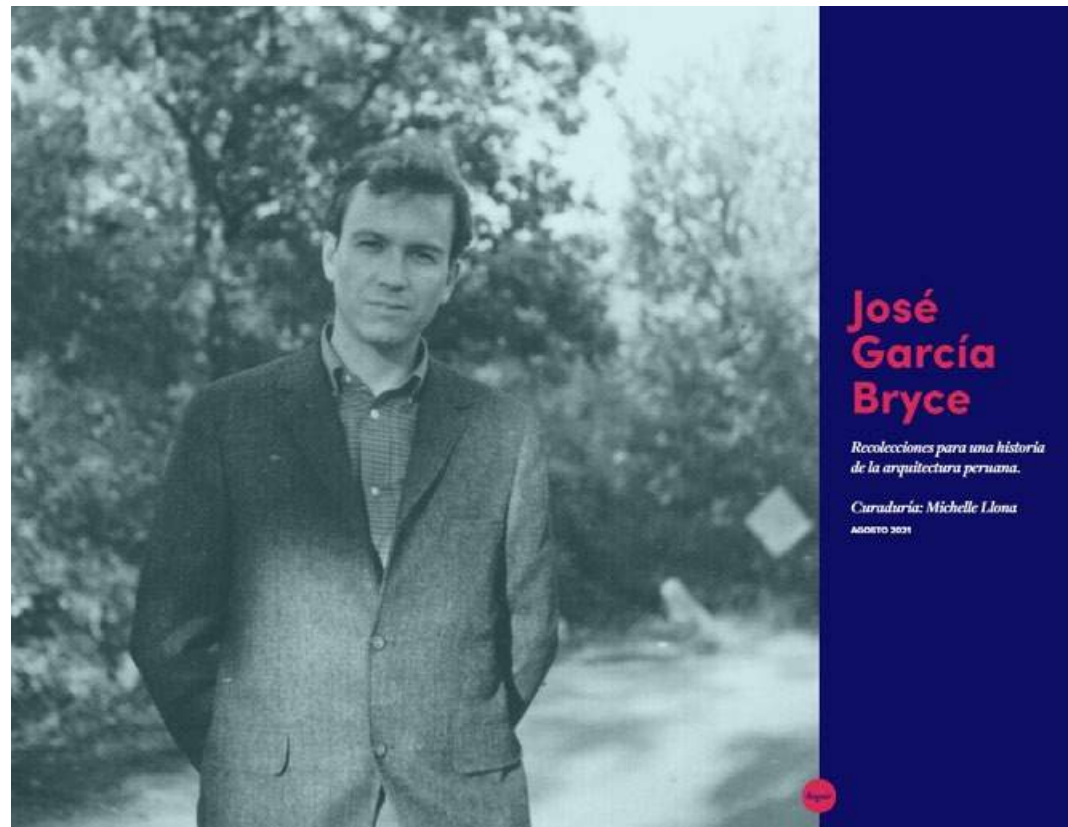


FROM TOP TO BOTTOM:
 PROTOTYPE PLANS
 COAST PROPOSAL
 MOUNTAIN PROPOSAL
 AMAZON PROPOSAL

NEXT PAGE:
 PROJECT RENDERINGS



C



José
García
Bryce



La Arquitectura en el Perú desde 1839

Proyecto que es relato

"The history of buildings is the history of meaning in architecture"
Robert Stern 1977

La dedicación y lealtad de José García Bryce hacia la arquitectura —como disciplina, pensamiento y práctica— es algo difícil de encontrar en el ámbito arquitectónico contemporáneo, en el que más bien los arquitectos tratamos de alejarnos de lo que él mismo denomina el **dominio de formas clásicas y las reglas que deben regir en la práctica**, para, por el contrario, expandir y diversificar el alcance de la profesión. Podríamos atribuirle un aire nostálgico a la manera en la que se refiere al oficio; sin embargo, García Bryce ha sido tanto histórico como moderno, riguroso como sensible, y reflexivo como también pragmático.

En esta serie de contrapuntos se encuentra el texto sobre historia de la arquitectura peruana, publicado en 1989, siete mil palabras que resumen ciento cincuenta años de arquitectura en nuestro país. Casi como la laboriosa tarea de conformar un archivo, García Bryce asume la labor de encontrar, catalogar, distribuir y analizar una historia que bien pudo haberse quedado perdida u oculta detrás del deterioro de los edificios existentes —o ya inexistentes— que tan cuidadosamente selecciona para elaborar su relato. En su intento de construir un movimiento peruano o una Historia de la Arquitectura Peruana, García Bryce reflexiona e interpreta su propia contemporaneidad con orden, rigurosidad, síntesis y memoria impecables, de la misma manera en la que se ven reflejados los trazos de sus elaborados dibujos. Su relato se convierte en comunicación a partir de la lectura y el análisis de aquel registro inicial.

García Bryce habla de arquitectura recurriendo a edificios emblemáticos y tangibles. La experiencia del pasado se da a través de los monumentos del contexto, y el edificio se vuelve evidencia al estar condicionado por la ciudad, pero al mismo tiempo por condicionaria. Sabemos que estos edificios están siempre ahí, palpables, como parte de una realidad física, pero la disciplina, las palabras y la reflexión sobre los mismos se convierten en ese sentido de la arquitectura que es más pensamiento sobre el edificio que construcción misma. En este aspecto, García Bryce recopila y mapea de manera mnemónica



DO-GOOD ARCHITECTURE
EVOLUTION OF HUMANITARIAN DESIGN DISCOURSES

The contemporary positioning of design as the very best problem solver based on a philanthropic approach to the world seems to be full of contradictions. Architects have been developing a socially concerned agenda aiming to fight a wide range of battles involving today's inequality, poverty, environmental crisis, education and health, housing and displacement.

Do-good Architecture aims to unveil this discourse mainly from the words and statements written in a series of publications, but also from the universal language that appears on renderings and photos, locations, scale and materials selected for this new type of architecture. It is no longer the white wall of the modernist reformist movement; today it is the brick, the mud, the wood and the bamboo who claim to solve the new design challenges.

The principal image of the Reporting from the Front Biennale shows German archaeologist Maria Reiche studying the Nazca lines in Peru solely with the use of a modest ladder. This image became a symbol, as the curator explains, of inventiveness and pertinence.

Do-Good Architecture has as cover image the same lady on the ladder, but this time above John Turner's book Housing by People of 1976, which shows the housing crisis of the epoch and its unprecedented extension of slums in a dramatic aerial photograph. In this contraposition, the lady on the ladder becomes the alternative stereotype of the architect's figure, in which from a higher, privileged and alien position, comes to the rescue of those in need.

We attempt to understand how the ethics of care have evolved, since going back in time demonstrates a shift between the handling of practical problems and the contemporary premise in which everyone deserves good design. Tracing the genealogy of the ideology built around the self-called Humanitarian Design allows a critical reading to the means of Doing-good today within the design and architectural practices.

BOTTOM: COVER IMAGE OF DO-GOOD ARCHITECTURE

NEXT PAGE: PICTURES OF FINAL DOCUMENT IN NEWSPAPER FORMAT

Role: RESEARCHER
Design by: Stephanie Delgado
Location: London, UK.
Year: 2018
In charge of: Complete document.



NEW PERUVIAN ARCHITECTURE ARCHIVE
PONTIFICAL CATHOLIC UNIVERSITY OF PERU

One way to start the long path in search of Architecture relevance in Peruvian society is the necessary recognition of its history and evolution as a component of its culture. For this, it is indispensable to reconstruct and preserve the legacy of individual contributions to the discipline, from which Peruvian architecture owes part of its current condition.

The architects that made such contributions made use of a series of documentary material such as plans, drawings, sketches, photos, writings, essays and books, among others, to materialise their ideas. This material becomes key to the awareness of most of the contemporary architectural approaches origins.

For this, the Architecture School of the Pontifical Catholic University of Peru (PUCP) and its system of libraries, is investing and creating the Architecture Archive PUCP, which is a long-term project that seeks the conservation and value of the material and immaterial heritage of Peruvian architecture.

Nowadays, the Archive holds the contribution of architects Paul Linder (1897-1968) and José García Bryce (1928-), material that still need to be curated and organised. Further on the Archive will receive other important Peruvian architects works such as Hector Velarde (1898-1989), Miguel Lloná (1929-2014), Antonio Graña (1940-), Frederick Cooper (1940-) and Eugenio Nicolini (1939-1995).

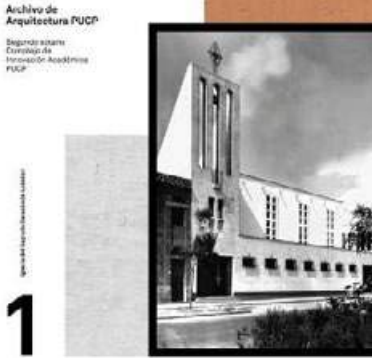
BOTTOM: STUDIO OF JOSE GARCIA BRYCE
WITH PLANS READY FOR STORAGE.

NEXT PAGE: POSTERS FOR EXHIBITION,
EXHIBITION OF DRAWINGS AND PHOTOS OF
ORIGINAL DRAWINGS BY JGB.

Role: RESEARCHER
Design by: Jose Garcia Bryce
Location: Lima, Peru
Year: 2016-17
In charge of: Compilation of material.
Inventory.
Clasification.
Curatorial project.
Exhibition.



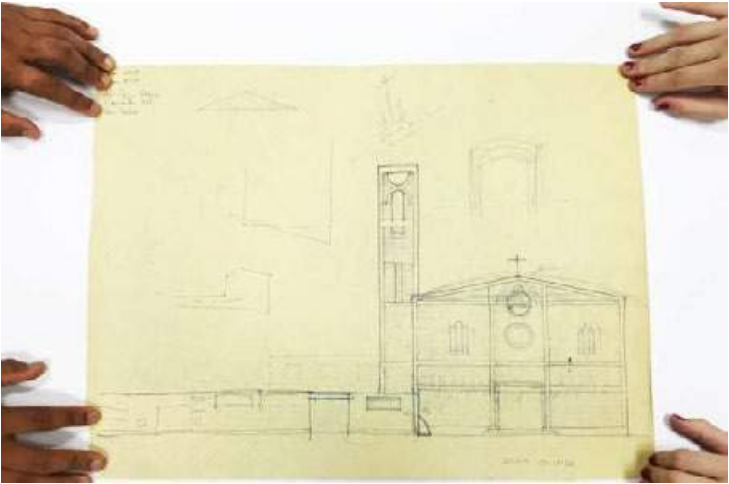
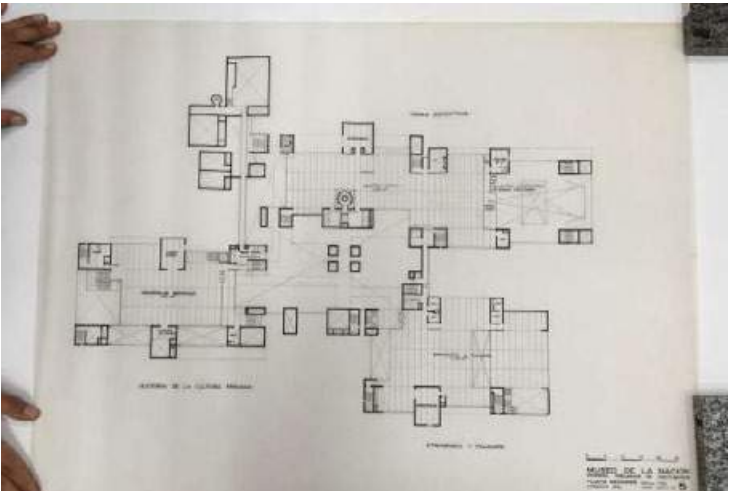
Paul Linder — 24 ago — 28 oct



José García Bryce — 24 ago — 28 oct



Cooper Graña Nicolini — 24 ago — 28 oct



TEACHER HOUSING GUIDELINES FOR EXTREME RURAL CONTEXTS IN PERU

Dwelling, that is to inhabit space, is considered as a primary human right. This statement not only implies having a shelter to be safe from outdoor conditions but to live in a comfortable space that ensures security and dignity, with proper lighting, ventilation and the essential services to dwell.

The results on analysing some of the Ministry of Education data, reveals that a large number of schools in Peru are located in extremely remote areas, considering communities with less than 400 inhabitants and a range of six to fifteen hours of transportation to the closest major settlement. With only two teachers for each school on average, the conditions of isolation results not only in the risk the teacher confronts on accessing these territories but also in the very limited options for housing. 17% of the teachers live in the school's rooms. This precarious conditions result in isolation, depression and absence of the teacher during the academic year.

The teacher housing project arises as a response to the current reality. The preliminary guidelines developed in this document works as a start point and come up as conclusions to the field study made within three representative zones in the Peruvian territory which had remarkably different conditions regarding culture, geography, climate and access. These parameters work as a guide for the future implementation of teacher housing projects, and also helps to have a grounded idea of costs, implementation and management of the required infrastructure. The objective is to contribute to the development of the educational sector in rural areas, through the implementation of housing for its teachers, assuring the architectural quality of each project and pertinence in the field of intervention.

The document includes four main indicators. The first one relates to the location, that is the relationship between the house and the school, as well as the house and the community. Then, the programme, which describes and differentiates the private spaces, spaces in between and the common or shared areas. Their dimension and grouping were also proposed. The third, the design criteria, develops each of the spaces that constitute the house with graphic examples, distribution and access. Lastly, bioclimatic parameters are considered essential among the nine ecological zones that Peru has, affecting the configuration of the house, construction materials and technology, as well as alternative plumbing and sewage systems.



Role: RESEARCHER
Design by: Stephanie Delgado
Location: Peru
Year: 2015
In charge of: Complete document.
Field trips.
Architectural proposal.
Budget.

BOTTOM: FRONT OF A TEACHER HOUSE IN
THE COAST OF PERU.

NEXT PAGE: FINAL DOCUMENT IMAGES.

