

UNDERGRADUATE PORTFOLIO

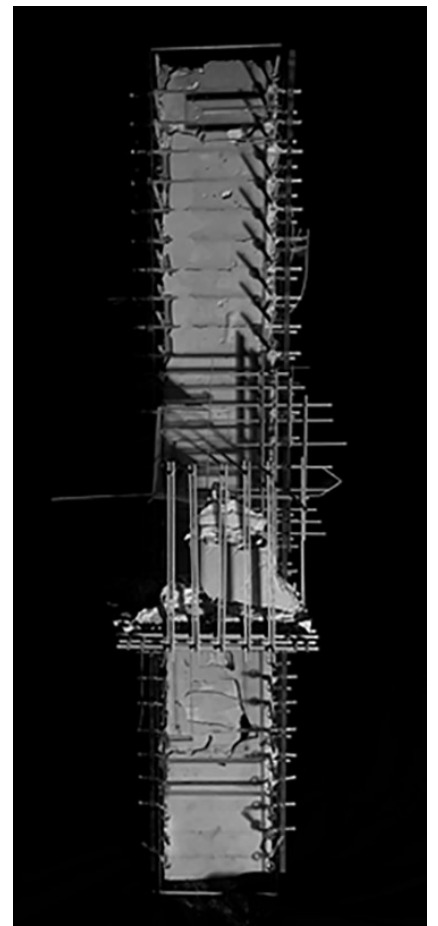
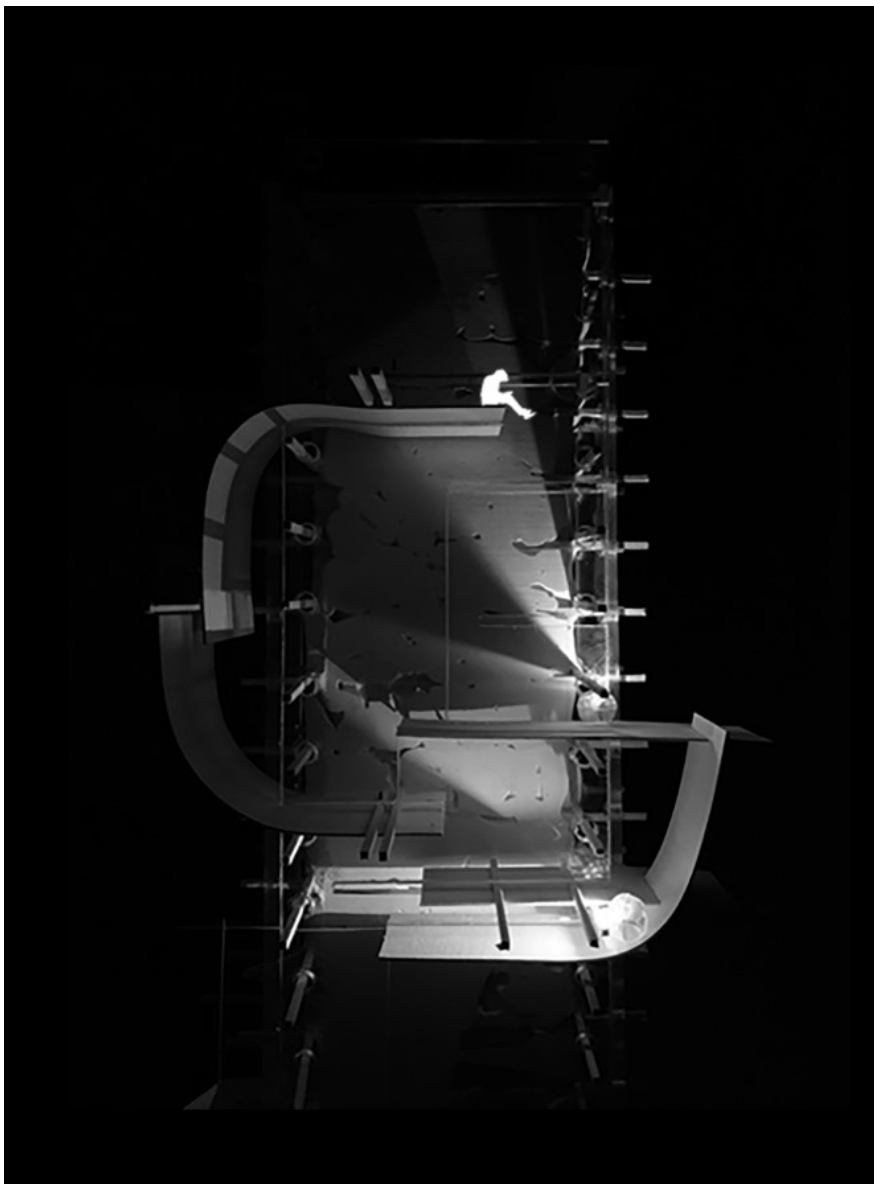
**Alexis Greiner
University of Florida
2022**

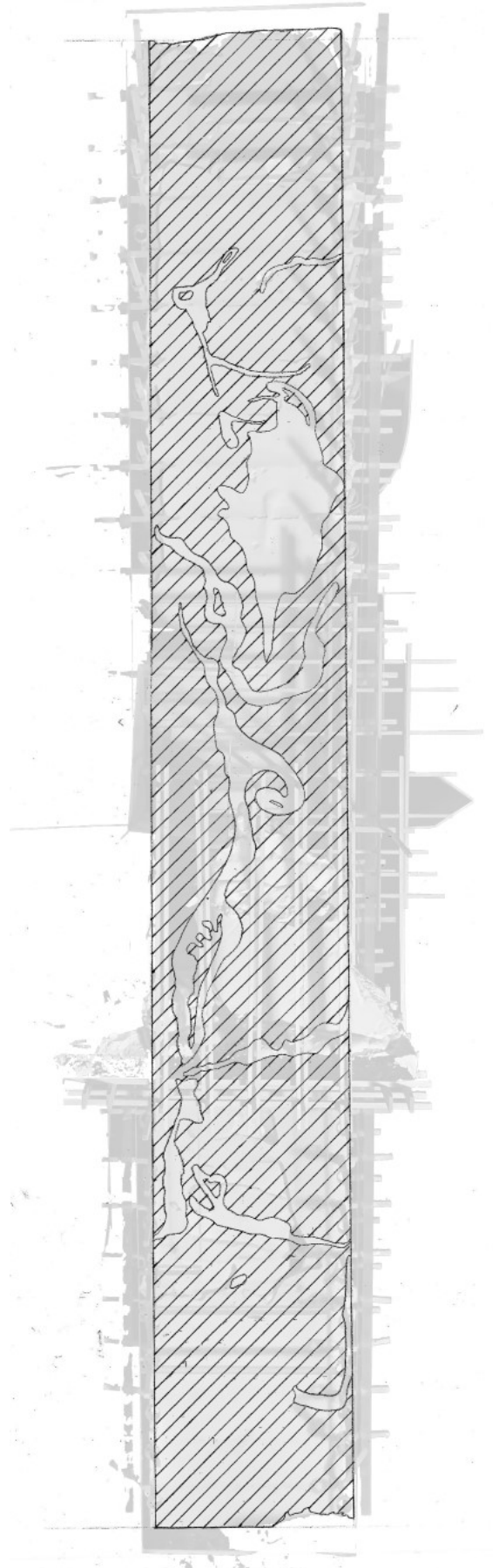
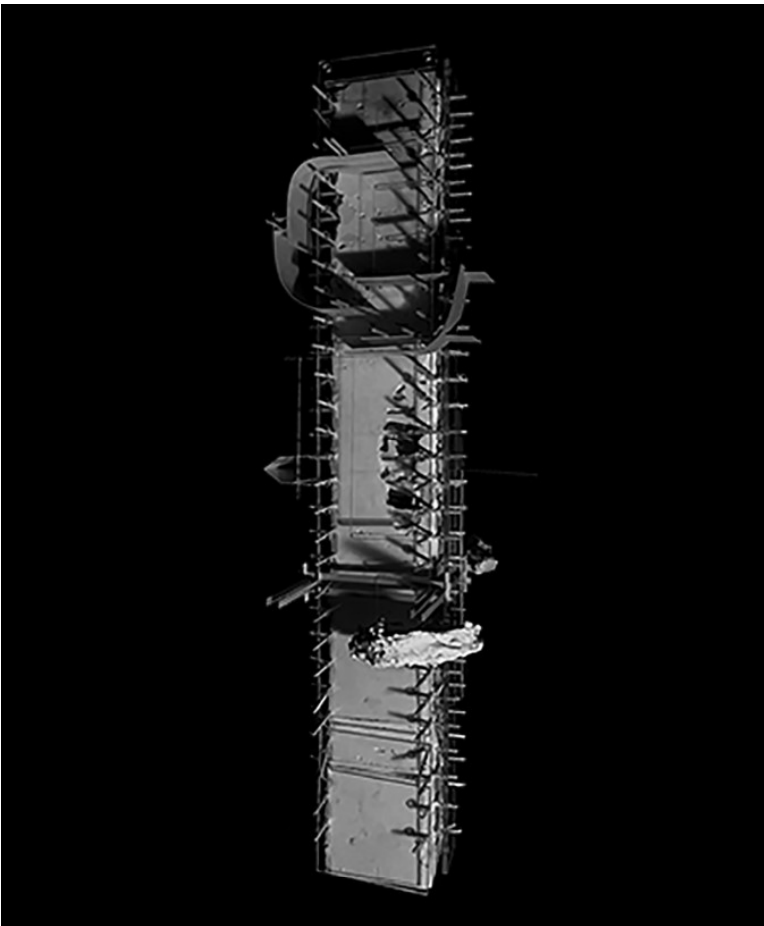
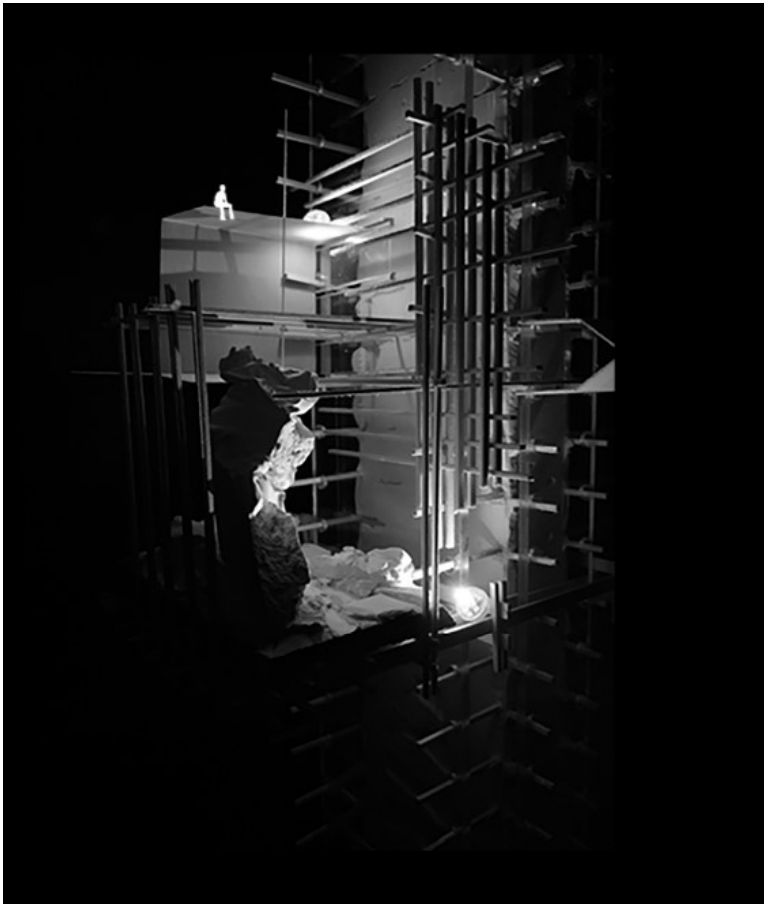
TABLE OF CONTENTS

CDC LABORATORY	5
FLORIDA LANDSCAPE	7
AVONDALE GROCER + FOOD HALL	9
SOUTHBANK MIXED-USE PROPOSAL	13
SONG	14
DOOR, WINDOW, STAIR	15
RUINS	17
MOZAMBIQUE PRESCHOOL	19
GENTRIFICATION + THE CITY	20
FABRIC STUDIES	21
MALIN RESDIENCE	23
SPECIAL INTERESTS: PHOTOGRAPHY	25

CDC LABORATORY

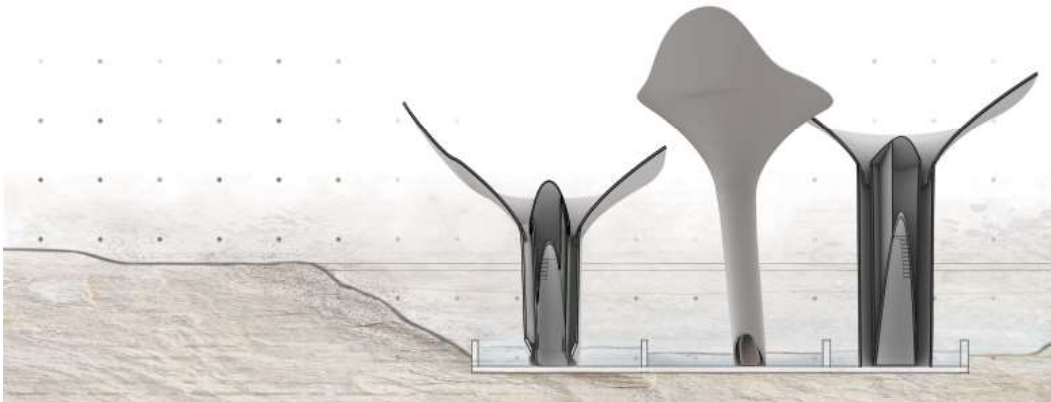
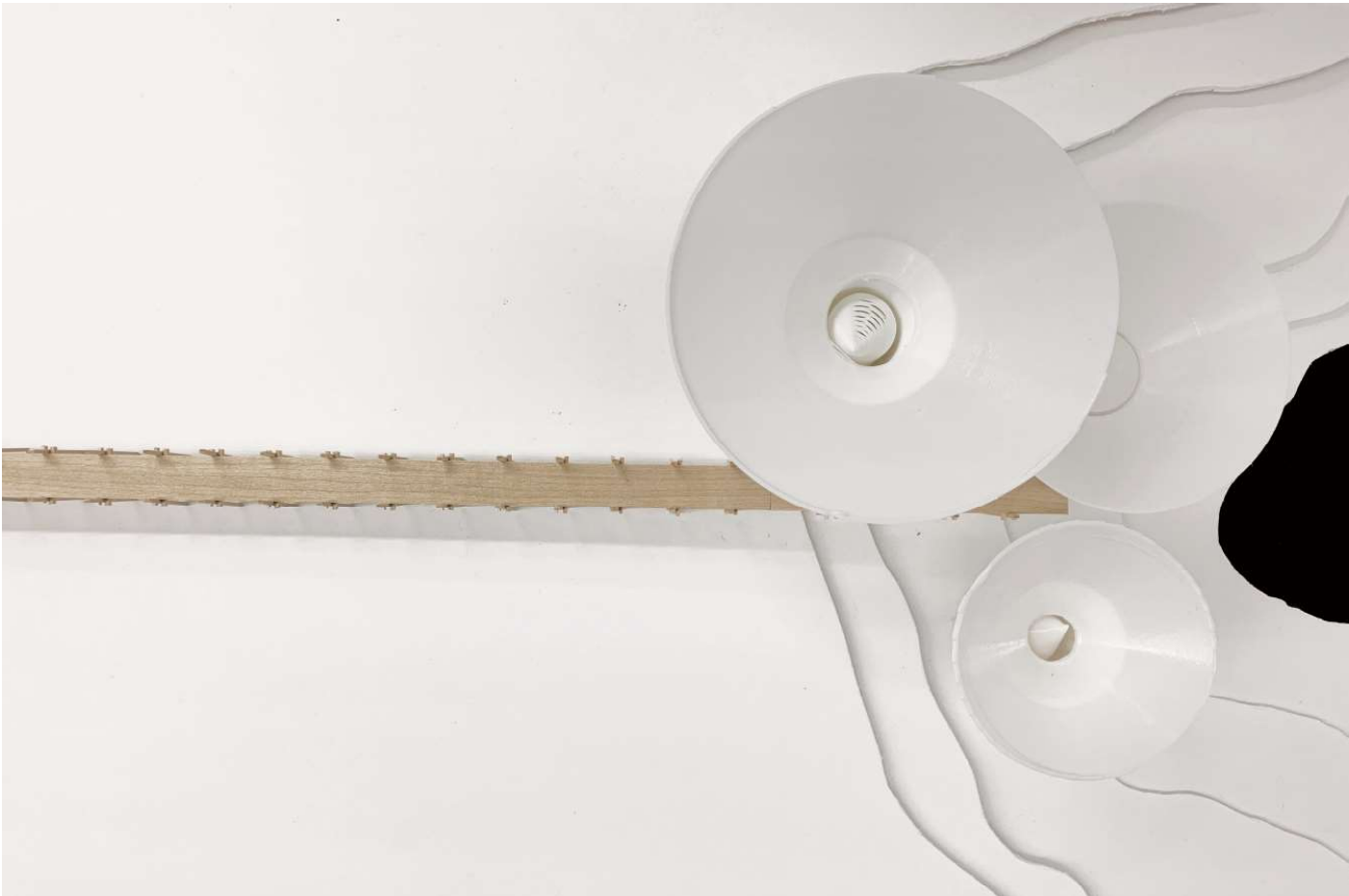
The primary project for the course, "Tower" is lower division architecture students' first opportunity to build a strong vertical datum. The idea arose from experiments with plaster with the goal of creating decay from within. The 2 1/2 foot model was constructed using a wooden linear skeleton enclosed with blue foam. Plaster was then poured around various natural materials which were either physically removed or melted away after casting. Four 1/4" thick plexiglass pieces were then inserted to separate the "disease" being studied from the researchers.

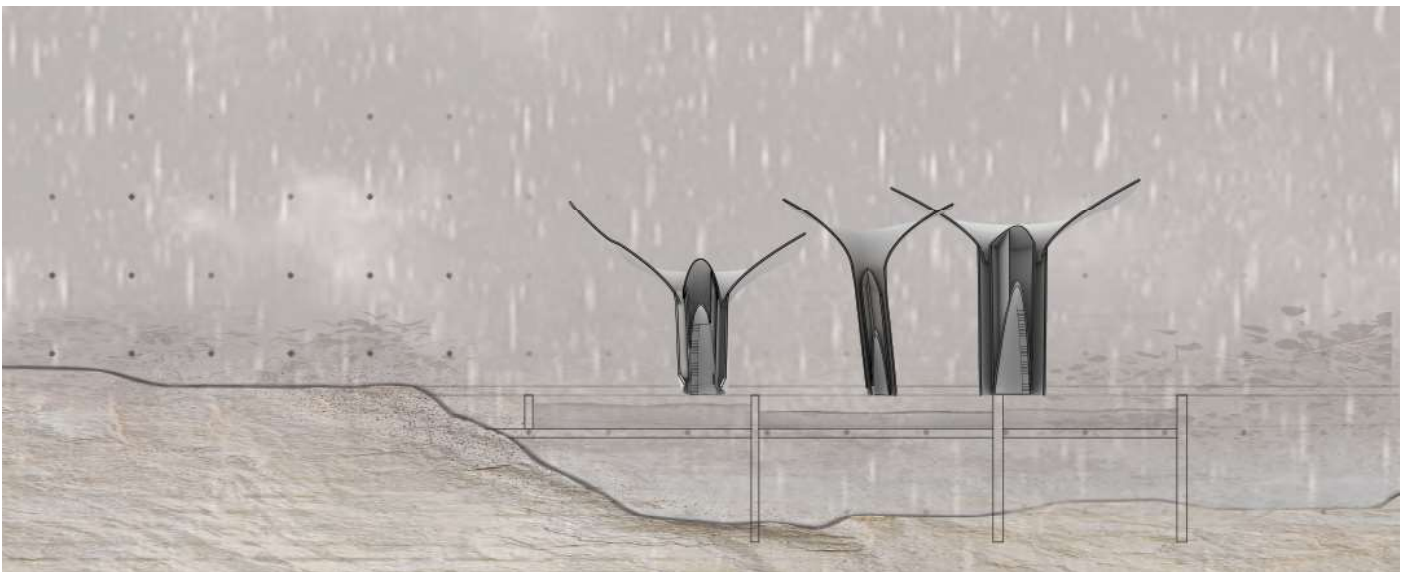
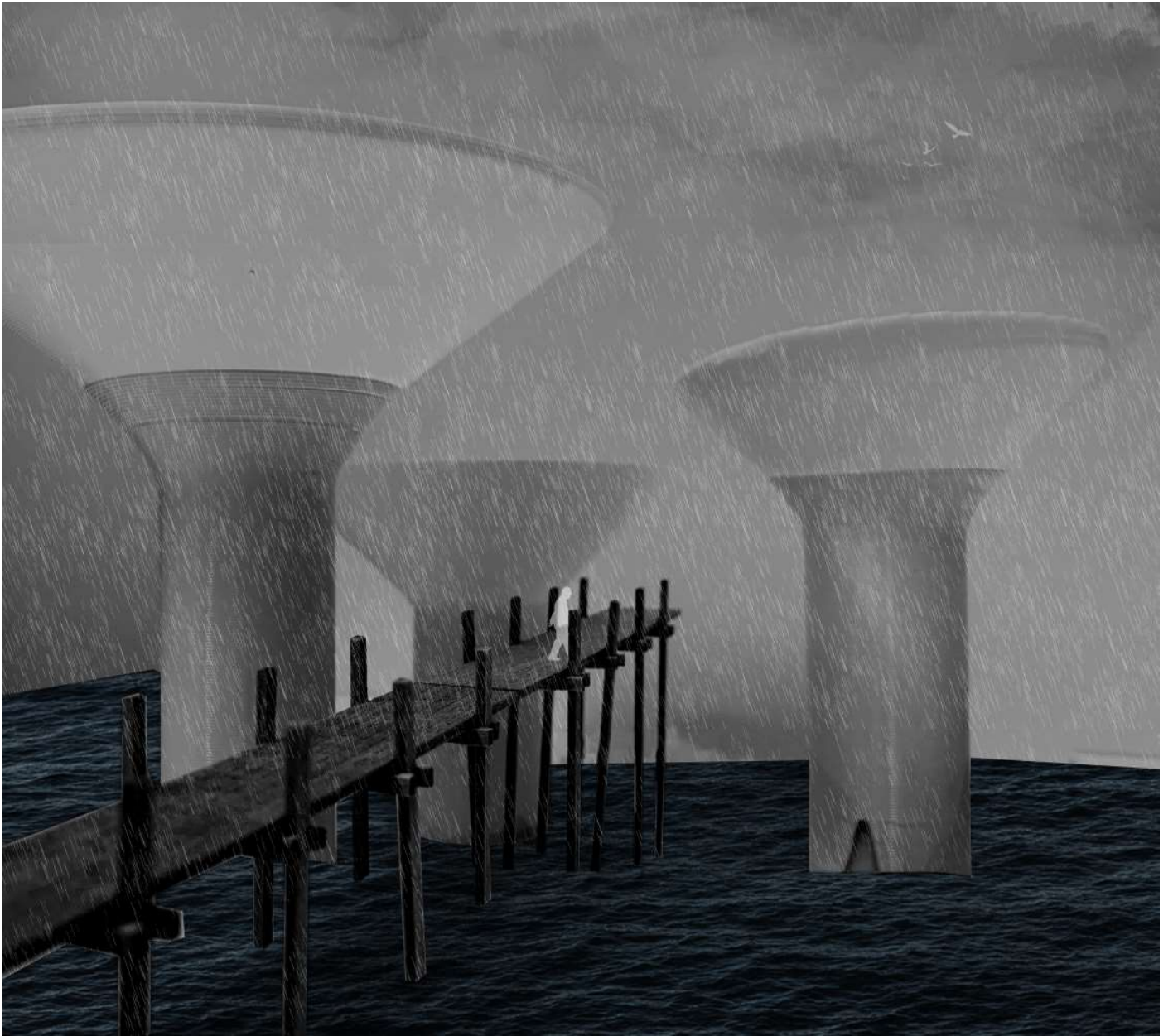




FLORIDA LANDSCAPE

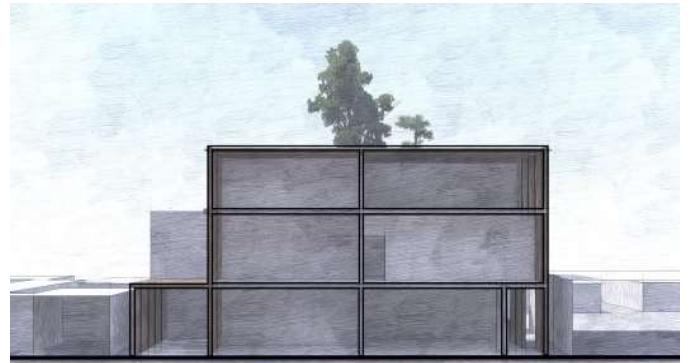
This project is in direct response to the draining of Florida's aquifers. Many people are unaware of arguably Florida's most valuable resources that is the main source of ground water supply. The project aims to create an accessible and visible representation composed of 3D printed rainwater collection and filtration 'cones'.

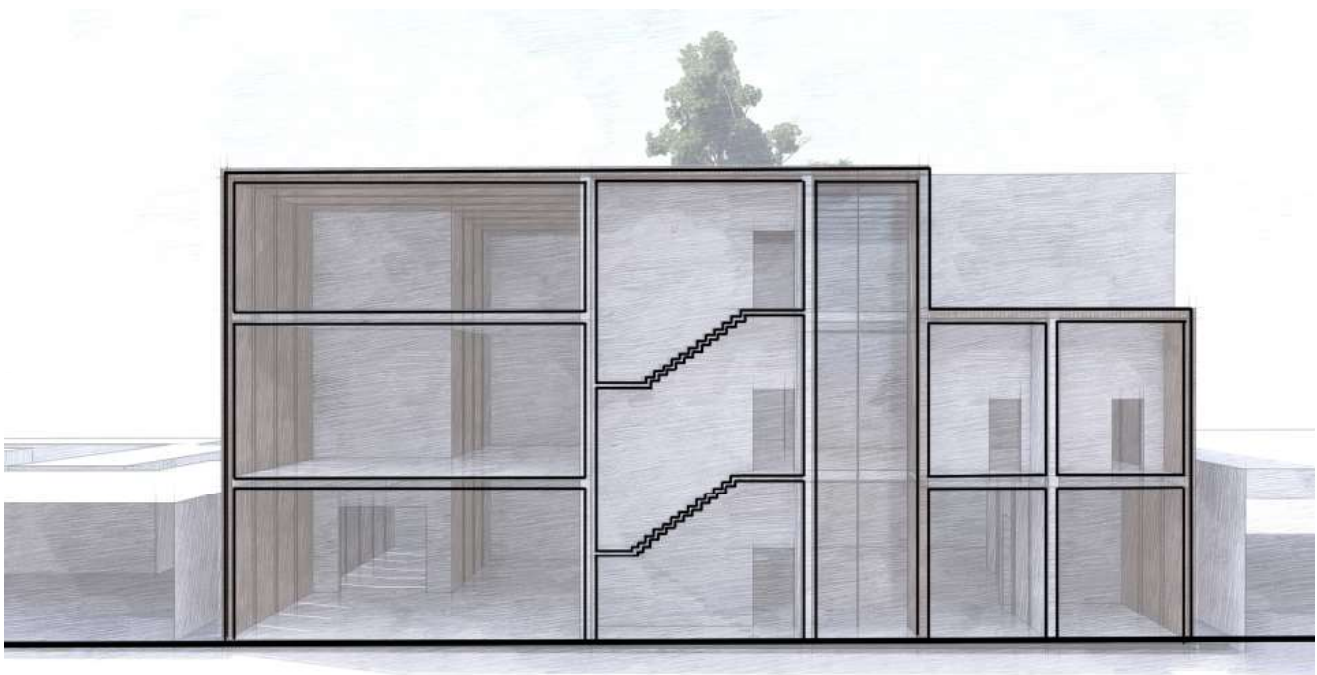
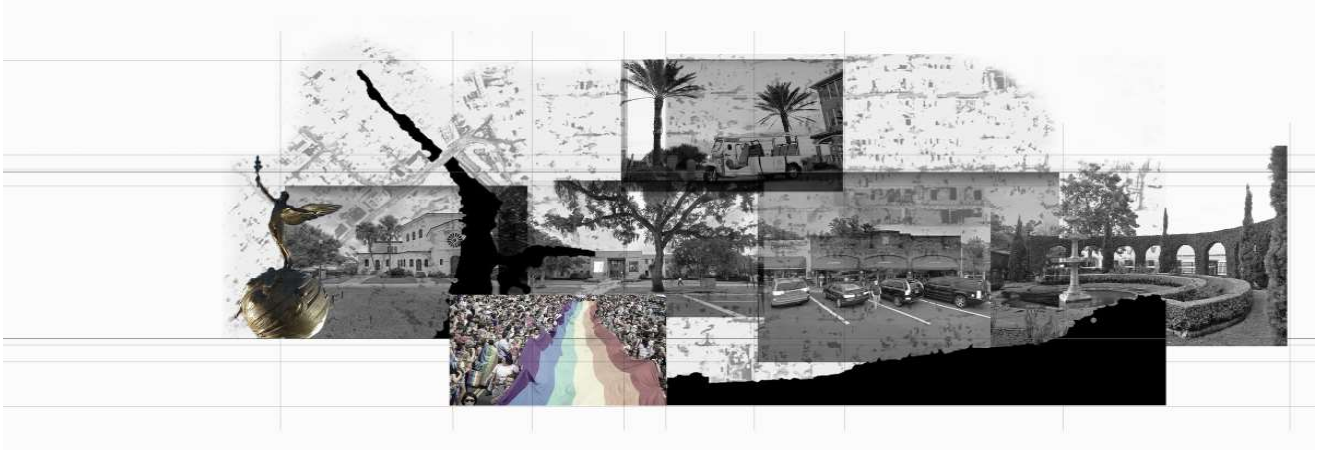




AVONDALE GROCER + FOOD HALL

The Avondale Grocer and Food Hall is a direct response to the many areas of Jacksonville that lack access to groceries and produce. The proposed solution is placed on a commercial street surrounded by suburbs and is composed of a ground floor food hall, second floor culinary education center, and third floor grocery store. The wood panels are broken up to provide daylight to key spaces with minimal heat.



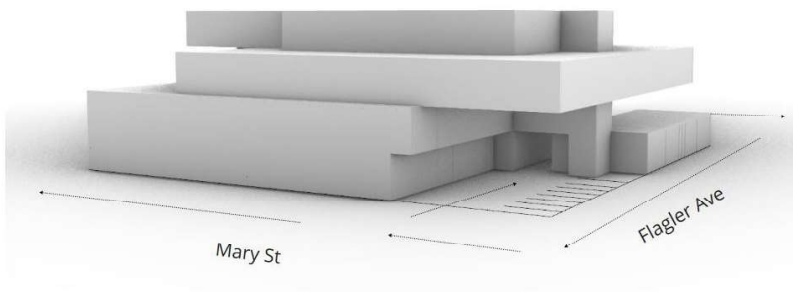
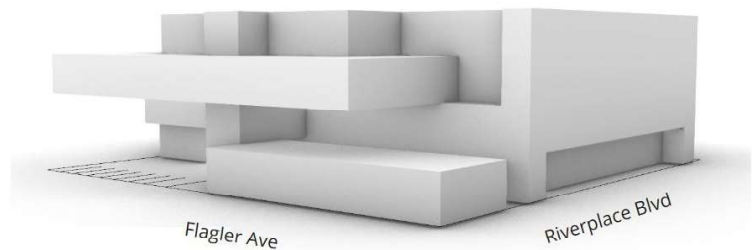
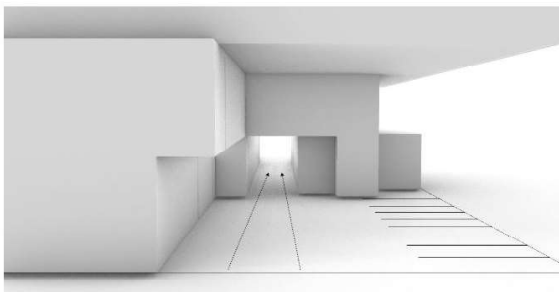
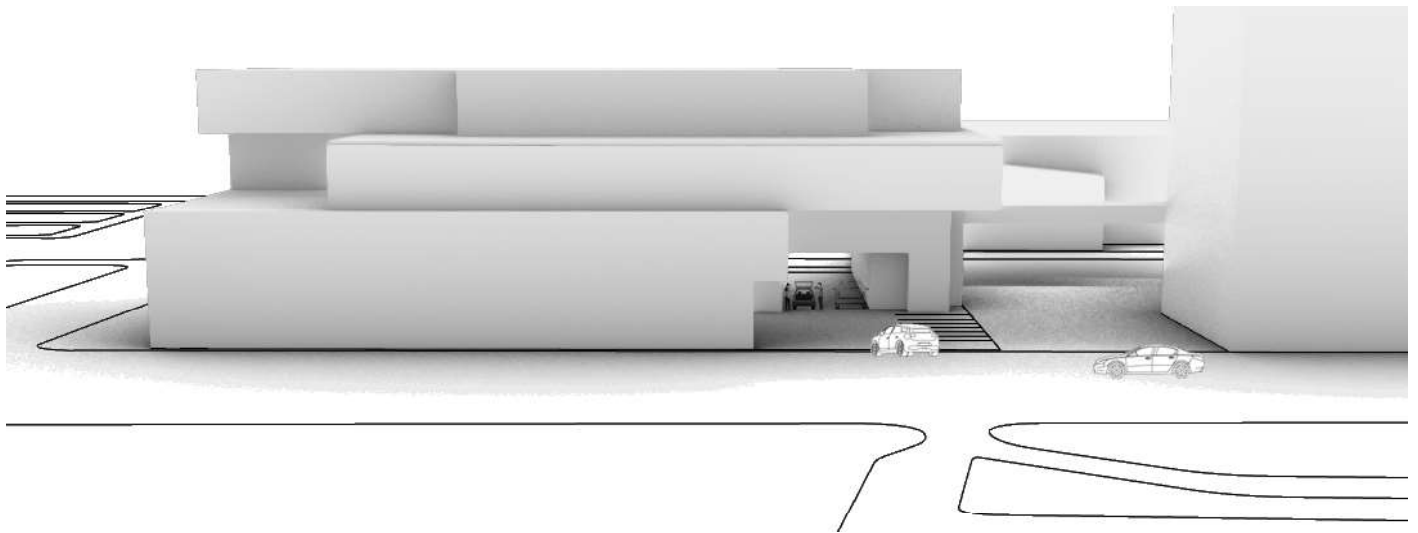
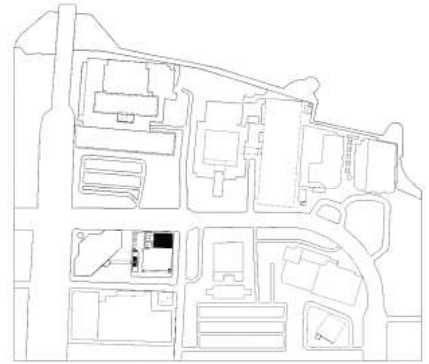


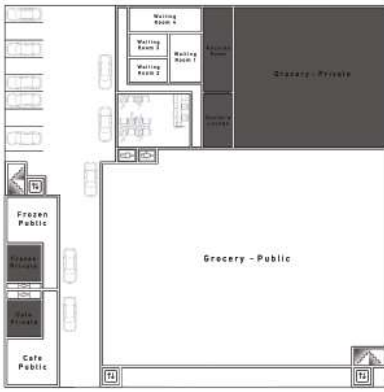




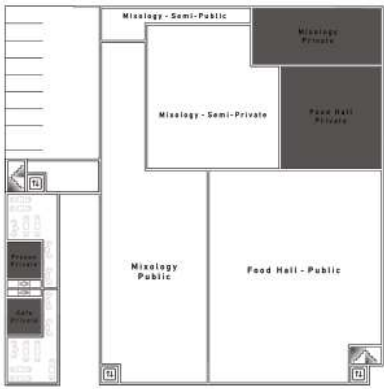
SOUTHBANK MIXED-USE PROPOSAL

The follow-up to the Avondale Grocer + Food Hall, the Southbank proposal aims to create a mixed-use space to provide key services for surrounding residents ranging from a grocery store, gym, cafe, shoe repair, etc. With limited parking, the design features drive-thru lanes for the cafe, ice cream store, pharmacy, and grocery store orders. The hope is to build a communal space that encourages pedestrians and bicyclists.

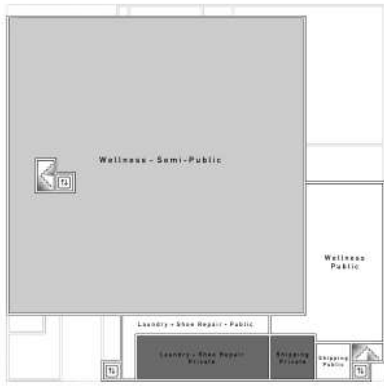




Level 1



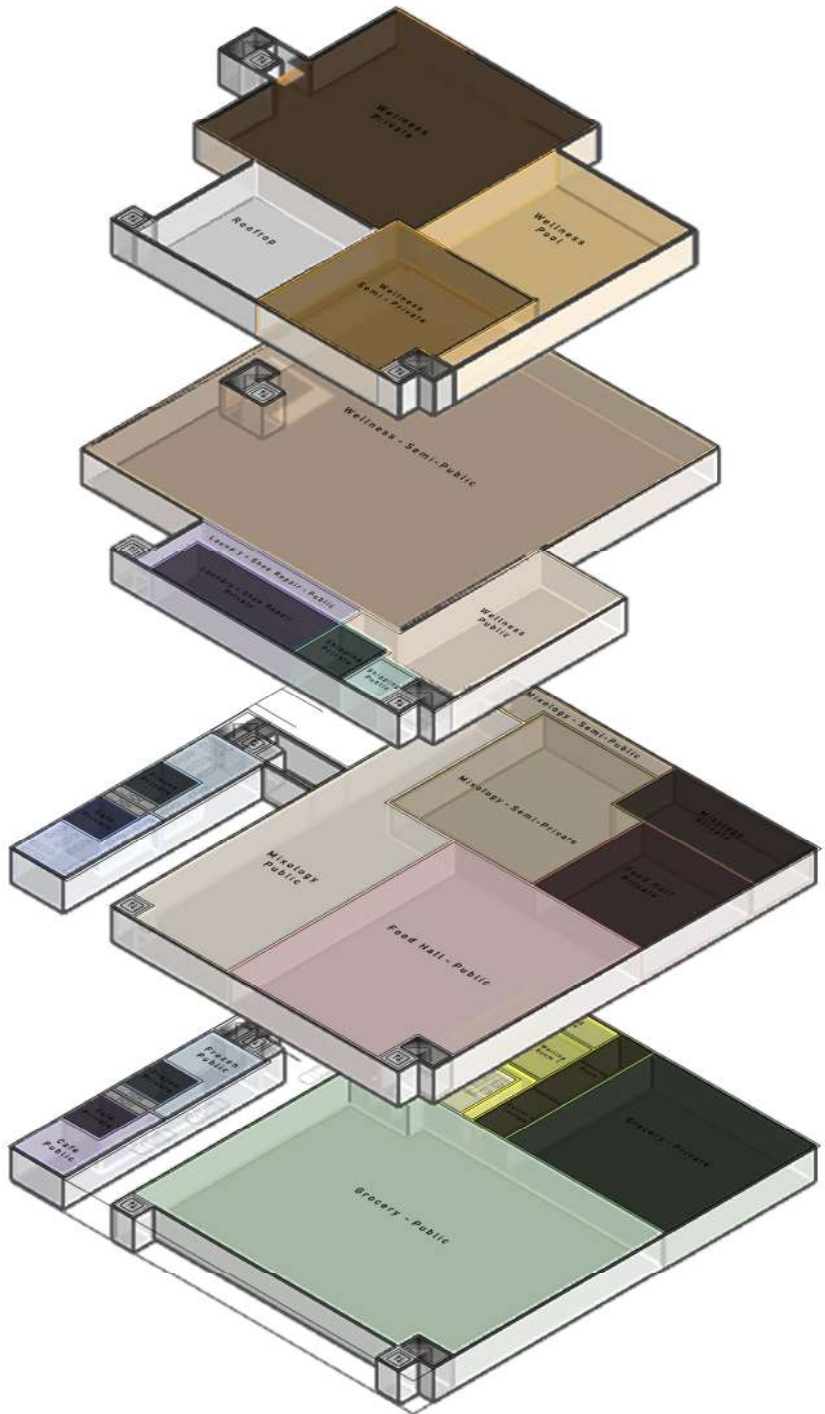
Level 2



Level 3

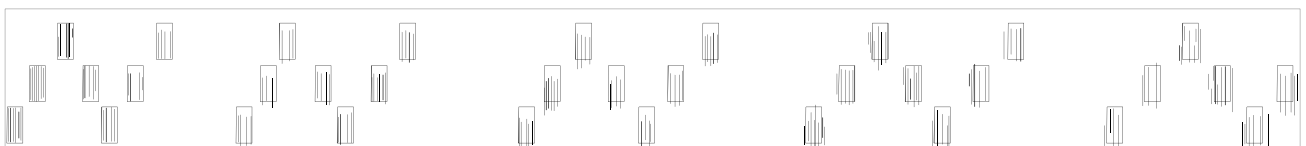
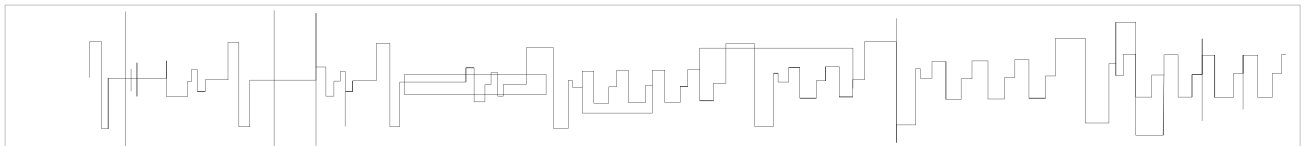
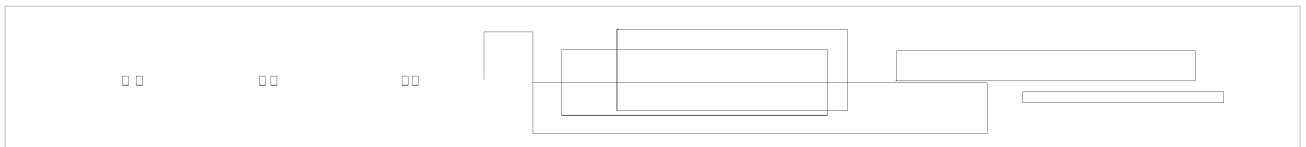
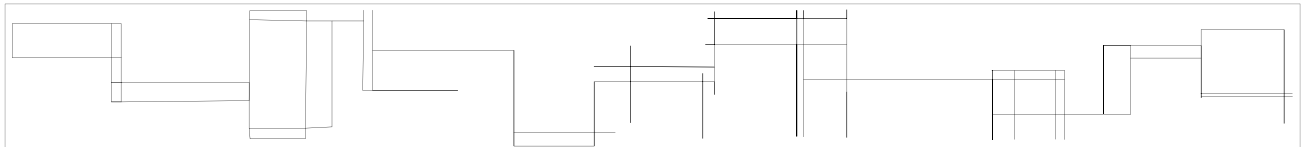
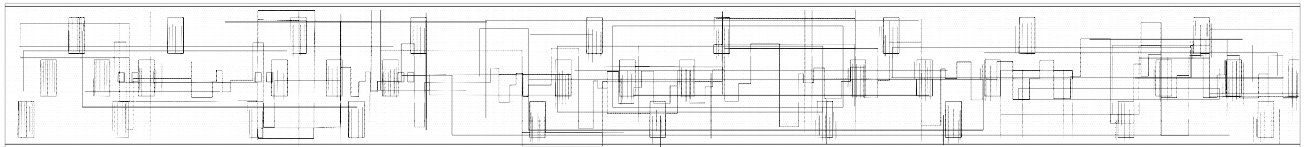
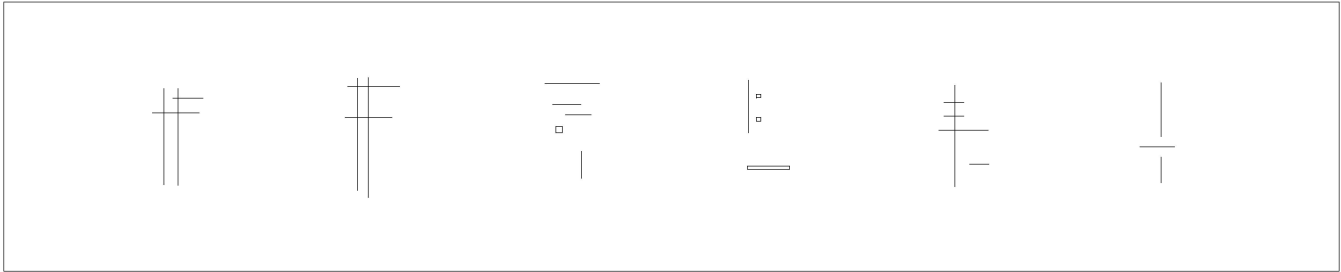


Level 4



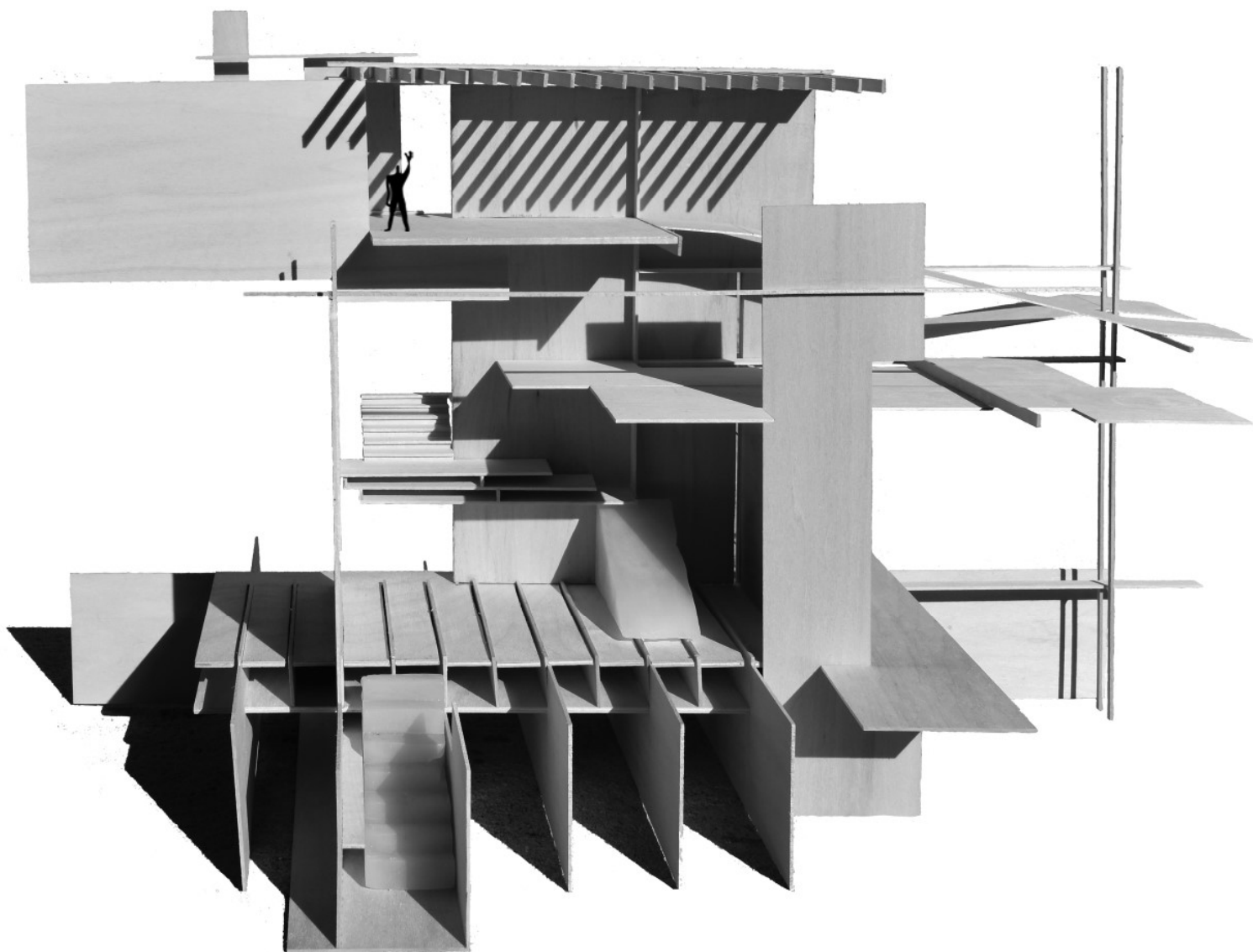
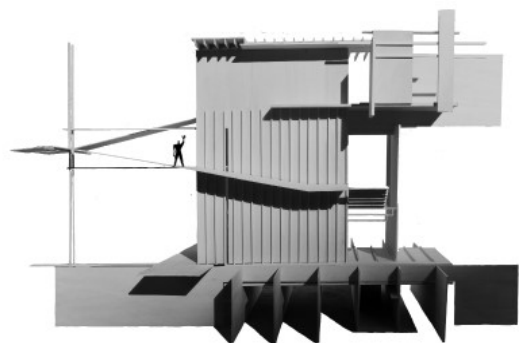
SONG

'Song' is an analysis of The Beatles' song, "Tomorrow Never Knows". The top drawing is a visual representation of the movement and rhythm of the song's six parts. Each layer corresponds to a different set of instruments and their journey throughout the piece with the top drawing overlaying all 6 layers.



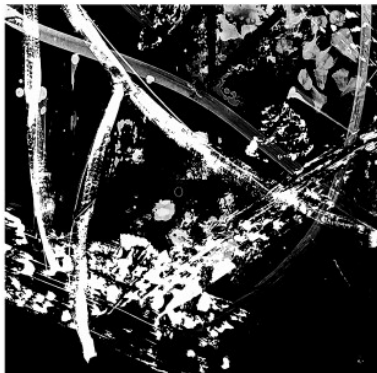
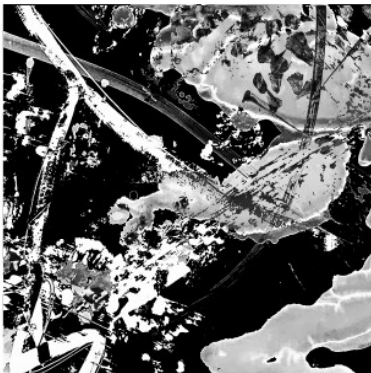
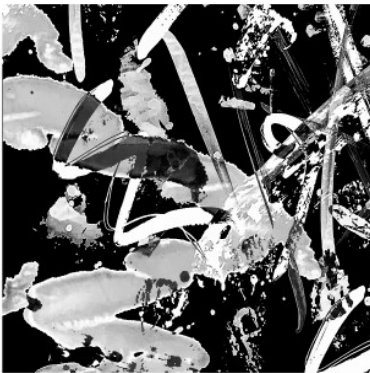
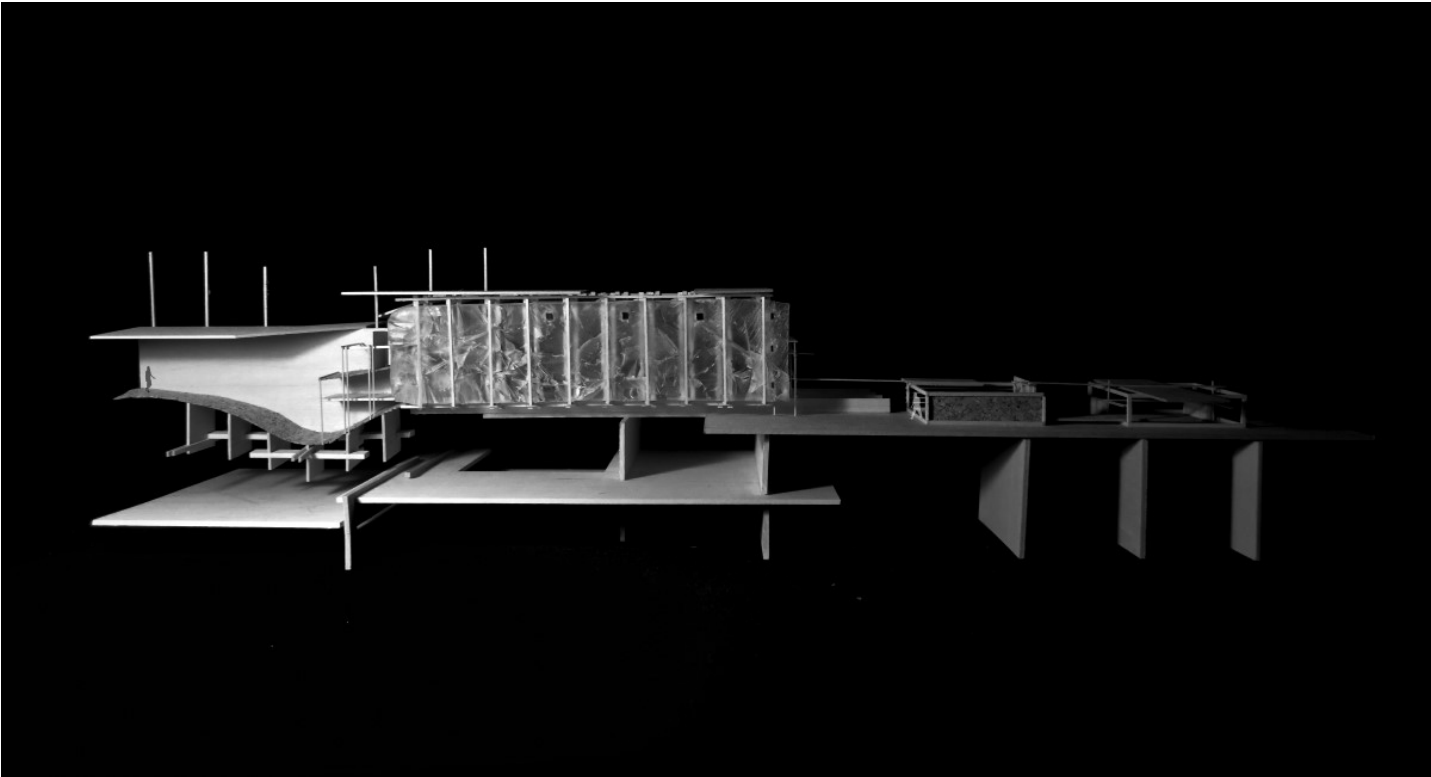
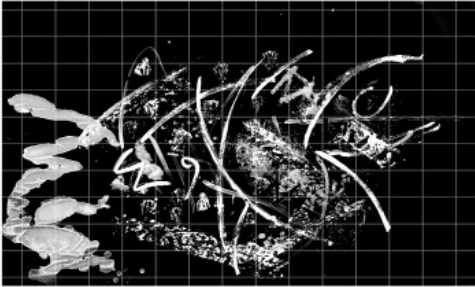
DOOR, WINDOW, STAIR

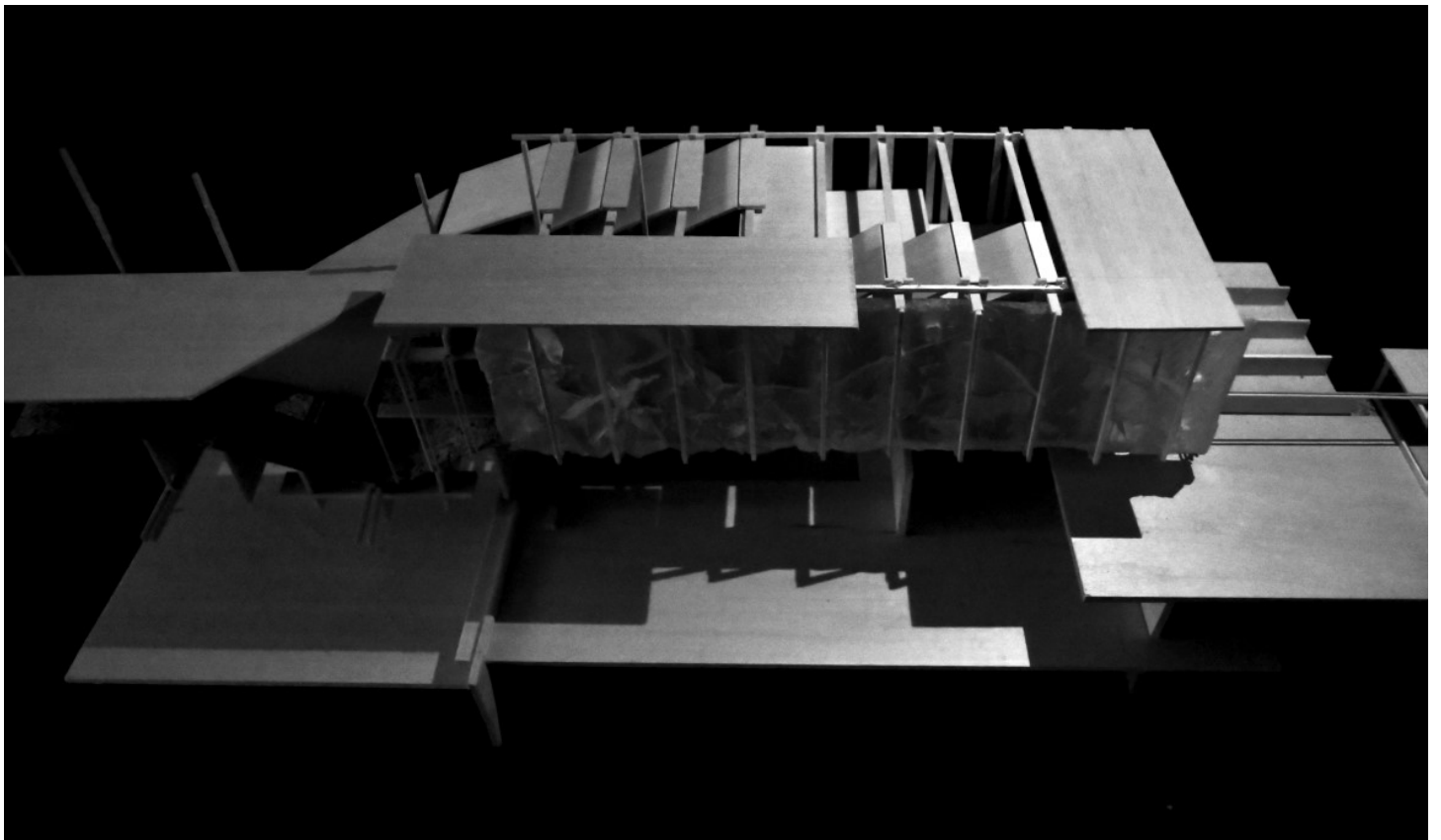
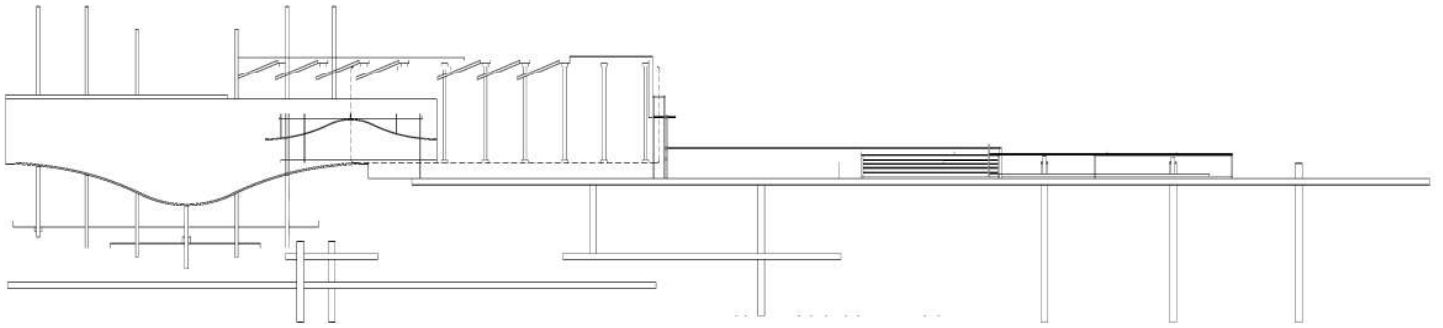
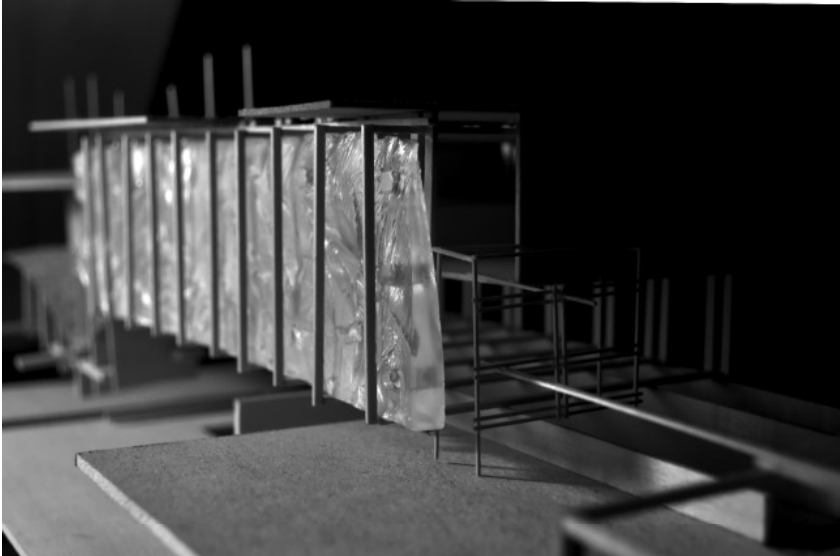
'Door, Window, Stair' was a preliminary study on structural envelope and aperture. We studied how light interacts with space and how different volumes have different qualities within a structure and have relationships in conjunction with one another. My specific professor encouraged material experimentation, so primary modes of transportation were constructed of glycerin.



RUINS

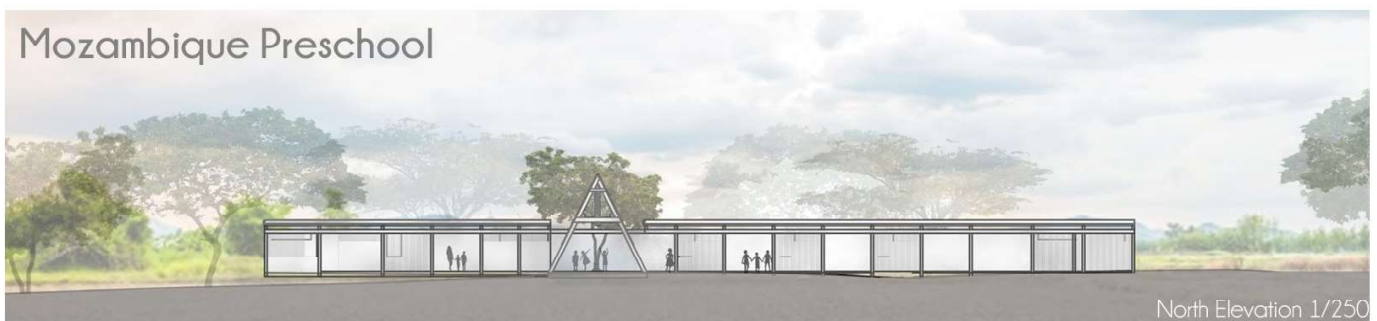
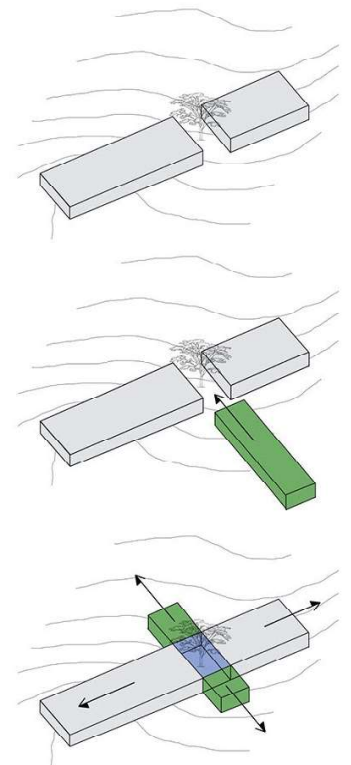
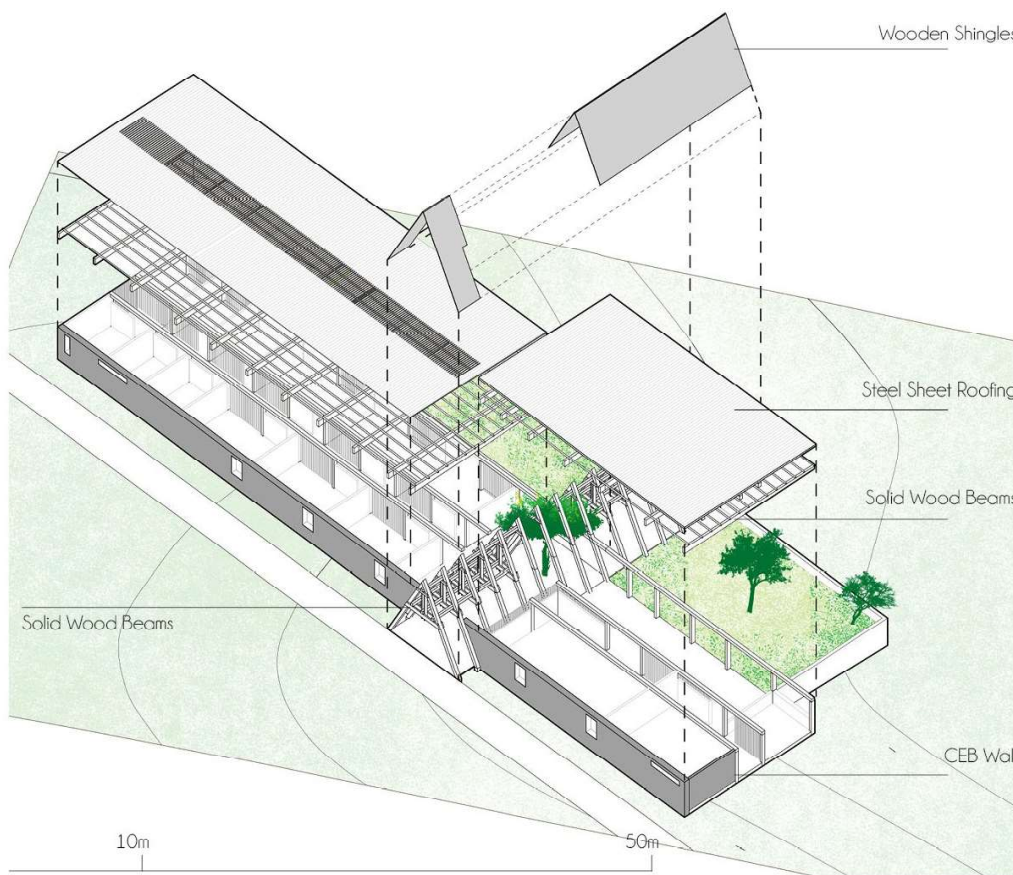
Ruins began with a painting using various paints and inks as an exercise. After selecting three areas of interest, I chose to experiment with how materials could create similar textures and transparencies. The primary materials are basswood, thinly sliced cork, and glycerin.

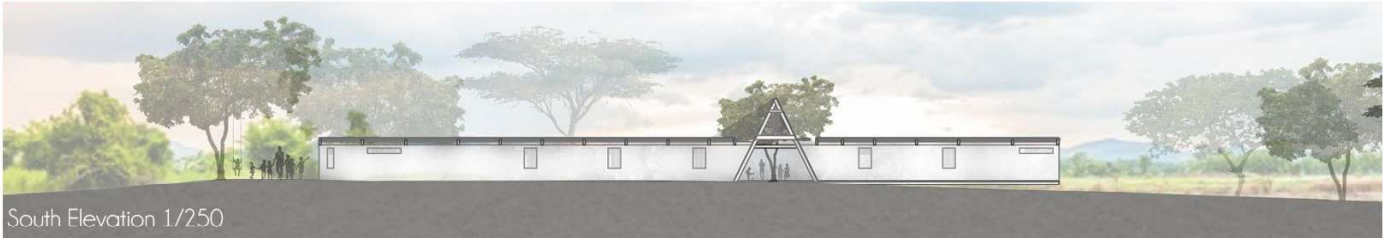




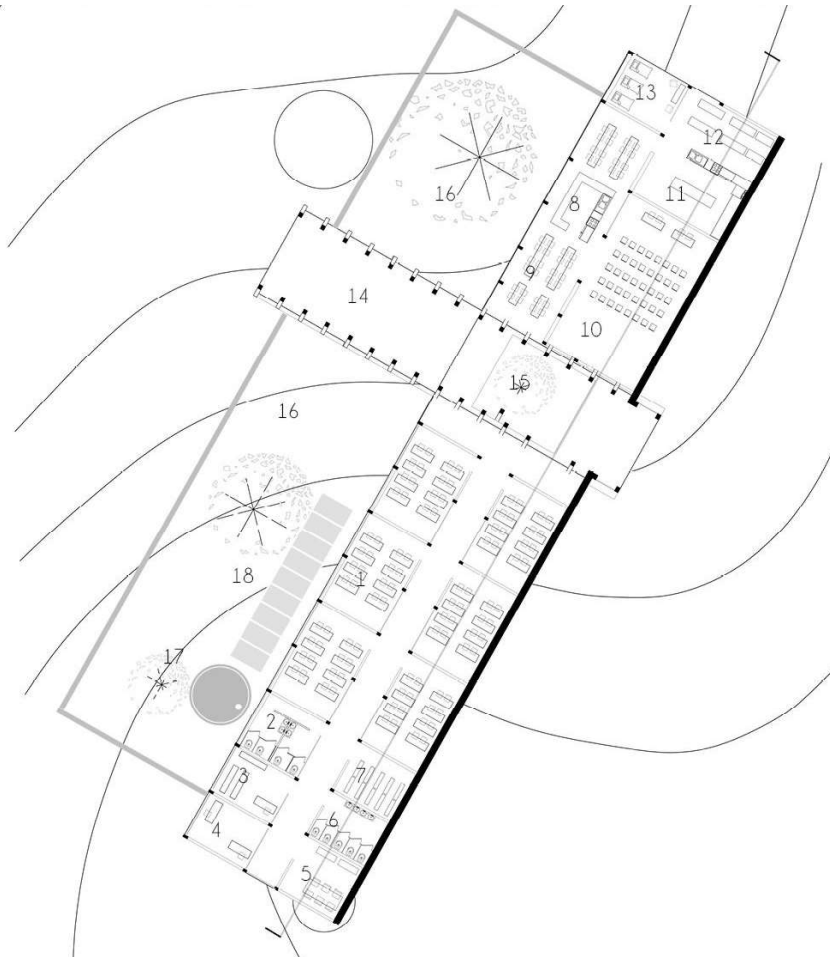
MOZAMBIQUE PRESCHOOL

The brief for this competition is to build a preschool for disabled and socially excluded children in Mozambique. Our design considered spaces that allowed flexible collaboration and can be constructed with locally sourced materials and labor.





South Elevation 1/250



Floorplan 1/200

1. Classroom
2. Children's Bathrooms
3. Janitor and Management
4. Principal and secretary office
5. Teacher's Room
6. Adult's Bathroom
7. Storage Units (Teaching and Cleaning Equipments)
8. Open Kitchen
9. Dining Room
10. Multipurpose Room
11. Closed Kitchen
12. Pantry
13. Infirmary
14. Covered Schoolyard
15. Courtyard
16. Orchard
17. Water Tank
18. Solar Thermal Collector



Exterior Perspective

61478062

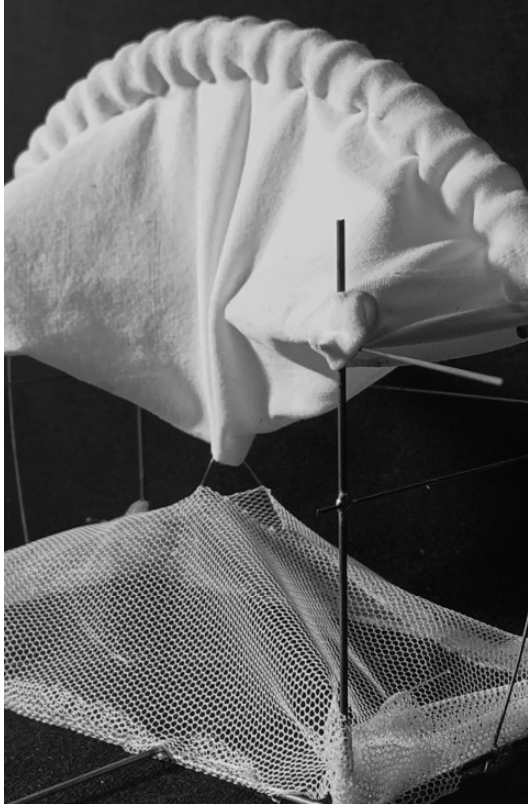
GENTRIFICATION + THE CITY

The challenge for the 2019 Barbara G. Laurie Student Design Competition by NOMA (National Organization of Minority Architects) was to design a mixed-use space in the East Flatbush neighborhood of Manhattan composed of mixed-income residential units as well as commercial, retail, and community spaces while addressing concerns of gentrification and the dynamics of a mixed-income community as well as the local culture.



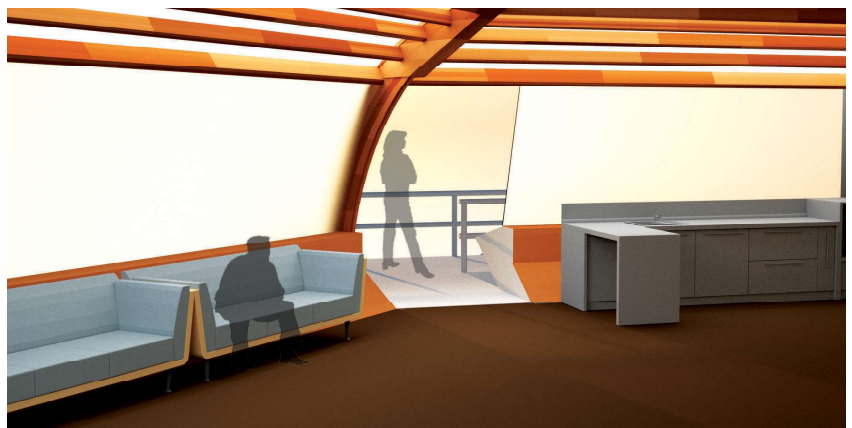
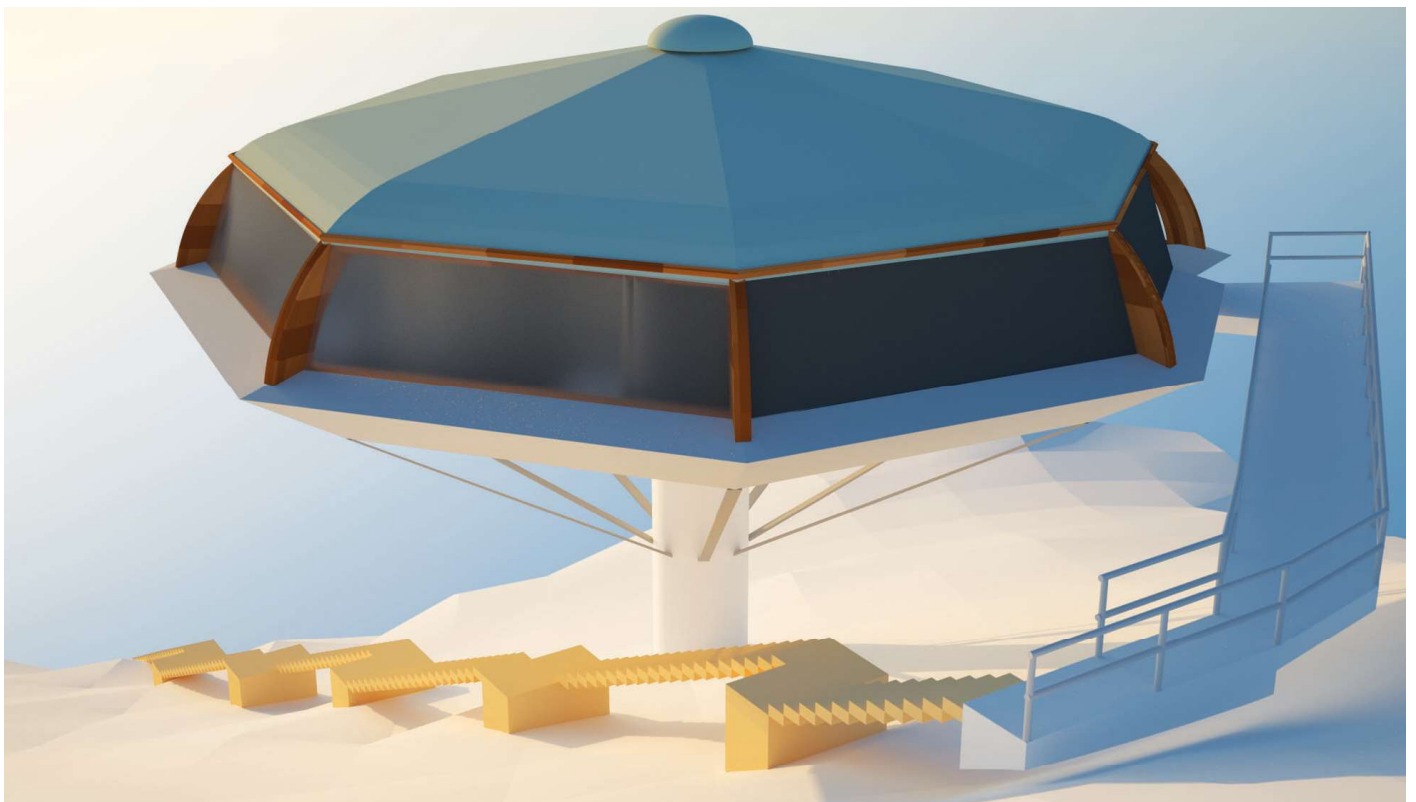
FABRIC STUDIES

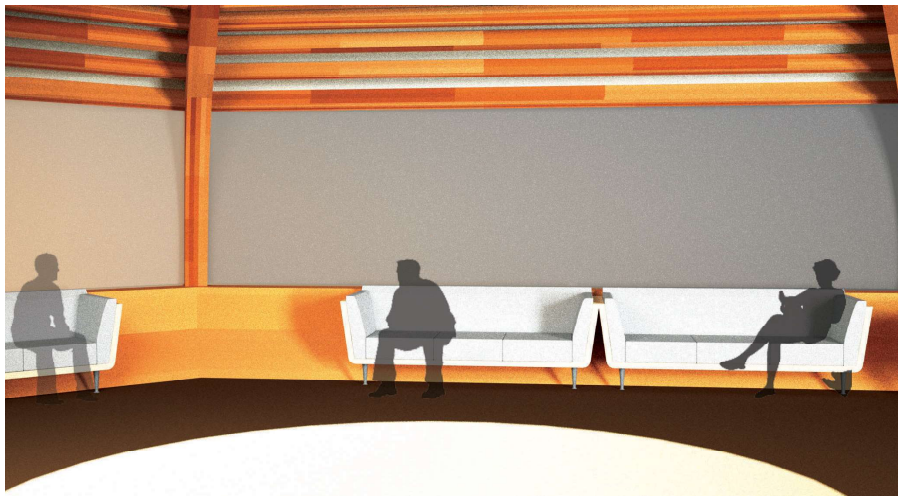
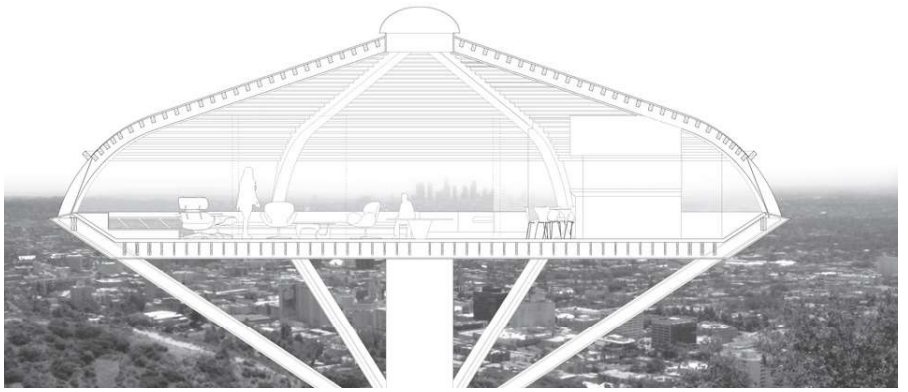
The premise of this study was to explore tensile qualities in various materials that could be exploratory and architectural in nature.



MALIN RESIDENCE

The introductory digital studies course assigned a project of reconstructing a current architectural work to showcase skills learned throughout the semester. My group selected the Malin Residence in Los Angeles, California as it provided geometric challenges and altitudes to consider.





SPECIAL INTERESTS: PHOTOGRAPHY

Prior to design school, my affinity for architecture was expressed through assisting my mom who is a realtor and photographing spaces during my travels. In clockwise order, you will see the Chicago skyline, the Great Wall, the view from a lighthouse in Maine on a cloudy day, Boeing International Headquarters in Chicago, Paris from the altitude of the Eiffel Tower, and a street food market in Copenhagen, Denmark.



