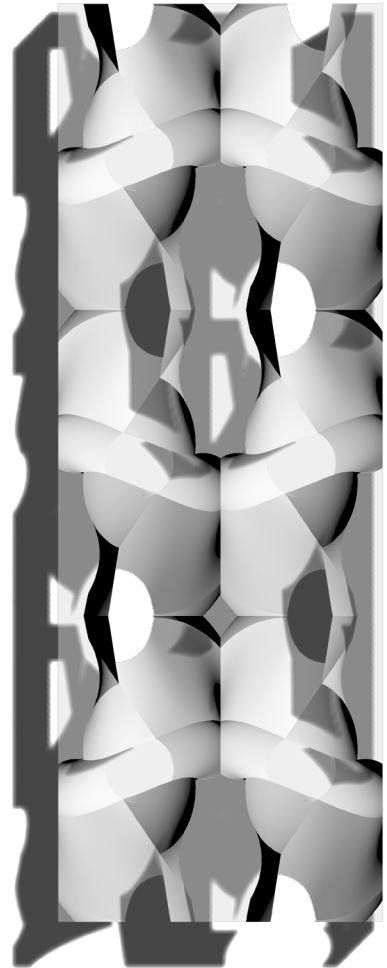


SELECTED WORKS
KEVIN CHEUNG



PELLUCID
Museum Extension

4p

HI-LIGHT
Social Housing

10p

MIN-MAX
Urban Housing

16p

BIO-LOOM
Textile Market

20p

PROFESSIONAL

24p

Town House

Gallery Space

Studio Apartment

OTHERS

30p

Downtown Office

Croffead House

Water Chamber

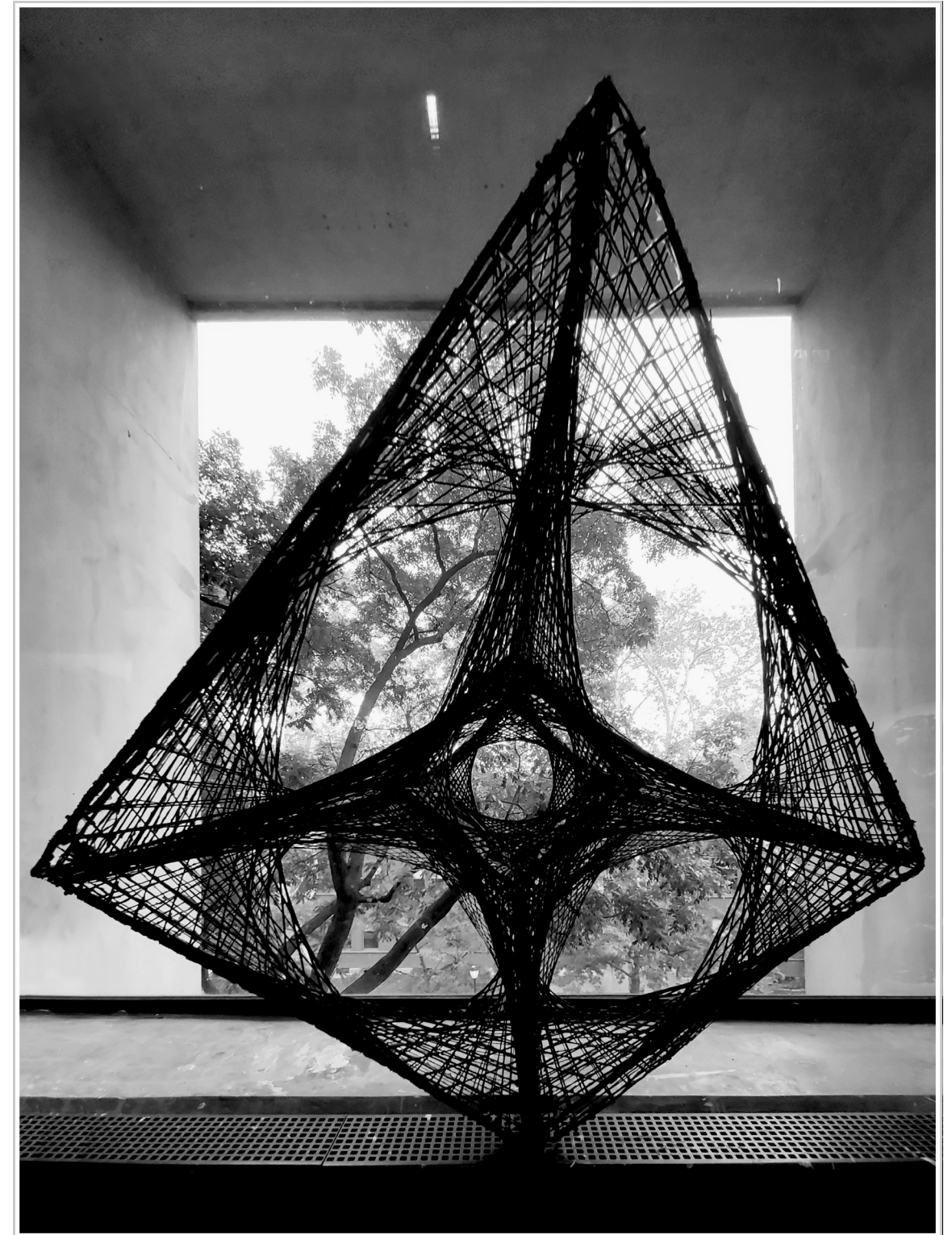
Untold Story | Hombih Cah

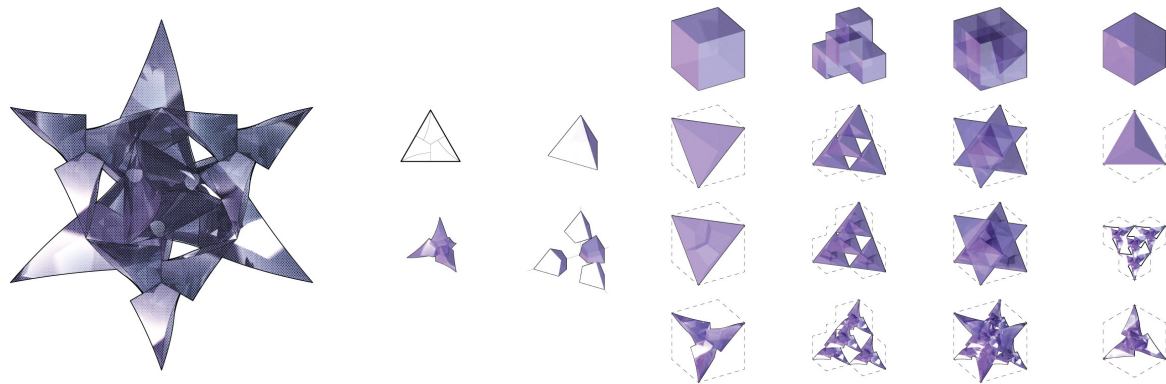
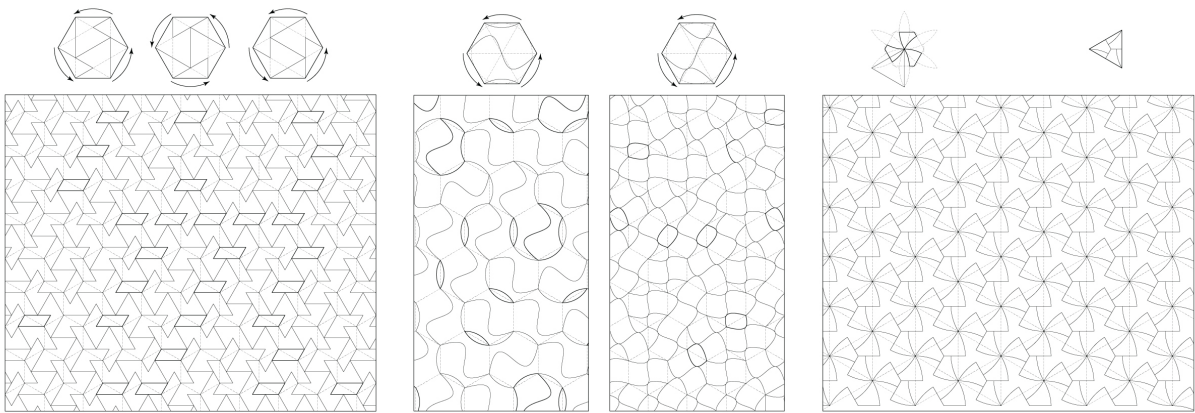
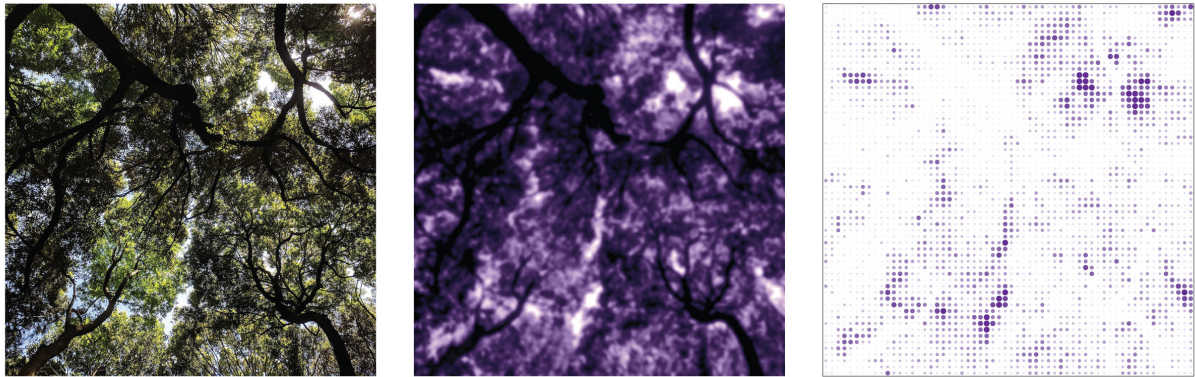
PELLUCID

MUSEUM EXTENSION
PHILADELPHIA, PENNSYLVANIA

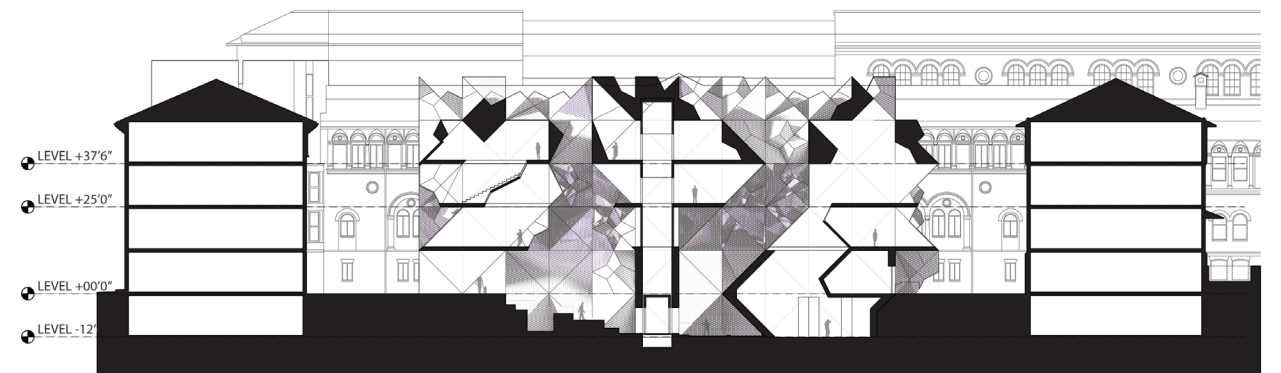
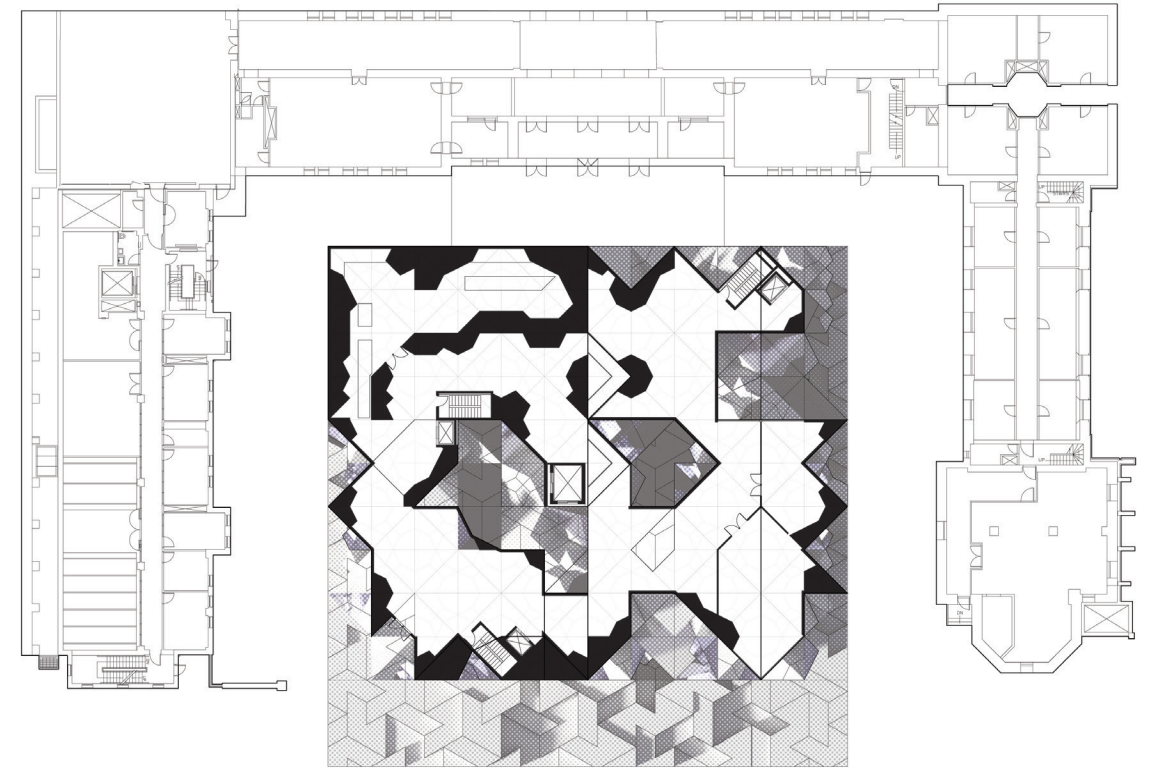


Takes a critical stance on viewing the museum artifact as an aesthetic experience by engaging the body in the process of capturing views. The body's relationship to space - how moving body deforms the invisible space-time grid - produces new spaces as a result of movement over time. The Tesseract, which exists in the fourth dimension is represented in the third dimension as a projection of a cube moving within a cube. The logic and transitional properties of space created by the tesseract to derive form with inherent structural strength, viewing potentials, and two-dimensional shadow projections that trace the movement of the sun throughout the day. The body in motion completes the viewing of the cabinet, linking the two in space and time. Challenging the viewing mechanism of how artifacts are displayed in the Museum, the movement of artifacts are hidden from the public. By a series of glass through the project the movement of artifacts become part of the exhibition, interweaving the public and private spaces. The trechut tiling is reinterpreted as circulatory elements along a grid. As the grid inherits movement from the tiling, geometric substitution is used to generate the interior form of the project.

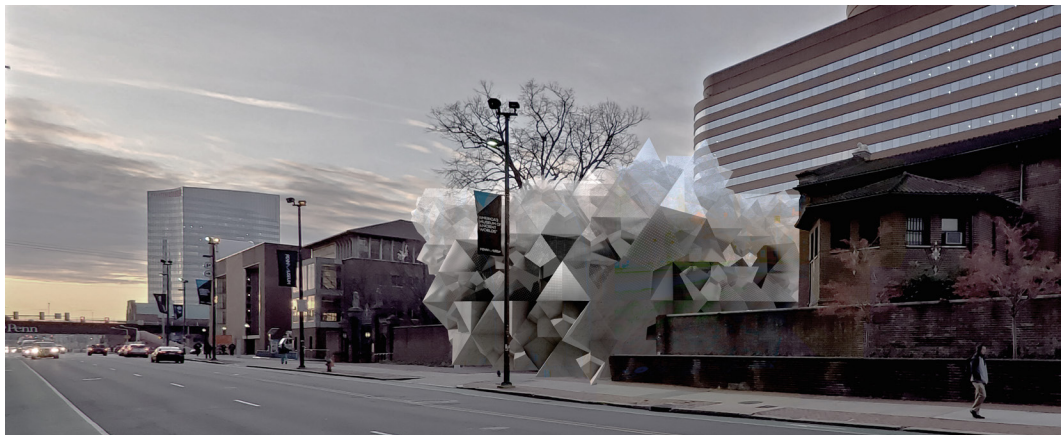




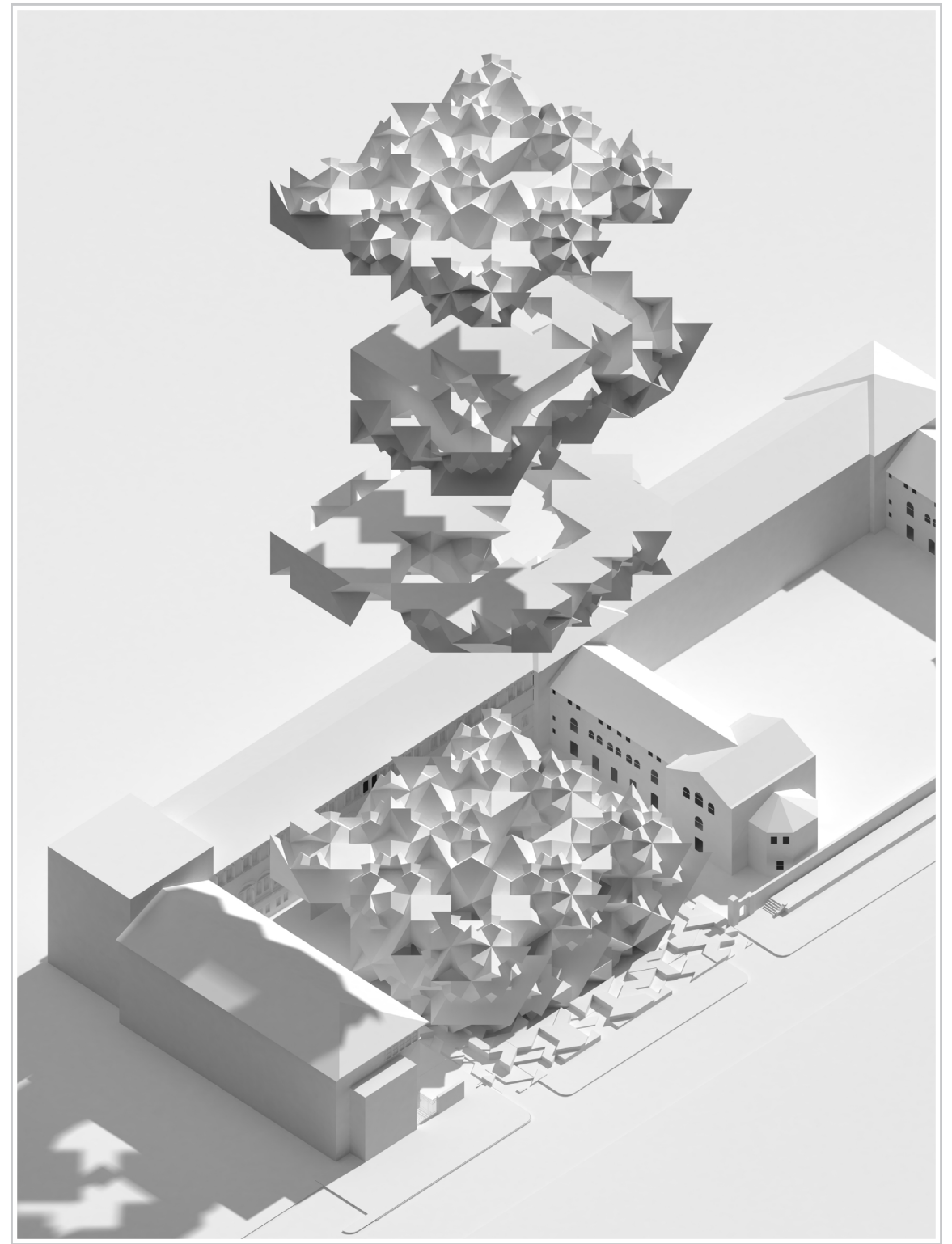
STUDY LEAF CANOPY (TOP) | SUBSTITUTION (BOTTOM)



DRAWING PLAN (TOP) | SECTION (BOTTOM)



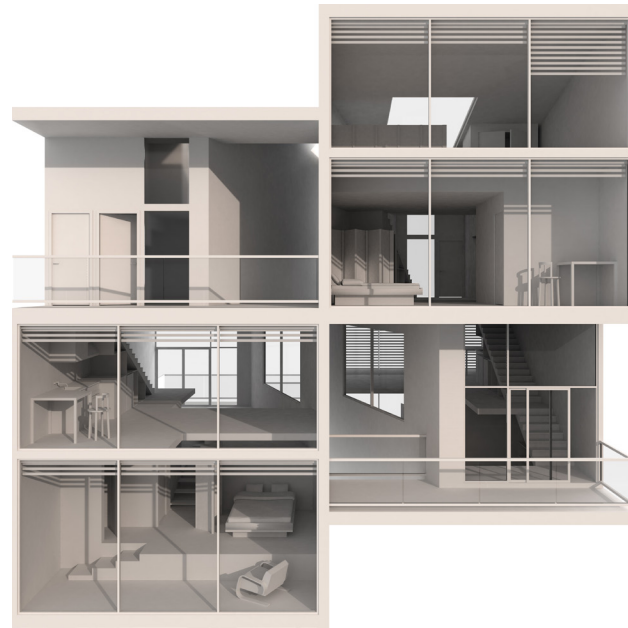
RENDER SITE RELIEF (TOP) | VIEWING MACHINE (BOTTOM)



RENDER EXPLODED AXONOMETRIC

HILIGHT

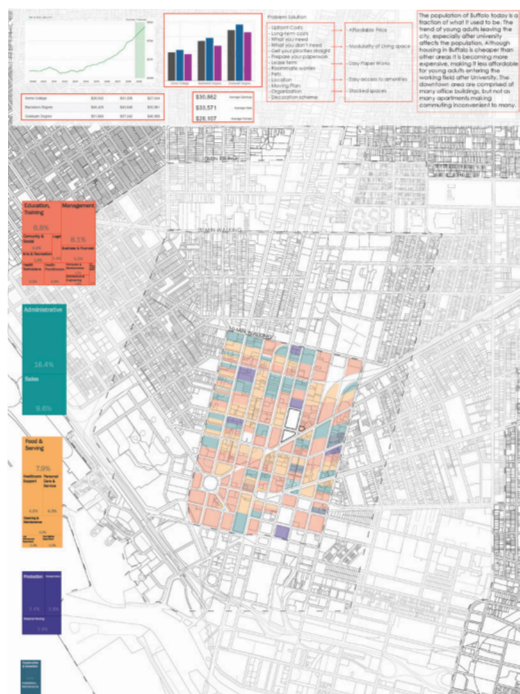
SOCIAL HOUSING
BUFFALO, NEW YORK



Weaves together split level housing and a set of “play spaces” that facilitate social interaction and healthy living. Multi-level housing units for recent college graduates transitioning into the workforce. HILIGHT provides potential for social interaction through the woven circulatory paths within and around the living spaces. The addition of convenient amenities throughout the building providing meals, laundry, and grooming services help residents with their daily life. The play spaces create a porous base that flows up into the housing stack on the southwest corner that opens views to downtown. The idea was to focus on convenience, social amenities with the theme of high energy environment. These help to draw in young adults.

As young adults graduate University they lose most of their opportunities for social interactions. While putting their focus on employment there is less time spent hanging out with others. More effort and less time is required to socialize, something that young adults can’t afford. The adjacencies of units allow residents to experience the city through the building. Vertical slopes create cuts in the housing rows that make the building double fronted, and create light wells between apartments.

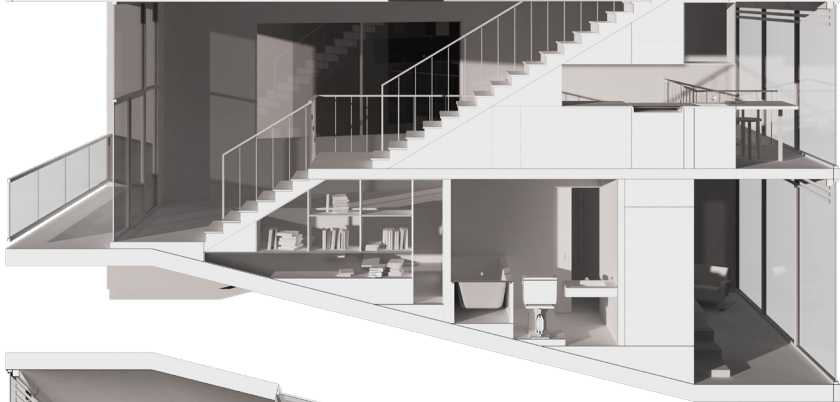




APARTMENT A -



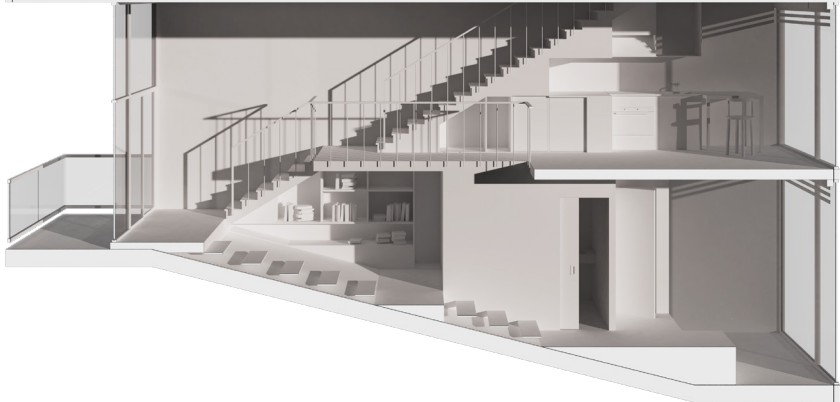
APARTMENT B -



APARTMENT A -

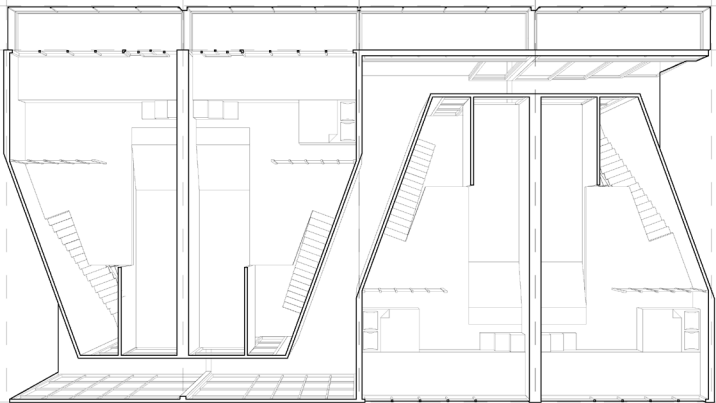


APARTMENT B -

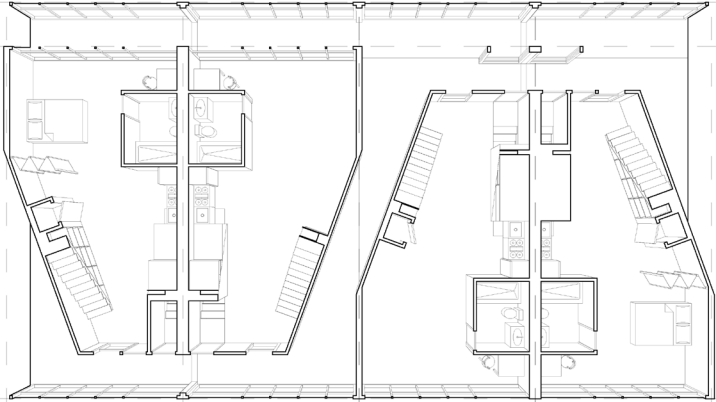


RENDER SECTION

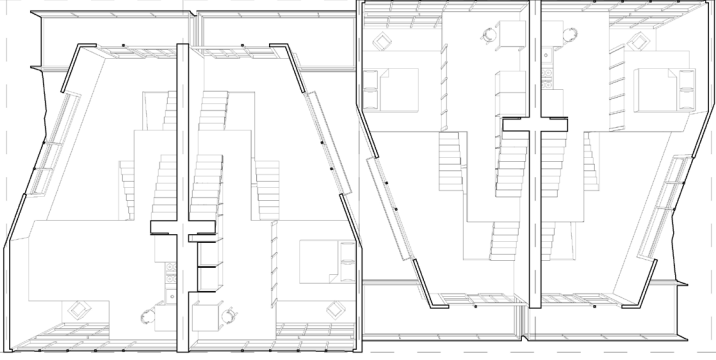
LEVEL 4



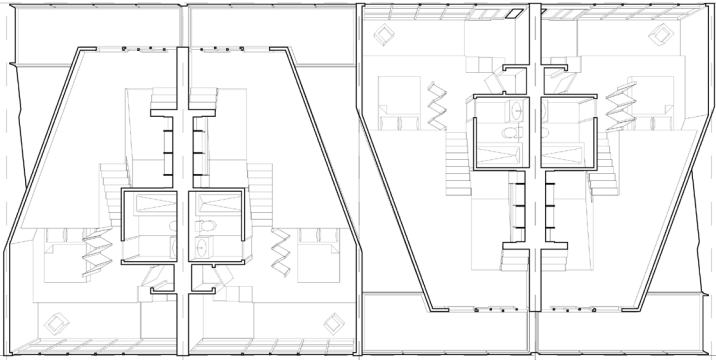
LEVEL 3



LEVEL 3



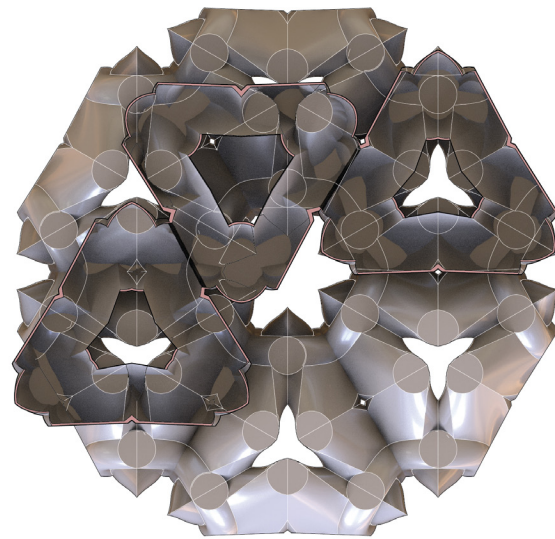
LEVEL 3



DRAWING PLAN PERSPECTIVE

MIN-MAX

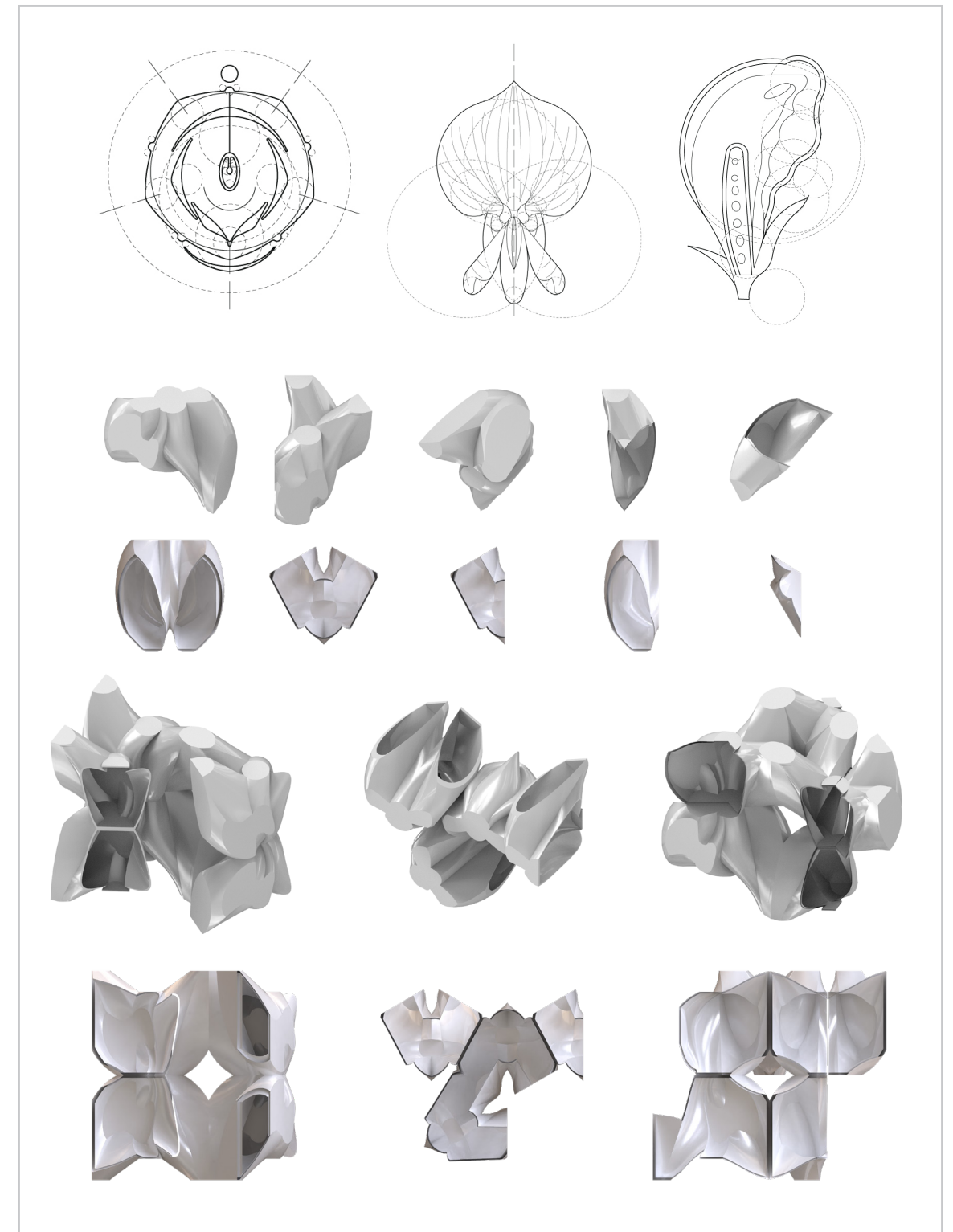
URBAN HOUSING
MANHATTAN, NEW YORK

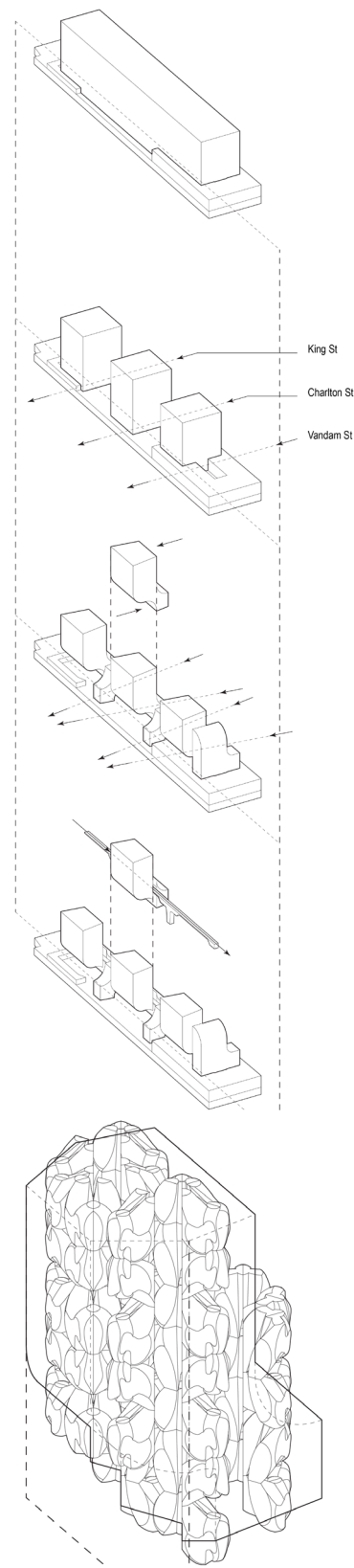


Series of three vertical housing towers above an existing UPS building. Located within the urban fabric of New York City's dense cityscape, the issue of comfortability arises. The projects seeks to alleviate the fast urban pace of the city that bike-messengers are accustomed to. Through the three housing towers, an elevated bike lane runs through all three towers allowing bike messengers to directly move in and out of the tower. While other residents are able to circulate through the building separately.

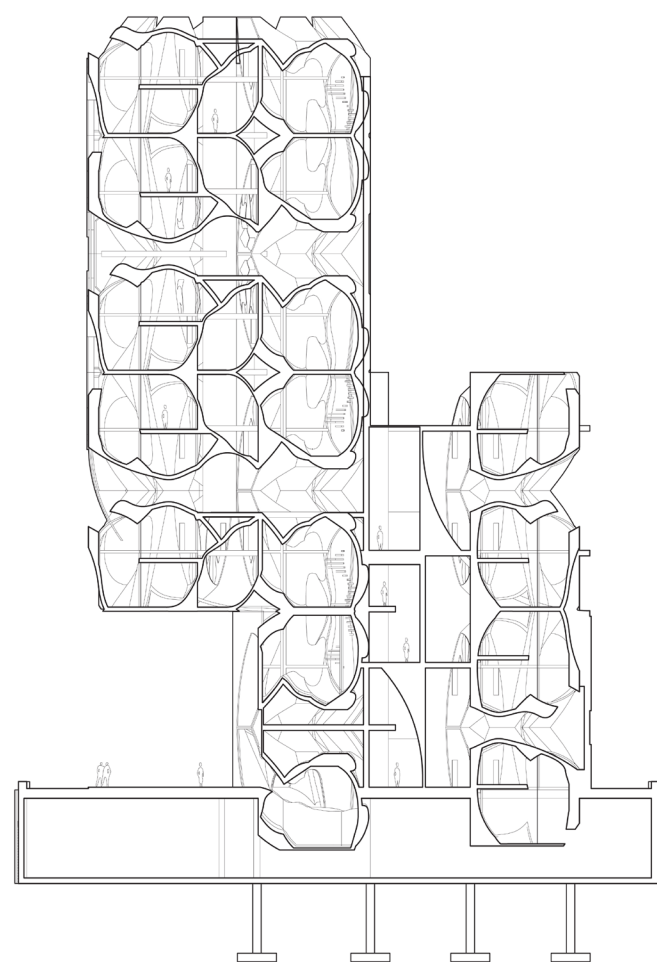
Another component of the project is the cohabitation of peacocks. The comfortability of peacocks to roam around, yet also have a shelter through the lower levels of the housing allows them to live alongside people.

The units, developed from a generative process from study Wisteria plants, feature a compact living space. The modularity of the units allow for each unit to receive light and the internal circulation between the units are centralized. The tower takes advantage of the viewing experience of the site, with New Jersey right across from the Hudson River.

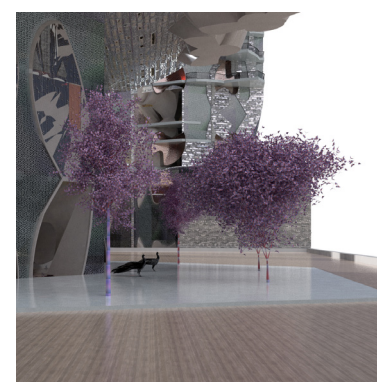
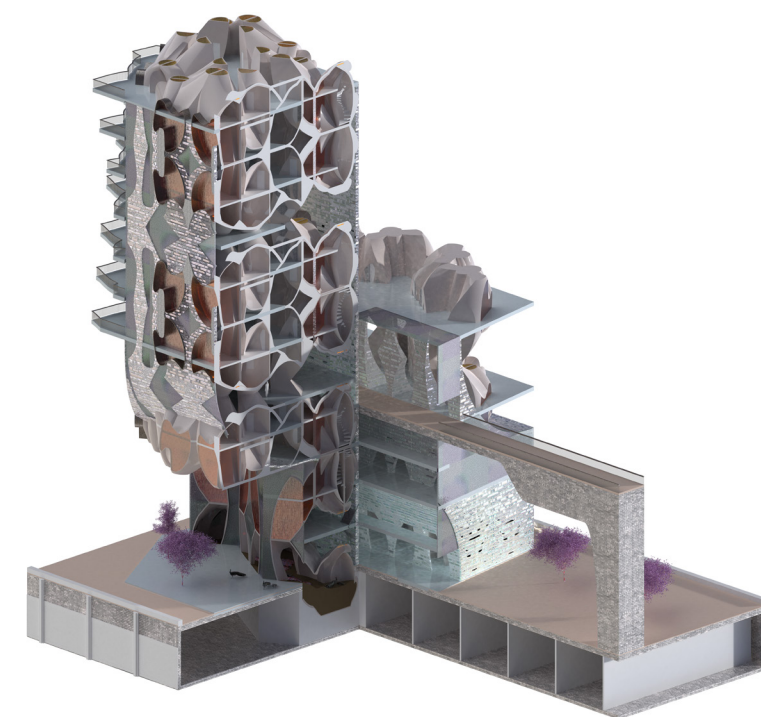
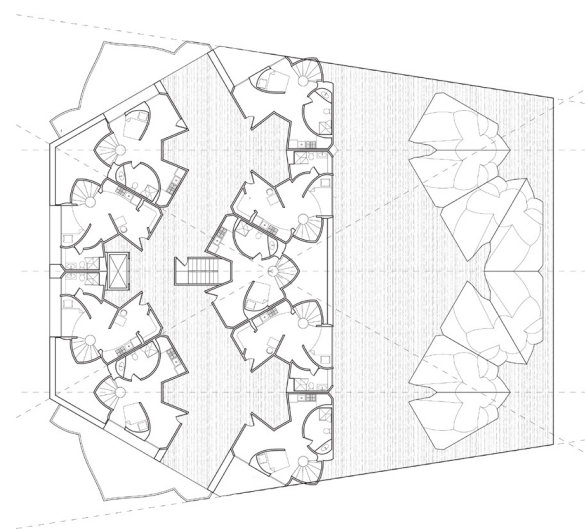




DRAWING MASSING



DRAWING SECTION (TOP) | PLAN (BOTTOM)

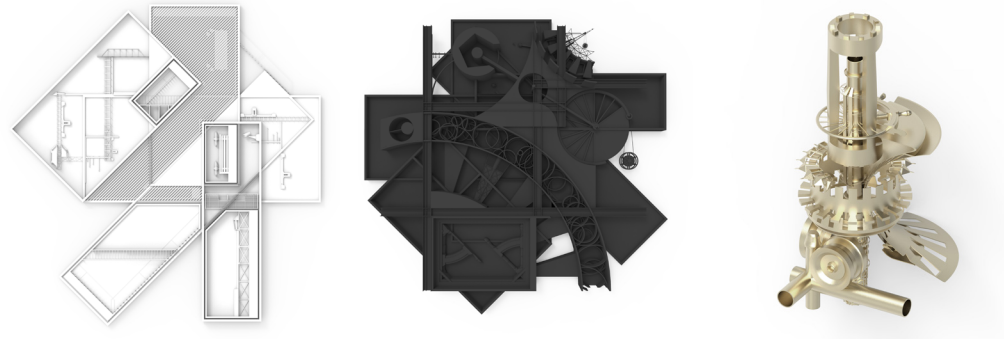


RENDER AXONOMETRIC CHUNK (TOP) | SITE RENDER (BOTTOM)

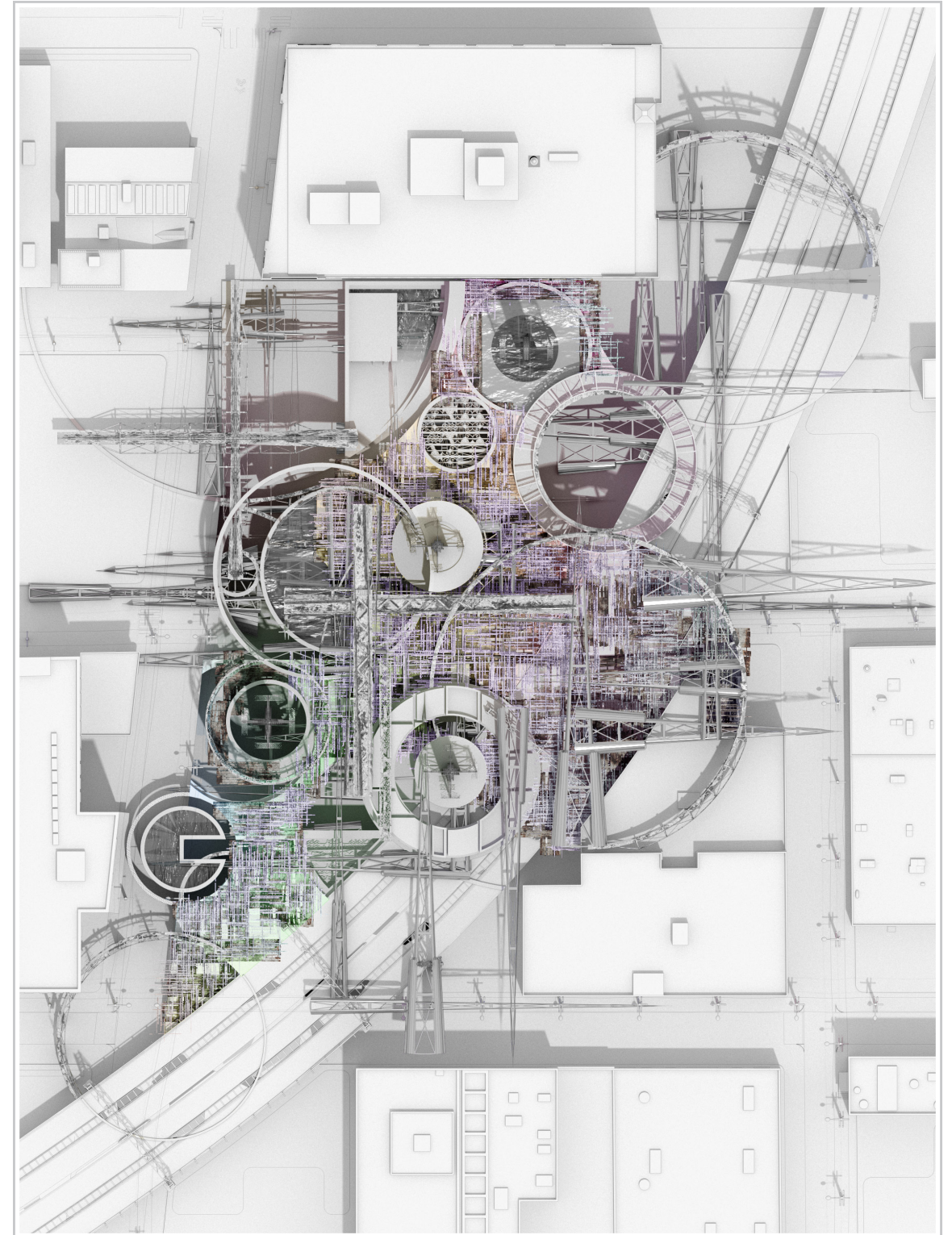


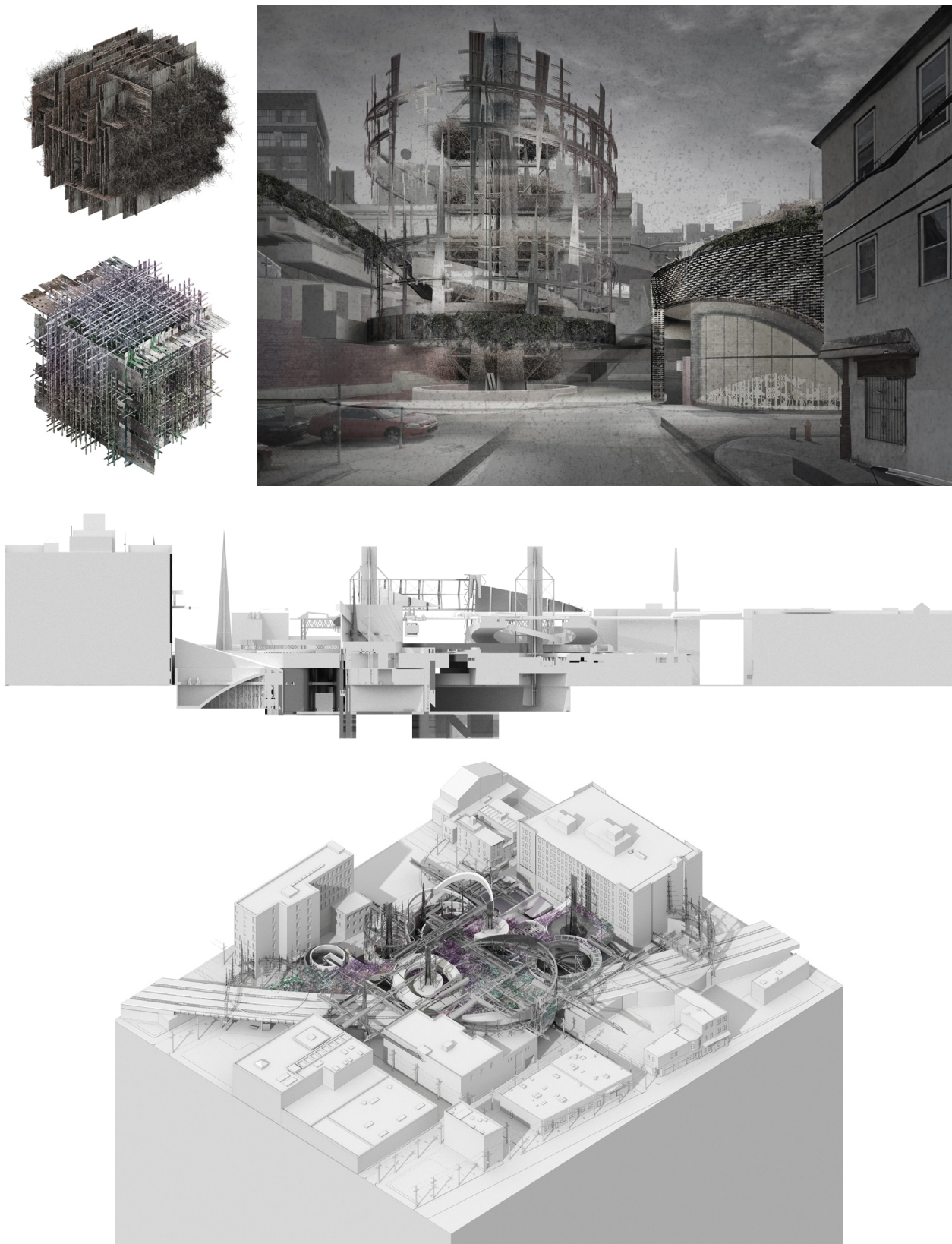
BIO-LOOM

TEXTILE MARKET
PHILADELPHIA, PENNSYLVANIA

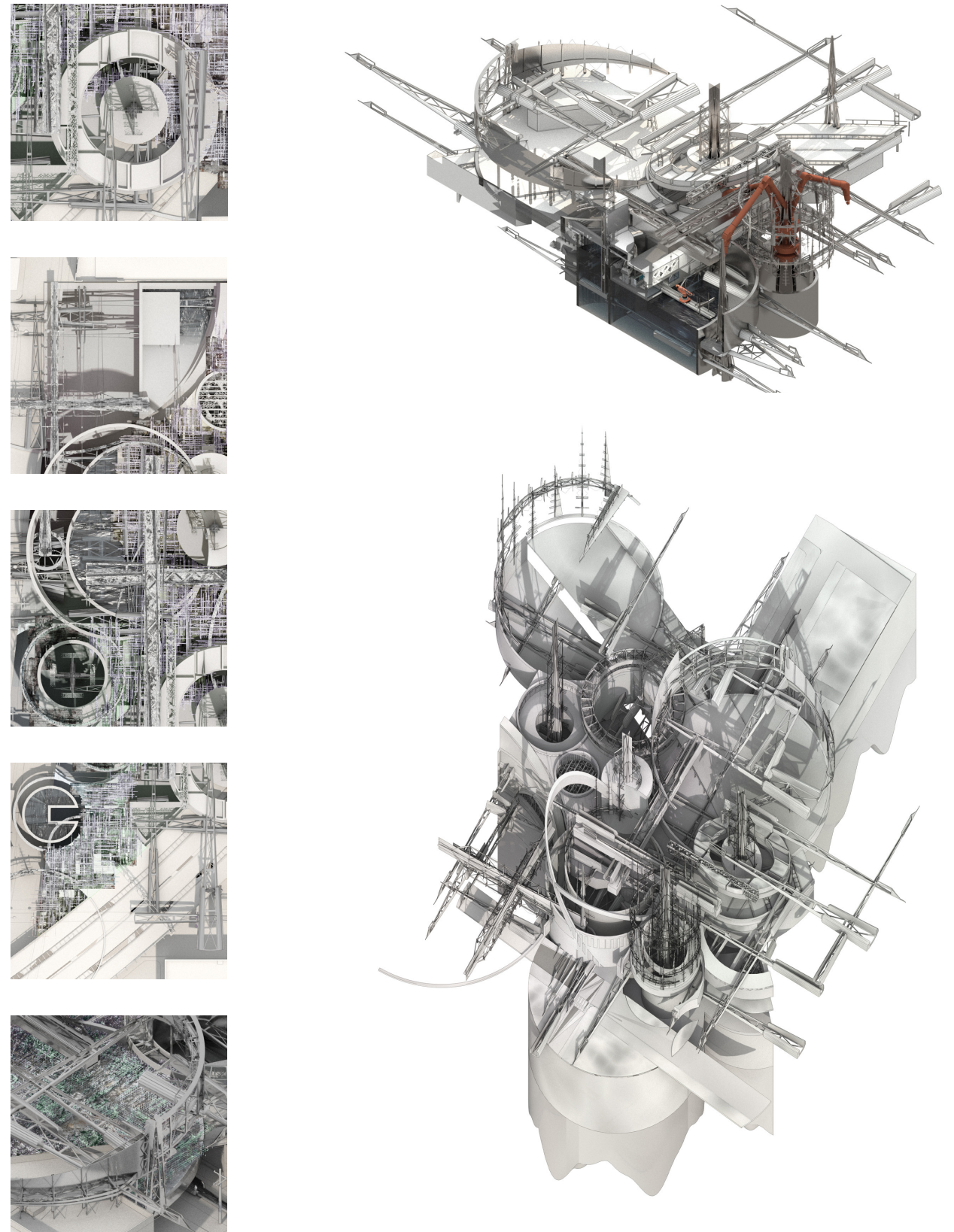


Textile market seeking to revitalize the textile industry in Philadelphia. The textile industry, which has a long history that goes back to the founding of Philadelphia, declined dramatically in the 20th century as part of a broader deindustrialization at the time. The mechanization of textile manufacturing gave rise to the automation of production but declined after WWII when cheaper labor was found elsewhere. Today many textile industry comprise mostly of smaller firms with specializations in customization. The market brings the textile industry into the contemporary era. Today the integration of bio-degradable products opens up possibilities in the industry. The market creates biomes where organisms such as crustaceans and insects are harvested for their protein. The soluble proteins are the main ingredient for the 3d-printing fabrication of textiles. The polycentric spheres become circulatory devices for these biomes allowing for different ecologies throughout the seasons. Viktor Sokolsky's "art as Technique" critiques against automatization through perception. To defamiliarizr the object so that it is not automatically recognized is the essence of artistic aesthetics.



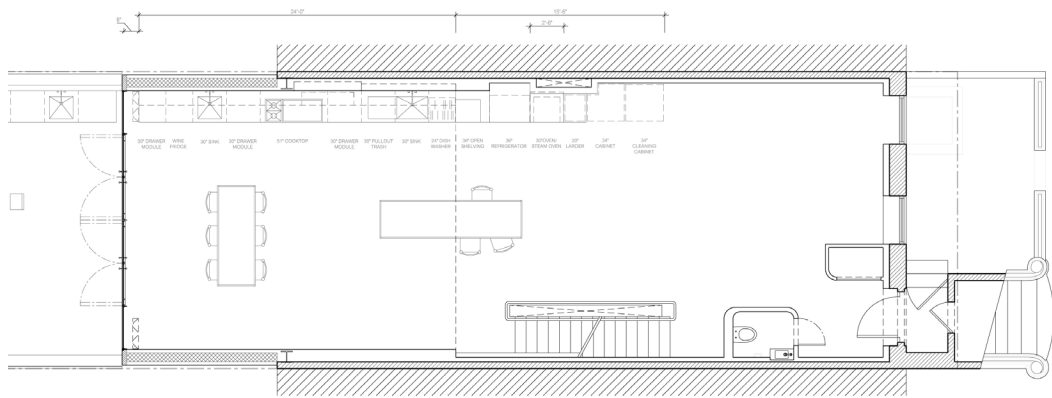


RENDER MATERIAL STUDY (TOP) | SECTION RELIEF (BOTTOM)



RENDER CIGNETTES (RIGHT) | AXON CHUNKS (LEFT)

TOWNHOUSE
INTERIOR RENOVATION AND REAR ADDITION
BROOKLYN, NY

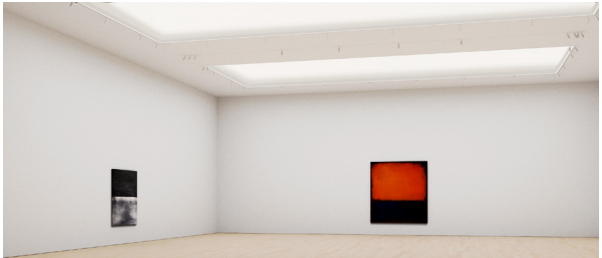
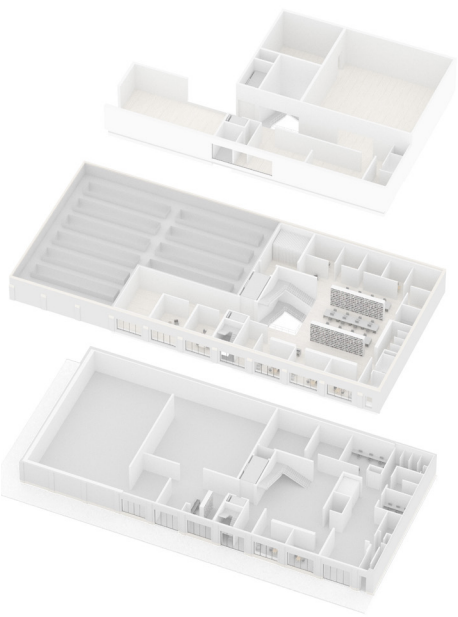
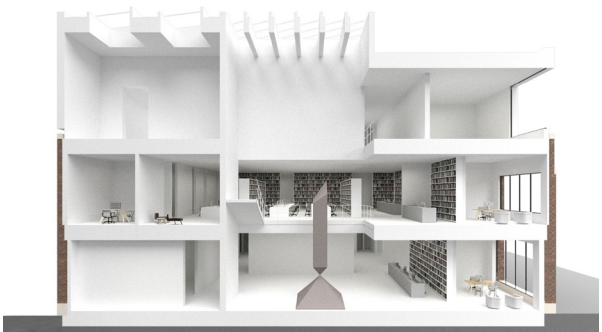


1 DINING ROOM ENLARGED PLAN

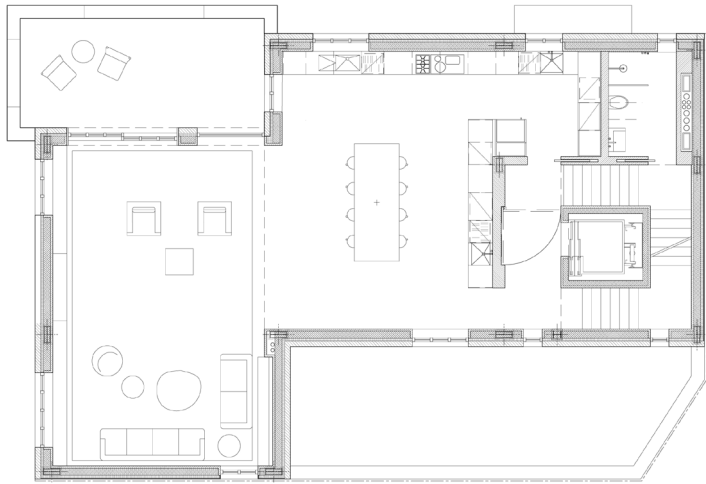


2 DINING ROOM ENLARGED ELEVATION

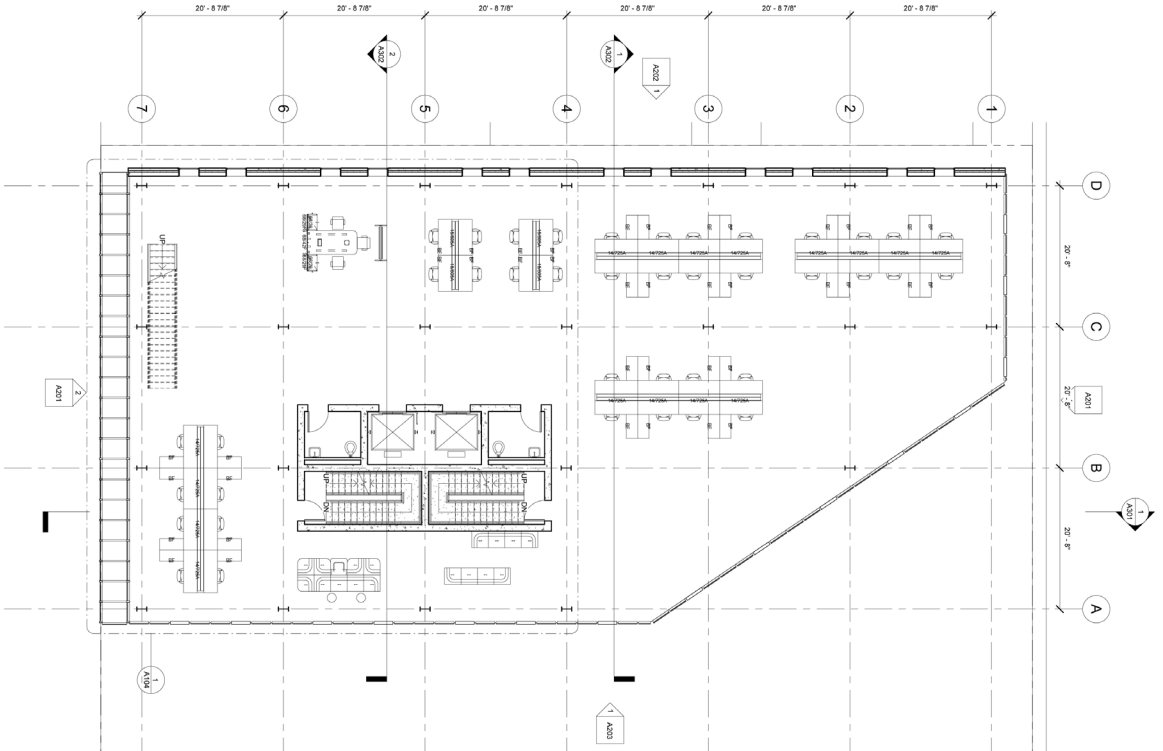
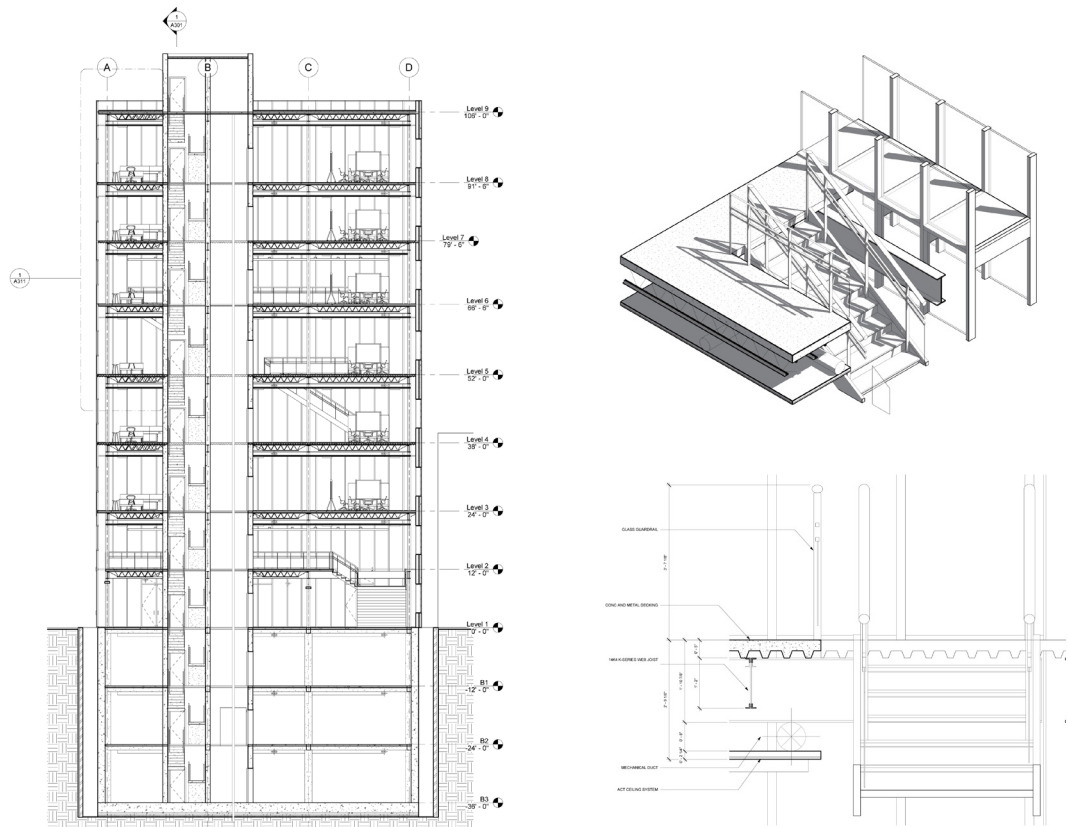
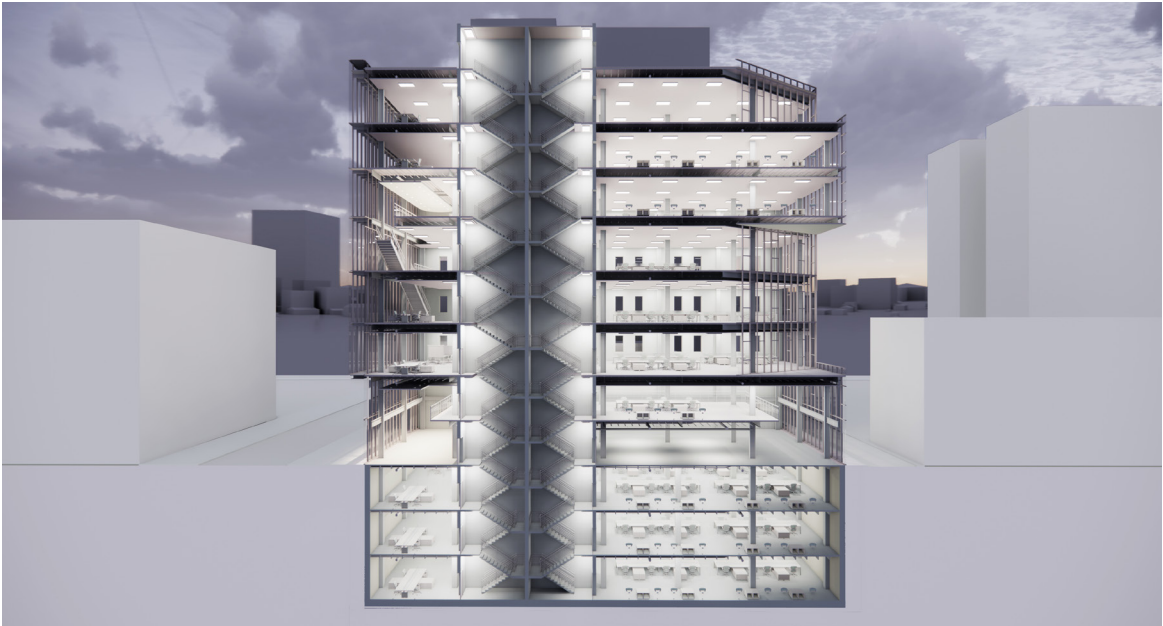
GALLERY SPACE
INTERIOR AND EXTERIOR RENOVATION
NEW YORK, NY

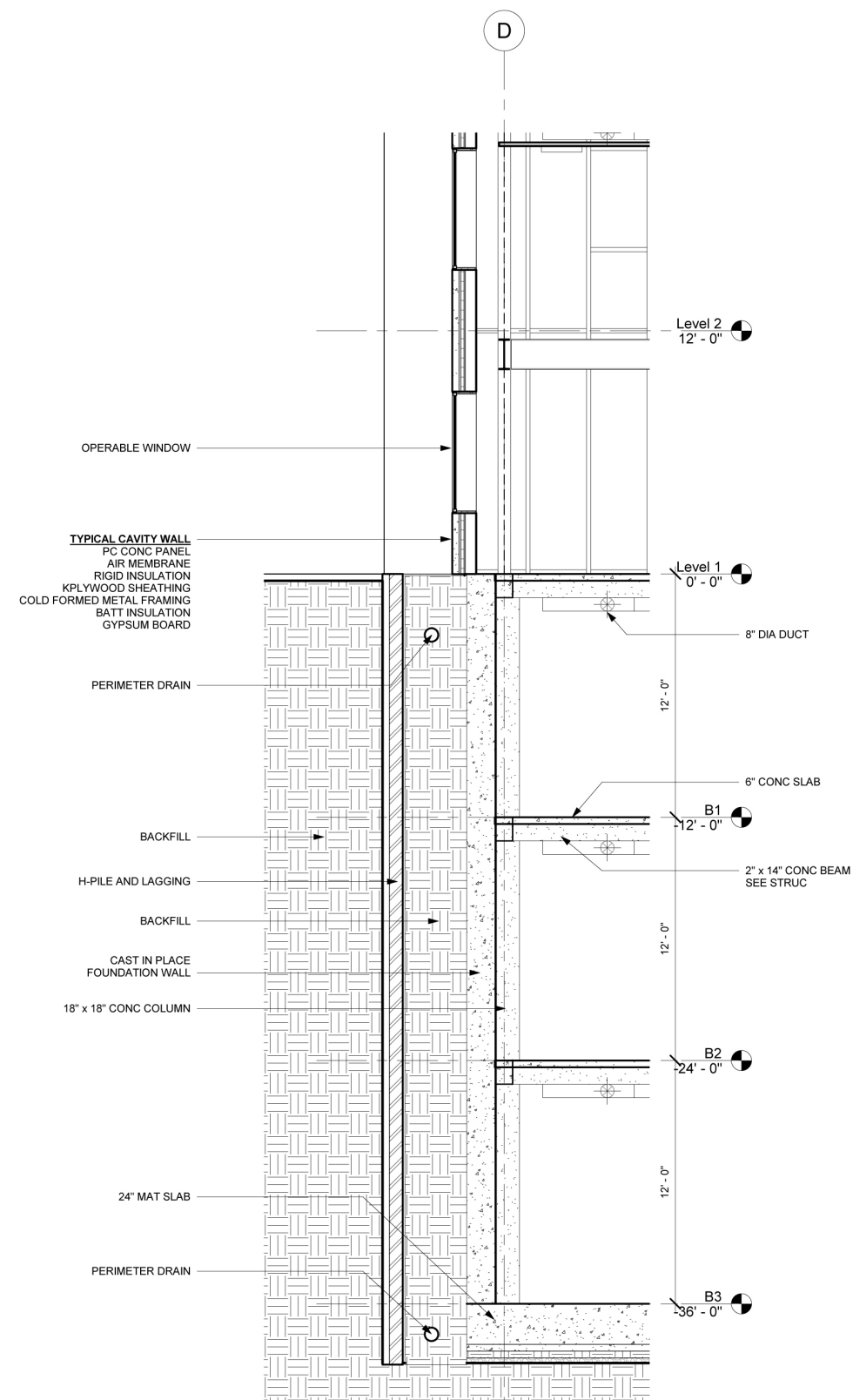


STUDIO APARTMENT
FULL CONSTRUCTION
NEW YORK, NY

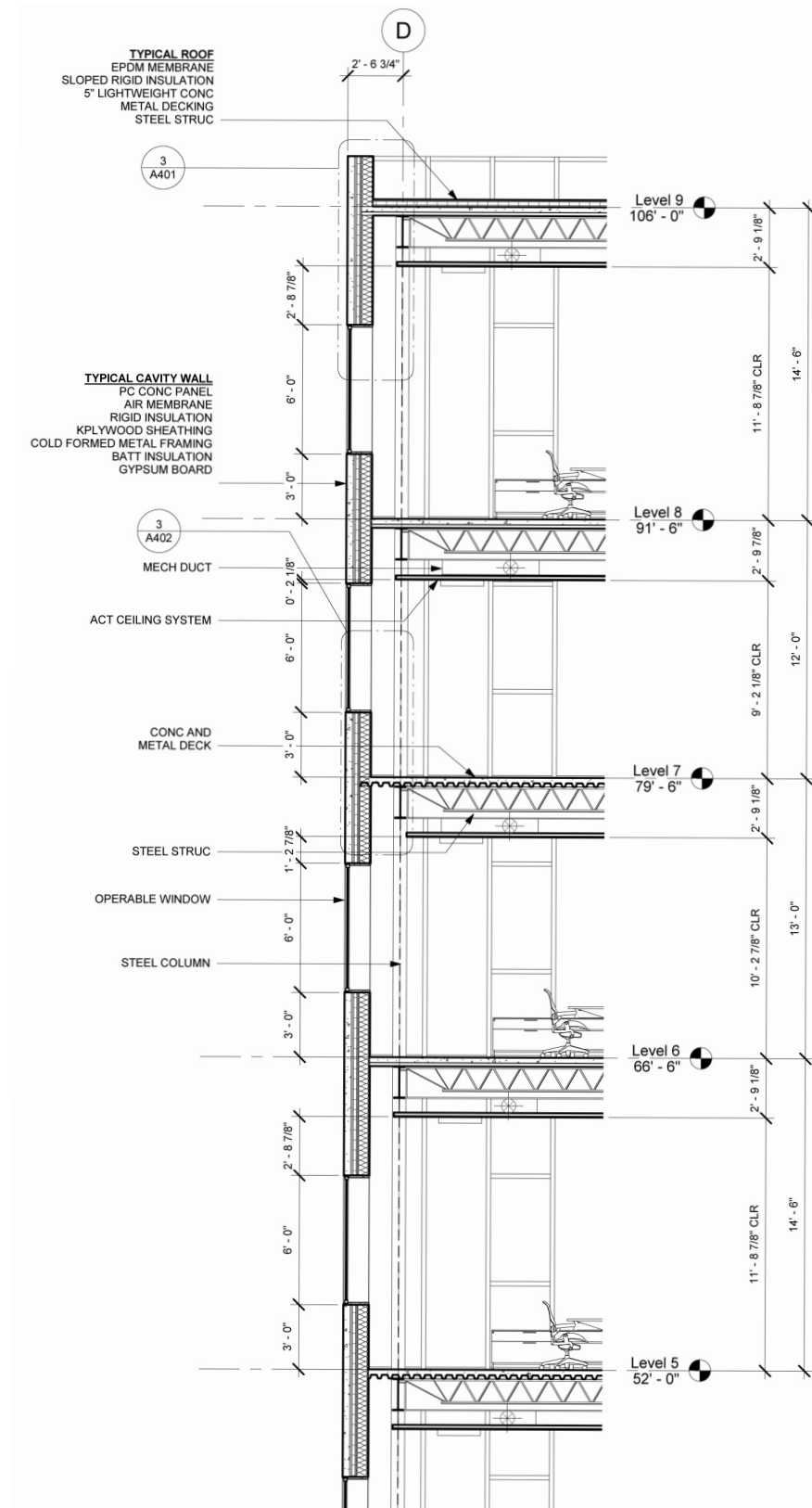


DOWNTOWN OFFICE
BIM MODELING
PHILADELPHIA, PA

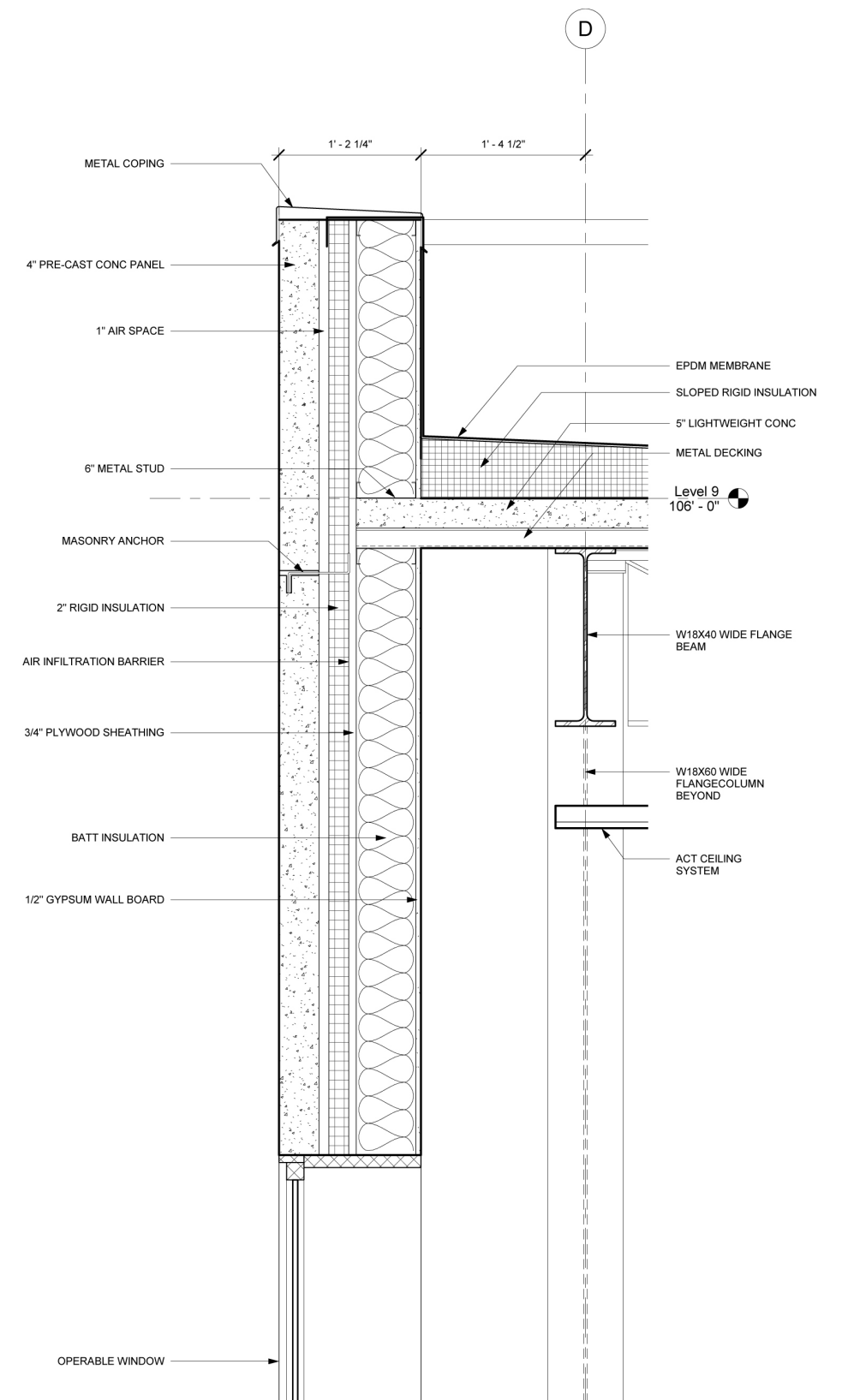




DRAWING WALL SECTION AT FOUNDATION

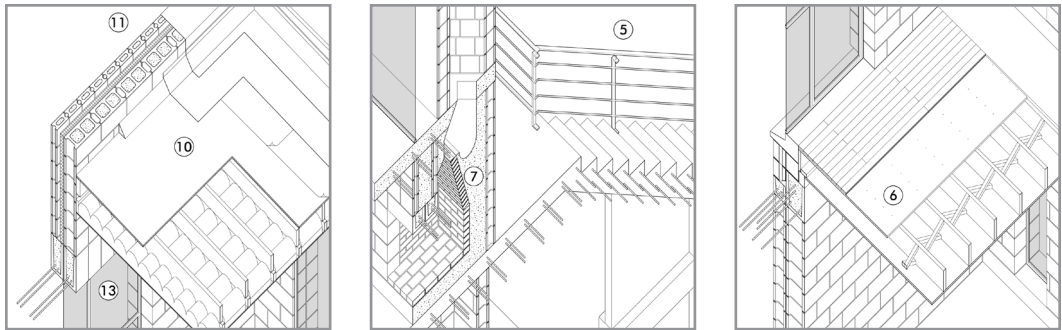


DRAWING WALL SECTION AT STRUCTURAL EDGE



DRAWING SECTION DETAIL AT STRUCTURAL EDGE

CROFFEAD HOUSE
CLARK & MANEFEE ARCHITECTS
CHARLESTON, SC



1. Foundation slab for Perimeter Wall

9"x13"x18" Site-Cast Concrete Slab with 18 #6 reinforcement bars short, 10 #6 reinforcement bars long.

2. External Wall below Grade

8"x12"x16" CMU inner wythe with 3 #5 vertical reinforcement per corner. 1 #5 vertical reinforcement bar 48" o.c.

3. Ground Floor

4" compact Sand fill
Vapor Barrier
4" Site-Cast Concrete on grade, 6"x6" wire mesh reinforcement.

4. Exterior Wall above grade

8"x12"x16" CMU inner wythe, 3 #5 vertical reinforcement bars per corner. 1 #5 vertical reinforcement bar 48" o.c.
Damp-roofing
Vapor Barrier
2" Rigid Insulation
2" Air Cavity
8"x8"x4" CMU
Transparent waterproof coating.

5. Stairs

51"x60"x12" Site-Cast Concrete Footing with 6 #5 reinforcement bars short by 6 #5 reinforcement bars long.
Site-Cast Concrete stairs with 10 inch treads, 7.5" risers with 17 #5 reinforcement bars following the shape of the steps and 6 #5 reinforcement bars running length of stairs
8" Thick hearth/entry slab of Site-Cast Concrete with 10 #5 reinforcement bars parallel to exterior wall 12" o.c., 1 #5 reinforcement bar running parallel to exterior edge, 8 #5 reinforcement bars 12" o.c. running perpendicular to exterior wall on either side of the fireplace.

6. First Level Floor

¾" Gypsum Board Ceiling.
2"x10" Joists 16" o.c. with Bridging at Mid-span.
¾" Plywood Sheathing sub-floor aligned East-to-West.
2"x0.5" Finished Floor Boards.

7. Fireplace

8"x8"x16" CMU pier inner Wythe on all side of the chimney with 2 #5 vertical reinforcement bars and 9 gauge wires ties 16" o.c. vertically
8" thick Site-Cast Concrete slab
3"x4.5"x9" Firebrick running on floor and sides of interior fireplace
Site-Caste Concrete framed between firebrick and outer Wythe
2 course 8"x8" CMU bond beam with 2 #5 reinforcement bars extending 8" on end
8" thick Site-Cast concrete with 4 #5 reinforcement bars extending 12" o.c. Parallel to wall
5 #5 reinforcement bars perpendicular to wall at 12" o.c.

4 #5 reinforcement bars running perpendicular to wall on either side of chimney
2 #5 reinforcement bars running parallel to wall on either side of the chimney, all reinforcement top and bottom
8"x8"x16" CMU outer Wythe with 3 #5 vertical reinforcement bars at corners in fully grouted cells

8. Chimney

8"x8"x8" CMU blocks altering courses with 2 #5 vertical reinforcement on each corner in fully grouted cells
½" air space
Flue lining
8" mortar cap
3" thick mortar chimney cap with ½" metal top plate

9. Interior Wall

2 Wythe of 8"x8"x16" CMU altering courses with 3 #5 vertical reinforcement bars at each corner and masonry openings in fully grouted cells and 1 #5 vertical reinforcement
2 Wythe 8"x8"x16" lintel with 2 #5 horizontal reinforcement bars fully grouted cells extending out 8" on each end.

10. House Roof

¾" Gypsum Board Ceiling
2"x4" Rafter 16" o.c.
2/8" Rafter 16" o.c. with 5" of continuous Batt insulation
5/8" Plywood decking
Roof membrane
Built-up roof in 36" wide rolls laid out North-to-South with a 3" overlap

11. Parapet/Exterior Wall

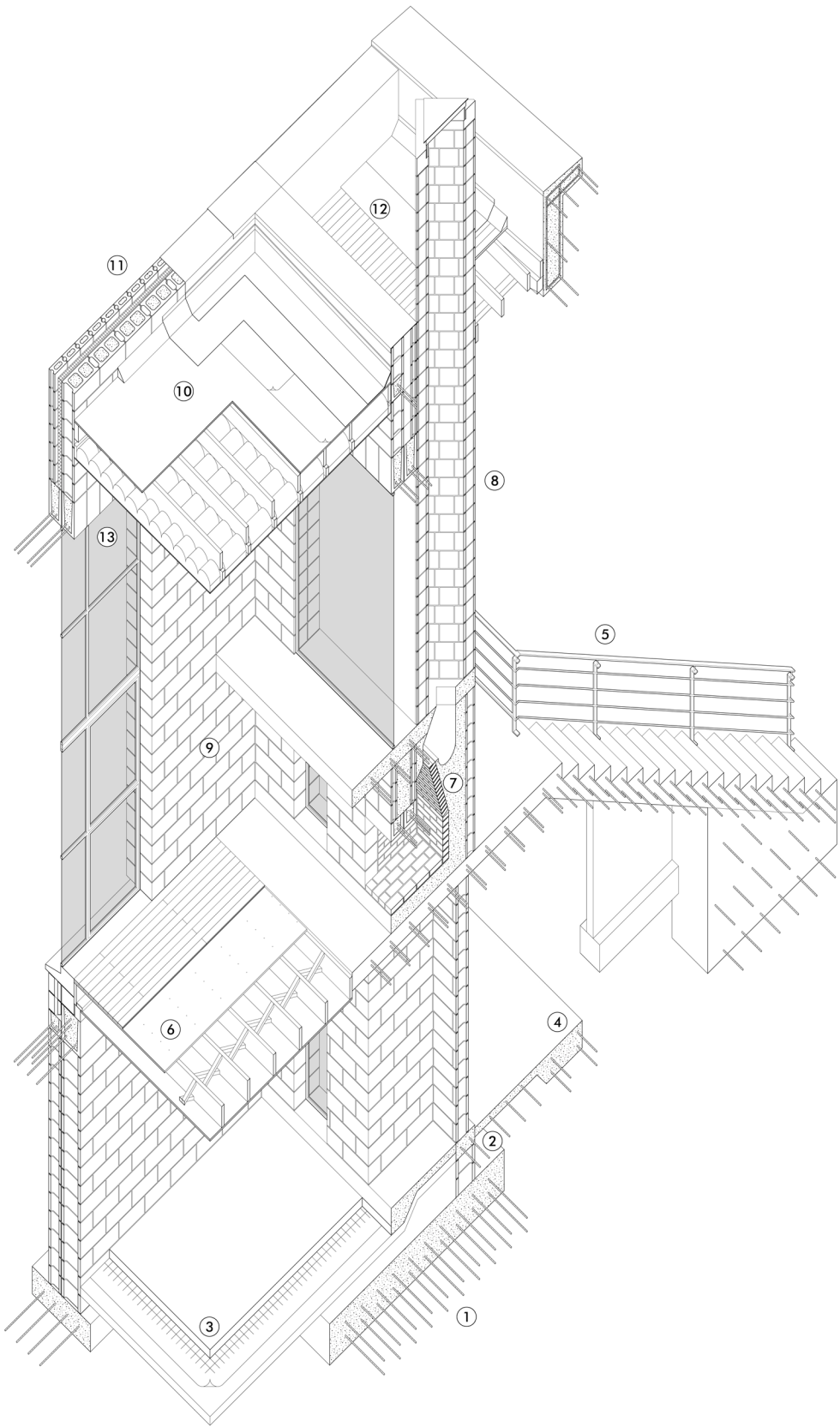
8"x8"x16" CMU inner Wythe with 3 #5 vertical reinforcement bars at corners and 1 #5 Reinforcement bar at 48" o.c.
2" rigid insulation
2" air cavity
8"x8"x4" CMU outer Wythe with. Horizontal reinforcement at 16" o.c.
Transparent waterproof coating
Parapet Cap Flashing
Metal Snap-on with blind joints, secure to both walls.

12. Stair/landing Roof

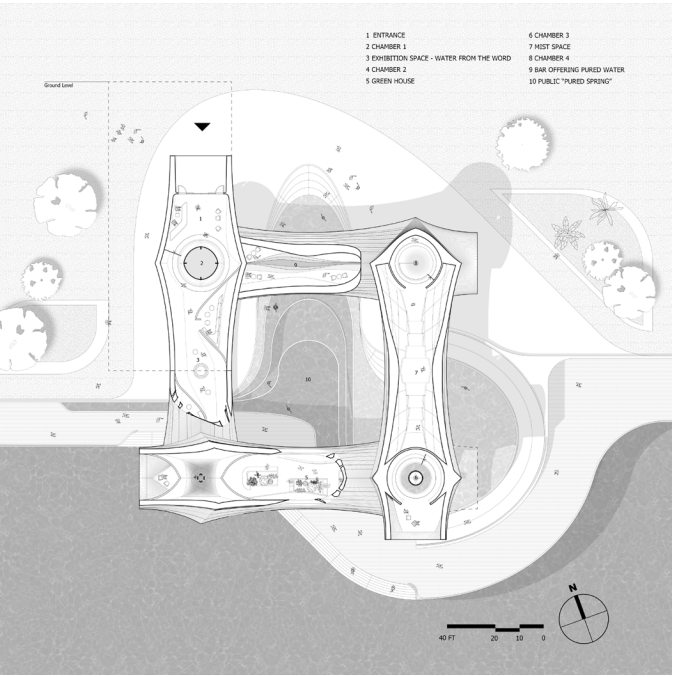
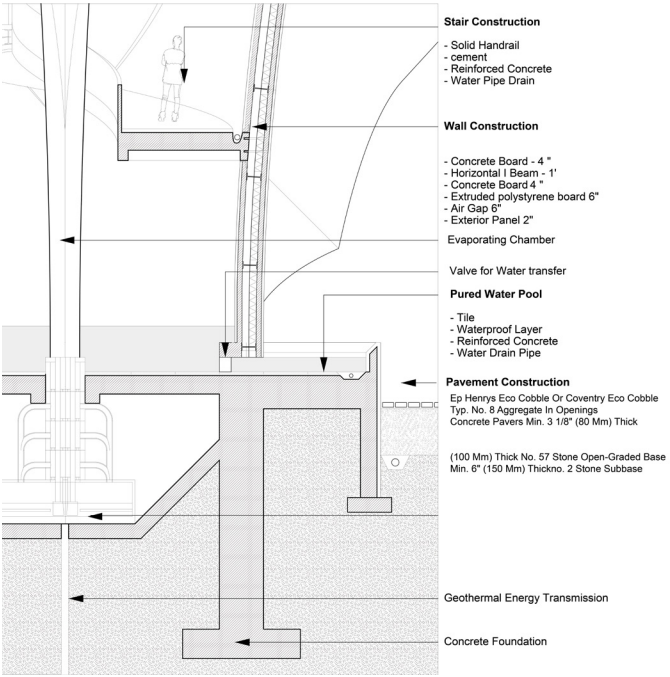
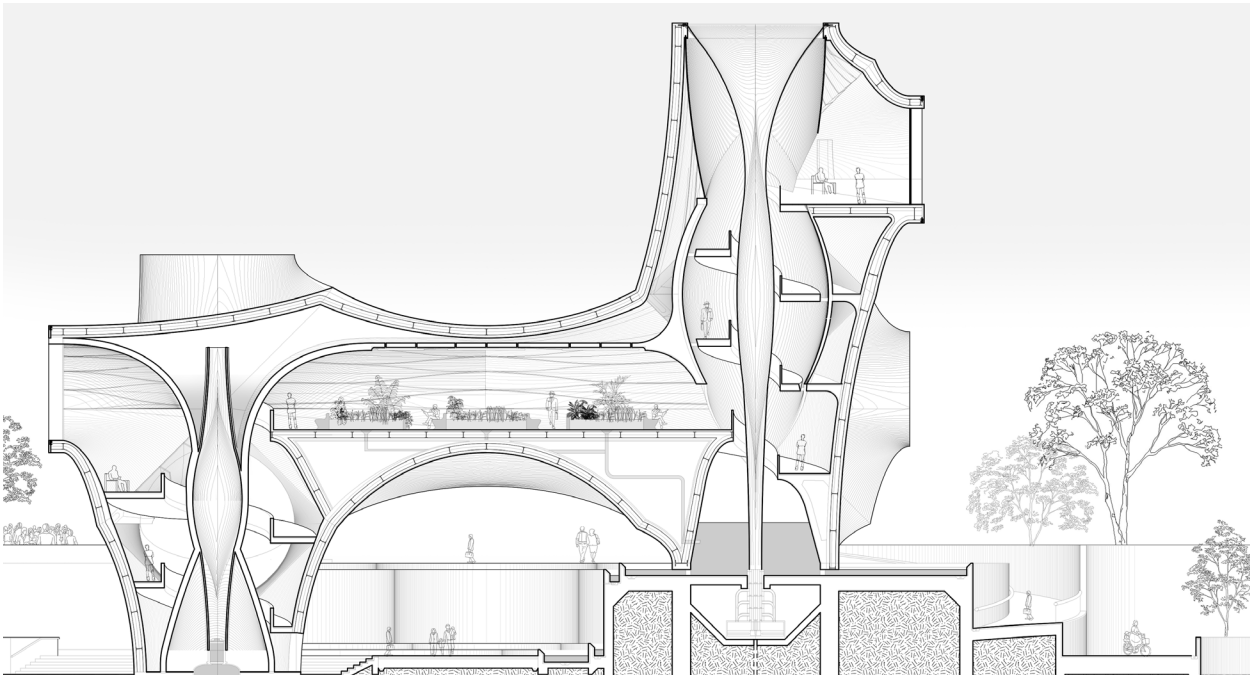
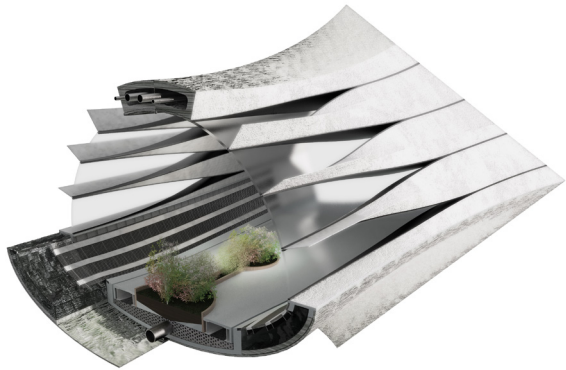
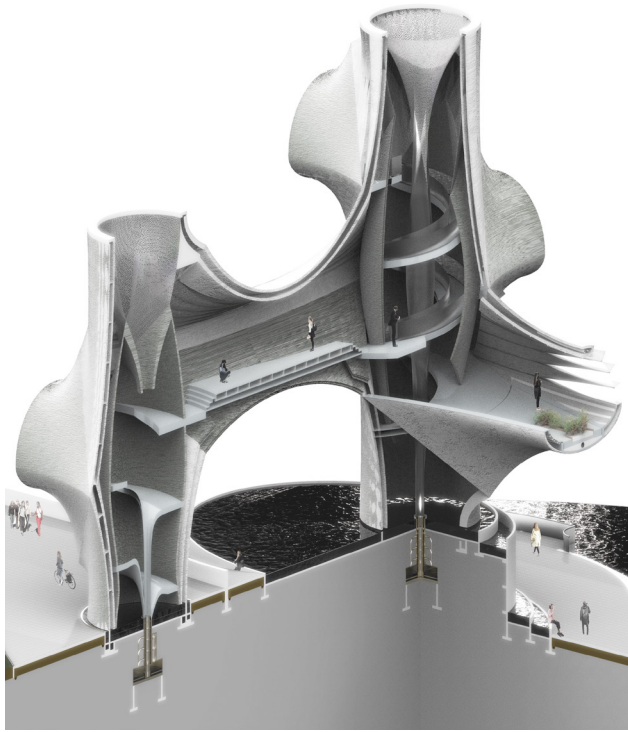
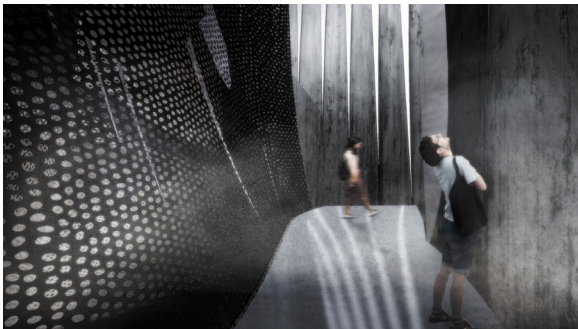
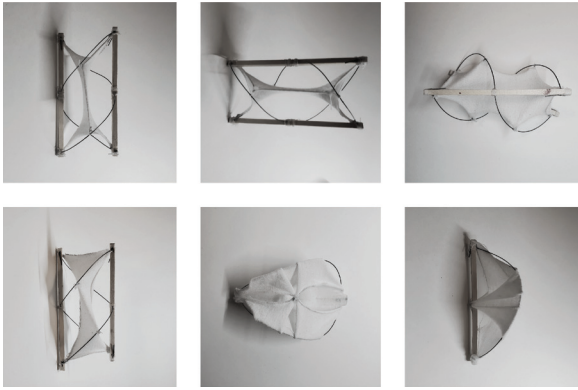
2"x8" rafters at 16" o.c.
5/8" plywood decking
Built-up roof, 36" wide rolls.

13. Window

Aluminum Still Lintel
2 Courses of 16"x8"x8" CMU bond beam lintel with 2 #5 reinforcement bars grouted in solid
Steel Framed double glazed window.



WATER CHAMBER
2025 WORLD EXPO "FUTURE SOCIETY OF OUR LIVES"
OSAKA, JAPAN
PARTNER: LINGSEN KONG



STUDY VAPOR STUDY (TOP) | SECTION (BOTTOM)

STUDY RENDER (TOP) | VAPOR EXPERIENCE (MID) | DETAIL & PLAN (BOTTOM)

UNTOLD STORY | HOMBIH CAH
TINY LIBRARY 2021
ULAANBAATAR, MONGOLIA
PARTNER: TONY DIEP, JEONGSU HAN

