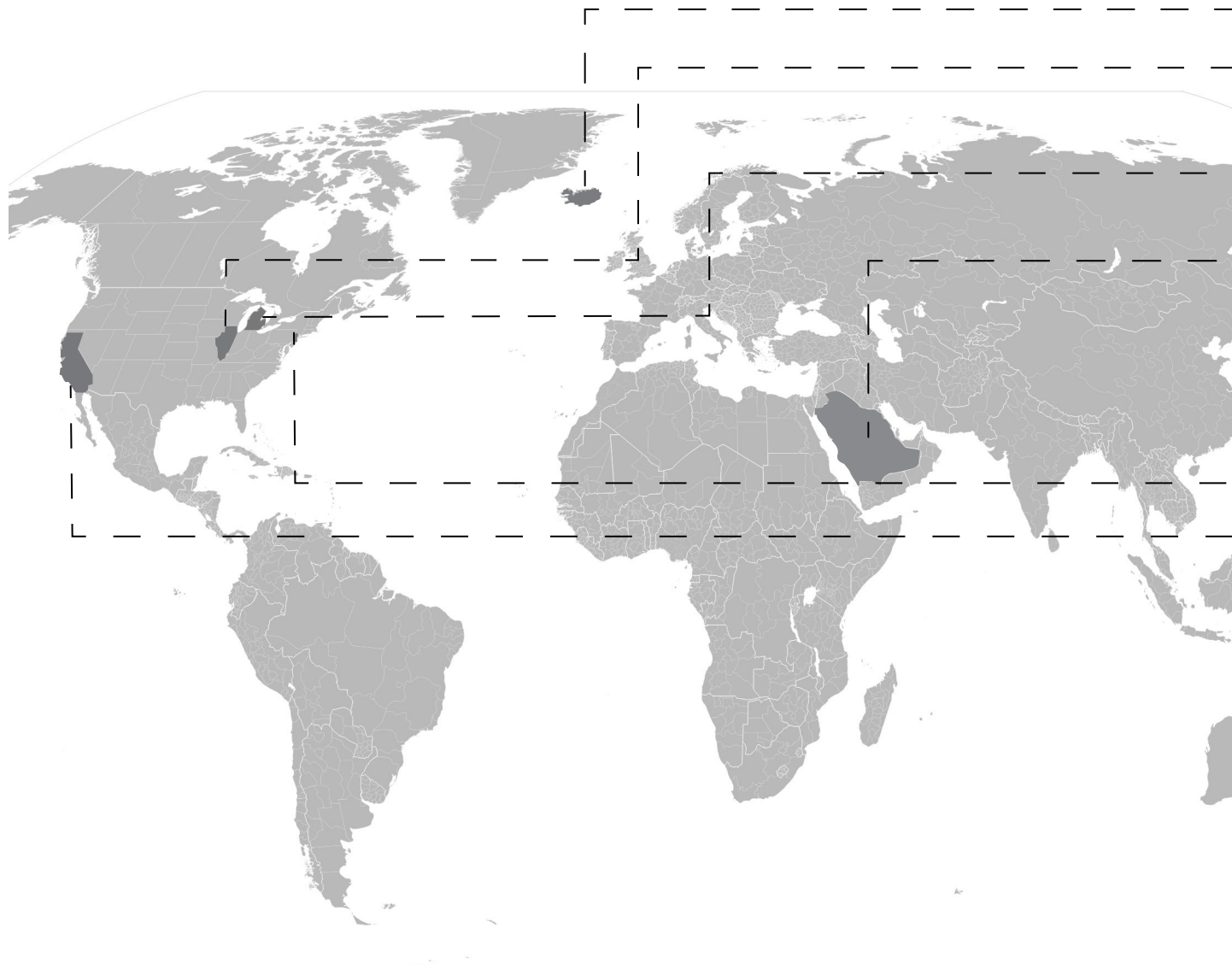


ARCHITECTURE/INTERIOR ARCHITECTURE
PORTFOLIO

HADEEL ALHAMED

SELECTED WORK

SELECTED WORK





— — — — — ● Cast boutique for Suri Recht

— — — — — ● CARTER RESIDENCE
HISTORIC PRESERVATION COMMISSION
Lake Forest, IL

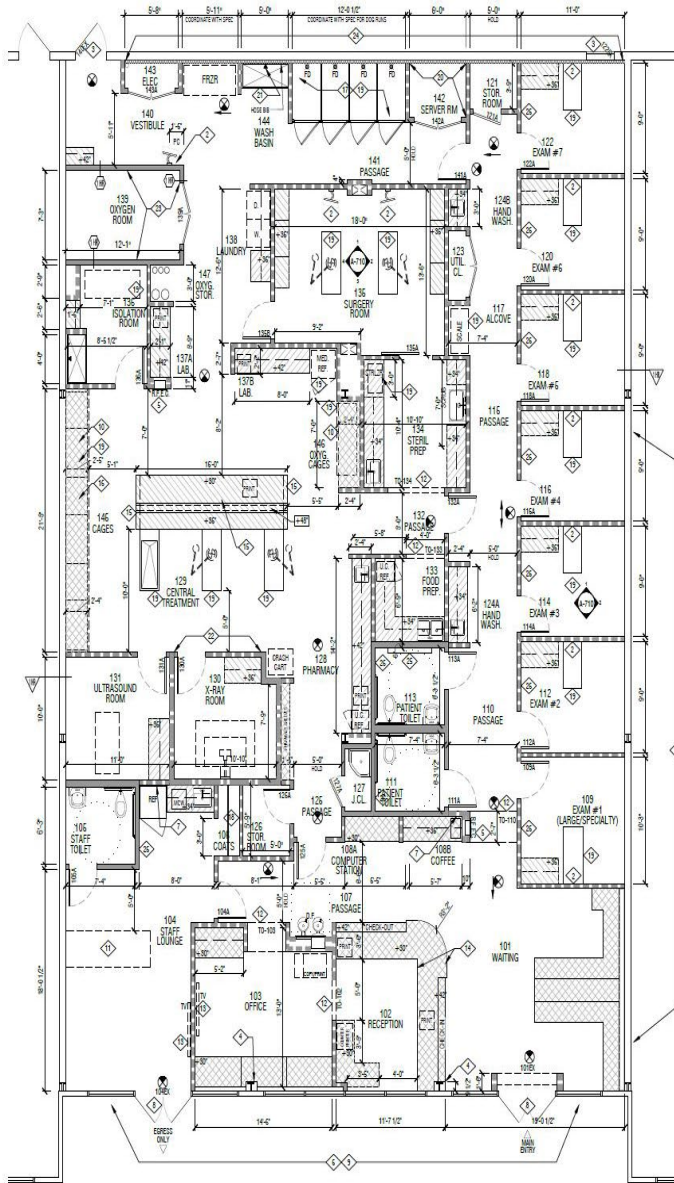
— — — — — ● PRIVATE RESIDENTIAL PROJECT
SUPRENANT RESIDENCE
Glenn, Michigan

— — — — — ● Residential Project
Riyadh, Saudi Arabia

— — — — — ● Getty Image Gallery

— — — — — ● New York
VETERINARY EMERGENCY CARE

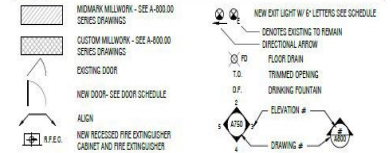
— — — — — ● MARINE AVE
FAMILY RESIDENTIAL HOUSE



CONSTRUCTION GENERAL NOTES:

1. ALL DIMENSIONS ARE FINISH TO FINISH. ALL DIMENSIONS ARE TO BE FIELD VERIFIED. REPORT ANY DISCREPANCIES TO ARCHITECT PRIOR TO PROCEEDING WITH CONSTRUCTION.
2. LOCATE DOOR FRAME 4 INCHES FROM FINISHED WALL TO DAYLIGHT UNLESS SHOWN OTHERWISE.
3. PROVIDE TRIMMED CUTOUTS ABOVE G.L.G. FOR RETURN AIR AT ALL SPACES WHERE PARTITION IS FULL HEIGHT TO SLAB ABOVE. COORDINATE WITH H.V.A.C. FOR SIZES & LOCATIONS.
4. ALL EXISTING ORIGINAL REMAINING TO BE PROTECTED. TAPE & SPACKLE TO MATCH NEW (TYP. FOR ALL).
5. WHERE NEW ITEMS, SUCH AS RECEPTILES, FIRE EXTINGUISHER CABINETS, ETC. ARE SHOWN TO BE BUILT INTO EXISTING CONSTRUCTION - G.F. PATCHES AND REBUILD AS REQUIRED.
6. GENERAL CONTRACTOR TO REPLACE OR REPAIR ANY EXISTING CONSTRUCTION DAMAGED BY NEW MECHANICAL, PLUMBING, SPRINKLER AND ELECTRICAL WORK.
7. REPAIR EXISTING OR INSTALL NEW PREPROTECTING SYSTEMS AS REQUIRED BY SCOPE OF WORK AND CODE. (WHERE APPLICABLE)
8. GENERAL CONTRACTOR TO CHECK ALL THE PARTITION LINES FOR ARCHITECT APPROVAL. PRIOR TO STARTING CONSTRUCTION.
9. MAINTAIN AND/OR RESTORE THE FIRE RATING AT ALL AREAS DESIGNATED FOR SUCH APPLICATION DUE TO DAMAGE FROM SCOPE OF DEMOLITION OR CONSTRUCTION.
10. GENERAL CONTRACTOR TO PROVIDE PROPER PROTECTION OF ALL EXISTING TO REMAIN ITEMS DURING ALL PHASES OF CONSTRUCTION.
11. IN AREA OF WORK FIRE-STOP ALL FIRE RATED ASSEMBLIES AS REQUIRED TO MEET CODE. APPLICABLE TO FLOORS / WALLS / CEILING.
12. WHERE PIPES, DUCTS, CONDUIT ETC. HAVE BEEN REMOVED, FILL ALL HOLES IN SLAB WITH MINIMUM 4" THICK REINFORCED CONCRETE.
13. ALL EXISTING PERMETER ALUMINUM WINDOW FRAMES SHALL BE CLEANED, POLISHED AND RESTORED. GLASS SHALL BE CLEANED ON THE INSIDE AND OUTSIDE.
14. ENTIRE FLOOR AREA TO RECEIVE GEMMONTON UNDERLAYMENT. INSTALL IN ACCORDANCE WITH PROJECT SPECIFICATIONS SECTION 033000 AND MANUFACTURER'S INSTRUCTIONS. SEE KEY PLAN A-200.
15. THE PROJECT MANUAL - G IS INCLUDED AS PART OF THE WORK OF THIS PROJECT.

LEGEND:



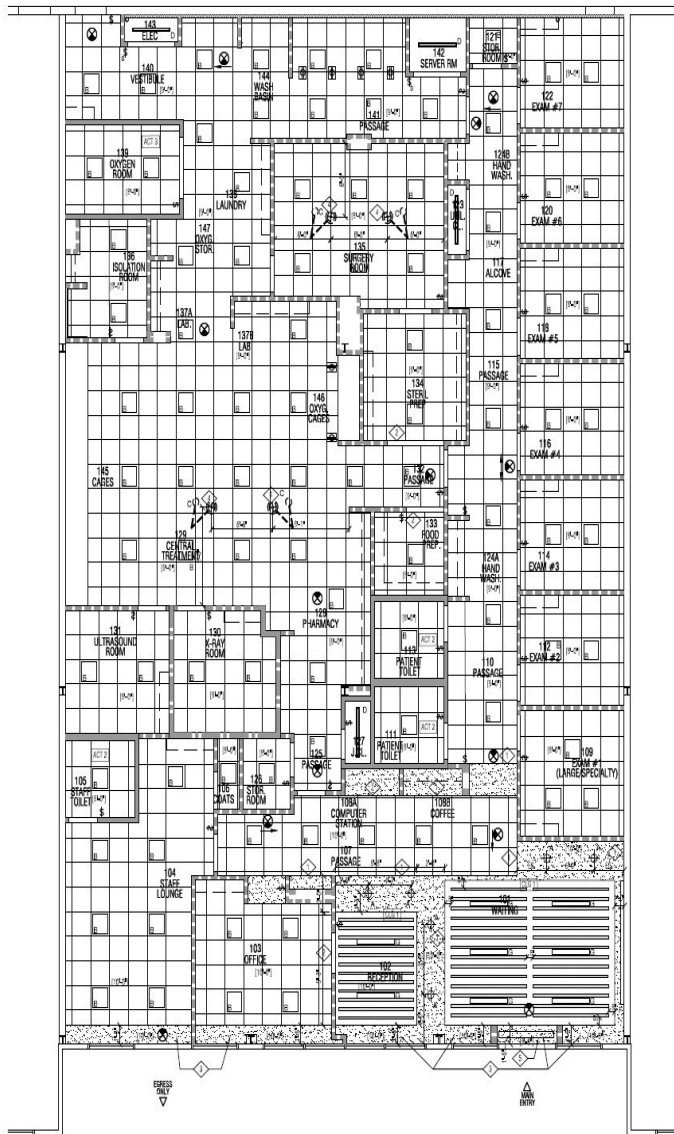
CONSTRUCTION PLAN REFERENCE NOTES:

1. GO TO VERIFY AND PROVIDE PROTECTING AT ALL NEW AND EXISTING FIRE-RATED ASSEMBLIES WITHIN THE AREA OF WORK. REPORT ANY EXISTING DEFICIENCIES PRIOR TO START OF CONSTRUCTION.
2. FINISH AND INSTALL SOLID WOOD BLOCKING FOR WALL MOUNTED G.C. ARM AND EXAM FOLDING TABLES. COORDINATE WITH FC ARM SPECIFICATION, COMPUTER ARM AND FOLDING TABLE BY OTHERS. INSTALLATION BY G.C.
3. EXISTING DOORS & FRAME. REPAINT FRAME & INSTALL NEW HARMWARE. SEE DOOR SCHEDULE.
4. BOX OUT ALL EXISTING COLLINGPIPES AS SHOWN WITH 1-1/2" METAL STUDS AND GYPSUM BOARD UP TO 6" ABOVE FINISHED CEILING. SEE DETAIL 7A-160.00.
5. NEW RECYCLED FIRE EXTINGUISHER CABINET AND 10LB A80 FIRE EXTINGUISHER. SEE DETAIL 9A-160.00.
6. GO TO CLEAN AND POLISH ALL TOP AND BOTTOM WINDOW FRAMES AFTER CONSTRUCTION IS COMPLETE. BEFORE REPAIRING THE SPACE BACK TO CLIENT.
7. PROVIDE WATERLINE FOR REFRIGERATOR ICE-MAKER AND COFFEE MAKER. COORDINATE WITH PLUMBING DRAWINGS.
8. EXISTING DOORS TO RECEIVE NEW HARMWARE. SEE DOOR SCHEDULE.
9. EXISTING STOREFRONT TO RECEIVE 3M CRYSTAL OPAQUE FILM UP TO 6 FEET HIGH.
10. UPPER CABINETS ABOVE CAGES. SEE MILLWORK ELEVATIONS.
11. NEW LOCKERS, PROVIDED BY FURNITURE VENDOR. INSTALLED BY G.C.
12. NEW TRIMMED OPENING. SEE DETAIL 2A-160.00. SEE A-140 FOR SIZE.
13. FINISH AND INSTALL SOLID WOOD BLOCKING FOR TV. COORDINATE WITH TV SPECIFICATION. TV AND INSTALLATION BY OTHERS. BUSSEYING BY G.C.
14. NEW SOFFIT AND FACIA. SEE DETAIL 9A-160.00.
15. NEW LOW WALLS. SEE WALL TYPES J & K/A-150.00. AND MONARK CASEWORK ELEVATIONS SECTION.
16. INSTALL 4" CONCRETE PLATFORM AT LOCATION OF CAGES. SEE DETAIL 6A-160.00.
17. SLOPED CONCRETE PLATFORM WITH DRAINAGE FOR DOG RUNS. SEE DETAIL 6A-160.00.
18. CLOTHES PILE & PLAM. SHELF.
19. SEE DRAWING A-701.00 FOR MEDICAL EQUIPMENT SCHEDULE AND PLAN FOR LOCATION, PROVIDER AND INSTALLER COORDINATION.
20. PLYWOOD BACKPLANE - FINISH AND INSTALL 2" x 4" 3/4" FIRE RETARDANT PLYWOOD SHEETS. 4" G. GRADE MOUNTED ON 24" STAND-OFFS. COVER ENTIRE WALL. (1) COAT OF SHEVIN WILLIAMS BAKING WALNUT AND WOOD PRIMER + (1) COAT OF PLAME CONTROL 10-10 INTUMESCENT FIRE RETARDANT PAINT. FINISH WITH CONTROL 43-43 FIRE RETARDANT PAINT.
21. INSTALL NEW HUBER&B ABOVE NEW PET BATHING SINK. COORDINATE WITH SINK SPECIFICATIONS.
22. LEAD LINED DOORWAY/GYPSUM BOARD. SEE PHYSICIST REPORT.
23. INSTALL TWO (2) LAYERS OF D.F. 80. ON THE INSIDE FACE AND FILL WALL WITH SOUND ATTENUATION INSULATION.
24. NEW PURRED OUT WALL. SEE 0410.
25. NEW BABY CHANGING STATION, FRAME WALL AND PROVIDE BLOCKING AS REQUIRED.
26. IN-WALL RECYCLED TRASH BIN, FRAME WALL AND PROVIDE BLOCKING AS REQUIRED.

FIRST FLOOR CONSTRUCTION PART PLAN
SCALE: 3/16" = 1'-0"



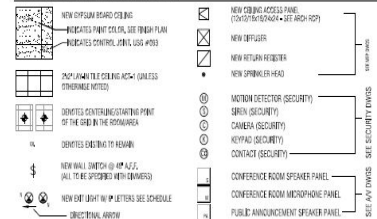
New York
VETERINARY EMERGENCY CARE



REFLECTED CEILING GENERAL NOTES:

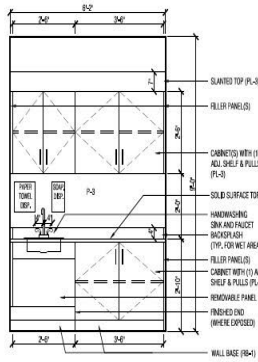
1. NEW/EXISTING CEILING SHALL BE REFLECTED PER TO ALL DETAILS, PROVIDE SHOP DRAWING ALL PROPOSED DOWNING, INCLUDING DEETS AND ELEVATIONS FOR COORDINATION WITH FINISHED CEILING ELEVATION.
2. GENERAL CONTRACTORS SHALL REFER TO THE PLAN FOR LAYOUT OF CEILING, LOCALS AND TO THE ENGINEERING DRAWINGS FOR COORDINATION WITH ANY LOCALS BETWEEN ENGINEERS, AND ARCHITECTS DRAWINGS PER TO FINISH LAYOUT.
3. UNLESS OTHERWISE NOTED, ALL DIMENSIONS FOR SERVICES SEE STRUCTURAL DRAWINGS.
4. GENERAL AND ELECTRICAL CONTRACTORS SHALL CHECK ALL CEILING HEIGHTS AND PLUMBING CONDITIONS FOR PROPER CLEARANCE OF EXIST WORK, PLUMBING & STRUCTURAL LINES, EXISTING AND OTHER CEILING EQUIPMENT TO FINISH FINISHED CEILING HEIGHT TO ALL SPECIFIED HEIGHT AND COORDINATE TO THE ARCHITECT.
5. PROVIDE ALL DETAILS INCLUDING TRIM, OUT DETAIL, ETC., COLORS TO BE APPROVED BY ARCHITECT.
6. GENERAL CONTRACTOR TO INSTALL ALL CEILING GRID AND LIGHTING RECEPTS IN STRICT COMPLIANCE WITH MANUFACTURERS INSTRUCTIONS AND SPECIFICATIONS AS WELL AS LOCAL, STATE AND FEDERAL BUILDING CODES.
7. THE CEILING SUPPORT STRUCTURE SHALL BE FULLY COMPLIANT WITH NEW AND EXISTING LOCALS.
8. CENTER ALL NEW RECESSIBLE COMPONENTS ON CEILING TILE GRIDS UNLESS OTHERWISE NOTED.

REFLECTED CEILING PLAN LEGEND:

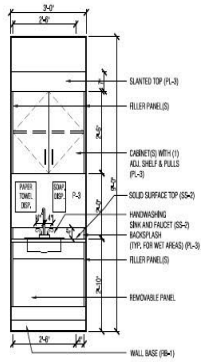


ACOUSTIC TILE SCHEDULE:

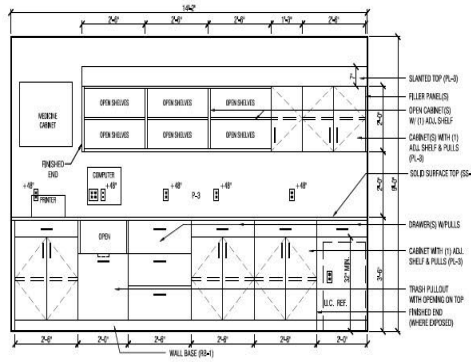
ACT-1	ACT-2	NOTE:
GENERAL NOTE - ALL 1. MINIMUM 1/4" THICK 2. 12" X 12" X 1/2" 3. 1/2" X 1/2" X 1/2" 4. 1/2" X 1/2" X 1/2" 5. 1/2" X 1/2" X 1/2" 6. 1/2" X 1/2" X 1/2" 7. 1/2" X 1/2" X 1/2" 8. 1/2" X 1/2" X 1/2" 9. 1/2" X 1/2" X 1/2" 10. 1/2" X 1/2" X 1/2" 11. 1/2" X 1/2" X 1/2" 12. 1/2" X 1/2" X 1/2" 13. 1/2" X 1/2" X 1/2" 14. 1/2" X 1/2" X 1/2" 15. 1/2" X 1/2" X 1/2" 16. 1/2" X 1/2" X 1/2" 17. 1/2" X 1/2" X 1/2" 18. 1/2" X 1/2" X 1/2" 19. 1/2" X 1/2" X 1/2" 20. 1/2" X 1/2" X 1/2" 21. 1/2" X 1/2" X 1/2" 22. 1/2" X 1/2" X 1/2" 23. 1/2" X 1/2" X 1/2" 24. 1/2" X 1/2" X 1/2" 25. 1/2" X 1/2" X 1/2" 26. 1/2" X 1/2" X 1/2" 27. 1/2" X 1/2" X 1/2" 28. 1/2" X 1/2" X 1/2" 29. 1/2" X 1/2" X 1/2" 30. 1/2" X 1/2" X 1/2" 31. 1/2" X 1/2" X 1/2" 32. 1/2" X 1/2" X 1/2" 33. 1/2" X 1/2" X 1/2" 34. 1/2" X 1/2" X 1/2" 35. 1/2" X 1/2" X 1/2" 36. 1/2" X 1/2" X 1/2" 37. 1/2" X 1/2" X 1/2" 38. 1/2" X 1/2" X 1/2" 39. 1/2" X 1/2" X 1/2" 40. 1/2" X 1/2" X 1/2" 41. 1/2" X 1/2" X 1/2" 42. 1/2" X 1/2" X 1/2" 43. 1/2" X 1/2" X 1/2" 44. 1/2" X 1/2" X 1/2" 45. 1/2" X 1/2" X 1/2" 46. 1/2" X 1/2" X 1/2" 47. 1/2" X 1/2" X 1/2" 48. 1/2" X 1/2" X 1/2" 49. 1/2" X 1/2" X 1/2" 50. 1/2" X 1/2" X 1/2" 51. 1/2" X 1/2" X 1/2" 52. 1/2" X 1/2" X 1/2" 53. 1/2" X 1/2" X 1/2" 54. 1/2" X 1/2" X 1/2" 55. 1/2" X 1/2" X 1/2" 56. 1/2" X 1/2" X 1/2" 57. 1/2" X 1/2" X 1/2" 58. 1/2" X 1/2" X 1/2" 59. 1/2" X 1/2" X 1/2" 60. 1/2" X 1/2" X 1/2" 61. 1/2" X 1/2" X 1/2" 62. 1/2" X 1/2" X 1/2" 63. 1/2" X 1/2" X 1/2" 64. 1/2" X 1/2" X 1/2" 65. 1/2" X 1/2" X 1/2" 66. 1/2" X 1/2" X 1/2" 67. 1/2" X 1/2" X 1/2" 68. 1/2" X 1/2" X 1/2" 69. 1/2" X 1/2" X 1/2" 70. 1/2" X 1/2" X 1/2" 71. 1/2" X 1/2" X 1/2" 72. 1/2" X 1/2" X 1/2" 73. 1/2" X 1/2" X 1/2" 74. 1/2" X 1/2" X 1/2" 75. 1/2" X 1/2" X 1/2" 76. 1/2" X 1/2" X 1/2" 77. 1/2" X 1/2" X 1/2" 78. 1/2" X 1/2" X 1/2" 79. 1/2" X 1/2" X 1/2" 80. 1/2" X 1/2" X 1/2" 81. 1/2" X 1/2" X 1/2" 82. 1/2" X 1/2" X 1/2" 83. 1/2" X 1/2" X 1/2" 84. 1/2" X 1/2" X 1/2" 85. 1/2" X 1/2" X 1/2" 86. 1/2" X 1/2" X 1/2" 87. 1/2" X 1/2" X 1/2" 88. 1/2" X 1/2" X 1/2" 89. 1/2" X 1/2" X 1/2" 90. 1/2" X 1/2" X 1/2" 91. 1/2" X 1/2" X 1/2" 92. 1/2" X 1/2" X 1/2" 93. 1/2" X 1/2" X 1/2" 94. 1/2" X 1/2" X 1/2" 95. 1/2" X 1/2" X 1/2" 96. 1/2" X 1/2" X 1/2" 97. 1/2" X 1/2" X 1/2" 98. 1/2" X 1/2" X 1/2" 99. 1/2" X 1/2" X 1/2" 100. 1/2" X 1/2" X 1/2" 101. 1/2" X 1/2" X 1/2" 102. 1/2" X 1/2" X 1/2" 103. 1/2" X 1/2" X 1/2" 104. 1/2" X 1/2" X 1/2" 105. 1/2" X 1/2" X 1/2" 106. 1/2" X 1/2" X 1/2" 107. 1/2" X 1/2" X 1/2" 108. 1/2" X 1/2" X 1/2" 109. 1/2" X 1/2" X 1/2" 110. 1/2" X 1/2" X 1/2" 111. 1/2" X 1/2" X 1/2" 112. 1/2" X 1/2" X 1/2" 113. 1/2" X 1/2" X 1/2" 114. 1/2" X 1/2" X 1/2" 115. 1/2" X 1/2" X 1/2" 116. 1/2" X 1/2" X 1/2" 117. 1/2" X 1/2" X 1/2" 118. 1/2" X 1/2" X 1/2" 119. 1/2" X 1/2" X 1/2" 120. 1/2" X 1/2" X 1/2" 121. 1/2" X 1/2" X 1/2" 122. 1/2" X 1/2" X 1/2" 123. 1/2" X 1/2" X 1/2" 124. 1/2" X 1/2" X 1/2" 125. 1/2" X 1/2" X 1/2" 126. 1/2" X 1/2" X 1/2" 127. 1/2" X 1/2" X 1/2" 128. 1/2" X 1/2" X 1/2" 129. 1/2" X 1/2" X 1/2" 130. 1/2" X 1/2" X 1/2" 131. 1/2" X 1/2" X 1/2" 132. 1/2" X 1/2" X 1/2" 133. 1/2" X 1/2" X 1/2" 134. 1/2" X 1/2" X 1/2" 135. 1/2" X 1/2" X 1/2" 136. 1/2" X 1/2" X 1/2" 137. 1/2" X 1/2" X 1/2" 138. 1/2" X 1/2" X 1/2" 139. 1/2" X 1/2" X 1/2" 140. 1/2" X 1/2" X 1/2" 141. 1/2" X 1/2" X 1/2" 142. 1/2" X 1/2" X 1/2" 143. 1/2" X 1/2" X 1/2" 144. 1/2" X 1/2" X 1/2" 145. 1/2" X 1/2" X 1/2" 146. 1/2" X 1/2" X 1/2" 147. 1/2" X 1/2" X 1/2" 148. 1/2" X 1/2" X 1/2" 149. 1/2" X 1/2" X 1/2" 150. 1/2" X 1/2" X 1/2" 151. 1/2" X 1/2" X 1/2" 152. 1/2" X 1/2" X 1/2" 153. 1/2" X 1/2" X 1/2" 154. 1/2" X 1/2" X 1/2" 155. 1/2" X 1/2" X 1/2" 156. 1/2" X 1/2" X 1/2" 157. 1/2" X 1/2" X 1/2" 158. 1/2" X 1/2" X 1/2" 159. 1/2" X 1/2" X 1/2" 160. 1/2" X 1/2" X 1/2" 161. 1/2" X 1/2" X 1/2" 162. 1/2" X 1/2" X 1/2" 163. 1/2" X 1/2" X 1/2" 164. 1/2" X 1/2" X 1/2" 165. 1/2" X 1/2" X 1/2" 166. 1/2" X 1/2" X 1/2" 167. 1/2" X 1/2" X 1/2" 168. 1/2" X 1/2" X 1/2" 169. 1/2" X 1/2" X 1/2" 170. 1/2" X 1/2" X 1/2" 171. 1/2" X 1/2" X 1/2" 172. 1/2" X 1/2" X 1/2" 173. 1/2" X 1/2" X 1/2" 174. 1/2" X 1/2" X 1/2" 175. 1/2" X 1/2" X 1/2" 176. 1/2" X 1/2" X 1/2" 177. 1/2" X 1/2" X 1/2" 178. 1/2" X 1/2" X 1/2" 179. 1/2" X 1/2" X 1/2" 180. 1/2" X 1/2" X 1/2" 181. 1/2" X 1/2" X 1/2" 182. 1/2" X 1/2" X 1/2" 183. 1/2" X 1/2" X 1/2" 184. 1/2" X 1/2" X 1/2" 185. 1/2" X 1/2" X 1/2" 186. 1/2" X 1/2" X 1/2" 187. 1/2" X 1/2" X 1/2" 188. 1/2" X 1/2" X 1/2" 189. 1/2" X 1/2" X 1/2" 190. 1/2" X 1/2" X 1/2" 191. 1/2" X 1/2" X 1/2" 192. 1/2" X 1/2" X 1/2" 193. 1/2" X 1/2" X 1/2" 194. 1/2" X 1/2" X 1/2" 195. 1/2" X 1/2" X 1/2" 196. 1/2" X 1/2" X 1/2" 197. 1/2" X 1/2" X 1/2" 198. 1/2" X 1/2" X 1/2" 199. 1/2" X 1/2" X 1/2" 200. 1/2" X 1/2" X 1/2" 201. 1/2" X 1/2" X 1/2" 202. 1/2" X 1/2" X 1/2" 203. 1/2" X 1/2" X 1/2" 204. 1/2" X 1/2" X 1/2" 205. 1/2" X 1/2" X 1/2" 206. 1/2" X 1/2" X 1/2" 207. 1/2" X 1/2" X 1/2" 208. 1/2" X 1/2" X 1/2" 209. 1/2" X 1/2" X 1/2" 210. 1/2" X 1/2" X 1/2" 211. 1/2" X 1/2" X 1/2" 212. 1/2" X 1/2" X 1/2" 213. 1/2" X 1/2" X 1/2" 214. 1/2" X 1/2" X 1/2" 215. 1/2" X 1/2" X 1/2" 216. 1/2" X 1/2" X 1/2" 217. 1/2" X 1/2" X 1/2" 218. 1/2" X 1/2" X 1/2" 219. 1/2" X 1/2" X 1/2" 220. 1/2" X 1/2" X 1/2" 221. 1/2" X 1/2" X 1/2" 222. 1/2" X 1/2" X 1/2" 223. 1/2" X 1/2" X 1/2" 224. 1/2" X 1/2" X 1/2" 225. 1/2" X 1/2" X 1/2" 226. 1/2" X 1/2" X 1/2" 227. 1/2" X 1/2" X 1/2" 228. 1/2" X 1/2" X 1/2" 229. 1/2" X 1/2" X 1/2" 230. 1/2" X 1/2" X 1/2" 231. 1/2" X 1/2" X 1/2" 232. 1/2" X 1/2" X 1/2" 233. 1/2" X 1/2" X 1/2" 234. 1/2" X 1/2" X 1/2" 235. 1/2" X 1/2" X 1/2" 236. 1/2" X 1/2" X 1/2" 237. 1/2" X 1/2" X 1/2" 238. 1/2" X 1/2" X 1/2" 239. 1/2" X 1/2" X 1/2" 240. 1/2" X 1/2" X 1/2" 241. 1/2" X 1/2" X 1/2" 242. 1/2" X 1/2" X 1/2" 243. 1/2" X 1/2" X 1/2" 244. 1/2" X 1/2" X 1/2" 245. 1/2" X 1/2" X 1/2" 246. 1/2" X 1/2" X 1/2" 247. 1/2" X 1/2" X 1/2" 248. 1/2" X 1/2" X 1/2" 249. 1/2" X 1/2" X 1/2" 250. 1/2" X 1/2" X 1/2" 251. 1/2" X 1/2" X 1/2" 252. 1/2" X 1/2" X 1/2" 253. 1/2" X 1/2" X 1/2" 254. 1/2" X 1/2" X 1/2" 255. 1/2" X 1/2" X 1/2" 256. 1/2" X 1/2" X 1/2" 257. 1/2" X 1/2" X 1/2" 258. 1/2" X 1/2" X 1/2" 259. 1/2" X 1/2" X 1/2" 260. 1/2" X 1/2" X 1/2" 261. 1/2" X 1/2" X 1/2" 262. 1/2" X 1/2" X 1/2" 263. 1/2" X 1/2" X 1/2" 264. 1/2" X 1/2" X 1/2" 265. 1/2" X 1/2" X 1/2" 266. 1/2" X 1/2" X 1/2" 267. 1/2" X 1/2" X 1/2" 268. 1/2" X 1/2" X 1/2" 269. 1/2" X 1/2" X 1/2" 270. 1/2" X 1/2" X 1/2" 271. 1/2" X 1/2" X 1/2" 272. 1/2" X 1/2" X 1/2" 273. 1/2" X 1/2" X 1/2" 274. 1/2" X 1/2" X 1/2" 275. 1/2" X 1/2" X 1/2" 276. 1/2" X 1/2" X 1/2" 277. 1/2" X 1/2" X 1/2" 278. 1/2" X 1/2" X 1/2" 279. 1/2" X 1/2" X 1/2" 280. 1/2" X 1/2" X 1/2" 281. 1/2" X 1/2" X 1/2" 282. 1/2" X 1/2" X 1/2" 283. 1/2" X 1/2" X 1/2" 284. 1/2" X 1/2" X 1/2" 285. 1/2" X 1/2" X 1/2" 286. 1/2" X 1/2" X 1/2" 287. 1/2" X 1/2" X 1/2" 288. 1/2" X 1/2" X 1/2" 289. 1/2" X 1/2" X 1/2" 290. 1/2" X 1/2" X 1/2" 291. 1/2" X 1/2" X 1/2" 292. 1/2" X 1/2" X 1/2" 293. 1/2" X 1/2" X 1/2" 294. 1/2" X 1/2" X 1/2" 295. 1/2" X 1/2" X 1/2" 296. 1/2" X 1/2" X 1/2" 297. 1/2" X 1/2" X 1/2" 298. 1/2" X 1/2" X 1/2" 299. 1/2" X 1/2" X 1/2" 300. 1/2" X 1/2" X 1/2" 301. 1/2" X 1/2" X 1/2" 302. 1/2" X 1/2" X 1/2" 303. 1/2" X 1/2" X 1/2" 304. 1/2" X 1/2" X 1/2" 305. 1/2" X 1/2" X 1/2" 306. 1/2" X 1/2" X 1/2" 307. 1/2" X 1/2" X 1/2" 308. 1/2" X 1/2" X 1/2" 309. 1/2" X 1/2" X 1/2" 310. 1/2" X 1/2" X 1/2" 311. 1/2" X 1/2" X 1/2" 312. 1/2" X 1/2" X 1/2" 313. 1/2" X 1/2" X 1/2" 314. 1/2" X 1/2" X 1/2" 315. 1/2" X 1/2" X 1/2" 316. 1/2" X 1/2" X 1/2" 317. 1/2" X 1/2" X 1/2" 318. 1/2" X 1/2" X 1/2" 319. 1/2" X 1/2" X 1/2" 320. 1/2" X 1/2" X 1/2" 321. 1/2" X 1/2" X 1/2" 322. 1/2" X 1/2" X 1/2" 323. 1/2" X 1/2" X 1/2" 324. 1/2" X 1/2" X 1/2" 325. 1/2" X 1/2" X 1/2" 326. 1/2" X 1/2" X 1/2" 327. 1/2" X 1/2" X 1/2" 328. 1/2" X 1/2" X 1/2" 329. 1/2" X 1/2" X 1/2" 330. 1/2" X 1/2" X 1/2" 331. 1/2" X 1/2" X 1/2" 332. 1/2" X 1/2" X 1/2" 333. 1/2" X 1/2" X 1/2" 334. 1/2" X 1/2" X 1/2" 335. 1/2" X 1/2" X 1/2" 336. 1/2" X 1/2" X 1/2" 337. 1/2" X 1/2" X 1/2" 338. 1/2" X 1/2" X 1/2" 339. 1/2" X 1/2" X 1/2" 340. 1/2" X 1/2" X 1/2" 341. 1/2" X 1/2" X 1/2" 342. 1/2" X 1/2" X 1/2" 343. 1/2" X 1/2" X 1/2" 344. 1/2" X 1/2" X 1/2" 345. 1/2" X 1/2" X 1/2" 346. 1/2" X 1/2" X 1/2" 347. 1/2" X 1/2" X 1/2" 348. 1/2" X 1/2" X 1/2" 349. 1/2" X 1/2" X 1/2" 350. 1/2" X 1/2" X 1/2" 351. 1/2" X 1/2" X 1/2" 352. 1/2" X 1/2" X 1/2" 353. 1/2" X 1/2" X 1/2" 354. 1/2" X 1/2" X 1/2" 355. 1/2" X 1/2" X 1/2" 356. 1/2" X 1/2" X 1/2" 357. 1/2" X 1/2" X 1/2" 3		



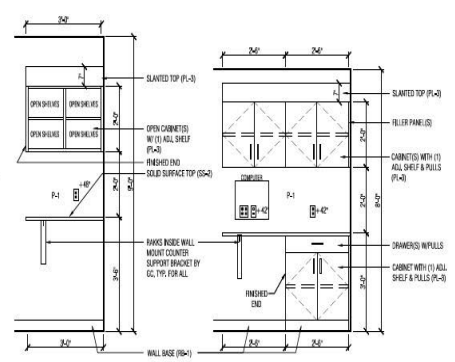
1 HANDWASH 124A
1/2" = 1'-0"



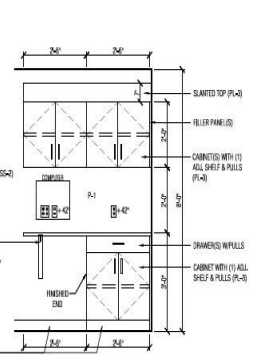
2 HANDWASH 124B
1/2" = 1'-0"



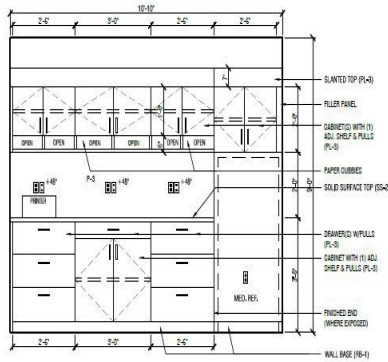
3 PHARMACY - 128
1/2" = 1'-0"



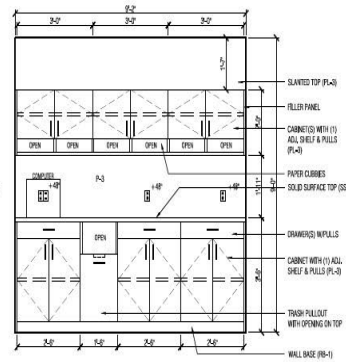
4 VESTIBULE - 140
1/2" = 1'-0"



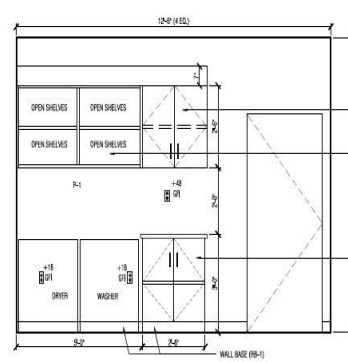
5 ULTRASOUND ROOM - 131
1/2" = 1'-0"



6 LAB - 7B
1/2" = 1'-0"

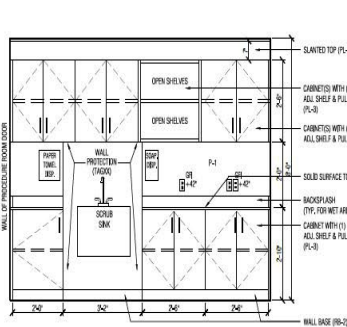


7 LAB - 137A
1/2" = 1'-0"

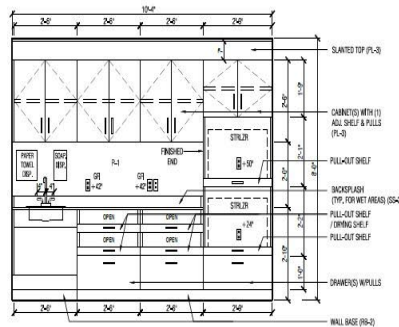


8 LAUNDRY - 138
1/2" = 1'-0"

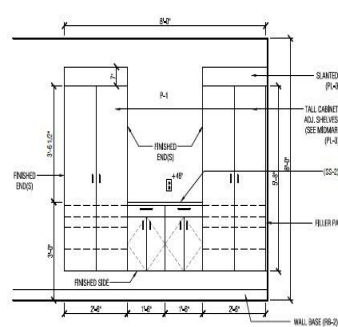
ALL MIDMARK CABINETS & CORIAN
COUNTERS O.P.C.I. (OWNER PROVIDED -
CONTRACTOR INSTALLED)



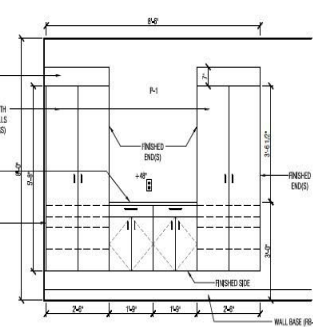
9 STERIL PREP - 134
1/2" = 1'-0"



10 STERIL PREP - 134
1/2" = 1'-0"



11 SURGERY ROOM (SOUTH) - 135
1/2" = 1'-0"



12 SURGERY ROOM (NORTH) - 135
1/2" = 1'-0"

TOILET ACCESSORIES SCHEDULE					
TAG ID	DESCRIPTION	MANUFACTURER	MODEL	FURNISHED BY	INSTALLED BY
T-0	RECESSED BABY CHANGING STATION	KOHLER KARE	KES10-SSFE	CONTRACTOR	CONTRACTOR
T-1	WALL SURFACE MOUNTED SOAP DISPENSER	---	---	CONTRACTOR	CONTRACTOR
T-2	WALL SURFACE MOUNTED MIRROR (24" x 36")	BOBRICK	B-2924-031	CONTRACTOR	CONTRACTOR
T-3	WALL MOUNTED CRAB BAR - 3" (PROMBE BLOCKING FOR MOUNTING)	BOBRICK	B-889038	CONTRACTOR	CONTRACTOR
T-4	WALL MOUNTED CRAB BAR - 4" (PROMBE BLOCKING FOR MOUNTING)	BOBRICK	B-889042	CONTRACTOR	CONTRACTOR
T-5	WALL MOUNTED CRAB BAR - 1" (PROMBE BLOCKING FOR MOUNTING)	BOBRICK	B-889036	CONTRACTOR	CONTRACTOR
T-6	WALL SURFACE MOUNTED TOILET TISSUE DISPENSER	GEORGIA PACIFIC	VERT. COMPACT 240LL MODEL	CONTRACTOR	CONTRACTOR
T-7	ROBE HOOK (ON REAR OF ALL DOORS)	KOHLER	K-14333-001	CONTRACTOR	CONTRACTOR
T-8	WALL SURFACE MOUNTED PAPER TOWEL DISPENSER	GEORGIA PACIFIC	59423A	CONTRACTOR	CONTRACTOR
T-9	WALL SURFACE MOUNTED TOILET SEAT COVER DISPENSER	BOBRICK	B-4021	CONTRACTOR	CONTRACTOR

GENERAL NOTES:

1. ALL SINKS WITH EXPOSED PIPES TO RECEIVE TRUBRO LAUVARD 2 #133 WHITE.
2. PROMBE SOLID WOOD 2x4 BLOCKING IN WALLS FOR MOUNTING ALL TOILET FIXTURES AND ACCESSORIES
3. SEE TOILET SCHEDULE AND PLANS FOR DIMENSIONS WITHIN EACH TOILET TYPE.
4. FLOOR AND WALL CEILING TILE TO BE CENTERED IN THE ROOM AS SHOWN IN PLAN AND ELEVATIONS.
5. ALL PAINT IN THE TOILETS IS SEMI-GLOSS.

REFERENCE NOTES:

- ◆ INSTALL SCHEDULE 40, 1/2" DIA. PER BASE OF THE S.
- ◆ 1/2" DIA. SCHEDULE 40, 1/2" DIA. PER BASE OF THE S.

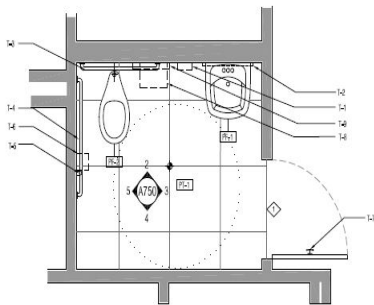
PLUMBING FIXTURE SCHEDULE:

DESCRIPTION					
PI-#	LOCATION	TYPE	MANUFACTURER	MODEL	
PI-1	TOILET	LAVATORY	AMERICAN STANDARD	0561011C - CENTER HOLE ONLY WITH OVERFLOW	WHITE, 1-1/2" TWP WITH ACRYLIC SPURD, 0562200C
		FAUCET	AMERICAN STANDARD	0521104	WITH 05201010 THERMOSTATIC MIXING VALVE
		LAV. CARRIER	WADE	S20	
PI-2	TOILET	WATER CLOSET	AMERICAN STANDARD	3043201 - ELONGATED BOWL, TOP SPUD	WHITE, AMERICAN STANDARD 5001-100 HEAVY DUTY SEAT
		FLUSHOMOVER	S/DAN	0111-1-26	
PI-3	JANITORS CLOSET	UTILITY SINK	KOHLER	WHERI - SERVICE SINK ENAMELED CAST IRON	KOHLER 147110
		FAUCET	T&S BRASS AND BRONZE WORKS, INC.	B-6005-507P	1" WALL MOUNT FAUCET

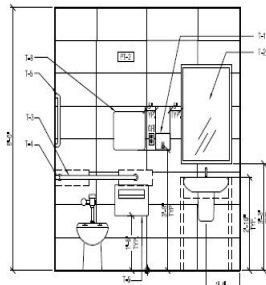
- NOTES:**
 1. ALL SINKS WITH EXPOSED PIPES TO RECEIVE TRUBRO LAUVARD #133 WHITE.
 2. GC TO COORDINATE LOCATION OF SINKS WITH MILL WORK ELEVATIONS ON 4-210 DRAWINGS.

ADDITIONAL ACCESSORIES SCHEDULE FOR GC TO PRICE AND OWNER TO SELECT FROM

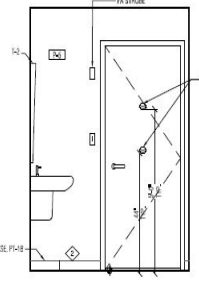
TAG ID	DESCRIPTION	MANUFACTURER	MODEL	FURNISHED BY	INSTALLED BY
T-10	AUTOMATIC WALL SURFACE MOUNTED SOAP DISPENSERS	BOBRICK	B-2013	CONTRACTOR	CONTRACTOR
T-11	SOAP DISPENSER	BRADLEY	6A00	CONTRACTOR	CONTRACTOR
T-12	RECESSED WASTE RECEPTACLE FOR 4" WALL	BOBRICK	B-3844	CONTRACTOR	CONTRACTOR
T-13	AUTOMATIC ROLL PAPER TOWEL DISPENSER	BOBRICK	B-72074	CONTRACTOR	CONTRACTOR
T-14	SEMI-RECESSED AUTOMATIC, UNIVERSAL ROLL PAPER TOWEL DISPENSER	BOBRICK	B-28744	CONTRACTOR	CONTRACTOR
T-15	CONTINUOUSLY RECESSED WASTE RECEPTACLE WITH LINERMATE	BOBRICK	B-13644	CONTRACTOR	CONTRACTOR



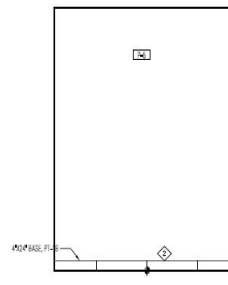
1 TOILET - 111
1/2" = 1'-0"



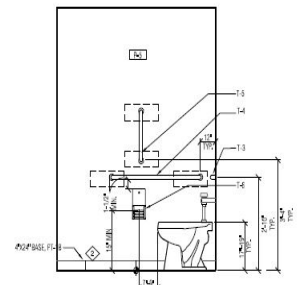
2 TOILET
1/2" = 1'-0"



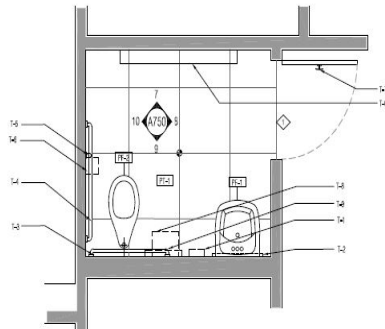
3 TOILET
1/2" = 1'-0"



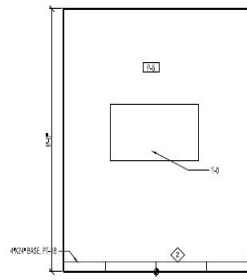
4 TOILET
1/2" = 1'-0"



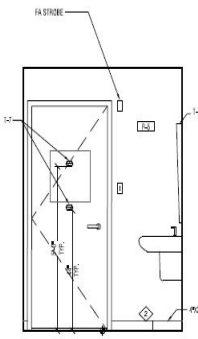
5 TOILET
1/2" = 1'-0"



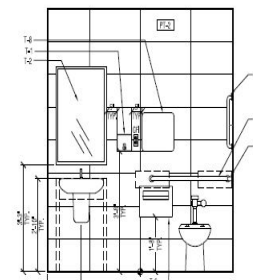
6 TOILET TYPE B - 113
1/2" = 1'-0"



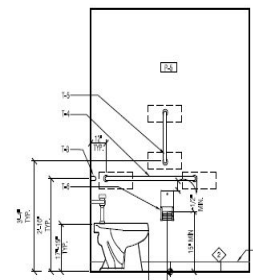
7 TOILET
1/2" = 1'-0"



8 TOILET
1/2" = 1'-0"



9 TOILET
1/2" = 1'-0"



10 TOILET
1/2" = 1'-0"





SUPRENANT RESIDENCE

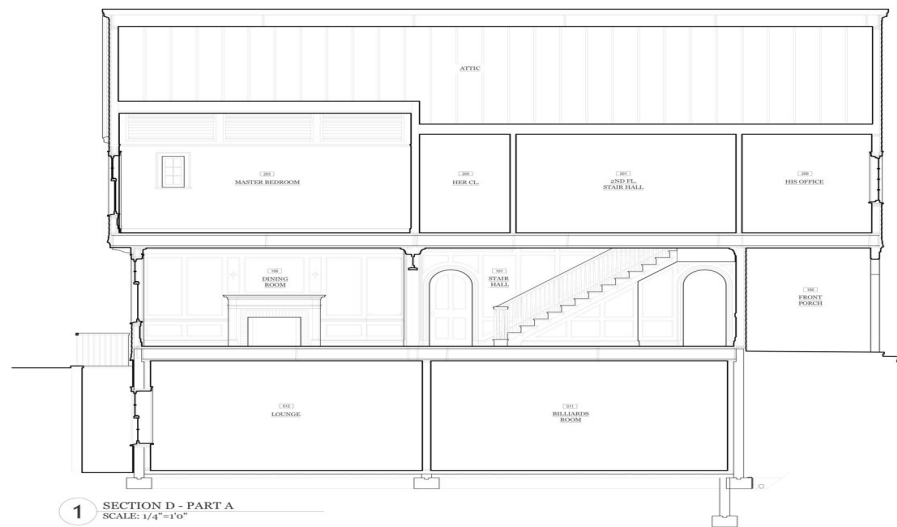
1485 71 St.

Fennville, Michigan



1 SECTION A
SCALE: 1/4"=1'-0"

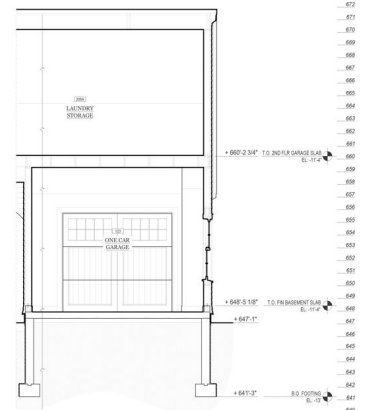
SECTION B



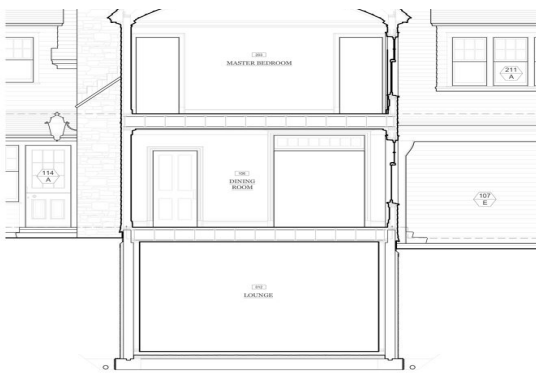
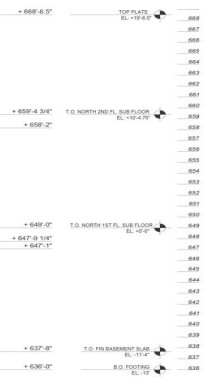
1 SECTION D - PART A
SCALE: 1/4"=1'-0"



SECTION C - PART A
SCALE: 1/4"=1'-0"



2 SECTION C - PART B
SCALE: 1/4"=1'-0"



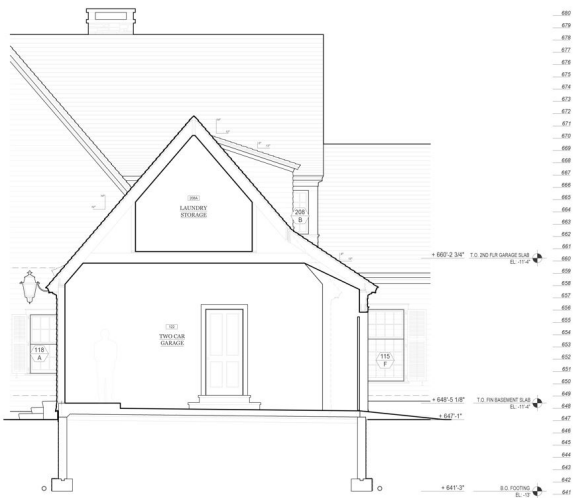
2 SECTION E - PART B
SCALE: 1/4"=1'-0"



1 SECTION F
SCALE: 1/4"=1'-0"



2 SECTION G
SCALE: 1/4"=1'-0"



1 SECTION H
SCALE: 1/4"=1'-0"



2 SECTION I
SCALE: 1/4"=1'-0"

CARTER RESIDENCE

HISTORIC PRESERVATION COMMISSION

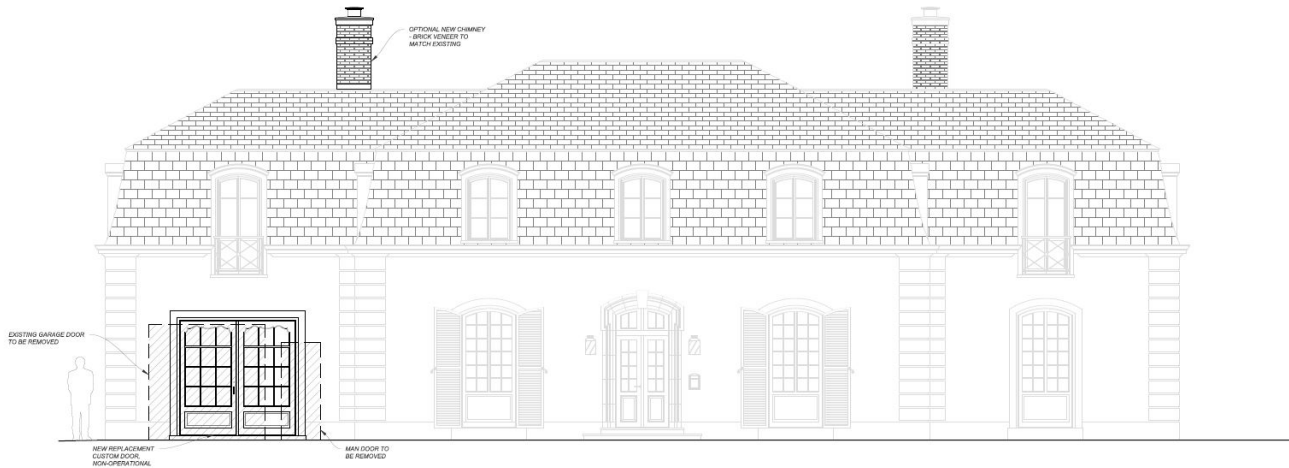
151 Ridge Lane.
Lake Forest, IL



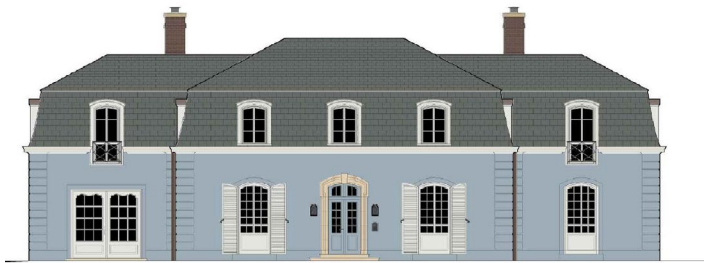
1 VIEW LOOKING NORTH



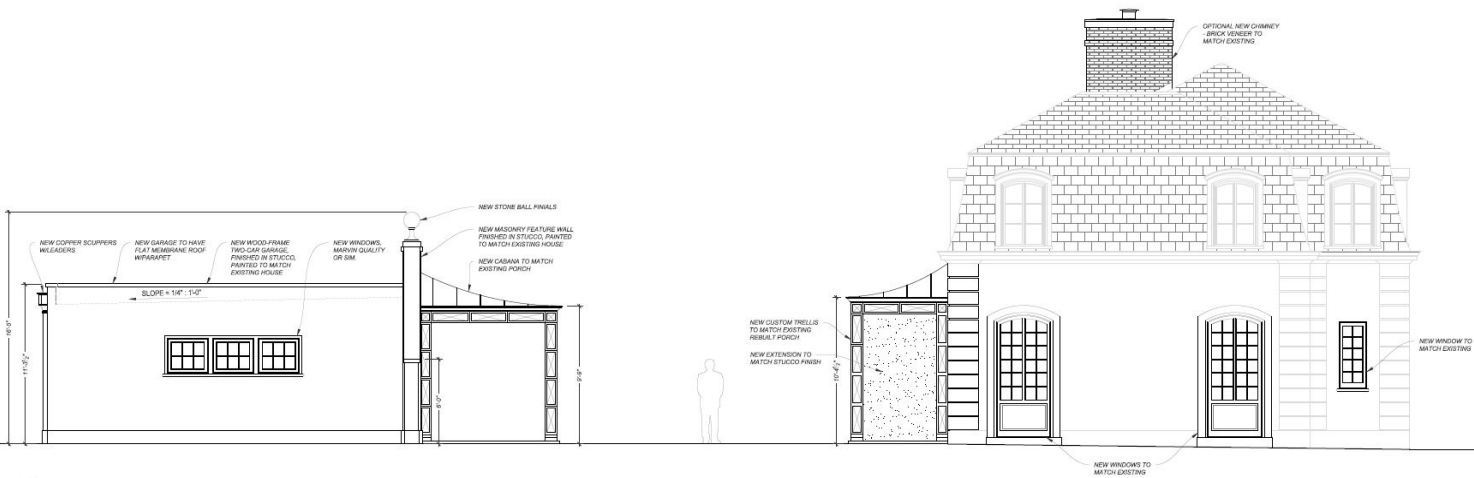
1 VIEW LOOKING SOUTH



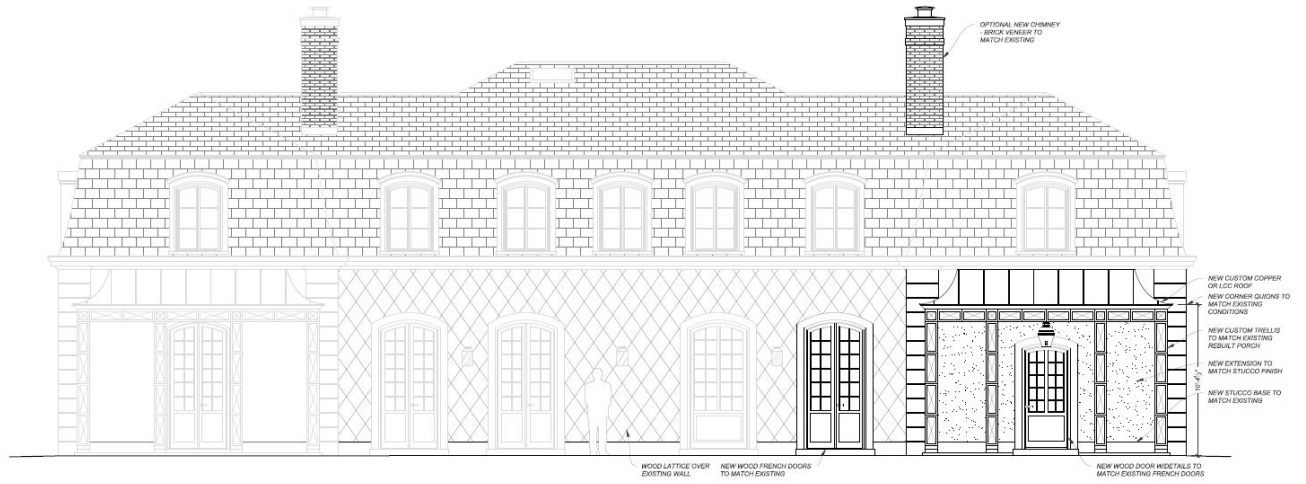
1 WEST ELEVATION - OVERLAY
SCALE: 1/4"=1'-0"



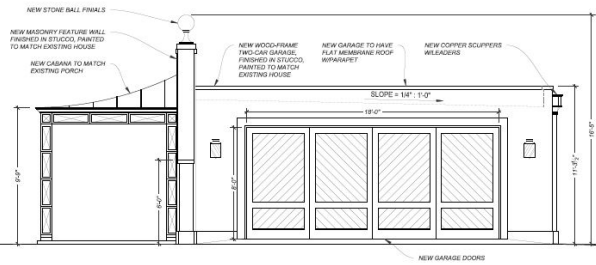
4 WEST ELEVATION - COLOR RENDERING



1 NORTH ELEVATION - OVERLAY
SCALE: 1/4"=1'-0"



1 EAST ELEVATION - OVERLAY
SCALE: 1/4"=1'0"



1 SOUTH ELEVATION - OVERLAY
SCALE: 1/4"=1'0"

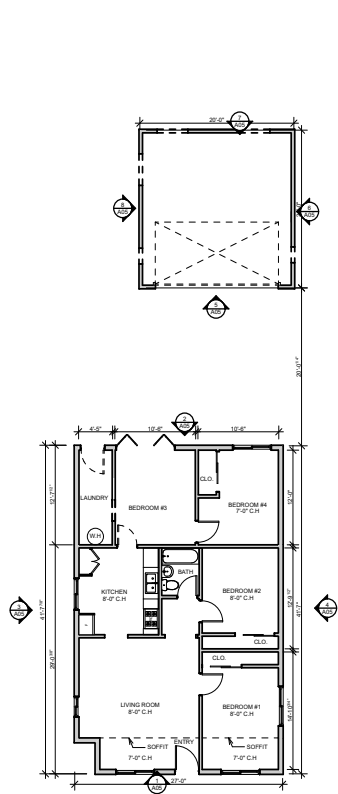
RESIDENTIAL PROJECT

Riyadh, Saudi Arabia

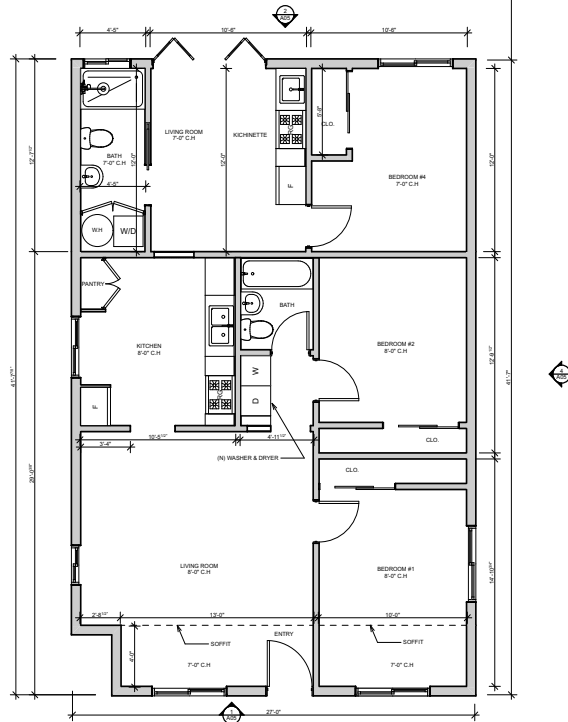
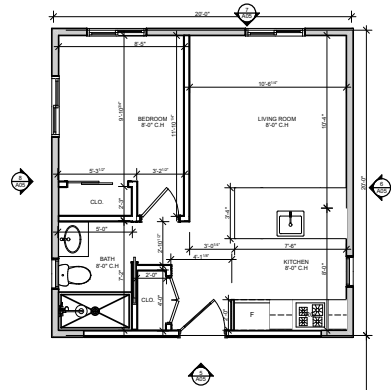
PRIVATE RESIDENT LOCATED IN RIYADH CITY. CLIENT ASK FOR LIVING ROOM THAT HAS INDOOR AND OUT DOOR EXPERIENCE. SKY LIGHT HAS-BEEN USED TO GIVE ACCESS TO NATURAL LIGHT. PARTITION IN THE OUT DOOR AREA TO GIVE PRIVACY, FLOOR TO CEILING SLIDING DOOR TO OPEN THE INDOOR TO THE OUT DOOR.







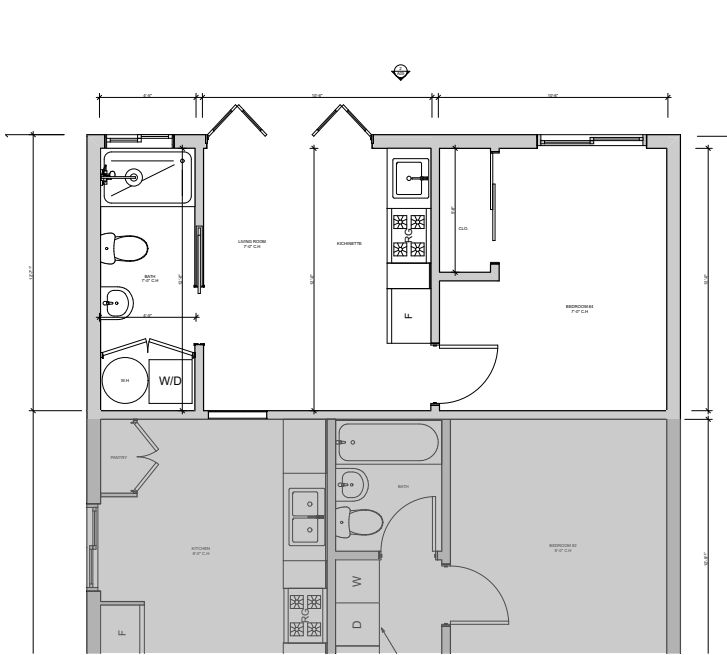
2 EXISTING FIRST FLOOR
SCALE: 1/8" = 1'-0"



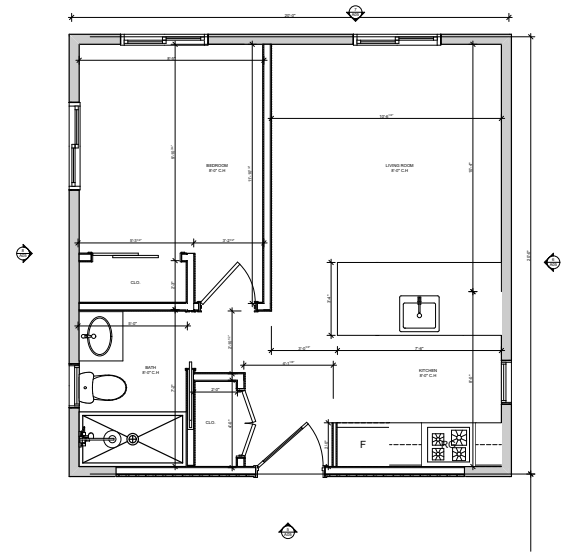
1 PROPOSED FIRST FLOOR
SCALE: 1/4" = 1'-0"



IF THIS DOES NOT MEASURE 1" ACTUAL, THIS DRAWING HAS BEEN ENLARGED OR REDUCED AND ALL LABELLED SCALES ARE INCORRECT.



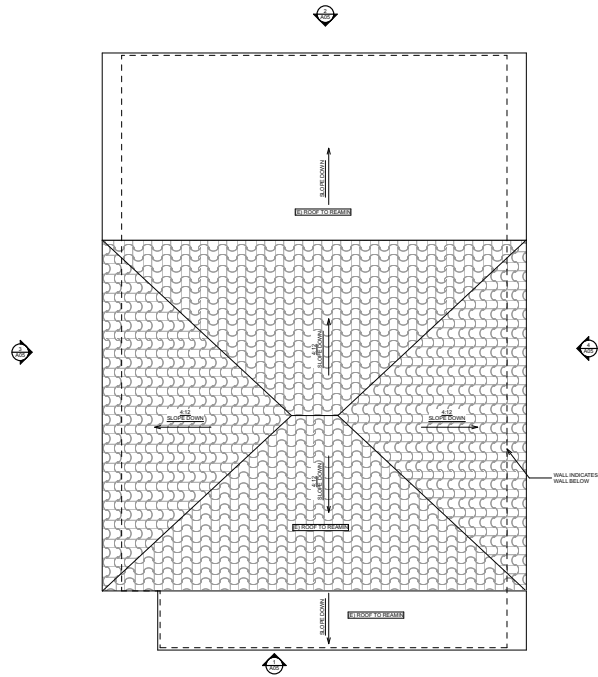
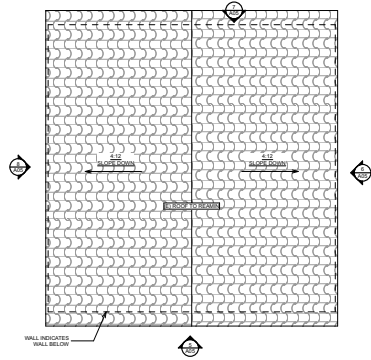
② PROPOSED JADU FLOOR PLAN
SCALE 1/2" = 1'-0"



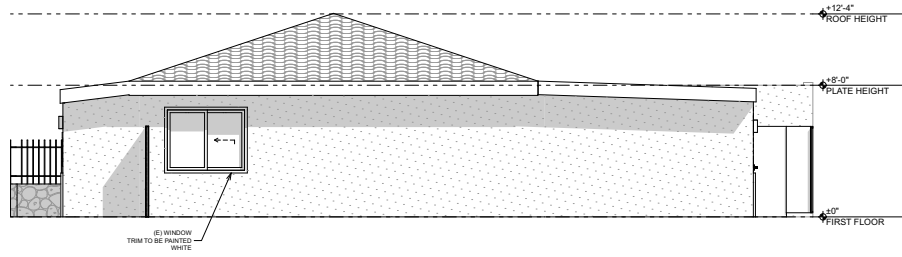
① PROPOSED ADU FLOOR PLAN
SCALE 1/2" = 1'-0"



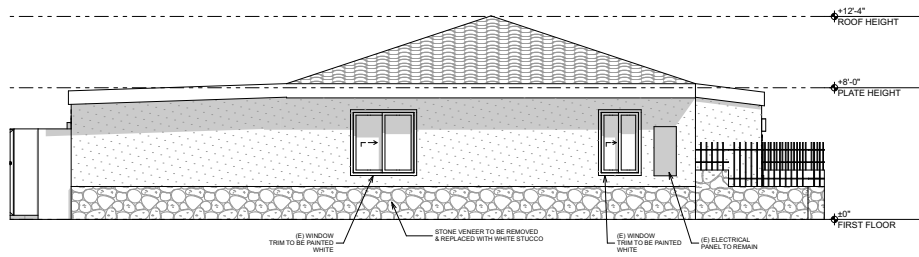
JADU FLOOR PLAN AND ADU



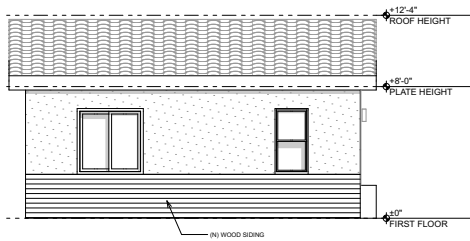
ROOF PLAN



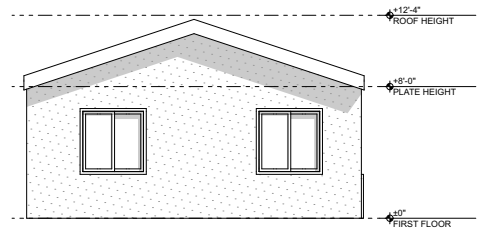
4 EXTERIOR ELEVATION
SCALE: 1/4" = 1'-0"



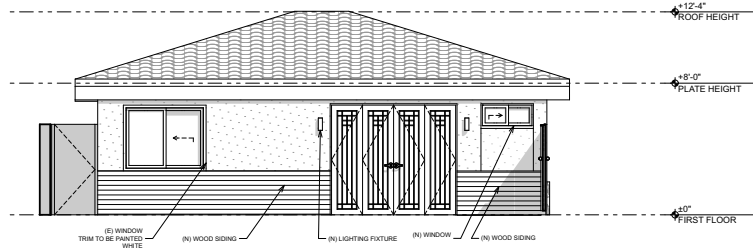
3 EXTERIOR ELEVATION
SCALE: 1/4" = 1'-0"



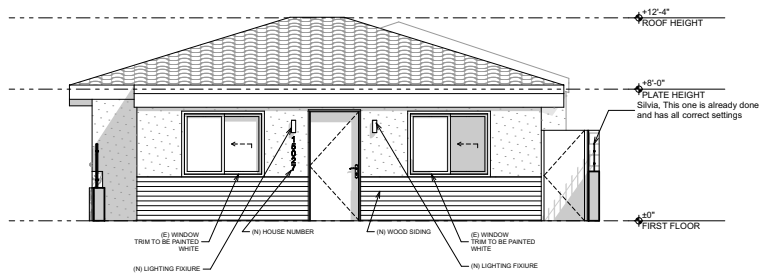
8 ADU EXTERIOR ELEVATION
SCALE: 1/4" = 1'-0"



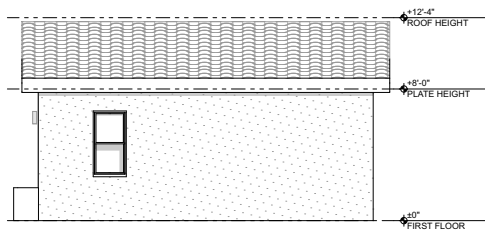
7 ADU EXTERIOR ELEVATION
SCALE: 1/4" = 1'-0"



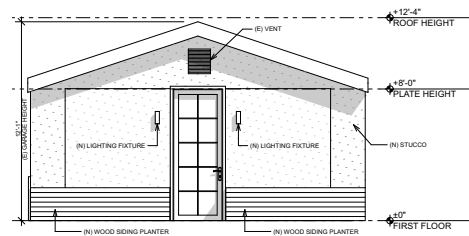
2 EXTERIOR ELEVATION
SCALE: 1/4" = 1'-0"



1 EXTERIOR ELEVATION
SCALE: 1/4" = 1'-0"



6 ADU EXTERIOR ELEVATION
SCALE: 1/4" = 1'-0"



5 ADU EXTERIOR ELEVATION
SCALE: 1/4" = 1'-0"



Construction Documentation

Concept

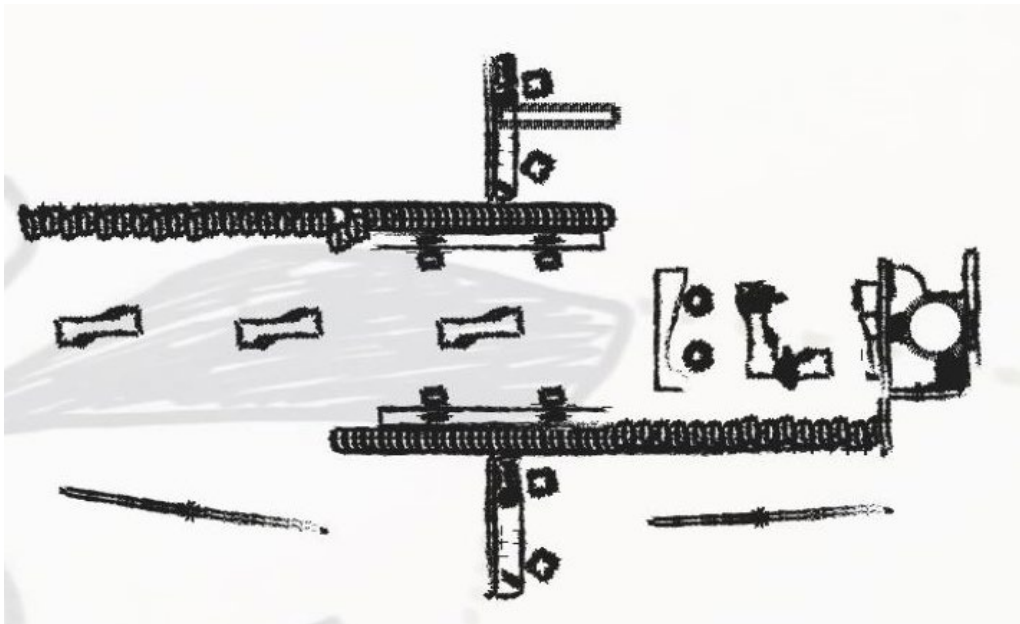
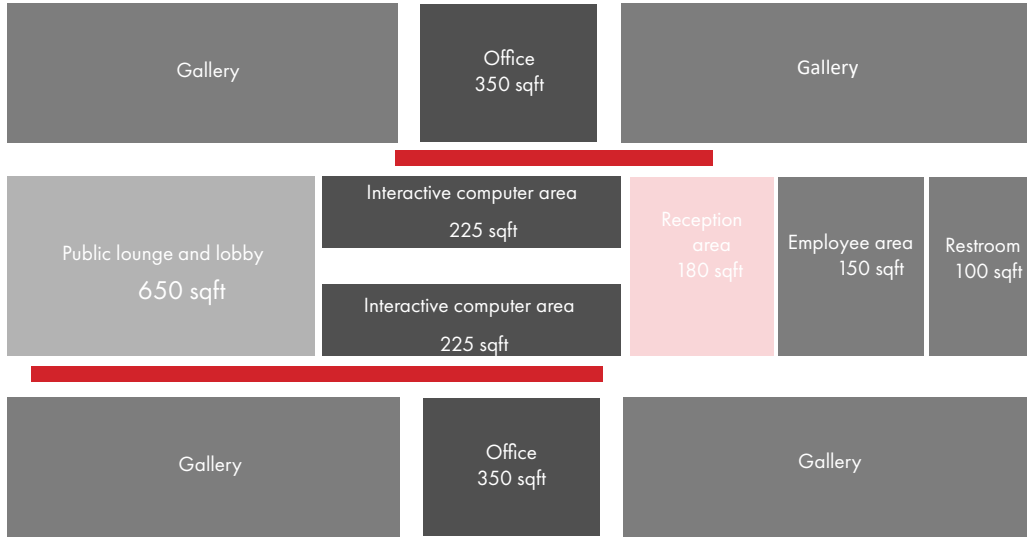
The design of this gallery/retail store will be very modern, light colors and high quality materials with high technology of viewing a digital and printed pictures in a systematic store walls. The main Idea is to optimize the place for a storage as a whole, as well as a setting area and offices.

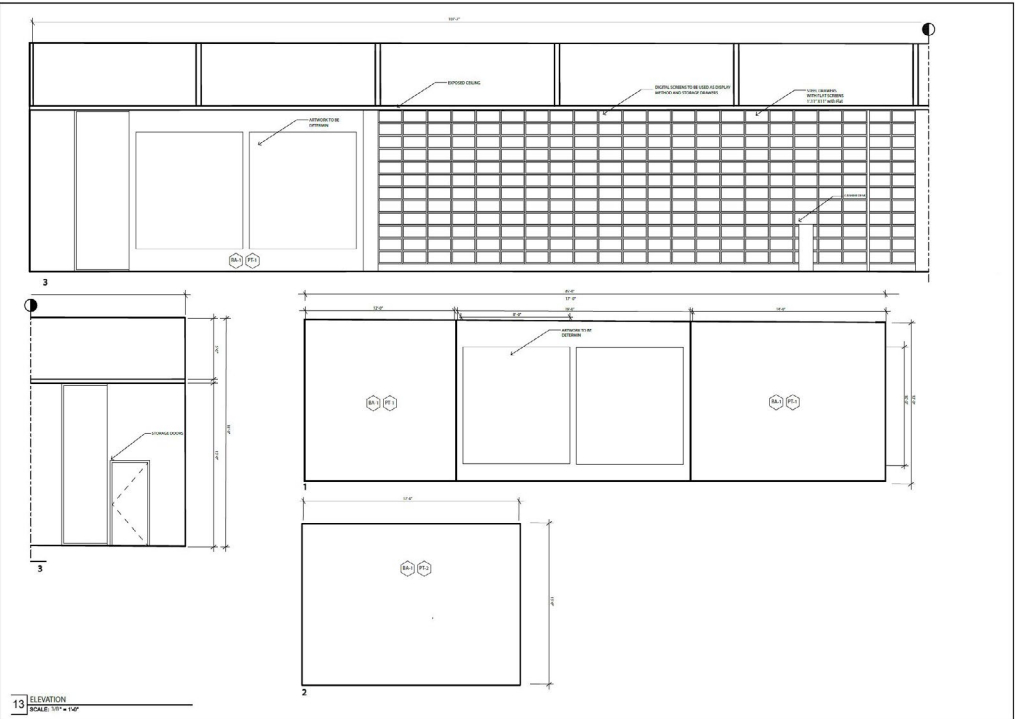
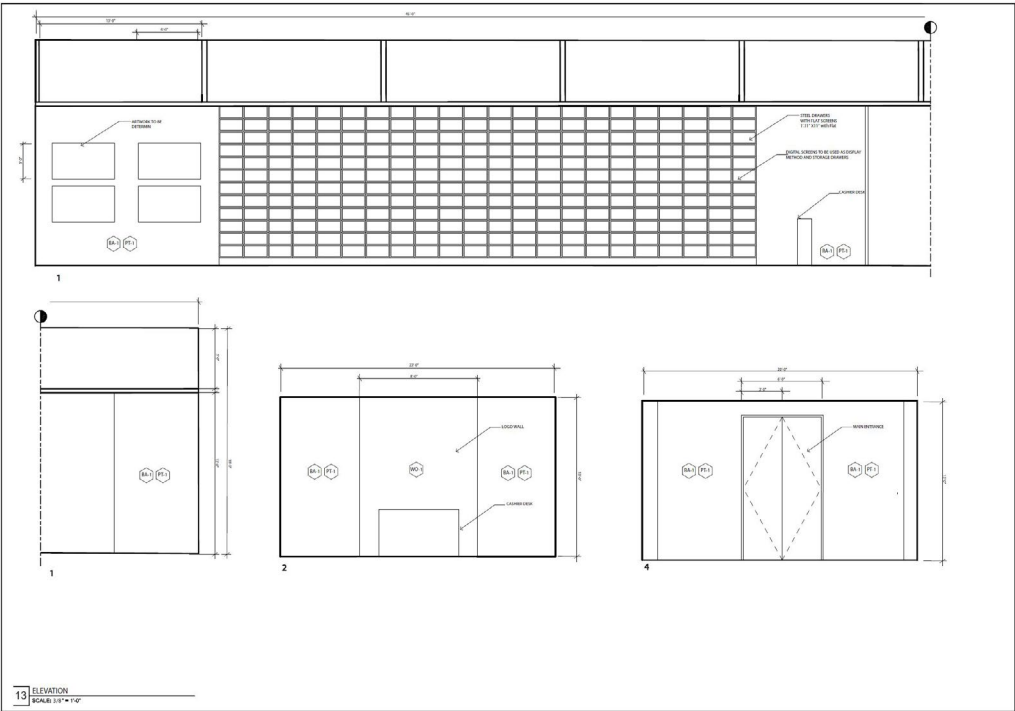
Goals

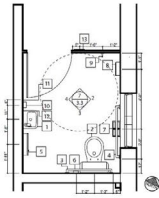
To Create a space that enhance the experience of the gallery/retail store, by creating an Environment for each picture depending on the angel it look from, throw a system of screams walls that will allow to divide the space into multiple groups.

Problem/Solution

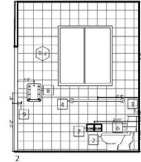
A semi grid system was created to divide the space without having doors and closed rooms through the screen partition. The space also divided through different ceiling hight.





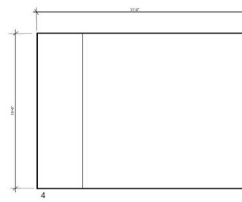
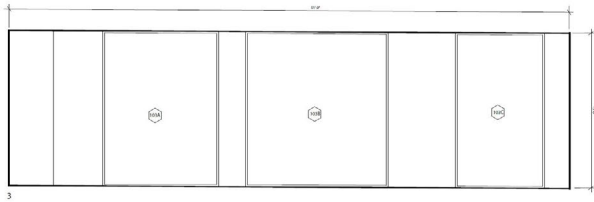


NO.	DESCRIPTION	QTY	UNIT	REMARKS
1	WALL	1	SQ. FT.	10' x 10' x 1/2"
2	FLOOR	1	SQ. FT.	10' x 10' x 1/2"
3	CEILING	1	SQ. FT.	10' x 10' x 1/2"
4	DOOR	1	EA.	10' x 10' x 1/2"
5	TOILET	1	EA.	10' x 10' x 1/2"
6	SINK	1	EA.	10' x 10' x 1/2"
7	VANITY	1	EA.	10' x 10' x 1/2"
8	MIRROR	1	EA.	10' x 10' x 1/2"
9	SHOWER	1	EA.	10' x 10' x 1/2"
10	GLASS	1	SQ. FT.	10' x 10' x 1/2"
11	GLASS	1	SQ. FT.	10' x 10' x 1/2"
12	GLASS	1	SQ. FT.	10' x 10' x 1/2"
13	GLASS	1	SQ. FT.	10' x 10' x 1/2"
14	GLASS	1	SQ. FT.	10' x 10' x 1/2"
15	GLASS	1	SQ. FT.	10' x 10' x 1/2"
16	GLASS	1	SQ. FT.	10' x 10' x 1/2"
17	GLASS	1	SQ. FT.	10' x 10' x 1/2"
18	GLASS	1	SQ. FT.	10' x 10' x 1/2"
19	GLASS	1	SQ. FT.	10' x 10' x 1/2"
20	GLASS	1	SQ. FT.	10' x 10' x 1/2"
21	GLASS	1	SQ. FT.	10' x 10' x 1/2"
22	GLASS	1	SQ. FT.	10' x 10' x 1/2"
23	GLASS	1	SQ. FT.	10' x 10' x 1/2"
24	GLASS	1	SQ. FT.	10' x 10' x 1/2"
25	GLASS	1	SQ. FT.	10' x 10' x 1/2"
26	GLASS	1	SQ. FT.	10' x 10' x 1/2"
27	GLASS	1	SQ. FT.	10' x 10' x 1/2"
28	GLASS	1	SQ. FT.	10' x 10' x 1/2"
29	GLASS	1	SQ. FT.	10' x 10' x 1/2"
30	GLASS	1	SQ. FT.	10' x 10' x 1/2"
31	GLASS	1	SQ. FT.	10' x 10' x 1/2"
32	GLASS	1	SQ. FT.	10' x 10' x 1/2"
33	GLASS	1	SQ. FT.	10' x 10' x 1/2"
34	GLASS	1	SQ. FT.	10' x 10' x 1/2"
35	GLASS	1	SQ. FT.	10' x 10' x 1/2"
36	GLASS	1	SQ. FT.	10' x 10' x 1/2"
37	GLASS	1	SQ. FT.	10' x 10' x 1/2"
38	GLASS	1	SQ. FT.	10' x 10' x 1/2"
39	GLASS	1	SQ. FT.	10' x 10' x 1/2"
40	GLASS	1	SQ. FT.	10' x 10' x 1/2"
41	GLASS	1	SQ. FT.	10' x 10' x 1/2"
42	GLASS	1	SQ. FT.	10' x 10' x 1/2"
43	GLASS	1	SQ. FT.	10' x 10' x 1/2"
44	GLASS	1	SQ. FT.	10' x 10' x 1/2"
45	GLASS	1	SQ. FT.	10' x 10' x 1/2"
46	GLASS	1	SQ. FT.	10' x 10' x 1/2"
47	GLASS	1	SQ. FT.	10' x 10' x 1/2"
48	GLASS	1	SQ. FT.	10' x 10' x 1/2"
49	GLASS	1	SQ. FT.	10' x 10' x 1/2"
50	GLASS	1	SQ. FT.	10' x 10' x 1/2"



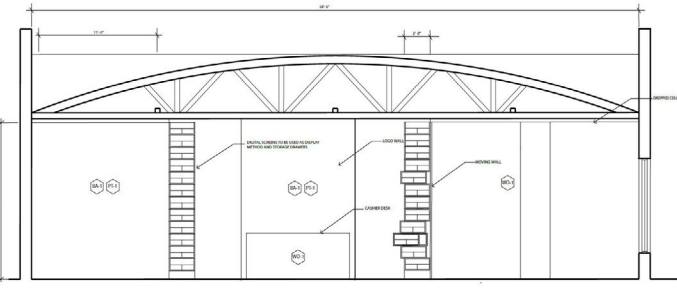
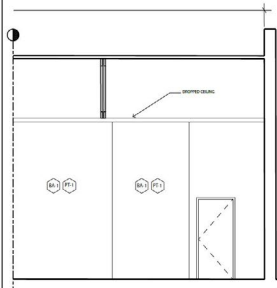
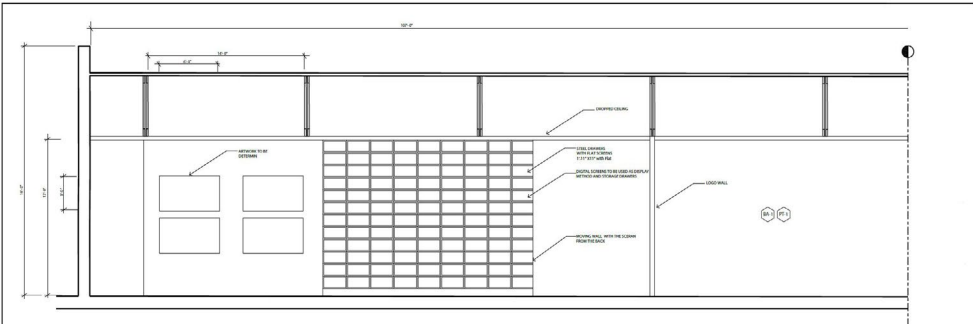
15 TOILET FLOOR PLAN
SCALE: 1/8" = 1'-0"

7 TOILET INT. ELEVATIONS
SCALE: 1/8" = 1'-0"



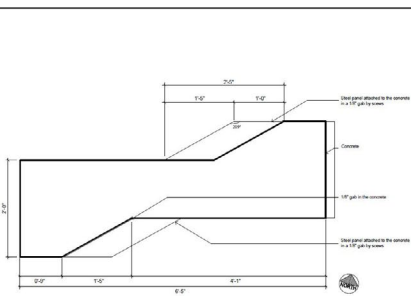
13 ELEVATION
SCALE: 1/8" = 1'-0"

1 ELEVATION
SCALE: 1/8" = 1'-0"

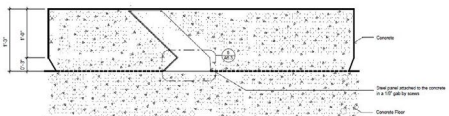


13 SECTION
SCALE: 1/8" = 1'-0"

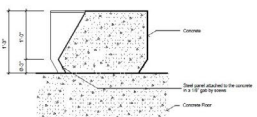
5 SECTION
SCALE: 1/8" = 1'-0"



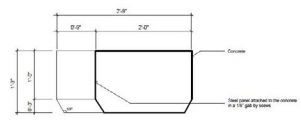
15 FIXED SEAT FLOORPLAN
SCALE: 1/2"=1'-0"



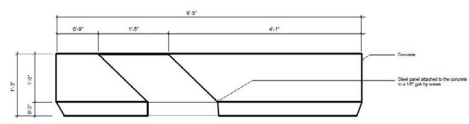
14 FIXED SEAT NORTH SECTION
SCALE: 1/2"=1'-0"



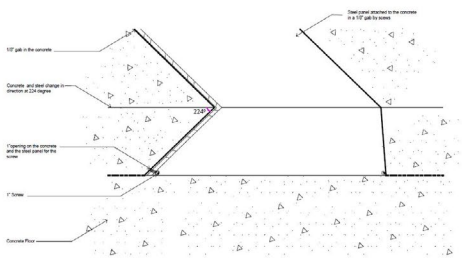
13 FIXED SEAT NORTH EAST SECTION
SCALE: 1/2"=1'-0"



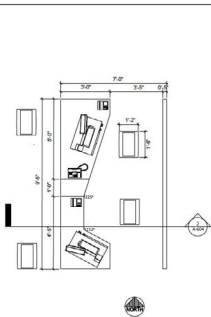
8 FIXED SEAT WEST ELEVATION
SCALE: 1/2"=1'-0"



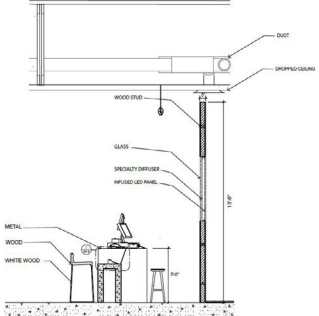
7 FIXED SEAT WEST ELEVATION
SCALE: 1/2"=1'-0"



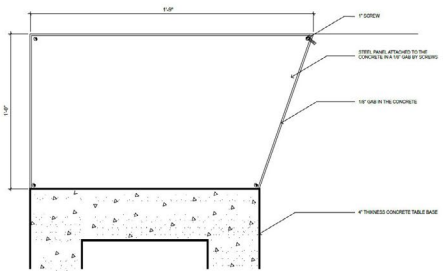
5 FIXED SEAT DETAILED SECTION
SCALE: 1/2"=1'-0"



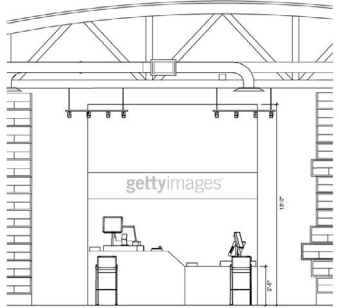
15 CASH WRAP FLOOR PLAN
SCALE: 1/2"=1'-0"



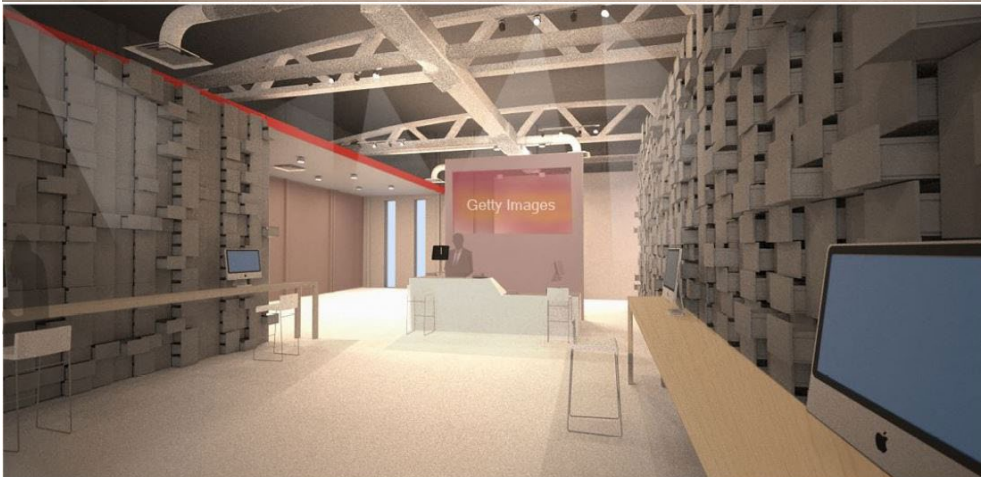
13 CASH WRAP SECTION
SCALE: 1/2"=1'-0"



7 CASH WRAP DETAILED SECTION
SCALE: 1/2"=1'-0"



6 CASH WRAP EAST ELEVATION
SCALE: 1/2"=1'-0"



Thesis
(Iceland retail store)

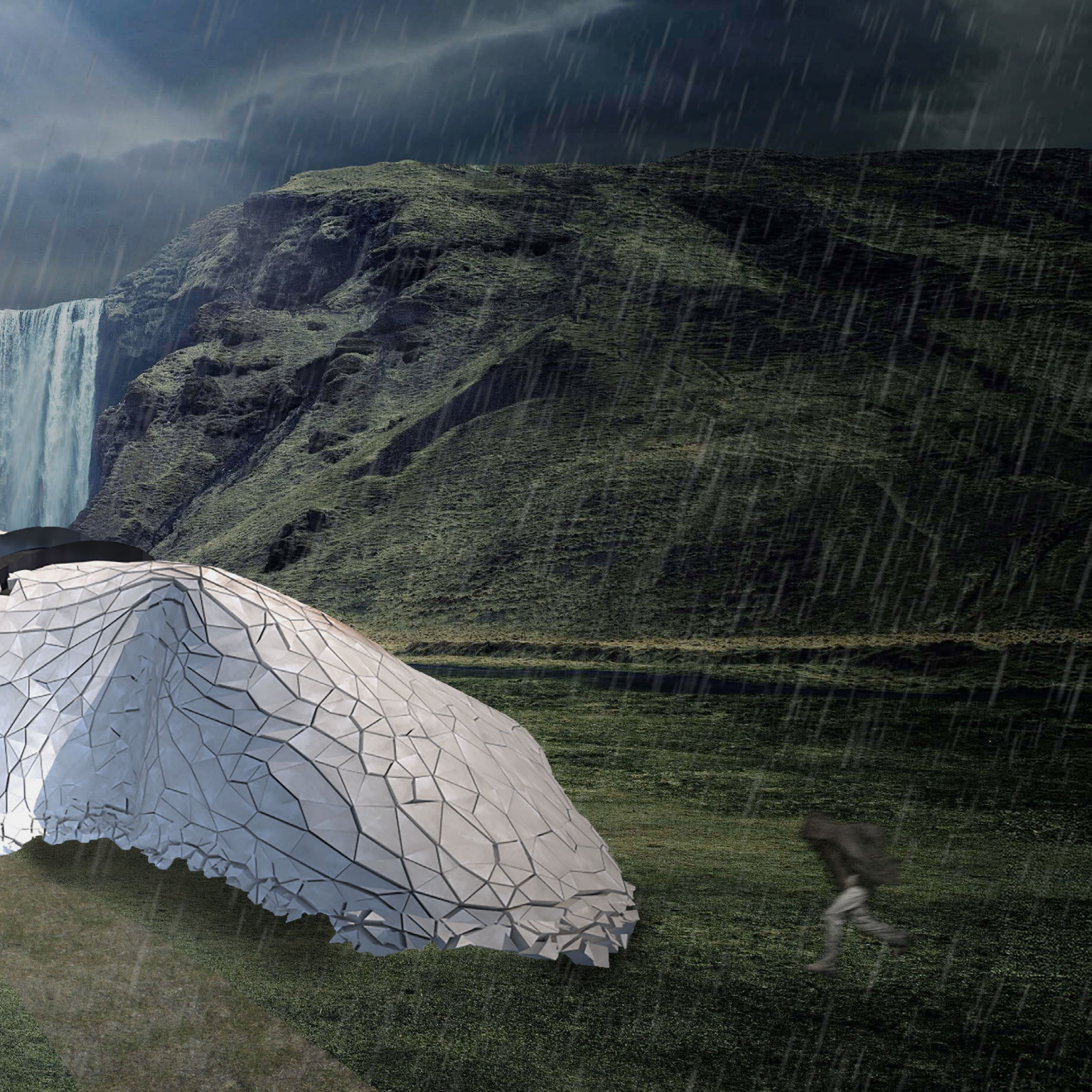




Wrinkles, Folds and Fur: A cast boutique for Suri Recht

Concrete is both a process and a material. As a cast substance, concrete relies on the conditions of form work and the composition of the slurry to define its form and surface effects. It takes on the porosities of the mold under gravity. There is a long tradition of alternative material use in the casting process; Schindler's use of canvas in tilt-up construction, the sags and bulges of burlap and nylon in the work of Miguel Fisac and Andrew Kudless. This thesis will explore the use of leather as primary component of casting from work, and will result in a boutique for the Icelandic designer Suri Recht, examining the forms, textures, and colors of the landscape that inspire his work.



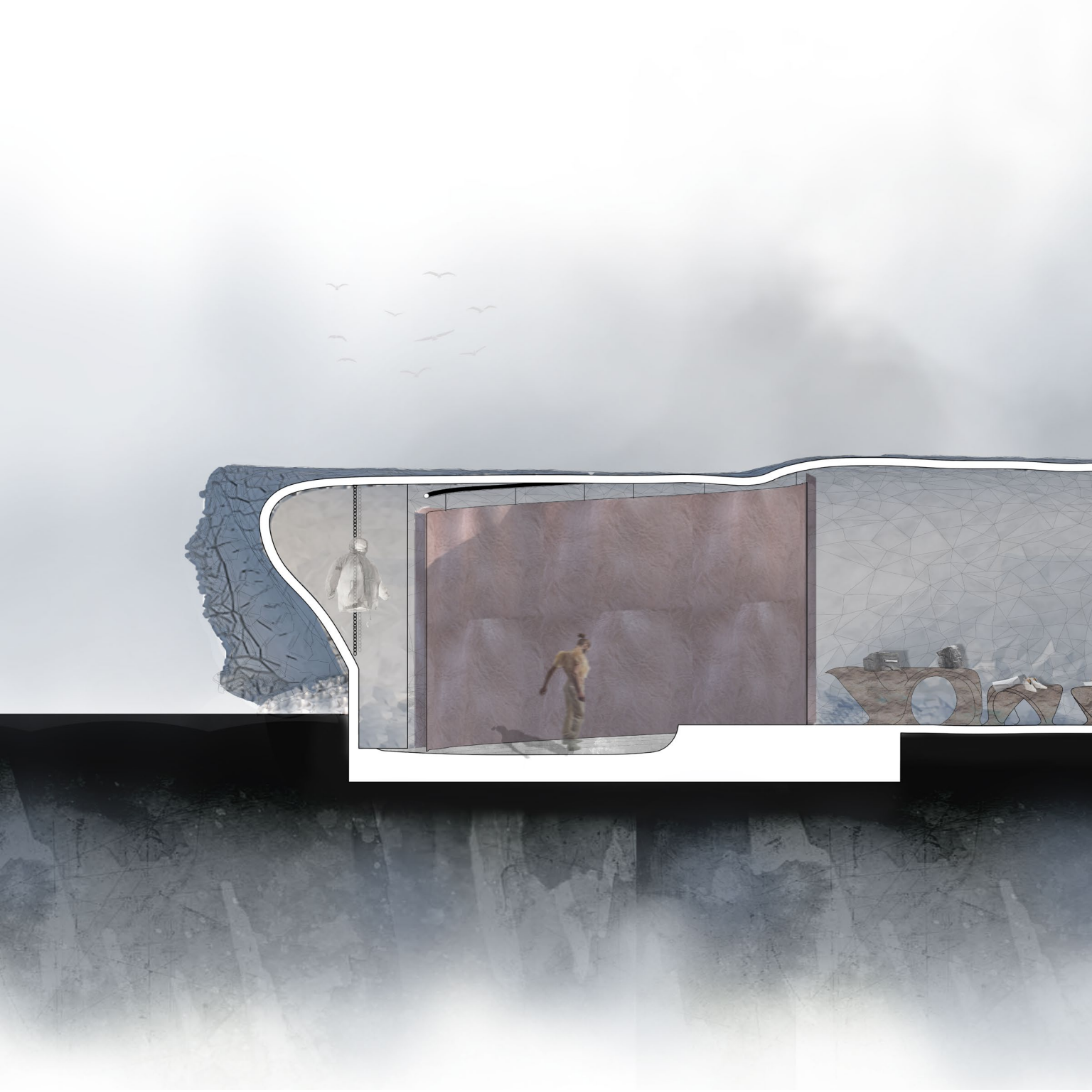


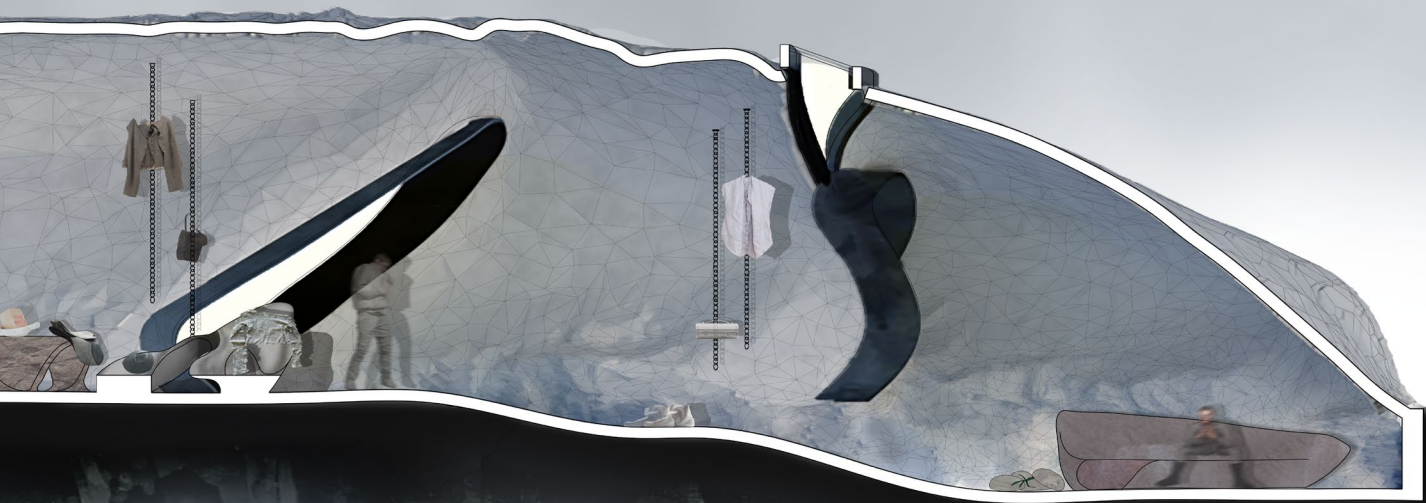


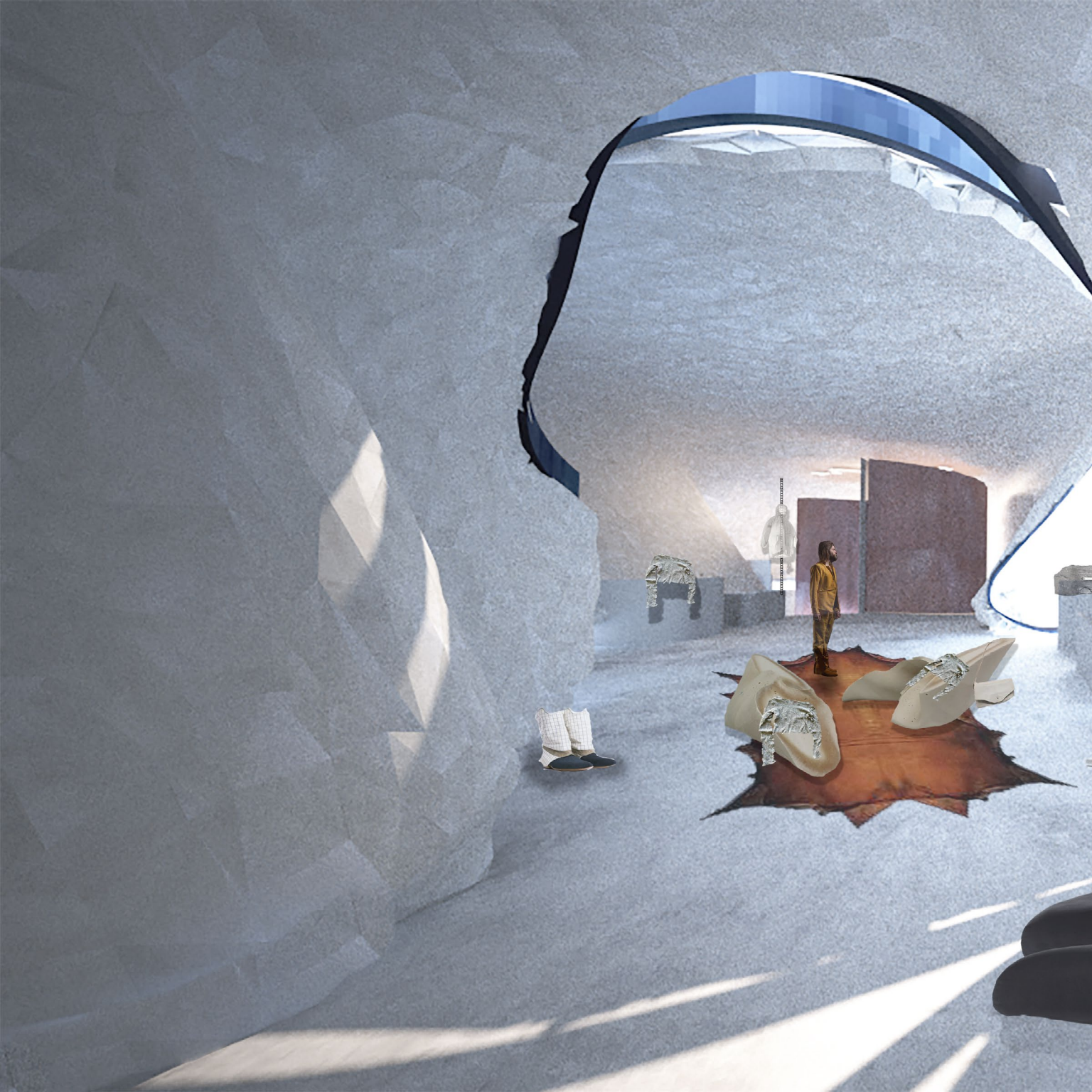






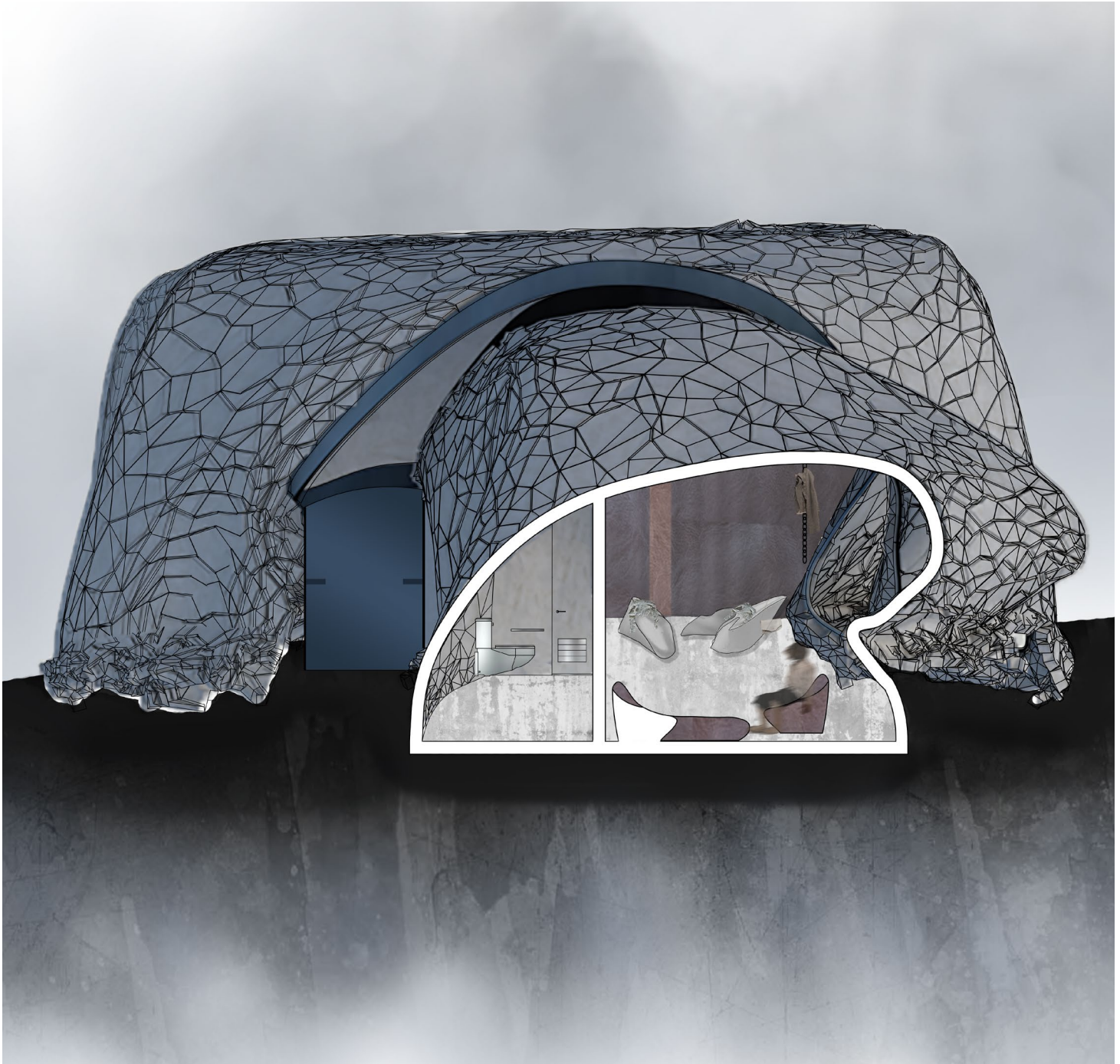


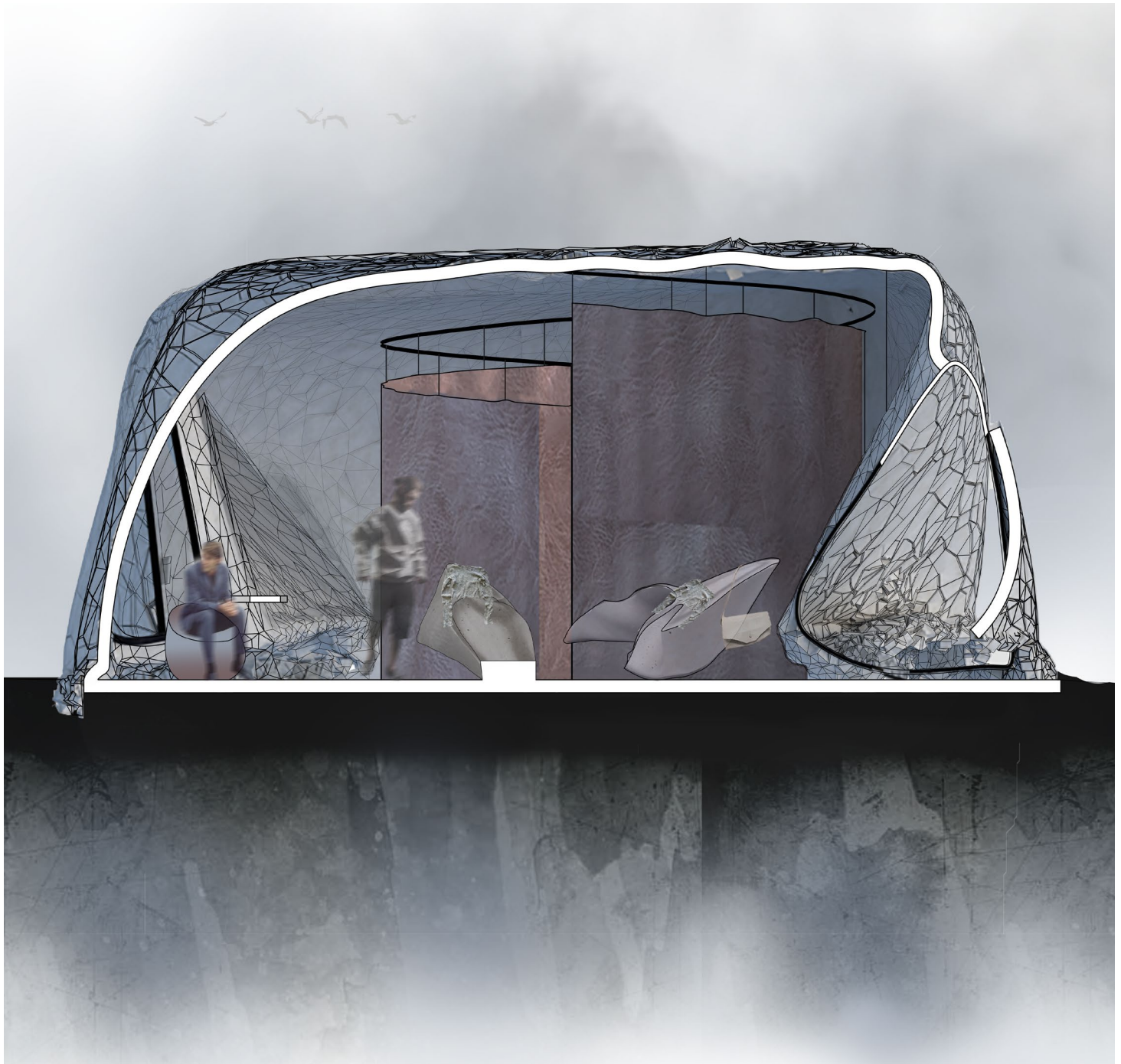






CHICAGO ILLINOIS 60601







THANK YOU