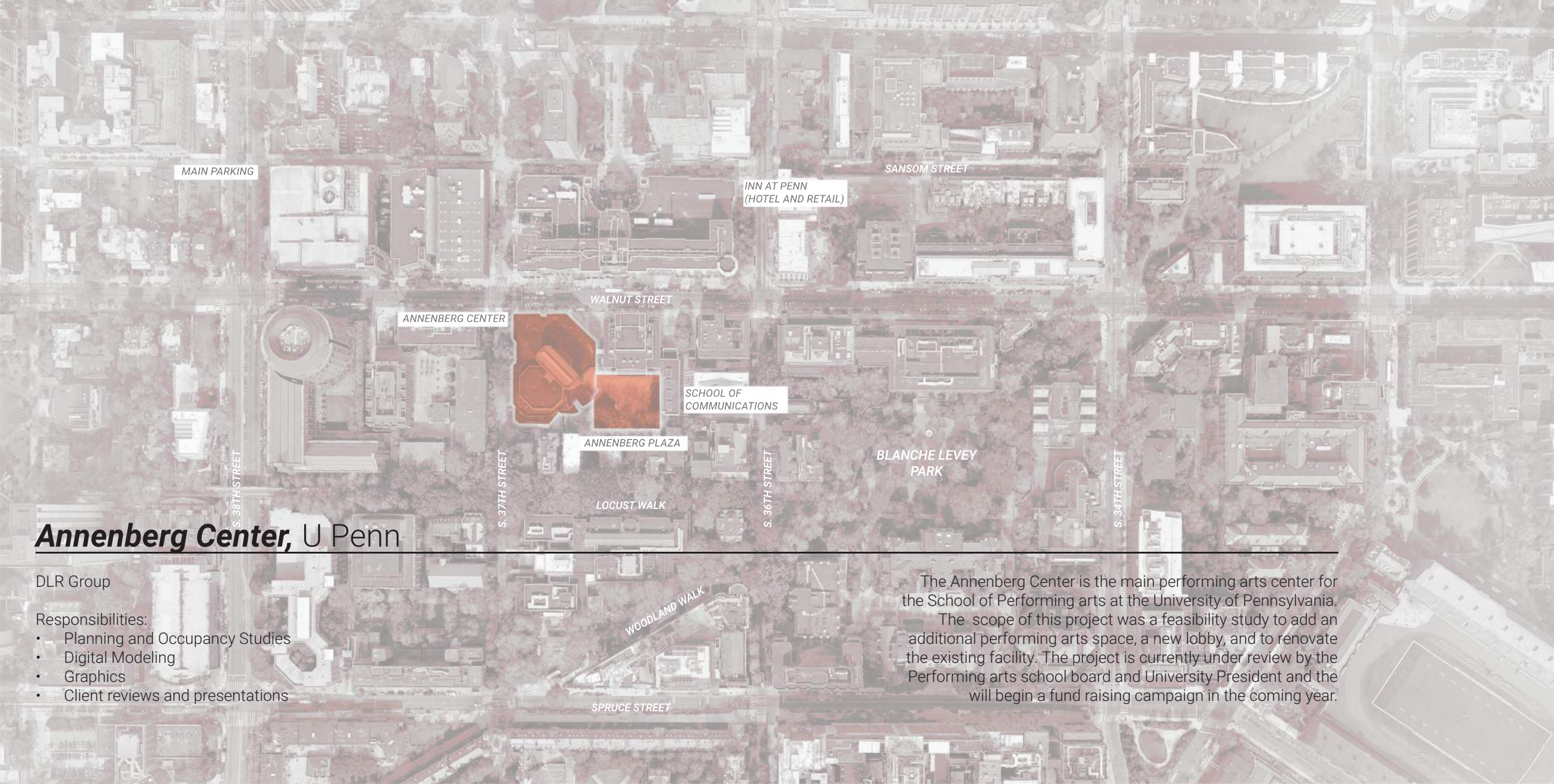


**Jonathan Rankin**  
Professional Works



MAIN PARKING

SANSOM STREET

INN AT PENN  
(HOTEL AND RETAIL)

WALNUT STREET

ANNENBERG CENTER

SCHOOL OF  
COMMUNICATIONS

ANNENBERG PLAZA

BLANCHE LEVEY  
PARK

LOCUST WALK

S. 37TH STREET

S. 36TH STREET

S. 34TH STREET

S. 38TH STREET

WOODLAND WALK

SPRUCE STREET

## ***Annenberg Center*, U Penn**

DLR Group

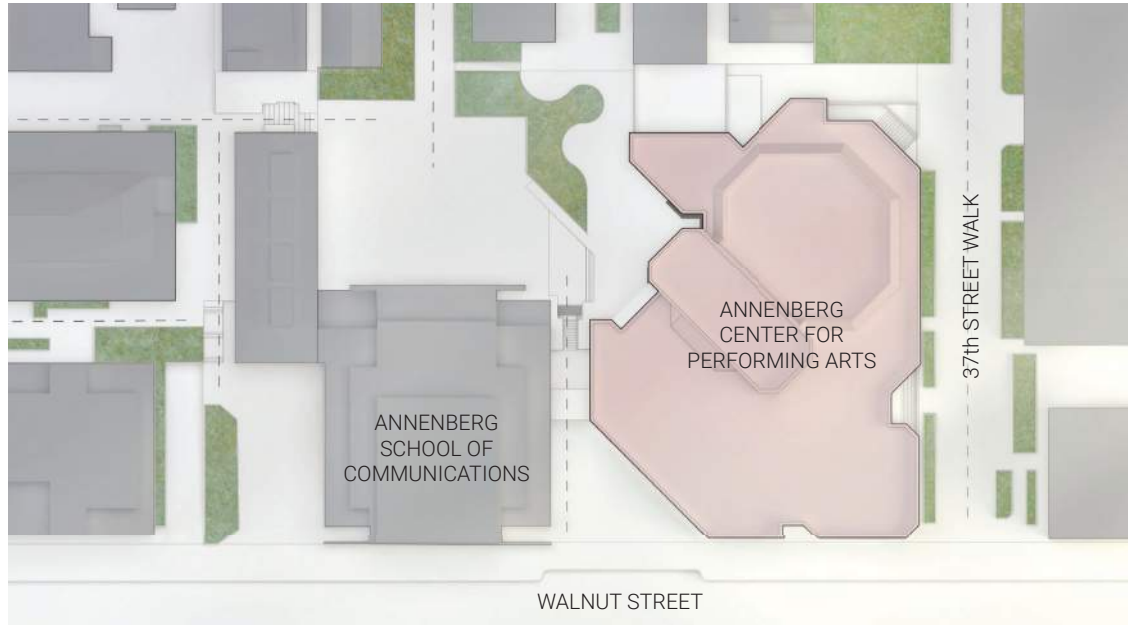
Responsibilities:

- Planning and Occupancy Studies
- Digital Modeling
- Graphics
- Client reviews and presentations

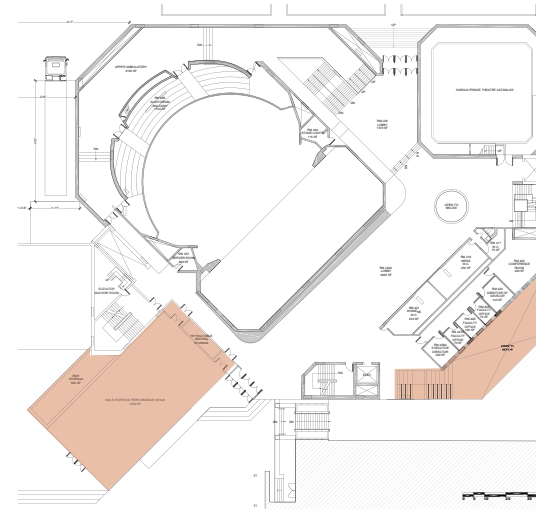
The Annenberg Center is the main performing arts center for the School of Performing arts at the University of Pennsylvania.

The scope of this project was a feasibility study to add an additional performing arts space, a new lobby, and to renovate the existing facility. The project is currently under review by the Performing arts school board and University President and the will begin a fund raising campaign in the coming year.

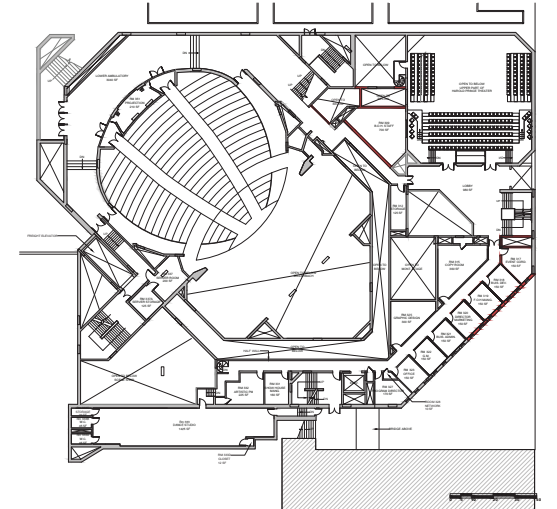




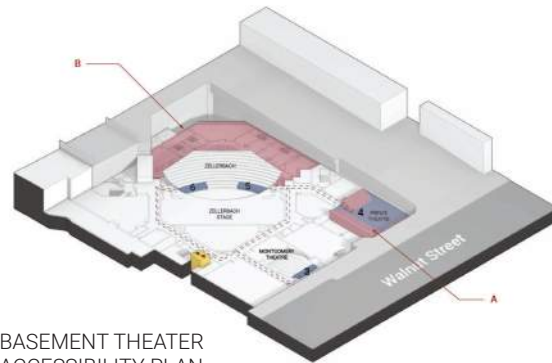
SITE PLAN



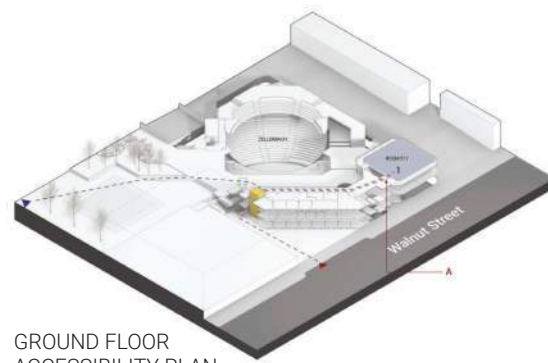
GROUND FLOOR PLAN WITH ADDITION



BASEMENT FLOOR PLAN



BASEMENT THEATER  
ACCESSIBILITY PLAN



GROUND FLOOR  
ACCESSIBILITY PLAN



LOBBY ADDITION RENDER



EXISTING PLAZA PHOTO



PROPOSED PLAZA RENDER



EXISTING WALNUT STREET ENTRY PHOTO



PROPOSED WALNUT STREET ENTRY RENDER





BOX OFFICE

CAFE

PRINCE THEATRE

An abstract architectural rendering of the Shenzhen Natural History Museum. The image features several large, angular, and overlapping geometric forms in shades of gray, suggesting a modern, sculptural building design. The forms are set against a light, hazy background, creating a sense of depth and volume. The overall aesthetic is minimalist and architectural.

## ***Natural History Museum,*** Shenzhen

---

DLR Group

Responsibilities:

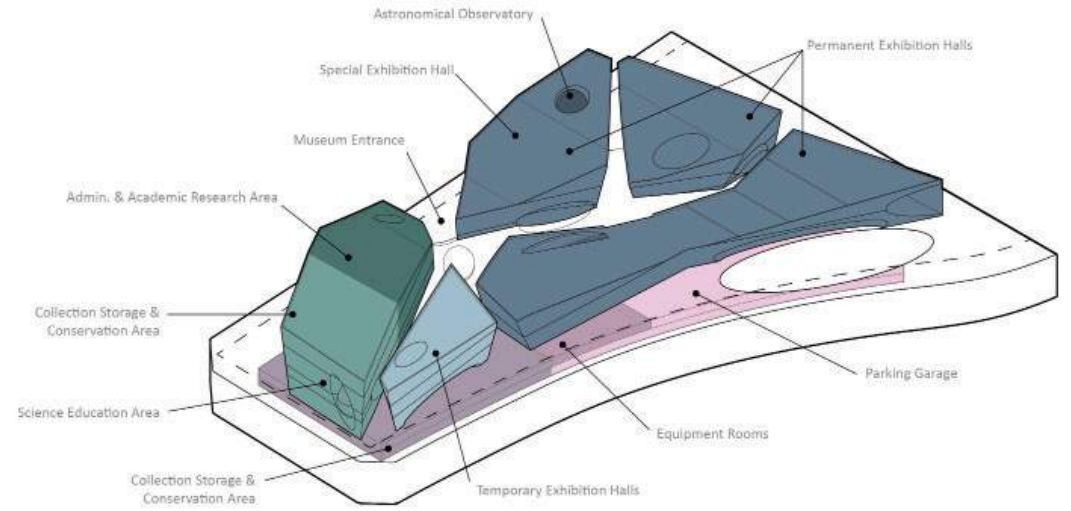
- Conceptual Design and Program Layout
- Digital Modeling
- Graphics
- Competition booklet content organization
- Consultant Coordination

The Shenzhen Natural History Museum was an open international design competition for a 100,000 sqm museum in the Guang Dong Province Outside of Shenzhen China. The scope of the competition was to provide conceptual building massing and conceptual space programming. DLR Group placed 10th overall in the competition.



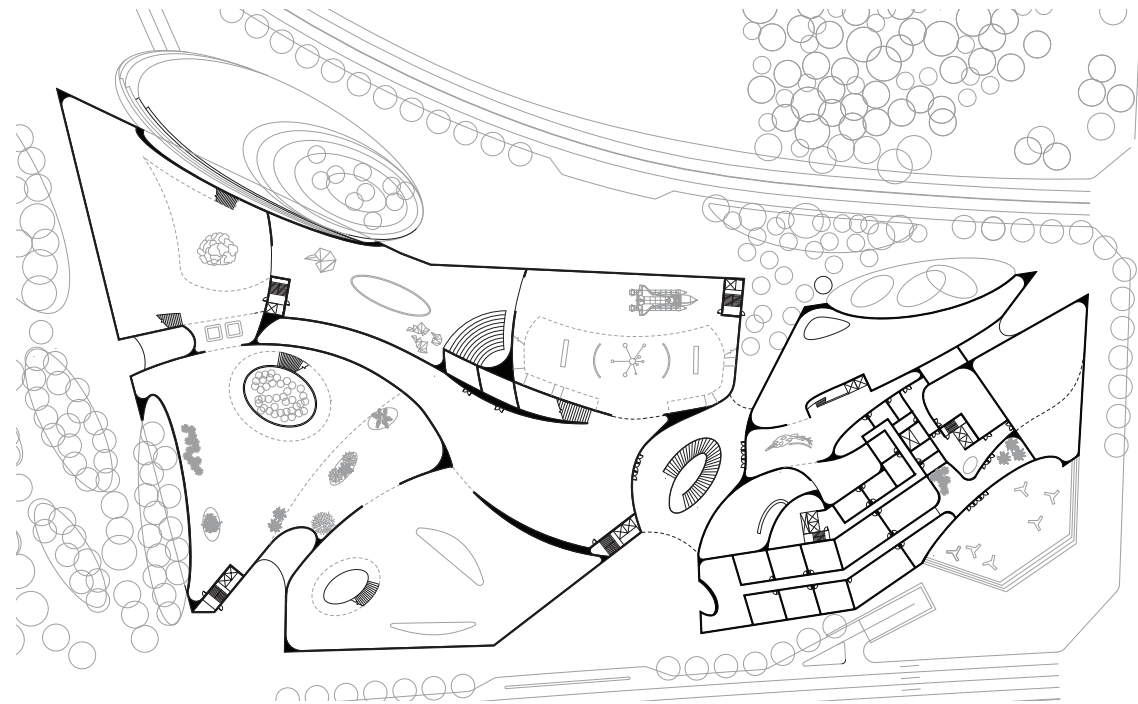


SITE PLAN

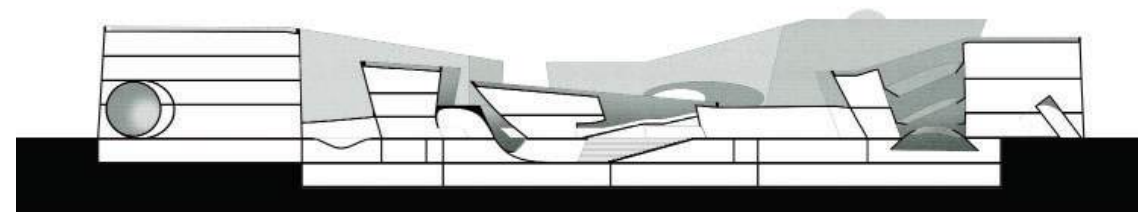


PROGRAM AXON





GROUND FLOOR PLAN



BUILDING SECTION







An architectural rendering of the interior of the Shenzhen Opera. The space is vast and modern, featuring a large, curved, white ceiling and walls. The floor is a light-colored, polished material. On the left, there are curved, white walls with a warm, golden-brown interior lining. People are scattered throughout the space, some standing, some walking, and some sitting on the floor, providing a sense of scale. Large windows on the right side offer a view of the outdoors, where trees and a body of water are visible. The overall atmosphere is bright and airy.

## ***Shenzhen Opera***, Shenzhen China

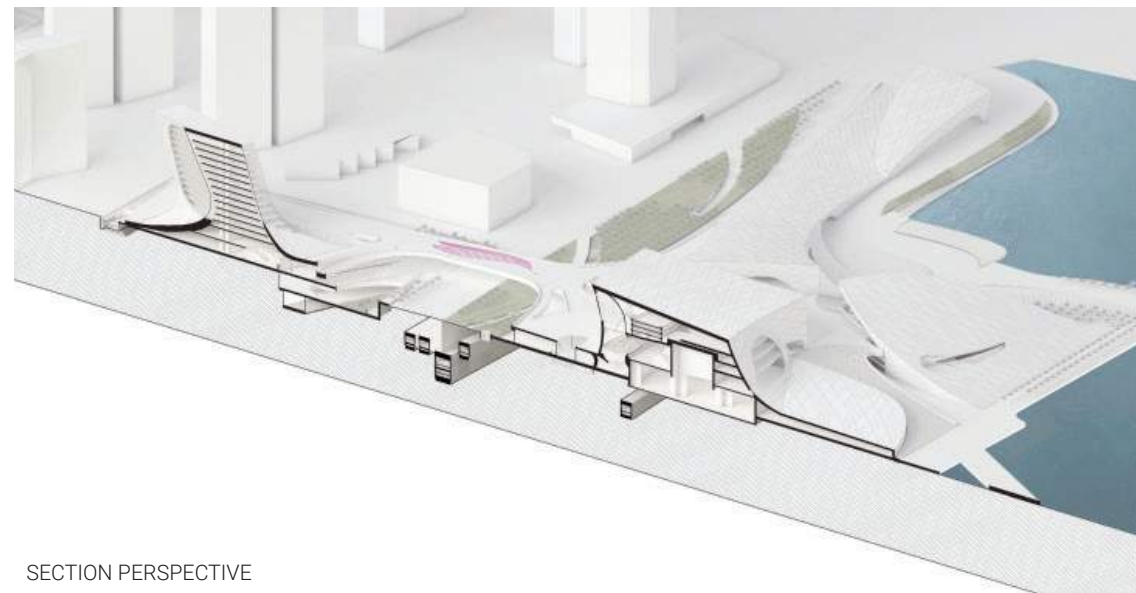
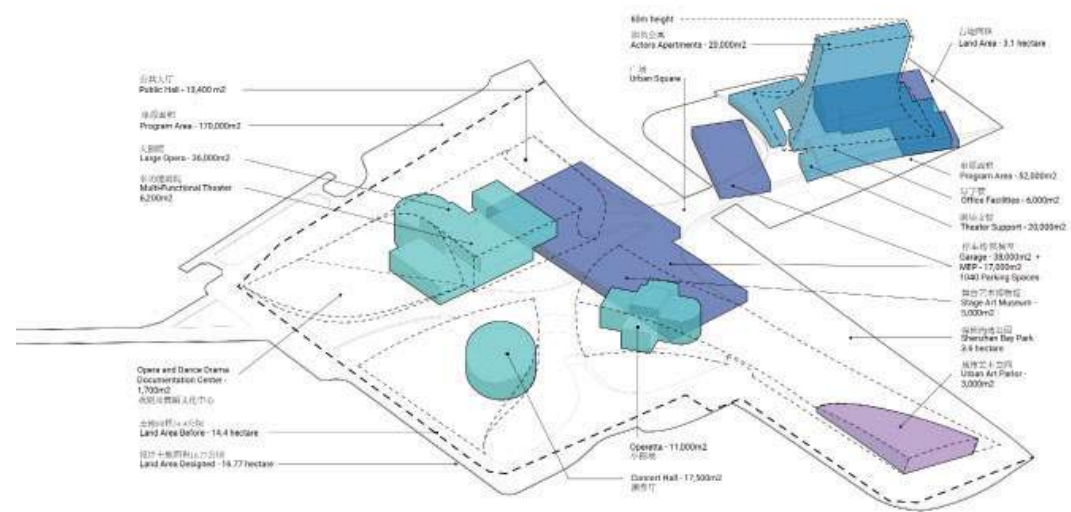
DLR Group

Responsibilities:

- Conceptual Design and Program Layout
- Digital Modeling
- Graphics
- Competition booklet content organization

The Shenzhen Opera was an open international design competition for a 100,000 sqm performing arts facility in Shenzhen China. The complex will consist of 4 different performing venues; a main opera hall, an operetta, a Concert hall, and a multipurpose performing venue. The scope of the competition was to provide a conceptual building massing and conceptual space program. DLR group made it to the 2nd







GROUND FLOOR PLAN

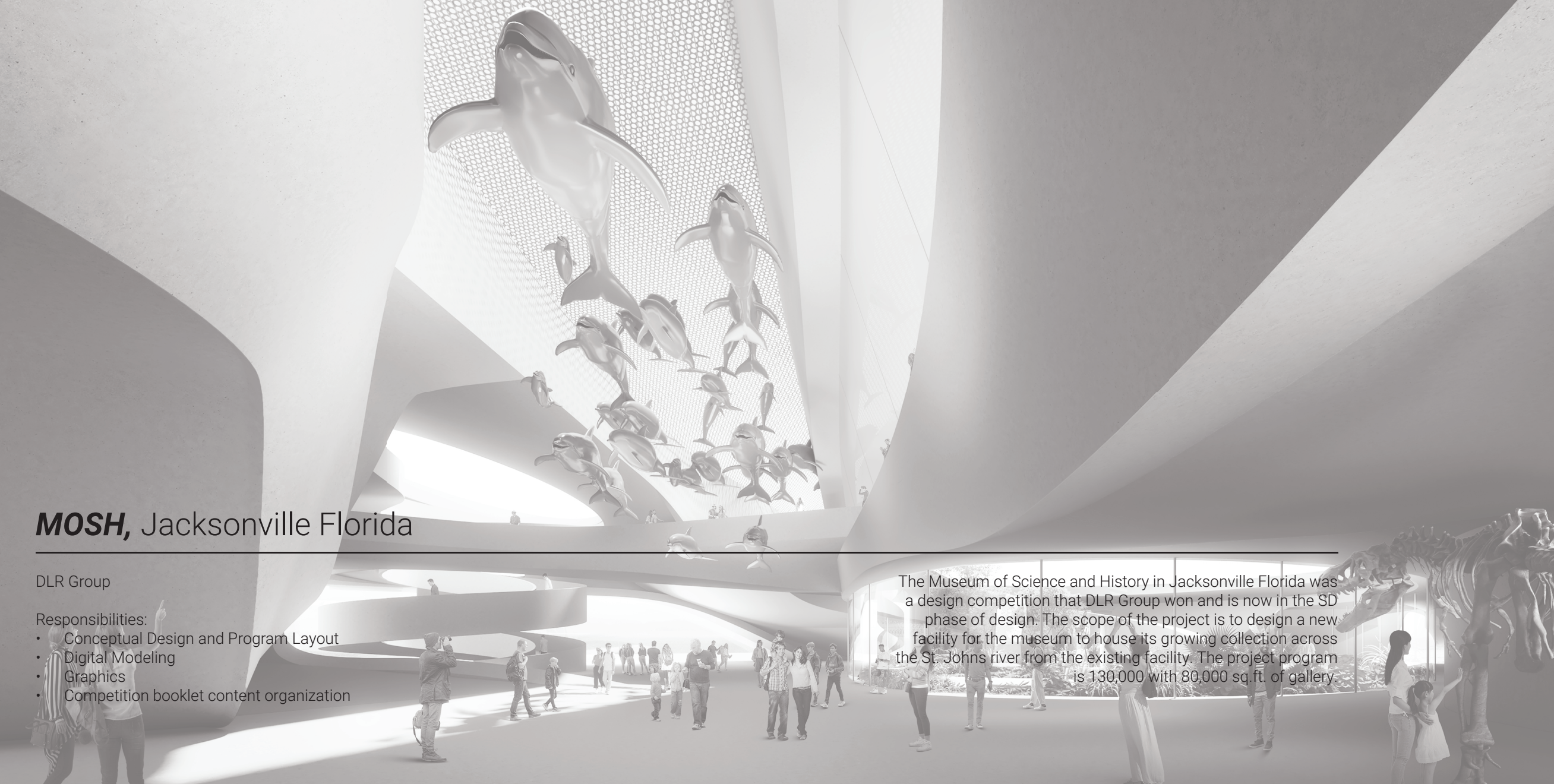


MAIN OPERA HALL







An architectural rendering of a museum interior. The space is characterized by large, curved, light-colored walls and a high ceiling. A massive sculpture of a whale, possibly a humpback, is the central focus, suspended in the air. Below it, a group of smaller whale sculptures are arranged in a cluster. In the foreground, a group of people, including adults and children, are walking and observing the exhibits. To the right, a large dinosaur skeleton is visible, partially obscured by the rendering's edge. The overall atmosphere is bright and modern.

## **MOSH,** Jacksonville Florida

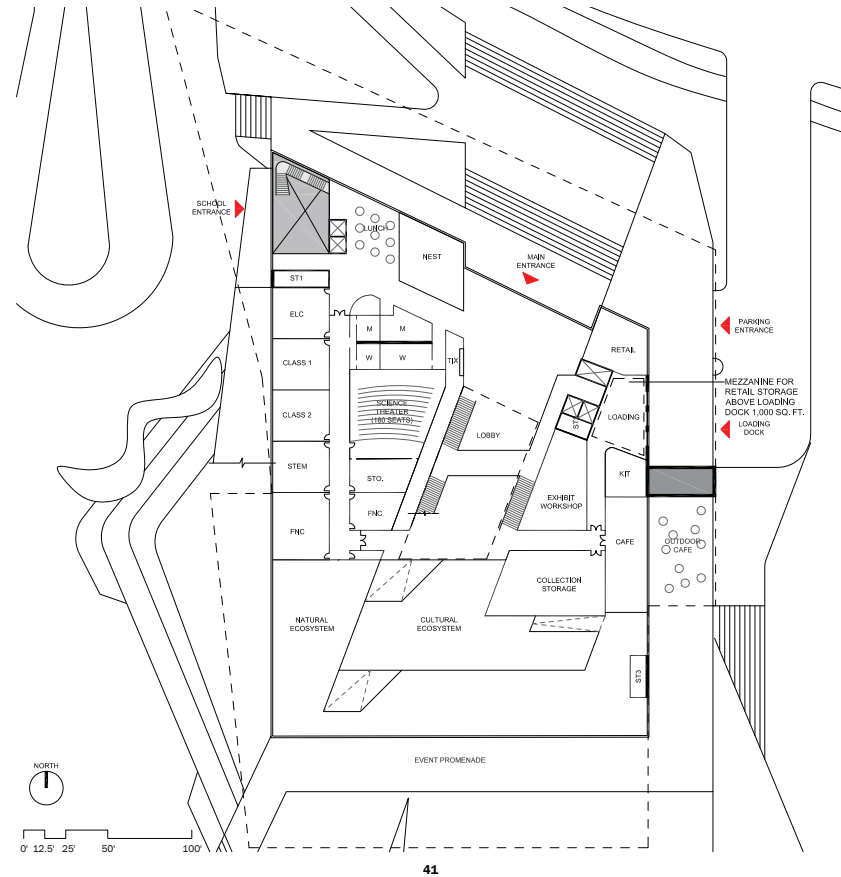
DLR Group

Responsibilities:

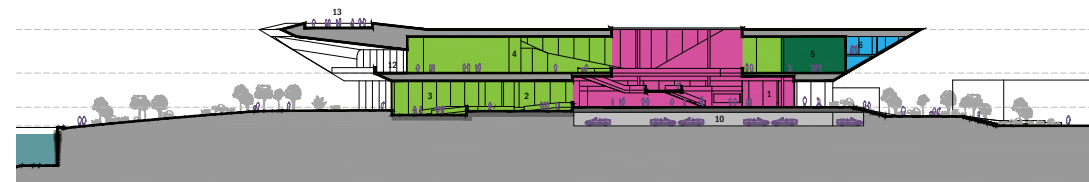
- Conceptual Design and Program Layout
- Digital Modeling
- Graphics
- Competition booklet content organization

The Museum of Science and History in Jacksonville Florida was a design competition that DLR Group won and is now in the SD phase of design. The scope of the project is to design a new facility for the museum to house its growing collection across the St. Johns river from the existing facility. The project program is 130,000 with 80,000 sq.ft. of gallery.





GROUND FLOOR PLAN



BUILDING SECTION









## ***Cornell Arts Complex,*** Joplin Missouri

---

DLR Group

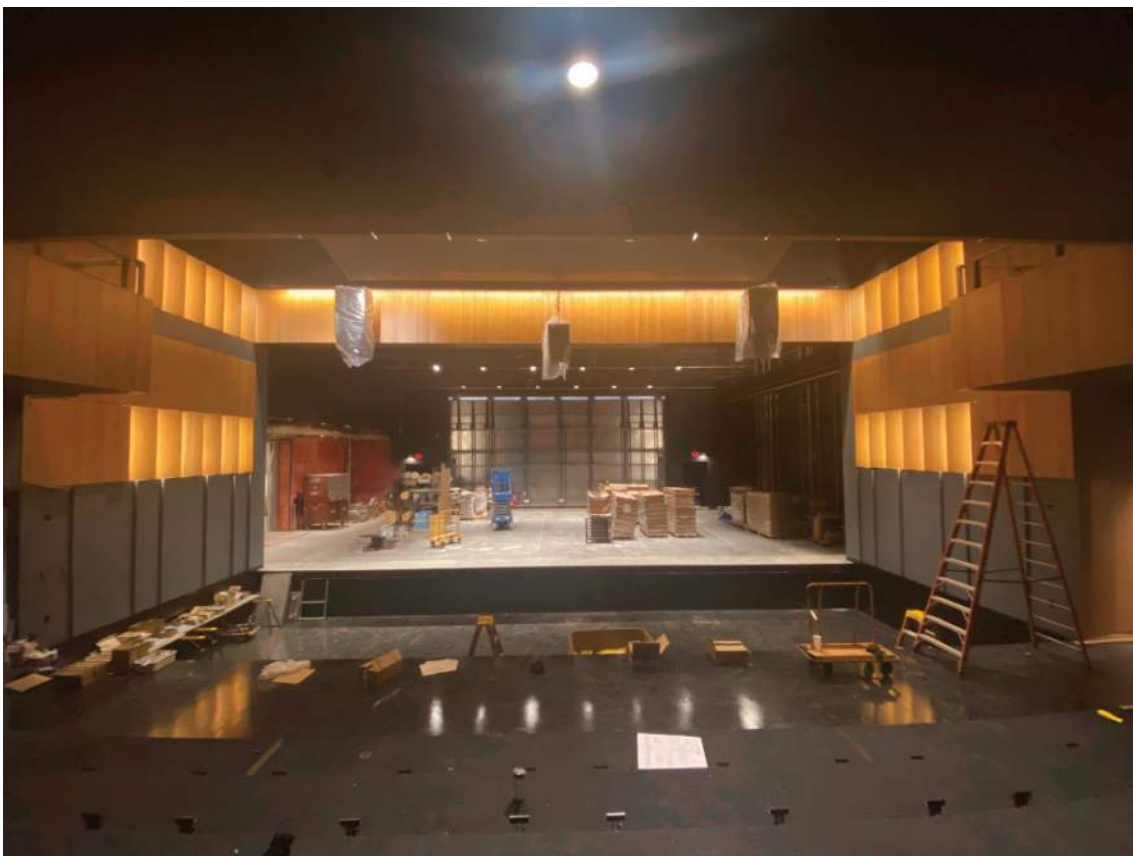
Responsibilities:

- Construction Documentation
- Detailing
- Consultant Coordination
- Assist on CA phase

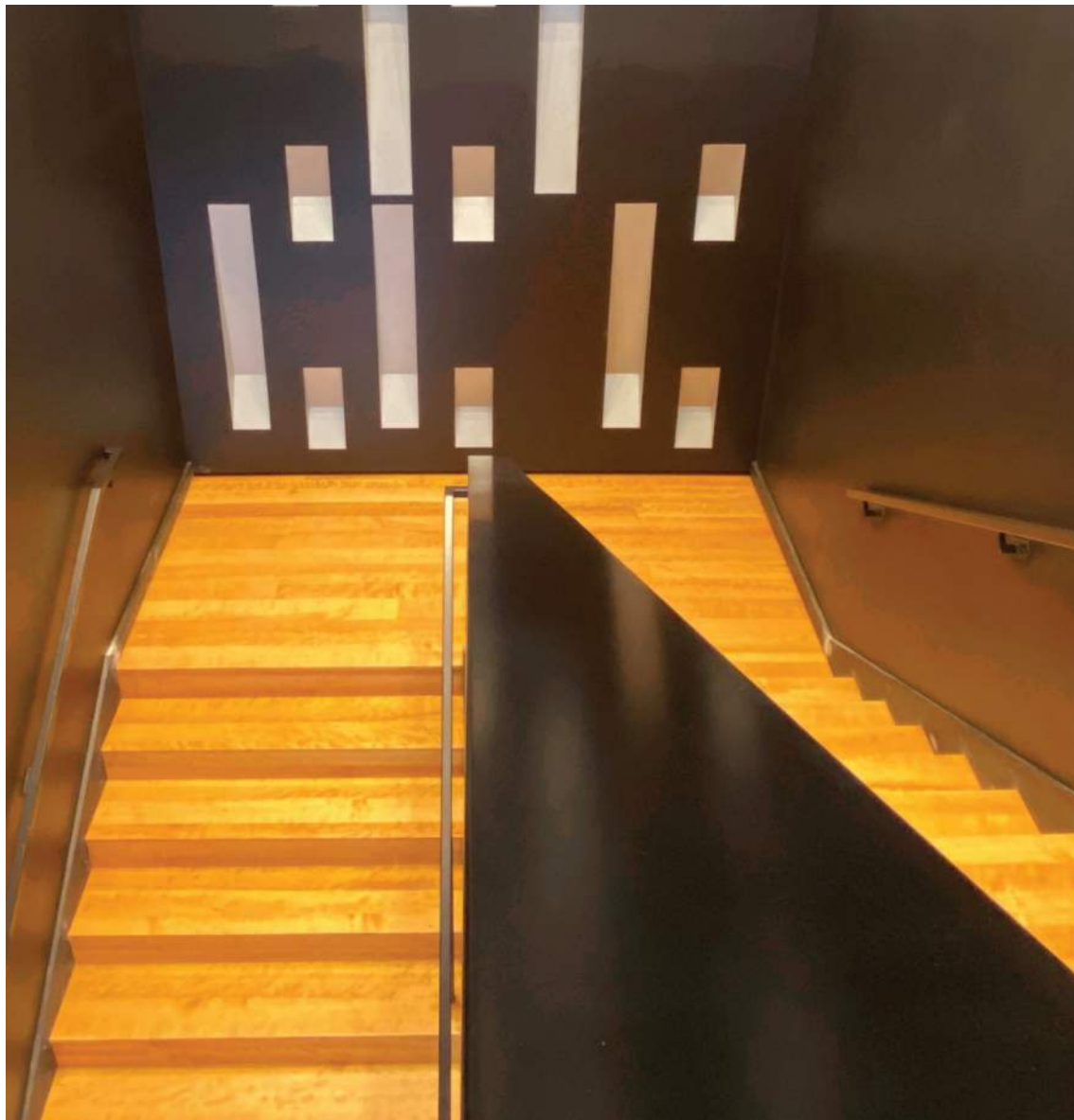
The Cornell Performing Arts Center is a 120,000 sq.ft ground up performing arts center that will serve as a cultural hub for the city of Joplin Missouri. It has one main performance hall on the ground level as well as gallery space on the upper level. The main stage of the performance venue is backed by a hangar door that can open to an outdoor amphitheater to make the stage useable for both indoor and outdoor performances.















## ***Tavares Library***, Taveres Florida

---

DLR Group

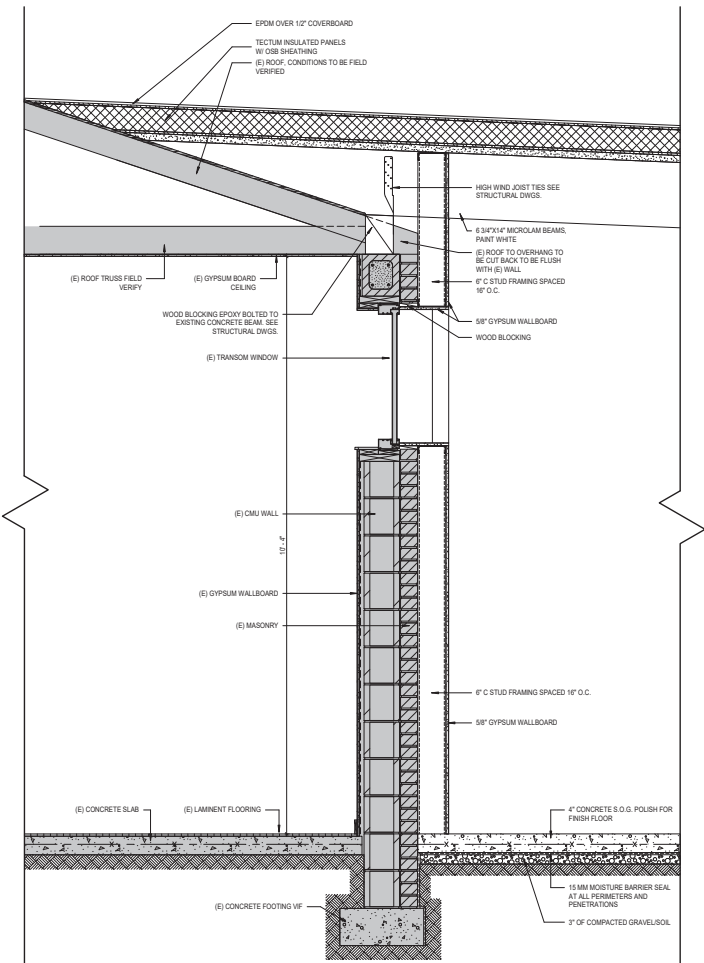
Responsibilities:

- Construction Documentation
- Detailing
- Consultant Coordination
- Assist on CA phase

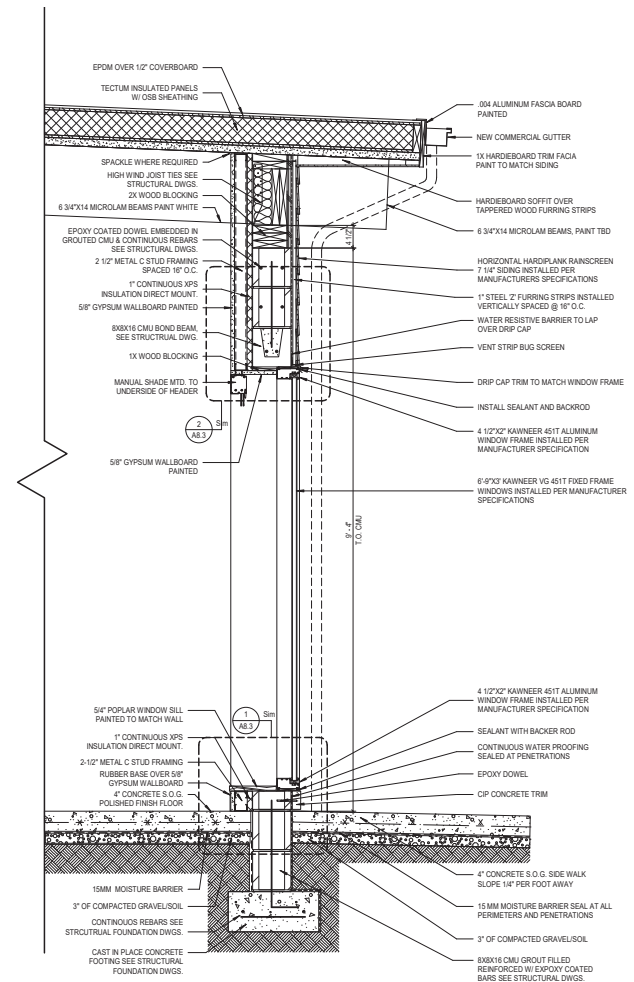
The Tavares Library project was phase one of a larger plan that DLR had developed to transform the campus of the existing Tavares Library structure. The addition that was designed and constructed is a youth center that is used to enhance the function of the existing library space. It is a 3,000 sq.ft. and offers the youth of Tavares a space to come and study as well as gather for social events through its flexible space programing.







WAL SECTION, EXISTING TO NEW CONSTRUCTION



WALL SECTION NEW CONSTRUCTION









## ***Professional,*** PVE LLC

---

PVE LLC

### Responsibilities

- Project Management
- CD document creation
- Technical Design Solutions
- CA services

Projects that I have been heavily involved in or managed at PVE . These are typically architectural or structural projects on existing buildings that vary in scope. The work I have done includes; facade restoration, preservation of historic features for LPC, ADA and Egress code analysis, interior renovations, and facade visualization for client presentations.



**Project Map**

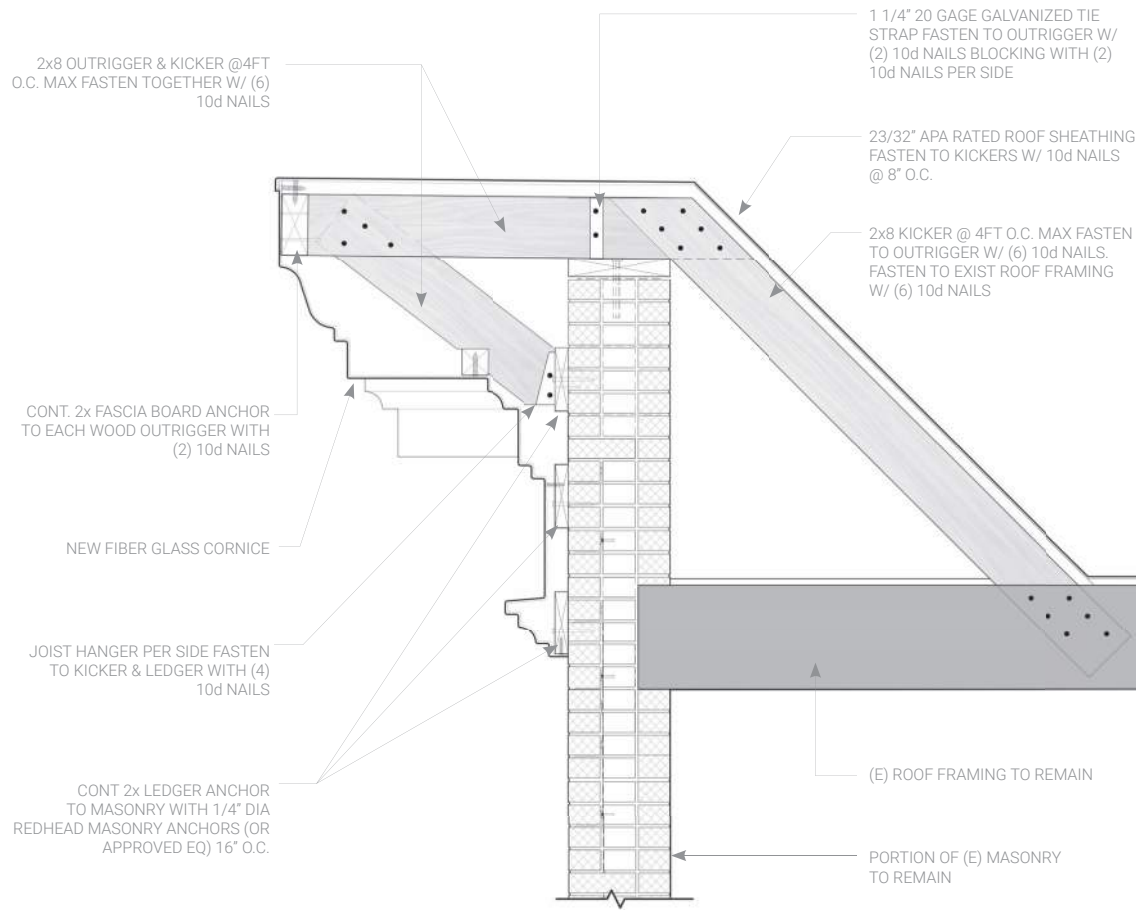


**LL 11** Facade Restoration

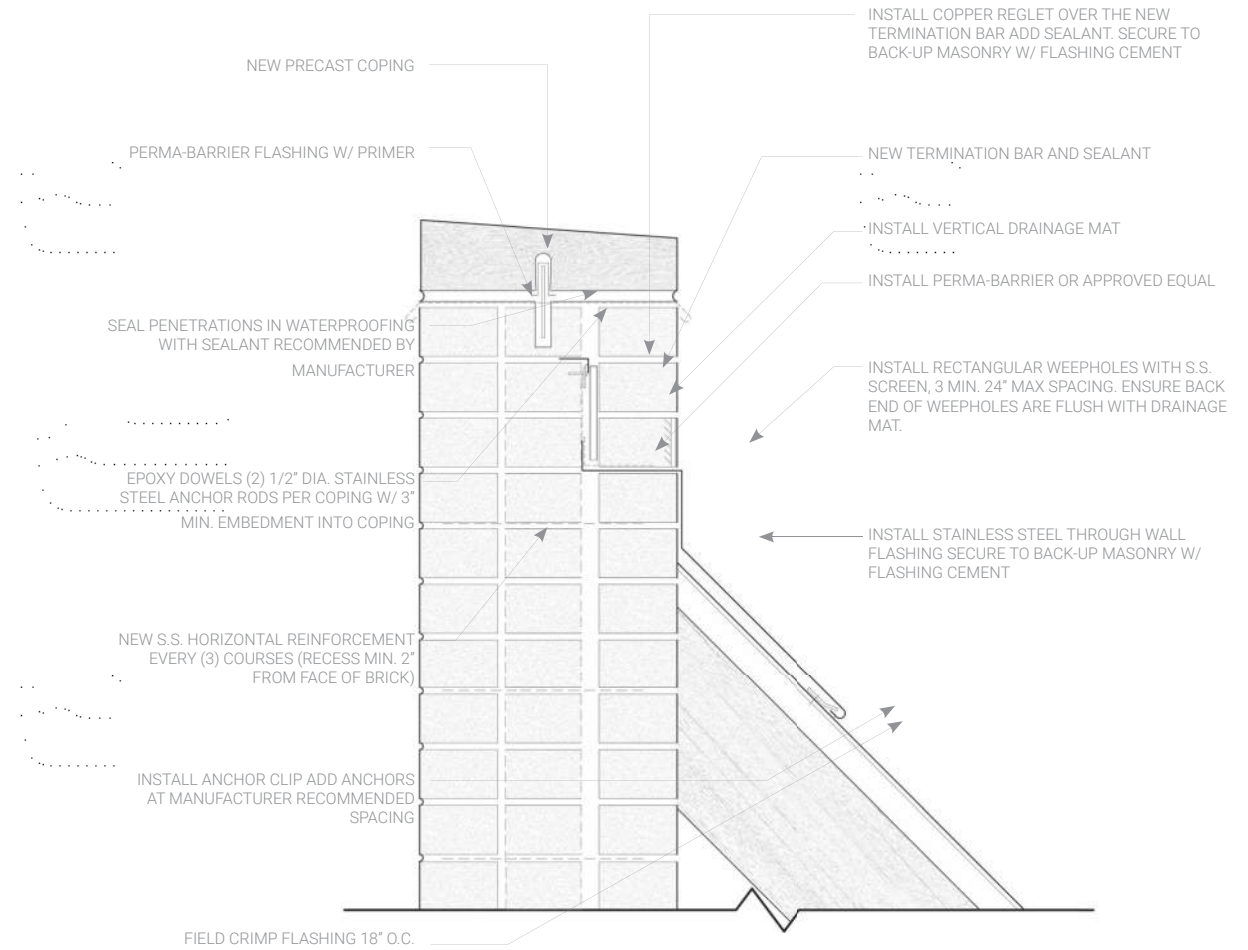
1858 7th Ave, Cornice removal parapet rebuild



FRONT ELEVATION



REPLACE CORNICE DETAIL



REMOVE CORNICE DETAIL

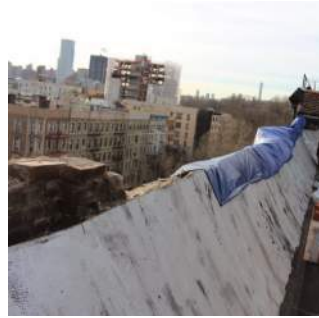




ORIGINAL CORNICE



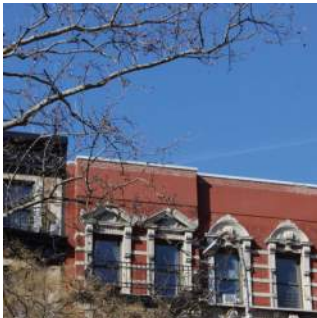
PROBE TO DETERMINE  
FRAMING



REMOVAL OF CORNICE



PARAPET AFTER CORNICE  
REMOVAL



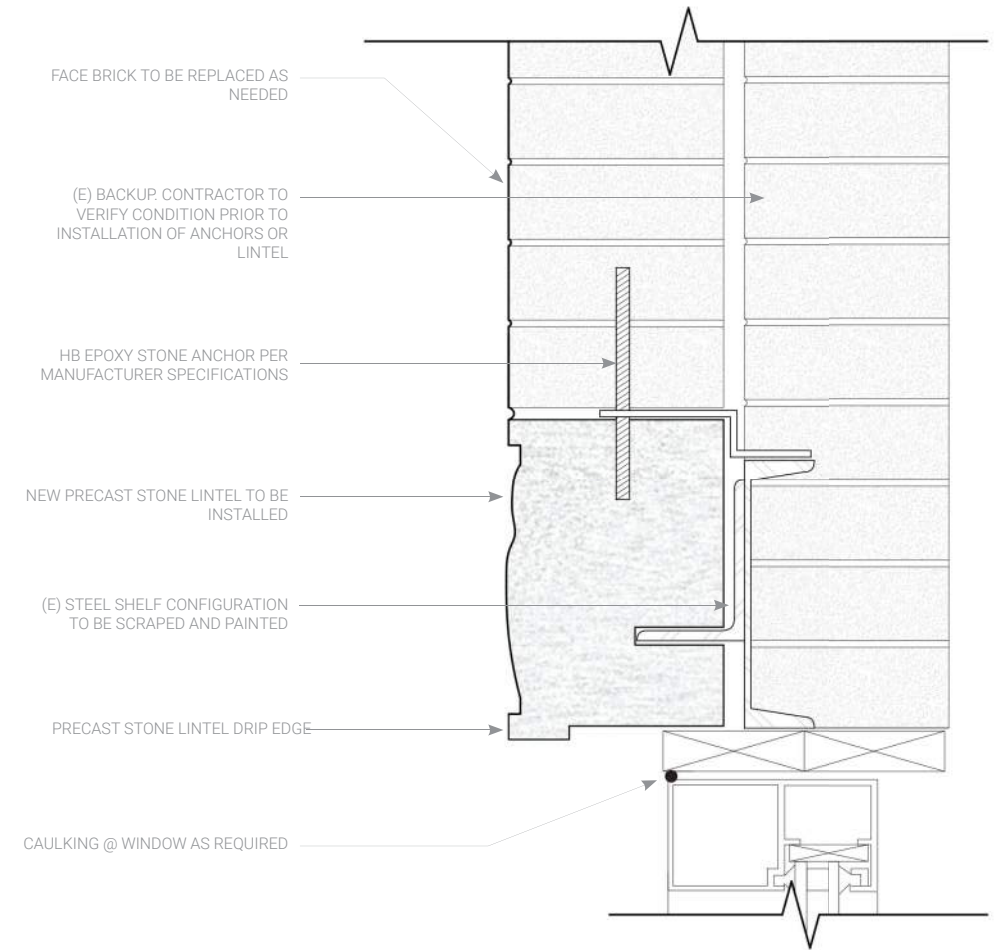
PARAPET REBUILD



NEW PARAPET COPING AND  
FLASHING

## LL 11 Facade Restoration

330 Wadsworth Avenue, Decorative terra-cotta lintel replacement



DECORATIVE PRECAST LINTEL REPLACEMENT



DEFECTIVE TERRA-COTTA LINTEL



DEFECTIVE DECORATIVE TERRA-COTTA WINDOW TRIM



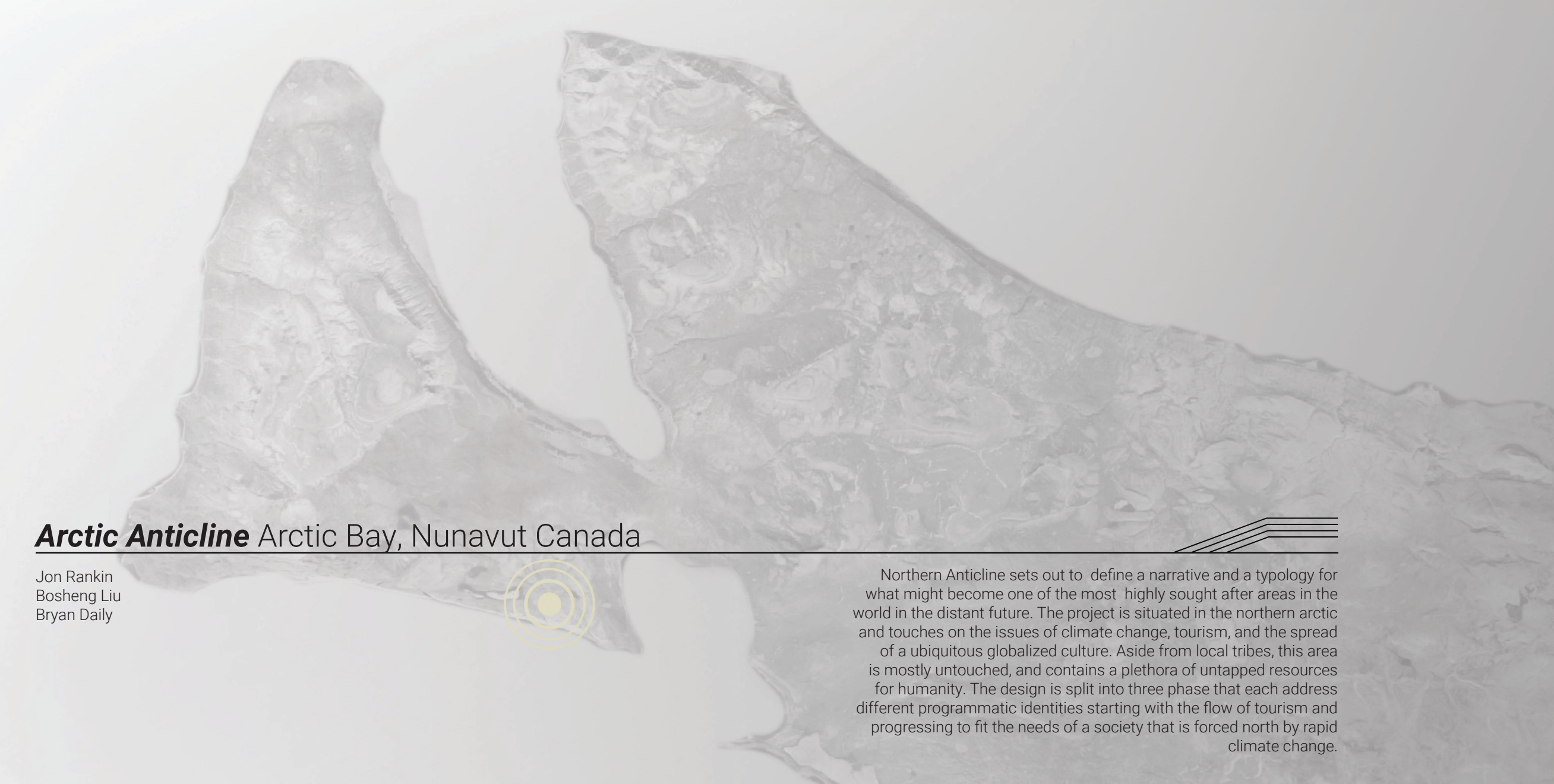
PRECAST LINTEL REPLACEMENT



DECORATIVE PRECAST LINTEL TRIM








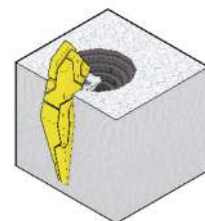
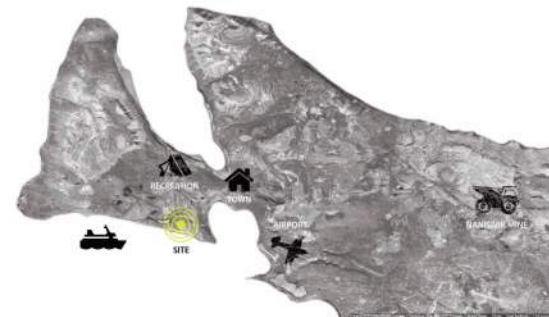
## ***Arctic Anticline*** Arctic Bay, Nunavut Canada

Jon Rankin  
Bosheng Liu  
Bryan Daily

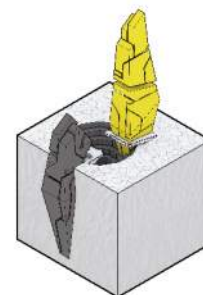


Northern Anticline sets out to define a narrative and a typology for what might become one of the most highly sought after areas in the world in the distant future. The project is situated in the northern arctic and touches on the issues of climate change, tourism, and the spread of a ubiquitous globalized culture. Aside from local tribes, this area is mostly untouched, and contains a plethora of untapped resources for humanity. The design is split into three phase that each address different programmatic identities starting with the flow of tourism and progressing to fit the needs of a society that is forced north by rapid climate change.

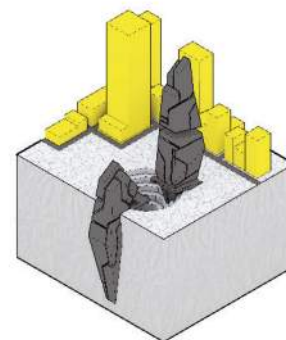




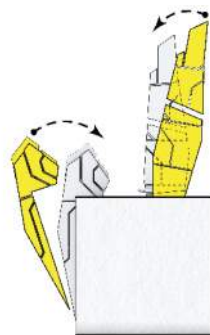
Phase 01



Phase 02



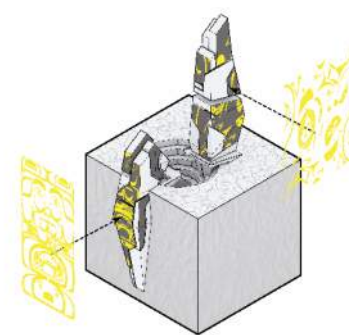
Phase 03



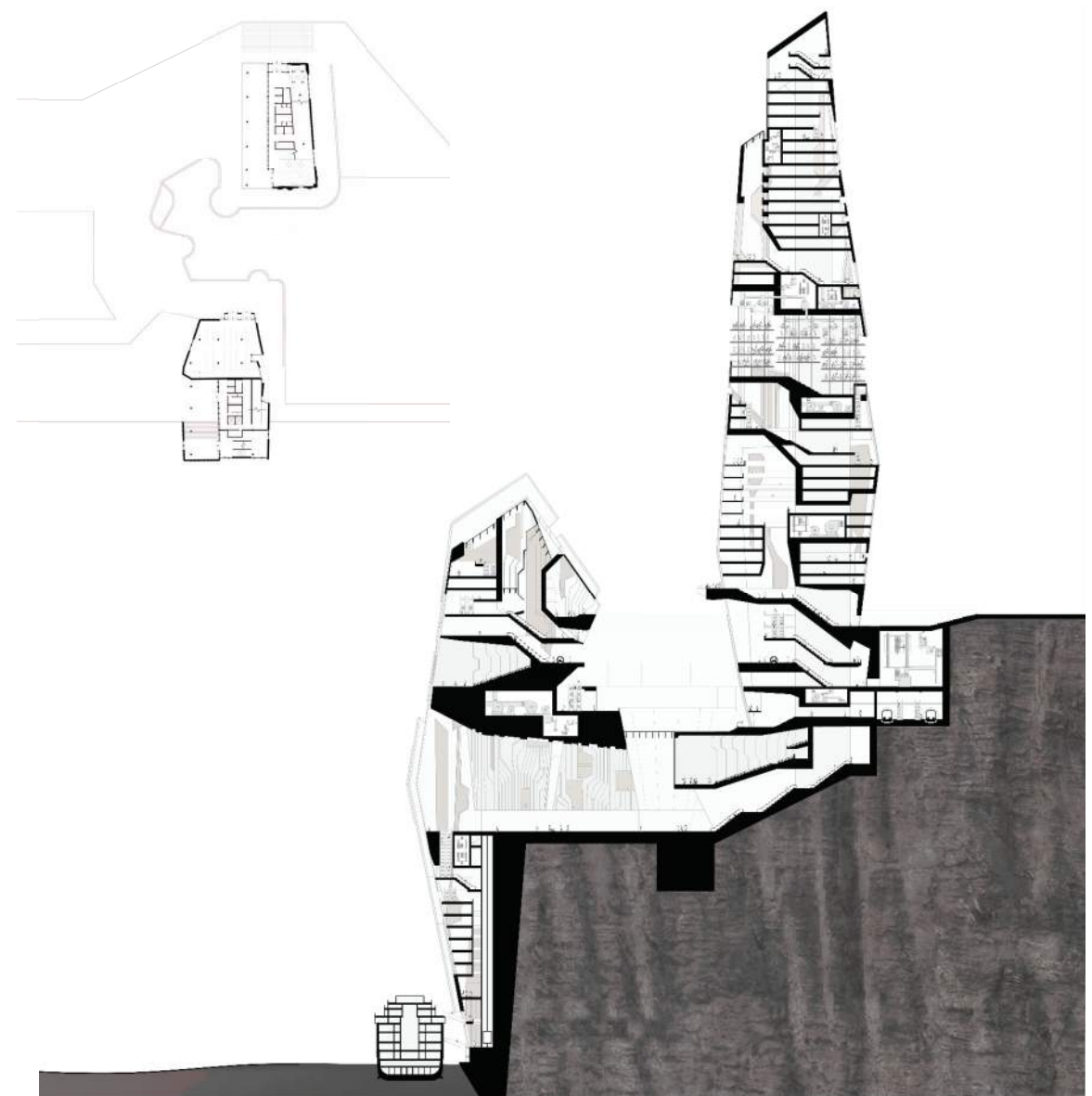
Clipping



Vertical Farming



Tattoo







## ***D|Evolution***

---

Jon Rankin  
Jonathan Visgaitis  
Hugh Patton  
Julien Remi Bach Nguyen (water color credit)  
Gerald Hopper



Both architecture and fashion fused to design a gown that was focused on bio-imitation. Inspiration from the cassowary bird is used in order to generate a mixture of scale fractal patterning, along with spike and feather motifs. A combination of digital fabrication and traditional techniques are used in order to assemble the dress. The scales are 3D printed directly on the fabric while printed spikes are connected via a shoulder pad.







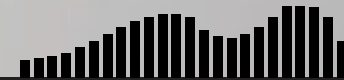


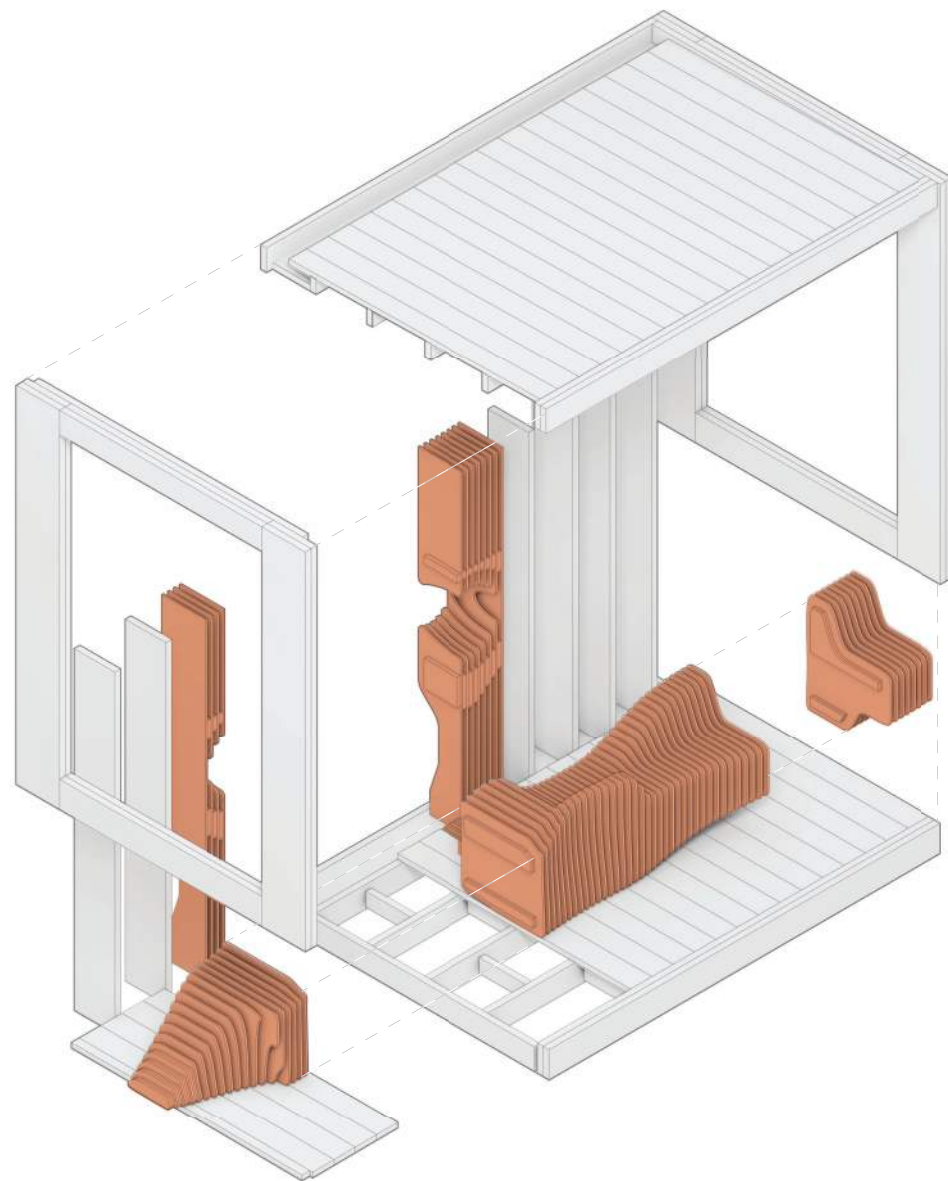
## ***Solar Charging Station,*** Kent Ohio

---

Jon Rankin  
Zach Butler (photo credit)  
Alex Petruso  
Jonathan Visgaitis  
Alexis Dorko  
Jansen Meals

The Solar Charging Station is a small pavilion designed for allowing users to charge their electronic devices while waiting for public transportation. The soft curves of the bench are created from CNC milled birch plywood that is connected with wooden spacers. These spacers create a unique profile when observed from straight on, and are placed to prevent users from dropping their devices between the slats of the bench. Solar panels on the roof provide power to a battery hidden in the bench. Charging ports and cables emerge from the slats in the bench.









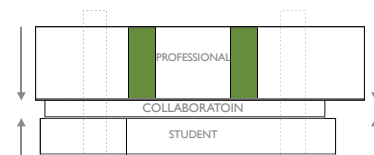
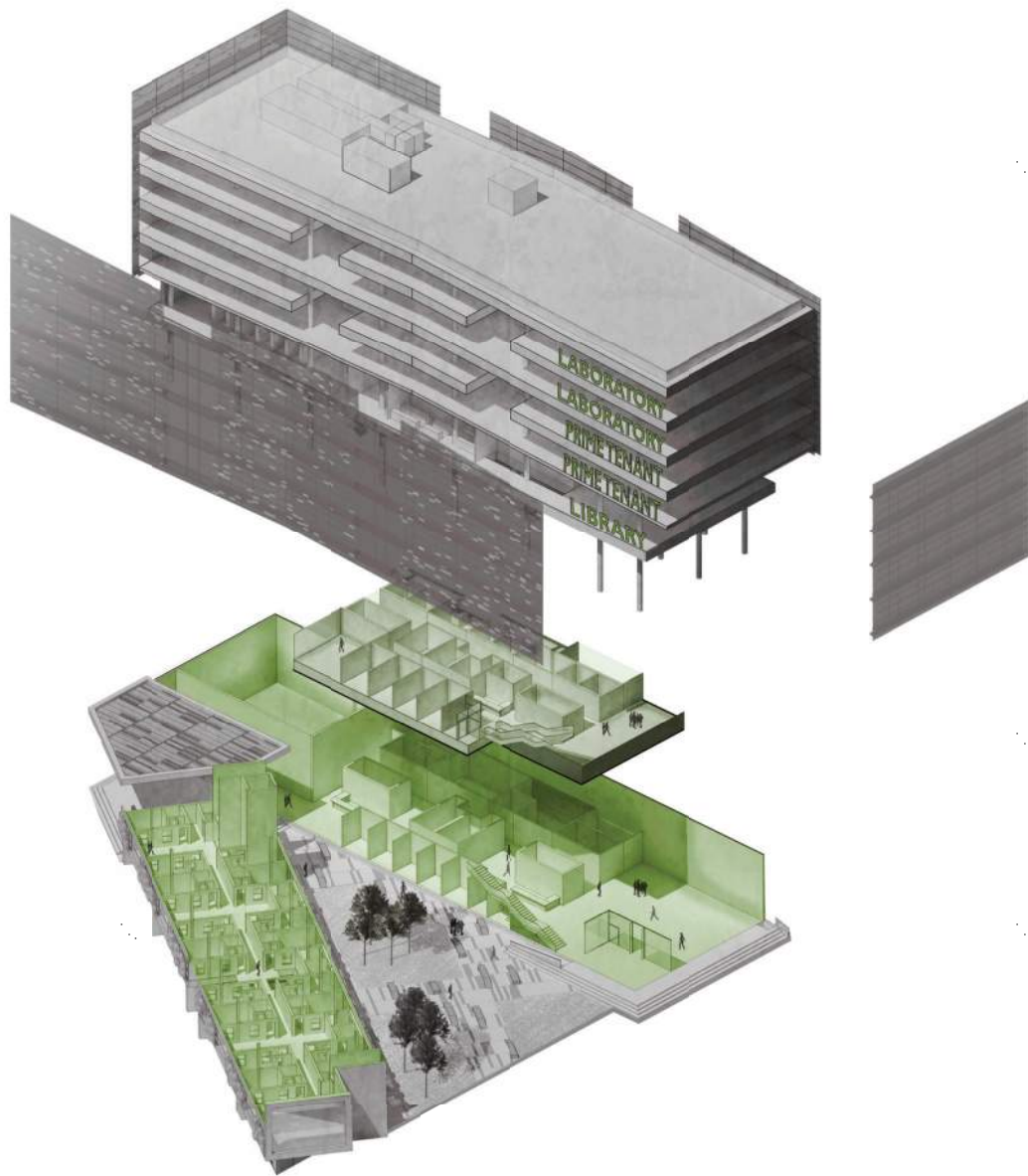


# **Co-Lab** Hafencity, Germany

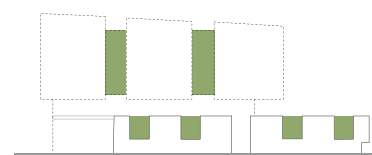
Jon Rankin  
Justin Gleason

Co-Lab is a collaborative work environment, with a focus on geo-engineering, that is directed toward students attending Hafencity University and professionals in the area. The project is heavily driven by sustainability, and uses many passive and active strategies to achieve the goals of the Living Building challenge. Forms are derived from the local perimeter block vernacular, as well as radiation analysis. The building is split into university function on the lower floors, professional offices on the top floors, and a collaborative space in the middle.

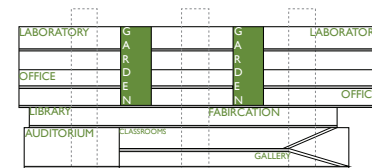




CONCEPT



VERTICAL GARDENS



PROGRAM



SECTIONS



ELEVATIONS



