

# PAULA FASTUCA

interior design academic portfolio

MFA-1 | 2023 | NEW YORK SCHOOL OF INTERIOR DESIGN

---

## projects

- 1 Equilibrium: Eating Disorder Treatment Center
- 2 The Sedge Wren Hotel Public Spaces and Executive Suite
- 3 Love in Meadows Conceptual Retail Store
- 4 World Wildlife Fund NYC Headquarters
- 5 A Chef's Custom Kitchen

# Equilibrium

**OBJECTIVE** Eating Disorder Treatment Center  
**LOCATION** Greenport, NY  
**TYPE** Healthcare Center  
**AREA** 10000 sq ft

**What We Treat:** Eating Disorders including anorexia, bulimia, binge eating disorder, compulsive over eating and other eating disorder behaviors and body image issues.

**Who We Treat:** Women, men, LGBTQ+ and adolescents

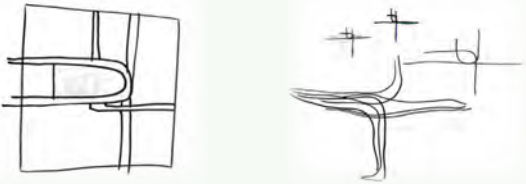
**Treatment:** Variety of therapy treatment programs to customized to personal needs. Focus to develop a neutral and peaceful relationship with food offering an integrative treatment approach.

**Design Philosophy:** Elements that favor comfort and healing through neutral colors, minimal design, balance and psychology of natural light and use of color along with views of nature.

**Design Goal:** Design a space that develops a positive attachment through elements of healing, strength in character and change. An atmosphere of warmth, the comfort of home and collaborating with nature.

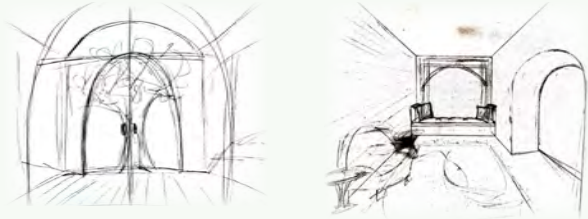
Equilibrium: Eating Disorder Treatment Center					
Program					
Zone	Type	Area Size	Quantity	Total	
Entrance	Public	Active	384 sqft	1	384
Reception/Lounge	Public	Active	825 sqft	1	825
Circulation (flexible)	Public	Active	1,756 sqft		1,756
Courtyard	Semi-Public	Active	1,200 sqft	1	1,200
Storage/Supply Room	Semi-Public	Active	128 sqft	2	128
Individual Therapy	Private	Active	240 sqft	3	720
Group Therapy Room	Private	Quiet	288 sqft	1	288
Staff Breakroom w/ Kitchen	Private	Active	288 sqft	1	288
Individual Restroom	Private	Active	56 sqft	2	112
Medical Exam Rooms	Private	Active	144 sqft	2	288
Dietitian Counseling w/ kitchenette	Private	Quiet	432 sqft	1	432
Restroom	Private	Quiet	220 sqft	1	220
Staff/Administration Office	Semi-Private	Quiet	800 sqft	1	800
Group Yoga/Meditation Room/Locker	Semi-Private	Quiet	1,040 sqft	1	1,040
Family/Mentor Group Therapy Room	Semi-Private	Active	1,000 sqft	1	1,000
					9,097

PART I

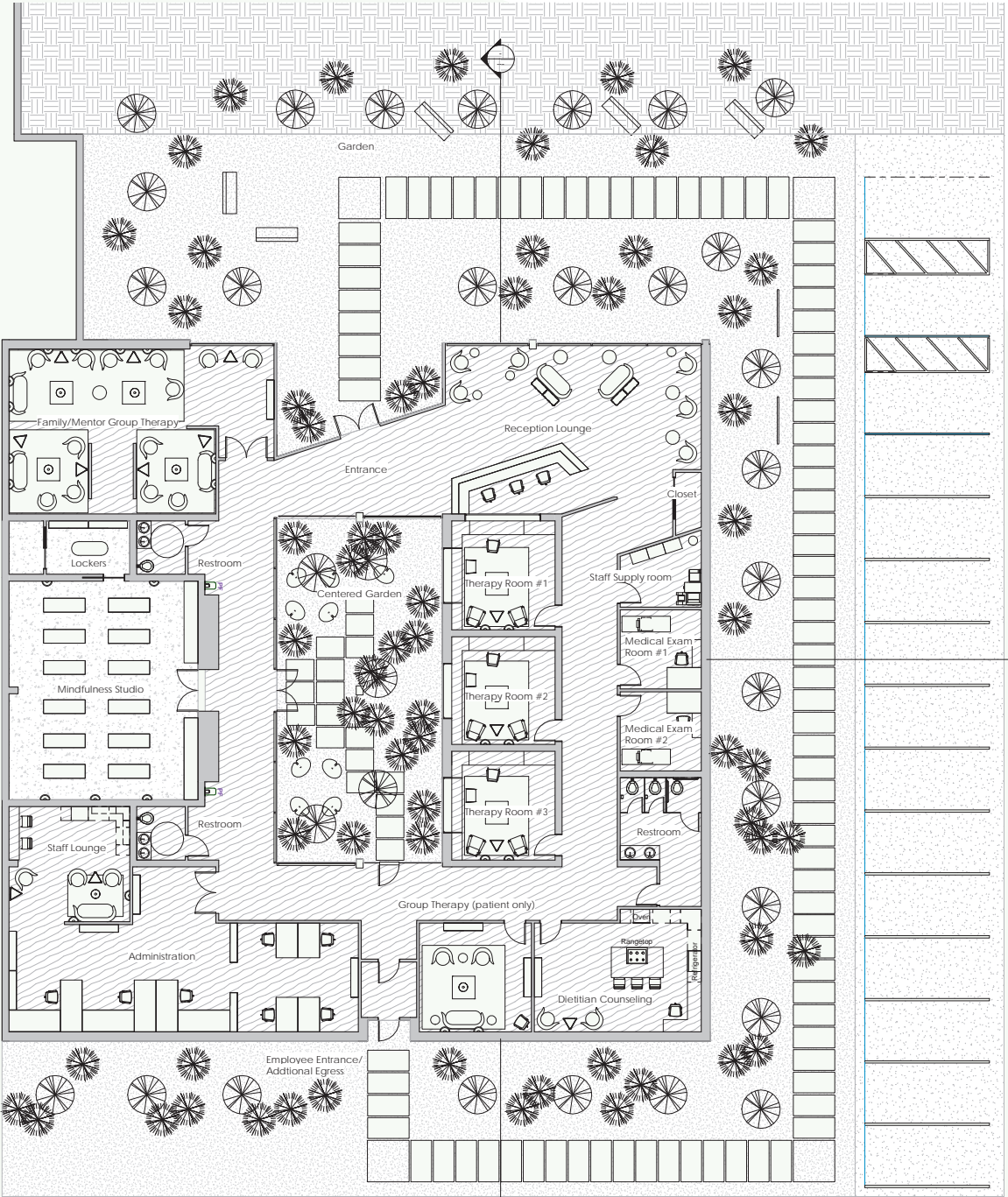
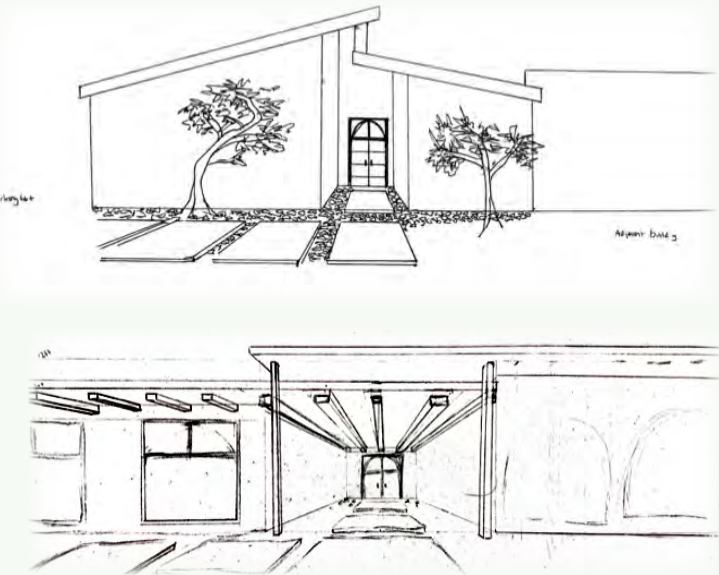


BALANCE | TENSION | HARMONY

PRELIMINARY SKETCHES



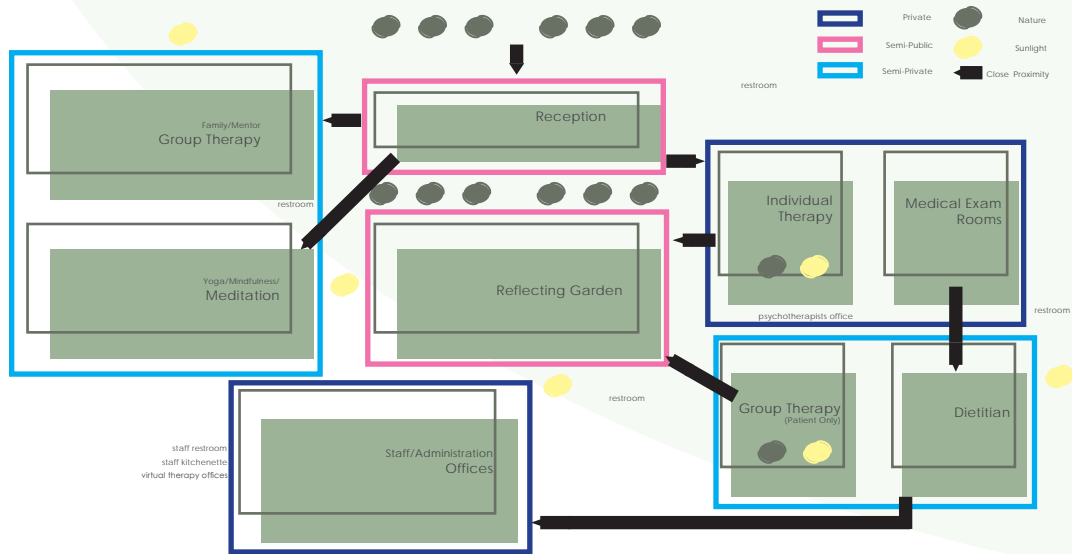
EXTERIOR SKETCHES



FLOOR PLAN

0 5 10 20 50  
SCALE BAR 1:250

Adjacency Diagram



SECTION PERSPECTIVE





PRIVATE THERAPY ROOM



7



8



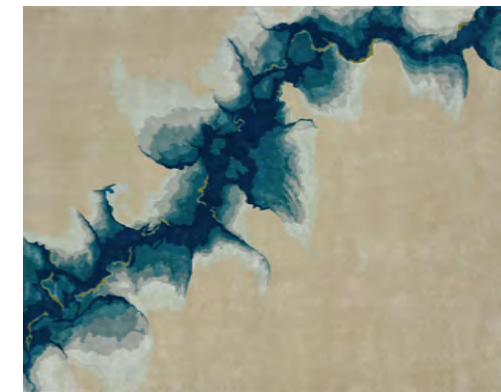
3



9



10



11

- 7 HANNAH POLSKIN GENUFLEXION 7
- 8 HIGHTOWER ORIENT PENDANT
- 9 HIGHTOWER BRASILIA TABLE
- 10 HIGHTOWER PROTO LOWBACK CHAIR
- 11 COLBOURNS KRAKEN RUG



1



2



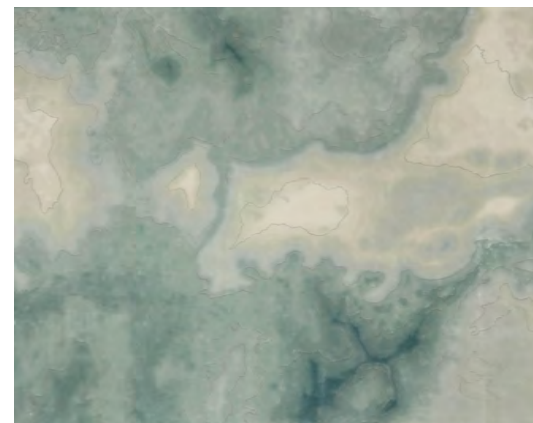
4



3



5



6

- 1 HANNAH POLSKIN BURL TRIPTYCH 2
- 2 HIGHTOWER SUSPENSE PENDANT
- 3 RUBY ATELIER VASE
- 4 HIGHTOWER ZIGGY TABLE
- 5 HIGHTOWER SELECT RECLINER
- 6 COLBOURNS SKYE RUG

GROUP THERAPY ROOM



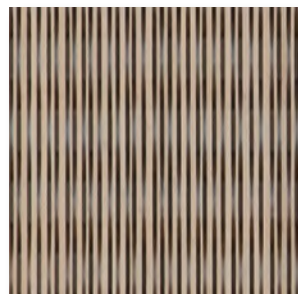




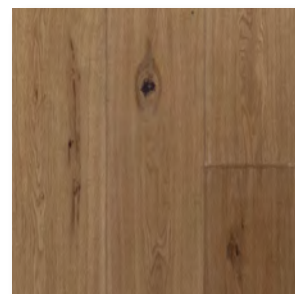
RECEPTION



Texston  
Sage Plaster



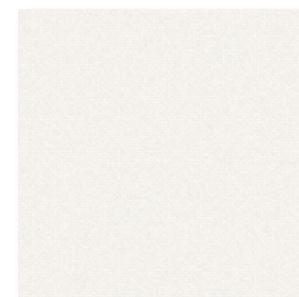
Plyboo Acoustic  
Linear Collection



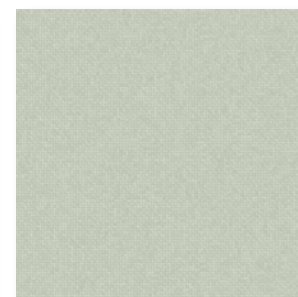
SoundPLY  
Oak Slat Wall Detailing



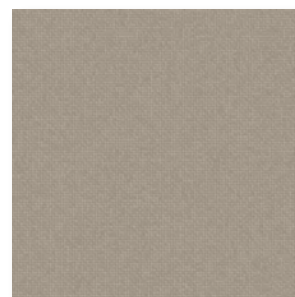
Tarkett  
Cork Flooring



Designtex  
Sofa Upholstery



Designtex  
Chair Upholstery



Designtex  
Chair Upholstery



Mannington  
Light Oak Plank Flooring

MINDFULNESS STUDIO





# The Sedge Wren

**OBJECTIVE** Adaptive Use of an Historic Building

**TYPE** Hospitality

**LOCATION** Montreal, Canada

**AREA** 15000 sq ft



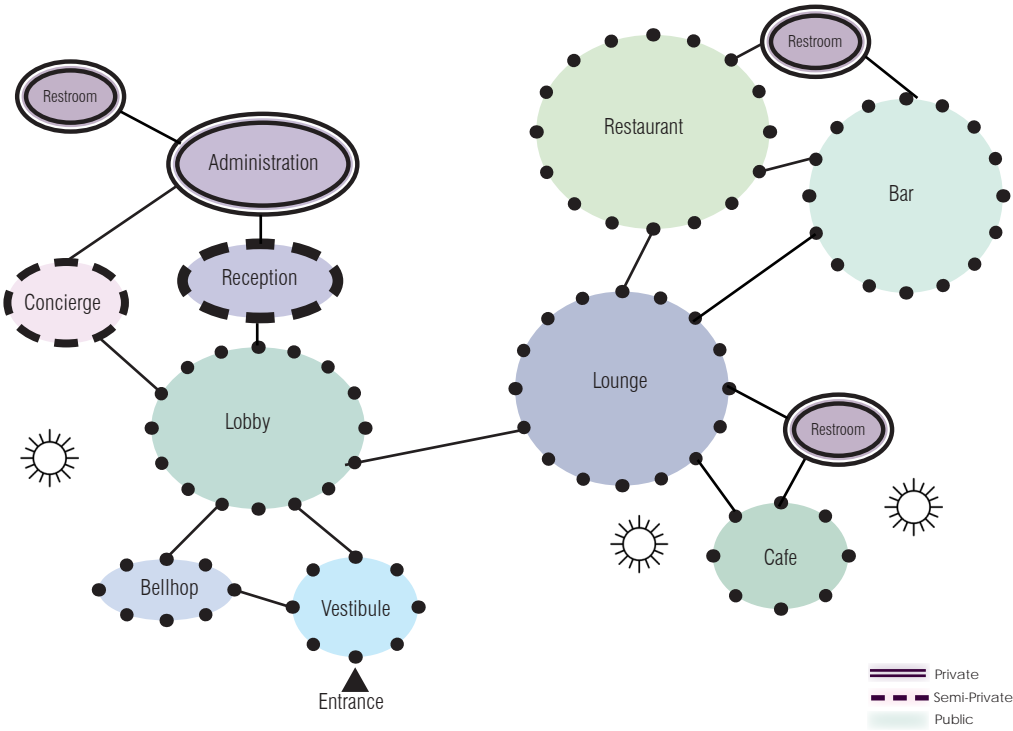
**Concept**

Harmonizing Montreal’s night skyline with the magic of Canada’s starry night, inspiration draws from celestial shades of purple and reflecting light to transform guests while complementing the city’s rich artistic history.

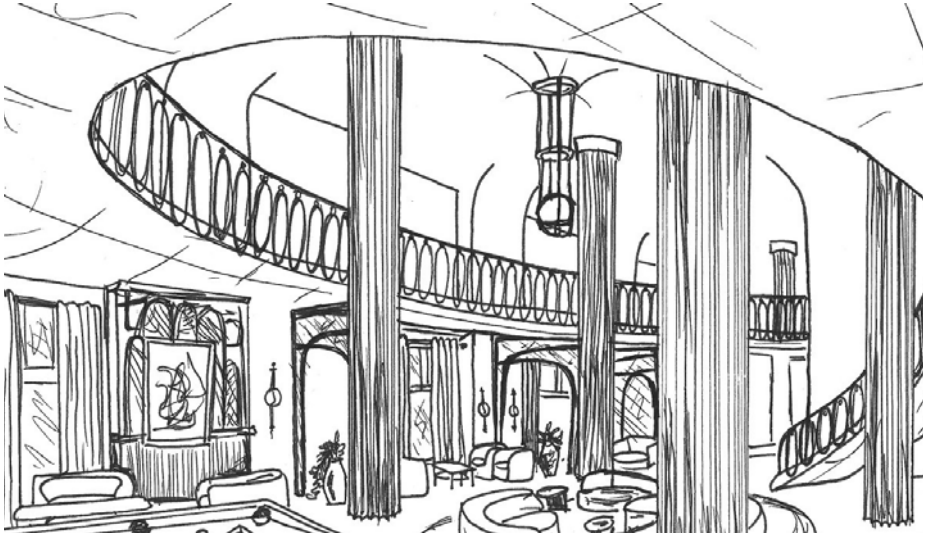
- Concordia Salus - “Well-Being in Harmony”
- Moody & Enchanting
- Celestial



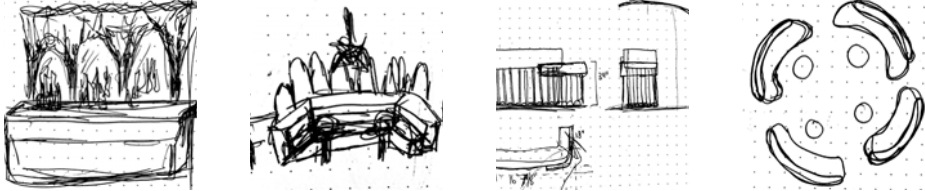
INSPIRATION IMAGES



PERSPECTIVE SKETCHES

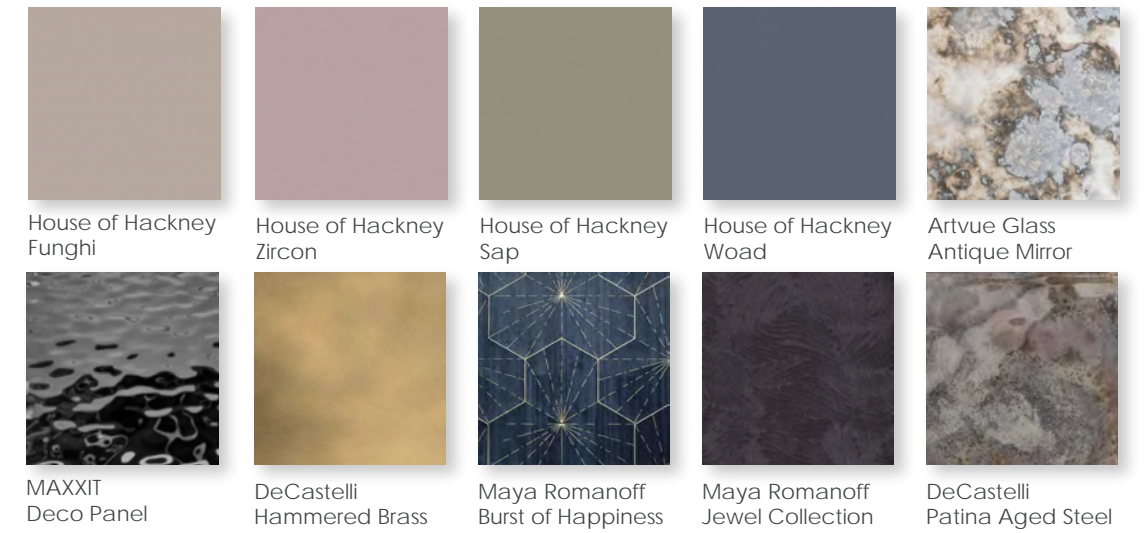
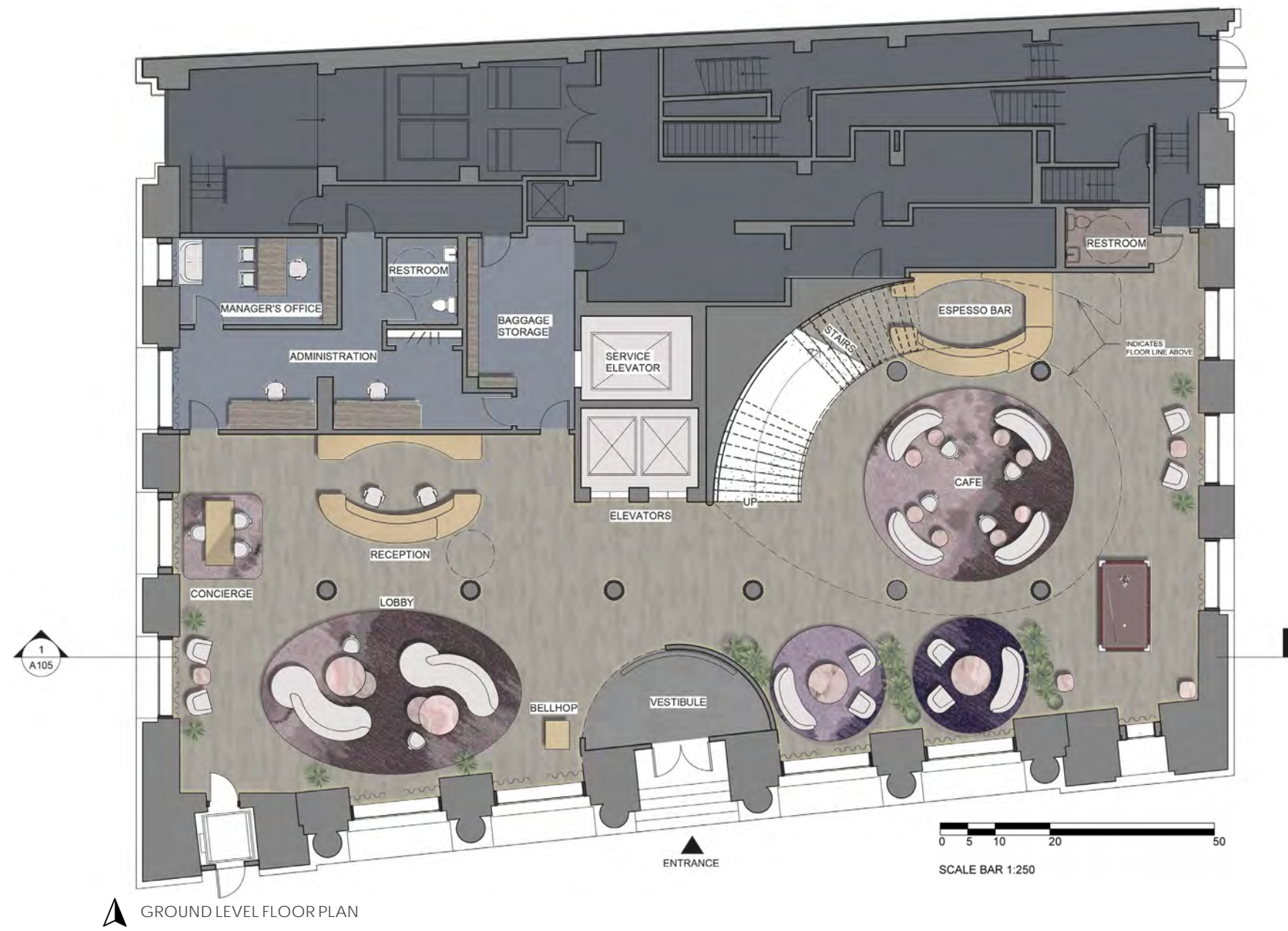


CONCEPT SKETCHES



LOBBY & CAFE PERSPECTIVE

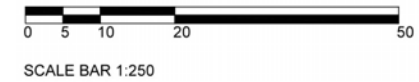








SECOND LEVEL FLOOR PLAN



- 1 CUSTOM RECEPTION DESK
- 2 ENY LEE PARKER LAMP
- 3 NOOM GROPIUS CHAIR PS1
- 4 KAGAN SERPENTINE CURVED SOFA
- 5 MEZZO MULLIGAN BAR CHAIR
- 6 ARTWORK BY SLYVIE ADAMS
- 7 APPARATUS MEDIAN PENDANT
- 8 CUSTOM MEZZO MULLIGAN DINING TABLE
- 9 CUSTOM BANQUETTE
- 10 MEZZO GARNER SCREENS
- 11 THE FUTURE PERFECT MIRRORS



BAR PERSPECTIVE



RESTAURANT PERSPECTIVE



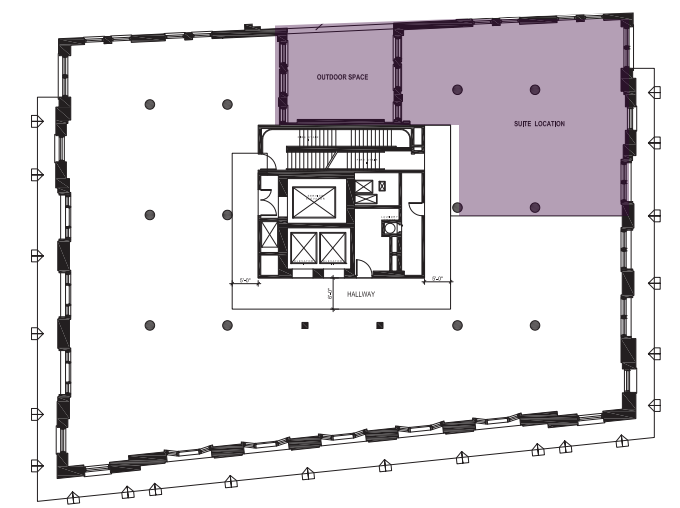
# The Sedge Wren

OBJECTIVE Executive Suite

AREA 2000 sq ft

CONCEPT

The Executive Suite draws inspiration from celestial imagery. Described through materiality and subtle colors seen in the sky. Touches of Art Deco elements morph into a minimalist yet glamorous space.



TERRACE VIEW



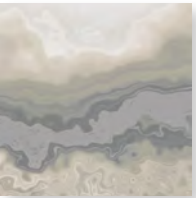
PRIMARY BEDROOM



ENTRY VESTIBULE



Waterworks  
Porcelain Floor Tile



MDC  
Oasis



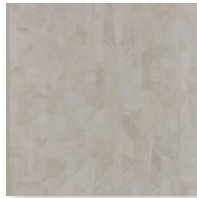
ABC Stone  
Pink Onyx



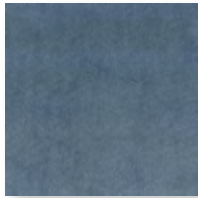
DeCastelli  
Brass



Stone Source  
Imperial



Phillips Jeffries  
Mystic Veneer



Rubelli  
Spritz Azzuro



LIVING SPACE PERSPECTIVE



SECTION PERSPECTIVE



# Love in Meadows

**OBJECTIVE** Retail Concept Store

**TYPE** Retail

**LOCATION** New York, NY

**AREA** 7500 sq ft

## CONCEPT

Love in Meadows is a lifestyle brand designed for those with a dreamy imagination and a love for florals. It is sophisticated, confident, and hopelessly romantic. Offering detail, structure, and femininity at an attainable price endlessly while inspired by vintage treasures.

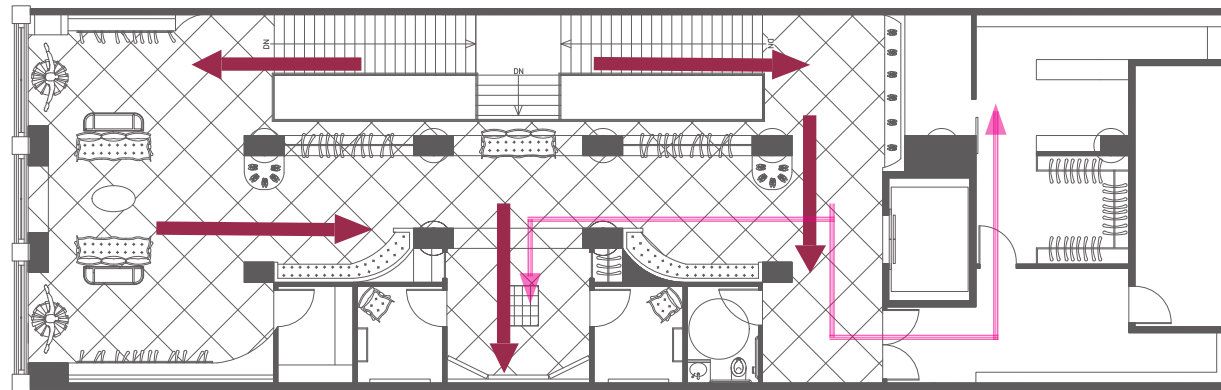
The design concept is inspired by a secret garden in ruins. Inspiration is drawn from Parisian architecture with a Rococo flair.

Materials of limestone, iron, and plaster with soft textiles will describe the setting to support brand identity.

INSPIRATION IMAGES

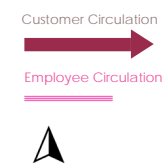


FACADE

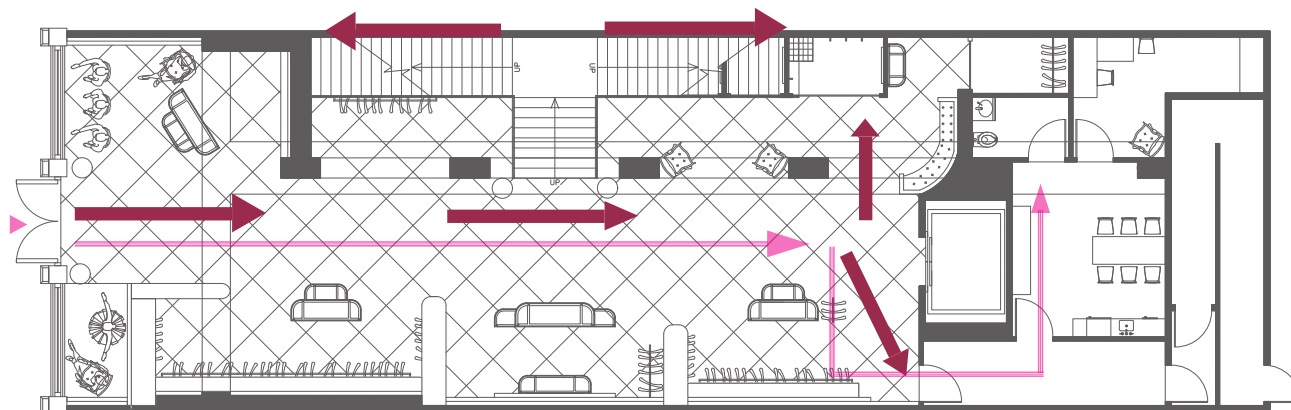
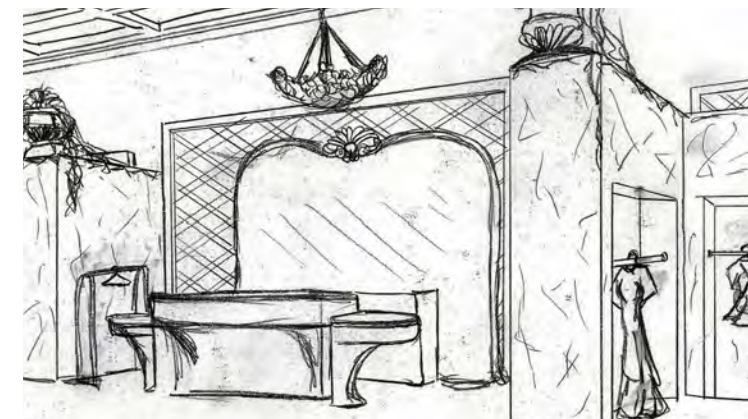


Second Level

Circulation Diagram



DESIGN SKETCHES

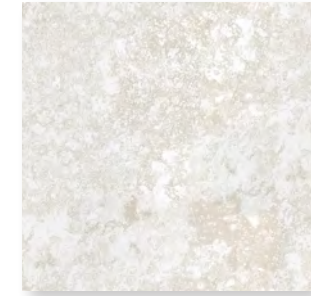
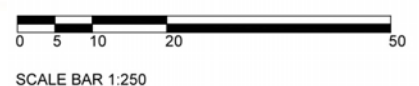


Ground Level





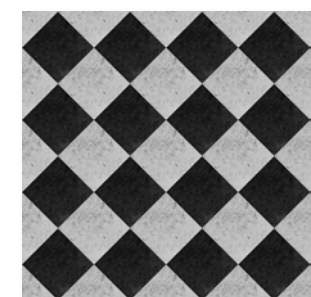
▲ SECOND LEVEL FLOOR PLAN



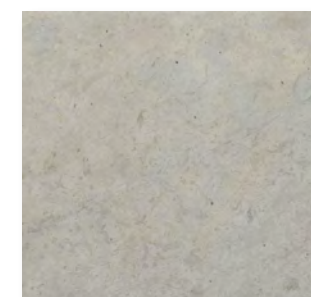
Texston  
Custom Aged Plaster



Texston  
Mauve Plaster



Stone Source  
Honed Checker Floor



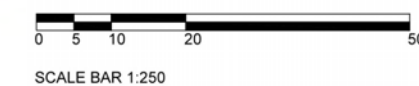
Stone Source  
Honed Concrete



Nourison  
Custom Rug



▲ GROUND LEVEL FLOOR PLAN







CASH WRAP PERSPECTIVE

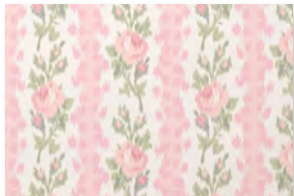


STAIRCASE PERSPECTIVE

*Love in Meadows*  
NEW YORK • PARIS • MELBOURNE



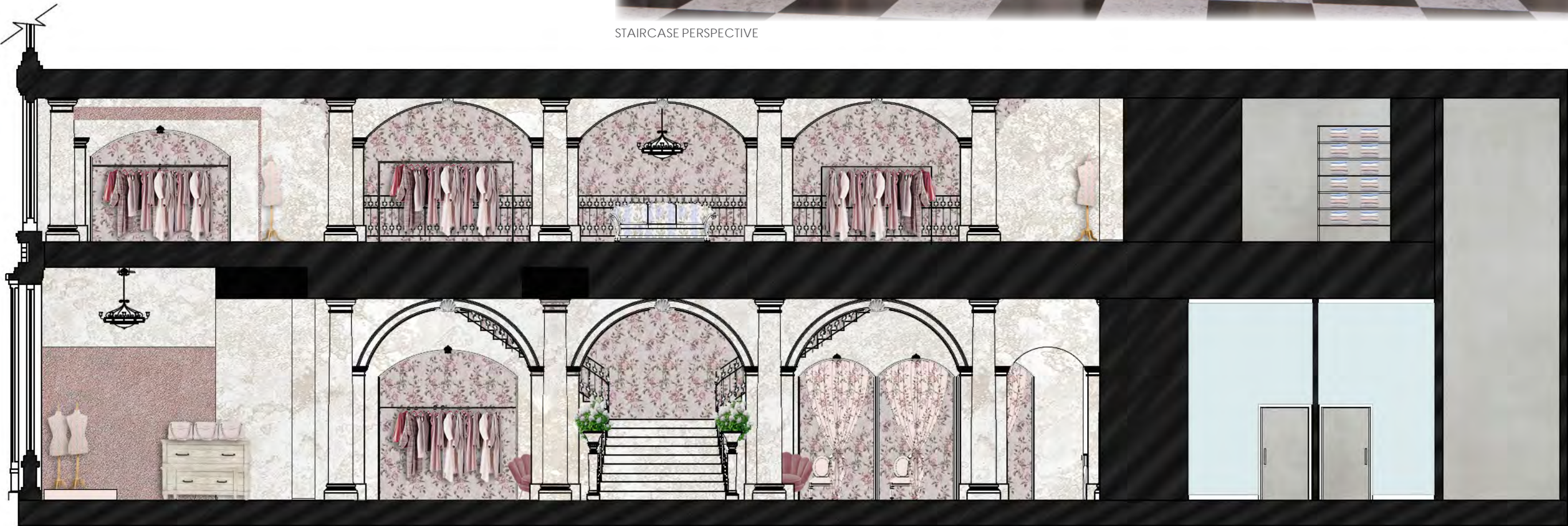
Custom Wallpaper



LIM Floral Textile



LIM Floral Damask  
Textile

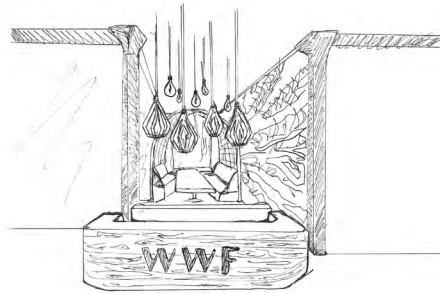


NORTH SECTION ELEVATION



# World Wildlife Fund

**OBJECTIVE** Global Non-Profit Headquarters  
**LOCATION** New York, NY  
**TYPE** Commercial Office Space  
**AREA** 4400 sq ft

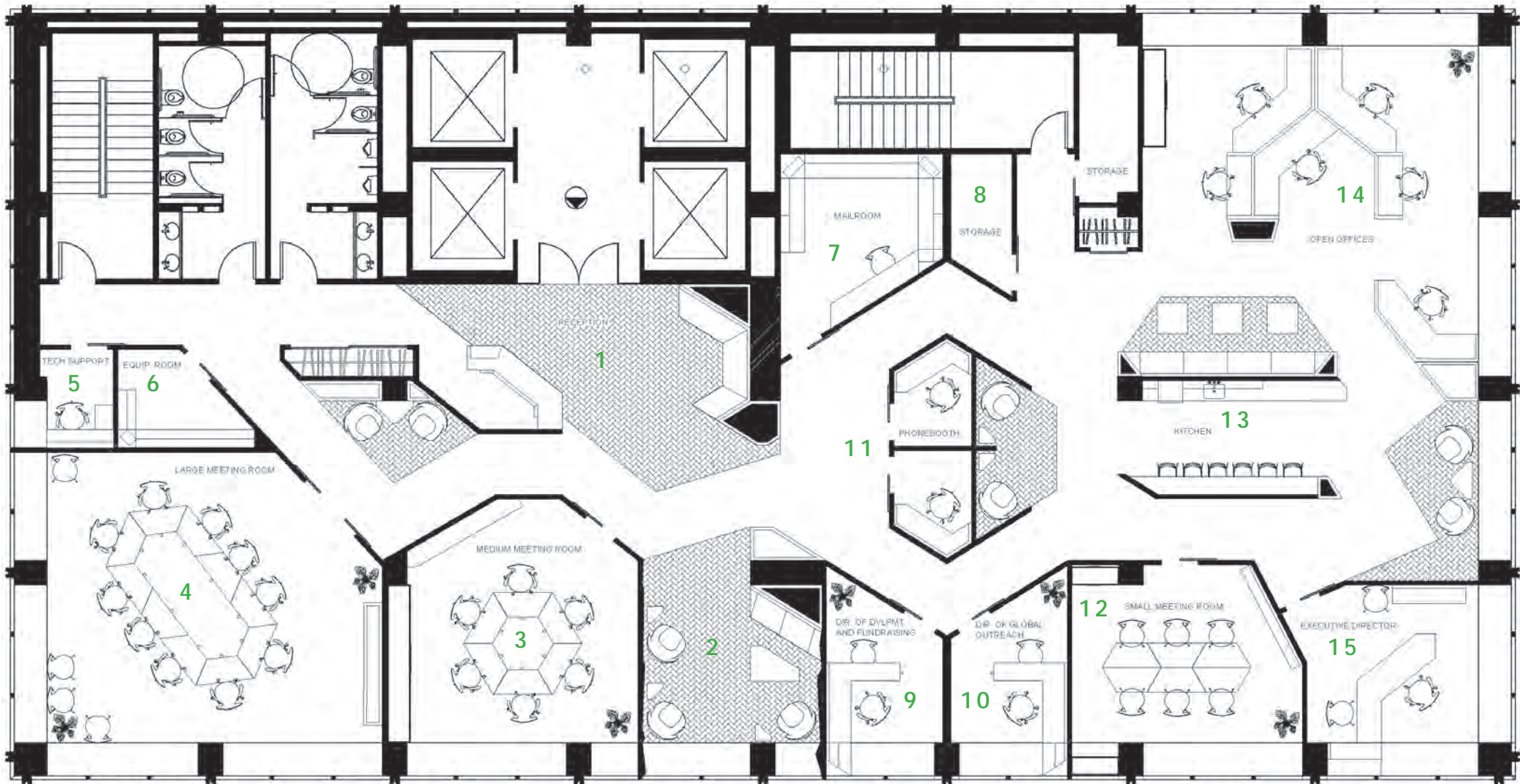


## CONCEPT

Connection through rhythm, allowing the organization to work together to achieve their goals. Earth tones and texture will mimic the habitat of the tiger, an endangered species that WWF has successfully increased in population.



SEMI PUBLIC  
PUBLIC  
PRIVATE



FLOOR PLAN

0 5 10 20 50  
SCALE BAR 1:250

- |                          |                                |                       |
|--------------------------|--------------------------------|-----------------------|
| 1 RECEPTION              | 6 EQUIPMENT ROOM               | 11 PHONE BOOTH        |
| 2 LOUNGE                 | 7 MAIL ROOM                    | 12 SMALL MEETING ROOM |
| 3 MEDIUM CONFERENCE ROOM | 8 STORAGE                      | 13 KITCHEN            |
| 4 LARGE CONFERENCE ROOM  | 9 DIRECTOR OF FUNDRAISERS      | 14 OPEN OFFICES       |
| 5 TECH SUPPORT           | 10 DIRECTOR OF GLOBAL OUTREACH | 15 EXECUTIVE DIRECTOR |



NORTH SECTION ELEVATION



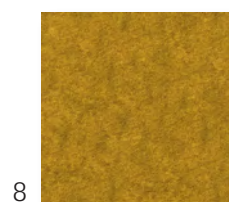
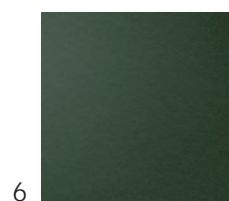
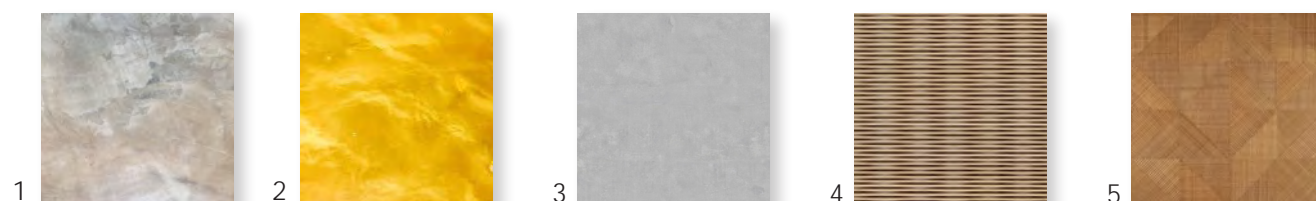


RECEPTION



- 1 EPOXY CONCRETE FLOOR
- 2 YELLOW EPOXY OVER CONCRETE PUBLIC ZONES
- 3 EXISTING CONCRETE FRAME
- 4 PLYBOO SOUND CEILING COLLECTION
- 5 PLYBOO EDGE VENEER WALL PANEL
- 6 MATTE GREEN PAINTED CEILING
- 7 PLYBOO SOUND WALL PANELS
- 8 CONTRACT GRADE MOHAIR

SEMI-PRIVATE OFFICES

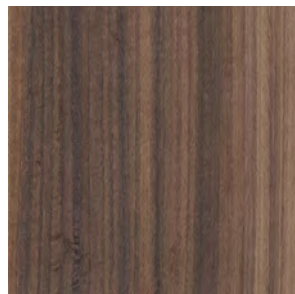
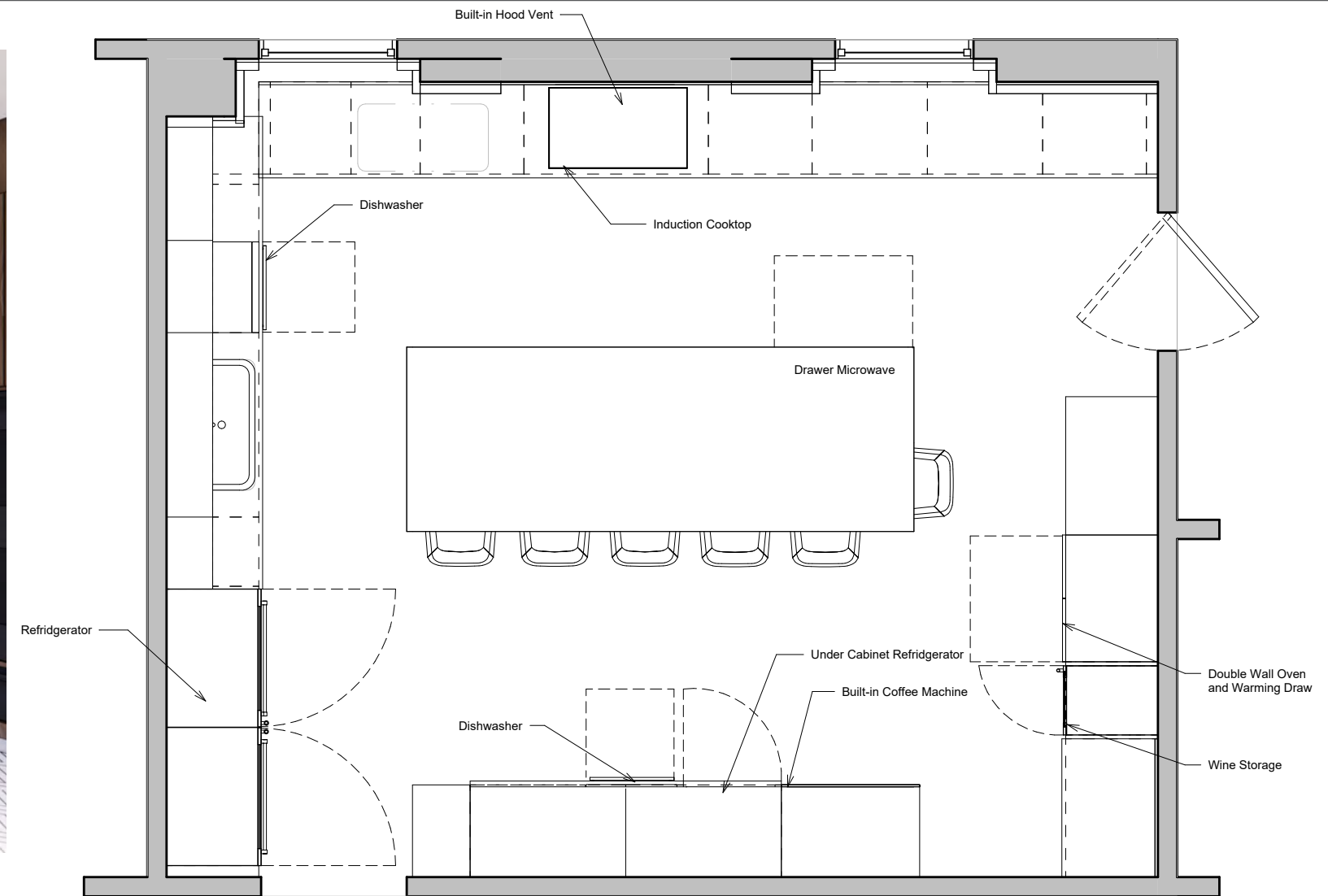


SMALL CONFERENCE ROOM

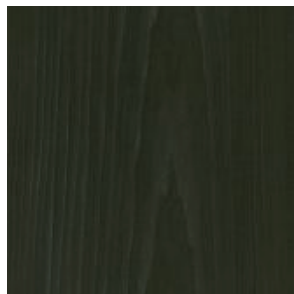




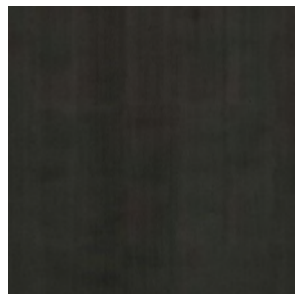
# A Chef's Custom Kitchen



Dooge Veneer  
Eucalyptus QTD  
Plain Fumed



Dooge Veneer  
Poplar FC Green



DeCastelli  
Oil Rubbed Steel



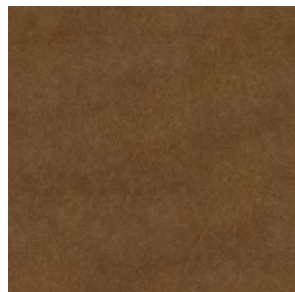
Hightower  
Caravaggio Pendant



Calcatta  
Macchia Vecchia  
Polished



Casa Mila  
Diamond Repeat



Fil Doux  
Genesis Sand  
Leather



Hightower  
Happy Bar Stool







PAULA FASTUCA

[pfastuca@gmail.com](mailto:pfastuca@gmail.com)

(516)816-5338

[linkedin.com/in/pfastuca](https://www.linkedin.com/in/pfastuca)

[@fastucastudio](#)