

PORTFOLIO

---

NEHAL  
MANTRI

# CONTENTS

---

01

COMMERCIAL  
INTERIORS  
NEW JERSEY

02

RETAIL  
INTERIORS  
MASSACHUSETTES

03

RETAIL  
INTERIORS  
CALIFORNIA

04

RETAIL  
INTERIORS  
NEW JERSEY

05

RESIDENTIAL  
INTERIORS  
CALIFORNIA

05

RESIDENTIAL  
INTERIORS  
NEW JERSEY

06

RESIDENTIAL  
INTERIORS  
PUNE

07

RESIDENTIAL  
INTERIORS  
MUMBAI

08

COMMERCIAL  
INTERIORS  
RAIPUR

09

COMMERCIAL  
INTERIORS  
MUMBAI



# THE VIEWS AT HUDSON POINTE, EDGEWATER, NEW JERSEY



RECEPTION AREA



MAIN LOUNGE



AMENITY LOUNGE



PANTRY AREA



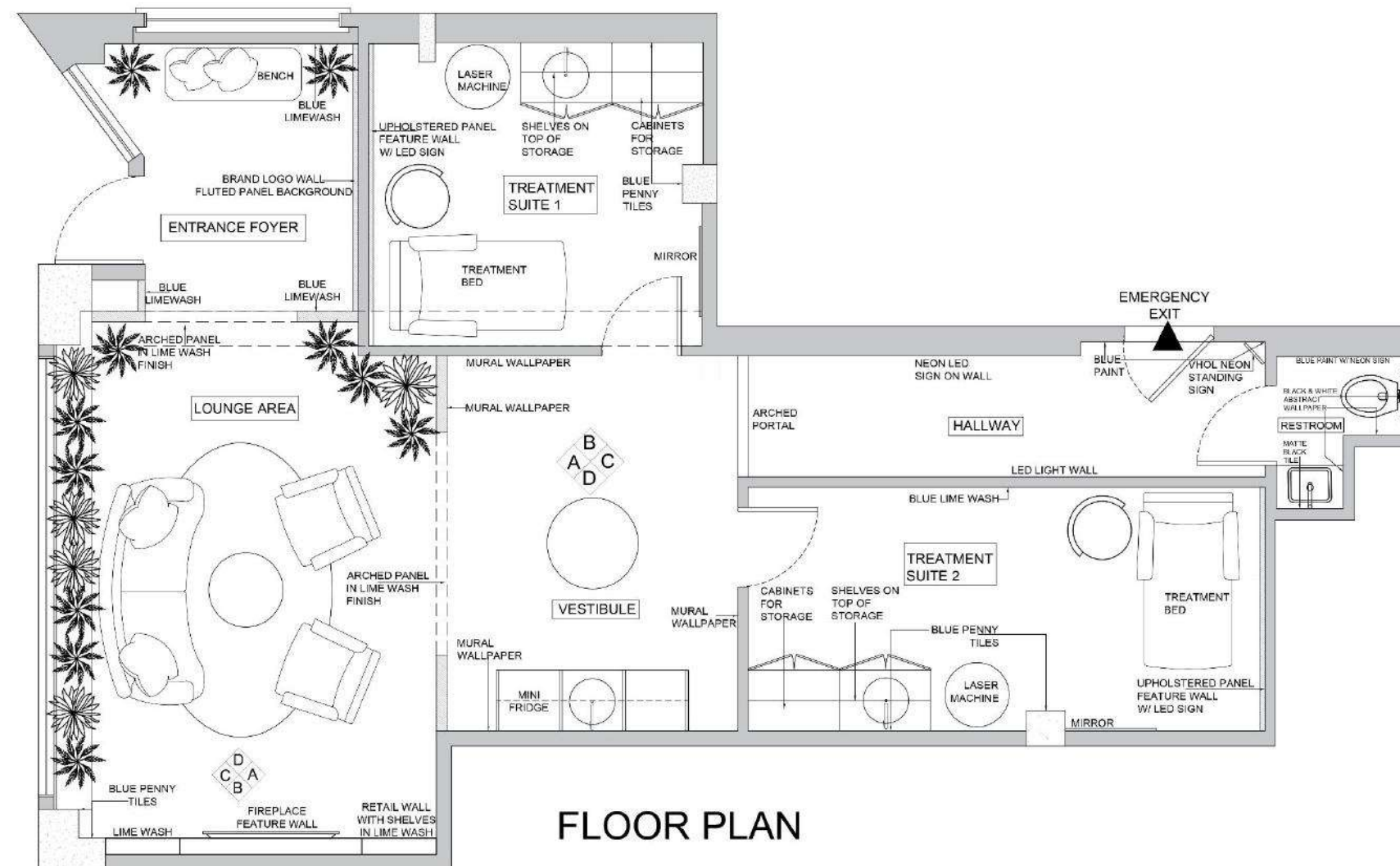
CAFE AREA



MEDIA ROOM



# VANISHED- HOUSE OF LASER, BOSTON, MA



LOUNGE INTERIOR ELEVATION



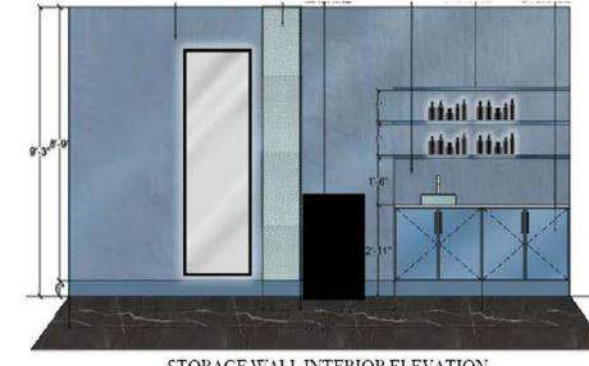
LOUNGE INTERIOR ELEVATION



VESTIBULE INTERIOR ELEVATION



VESTIBULE INTERIOR ELEVATION



STORAGE WALL INTERIOR ELEVATION



ENTRY INTERIOR ELEVATION



LOUNGE INTERIOR ELEVATION



LOUNGE INTERIOR ELEVATION



VESTIBULE INTERIOR ELEVATION



VESTIBULE INTERIOR ELEVATION



BRAND WALL INTERIOR ELEVATION



LIGHTING INSTALL INTERIOR ELEVATION



# VANISHED- HOUSE OF LASER, BOSTON, MASSACHUSETTES



ENTRANCE FOYER



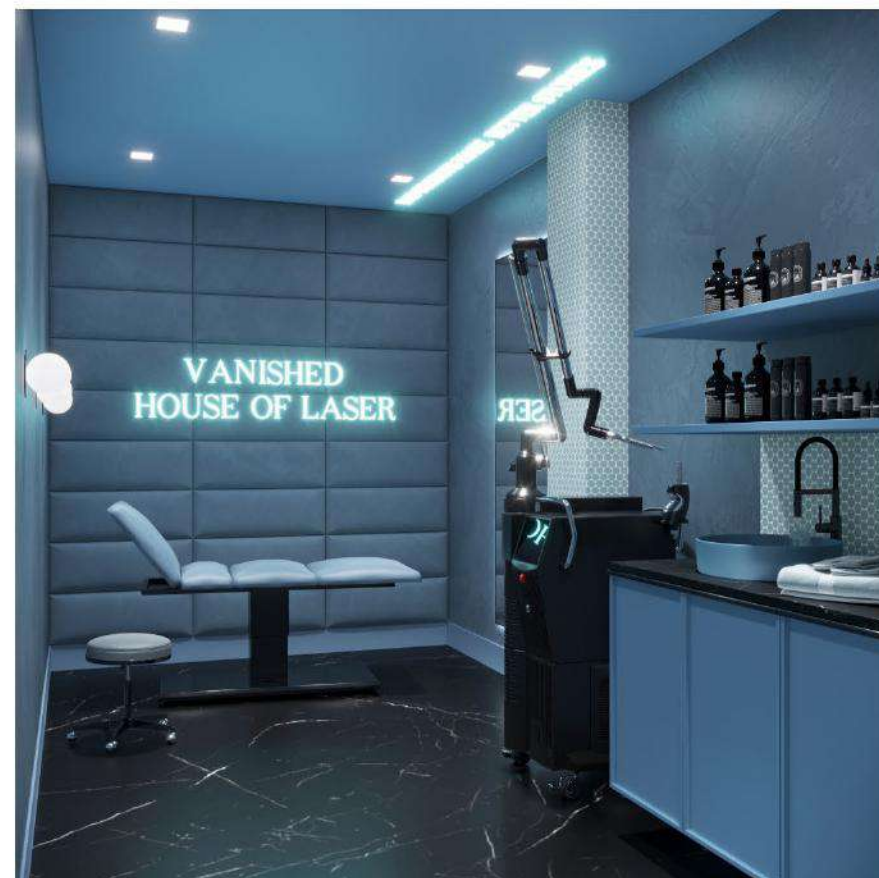
LOUNGE AND WAITING AREA



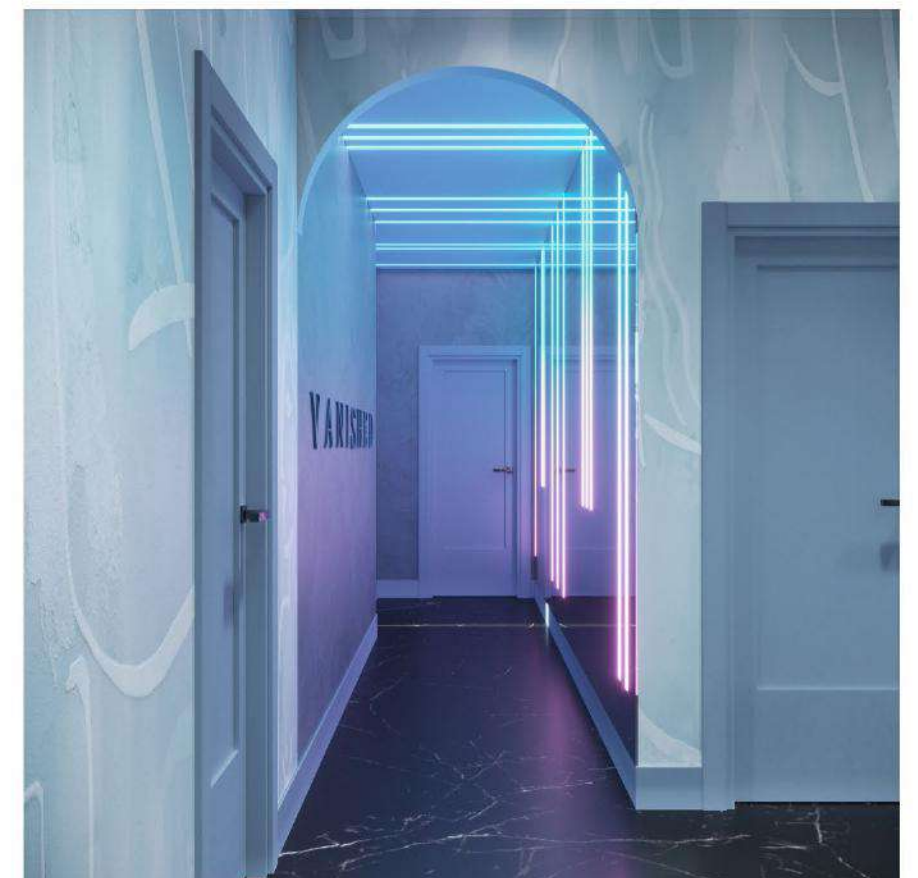
VESTIBULE AREA



TREATMENT SUITE 1



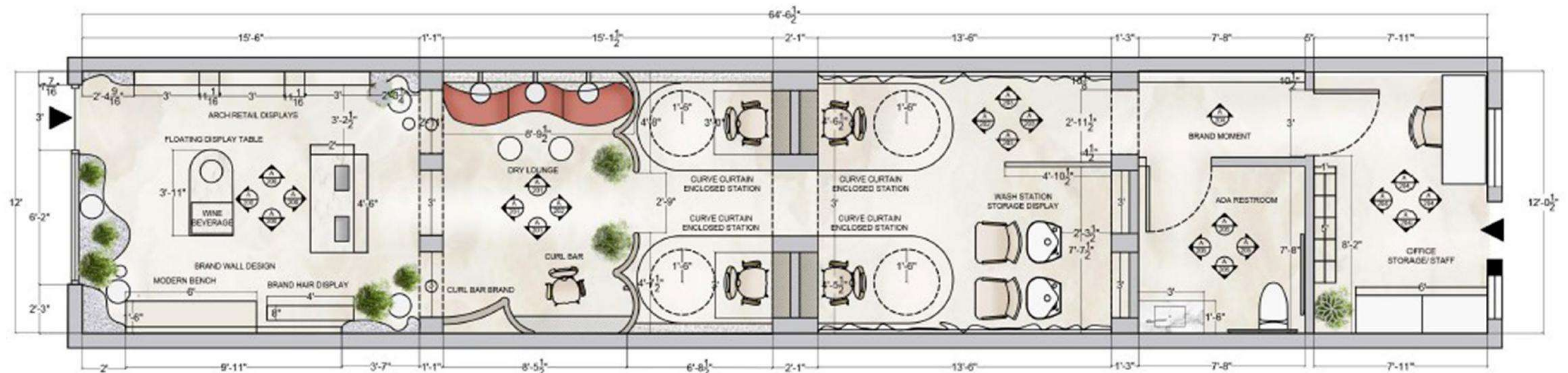
TREATMENT SUITE 2



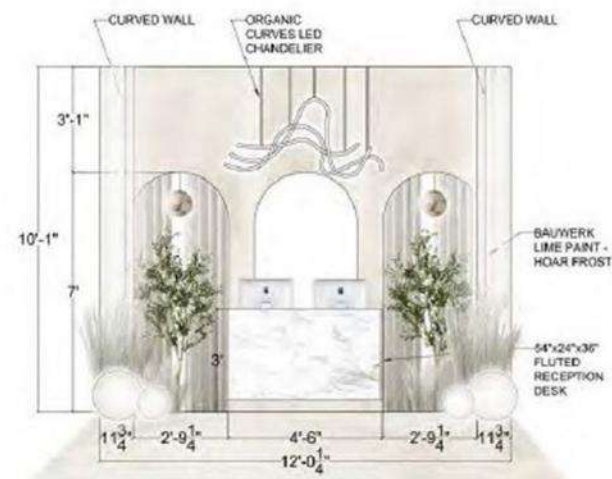
HALLWAY



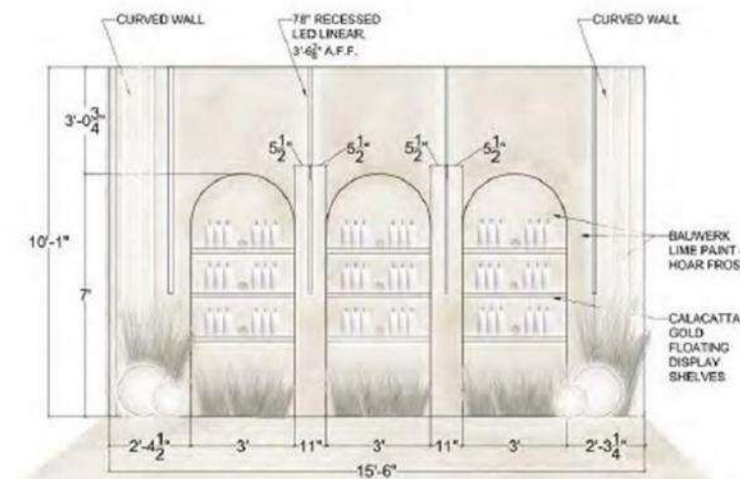
# HAIR SO CHIC, LOS ANGELES, CALIFORNIA- RENDERED PLAN AND ELEVATIONS



SCHEMATIC FLOOR PLAN



RECEPTION ELEVATION



RETAIL WALL ELEVATION

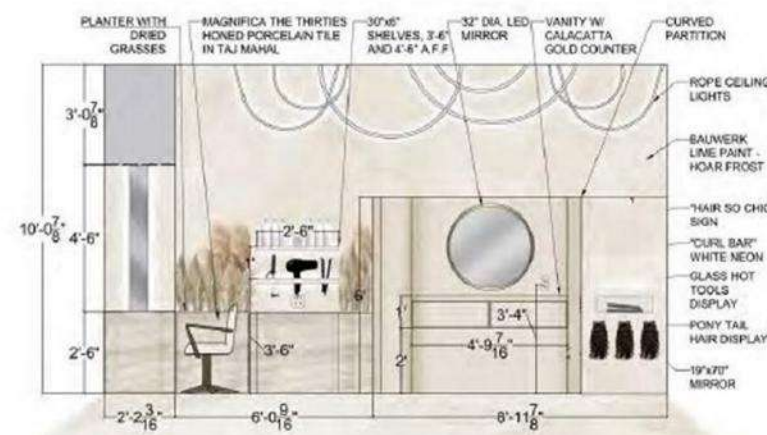
C F



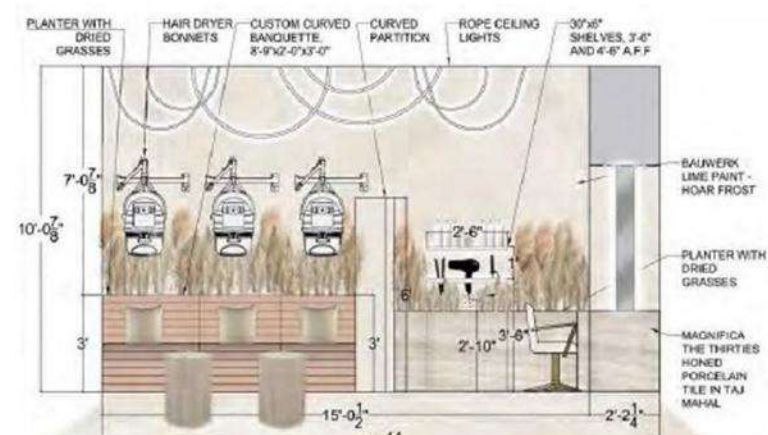
BRAND MOMENT ELEVATION



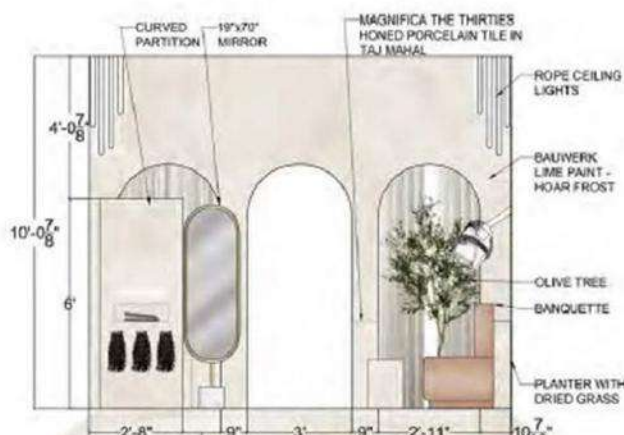
WEST ELEVATION



HAIR STATION ELEVATION



CURL BAR ELEVATION



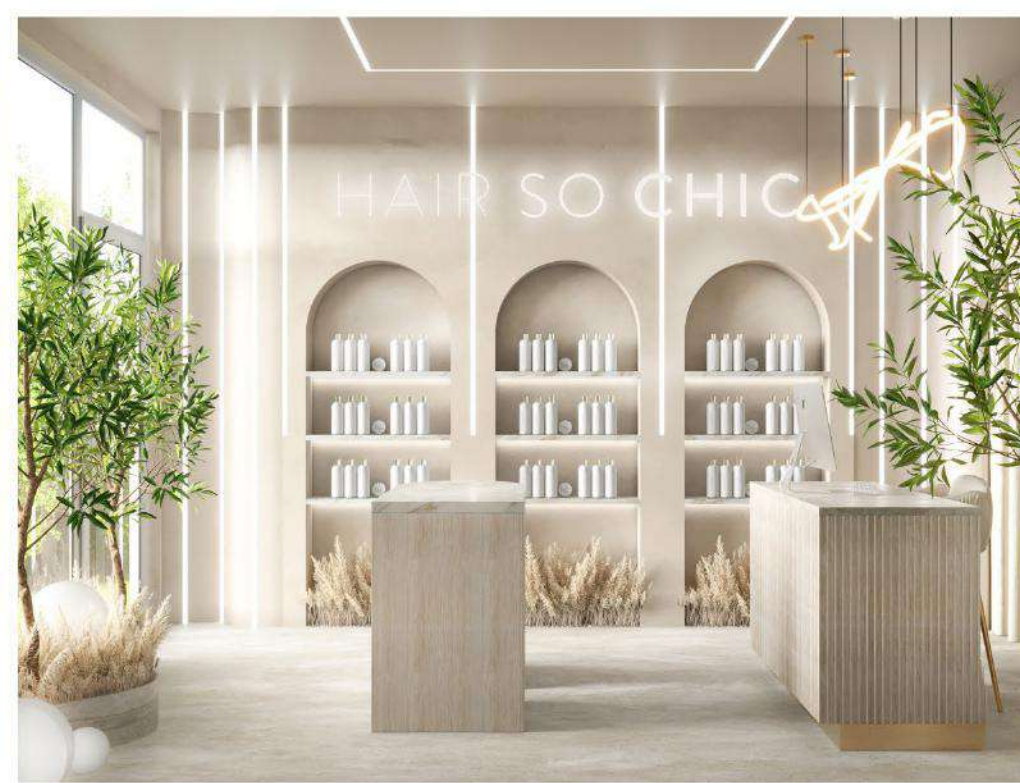
SALON WEST ELEVATION



# HAIR SO CHIC, LOS ANGELES, CALIFORNIA- RENDERED VIEWS



RECEPTION AND LOUNGE



RETAIL AREA



HAIR STATIONS



CURL BAR



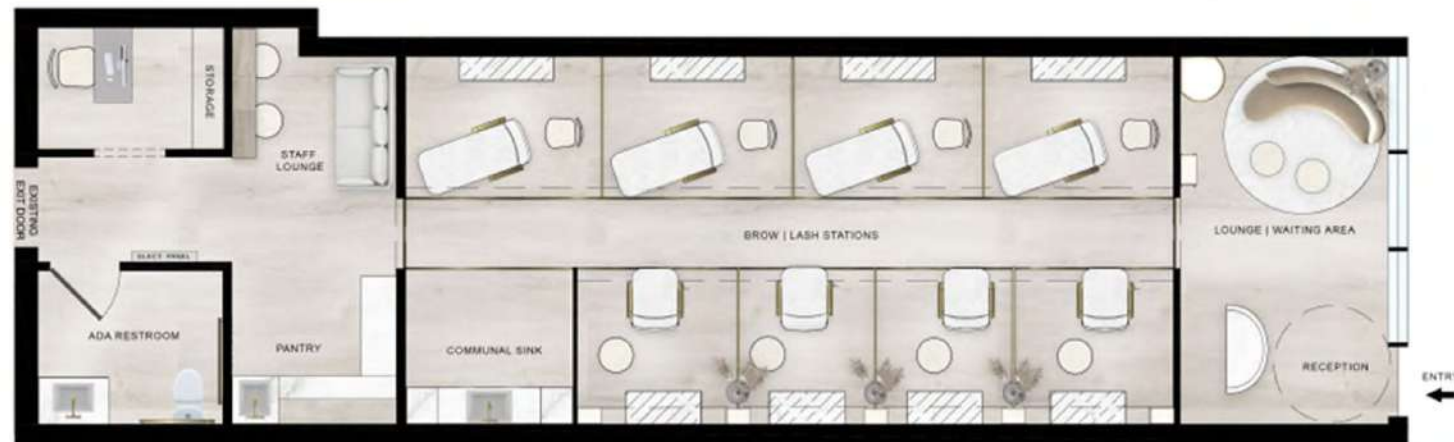
HAIR AND DRY STATIONS



WASH STATIONS



# LAVO- LASH & BROW STUDIO, METUCHEN, NEW JERSEY- RENDERED PLAN AND ELEVATIONS



SCHEMATIC FLOOR PLAN



RECEPTION AND LOUNGE ELEVATION



LASH STATION ELEVATIONS



BROW STATION ELEVATIONS



PANTRY AND STAFF LOUNGE ELEVATIONS

OFFICE ELEVATIONS



# LAVO- LASH AND BROW STUDIO, METUCHEN, NEW JERSEY- RENDERED VIEWS



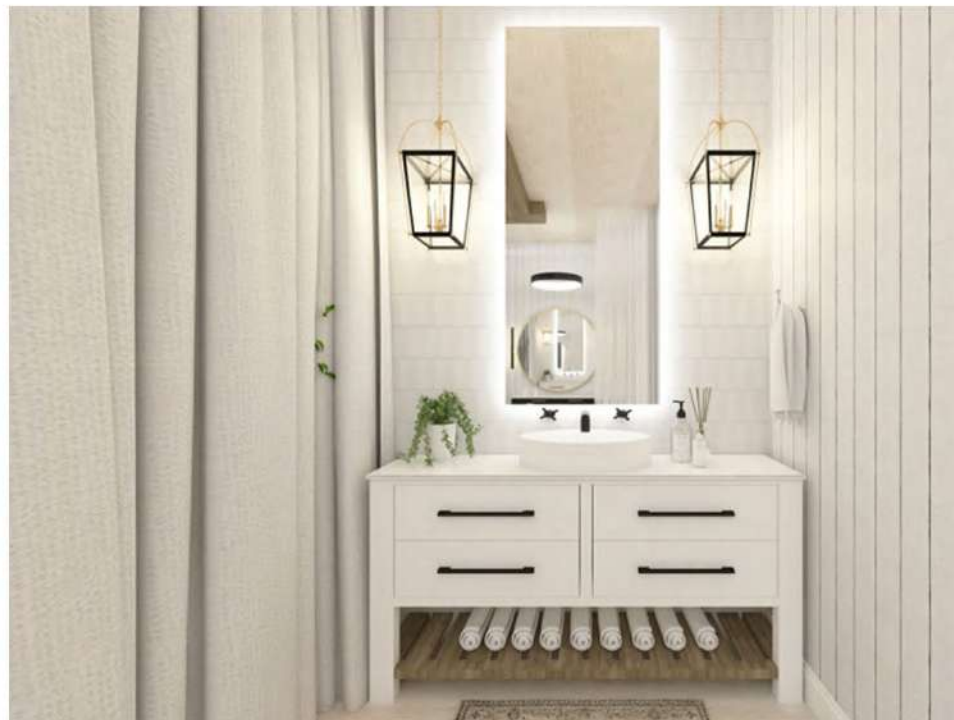
RECEPTION AND LOUNGE



BROW STATIONS



LASH STATIONS



COMMUNITY SINK



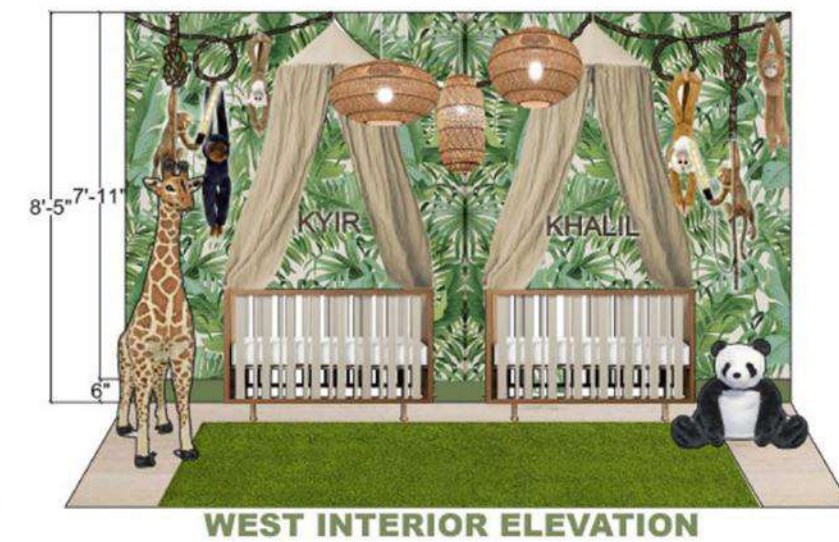
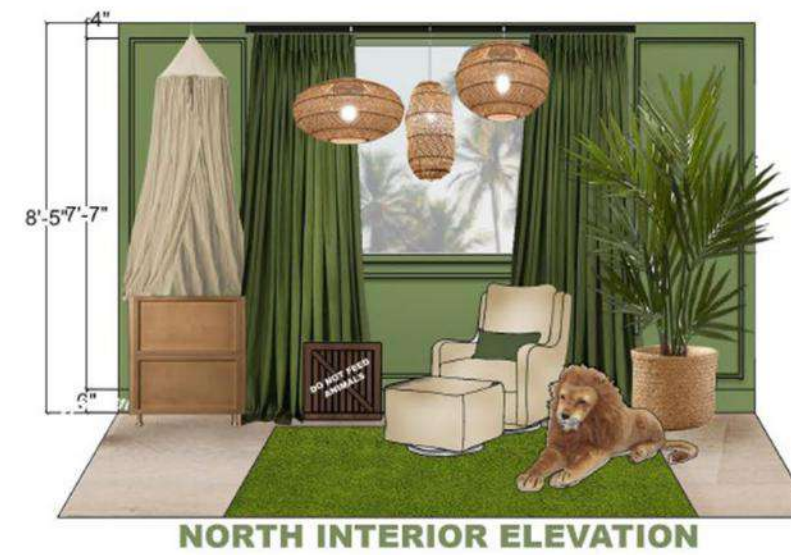
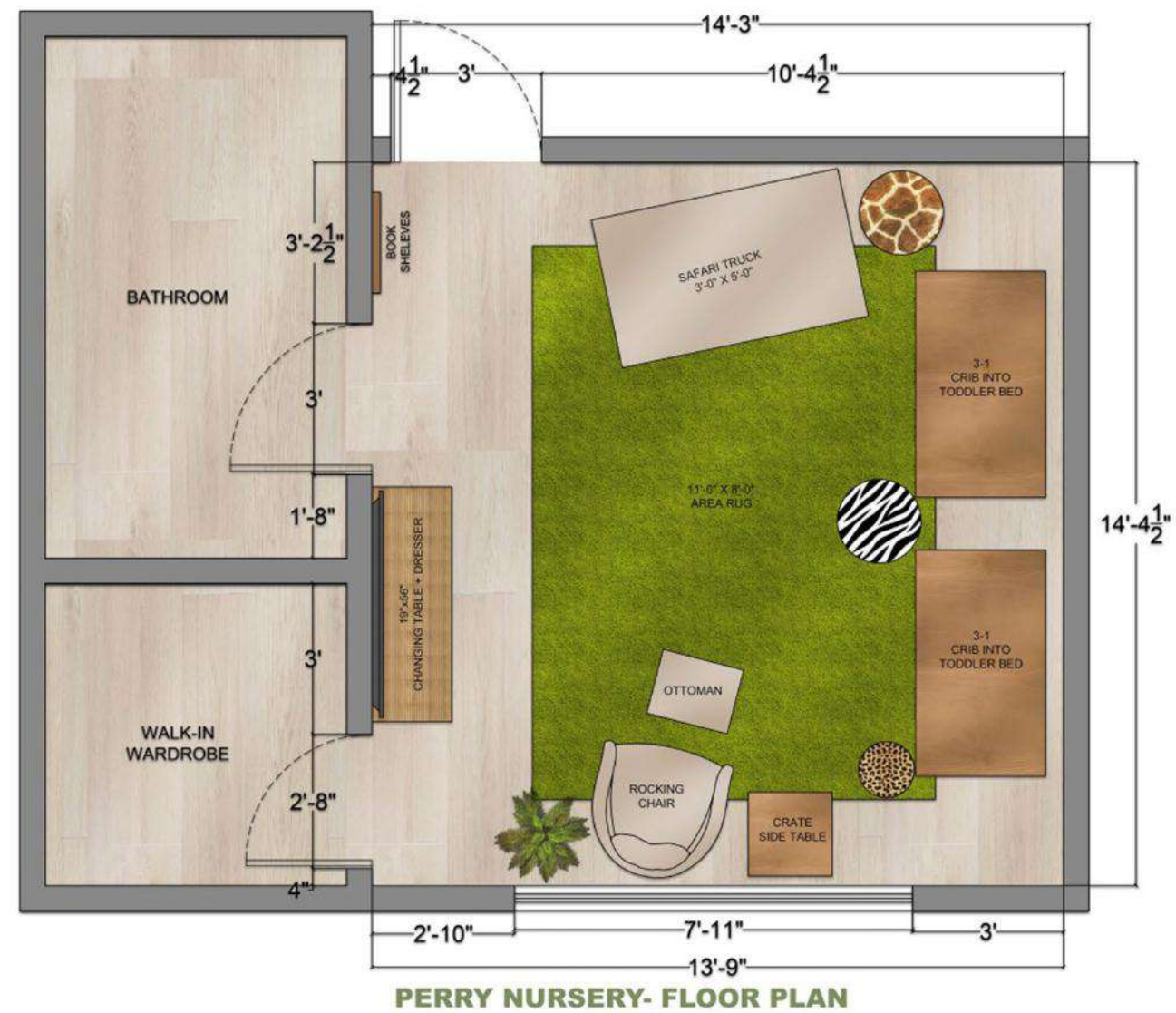
PANTRY AND EMPLOYEE LOUNGE



OFFICE

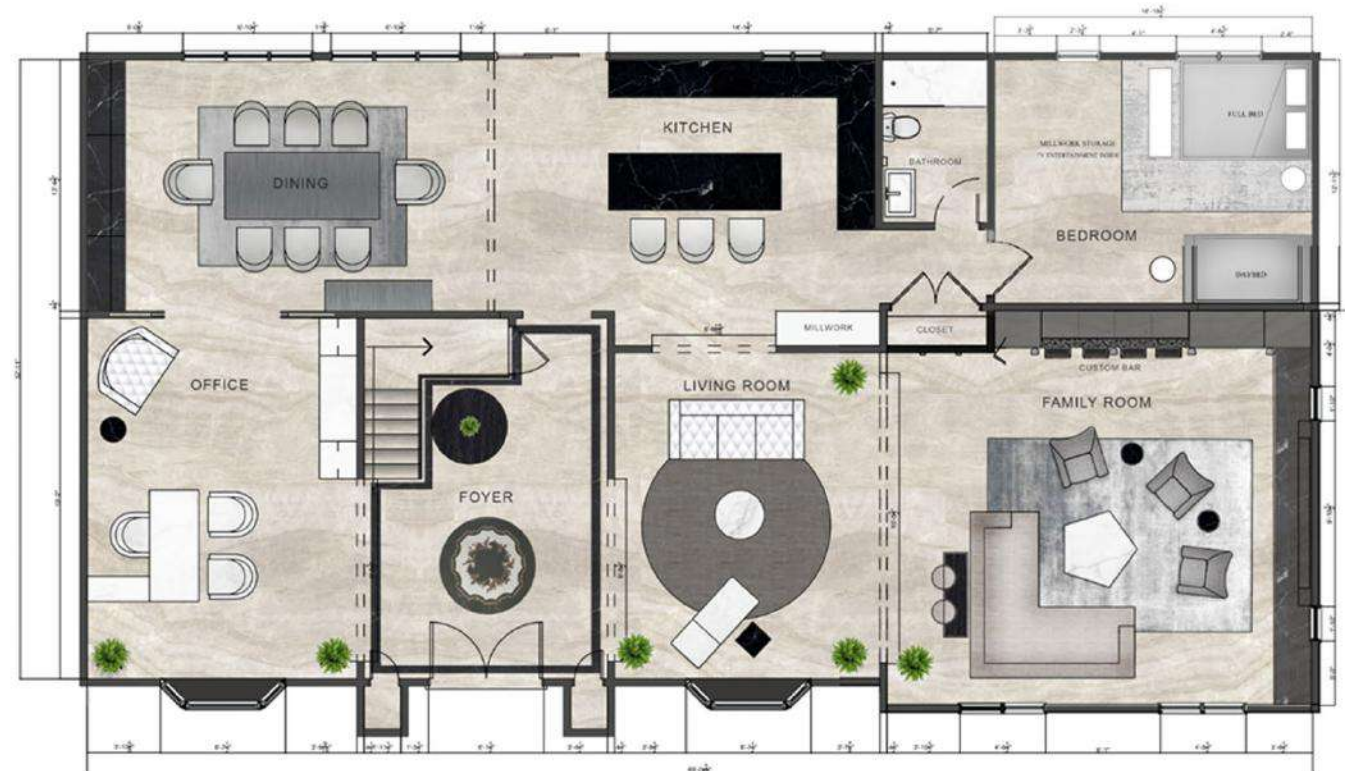


# PERRY NURSERY, COSTA DEL MAR, CALIFORNIA

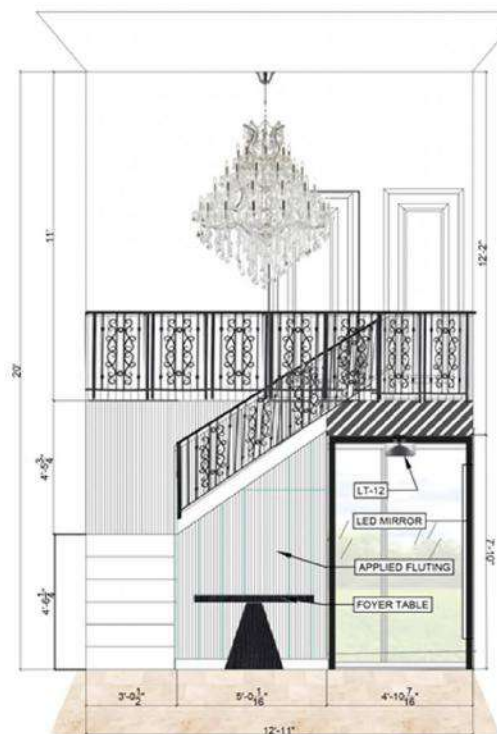




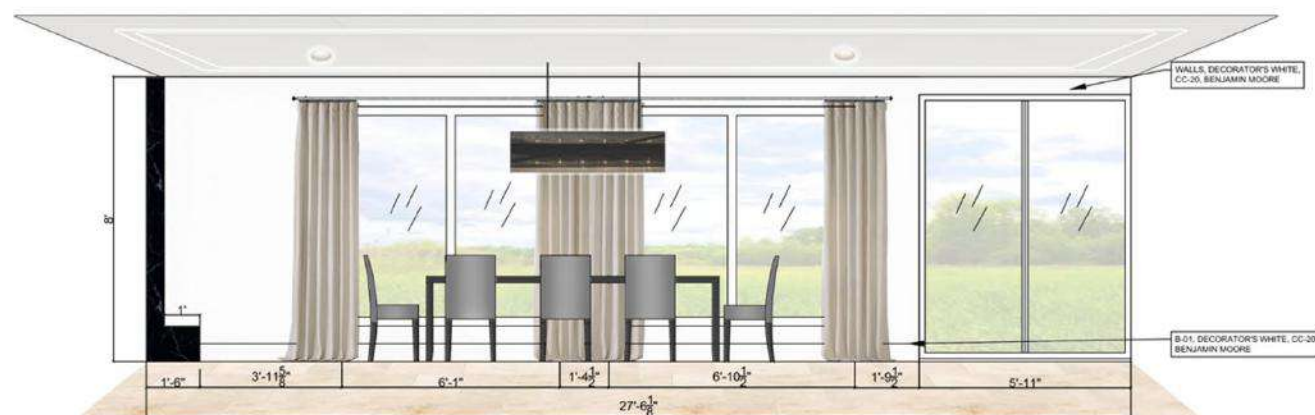
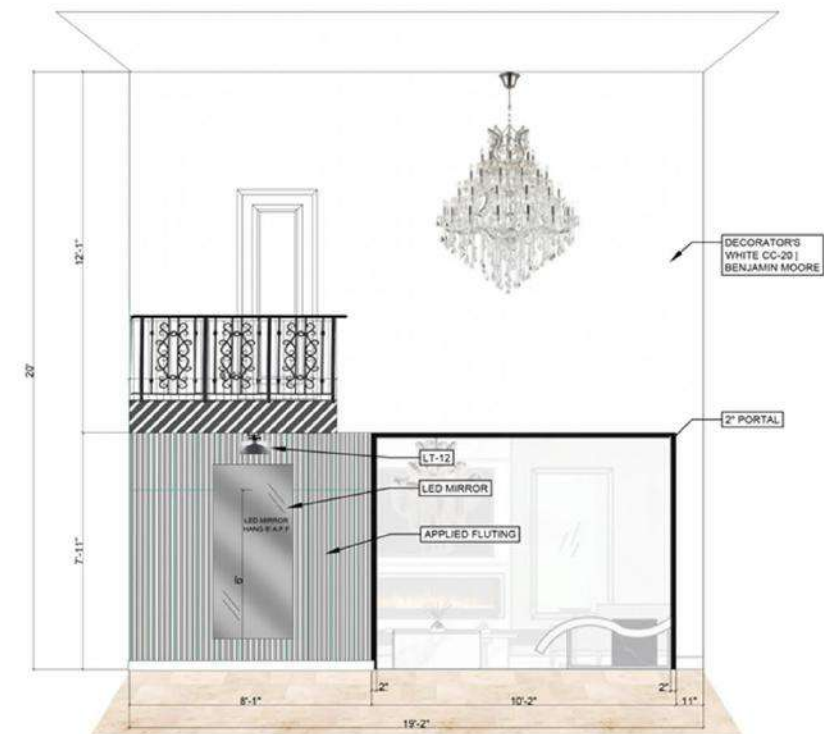
# HERNANDEZ RESIDENCE, TOWACO, NEW JERSEY- RENDERED PLAN & ELEVATIONS



SCHEMATIC FLOOR PLAN



FOYER ELEVATIONS



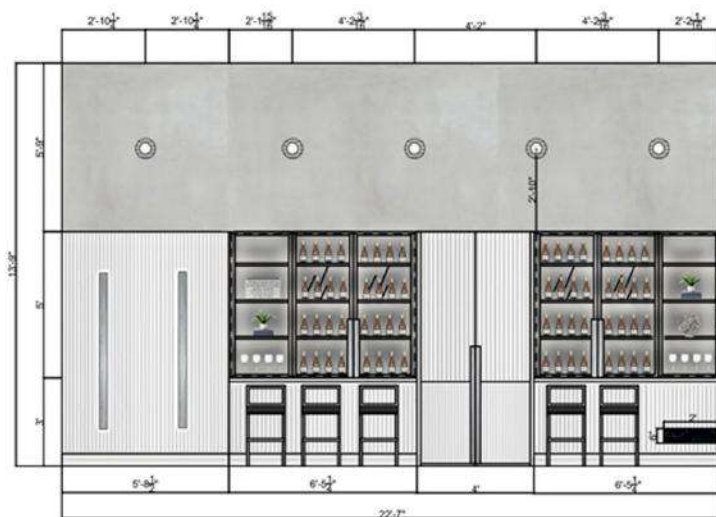
FORMAL DINING AREA ELEVATION



FORMAL DINING FIREPLACE ELEVATION



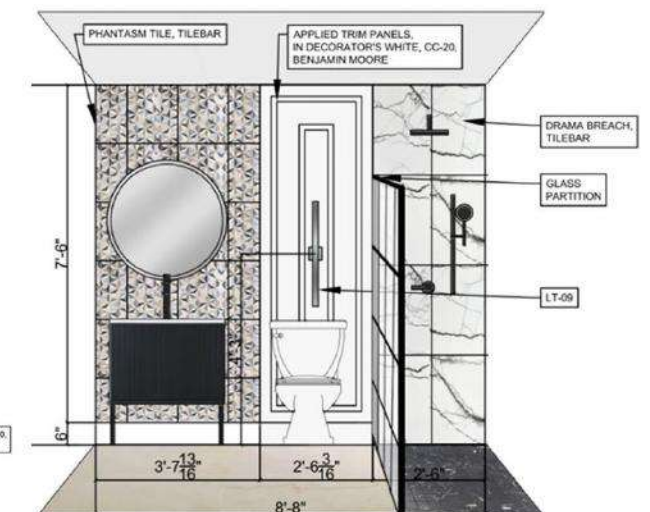
OFFICE ELEVATION



FORMAL LIVING AREA ELEVATION



OFFICE ELEVATION



GUEST WASHROOM ELEVATION



# HERNANDEZ RESIDENCE, TOWACO, NEW JERSEY- RENDERED VIEWS



FORMAL LIVING AREA RENDER



FORMAL DINING AREA RENDER



OFFICE RENDER



GUEST BEDROOM RENDER







# RESIDENTIAL INTERIORS FOR A 4 BHK APARTMENT IN PUNE, INDIA





# RESIDENTIAL INTERIORS FOR A 4 BHK APARTMENT IN PUNE, INDIA



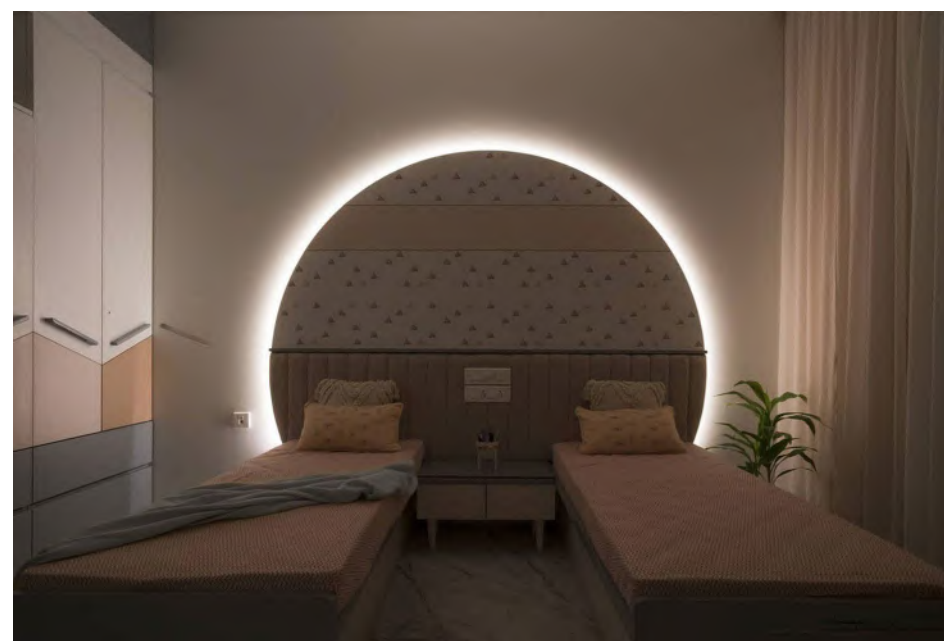
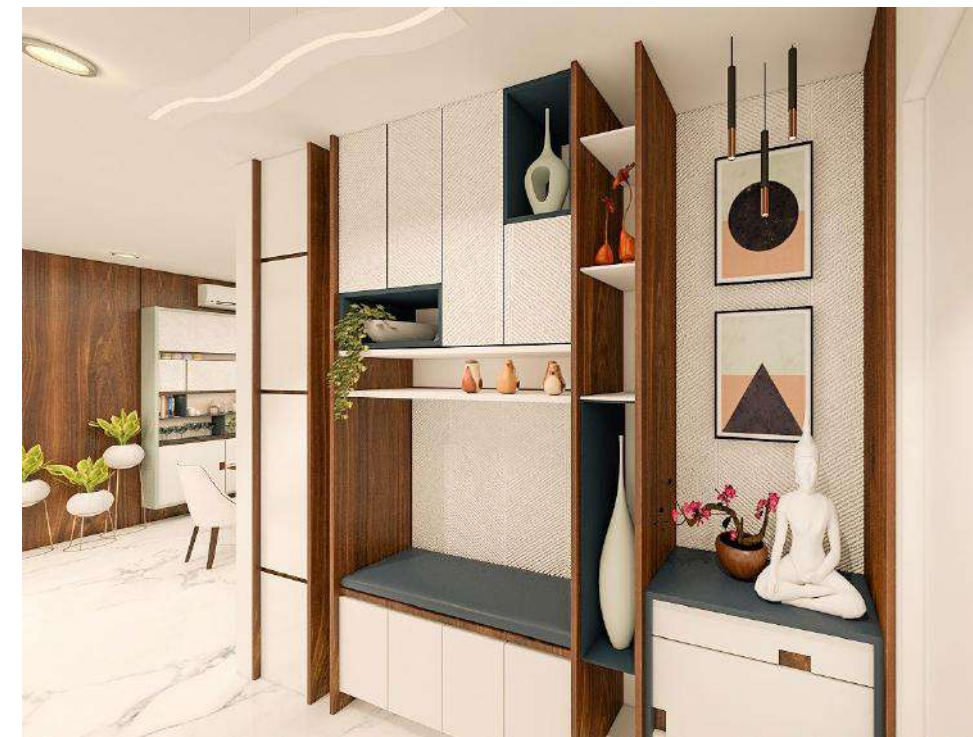


# PAVILLION DESIGN FOR A BUNGALOW IN PUNE, INDIA



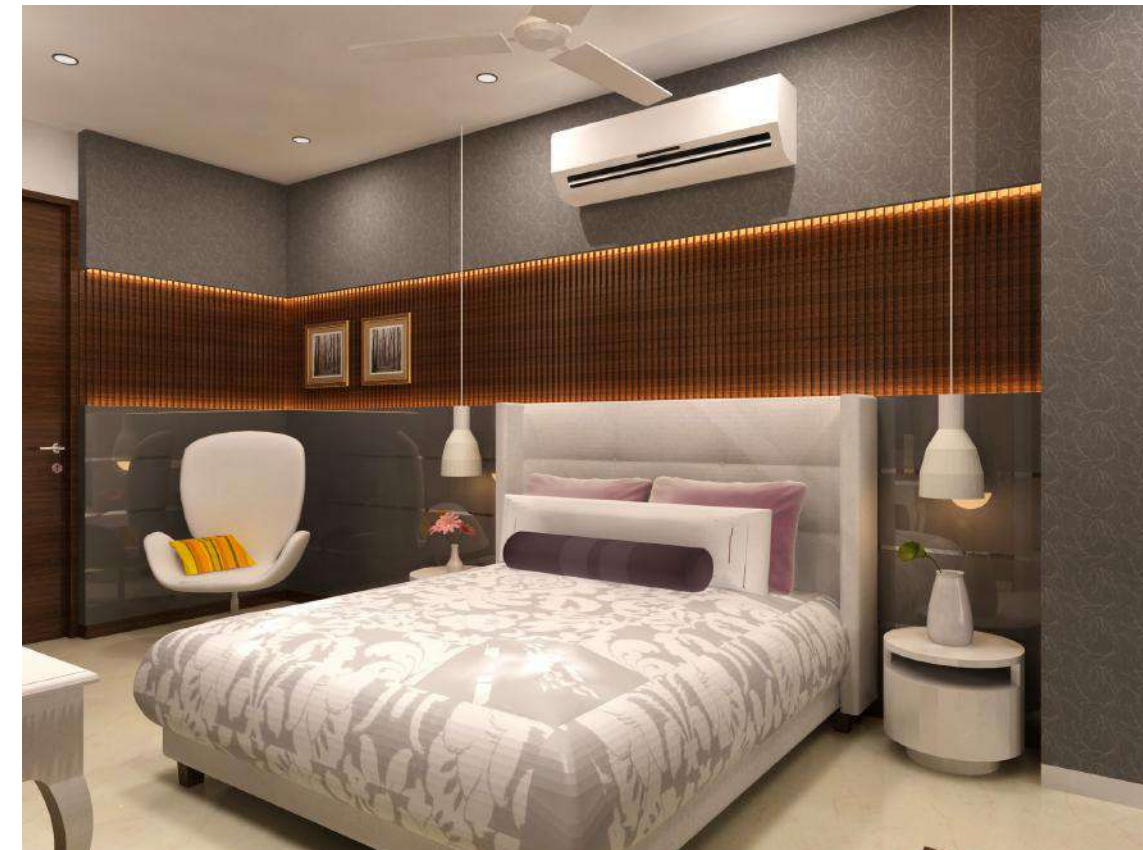


# RESIDENTIAL DESIGN FOR A 3 BHK APARTMENT IN PUNE, INDIA





# RESIDENTIAL INTERIORS FOR A 4 BHK APARTMENT IN MUMBAI, INDIA



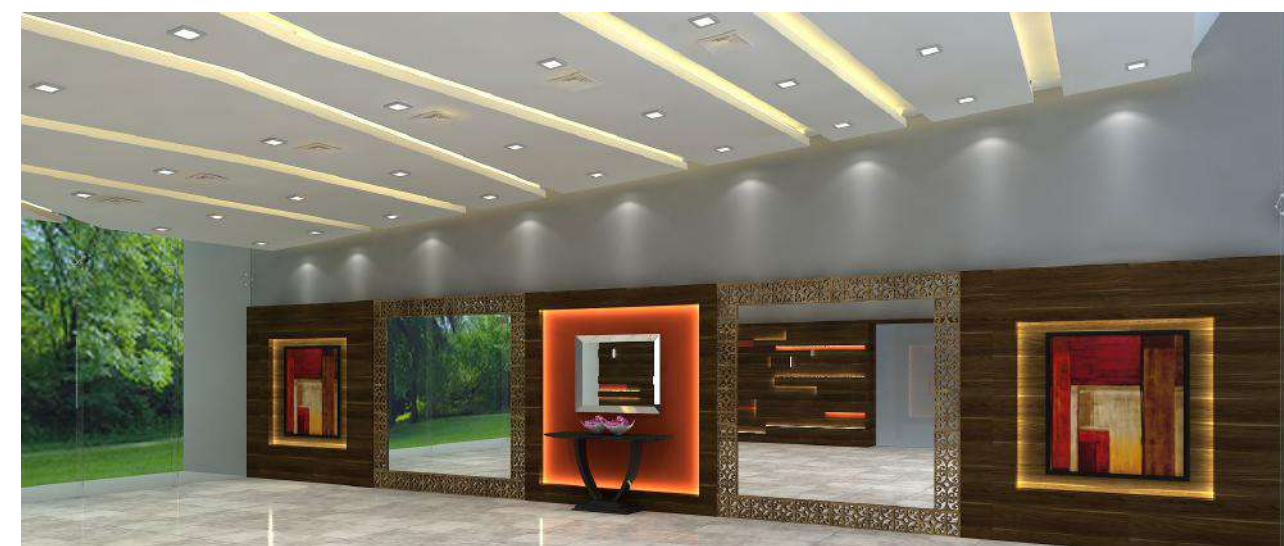
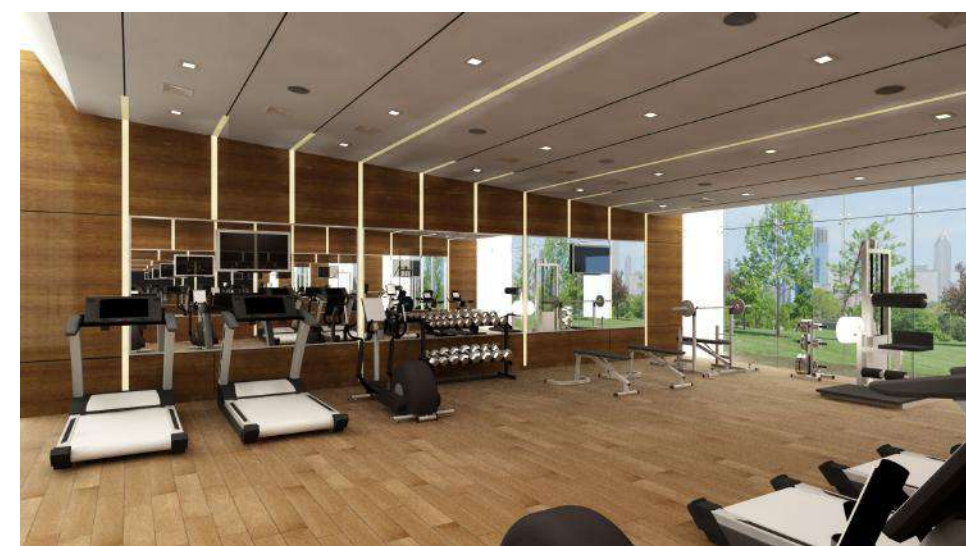
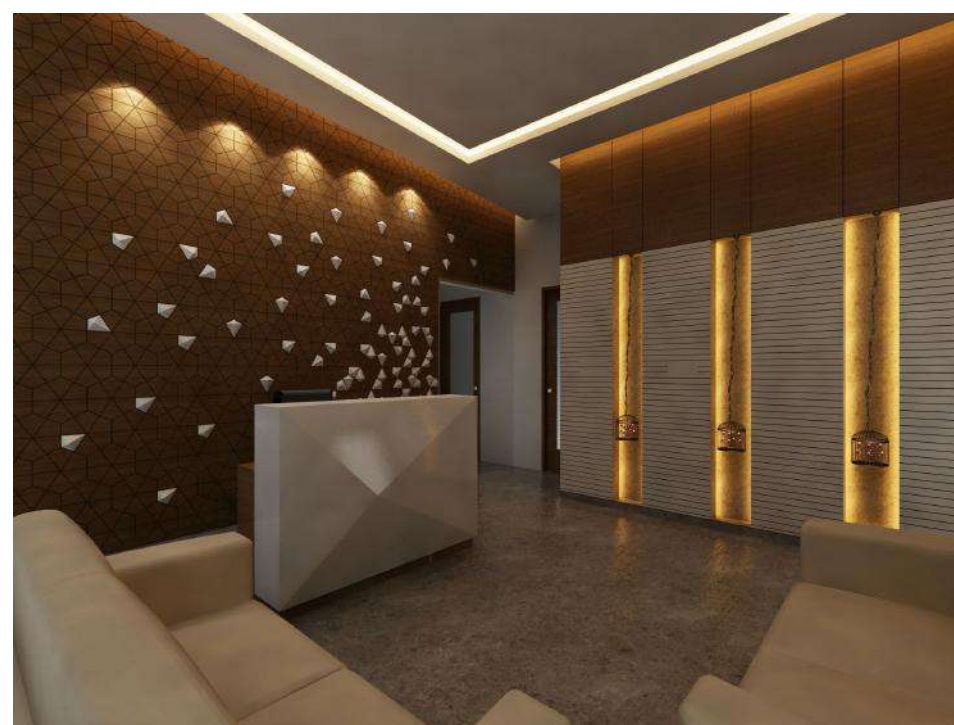
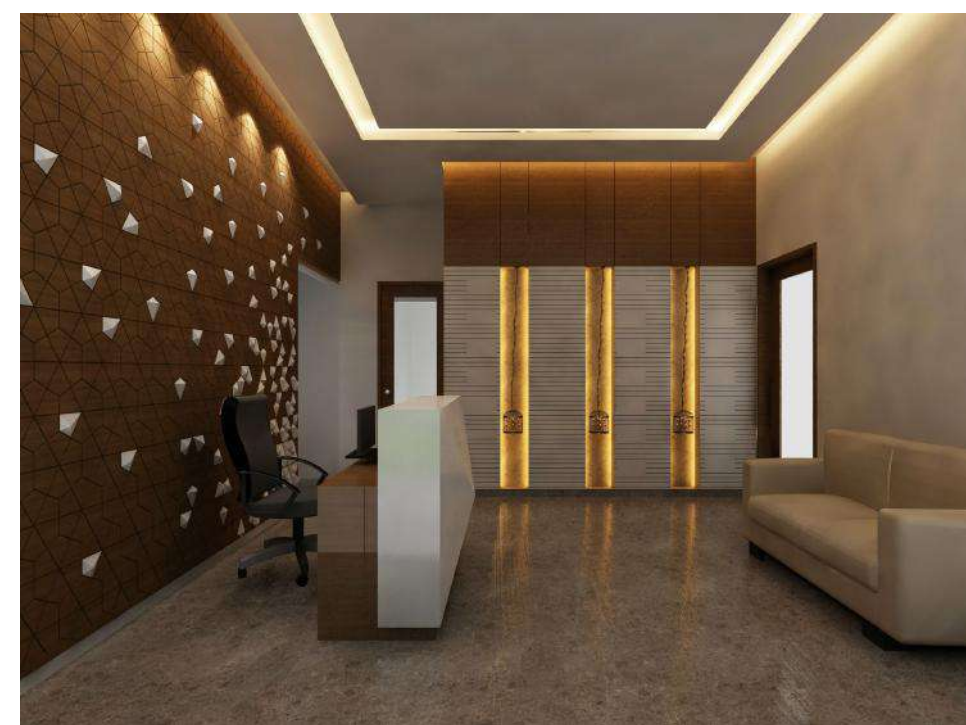


# RESIDENTIAL INTERIORS FOR A 4 BHK APARTMENT IN MUMBAI, INDIA



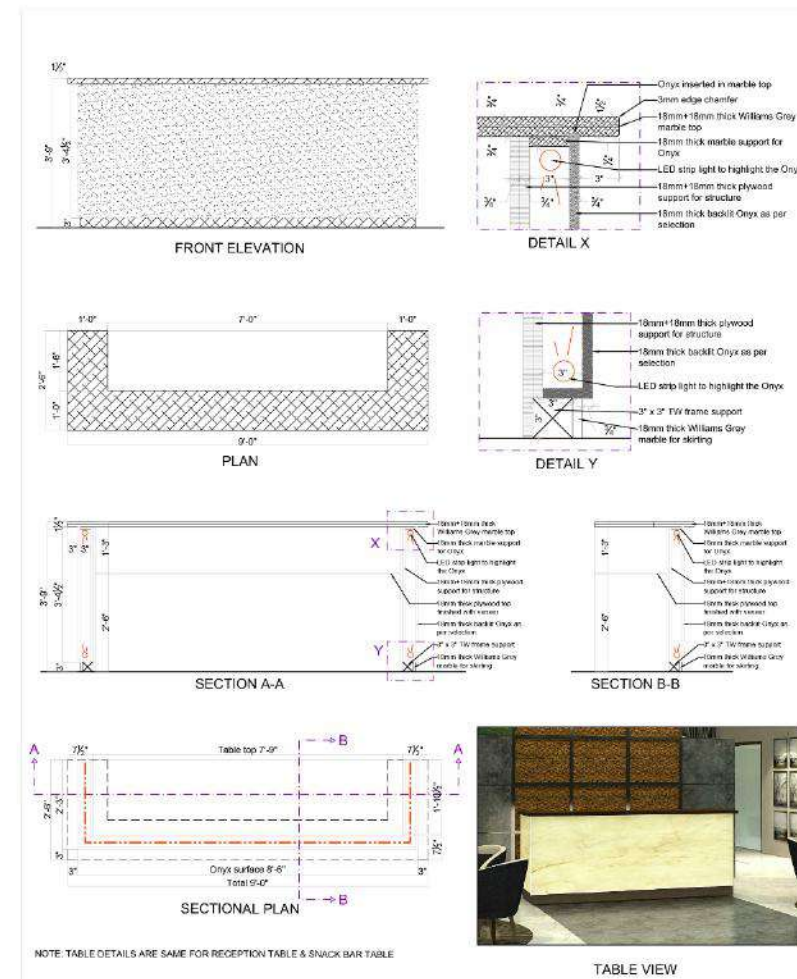


# COMMERCIAL INTERIORS FOR A CLUBHOUSE IN RAIPUR, INDIA

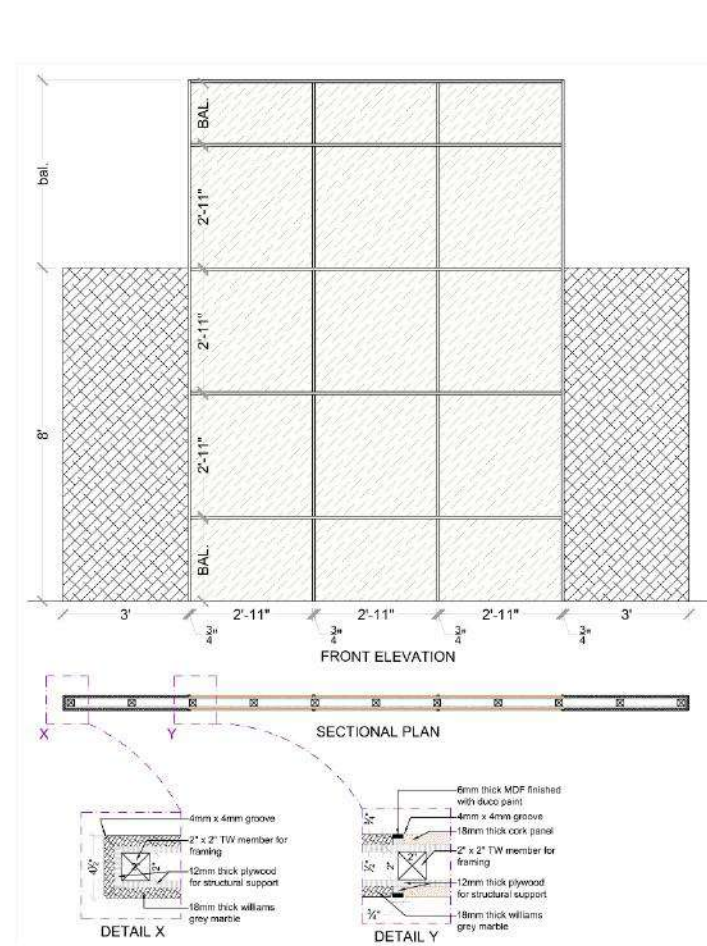




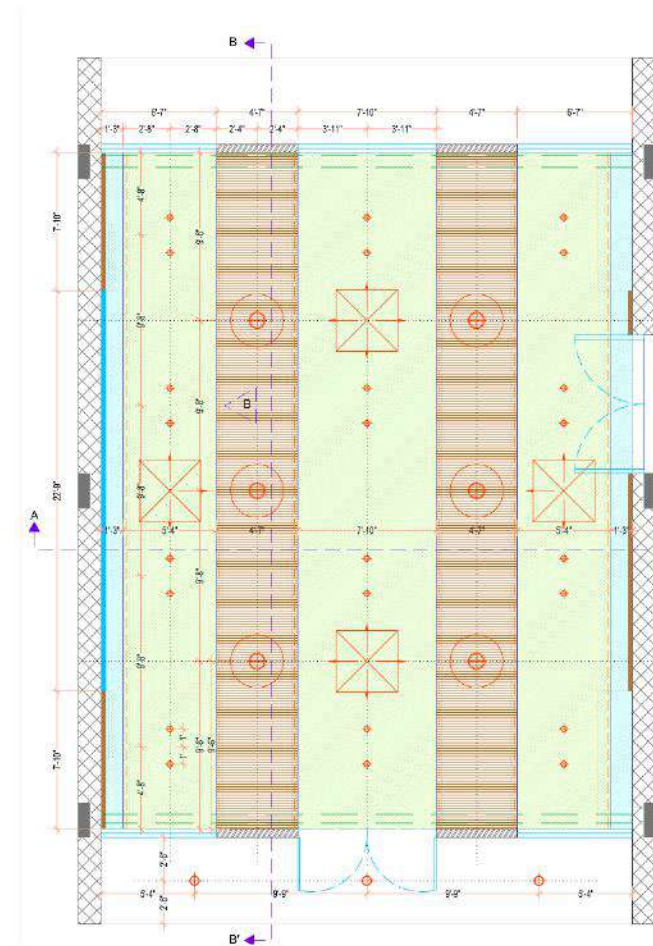
# WORKING DRAWINGS OF THE CLUBHOUSE IN RAIPUR, INDIA



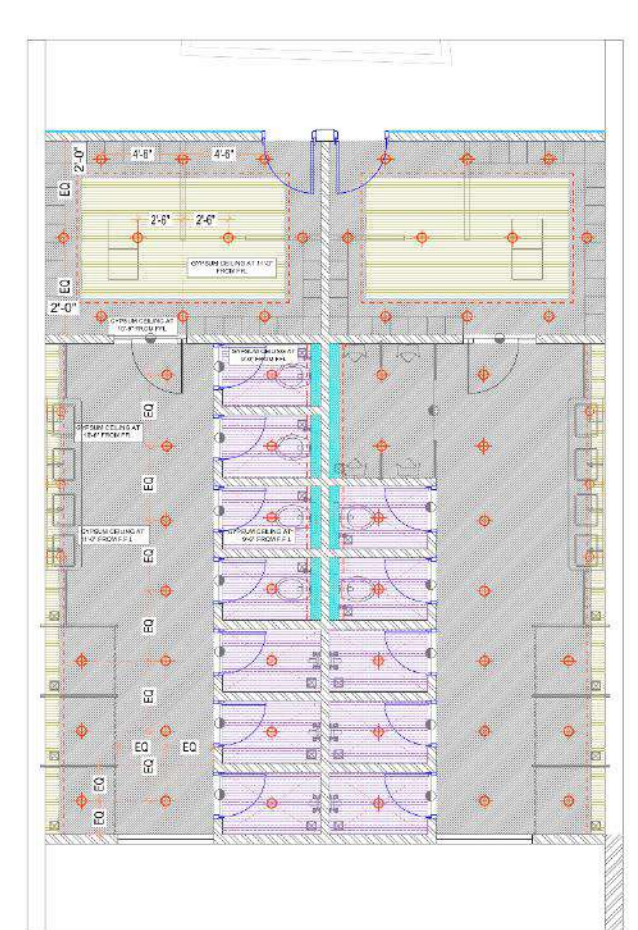
Entrance Block- Snack Bar Table details



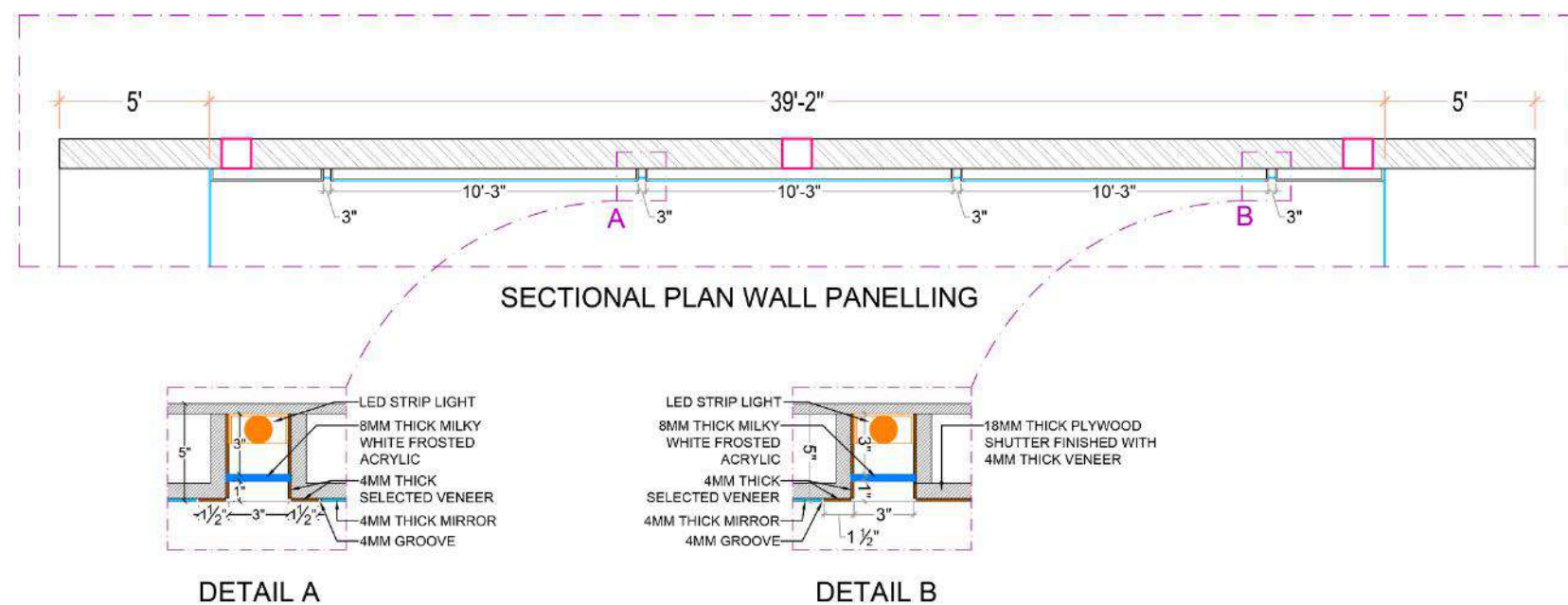
Entrance Block- Partition details



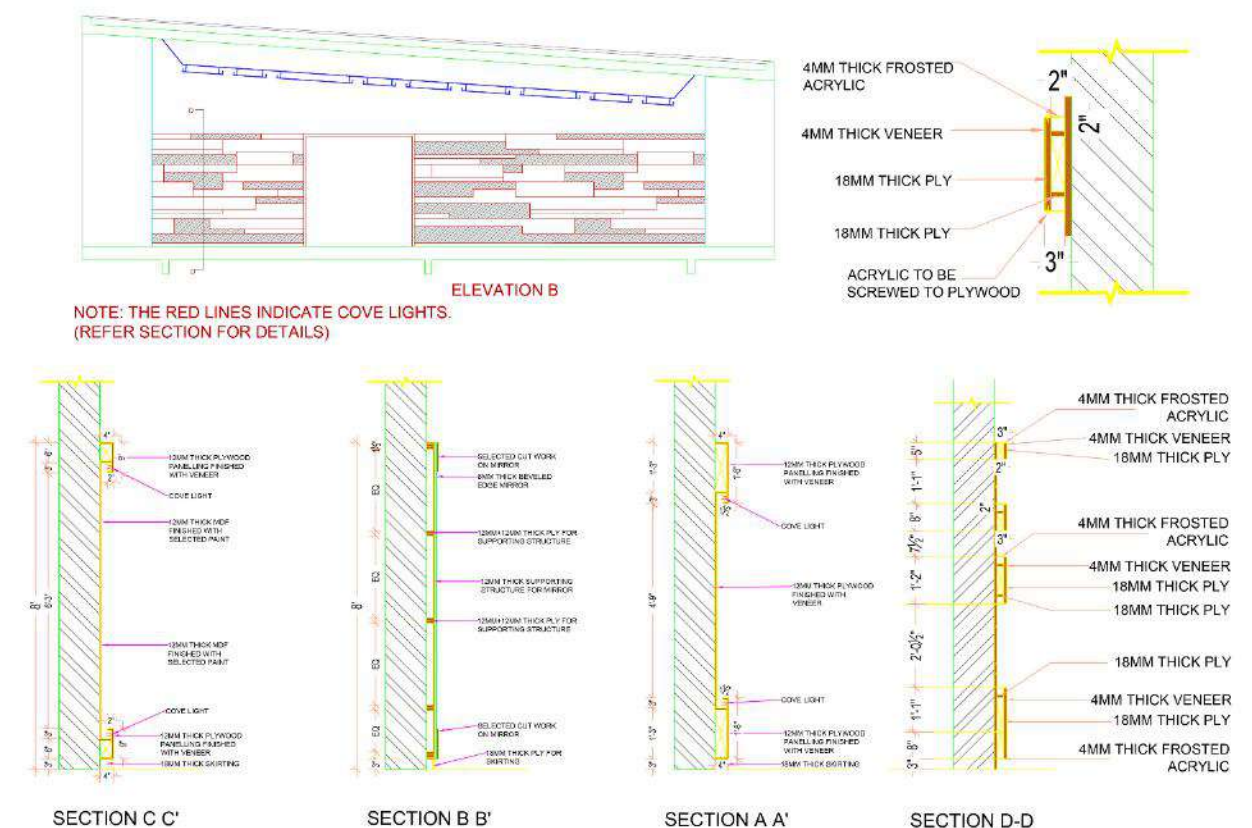
Yoga Block- Ceiling Layout



Toilet Block- Ceiling Layout



Gym Block- Wall Panelling Detail



Yoga Block- Wall Panelling Detail



# COMMERCIAL INTERIORS FOR AN OFFICE IN MUMBAI, INDIA





# PHOTOGRAPHS OF COMMERCIAL INTERIORS FOR AN OFFICE IN PUNE, INDIA





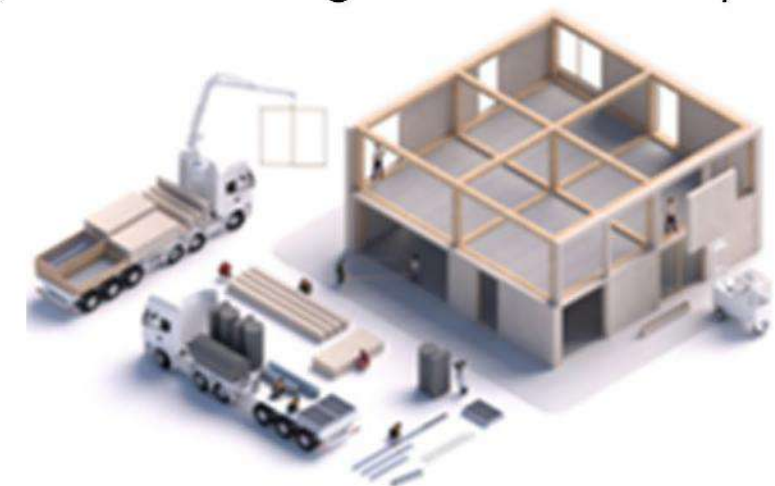
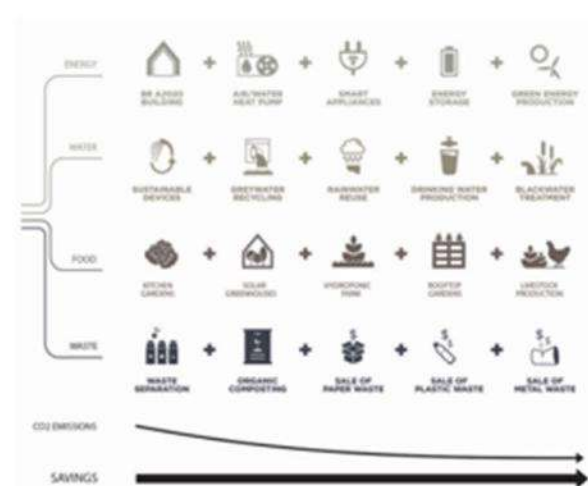
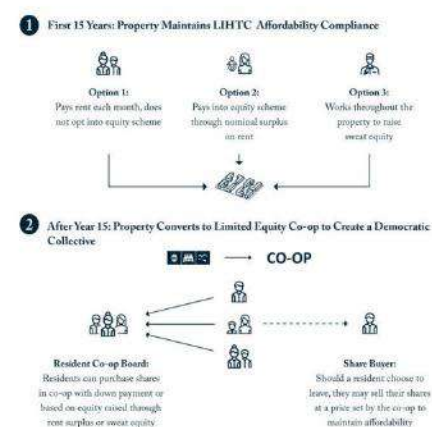
# THE TERRACES AT RED HOOK, BROOKLYN



## AFFORDABLE HOUSING IN RED HOOK, BROOKLYN

The concept of the design is CIRCULAR ECONOMY and URBAN HOMESTEADING. The model of circular economy is a viable option to achieve high levels of sustainability with diminishing the profitability of the business of services.

Urban Homesteading means that a person or family follows the principle of low impact, sustainable, self-sufficient living and I have achieved that concept by providing urban farming on the terraces of buildings which will be run and owned by the residents of the complex. The complex has been constructed using pre-fabricated Cross Laminated Timber, hence adding to its affordability and sustainability.







COFFEY PARK

SITE PLAN

GROUND FLOOR PLAN/SITE PLAN







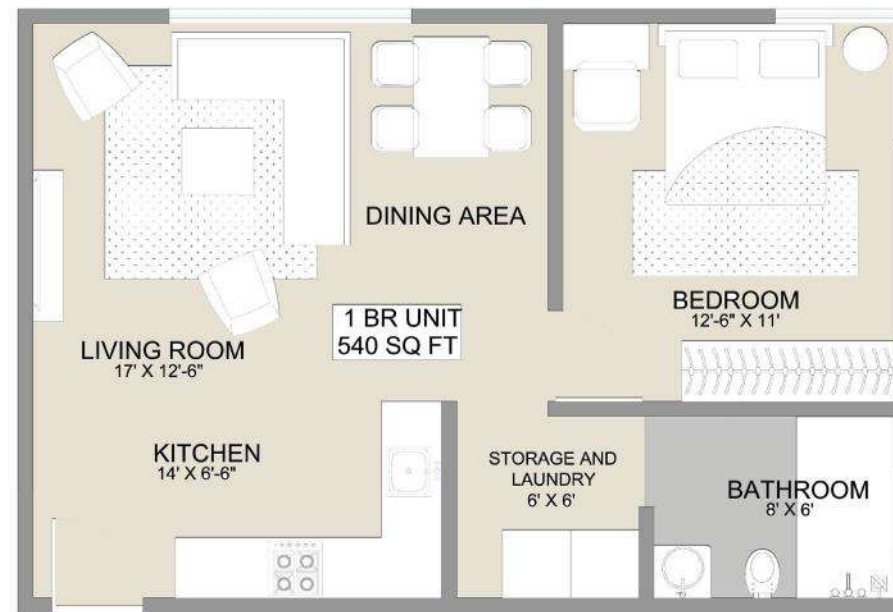
FIRST FLOOR PLAN



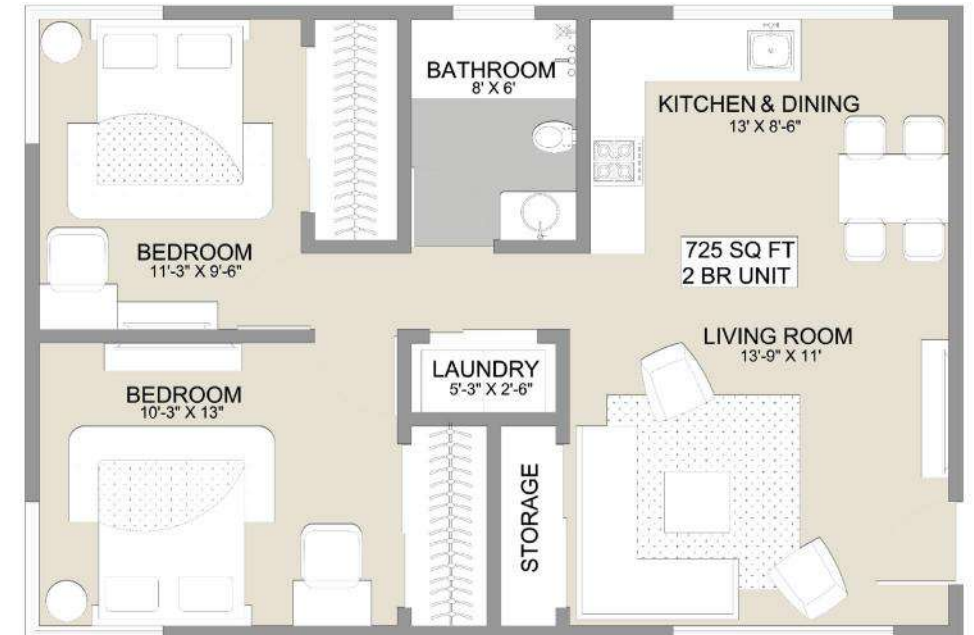
SECOND FLOOR PLAN



STUDIO APARTMENT INTERIOR LAYOUT



1 BEDROOM APARTMENT INTERIOR LAYOUT

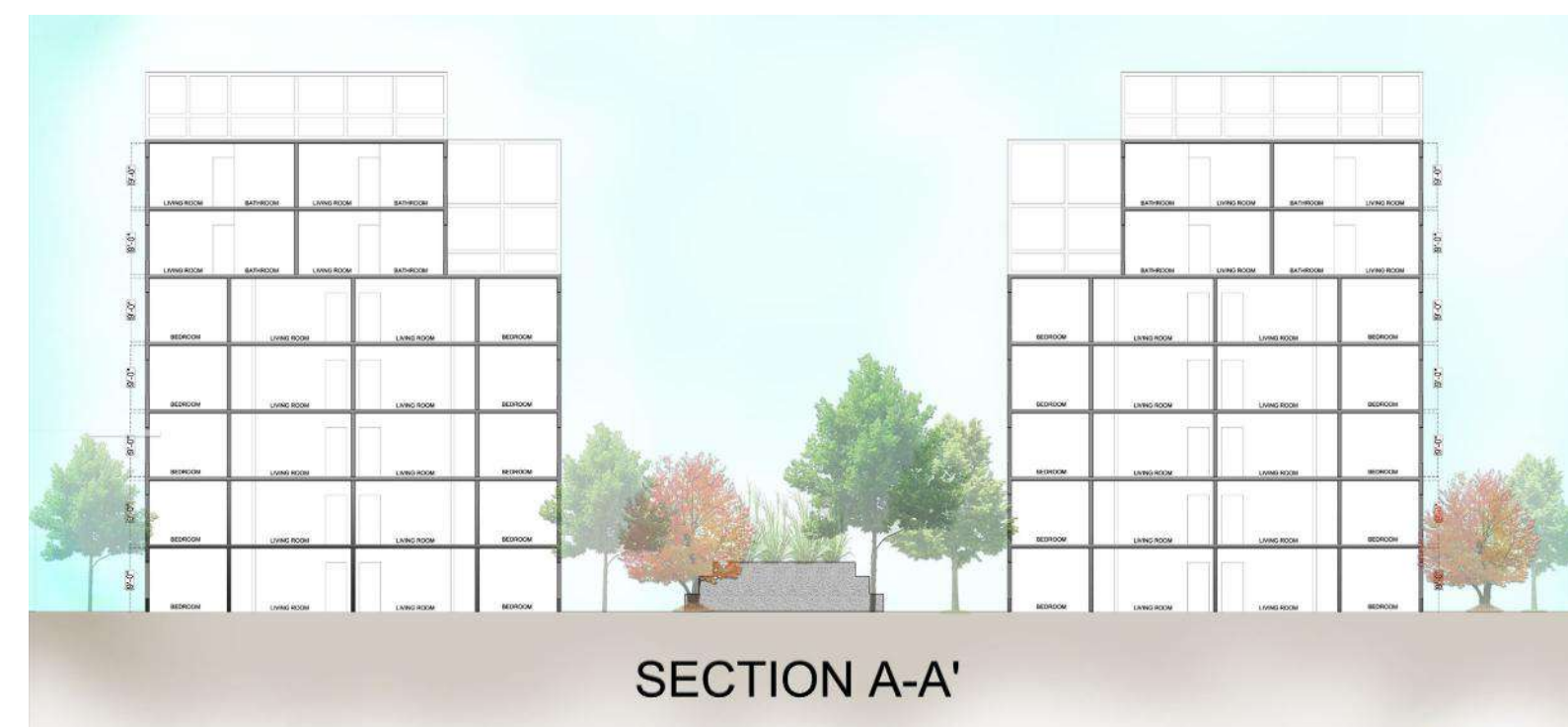


2 BEDROOM APARTMENT INTERIOR LAYOUT



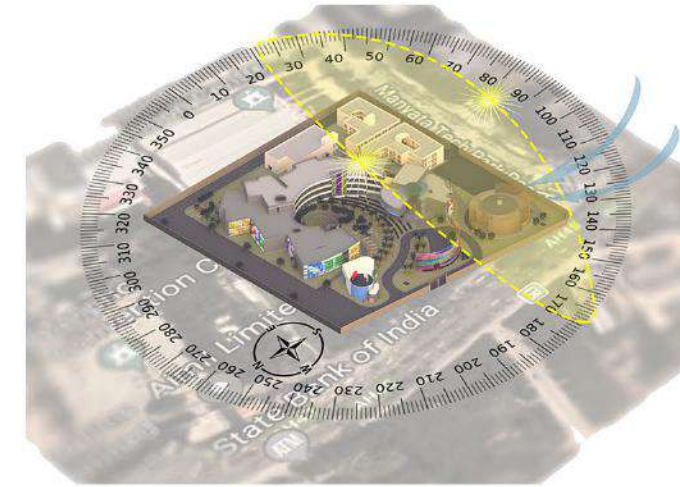








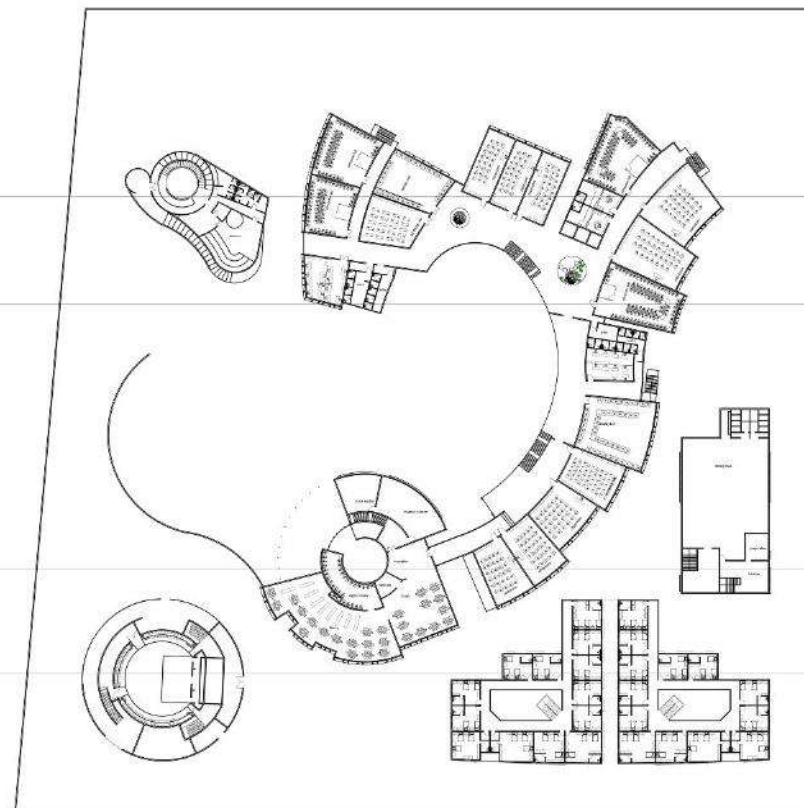
# NIFT CAMPUS DESIGN, BANGALORE, INDIA



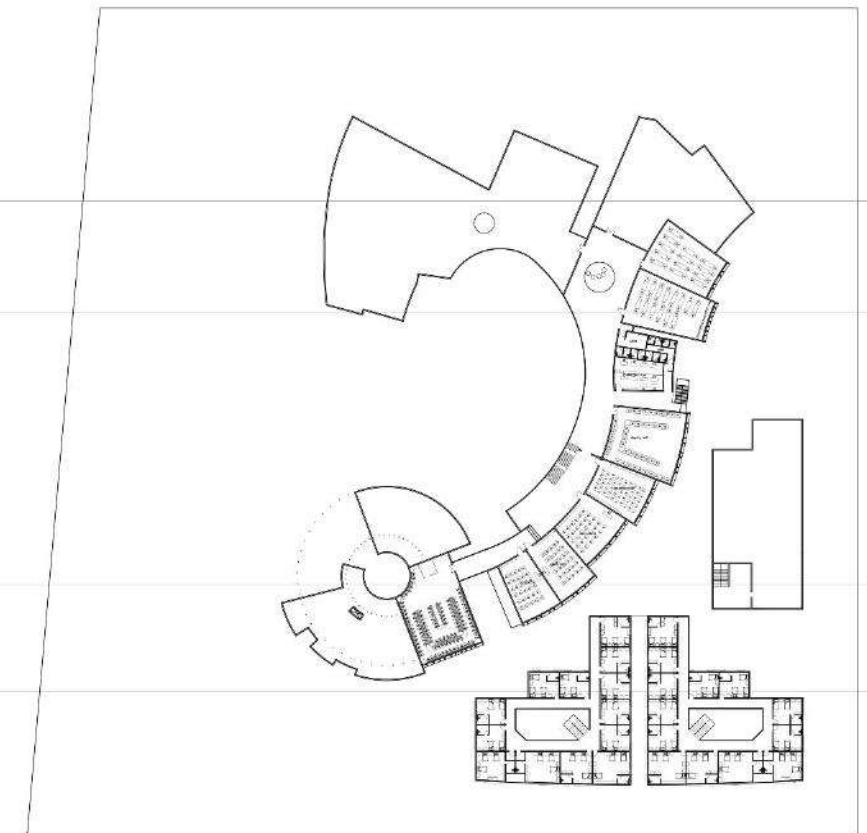
THE ZONING OF BLOCKS ARE PLACED ON THE WORK FLOW OF THEM AND THE WIND DISTRIBUTION. SUNSHADE IS PAINTED WITH 7 COLOURS TO REPRESENT THE JOY OF THEM INSIDE. SUNSHADE ALSO REDUCES THE DIRECT HEAT OVER THE WALL. STUDENT STUDY CENTRE HAS MORE EXPOSED AREA WITH CLOSED TEMPERED GLASS. THE ACCESS FOR FIRST FLOOR WITH GREEN RAMP, INSIDE HAS CENTRAL INTERACTION SPACE, MUSEUM, STORE, STATIONERY, MAKES THE STUDY CENTER AS THE BUSINESS CENTER FOR STUDENTS WORK, AMPITHEATRE AT THE CENTER DESIGNED BASED ON THE AIR FLOW WHICH INCREASES THE AUDIBILITY FROM THE STAGE, WITH GREEN STEPS, AND THE BLOCKS AROUND THE CENTRAL ZONE IS SHADED ALL TIME DUE TO THE SURROUNDING OF THE BUILDING, AND WATER BODY HUMIDS THE AREA MAKE IT COOL AND PEACE. SO THE TOTAL CAMPUS BE AS THE JOY, COLOURS, LIGHT & COMFORTABILITY.



SITE PLAN



GROUND FLOOR PLAN



FIRST FLOOR PLAN



Barrier Wall - Polycarbonate Panels



Open Air Theatre - Aqua Pond Acoustics



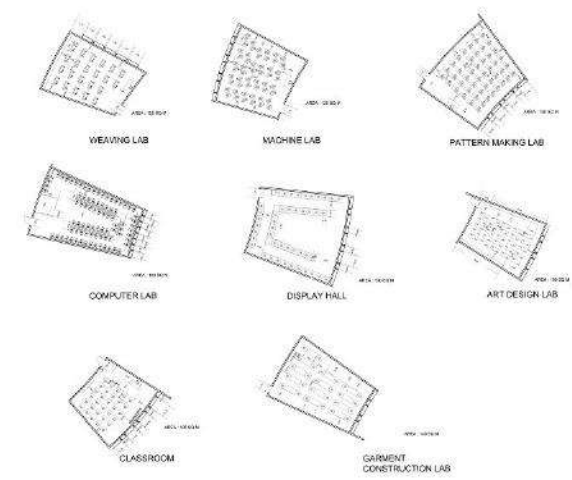
Interaction space - Canteen, Hostel



Water Pond - Front Facade

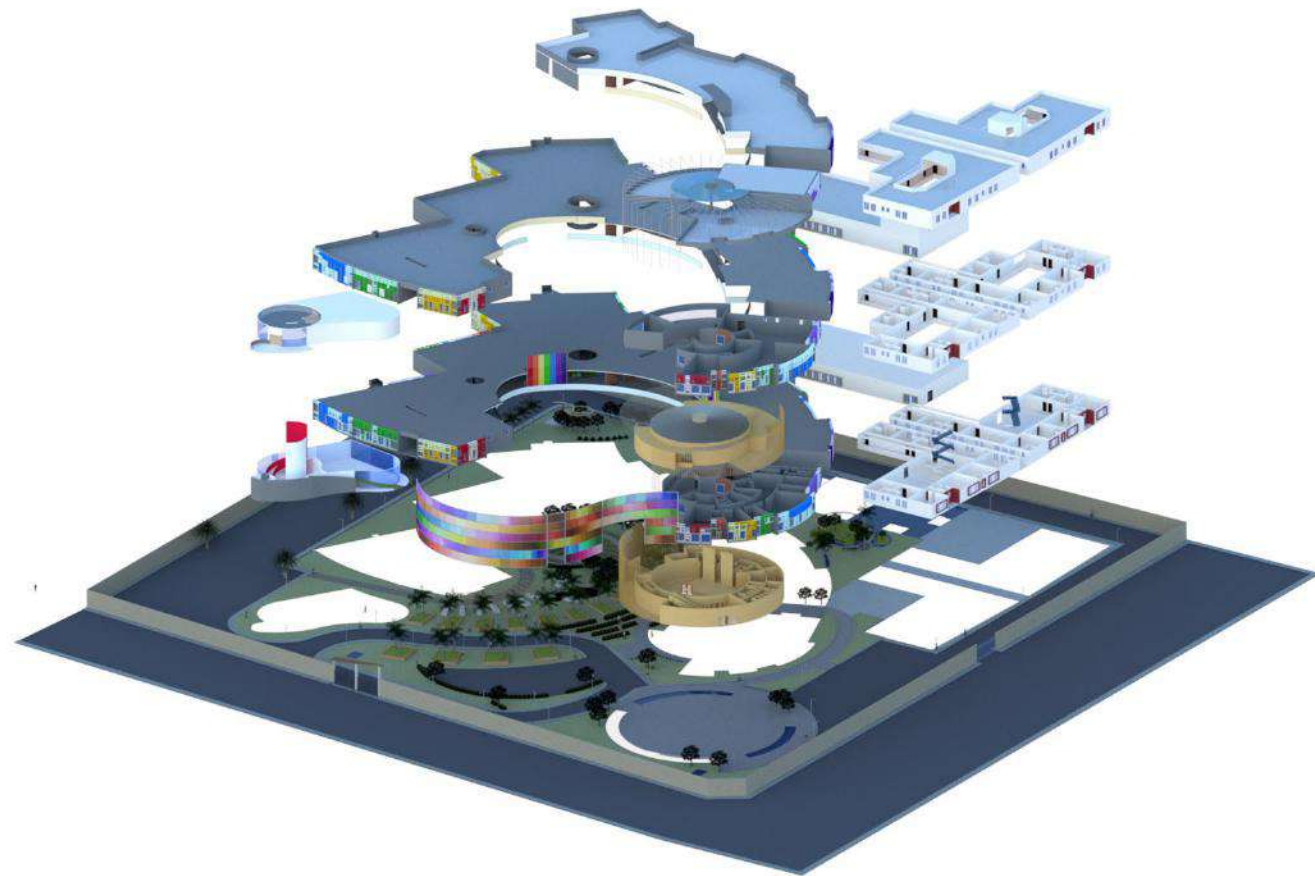


Interaction space - Admin, Academic block





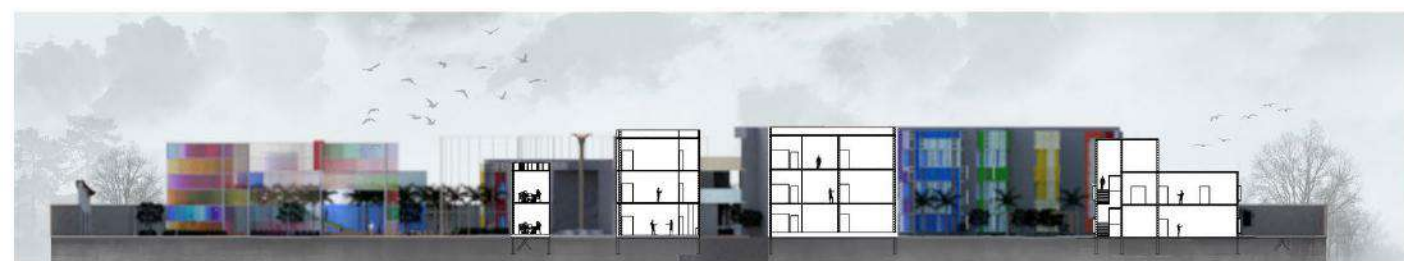
# NIFT CAMPUS DESIGN, BANGALORE, INDIA.



Axonometric View



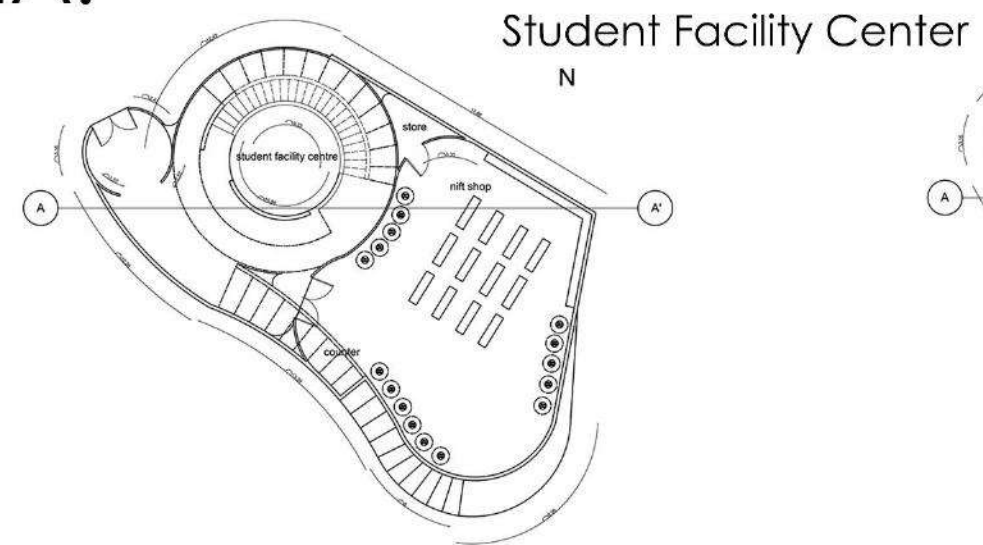
Section A-A'



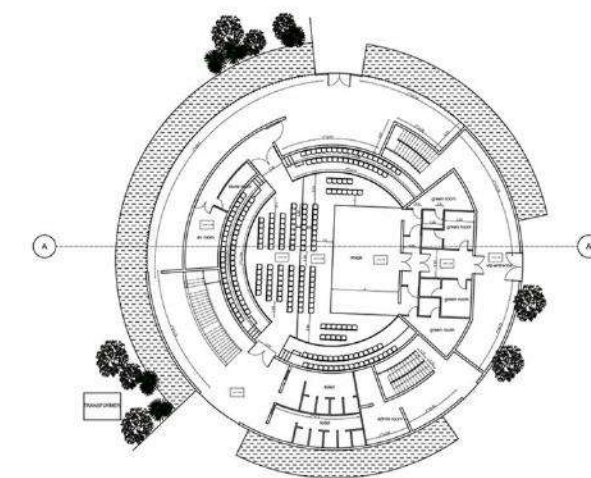
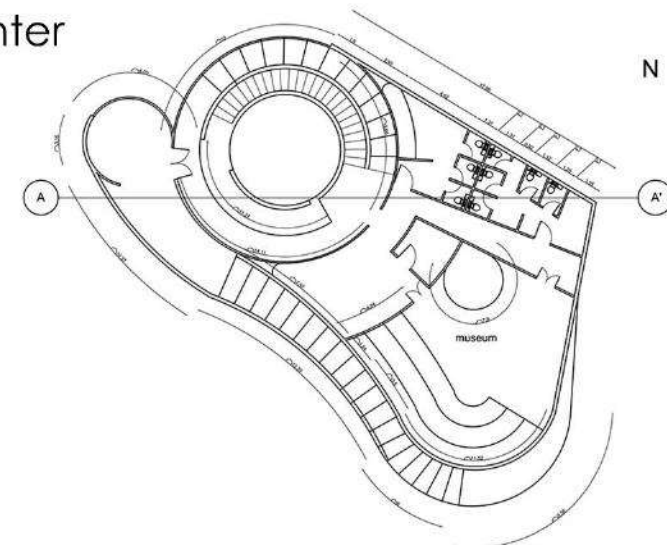
Section B-B'



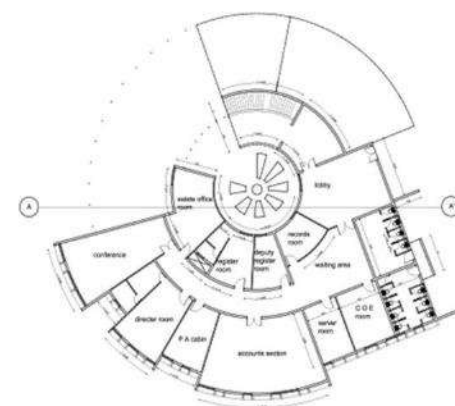
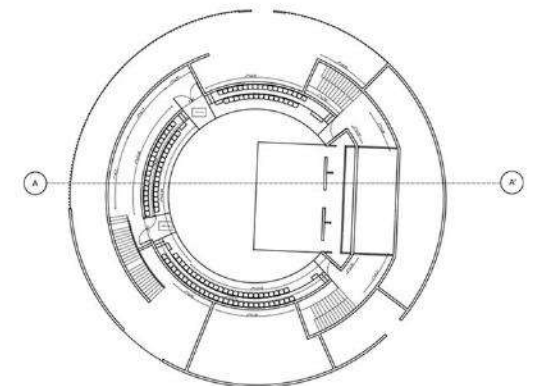
Section C-C'



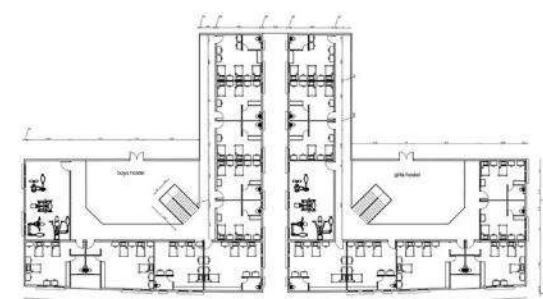
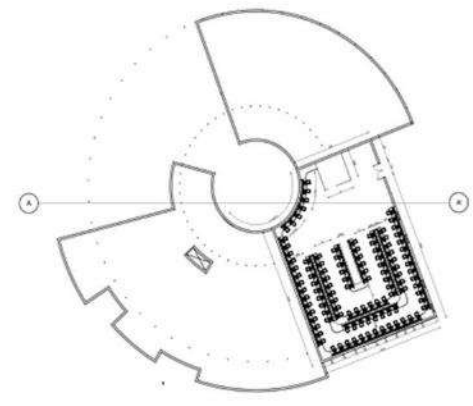
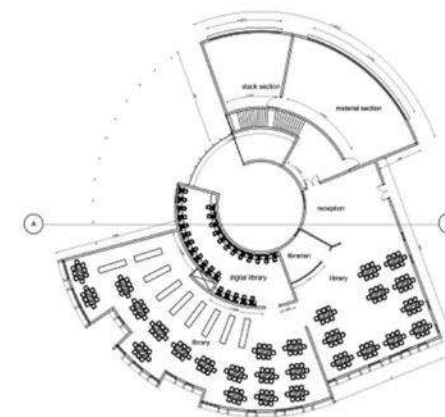
Student Facility Center



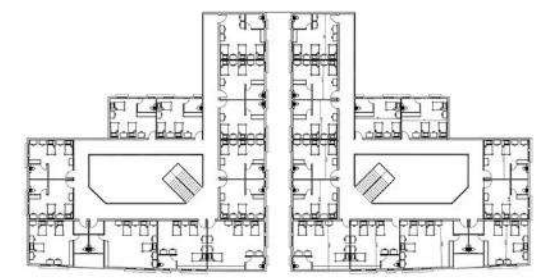
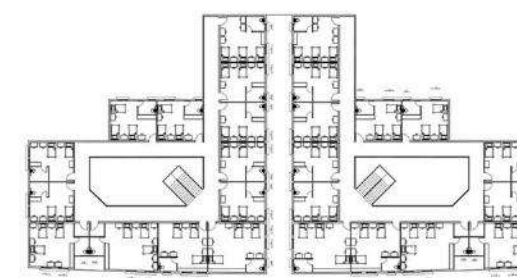
Auditorium



Resource Center



Students Hostel





# RENDERED VIEWS OF THE NIFT CAMPUS, BANGALORE





THANK YOU