

Halley Roy.

# Halley Roy.

## EDUCATION.

Bachelor of Science in Interior Design Accredited by CIDA—  
Mississippi State University,  
Starkville, MS  
GPA: 3.9/4.0  
Graduation August 2023

## CONTACT.

703.407.2655  
halleyroy00@gmail.com

## CONNECT.

[LinkedIn.com/in/halley-roy](https://www.linkedin.com/in/halley-roy)  
[@DesignedbyHalley](https://www.instagram.com/DesignedbyHalley)  
[@HalleyRoy](https://www.instagram.com/HalleyRoy)



## EXPERIENCE.

**Interior Design Intern**, Washington, DC — DLR Group *May 2022 - August 2022*

- Detail design elements within Revit for construction document sets
- Select finishes and furniture for K-12, higher education, and justice & civic design

**Teaching Assistant Digital Design**, Starkville, MS — Mississippi State University *January 2023 - Present*

- Assist interior design and architecture students in learning the Adobe suite by aiding in class and holding outside help sessions

**Roadrunner/Student Recruiter**, Starkville, MS — Mississippi State University *February 2020 - Present*

- Provide regularly scheduled tours to prospective students and their families
- Fulfill weekly service hours preparing for campus visits by hand writing over 150 postcards a semester, & making trips to the Welcome Center

**Dance Teacher**, Starkville, MS — Academy of Competitive and Performing Arts *August 2021 - Present*

- Choreograph ballet, tap, hip hop, and jazz dances for students
- Communicate/teach proper dance vocabulary in conjunction with movement

## SKILLS.



# RESUME.

## HONORS.

**President's List Scholar** Fall 2019, Spring 2020, Fall 2020, Spring 2021, Fall 2021, & Fall 2022

**Academic Non-Resident Scholarship** 2019, 2020, 2021, 2022, & 2023

**Non-Resident Alumni Scholarship** 2019, 2020, 2021, 2022 & 2023

**MSU 1878 Society** - Inducted for giving over 78 tours as a Roadrunner

## LEADERSHIP.

**Student Association Senator - Elected by Student Body**

Mississippi State *2021-2022*

**Director of Foundation Lectureship in Values and Ethics**

Delta Gamma Fraternity *2021-2022*

**Director of Diversity, Equity, and Inclusion**

Delta Gamma Fraternity *2020-2021*

## PROFESSIONAL DEVELOPMENT.

**Design Leadership Foundation Workshop** January 2023

**LEED Certification Preparation** Spring 2022

**Lunch & Learn FF&E Professionals** March 2021

## RELATED COURSES.

3D CAD Modeling (Revit)

Auto CAD for Interiors

Detail & Construction Documents

Digital Design (Adobe Suite)

Environments for Special Needs

Furniture Design for Interiors

Hand Rendering for Interiors

Interior Design Graphics (Hand Drafting)

Materials & Textiles for Interiors

Color & Lighting

## SERVICE.

**Brickfire Mentoring Program**

*Starkville, MS* Volunteer 2020-2022

**Service for Sight** *Starkville, MS*

Volunteer/Contributor 2019-Present



Google Suite



Microsoft Office



Revit



Sketchup

# Contents.

**01**

*Corporate.*

**02**

*Hospitality.*

**03**

*Healthcare.*

**04**

*Senior Living.*

**05**

*Technical.*

**06**

*Creative.*

01

---

**Corporate.** *Next*



color palette

# Next

\* Innovation \* Technology

Design Drivers

- Space
- Technology
- Lighting
- Wellbeing
- Acoustics + privacy?
- Robotics
- Mental health

Variation in types of space

Contrast of Light + dark

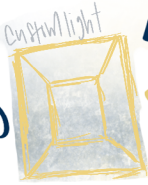


Common space vs Personal space

## LIGHTING

- Medium Lighting
- Low Lighting
- Circadian rhythm

## GLOW



## XII

Contrast  
Sharp Lines and Curves

# Midnight



dreaming  
Up your best ideas

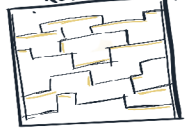
Waking up in the middle of the night

- Sleep pods
- Wellness rooms
- Idea panels

-24 hour open Office - retail display

## CLOCK HANDS

Sharp angles



## SHAPE

Circular Clock face  
Straight angle Lines

Open toe flock with light



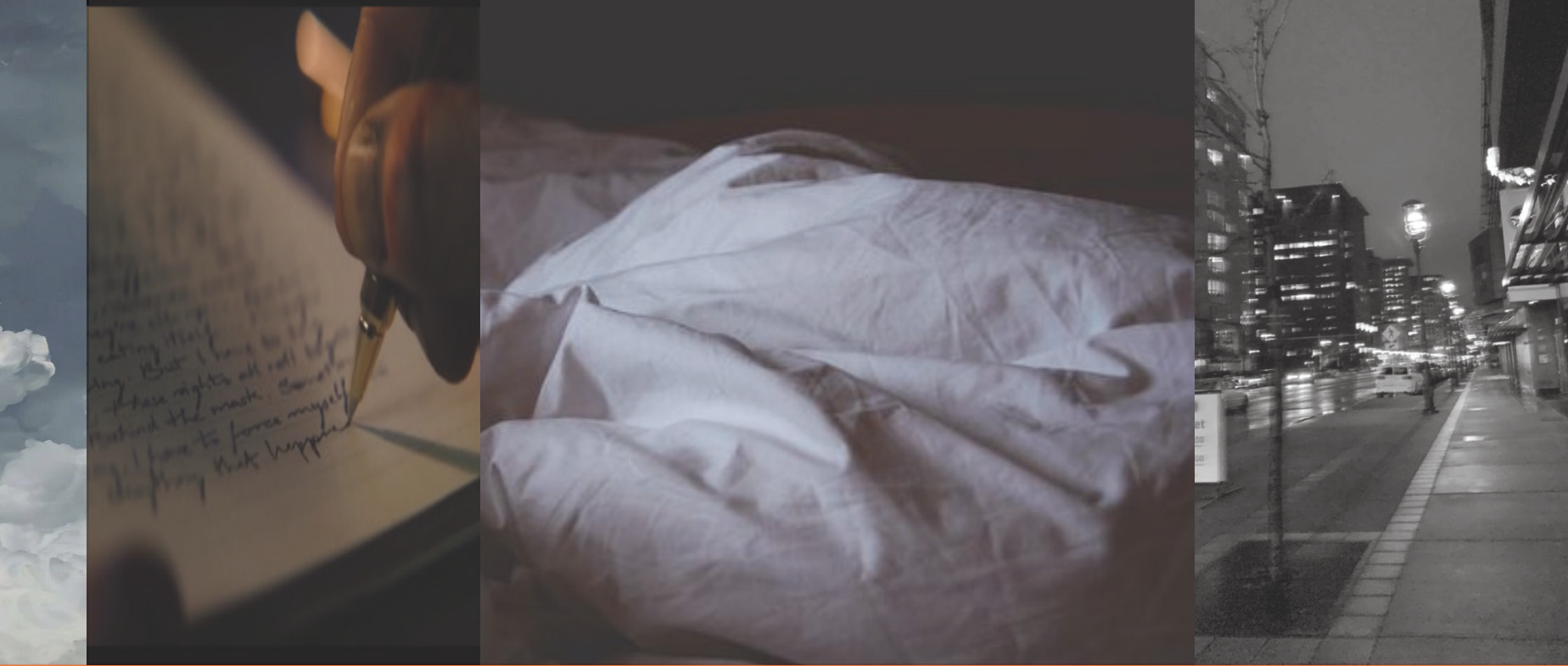
reception desk sketch



## Description.

Next, a robotic technology company uses Steelcase furniture in the design solution for their commitment to **sustainability**, **diversity**, and **innovation**. Midnight - restlessness meets creativity & imagination runs wild.





Next

**Project Type:** Individual Senior Level

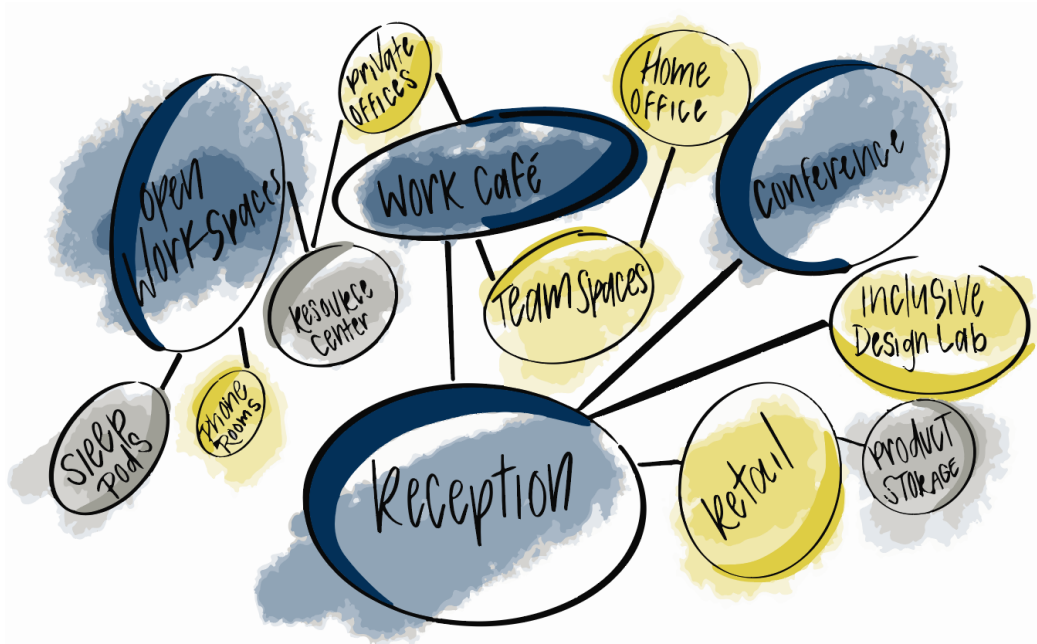
**Location:** Boston, Massachusetts

**Project Size:** 1 Level 12,000SF

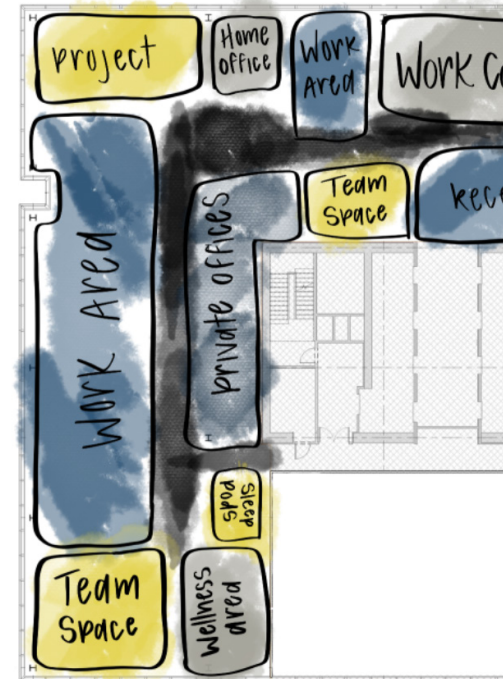
**Software Used:** Revit, Enscape, InDesign, Photoshop

# Programming Development.

## Relationship Diagram.



## Bubble Diagram.



### SOCIAL.

Collaboration establishes human connection, promoting productiveness.

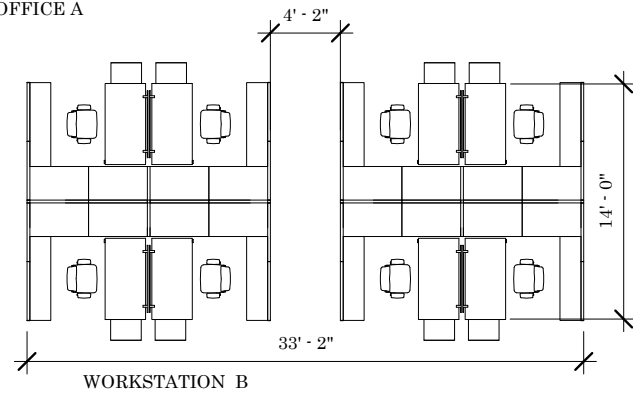
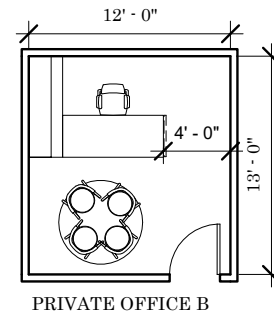
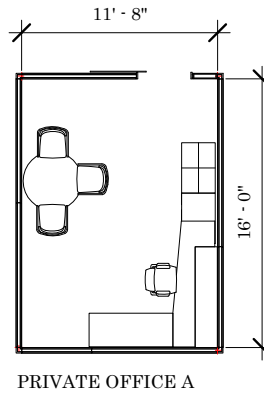
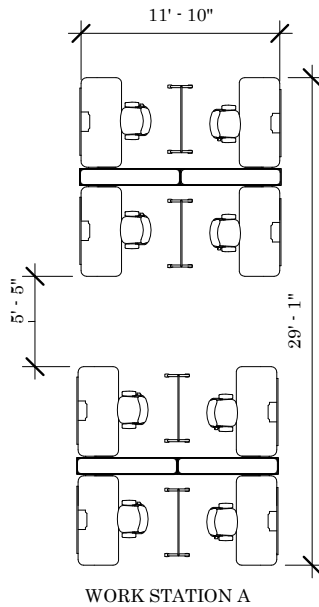


### WELLBEING.

Flexible environments, mental health promotion and empathetic leadership.



## Prototypical Development.



### FOCUS.

Soft color palette limits distractions, maintaining attention to work.



### PRIVACY/ACOUSTICS.

Promote openness and seclusion balancing collaboration and individualism.

# Floor Plan.

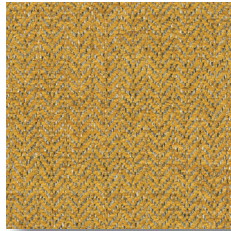


**Level 6 Floor Plan NTS.**

## ARCHITEX FABRICS AND BENTLEY MILLS FLOORING.



Carpet Tile  
Expo Hall  
Metro Card 400081



Upholstery Fabric  
Mount Mckinley  
Amber



Upholstery Fabric  
Carat  
Tidal



Carpet Tile  
Course of Action  
Onyx 900111



Luxury Vinyl Tile  
Colonnade  
Post Modern 802123



Koroseal  
Wallcovering

## STEELCASE FURNITURE.



Work Station



Office Chair



Modular Furniture



Lounge Furniture



Phone Room



Hightop Table

# Reception.

## **Desk.**

Night sky with stars is simulated through perforated metal and moon-like ceiling panel.

## **Ramp.**

Electrical & mechanical pieces run 9" below the office floor for ramp transition.

## **Lighting.**

Simulation of clock hands and time through use of light over reception desk.

## **Ceiling.**

Circular ceiling encapsulates the idea of time with lighting feature reflecting a pendulum.





Next

Next



# Work Cafe.



**Ceiling.** Repetition of star ceiling feature uses gold metal and LED lighting creating internal night sky.

**Wall Design.** Lightening inspired wall creates moody contrast inducing movement.

# Cabinetry Elevation.

## Lighting.

Star - like pendent lights reinforces night theme.



# Home Office.

## Design.

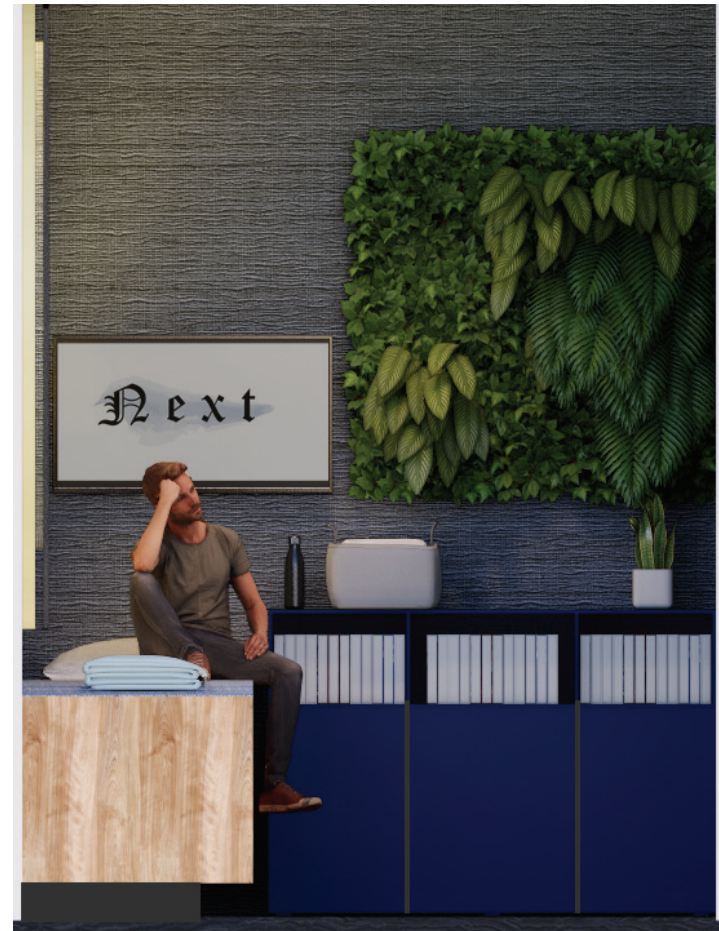
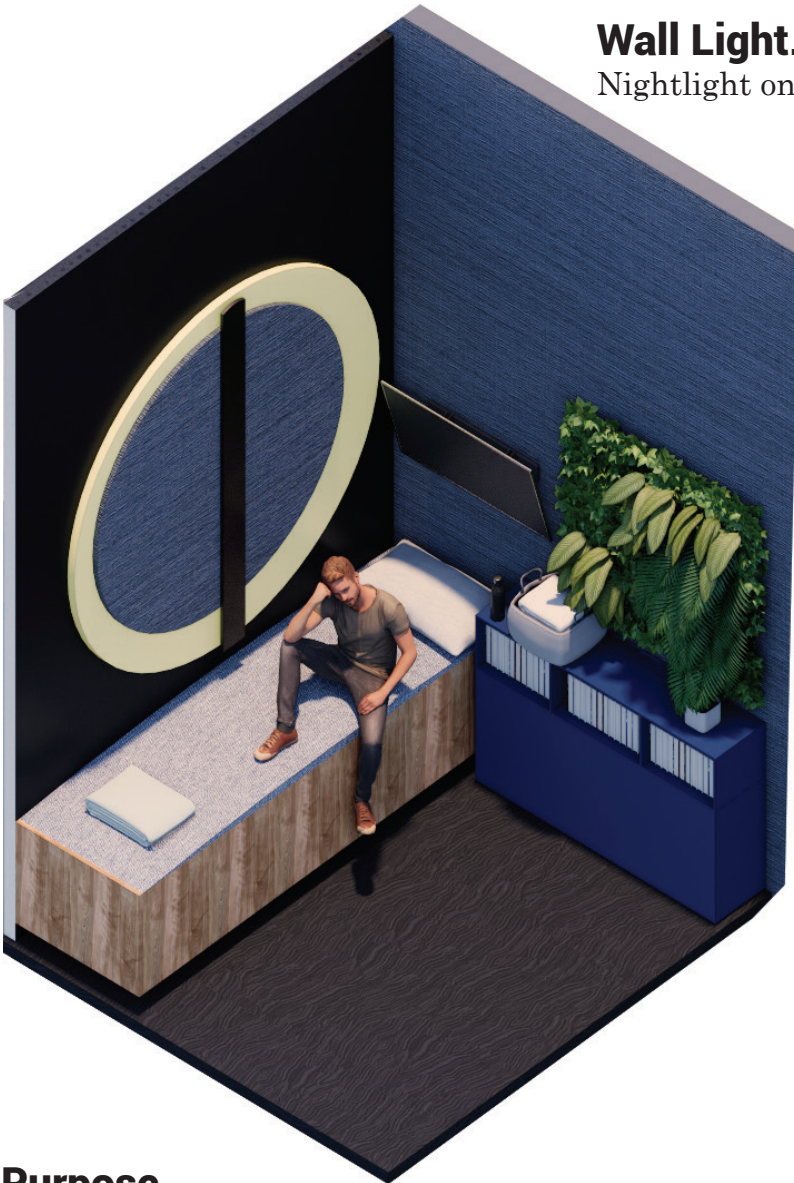
Star inspired gold and midnight sky inspired navy create contrast and weave branding throughout the space.



# Sleep Pods.

## Wall Light.

Nightlight on wall incorporates soft glow LED technology for focus and relaxation.



## Purpose.

Oasis space influenced by sleep and dreams, creates tranquility and restoration.

# Coffee Bar.





### **Coffee Space.**

Rejuvenation and community created by midnight inspired table reflected in Roman numeral XII.

### **Work Stations.**

Moon inspired gold workstations utilize crescent shape creating privacy and dedicated work space.

### **Ceiling Panels.**

Dark cloud suspended ceiling panels create sensation of a night outdoors.

02

---

**Hospitality.** *The Gentry*

# THE GENTRY

boutique hotel

*gentry*

Newport  
Rhode Island  
\* Coastal-seaside  
\* Picturesque  
\* Smiling Capital  
\* Origin of US Colony

GRAND STAIR

art deco

THE GIN MILL

1920's  
Haw

The YACHT CLUB

The MARCEL

spa  
relaxation  
lights  
cherry  
the bar  
essentially

Barber  
Speakeasy

THE PEARL

Oyster  
luxury  
view  
dinner  
banquet

Carrollway  
Cafe

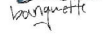
comfort

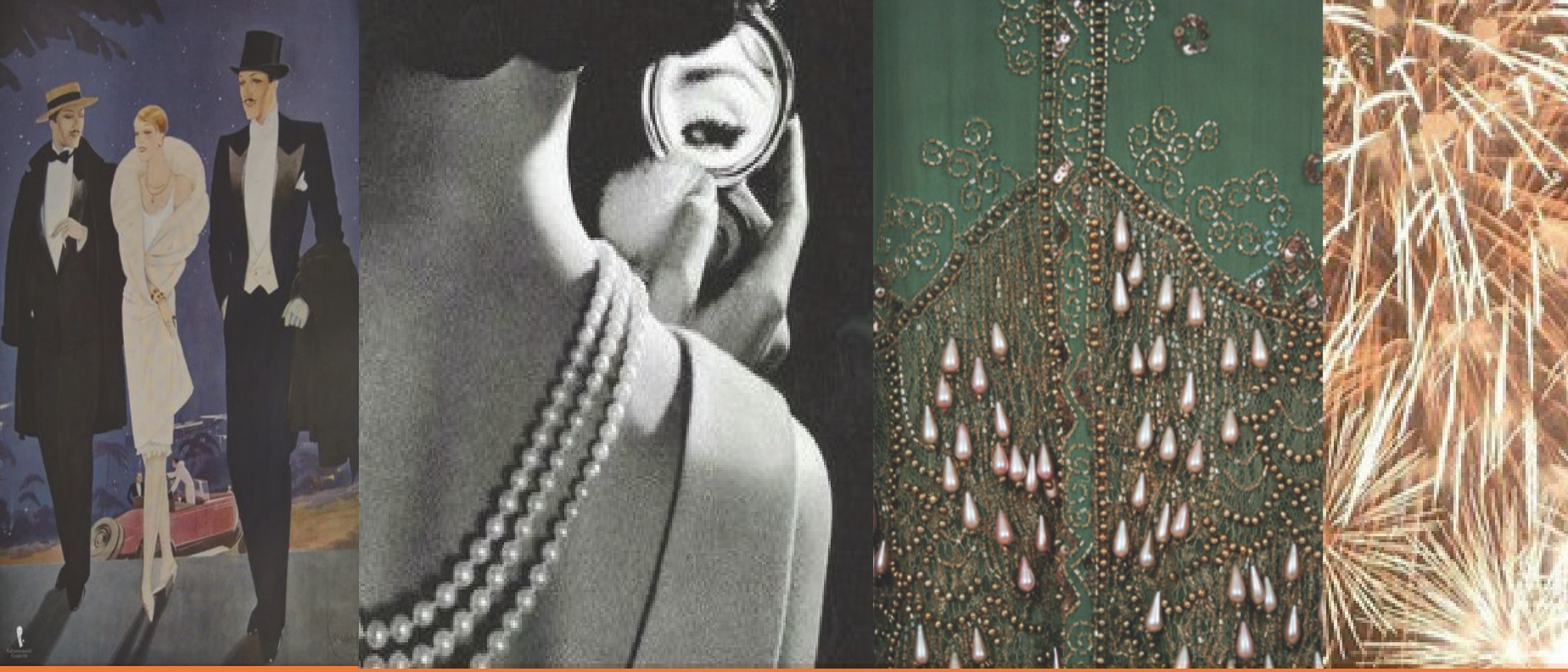


Art Deco - 1920's - Cars  
Jazz - prohibition, Klappers - Harlem

lighting

Women's rights

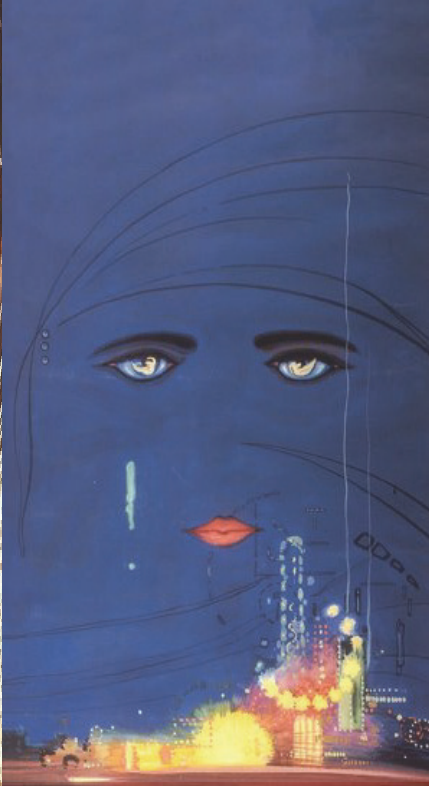




## Description.

The Gentry boutique hotel is inspired by the 1920s Great Gatsby. The Gentry takes hidden symbolism within the literature and turns it into Art Deco waterfront luxury.

EST. 1920  
THE  
GEN  
Boutique



2022

# THE TRY

e Hotel

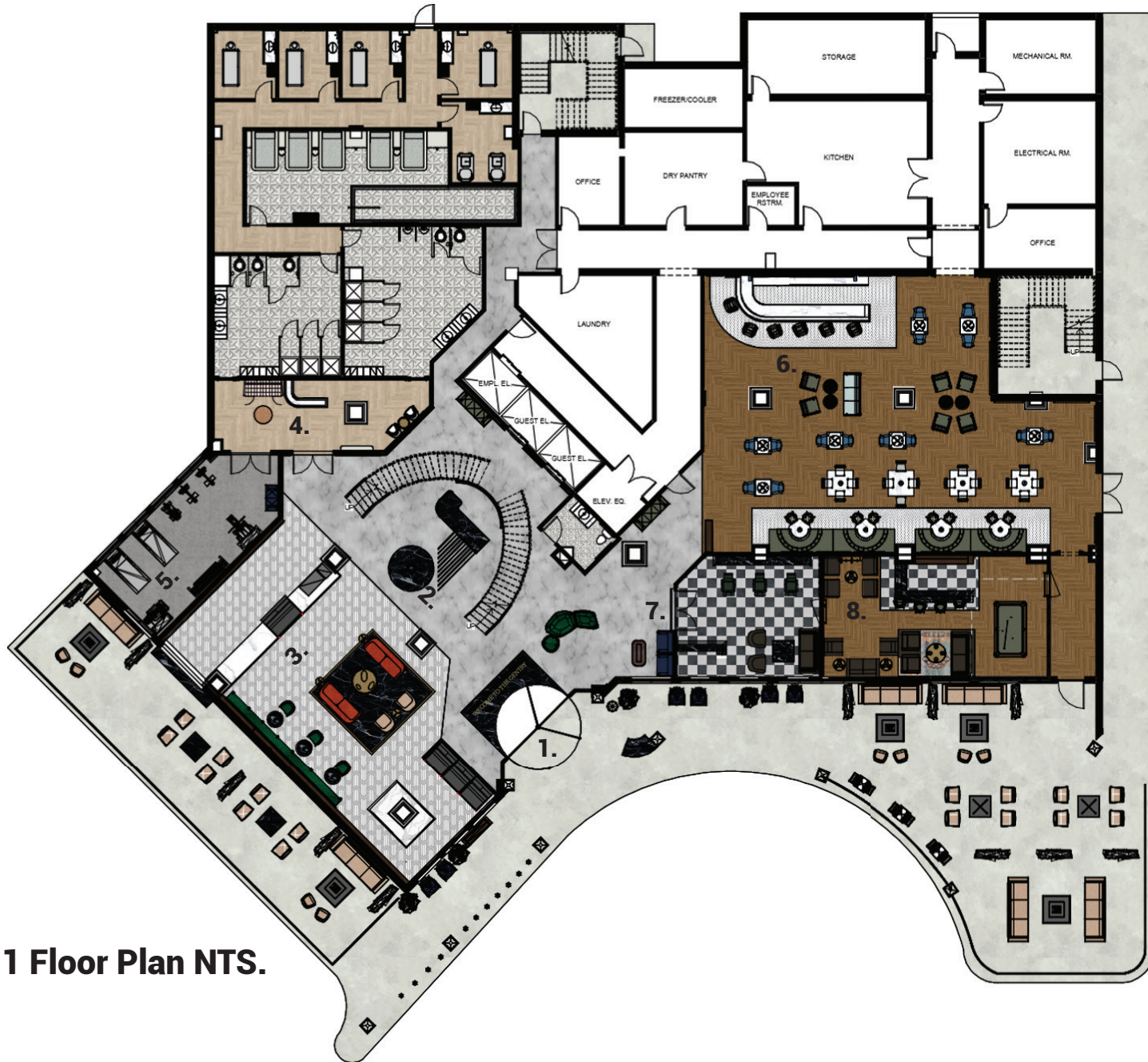
**Project Type:** Group Senior Level

**Location:** Newport, Rhode Island

**Project Size:** 18 Levels 40,000SF

**Software Used:** Revit, Enscape, Photoshop, InDesign, Microsoft Teams

# Level 1 Floor Plan.



## Key.

1. Entrance
2. Lobby
3. Coffee Bar
4. Spa



Scan For a

Level 1 Floor Plan NTS.

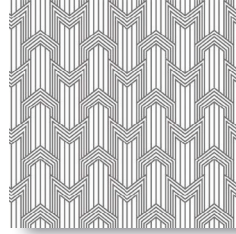
# Design Elements.

- 5. Workout Facility
- 6. Restaurant
- 7. Barber
- 8. Speakeasy

## Materials.



Floor Tile  
LVT Woven  
Mocha



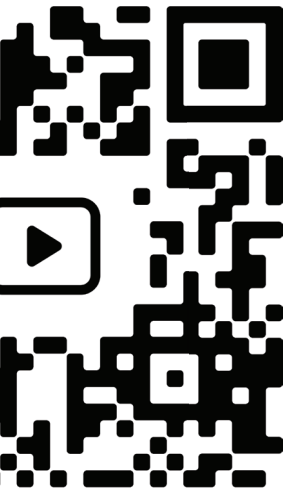
Floor Tile  
Dynamic Art Deco  
Black and White



Flooring  
Marble  
White Black Vain



Wallcovering  
Feathered Print  
Black & White



Walk Through.

## Individual Brands.

The Marcel - derived from the 1920s hair style, the spa is **uniquely glamorous**.

The Carraway - motivated by Nick Carraway's woodsy cottage, the coffee shop is **charismatically cozy**.

The Pearl - representing the traditions of the east coast, the restaurant is **elegantly timeless**.

The Yacht Club - drawn from classic Rhode Island sailing, the speakeasy is **curiously magnificent**, featuring cuts and cocktails.

Lobby.





### **Grand Stair.**

Custom stair rails are intricately designed for the grand stair, consistent with 1920s inspired pattern.

### **Desk.**

Elongated reception desk incorporates black marble and rectangular gold elements creating intrigue and sets the tone for guests' stay.

### **Chandelier.**

Custom geometric lighting fixture represents elements of space and light through repetition of Art Deco shape and gold color.

# The Carraway Co.

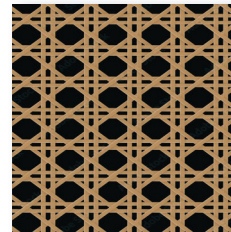
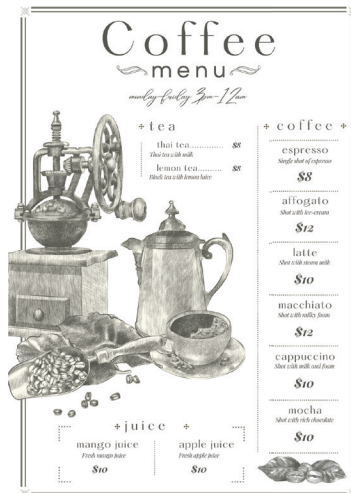
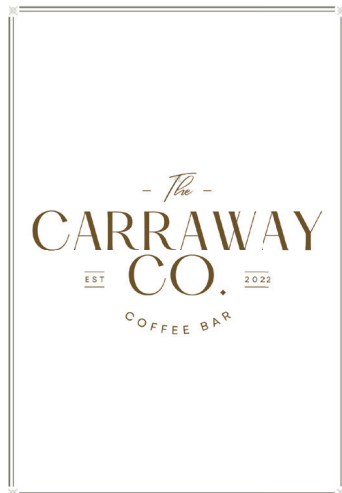
## Casework.

Arch casing along back wall introduces the motif of curvature. The casing uses dark wood and natural cream tones, portraying Nick Carraway's cottage.

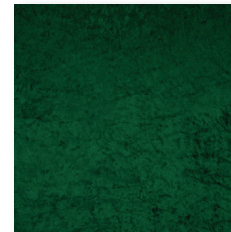
## Window.

Whimsical side window adjacent to coffee bar allows for walk-up service connecting th Gentry to the Newport community.

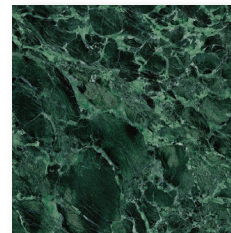
## Branding Supports.



Surface  
Woven Sisal  
Natural



Upholstery Fabric  
Crushed Velvet  
Emerald



Solid Surface  
Serpentine  
Emerald & Black



Wallcovering  
Hummingbird  
Dark Green





# The Yacht Club Barber.





### **Secret Door.**

Within the custom casework, a door from the barber shop conceals a prohibition style speakeasy that serves as a private dining area and bar.

### **Artwork.**

Original artwork depicting 1920s barber shops featured above casework.

# The Yacht Club Speakeasy.

## Custom Bar.

Mahogany shelving space gestures back to the main lobby while also setting the intimate mood & relaxed space.

## Wall Details.

Rectangular design motif creates intricate patterns that reflect both a 1920s style and a nautical inspired design feature.

## Lighting.

Combination of drop down pendent lights, wall sconces, and integrated LED strip lighting create an ambiance within to set the secretive tone.





The YACHT CLUB  
EST. 1922

# Guest Corridor & Elevator Lobby.

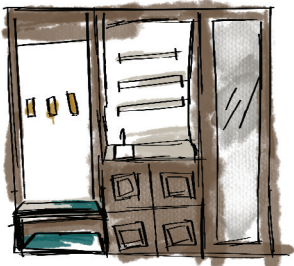
## GUEST ROOM SKETCHES.



Bathroom Vanity



King Bed



Entry Built-In



ELEVATOR LOBBY.



Wallcovering  
Custom  
Multi Swatch



# Guest Level Floor Plan.



**GUEST CORRIDOR.**

**Level 3 Floor Plan NTS.**

# Guest Rooms at The Gentry.



## Furniture.

Custom-built for peaceful, elegant design. King-size canopy bed frame establishes an elevated sense of tranquility. Casework in entryway grounds storage space and creates home-like feeling within guestroom.



03

---

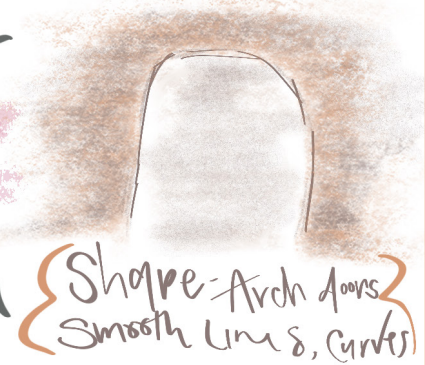
**Healthcare.** *Salt*

location  
Salt Lake City  
UTAH

- Salt fields - shape
- Mountains - landscape
- Lakes - water features

# Salt.

## dermatology : spa



Shape - Arch doors  
Smooth lines, curves

Connection to Community  
serve Salt Lake

## Salt therapy

- floatation
- Light
- Juices

signature

wayfinding

## Relaxation

- Rejuvenation
- Tranquility
- Peace
- Retreat

Topographic Lines  
yoga

Mind Body Connection

## Treatments

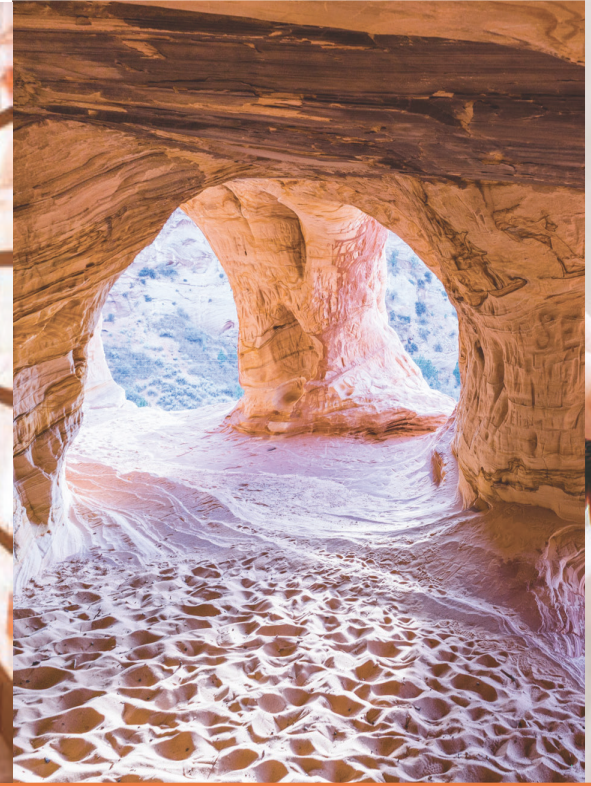
- facials
- Salt floatation
- Massages

texture wall decor

wayfinding - directional  
Materials

Retreat

- Copper
- Wood
- Salt blocks



## Description.

SALT, a dermatology facility and spa, specializes in salt therapy to aid skin **regeneration** and **restoration**. The facility helps mental and physical health with the use of salt cave yoga, sensory deprivation tanks, and a salt sauna. **Curvature, natural color, and textures** recreate the topography and landscapes connected to Utah and the salt plains.





**Project Type:** Group Junior Level

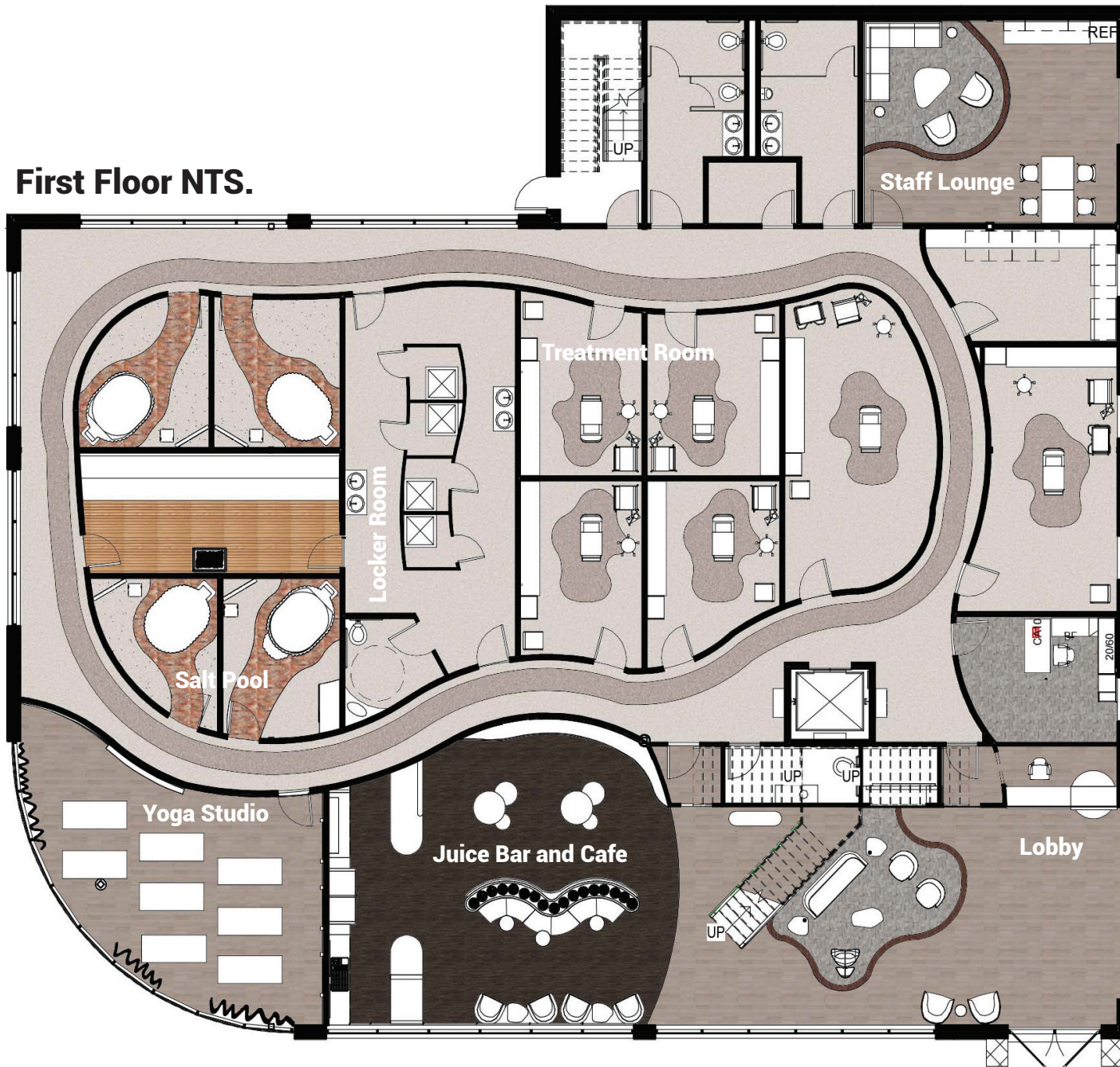
**Location:** Salt Lake City, Utah

**Project Size:** 2 Levels 12,000SF

**Software Used:** Revit, Enscape, InDesign, Photoshop, Microsoft Teams

# Floor Plan Level 1.

## First Floor NTS.



### BIOPHILIC DESIGN

Reduction of stress, enhanced clarity of thought lead to experiential forms and patterns resembling nature. Contoured arrangements with



### DIVERSITY, EQUITY

Textured and contrasted walls for visually impaired, varying shapes and sizes of bariatric furniture, Signage for accessibility, and ergonomic seating for patients.



### LIGHTING.

Natural daylighting promotes the quality of health and mental well-being. LED antibacterial lighting to kill germs.

# Floor Plan Level 2.

## GN.

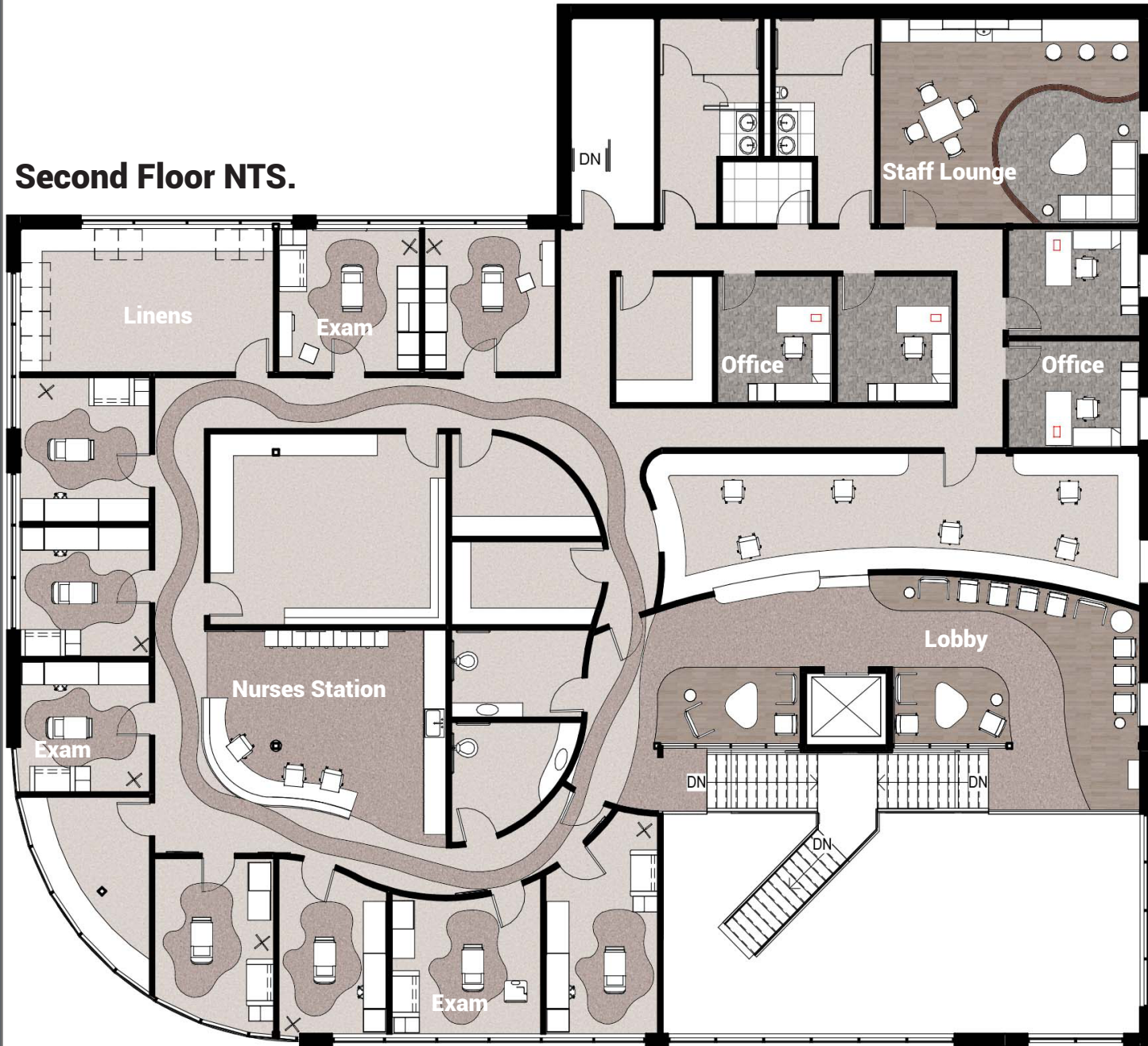
acement of creativity, and  
edited healing. Biomorphic  
ole nature, referencing to  
thin Utah.

## TY, & INCLUSION.

alls & surfaces for visually  
and sizes of furniture &  
for wayfinding, wheelchair  
ic furniture for staff and

roduces overall higher  
ood. Implementation of  
ng eliminates spread of

## Second Floor NTS.



## Exterior Materials.

Copper window treatments utilize local materials enhancing the community SALT serves.

## Signage.

Custom signage made of salt rocks mined locally in Utah.



*Front Perspective.*



# Nurses' Station.

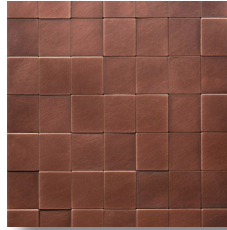




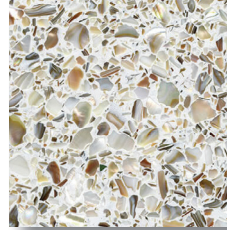
## MATERIALS.



Wall Covering  
Byron Opal  
National Solutions



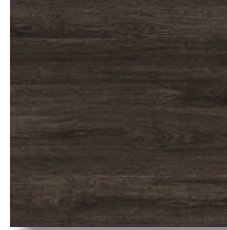
Metal  
Copper  
Locally Sourced



Solid Surface  
Terrazzo Exotic  
Formica



Luxury Vinyl Tile  
Light Beige



Sheet Vinyl Flooring  
Shaw Contract

### **Corridor.**

Corridor around the nurses' station and rooms incorporates a wooden lit alcove to create a way-finding tool both above and below to match the guided flooring material.

### **Ceiling.**

Wave textured ceiling softens the lines created to interpret the idea of the salt ripples seen in Utah.

# Yoga Studio.





### **Shelving.**

Curvature creates designated space for personal items during classes and simulates the stretches of sand and salt in the Utah landscape.

### **Ceiling.**

Rippled ceiling inspired by water channels within local environment with light fixtures to introduce soft, natural light.

### **Column.**

Arc where the column meets the ceiling allows necessary architectural features to be seamlessly woven within the concept for design purposes.

04

---

**Senior Living.** *Draft*





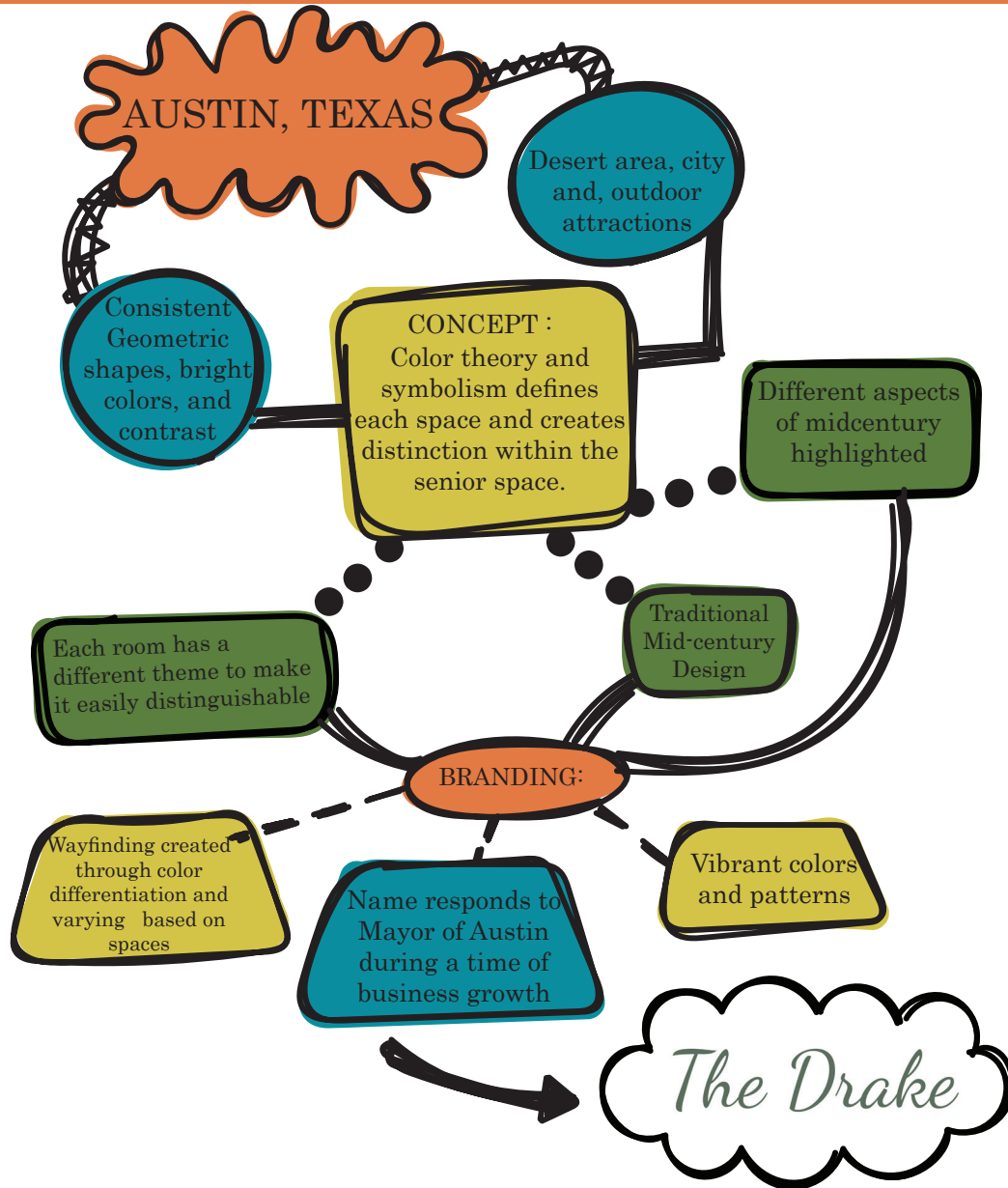
## Description.

Incorporating popular culture from the mid-century era, the Drake uses pieces of the most memorable aspects to specifically brand each space using color association for wayfinding and memory reinforcement. The Drake embodies a home-like environment and encompasses American history reflected in Austin's culture.

# The D



# Concept and Programming.



## ENGAGEMENT.

Promote wellness & independence, stimulate engagement and inclusive/accessible design.

## ENVIRONMENT.

Changes of scenery create positive feelings and engagement. Wayfinding, a tool used for visual aid of space and direction allows for easier navigation and independence.

## RECEPTION DESK.



# Floor Plan.

agement

wareness  
n and

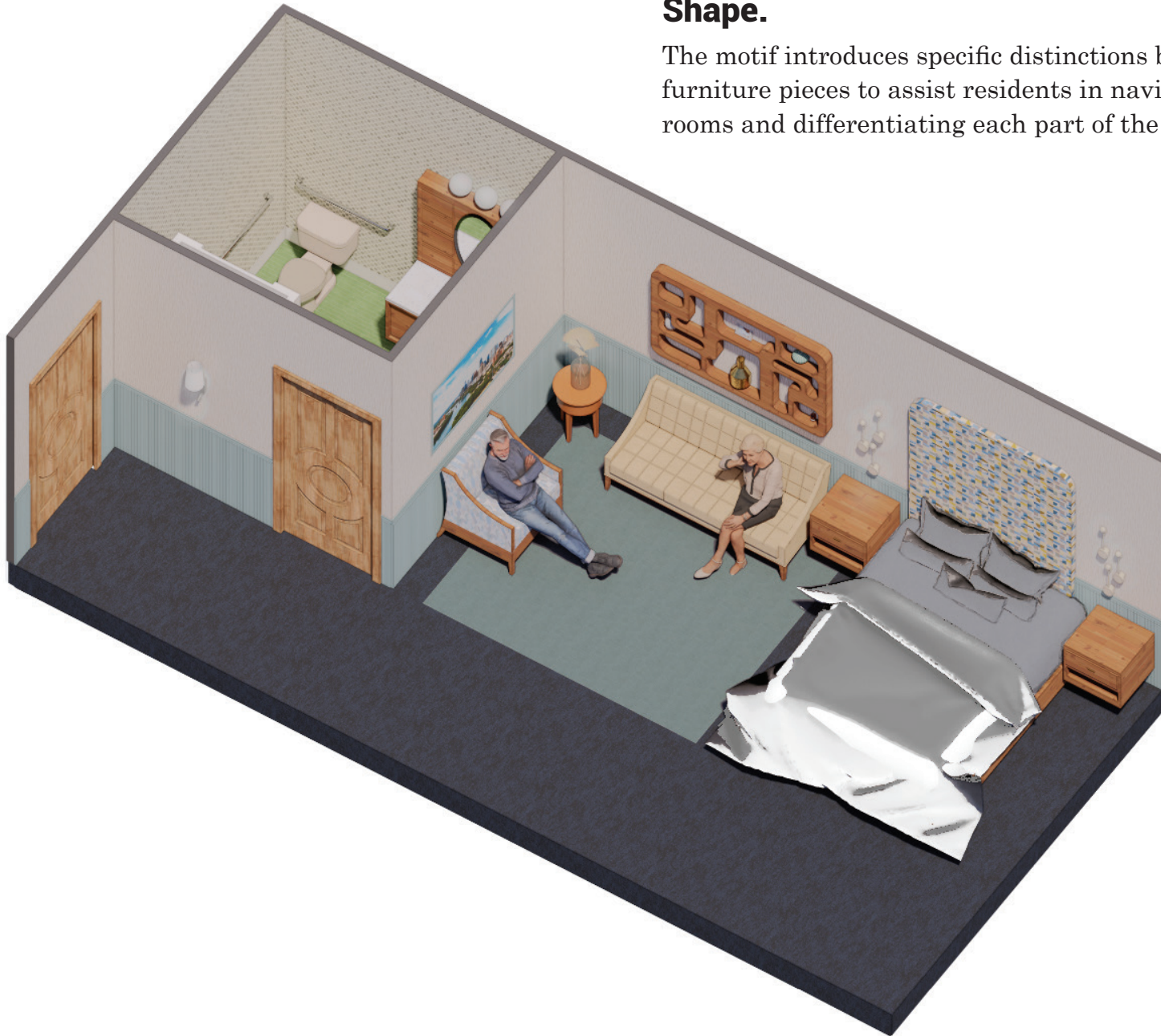


**First Floor Not To Scale.**

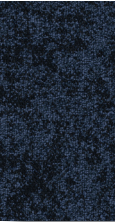
# Bedrooms.

## Shape.

The motif introduces specific distinctions between the furniture pieces to assist residents in navigating their rooms and differentiating each part of the space.



Floor Tile  
Emerald Green  
TileBar



Carpet Tile  
Navy Black  
Shaw Contract



Wallcovering  
Natural Cotton



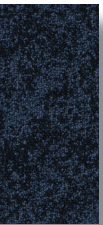
Upholstery  
Navy/Gold  
Maharam

## Color.

Blue, green, and yellow tones create feelings of security, safety, and harmony within the resident bedrooms.



green



e  
k  
tract



ng  
urves



7

# The Gardens.





## Purpose.

Outdoor garden provides serene space for residents and their families to relax. Green and orange indicate nature, youth, optimism, and health.



# Library.

## Purpose.

Yellow and golden tones create emotions of happiness, warm, and curiosity. The library implements all of these feelings through color of materials as well as a combination of natural and artificial light.



# Staff Lounge.

## Shape.

Mid-century modern features such as atomic structured light fixtures and geometric patterns create warm and home-like environment for staff to take a break from work.



05

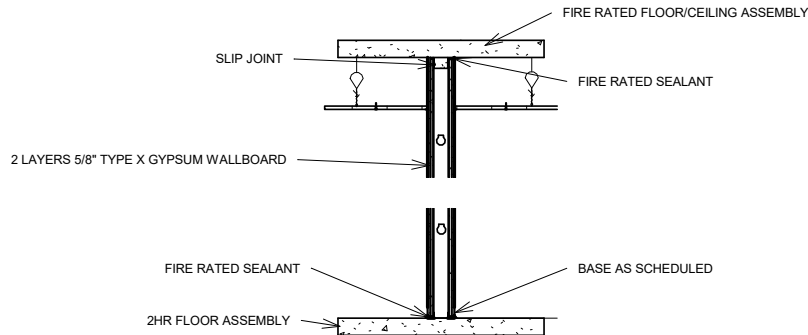
---

**Technical.**

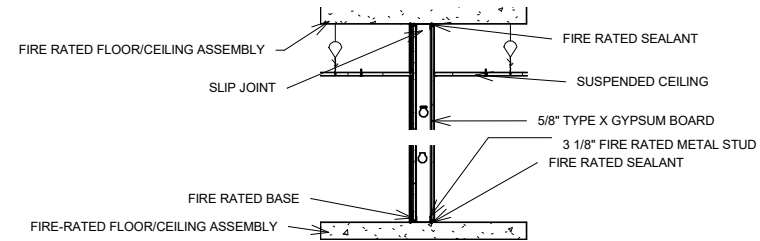


# Construction Documents.

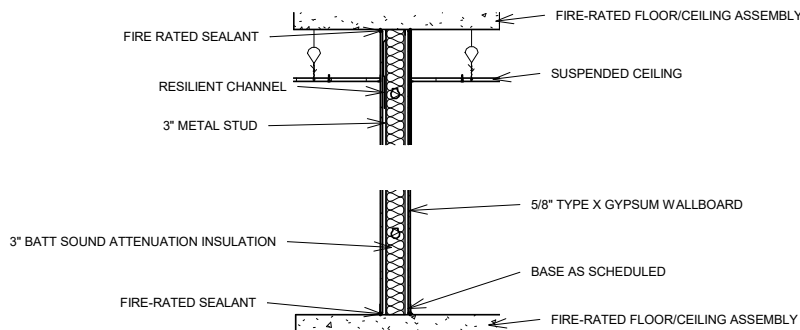
## PARTITION TYPES.



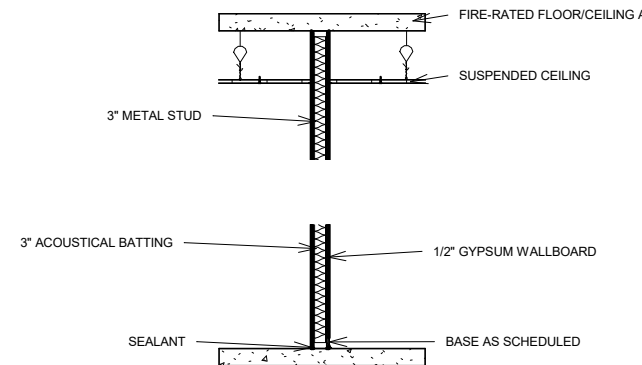
**2**  
A107 TYPE A PARTITION 2HR FIRE RATED  
3/8" = 1'-0"



**1**  
A107 TYPE C ACOUSTICAL PARTITION  
3/8" = 1'-0"

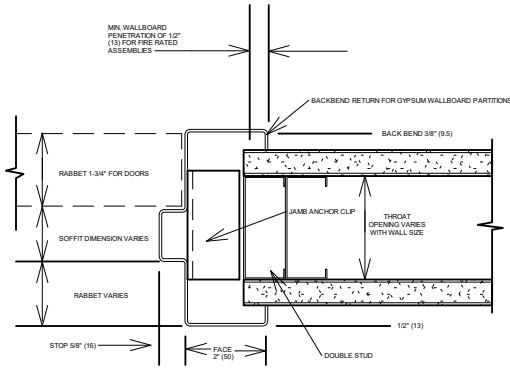


**3**  
A107 TYPE B 1HR FIRE RATED PARTITION ACOUSTICAL  
3/8" = 1'-0"

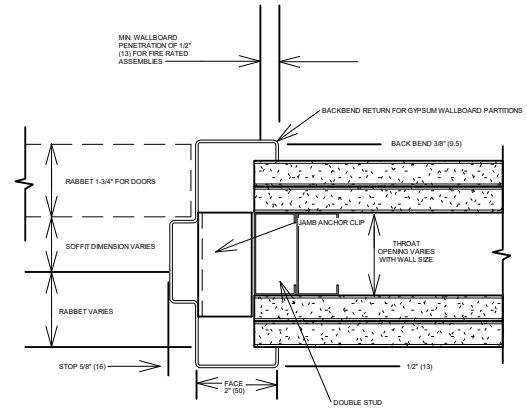


**4**  
A107 TYPE D PARTITION UNRATED ACOUSTICAL  
3/8" = 1'-0"

# FRAME AND HEADER SECTIONS.

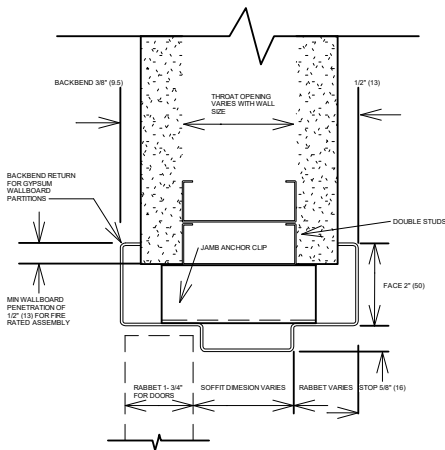


**1** STEEL DOOR JAMB 1HR  
A110 3" = 1'-0"

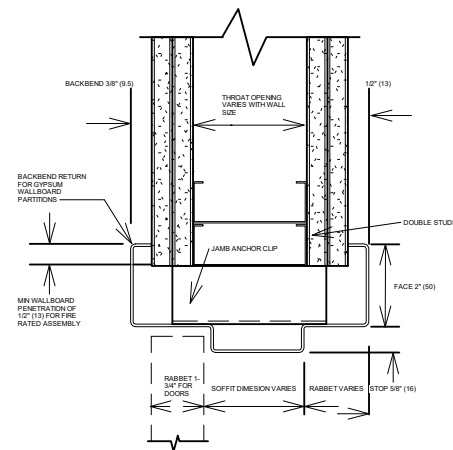


**3** STEEL DOOR JAMB 2 HR  
A110 3" = 1'-0"

ASSEMBLY



**2** STEEL DOOR HEAD 1HR  
A110 3" = 1'-0"



**4** STEEL DOOR HEAD 2HR  
A110 3" = 1'-0"

06

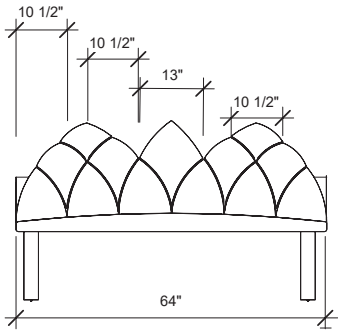
---

**Creative.**

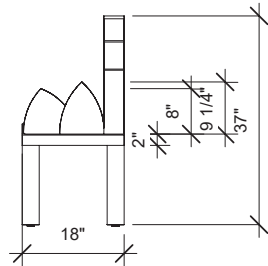


# Furniture Design.

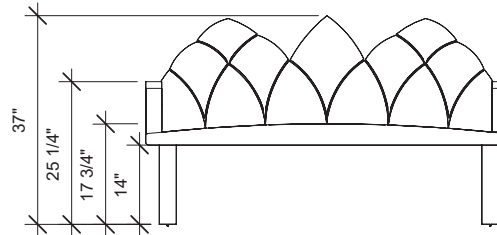
## SHOP DRAWINGS.



**Front.**



**Side.**



**Back.**



**3D Rendering.**

Flower petals are various in color and shape thus playing into the idea of maximalism. This bench is intended for a children's museum or play area. Its intention is to evoke imagination and thought by and for youth. Petal Bench is to be the central aspect of an area designed for fun and playfulness while also creating something useful.



**BENCH IN SPACE.**

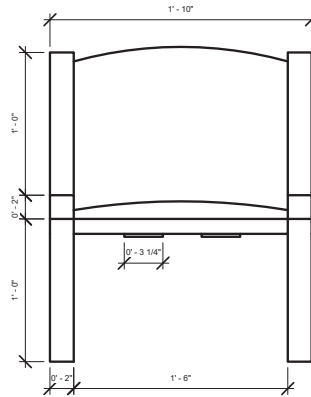


**PHYSICAL 3D MODEL.**

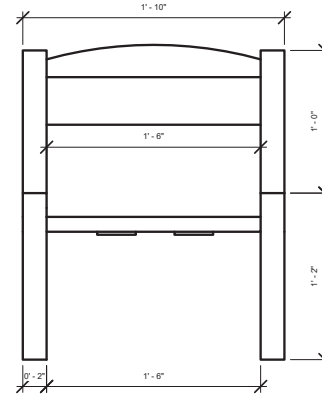


The Sensory chair was designed to provoke the 5 senses through the use of reclaimed materials. Eighty percent of the chair was created from materials that were previously something completely different.

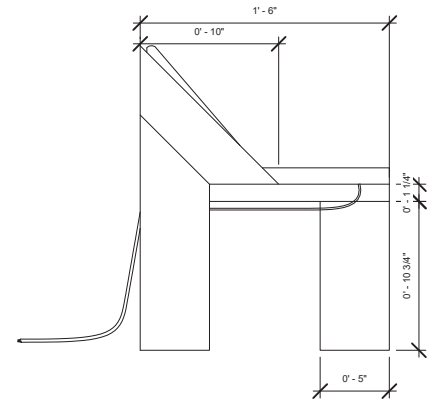
## DIMENSIONS.



**Front.**



**Back.**



**Side.**

## BUILT PRODUCT.



# Lighting Design.

## CONCEPT.

Using the blend of masculine and feminine design the Box Lamp fuses these together to create an industrial aesthetic. Based on modern sculptures, the Box Lamp takes this idea and makes it into a working piece of art. Utilizing the design principle of shape, this lamp focuses on both taking up space and mass while also expanding its light beyond the means of itself.

## LAMP INFORMATION.

Vintage Style LED

Amber Glass

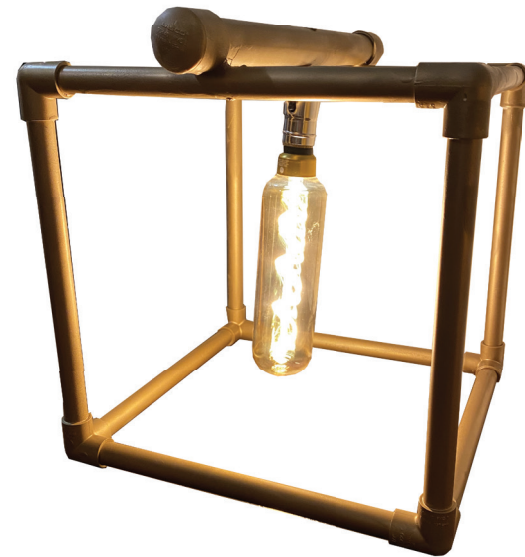
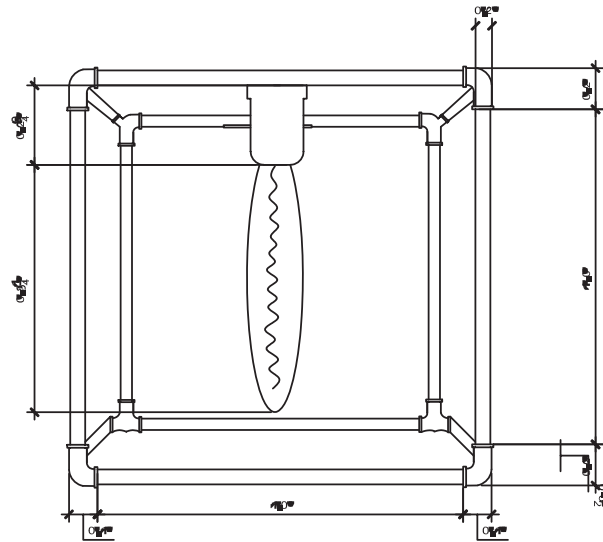
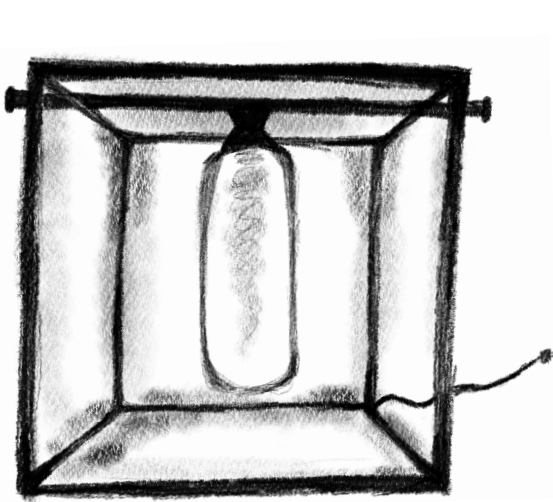
40w

120 volt

350 Lumens

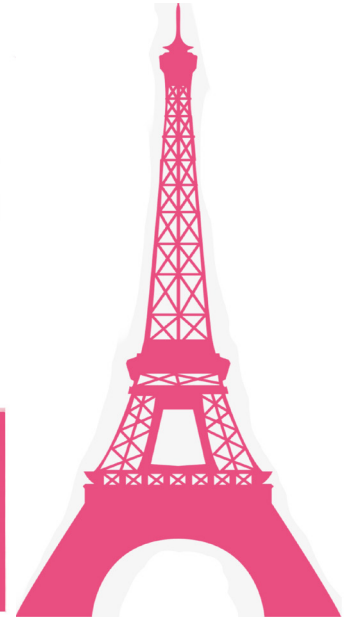
2000k

Warm Candle Light



# 21st Sign Commissions.

Comissioned art business started sophomore year of college, designing, drawing, and printing 21st birthday celebration graphics for peers.



**THANK YOU!**



**CONTACT.**

703.407.2655

halleyroy00@gmail.com

**CONNECT.**

[LinkedIn.com/in/halley-roy](https://www.linkedin.com/in/halley-roy)

@DesignedbyHalley

@HalleyRoy

*Halley Roy.*

