

Selected Works

# MIN AE CHOI

347-361-6948  
MINAEJULYCHOI@ICLOUD.COM

[PORTFOLIO](#)

[LINKEDIN](#)





---

# CONTENTS

## BIUM

Mill work Design

## HALFPENNYS'

Private Residence

## WELL

Community Clinic

## BUILD

Children's Library

## THE GALLERY

Boutique Hotel

## WITH

Contemporary Fashion Retail

# BIUM

; Intentional Emptiness, Act of Emptying or Cleansing

Mill work Design



Moon jar,  
[metmuseum.org/art/collection/search/45432](https://metmuseum.org/art/collection/search/45432)



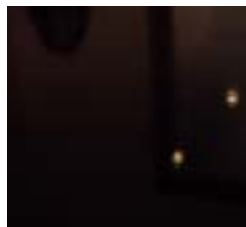
Lucia's Garden  
[archdaily.com/892500/lucias-garden-studio-gaon/5ad08e60f197cc5c96000679-lucias-garden-studio-gaon-photo?next\\_project=no](https://archdaily.com/892500/lucias-garden-studio-gaon/5ad08e60f197cc5c96000679-lucias-garden-studio-gaon-photo?next_project=no)



KOREAN RED PINE



PORCELAIN FLOORING



BLACK MIRROR



MOTHER OF PEARL



HANJI, KOREAN RICE PAPER







# HALFPENNYS'

## Residential

Objective:	Creating a home that is engaging with nature
Location:	Chappaqua, NY
Size:	appx 3,800 sqft
Program:	Revit, Enscape, Photoshop

### INTRODUCTION

The client, Halfpennys', is a couple with a young child. They are renovating a two-story house in a small town in Upstate New York as their weekend home. It is an hour and a half drive from the city and accessible by train. The site is surrounded by trees and has spacious land around the house, perfect for their sanctuary.

I designed the residence around the central double-height space that functions as a kitchen, dining, living and entertaining where most family activities are taking place. This open living space is across from the courtyard which serves as a relaxation and additional entertainment area. Circulation is straightforward with a hallway connecting all rooms on each level. Bedrooms and other supporting spaces are placed around the double-height space, and the bedrooms are suite, allowing more privacy and boundaries. The modern house avoids ornaments, yet the selected finish materials express a sense of comfort and luxury.

### ART



Torino, Guy Yanai



Untitled, Etel Adnan



COURTYARD





BIRDS-EYE-VIEW GROUND FLOOR



BIRDS-EYE-VIEW UPPER FLOOR





LIVING



BEDROOM SUITE



KITCHEN



EN-SUITE BATH



# WELL

## Community Clinic

Objective:	Building a community clinic that is connected to nature
Location:	Corona, Queens, NY
Size:	appx 10,000 sqft
Program:	AutoCAD, SketchUp, Enscape, Photoshop

### INTRODUCTION

Well is a community clinic residing in a single story building. Funded by government and Medicare, the facility aims to serve the community not only with its medical services but enagement in the community. It has three main services - primary, dental, and pediatric care- and offers complimentary educational workshops and private consulting services. It houses a cafe and a market place and has a spacious back garden where people can connect to nature and their neighbors.



GARDEN  
a place for relaxation  
and dialogue for the community

STAFF LOUNGE  
a space for all staff with lockers,  
a kitchenette, and a relaxation area

LAB  
for in house tests and  
preparing samples for  
out-of-facility tests

MAIL ROOM/  
MEDICAL WASTE

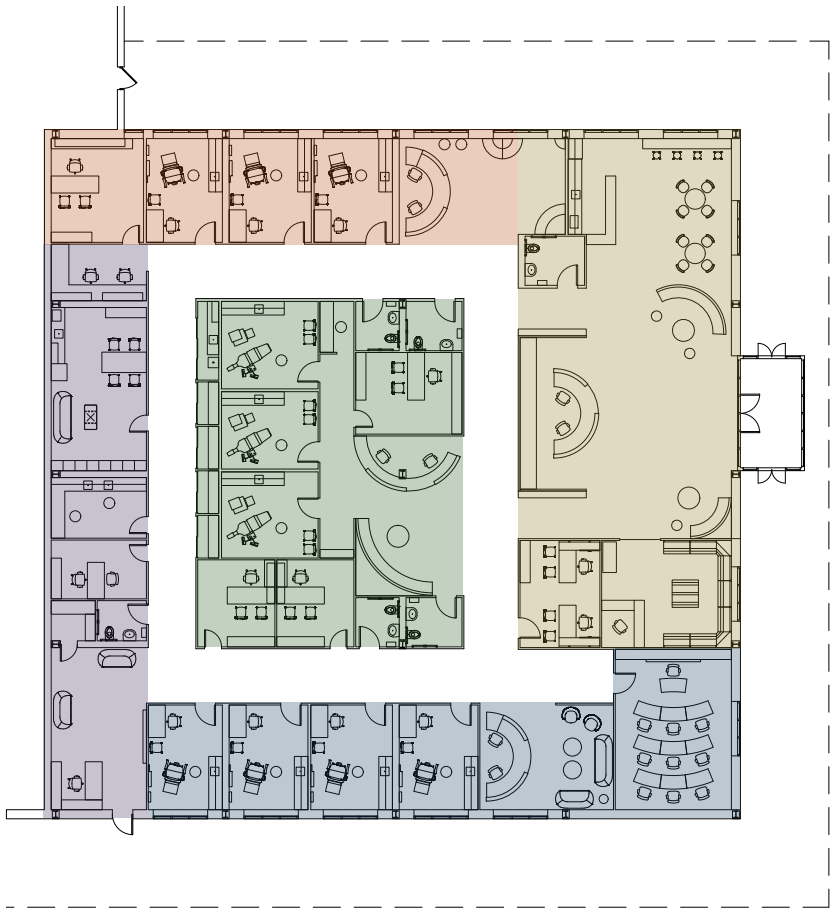
SERVICE ENTRY  
monitoring traffic for security  
and providing seating for visitors

CAFE  
a place to get recharged with  
healthy smoothies/ other drinks,  
offering the best view of the garden

LOBBY  
a welcoming space for patients with  
spacious reception and seating

MARKET  
a place to get well-priced fresh  
grocery and salad and fruit boxes,  
promoting healthy diet

WORKSHOP/ CONF. ROOM



ZONING DIAGRAM

- Lobby/ Retail
- Pediatric Care
- Dental Care
- Primary Care
- Support





LOBBY





CAFE



TREATMENT ROOM



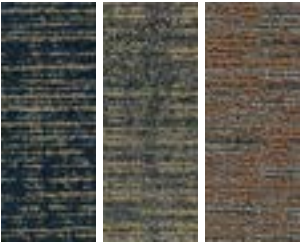
Limestone, NY Stone



Stained Bamboo



MDF



Carpet Tile, Mohawk



Wall Covering, Maharam



Upholstery, Maharam



PRIMARY CARE RECEPTION



DENTAL CARE RECEPTION

FINISHES



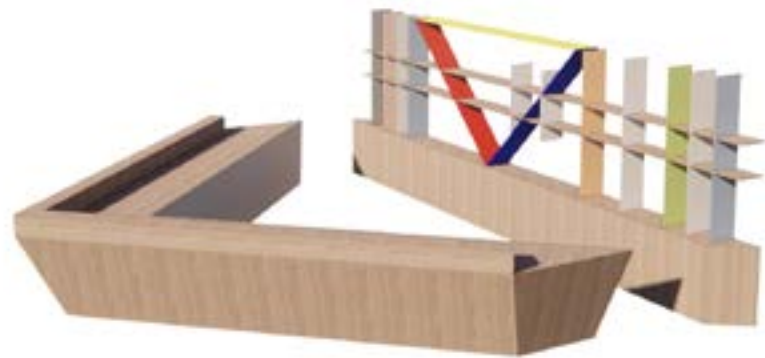
# BUILD

## Children's Library

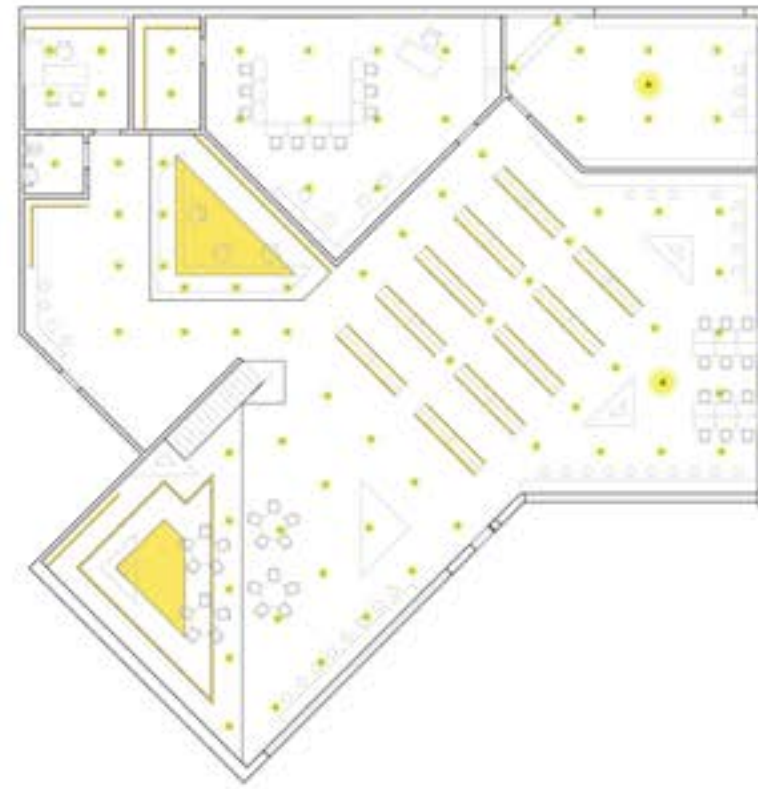
Objective: Building a community clinic that is connected to nature  
 Location: Bronx, NY  
 Size: appx 6,000 sqft  
 Program: AutoCAD, SketchUp, Enscape, Photoshop

### INTRODUCTION

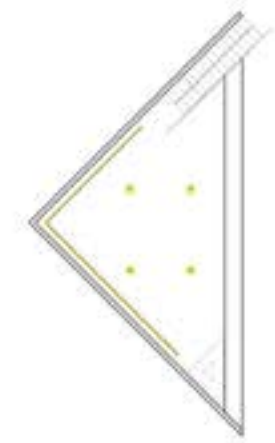
Building something and understanding how things are built became a concept for the children's library in Bronx, New York. Hoping to inspire children in design, Build library use simple geometries for custom furniture and mill work as well as architectural design. The library holds workshop space, admin office and collections of books for various age group of children and exhibit dynamic rhythm.



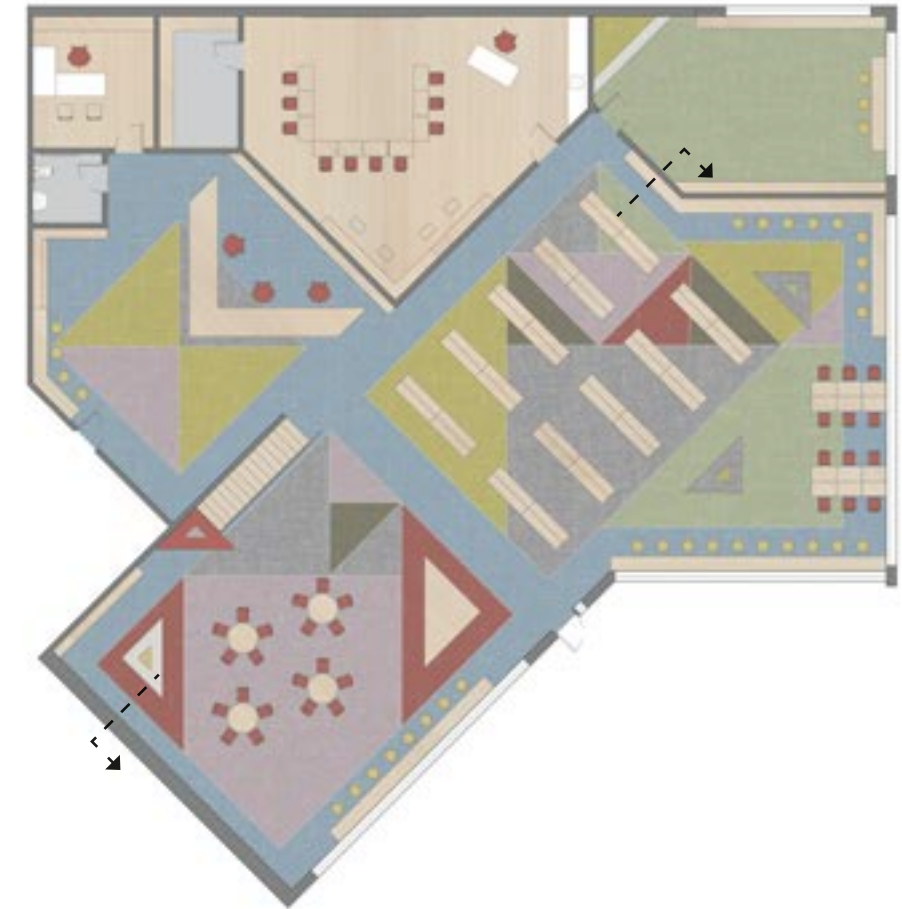
CUSTOM FURNITURE DESIGN



GROUND FLOOR RCP/ LIGHTING PLAN



MEZZANINE RCP/ LIGHTING PLAN



GROUND FLOOR PLAN



SECTION



MEZZANINE PLAN





RECEPTION



AGE 5-8 SECTION



AGE 8-11 SECTION



FROM GARDEN ENTRANCE





AGE 0-4 SECTION



# THE GALLERY

## Hospitality

Objective:	Designing a boutique hotel where art and nature can be enjoyed
Location:	Montreal, Canada
Size:	appx 7,000 sqft
Program:	AutoCAD, SketchUp, Enscape, Photoshop

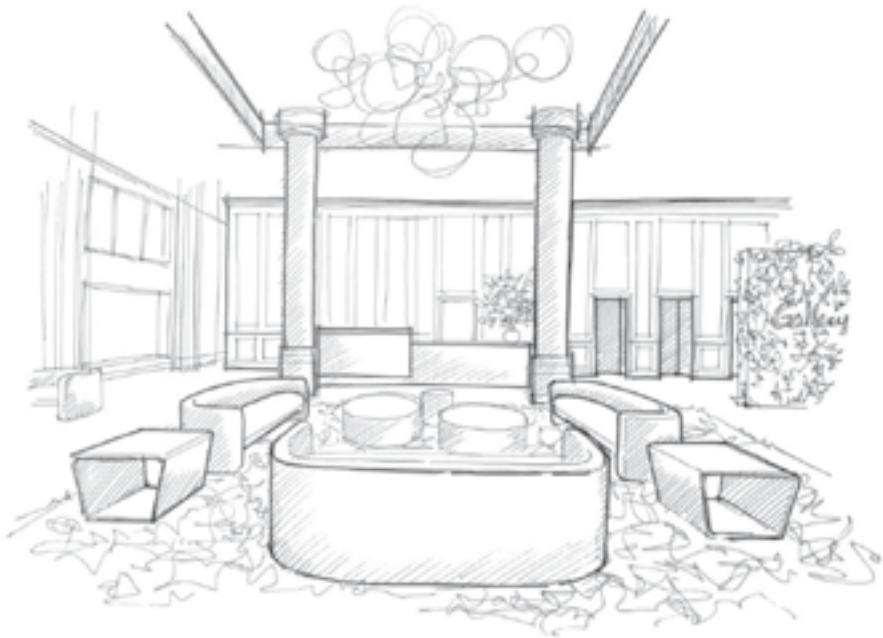
### INTRODUCTION

Known for its diverse historical and cultural heritage and appreciation for art, the city of Montreal itself is the inspiration of the Gallery Hotel. The city's oldest museum, Musee des Beaux-arts Montreal expresses the dynamic mix of old and new ideas and became the starting point of the project. While celebrating the merge of old and new, the Gallery is a luxurious boutique hotel that aspires to be a place one can experience nature and contemporary art.

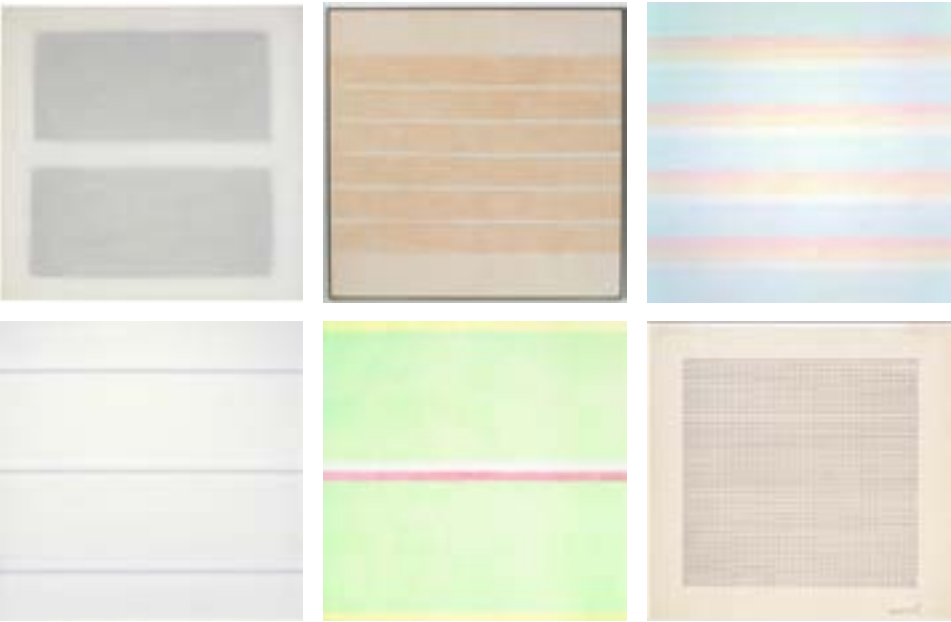


Canadian Express Building and its site

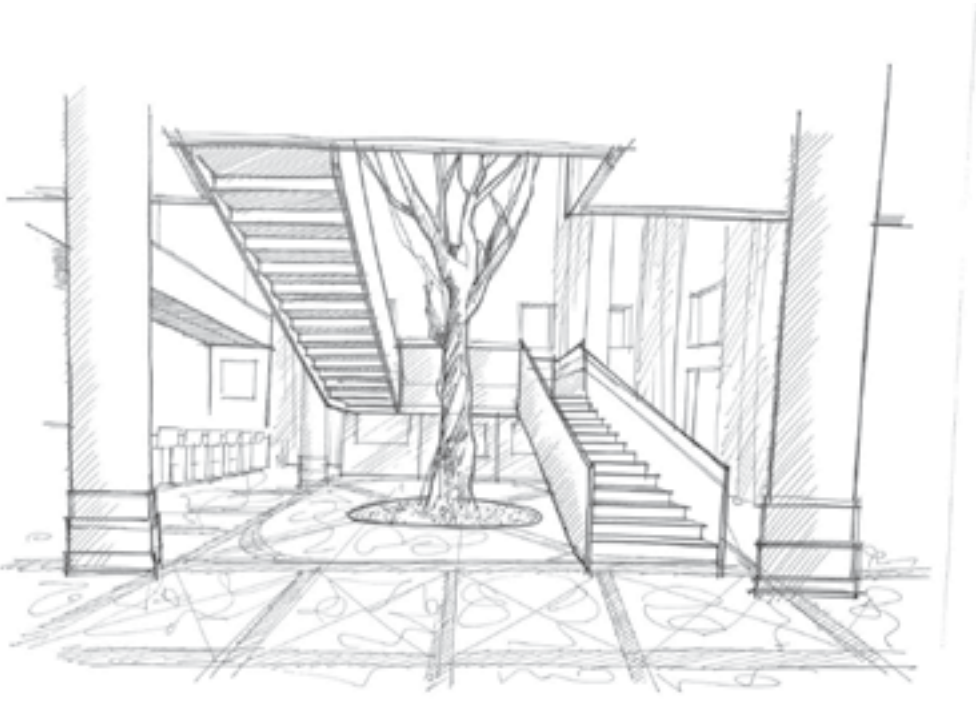
### CONCEPT & DEVELOPMENT



### ART



Agens Martin







LOBBY WEST



RECEPTION



LOBBY EAST



MEZZANINE GALLERY





CAFE



# WITH

## Fashion Store

Objective:	Creating a contemporary fashion store with drama and intimacy
Location:	Soho, New York
Size:	appx 6,,000 sqft
Program:	AutoCAD, Photoshop

### INTRODUCTION

Designing a dramatic yet intimate spatial experince for a life style brand, WITH is the goal for the project. The retail store is located in a busy street of Soho, NY. The brand is Known for impeccable quality and personal services, and it aspires to create products that withstand time, thus the focus is on a classical and timeless design. The store has two levels and requires a spacious back office and storage space apart from display and shopping area.



Soho, NY/ photo by iwyndt

### INSPIRATION

WITH create classic pieces naturally minimalistic in their aesthetics, yet their materials are finest. Reflecting this, the harmony between simplicity and luxurious finishes became a starting point of the design. The pendant lighting and vaulted ceiling images share a sparkling and dramatic feeling that the space is aspiring to have.



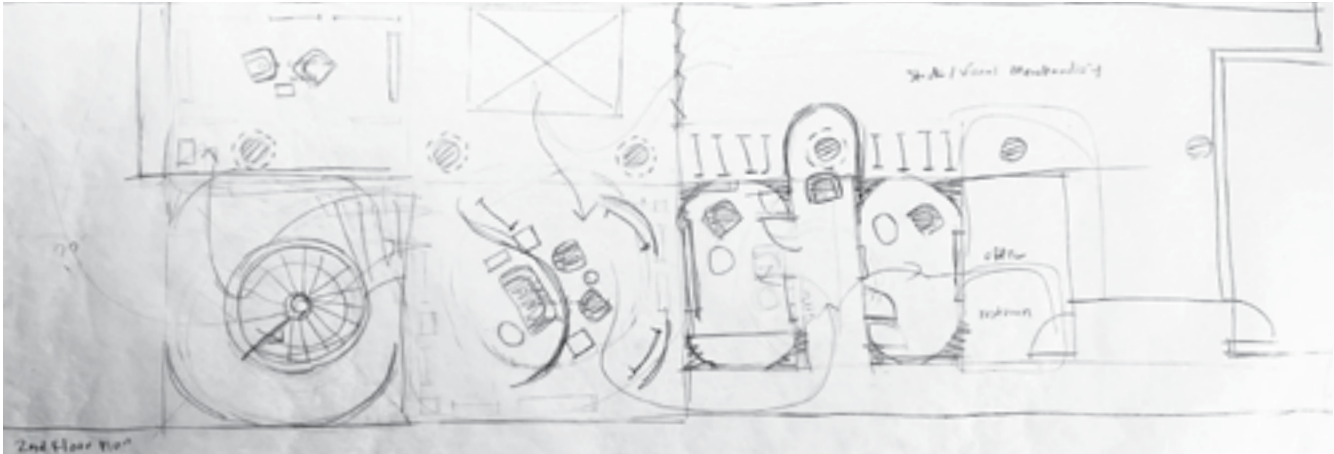
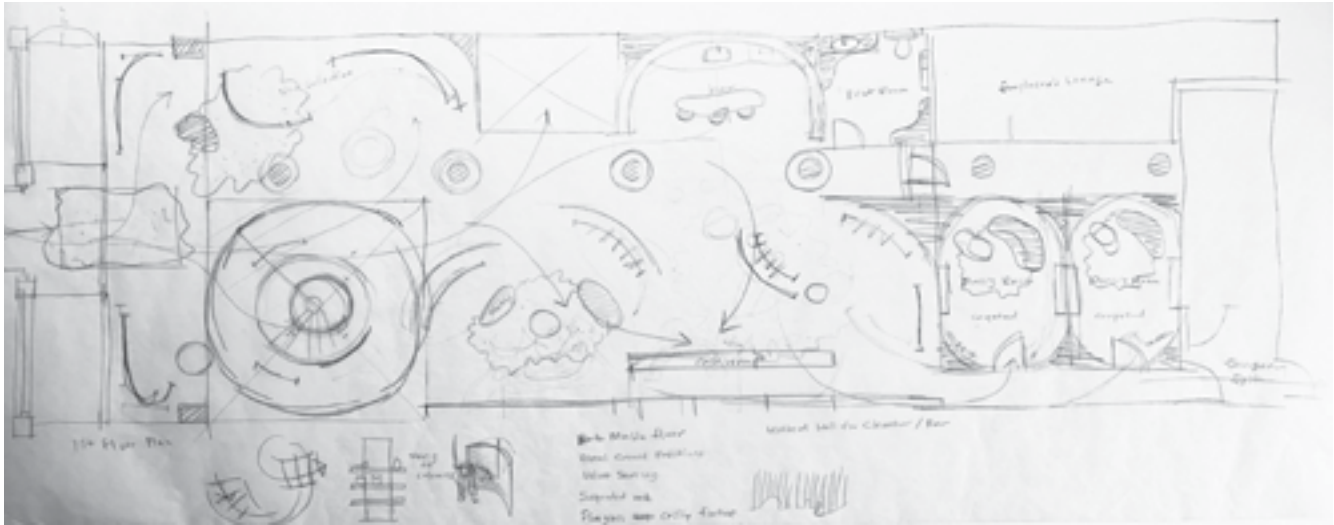
Pendant Light, Terzani



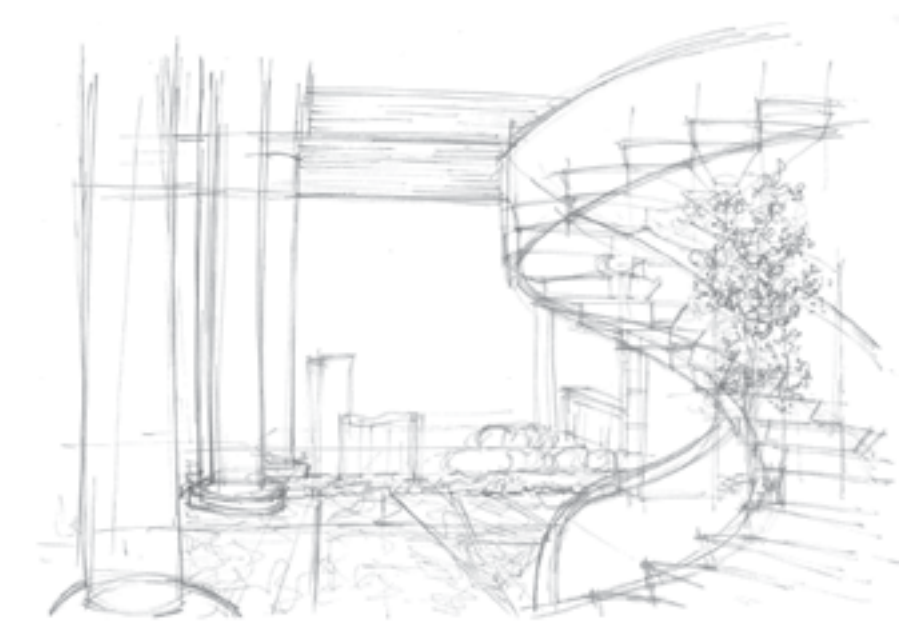
Vaulted Ceiling,  
St. Anne's Church



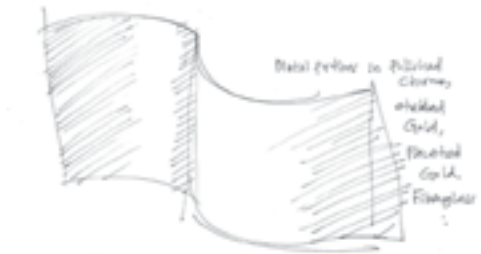
Filippa K



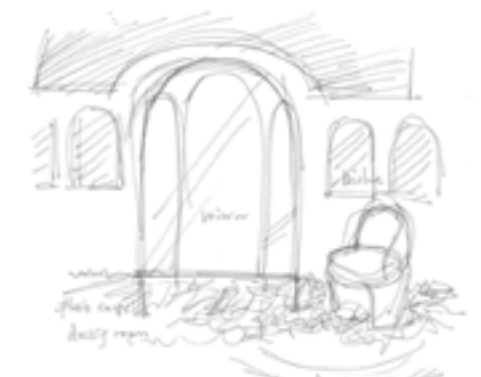
### DEVELOPMENT SKETCHES



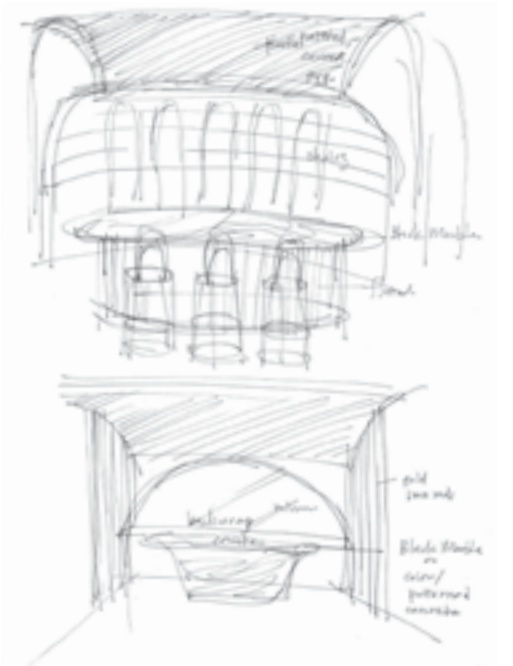
STAIR CASE



METAL PARTITION



DRESSING ROOM



BAR/ CASH WRAP

### SPACE PLANNING

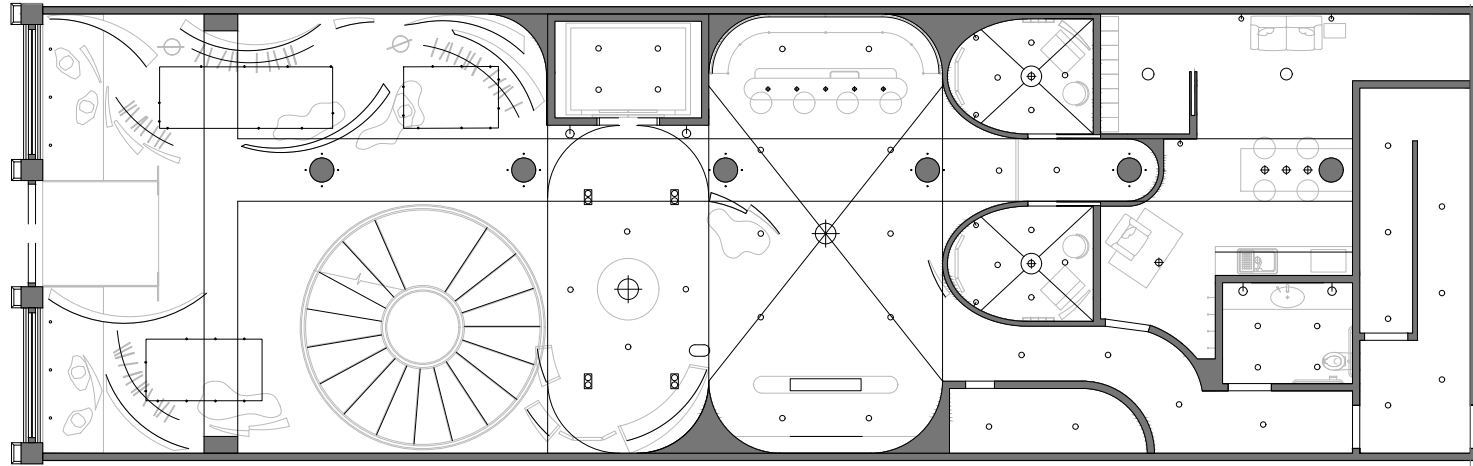
The space is organized based on customers' typical shopping experiences. Upon entering the store, a customer will see a new collection in an open, double-height space then proceeds to the area with cash wrap and bar. Spacious dressing rooms are located towards the back where personal shopping and tailoring service can take place. The upper floor houses a core collection that repeated customers of WITH enjoy.

### LOGO DESIGN



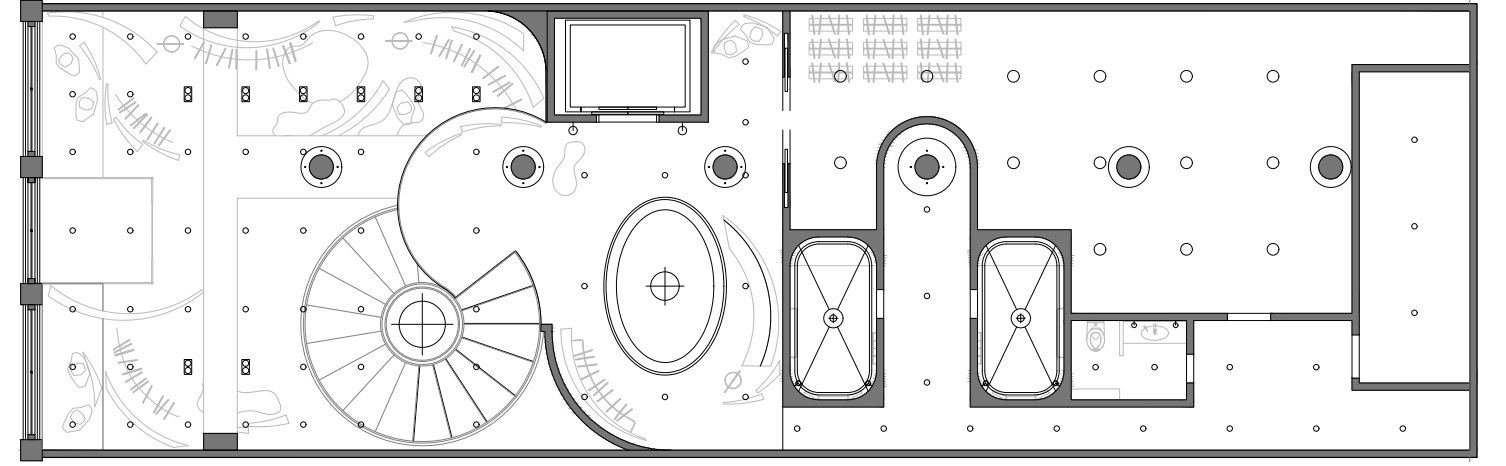
The logo is designed with the letters of the brand name and represents the clean lines of the products.





RCP/ LIGHTING PLAN: GROUND LEVEL

- Adjustable Accent
- Track
- ◇ Wall Sconce
- ⊕ Suspended Pendant
- Cove/ Linear
- Uplight



RCP/ LIGHTING PLAN: UPPER LEVEL

New Collection

Bar

Dressing Room

Employee's Lounge



GROUND LEVEL

Shoe/ Bag

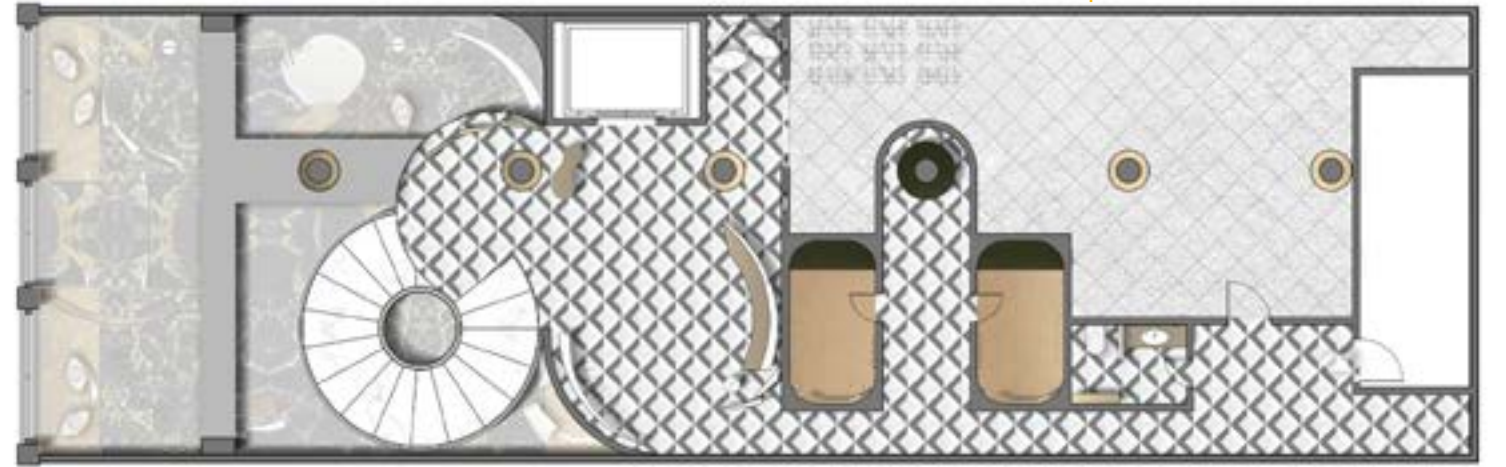
Cashwrap

Storage

8' 3' 6' 12'



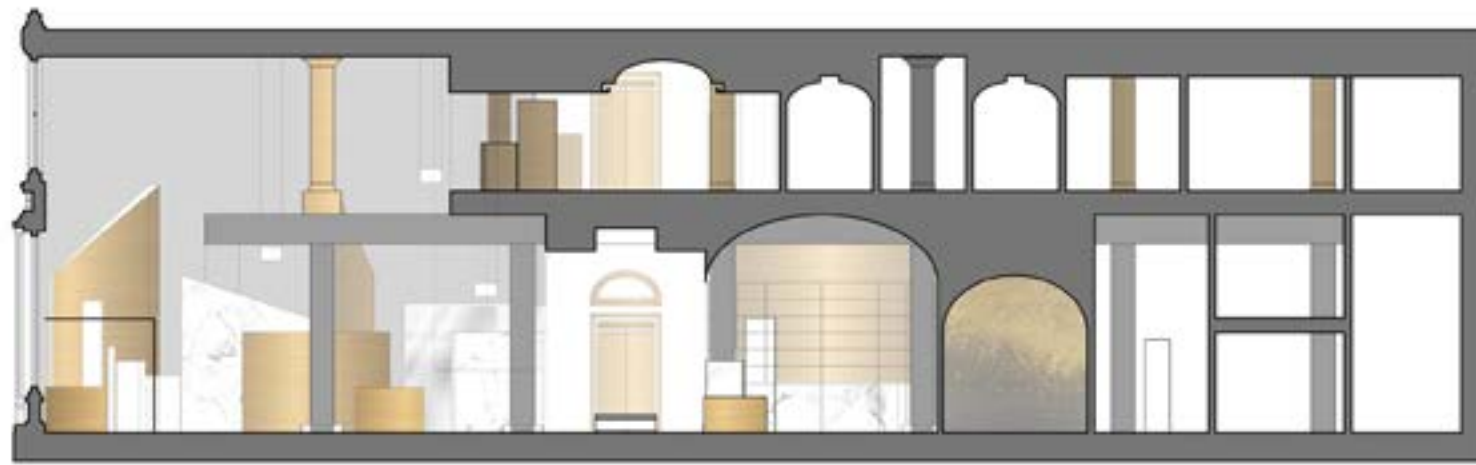
Merchandise/ Display Storage



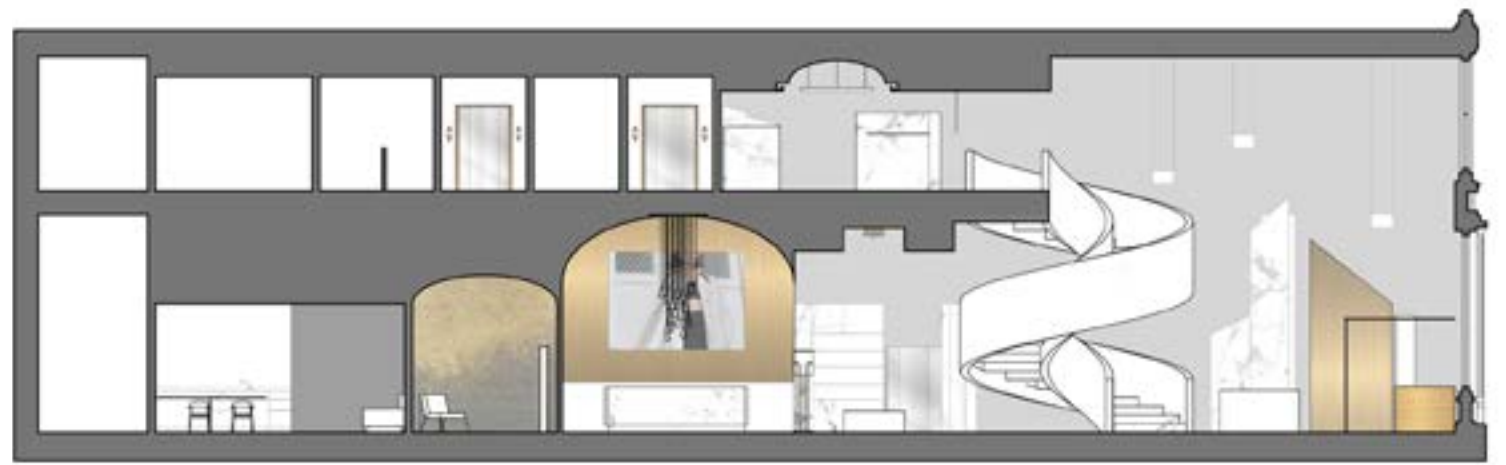
UPPER LEVEL

Core Collection

Dressing Room



SECTION A-A'



SECTION B-B'



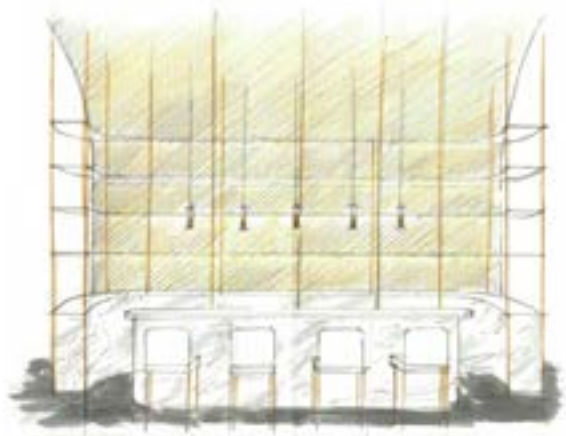




The vaulted brass ceiling transitions one from the display area to a cash wrap and a lounge bar, celebrating the experience of shopping.

The bar across allows customers to engage with glassware and lounge. Spacious dressing rooms provide a luxurious, beautiful setting for personal shopping and fitting.

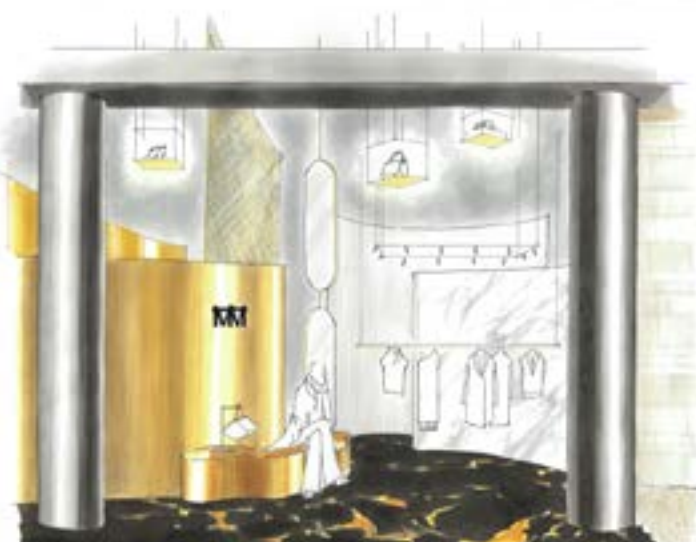
The art partitions of fiberglass, marble, and brass continue throughout the space, and the geometry is repeated in rounded walls of dressing rooms and custom displays.



LOUNGE



CASHWRAP/ SHOE DISPLAY



NEW COLLECTION DISPLAY



DRESSING ROOM



Glass tile, Tile bar



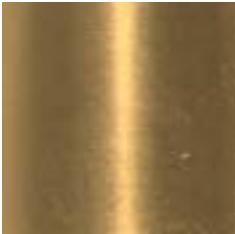
Laminated Fiberglass



Mirror



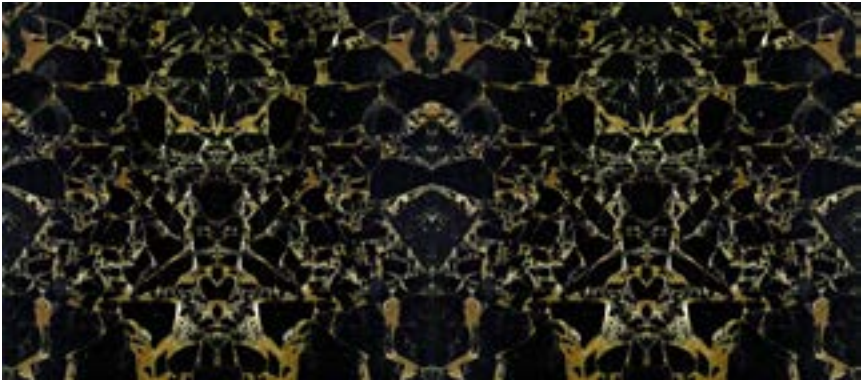
White marble, New York Stone



Brass



Wall paper, Phillip Jeffries



Black Marble, New York Stone



Pendant, Bocci



Pendant, Terzani



Custom Brass Display Table

FINISHES



## ABOUT ME

---

Influenced by my uncles who paint and photograph, my love for art and design naturally grew from childhood. I started to draw and make things and visiting galleries and museums became part of life. I was attracted to other creative mediums- cartoons and illustrations during high school, writing and making films during college. After studying fashion design, I moved to New York and started career. After more than a decade of experience in the fashion industry, I shifted my focus to interior design with desire to create something three dimensional. I believe in the great power of design and I am very excited to start my new career and benefit many others.

“Resolve to be the sun. This is the first thing you must do. As long as you are the sun, no matter what problems you may be facing now, the dawn will always break, fine weather will always return, and spring will never fail to arrive.”

THANK YOU