

FAYROOZ N. AWAD

WORK SAMPLE

CONTENTS

PROFESIONAL

- 1 HALFA TOURISM RESORT
SEP 2018- APRIL 2019



- 2 KHSRTOUM
INTERNATIONAL FUTSAL
SEP 2019-AUGUST 2020



- 3 SAUDI SUDANESE BANK
JAN 2019- JULY 2020



- 4 CTC SPARE PARTS
MARCH 2014- SEP 2014



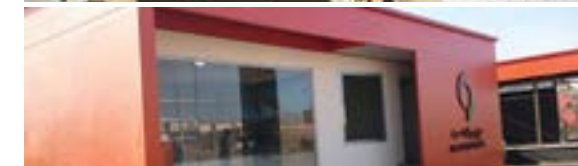
- 5 CTC ENGINEERING CAFETERIA
OCT 2016- JUNE 2017



- 6 CTC ENGINEERING SPARE PARTS
(BLOCK 4)
OCT 2016- JUNE 2017



- 7 CTC ENGINEERING SOBA DISPLAY
AREA
JUNE 2014- SEP 2014



- 8 ALDAMAR CENTER FOR AGROTECHNOLOGY
TRANSFER AND APPLICATION (AUDITORIUM)
JAN 2017- APRIL 2017



The total area of Halfa resort is 1500 sqm. It's located in Halfa In Northern Sudan on top of a hill, which is extremely beneficial because it has a great view to the entire city of Halfa, as well as the Nubian lake from 3 sides.

When you enter the resort there's a welcoming reception which includes a waiting area, administration and shops, there's also a Museum to allow tourists to know more about the culture of the city, as well as a Multi-purpose hall for different events. after entering the reception there's a clear access to the rest of the functions, which are 3 types of rooms (20 common rooms, 6 VIP rooms and 1 Presidential suite). All these rooms point towards an outdoor theatre, which is suitable for different types of events, there's also a restaurant that includes a main kitchen to serve both the Restaurant and the Multi-purpose hall which is located next to it. the main concept is to design a sustainable resort, which is why it will be built with local materials, and also to be part of it's surroundings.

The main theme of the design is to symbolize and represent Nubian Architecture, with a touch of Modernity.



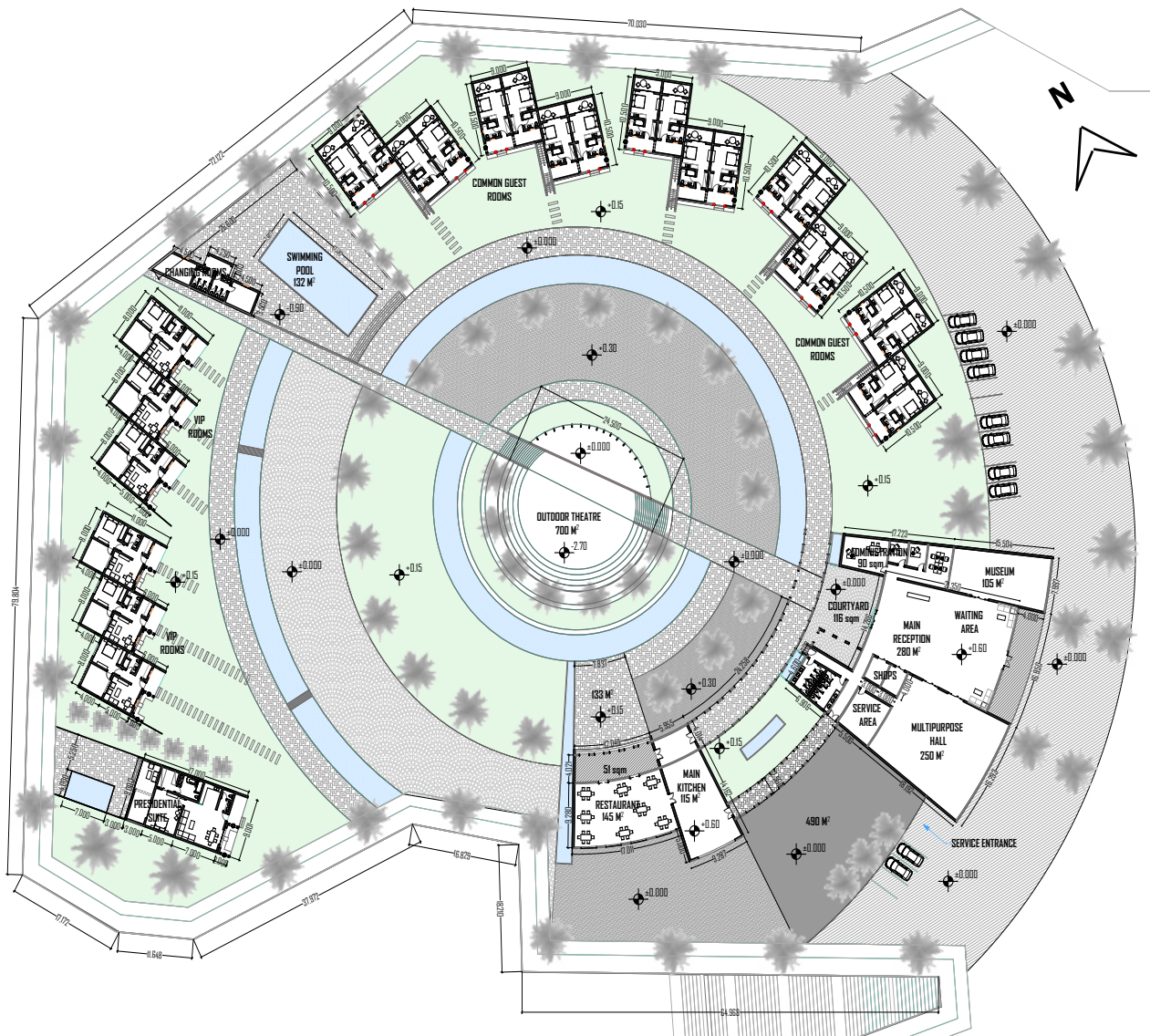
-SITE LOCATION



-VIEWS FROM THE EXISTING SITE.



Overall views of the Resort, with the total area of 22,000 sqm

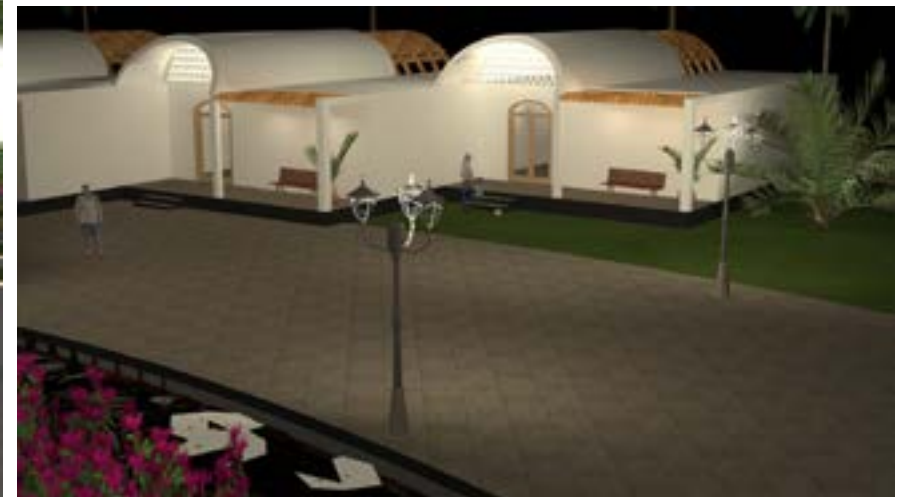
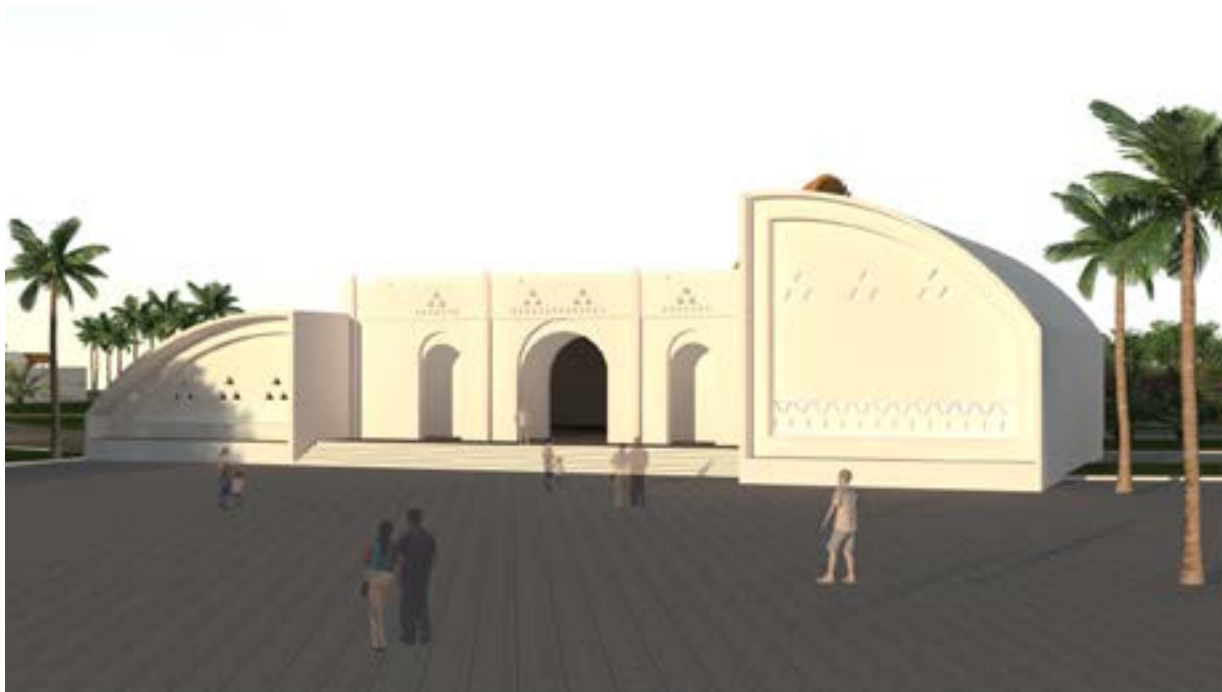


-Ground floor plan



Overall views of the Resort after decreasing the area to 15,000 sqm



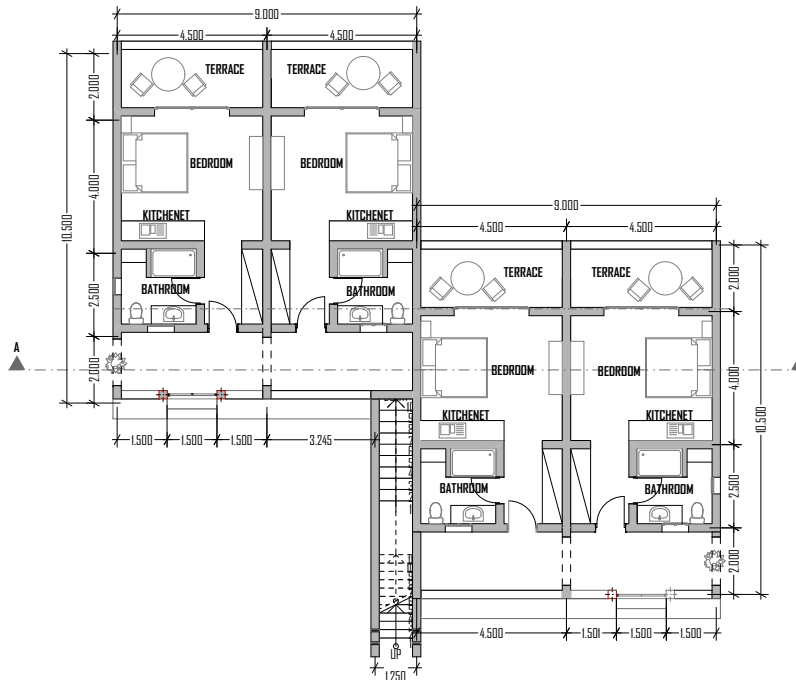


ROOMS TYPES:

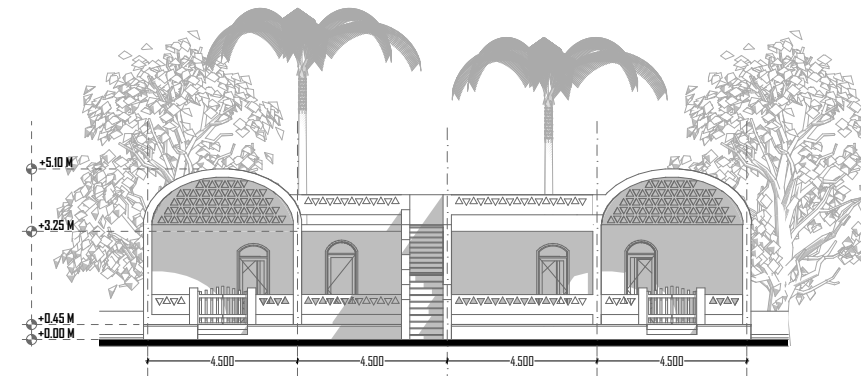
TYPE A (COMMON ROOMS):

Halfa resort consists of 20 common guest room, each 4 are located on the same building. the room's area is 30 sqm, each room includes a bathroom, a kitchenet, a bedroom and a terrace with a view to the lake

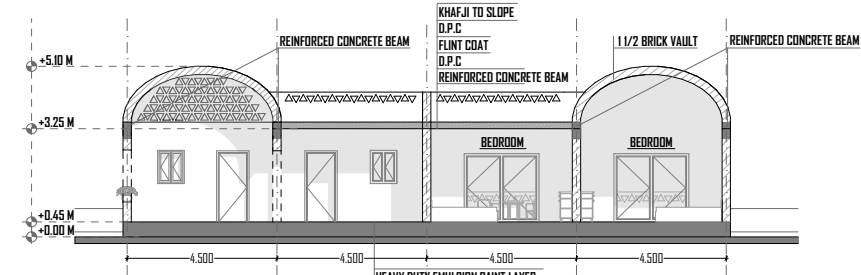
Each 4 rooms also have a shared terrace on the first floor of the building



GROUND FLOOR PLAN
SCALE 1:75
ROOM AREA 30 M²



FRONT ELEVATION
SCALE 1:75



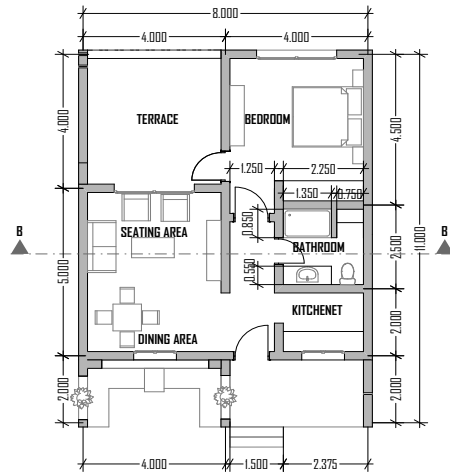
SECTION A-A
SCALE 1:75

REINFORCED CONCRETE BEAM
D.P.C
FLINT COAT
D.P.C
REINFORCED CONCRETE BEAM
1 1/2 BRICK VAULT
REINFORCED CONCRETE BEAM
KHAJJI TO SLOPE
HEAVY DUTY EMULSION PAINT LAYER
7 CM SMOOTH REINFORCED CONCRETE
SAND FILLING
HARD CORE

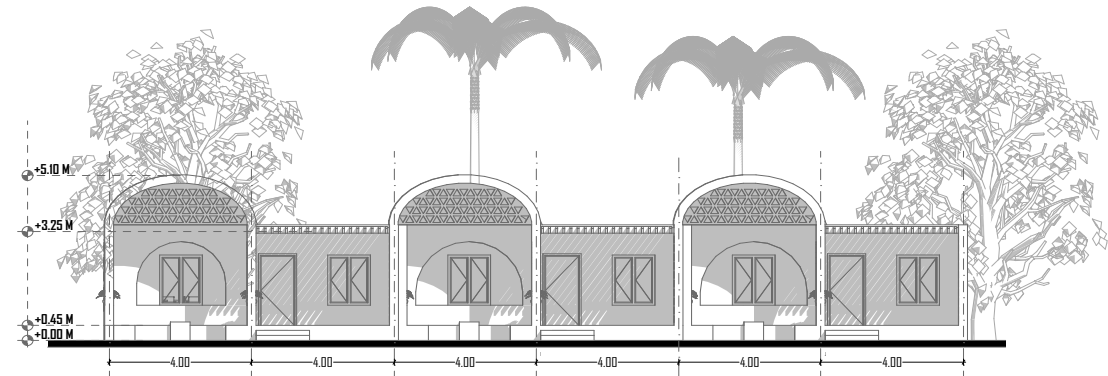
TYPE B (VIP ROOMS):

The resort consists of 6 VIP rooms. The room's area is 60 sqm, each room includes 2 bathrooms, a kitchenet, a bedroom, and a terrace with a view to the Nubian lake down the hill. It also includes a seating area and a dining area.

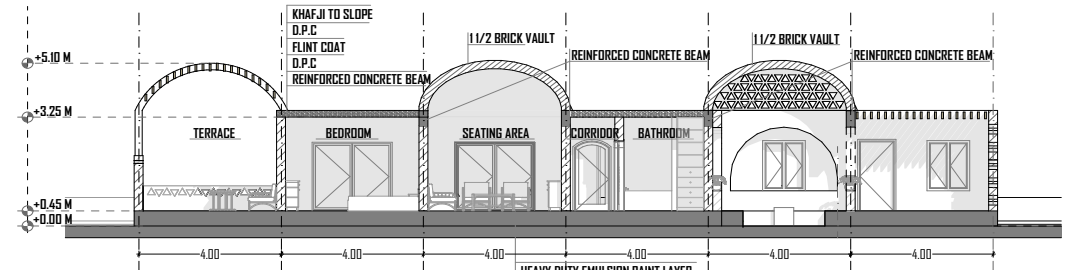
What distinguishes VIP rooms is that they're more spacious and fancier. They're also located near the swimming and has more privacy than the other rooms.



GROUND FLOOR PLAN
SCALE 1:75
ROOM AREA 60 M2



FRONT ELEVATION
SCALE 1:75

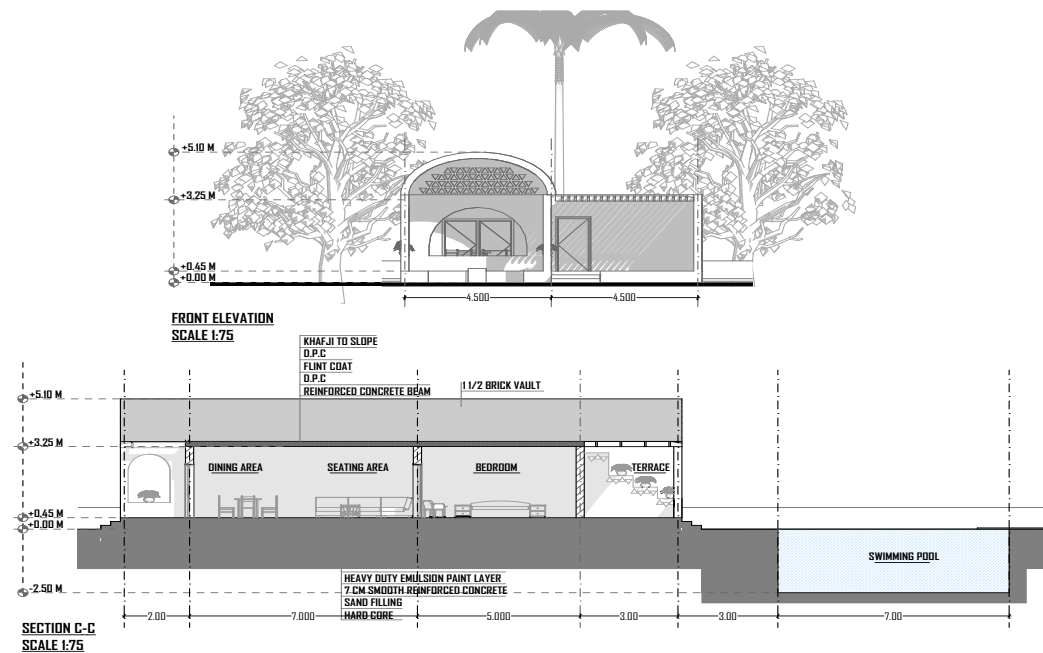
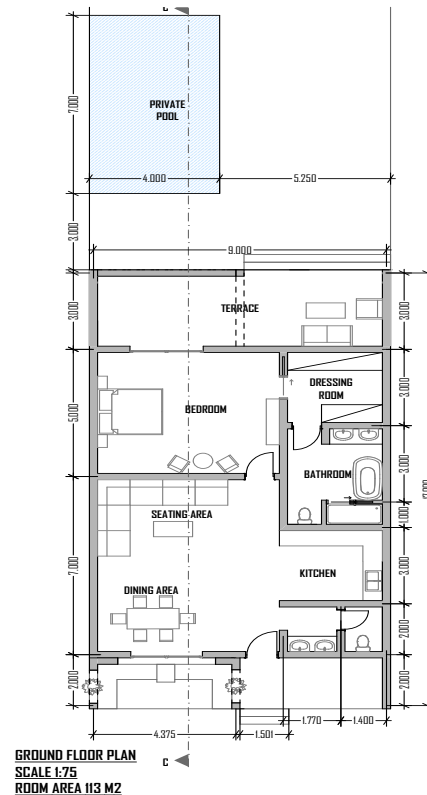


SECTION B-B
SCALE 1:50

HEAVY DUTY EMULSION PAINT LAYER
7 CM SMOOTH REINFORCED CONCRETE
SAND FILLING
HARD CORE

TYPE C (PRESIDENTIAL SUITE):

There's only one presidential suite in this Resort. The total area of the suite is 113 sqm, and it includes 2 bathrooms, a kitchenet, a bedroom, a terrace with a view to the Nubian lake down the hill, it also includes a seating area and a dining area. This suite is even more spacious and wider than the VIP rooms, it's also more luxurious and deluxe. The master bedroom on the presidential suite is almost 30 sqm with a 10 sqm dressing room, and 14 sqm bathroom. But what characterizes the presidential suite the most is the 28 sqm private pool with a great view - from the hill.

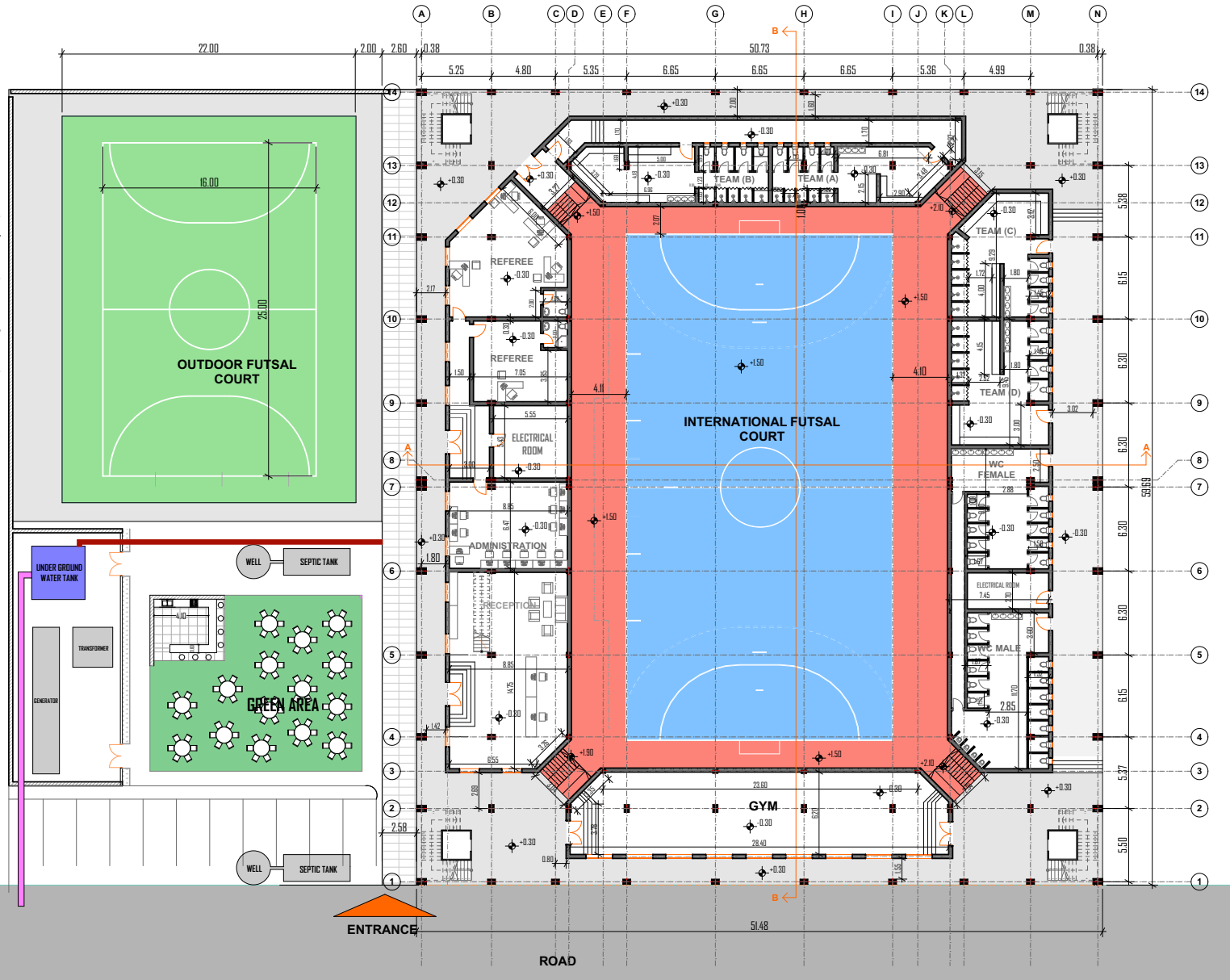


02 KHARTOUM INTERNATIONAL FUTSAL

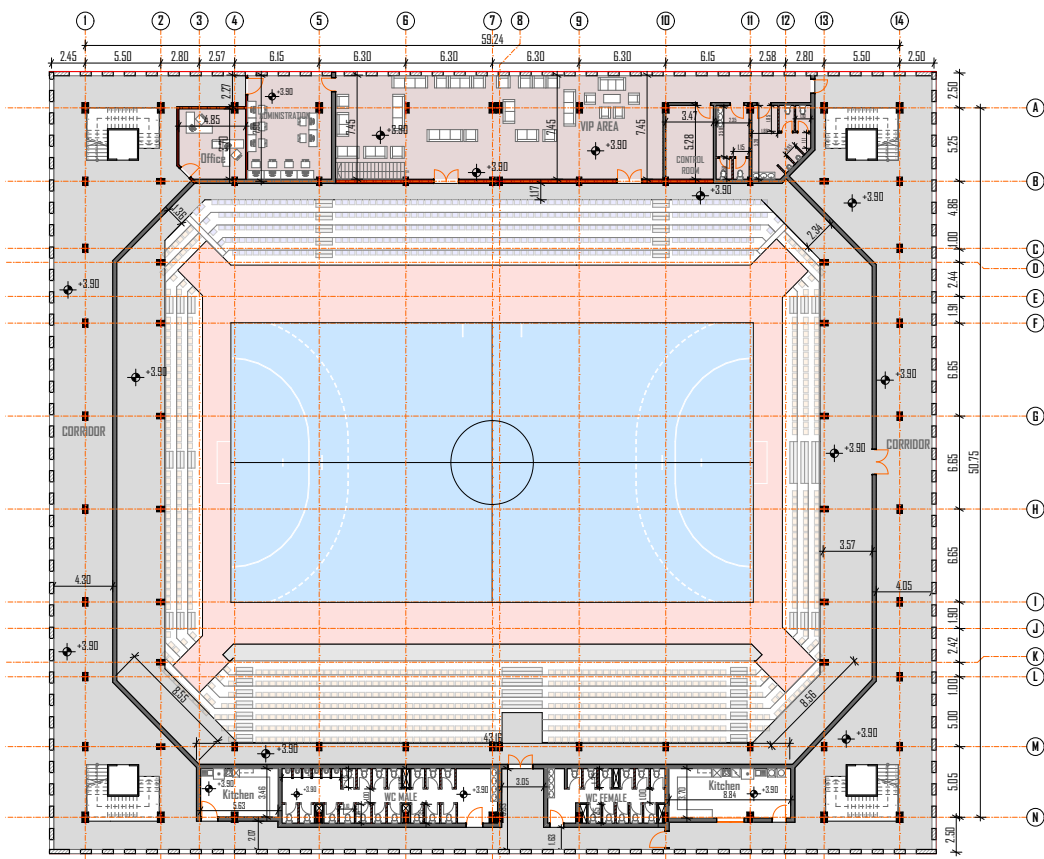
PROJECT TYPE : PROFESSIONAL
SEP2019-AUGUST 2020

Khartoum International Futsal is sponsored by FIFA and Sudan Football Association, it's located in Khartoum, Sudan.

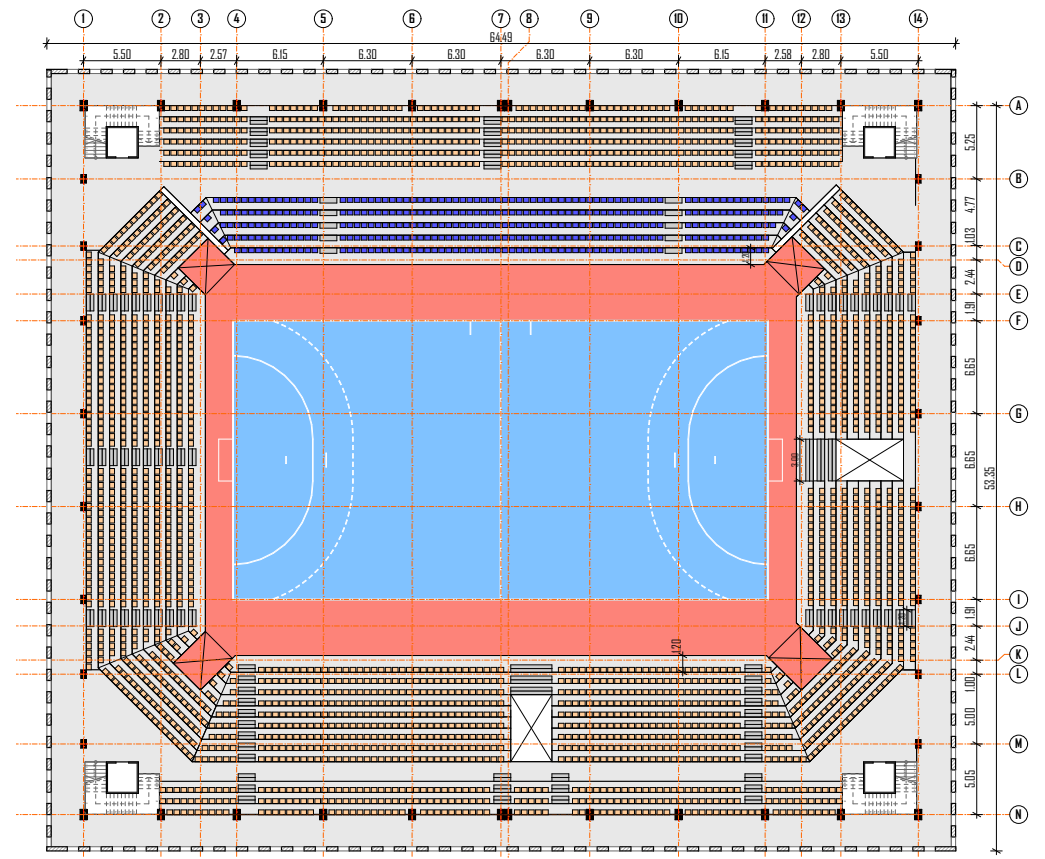
We've made many researches to ensure that the design is based on international standards. We worked as a team of Architects, and my task was to work on plans and 3d design to make sure the levels are accurate, and required number of seats is being met, also worked on the interior and exterior of the building, in addition to drawing both Architectural and MEP sets, in addition my task included working on the BOQ to make sure the design is limited to the given project budget.



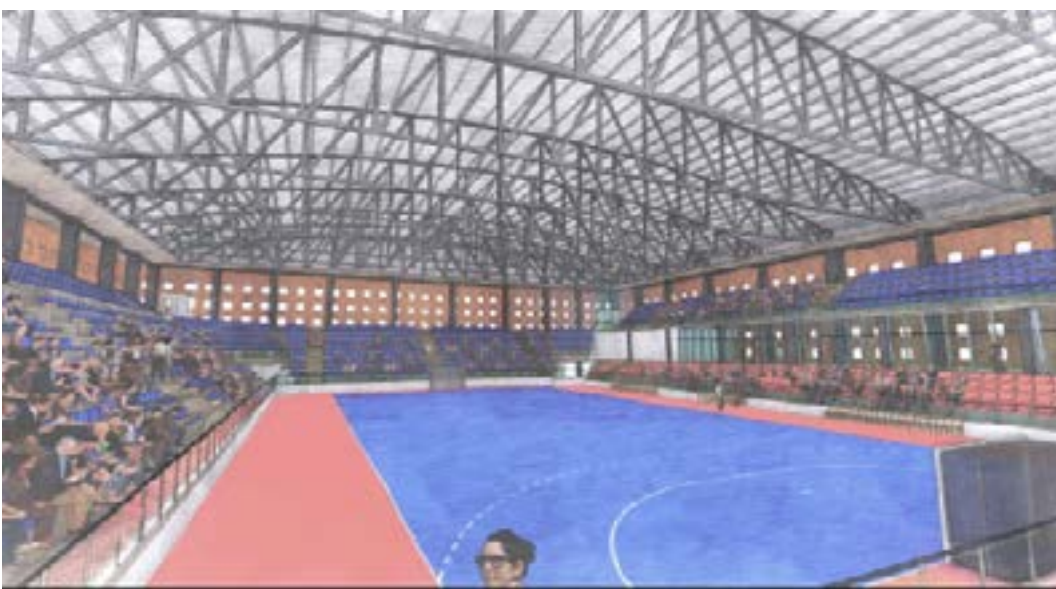
GROUND FLOOR PLAN



MEZZANINE FLOOR PLAN



FIRST FLOOR PLAN



Architectural section drawing of a building, showing a cross-section with multiple levels, including a roof, floors, and a basement. The drawing includes structural elements like columns, beams, and stairs. It is annotated with dimensions and labels for various components.

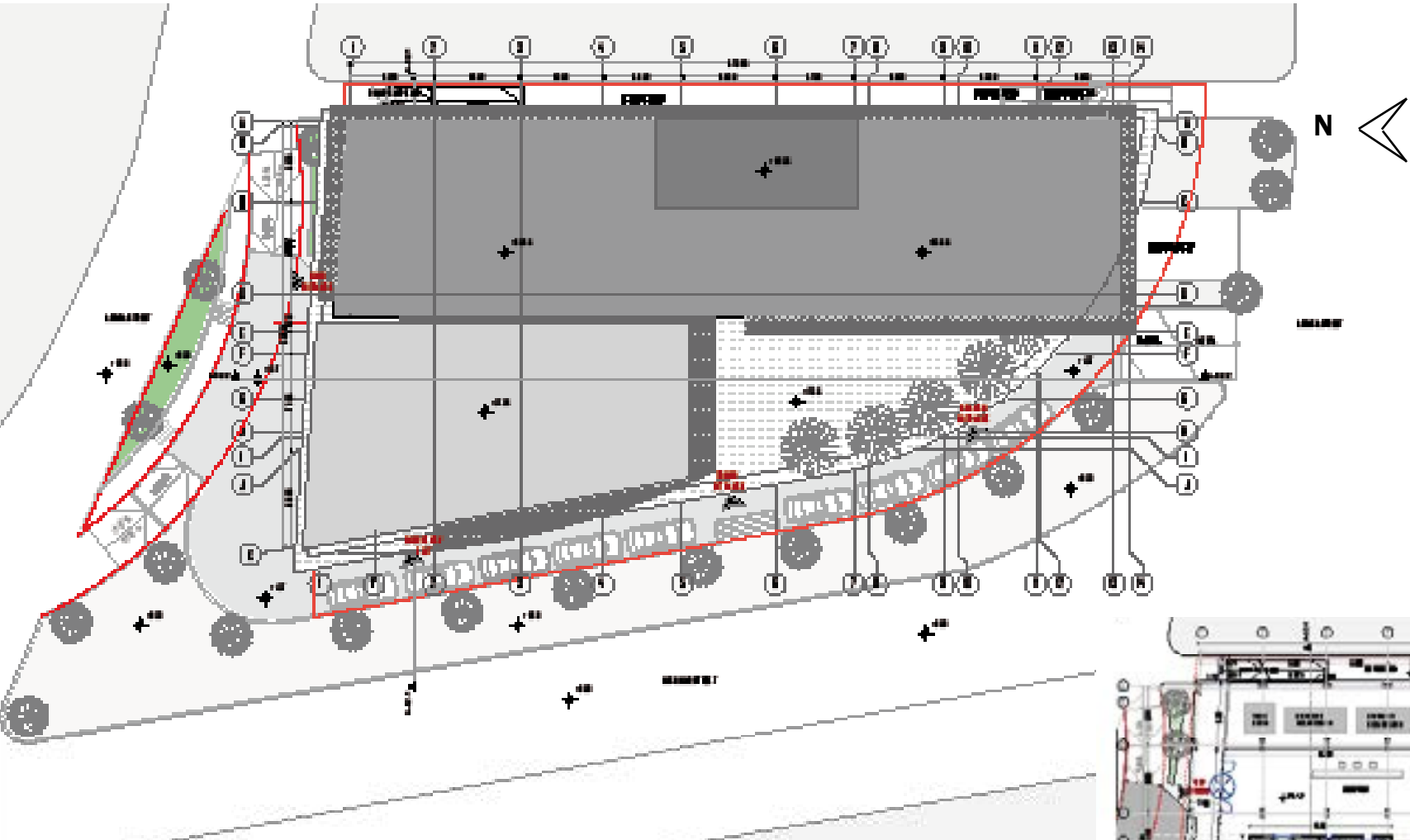
Architectural section drawing of a building, showing the internal structure, including the roof truss system, walls, and floor slabs. The drawing is labeled with grid lines A through H and includes various annotations and dimensions.





The stairs and corridors were designed to be wide enough to accommodate the large number of people entering at the same time.





SITE PLAN

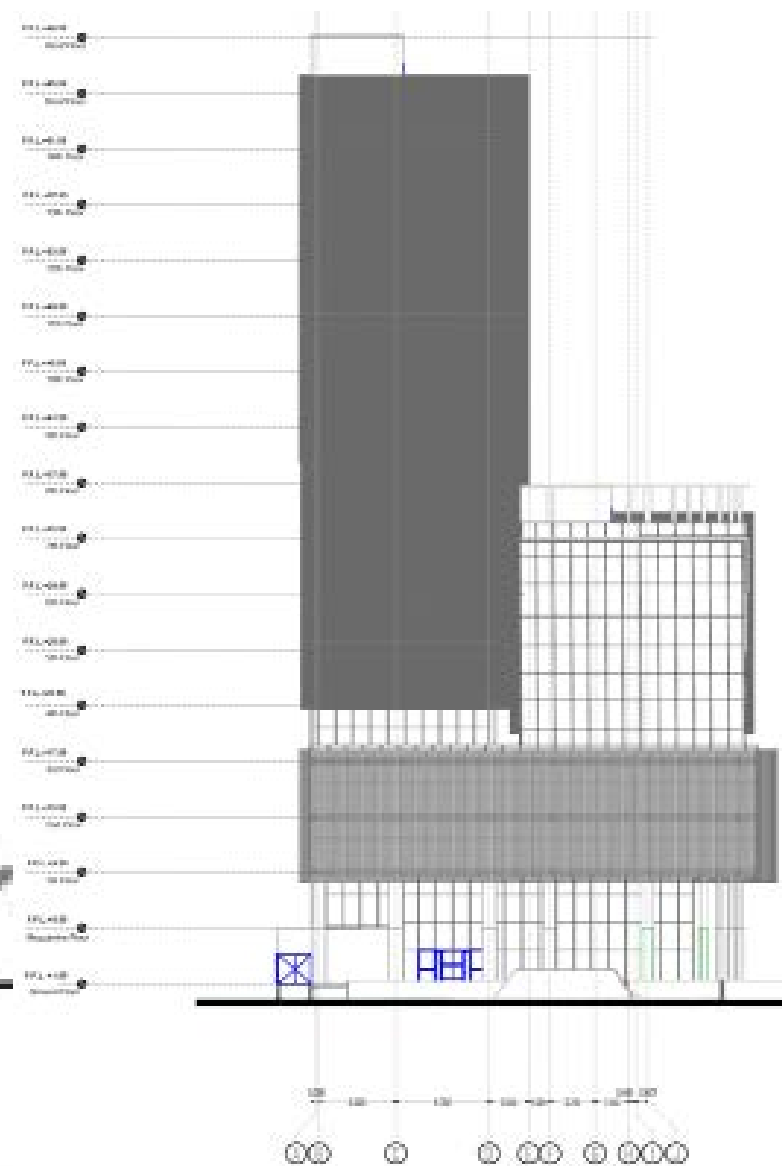
The site is located in Mc Nimir street in the centre of Khartoum. The building is divided into 3 main parts (the Headquarter Bank, the Branch , and commercial tower) The number of floors is 14 including 3 basement floors which are being utilized mostly for parking and service and storage areas

GROUND FLOOR PLAN





WEST ELEVATION



NORTH ELEVATION



Work on this project was divided between a team of Architects. my task was to design the exterior and interior of the building, the 3d design, the Architectural set, as well as to work on the layout of the Bank and the Basement, and to calculate the bill of quantities





The main concept was to design an environmental friendly building, and in order to achieve this goal many features were added and considered in the design. The design included perforated metal slab around the building with plants on top of it, and all the glass panels were recessed behind the terracotta sunshade panels, to avoid direct sunlight on the building, and to get thermal efficiency and improve the ventilation within the building which leads to decreasing the electricity usage throughout the year, and also for aesthetical reasons





Bank main entrance

One of the biggest challenges was to make changes in the layout of the Ground floor and Mezzanine floor to create a void to make the main reception double height which have made it much more spacious and welcoming to visitors. also using white Carrara marble helped in making it more spacious and restful





Interior design for open offices areas and corridors





Samples of offices and meeting rooms design





04 CTC SPARE PARTS

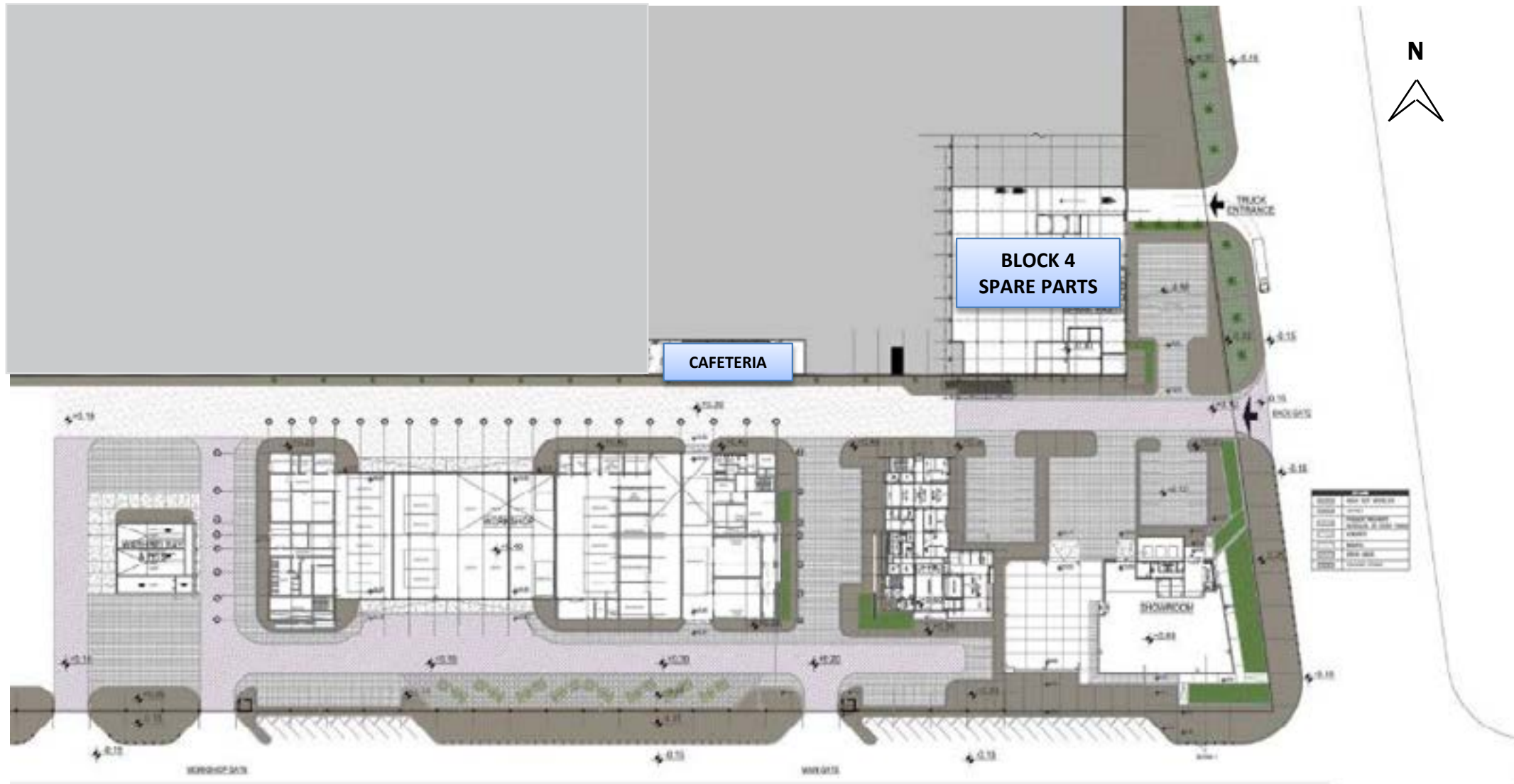
PROJECT TYPE : PROFESSIONAL
MARCH2014-SEP 2014

The following project presents some work I have accomplished while working in CTC, it's one of the biggest projects in our company, we worked as a team so I'm emphasizing the parts that I designed. I was assigned to work on the interior design of the spare parts, and some of the exterior elevations. My task was to develop the main reception's interior design, perform architectural drawings and also visual presentation. The main concept is to create a modern design that matches the common theme of the project, I used wood because it gives the design an elegant and more natural look.



CTC ENGINEERING COMPLEX

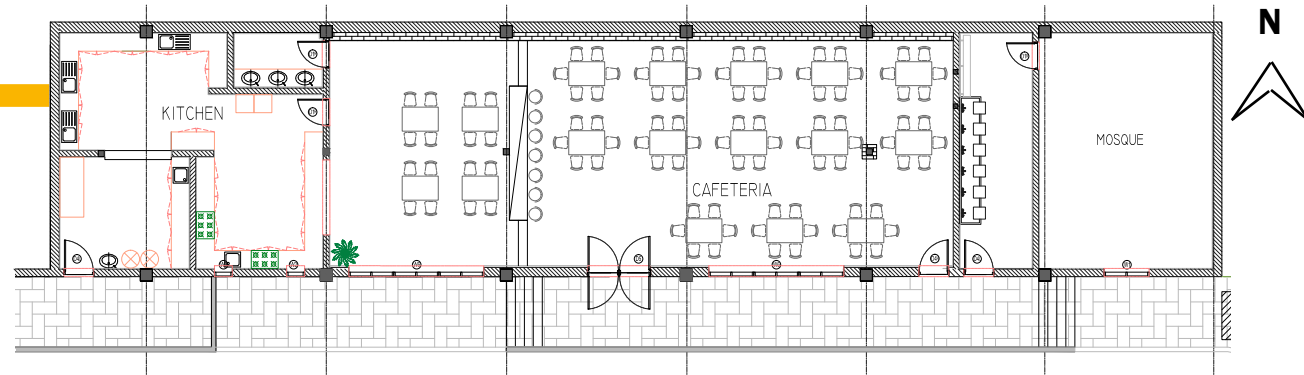
CTC Engineering complex is a project with an area of 10,000 sqm composed of five blocks, The showroom, Office, Workshop, Spare Parts, and Washing Bay. I been Working as an architect in CTC Group under the supervision of the head of design Ghada Omer. and was assigned to take the whole design of Block 4 and the complex's cafeteria from concept to completion.



05 CTC ENGINEERING CAFETERIA

PROJECT TYPE : PROFESSIONAL

OCT 2016-JUNE 2017



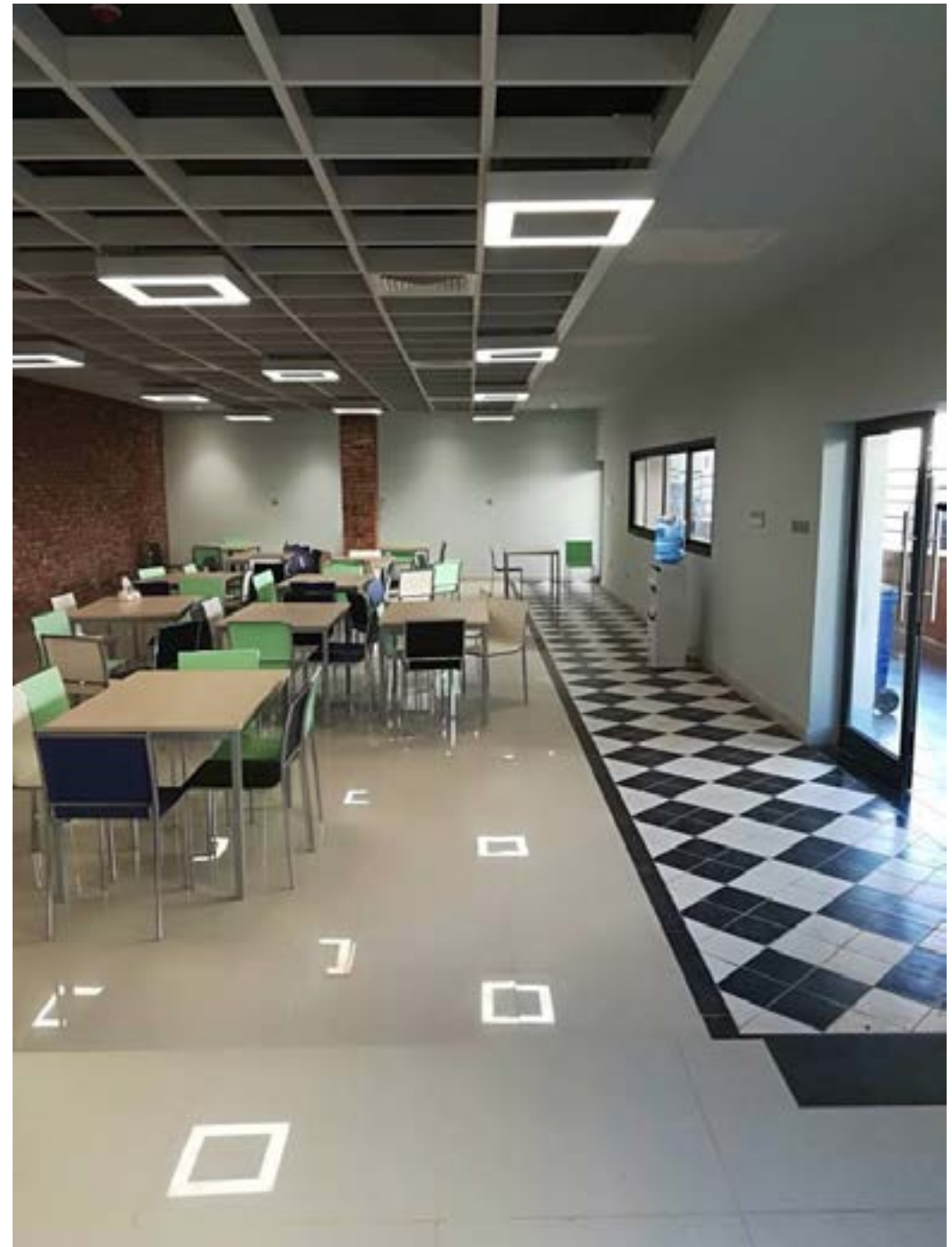
CEC Cafeteria is about 160 sqm, designed to take up to 120 people at the same time, and to serve the employees of the complex.

Its part of an old building, however to break the length visually I have separated it into two levels .

It also includes a 70 sqm Kitchen, and 50 sqm praying area.

The ceiling of a the cafeteria is a 60*60cm spacing between a metallic grid with a black background, where the air diffusers and lamps are hung from the ceiling with hanging brackets.





CAFETERIA EXTERIOR

The challenging part about this site is that it was an existing old building surrounded by modern buildings in the engineering complex. Also the road inside the complex was elevated to solve drainage issues, and to slope down to the higher level main road surrounding the complex.

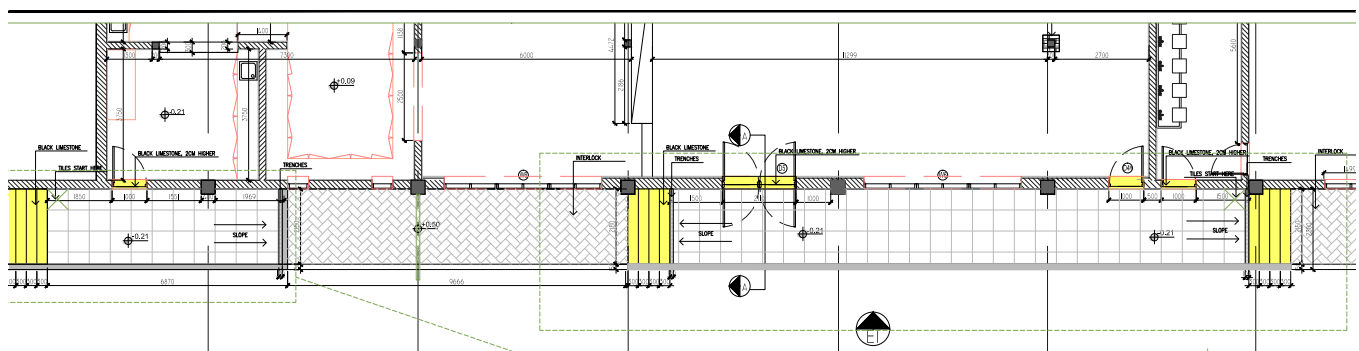
However we had to come up with a solution to enter the Cafeteria through steps on two sides. the mechanical system is exposed, and the diffusers are installed within the grid. Steel louvers were designed as a canopy to retain rain water, and also to maintain the modern design of the complex.



Existing building

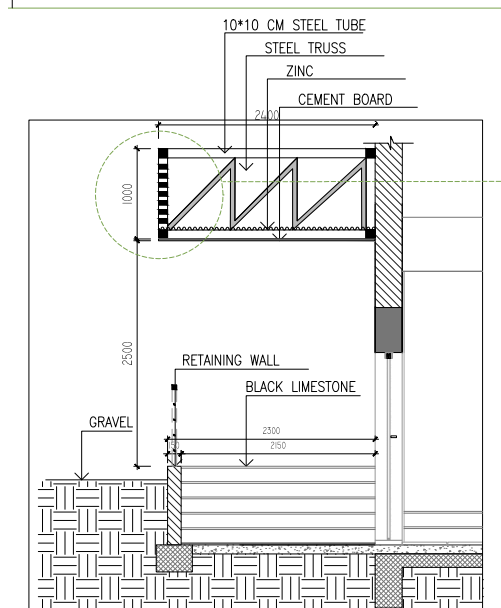


Building after adding exterior Steel louvers



A circular logo with a green border. The text "R.C.P.2" is in the upper half and "A302" is in the lower half, separated by a horizontal line.

R.C.P.1
A302



WALL SECTION 1

SCALE 1:30



The main Building I was assigned to work on was BLock 4 (for Spare Parts), its a 2000 sqm building, includes a large storage area, as well as office space. My job included planning the area, creating an interior and exterior design, MEP drawings, architectural drawings, and 3d views, also dealing with different contractors for the building and supervising them.



MAIN RECEPTION

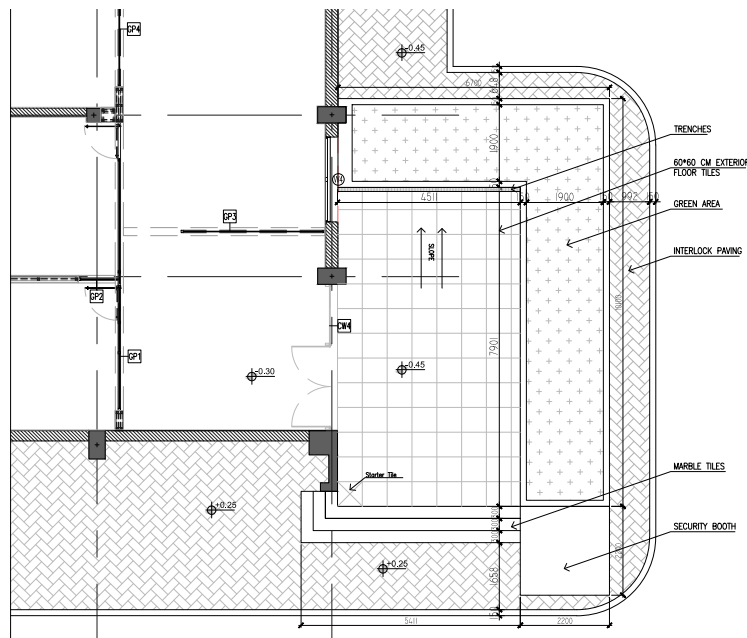
The building consists of two receptions, the main reception is for customers and consists of a cashier part, and a receptionists part, which includes a window to link it to the storage area to serve the customers through it. It also consists of a large waiting area.

The other reception is much smaller, and only accessible to the employees.

The yellow wall was a way to match NewHolland theme, I took as built measures after plastering to make sure the tiling process was accurate, and also as built measures to draw and design the curtain walls and glass partitions details.







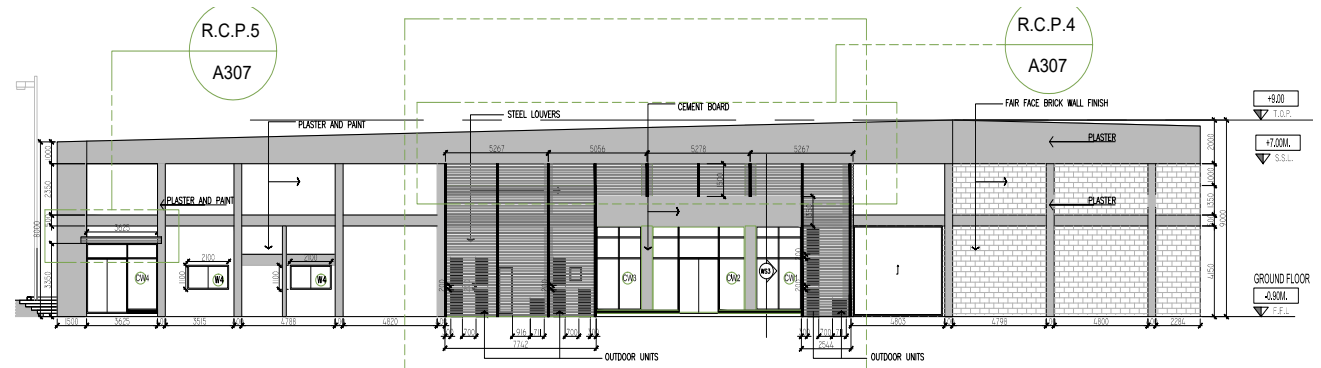
The Storage area is only accessible through the dispatch area for security purposes, and there's another emergency exit on the other side. Also automatic Sprinklers are used for fire protection in the building. The store is designed for two stories racking system. The lighting system includes a sky lighting strips across the storage area, as well as artificial lighting

My task also involved designing the firefighting system, and place sprinklers system on the storage area, and by taking as built measure to make sure the 2 stories high racking system, sprinklers, lighting and skylights are all proportioned.

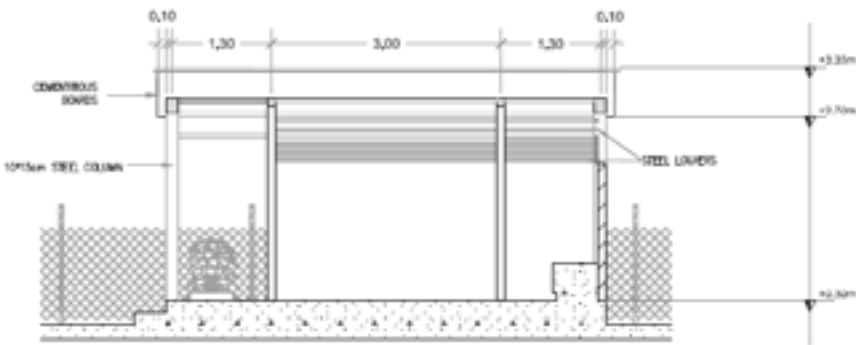
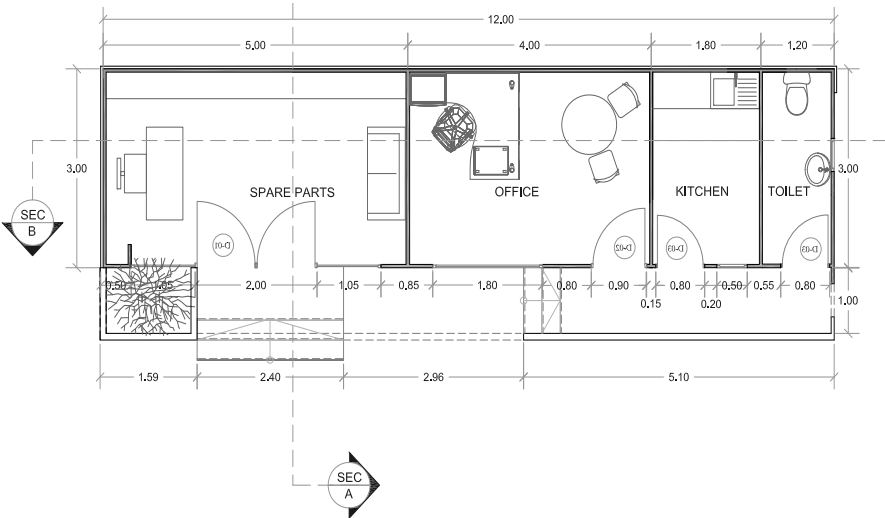


One of the biggest challenges was the east side openings, because due to drainage issues the exterior road was leveled up to be a bit higher than the main road, therefore, all the openings needed about steps to reach them, which needed canopies to prevent the rain water from entering the building.

The canopies were also measures to place the AC unites to improve the exterior elevation, and to somehow match the rest of the complex, and due to the project's low budget.



07 **CTC ENGINEERING SOBA DISPLAY AREA**
PROJECT TYPE : PROFESSIONAL
JUNE 2014- SEP 2014



08 ALDAMAR CENTER FOR AGROTECHNOLOGY TRANSFER AND APPLICATION (AUDITORIUM)
PROJECT TYPE : PROFESSIONAL
JAN 2017- APRIL 2017

