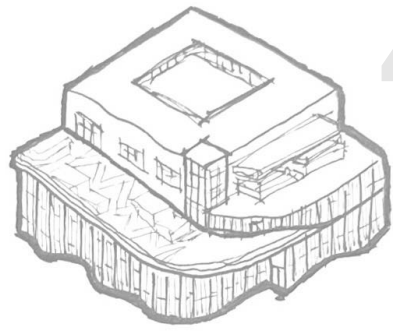




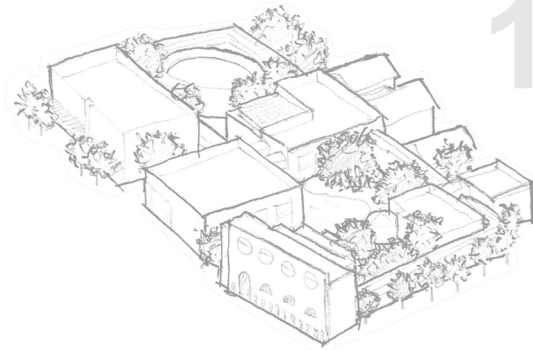
PORTFOLIO

Selected Works of Connor Rich



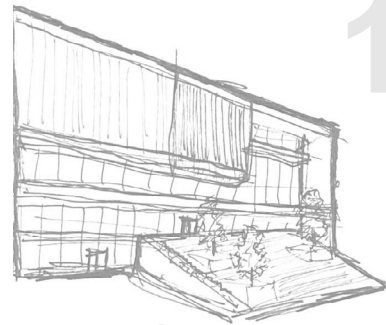
4

BREWERY



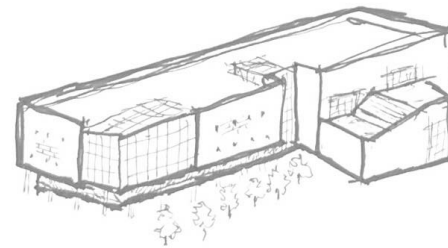
10

PORTLAND MUSEUM
OF ART



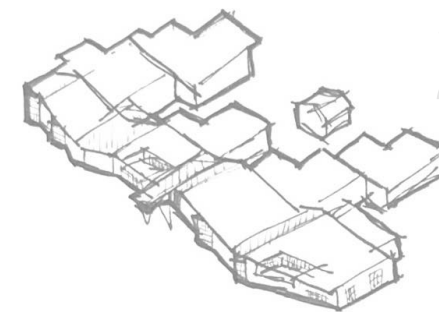
18

UTD STUDENT
UNION BUILDING



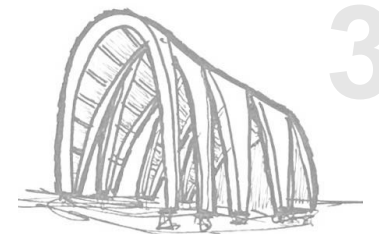
23

SCHOOL OF
ARCHITECTURE



28

NET ZERO
ELEMENTARY SCHOOL



34

NOMADIC
PERFORMANCE
STAGE

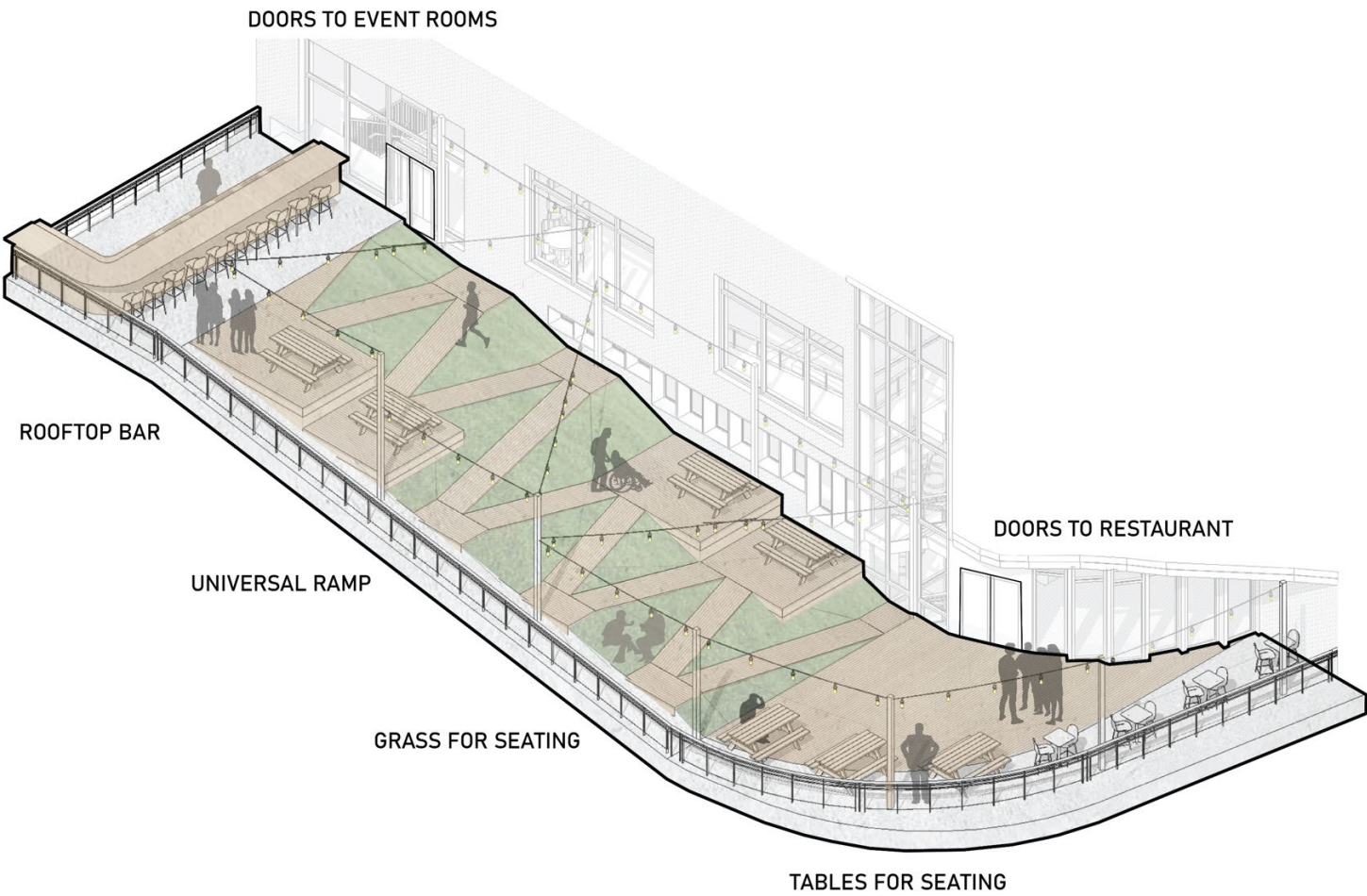


EUGENE CENTER FOR BREWING EDUCATION

Eugene, Oregon
40,000 SQ ft
Spring 2020

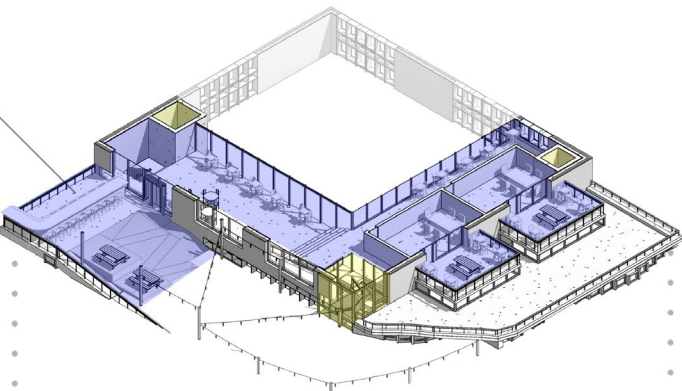
Located in the heart of Eugene Oregon, this building is a social hub for nightlife while acting as a world class brewing education center by day. This project aims to bring different user groups together and teach the community about the science of brewing.

The bar on the second floor has access to a rooftop patio that connects the second and third floors with a ramp. Guests are welcome to relax and walk up the meandering ramp universally designed to allow everyone explore the brewery.



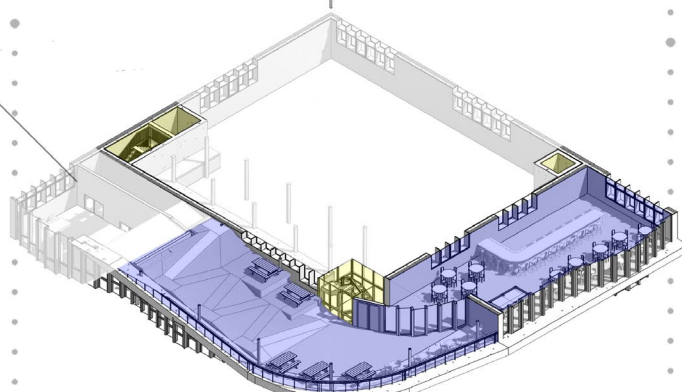
4TH FLOOR SOCIAL LEVEL

ROOFTOP BAR
2 X EVENT ROOMS
2 X EVENT PATIO
UNIVERSAL RAMP
VIEW OF BELOW



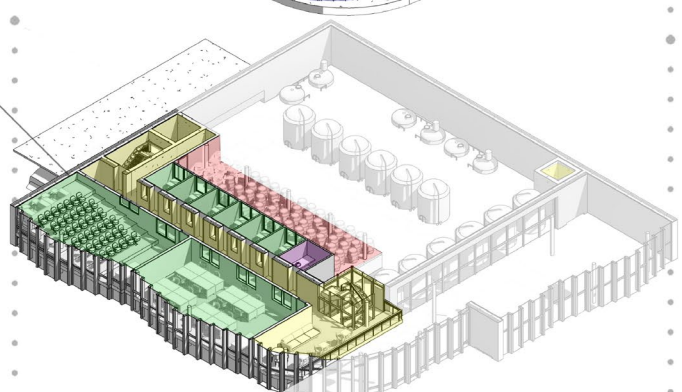
3RD FLOOR TASTING LEVEL

BAR
ROOFTOP PATIO
TASTING ROOM



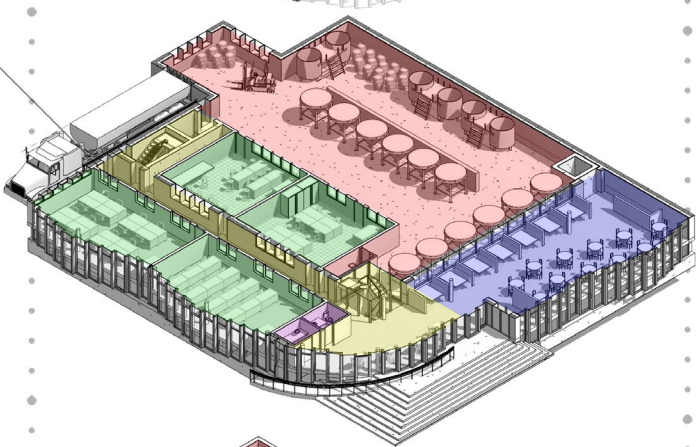
2ND FLOOR EDUCATION LEVEL

2 X CLASSROOMS
6 X OFFICES
BATHROOM
STUDENT LOUNGE
TALL STORAGE



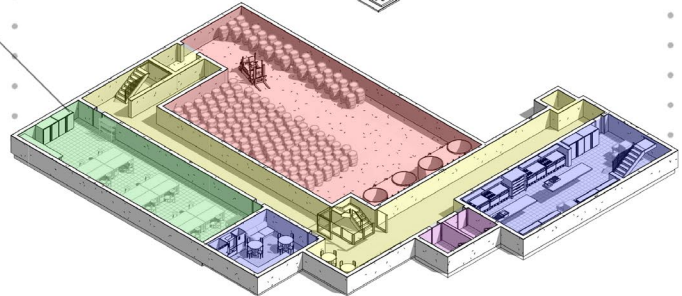
1ST FLOOR MAIN LEVEL

BREWING SPACE
RESTAURANT
LOBBY
2 X CLASSROOMS
2 X LABS
2 X BATHROOM



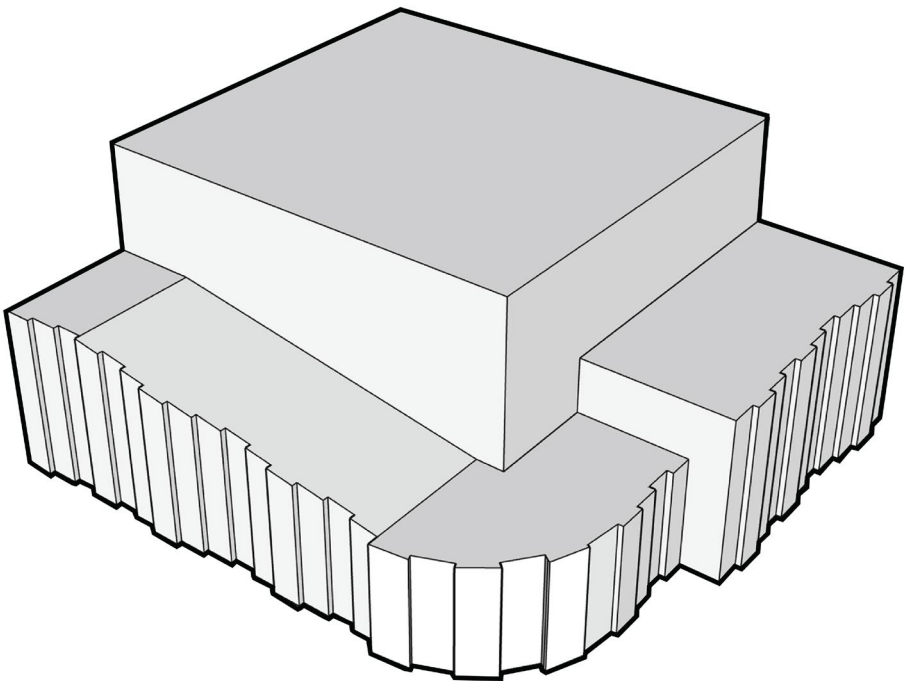
BASEMENT EMPLOYEE LEVEL

LARGE LAB
KITCHEN
BREAK ROOM
LARGE STORAGE
2 X BATHROOM

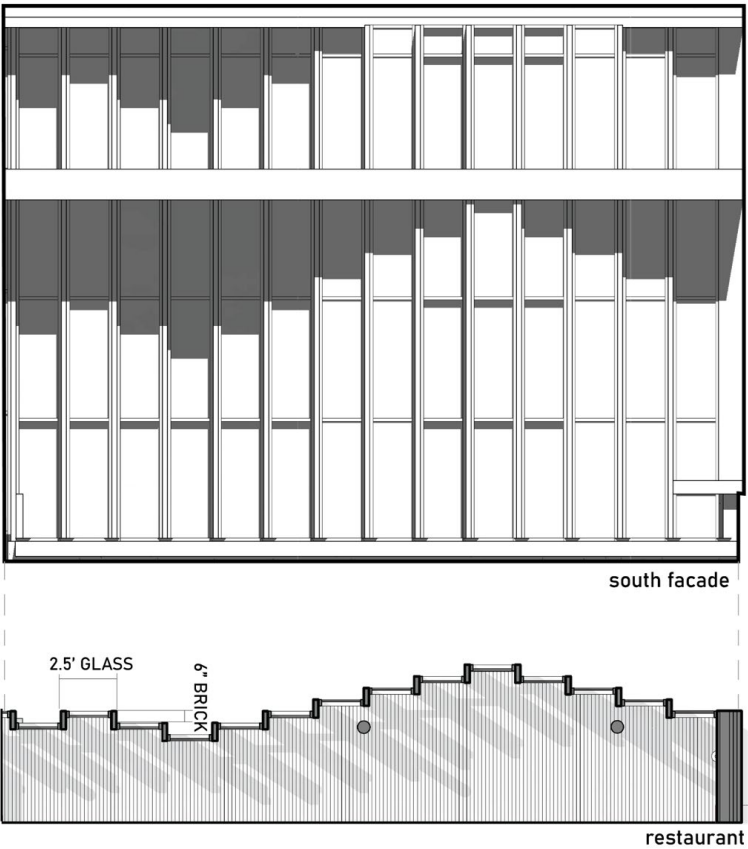
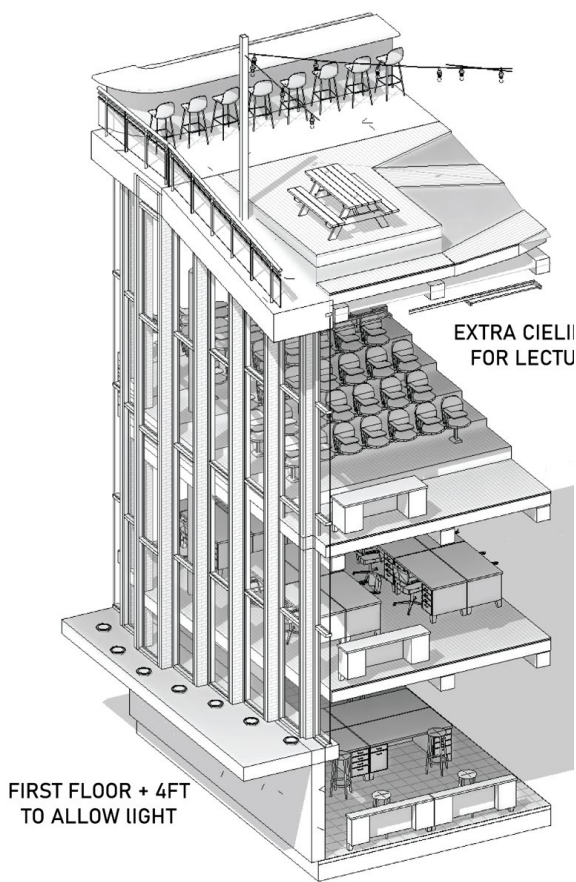


Massing

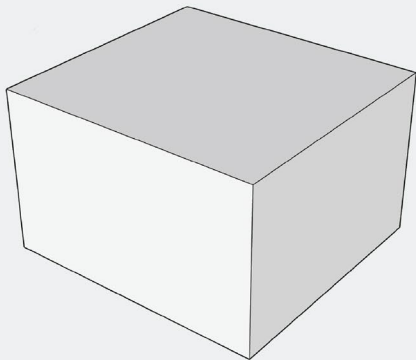
The brewing takes place within the center mass of the building in a large warehouse structure. The restaurant and classrooms are constructed of lightweight steel and glass materials that wrap around, protect, and expose the old fashioned brick structure. The modern facade has offset windows that provide shade and create a flowing effect that appears to capture movement in the facade.



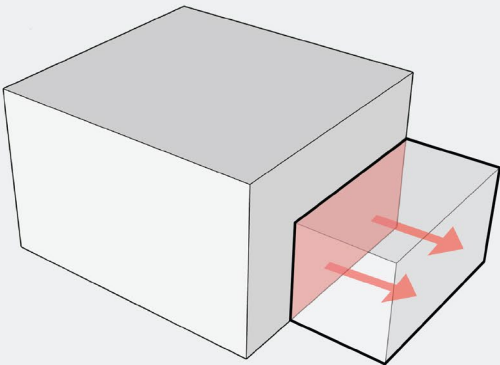
Facade Details



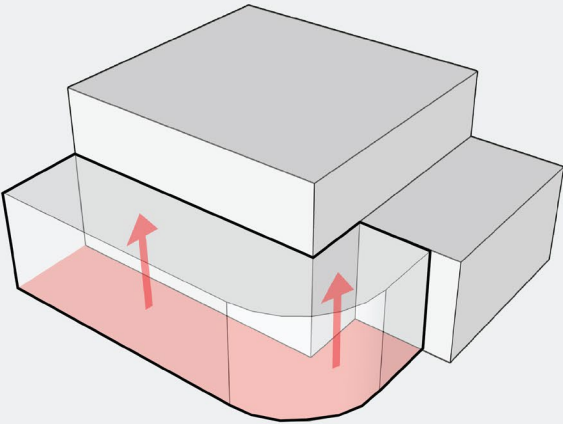
TRADITONAL BREW
WAREHOUSE FORM



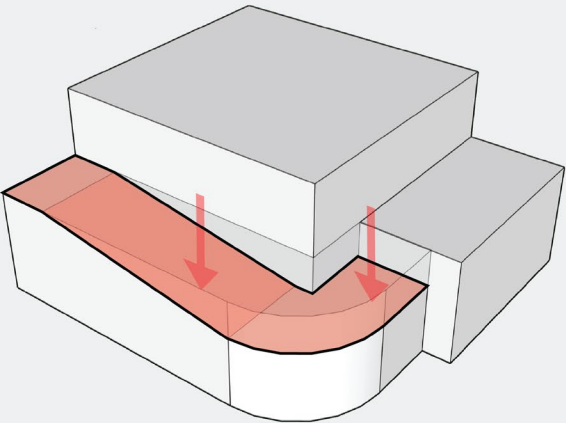
EXTRUDED RESTAURANT
ALONG 6TH AVE



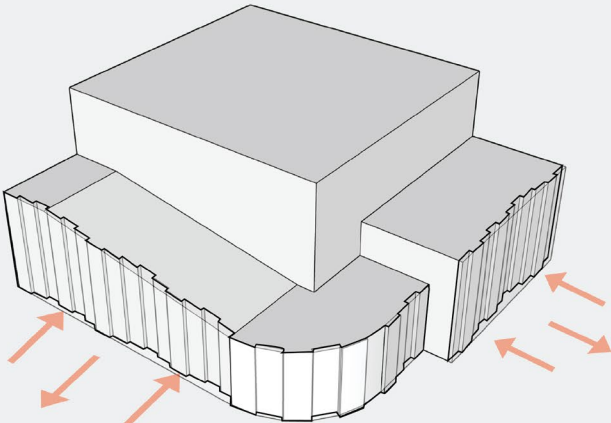
EDUCATION BLOCK
WRAPS THE BREWERY



PUSH DOWN ROOF TO
CONNECT 3RD & 4TH FLOOR



OFFSET WINDOWS TO
CREATE FLOWING FACADE

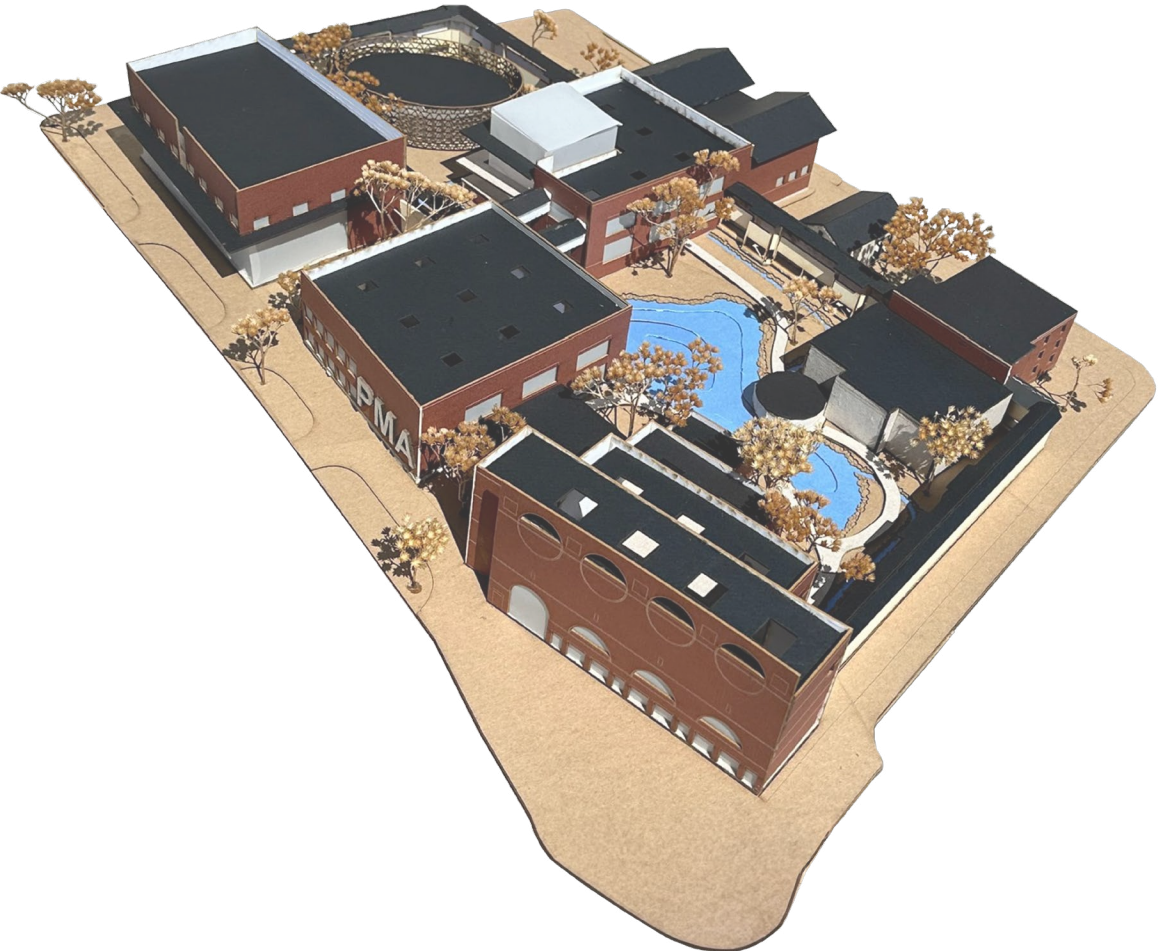
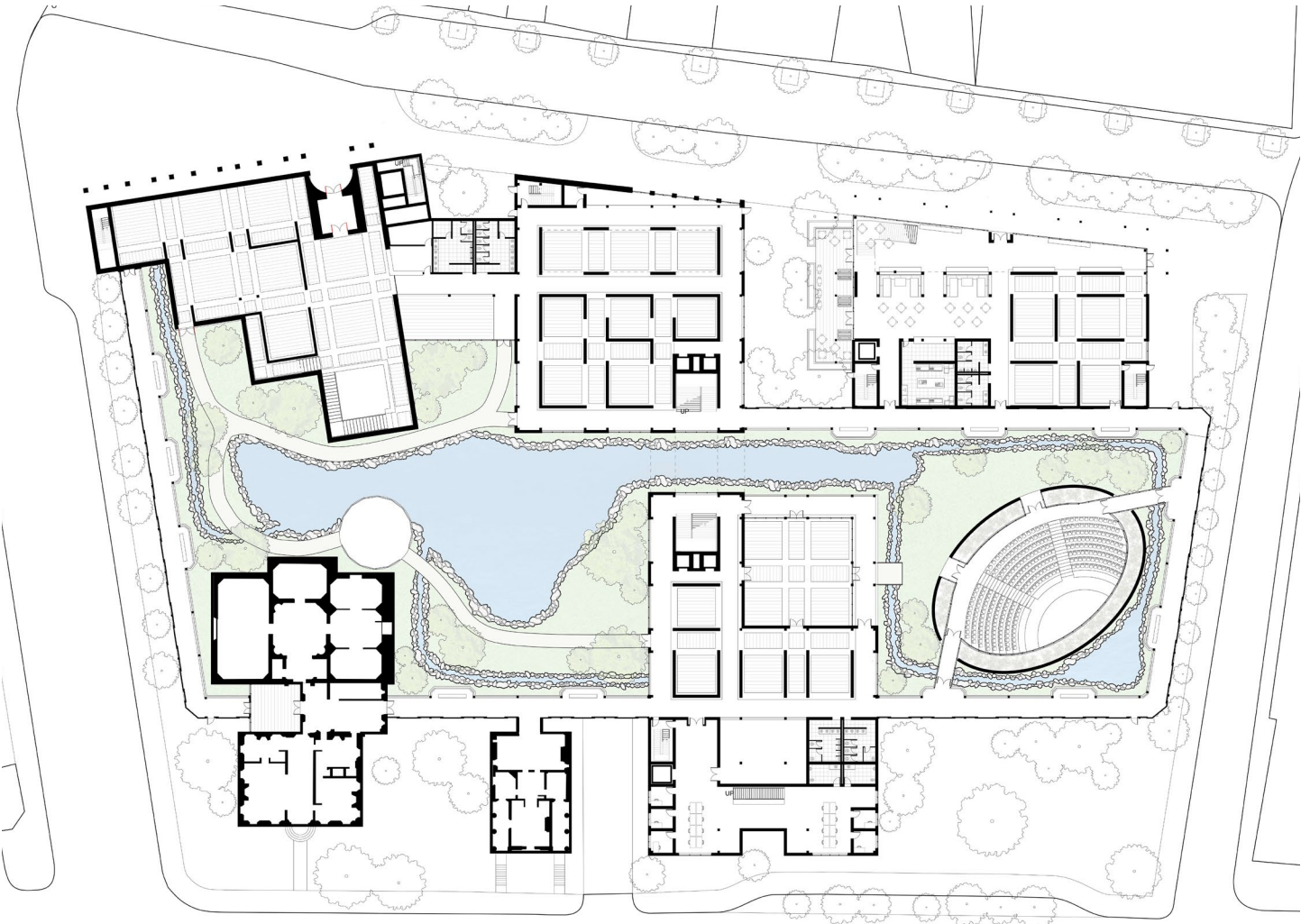
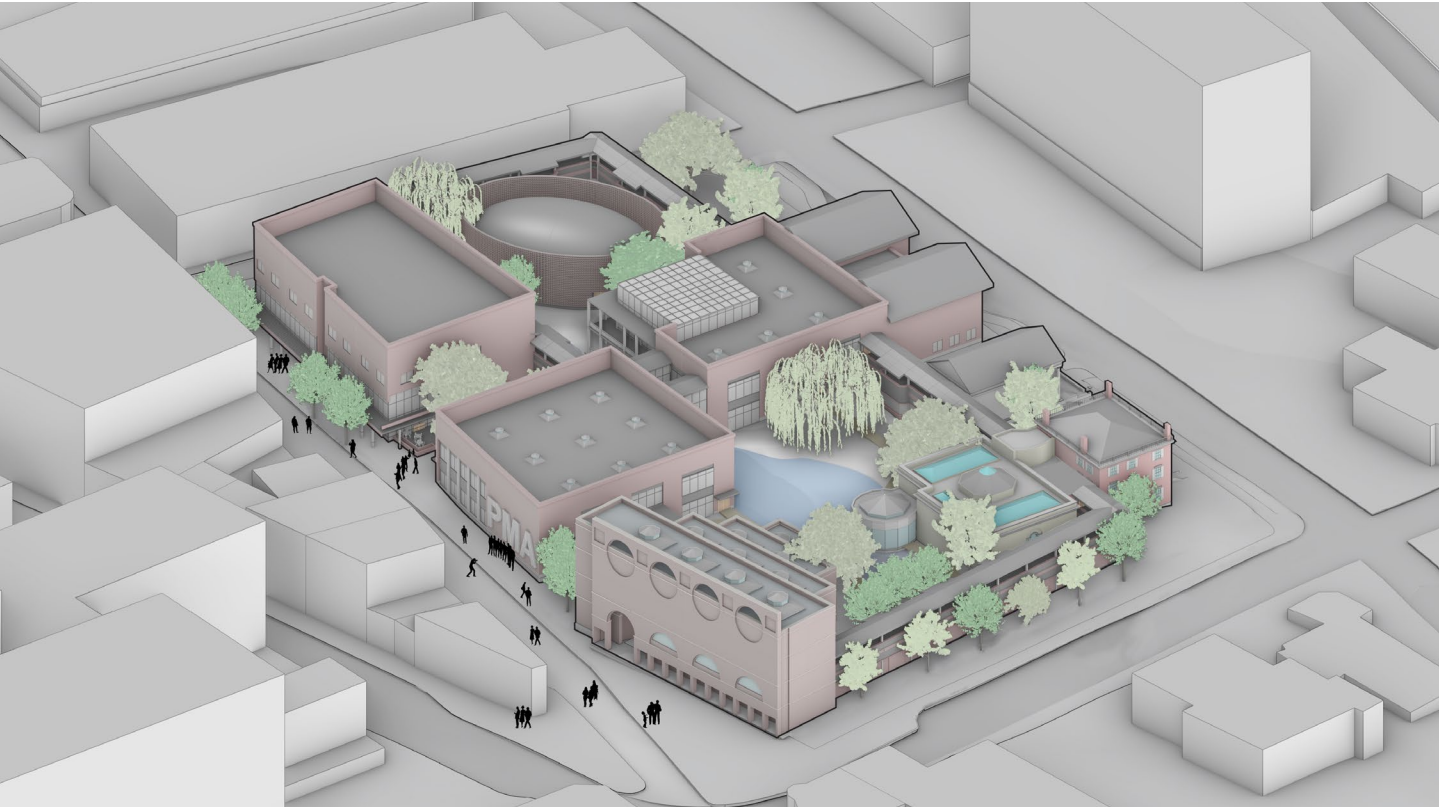




PORTLAND MUSEUM OF ART EXPANSION

Portland, Maine
207,000 SQ ft
Spring 2023

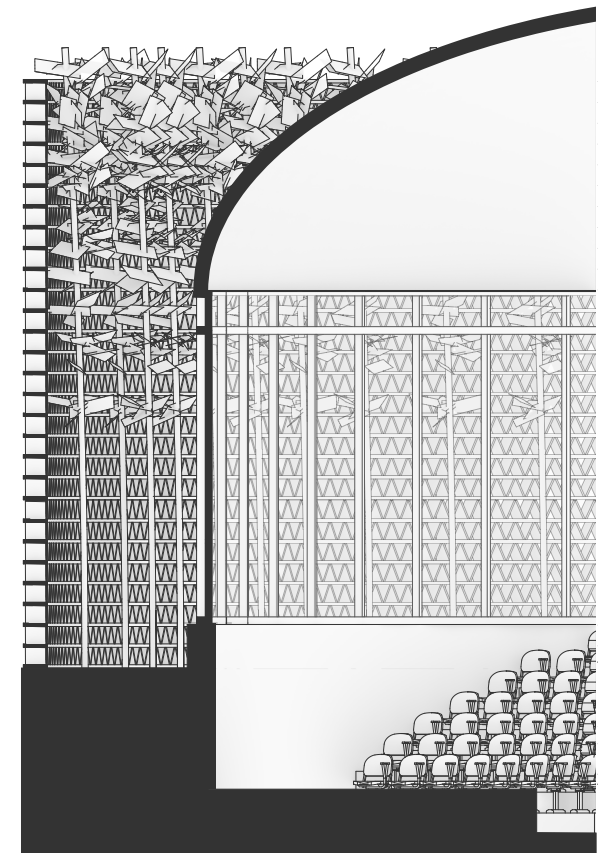
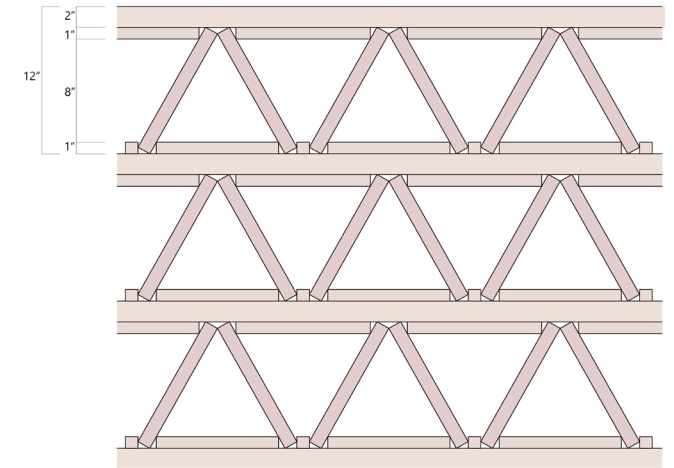
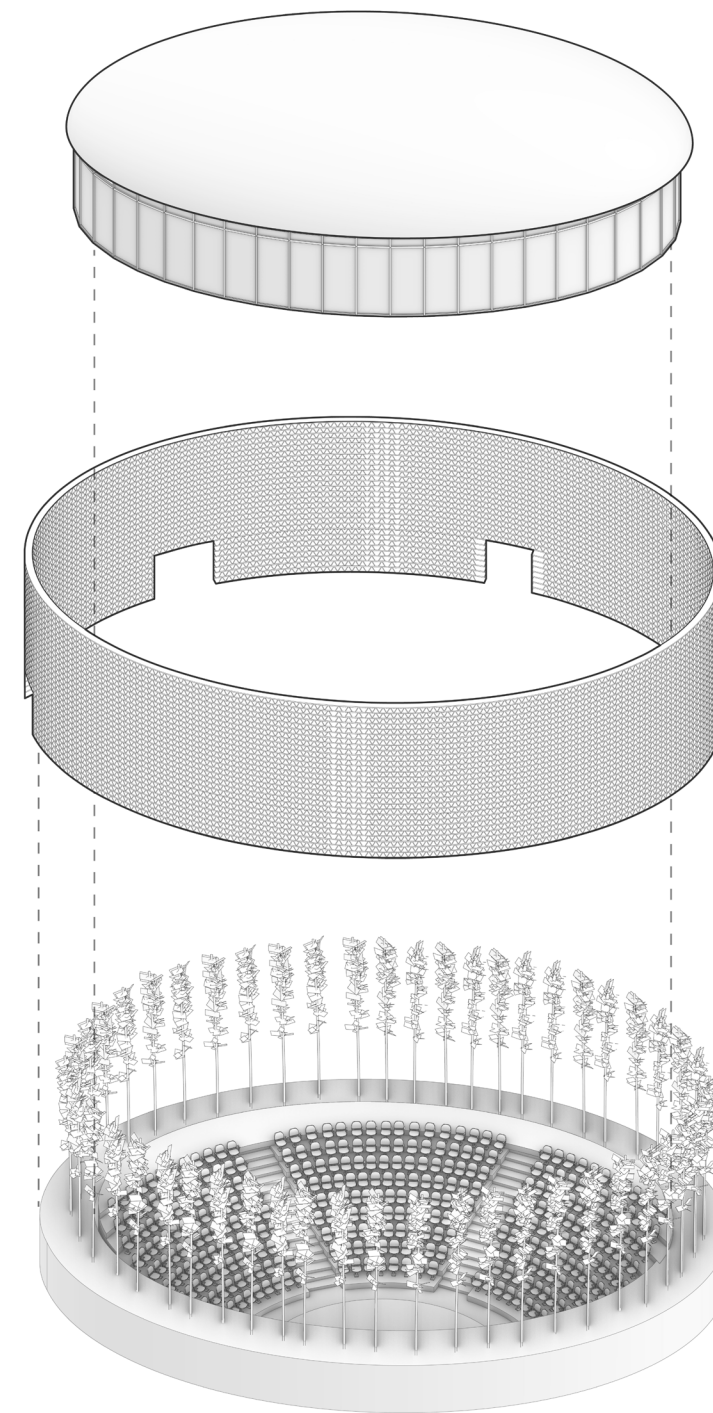
In 2021 the Portland Museum of Art looked to expand their museum campus. The objective of the Portland Museum of Art expansion is to create a cohesive campus by connecting its separate buildings through a network of circulation corridors along the perimeter. These corridors enclose an interior courtyard garden that features a serene reflection pond, pathways, and streams that align with the circulation routes. Water plays a pivotal role in organizing the space, with flowing water symbolizing movement while tranquil, still water signifies a sense of rest and establishing a sense of place.

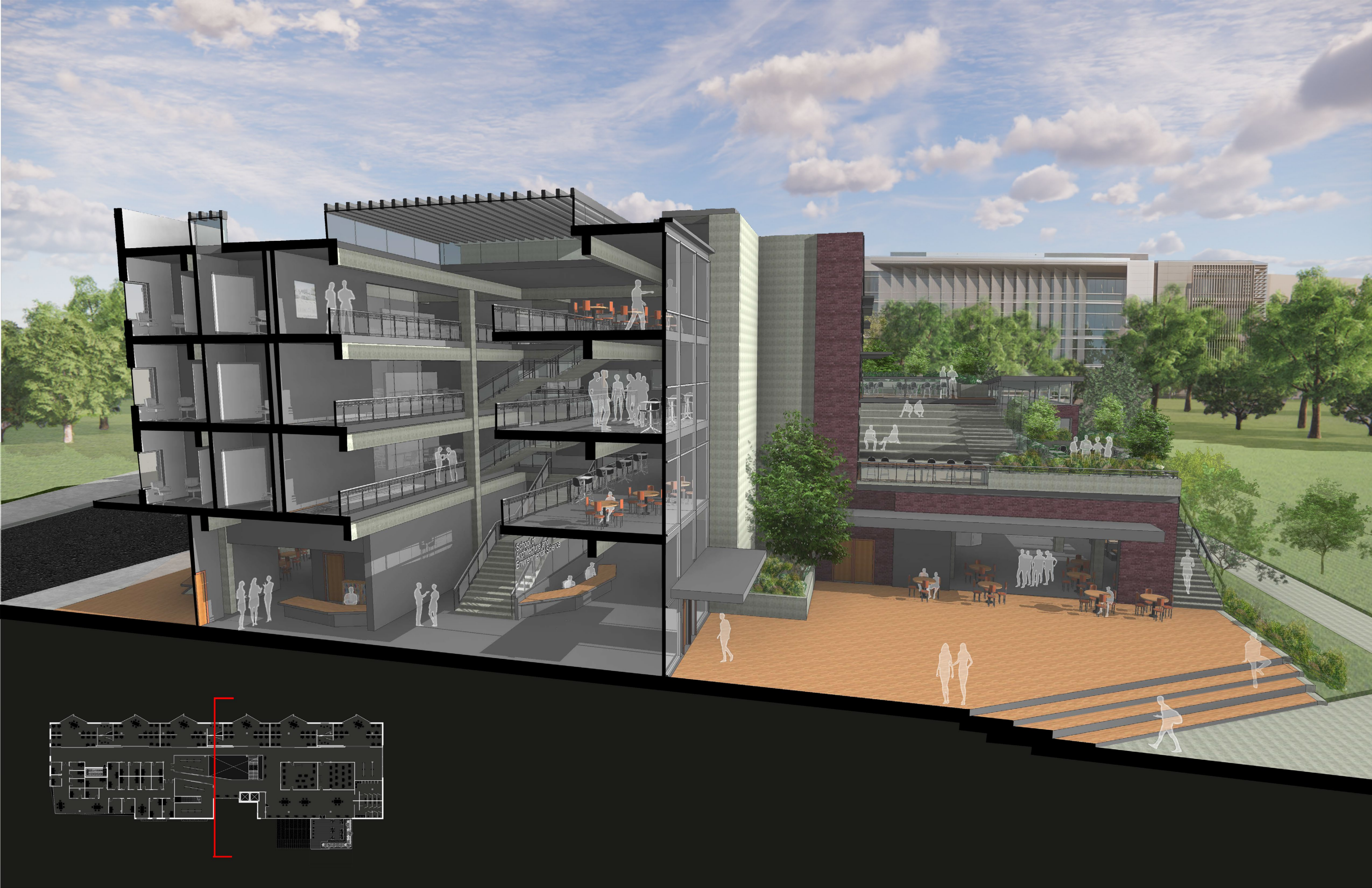




Performance Space

The performance space is a vital component of the program, therefore, the construction of this building aims to be unique. The structure comprises three layers that contribute to its uniqueness. Firstly, a permeable terracotta screen is formed by tilting tiles against each other, creating an intriguing visual effect. Secondly, an internal bamboo forest is allowed to grow freely through the screen, infusing the space with a natural and organic ambiance. Finally, the addition of glazing enables captivating views from within. This multi-layered system not only provides depth to the space but also maintains a consistent theme of connecting interior spaces with outward views of lush vegetation.

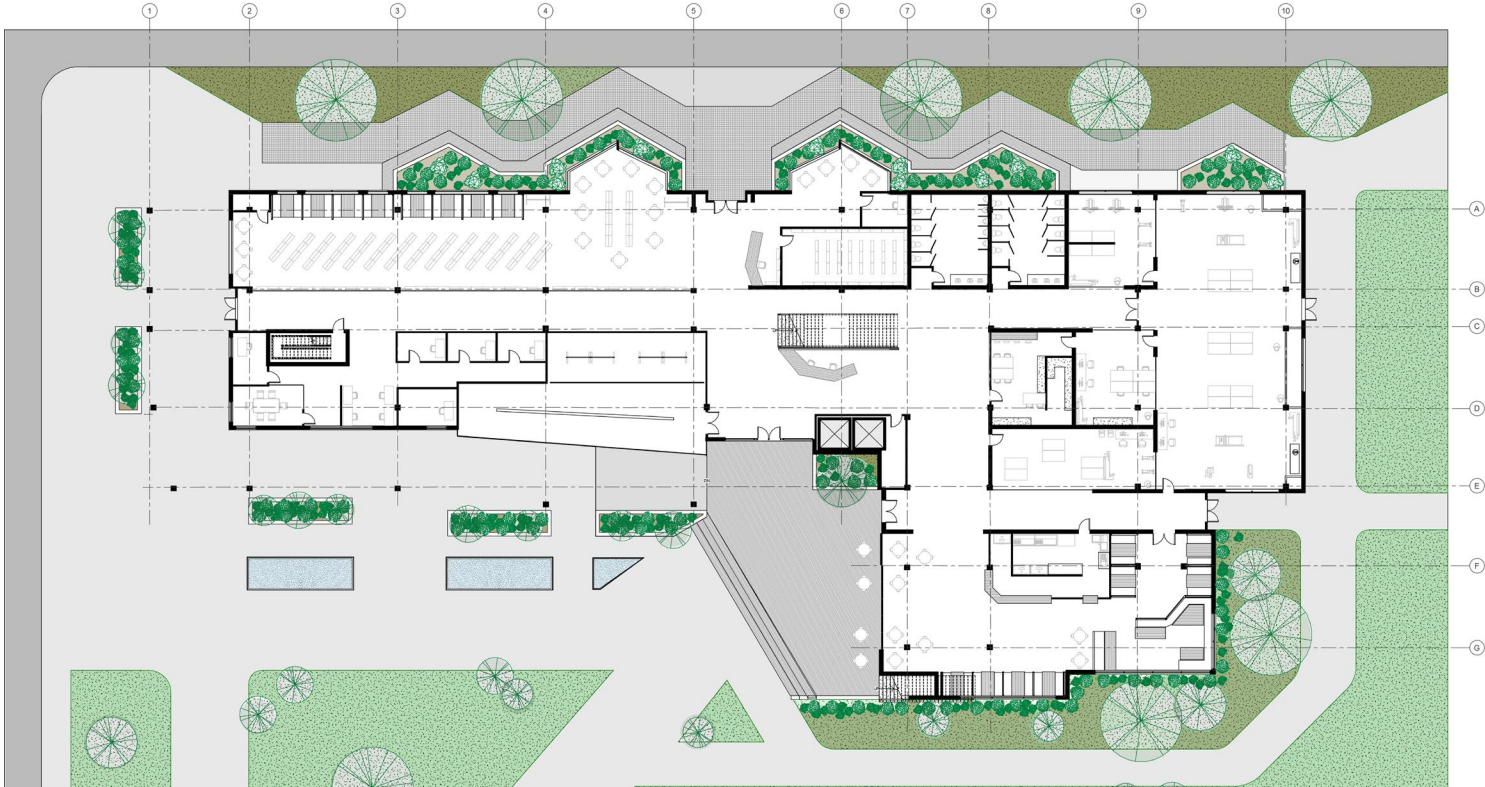




UNIVERSITY OF OREGON SCHOOL OF ARCHITECTURE AND ENVIRONMENT

Eugene, Oregon
109,000 SQ ft
Fall 2020

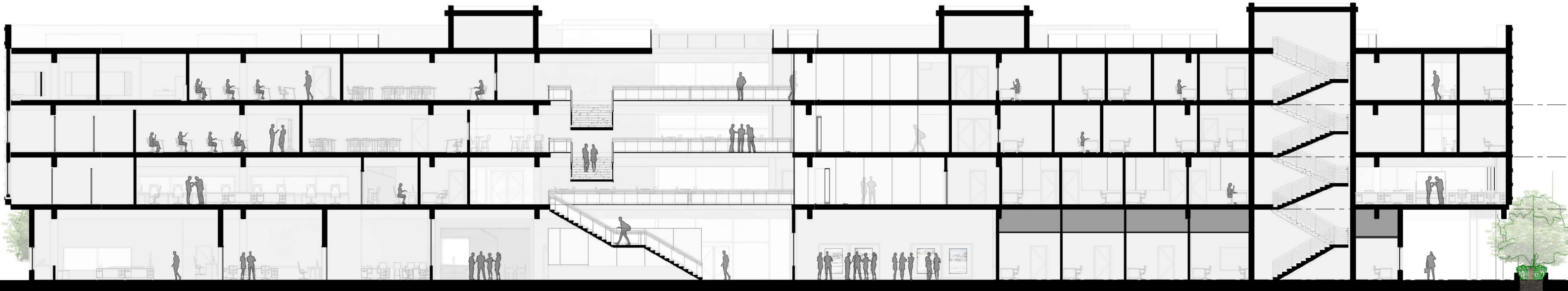
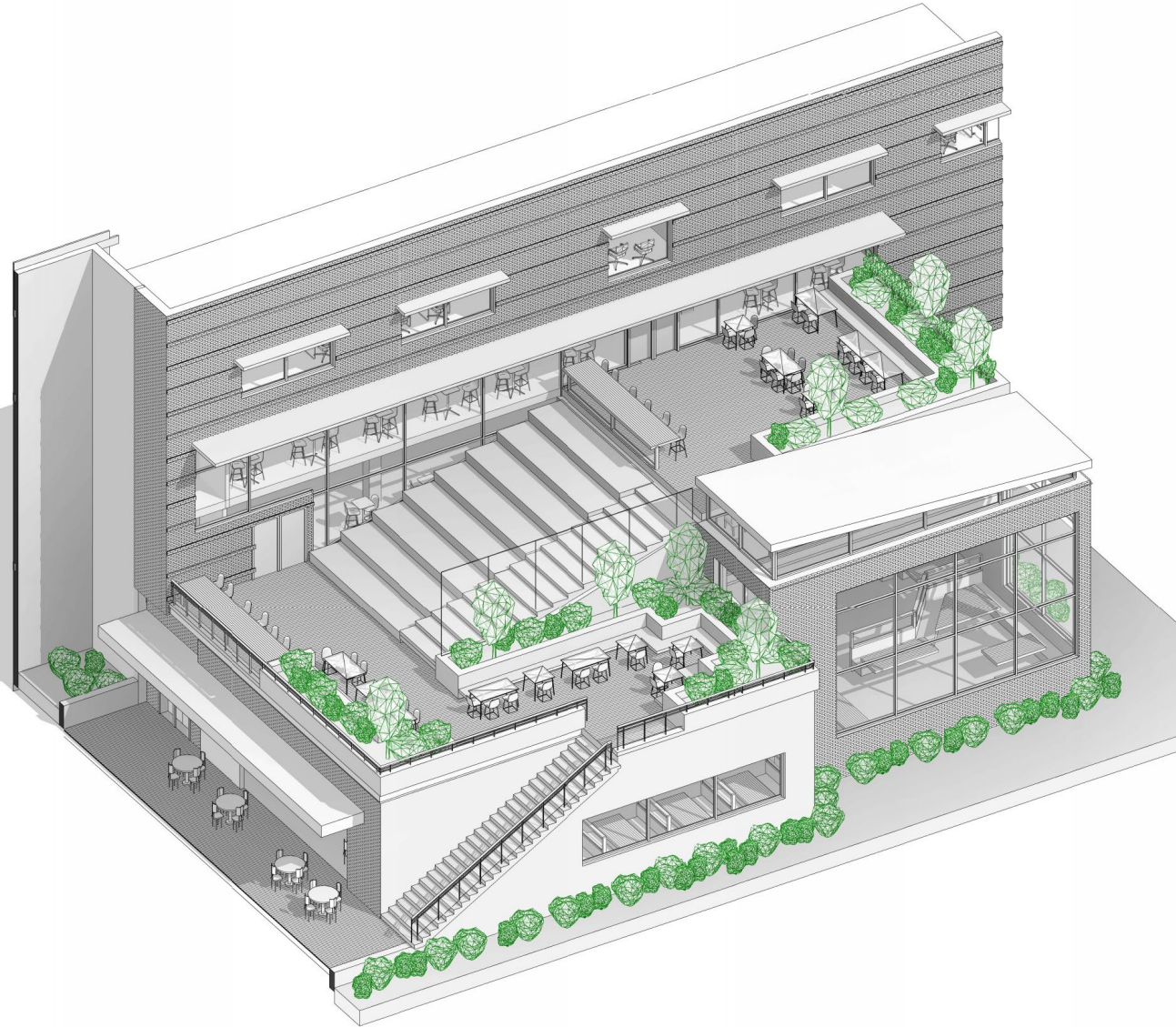
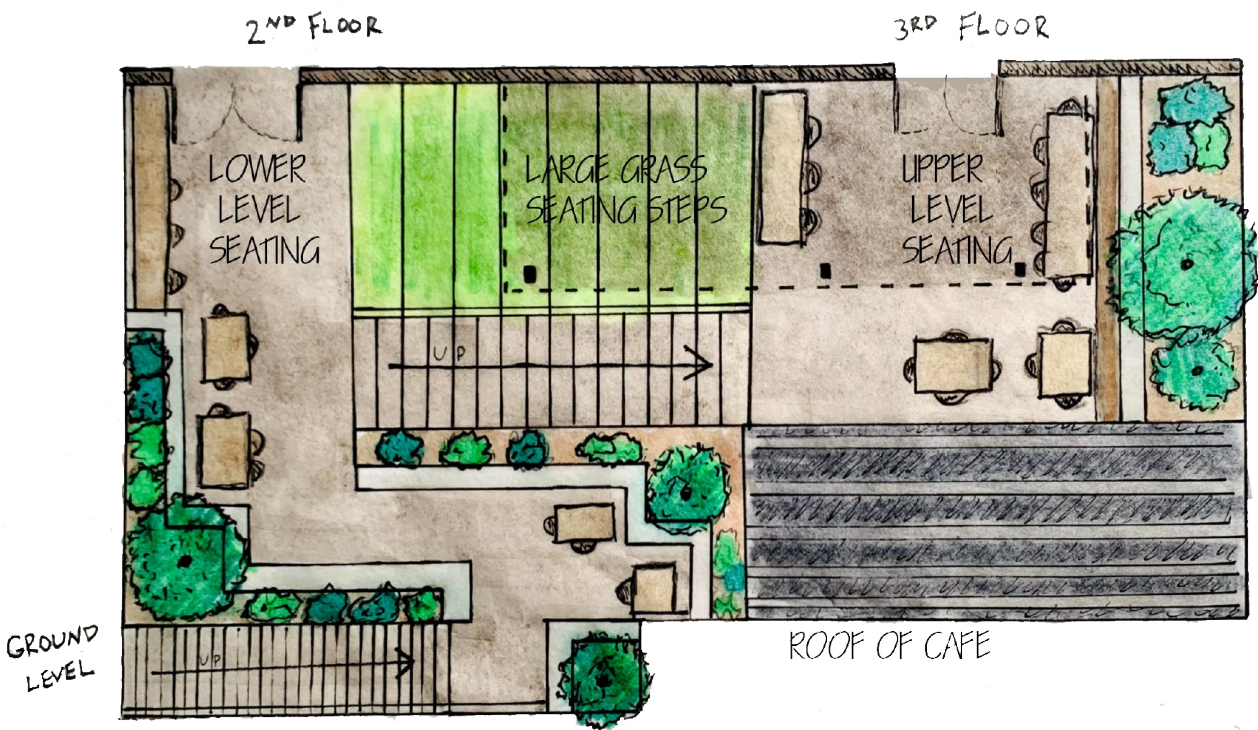
Set to be the third phase of a massive development on campus, the new school of architecture is focused on three critical concepts: establishing connection to the rest of the university community, provide elevated views of green space to the south, and an emphasis on flexibility so the building can adapt over time.



Multi-Story Terrace

The axonometric on the right shows the cafe and multi-story terrace that connects the second and third floors. The terrace acts as a shortcut to and from class as well as an impromptu meeting place for people wanting to study outside.

The cafe, also known as the hearth of the building, acts alone in breaking the horizontal symmetry. it draws people in as they walk along the lower corridor.



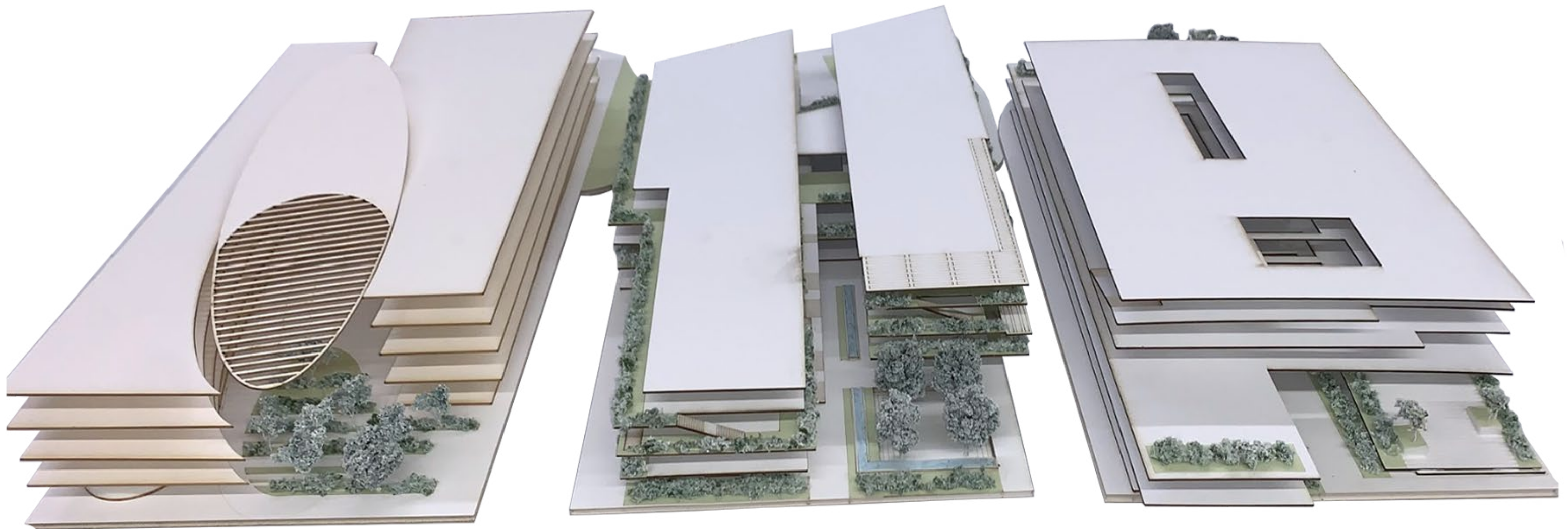


UNIVERSITY OF TEXAS DALLAS STUDENT UNION BUILDING

Dallas, Texas
100,000 SQ ft
Summer 2022

I had the opportunity to work for Perkins+Will in Dallas TX over the summer of 2022. Most of my time was spent developing iterations of a new Student Union Building for UT Dallas. Through hard work and late nights, our design was selected. The building will become the first mass timber project on their campus, and will foster activity for future students.

My focus was primarily on physical model building and big idea renderings. These quick massing models show relationships between slabs as well as the green terraces. The renderings aimed to capture student activity, The first a night rendering showing the amphitheater in use. And the second shows how students activate the large outdoor stairs on the front side of the building







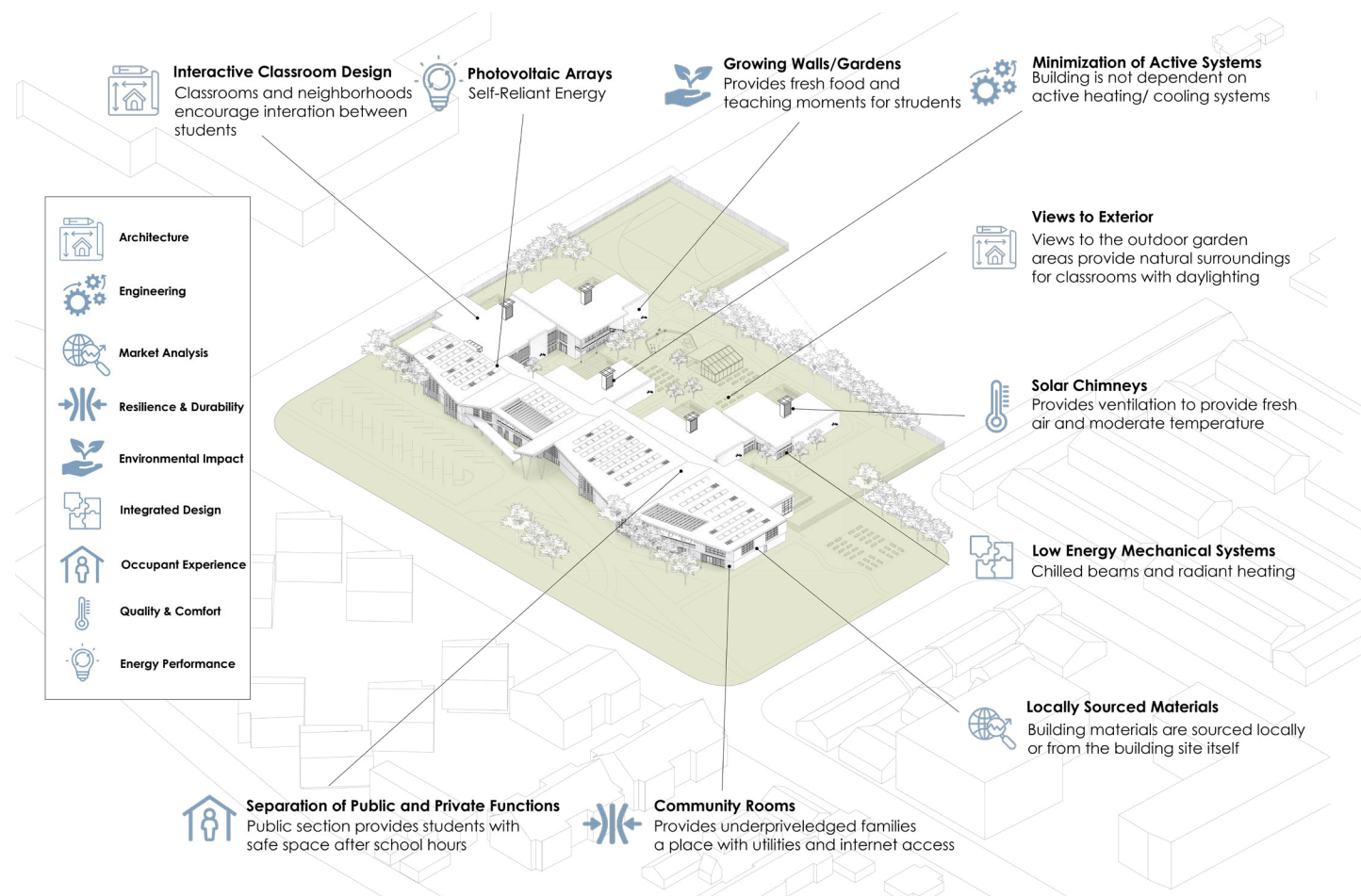
GATEWAY
ELEMENTARY

NET ZERO ELEMENTARY SCHOOL SOLAR DECATHLON DESIGN CHALLENGE

Portland, Oregon
60,000 SQ ft
Winter 2022

The Solar Decathlon is an international design competition that pushes architecture students to provide creative solutions to real world issues in the building industry. This project was a group effort, through hard work our design was a finalist in the Education category. Our School focuses on sustainability on display, outdoor learning, and fostering community. The western programs shelter the Eastern classroom wings creating a green corridor that acts as secondary circulation.





Sustainability on Display

Sustainable features used throughout the building are on display through an outdoor sustainability center. Students learn about growing food, composting, recycling, and harvesting energy through interactive stations at a child's scale.

The exterior spaces provide opportunities for Eco-learning and reduce the schedule of the buildings mechanical operations. Students are encouraged aged to participate in gardening activities through planter boxes and fruit walls. The fresh fruits and vegetables grown on site are free for students to take home for their families



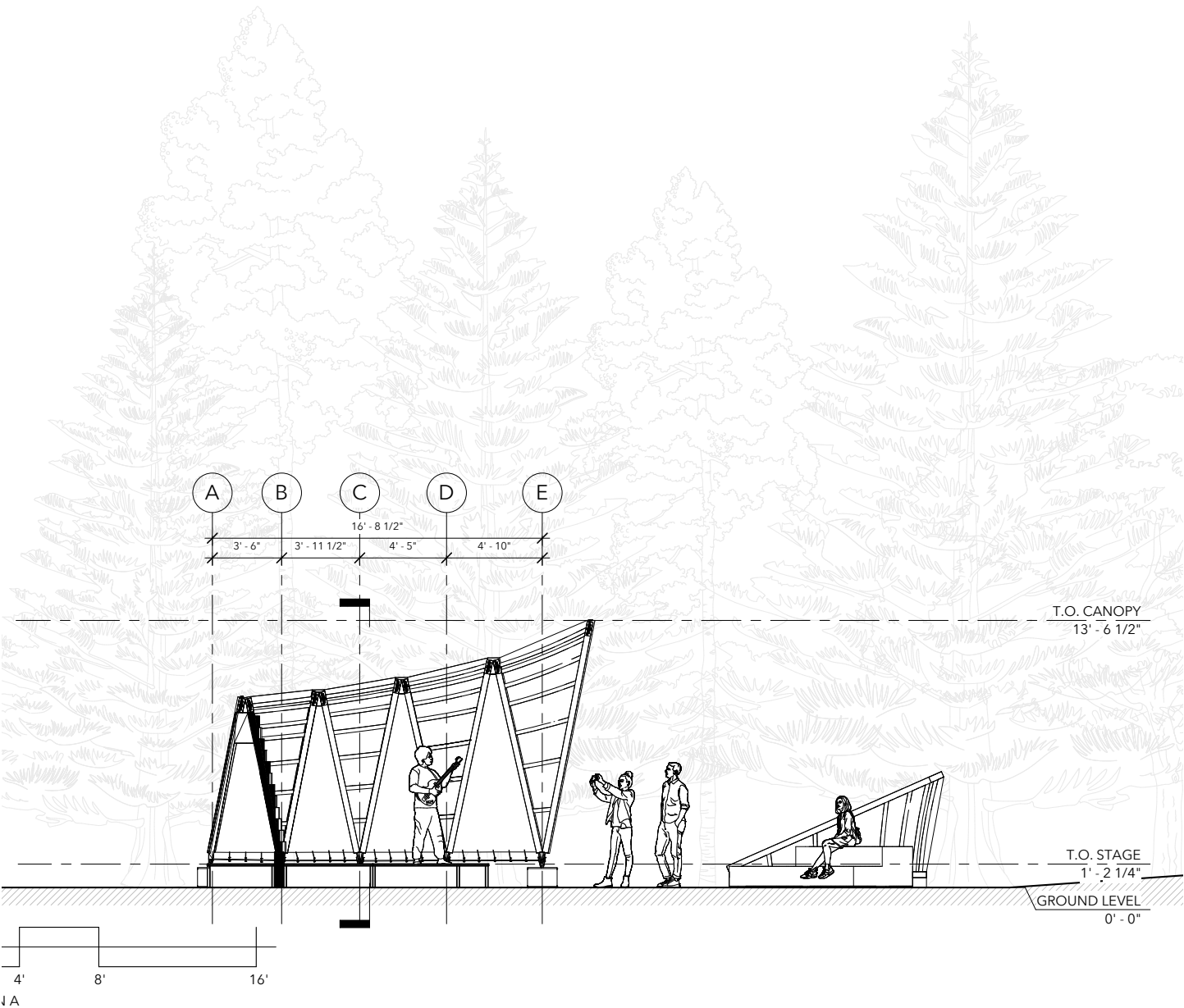
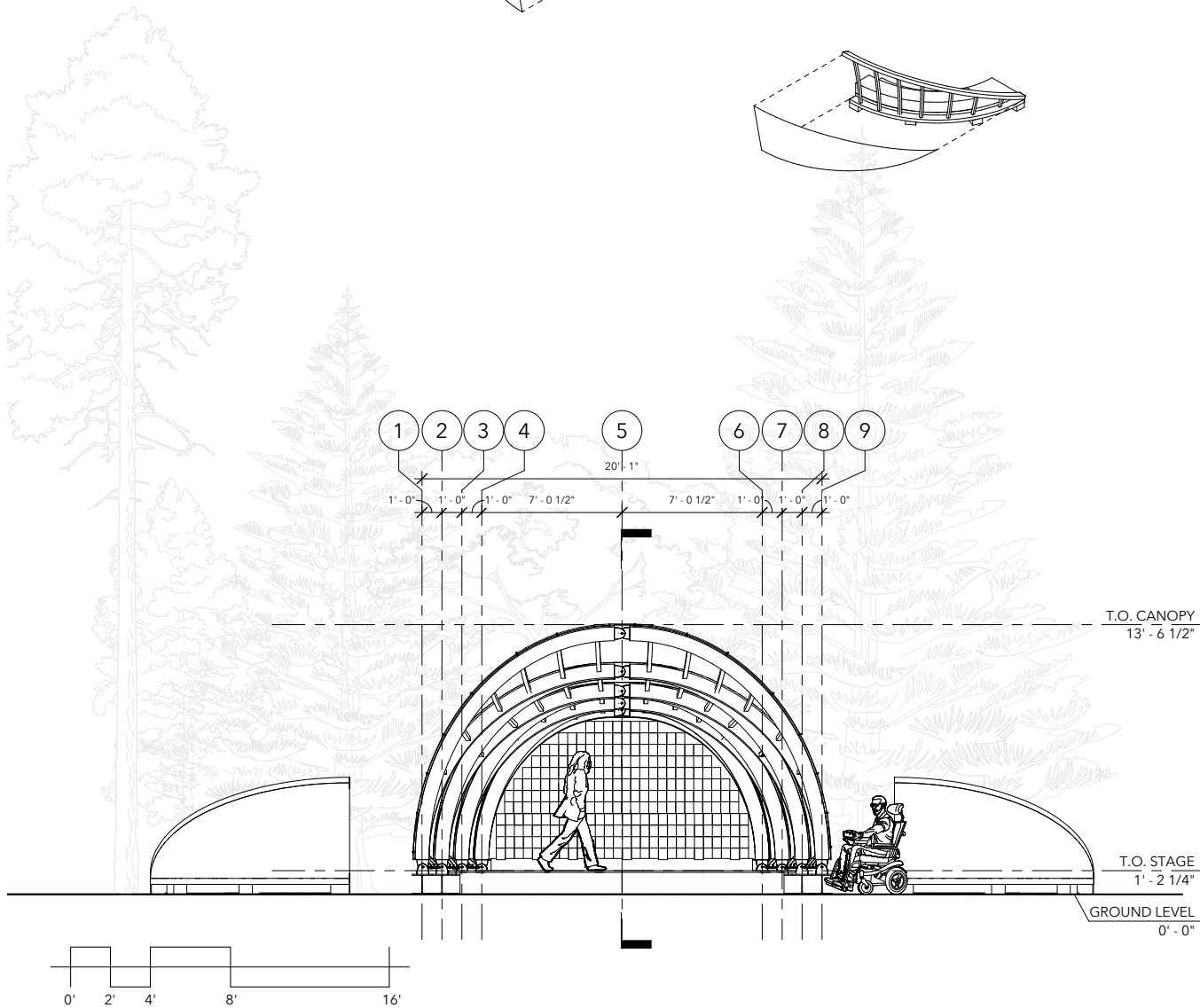
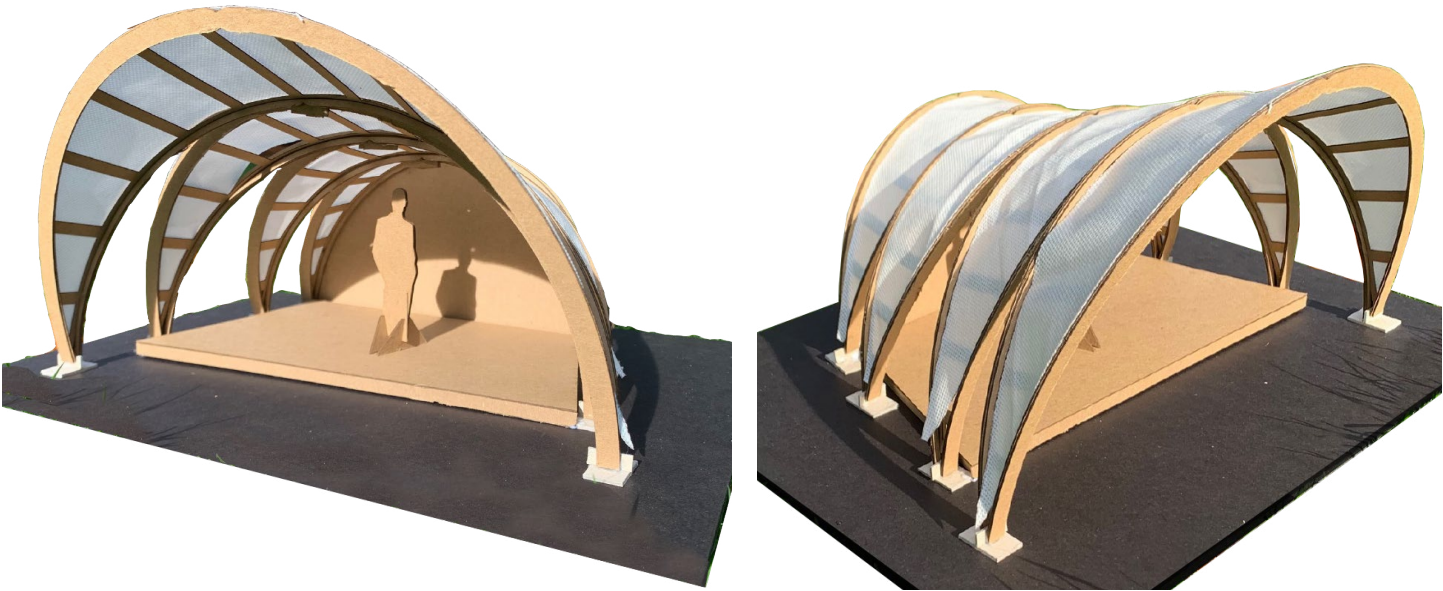
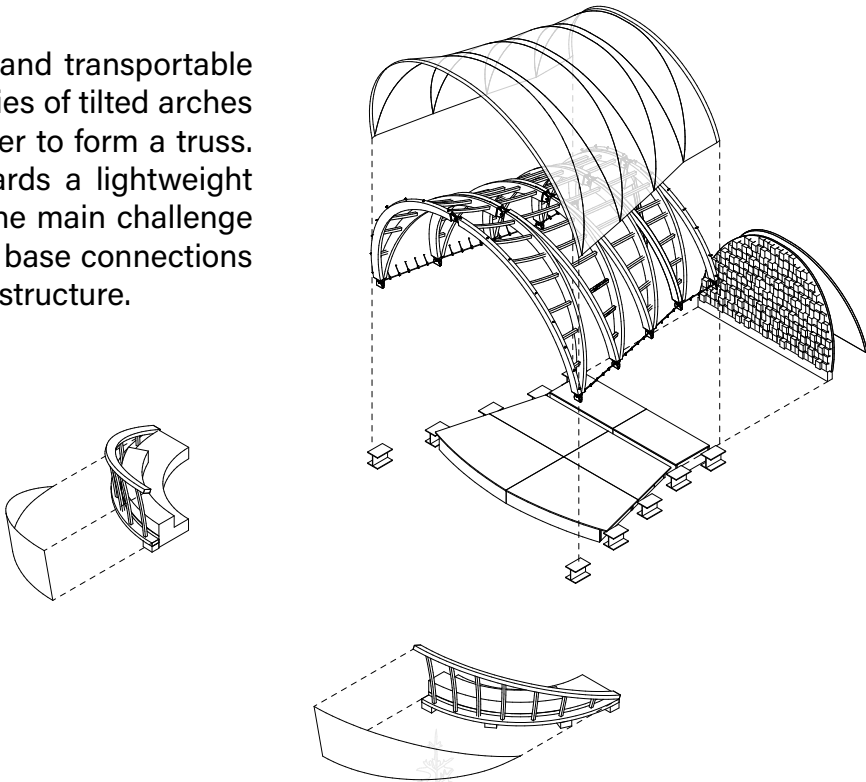


NOMADIC PERFORMANCE STAGE

TIMBER TECTONICS

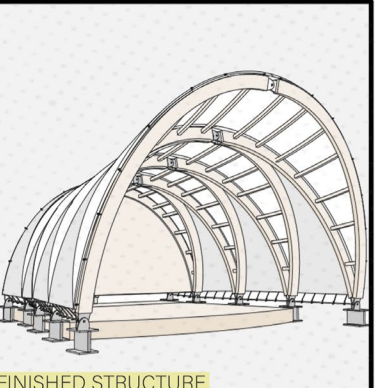
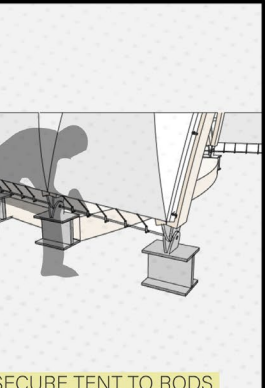
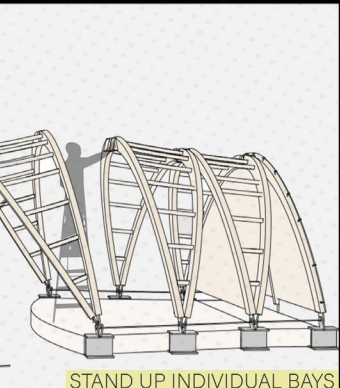
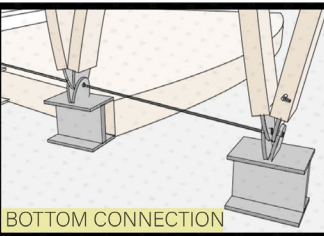
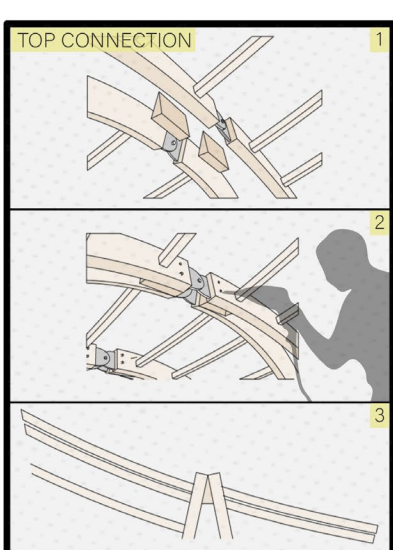
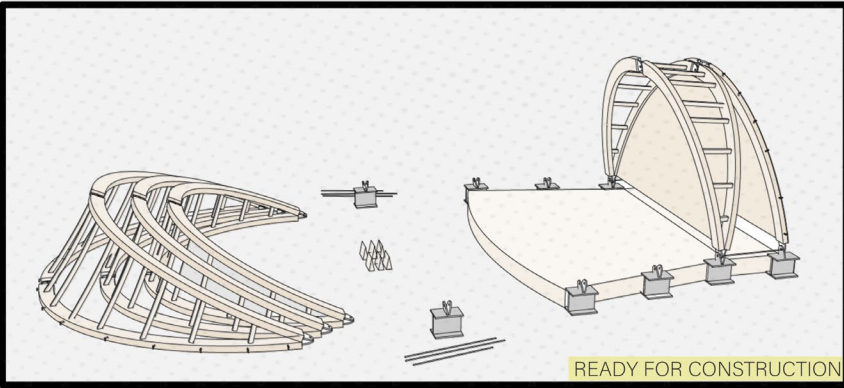
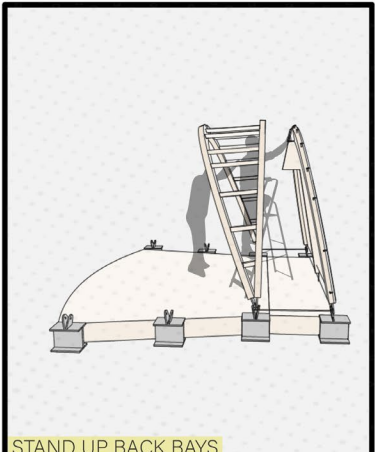
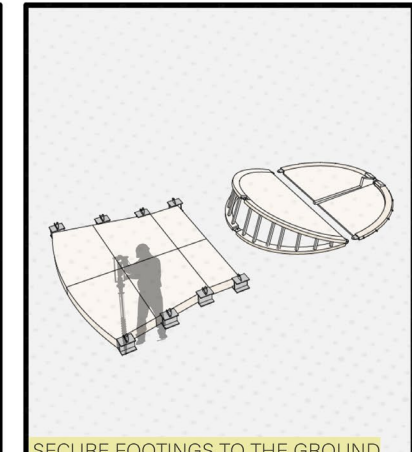
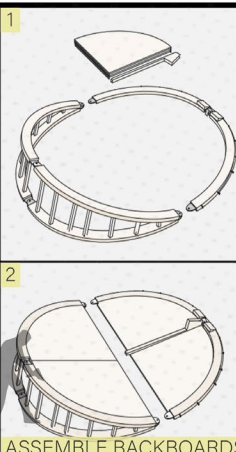
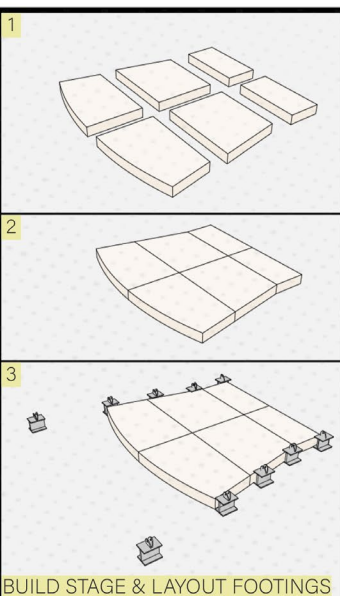
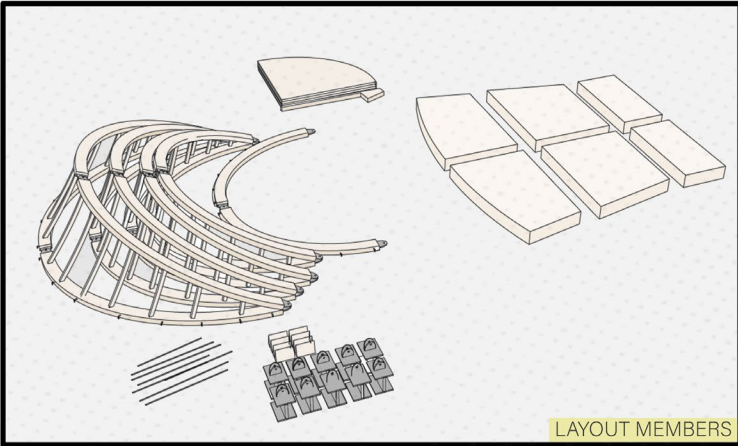
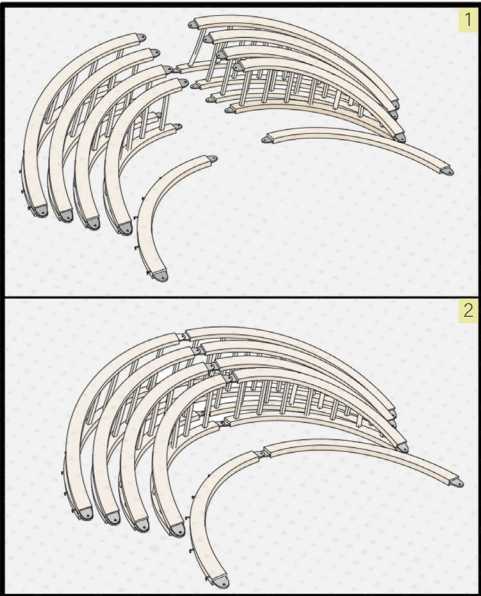
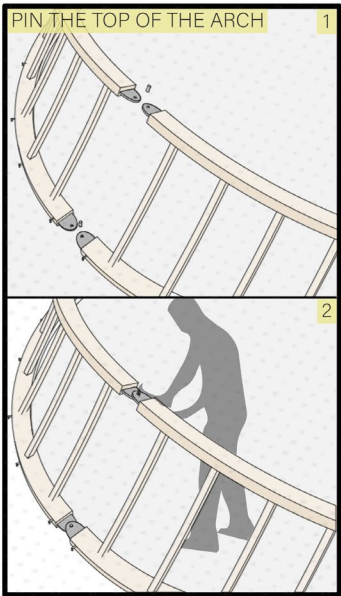
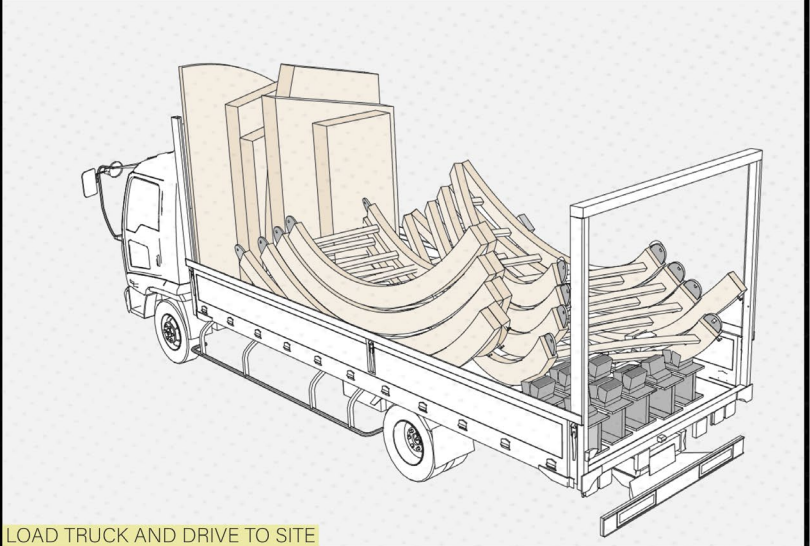
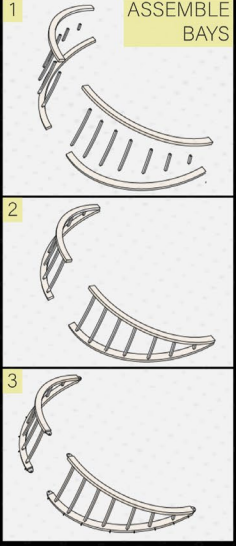
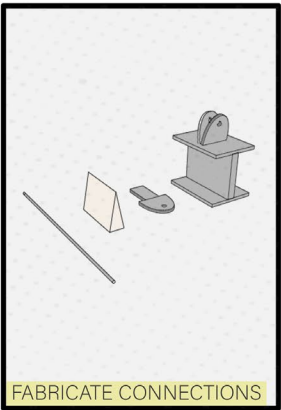
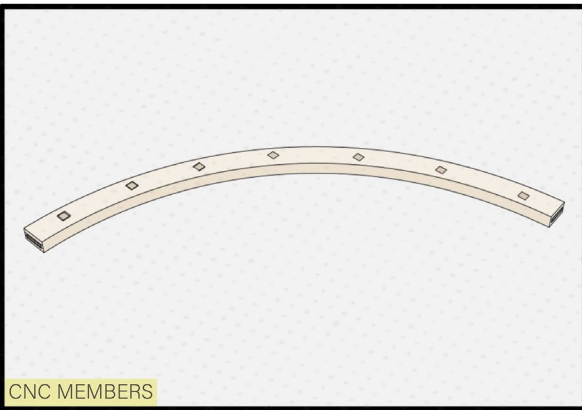
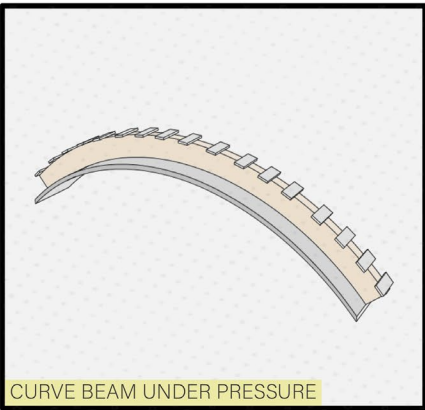
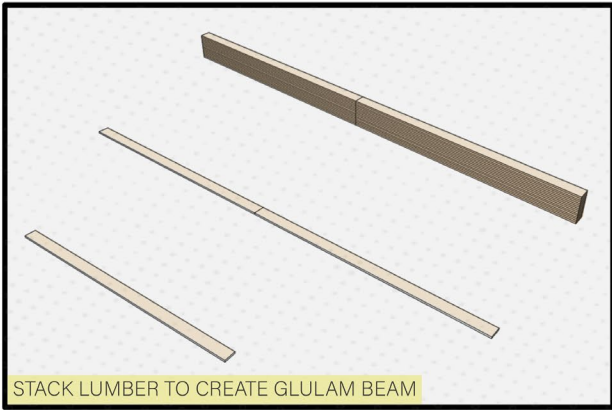
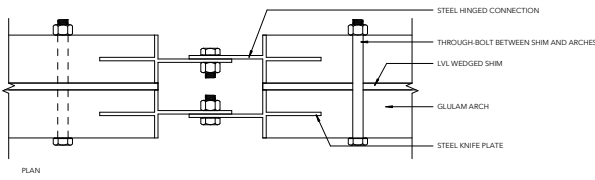
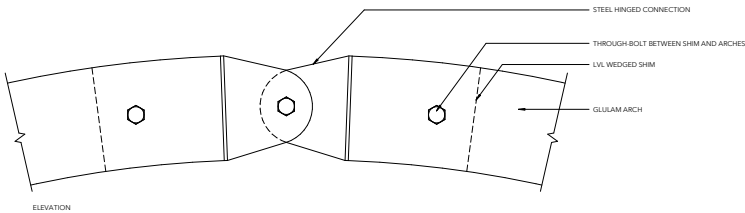
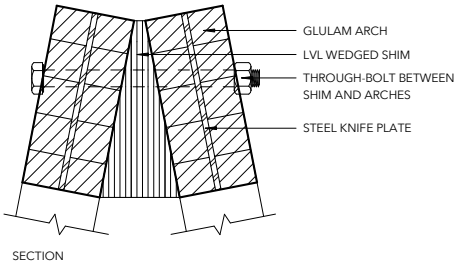
Eugene, Oregon
170 SQ ft
Fall 2021

This studio focused on timber solutions and transportable structures. Our final stage design is a series of tilted arches that lean on each other and work together to form a truss. Throughout the design we worked towards a lightweight structure that could fit on a truck bed. The main challenge we had to overcome was designing arch base connections that could secure the temporary structure.



Manufacturing to Transport

In addition to designing the structure, we were also tasked with planning the logistics of building and transporting the structure. The diagram bellow show the process of building the structure, transporting it, and assembly.

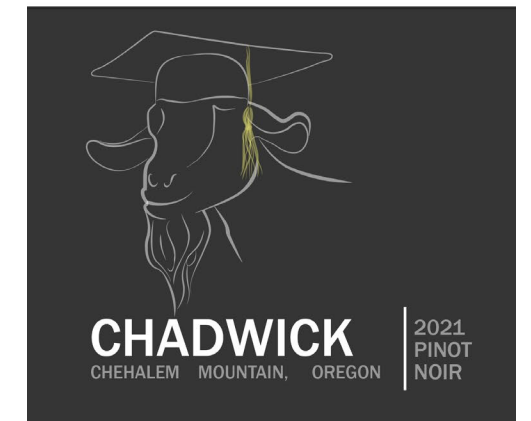


GRAPHIC

DESIGN

Goats to Grapes Wine Label

What do you get when you trade your pet goats in for a vineyard? Goats to Grapes farm is an experimental homemade wine made by the Chadwick Family. The different Wine labels are representative of different events happening in their life, including birthdays, graduations, and of course Covid.



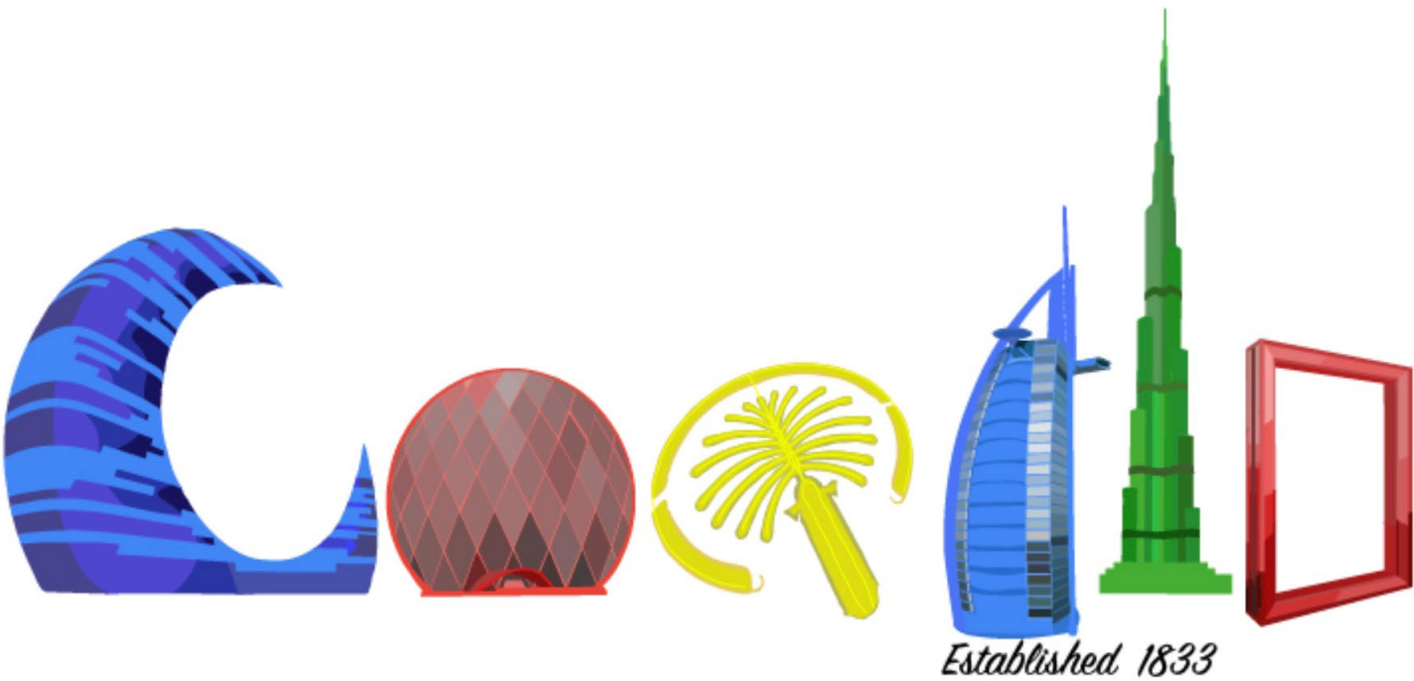
MOVIE POSTER PARODIES

Senior Year of High school I completed a series of 12 prints which feature me replacing famous movie characters on their own poster. Due to copyright laws I had to change the titles of these films resulting in hilarious parodies of my favorite movies



DOODLE FOR GOOGLE

Doodle for Google is an international design competition hosted by Google. It invites kids to create their own google logo, with th chance of it appearing on googles home page for a day. The theme in 2018 was “What Inspires me?” As an aspiring architect with an obsession of Dubai, I was inspired by their buildings to design this logo.



THANK YOU.