

JONATHAN SHEAR

Interior Design
Undergraduate Portfolio

University of Cincinnati 2023

CINCINNATI CHILDREN'S HOSPITAL

This Spring 2021 studio project asked that the cafeteria at Cincinnati Children's Hospital Burnet Campus - one of the nation's leading pediatric health institutions - be reimagined. The design was executed with three themes in mind: Engage, Excite, and Escape; notions used to curate a unique experience each visitor at this world-class hospital.

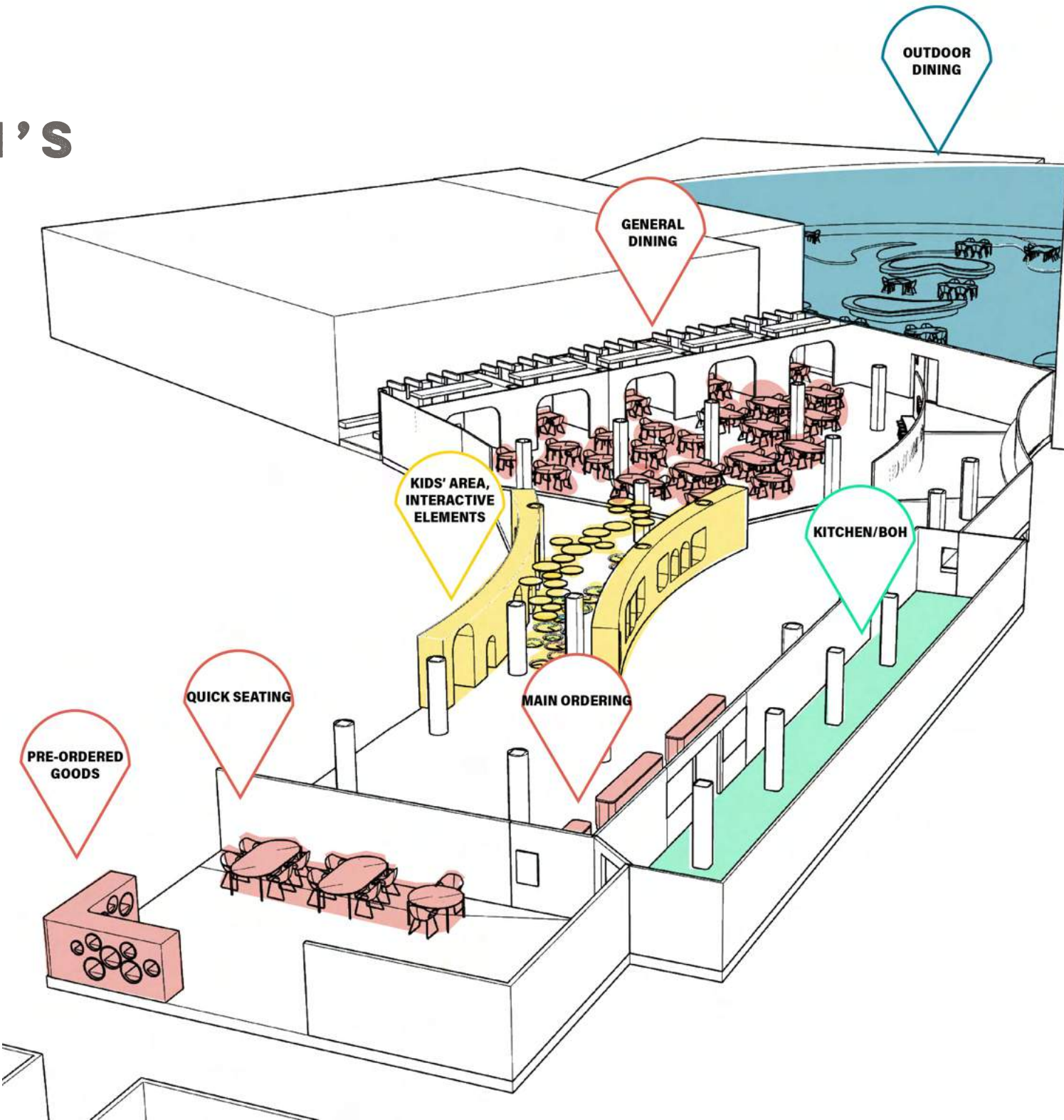
ENGAGE
FOR THE FAMILY TO SPEND
TIME WITH EACH OTHER
AFTER A HOSPITAL VISIT.



EXCITE
FOR THE CHILD WHO COULD
USE SOME PLAY TIME.



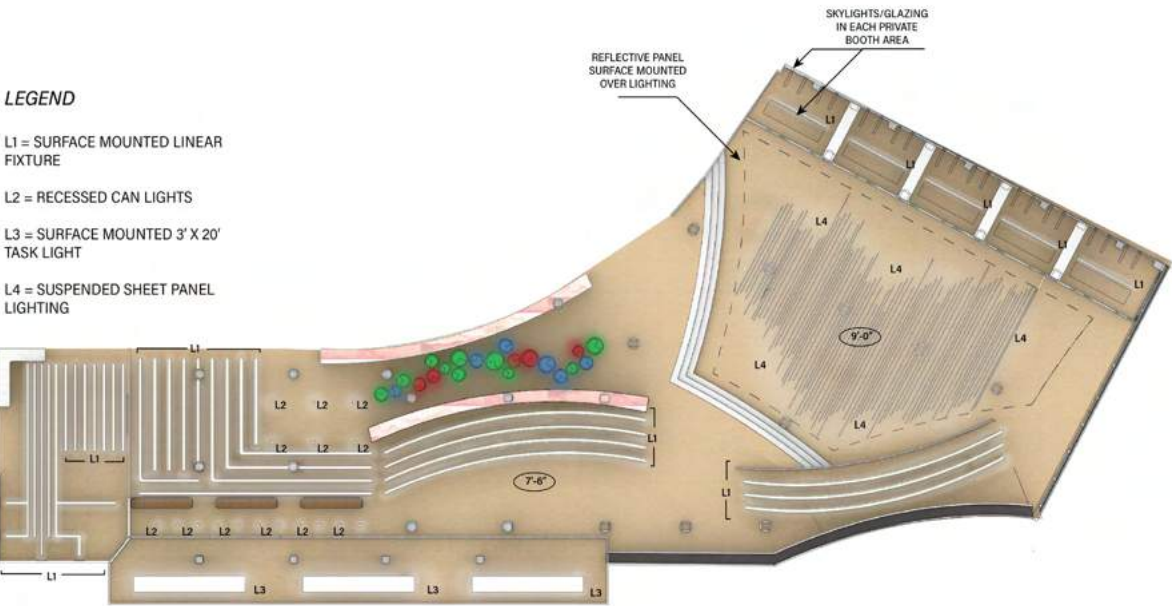
ESCAPE
FOR THE HOSPITAL WORKER
WHO NEEDS A BREAK FROM
THE CHAOS.



Reflected Ceiling Plan

LEGEND

- L1 = SURFACE MOUNTED LINEAR FIXTURE
- L2 = RECESSED CAN LIGHTS
- L3 = SURFACE MOUNTED 3' X 20' TASK LIGHT
- L4 = SUSPENDED SHEET PANEL LIGHTING



Light Oak LVT



Plaster @ Columns



Wallcovering @ Play Area

Floorplan



Private Seating



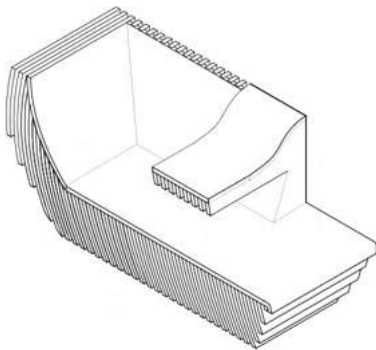
To-go cafe



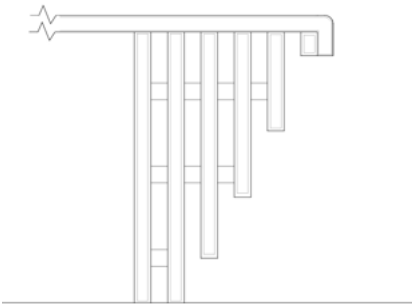
FORM COMPETITION

Formica’s FORM 2021 Competition posed the question of what furniture design of the future looks like. Taking the ever-changing nature of our world into consideration, this design aims to bring the comfort of home to any space, commercial or otherwise. Sit back and relax, or get to work.

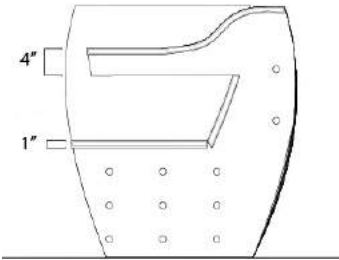
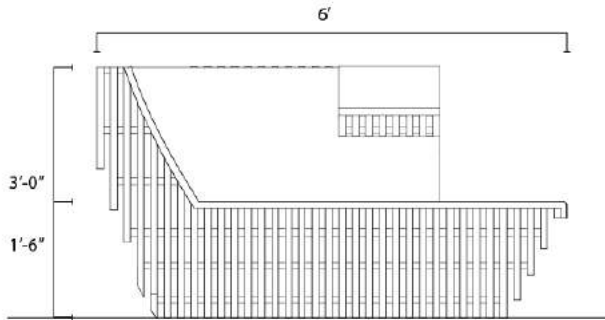
Axon



Detail



Sections

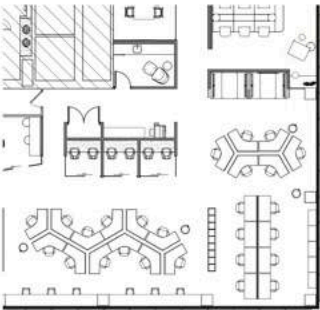


CORPORATE INTERIOR

This commercial project involved renovating two floors of a Denver office building. Work on this project included finish palette selection, furniture specifications, creating Design Discovery and Development presentations, tagging furniture in Revit, and applying materials to furniture in Revit, rendered in Enscape.



OVERALL DESIGN | Open Office



ENLARGED FLOOR PLAN



General Carpet
Interface
Urban Retreat - Granite



Workstations
See finish swatches



Workstation Finish
AIS
Aimtoo Savatre



Workstation Metal
Finish
White



Tackable Panel
Steelcase
Plain Jane - Blizzard



Task Chair
Steelcase
Think



Task Chair Upholstery
Steelcase
New Black - Harley



Booth Wallcovering
Astek
Twiggy - Almond

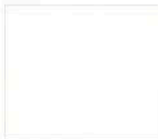


Table Surface
White



Booth Upholstery
Architex
Hush - Cognac



Panel Upholstery
Filzfelt
Eis 551



Stool Upholstery
DesignTex
Schism - 702



Stool Upholstery
DesignTex
Schism - 403



Stool
Vicarbe
Maarten Bar Stool



Skybar Surface & Edge
Wilsonart
Snow White / Europly



This project involved renovating an existing small office suite to fit the needs of an expanding business. Scope included demolition and new construction.

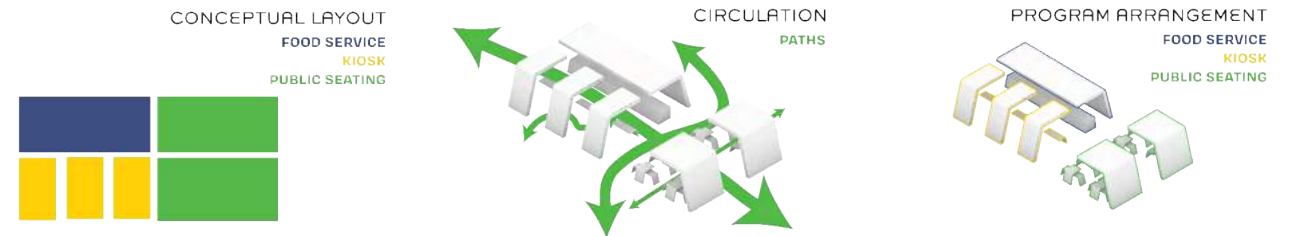
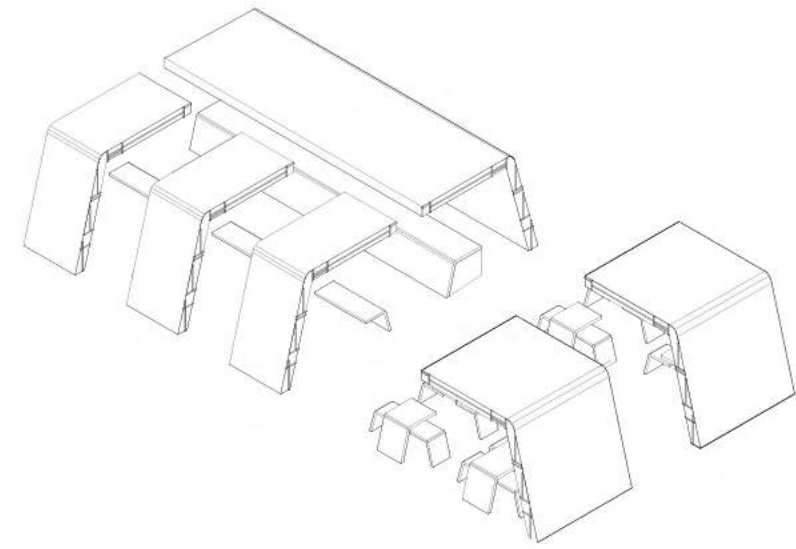
[illegible]

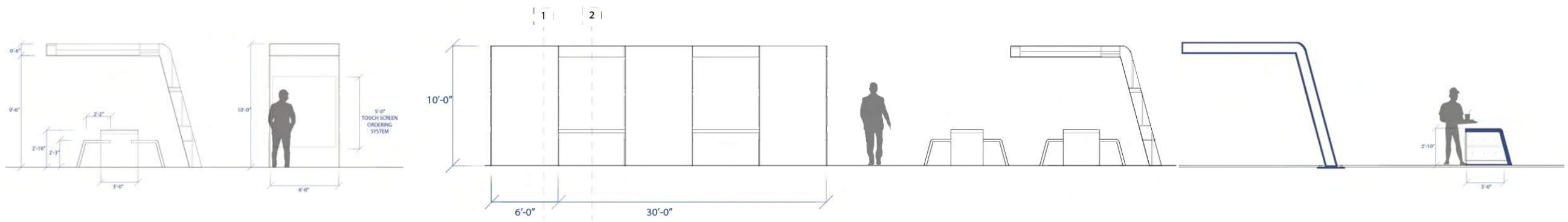
OCULUS PIAZZA

Experimenting with the spatial potentials of culturally or otherwise inspired patterns. Use the pattern as a device for spatial organization and for designing a multifunctional system. Create a piazza space for travelers to pass through and experience.

Primary Inspiration: Bahaus School / Modernism

Site: Oculus at the World Trade Center Station, Manhattan



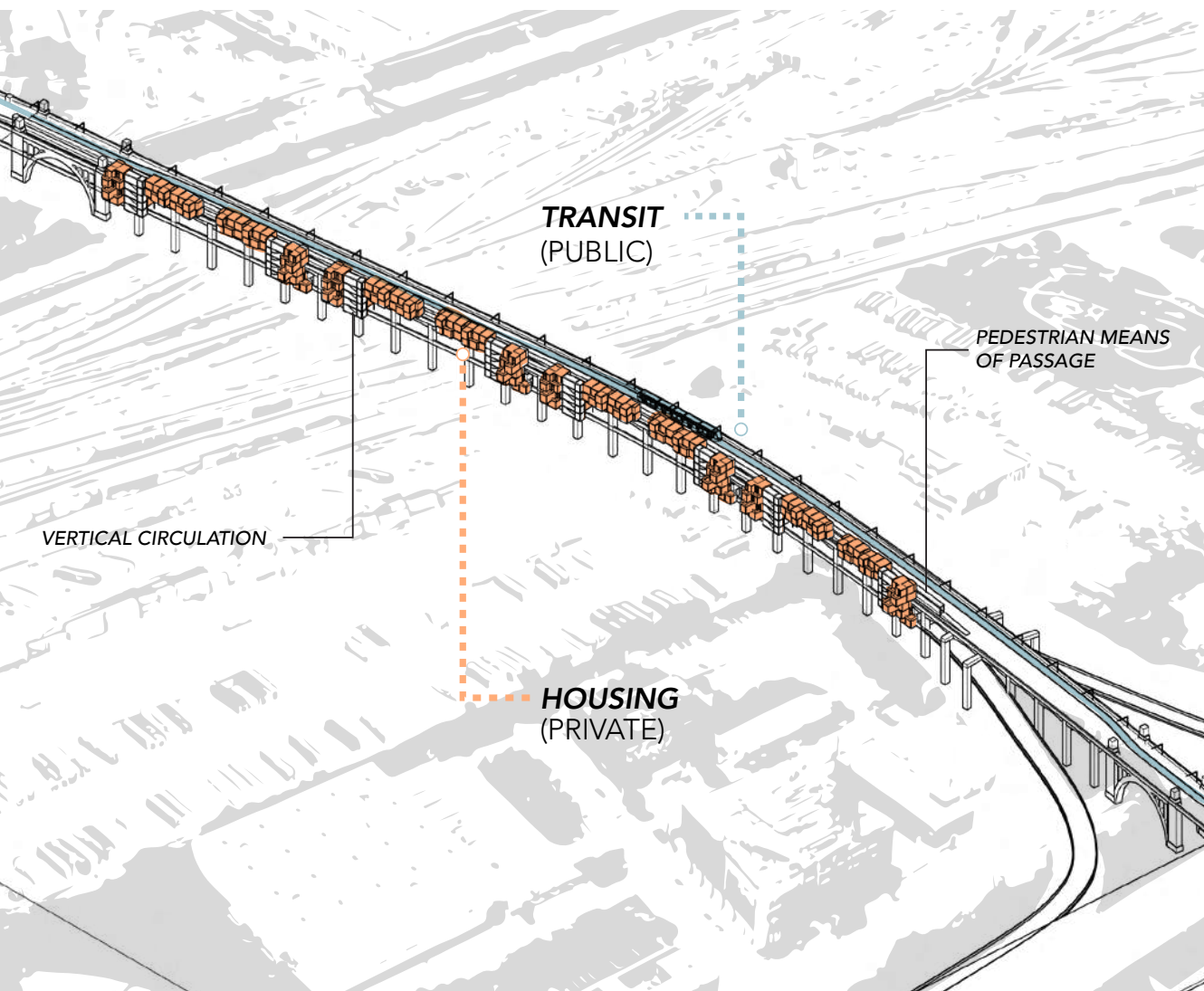


CAPSTONE

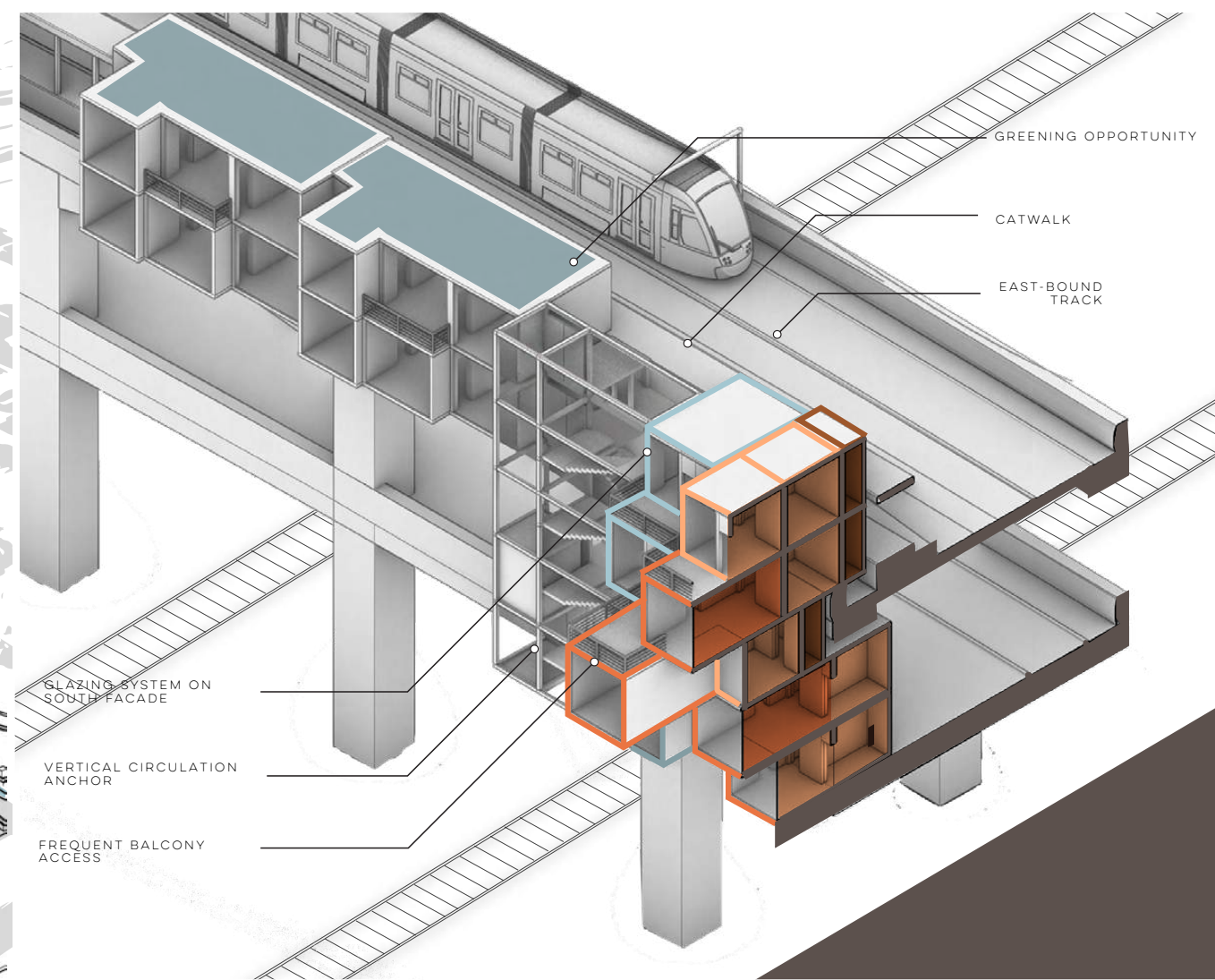
Stemming from studies of publicness, urban interiority, and adaptive reuse, this senior capstone project envisions the transformation of dying infrastructure in Cincinnati. This project occupies the Western Hills Viaduct, a major bridge linking Cincinnati's west side with downtown and uptown. As the bridge reaches the end of its useful life, this project aims to bring occupancy and vibrancy to a car-oriented structure, provide a unique affordable housing solution, as well as connection to Cincinnati's budding passenger street car service in a pedestrian-oriented design.

Site: Western Hills Viaduct, Cincinnati, Ohio





The over-all scheme offers a pedestrian and transit oriented linkage between downtown and western parts of Hamilton County, as well as a system of modular, prefabricated housing units anchored to the bridge structure itself.



Axonometric section & plan showing relationships between multi-level housing, pedestrian walkway, and streetcar route. This five-level aggregate of 9 one-bedroom units is repeated down the length of the bridge eight times, for a total of 72 units.

AERIAL LOOKING
WEST | **UPPER DECK**



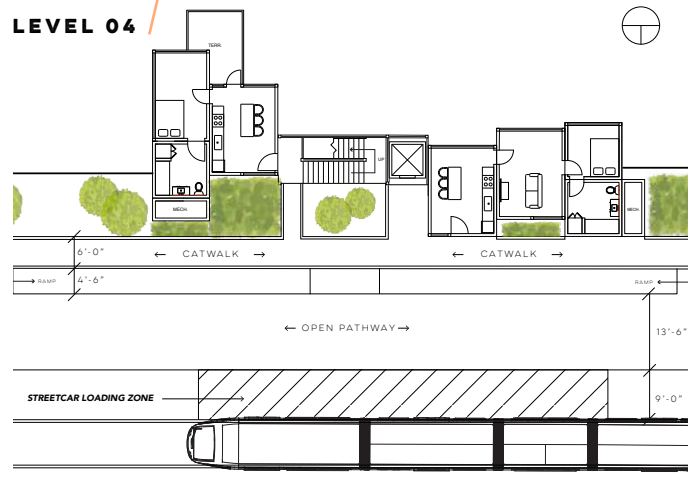
LOOKING EAST |
LOWER DECK



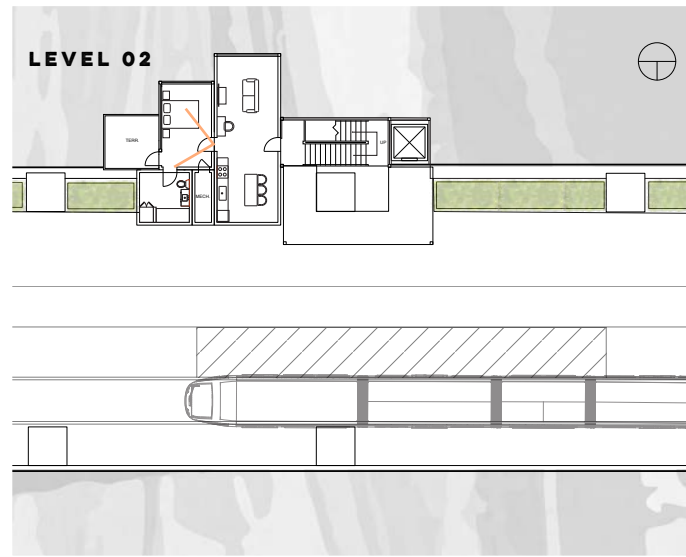
LEVEL 05



LEVEL 04



LEVEL 02



THANK YOU

shearjohn@yahoo.com

440.665.1309