

PORTFOLIO
XIANJUN CAO

SELECTED WORK
2023



EDUCATION

Bachelor of Technology | Architecture Technology Expected in 06/2024
New York City College of Technology , Brooklyn, NY

- Dean's List [Spring and 2022]
- Dean's List [Fall and 2022]
- GPA:3.88

Associate of Applied Science | Architecture Technology 12/2021
Queensborough Community College, Queens, NY

- Dean's List [Spring and 2021]
- Dean's List [Fall and 2022]
- GPA 3.77

WORK HISTORY

MTA LIRR SPECIAL PROJECT/ESA 07/2022 to 09/2022
Internship Project Coordinator | New York, NY

- Organizing prebill, tracking, and submittal log.
- Visiting field and represent reports.
- Communication and interpersonal skills capable of maintaining strong relationships.
- Identified pertinent information to share with external shareholders utilizing most effective platform.

U-BUILD CONSTRUCTION LLC 09/2017 to 07/2019
Construction Manager | New York, NY

- Overseeing and directing construction projects from conception to completion.
- Reviewing the project in-depth to schedule deliverables and estimate costs.
- Overseeing all onsite and offsite constructions to monitor compliance with building and safety regulations.

SKILLS

- AutoCAD
- Revit
- Rhino
- 3ds Max
- Lumion
- Microsoft Software: Excel Word PowerPoint
- Adobe: Illustrator Photoshop Indesign

LANGUAGE

Chinese-Cantonese, Mandarin
English

CERTIFICATIONS

- Certificate of Fitness for Fire Guard for Torch operations(FNDY)
- Certificate of Fitness for Torch use of Flammable Gases(FNDY)
- Certificate of 30 hours OSHA
- Certificate 4 hour flagging training
- Certificate 4 hour supporting scaffold
- Certificate of bartender

HOBBY

- Video Game
- Fitness
- Travel

CONTENT

01	WEDDING SEASON	04-09
02	1 JOIN STREET BUILDING	10-17
03	STRUCTURE CONNECTION	18-23
04	EXTRA RENDERING WORK	24-27



WEDDING SEASON

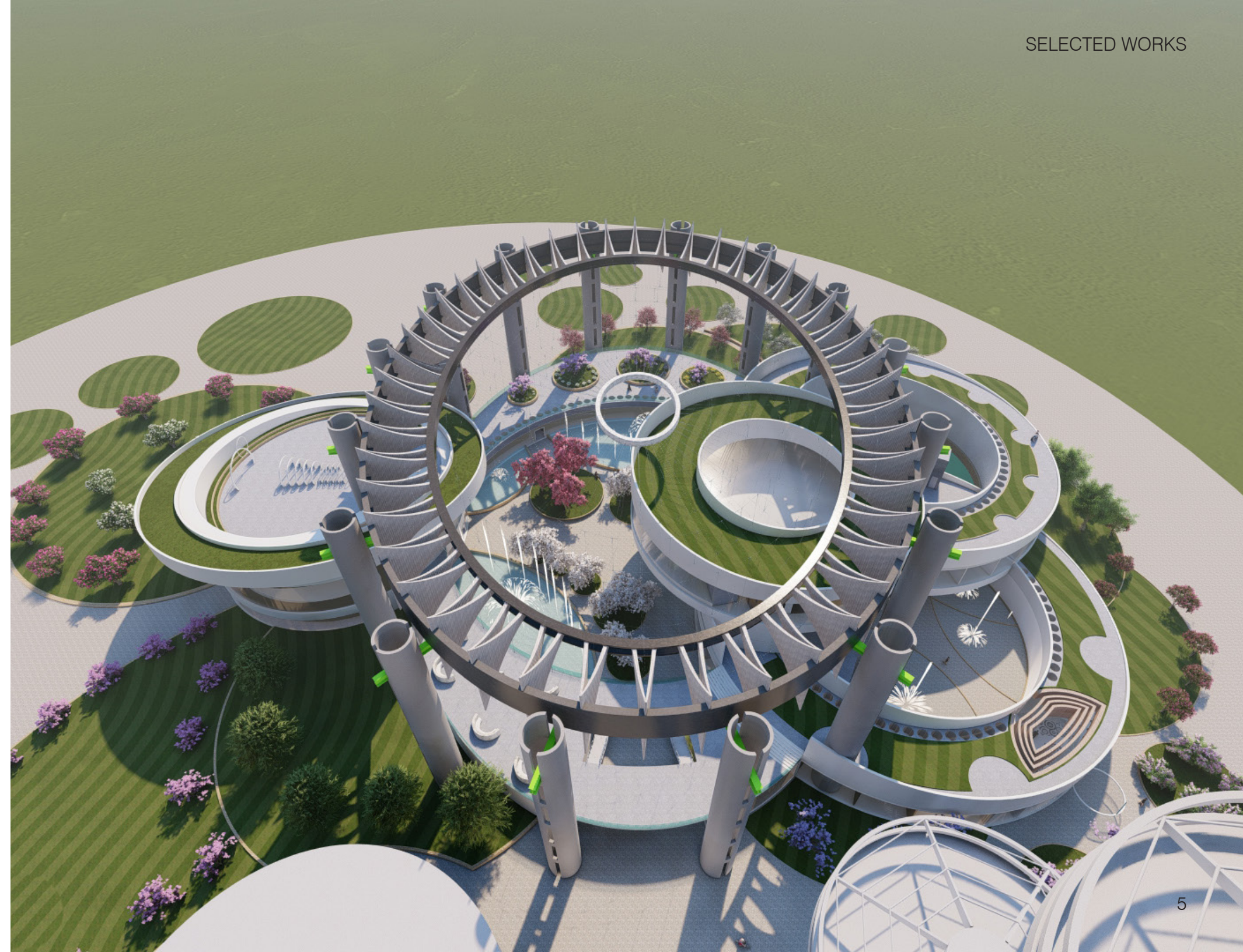
LOCATION: CORONA-PARK, NEWYORK

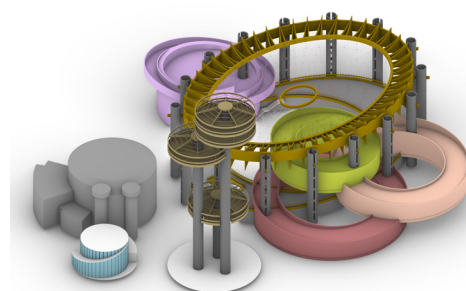
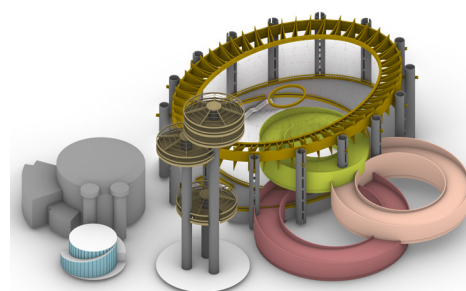
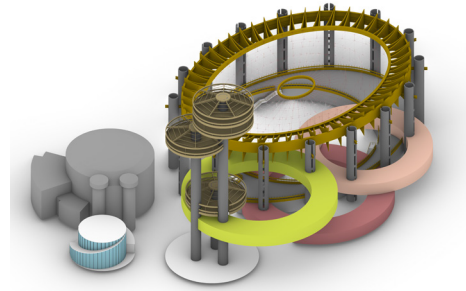
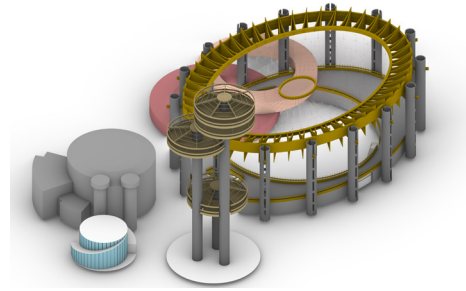
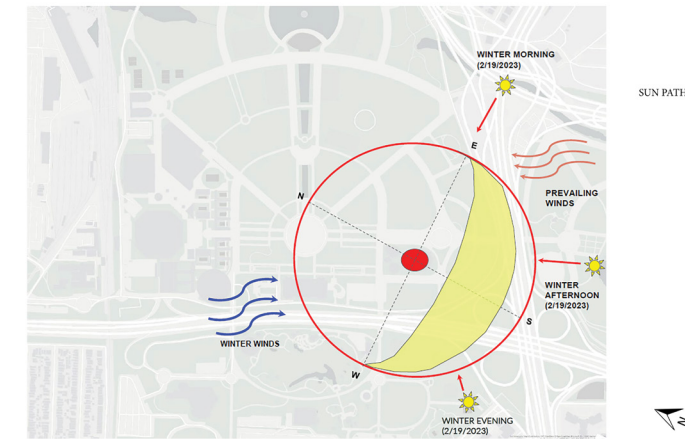
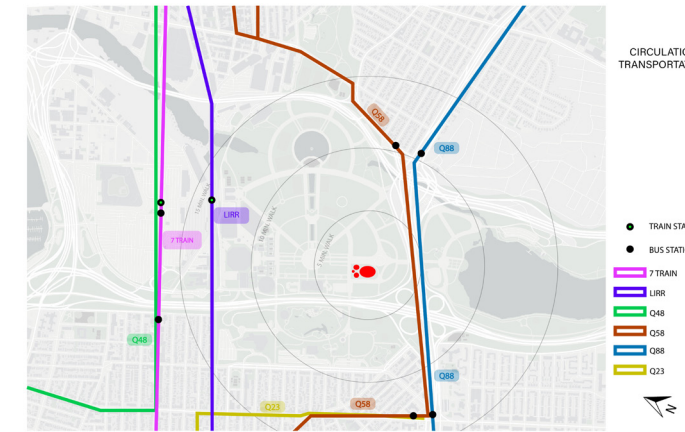
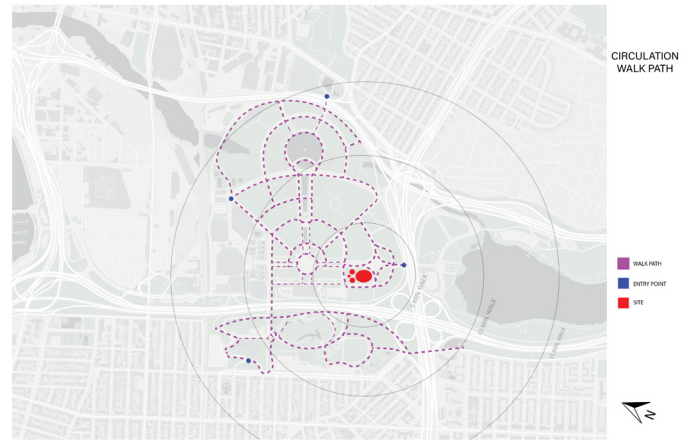
YEAR: 2023

TYPE: ADAPTIVE REUSE

STATUS: COMPLETE

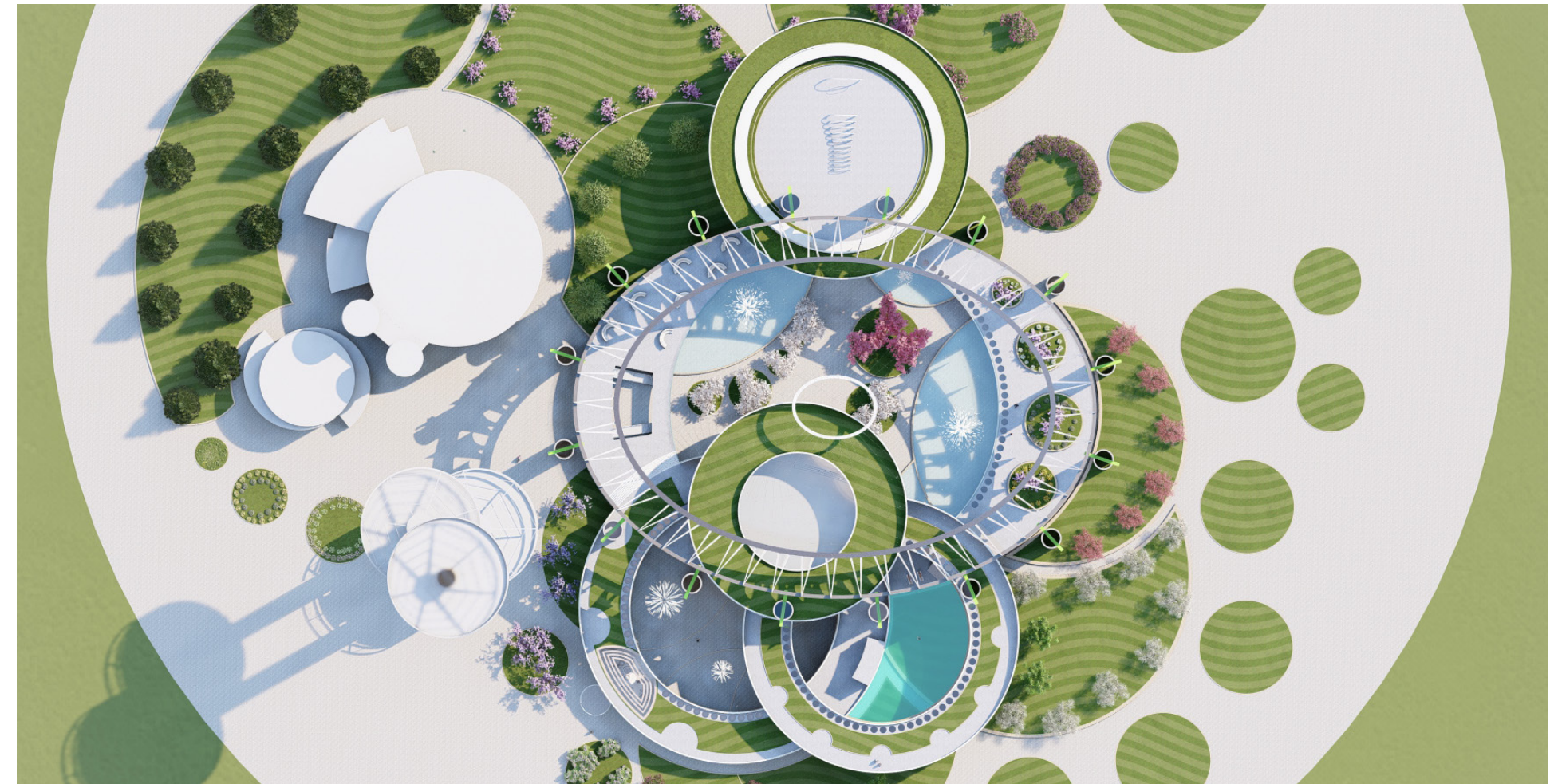
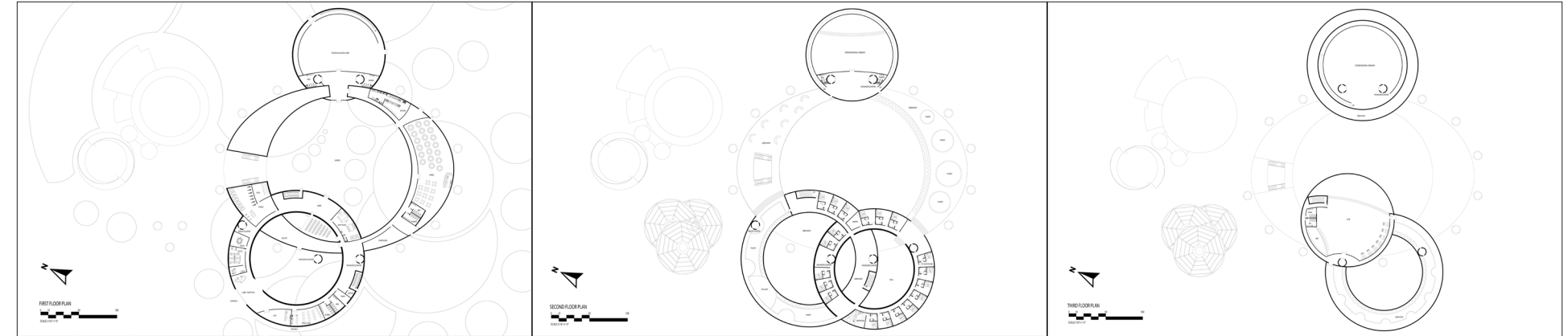
THE CONCEPT OF THE BUILDING ORIGINATED FROM ME, WHO IS ABOUT TO ENTER INTO MARRIAGE, SEEKING A WEDDING VENUE THAT IS SUITABLE FOR ME AND EVERYONE. SO I USED THE WEDDING RING AS MY DESIGN CONCEPT AND CREATED THE WEDDING SEASON HOTEL. EACH RACE HAS DIFFERENT WEDDING CEREMONIES, BUT EVERY COUPLE HAS A WEDDING RING AS A SYMBOL OF LOVE AND COMMITMENT. THIS IS ALSO TO ACCOMMODATE WEDDINGS OF DIFFERENT RACES AND BELIEFS.

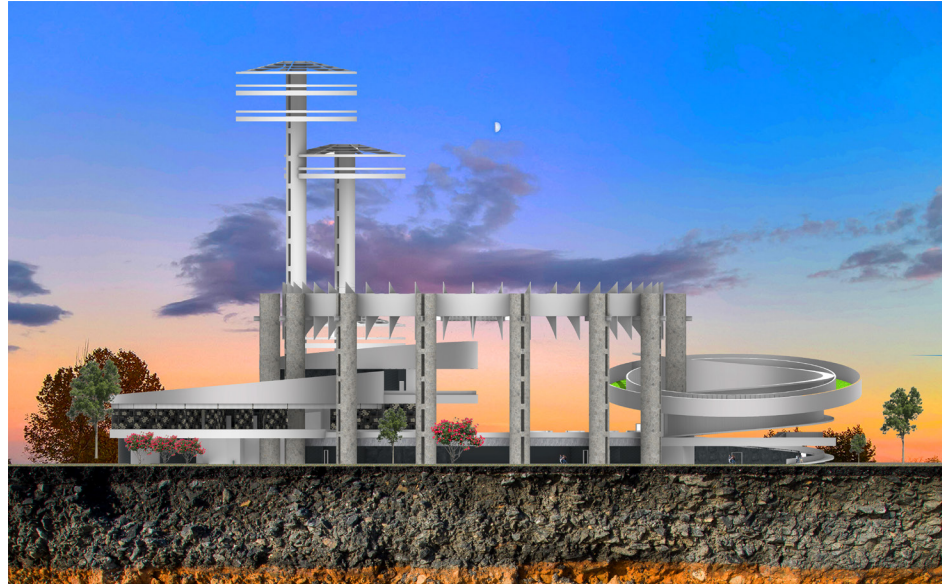




MASSING PROCESS

THE FINAL LOCATION AND FORM OF THE MASSING ARE DETERMINED BASED ON THE REQUIREMENTS OF CIRCULATION, LIGHTING, AND URBAN SCENERY. THESE FACTORS PLAY A CRUCIAL ROLE IN SHAPING THE DESIGN TO CREATE A HARMONIOUS INTEGRATION WITH THE SURROUNDING ENVIRONMENT.

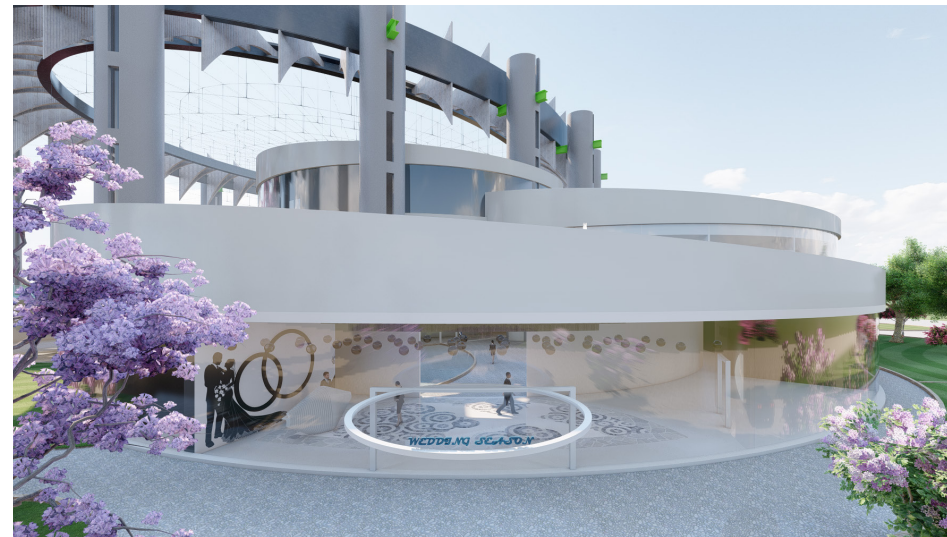




WEDDING CEREMONY



LOBBY



HOTEL



GUEST ROOM

02

1 JOHN STREET BUILDING

LOCATION: 1 JOHN STREET

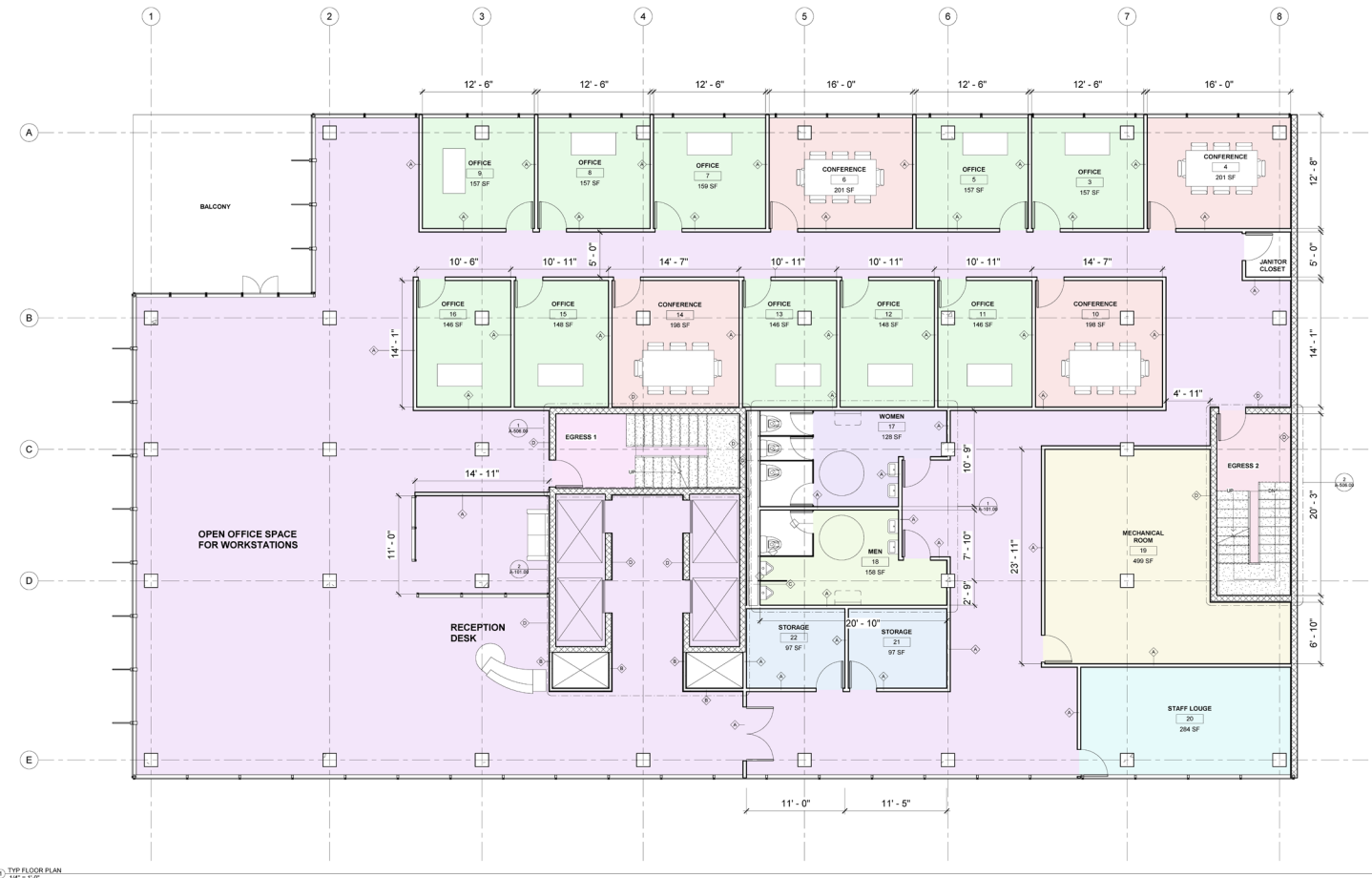
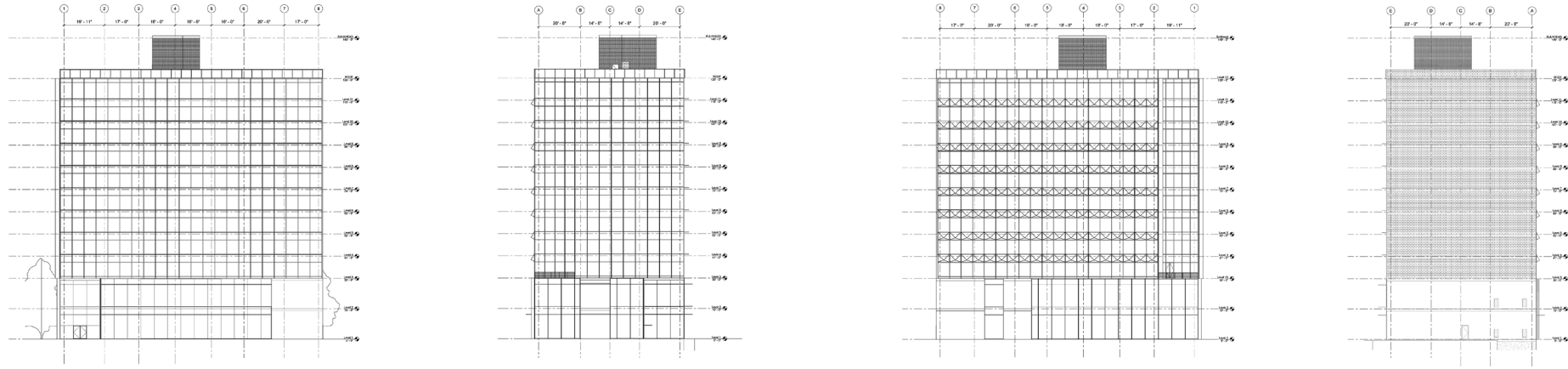
YEAR: 2023

TYPE: COMMERCIAL&OFFICE

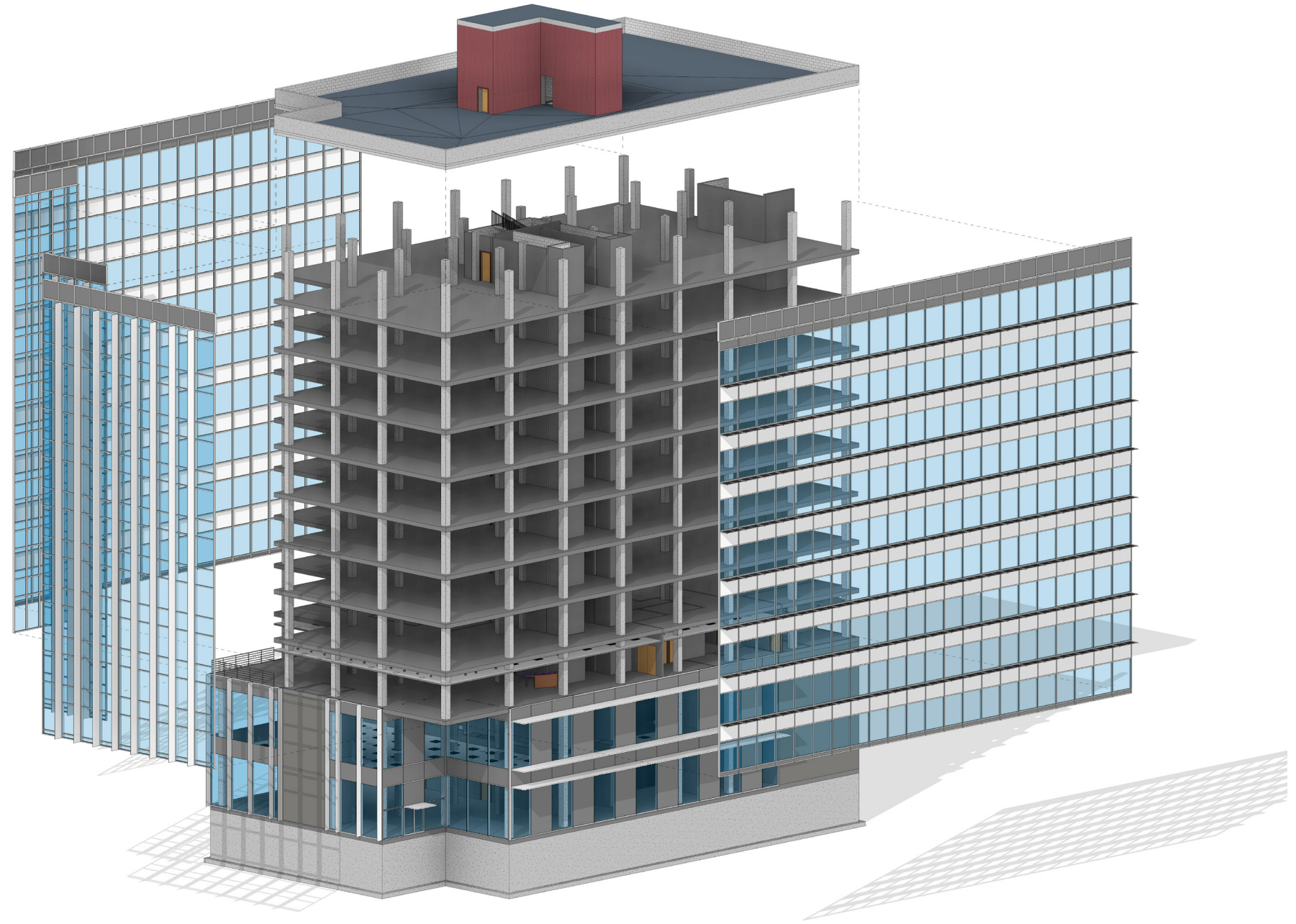
STATUS: COMPLETE

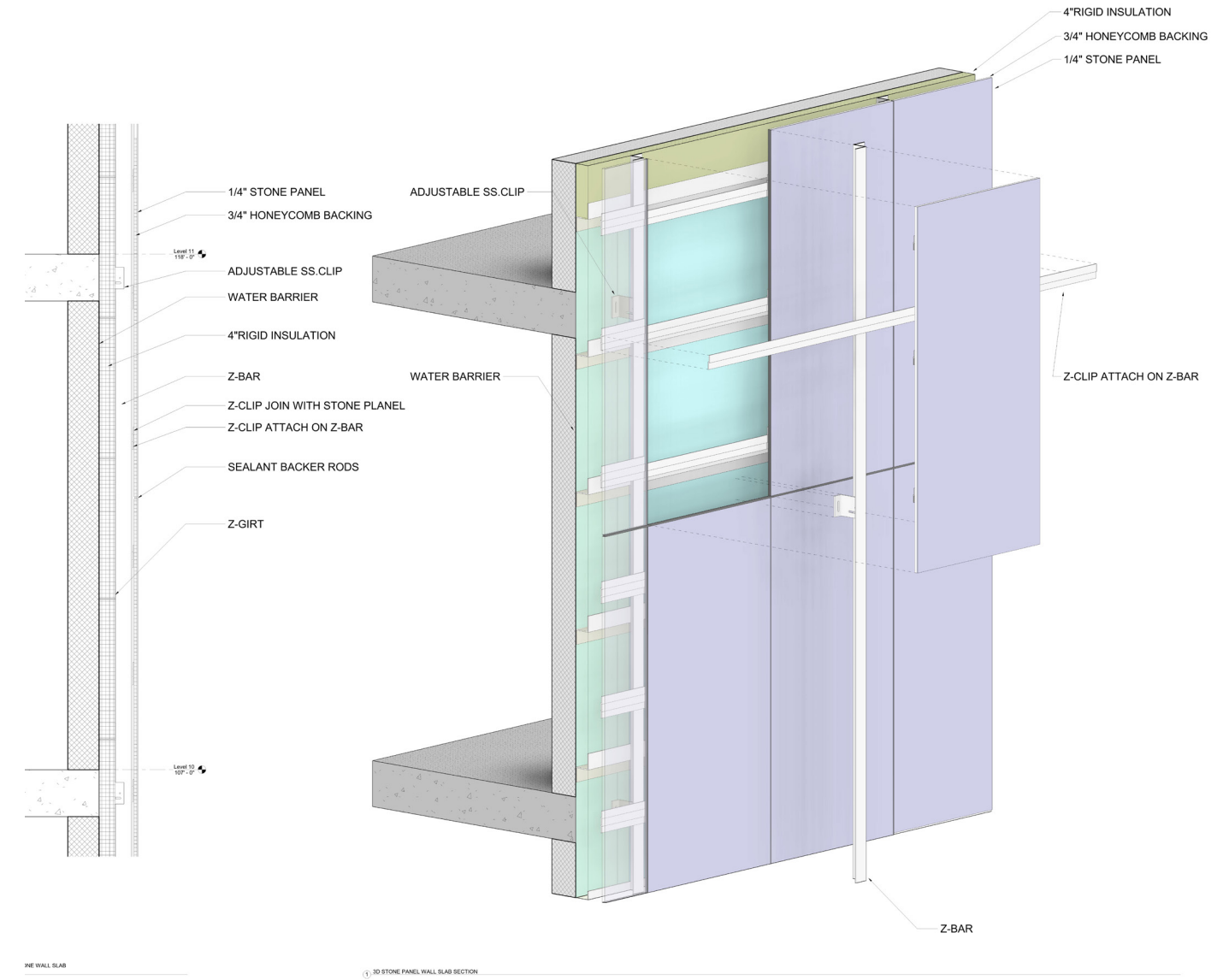
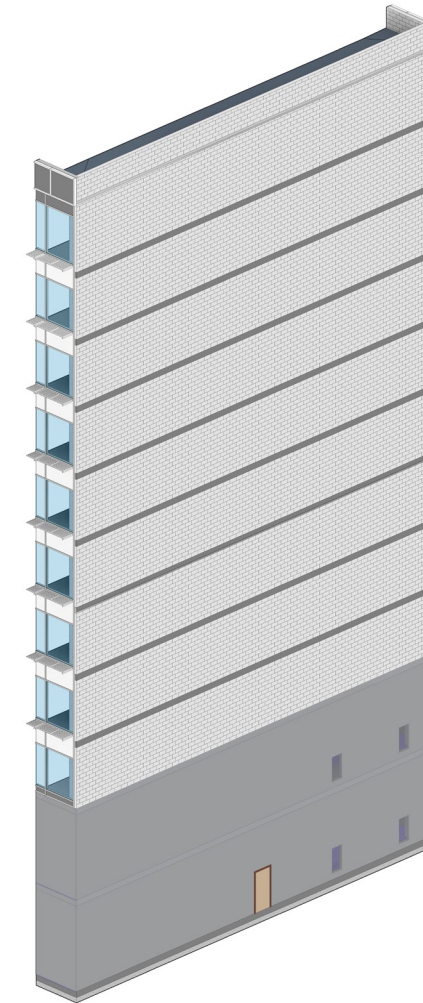
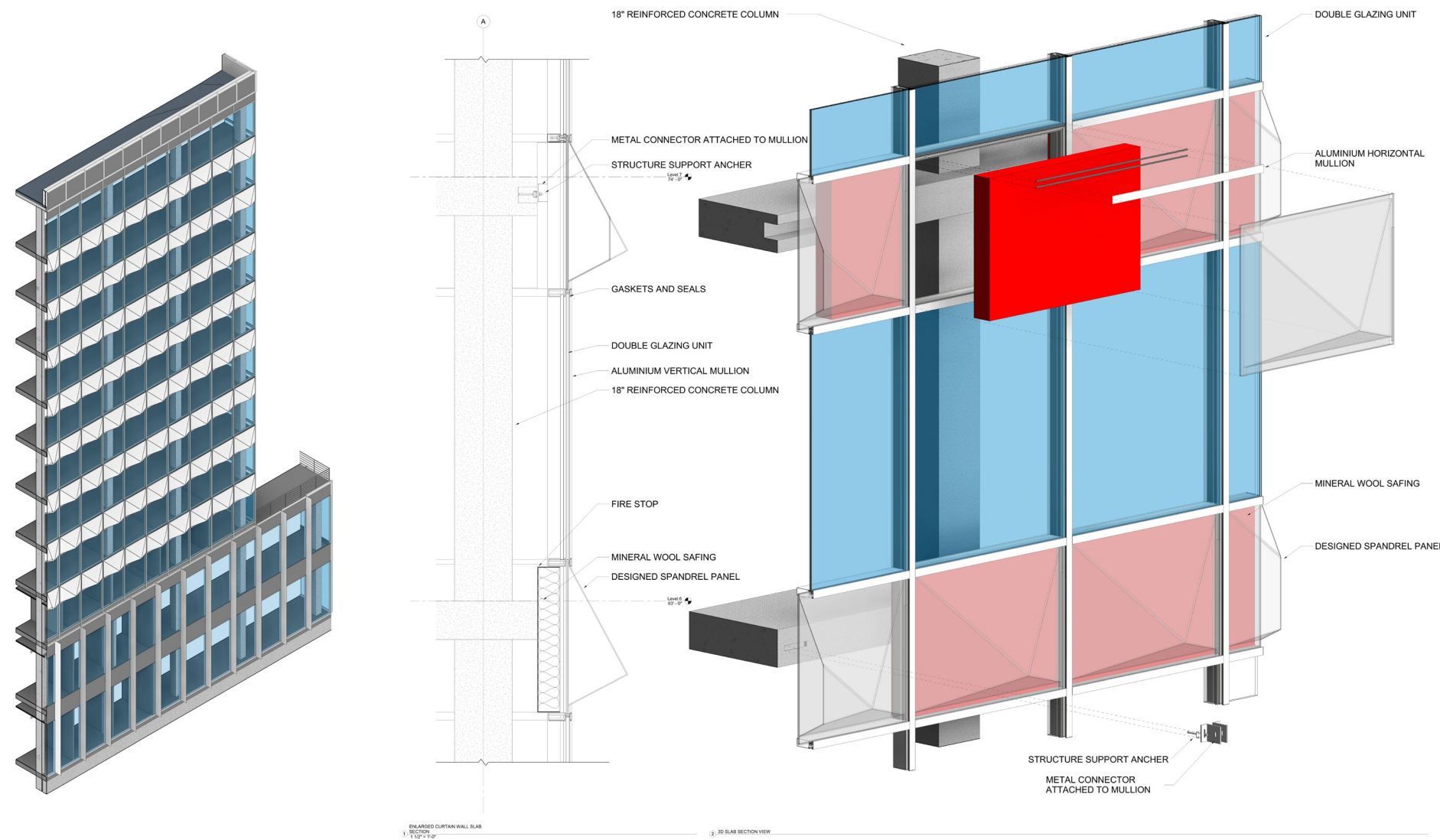
THE BUILDING CONSISTS OF TWO RECTANGULAR PRISMS WITH TWO MISSING CORNERS, REPRESENTING THE ENTRANCE AND THE BALCONY. THE OVERALL DESIGN OF THE BUILDING INCORPORATES CURTAIN WALLS TO ACCENTUATE ITS TRANSPARENCY, ALLOWING OCCUPANTS TO ENJOY THE URBAN SCENERY WHILE BEING ENGAGED IN BUSY WORK



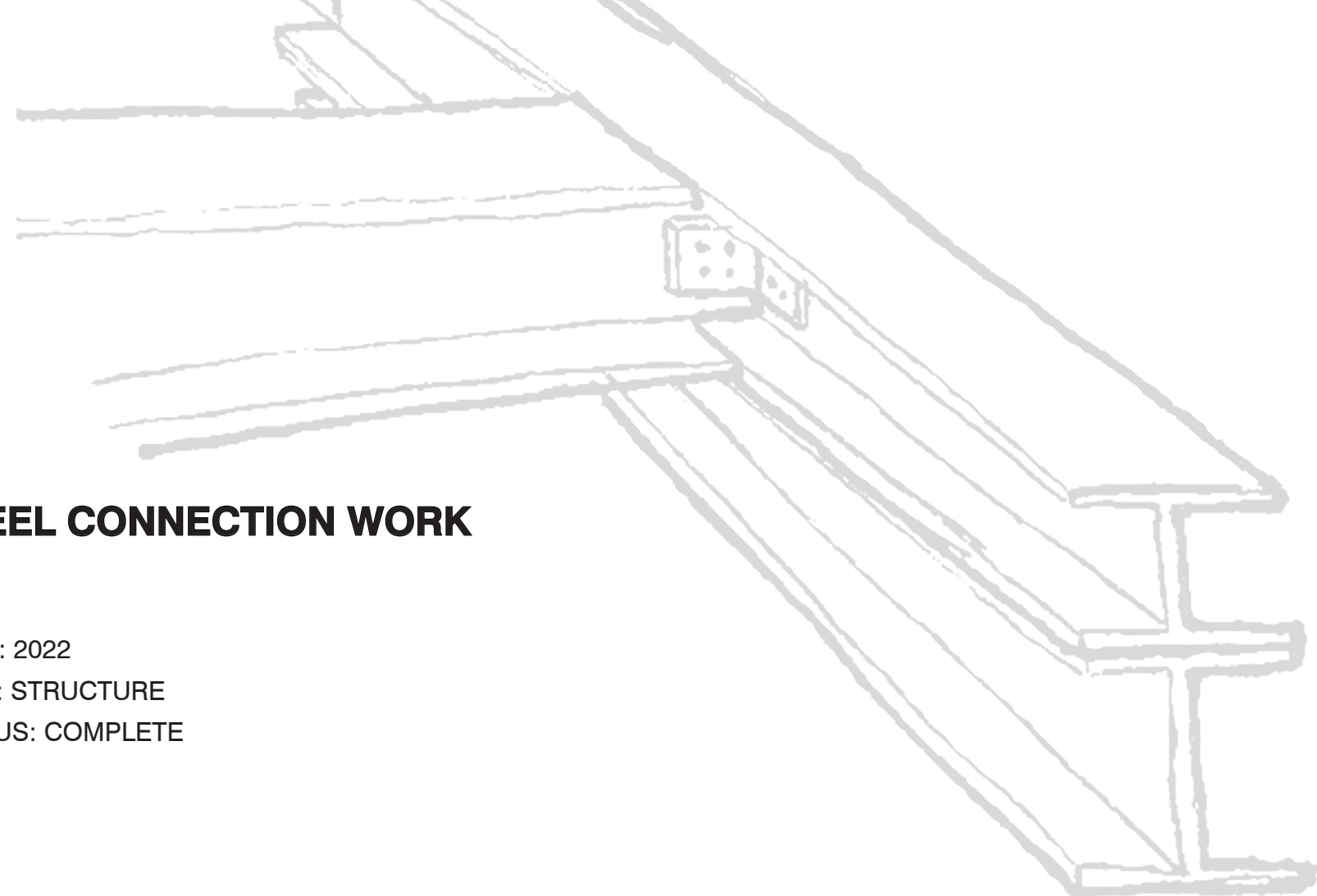


① TOP FLOOR PLAN
1/4" = 1'-0"





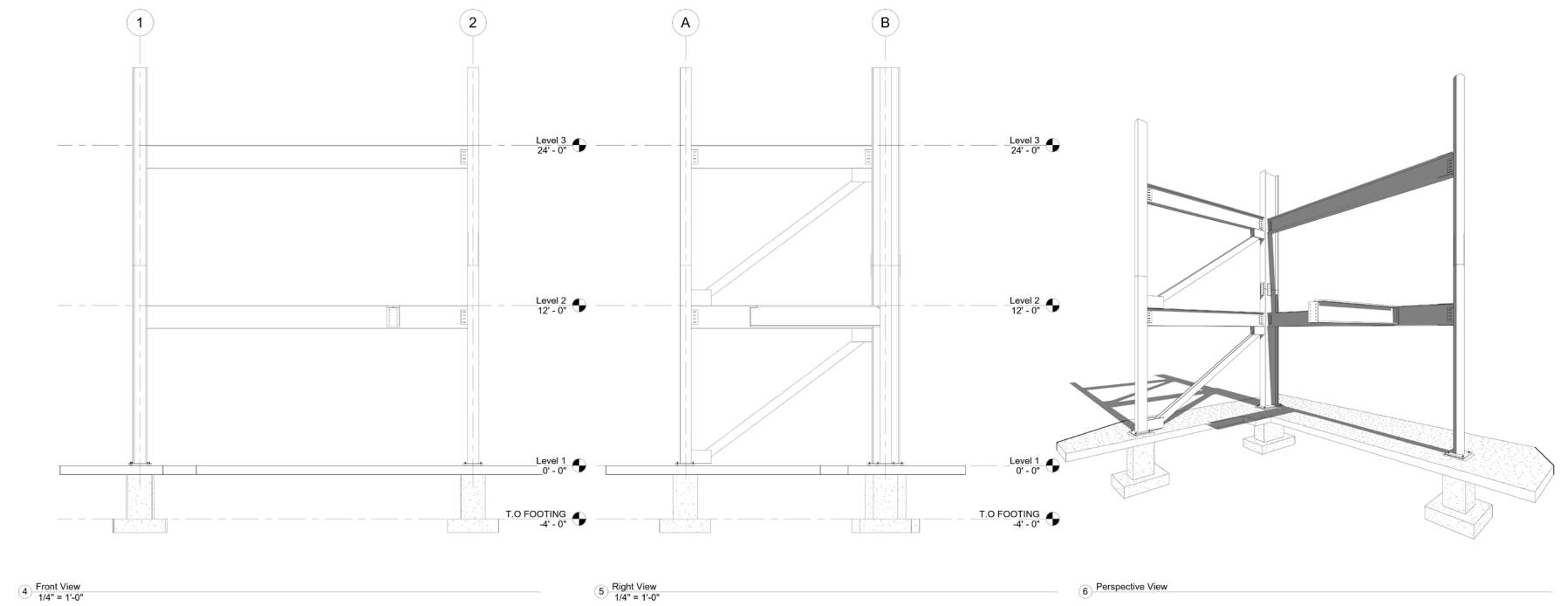
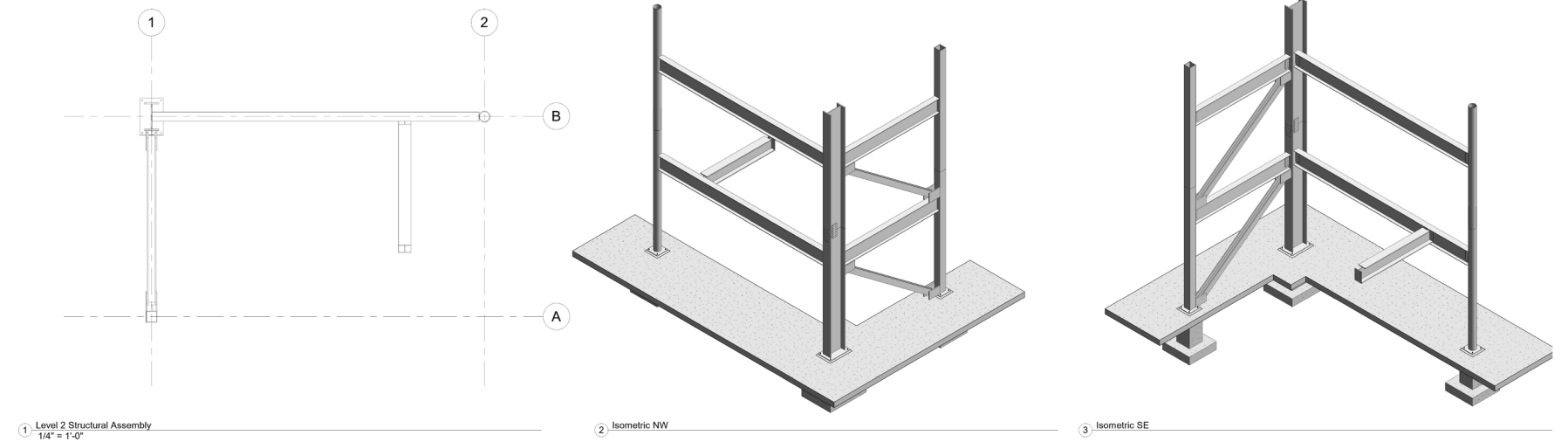
03

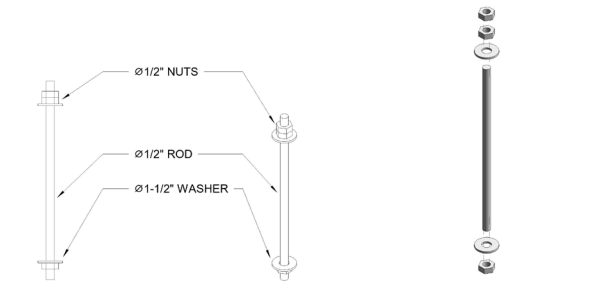


STEEL CONNECTION WORK

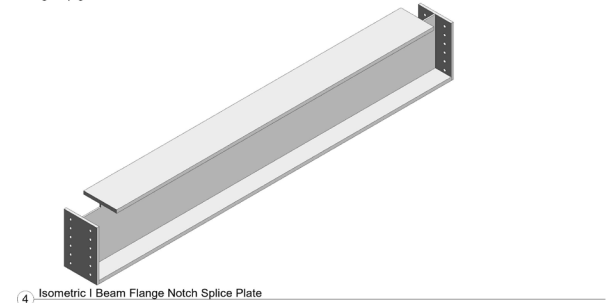
YEAR: 2022
 TYPE: STRUCTURE
 STATUS: COMPLETE

THE STEEL CONNECTION PROJECT INCLUDES I BEAM COLUMNS, HSS STEEL PIPE COLUMNS, AND HSS SQUARE HOLLOW COLUMNS. I REPRESENT THEIR CONNECTIONS USING DETAILS AND 3DS.

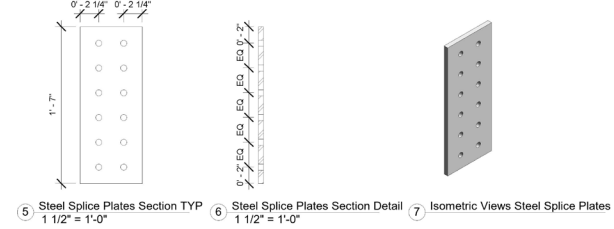




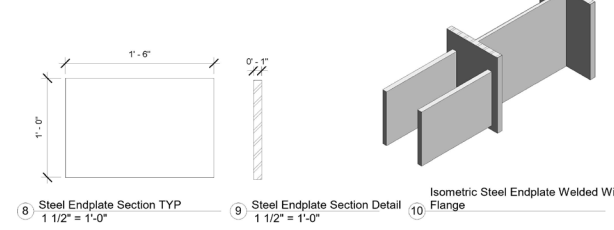
1 Hold-Down Section TYP
3" = 1'-0"
2 Isometric Views Hold-Down
3 Exploded Isometric Views@Hold-Down



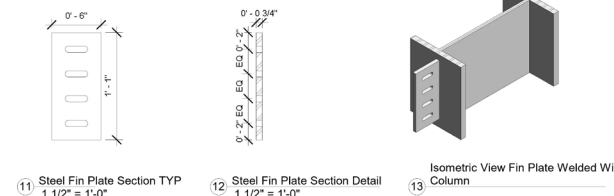
4 Isometric I Beam Flange Notch Splice Plate



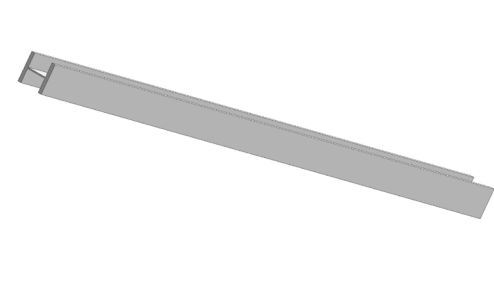
5 Steel Splice Plates Section TYP
1 1/2" = 1'-0"
6 Steel Splice Plates Section Detail
1 1/2" = 1'-0"
7 Isometric Views Steel Splice Plates



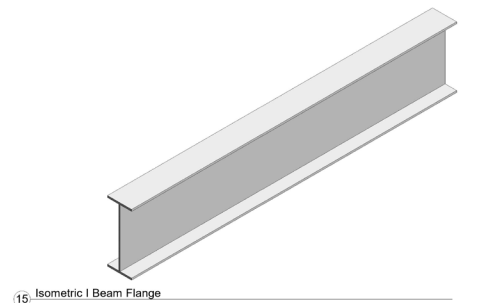
8 Steel Endplate Section TYP
1 1/2" = 1'-0"
9 Steel Endplate Section Detail
1 1/2" = 1'-0"
10 Isometric Steel Endplate Welded With Flange



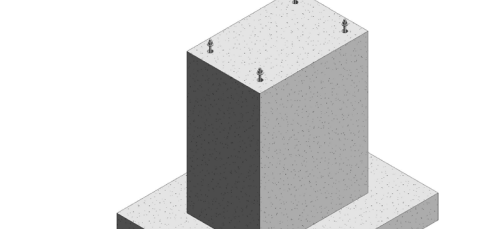
11 Steel Fin Plate Section TYP
1 1/2" = 1'-0"
12 Steel Fin Plate Section Detail
1 1/2" = 1'-0"
13 Isometric View Fin Plate Welded With Steel Column



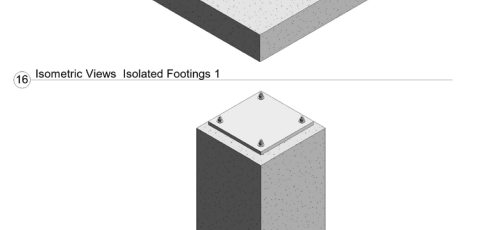
14 Isometric View Bracing



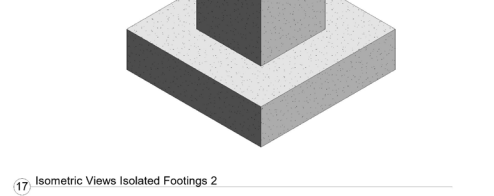
15 Isometric I Beam Flange



16 Isometric Views Isolated Footings 1



17 Isometric Views Isolated Footings 2



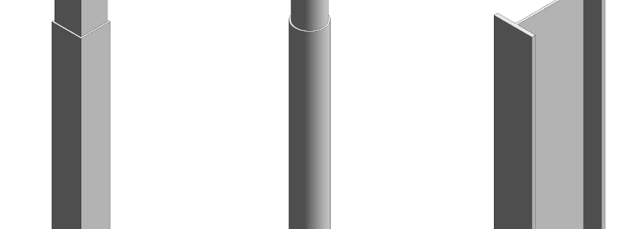
18 Isometric View HSS Square Hollow Columns



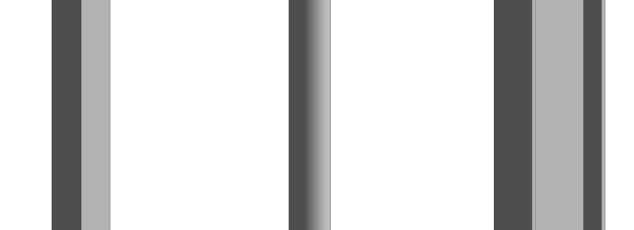
19 Isometric View HSS Steel Pipe Columns



20 Isometric views I Beam Column



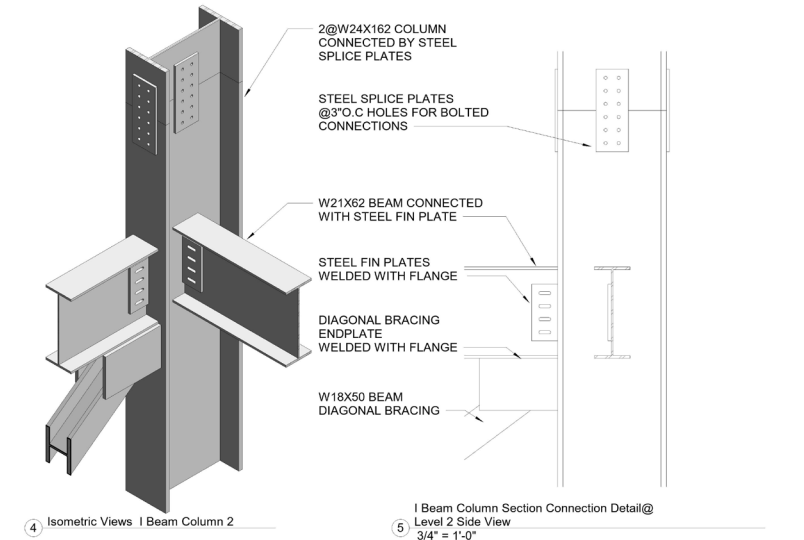
21 Isometric Views HSS Square Hollow Column With Baseplate



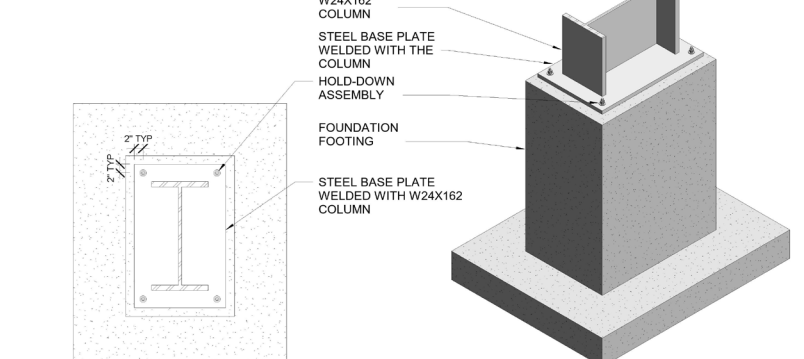
22 Isometric View HSS Steel Pipe Columns With Baseplate



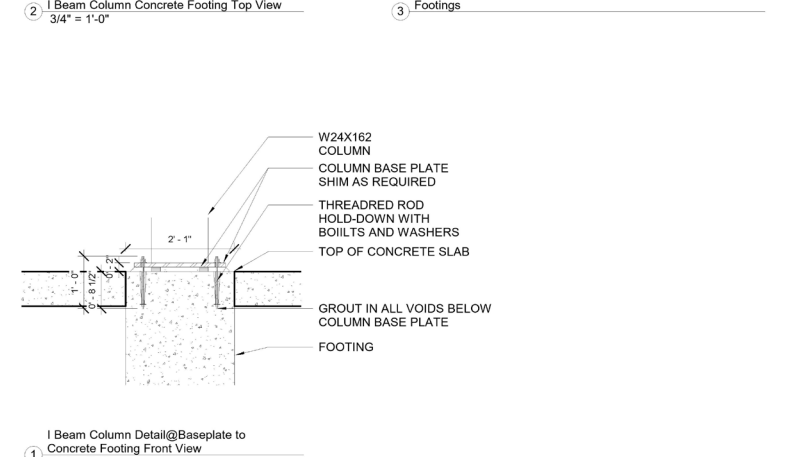
23 Isometric views I Beam Column With Baseplate



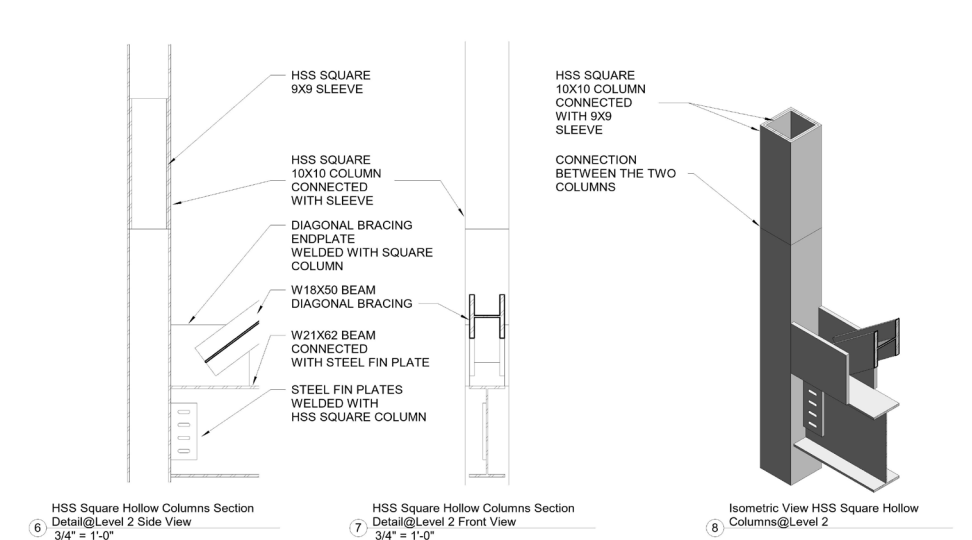
4 Isometric Views I Beam Column 2



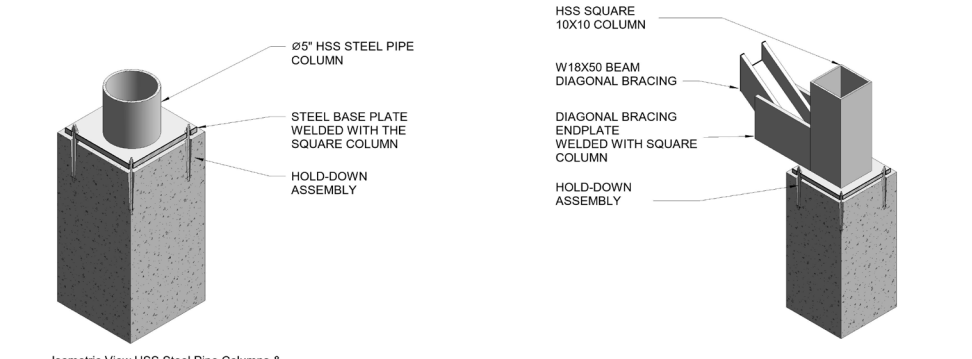
2 Isometric Views I Beam Column Concrete Footing Top View
3/4" = 1'-0"
3 Isometric views I Beam Column & Isolated Footings



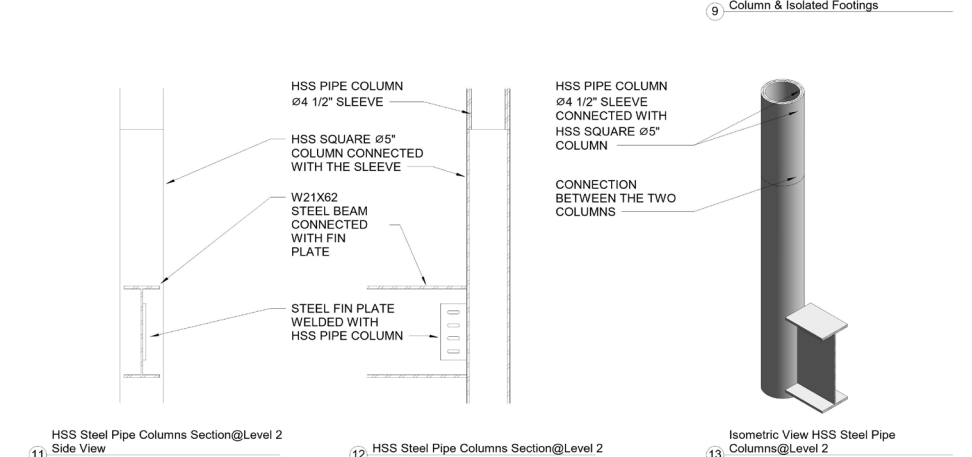
1 I Beam Column Detail@Baseplate to Concrete Footing Front View
3/4" = 1'-0"



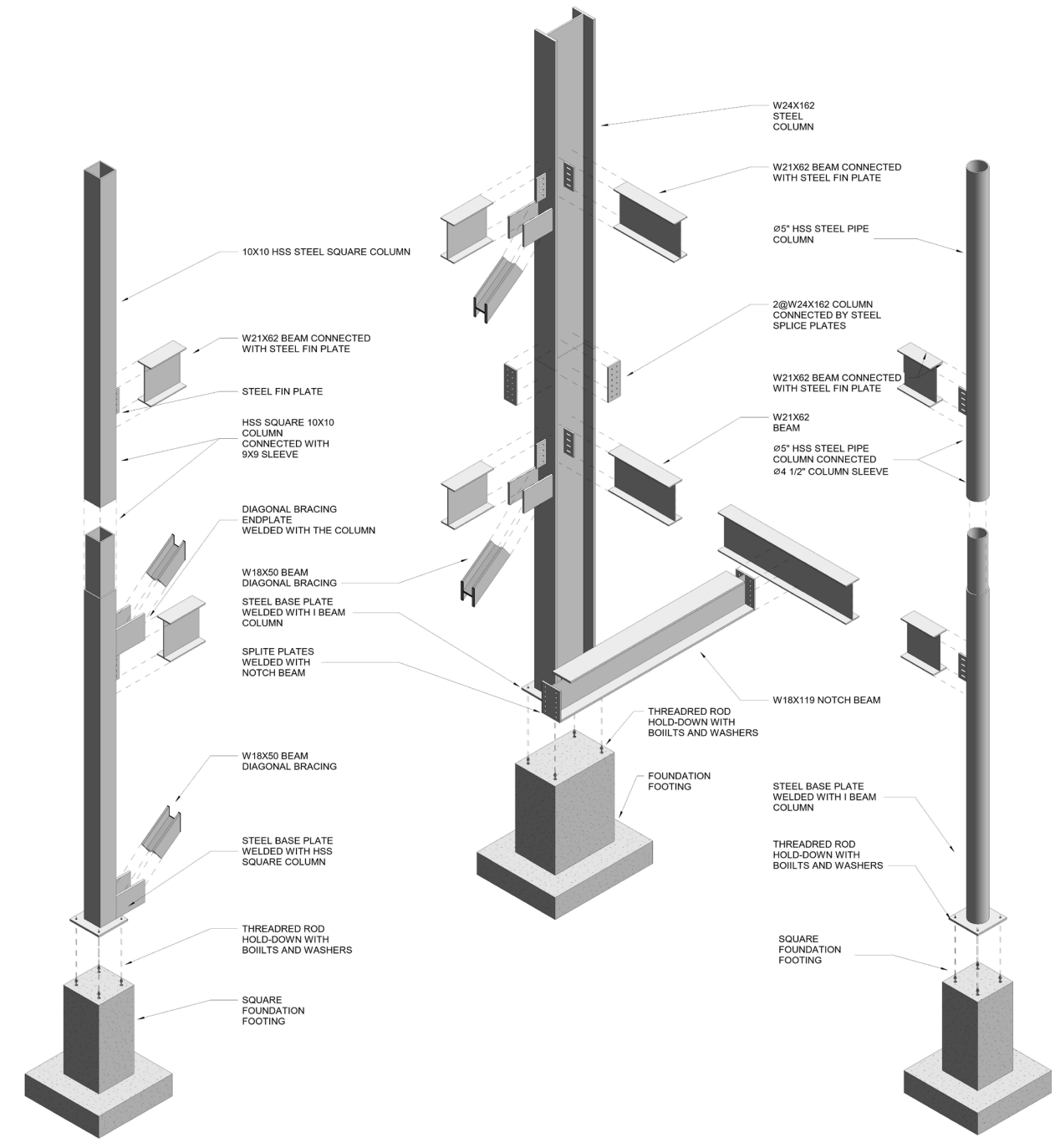
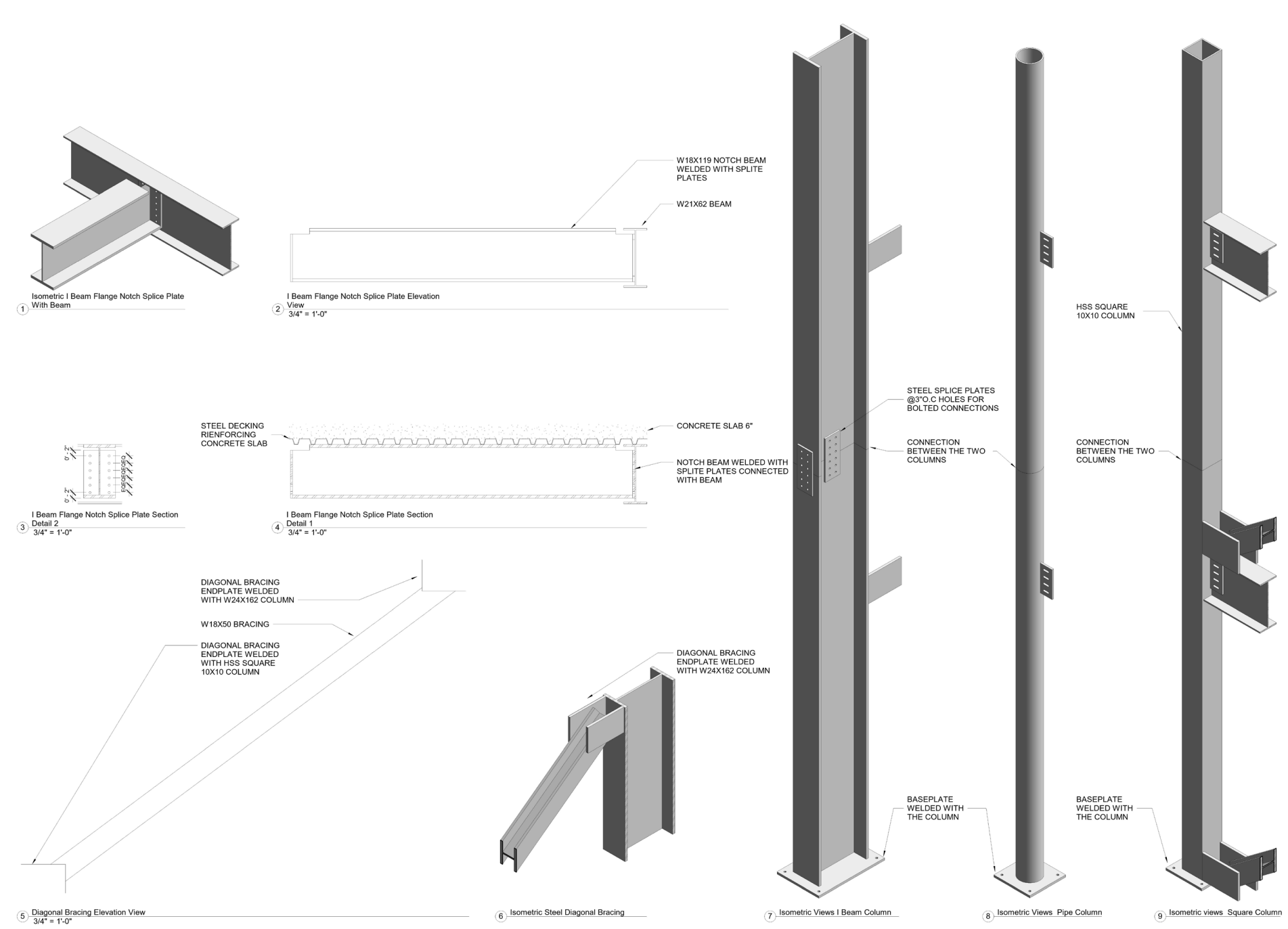
6 HSS Square Hollow Columns Section Detail@Level 2 Side View
3/4" = 1'-0"
7 HSS Square Hollow Columns Section Detail@Level 2 Front View
3/4" = 1'-0"



10 Isometric View HSS Steel Pipe Columns & Footing



11 HSS Steel Pipe Columns Section@Level 2 Side View
3/4" = 1'-0"
12 HSS Steel Pipe Columns Section@Level 2
3/4" = 1'-0"
13 Isometric View HSS Steel Pipe Columns@Level 2



EXTRA:RENDERING WORK

YEAR: 2023-SUMMER

STATUS: COMPLETE

CONCEPT OF THE ARTWORK: THE STRAIGHT-LINE LIGHTS ON THE ROOF OF THE BUILDING ARE DESIGNED TO CORRESPOND TO THE COLORS OF THE SKY AND WATER. THIS CREATES A RATHER COOL SENSATION. IN CONTRAST, THE INTERIOR LIGHTING OF THE BUILDING CONSISTS OF WARM. THIS GIVES THE ENTIRE SPACE A WARM AMBIANCE, SIMILAR TO A SAUNA.



