



PORTFOLIO

HAO LU, LOUIS

New York School of Interior Design MFAI
Graduated May, 2023

WHEN YOUR OWN INITIALS ARE ENOUGH



01

RESIDENTIAL DESIGN
Apartment& Furniture Design



02

PLANET OF DREAMS
Chappaqua Children's Library Design



03

UPLIFT HOTEL
Boutique Hotel Design



04

FUTURE FOOD CENTER
Office, Laboratory& Vertical Garden



05

FUTURE FOOD CENTER
Restaurant& Furniture Design

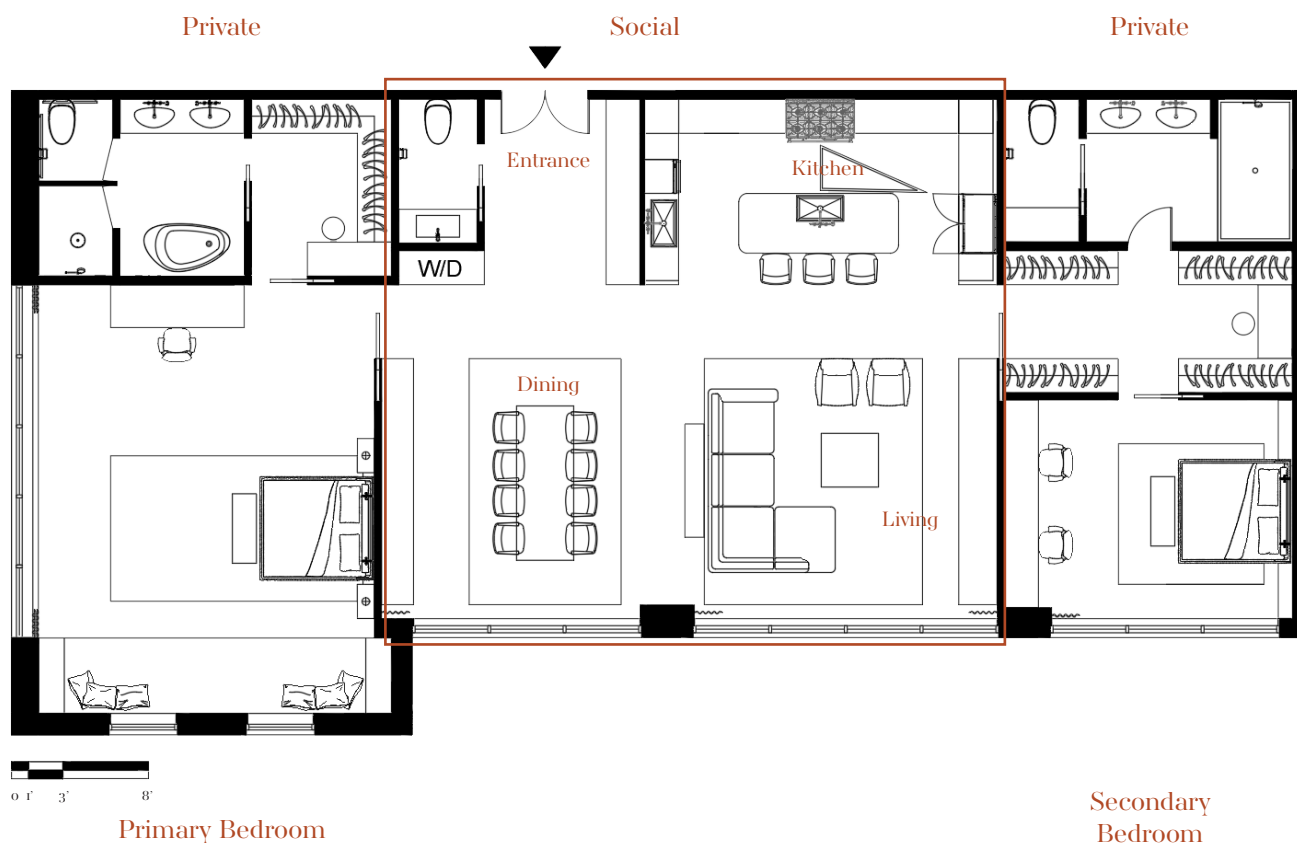
CONTENT

Equestrian Harmony

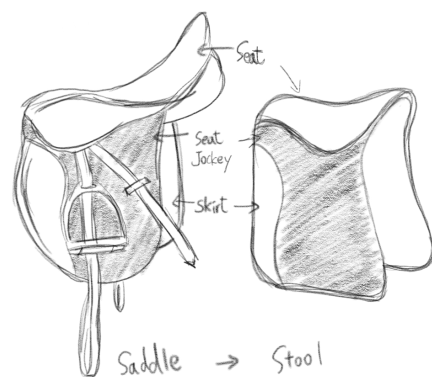
A Fusion of Horse-Inspired Harmony & Home Comforts

Concept

“Equestrian Harmony” is an exquisite apartment concept that seamlessly marries the serene bond between humans and horses with the comforts of a tranquil retreat. Rooted in the deep connection shared by equestrians and their equine companions, this design harmoniously blends equestrian passion with an atmosphere of peaceful relaxation.



Step into the living room, where the essence of horse riding is artfully embodied through a carefully curated palette of materials. Leather-clad furniture invites tactile comfort, evoking the sensation of saddles, while textiles adorned with natural patterns mirror the graceful flow of a horse’s form. Wooden accents, reminiscent of a rustic stable’s ambiance, coalesce effortlessly with modern furniture shapes, symbolizing the unison of time-honored tradition and contemporary living.



Living room



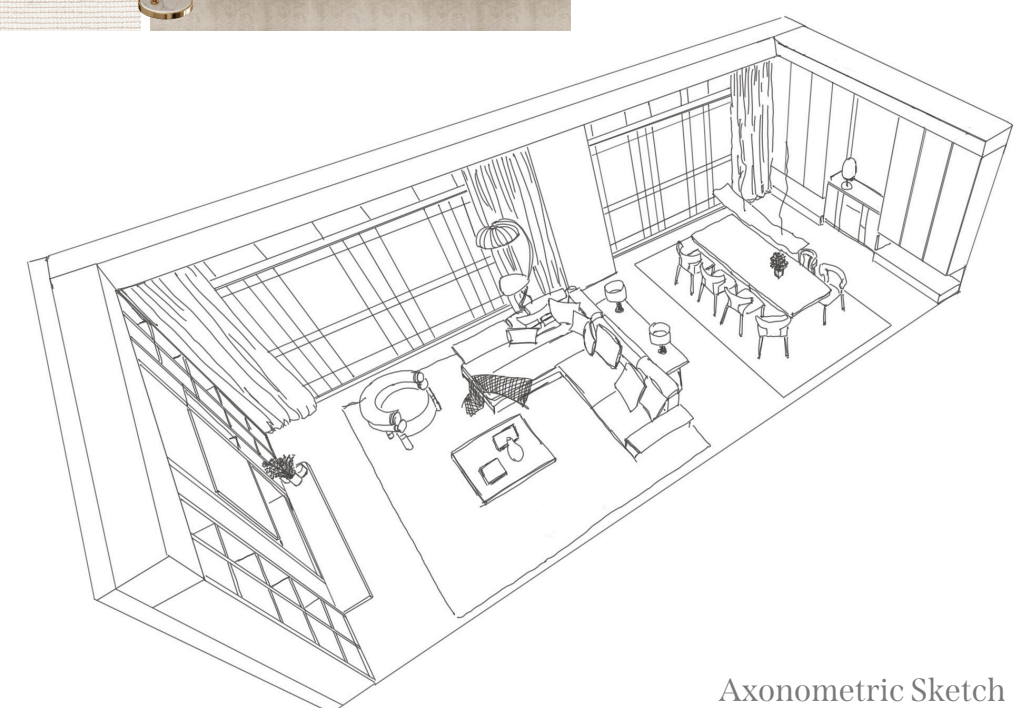
Dining Area



Living Space



FF&E



Axonometric Sketch



Bedroom

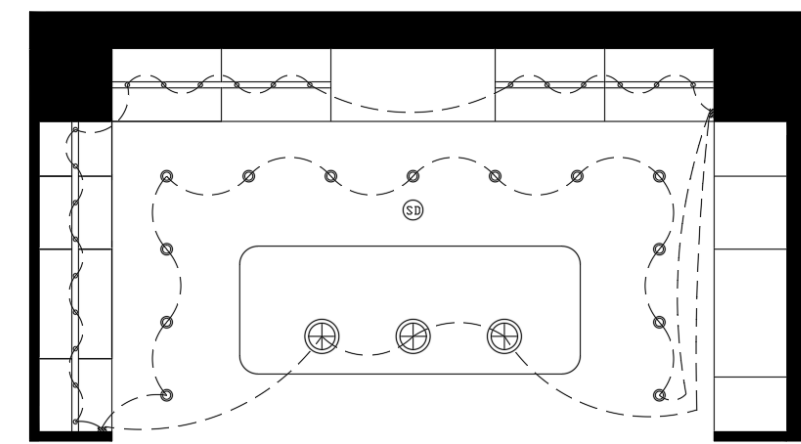
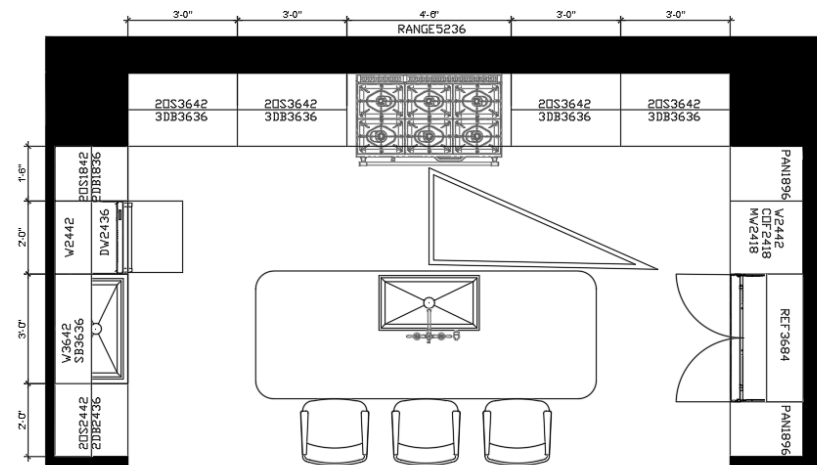


Powder Room



Bathroom

Kitchen Coding & Lighting Plan



LIGHTING LEGEND & SCHEDULE				
SYM	QTY	DESCRIPTION	MANUL/MODEL	FINISH
⊕	3	PENDANT DOWN LIGHT	PENDANT DOWN LIGHT	ONYX
⊞	-	UNDER CABINET LIGHTING	LINKABLE LED BEAM ADJUSTABLE UNDER CABINET STRIP	WHITE
⊙	13	RECESSED DOWN LIGHT	ALCON 14144-R-DR-2-INCH RECESSED LED MINATURE ROUND LIGHT	WHITE
⌘	6	SWITCH	FORBES LOMAX TOGGLE SWITCHES	AGED BRASS
Ⓢ	1	SMOKE DETECTOR	FLEX SMOKE DETECTOR	WHITE



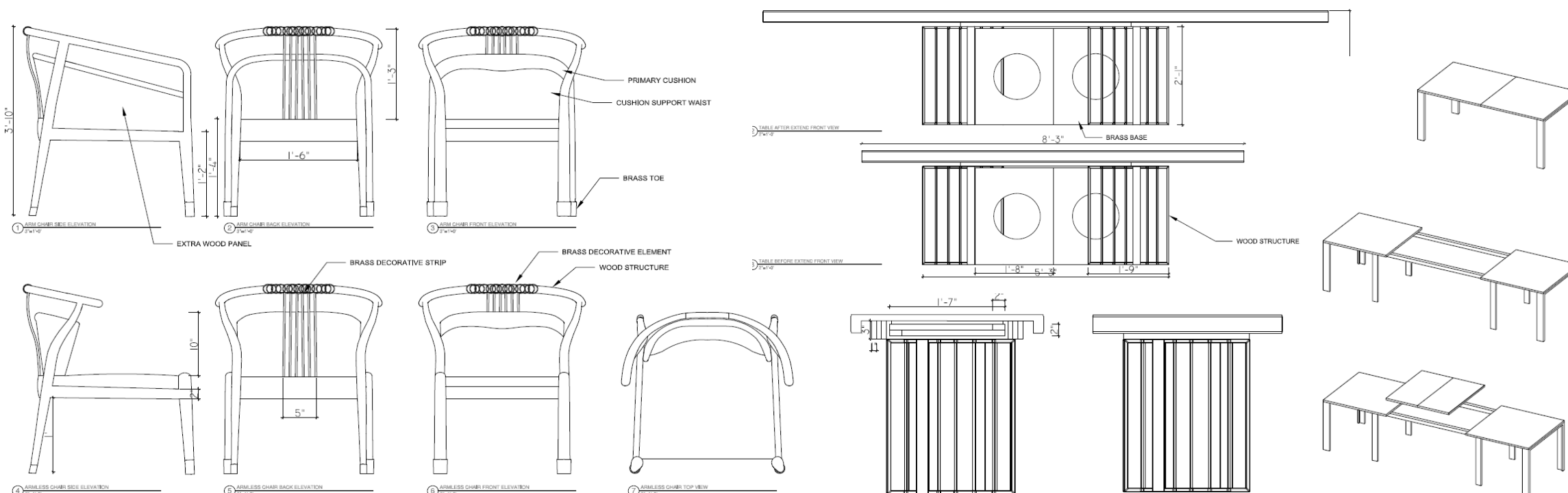
Walking Closet

EXTENSION TABLE & DINING CHAIRS

Introducing a stunning set of extension dining table and dining chairs, inspired by the timeless beauty of classical Ming dynasty furniture. This set perfectly embodies the spirit and combination of traditional and modern design elements, creating a unique and elegant dining experience.

The dining table is designed with a sleek and simple silhouette, featuring clean lines and a warm wood finish that perfectly captures the essence of traditional Ming dynasty design. The extension feature allows for additional seating, making it perfect for entertaining guests or hosting family dinners.

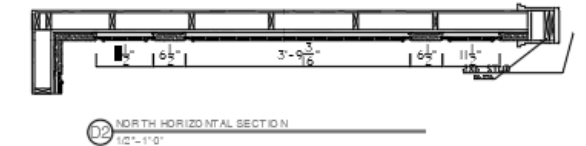
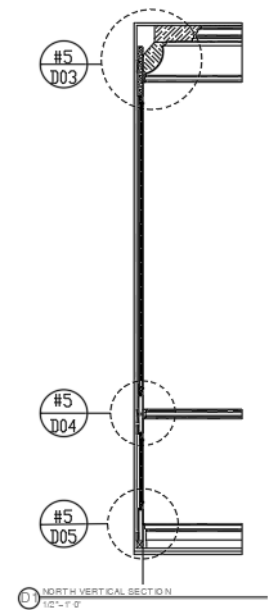
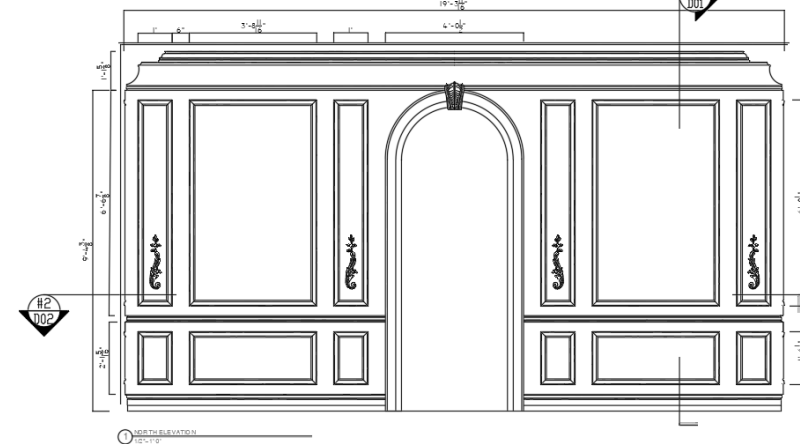
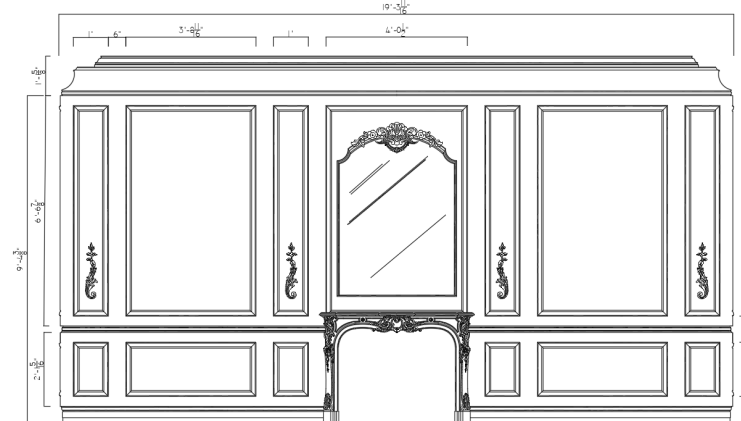
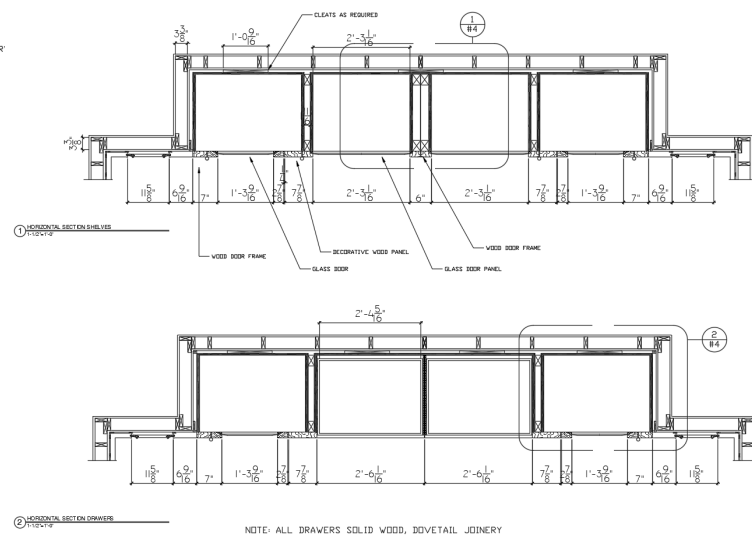
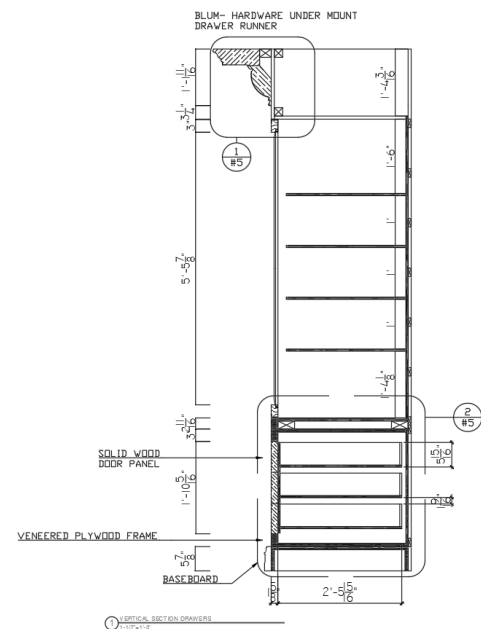
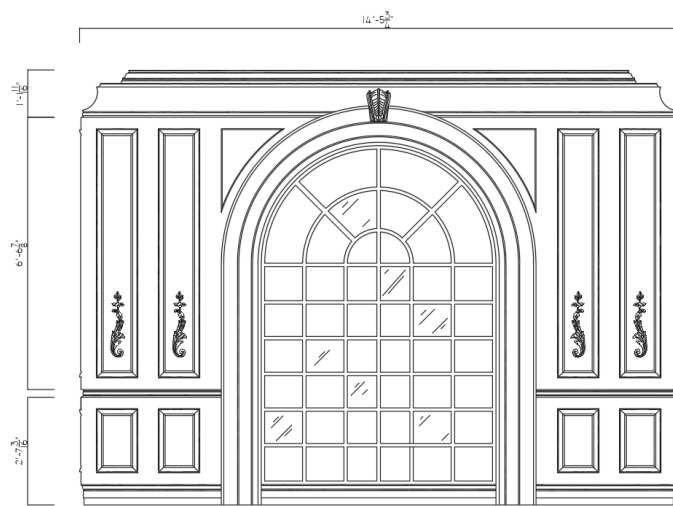
The dining chairs are crafted with a perfect blend of traditional and modern elements. The armless chairs feature a simple yet comfortable design, while the armchairs boast intricate carvings and a sophisticated silhouette that pays homage to the classic Ming dynasty style.



CLASSICAL INFLUENCE

This project unveils a dining room design that harmoniously marries classical style with the serene beauty of nature and the artistry of De Gournay's hand-painted wallpaper. Materials and color choices draw inspiration from these diverse influences.

Materials and colors reflect the calming and organic hues of the natural environment, bridging indoor elegance with the tranquility of nature. The room also pays tribute to de Gournay's wallpaper, with its intricate patterns and delicate motifs echoing throughout furnishings and accessories. The result is a dining room that radiates classical charm while celebrating nature's timeless beauty and de Gournay's craftsmanship.



PLANET OF DREAMS

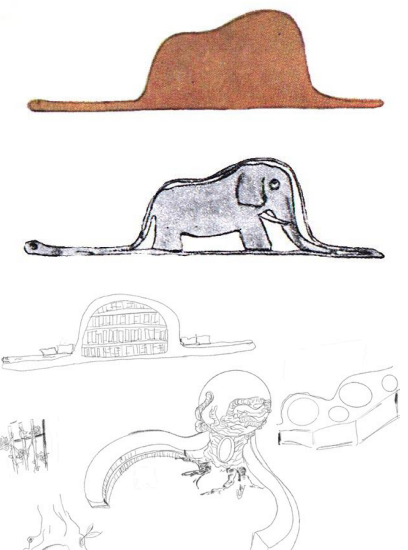
Chappaqua Children's Library Design

The library is an arena of possibility opening both a window into the soul and a door onto the world. Children start exploring the universe author created and developing their imaginations. "Reading is Dreaming With Our Eyes Open" can easily be construed as the connection between authors – the storytellers – and readers and how their words capture a reader's imagination. A vivid imagination turns dreams into a reality prompted by well-crafted words that jump off the page. Hence, Design theme and inspiration is the famous fable and modern classic children's book 'The Little Prince' published in 1943 by French aviator and writer Antoine de Saint-Exupéry. The simple tale tells the story of a child, the little prince, who travels the bizarre universe gaining wisdom.

CONCEPT & PARTI

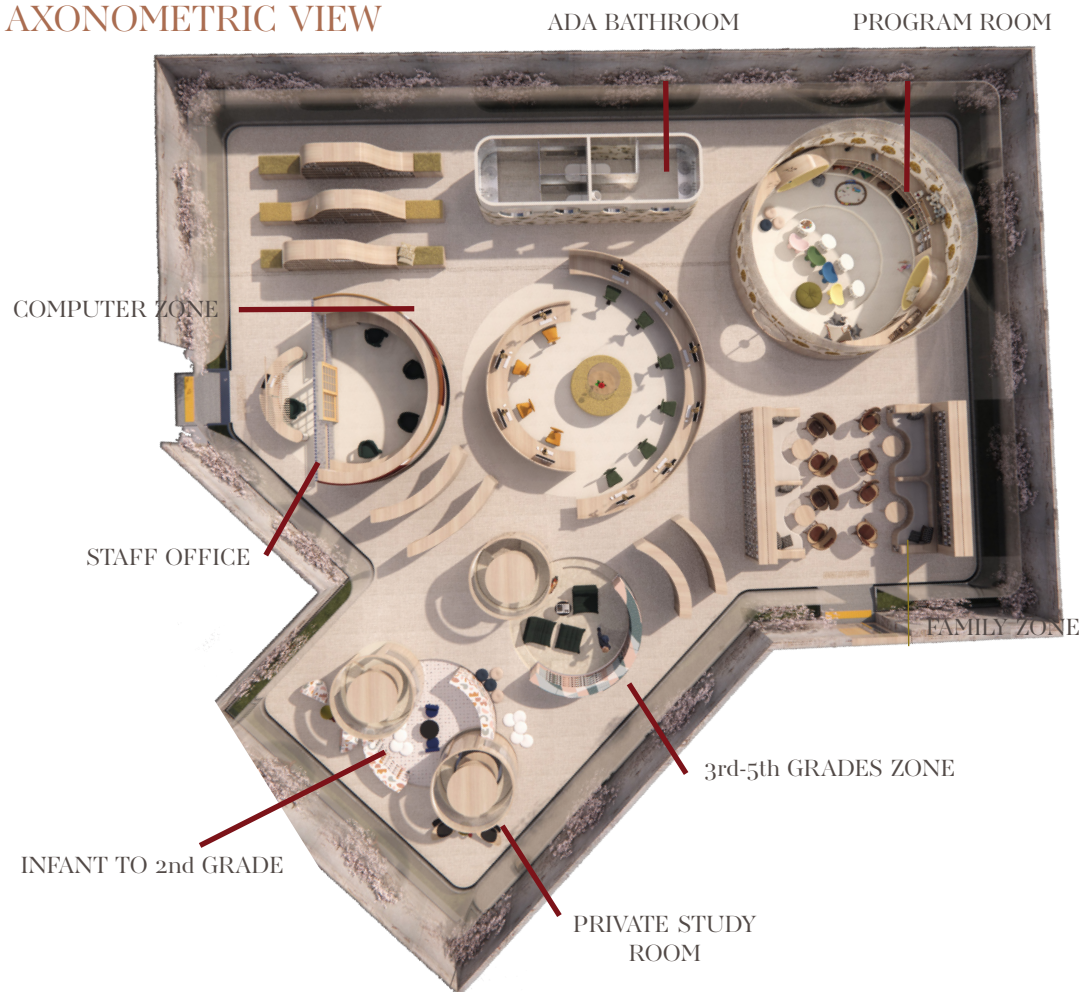
FUN
UNEXPECTED
SOFT

O



Computer Section

AXONOMETRIC VIEW



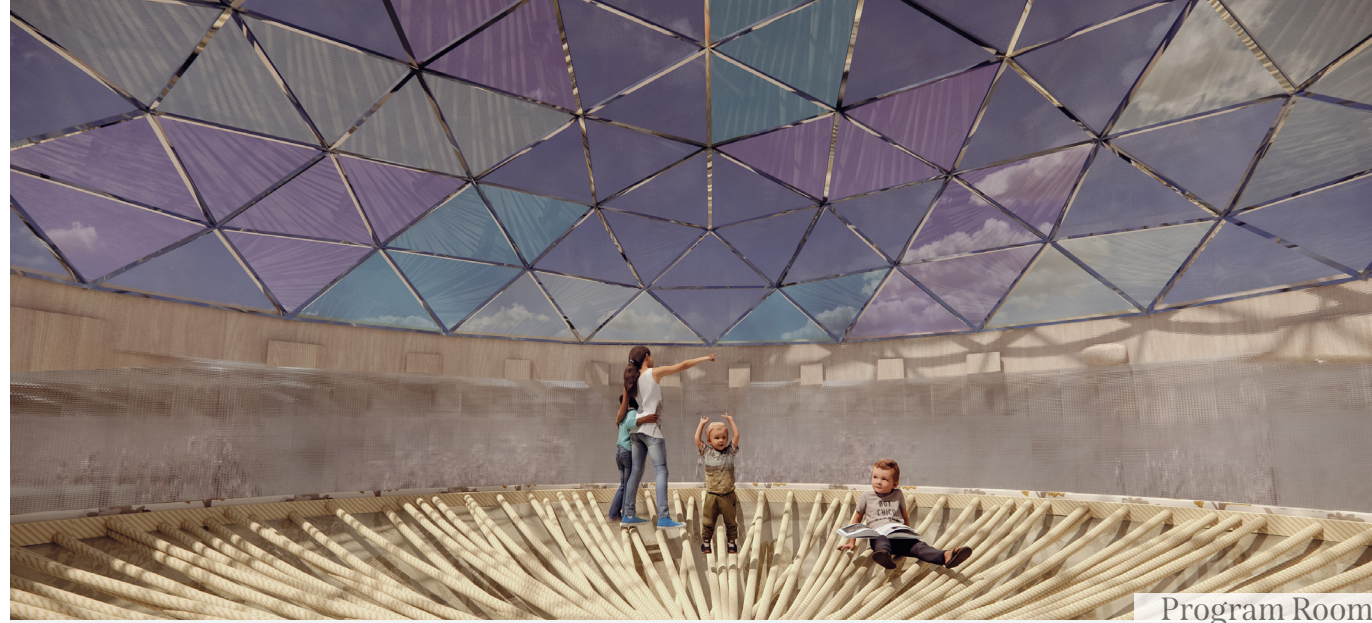
Bookshelf



3rd-5th grade zone



Family Zone



Program Room



Program Room



FF&E

The Little Prince draws unflattering portraits of grown-ups as being hopelessly narrowminded. In contrast, children come to wisdom through open-mindedness and a willingness to explore the world around them and within themselves. The central theme of the fable is expressed in the secret that the fox tells the little prince: "It is only with the heart that one can see rightly: what is essential is invisible to the eye."



Corner Reading



Corner Reading

UPLIFT BOUTIQUE HOTEL

Brand

Combining the organic practice with Montréal's authentic and laidback vibe, Uplift is a destination spa resort under Unwrapped Life. It aims to unite multiple organic brands and elevate them to a one-line luxurious experience.

- Water conservation system
- Local made zero harmful cleaning products

"While we are taking care of the guests, we are also looking after our planet."

Partner

Unwrapped Life is a leading plastic-free hair and body care brand from Calgary, AB, Canada, on a mission to prove that performance and product packaging are not mutually exclusive. They take all the ingredients that cleanse and benefit your hair and body and make them into concentrated bars.

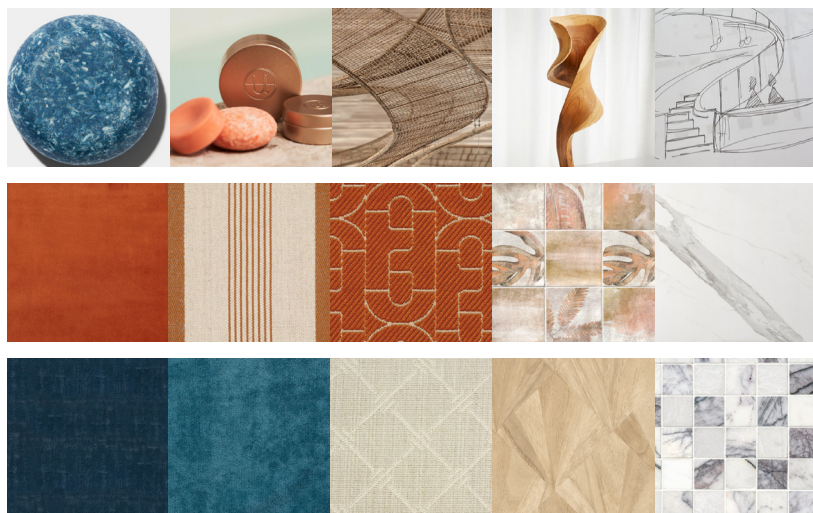


Their solid-form bars do everything bottled products can do while also exceeding all your self-care goals.

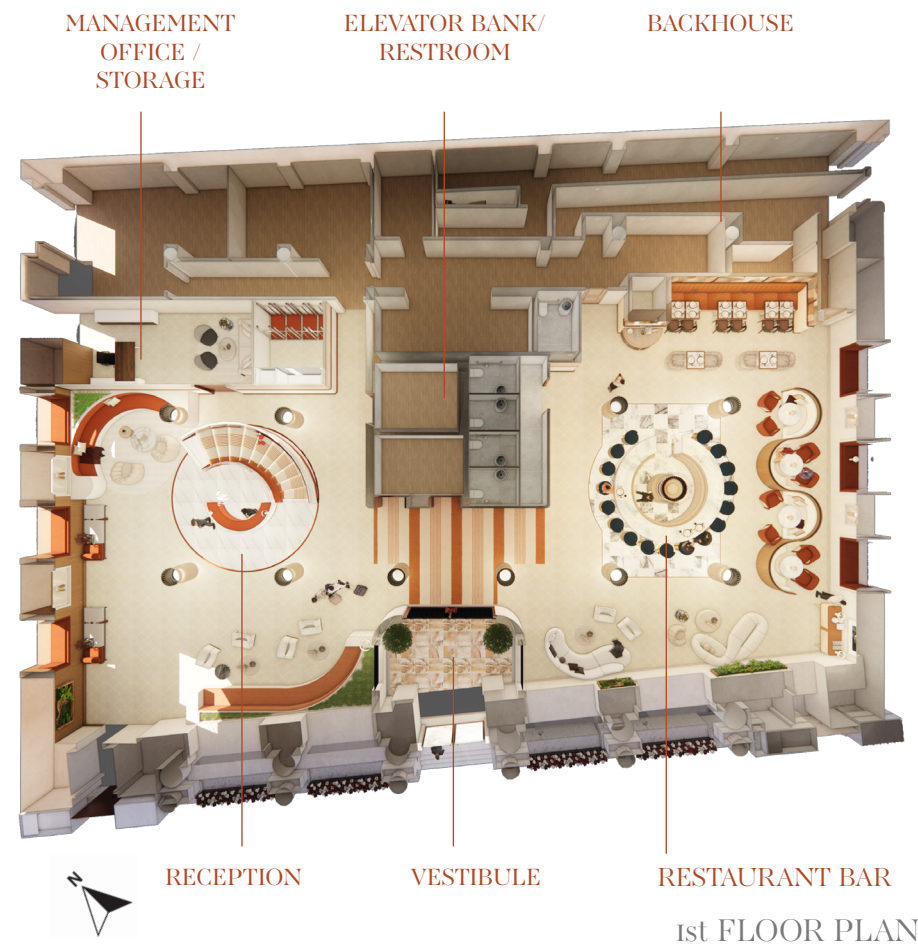
Also cooperated with Wildlife Preservation Canada, and WWOOF Canada.

Concept
UNEXPECTED
UNWRAPPED
ORGANIC

Parti
U



Reception



MANAGEMENT
OFFICE /
STORAGE

ELEVATOR BANK/
RESTROOM

BACKHOUSE

RECEPTION

VESTIBULE

RESTAURANT BAR

1st FLOOR PLAN



Section





Lounge



Master Bedroom

PENTHOUSE SUITE

Uplift's Rooms and Suites are lofty urban sanctuaries inspired by the airy architecture in East Asia. Ideal for business or leisure guests alike, they offer a never-before-experienced sense of comfort in Montreal. For Uplift's Signature Suites, they offer a gallery kitchen

adjacent to six people dining area facing a private cozy living space. Large windows provide immersive views in the spacious primary bedroom.

Unpack your stress, Uplift you life.



Living Room



Onsen



Restaurant Bar



Restaurant



Hallway



Amenities

Unpack your stress, Uplift your life.

- LEGEND**
- 1. Entrance
 - 2. Men's Changing Room
 - 3. Femal's Changing Room
 - 4. Bar
 - 5. Treatment Room
 - 6. BOH
 - 7. Onsen
 - 8. Steam Room& Sauna



Treatment Room

FUTURE FOOD CENTER

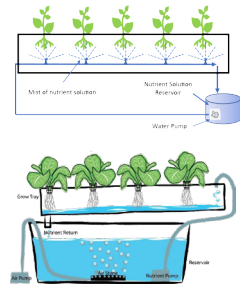
Food Research Laboratory

This organization seeks to end world hunger by improving crop genetics, increasing food production quantity and quality, and developing sustainable growing practices using innovative technology and scientific research. Their focus on accessibility and sustainability aims to create a more equitable future for all.



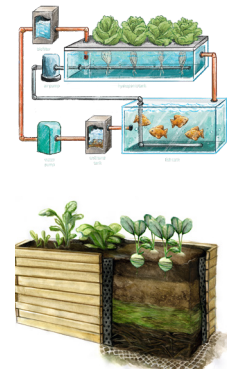
Urban Agriculture

Vertical agriculture creates self-sustaining ecosystems that produce fresh and healthy food with minimal environmental impact using hydroponics. This system maximizes space efficiency and allows for year-round production while reducing waste and pollution. It has the potential to revolutionize food production worldwide by making it more sustainable, efficient, and accessible to communities.



Educational Center

This interactive and educational facility promotes a self-serve, Eco-friendly food chain, showcasing scientists' work, vegetables, and seeds in a museum to educate visitors. By providing hands-on experiences and resources, it promotes sustainable farming practices and elevates nearby living quality.



Concept

Drawing inspiration from the Cathedral as a natural community center, the Future Food Center creates an innovative space that not only promotes sustainable farming practices but also serves as an interactive educational hub for visitors to learn about the importance of food in a changing world.



Laboratory



Farmer's Market

Site

BRT Powerhouse 322 3rd Ave., Brooklyn

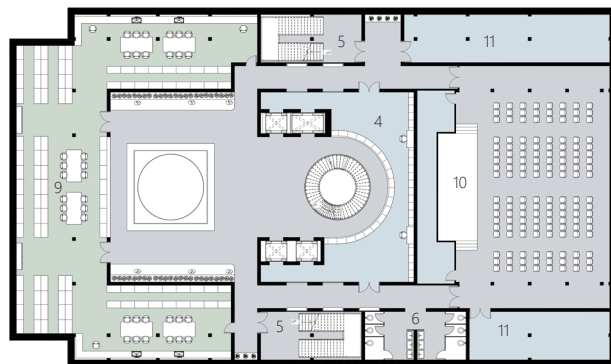
Area: 100,000 SF Built: 1902

Neighborhood: Gowanus Canal

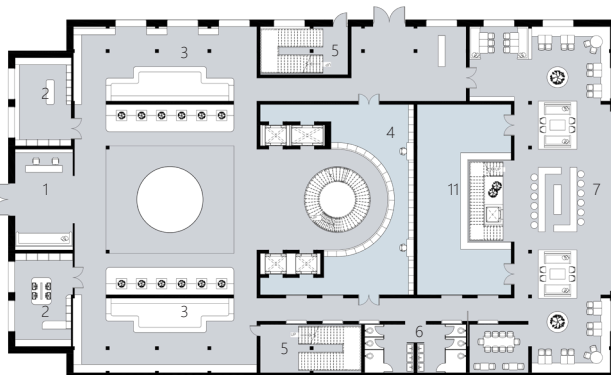


The BRT Powerhouse is a historic building in the Gowanus Canal neighborhood of Brooklyn, New York. Built in 1906 to supply electricity to the Brooklyn Rapid Transit Company's trolley system, it has since been restored and re-purposed as a mixed-use development. The Powerhouse is a symbol of the Gowanus Canal's transformation from an industrial wasteland to a sustainable community and showcases how historic buildings can be preserved and given new life in urban development.

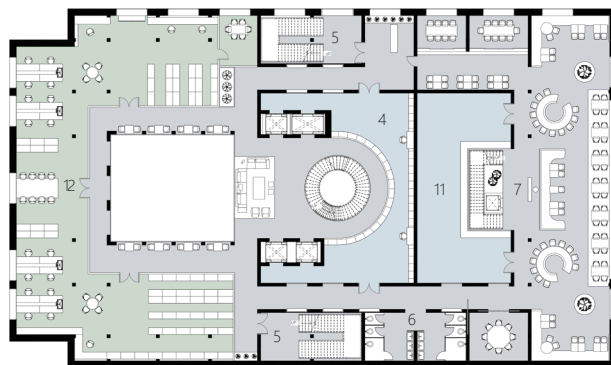
Bi FLOOR PLAN



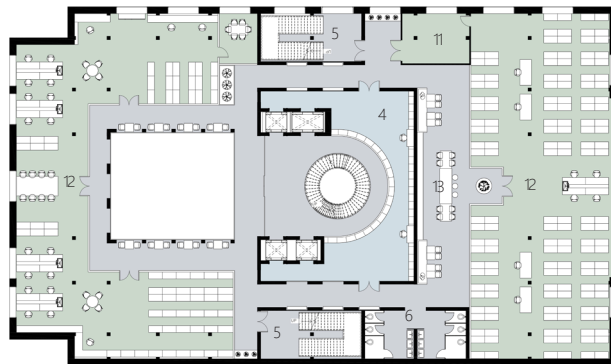
FIRST FLOOR PLAN



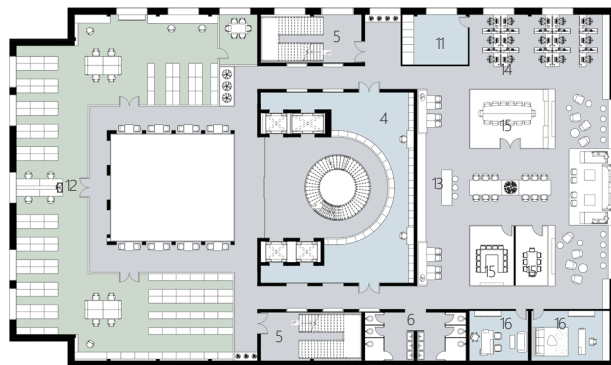
SECOND FLOOR PLAN



THIRD FLOOR PLAN



FOURTH FLOOR PLAN



Laboratory

Laboratory

Laboratory

Entrance

Work Shop

Seed Vault

Office

Laboratory

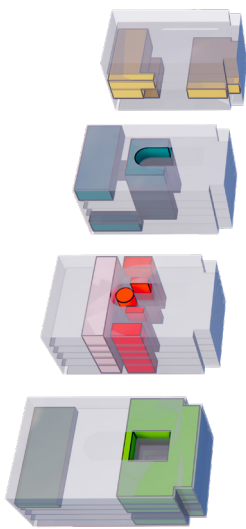
Restaurant

Restaurant

Auditorium

LEGEND

- Entrance
- Retail Store
- Farmer's Market
- Seed Vault
- Fire Exit
- Gender Neutral Bathroom
- Restaurant
- Outdoor Raised Bed Farm
- Work Shop
- Auditorium
- Back of House
- Laboratory
- Pantry
- Office
- Conference Room
- Management's Office



PUBLIC ACTIVITY

- FARMER'S MARKET
- RESTAURANT

STAFF ONLY

- OFFICE
- SEED VAULT
- BACK OF HOUSE

SERVICE

- STAIRS/ ELEVATORS
- FIRE EXIT
- GENDER NEUTRAL BATHROOM
- KITCHEN AND STORAGE

FARM/LAB

- VERTICAL FARM
- GENETIC LABORATORY



Laboratory



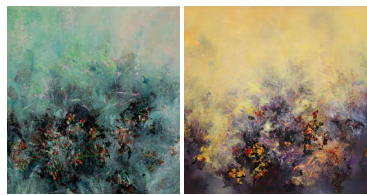
Lobby- Staircase



Office



Office



FF&E

The project's material, fabric, and furniture selection concept embraces a futuristic and inviting design while incorporating a strong connection with the local community. Collaborating with local artists, the project utilizes their creativity to infuse the space with unique and meaningful artwork. Moreover, local resources are carefully integrated into the design, promoting sustainability and supporting the community. Reclaimed materials add a touch of authenticity, providing character and a sense of history to the environment. This approach creates a harmonious blend of innovation, local flavor, and environmental consciousness, resulting in a space that is both inspiring and rooted in its surroundings.



Seed Vault



Hallway



2nd Floor Restaurant



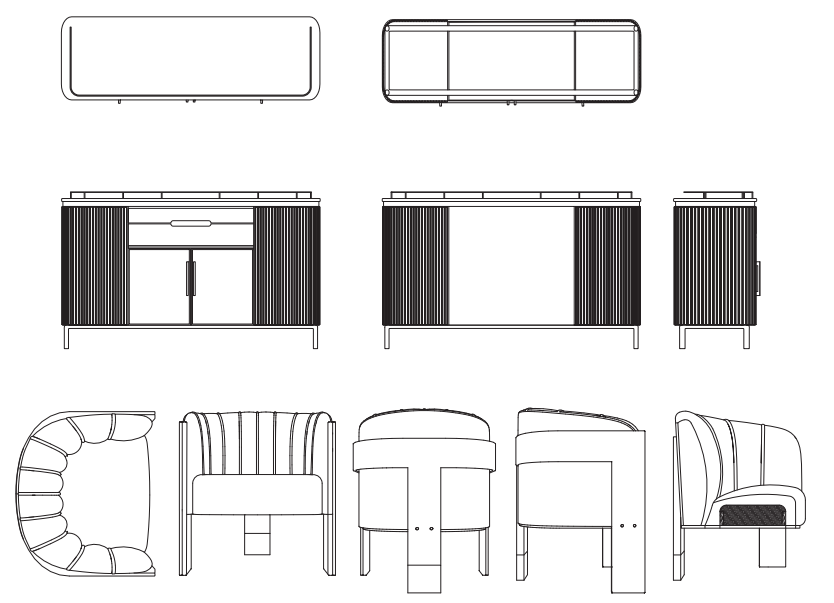
Restaurant



Restaurant



1st Floor Bar





PORTFOLIO

HAO LU, LOUIS

New York School of Interior Design MFAI Graduated
May, 2023

WHEN YOUR OWN INITIALS ARE ENOUGH

Hao.lu@nysid.edu



Hao.lu@nysid.edu