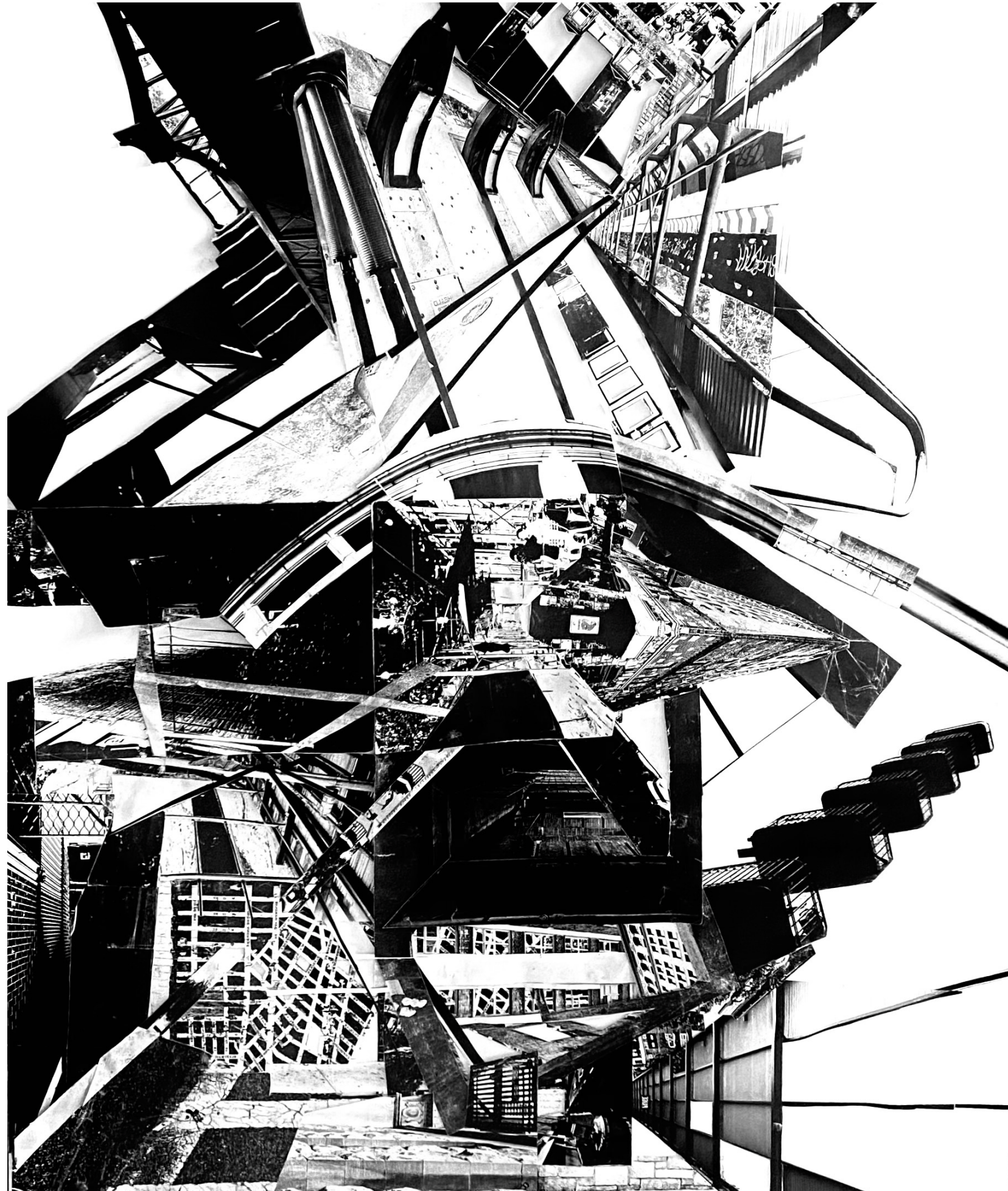


PORTFOLIO

SELECTED PROJECTS

2018 - 2023

ELIF SU UYAR



C O N T E N T

I. POST PRODUCING THE FARNSWOTH HOUSE

II. GOWANUS GARDENS

III. THE JUNCTION

IV. ARTS AND CRAFTS CENTER

VI. BORDU HOUSE

POST-PRODUCING THE FARNSWORTH HOUSE

Archived Project

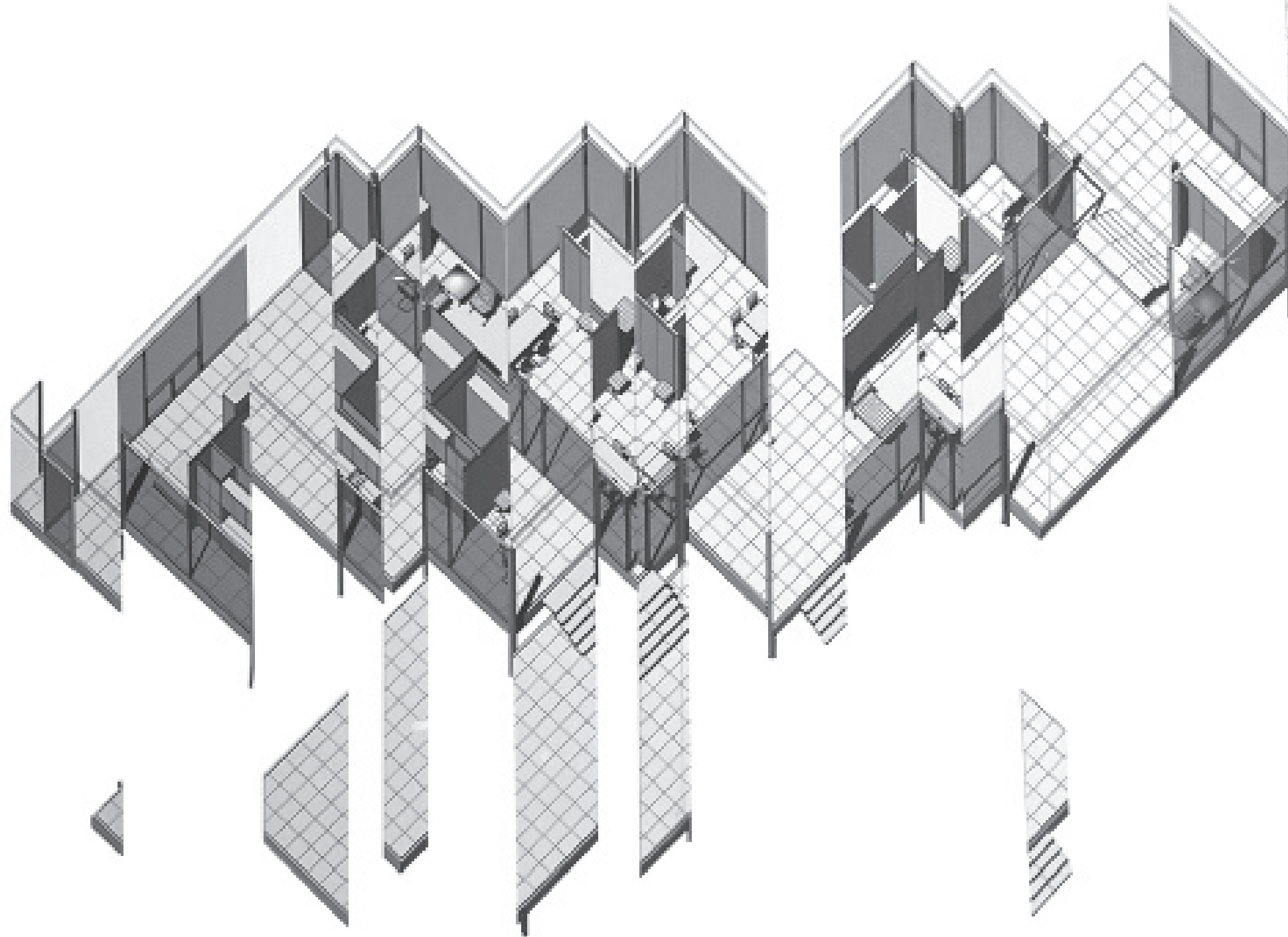
Top Honors Award for Best Thesis

Program: Essayistic Project

Design Critics: Lawrence Blough & Jason Vanerie Beine
Design 500 - Fall 2022 & Spring 2023

Partner: Nathan Alegria

The project creates a semi-autonomous design process that adapts cinematic techniques to discover alternative formal, social, organizational, and occupational conditions, which are latent within the architectural canon. Selected filmic techniques are used to develop a rigorous framework that creates an analytical and generative process. Each adapted cinematic method is reinterpreted into an architectural operation, which simultaneously expands, disrupts, and challenges the authoritative canon as it exists in the contemporary and cultural context. Post-Producing The Farnsworth House offers inventive conceptual and operational strategies that exploit the canon as a pivotal transition to produce contemporary and alternative scenarios.

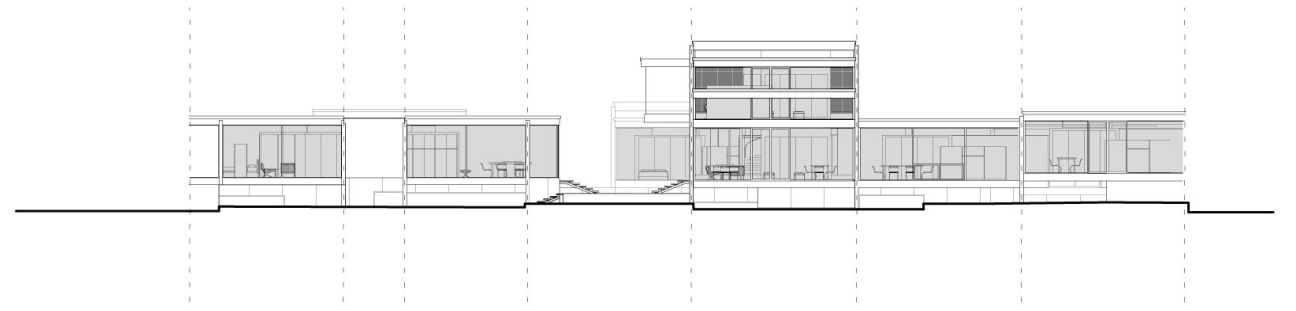
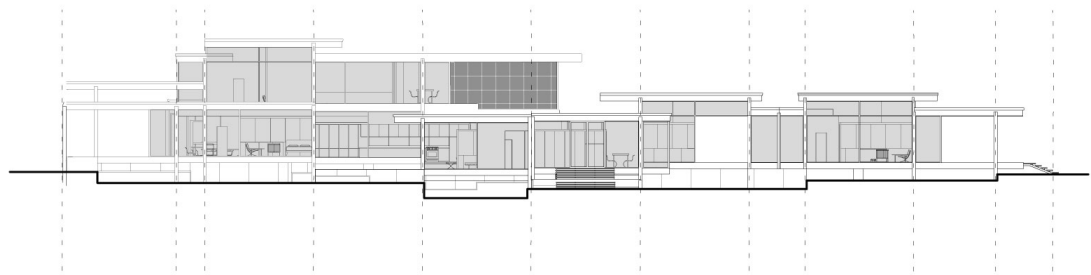
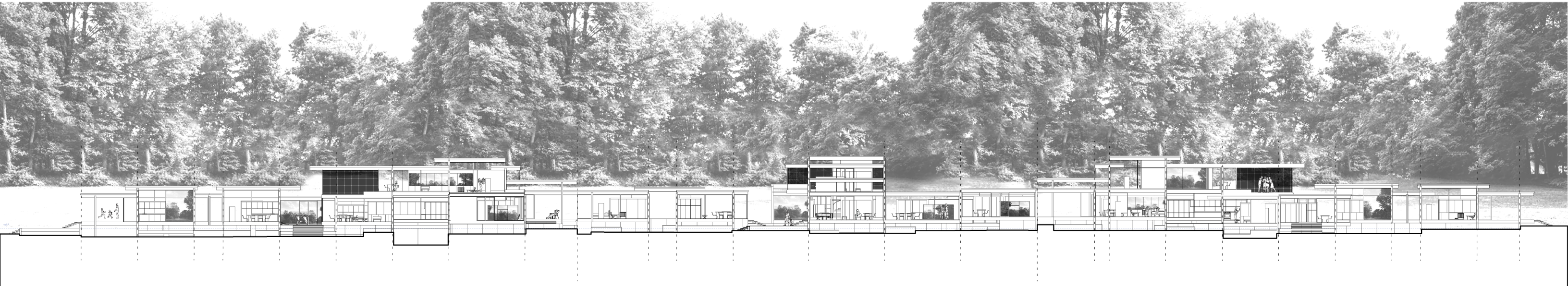


FINAL ITERATION

The latest iteration of the building is for multiple occupants. The organization provides a centralized common area connecting each of the decentralized dwellings. The common area serves as a centralized communal and social hub. The core in Mies's architecture tries to consolidate and conceal essential functions within the building. The cinematic process has allowed us to manipulate the service core and change its state into a space for privacy, storage, and circulation.



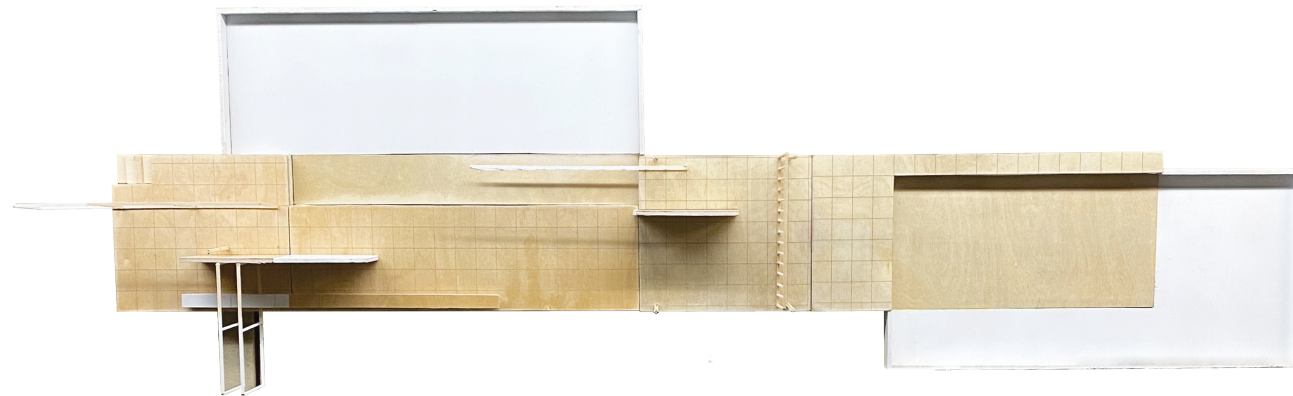
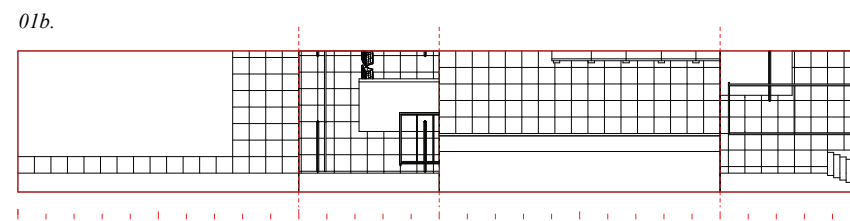
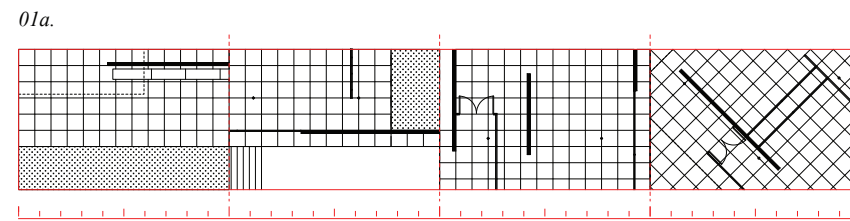
FINAL ITERATION



MONTAGE STUDIES

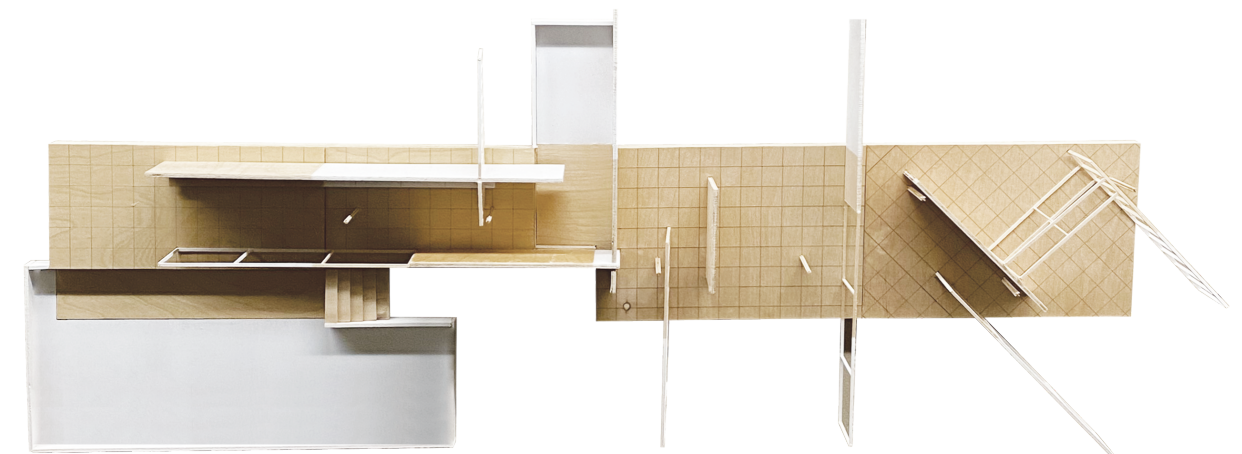
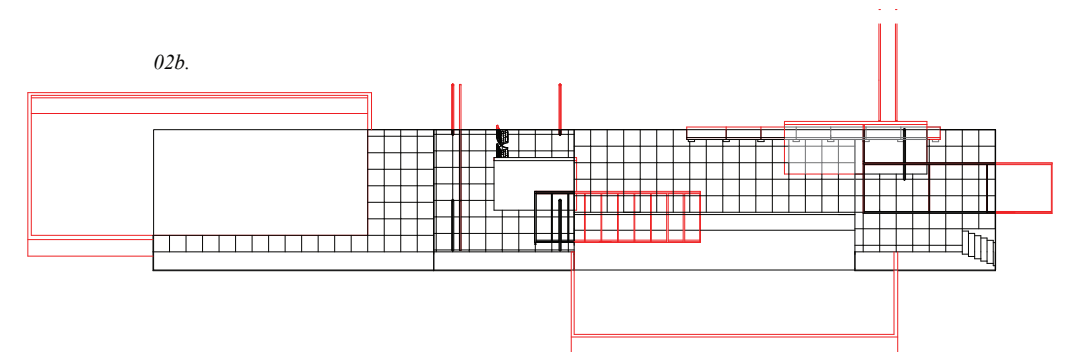
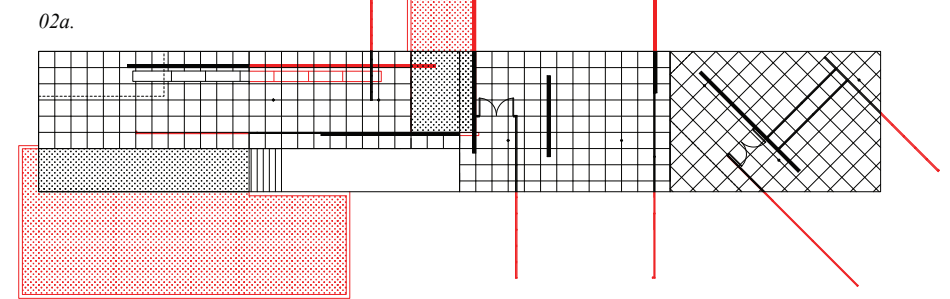
01: Metric Montage

The fundamental criterion for this construction is the absolute lengths of the pieces. Metric Montage is cutting to an exact measured meter or length of time regardless of the shot itself. Metric Montage can lie between its two extremes of simplicity and complexity: alternating two varying piece lengths according to two kinds of content within the pieces.

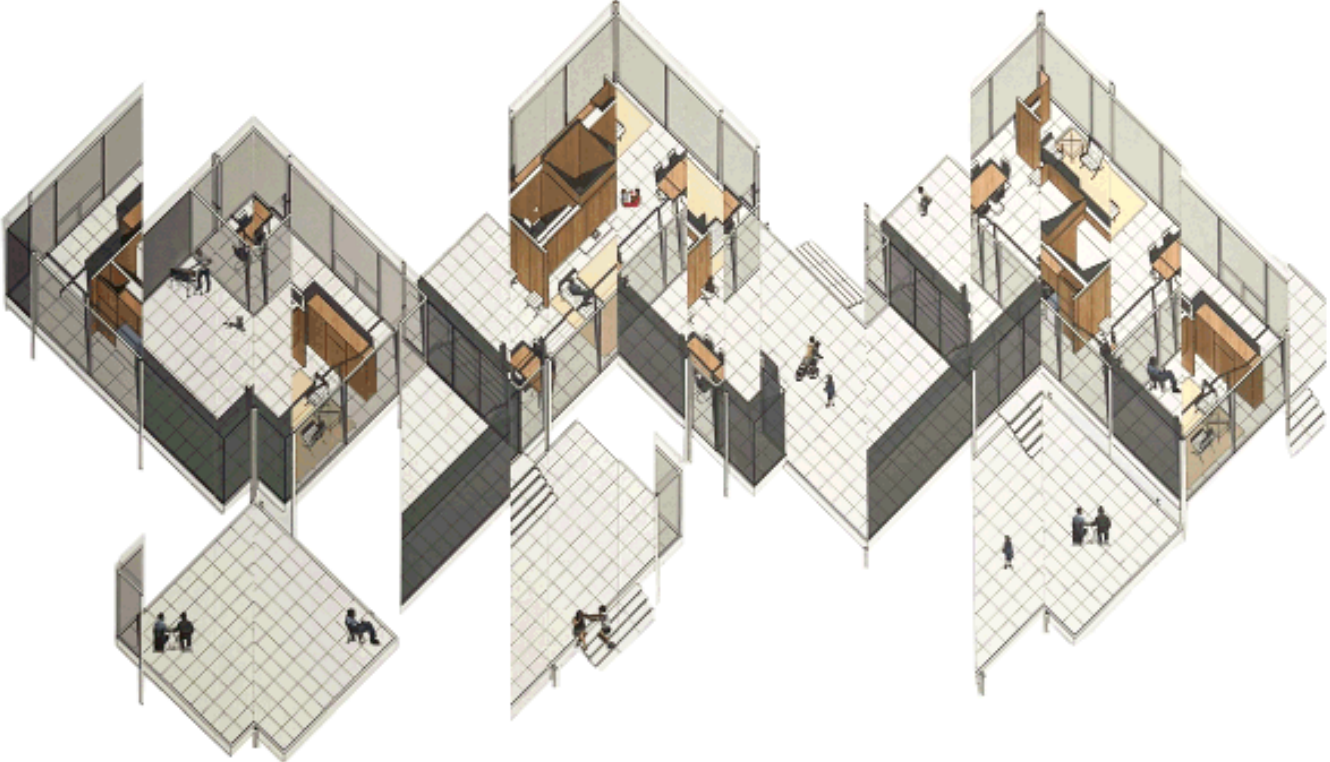


02: Cross Dissolve

A transition between two shots in which the first gradually fades out as the second is fading in, so that they overlap. This typically signifies the passage of time. Compared to a cut, the relative infrequency of its use makes it a marked transition



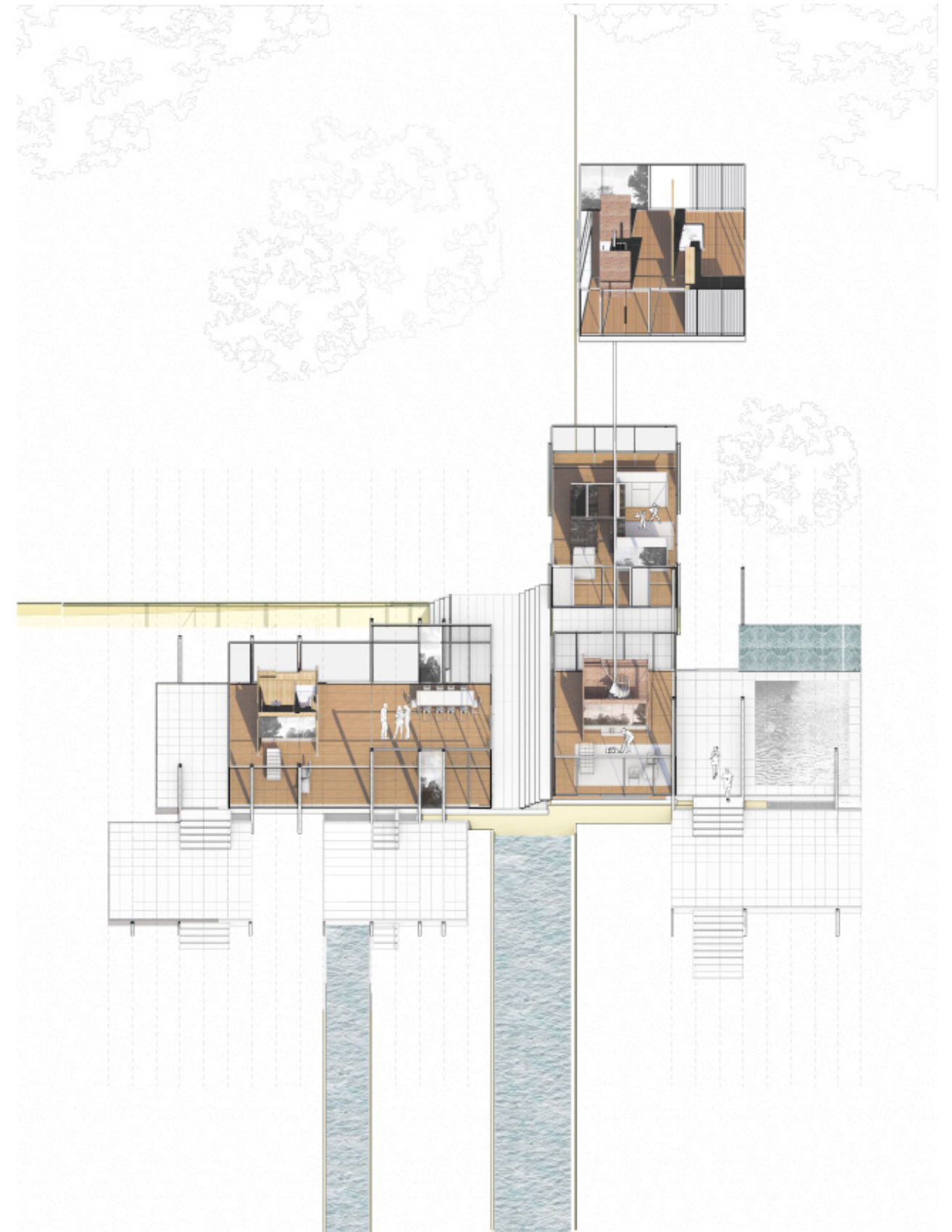
A X O N O M E T R I C S T U D I E S



OCCUPATION



In this iterations, we are exploring strategies to reformat the singularity of the Farnsworth House. The once single occupant weekend retreat is now proliferated into a multi-family home. This iteration aims to address some of the critiques and challenges of the Farnsworth House- such as the lack of privacy, limited storage, and flooding concerns.



M A T E R I A L S T U D I E S

Material changes happen when objects collide, transform, or shift. They inherit material that is embedded with the canon, but deployed subversively. The pristine and delicate material shifts to horizontal surfaces. The use of the red velvet curtain and mirror is now a strategy to privatize the bedroom without needing to erect an opaque wall.



GOWANUS GARDENS

Archived Project

300 Intermediate Design Honors Recognition

Program: Community Center

Location: Rockaways Beach, Queens NY

Design Critic: Ane Gonzalez Lara

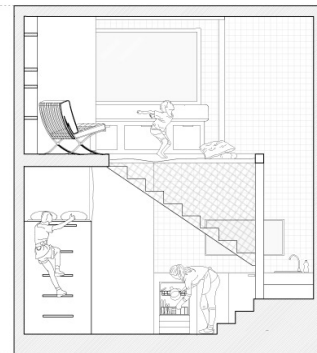
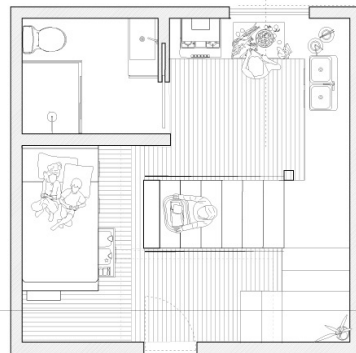
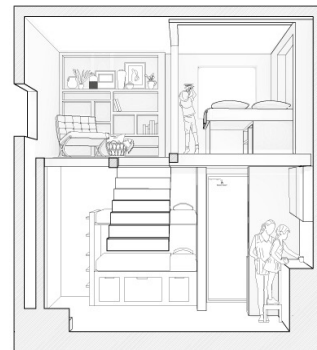
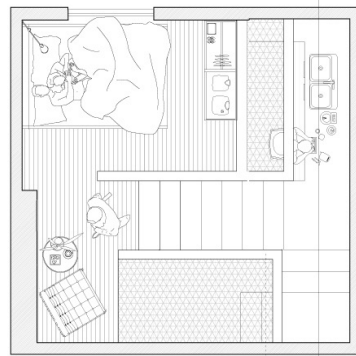
Design 302 - Spring 2021

Partner: Antonio Velasco

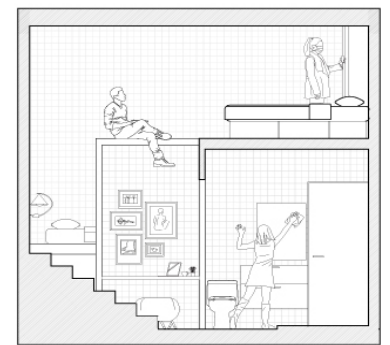
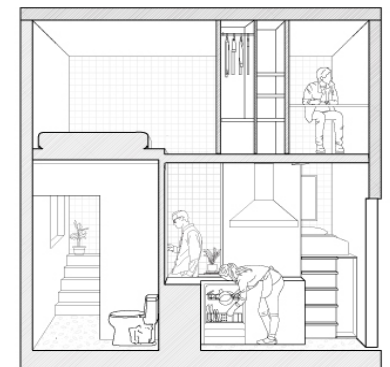
This Multigenerational cohabitation space is located in 586 Sackett, Brooklyn, Gowanus, a neighborhood considered polluted and lacking in greenery. The project aims to bring nature into this neighborhood by providing green spaces for the community and residents. In addition, the project promotes social interactions between the users by creating spaces that revolve around nature and appeal to every age group. Our design explores private spaces and their relationship with the public spaces created in between each unit. As a spatial organizer, the building contains three different courtyards, two of which are open to the public and become an extension of the city. These design strategies were used to connect the residents: visually, physically, and collectively to nature.



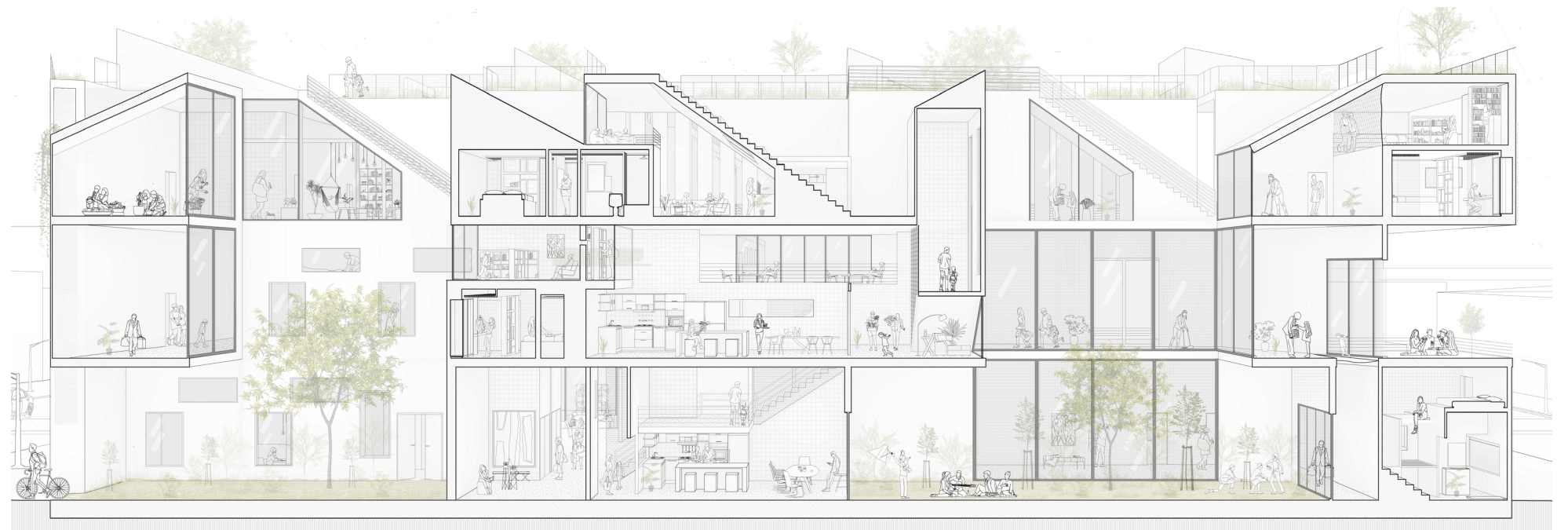
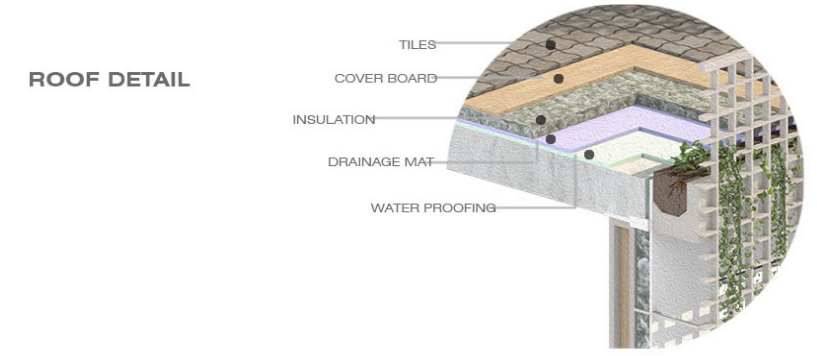
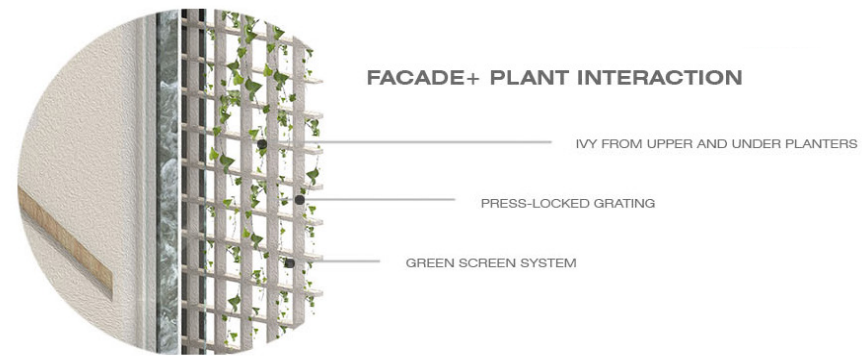
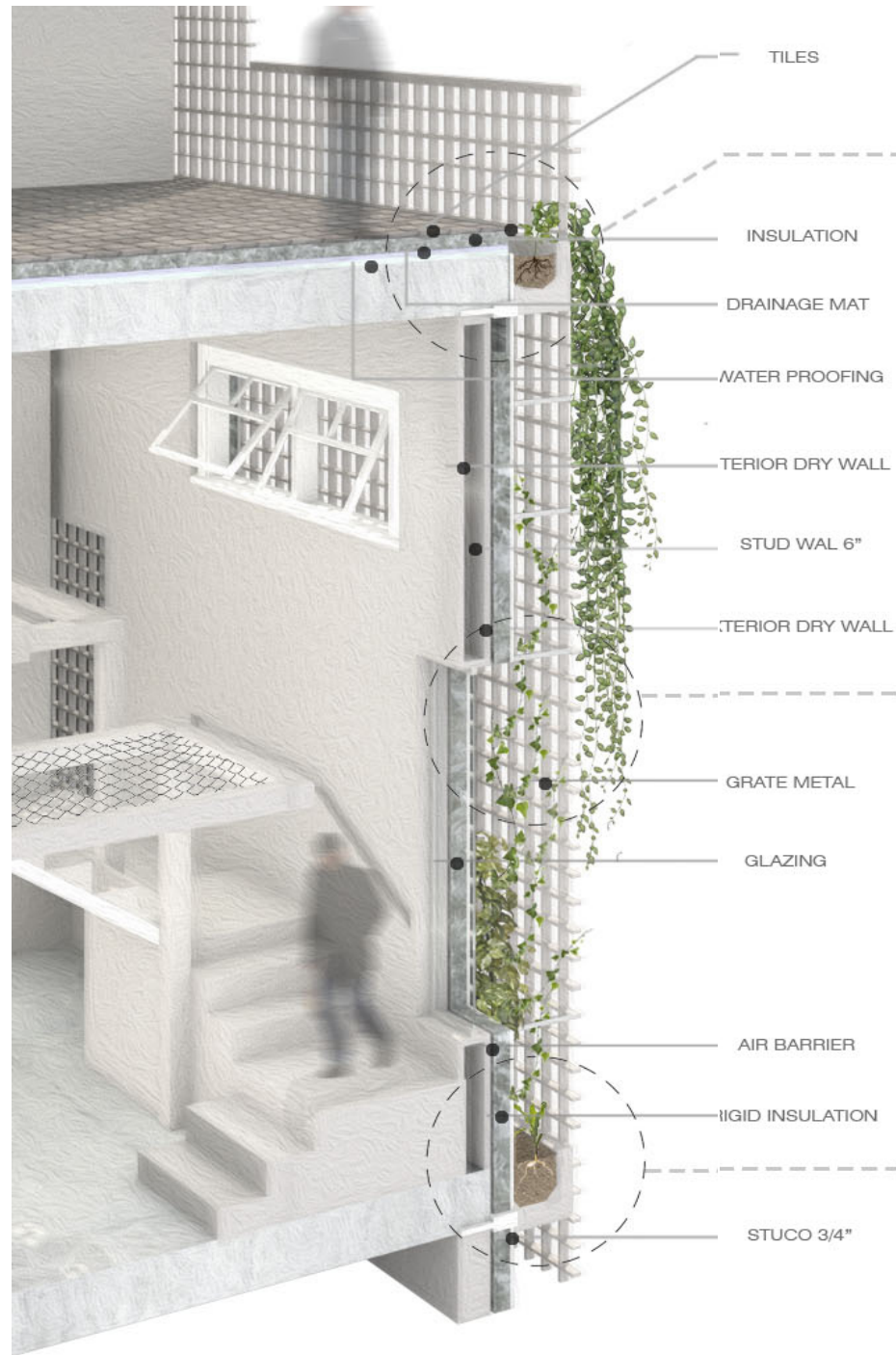
FAMILY UNIT



SINGLE UNIT



DETAIL & LONG SECTION



CONSTRUCTION DOCUMENTS

Revit + BIM

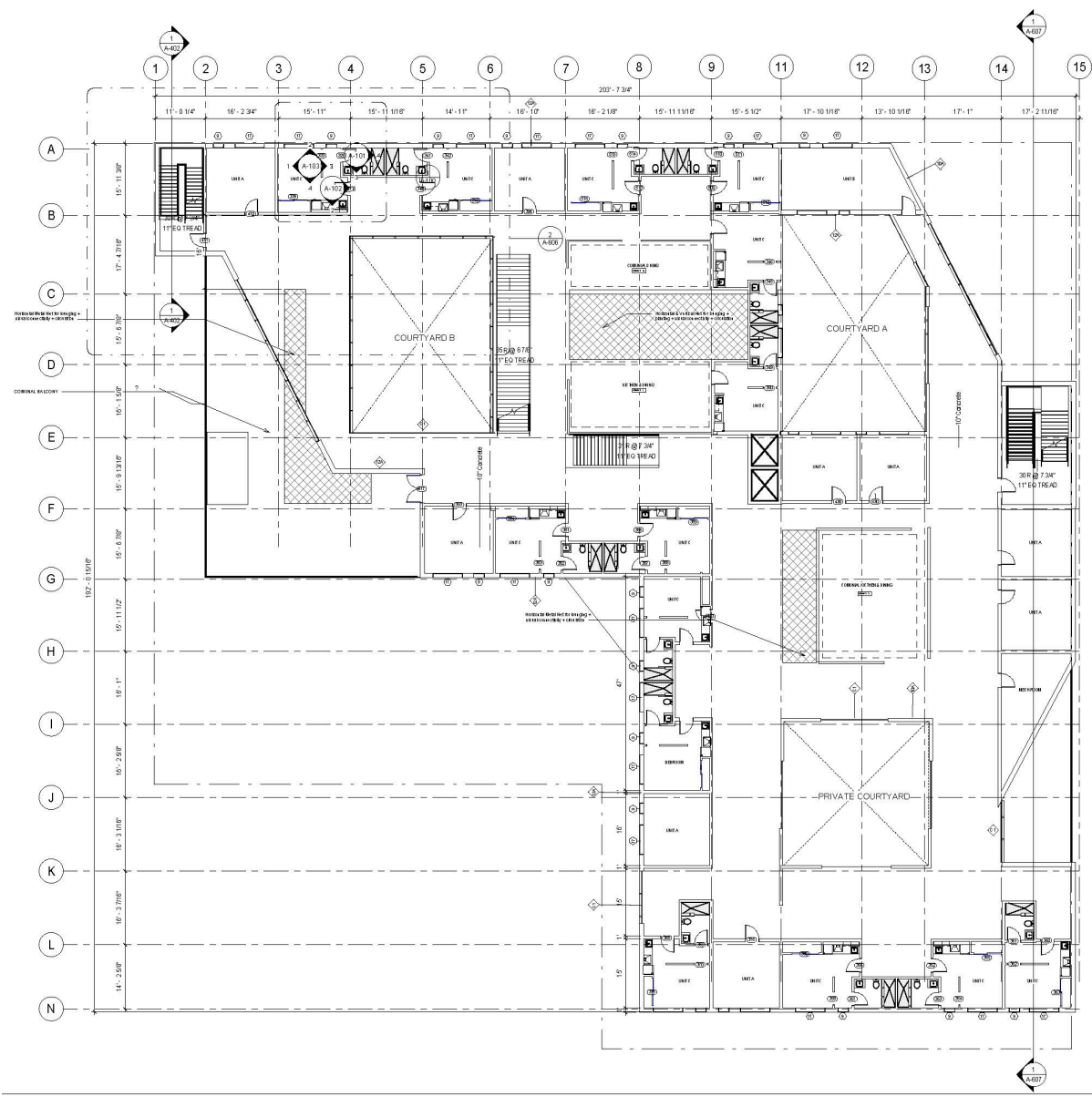
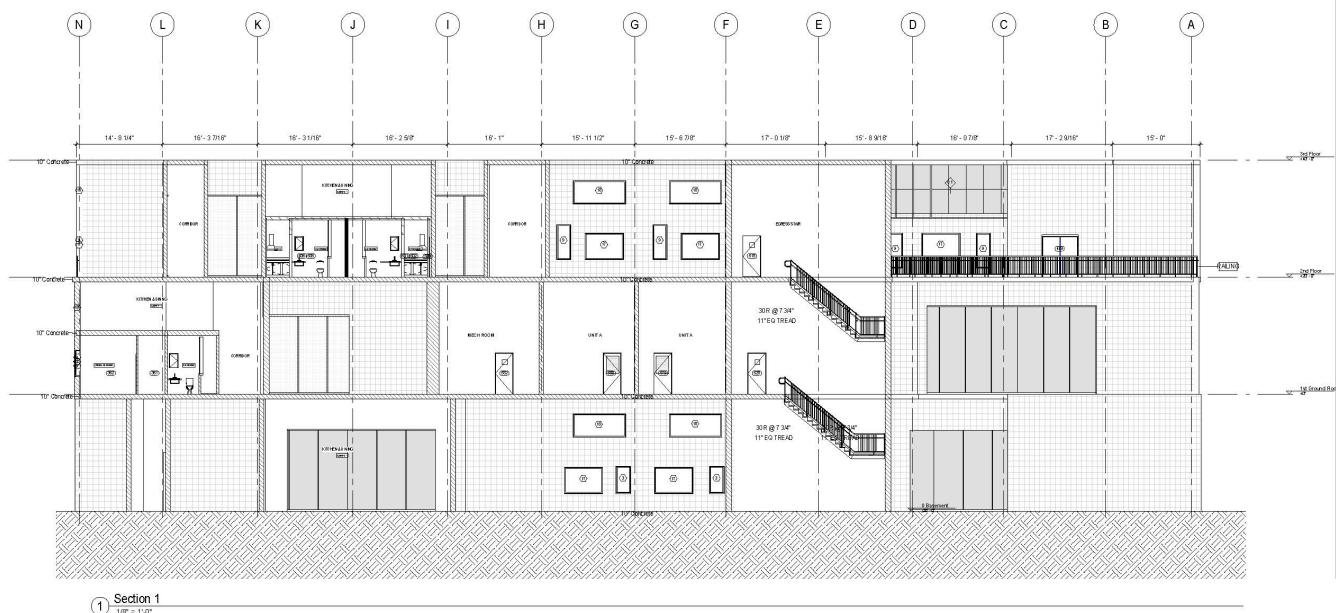
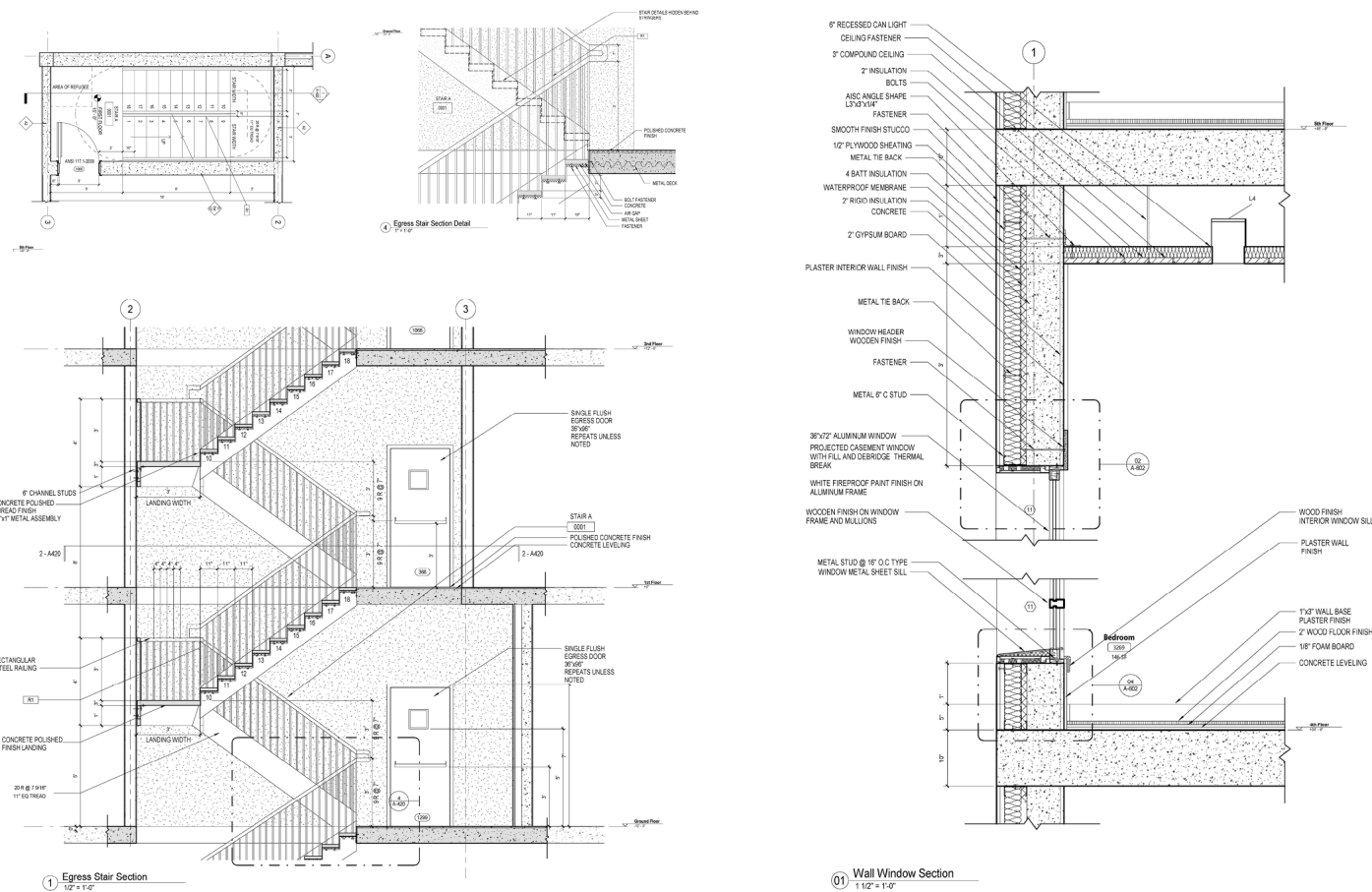
Archived Project

Program: Multifamily Housing

Location: Brooklyn, NY

Professional Practice - Construction Documents Individual Work

Taking our housing project, Construction Documents class focused on formalizing and detailing the elements in our design. Utilizing Revit and BIM software, we were exposed to facade, structure, and IVIEP consultants. We worked on drafting and annotating the drawings to correspond to the design, and also modeling and tagging wall and window types, furniture, and fixtures.



THE JUNCTION

Archived Project

400 Intermediate Design Honors Recognition

Program: Low Income Housing

Location: Washington Dc

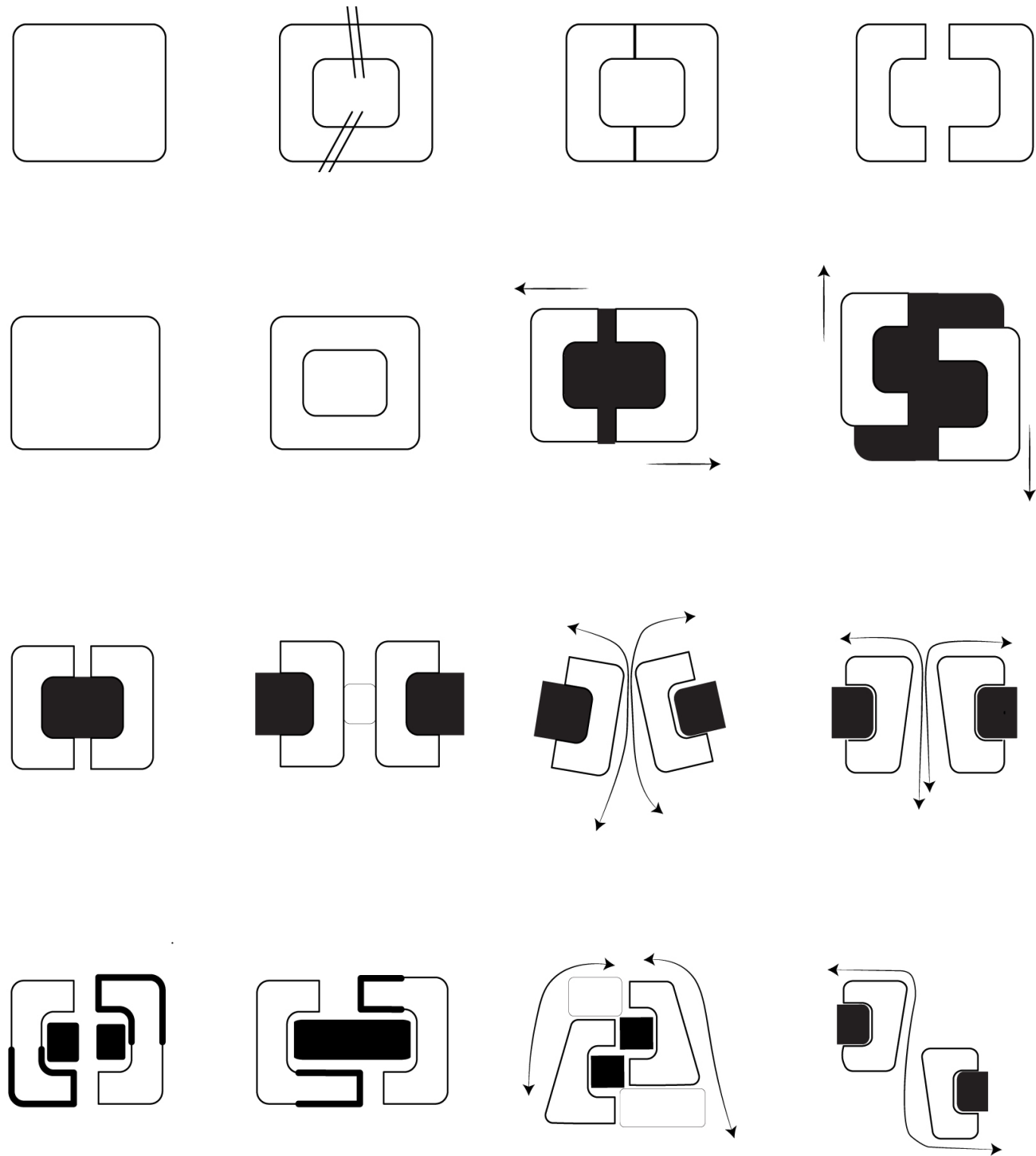
Design Critic: Dagmar Richer

Design 402 - Spring 2022

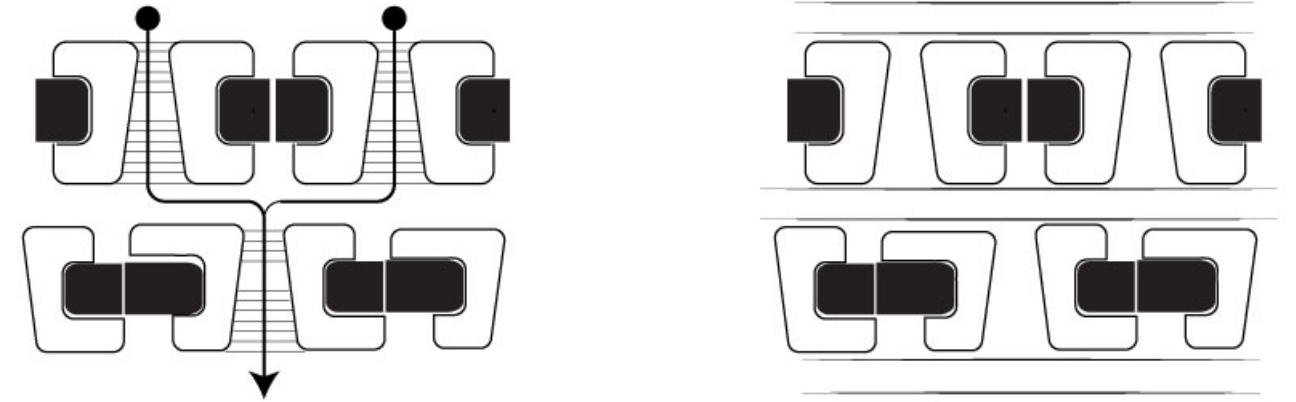
Located in Washington Dc, lying between two trails, this low-income housing project proposes to be a connector of pathways and people. Facing the challenge of designing a post-pandemic low-income project, for a fast paced society, a site selection that was "well connected" and "innovative" was crucial. The capital crescent trail, which is the main trail in front of the project, runs 184.5 miles along the Potomac River, where visitors can walk, run, bike the distance between Georgetown and Cumberland, MD. Canal Trail, on the other side of the site, is a much slower-paced dirt stone path that runs along the C&O Canal. The project's initial idea was to take advantage of this exciting site condition and use it in the design's favor. The project emphasizes connecting the two pathways while being respectful of the environment and the users. Thus the design was meant to be soothing to its environment, and efficient at the same time.



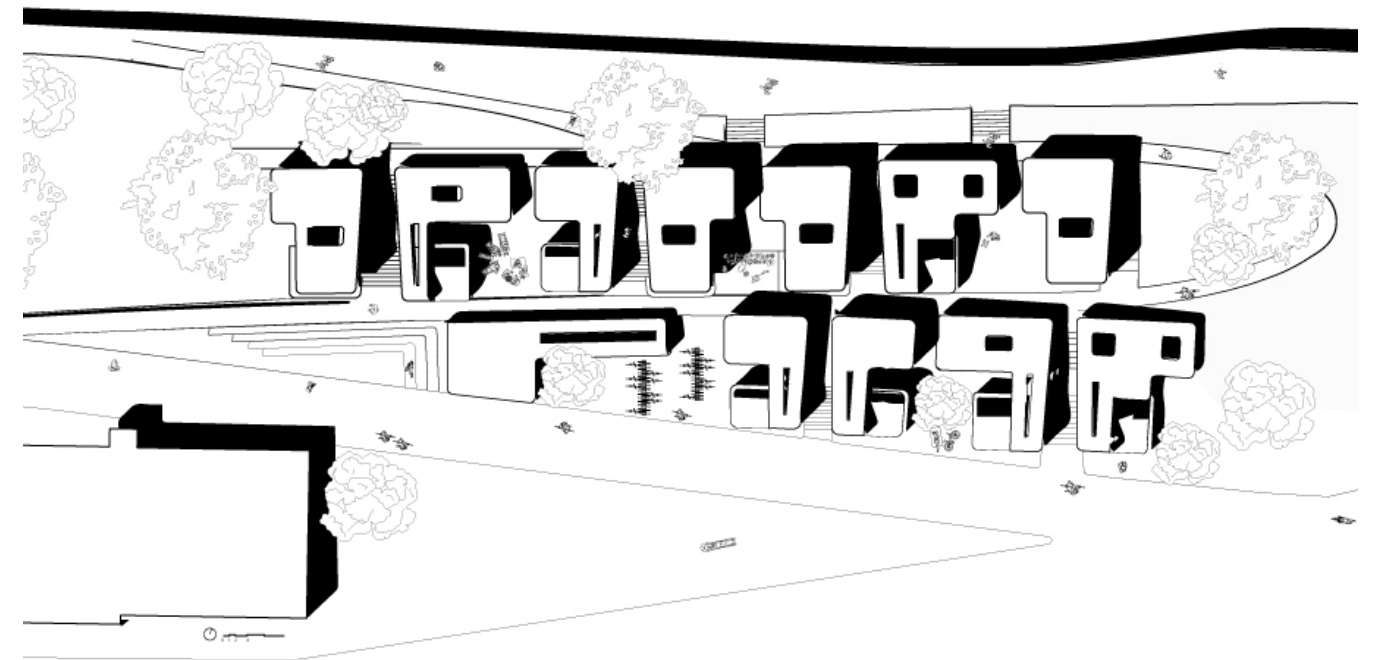
FORM DIAGRAMS



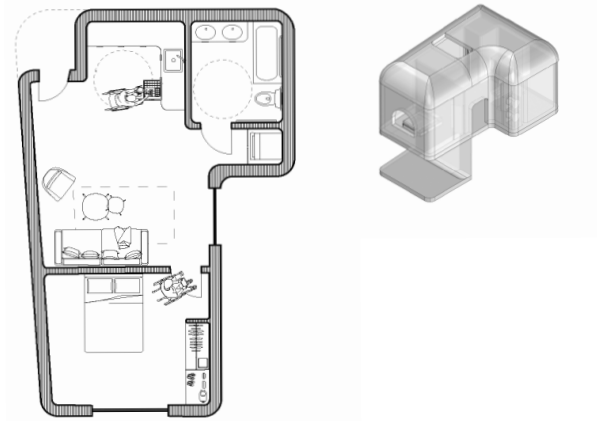
UNIT PLACEMENT



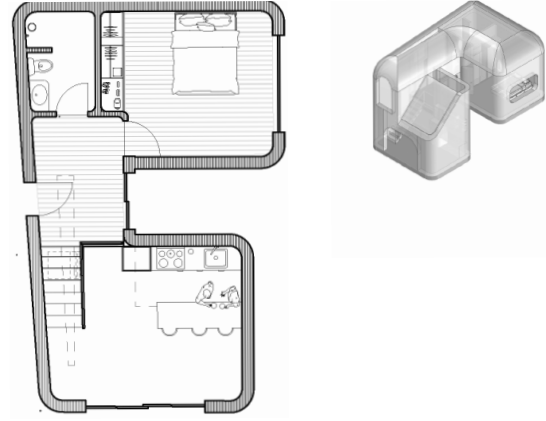
SITE PLAN



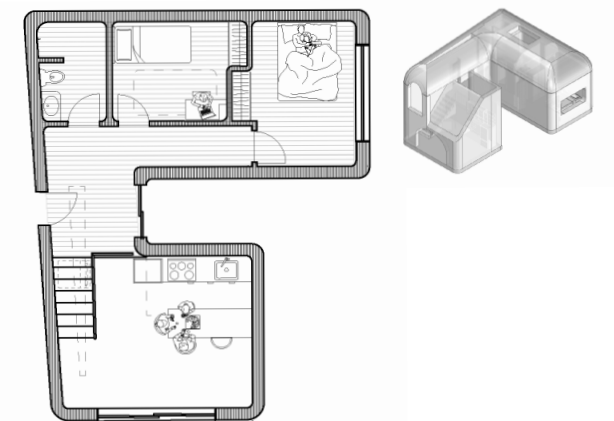
ELDERLY UNIT



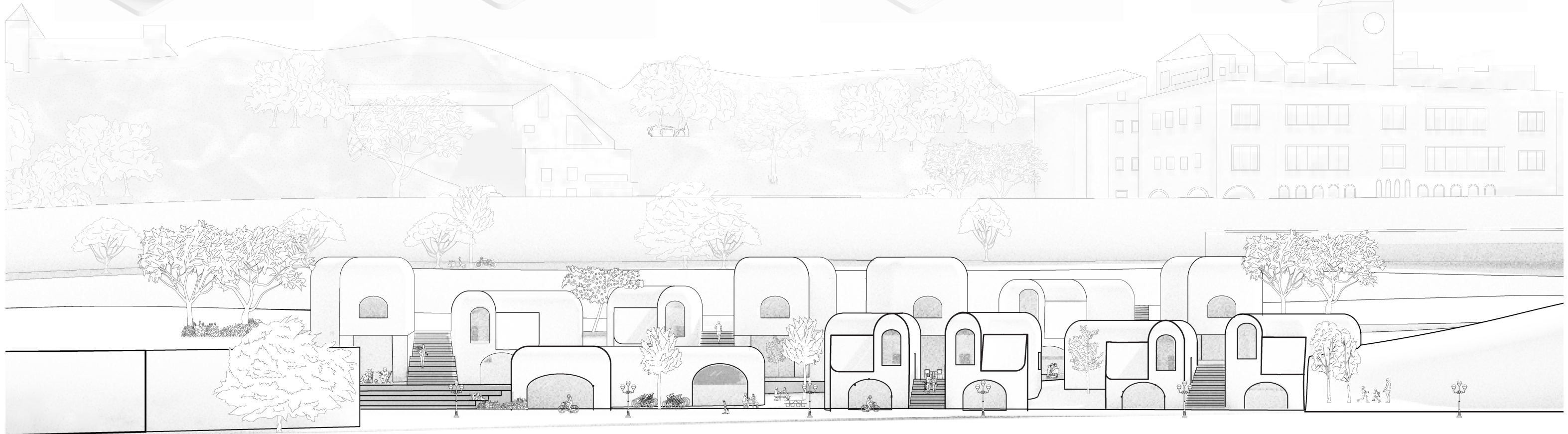
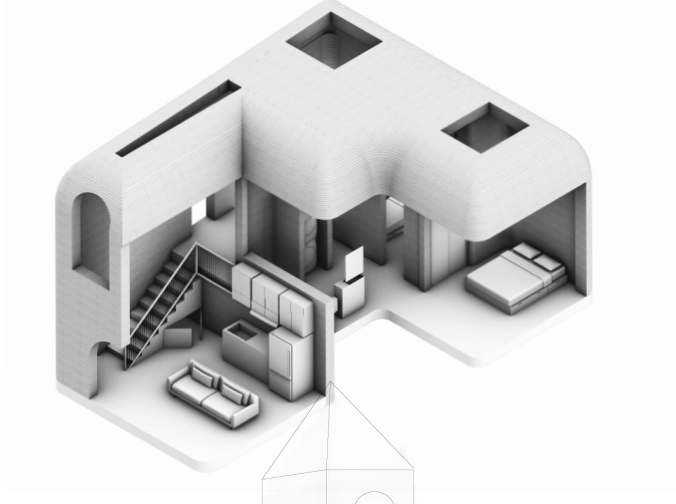
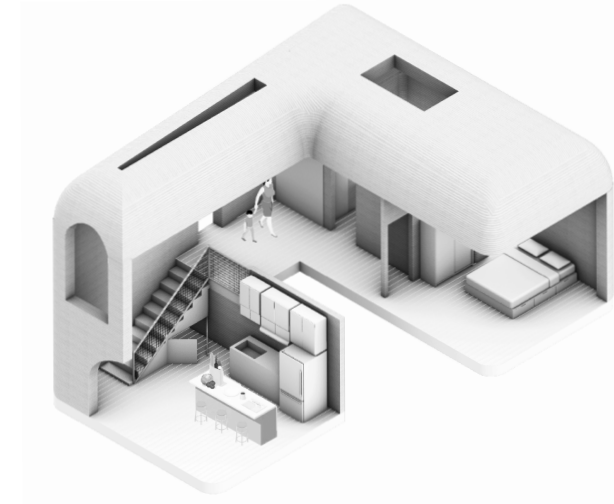
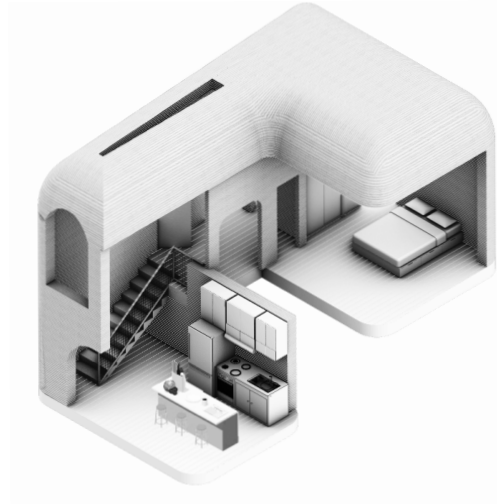
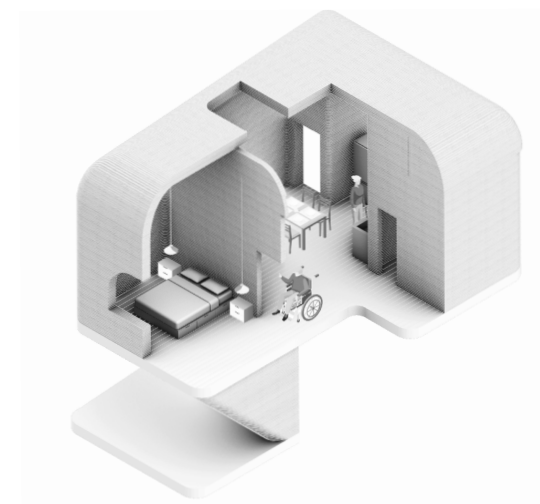
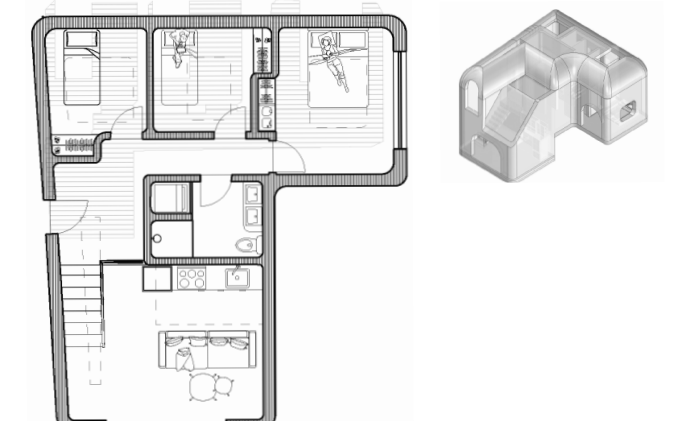
SINGLE UNIT

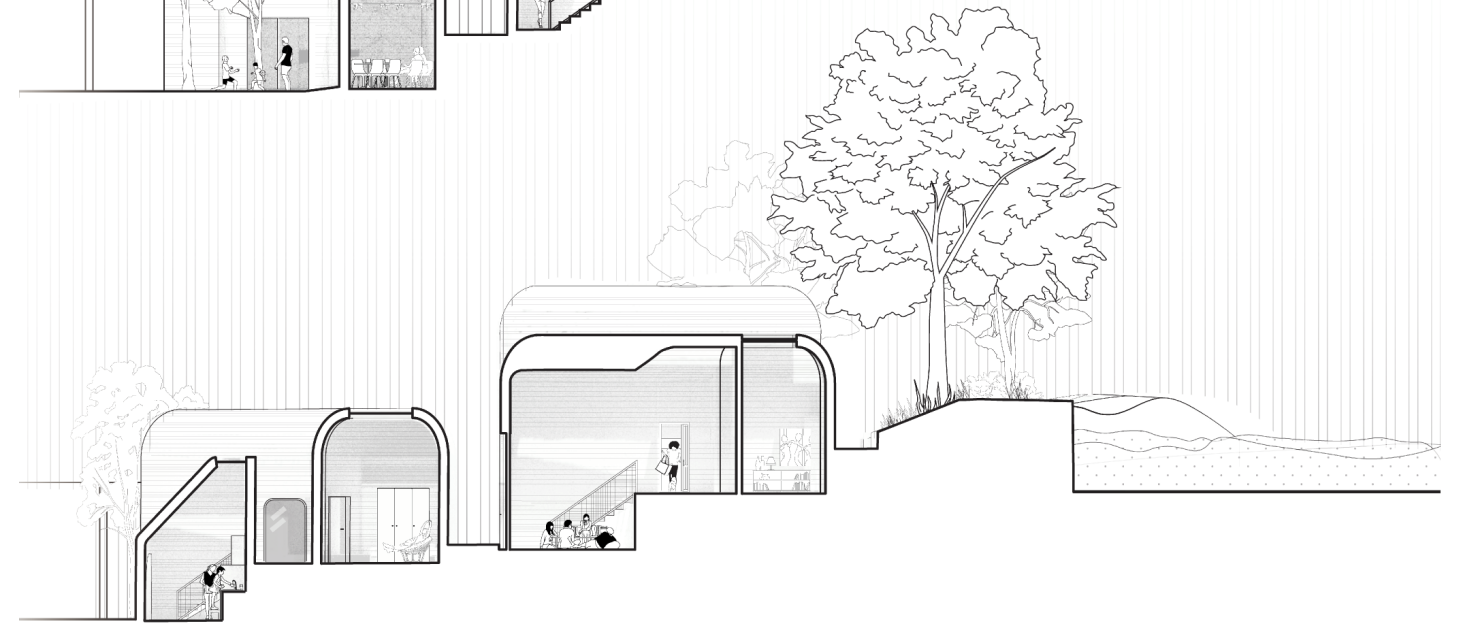
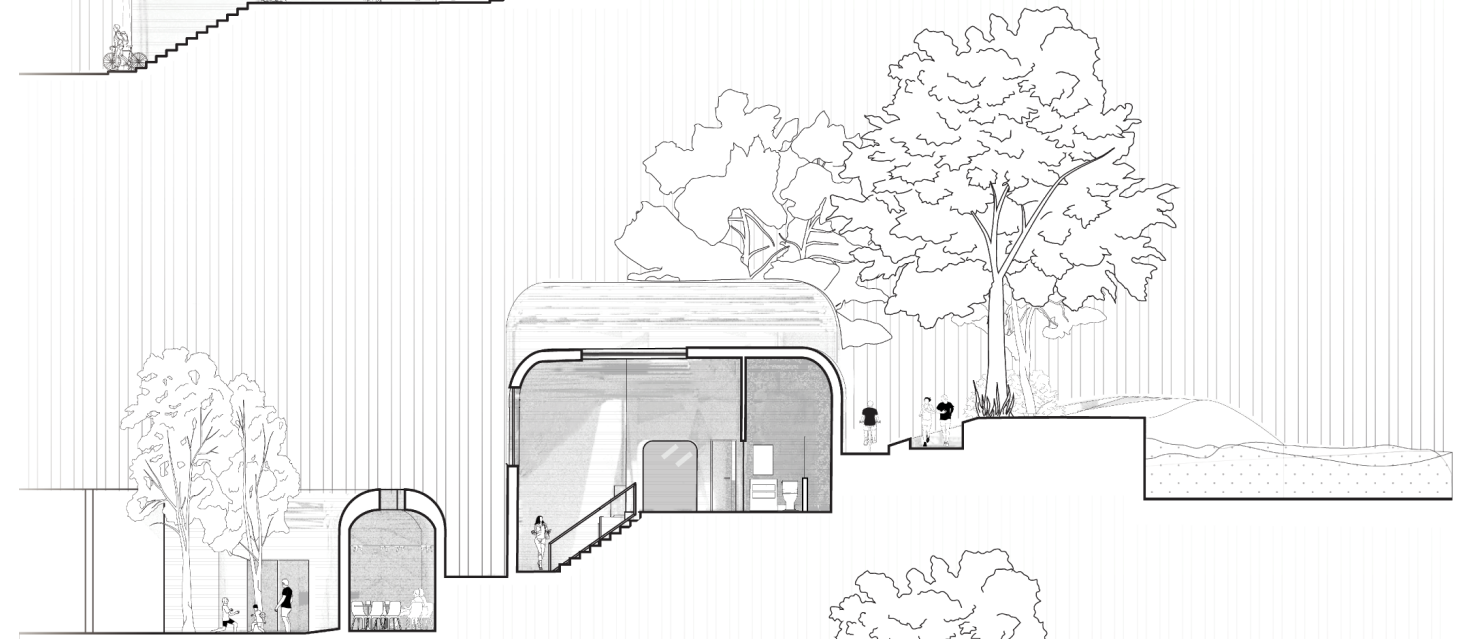
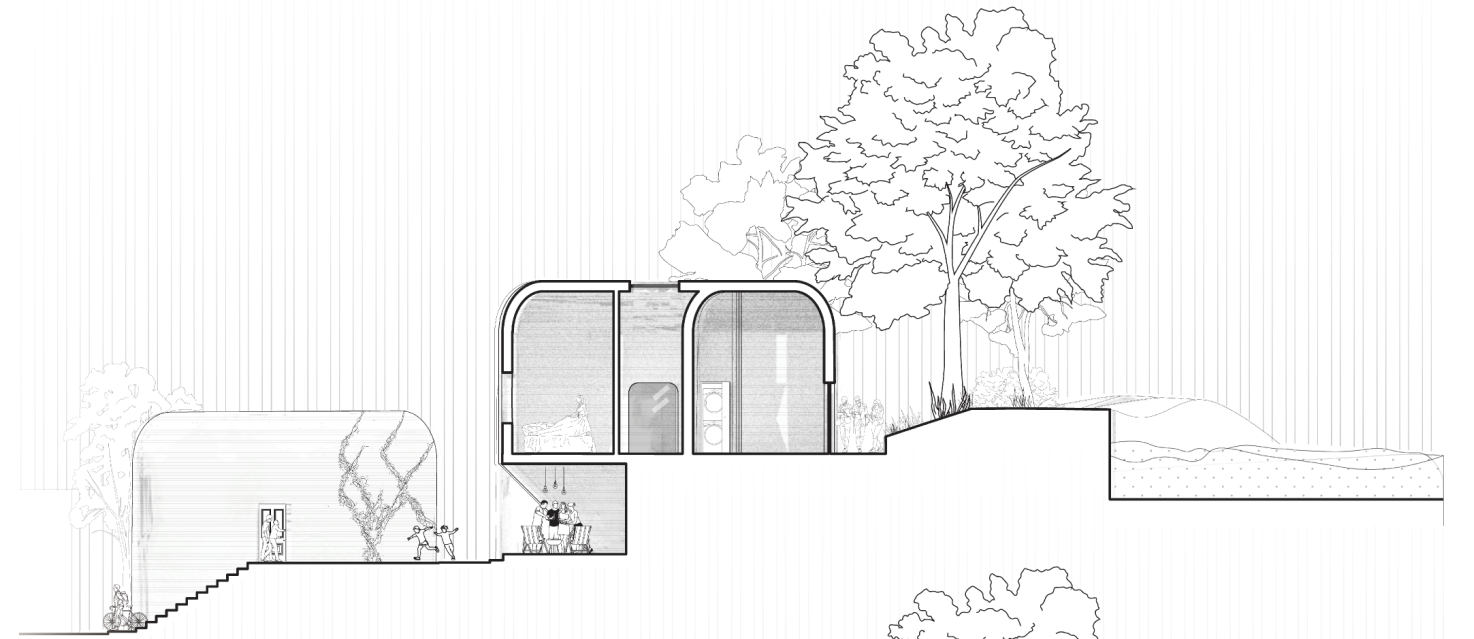
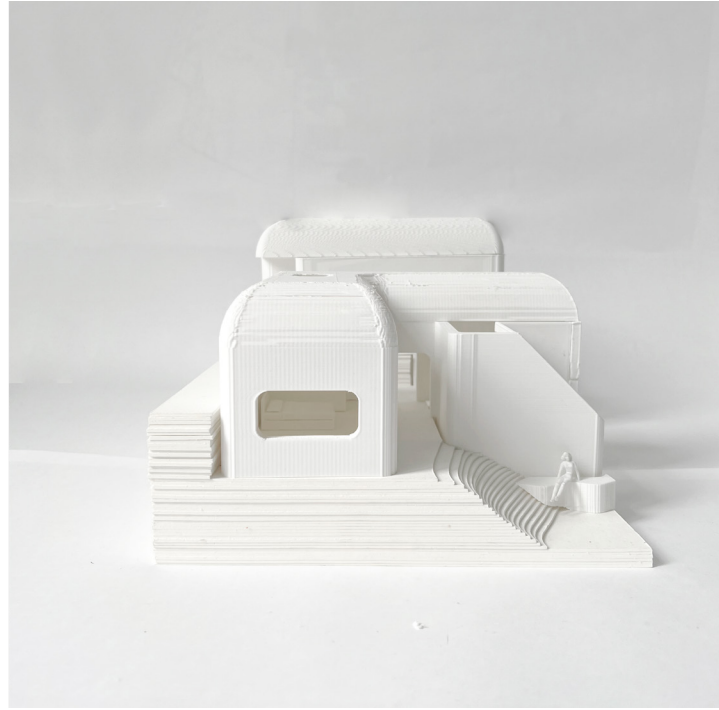


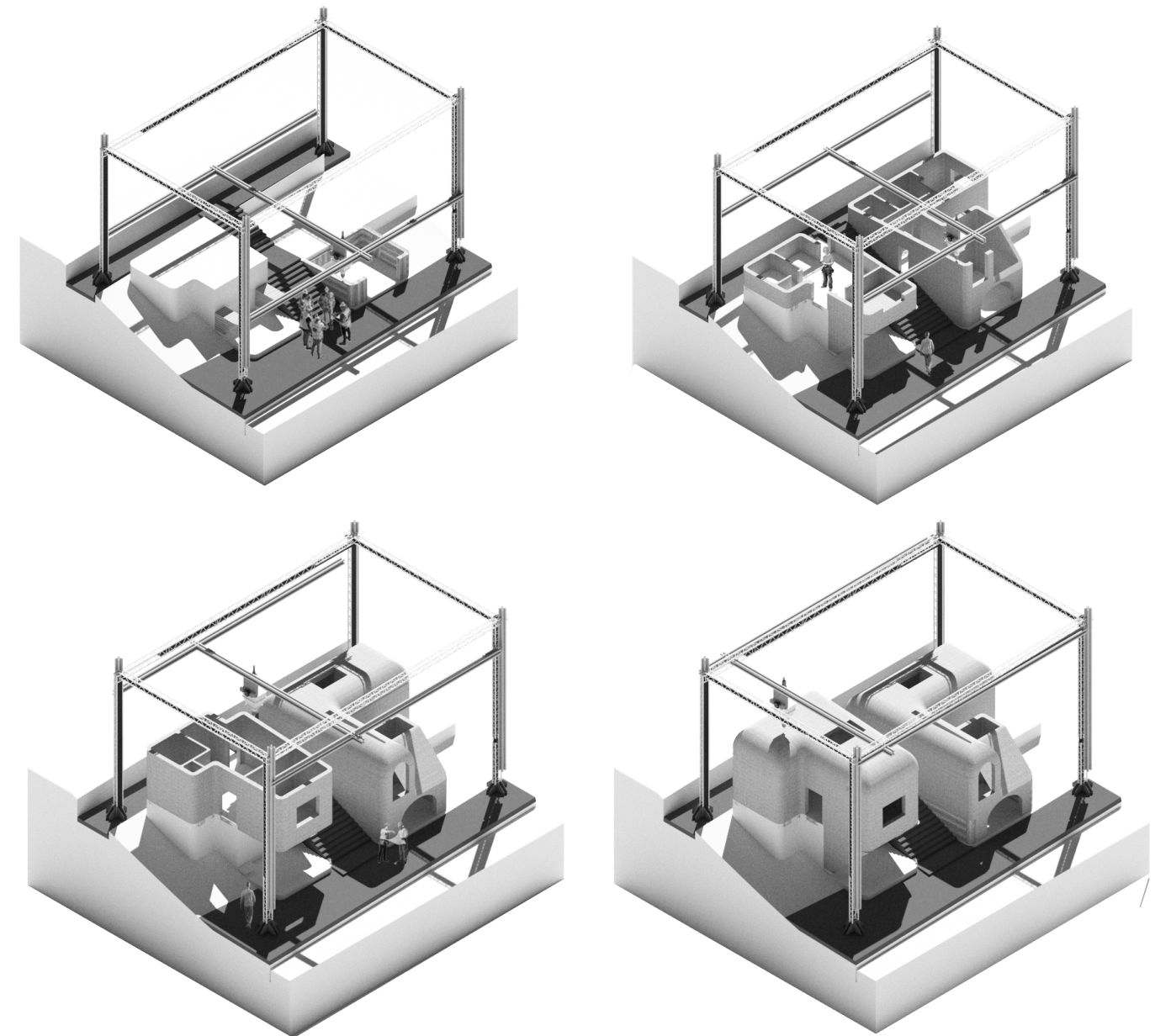
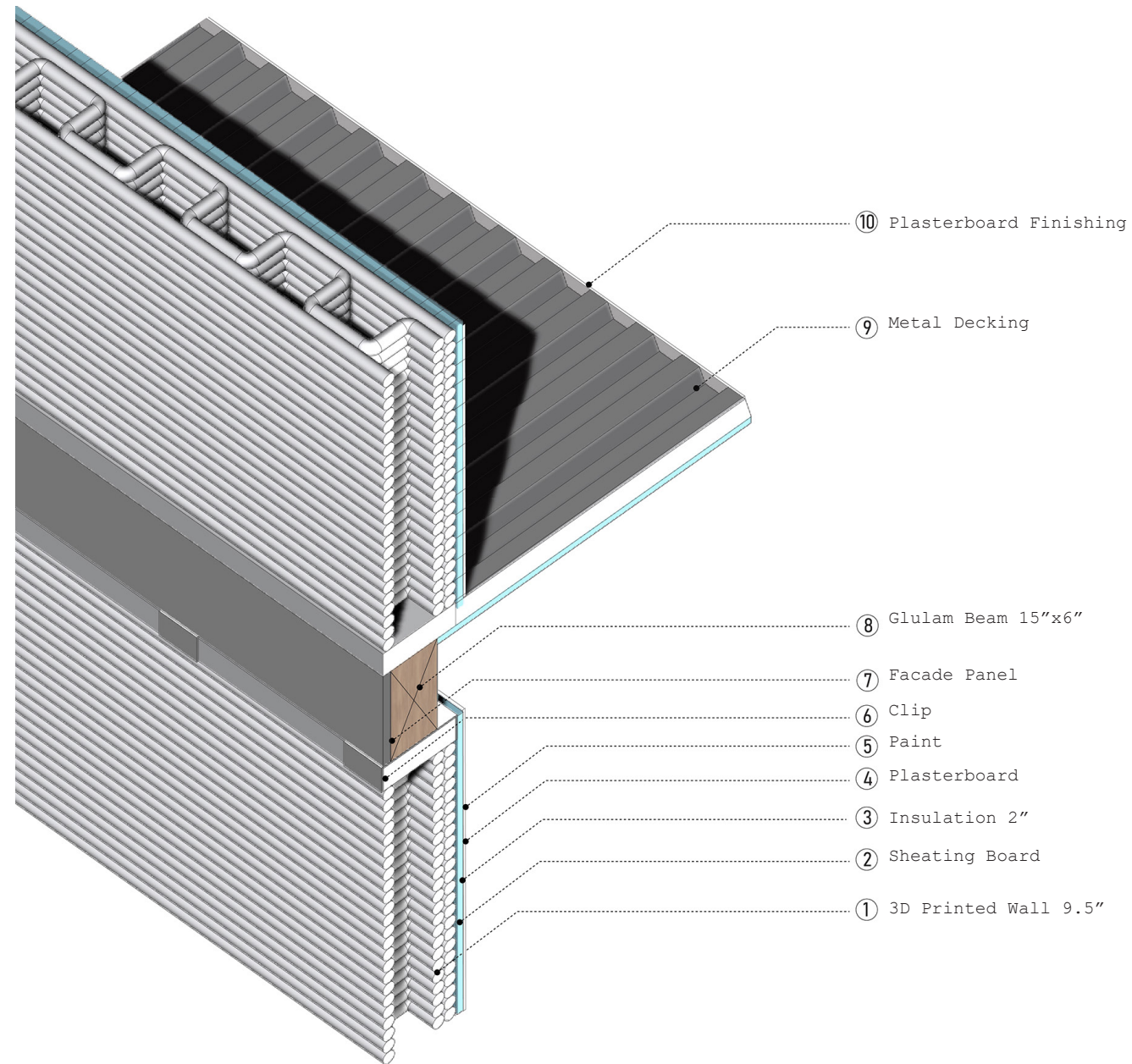
FAMILY X3



FAMILY X4







ARTS & CRAFTS CENTER

400 Intermediate Design

Program: Community Center

Location: Husdon Square

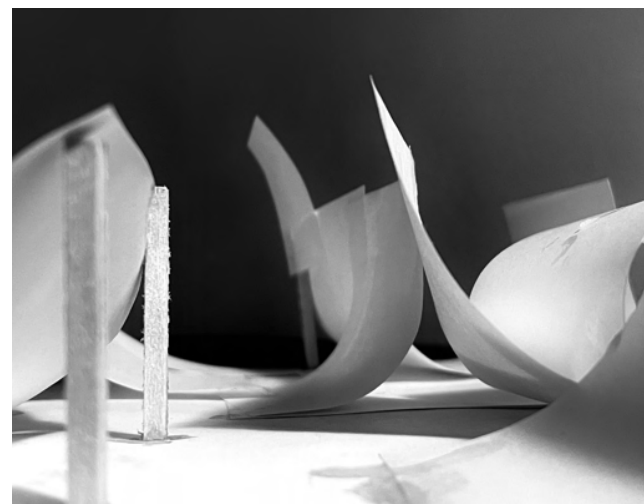
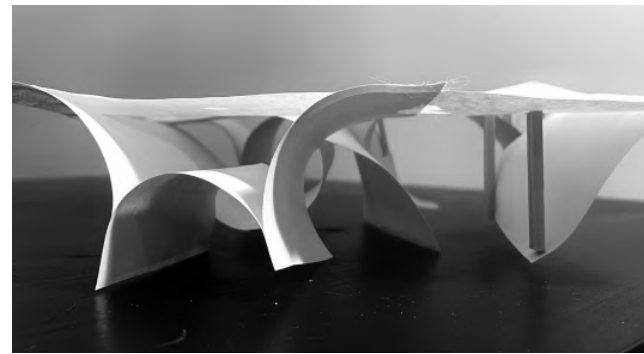
Design Critic: Dragana Zoric

Design 401 - Fall 2022

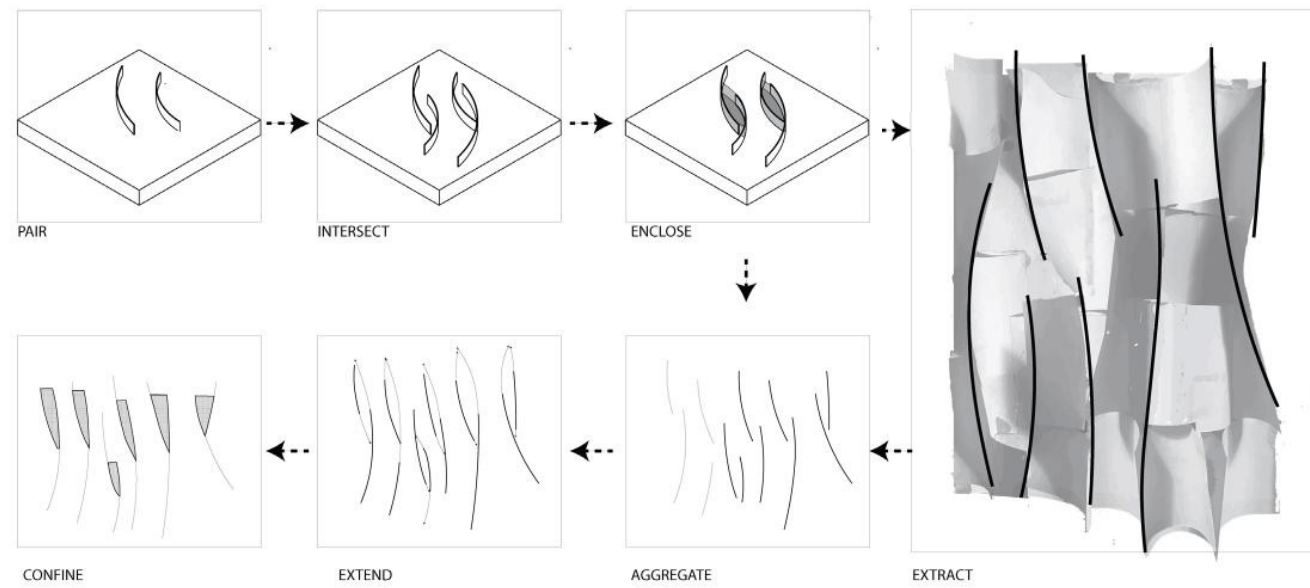
This community center is located in the Rockaways, a neighborhood that is vulnerable to flooding. The project aims to bring the art scene back to the community by creating a center that capitalizes on recycling and arts & crafts. Public art is exploited on as a strategy to provide a platform for tenants to effectively become present, visible, and audible. The center also operates as an emergency shelter during extreme weather conditions. The form acts as a vast duct, shaping public spaces that contain the possibility of various events like providing a connection between the city and the beach, becoming a social meeting point, redirecting floodwater



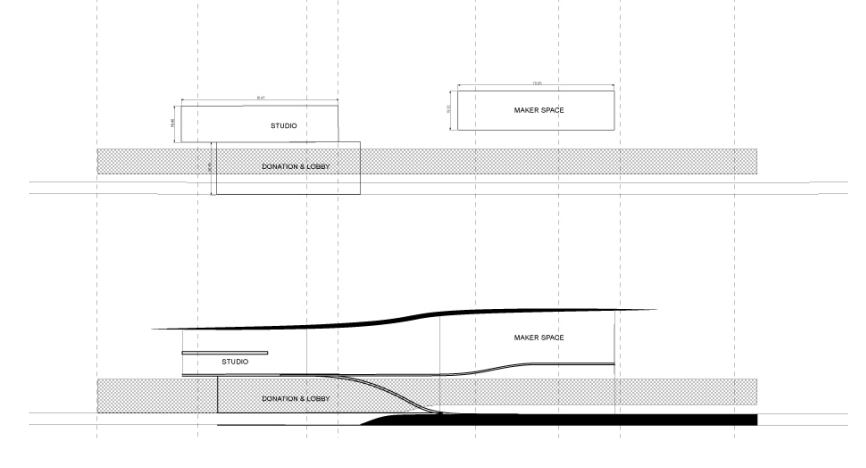
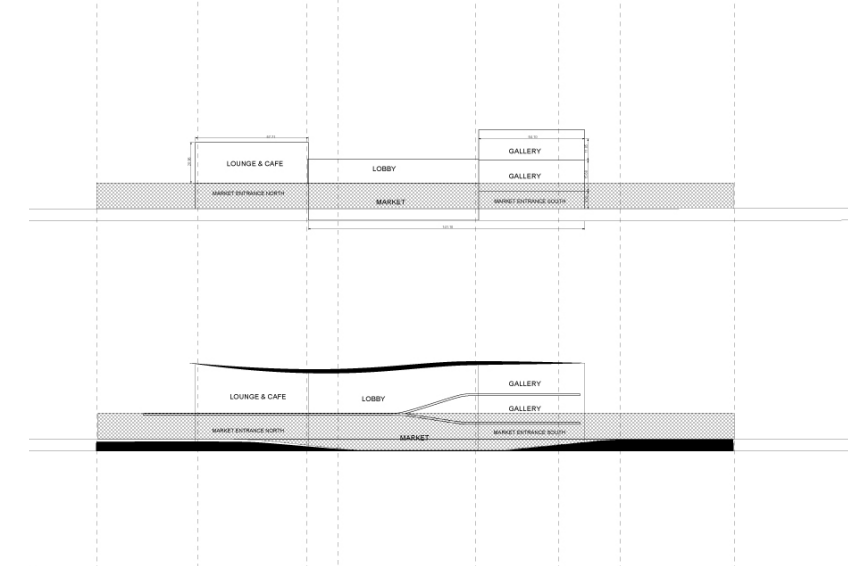
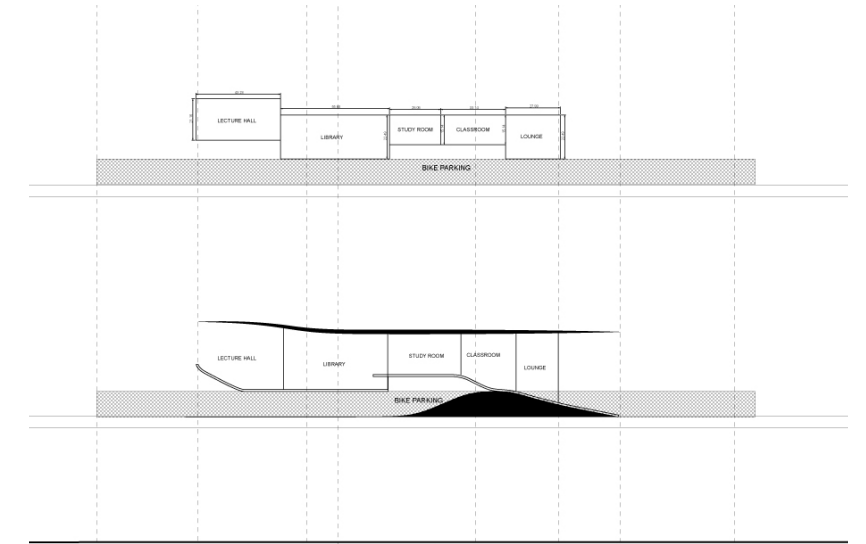
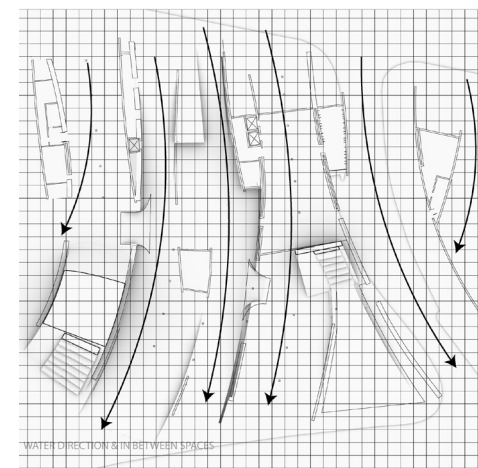
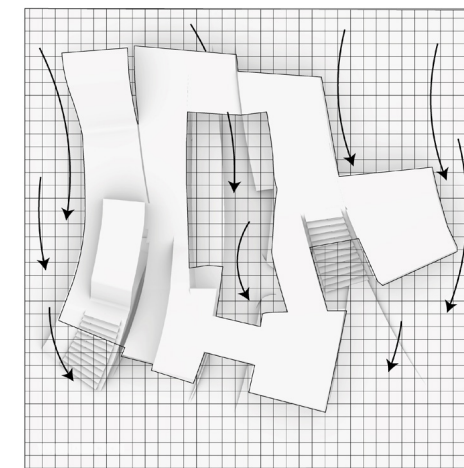
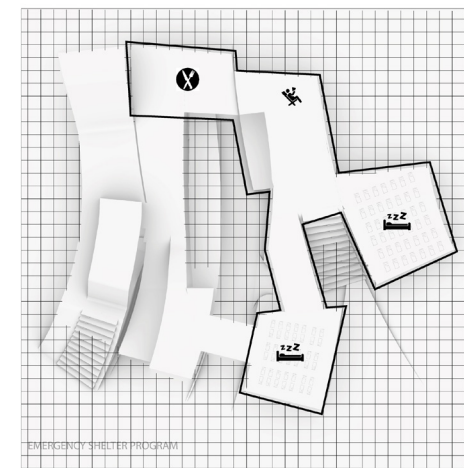
SKETCH MODEL ROOF STUDY



WALL DIAGRAMS

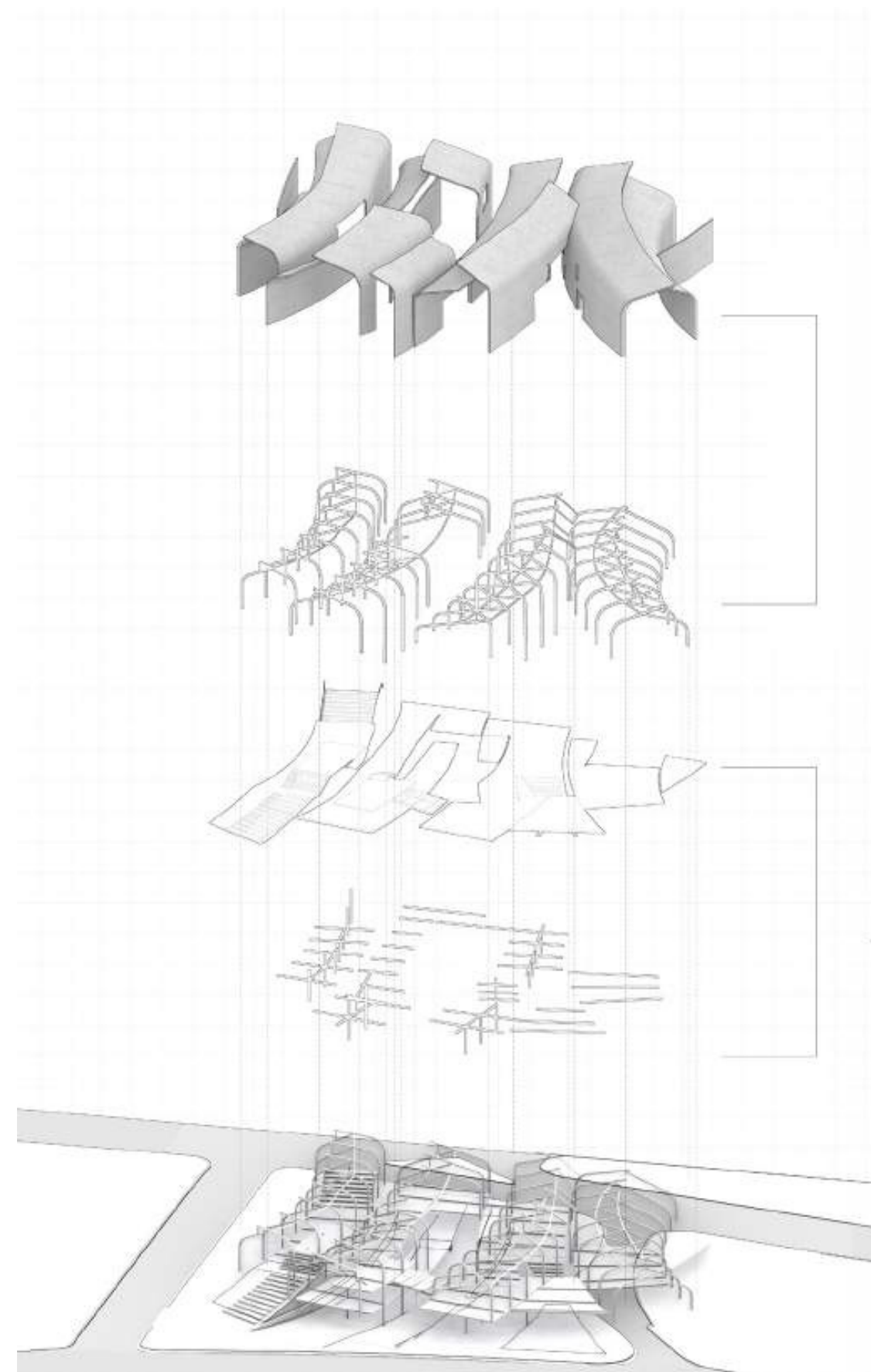
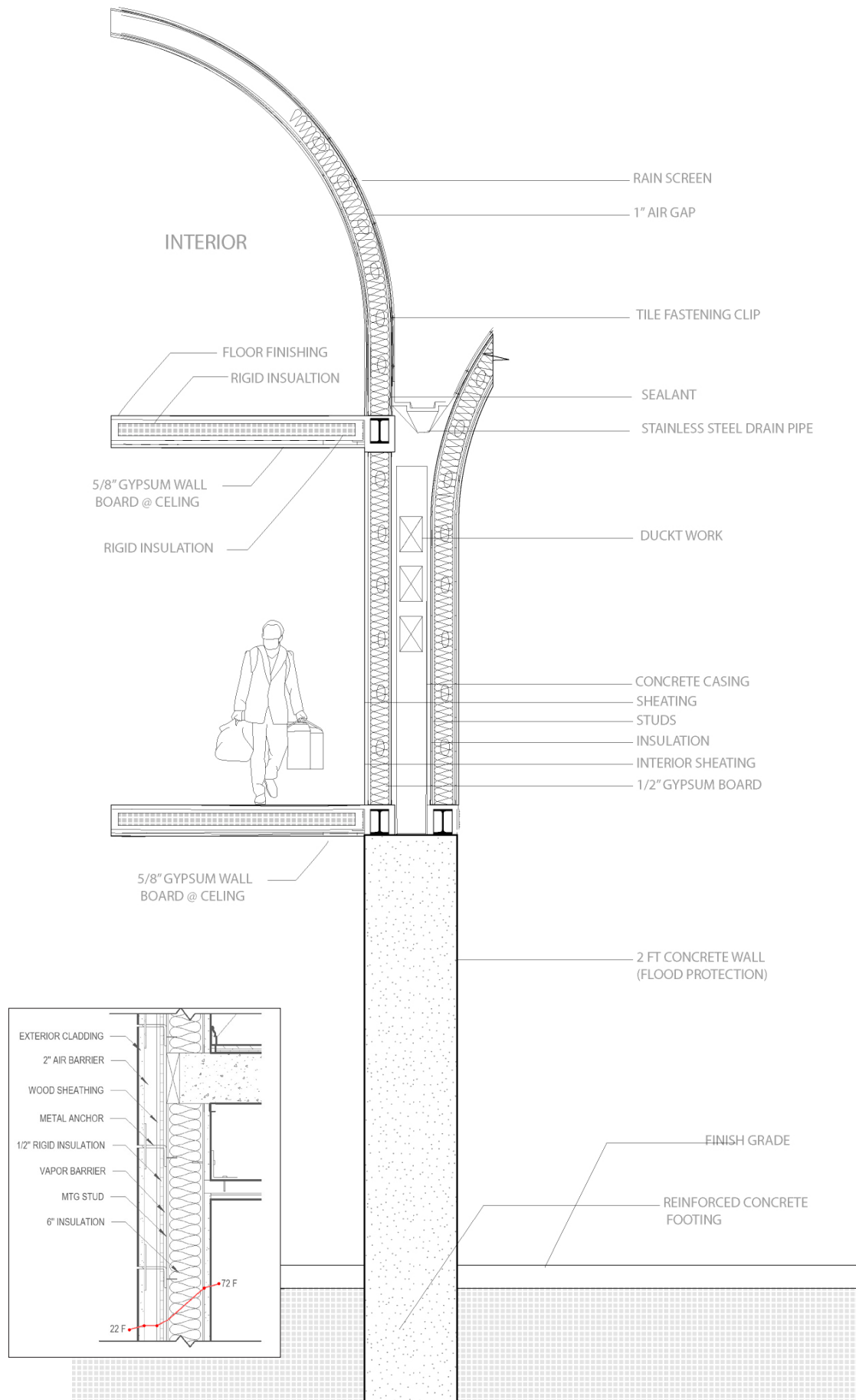


FLOOD DIAGRAMS

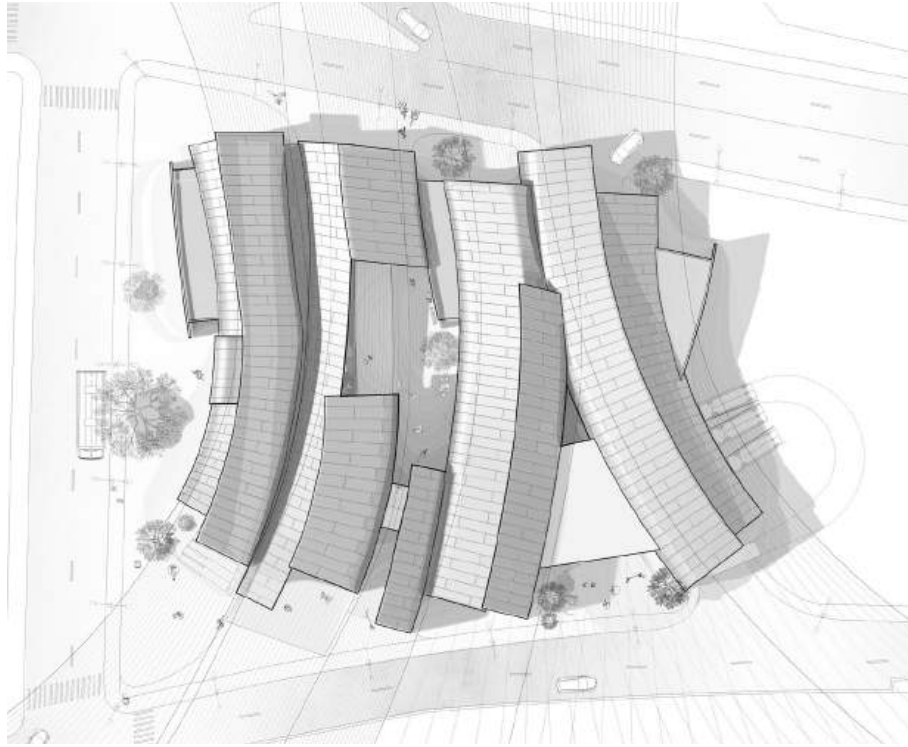


WALL DETAIL

ROOF/STRUCTURE DIAGRAM



ROOF PLAN



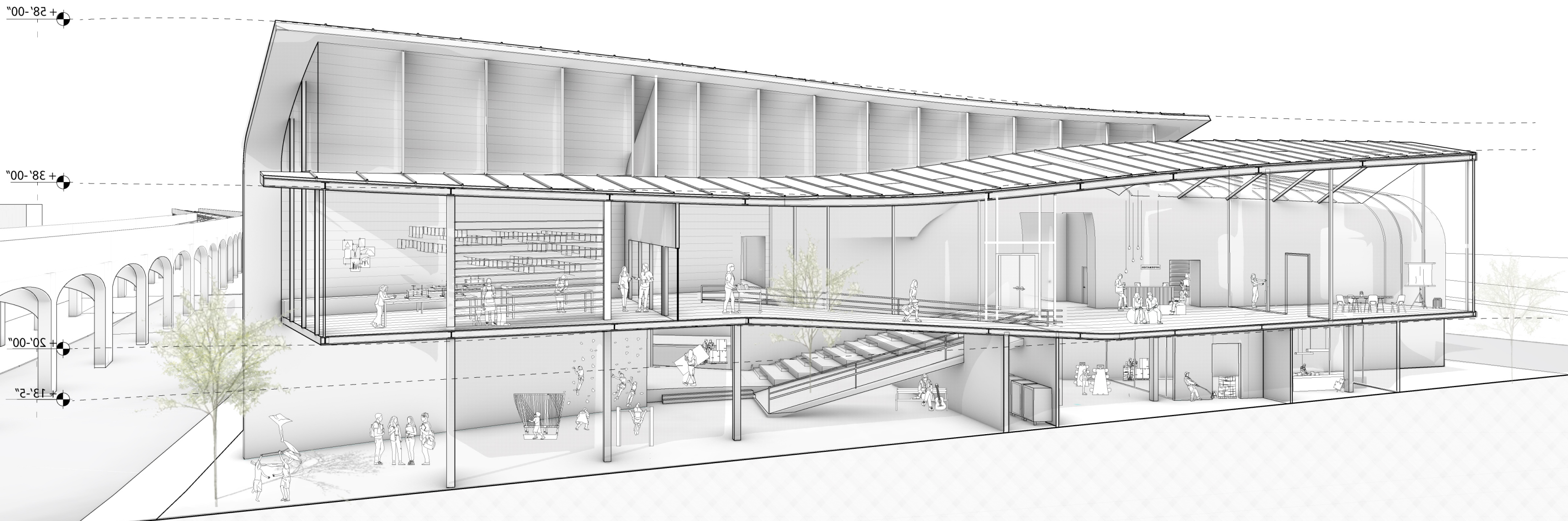
GROUND PLAN



FRIST FLOOR PLAN



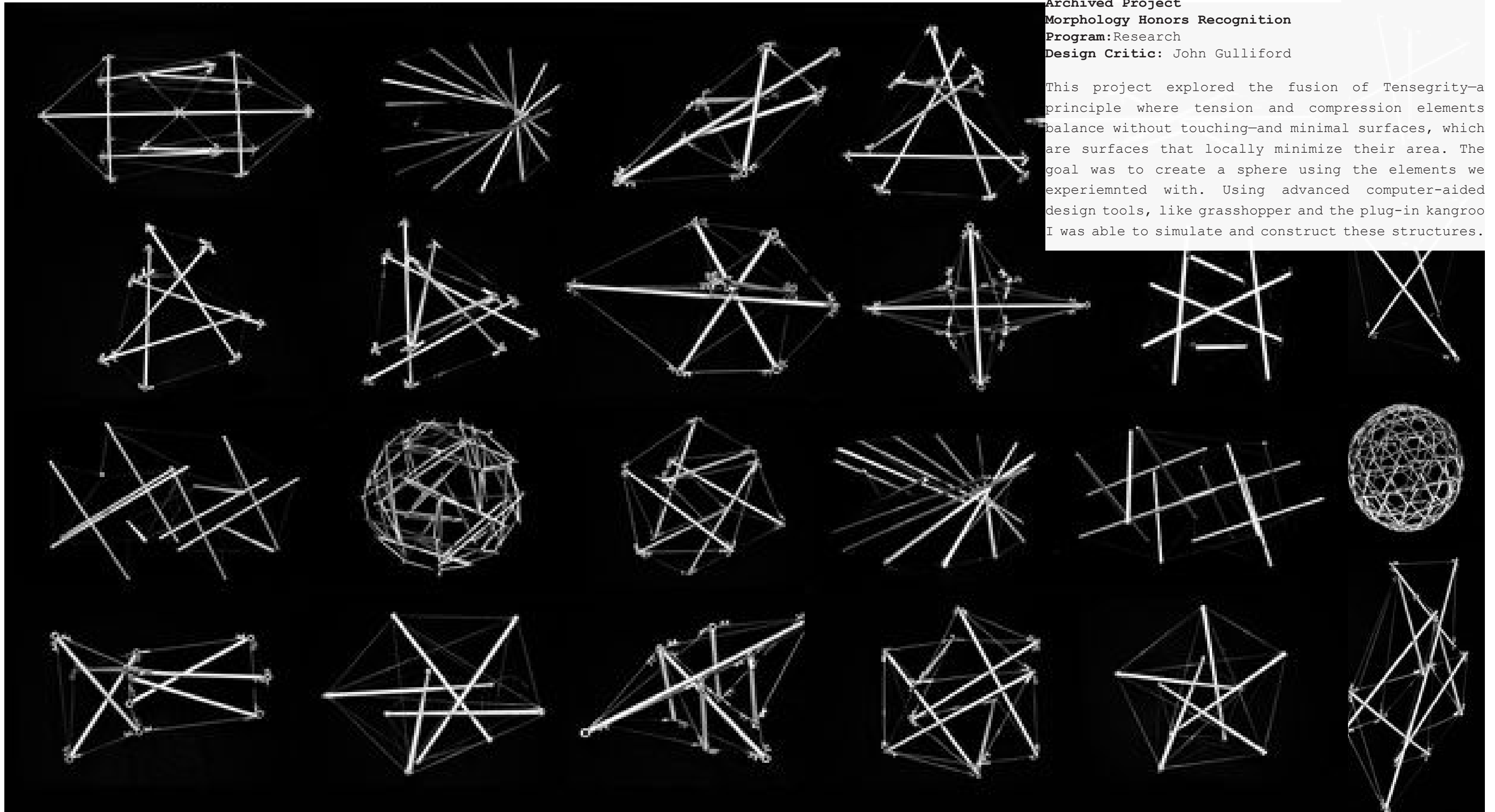
SECTION

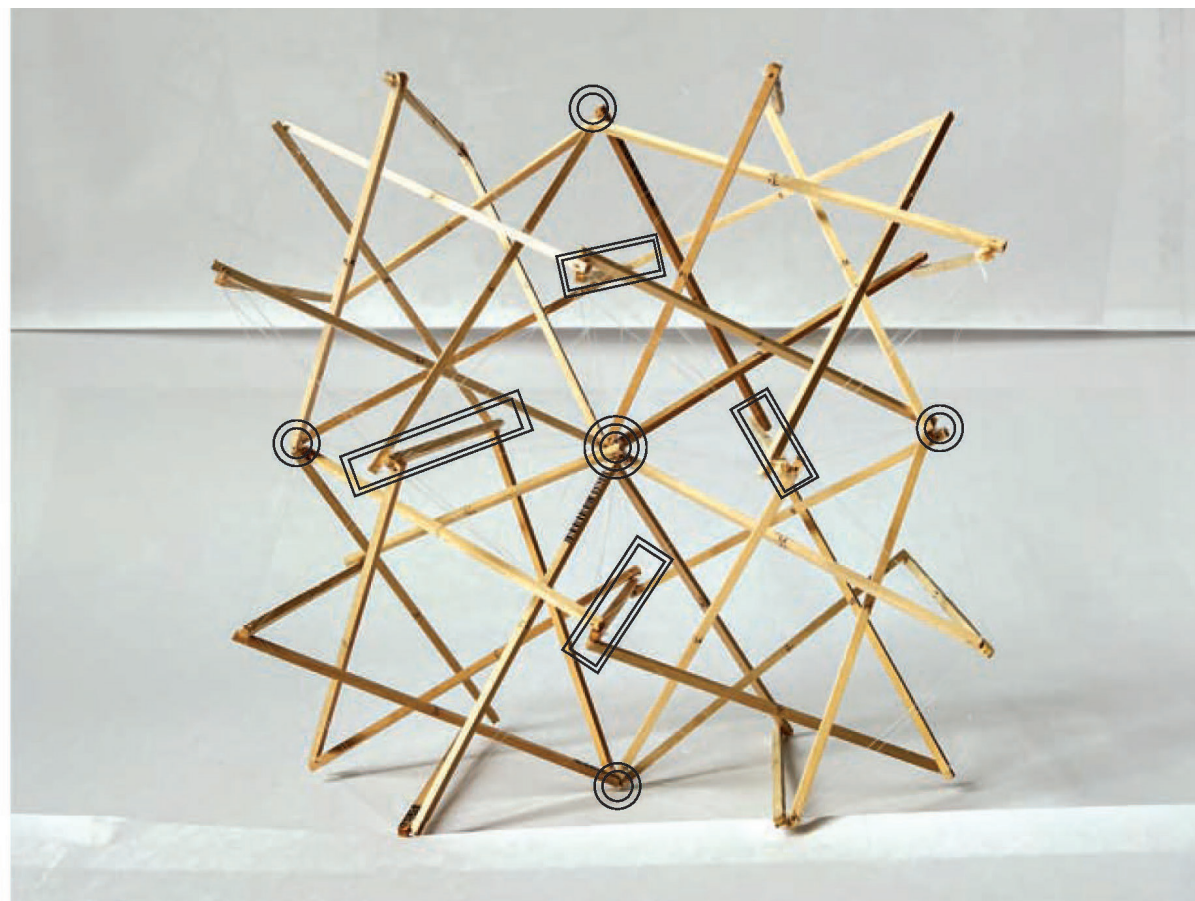
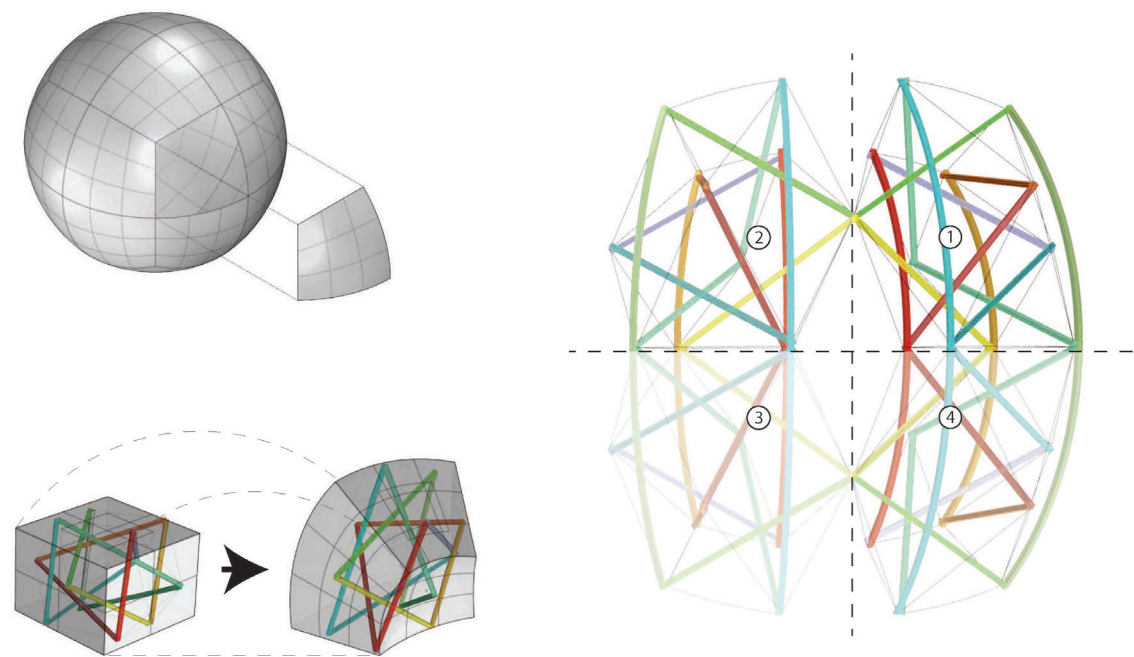
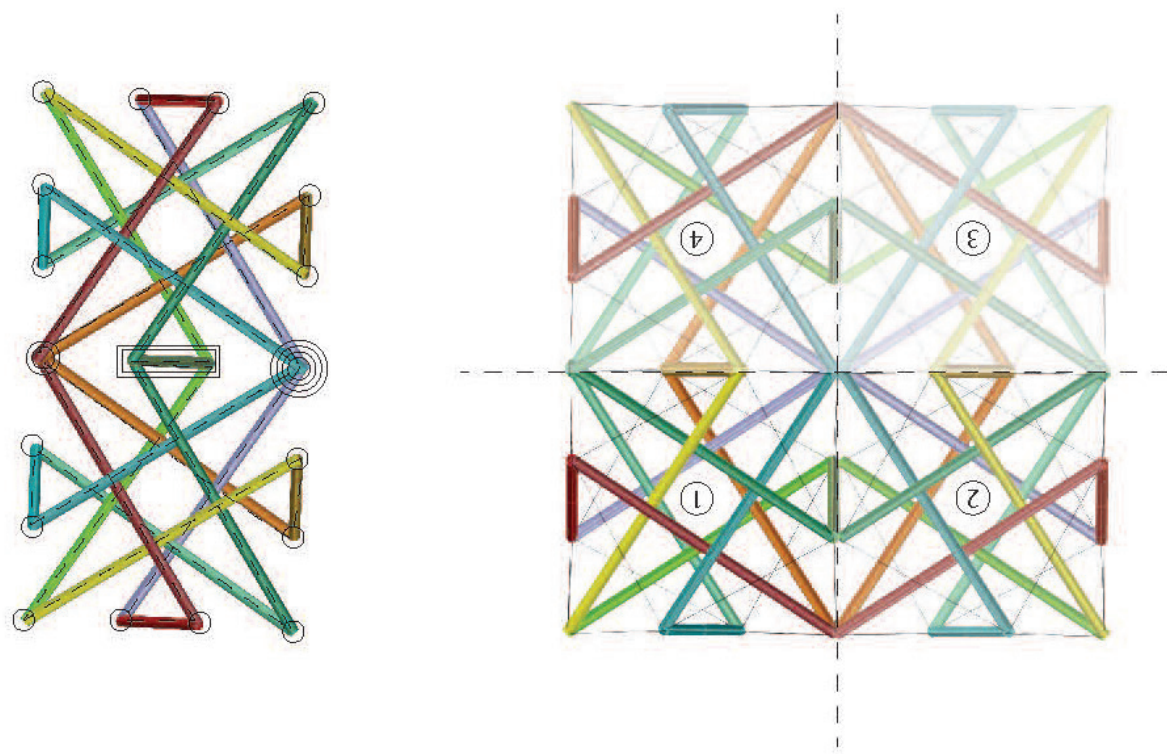


FORM & FORCE

Archived Project
Morphology Honors Recognition
Program: Research
Design Critic: John Gulliford

This project explored the fusion of Tensegrity—a principle where tension and compression elements balance without touching—and minimal surfaces, which are surfaces that locally minimize their area. The goal was to create a sphere using the elements we experimented with. Using advanced computer-aided design tools, like grasshopper and the plug-in kangaroo, I was able to simulate and construct these structures.





BORDU HOUSE

Professional Work - BUILT

Program: Weekend house

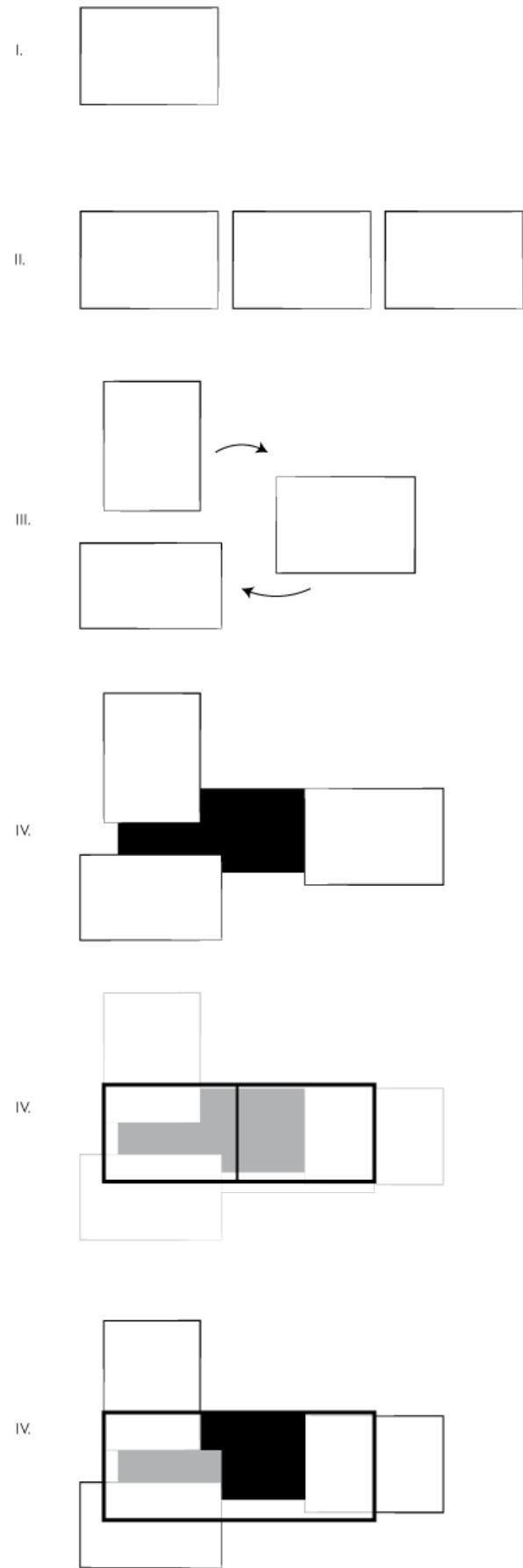
Location: Marmaris, Bordubet

2020 SUMMER - 2021 SPRING

This family home is located in the charming village of Bordubet and is a stunning example of a pre-fabricated steel-framed building, assembled in just one week. The design of the house represents a family of five, with a focus on creating a space that seamlessly blends into the breathtaking landscape surrounding it. The ambition of this project was to create a house that perfectly complemented its surroundings, without overshadowing the natural beauty of the area.



OPERATIONS



GENERIC "RECTANGLE"

MULTIPLY

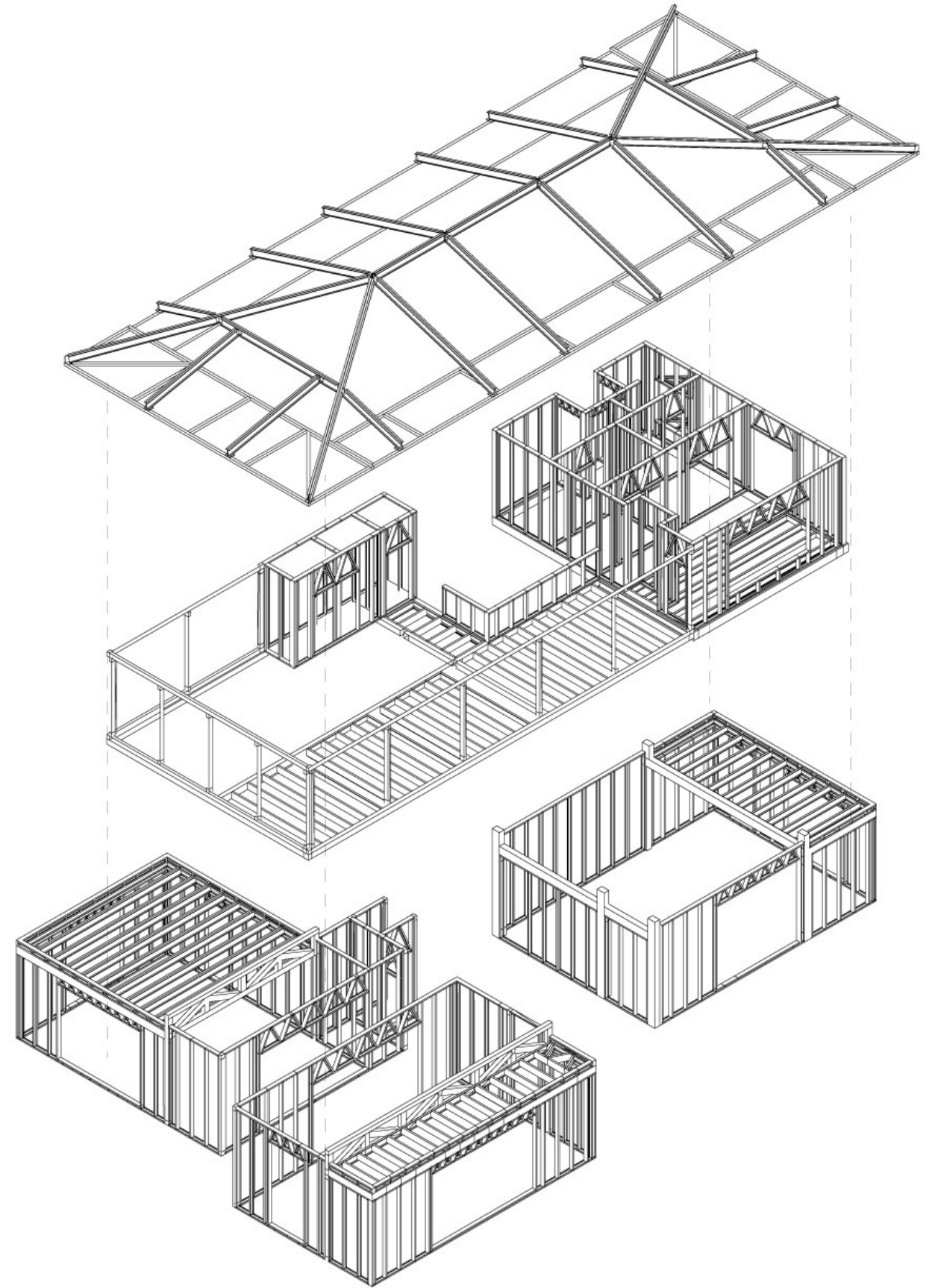
REARRANGE

CONNECT

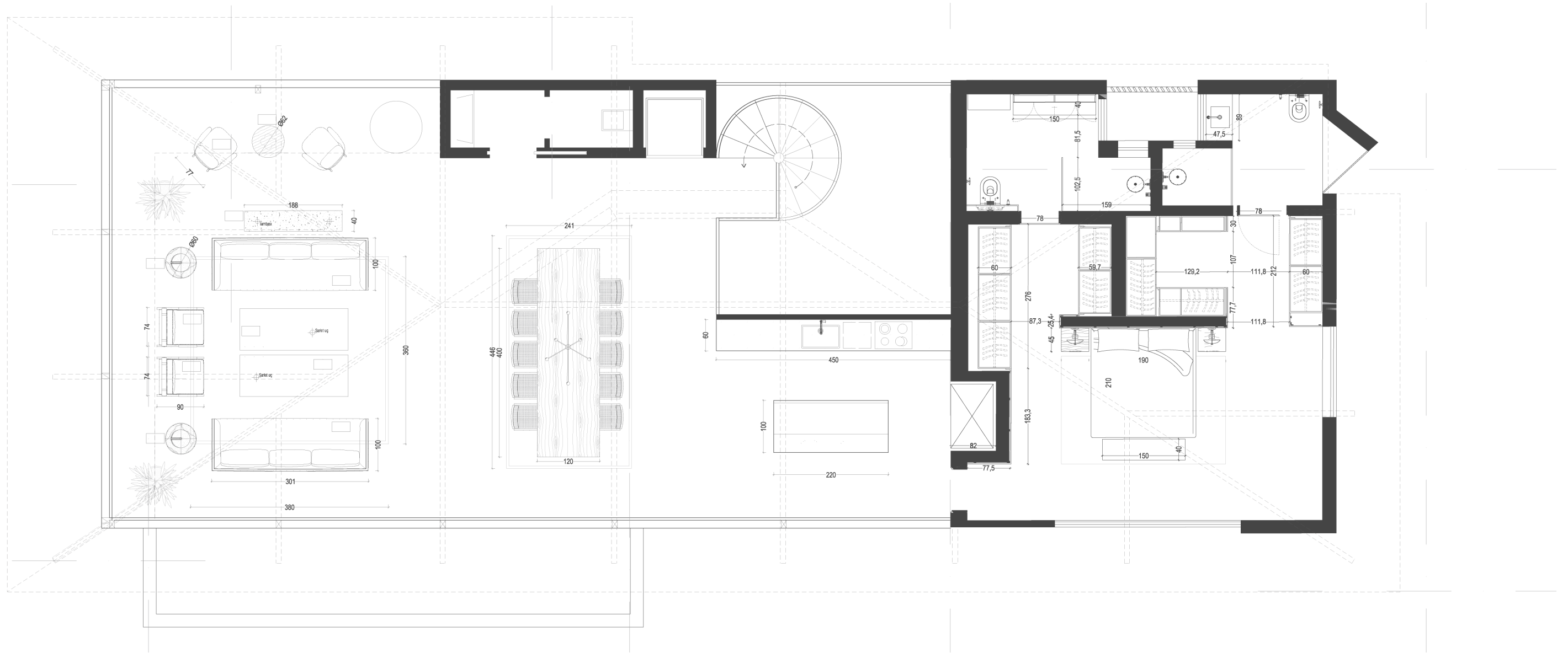
OVERLAY

CONNECT

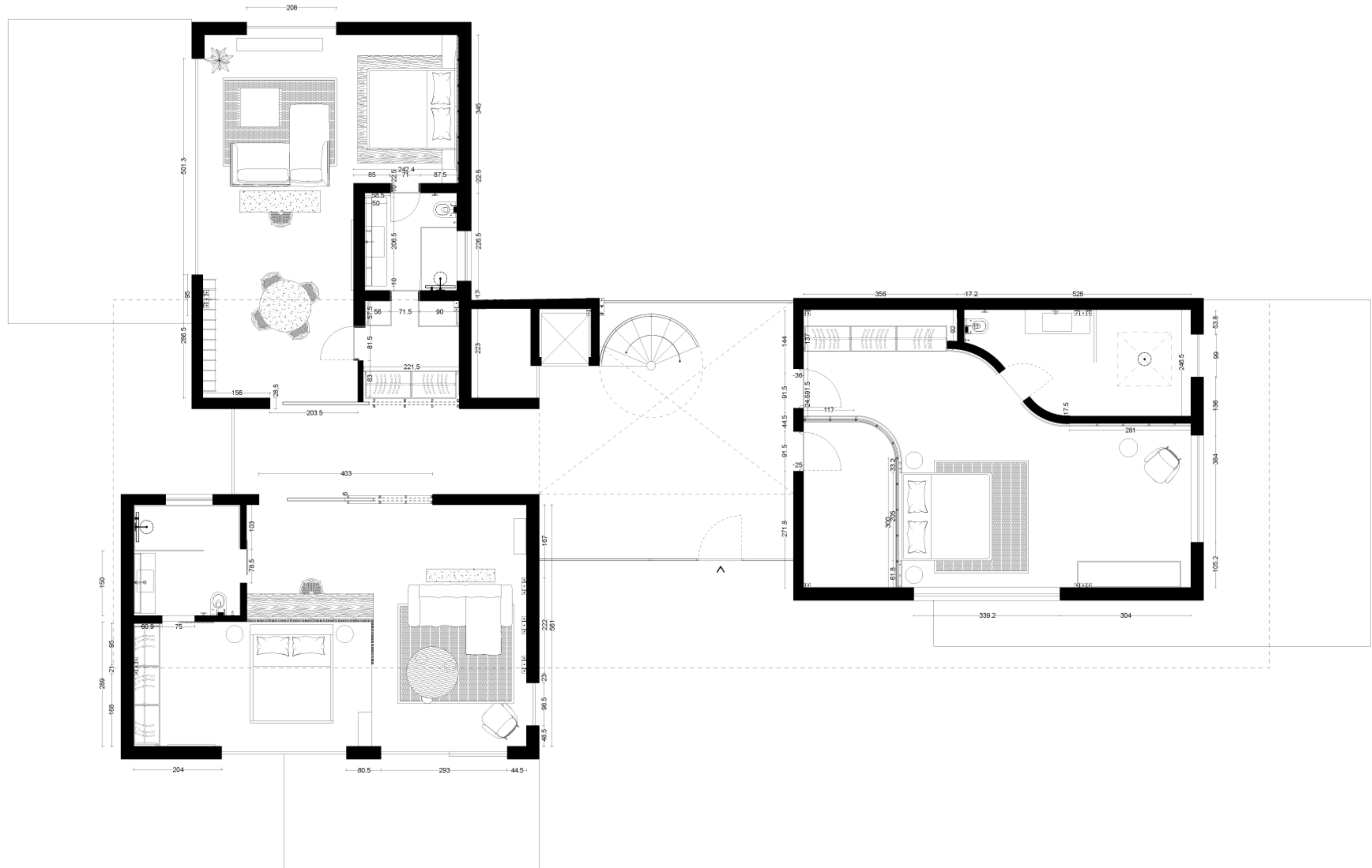
STRUCTURE DIAGRAM



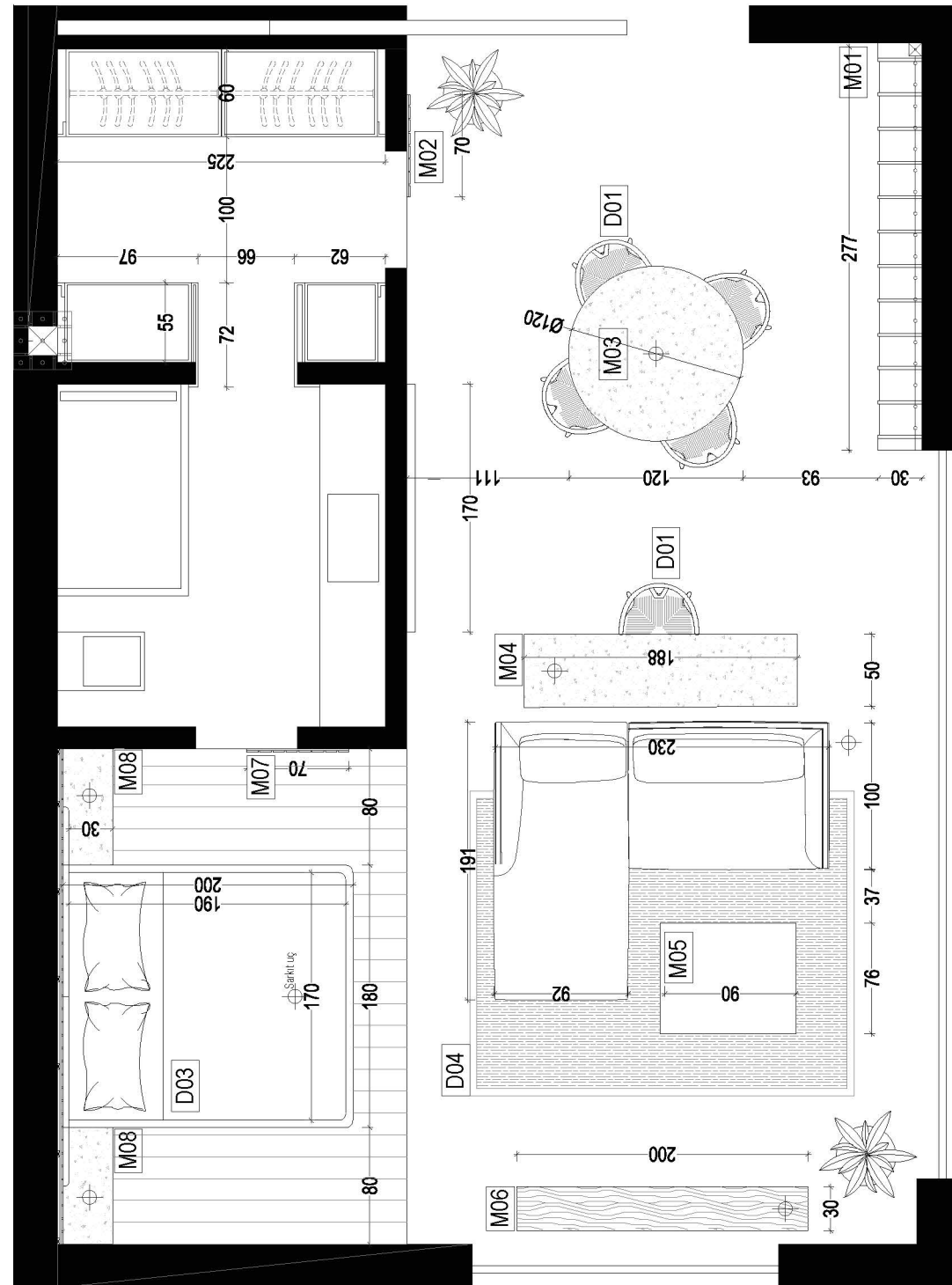
SECOND FLOOR PLAN AND RENDERING



GROUND FLOOR PLAN



GUEST ROOM



PHOTOS

