





Brian Benham

Bespoke Furniture Maker

Elbert, Colorado

719-347-5112

Brian@BenhamDesignConcepts.com

www.BenhamDesignConcepts.com

Social Media



@Benham_Design



Benham Design Concepts

Full Service Design and Fabrication Art Studio

I'm Brian Benham, the owner of Benham Design Concepts, a full-service Custom Furniture Design and fabrication art studio. I specialize in designing and crafting custom furniture and architectural elements that resemble works of art, using materials such as wood, glass, stone, and metals.

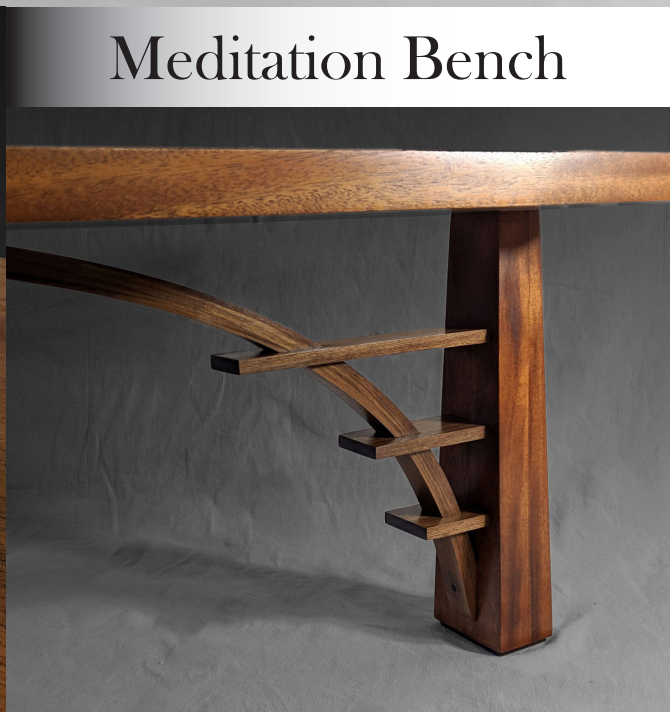
With decades of experience in the trades, my journey has taken me from working in a steel fabrication shop, at a bridge construction company, to the role as a project manager in a design-build firm where I designed and managed projects for both residential and commercial spaces. Over the past 13 years, I have been working in my own design studio, creating a wide variety of bespoke furniture and architectural elements.

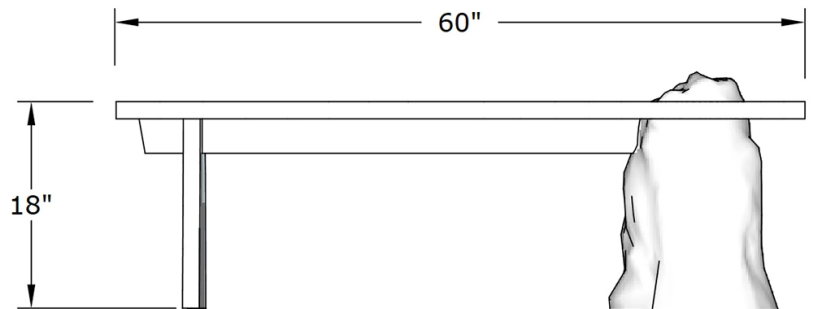
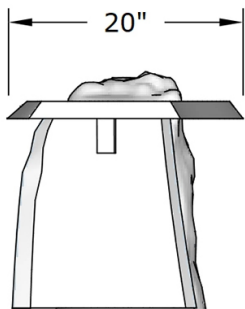
The furniture I produce serves not only as practical items but also as works of art, infusing character and style into any space. My expertise extends across various materials, including wood, stone, glass, and metals, enabling me to craft a diverse range of furniture— from tables, nightstands, cabinets, doors, lighting fixtures, and sculptural works.

Whether you're seeking functional furniture or distinctive art pieces, I can collaborate with you to design and build the perfect addition for your home or office.

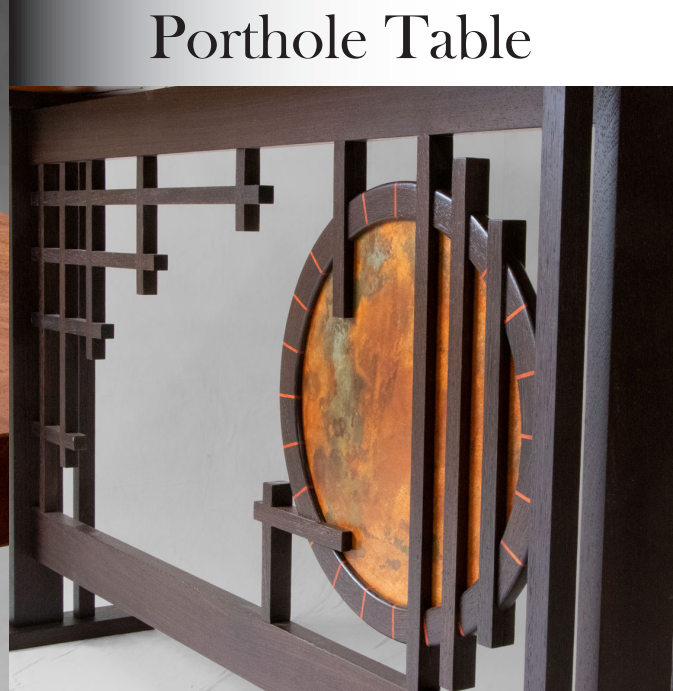


Meditation Bench





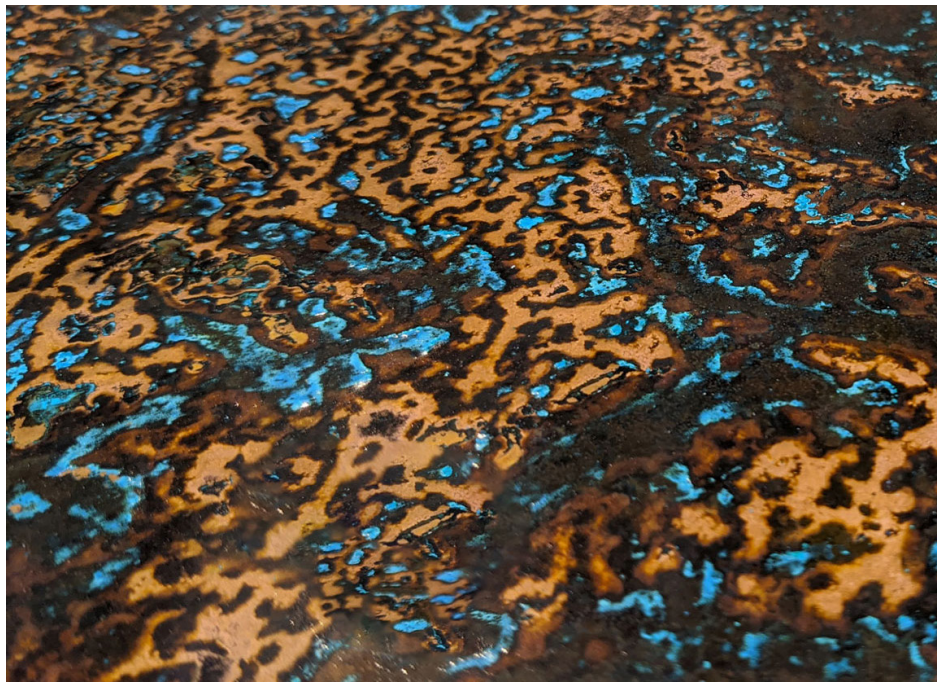
Several iterations of this bench have been developed with the objective of integrating rustic outdoor elements into an elegantly crafted piece of furniture. The top of the bench was handcarved to fit perfectly around the stone.



Porthole Table



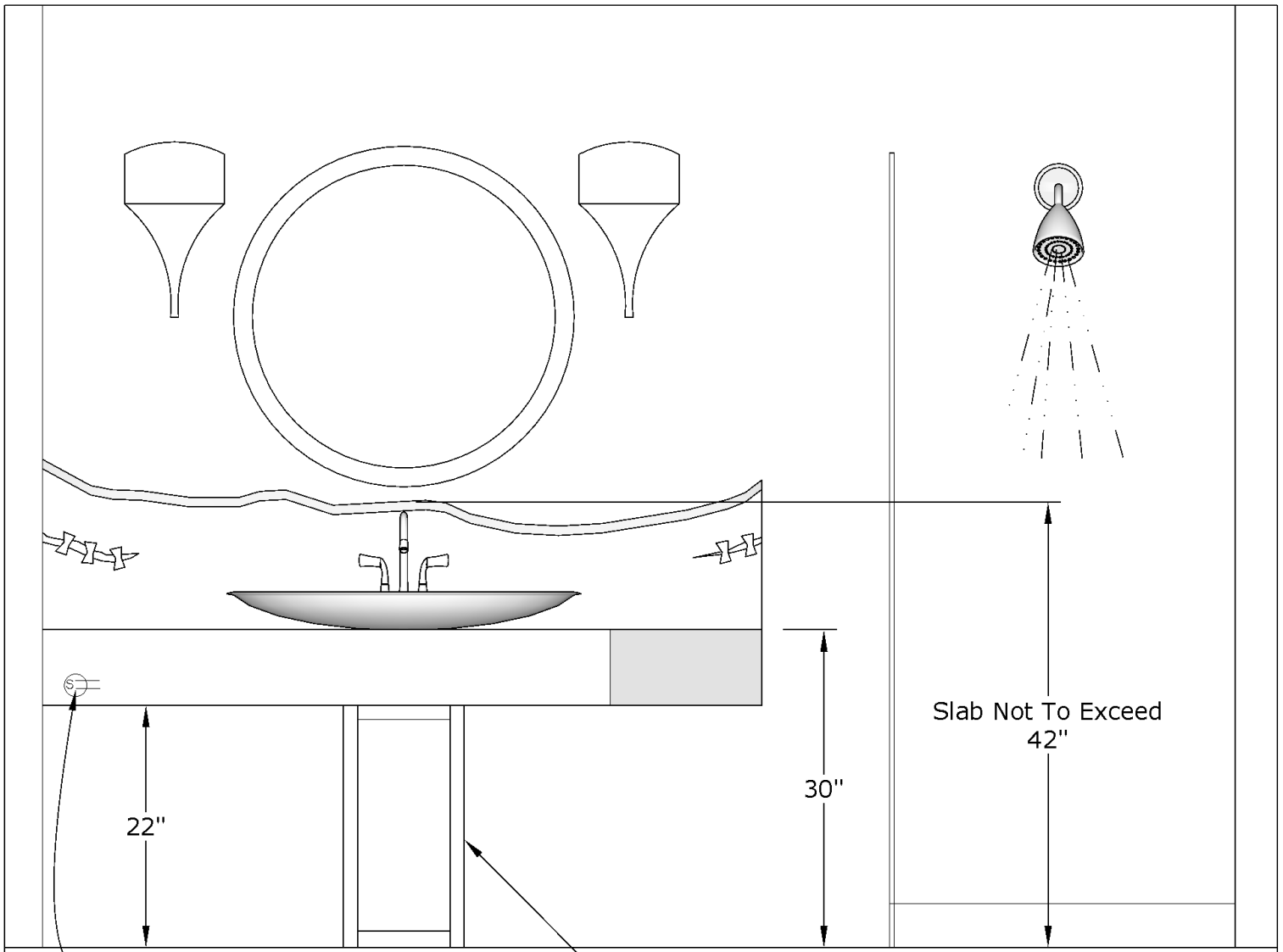
I specialize in crafting aesthetically pleasing patterns in metal using a sophisticated chemical patination technique. This process yields remarkable depth in both color and texture. The integration of these metal elements with wood creates visually striking art pieces.





Live Edge Backsplash

The Client wanted a Live edge back-splash, with inlaid bowties. The designer wanted a floating wood counter top. The client didn't want to see the plumbing. So we collaborated with the electrician to build an onyx pedestal that is backlit with LED's to create a soft glow. The sink was also back lit.



Electrician to provide switched outlet for LED Driver
Proposed to put it on a motion sensor so when door opens vanity base and sink lights up.

Plumber to rough in as pedestal style sink so Onyx base conceals plumbing.

Onyx base is not fixed so it can be moved to access plumbing





While I design furniture in many different styles from Mid-century Modern, Mountain Contemporary, to Craftsman and Mission styles, I always try to add my unique twist to each piece I build.





Model Train Shelf

Telling the client's stories are the most meaningful projects. For this project the client had a 1950's era model train from his childhood, where he had fond memories building it with his father. He wanted to display it in a decorative way.

We came up with the idea that the train should go through the shelf supports. We added trim to the supports to look like a tunnel entrance. I love that my design interacts with the main subject for the piece becoming a part of the story.



Jet Engine Table

This client was a Vice President of a major airline. He had acquired this compressor out of a Boeing 727 jet engine. He wanted to display his latest acquisition in the downstairs living room. His wife wanted a coffee table.

So we compromised and I suspended the engine in a coffee table, and created a river of glass coming out of it. The glass followed the live edge of a cottonwood slab. The weight of the engine is supported with a steel frame concealed inside the wood base.



Benham Design Concepts

www.BenhamDesignConcepts.com

brian@benhamdesignconcepts.com

719-347-5112

Want Something Cool?

Call Me!

