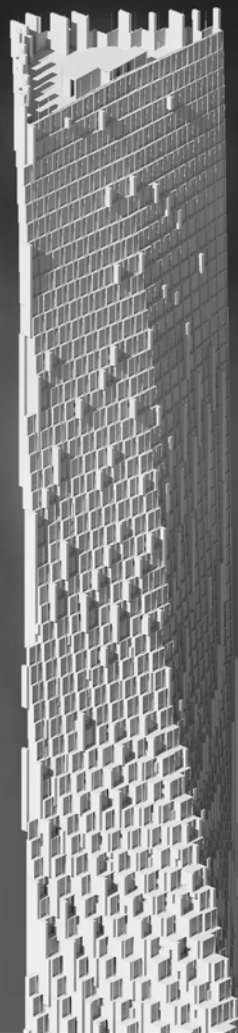


Ruby Kim | *PORTFOLIO*



Ruby Kim

Undergraduate Studies & Work Portfolio
2016 - 2023

p | (213) 503-5028
e | rubykims@gmail.com

Table of Contents

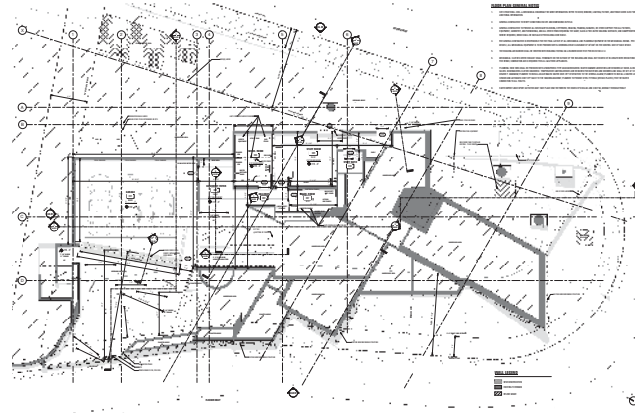
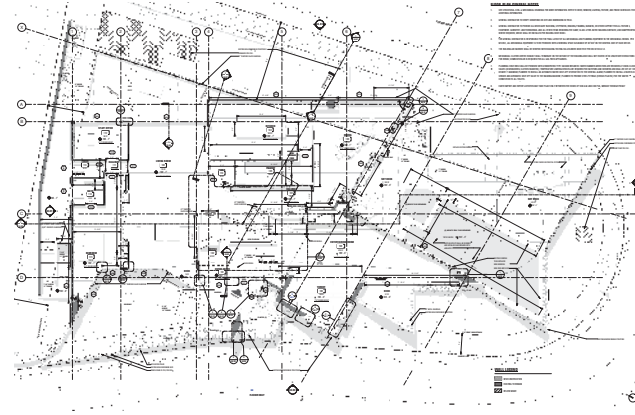
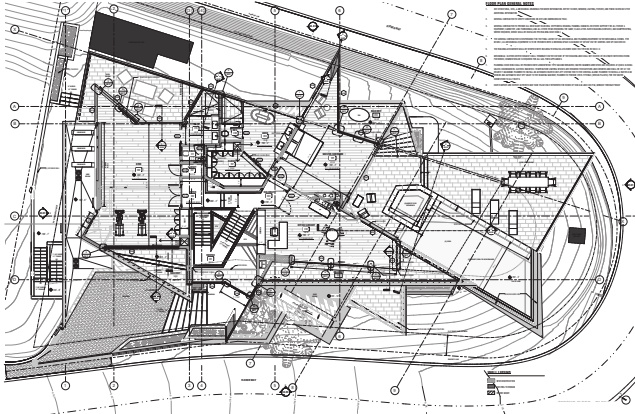
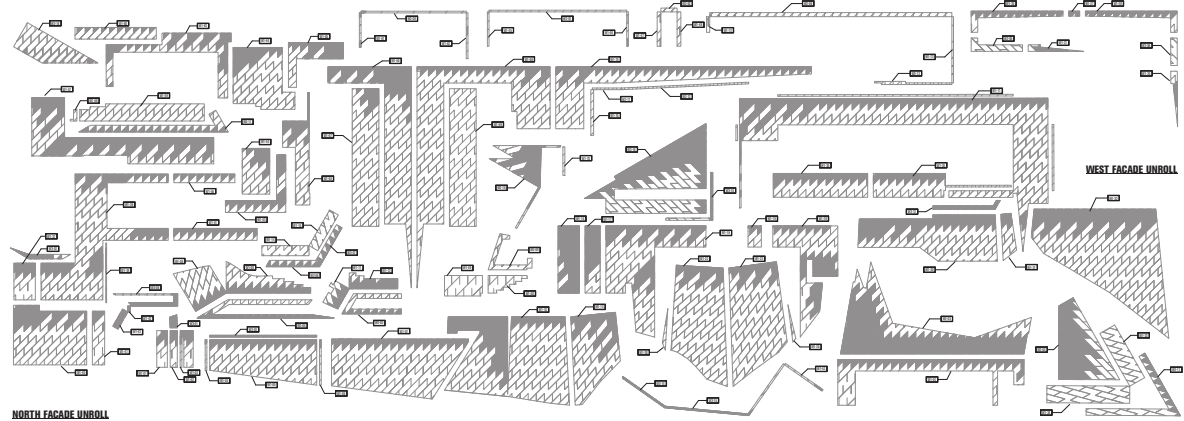
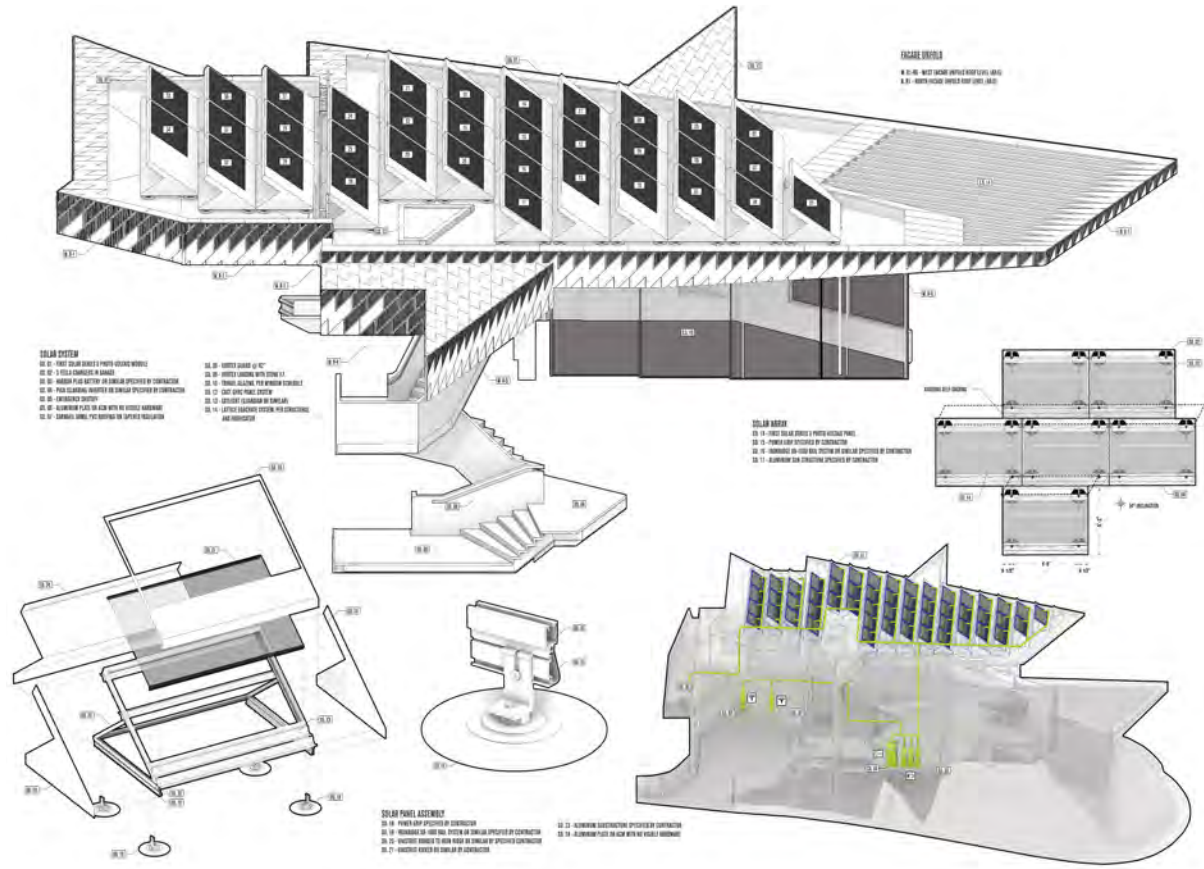
SkyHouse	1-2
Dragon Peak	3-4
Doheny Eye Institute	5-6
Transformative Brutalism	7-10
Berkeley Library & Performance Center	11-12
Design Development	13-14
Sculptural Chess Pieces	15

Skyhouse Residential

Situated above Sunset Boulevard, this design retains many of the original features of the original, creating an entirely new silhouette against the sky. A giant solar roof lands on top of the house to create a shaded microclimate beneath. The solar array contains 50 commercial grade solar panels that produces enough power for four homes of this size. A vortex stair spirals down from the roof, replacing the circulation of the historic house, connecting all levels with views commanding, 300 degree views of the city. The uniform stucco façade is replaced with panels punctured by long, horizontal bands of glass and flat to deep relief from gloss to matte, creating a future/ancient effect, reminiscent of the great Los Angeles textile block houses of Frank Lloyd Wright.



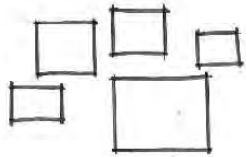
Los Angeles, CA 90069



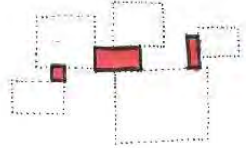
Dragon Peak Residence

Henderson, NV

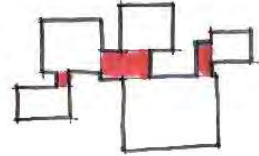
In an empty lot in a new gated community of MacDonald Highland, this project revolved around slowing time in contrast to the stereotypical high life of Las Vegas. Each programmatic block carried a concept of carving a stone over time for the client to enjoy both features of natural terrain of Buttes and an urban cityscape of the Las Vegas Strip. The 5,700 sq. ft. of space was configured to accomadate the lifestyle of the client with a master bedroom with a master bathroom, two bedrooms for visitors and a flexible space for a gym, two bathrooms, office, media room, and a big open-spaced block for the living room, dining, and kitchen. The exterior was planned for a slightly elevated pool with knife-edge design and two patios: a bbq patio and a fireplace patio.



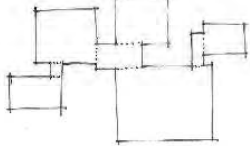
Mass to Volumes



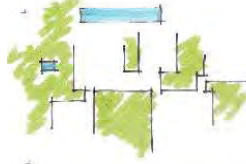
Transitions



Interconnectivity



Amalgamation



Inbetween Spaces



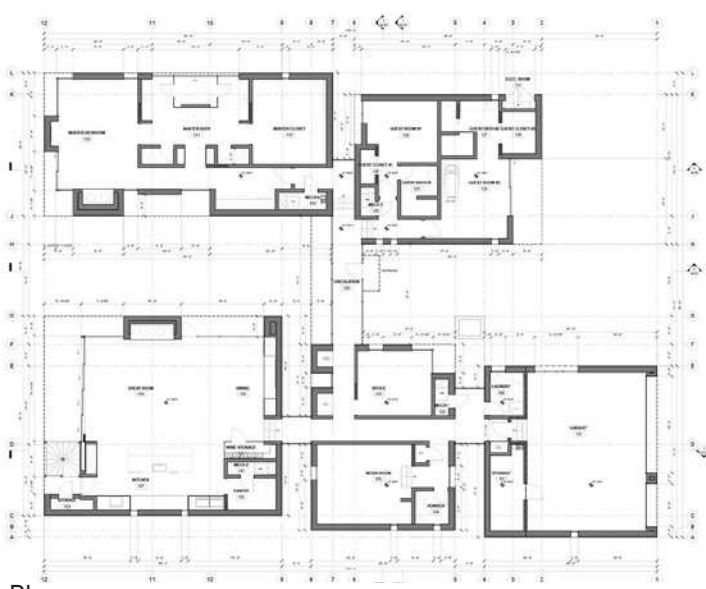
Introspective/Extrospective



Interior Views



Site



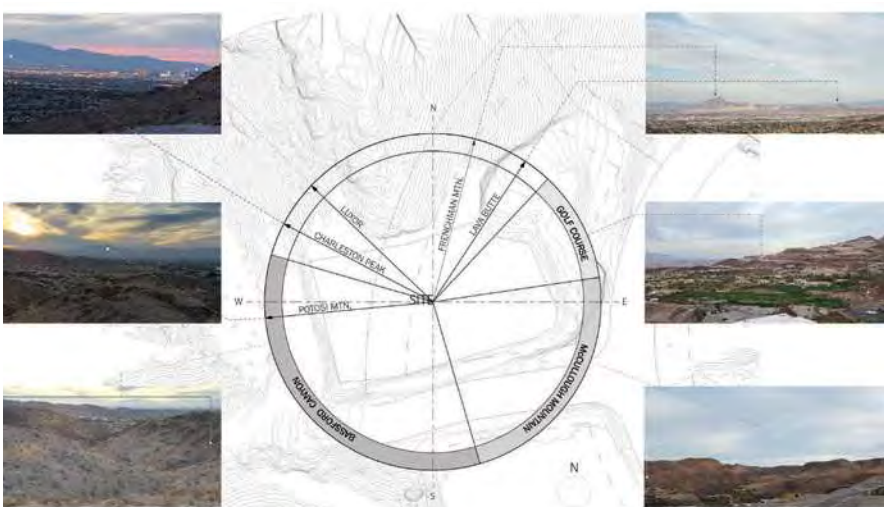
Plan



Section



Section



Views from Windows



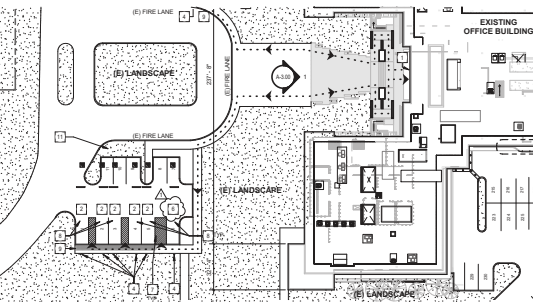
Plan

Doheny Eye Institute

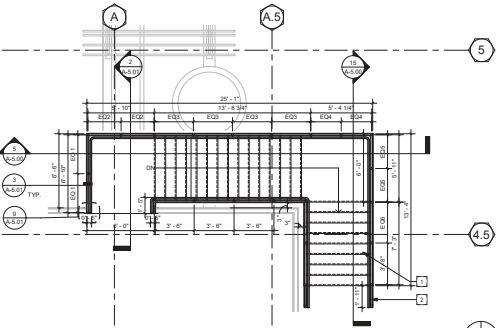
Built in the 1980's and a popular backdrop for commercial shoolings, this building was a remodel of a 3-story building space into a headquarter for a research center. Located in Pasadena, CA and over 100,000 Sq. Ft., the Revit software was used to create drawings and to coordinate lab equipments into the low-height ceiling of the building's infrastructure.



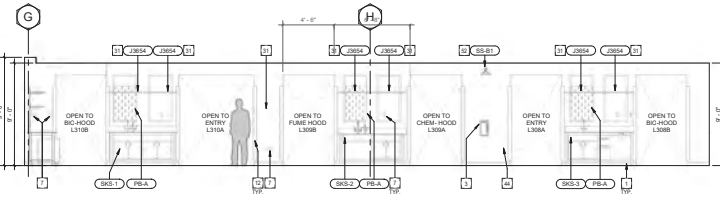
Pasadena, CA



ADA Close-up Main Entry Access



Top Railing Detail

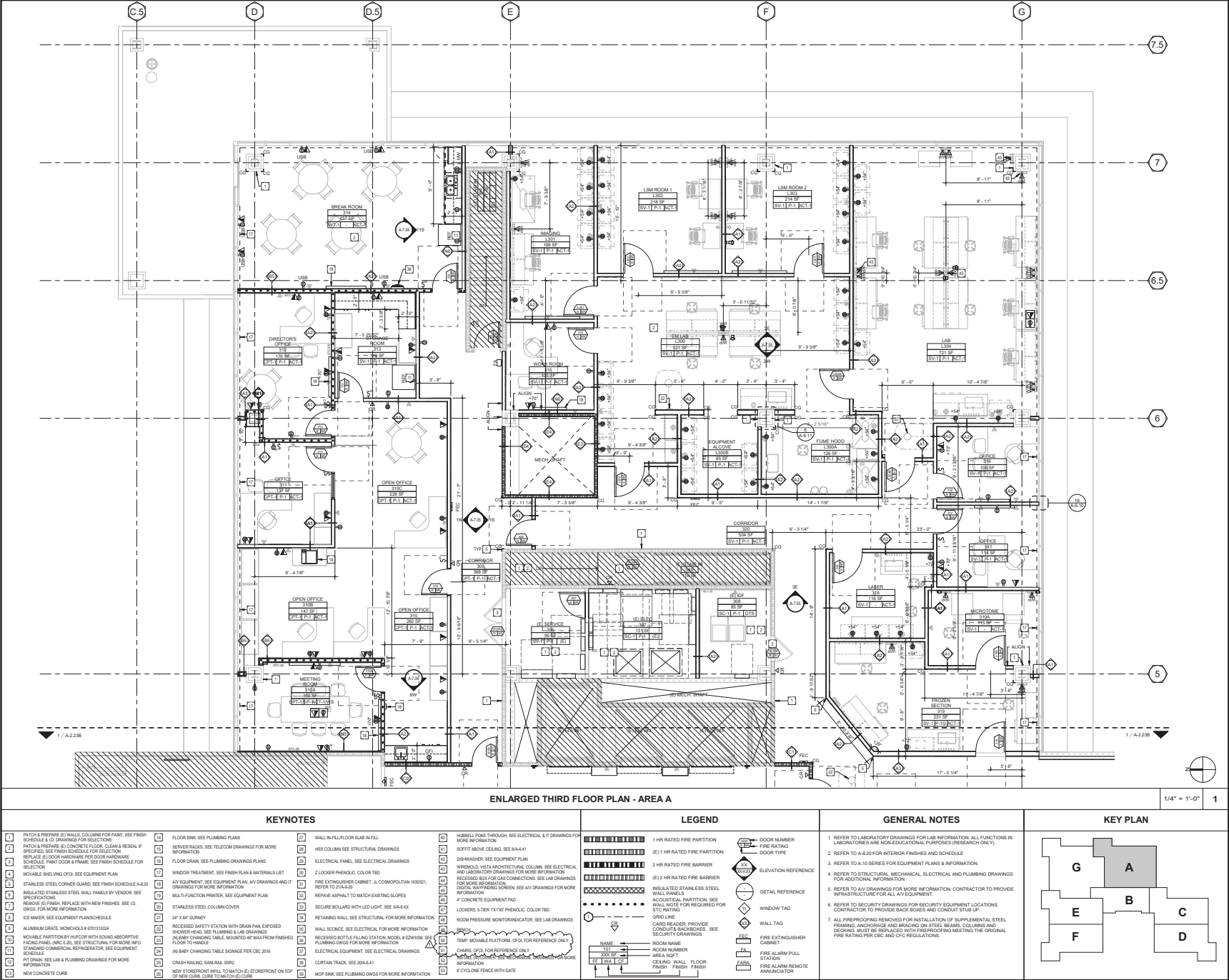


Typical Lab Elevation



VOLUME 1 of 3

INTERIOR
TENANT
IMPROVEMENTS



PROJECT DATA

SHEET TITLE

ENLARGED THIRD FLOOR PLAN - AREA A

SHEET NO.

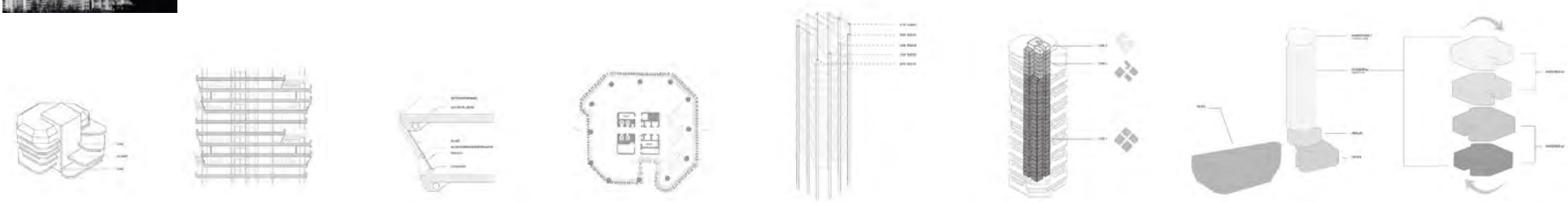
A-2.23A



Transformative Brutalism

Architecture at the intersection within the various systems of information enriches the areas of technical to cultural and visual to tactile. Considering the uses of precedent and antecedent, the main investigation examines the impact of structure, material systems on site, and building form as a methodological tool to guide a rigorous approach into an alteration of simple systems.

School Work



Case Study Diagrammatic Analysis

As part of the landmark to Signapore’s skyline, the post-modern high-rise sits on the renown strip called the “Golden Mile” as part of a governmental urban redevelopment project to reform the area occupied by squatters and industrial environment to reamp its image. Each octagonal plan are like dinner plates in patterns of rotating sequence and interlocking clonnades that are vertically stacked up to 574 ft. It took Paul Rudolph 7 years to complete the 41-floor high-rise for mixed-use development.



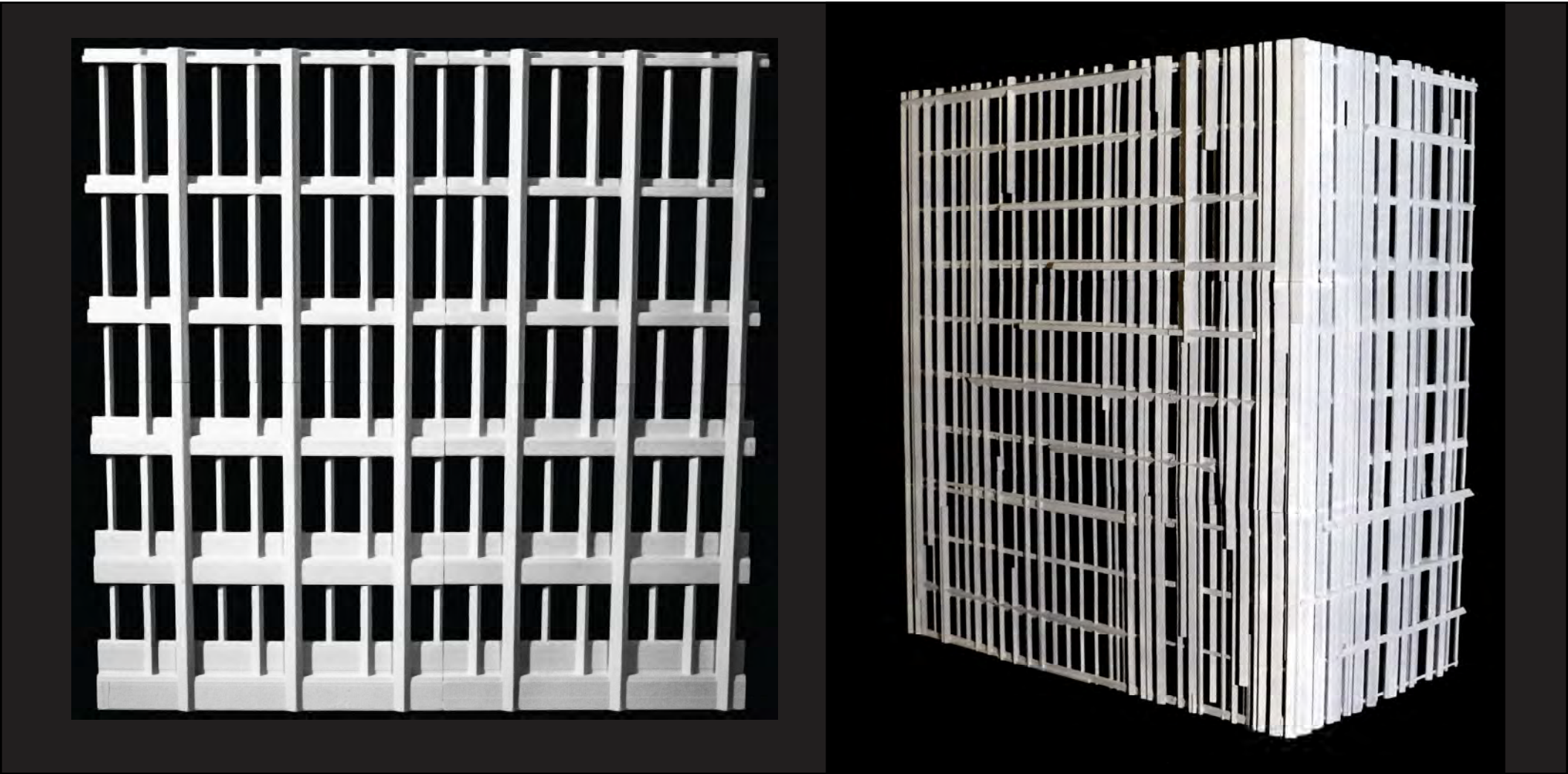
Iteration 1 Iteration 2 Iteration 3 Iteration 4 = Facade Elevations Corner Facade Axon

Scripted Iterations

Originally, Moderism never had an envelope, curtain wall, or a façade. There had to be a careful resistance to presentism of the envelope system when approaching the formal agenda. The facade was approached to the integrity of the original object. Technical decisions were taken place, following Peter Eisenman’s theoretical interpretation of misreading.

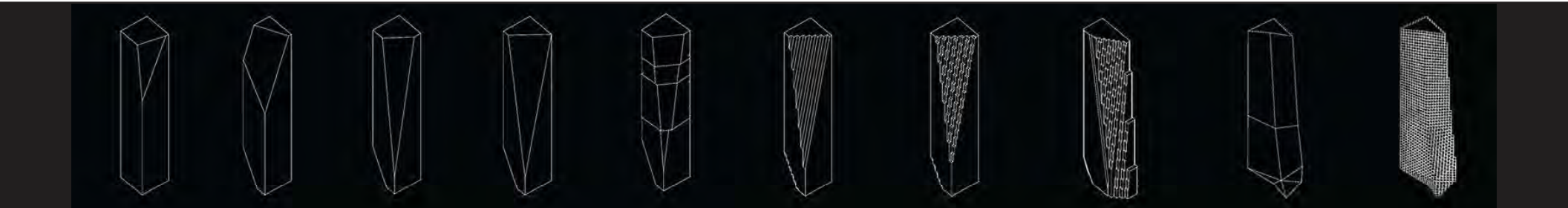
Eisenman’s theory of removing any traditional sense of logic or symbolism and instead applying new rules and interpretations to enable the connections made between philosophy and architecture, the facade was misinterpreted through the scripted language and then extracted into new geometrical patterns as a proposition to remain culturally unbiased.

The monlithic structure of the precedent was released from the rigidity of an orthagonal system and into an interlacing facade by addressing the three columnn conditions from the precedent: the exterior, intersection, and interior placements.

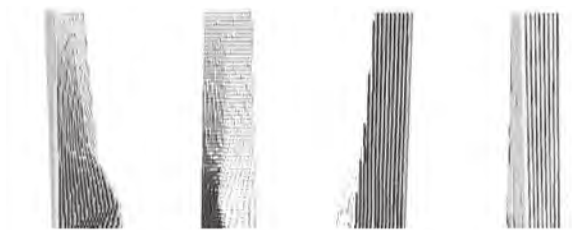


Powder-Printed Facade Model

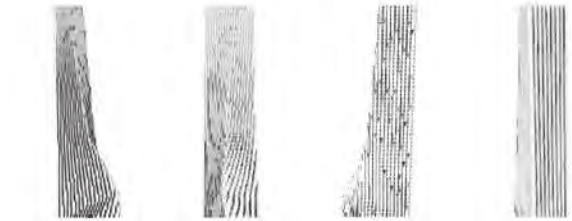
Powder-Printed Corner Facade Model



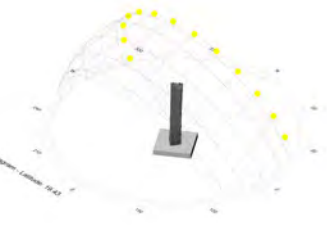
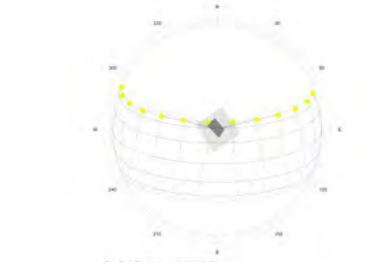
Massing Process



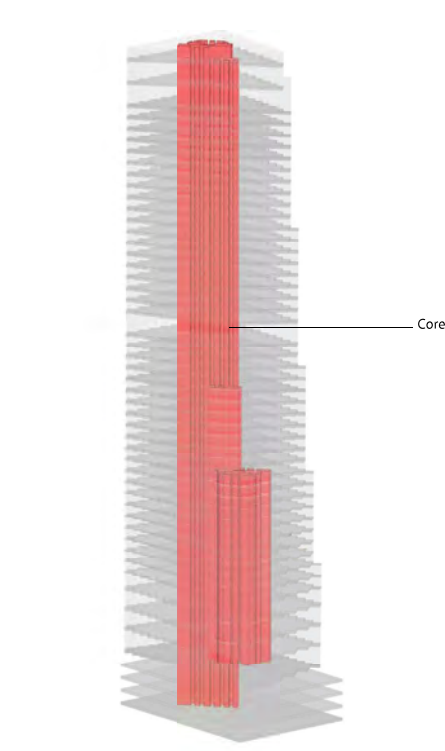
Summer Solstice - Shadow/Sun Study



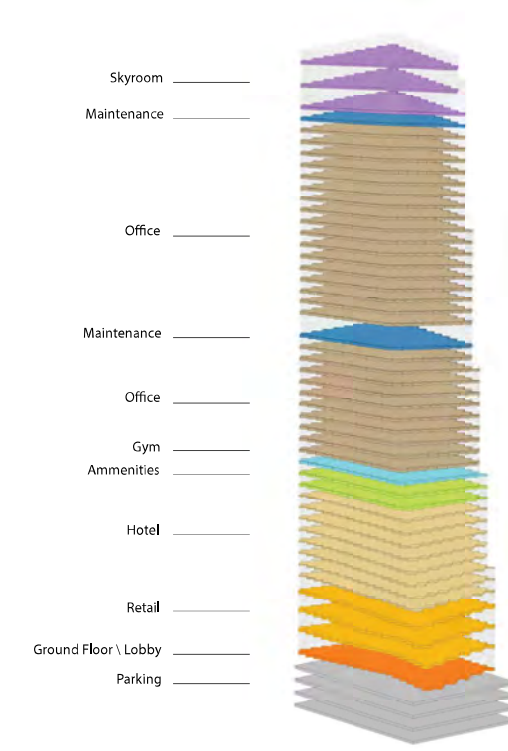
Winter Solstice - Shadow/Sun Study



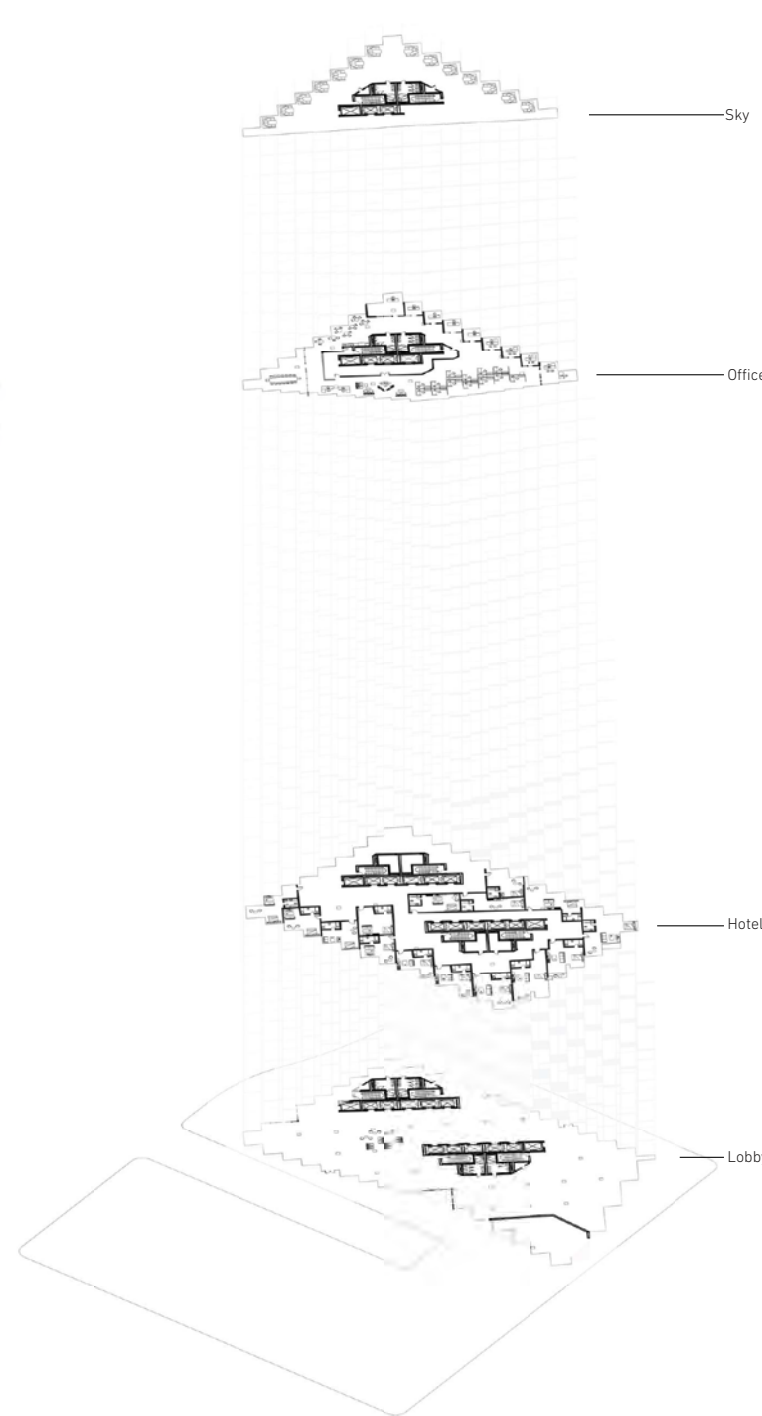
Summer Solstice



Core to Mass Diagram



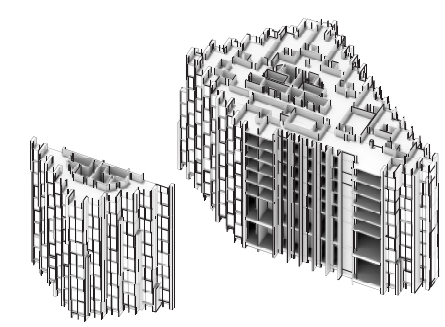
Program Diagram



Program to Floorplan Diagram

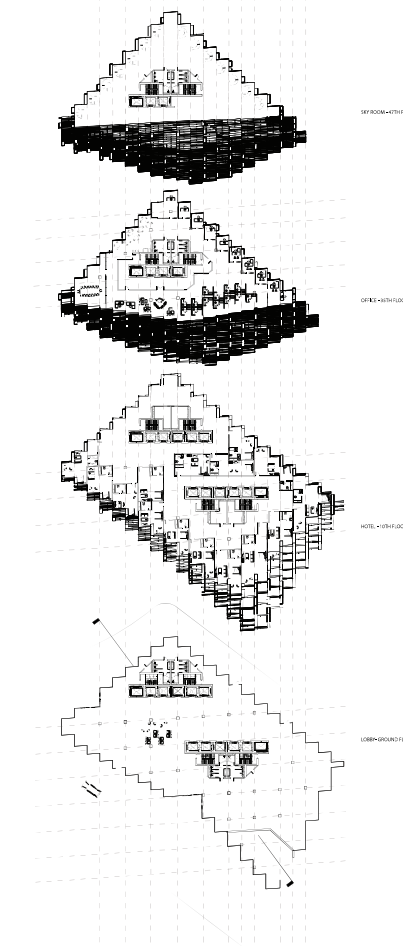


Vicinity Plan



Eisenman argues that "form is the sphere of mediation between our body, our inner world and the exterior world" in From Formalism to Weak Form: The Architecture and Philosophy.

To further find the mass to place the interwoven facade from the original location of precedent to the project site in Mexico City, Mexico, the sun path and shadows were integrated to the surface of the mass. The newfound exposure transformed into staggered terraces for residences and visitors to transpire the cultural amenities around its surroundings in all sides.



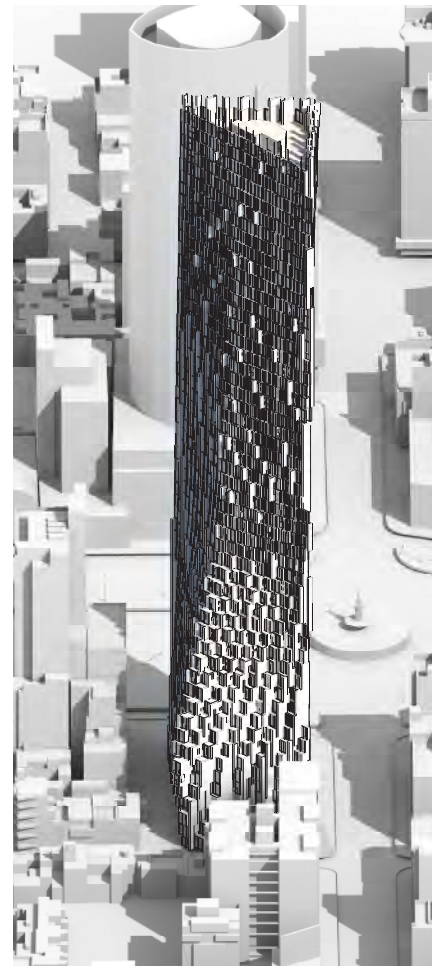
Typical Floor Plans



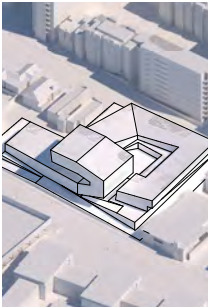
East Elevation



East Elevation



Axon

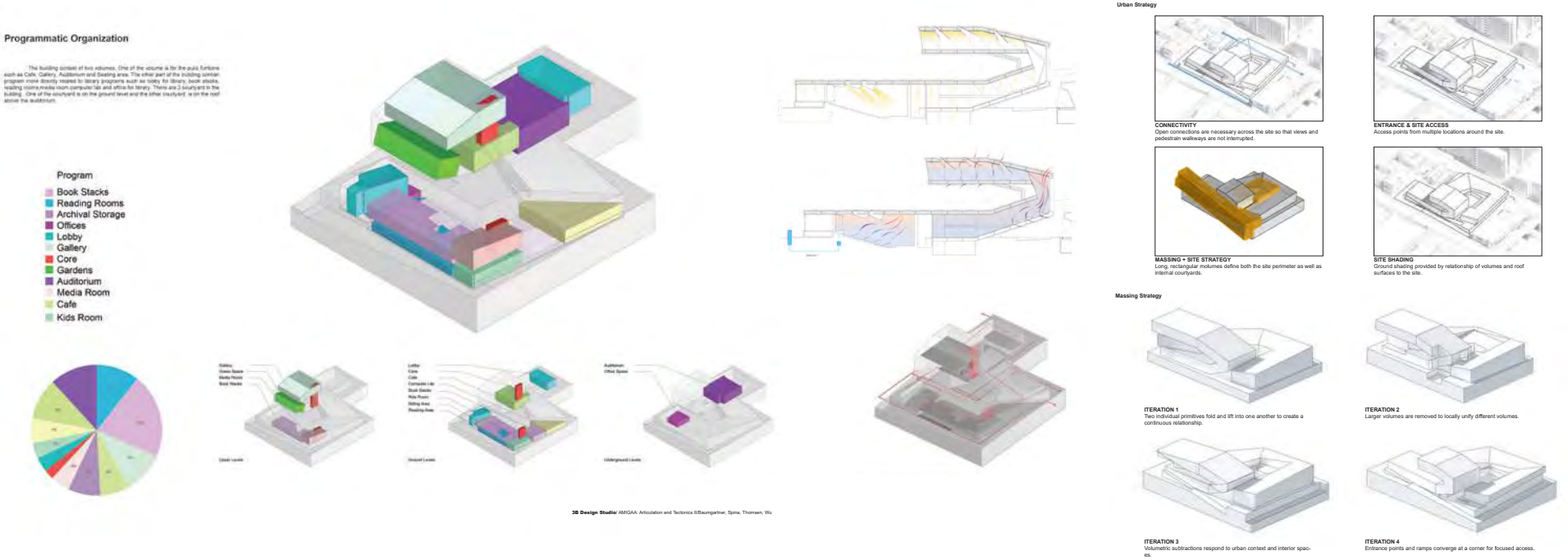
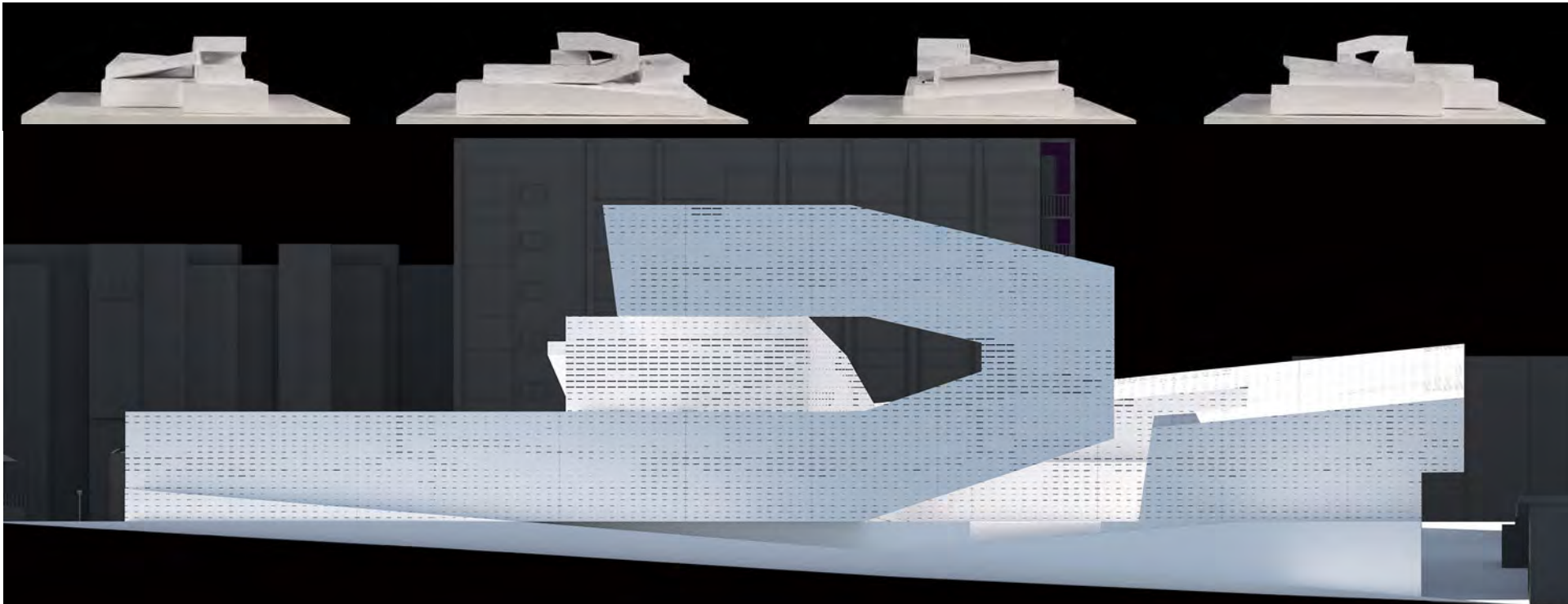


Berkeley Library & Performance Center

In this project, the massing integrates two parts of continuous rectangularity to form a centripetal whole. One part horizontally curls around the site to slightly nest and rest between the vertical folding of another in identification of its individuality and connection. The vertical part is intended for visual connection to the Berkeley campus while the remaining member balances its visual weightiness by subtracting the mass in indication of center axis. Additionally, the lifting movements of each mass implies the tension and touch of two mass creates a connection between the lower and upper levels of the two courtyards. Mass and ground connection are then further unified into an integral relationship and responds to the urban context by subtracting both around the site perimeter; The subtraction forms new figural voids of unification.

The oxymoron iconicity of monolithic-like forms adventure into new and continuing figures at the interior. Figures form in circulation encourages exploration of the library while following the verticality and horizontality behavior of the exterior. Apertures are created in response to the verticality; it is positioned to lighten the interior, away from the stacks, and towards the reading rooms. Similarly, private and public spaces are distinguished in separate masses and connected through a single core.

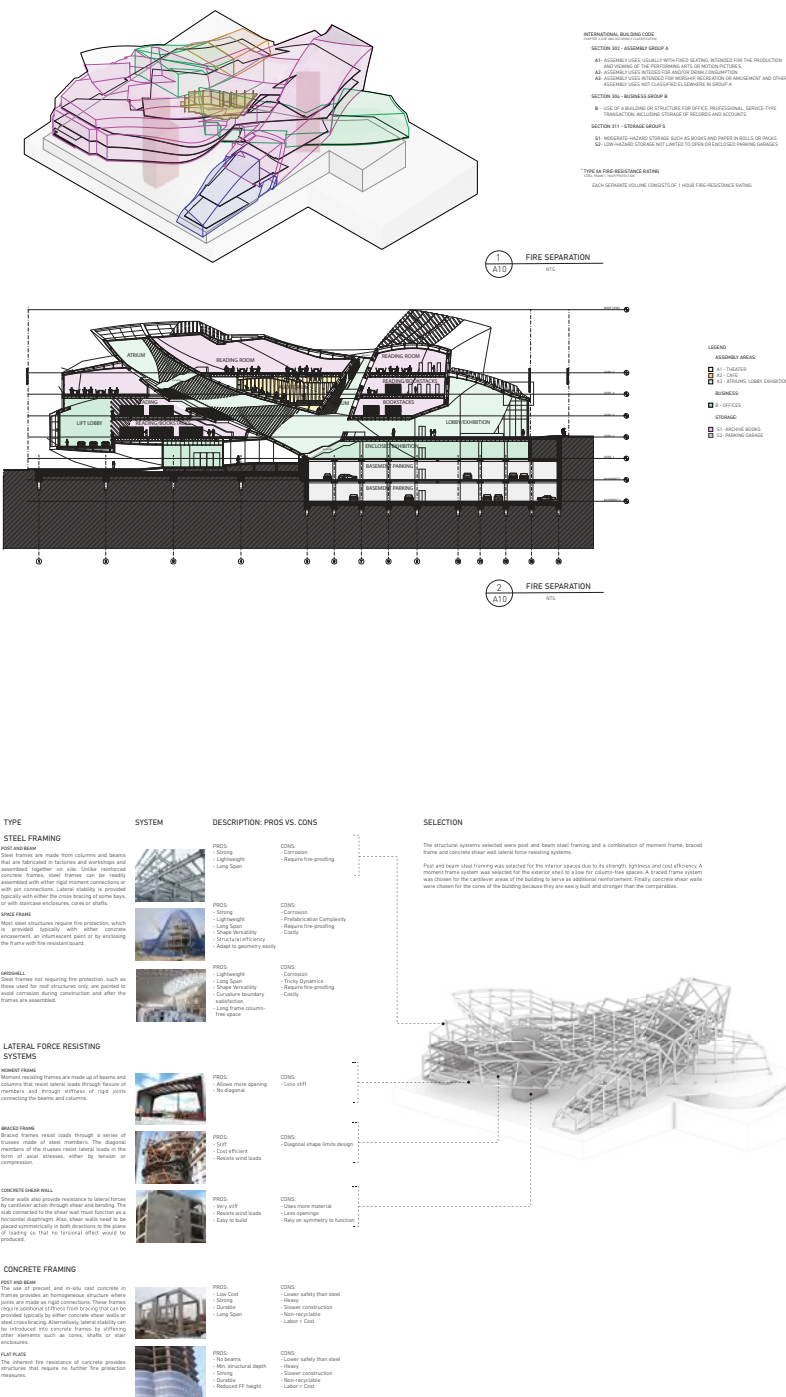
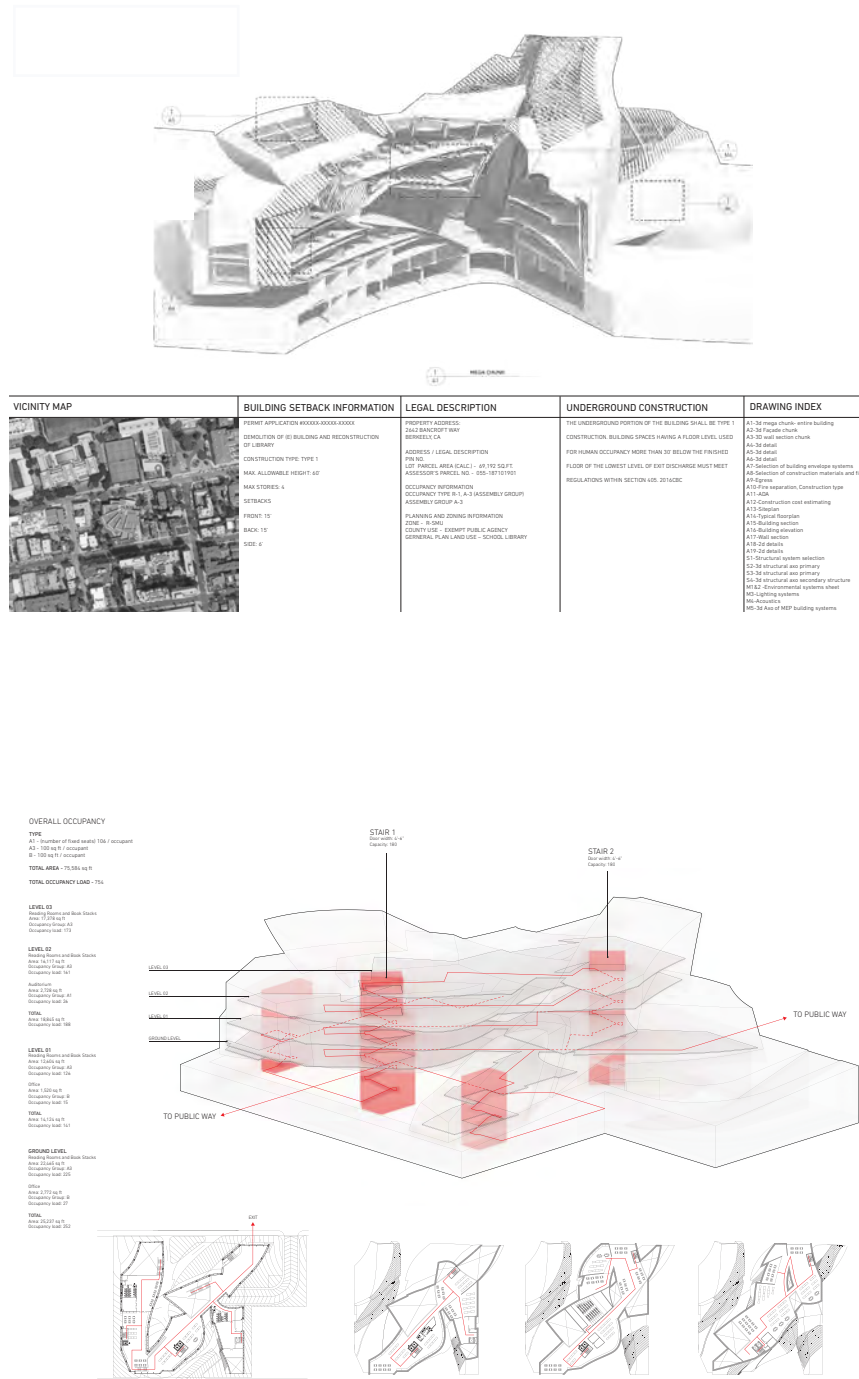
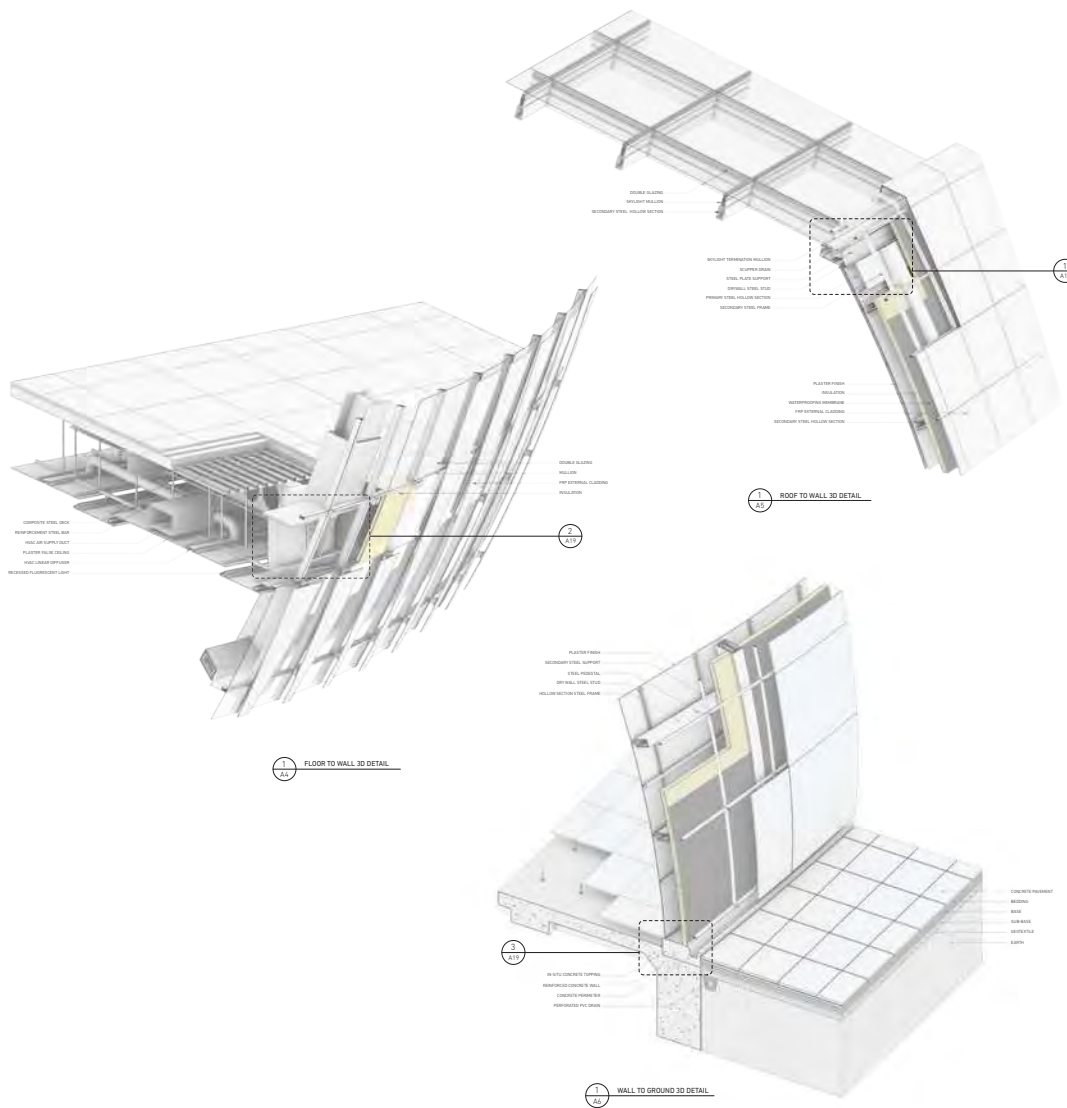
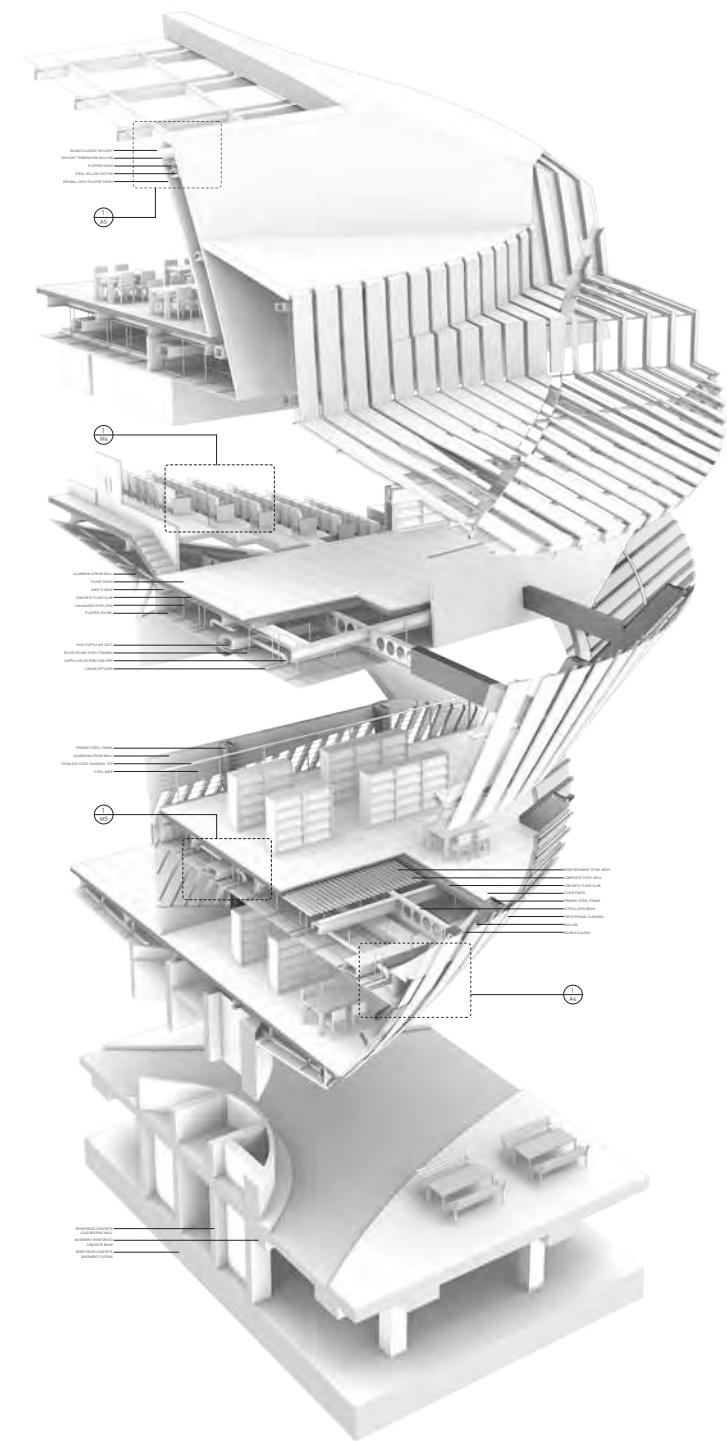
School Work



DESIGN DEVELOPMENT

This project investigates issues related to the implementation of design: technology, the use of materials, systems integration, and the archetypal analytical strategies of force, order, and character. It includes a review of basic and advanced construction methods, analysis of building codes, the design of structural and mechanical systems, environmental systems, the development of building materials and the integration of building components and systems. The intent is to develop a cohesive understanding of how architects communicate complex building systems for the built environment and to demonstrate the ability to document a comprehensive architectural project and stewardship of the environment.

School Work





SCULPTURAL CHESS PIECES

A creation using two chess pieces are scaled into equal parts to go beyond the conventions of drawing. A nook and a pawn are drawn, modeled, rendered, 3D powder printed, and then replicated into sculptural molds.

School Work

