

# PORTFOLIO

ARCHITECTURAL DESIGN

**MATTHEW GILLIARD**

[gilliard5563@gmail.com](mailto:gilliard5563@gmail.com)

(732)-796-3895

430 W 24TH ST, APT 14C New York, NY 10011

# TABLE OF CONTENTS

## PHILADELPHIA UNIVERSITY

ARCH 312

ARCH 412

ARCH 508

## SPIEZLE ARCHITECTURE GROUP

LOWER MERION SITE STUDIES

## JDAVIS ARCHITECTS

BOOKER PARK SOUTH

WALTONWOOD SILVERTON

## DIGITAL RENDERINGS

SPIEZLE ARCHITECTURE GROUP

SHORE POINT ARCHITECTURE

PHILADELPHIA UNIVERSITY

## SKETCHES



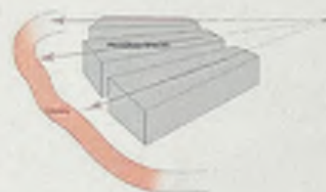
ARCH 312 PROJECT 2  
BARBADOES ISLAND  
BOAT HOUSE

The first step in the design process and understanding of space/form for the dragon boat house was through some exploration of plaster cast molds. Armature that would hold the molds became an added exploration. The exploration of the plaster mold helped to find the language of the dragon boat house.

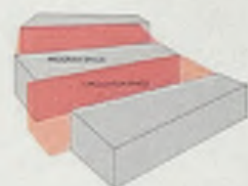
SYNONYMY



PROGRAM



ORIENTATION



CIRCULATION

PLASTER MOLDS  
CONCEPTUAL  
SKETCHES



LOWER LEVEL



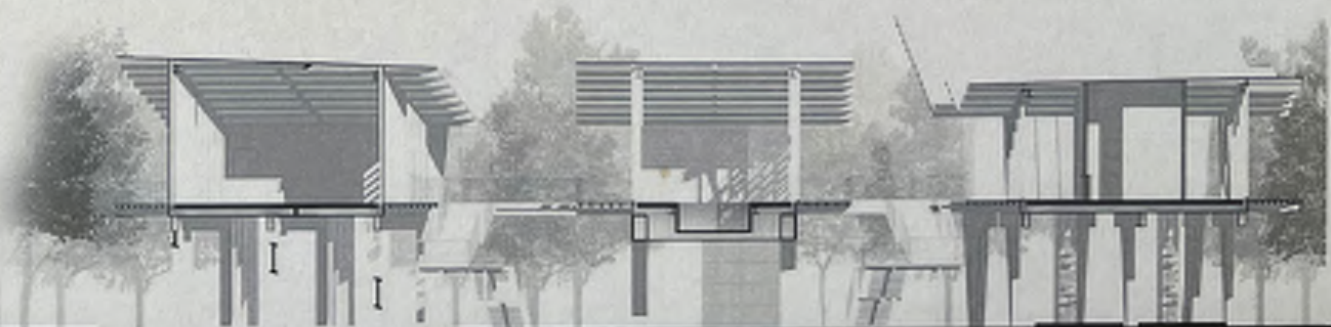
UPPER LEVEL




AXON PERSPECTIVE



SITE PLAN



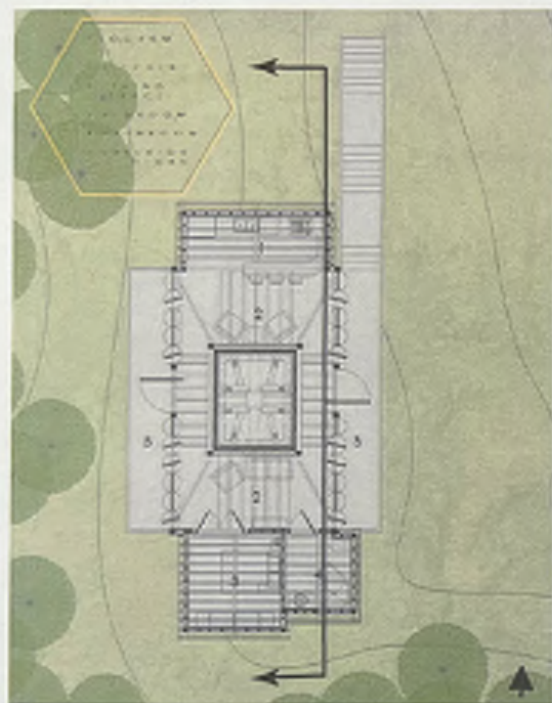
NORTHEAST SECTION



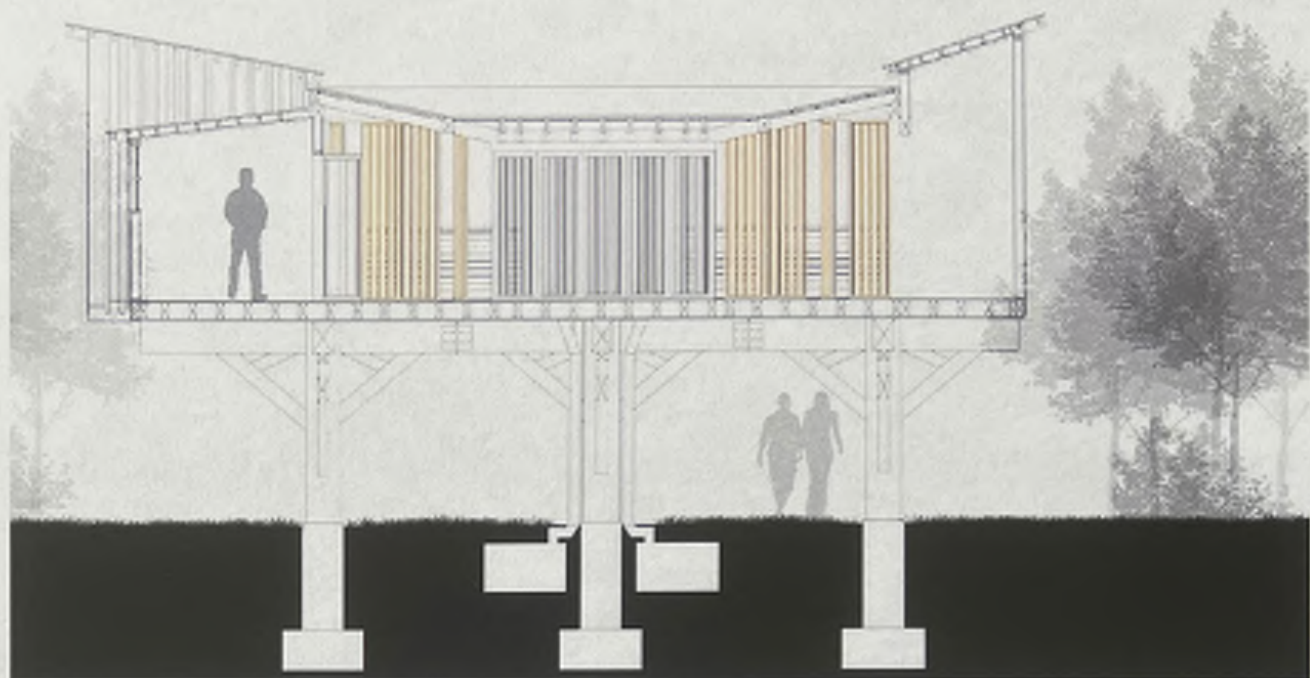
ARCH 412 PROJECT 2  
UNIT DWELLING  
PROJECT

My primary focus for this design was the bioanalogous system of a honey bee.

The location of the site was influenced by the locations of the honey bee. The design components were implemented as a response to climate and the dynamic programmatic needs of a live/work space.



SITE PLAN W/ FIRST FLOOR



EAST SECTION



WATER  
COLLECTION



Bees regulate the temperature of the hive at around 90 to 95 degrees all year by buzzing their wings. A system of pivoting doors help to regulate the air quality of the living spaces



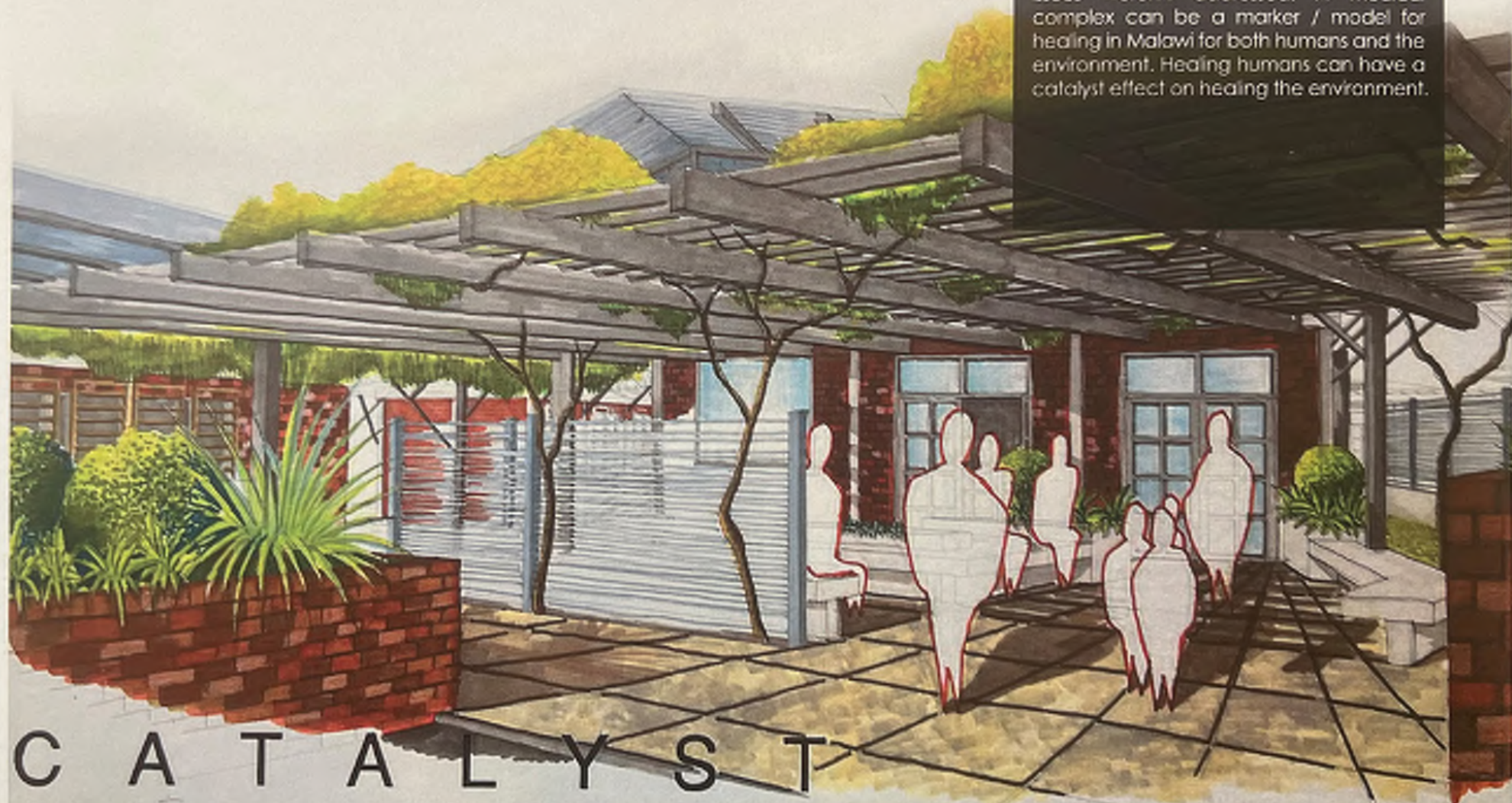
PIVOTING  
DOOR FACADE



WEST SECTION

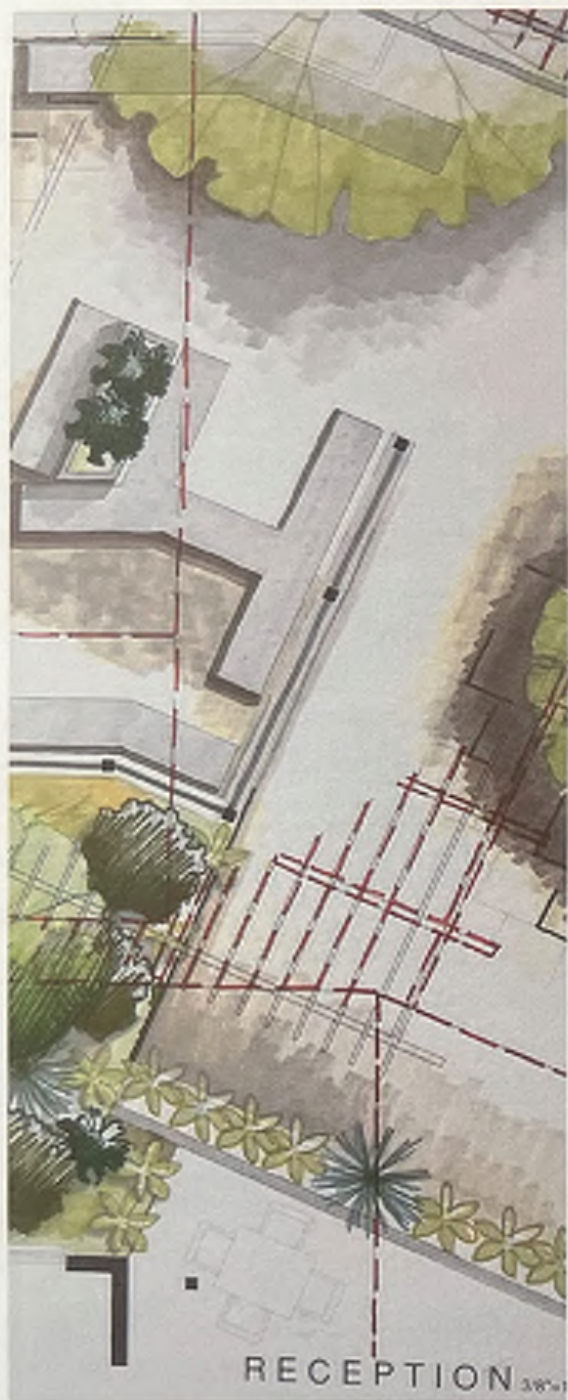
ARCH 508 PROJECT 1  
MALAMULO HOSPITAL  
MALAWI, AFRICA

Malawi as a country that suffers from some difficult ecological issues. One important question is why not try and heal the environment through the process of healing people. It would be crazy if these issues weren't addressed. A medical complex can be a marker / model for healing in Malawi for both humans and the environment. Healing humans can have a catalyst effect on healing the environment.



C A T A L Y S T

MALAMULO HOSPITAL - LIMBE MEDICAL COMPLEX



DETAILED PLAN

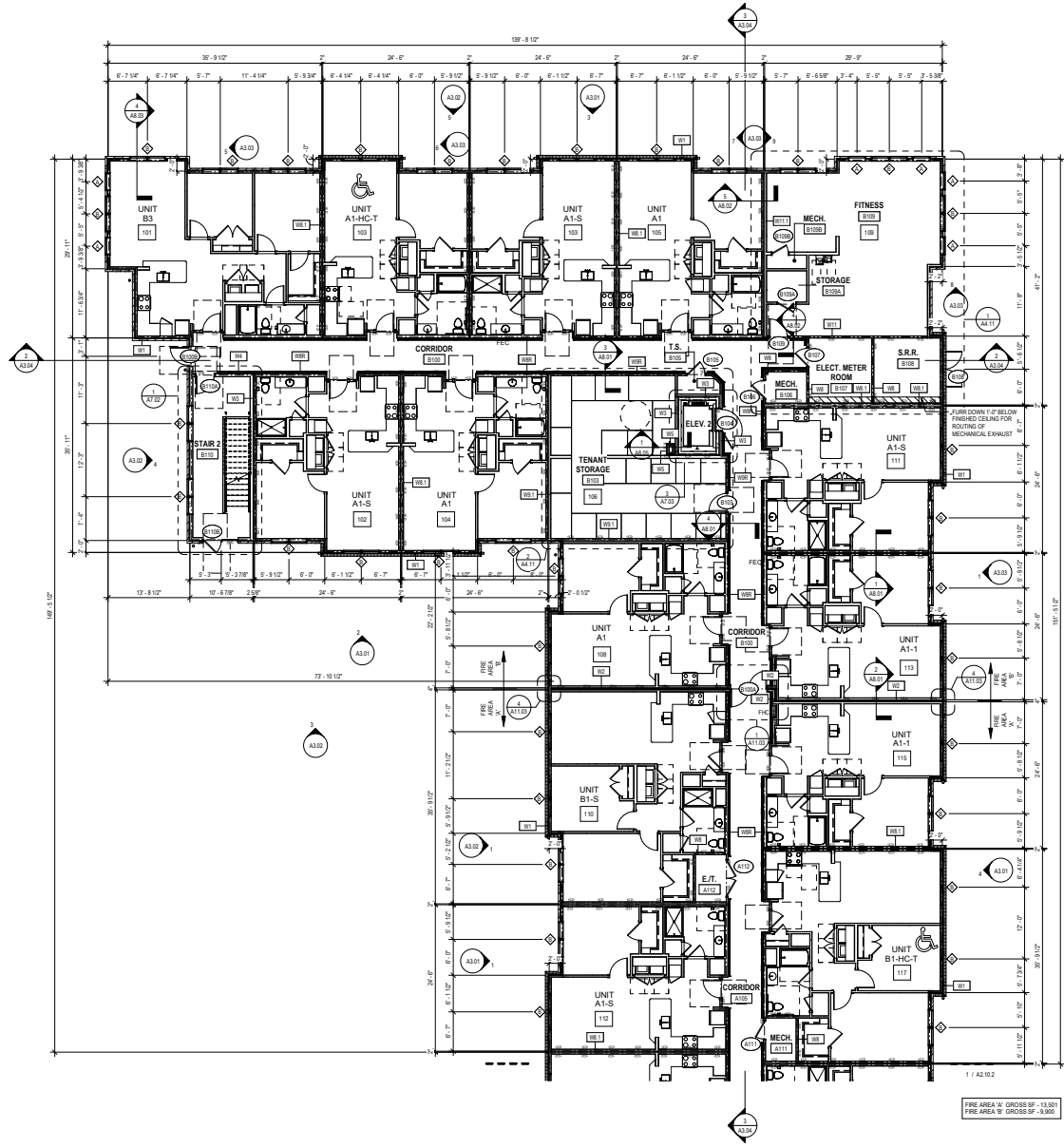


PERSPECTIVES









FIRE AREA 'A' GROSS SF = 11,011  
 FIRE AREA 'B' GROSS SF = 9,980

ENLARGED PARTIAL PLAN - FIRST FLOOR 1

GENERAL NOTES - PLAN

THE ARCHITECTURAL DRAWING MUST BE USED IN CONJUNCTION WITH THE CIVIL, STRUCTURAL, MEP, FIRE PROTECTION DRAWINGS AND SPECIFICATIONS. THE CONTRACTOR IS RESPONSIBLE FOR ALL COORDINATION BETWEEN THE DRAWINGS. DISCREPANCIES SHOULD BE BROUGHT TO THE ATTENTION OF THE ARCHITECT.

THE CONTRACTOR IS ADVISED THAT THE AVAILABLE SPACE FOR ROUTING ALL ELECTRICAL, MECHANICAL, PLUMBING, FIRE PROTECTION AND COMMUNICATION PIPING, CONDUIT, TRAYS AND ELECTRICAL MAY BE LIMITED IN MANY LOCATIONS. THE CONTRACTOR SHALL COORDINATE ALL OF THE TRADES WORK AND MAKE ADJUSTMENTS WITH THE ARCHITECT'S APPROVAL TO THE ROUTING OF THESE TRADES AS REQUIRED. ANY REMOVAL RESULTING FROM THE FAILURE TO COORDINATE WILL BE PERFORMED BY THE CONTRACTOR AT NO ADDITIONAL COST.

ALL PENETRATIONS OF FIRE RATED ASSEMBLIES SHALL BE FIRE BLOCKED AND SEALED PER UL APPROVED METHODS. FIRE RATED PRODUCTS AND SEALANTS FROM DIFFERENT MANUFACTURERS SHALL NOT BE COMBINED WITHIN A SINGLE RATED PENETRATION TO MEET THE UL APPROVED ASSEMBLY.

ALL DIMENSIONS ARE FOR THE FACE OF STUDO / CM WALLS UNLESS OTHERWISE NOTED.

ALL DOORS SHALL BE INDICATED A MINIMUM OF 4'-0" IF PREFERRED, FROM THE INTERIOR FACE OF THE WALL TO THE EDGE OF THE DOOR FRAME UNLESS OTHERWISE NOTED.

CONTRACTOR IS RESPONSIBLE FOR INSTALLING ALL BLOCKING AND REINFORCING AS REQUIRED FOR THE INSTALLATION OF, INCLUDING BUT NOT LIMITED TO, TOILET PARTITIONS, TOILET ACCESSORIES, HANDRAILS AND MILLWORK.

COORDINATE CYPRESS BOARD JOIST AND CEILING CONTROL JOINT LOCATIONS WITH CYPRESS BOARD SUBCONTRACTOR AND PROJECT TEAM TO DETERMINE REQUIRED DISTANCE BETWEEN JOINTS.

SEE CIVIL DRAWINGS FOR TOP OF SLAB ELEVATIONS.

SEE CIVIL DRAWINGS FOR UNDERGROUND PIPING FROM DOWNSPOTS TO STORMWATER.

SEE CIVIL DRAWINGS FOR FOUNDATION DRAIN TERMINATION LOCATIONS OR CONNECTION LOCATIONS TO STORMWATER SYSTEM.

SEE LANDSCAPE DRAWINGS FOR PLANTING & HARDSCAPE INFO.

SEE STRUCTURAL DRAWINGS FOR SHEARWALL STRAPS, BRACES, MISC. CONNECTION DETAILS & TIE ZONE.

SEE ELEVATIONS AND WALL SECTIONS FOR MATERIAL AND HEIGHTS.

SEE ELEVATIONS FOR MATERIAL TAGS.

SEE PLANS FOR WINDOW TAGS.

SEE ELEVATIONS FOR WALL SECTION TAGS.

SEE UNIT PLANS FOR WINDOWS & ANTERIOR DOOR TAGS.

SEE A4.00 SERIES FOR ENLARGED UNIT PLANS.

SEE SHEETS A7.00 SERIES FOR ENLARGED STAIR AND ELEVATOR PLANS AND SECTIONS.

SEE ROOF PLANS FOR TYP. DRAFT STOPPING NOTES FOR WOOD FRAMED BUILDINGS.

GO TO CONFIRM FIRE LOCATIONS IDENTIFY FIRE MARSHAL AND ARCHITECT PRIOR TO INSTALLATION.

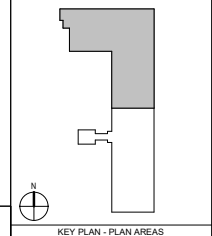
WHERE THERE IS AN ACCESSIBLE CONCEALED FLOOR, FLOORING OR ATTC SPACE, FIRE WALLS, FIRE BARRIERS, FIRE PARTITIONS OR ANY OTHER WALL REQUIRED TO HAVE PROTECTED OPENINGS OR PENETRATIONS SHALL BE EFFECTIVELY AND PERMANENTLY IDENTIFIED WITH SIGNS OR TAGS LOCATED IN THE CONCEALED SPACES INDICATING THE TYPE OF ASSEMBLY AND THE FIRE RATING. 4-HOUR NO. WALLS SHALL BE 2" HIGH. SEE MECH. SECTION 303.7.

FOR THE 2018 NF FIRE PREVENTION CODE, THE OWNER SHALL DEVELOP A DESIGNATE A PERSON TO BE THE FIRE PREVENTION PROGRAM MANAGER AND ENSURE THAT THE COMPLETION OF THE PROJECT. SEE 2018 NF FIRE CODE SECTION 308. SEE THE FIRE CODE FOR REQUIRED MEASURES ON THE FOLLOWING:

- a. SECTION 308.4 - SMOKING ON SITE
- b. SECTION 308.4 - CUTTING & WELDING
- c. SECTION 308.5 - EMERGENCY PHONE
- d. SECTION 308.11 REQUIRE ACCESS FOR FIRE FIGHTING
- e. SECTION 308.12 - STAIRWAYS REQUIRED
- f. SECTION 308.13 - APPROVED WATER SUPPLY
- g. SECTION 308.15 - STAIRWELLS
- h. SECTION 308.16 - PORTABLE FIRE EXTINGUISHERS

LEGEND - PLANS

- WINDOW TYPE  
SEE SCHEDULE A ON SHEET A11.04
  - DOOR NUMBER  
SEE SCHEDULE A ON SHEET A11.01
  - WALL TYPE  
SEE SCHEDULE A ON SHEET A0.20
  - #1 / #2 QUANTITY OF SHELVING (S) AND ROOF (R)
  - "ACCESSIBLE UNITS" PER FC009.01 AT1.1  
ALL OTHER UNITS - TYPE OF FC009.01 AT1.1  
SEE A4.00 SERIES DRAWINGS
- RATED WALL LEGEND**
- INDICATES 1 HOUR RATED WALL, UL DESIGN LISTED U90  
WALL TYPES: W1, W15
  - 1 HOUR FIRE PARTITION, UL DESIGN LISTED U90  
WALL TYPES: W1, W15
  - 1 HOUR FIRE BARRIER, UL DESIGN LISTED U90, UL 545 System A  
WALL TYPES: W1, W15, W15R
  - 1 HOUR FIRE PARTITION, UL DESIGN LISTED U90  
WALL TYPES: W1, W15, W15R
  - 2 HOUR FIRE WALL, UL DESIGN LISTED CONFO.  
WALL TYPES: W2
  - 2 HOUR FIRE BARRIER, UL DESIGN LISTED U90, UL 545 System A  
WALL TYPES: W15, W15R, W15T



KEY PLAN - PLAN AREAS

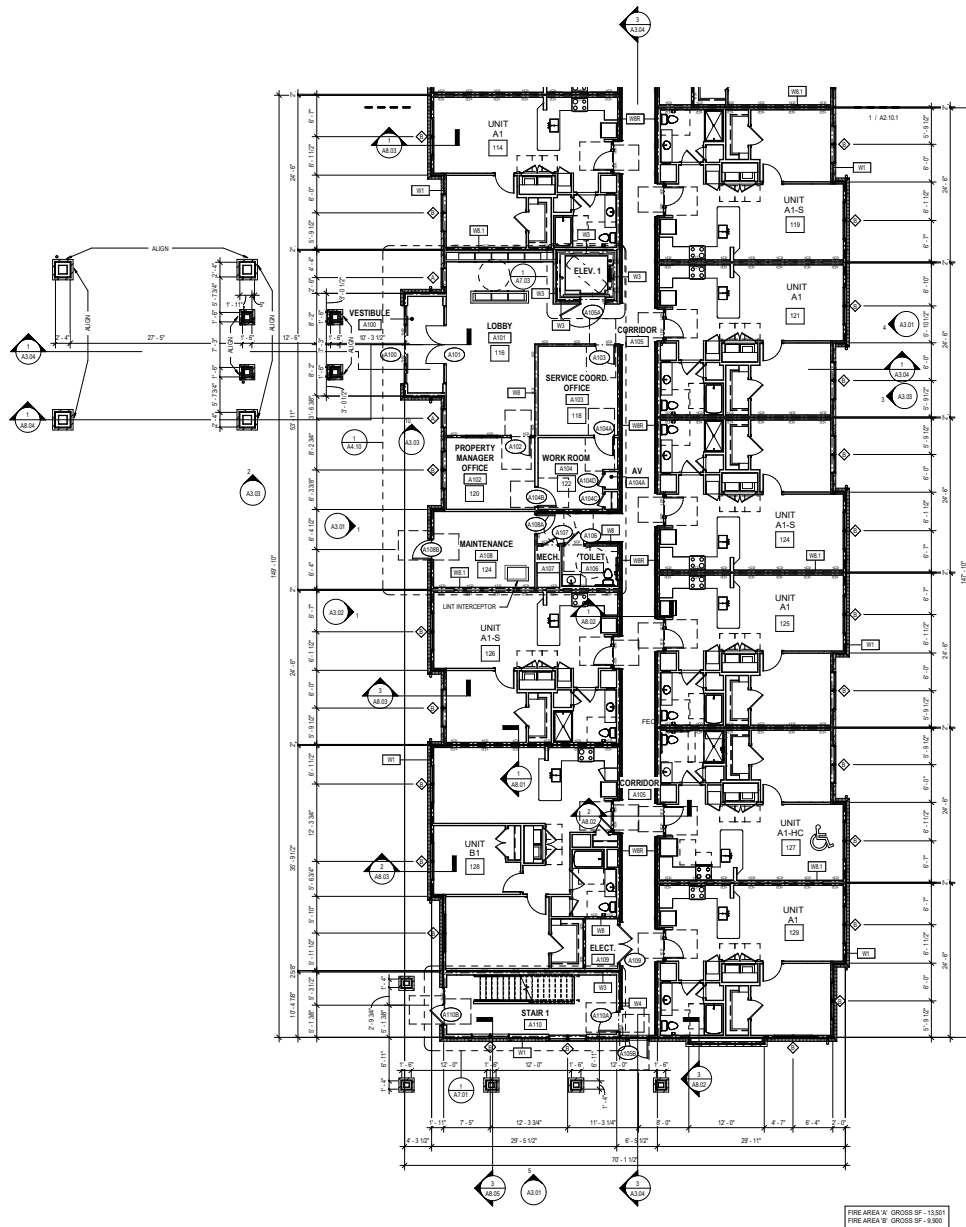


PROJECT: 1804 DATE: 07.26.2021  
 ISSUE: CONSTRUCTION DOCUMENT SET

REVISIONS:

DRAWN BY: Aulin  
 CHECKED BY: Ocker  
 CONTENT: ENLARGED PARTIAL PLAN - FIRST FLOOR

A2.10.1



FIRE AREA 'A' GROSS SF - 13,921  
FIRE AREA 'B' GROSS SF - 9,800

**GENERAL NOTES - PLAN**

THE ARCHITECTURAL DRAWING MUST BE USED IN CONJUNCTION WITH THE CIVIL, STRUCTURAL, MEP, FIRE PROTECTION DRAWINGS AND SPECIFICATIONS. THE CONTRACTOR IS RESPONSIBLE FOR ALL COORDINATION BETWEEN THE DRAWINGS. DISCREPANCIES SHOULD BE BROUGHT TO THE ATTENTION OF THE ARCHITECT.

THE CONTRACTOR IS ADVISED THAT THE AVAILABLE SPACE FOR ROUTING ALL ELECTRICAL, MECHANICAL, PLUMBING, FIRE PROTECTION AND DOMESTIC GAS PIPING, CONDUIT, TRAYS AND ELECTRONS MAY BE LIMITED IN MANY LOCATIONS. THE CONTRACTOR SHALL COORDINATE ALL OF THE TRADES WORK AND MAKE ADJUSTMENTS WITH THE ARCHITECTS APPROVAL TO THE ROUTING OF THESE TRADES AS REQUIRED. ANY REMEDIATION RESULTING FROM THE FAILURE TO COORDINATE WILL BE PERFORMED BY THE CONTRACTOR AT NO ADDITIONAL COST.

ALL PENETRATIONS OF FIRE RATED ASSEMBLIES SHALL BE FIRE BLOTTED AND SEALED PER UL APPROVED METHODS. FIRE RATED PRODUCTS AND SEALANTS FROM DIFFERENT MANUFACTURERS SHALL NOT BE COMBINED WITHIN A SINGLE RATED PENETRATION TO MEET THE UL APPROVED ASSEMBLY.

ALL DIMENSIONS ARE FOR THE FACE OF STUDY / CMU WALLS UNLESS OTHERWISE NOTED.

ALL DOORS SHALL BE INDICATED A MINIMUM OF 4'-0" PREFERRED, FROM THE INTERIOR FACE OF THE WALL, TO THE EDGE OF THE DOOR FRAME UNLESS OTHERWISE NOTED.

CONTRACTOR IS RESPONSIBLE FOR INSTALLING ALL BLOCKING AND REINFORCING AS REQUIRED FOR THE INSTALLATION OF, INCLUDING BUT NOT LIMITED TO, TOILET PARTITIONS, TOILET ACCESSORIES, HANDRAILS AND MILLWORK.

CONTRACTOR IS RESPONSIBLE FOR INSTALLING CONTROL JOINT LOCATIONS WITH SYSTEM BOARD SUBCONTRACTOR AND PROJECT TEAM TO DETERMINE REQUIRED DISTANCE BETWEEN JOINTS.

SEE CIVIL DRAWINGS FOR TOP OF SLAB ELEVATIONS.

SEE CIVIL DRAWINGS FOR UNDERGROUND PIPING FROM DOWNSPOTS TO STORMWATER.

SEE LANDSCAPE DRAWINGS FOR PLANTING & HARDSCAPE INFO.

SEE STRUCTURAL DRAWINGS FOR SHEARWALL STRAPS, BRACES, MISC. CONNECTIONS DETAILS & THE ZONING.

SEE ELEVATIONS AND WALL SECTIONS FOR MATERIAL AND HEIGHTS.

SEE ELEVATIONS FOR MATERIAL TAGS.

SEE PLANS FOR WINDOW TAGS.

SEE ELEVATIONS FOR WALL SECTION TAGS.

SEE UNIT PLANS FOR WINDOWS & INTERIOR DOOR TAGS.

SEE A4.00 SERIES FOR ENLARGED UNIT PLANS.

SEE SHEETS A7.00 SERIES FOR ENLARGED STAIR AND ELEVATOR PLANS AND SECTIONS.

SEE ROOF PLANS FOR TYP. DRAFT/STOPPING NOTES FOR WOOD FRAMED BUILDINGS.

GO TO CONFIRM FIRE LOCATIONS INDICATED BY FIRE MARSHAL AND ARCHITECT PRIOR TO INSTALLATION.

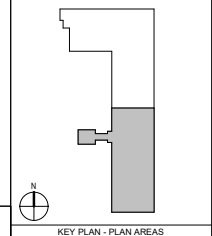
WHERE THERE IS AN ACCESSIBLE CONCEALED FLOOR, FLOORING OR AT-TIC SPACE, FIRE WALLS, FIRE BARRIERS, FIRE PARTITIONS OR ANY OTHER WALL REQUIRED TO HAVE PROTECTED OPENINGS OR PENETRATIONS SHALL BE EFFECTIVELY AND PERMANENTLY IDENTIFIED WITH SIGNS OR IDENTIFICATION IN THE CONCEALED SPACES INDICATING THE TYPE OF ASSEMBLY AND THE FIRE RATING IN-HOURS. NO WALLS THINER THAN 7" HIGH. SEE A3.00 SECTION 303.7.

FOR THE 2018 NFPA FIRE PREVENTION CODE, THE OWNER SHALL DEVELOP A DESIGNATE A PERSON TO BE THE FIRE PREVENTION PROGRAM MANAGER AND ENSURE THAT IT IS COMPLETED PRIOR TO COMPLETION OF THE PROJECT. SEE 2018 NFPA FIRE CODE SECTION 308. SEE THE FIRE CODE FOR REQUIRED MEASURES ON THE FOLLOWING:

- a. SECTION 308.4 - SMOKING ON SITE
- b. SECTION 308.4 - CUTTING & WELDING
- c. SECTION 308.5 - EMERGENCY PHONE
- d. SECTION 308.1 - REQUIRE ACCESS FOR FIRE FIGHTING
- e. SECTION 301 - STAIRWAYS REQUIRED
- f. SECTION 302.1 - APPROVED WATER SUPPLY
- g. SECTION 303.1 - STANDARDS
- h. SECTION 303.1.1 - PORTABLE FIRE EXTINGUISHERS

**LEGEND - PLANS**

	WINDOW TYPE SEE SCHEDULE ON SHEET A11.04
	DOOR NUMBER SEE SCHEDULE ON SHEET A11.01
	WALL TYPE SEE SCHEDULE ON SHEET A0.20
#1 / #2	QUANTITY OF SHELVING (S) AND ROD (R)
	"ACCESSIBLE UNITS" PER SECTION A11.7.1 ALL OTHER UNITS - TYPE OF FIXTURES A11.7.1 SEE A11.00 SERIES DRAWINGS
<b>RATED WALL LEGEND</b>	
	INDICATES 1 HOUR RATED WALL, UL DESIGN U30A, U30B, U30C, U30D, U30E
	1 HOUR FIRE PARTITION, UL DESIGN U30A, U30B, U30C, U30D, U30E
	1 HOUR RATED BARRIER, UL DESIGN U30A, U30B, U30C, U30D, U30E
	2 HOUR FIRE WALL, UL DESIGN U30B, U30C, U30D, U30E
	2 HOUR FIRE BARRIER, UL DESIGN U30A, U30B, U30C, U30D, U30E



ENLARGED PARTIAL PLAN - FIRST FLOOR  
1/8" = 1'-0"

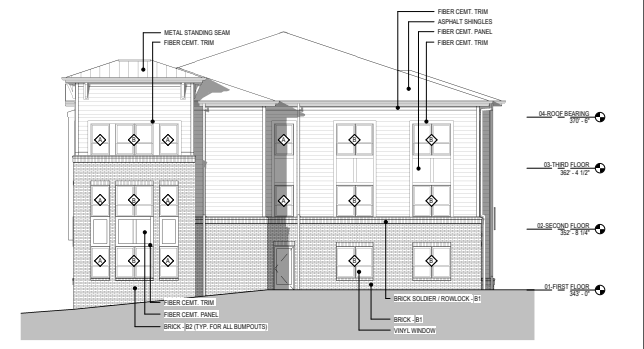


PROJECT	1804	DATE	
ISSUE	CONSTRUCTION DOCUMENT SET		07.26.2021
REVISIONS			

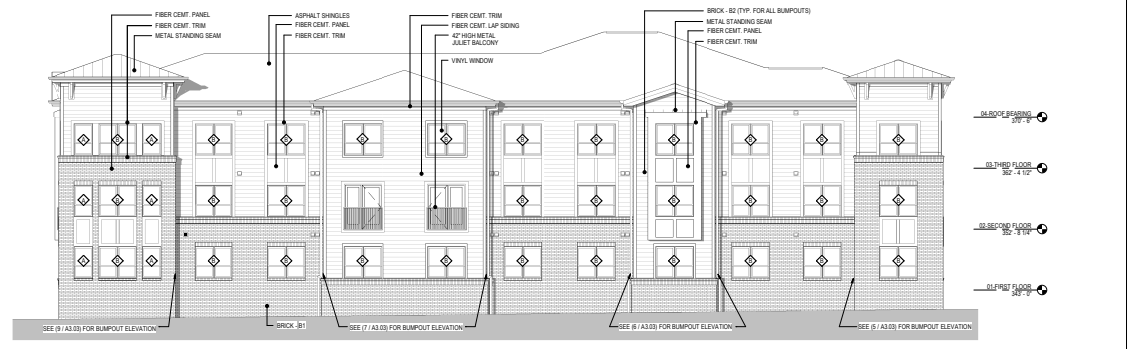
DRAWN BY	Aulin
CHECKED BY	Checker
CONTENT	ENLARGED PARTIAL PLAN - FIRST FLOOR



PROJECT	1804	DATE	
ISSUE	CONSTRUCTION DOCUMENT SET		07.26.2021
REVISIONS			
DRAWN BY	AJW	CHECKED BY	Chenar
CONTR			BUILDING ELEVATIONS



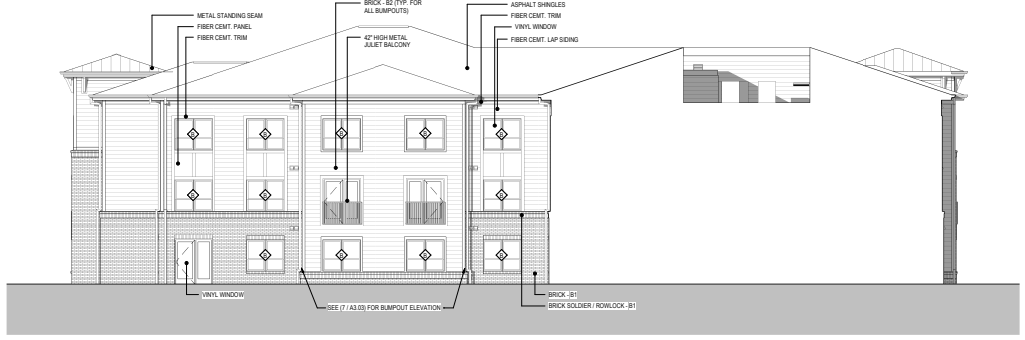
**WEST ELEVATION**  
 1/8" = 1'-0"



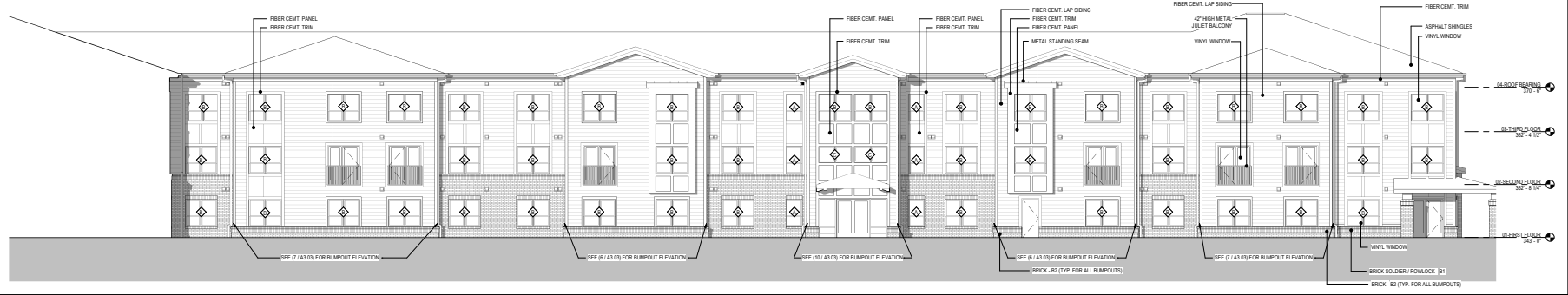
**NORTH ELEVATION**  
 1/8" = 1'-0"



**WEST ELEVATION**  
 1/8" = 1'-0"

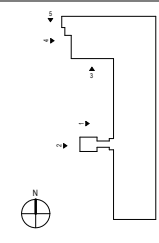


**SOUTH ELEVATION**  
 1/8" = 1'-0"

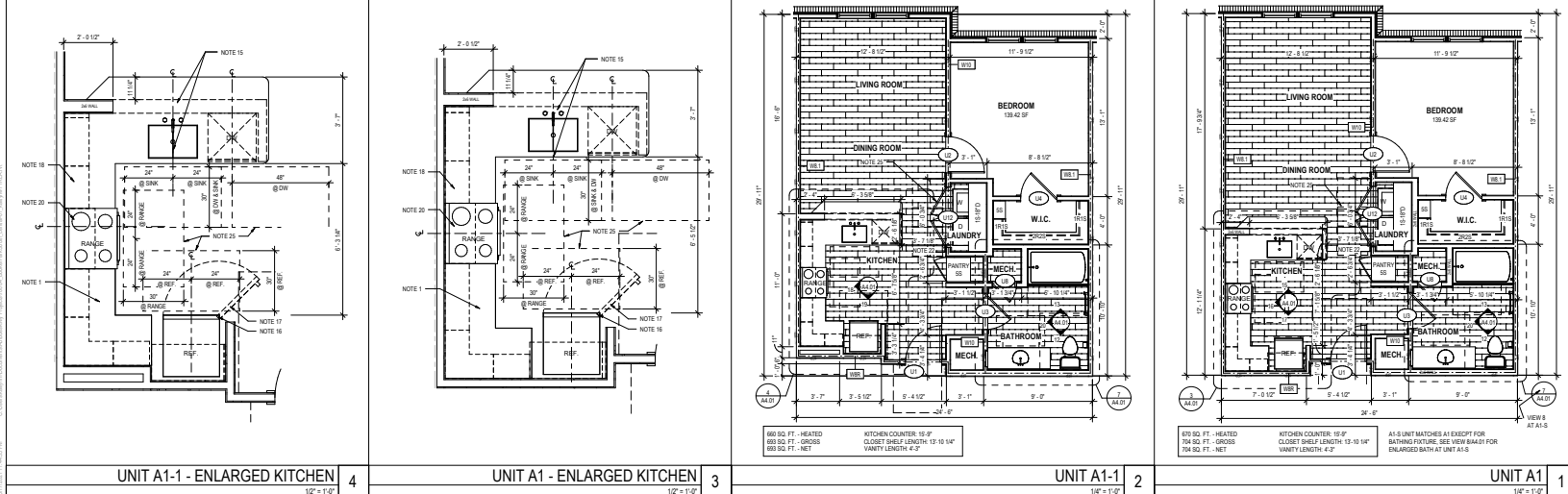
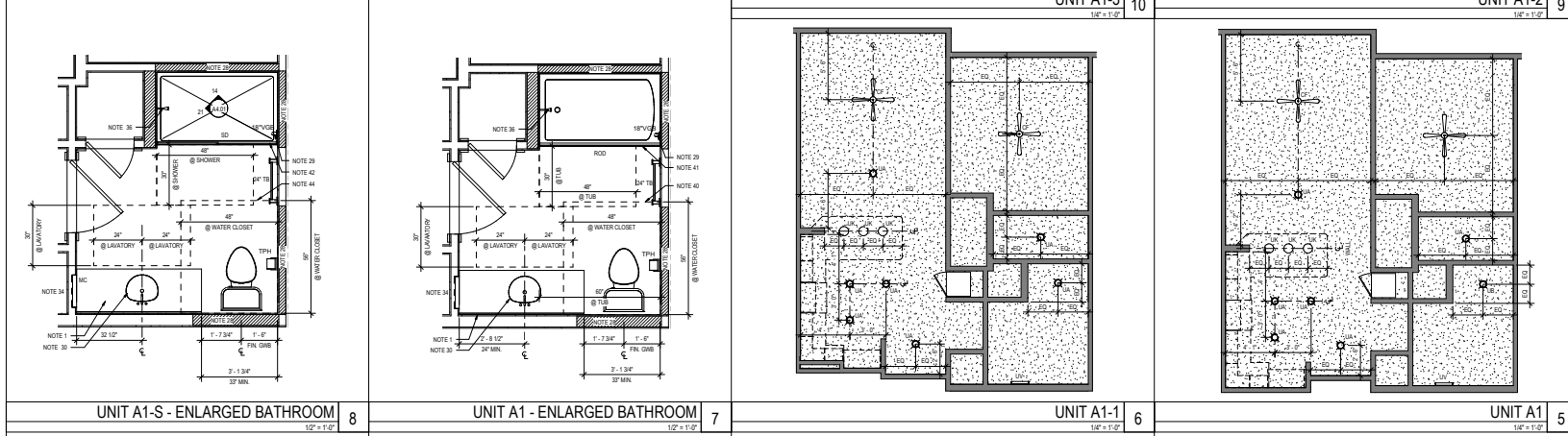
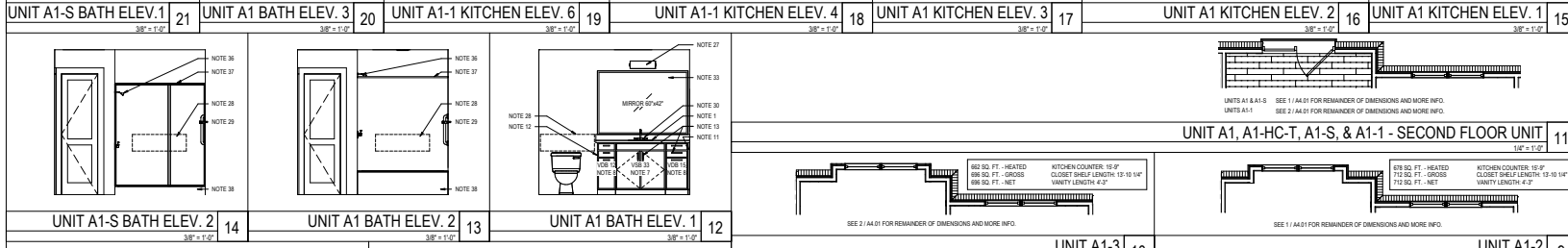
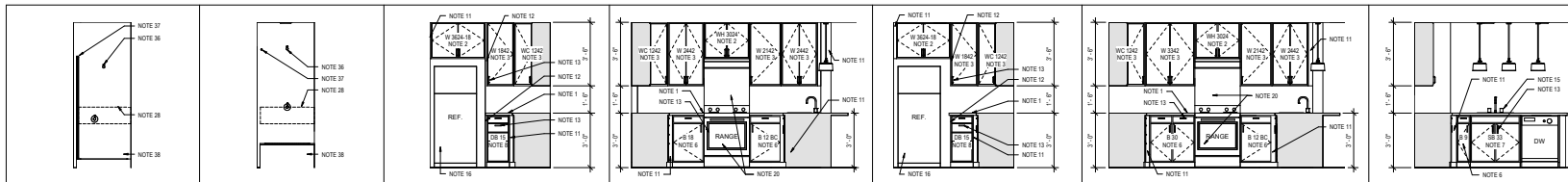


**WEST ELEVATION**  
 1/8" = 1'-0"

LEGEND - ELEVATIONS	GENERAL NOTES - ELEVATIONS
	THE ARCHITECTURAL DRAWINGS MUST BE USED IN CONJUNCTION WITH THE CIVIL, STRUCTURAL, MEP, FIRE PROTECTION DRAWINGS AND SPECIFICATIONS. THE CONTRACTOR IS RESPONSIBLE FOR ALL COORDINATION BETWEEN THE DRAWINGS. DISCREPANCIES SHOULD BE BROUGHT TO THE ATTENTION OF THE ARCHITECT.
	ROUGH AND FINISH GRADES SHALL BE SLOPED AWAY FROM BUILDING FOR POSITIVE DRAINAGE.
	PROVIDE SEALANT BETWEEN ALL DISSIMILAR MATERIALS UNLESS OTHERWISE NOTED.
	PROVIDE SEALANT BETWEEN WINDOW AND DOOR FRAMES AND ADJACENT WALL MATERIAL ON BOTH SIDES.
	PROVIDE SIKING BLOCK AND FLASHING AT ALL EXTERIOR PENETRATIONS.
	CONTRACTOR AND SUBCONTRACTOR TO FOLLOW SIKING, TRIM, BRICK INSTALLATION GUIDELINES TO ENSURE THE PRODUCTS ARE INSTALLED PER MANUFACTURER'S STANDARDS.
	THE PROJECT TEAM AND INSTALLING SUBCONTRACTOR SHALL REVIEW THE MOOD UP TO ESTABLISH THE LEVEL OF QUALITY EXPECTED FROM THE INSTALLATION. CONTRACTOR SHALL INSURE THAT ALL EXTERIOR FINISH COMPONENTS, INCLUDING ANY CUTS, JOINTS, PAINT PATTERNS, FINISHES, ETC., ARE REVIEWED FOR QUALITY CONTROL.
	PROVIDE CONTROL JOINTS (CJ) IN BRICK PER DETAIL. 1248 IS. COLOR OF SEALANT AT CONTROL JOINT SHALL MATCH MORTAR COLOR.
	ANCHOR BOTH SIDES OF CONTROL JOINT (CJ).
	COORDINATE MECHANICAL INTAKE AND EXHAUST LOCATIONS W/ARCHITECT PRIOR TO INSTALLATION. EXTERIOR DRYER VENTS MUST BE MECHANICALLY SECURED TO SIKING AND BRICK VENER.



2021 JDAVIS ARCHITECTS, INC. ALL RIGHTS RESERVED. THIS DOCUMENT IS THE PROPERTY OF JDAVIS ARCHITECTS, INC. AND IS NOT TO BE REPRODUCED OR TRANSMITTED IN ANY FORM OR BY ANY MEANS, ELECTRONIC OR MECHANICAL, WITHOUT THE WRITTEN PERMISSION OF JDAVIS ARCHITECTS, INC.



**GENERAL NOTES**

THE ARCHITECTURAL DRAWINGS MUST BE USED IN CONJUNCTION WITH THE CIVIL, STRUCTURAL, MEP, FIRE PROTECTION DRAWINGS AND SPECIFICATIONS. THE CONTRACTOR IS RESPONSIBLE FOR ALL COORDINATION BETWEEN THE DRAWINGS. DISCREPANCIES SHOULD BE BROUGHT TO THE ATTENTION OF THE ARCHITECT IMMEDIATELY. DIMENSIONS ARE FROM FACE OF CONCRETE UNLESS OTHERWISE NOTED. VERIFY ALL DIMENSIONS IN FIELD AND CONNECTIONS OF ALL CONDITIONS PRIOR TO INSTALLATION OF CABINETS. VERIFY STRUCTURAL DRAWINGS FOR BEARING WALLS, STRAPS, BRACES, AND CONNECTIONS. VERIFY ALL DIMENSIONS AND LOCATIONS OF STRUCTURAL MEMBERS PRIOR TO BEING BUILT. VERIFY ALL DIMENSIONS AND LOCATIONS OF STRUCTURAL MEMBERS PRIOR TO BEING BUILT. VERIFY ALL DIMENSIONS AND LOCATIONS OF STRUCTURAL MEMBERS PRIOR TO BEING BUILT.

**TAGGED NOTES**

WALL CABINET W/ ONE ADJUSTABLE SHELF  
WALL CABINET W/ TWO ADJUSTABLE SHELVES  
WALL CABINET WESTBORN SHELF @ MAX 48" AFF  
1 FIXED ADJUSTABLE SHELVES  
BASE CABINET W/ ONE ADJUSTABLE SHELF  
DRAWER BASE CABINET  
TYPE 'A' UNITS PROVIDE REMOVABLE CABINET DOORS & INSTALL FLOORING BELOW TO WALLS, SINK BASE, LAUNDRY AND WORK SPACE. CABINETS SHALL BE BUILT TO MATCH WITH ONLY ONE SCREWDRIVER.  
TYPE 'B' UNITS PROVIDE BEARING DRAWING KITCHEN SINK AND BATHROOM LAUNDRY. TOP OF REMOVABLE OVERHANGER HIGHER TO 36" HIGH MAX. A.F.F. PROVIDE FORWARD APPROACH @ CLR. FLR. SPACE PROVIDED PER 404.0A.  
PROVIDE FULLER EMERGENCY EGRESS.  
PROVIDE FINISHED END PANEL AT ALL EXPOSED CABINET ENDS.  
PROVIDE 1/2" OR 3/4" SQUARE HANDLES ON CABINET DOORS AND DRAWERS.  
TYPE 'A' BATH-KITCHENS 36" AFF MAX TO TOP OF SINK. RELOCATE TOP OF OVERHANGER HIGHER. PROVIDE 3/4" FORWARD APPROACH ON SINK.  
TYPE 'B' KITCHEN 36" AFF MAX TO TOP OF SINK. RELOCATE TOP OF OVERHANGER HIGHER. PROVIDE 3/4" FORWARD APPROACH ON SINK.  
ALL REFRIGERATORS SHALL HAVE OPTION TO REVERSE THE DIRECTION OF THE UPPER LOWER DOOR.  
PROVIDE 1/2" FINISH UPPER LOWER DOOR TO ACCESS TO BOTTOM WALL CUPBOARD.  
EXHAUST VENTS AND LIGHTING ABOVE RANGES MUST BE WIRED TO REMOTE SWITCHES FOR USE BY USER. LIGHT AND FAN NEAR THE RANGE IN AN ACCESSIBLE LOCATION.  
TYPE 'A' UNIT KITCHENS RANGE CONTROLS @ FRONT SHALL NOT REQUIRE REACHING ACROSS BURNERS.  
MID-LEVEL REFRIGERATOR SHALL BE INSTALLED ON ALL KITCHEN RANGES AND BE SECURELY FASTENED TO THE FLOOR.  
MID-LEVEL REFRIGERATOR SHALL BE INSTALLED ON ALL KITCHEN RANGES WITH A SPRAY PANEL. THE PANEL SHOULD SPAN FROM THE RANGE TO THE FLOOR AND BE ELASTIC. CABINETS OR ALUMINUM RANGES MUST BE INSTALLED TO FIT FLUSH TO THE WALL.  
MIN. 50% FREEZER SHELVES MAX. 56" A.F.F. IN TYPE 'A' UNITS PER AB11-1 - 2008 SECTION 105.13.6  
PROVIDE 4" CLEAR FROM ALL EXPOSED COUNTERTOPS, APPLIANCES, OR WALLS TO KITCHEN WORK AREA.  
PROVIDE 4" CLEAR FROM ALL EXPOSED COUNTERTOPS, APPLIANCES, OR CABINETS ON 3 CONTIGUOUS SIDES BETWEEN ALL EXPOSED COUNTERTOPS, APPLIANCES, OR WALLS.  
TYPE 'A' UNITS PROVIDE 3/4" CLEAR TURNING SPACE ALL ROOMS SERVED BY AN ACCESSIBLE ROUTE.  
SERVED BY AN ACCESSIBLE ROUTE. PARALLEL APPROACH CENTERED ON ALL APPLIANCES. CLR. CANTER OFFSET FROM CLR. FLR. SPACE BY 1/2" TO 1" TO PROVIDE CLEARANCE OVER TO HAVE CLR. FLR. SPACE ADJACENT TO OPEN DOOR.  
WALL SCHEDULE - SEE ELEC. DWGS.  
PROVIDE SOLUTIONS FOR GRABBAR INSTALLATION IN TYPE 'A' AND FUTURE INSTALLATION IN TYPE 'B'. SEE SHEET A4.04B.  
PROVIDE A GRABBAR 1/2" HIGH OVER ALL REFRIGERATORS. THE GRAB BAR MUST BE INSTALLED CENTERED VERTICALLY AT 48" HIGH A.F.F. ON THE WALL OPPOSITE THE CONTROLS.  
TYPE 'B' BATHROOMS 36" AFF MAX TO TOP OF SINK.  
MID-LEVEL REFRIGERATOR SHALL BE INSTALLED. PROVIDE 3/4" FORWARD APPROACH TO OPEN DOOR.  
TYPE 'A' UNIT OFF SET KITCHEN RANGE CONTROLS 1" FROM TOP OF BATHING FUTURE.  
TYPE 'A' UNIT PROVIDE REFLECTING SLEEVES @ WATER SUPPLY & DRAIN PIPES.  
FRAMED MIRROR, 40" MIN. A.F.F. TO BOTTOM EDGE OF REFLECTING SURFACE OF MIRROR IN TYPE 'A' UNITS.  
PROVIDE RECESSIVE MIRROR IN ALL BATHROOMS.  
PROVIDE ADJUSTABLE SHOWER HEAD ON SLIDING GUIDE W/ 90° FLEX HEAD.  
SHOWER HEAD MOUNTED @ 7'-0" AFF.  
SHOWER ROD AT TUB AND GLASS SHOWER DOORS AT SHOWER. FINGERLESS MOUNTED @ 7'-0" AFF.  
TYPE 'A' UNITS FLUSH CONTROLS @ 8" OPEN SIDE.  
WHERE DOOR SWINGS INTO CLEARANCE, PROVIDE 3/4" HIGHER CLEARANCE @ CLR. FLR. @ 48" AFF. TYPE 'B' UNITS ONE SIDE OF CLR. FLR. SPACE TO BE PARALLEL APPROACH @ CLR. FLR. SPACE THE WIDTH OF BATH TUB @ 3" DEEP. INCREASE TO 4" DEEP AT FORWARD APPROACH.  
SHOWER TO BE PARALLEL APPROACH @ CLR. FLR. SPACE OF 48" AFF. TYPE 'A' UNITS 48" AFF. TYPE 'B' UNITS 56" AFF. INCREASE TO 60" DEEP WHERE CLEARANCE OVERLAP WITH WAINSCOT.  
TYPE 'B' WATER CLOSETS PROVIDE CLR. FLR. SPACE OF 48" WIDE, 48" DEEP. INCREASE TO 60" DEEP AT FORWARD APPROACH.  
GRAB BARS SEE SHEET A4.04B FOR SIZE AND LOCATION.

**SYMBOL LEGEND**

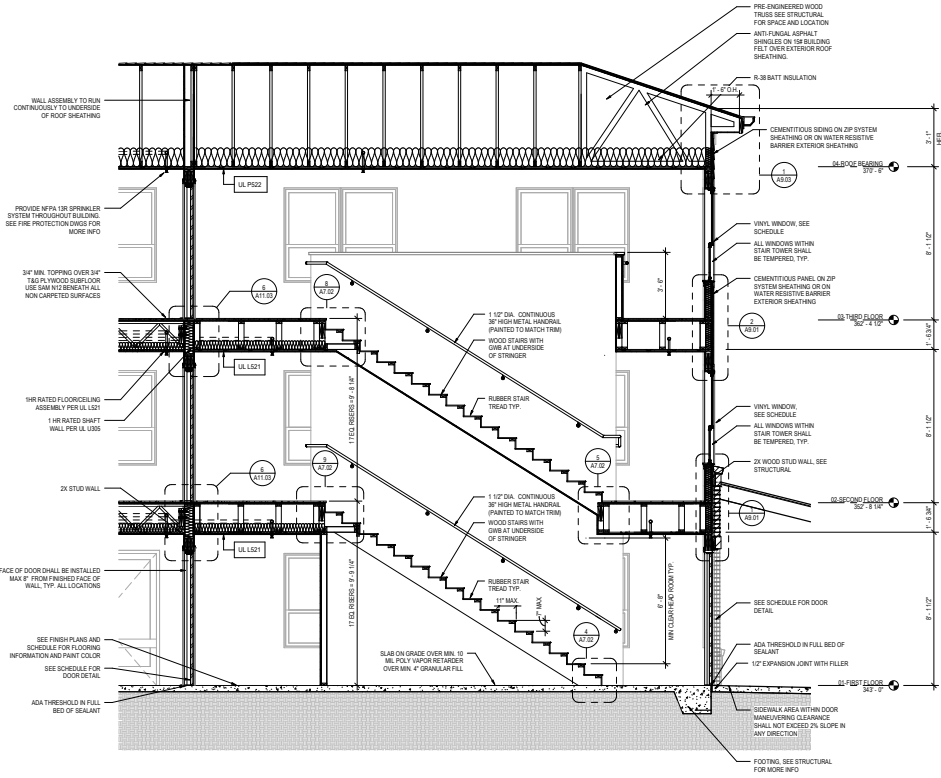
□ DENOTES DOOR TYPE (SEE A11 SERIES FOR DOOR SCHEDULES)

HRWS QUANTITY OF ROOFS/SHELVES

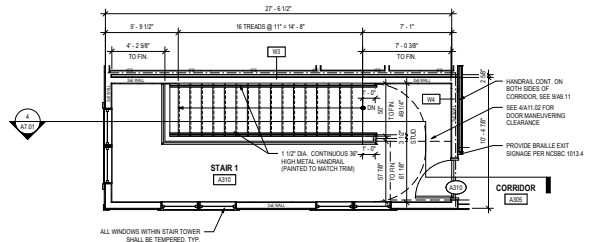
**LEGEND-FIRE RATINGS**

1. SEE SHEETS A0.10 AND A0.16 FOR UL DETAILS.  
2. SEE A2.00 AND A4.00 SERIES FOR LOCATIONS.

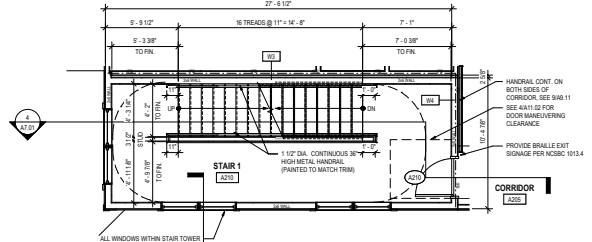




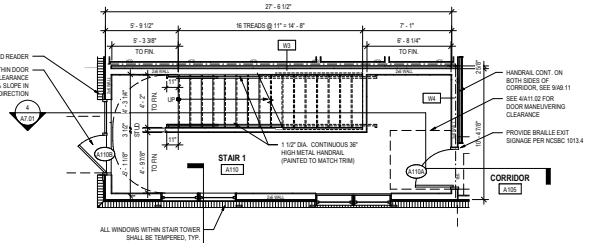
**STAIR 1 - SECTION** 4  
 3/8" = 1'-0"



**STAIR 1 - THIRD FLOOR** 3  
 1/8" = 1'-0"



**STAIR 1 - SECOND FLOOR** 2  
 1/8" = 1'-0"



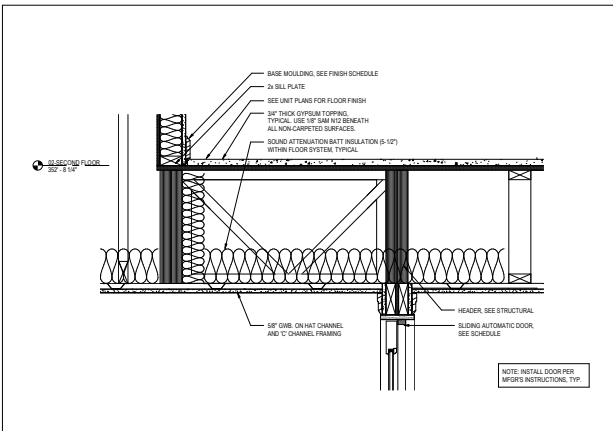
**STAIR 1 - FIRST FLOOR** 1  
 1/8" = 1'-0"

**DHC**  
**BOOKER PARK SOUTH**  
 Raleigh, North Carolina

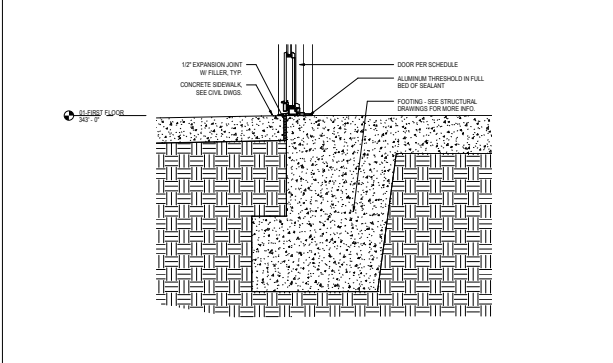


PROJECT	1804	DATE	
ISSUE	CONSTRUCTION DOCUMENT SET	DATE	07.26.2021
REVISIONS			
DRAWN BY	Ajuria	CHECKED BY	Ochser
CONTENT	STAIR PLANS AND SECTIONS		

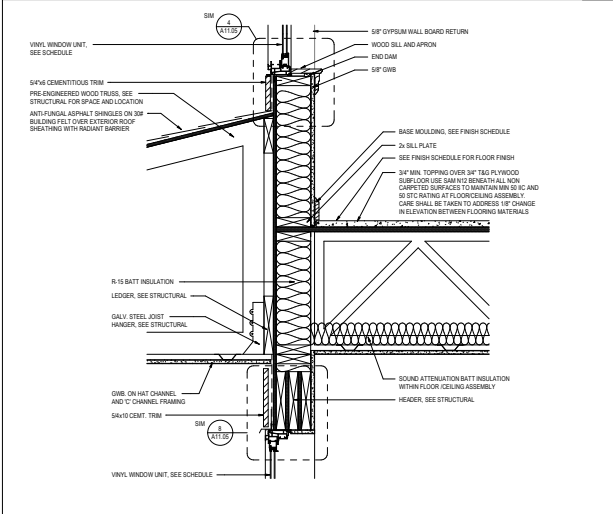
**A7.01**



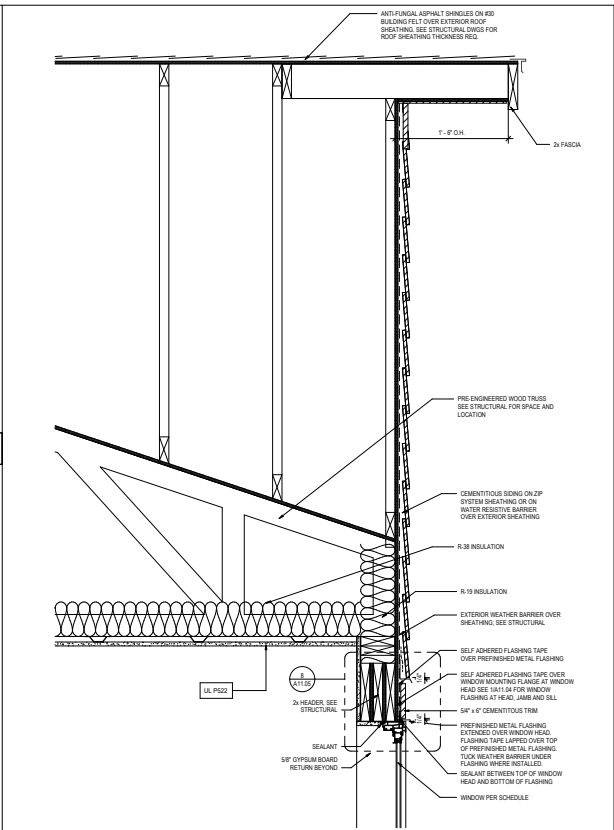
ENLARGED VERTICAL DETAIL - SLIDING ENTRY DOOR HEAD  
1 1/2" = 1'-0"



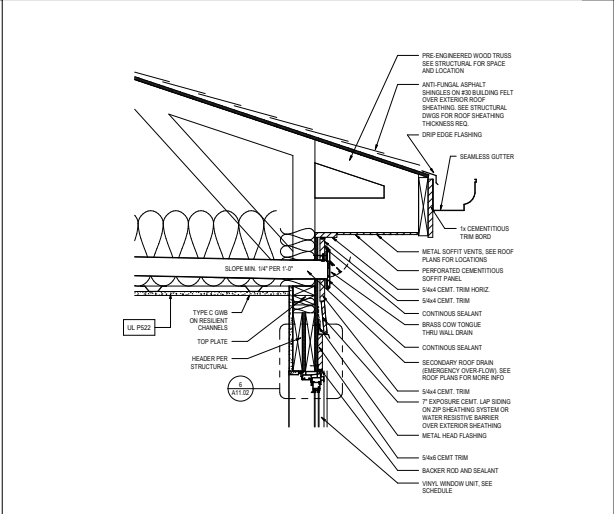
ENLARGED VERTICAL DETAIL - SLIDING ENTRY DOOR THRESHOLD  
1 1/2" = 1'-0"



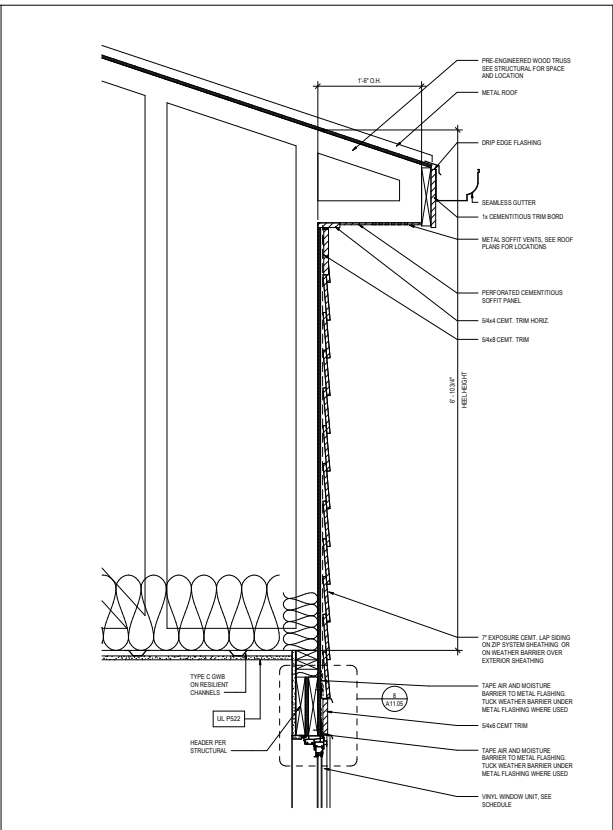
ENLARGED VERTICAL DETAIL - PORCH ROOF DETAIL  
1 1/2" = 1'-0"



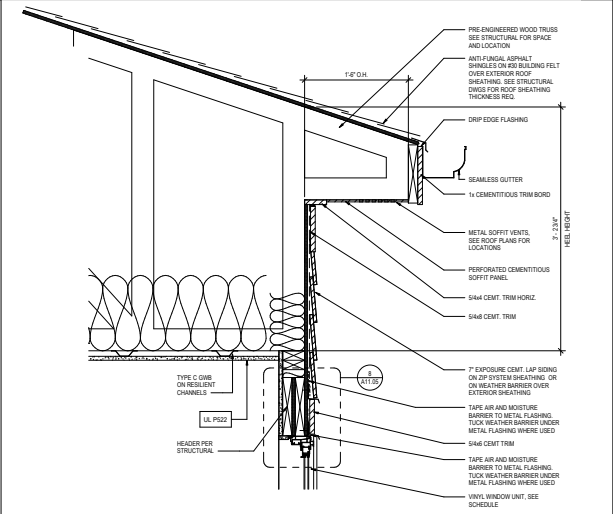
ENLARGED VERTICAL DETAIL - GABLE  
1 1/2" = 1'-0"



ENLARGED VERTICAL DETAIL @ OVERFLOW ROOF DRAIN  
1 1/2" = 1'-0"



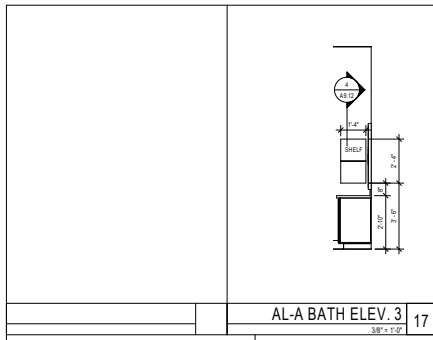
ENLARGED VERTICAL DETAIL - HIGH ROOF  
1 1/2" = 1'-0"



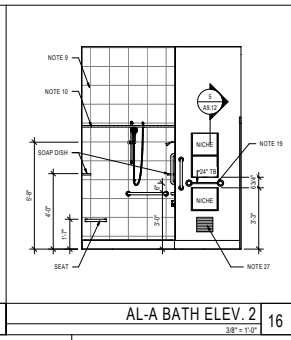
ENLARGED VERTICAL DETAIL - ROOF OVERHANG  
1 1/2" = 1'-0"

PROJECT	1804	DATE	
ISSUE	CONSTRUCTION DOCUMENT SET		07.26.2021
REVISIONS			
DRAWN BY	AJW	CHECKED BY	Chow
CONTENT			ENLARGED DETAILS

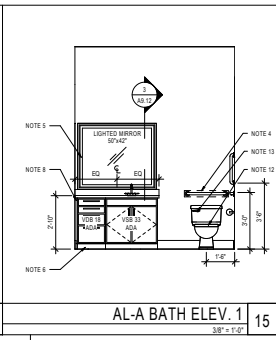




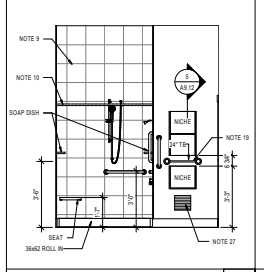
AL-A BATH ELEV. 3  
3/8" = 1'-0"



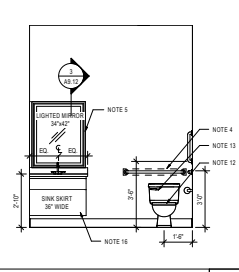
AL-A BATH ELEV. 2  
3/8" = 1'-0"



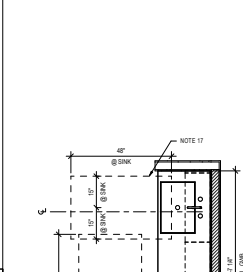
AL-A BATH ELEV. 1  
3/8" = 1'-0"



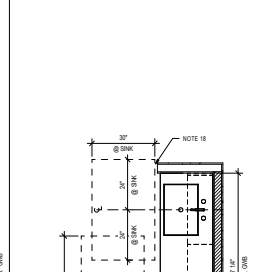
AL-A-HC BATH ELEV. 2  
3/8" = 1'-0"



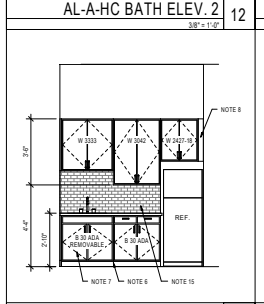
AL-A-HC BATH ELEV. 1  
3/8" = 1'-0"



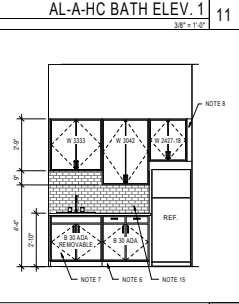
UNIT AL-A-HC - ENL. KITCHEN  
1/2" = 1'-0"



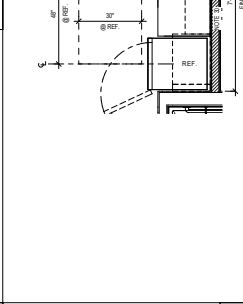
UNIT AL-A - ENL. KITCHEN  
1/2" = 1'-0"



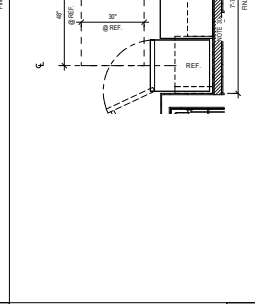
AL-A-HC KITCHEN ELEV.  
3/8" = 1'-0"



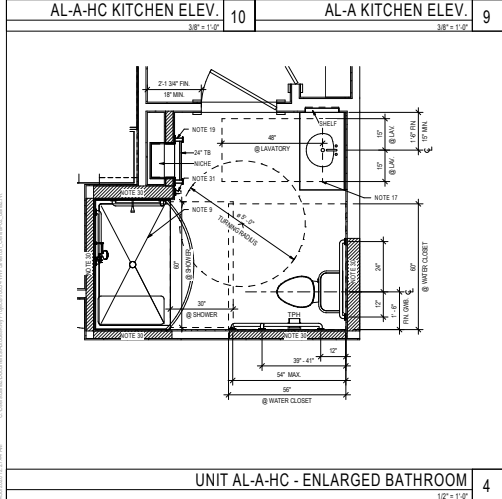
AL-A KITCHEN ELEV.  
3/8" = 1'-0"



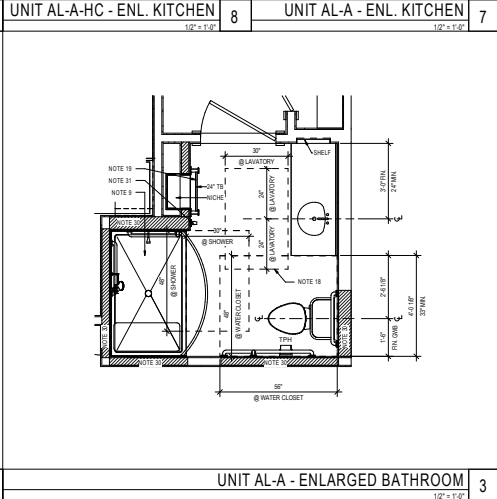
UNIT AL-A-HC - ENL. BATHROOM  
1/2" = 1'-0"



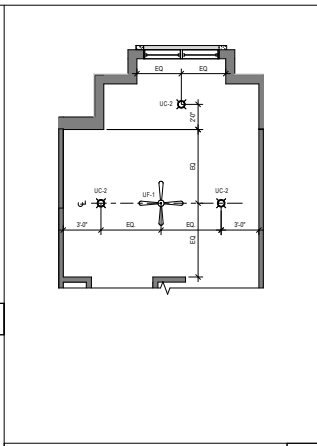
UNIT AL-A - ENL. BATHROOM  
1/2" = 1'-0"



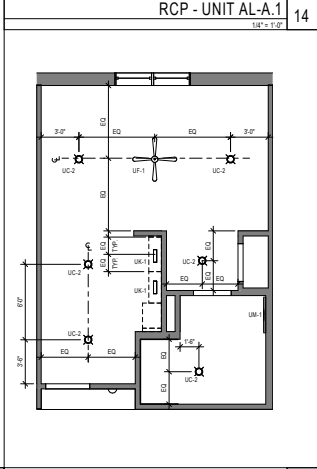
UNIT AL-A-HC - ENLARGED BATHROOM  
1/2" = 1'-0"



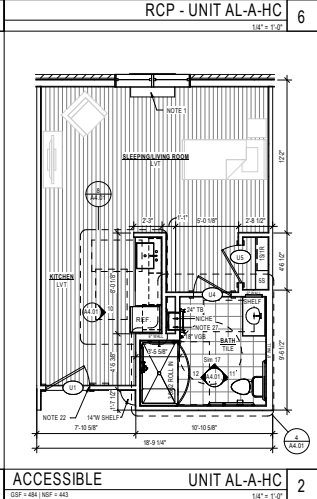
UNIT AL-A - ENLARGED BATHROOM  
1/2" = 1'-0"



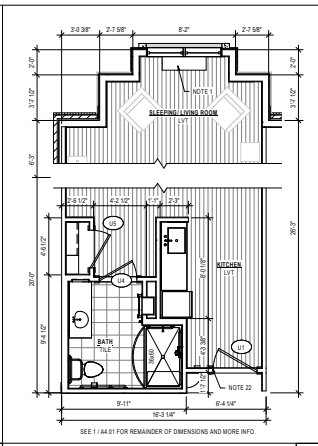
RCP - UNIT AL-A  
1/2" = 1'-0"



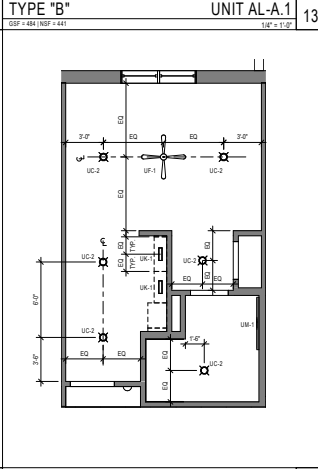
RCP - UNIT AL-A-HC  
1/2" = 1'-0"



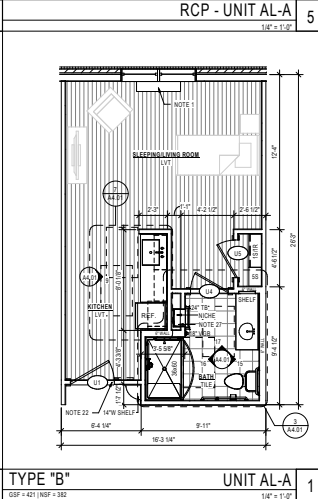
ACCESSIBLE UNIT AL-A-HC  
1/2" = 1'-0"



TYPE "B" UNIT AL-A  
1/2" = 1'-0"



RCP - UNIT AL-A  
1/2" = 1'-0"



TYPE "B" UNIT AL-A  
1/2" = 1'-0"

**GENERAL NOTES - UNITS**

SEE SHEET **AL-A** AND **AL-A-EE** FOR DWELLING UNIT ACCESSIBILITY NOTES.

DIMENSIONS IN PLANS ARE FACE OF STUD TO FACE OF STUD, UNLESS NOTED OTHERWISE.

VERIFY DIMENSIONS AND CONNECTIONS OF ALL APPLIANCES WITH MANUFACTURER BEFORE CABINET INSTALLATION.

SEE STRUCTURAL DRAWINGS FOR DIMENSIONAL STRAPS, BRACES, MISC CONNECTION DETAILS, AND TIE DOINGS.

SEE PLUMBING & ELECTRICAL DRAWINGS FOR WATER AND MECHANICAL UNITS. SEE AND CONFIRMATIONS.

SEE BUILDING PLANS AND ELEVATIONS FOR MASONRY / STONE VENEER LOCATIONS.

SEE DOOR AND WINDOW SCHEDULE FOR DOOR AND WINDOW SIZES AND MATERIALS.

ALL SHOWER WALLS SHALL BE GYPSUM BOARD PRE-ROCKED AND MEET UL RATINGS.

ICE MAKER AND WASHER PLUMBING BOES SHALL BE GYPSUM BOARD PRE-ROCKED TO MEET UL RATING OR FIRE RATED.

PROVIDE 2X6 STUD OR 4" METAL STUD WALLS BEHIND ALL TOILET, SHOWER AND SINKS.

PROVIDE REQUIRED BLOCCING FOR ALL CABINETS, TOILET ACCESSORIES, COUNTERS, ETC. IN WALL PRIOR TO INSTALLATION OF GYPSUM BOARD.

ALL UNIT INTERIOR WALLS HAVE 2X4 STUD OR 3.5X8" METAL STUD UNLESS OTHER NOTES. SEE CS SERIES PLANS FOR WALL TYPE. FACE AT UNIT SEPARATION, AND UNIT/DOOR SEPARATION.

ALL DOORS SHALL BE MOUNTED MIN. 4" FROM THE INTERIOR FACE OF WALL TO EDGE OF DOOR FRAME UNLESS OTHERWISE NOTED.

\*FINISH ELECTIONS: REFER TO 60-00 INTERIOR SCHEDULES FOR ALL FINISH SCHEDULE INFORMATION.

WINDOWS - SEE PARTIAL BUILDING PLANS IN A2.00 SERIES FOR WINDOW TYPE AND DIMENSIONS.

**LEGEND - PLANS**

1. DOOR NUMBER - SEE SCHEDULE ON SHEET A11.01

2. #R / #S - QUANTITY OF SHELVES (S) AND ROD (R)

3. SEE TAGGED NOTES BELOW

**TAGGED NOTES**

- THRU WALL PTAC UNITS WITH COVER UNDER WINDOWS. SEE MECHANICAL. SEE SHEET A11.01
- ACCESS PANEL WITH PERMITTER RETURN AIR FOR VPTAC UNITS. SEE MECHANICAL. SEE SHEET A11.01
- RETURN AIR GRILLE FOR VPTAC UNITS. SEE MECHANICAL.
- DASHLINE INDICATES BLOCKING AT ALL GRAB BARS, TYPICAL.
- MIRROR WITH BOTTOM OF REFLECTIVE SURFACE AT 42" MAX AFF.
- 4" TOE KICK AT BASE OF CABINET.
- REMOVABLE FRONT PANEL PROVIDE PROTECTIVE PIPE SLEEVE AT DRAIN PIPE. FLOOR FINISH TO EXTEND UNDER THE REMOVABLE CABINET.
- NOTE AT A TYPE B UNITS, REMOVABLE PANEL IS NOT REQUIRED FOR PARALLEL APPROACH, BUT SHALL BE PROVIDED FOR FUTURE FLEXIBILITY.
- PROVIDER FILLER STRIPS AT REQUIRED.
- ALL SHOWERS TO BE TIED TO THE CEILING. SEE SHEET AL-A-EE FOR SHOWER SEAT, GRAB BAR, AND CONTROL REQUIREMENTS. SEE SHEET AL-A-EE FOR SHOWER DETAILS.
- CURVED SHOWER RODS AT AL AND HC UNITS. CENTER ROD AT 6" AFF.
- TOILET FIXTURE WITH SEAT HEIGHT BETWEEN 17" AND 19".
- TOILET FLUSH CONTROL ON THE OPEN SIDE.
- DOOR PER SCHEDULE.
- BACKSPASH AND COUNTER, SEE INTERIOR DRAWINGS IN A2.00 SERIES.
- IF SINK SIBBY: REFER TO FLOORING LIAISON OFFICE ON SHEET AL-A-EE. FIGURE BATHROOM FLOORING EXTENDS UNDER.
- FOR FORWARD APPROACH AT BATHROOM AND KITCHEN SINKS, CENTER SINK ON REQUIRED 30" CLEAR AREA AND 18" MIN FROM ADJACENT WALL.
- FOR CABINETS LABELED AS REMOVABLE: SEE NOTE #1 ABOVE FOR CABINETS LABELED AS SINK SIBBY. SEE NOTE #15 ABOVE.
- FOR PARALLEL APPROACH AT BATHROOM AND KITCHEN SINKS, CENTER SINK ON REQUIRED 48" CLEAR AREA AND 20" MIN FROM ADJACENT WALL.
- SET TOP OF TOWEL BAR AT 42" AFF MAX AFF AT ALL UNITS. PROVIDE END BLOCKING AT ALL THREE BARS.
- SUB DRAIN, SEE PLUMBING AND MECHANICAL DRAWINGS.
- PROVIDE WASHER ON LEFT SIDE AND DRYER ON RIGHT SIDE OF CLOSET. COORDINATE APPLIANCE LOCATION ACCORDINGLY WHERE PLAN IS WARRIRED. TYPED IN THE BUILDING.
- AT AL AND HC UNITS ONLY, ENTRY DOORS DO NOT HAVE CLEARANCE REQUIREMENT AT DOOR. PROVIDE SINK AS NOTED IN PLAN.
- PLUMBING FIXTURES ARE NOT REQUIRED AT POWER ROOMS.
- CLOSET DOOR PROVIDES 32" CLEAR OPENING, THEREFORE DOES NOT NEED TO MEET 34" MAX CLEARANCE REQUIREMENT.
- SEE PARTIAL BUILDING PLANS ON CS-00 SHEET SERIES FOR EXTERIOR BALCONY DOOR TAGS AND WINDOW TAGS.
- ELECTRICAL PANEL: SEE ELECTRICAL DRAWINGS. TOP OF PLAN MUST BE AT 4" MAXIMUM ABOVE FINISHED FLOOR. PANEL MUST HAVE 30X48 FORWARD OR PARALLEL APPROACH.
- FRONT OF ELECTRICAL PANEL SHALL BE THE SAME SIDE AS WHERE 30X48 CLEARANCE BOX IS SHOWN.
- ELECTRICAL HEATER IN RECESSED NICHE FOR UNITS WITH WINDOW PTAC UNITS. SEE MEP DRAWINGS.
- FULL HEIGHT 1" FILLER PANEL BETWEEN EDGE OF COUNTER AND REFRIGERATOR. SEE DETAIL ON SHEET AL-A-EE.
- UPPER INSIDE CORNER CABINET WITH BOTH DOORS HINGED TOGETHER.
- NATCH INDICATES 2X6 BLOCKING IN WALL FOR KITCHEN CABINETS, AND BATHROOM GRAB BARS AT WATER CLOSET AND SHOWER. BLOCKING TO BE 30" AFF FOR WATER CLOSET AND 30" AFF FOR SHOWERS.
- IF VERTICAL GRAB BAR TAGS AT WATER CLOSET AND 30" AFF FOR SHOWERS.

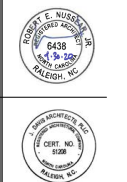
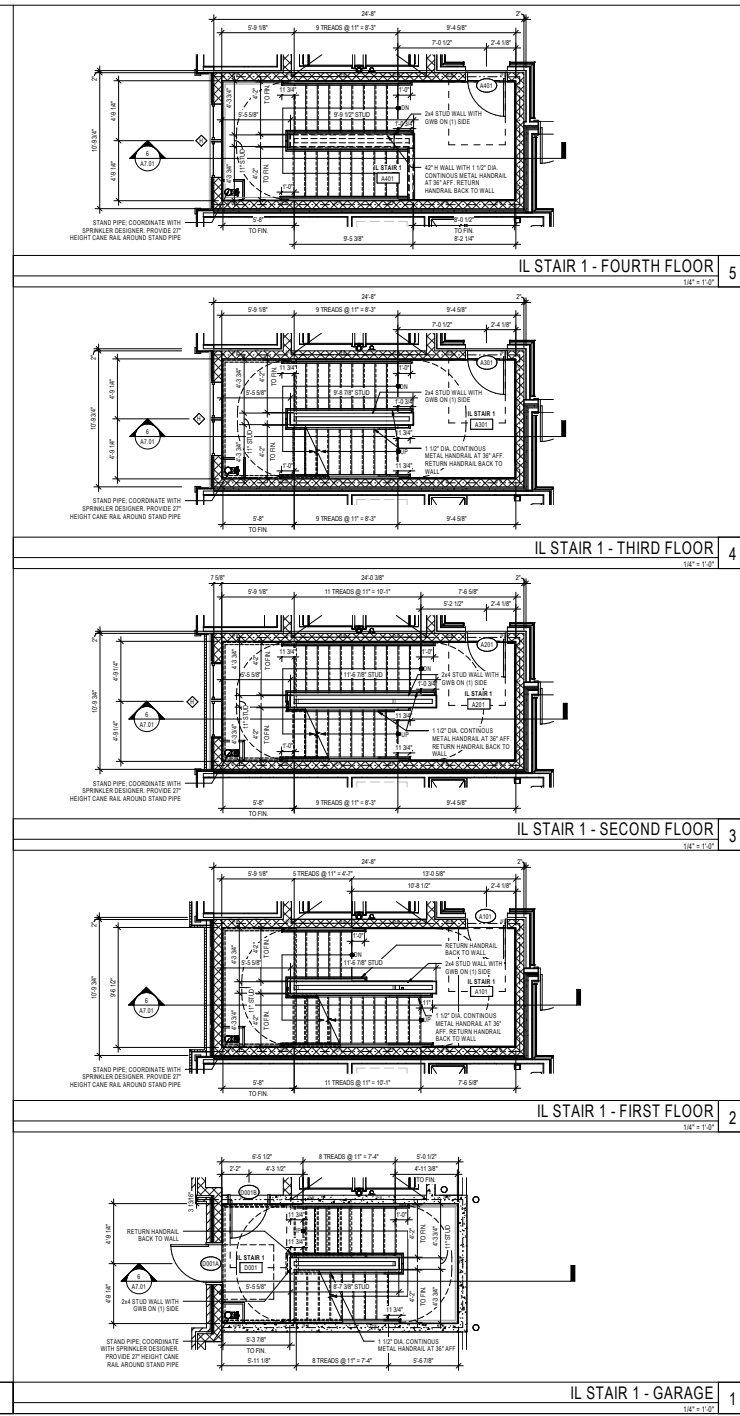
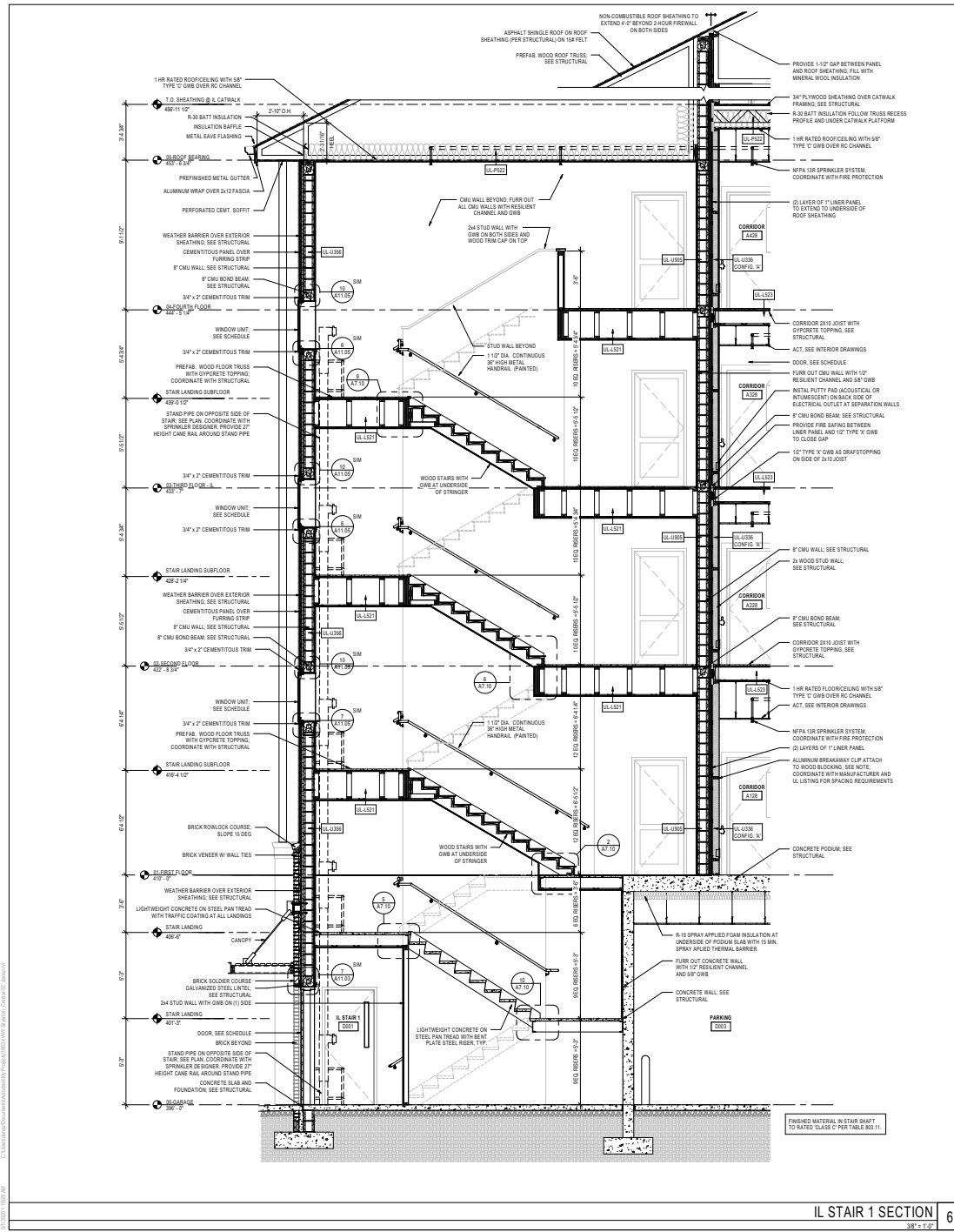
**JDAVIS**  
505 South Wilmington Street, Raleigh, NC 27601 (919) 851-1500  
1500 Walnut St., Suite 1100 | Philadelphia, PA 19102 (610) 755-5401

Singh Development, LLC  
**Waltonwood - Silverton**  
Cary, NC

PROJECT: 1804 DATE: \_\_\_\_\_  
ISSUE: PERMIT SET DATE: 04.30.2020  
REVISIONS: \_\_\_\_\_

DRAWN BY: Ajuin  
CHECKED BY: Ocheer  
CONTENT: UNIT PLANS & ELEVATIONS

**A4.01**



PROJECT	1804	DATE	
ISSUE	PERMIT SET		04.02.2020
REVISIONS			
DRAWN BY	AJ/ur	CHECKED BY	Checker
CONTENT	STAIR PLANS AND SECTIONS		









DIGITAL RENDERING - SHORE POINT ARCHITECTURE



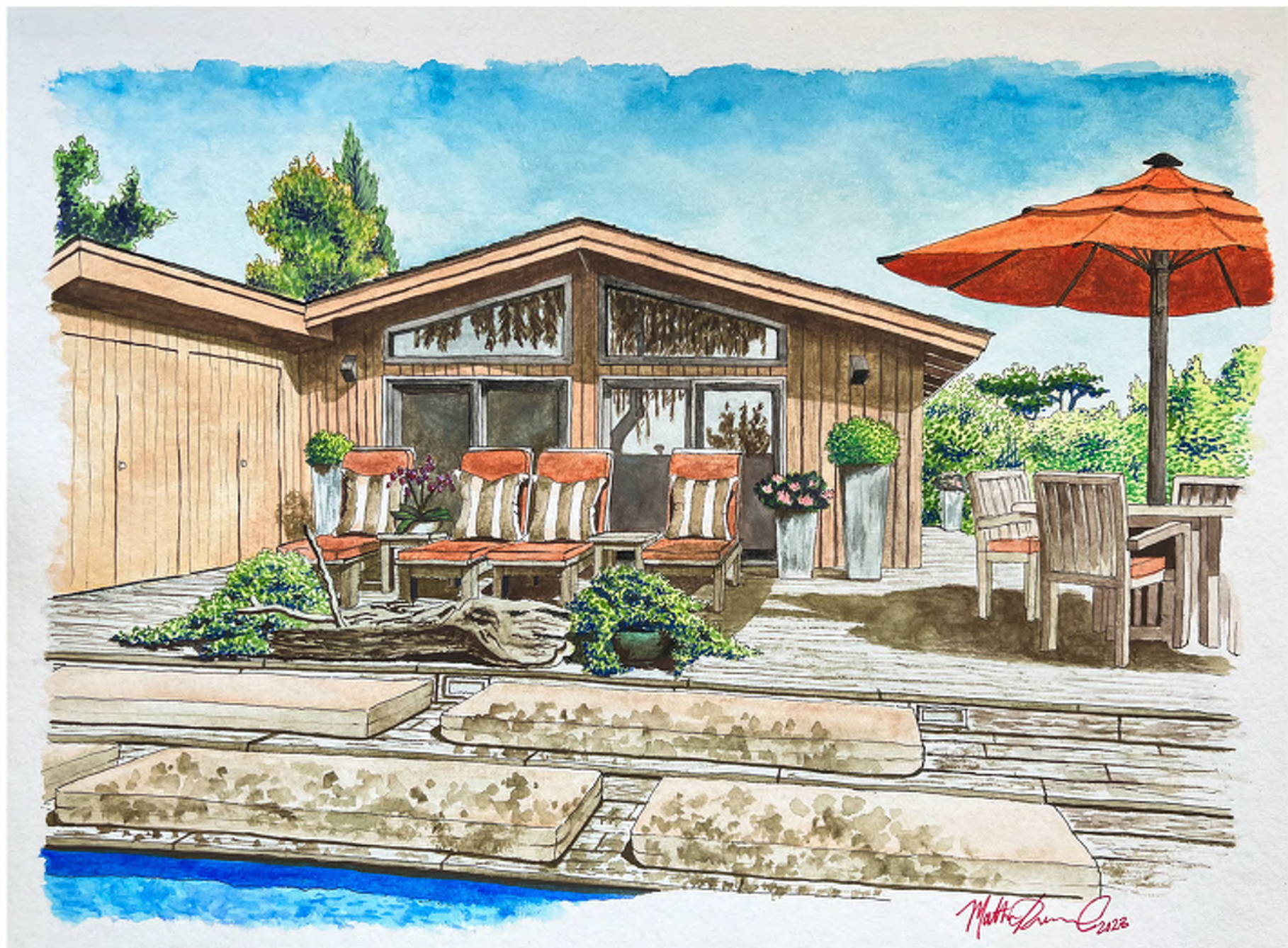
DIGITAL RENDERING - SHORE POINT ARCHITECTURE



DIGITAL RENDERING - SHORE POINT ARCHITECTURE



DIGITAL RENDERING - PHILADELPHIA UNIVERSITY





MUSEUM OF THEOLOGY  
SCHEMATIC DESIGN SKETCH

